

# LEADING ECONOMIC INDICATORS



INFLATION RATE



JANUARY 2025

Table 1(a): Consumer Price Indices .....	6
Table 1(b): Inflation Rates .....	7
Table 2: Mean Monthly Foreign Exchange Rates of Kenyan Shilling against Selected Major Currencies .....	7
Table 3: Interest rate (%) .....	9
Table 4: Nairobi Securities Exchange 20 Share Index .....	10
Table 5(a): Money Supply .....	10
Table 5(b): Gross Foreign Exchange Reserves .....	12
Table 6: Coffee Sales and Prices .....	13
Table 7: Tea Production, Auction Volume and Prices.....	14
Table 8: Cane Deliveries .....	15
Table 9(a): Average Monthly Retail Prices for Dry Maize, 2024 (per Kg) .....	16
Table 9(b): Average Monthly Retail Prices for Dry Maize, 2025 (per Kg) .....	17
Table 9(c): Average Monthly Retail Prices for Dry Beans, 2024 (per Kg).....	18
Table 9(d): Average Monthly Retail Prices for Dry Beans, 2025 (per Kg) .....	19
Table 10: Exports of Coffee and Tea .....	20
Table 11: Monthly Exports of Fresh Horticultural Produce .....	20
Table 12: External Trade .....	20
Table 13(a): Major Destinations of Domestic Exports .....	21
Table 13(b): Domestic Exports by Broad Economic Category .....	21
Table 14(a): Major Origins of Imports .....	22
Table 14(b): Imports by Broad Economic Category .....	23
Table 14 (c): Mobile Money Transactions .....	23
Table 14(d): International trade in ICT .....	23
Table 15(a): Local Electricity Generation by Source .....	25
Table 15(b): Generation and Consumption of Electricity .....	26
Table 15(c): Consumption of Petroleum Fuels .....	27
Table 15(d): Average Retail Prices for Selected Fuel Products within Nairobi .....	28
Table 15(e): Average Retail Prices for Selected Fuels in Kenya (National Average Retail Prices) .....	29
Table 15(f): OPEC Reference basket Prices.....	30
Table 16: Value of Building Plans Approved for Nairobi City County .....	30
Table 17(a): Domestic Production of Sugar .....	30
Table 17(b): Production of Soft Drinks .....	32
Table 17(c): Production of Assembled Vehicles .....	32
Table 17(d): Production of Galvanized Sheets.....	33
Table 17(e): Cement Production and Consumption .....	33
Table 17(f): Milk Intakes in the Formal Sector.....	34
Table 18: Visitor Arrivals through JKIA and MIA.....	35
Table 19(a): Jomo Kenyatta international Airport-Embarked Passengers by Port of Destination .....	36
Table 19(b): Jomo Kenyatta international Airport- Landed Passengers by Port of Origin.....	36
Table 19(c): New Registration of Road Motor Vehicles and Motorcycles by Type .....	37
Table 19(d): Passenger and Cargo Movement on the Standard Gauge Railway .....	38
Table 19(e): Metre Gauge Railway (MGR) passenger and revenue .....	39
Table 19(f): Monthly Cargo Throughput at the port of Mombasa .....	40

Figure 1: Inflation Rates: 2024 - 2025 .....	7
Figure 2: Mean Monthly Foreign Exchange Rates of Kenya Shillings against Selected Major Currencies ...	8
Figure 3: Nairobi Securities Exchange 20 Share Index .....	10
Figure 4: Coffee Sales at the Nairobi Coffee Exchange .....	13
Figure 5: Tea Production .....	14
Figure 6: Cane Deliveries .....	15
Figure 7: Electricity Generation by Source .....	25
Figure 8: Average Prices for Liquefied Petroleum Gas in Kenya per 13 Kg cylinder .....	29
Figure 9: Sugar Production .....	31
Figure 10: Milk Intake in the Formal Sector .....	34
Figure 11: Visitor Arrivals through JKIA and MIA .....	35

### List of Acronyms and Abbreviations

AGO	Light diesel oil (Automotive Gas Oil)
BEC	Broad Economic Category
BRT	Bus Rapid Transport
CBK	Central Bank of Kenya
CBR	Central Bank Rate
CPI	Consumer Price Index
DMU	Diesel Multiple Units
FCD	Foreign currency deposits
ICT	Information and Communication Technology
IDO	Heavy diesel oil (Industrial Diesel Oil)
JKIA	Jomo Kenyatta International Airport
KG	Kilograms
KPLC	Kenya Power and Lighting Company
KSh	Kenya Shilling
KWH	Kilo Watt Hour
LPG	Liquefied petroleum gas
M1	Narrow Money supply
M2	Money supplied by CBK, Commercial Banks and Micro Finance Institutions
M3	M2 plus Foreign Currency Holdings by Residents
MGR	Meter Gauge Railway
MIA	Mombasa International Airport
MT	Metric Tonnes
NBFI	Non-Bank Financial Institutions
NFA	Net Foreign Assets
NSE	Nairobi Securities Exchange
OPEC	Organisation of the Petroleum Exporting Countries
POL	Petroleum, Oil and Lubricants
SA Rand	South Africa Rand
SGR	Standard Gauge Railway
TSHS	Tanzania Shilling
UAE	United Arab Emirates
US\$/ BBL	US Dollar per Barrel
USD	United States Dollar
USHS	Uganda Shilling

## KEY HIGHLIGHTS

The Monthly Leading Economic Indicators report highlights changes in Consumer Price Indices, inflation rates, interest rates and exchange rates. In addition, the report details changes in selected indicators of international trade, agriculture, energy, manufacturing, construction, tourism and transport.

## MACROECONOMIC INDICATORS

The Consumer Price Index (CPI) increased from an index of 141.66 in December 2024 to 142.68 in January 2025, as shown in Table 1(a). The overall year-on-year inflation rate, as measured by the CPI, was 3.3 per cent in January 2025, as presented in Table 1(b).

In January 2025, the Kenyan Shilling appreciated against all the selected major trading currencies except for the US Dollar, as shown in Table 2. The average yield rate for 91-day Treasury Bills declined from 10.32 per cent in December 2024 to 9.63 per cent in January 2025. The Central Bank of Kenya maintained its benchmark interest rate at 11.25 per cent in January 2025. Interbank rates decreased from 11.45 per cent in December 2024 to 11.21 per cent in January 2025. The weighted average lending rate at commercial banks fell from 16.89 per cent to 16.64 per cent, while overdraft rates declined from 15.75 per cent to 15.38 per cent. Additionally, the weighted average deposit rate dropped from 10.45 per cent to 10.05 per cent, and the savings rate at commercial banks decreased from 4.25 per cent to 4.08 per cent during the same period, as shown in Table 3.

The NSE 20 Share Index increased from 2,011 points in December 2024 to 2,163 points in January 2025. During the same period, the total volume of shares traded decreased from 846 million to 632 million, while equity turnover declined from KSh 29.4 billion to KSh 9.6 billion. In contrast, the number of equity transactions rose from 26,746 in December 2024 to 49,388 in January 2025, as shown in Table 4.

The total money supply (M1) increased from KSh 2.04 trillion in December 2024 to KSh 2.05 trillion in January 2025. Similarly, total money supply (M2) grew from KSh 4.79 trillion to KSh 4.80 trillion during the same period. The broader money supply (M3) expanded by 0.01 per cent, reaching KSh 6.05 trillion in January 2025, as shown in Table 5(a). Gross foreign exchange reserves declined from KSh 2.14 trillion in December 2024 to KSh 2.05 trillion in January 2025. Likewise, net foreign exchange liabilities dropped from KSh 844.1 billion to KSh 820.3 billion, as shown in Table 5(b).



The volume of coffee auctioned at the Nairobi Coffee Exchange grew from 2.5 thousand metric tonnes (MT) in November 2024 to 3.3 thousand MT in December 2024. During the same period, the price per kilogram (kg) increased from USD 5.83 to USD 6.65, as presented in Table 6.



Tea production increased from 47.4 thousand MT in November 2024 to 55.8 thousand MT in December 2024. However, tea auction volumes declined from 31.1 thousand MT in November 2024 to 23.7 thousand MT in December 2024. The average auction price fell from USD 2.22 per kg in November 2024 to USD 2.19 per kg in

December 2024, as shown in Table 7.



Cane deliveries increased from 637.3 thousand MT in December 2024 to 827.5 thousand MT in January 2025, as shown in Table 8. Tables 9(b) and 9(d) present the average retail market prices for one kg of maize and one kg of beans, respectively. The average monthly retail market price of one kg of maize increased from KSh 51.6 in December 2024 to KSh 52.0 in January 2025. In contrast, the average monthly retail market price of one kg of beans decreased from KSh 150.2 to KSh 147.5 during the same period.

The volume of coffee exports grew from 2.6 thousand MT in December 2024 to 3.9 thousand MT in January 2025, with its export value rising from KSh 1.9 billion to KSh 3.3 billion. Likewise, tea exports increased from 49.7 thousand MT in December 2024 to 53.3 thousand MT in January 2025, while their export value rose from KSh 13.8 billion to KSh 15.5 billion, as shown in Table 10.





The total trade volume rose from KSh 298.7 billion in December 2024 to KSh 316.8 billion in January 2025. During the same period, export value grew from KSh 80.7 billion to KSh 87.2 billion, while import value increased from KSh 218.0 billion to KSh 229.6 billion, as shown in Table 12.

In January 2025, Uganda, Pakistan, and the Netherlands were Kenya's leading export destinations, with export values of KSh 9.8 billion, KSh 6.7 billion, and KSh 5.9 billion, respectively, as shown in Table 13(a). Food and beverages were the dominant export category, making up 42.0 per cent of total exports. Non-food industrial supplies accounted for 28.3 per cent, while machinery and other capital equipment represented 2.0 per cent, as presented in Table 13(b).

China, the United Arab Emirates, and India were Kenya's leading import partners in January 2025, with import values of KSh 53.7 billion, KSh 35.0 billion, and KSh 25.4 billion, respectively, as shown in Table 14(a). Non-food industrial supplies were the predominant import category, accounting for 38.6 per cent of total imports. Fuel and lubricants made up 23.4 per cent, while machinery and other capital equipment comprised 15.3 per cent. Food and beverages constituted 8.1 per cent of total imports, as shown in Table 14(b).



The number of active mobile money agents grew from 381,116 in December 2024 to 382,873 in January 2025, while mobile money subscriptions increased from 82.4 million to 83.4 million. During the same period, the total number of transactions fell from 309.3 million to 294.6 million, while the total transaction value declined from KSh 753.5 billion to KSh 697.5 billion, as shown in Table 14(c).

The export value of telecommunications equipment declined from KSh 434.6 million in December 2024 to KSh 67.1 million in January 2025. In contrast, the import value rose from KSh 1.7 billion to KSh 3.2 billion during the same period. Notably, the export value of automatic data processing machines and storage units increased from KSh 28.3 million in December 2024 to KSh 47.3 million in January 2025, as shown in Table 14(d).



Local electricity generation rose from 1,059.0 million kWh in December 2024 to 1,085.1 million kWh in January 2025. Geothermal was the leading source, generating 483.3 million kWh, followed by hydro at 282.7 million kWh in January 2025. Notably, thermal generation increased by 11.4 per cent, from 103.4 million kWh in December 2024 to 115.2 million kWh in January 2025, while wind generation grew by 7.7 per cent, from 148.0 million kWh to 159.4 million kWh during the same period, as shown in Table 15(a).

Total electricity generation and imports increased from 1,187.1 million kWh in December 2024 to 1,231.8 million kWh in January 2025, while total electricity imports increased from 128.1 million kWh to 146.6 million kWh during the same period. Imports from Uganda declined from 18.7 million kWh to 16.8 million kWh, while imports from Ethiopia rose from 107.7 million kWh to 124.0 million kWh, during the same period.

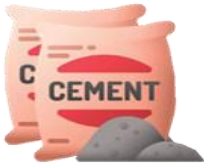
Total electricity generation and imports increased from 1,187.1 million kWh in December 2024 to 1,231.8 million kWh in January 2025, while total electricity imports increased from 128.1 million kWh to 146.6 million kWh during the same period. Imports from Uganda declined from 18.7 million kWh to 16.8 million kWh, while imports from Ethiopia rose from 107.7 million kWh to 124.0 million kWh, during the same period.

KPLC's total sales grew from 882.1 million kWh in December 2024 to 956.8 million kWh in January 2025, while total electricity exports increased from 4.5 million kWh to 8.1 million kWh during the same period. Exports to Uganda rose from 3.3 million kWh to 4.6 million kWh, while exports to Tanzania more than tripled, increasing from 1.1 million kWh to 3.5 million kWh, as presented in Table 15(b).

In January 2025, the national average retail prices stood at KSh 177.25 per litre for motor gasoline premium, KSh 167.84 per litre for light diesel oil, and KSh 152.18 per litre for illuminating kerosene. Charcoal was priced at an average of KSh 86.22 per kg, while a 13-kg gas cylinder averaged KSh 3,122.16, as outlined in Table 15(e). On the international market, the OPEC crude oil basket price increased from USD 73.07 per barrel in December 2024 to USD 79.38 per barrel in January 2025, as presented in Table 15(f).



## MANUFACTURING AND TRANSPORT



Sugar production increased from 57.2 thousand MT in December 2024 to 73.2 thousand MT in January 2025, as shown in Table 17(a). Soft drinks production dropped from 78.1 million litres in December 2024 to 58.9 million litres in January 2025, as shown in Table 17(b). The number of assembled vehicles increased from 711 units in December 2024 to 921 units in January 2025, as shown in Table 17(c). The production of galvanized sheets decreased from 24.5 thousand MT in December 2024 to 22.6 thousand MT in January 2025, as shown in Table 17(d). Cement production rose from 756.1 thousand MT in December 2024 to 813.6 thousand MT in January 2025. Similarly, cement consumption increased from 752.3 thousand MT to 801.6 thousand MT, as shown in Table 17(e).



The number of passengers traveling by the Standard Gauge Railway (SGR) rose from 218,192 in November 2024 to 251,920 in December 2024, accompanied by an increase in revenue from KSh 389.8 million to KSh 453.0 million. During the same period, the volume of cargo transported via SGR declined from 600.7 thousand tonnes to 569.5 thousand tonnes, while revenue grew from KSh 1.2 billion to KSh 1.3 billion, as presented in Table 19(d). Metre Gauge Railway (MGR) passenger usage declined from 205,030 in November 2024 to 166,087 in December 2024. However, revenue from MGR passenger traffic increased from KSh 11.2 million to KSh 17.5 million during the same period, as shown in Table 19(e).

Table 19(f) presents data on Mombasa Port throughput. The total volume of cargo handled grew from 3.5 million MT in November 2024 to 3.8 million MT in December 2024. During the same period, export volume increased from 379.6 thousand MT to 448.2 thousand MT, while imports rose from 2.5 million MT to 2.8 million MT. However, transshipment volume declined from 591.8 thousand MT to 573.7 thousand MT, and restows dropped from 12.4 thousand MT to 12.0 thousand MT.





**Table 1(a): Consumer Price Indices**

Base : February 2019=100						
Period/Group	Nairobi				Rest of Urban Areas	Kenya CPI
	Lower Income	Middle Income	Upper Income	Nairobi Combined		
<b>2023</b>						
January	130.98	118.93	117.93	125.57	131.94	129.29
February	131.92	119.38	118.32	126.29	132.86	130.13
March	132.97	119.90	118.81	127.10	134.09	131.18
April	133.49	120.76	119.07	127.70	134.77	131.83
May	134.64	121.47	120.10	128.69	136.08	133.01
June	135.67	122.27	120.62	129.59	137.16	134.01
July	135.57	122.37	121.11	129.63	137.37	134.15
August	135.39	122.59	121.21	129.60	137.17	134.02
September	136.68	124.05	123.20	131.03	138.38	135.32
October	138.22	124.94	124.48	132.33	139.83	136.71
November	138.49	125.17	124.75	132.58	140.20	137.03
December	138.89	125.94	125.43	133.14	140.69	137.55
<b>2024</b>						
January	139.19	126.94	125.97	133.69	141.33	138.15
February	139.47	127.41	126.39	134.05	141.39	138.34
March	139.95	127.48	126.58	134.37	141.72	138.66
April	139.59	127.21	126.35	134.05	141.50	138.40
May	141.02	127.96	126.96	135.17	142.82	139.64
June	141.50	128.59	127.14	135.65	143.48	140.23
July	141.05	128.35	127.09	135.32	143.22	139.94
August	141.15	128.66	127.00	135.47	143.00	139.87
September	141.34	129.12	127.47	135.77	143.24	140.13
October	141.48	129.86	127.75	136.12	143.50	140.44
November	141.89	130.37	128.09	136.56	143.83	140.81
December	143.26	130.83	128.47	137.52	144.60	141.66
<b>2025</b>						
January	144.55	131.79	128.96	138.62	145.58	142.68

**Notes**

1.Nairobi Lower Income Group constitute of Households spending KSh. 46,355 or less per month in February 2015 (they are 70.89% of the households).

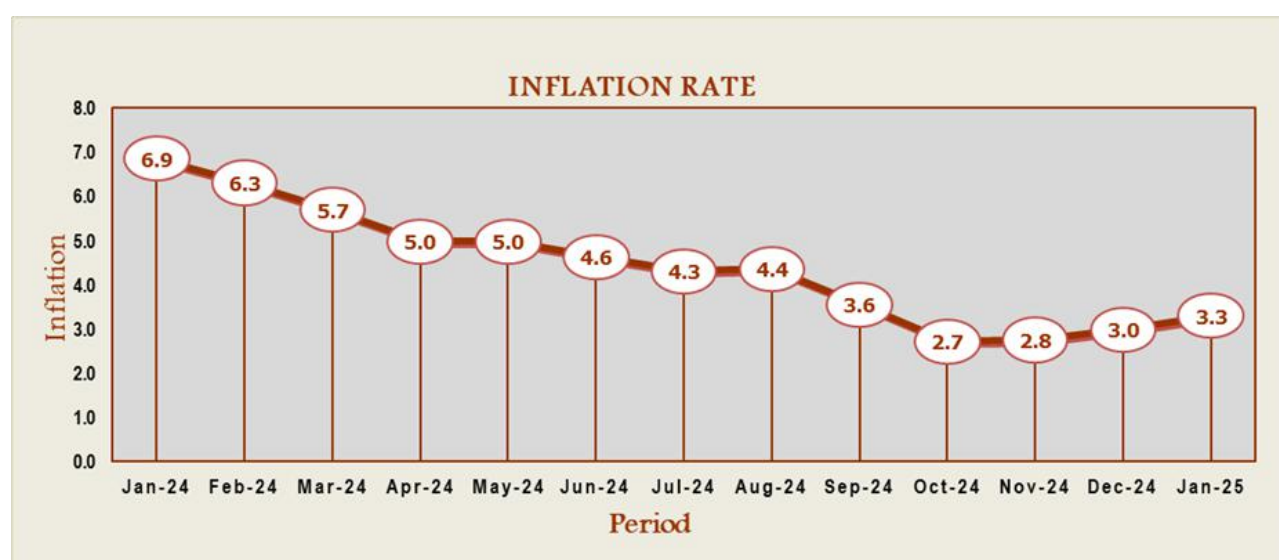
2.Nairobi Middle-Income Group constitute of Households spending between KSh. 46,356 up to and including KSh. 184,394 per month in February 2015 (they are 25.58% of the households).

3.Nairobi Upper Income Group constitute of Households spending above KSh. 184,395 per month in February 2015 (they are 3.53% of the households).

**Table 1(b): Inflation Rates**

Inflation Rates						
Period/Group	Nairobi				Rest of Urban Areas	Kenya Inflation
	Lower Income	Middle Income	Upper Income	Nairobi Combined		
<b>2023</b>						
January	9.11	7.69	7.05	8.44	9.35	<b>8.98</b>
February	9.25	7.73	7.10	8.54	9.70	<b>9.23</b>
March	9.04	7.57	6.75	8.34	9.77	<b>9.19</b>
April	7.71	6.96	5.57	7.24	8.35	<b>7.90</b>
May	7.81	7.02	5.75	7.34	8.50	<b>8.03</b>
June	7.66	6.67	5.50	7.12	8.41	<b>7.88</b>
July	6.73	6.00	5.38	6.36	7.91	<b>7.28</b>
August	6.10	5.75	5.16	5.89	7.29	<b>6.73</b>
September	6.30	5.76	5.42	6.04	7.29	<b>6.78</b>
October	6.68	5.85	6.25	6.38	7.29	<b>6.92</b>
November	6.49	5.87	6.39	6.29	7.14	<b>6.80</b>
December	6.35	6.16	6.62	6.32	6.84	<b>6.63</b>
<b>2024</b>						
January	6.27	6.73	6.82	6.47	7.11	<b>6.85</b>
February	5.72	6.73	6.82	6.15	6.42	<b>6.31</b>
March	5.25	6.33	6.53	5.72	5.69	<b>5.70</b>
April	4.57	5.35	6.11	4.97	4.99	<b>4.99</b>
May	4.74	5.35	5.71	5.03	4.95	<b>4.98</b>
June	4.29	5.17	5.41	4.68	4.61	<b>4.64</b>
July	4.04	4.88	4.94	4.40	4.25	<b>4.31</b>
August	4.26	4.95	4.78	4.52	4.25	<b>4.36</b>
September	3.41	4.08	3.46	3.62	3.51	<b>3.56</b>
October	2.36	3.94	2.63	2.87	2.63	<b>2.72</b>
November	2.46	4.16	2.68	3.00	2.59	<b>2.75</b>
December	3.15	3.88	2.43	3.29	2.79	<b>2.99</b>
<b>2025</b>						
January	3.86	3.82	2.38	3.68	3.01	<b>3.28</b>

**Figure 1: Inflation Rates: 2024 - 2025**

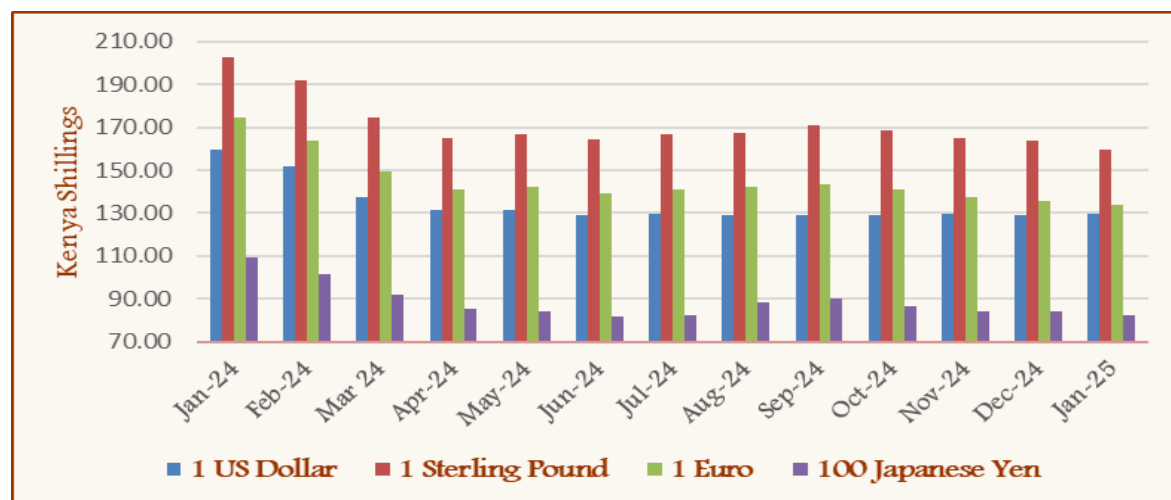


**Table 2: Mean Monthly Foreign Exchange Rates of Kenyan Shilling against Selected Major Currencies**

Currency/ Period	1 US Dollar	1 Pound Sterling	1 Euro	100 Japanese Yen	1 SA Rand	USHS/KES	TSHS/KES
<b>2023</b>							
January	123.93	151.33	133.43	95.05	7.25	29.79	18.85
February	125.45	151.87	134.53	94.66	7.03	29.36	18.64
March	129.74	157.35	138.79	96.95	7.09	28.84	18.04
April	134.40	167.26	147.39	100.71	7.40	27.87	17.45
May	137.26	171.35	149.22	100.14	7.22	27.18	17.18
June	139.73	176.27	151.37	99.12	7.46	26.54	17.08
July	141.45	182.06	156.29	100.16	7.76	25.93	17.26
August	143.93	182.92	157.10	99.45	7.69	25.61	17.31
September	146.77	182.29	156.89	99.46	7.74	25.48	17.04
October	149.40	181.86	157.77	99.86	7.83	25.13	16.76
November	152.03	188.57	164.21	101.48	8.20	24.89	16.46
December	154.09	194.98	167.98	106.77	8.26	24.54	16.28
<b>2024</b>							
January	159.69	202.88	174.31	109.40	8.50	23.84	15.79
February	151.84	191.67	163.78	101.58	7.99	25.58	16.80
March	137.35	174.58	149.31	91.77	7.27	28.40	18.60
April	131.57	164.69	141.13	85.57	6.96	29.07	19.63
May	131.69	166.47	142.40	84.50	7.15	28.79	19.70
June	129.36	164.54	139.36	82.02	7.02	29.03	20.23
July	129.87	166.91	140.75	82.22	7.12	28.54	20.56
August	129.32	167.28	142.44	88.45	7.17	28.78	20.93
September	129.20	170.74	143.52	90.34	7.34	28.73	21.08
October	129.20	168.79	140.94	86.41	7.36	28.40	21.09
November	129.40	165.06	137.53	84.16	7.22	28.43	20.61
December	129.36	163.64	135.55	84.30	7.11	28.34	19.21
<b>2025</b>							
January	129.39	159.80	134.00	82.63	6.91	28.50	19.36

Source: Central Bank of Kenya

**Figure 2: Mean Monthly Foreign Exchange Rates of Kenya Shillings against Selected Major Currencies**



**Table 3: Interest rate (%)**

Descriptions/ Period	Average Yield		Rates for Commercial			Average Deposit Rate	Inter – Bank Rates	Savings (Commercial Banks Rates)
	Rates 91 – Days Treasury Bills	Central Bank Rate	Banks Loans and Advances (Weighted Average)	Overdraft Rates				
<b>2023</b>								
January	9.44	8.75	12.77	12.34	7.47	5.89	3.60	
February	9.62	8.75	13.06	12.62	7.54	6.42	3.58	
March	9.76	9.50	13.09	12.69	7.60	7.05	3.55	
April	10.04	9.50	13.10	12.71	7.69	8.55	3.59	
May	10.47	9.50	13.21	12.64	7.61	9.36	3.92	
June	11.49	10.50	13.31	12.83	7.80	9.48	3.92	
July	12.12	10.50	13.50	12.84	8.10	10.34	3.97	
August	13.25	10.50	13.83	13.24	8.39	12.57	4.05	
September	14.38	10.50	13.98	13.62	8.64	12.36	4.00	
October	14.96	10.50	14.16	14.09	9.11	12.70	3.98	
November	15.32	10.50	14.43	14.29	9.48	11.32	4.01	
December	15.70	12.50	14.63	14.65	10.10	11.65	4.24	
<b>2024</b>								
January	16.14	12.50	15.20	15.11	10.18	13.65	3.69	
February	16.51	13.00	15.88	15.55	10.32	13.59	3.33	
March	16.68	13.00	16.28	15.97	10.52	13.42	3.90	
April	16.16	13.00	16.45	16.37	10.77	13.70	4.14	
May	15.91	13.00	16.60	16.52	11.13	13.62	4.45	
June	15.97	13.00	16.85	16.78	11.48	13.14	5.11	
July	16.00	13.00	16.84	16.43	11.28	13.17	4.56	
August	15.85	12.75	16.84	16.39	11.14	13.01	4.62	
September	15.75	12.75	16.91	16.83	11.24	12.67	3.57	
October	14.97	12.00	17.15	16.60	11.01	12.07	4.48	
November	13.06	12.00	17.22	16.53	10.41	11.99	3.54	
December	10.32	11.25	16.89	15.75	10.45	11.45	4.25	
<b>2025*</b>								
January	9.63	11.25	16.64	15.38	10.05	11.21	4.08	

Source: Central Bank of Kenya

\* Provisional

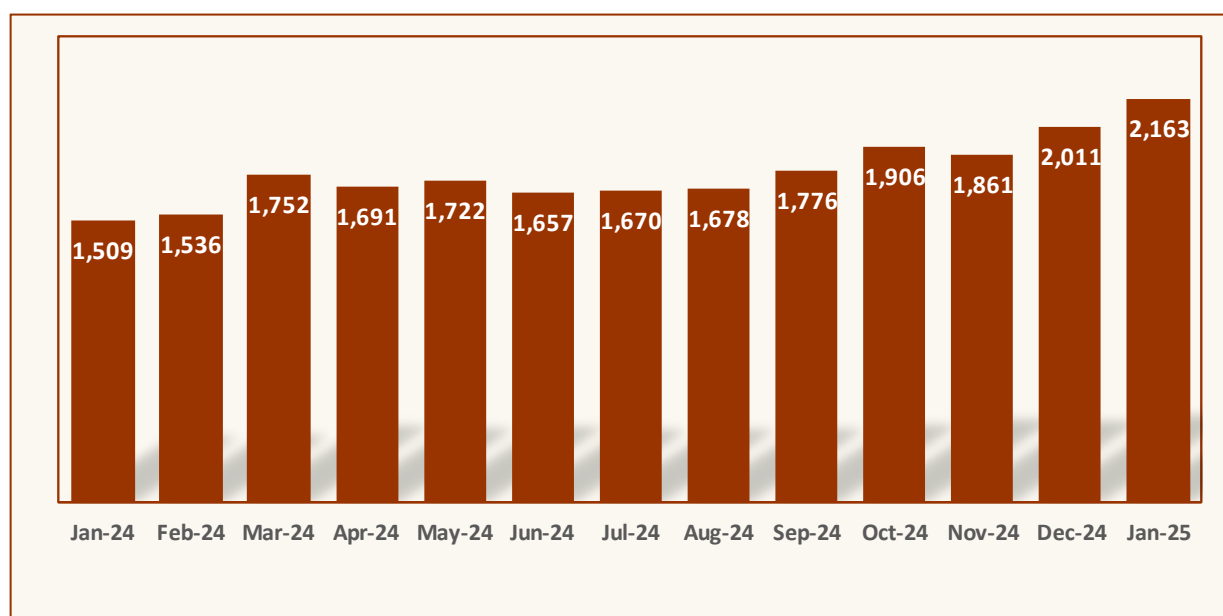
**Table 4: Nairobi Securities Exchange 20 Share Index**

Descriptions/ Period	Number of Equity Transactions	Number of Shares (Million)	Equity turnover (KSh Million)	NSE 20 Share Index
<b>2023</b>				
January	24,675	333	7,814	1,657
February	19,068	170	4,606	1,647
March	29,362	584	32,396	1,622
April	20,983	199	4,219	1,579
May	29,729	355	6,093	1,547
June	23,662	211	4,083	1,575
July	23,569	417	7,623	1,577
August	23,885	241	4,378	1,540
September	20,474	424	5,216	1,508
October	20,127	329	4,835	1,461
November	21,618	275	3,689	1,496
December	15,329	208	3,277	1,501
<b>2024</b>				
January	19,180	152	2,685	1,509
February	20,275	276	4,605	1,536
March	25,008	670	11,775	1,752
April	27,190	301	7,334	1,691
May	27,334	510	16,040	1,722
June	23,076	279	5,016	1,657
July	26,039	294	5,862	1,670
August	25,560	392	6,511	1,678
September	27,733	334	5,019	1,776
October	31,857	382	4,942	1,906
November	31,872	501	6,787	1,861
December	26,746	846	29,391	2,011
<b>2025</b>				
January	49,388	632	9,570	2,163

Source: Nairobi Securities Exchange Limited

Base Jan 1966=100

**Figure 3: Nairobi Securities Exchange 20 Share Index**



**Table 5(a): Money Supply**

						KSh million
Descriptions/ Period	Money (M1)*	Quasi – Money**	Total (M2)***	Foreign currency deposits	Broad Money (M3)***	% Change <sup>1</sup>
<b>2023</b>						
January	1,924,057	2,207,127	4,131,184	946,482	5,077,667	0.70
February	2,078,290	2,040,000	4,118,289	983,950	5,102,239	0.48
March	1,863,118	2,275,530	4,138,648	1,059,005	5,197,653	1.87
April	1,903,795	2,278,837	4,182,632	1,076,341	5,258,973	1.18
May	1,901,808	2,315,945	4,217,753	1,092,168	5,309,921	0.97
June	2,072,813	2,309,052	4,389,251	1,186,189	5,575,440	5.00
July	2,106,487	2,318,937	4,425,424	1,248,373	5,673,797	1.76
August	2,086,516	2,359,553	4,446,069	1,328,576	5,774,645	1.78
September	2,000,269	2,441,742	4,442,011	1,399,119	5,841,131	1.15
October	2,000,657	2,431,176	4,431,833	1,450,890	5,882,723	0.71
November	1,995,418	2,459,115	4,454,532	1,497,797	5,952,329	1.18
December	2,024,523	2,471,815	4,496,338	1,548,195	6,044,533	1.55
<b>2024</b>						
January	2,029,949	2,477,978	4,507,928	1,603,158	6,111,086	1.10
February	2,078,302	2,421,621	4,499,923	1,504,058	6,003,981	-1.75
March	1,972,685	2,508,854	4,481,539	1,315,423	5,796,962	-3.45
April	1,940,648	2,523,823	4,464,471	1,371,801	5,836,272	0.68
May	1,948,029	2,577,685	4,525,714	1,324,366	5,850,080	0.24
June	2,038,280	2,585,603	4,623,883	1,341,737	5,965,620	1.98
July	1,987,425	2,637,742	4,625,167	1,392,673	6,017,840	0.88
August	1,900,610	2,788,607	4,689,217	1,321,052	6,010,268	-0.13
September	1,953,455	2,698,474	4,651,929	1,340,222	5,992,151	-0.30
October	1,983,193	2,698,078	4,681,271	1,306,194	5,987,465	-0.08
November	2,013,442	2,756,508	4,769,949	1,312,433	6,082,383	1.59
December	2,042,353	2,746,578	4,788,931	1,259,601	6,048,533	-0.56
<b>2025</b>						
January	2,050,591	2,748,907	4,799,498	1,249,845	6,049,344	0.01

Source: Central Bank of Kenya(Expanded)

\* Currency in circulation less cash in banks plus all demand deposits except those of National & County government, Banks, non-residents and foreign currency deposits

\*\* All other deposits in commercial banks, except those of National government.

\*\*\*Broad money (M2) is the sum of M1, Quasi money in Banks and Quasi money in NBFIs..

\*\*\*\* Broad Money (M3) includes M2 and Foreign currency deposits

M2=(M1+QM-NBFIs)

M3=M2+FCD

<sup>1</sup> Percentage change of M3

**Table 5(b): Gross Foreign Exchange Reserves**

							KSh million*
Descriptions/ Period	Central Monetary Authority		Total	Foreign Assets		Gross Total	Net of Foreign Exchange Liabilities
	Central Bank	National Government**		Commercial Banks	NBFI		
<b>2023</b>							
January	931,499	2,376	<b>933,875</b>	487,917	362	<b>1,422,153</b>	247,454
February	911,017	2,385	<b>913,402</b>	521,306	107	<b>1,434,815</b>	235,002
March	921,769	2,521	<b>924,290</b>	613,377	96	<b>1,537,753</b>	311,230
April	963,265	2,594	<b>965,859</b>	600,488	168	<b>1,566,515</b>	326,890
May	977,742	2,606	<b>980,348</b>	627,000	221	<b>1,607,569</b>	354,713
June	1,136,049	2,652	<b>1,138,701</b>	720,723	236	<b>1,859,659</b>	594,125
July	1,129,071	2,714	<b>1,131,785</b>	814,743	250	<b>1,946,778</b>	628,959
August	1,112,768	2,745	<b>1,115,513</b>	875,971	221	<b>1,991,704</b>	675,250
September	1,118,738	2,760	<b>1,121,498</b>	935,472	684	<b>2,057,653</b>	711,269
October	1,137,401	2,803	<b>1,140,204</b>	973,984	607	<b>2,114,795</b>	746,556
November	1,132,252	2,898	<b>1,135,149</b>	1,043,486	1560	<b>2,180,195</b>	774,657
December	1,143,840	2,975	<b>1,146,815</b>	1,066,127	658	<b>2,213,600</b>	796,551
<b>2024</b>							
January	1,281,970	3,033	<b>1,285,003</b>	1,145,491	475	<b>2,430,969</b>	857,822
February	1,196,367	2,714	<b>1,199,081</b>	1,191,317	852	<b>2,391,249</b>	886,139
March	1,038,582	2,483	<b>1,041,065</b>	990,506	192	<b>2,031,764</b>	751,958
April	1,044,816	2,490	<b>1,047,306</b>	1,048,512	680	<b>2,096,498</b>	824,171
May	1,002,599	2,448	<b>1,005,047</b>	1,010,842	455	<b>2,016,343</b>	782,330
June	1,102,363	2,420	<b>1,104,783</b>	1,033,014	391	<b>2,138,188</b>	908,300
July	1,071,789	2,451	<b>1,074,241</b>	1,108,492	659	<b>2,183,391</b>	924,716
August	1,029,734	2,470	<b>1,032,203</b>	1,044,877	654	<b>2,077,735</b>	884,167
September	1,115,128	2,489	<b>1,117,616</b>	1,006,281	837	<b>2,124,734</b>	895,764
October	1,201,194	2,444	<b>1,203,638</b>	886,128	497	<b>2,090,263</b>	880,080
November	1,255,350	2,422	<b>1,257,772</b>	873,248	344	<b>2,131,364</b>	856,567
December	1,324,858	2,422	<b>1,327,280</b>	809,100	261	<b>2,136,642</b>	844,107
<b>2025<sup>+</sup></b>							
January	1,252,113	2,422	<b>1,254,535</b>	790,477	137	<b>2,045,149</b>	820,302

Source: Central Bank of Kenya

\* Includes encumbered reserves

\*\*National Government includes reserve position in the Fund and deposits with Crown Agents.

<sup>+</sup> Provisional

**Table 6: Coffee Sales and Prices**

Descriptions/ Period	2023			2024			2025*		
	QUANTITY (MT)	PRICE (\$ /Kg)	PRICE (KSh /Kg)	QUANTITY (MT)	PRICE (\$ /Kg)	PRICE (KSh /Kg)	QUANTITY (MT)	PRICE (\$ /Kg)	PRICE (KSh /Kg)
January	4,439.65	4.87	603.31	4,553.00	4.28	684.31	..	..	..
February	5,598.25	5.41	680.21	4,824.00	5.09	775.33			
March	5,072.50	4.80	621.55	5,070.00	4.84	665.42			
April	4,407.45	4.22	565.89	6,878.66	4.98	654.32			
May	1,373.50	4.41	603.87	3,462.38	3.97	523.40			
June	**	**	**	4,523.73	4.33	560.81			
July	**	**	**	939.89	4.03	519.79			
August	154.15	4.57	655.84	3,033.55	4.80	619.65			
September	339.85	4.67	685.08	2,648.57	4.91	633.52			
October	1,419.00	3.99	594.62	3,082.61	5.08	655.58			
November	1,677.00	3.69	559.87	2,540.41	5.83	754.14			
December	3,039.00	3.81	588.57	3,314.70	6.65	859.40			
<b>Annual</b>	<b>27,520.35</b>	<b>4.44</b>	<b>615.88</b>	<b>44,871.49</b>	<b>4.90</b>	<b>658.81</b>	..	..	..

Source: Agriculture and Food Authority ; Coffee Directorate

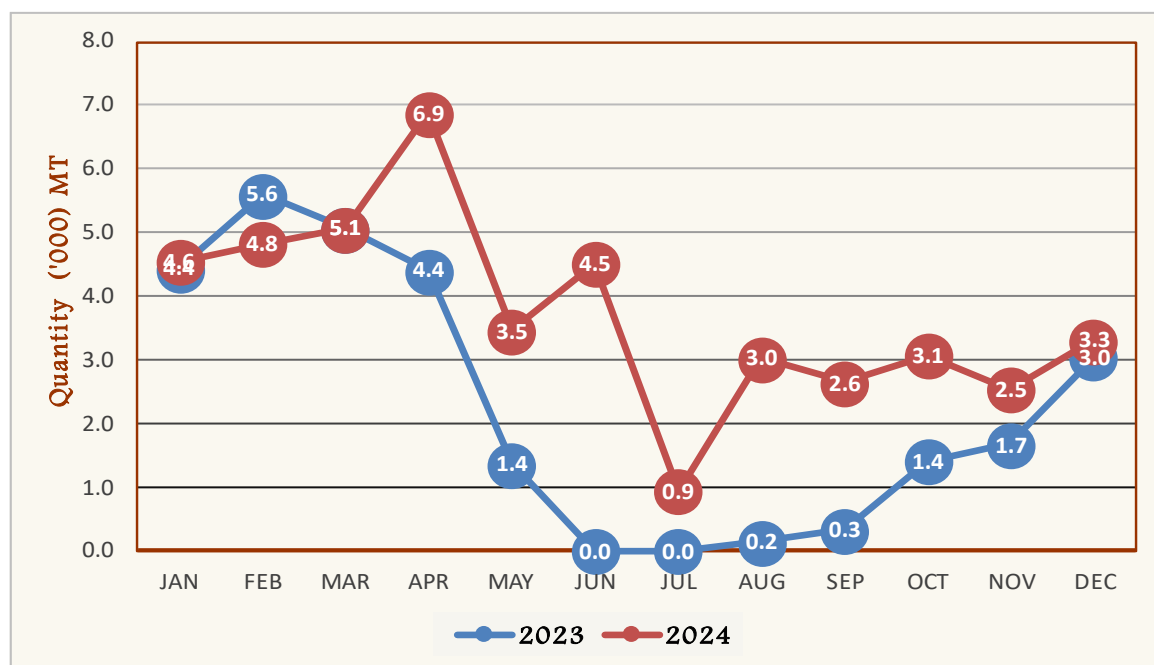
MT denotes Metric Tonnes

\*\* Nairobi Coffee Exchange was in recess in June 2023 and July 2023

\* Provisional

.. Data not available

**Figure 4: Coffee Sales at the Nairobi Coffee Exchange**





**Table 7: Tea Production, Auction Volume, and Prices**

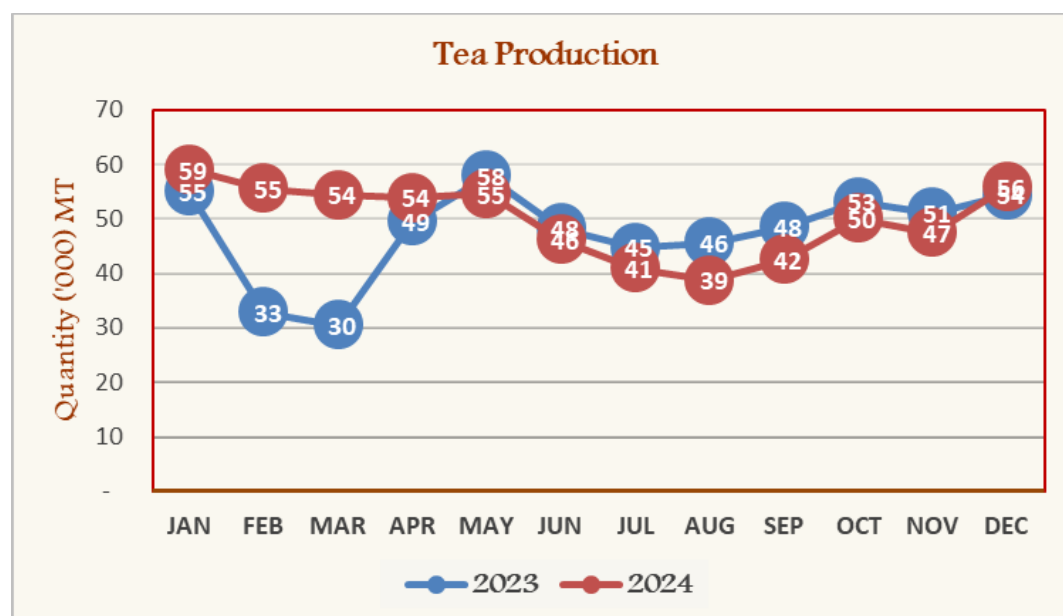
Descriptions/ Period	2023				2024				2025*			
	Production Volume (MT)	Auction Volume (MT)	Average Auction Price (USD/kg)	Average Auction Price (KSh/kg)	Production Volume (MT)	Auction Volume (MT)	Average Auction Price (USD/kg)	Average Auction Price (KSh/kg)	Production Volume (MT)	Auction Volume (MT)	Average Auction Price (USD/kg)	Average Auction Price (KSh/kg)
January	54,919.19	39,621.61	2.33	288.71	58,966.89	42,484.59	2.19	349.72	..	..	..	..
February	32,730.27	32,227.62	2.31	290.67	55,447.32	39,118.44	2.23	338.60	..	..	..	..
March	30,488.79	27,393.28	2.39	310.52	54,347.40	42,352.78	2.15	295.30	..	..	..	..
April	49,491.39	32,928.63	2.39	320.82	53,852.78	43,630.73	2.29	301.30	..	..	..	..
May	57,885.91	30,759.34	2.19	300.45	54,529.18	31,055.20	2.18	287.08	..	..	..	..
June	48,127.89	29,729.64	2.09	291.87	46,160.63	28,469.43	2.14	276.83	..	..	..	..
July	44,696.62	33,371.87	2.06	291.30	40,826.14	34,147.70	2.21	287.01	..	..	..	..
August	45,577.65	30,740.16	2.25	323.97	38,628.82	25,110.27	2.26	284.50	..	..	..	..
September	48,497.30	27,372.57	2.25	329.46	42,413.38	22,605.07	2.07	290.70	..	..	..	..
October	52,792.67	38,632.75	2.16	322.60	50,060.90	32,582.47	2.10	267.44	..	..	..	..
November	50,905.52	33,172.10	2.17	329.82	47,412.59	31,084.32	2.22	287.25	..	..	..	..
December	54,335.96	26,950.83	2.19	337.00	55,831.68	23,729.20	2.19	283.30	..	..	..	..
<b>Annual</b>	<b>570,449.16</b>	<b>382,900.39</b>	<b>2.23</b>	<b>311.43</b>	<b>598,477.72</b>	<b>396,370.17</b>	<b>2.19</b>	<b>295.75</b>	..	..	..	..

Source ; Tea Board of Kenya

\*Provisional

.. Data not available

**Figure 5: Tea Production**



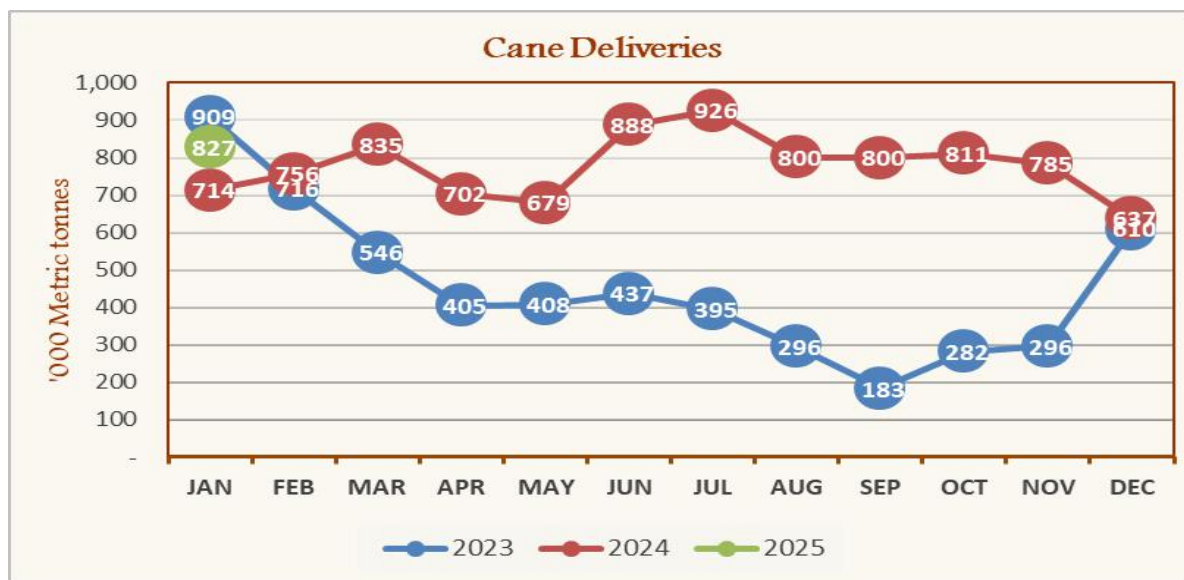
**Table 8: Cane Deliveries**

Period	000 Metric Tonnes					
	2020	2021	2022	2023	2024	2025*
January	522.89	681.54	691.11	908.58	713.51	827.48
February	529.94	660.44	664.01	716.27	756.00	
March	583.14	709.46	825.18	546.15	834.88	
April	534.69	631.43	719.48	405.39	702.41	
May	544.36	636.46	673.20	408.19	679.31	
June	572.37	639.35	763.30	436.69	887.60	
July	625.61	636.55	751.84	395.23	926.38	
August	629.10	679.56	512.85	295.81	800.29	
September	645.31	517.93	680.00	182.97	800.05	
October	644.24	551.68	824.14	282.08	810.74	
November	594.18	663.71	779.61	296.17	784.76	
December	468.59	649.40	700.70	610.02	637.28	
<b>Total</b>	<b>6,894.40</b>	<b>7,657.50</b>	<b>8,585.40</b>	<b>5,483.55</b>	<b>9,333.21</b>	<b>827.48</b>

Source : Kenya Sugar Board

\* Provisional

**Figure 6: Cane Deliveries**





**Table 9(b): Average Monthly Retail Prices for Dry Maize, 2025 (per Kg)**

County	Market	Month
		Jan
Mombasa	Mwembe Tayari	60.0
	Majengo	60.0
	Mackinon	70.0
	Sega	65.0
	Kongowea	54.0
Kilifi	Kibauni Kilifi	50.0
Lamu	Mkunguni	70.0
Taita/Taveta	Voi	50.0
Meru	Maua	57.8
	Kianjai	53.3
	Gakromere	54.3
Tharaka-Nithi	Chuka Town	61.4
Embu	Runyenjes	47.6
	Embu Town	47.6
	Iciara	47.6
	Kiritiri	47.6
	Siakago	47.6
Makueni	Wote	49.0
Nyandarua	Oi Kalou	50.0
Nyeri	Nyeri	48.2
	Karatina	54.9
Murang'a	Makuyu	57.9
Kiambu	Thika	62.0
	Githurai	76.0
	Gatundu	60.0
Uasin Gishu	Burn Forest	40.7
	Turbo	41.9
	Kipkaren	40.0
Nandi	Kapsabet	42.8
Baringo	Kabarnet	40.7
Nakuru	Nakuru Town	55.0
Bomet	Mulot	48.0
Kakamega	Butere	43.5
	Kakamega	44.3
	Mumias	43.1
Vihiga	Mbale	43.5
Bungoma	Bungoma Town	44.3
	Bumala	44.0
Busia	Busia Town	50.0
	Siaya	46.5
Siaya	Ngija	53.8
	Kiboswa	47.0
	Kibuye	47.0
Kisumu	Ahero	49.3
	Sondu	49.4
	Homabay	48.6
Homa Bay	Soko Mjinga	45.8
	Migori	36.0
Nairobi City	Kawangware	53.8
	Burma	52.2
	Gikomba	55.6
	Toi	55.4
	Kayole	60.0
<b>Total</b>		<b>52.0</b>

The total price is the average weighted prices depending on the number of markets and number of cycles per county.

.. Data not available



**Table 9(d): Average Monthly Retail Prices for Dry Beans, 2025 (per Kg)**

County	Market	Month
		Jan
Kiambu	Thika	172.0
	Githurai	148.7
	Gatundu	144.2
Muran'ga	Makuyu	106.2
Nyandarua	Oi Kalou	150.0
Nyeri	Nyeri	121.8
	Karatina	173.1
Kilifi	Kibauni Kilifi	118.0
Taita/Taveta	Voi	133.3
Lamu	Mkunguni	132.0
Mombasa	Mwembe Tayari	116.0
	Majengo	120.0
	Mackinon	126.0
	Sega	124.0
	Kongowea	92.0
Embu	Runyenjes	142.9
	Embu Town	142.9
	Iciara	142.9
	Kiritiri	142.9
	Siakago	142.9
Meru	Maua	137.8
	Kianjai	112.2
	Gakoromere	153.1
Tharaka-Nithi	Chuka Town	128.5
Makueni	Wote	160.0
Kisumu	Kibuye	159.1
	Ahero	126.1
	Kiboswa	145.8
	Sondu	152.8
Siaya	Siaya	223.8
	Ngija	222.4
Homabay	Homabay	153.8
Migori	Migori	195.7
Homabay	Soko Mjinga	134.6
Baringo	Kabarnet	168.6
Nakuru	Nakuru Town	131.3
Nandi	Kapsabet	152.2
Bomet	Mulot	144.6
Uasin Gishu	Burn Forest	122.0
	Turbo	129.2
	Kipkaren	130.4
Bungoma	Bungoma Town	128.7
Busia	Bumala	152.0
	Butere	198.8
Kakamega	Kakamega	196.8
	Mumias	193.0
Vihiga	Mbale	204.3
	Kawangware	65.2
Nairobi City	Burma	195.7
	Gikomba	177.2
	Toi	200.0
	Kayole	140.0
<b>Total</b>		<b>147.5</b>

*The total price is the average weighted prices depending on the number of markets and number of cycles per county.*

**Table 10: Exports of Coffee and Tea**

Descriptions/ Period	COFFEE *		TEA	
	Quantity (MT)	KSh Million	Quantity (MT)	KSh Million
<b>2024</b>				
January	2,685.80	2,112.12	51,187.58	18,267.60
February	2,745.22	2,134.13	59,043.65	20,429.82
March	4,291.32	3,349.81	59,599.15	19,070.04
April	5,370.52	3,926.59	56,263.44	17,337.26
May	4,732.90	3,613.65	51,575.28	15,610.13
June	5,800.46	4,124.43	42,894.74	11,752.08
July	6,990.51	4,935.89	54,305.88	15,518.53
August	5,728.78	3,710.28	50,821.46	14,713.16
September	5,013.51	3,378.43	51,935.51	14,395.84
October	3,391.68	2,346.14	44,652.10	12,514.52
November	4,121.77	2,890.06	53,544.20	15,546.37
December	2,647.28	1,901.37	49,731.26	13,808.09
<b>2025</b>				
January	3,863.81	3,313.87	53,309.18	15,502.69

Source: KRA Customs and Border Control Services department

\* Coffee, not Roasted

**Table 11: Monthly Exports of Fresh Horticultural Produce**

Descriptions/ Period	Cut Flowers				Fruits				Vegetables			
	2024		2025*		2024		2025*		2024		2025*	
	Quantity (MT)	Value (KSh Million)	Quantity (MT)	Value (KSh Million)	Quantity (MT)	Value (KSh Million)	Quantity (MT)	Value (KSh Million)	Quantity (MT)	Value (KSh Million)	Quantity (MT)	Value (KSh Million)
January	8,403.00	7,456.30	..	..	8,449.40	1,727.10	..	..	7,256.30	2,608.60	..	..
February	9,868.80	8,712.00			11,032.90	2,115.60			5,627.60	2,145.90		
March	9,843.40	7,592.90			31,761.90	5,756.00			7,081.70	2,399.80		
April	9,088.10	5,851.90			26,037.50	4,387.50			5,744.30	1,778.80		
May	8,615.40	5,481.20			21,790.40	3,800.10			4,250.10	1,411.20		
June	6,705.40	4,308.20			24,296.90	4,275.50			4,200.10	1,495.00		
July	7,085.30	4,405.10			24,729.60	4,810.50			4,284.00	1,438.10		
August	7,272.80	4,522.20			20,825.00	4,239.50			7,158.40	1,964.50		
September	8,602.60	5,727.00			15,954.90	2,928.60			9,038.50	2,348.30		
October	9,769.90	6,464.20			13,679.70	2,466.50			7,508.00	2,164.20		
November	8,528.90	5,552.90			13,294.10	2,314.60			6,168.50	1,860.60		
December	8,692.20	6,015.80			13,562.40	2,210.00			5,986.60	1,830.10		
<b>Total</b>	<b>102,475.80</b>	<b>72,089.70</b>	-	-	<b>225,414.70</b>	<b>41,031.50</b>	-	-	<b>74,304.10</b>	<b>23,445.10</b>	-	-

Source: Agriculture and Food Authority; Horticultural Directorate

\* Provisional

.. Data not available

**Table 12: External Trade**

KSh Million						
Descriptions/ Period	Domestic Exports	Re- Exports	Total Exports	Total Imports	Volume of Trade	Home use Imports
<b>2024</b>						
January	79,668.56	12,007.06	91,675.62	244,573.36	336,248.98	176,246.21
February	89,806.12	17,616.68	107,422.81	226,412.35	333,835.16	161,567.92
March	84,404.65	13,528.72	97,933.36	208,228.95	306,162.32	151,579.56
April	74,711.21	18,211.92	92,923.13	236,210.91	329,134.04	173,826.77
May	75,452.77	19,029.65	94,482.42	212,570.44	307,052.86	160,349.70
June	71,945.71	15,208.34	87,154.05	208,614.25	295,768.31	149,836.22
July	80,488.50	16,553.69	97,042.19	226,054.51	323,096.70	167,210.79
August	79,637.12	13,722.03	93,359.14	226,509.40	319,868.54	170,728.10
September	76,599.24	14,426.92	91,026.16	219,412.67	310,438.83	169,409.66
October	69,935.66	18,395.68	88,331.34	244,515.12	332,846.46	186,280.52
November	76,143.42	9,777.19	85,920.62	227,665.15	313,585.77	174,251.46
December	69,428.07	11,249.81	80,677.88	217,997.80	298,675.68	160,798.34
<b>2025*</b>						
January	75,499.10	11,684.03	87,183.13	229,609.47	316,792.59	159,414.05

Source: Kenya Revenue Authority

\*Provisional

**Table 13(a): Major Destinations of Domestic Exports**

KSh Million											
Country/ Period	Uganda	Tanzania	United Kingdom	Pakistan	Netherlands	Egypt	Germany	Rwanda	USA	United Arab Emirates	France
<b>2024</b>											
January	8,627.42	4,087.69	5,891.89	6,754.63	6,286.69	2,891.83	1,618.82	2,858.59	7,302.32	4,106.82	1,147.41
February	11,781.47	4,868.06	7,025.26	6,896.60	7,528.80	3,960.91	1,948.15	2,975.15	5,136.83	4,894.43	1,239.17
March	9,261.92	4,430.71	5,839.65	7,562.59	7,228.46	3,553.19	1,923.21	2,711.50	5,399.02	4,207.71	1,122.37
April	8,890.76	3,806.19	4,817.97	7,610.92	5,300.27	1,870.82	1,746.81	2,367.80	4,675.52	3,440.17	922.64
May	10,601.18	4,092.11	4,376.36	6,699.41	5,316.35	1,083.35	1,625.82	2,801.53	5,025.36	3,432.40	1,025.22
June	10,066.70	3,597.05	4,019.54	3,740.77	4,748.04	1,787.87	1,421.38	3,104.61	6,100.57	3,152.61	1,274.84
July	10,820.88	4,727.31	4,764.15	7,084.83	4,774.36	1,749.18	2,129.26	3,414.48	7,465.18	3,378.03	1,118.56
August	9,854.92	5,078.24	4,233.34	7,260.30	4,104.44	1,894.68	1,716.80	3,951.63	6,887.16	4,149.47	1,324.00
September	10,801.94	4,394.27	4,632.71	6,061.52	4,491.02	2,044.31	1,383.11	4,293.95	6,111.82	3,097.40	1,350.29
October	6,945.45	3,422.65	5,082.83	4,766.44	5,493.53	1,872.54	1,342.59	2,992.24	6,460.55	3,718.78	1,093.96
November	8,908.91	5,062.60	4,532.96	6,595.02	4,917.06	2,400.83	1,206.74	2,534.62	6,352.34	3,433.93	1,171.52
December	7,378.01	4,275.08	5,045.28	5,229.90	4,948.97	2,333.01	880.92	2,899.75	6,046.27	3,764.65	974.52
<b>2025*</b>											
January	9,823.53	4,205.10	5,206.57	6,698.82	5,878.86	2,431.51	1,612.67	2,874.69	5,803.54	4,032.12	1,189.27

Source: Kenya Revenue Authority

\*Provisional



**Table 13(b): Domestic Exports by Broad Economic Category**

Descriptions/Period	KSh Million												
	2024												2025*
	Jan	Feb	March	April	May	June	July	Aug	Sep	Oct	Nov	Dec	Jan
Food and beverages	36,194.79	39,784.55	40,020.28	35,758.62	33,377.02	29,653.78	36,358.14	34,473.46	33,697.14	29,294.02	31,351.65	28,351.56	31,718.66
Industrial supplies (Non-Food)	20,455.75	22,206.90	19,573.32	18,320.25	19,683.49	21,087.19	20,028.30	21,272.45	18,937.97	17,652.62	19,783.67	17,898.71	21,335.33
Fuel and Lubricants	984.15	1,360.58	1,355.31	1,286.08	1,334.72	1,159.57	1,230.37	1,420.38	1,376.27	1,136.55	1,001.44	1,108.94	1,009.33
Machinery & other capital Equipment	1,283.64	1,500.74	1,063.80	1,708.67	1,487.34	1,300.27	1,507.09	1,638.88	1,527.59	1,465.36	1,543.72	1,419.51	1,538.54
Transport equipment	574.16	602.94	371.11	224.62	359.46	402.23	776.74	896.37	837.26	403.46	1,049.72	1,020.07	697.35
Consumer goods Not elsewhere specified	20,157.74	24,344.09	21,999.86	17,410.92	19,198.51	18,331.48	20,568.98	19,920.40	20,219.52	19,960.56	21,405.82	19,617.42	19,191.54
Goods not elsewhere specified	18.32	6.32	20.97	2.07	12.24	11.19	18.87	15.19	3.48	23.09	7.39	11.87	8.34
<b>Total</b>	<b>79,668.56</b>	<b>89,806.12</b>	<b>84,404.65</b>	<b>74,711.21</b>	<b>75,452.77</b>	<b>71,945.71</b>	<b>80,488.50</b>	<b>79,637.12</b>	<b>76,599.24</b>	<b>69,935.66</b>	<b>76,143.42</b>	<b>69,428.07</b>	<b>75,499.10</b>
<b>Percentage Shares:</b>													
Food and Beverages	45.43	44.30	47.41	47.86	44.24	41.22	45.17	43.29	43.99	41.89	41.17	40.84	42.01
Industrial Supplies (Non-Food)	25.68	24.73	23.19	24.52	26.09	29.31	24.88	26.71	24.72	25.24	25.98	25.78	28.26
Fuel and Lubricants	1.24	1.52	1.61	1.72	1.77	1.61	1.53	1.78	1.80	1.63	1.32	1.60	1.34
Machinery and other Capital Equipment..	1.61	1.67	1.26	2.29	1.97	1.81	1.87	2.06	1.99	2.10	2.03	2.04	2.04
Transport Equipment	0.72	0.67	0.44	0.30	0.48	0.56	0.97	1.13	1.09	0.58	1.38	1.47	0.92
Consumer Goods not elsewhere specified	25.30	27.11	26.06	23.30	25.44	25.48	25.56	25.01	26.40	28.54	28.11	28.26	25.42
Goods not elsewhere specified	0.02	0.01	0.02	0.00	0.02	0.02	0.02	0.02	0.00	0.03	0.01	0.02	0.01
<b>TOTAL</b>	<b>100.00</b>	<b>100.00</b>	<b>100.00</b>	<b>100.00</b>	<b>100.00</b>	<b>100.00</b>	<b>100.00</b>	<b>100.00</b>	<b>100.00</b>	<b>100.00</b>	<b>100.00</b>	<b>100.00</b>	<b>100.00</b>

Source: Kenya Revenue Authority (KRA)

\*Provisional

**Table 14(a): Major Origins of Imports**

Country/ Period	KSh Million										
	United Arab Emirates	United Kingdom	South Africa	Saudi Arabia	Japan	India	USA	Germany	Netherlands	France	China
<b>2024</b>											
January	21,541.70	2,492.73	12,130.15	3,222.45	9,417.36	28,605.38	16,744.97	2,847.59	1,877.49	1,845.96	44,722.23
February	23,931.98	3,629.20	5,112.02	1,770.65	9,768.12	25,214.84	13,447.09	4,051.98	9,743.13	1,749.10	45,375.38
March	21,558.14	2,955.08	4,656.81	2,321.57	8,273.44	18,185.30	10,924.71	3,031.36	8,366.45	2,663.32	35,978.73
April	24,458.57	3,119.48	5,450.21	7,550.45	9,545.79	20,393.74	17,897.28	3,064.55	7,700.44	2,458.92	42,532.73
May	36,935.83	6,997.96	5,797.15	2,644.96	8,820.97	16,119.16	11,403.12	3,869.03	2,097.29	3,176.54	46,978.94
June	29,507.96	4,069.22	3,842.15	2,597.84	8,438.16	21,221.88	7,721.67	3,192.81	2,018.71	2,320.69	42,112.93
July	28,548.50	3,404.78	4,383.87	4,270.99	9,326.06	19,597.44	10,232.43	3,363.00	3,285.08	2,988.58	59,670.08
August	31,011.70	3,071.55	2,795.87	2,068.31	8,521.08	26,115.02	11,073.06	6,928.91	1,810.44	2,753.04	57,204.18
September	29,256.69	3,888.73	6,572.64	2,877.91	8,748.66	18,836.09	11,288.08	3,263.42	2,655.31	1,845.27	53,397.49
October	34,671.94	3,825.39	6,706.39	8,062.84	9,444.54	22,354.65	25,247.93	3,258.19	1,779.21	3,809.26	52,924.00
November	23,094.18	5,837.19	5,212.52	12,730.42	9,968.68	28,280.58	9,914.33	3,427.19	2,161.23	2,246.44	43,811.96
December	33,099.49	2,613.27	3,976.85	2,272.48	9,329.33	18,824.56	9,807.82	3,198.27	3,169.05	2,791.32	53,232.56
<b>2025*</b>											
January	34,956.21	3,845.89	6,917.04	3,494.12	10,695.94	25,421.85	8,547.57	4,282.62	1,577.62	1,777.11	53,704.86

Source: Kenya Revenue Authority

\*Provisional

**Table 14(b): Imports by Broad Economic Category**

Descriptions/Period	2024												KSh Million
	2025*												
	Jan	Feb	Mar	Apr	May	June	July	Aug	Sep	Oct	Nov	Dec	Jan
Food and beverages	25,886.22	19,796.79	29,803.50	27,833.60	22,053.61	22,811.12	14,534.18	22,778.69	25,465.78	23,283.66	31,247.79	17,771.02	18,481.38
Industrial supplies (Non-Food)	86,102.43	76,035.29	72,488.28	79,440.33	71,938.77	72,809.35	81,520.35	69,801.92	77,113.78	80,501.50	84,483.18	82,067.44	88,624.25
Fuel and Lubricants	56,568.97	61,898.61	51,124.61	53,028.21	48,532.83	56,329.89	50,120.68	50,222.34	46,916.30	50,572.59	45,969.61	46,715.09	53,680.56
Machinery & other capital Equipment	27,056.61	28,272.66	23,677.84	32,828.14	31,210.97	24,177.13	35,013.41	29,628.57	31,947.45	32,701.33	25,960.50	31,320.74	35,215.34
Transport equipment	23,235.92	20,281.71	14,194.84	21,285.41	18,485.15	13,020.24	22,714.63	30,615.89	19,394.20	17,856.41	18,532.71	19,003.59	16,009.26
Consumer goods Not elsewhere specified	19,892.98	17,483.92	16,405.63	18,530.76	17,333.24	17,129.27	20,585.94	22,157.09	17,555.55	19,875.03	18,272.84	20,192.36	15,677.68
Goods not elsewhere specified	5,830.23	2,643.38	534.25	3,264.47	3,015.86	2,337.26	1,565.31	1,304.91	1,019.60	19,724.62	3,198.53	927.56	1,921.00
<b>Total</b>	<b>244,573.36</b>	<b>226,412.35</b>	<b>208,228.95</b>	<b>236,210.91</b>	<b>212,570.44</b>	<b>208,614.25</b>	<b>226,054.51</b>	<b>226,509.40</b>	<b>219,412.67</b>	<b>244,516.12</b>	<b>227,665.15</b>	<b>217,997.80</b>	<b>229,609.47</b>
<b>Percentage Shares:</b>													
Food and Beverages	10.58	8.74	14.31	11.78	10.37	10.93	6.43	10.06	11.61	9.52	13.73	8.15	8.05
Industrial Supplies (Non-Food)	35.21	33.58	34.81	33.63	33.84	34.90	36.06	30.82	35.15	32.92	37.11	37.65	38.60
Fuel and Lubricants	23.13	27.34	24.55	22.45	22.83	27.00	22.17	22.17	21.38	20.68	20.19	21.43	23.38
Machinery and other Capital Equipment..	11.06	12.49	11.37	13.90	14.68	11.59	15.49	13.08	14.56	13.37	11.40	14.37	15.34
Transport Equipment	9.50	8.96	6.82	9.01	8.70	6.24	10.05	13.52	8.84	7.30	8.14	8.72	6.97
Consumer Goods not elsewhere specified	8.13	7.72	7.88	7.85	8.15	8.21	9.11	9.78	8.00	8.13	8.03	9.26	6.83
Goods not elsewhere specified	2.38	1.17	0.26	1.38	1.42	1.12	0.69	0.58	0.46	8.07	1.40	0.43	0.84
<b>TOTAL</b>	<b>100.00</b>	<b>100.00</b>	<b>100.00</b>	<b>100.00</b>	<b>100.00</b>	<b>100.00</b>	<b>100.00</b>	<b>100.00</b>	<b>100.00</b>	<b>100.00</b>	<b>100.00</b>	<b>100.00</b>	<b>100.00</b>

Source: Kenya Revenue Authority

\*Provisional

**Table 14 (c): Mobile Money Transactions**

Descriptions/ Period	Active Mobile money Agents	Mobile money subscriptions (millions)	Number of Transactions (millions) <sup>1</sup>	Transaction value (KSh billions) <sup>2</sup>
<b>2024</b>				
January	321,340	76.76	211.58	783.98
February	320,182	77.33	213.34	790.80
March	320,276	77.73	207.81	747.73
April	331,614	77.44	203.55	711.67
May	334,088	77.24	208.13	722.27
June	334,046	77.92	201.06	676.01
July	340,889	78.61	204.17	705.85
August	348,065	78.64	214.25	705.91
September	367,551	79.37	196.49	670.52
October	358,621	80.82	215.26	722.28
November	383,624	81.55	297.02	707.27
December	381,116	82.43	309.28	753.45
<b>2025*</b>				
January	382,873	83.40	294.62	697.51

Source: Central Bank of Kenya

<sup>1</sup> Total agent cash in cash out

<sup>2</sup> Total agent cash in cash out

\*Provisional

**Table 14(d): International trade in ICT**

Descriptions/Period	KSh Million												
	2024												2025*
	Jan	Feb	Mar	Apr	May	Jun	Jul	Aug	Sep	Oct	Nov	Dec	Jan
<b>Imports</b>													
<b>Office machines</b> <sup>1</sup>	206.14	41.71	152.00	95.30	363.85	144.59	89.82	285.05	103.20	153.76	210.33	117.92	228.74
Automatic data processing machines, storage units etc	1,876.00	1,404.80	1,584.80	1,414.76	1,830.13	1,985.84	2,565.36	933.33	1,457.17	1,354.10	1,027.39	1,263.18	2,040.23
Part and accessories <sup>2</sup>	92.11	115.36	68.15	47.53	102.54	182.93	65.95	136.54	101.99	78.46	66.84	77.08	133.65
Monitors and projectors and reception apparatus for television <sup>3</sup>	338.03	576.42	730.71	508.27	1,096.88	794.35	1,019.35	919.82	680.06	902.88	1,095.42	610.31	739.72
Reception apparatus for radio broadcasting <sup>4</sup>	14.51	12.41	15.30	12.50	22.13	12.69	17.36	7.92	21.80	22.55	9.24	8.25	11.48
Recording equipments <sup>5</sup>	12.32	9.99	8.16	17.71	8.91	6.05	17.36	22.79	23.65	17.65	10.44	8.01	8.06
<b>Telecommunications equipment</b> <sup>6</sup>	<b>2,993.03</b>	<b>3,640.96</b>	<b>2,415.23</b>	<b>4,862.85</b>	<b>3,650.71</b>	<b>3,172.93</b>	<b>6,616.71</b>	<b>2,734.53</b>	<b>2,879.36</b>	<b>2,822.87</b>	<b>2,820.58</b>	<b>1,681.27</b>	<b>3,227.22</b>
<b>Exports</b>													
<b>Office machines</b> <sup>1</sup>	1.09	3.73	2.95	1.08	15.73	4.02	36.46	8.40	7.31	28.99	4.76	18.56	10.19
Automatic data processing machines, storage units etc	14.24	67.26	22.70	21.91	42.16	186.38	32.09	32.35	46.97	46.50	57.76	28.26	47.31
Part and accessories <sup>2</sup>	6.61	10.90	6.68	9.17	9.34	8.41	10.24	10.63	16.57	8.93	11.45	26.36	11.86
Monitors and projectors and reception apparatus for television <sup>3</sup>	1.97	15.36	38.01	1.64	6.30	8.78	36.90	16.31	5.76	5.10	7.87	40.96	7.67
Reception apparatus for radio broadcasting <sup>4</sup>	1.28	0.04	0.42	0.04	0.01	0.02	-	0.05	-	-	0.06	0.07	-
Recording equipments <sup>5</sup>	0.02	0.06	35.06	0.36	0.20	-	0.04	0.12	129.22	64.80	0.14	0.08	0.09
<b>Telecommunications equipment</b> <sup>6</sup>	<b>57.09</b>	<b>24.66</b>	<b>77.11</b>	<b>78.75</b>	<b>88.81</b>	<b>48.16</b>	<b>255.97</b>	<b>119.30</b>	<b>364.13</b>	<b>97.61</b>	<b>161.61</b>	<b>434.63</b>	<b>67.06</b>

Source: Kenya Revenue Authority (KRA)

<sup>1</sup> Electronic calculating machines, cash registers, accounting machines, postage-franking machines, ticket issuing machines, reproducing and displaying machines with calculating functions, duplicating machines and their parts/accessories etc

<sup>2</sup> For office machines and data processing machines

<sup>3</sup> Include Television sets, decoders etc

<sup>4</sup> Whether or not combined with sound recording or reproducing apparatus or a clock

<sup>5</sup> Sound recording, video recording or reproducing apparatus including or not including a video tuner

<sup>6</sup> Such as computer, laptops, networking equipments etc plus their parts and accessories such as telephone sets, microphones, electric sound amplifier sets Television cameras, digital or video cameras recorders, radio or tv transmission apparatus etc

\_ No data

\*Provisional

**Table 15(a): Local Electricity Generation by Source**

Descriptions/ Period	kWh Million						Total
	Hydro	Geo - Thermal	Thermal <sup>1</sup>	Wind	Solar	Co- Generation	
<b>2023</b>							
January	185.20	524.82	107.32	203.31	46.69	0.02	<b>1,067.36</b>
February	112.91	472.15	142.35	190.65	42.85	-	<b>960.91</b>
March	125.98	509.36	166.86	152.35	40.59	-	<b>995.14</b>
April	190.85	476.33	119.53	157.00	39.41	-	<b>983.12</b>
May	237.88	510.83	95.38	181.72	44.28	-	<b>1,070.09</b>
June	257.94	504.57	68.13	168.06	36.66	-	<b>1,035.36</b>
July	279.48	494.81	108.29	198.46	37.90	0.04	<b>1,118.98</b>
August	258.71	522.92	89.58	186.66	40.85	0.02	<b>1,098.74</b>
September	247.20	511.88	130.18	141.30	39.25	0.03	<b>1,069.84</b>
October	205.28	509.54	140.57	183.36	42.87	0.01	<b>1,081.62</b>
November	287.58	495.19	67.93	159.76	35.69	-	<b>1,046.15</b>
December	273.64	497.69	69.55	85.50	44.44	-	<b>970.83</b>
<b>2024</b>							
January	254.51	506.91	90.65	136.13	38.28	-	<b>1,026.49</b>
February	261.66	446.76	74.57	156.14	39.82	0.00	<b>978.96</b>
March	291.10	442.68	79.31	198.72	40.17	0.00	<b>1,051.98</b>
April	362.38	421.94	93.47	82.96	37.04	0.01	<b>997.79</b>
May	349.21	440.57	99.43	95.39	38.92	0.00	<b>1,023.51</b>
June	324.94	416.81	83.59	156.42	38.40	0.00	<b>1,020.15</b>
July	358.23	471.83	102.77	134.71	31.34	0.00	<b>1,098.89</b>
August	320.88	483.33	99.49	158.06	34.44	0.00	<b>1,096.21</b>
September	270.96	455.23	92.30	190.61	36.42	0.00	<b>1,045.51</b>
October	276.60	493.29	110.59	182.34	40.66	0.00	<b>1,103.49</b>
November	273.92	495.31	99.86	158.16	40.08	-	<b>1,067.34</b>
December	286.31	476.34	103.44	148.03	44.88	-	<b>1,059.00</b>
<b>2025*</b>							
January	282.66	483.29	115.20	159.35	44.63	-	<b>1,085.14</b>

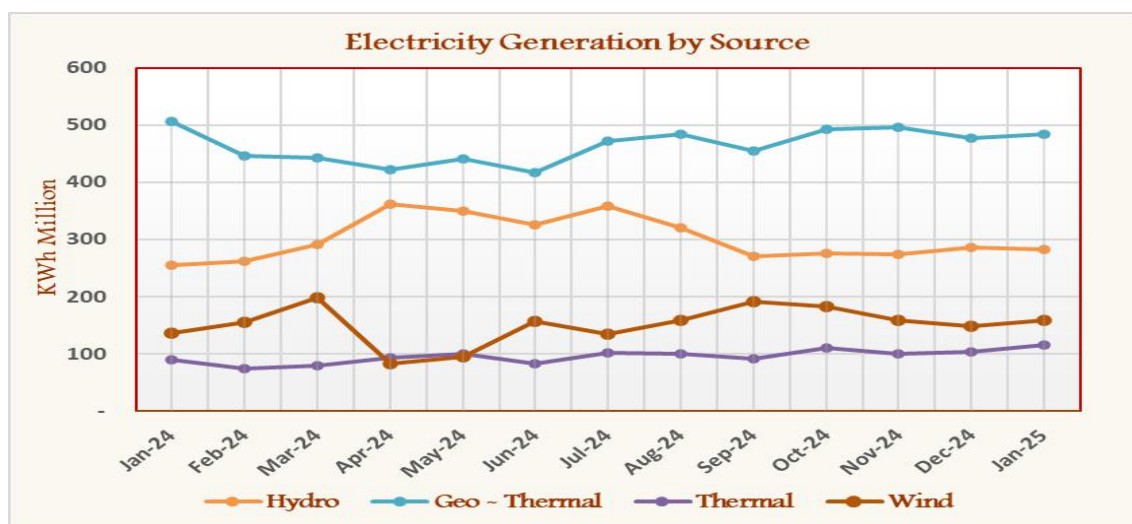
Source: Kenya Power

\*Provisional

<sup>1</sup> Includes all offgrid power

- No data

**Figure 7: Electricity Generation by Source**



**Table 15(b): Generation and Consumption of Electricity**

Million kWh										
Descriptions/ Period	Generation and imports						Consumption and Exports			
	Local Generation	Uganda	Ethiopia	Tanzania	Total Imports	Total (Generation and Imports)	Total KPLC Sales	Uganda	Tanzania	Total Exports
<b>2023</b>										
January	1,067.36	28.75	39.73	0.00	68.48	1,135.84	870.84	1.83	0.00	1.83
February	960.91	18.76	65.52	0.00	84.28	1,045.19	828.70	2.51	0.00	2.51
March	995.14	22.50	113.04	0.00	135.54	1,130.68	847.47	2.58	0.00	2.58
April	983.12	24.17	70.50	0.00	94.67	1,077.79	844.34	1.89	0.00	1.89
May	1,070.09	25.80	33.93	0.00	59.73	1,129.82	873.24	1.55	0.00	1.55
June	1,035.36	21.25	34.72	0.00	55.97	1,091.33	850.53	2.31	0.00	2.31
July	1,118.98	19.23	20.64	0.00	39.87	1,158.85	881.01	2.91	0.00	2.91
August	1,098.74	14.85	40.62	0.00	55.48	1,154.22	885.17	4.45	0.00	4.45
September	1,069.84	10.68	39.25	0.00	49.93	1,119.77	874.35	4.92	0.00	4.92
October	1,081.62	26.54	40.48	0.00	67.02	1,148.64	877.48	2.05	0.00	2.05
November	1,046.15	20.06	48.07	0.00	68.13	1,114.28	859.43	2.79	0.00	2.79
December	970.83	17.13	121.57	0.00	138.70	1,109.52	828.34	4.01	0.00	4.01
<b>2024</b>										
January	1,026.49	20.29	121.96	0.00	142.25	1,168.73	881.37	3.41	0.00	3.41
February	978.96	18.13	113.35	0.00	131.48	1,110.44	854.01	3.38	0.00	3.38
March	1,051.98	17.43	110.97	0.00	128.40	1,180.38	878.93	3.86	0.00	3.86
April	997.79	17.99	110.91	0.00	128.90	1,126.69	883.02	3.50	0.00	3.50
May	1,023.52	16.38	112.49	0.00	128.86	1,152.38	892.43	3.89	0.00	3.89
June	1,020.15	15.85	102.58	0.00	118.43	1,138.59	875.26	4.04	0.00	4.04
July	1,098.89	16.50	89.51	0.00	106.01	1,204.90	901.78	3.69	0.00	3.69
August	1,096.21	21.50	109.61	0.00	131.11	1,227.32	923.13	2.74	0.00	2.74
September	1,045.51	16.50	105.90	0.00	122.40	1,167.91	905.39	3.72	0.00	3.72
October	1,103.49	20.23	109.88	0.00	130.11	1,233.59	934.54	3.10	0.00	3.10
November	1,067.34	18.12	116.07	0.00	134.18	1,201.52	937.68	3.42	0.00	3.42
December	1,059.00	18.67	107.66	1.82	128.14	1,187.14	882.09	3.32	1.14	4.45
<b>2025*</b>										
January	1,085.14	16.78	124.03	5.81	146.62	1,231.76	956.76	4.62	3.47	8.09

Source: Kenya Power

\*Provisional

**Table 15(c): Consumption of Petroleum Fuels**

								'000 MT
Descriptions/ Period	AGO (Light Diesel Oil)	Jet	Fuel Oil	Motor Spirit	Illuminating Kerosene	IDO (Heavy Diesel Oil)	LPG	Aviation Gasoline
<b>2023</b>								
January	178.96	53.08	29.19	126.65	6.55	0.00	28.46	0.08
February	173.69	51.77	34.30	118.78	6.13	0.00	25.75	0.39
March	195.67	54.41	58.99	131.40	6.06	0.00	28.10	0.10
April	170.15	51.12	33.54	115.88	4.87	0.00	27.99	0.05
May	188.22	55.03	42.43	127.95	5.23	1.32	31.06	0.08
June	187.86	51.93	18.08	121.34	5.37	0.00	25.72	0.10
July	170.77	58.89	17.48	112.64	4.27	0.00	34.62	0.09
August	200.67	61.67	30.68	129.69	4.12	0.00	33.02	0.09
September	186.18	57.76	30.39	117.40	3.65	0.00	31.90	0.09
October	180.67	53.68	32.90	113.99	3.27	0.00	30.22	0.08
November	164.25	51.62	20.22	114.59	2.58	0.00	31.89	0.06
December	166.46	60.14	26.33	127.57	2.52	0.00	31.86	0.09
<b>2024</b>								
January	177.10	60.91	17.38	123.17	3.15	0.00	32.45	0.06
February	178.65	59.99	18.73	114.16	2.83	0.00	28.07	0.11
March	191.86	57.55	14.15	120.07	2.51	0.00	33.66	0.06
April	170.42	59.57	22.64	113.73	3.36	0.00	31.80	0.04
May	182.42	59.80	24.97	117.91	3.22	0.00	36.17	0.08
June	165.78	60.61	13.07	106.84	3.11	0.00	33.30	0.07
July	192.18	64.78	21.63	126.09	3.39	0.00	37.35	0.09
August	195.49	57.84	28.88	128.32	3.44	0.00	38.27	0.07
September	185.08	61.85	17.85	123.68	2.88	0.00	33.83	0.08
October	195.58	62.35	31.74	132.47	3.25	0.00	36.44	0.10
November	180.00	63.64	15.64	121.89	3.21	0.00	36.05	0.19
December	179.04	63.45	23.43	144.36	2.77	0.00	37.49	0.12
<b>2025*</b>								
January	..	..	..	..	..	..	..	..

Source: Ministry of Energy and Petroleum and Energy & Petroleum Regulatory Authority (EPRA)

MT: Denotes Metric Tonnes

\*Provisional

.. Data not available

**Table 15(d): Average Retail Prices for Selected Fuel Products within Nairobi**

	KSh per litre		
Period/Descriptions	Motor Gasoline Premium	Light Diesel Oil (Gasoil)	Illuminating Kerosene
<b>2023</b>			
January	177.30	162.00	145.94
February	177.30	162.00	145.94
March	179.30	162.00	145.94
April	179.30	162.00	145.94
May	182.70	168.40	161.13
June	182.04	167.28	161.48
July	194.68	179.67	169.48
August	194.68	179.67	169.48
September	211.64	200.99	202.61
October	217.36	205.47	205.06
November	217.36	203.47	203.06
December	212.36	201.47	199.05
<b>2024</b>			
January	207.36	196.47	194.23
February	206.36	195.47	193.23
March	199.15	190.38	188.74
April	193.84	180.38	170.06
May	192.84	179.18	168.76
June	189.84	173.10	163.05
July	188.84	171.60	161.75
August	188.84	171.60	161.75
September	188.84	171.60	158.32
October	180.66	168.06	151.39
November	180.66	168.06	151.39
December	176.29	165.06	148.39
<b>2025</b>			
January	176.58	167.06	151.39

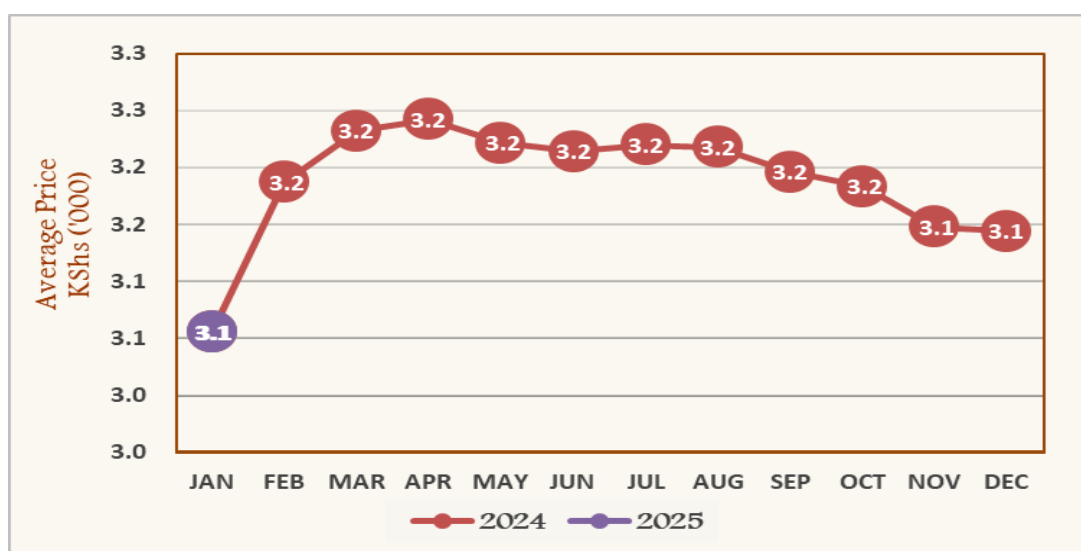
Source: Ministry of Energy and Petroleum and Energy & Petroleum Regulatory Authority (EPRA)

**Table 15(e): Average Retail Prices for Selected Fuels in Kenya (National Average Retail Prices)**

Descriptions/ Period	KSh				
	Motor Gasoline Premium (KSh per Litre)	Light Diesel Oil (KSh per Litre)	Illuminating Kerosene (KSh per Litre)	L.P.G (KSh per 13 Kg)	Charcoal (KSh per Kg )
<b>2023</b>					
January	178.05	162.91	146.86	2,961.93	68.11
February	178.05	162.91	146.86	3,101.94	68.43
March	180.05	162.91	146.86	3,137.70	69.50
April	180.05	162.91	146.86	3,135.39	70.01
May	183.29	169.10	161.83	3,125.40	70.47
June	182.63	167.98	162.19	3,069.01	71.03
July	195.32	180.42	170.25	2,787.83	70.95
August	195.32	180.42	170.25	2,709.07	70.73
September	212.25	201.73	203.34	2,795.69	71.66
October	217.97	206.21	205.79	3,000.04	72.56
November	217.97	204.21	203.79	3,031.82	73.83
December	212.97	202.21	199.78	3,032.62	75.65
<b>2024</b>					
January	207.97	197.21	194.96	3,055.51	76.89
February	206.97	196.21	193.96	3,187.10	77.46
March	199.77	191.11	189.48	3,231.84	78.64
April	194.46	181.11	171.18	3,242.11	79.50
May	193.46	179.91	169.52	3,221.29	82.32
June	190.46	173.83	163.82	3,213.97	83.80
July	189.46	172.33	162.52	3,219.58	84.41
August	189.46	172.33	162.52	3,217.85	84.17
September	189.46	172.33	159.10	3,196.04	85.32
October	181.33	168.82	152.18	3,183.29	85.26
November	181.33	168.82	152.18	3,147.66	85.29
December	176.96	165.82	149.18	3,143.85	85.66
<b>2025</b>					
January	177.25	167.84	152.18	3,122.16	86.22

Source: Ministry of Energy and Petroleum and Energy & Petroleum Regulatory Authority (EPRA)

**Figure 8: Average Prices for Liquefied Petroleum Gas in Kenya per 13 Kg cylinder**





**Table 15(f): OPEC Reference basket Prices**

Period	US\$/ BBL					
	2020	2021	2022	2023	2024	2025
January	66.09	54.38	85.41	81.62	80.04	79.38
February	55.53	61.05	93.95	81.88	81.23	
March	33.92	64.56	113.48	78.45	84.22	
April	17.66	63.24	105.64	84.13	89.12	
May	25.17	66.91	113.87	75.82	83.59	
June	37.05	71.89	117.72	75.19	83.22	
July	43.42	73.53	108.55	81.06	84.43	
August	45.19	70.33	101.90	87.33	78.41	
September	41.54	73.88	95.32	94.60	73.59	
October	40.08	82.11	93.62	91.78	74.45	
November	42.61	80.37	89.73	84.92	72.98	
December	49.17	74.38	79.61	79.00	73.07	

Source: Monthly Oil Market report OPEC

US\$/ BBL: US Dollar per Barrel

\* As from Feb 2020 all prices published will refer to the OPEC reference basket prices

\* As from Feb 2020 all prices published are crude spot prices on the 20th of the reference month

\*As of 6 March 2020: The basket price excludes the Ecuadorean crude "Oriente".

\*As of January 2022: The basket price includes Iraqi Basrah Medium instead of Basrah Light.

\*As of January 2024: The basket price excludes the Angolan crude "Girassol".

**Table 16: Value of Building Plans Approved for Nairobi City County**

Descriptions/ Period	KSh Million					
	Actual Value of Buildings			Real *		
	Residential	Non Residential	Total	Residential	Non Residential	Total
<b>2024</b>						
January	11,620.65	2,400.55	<b>14,021.19</b>	10,333.14	2,134.58	<b>12,467.72</b>
February	12,606.70	3,627.33	<b>16,234.02</b>	11,209.94	3,225.44	<b>14,435.38</b>
March	11,579.64	2,035.64	<b>13,615.28</b>	10,296.68	1,810.10	<b>12,106.78</b>
April	13,839.46	2,557.49	<b>16,396.95</b>	12,306.12	2,274.14	<b>14,580.26</b>
May	20,004.87	3,365.90	<b>23,370.77</b>	17,168.61	2,888.68	<b>20,057.29</b>
June	25,262.26	4,016.59	<b>29,278.85</b>	21,680.62	3,447.12	<b>25,127.74</b>
July	12,162.57	5,232.25	<b>17,394.81</b>	10,815.02	4,652.54	<b>15,467.56</b>
August	15,747.61	2,456.56	<b>18,204.16</b>	14,002.85	2,184.38	<b>16,187.23</b>
September	25,052.97	2,221.35	<b>27,274.32</b>	22,277.23	1,975.24	<b>24,252.47</b>
October	7,267.67	3,332.34	<b>10,600.01</b>	6,462.45	2,963.14	<b>9,425.59</b>
November	8,905.16	2,214.10	<b>11,119.25</b>	7,918.51	1,968.79	<b>9,887.30</b>
December	20,671.97	3,435.16	<b>24,107.12</b>	18,381.62	3,054.56	<b>21,436.18</b>
<b>2025</b>						
January	7,187.34	2,978.68	<b>10,166.03</b>	6,051.48	2,507.94	<b>8,559.42</b>

Source: Nairobi City County

\* Actual deflated by new Construction Input Price Indices beginning June 2021

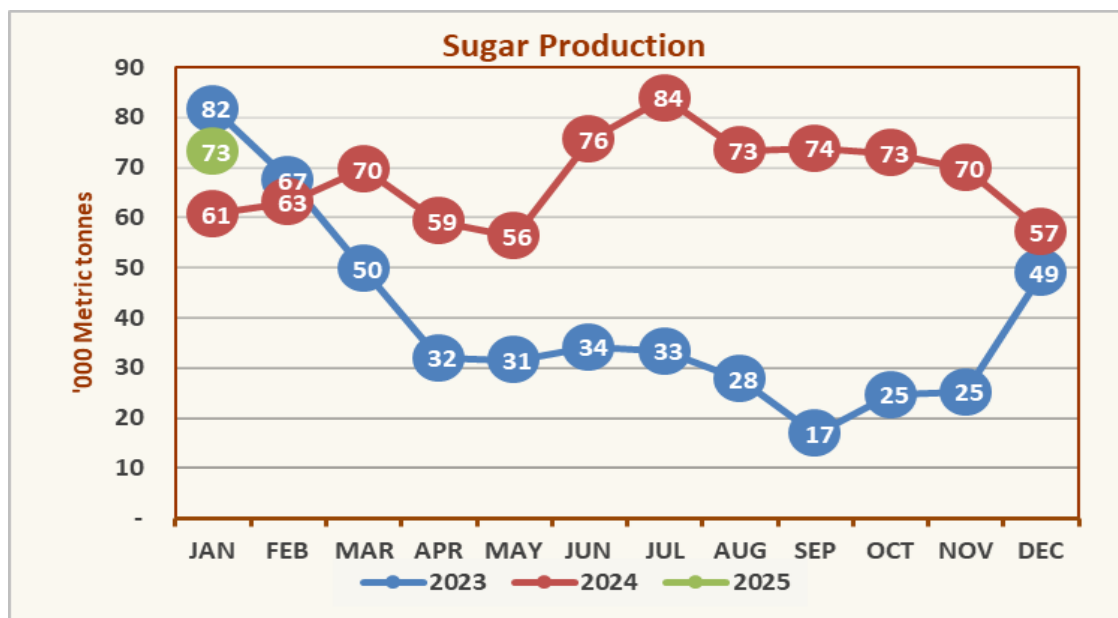
**Table 17(a): Domestic Production of Sugar**

Period	Metric tonnes					
	2020	2021	2022	2023	2024	2025*
January	53,155	58,368	64,839	81,648	60,680	73,201
February	51,083	61,508	64,191	67,486	63,075	
March	52,699	66,326	79,438	49,761	69,657	
April	45,468	58,444	68,483	31,971	59,263	
May	46,350	57,651	63,209	31,495	56,271	
June	49,680	59,226	70,376	34,072	75,500	
July	53,155	57,276	70,278	33,246	83,849	
August	53,434	64,244	46,460	27,680	73,386	
September	54,873	45,348	61,477	16,760	73,818	
October	54,830	49,869	76,533	24,597	72,908	
November	50,227	59,467	67,990	25,179	69,895	
December	38,834	62,514	63,279	48,877	57,152	
<b>Total</b>	<b>603,788</b>	<b>700,241</b>	<b>796,554</b>	<b>472,773</b>	<b>815,454</b>	<b>73,201</b>

Source: Kenya Sugar Board

\* Provisional

**Figure 9: Sugar Production**



**Table 17(b): Production of Soft Drinks**

						'000 Litres
Period	2020	2021	2022	2023	2024	2025*
January	52,654	50,153	46,537	52,601	47,053	58,863
February	42,072	42,749	44,407	47,725	43,440	
March	52,109	53,157	61,898	56,068	56,569	
April	35,951	43,742	45,868	40,193	53,876	
May	34,129	38,327	44,289	42,379	60,057	
June	47,273	46,518	45,640	41,736	40,365	
July	39,833	33,864	35,855	33,155	40,728	
August	39,290	42,744	38,842	38,047	64,534	
September	52,436	53,923	50,841	58,002	60,570	
October	47,215	52,394	50,393	50,205	65,333	
November	42,916	55,226	52,323	51,948	60,512	
December	64,707	57,993	62,609	68,483	78,056	
<b>Total</b>	<b>550,585</b>	<b>570,792</b>	<b>579,502</b>	<b>580,542</b>	<b>671,093</b>	<b>58,863</b>

\* provisional

**Table 17(c): Production of Assembled Vehicles**

						Numbers
Period	2020	2021	2022	2023	2024	2025*
January	614	560	925	1,135	844	921
February	861	565	1,263	980	1,054	
March	830	705	1,245	1,214	1,107	
April	669	737	1,348	972	778	
May	659	609	1,483	1,258	918	
June	415	576	1,186	1,123	1,077	
July	735	798	1,246	832	1,194	
August	595	962	1,036	1,181	1,007	
September	591	1,173	1,320	1,262	1,061	
October	676	1,138	1,004	1,049	978	
November	533	968	798	1,387	826	
December	547	1,198	619	1,134	711	
<b>Total</b>	<b>7,725</b>	<b>9,989</b>	<b>13,473</b>	<b>13,527</b>	<b>11,555</b>	<b>921</b>

\* Provisional

**Table 17(d): Production of Galvanized Sheets**

Metric Tonnes						
Period	2020	2021	2022	2023	2024	2025*
January	23,397	18,631	21,546	17,350	21,544	22,586
February	21,989	20,762	21,671	22,457	23,112	
March	18,527	21,781	19,616	22,373	23,801	
April	6,259	21,572	19,479	21,404	25,185	
May	18,042	21,165	23,383	23,555	21,653	
June	23,730	22,365	22,073	21,100	22,527	
July	24,493	20,432	20,895	24,337	21,939	
August	23,226	19,744	17,064	23,943	25,230	
September	20,801	17,581	21,833	23,443	22,773	
October	22,868	20,111	19,951	24,178	24,905	
November	23,268	25,926	20,589	23,847	24,134	
December	20,854	20,348	18,076	24,555	24,479	
<b>Total</b>	<b>247,455</b>	<b>250,418</b>	<b>246,178</b>	<b>272,541</b>	<b>281,283</b>	<b>22,586</b>

\* Provisional

**Table 17(e): Cement Production and Consumption**

Metric Tonnes								
Descriptions/ Period	2022		2023		2024		2025*	
	Production	Consumption	Production	Consumption	Production	Consumption	Production	Consumption
January	855,883	845,087	785,773	746,930	672,899	631,803	813,602	801,588
February	818,496	798,007	724,164	696,436	713,472	655,255		
March	911,250	877,874	820,772	790,844	708,989	655,818		
April	842,239	819,889	745,106	718,119	688,163	653,522		
May	752,698	717,566	786,702	745,702	660,026	632,906		
June	773,153	745,289	794,700	763,758	692,240	670,641		
July	804,401	778,142	844,237	803,562	733,331	719,921		
August	745,559	717,267	872,135	833,772	790,613	773,711		
September	829,930	799,592	834,651	802,414	743,098	727,659		
October	824,474	800,673	836,384	789,900	820,642	806,610		
November	821,768	797,912	813,372	786,042	801,730	791,337		
December	811,582	752,852	758,055	724,307	756,141	752,267		
<b>TOTAL</b>	<b>9,791,430</b>	<b>9,450,150</b>	<b>9,616,045</b>	<b>9,201,788</b>	<b>8,781,341</b>	<b>8,471,451</b>	<b>813,602</b>	<b>801,588</b>

\*Provisional

**Table 17(f): Milk Intakes in the Formal Sector**

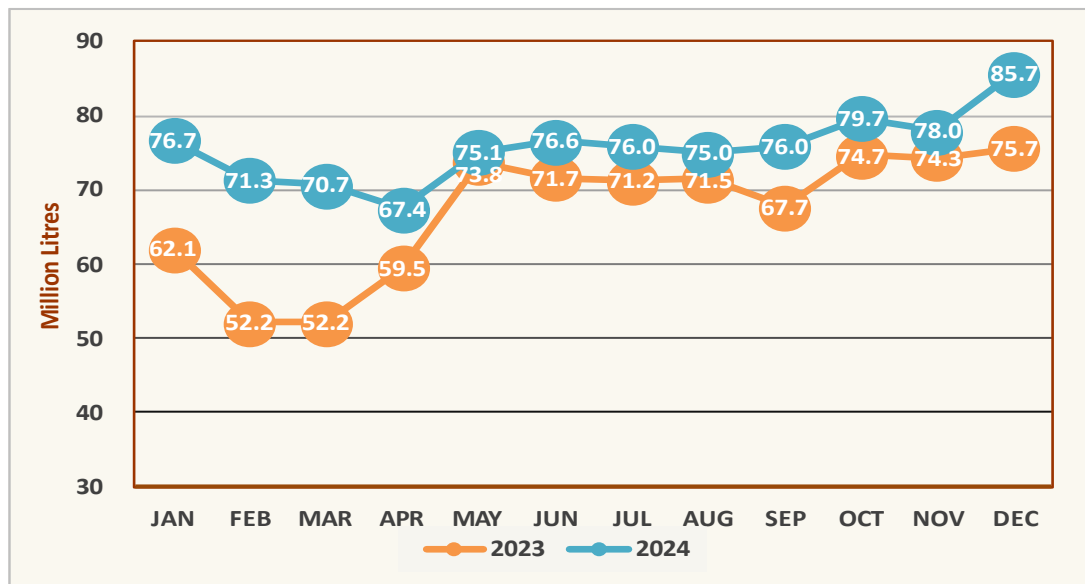
Period	Million Litres					
	2020	2021	2022	2023	2024	2025*
January	63.39	63.80	69.36	62.60	76.74	..
February	53.88	64.62	66.42	53.18	71.32	
March	56.09	62.79	61.76	53.78	70.74	
April	54.78	59.05	61.78	59.82	67.43	
May	42.51	77.33	64.29	71.70	75.10	
June	53.24	74.07	65.69	66.10	76.62	
July	54.31	69.49	61.23	73.66	75.99	
August	59.31	67.75	59.12	73.79	75.05	
September	58.04	72.04	66.62	70.45	75.99	
October	59.71	66.59	60.51	75.62	79.72	
November	60.58	65.22	58.31	74.38	78.01	
December	67.86	64.89	59.27	75.69	85.70	
<b>Total</b>	<b>683.70</b>	<b>807.64</b>	<b>754.35</b>	<b>810.76</b>	<b>908.41</b>	<b>..</b>

Source: Kenya Dairy Board

\* Provisional

.. Data not available

**Figure 10: Milk Intake in the Formal Sector**



**Table 18: Visitor Arrivals through JKIA and MIA**

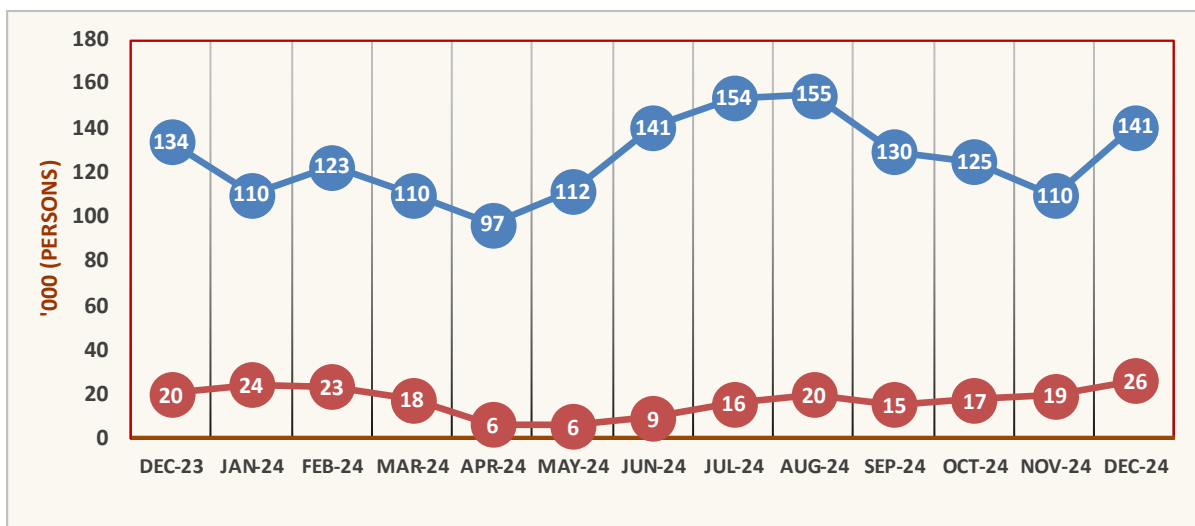
Descriptions/ Period	AIRPORT		Numbers <sup>1</sup>
	JKIA	MIA	Total
<b>2023</b>			
January	112,927	15,845	<b>128,772</b>
February	107,998	15,062	<b>123,060</b>
March	104,799	13,939	<b>118,738</b>
April	92,492	7,571	<b>100,063</b>
May	101,105	5,760	<b>106,865</b>
June	133,509	8,081	<b>141,590</b>
July	155,758	12,607	<b>168,365</b>
August	155,359	16,701	<b>172,060</b>
September	133,400	12,277	<b>145,677</b>
October	128,399	13,843	<b>142,242</b>
November	118,424	15,182	<b>133,606</b>
December	134,226	20,057	<b>154,283</b>
<b>2024</b>			
January	110,186	24,479	<b>134,665</b>
February	123,046	23,396	<b>146,442</b>
March	110,323	17,734	<b>128,057</b>
April	96,949	6,413	<b>103,362</b>
May	111,925	5,714	<b>117,639</b>
June	140,617	9,305	<b>149,922</b>
July	153,961	15,761	<b>169,722</b>
August	155,291	19,822	<b>175,113</b>
September	129,625	15,371	<b>144,996</b>
October	124,986	17,430	<b>142,416</b>
November	109,933	19,402	<b>129,335</b>
December	140,994	25,967	<b>166,961</b>
<b>2025*</b>			
January	..	..	..

<sup>1</sup> Visitor arrivals exclude Kenyans

\* Provisional

.. Data not available

**Figure 11: Visitor Arrivals through JKIA and MIA**



**Table 19(a): Jomo Kenyatta international Airport-Embarked Passengers by Port of Destination**

Ports/Period	2024												Numbers
	Jan	Feb	Mar	Apr	May	Jun	Jul	Aug	Sep	Oct	Nov	Dec	2025*
Amsterdam	16,022	15,513	15,617	14,089	13,392	13,770	13,939	17,459	15,656	15,097	13,172	14,185	16,313
Frankfurt	7,598	6,847	6,948	6,198	4,942	5,306	5,423	5,802	4,682	4,688	6,178	5,935	6,740
London	23,547	20,820	19,736	15,127	14,021	14,409	17,049	17,274	16,427	15,696	14,288	13,993	16,845
Paris	13,438	13,130	13,571	12,911	15,077	13,930	20,988	23,303	20,636	17,212	16,807	15,160	19,976
Istanbul	7,129	6,332	6,143	5,578	4,650	5,067	6,060	7,124	6,361	5,587	4,689	4,469	5,981
Brussels	0	0	0	0	0	5,638	6,750	8,113	6,098	4,886	3,658	3,757	3,662
Other Europe	14	35	379	25	5	362	22	45	45	0	3	131	105
<b>Total Europe</b>	<b>67,748</b>	<b>62,677</b>	<b>62,394</b>	<b>53,928</b>	<b>52,087</b>	<b>58,482</b>	<b>70,231</b>	<b>79,120</b>	<b>69,905</b>	<b>63,166</b>	<b>58,795</b>	<b>57,630</b>	<b>69,622</b>
New York	7,018	4,827	4,706	5,758	6,457	7,427	9,716	9,923	8,455	6,552	5,763	6,574	6,877
Other North America	5	0	0	0	0	0	0	0	0	2	3	0	0
<b>Total North America</b>	<b>7,023</b>	<b>4,827</b>	<b>4,706</b>	<b>5,758</b>	<b>6,457</b>	<b>7,427</b>	<b>9,716</b>	<b>9,923</b>	<b>8,455</b>	<b>6,554</b>	<b>5,766</b>	<b>6,574</b>	<b>6,877</b>
Dubai	24,564	23,354	23,410	19,725	18,776	23,116	28,006	31,962	28,491	24,988	22,397	25,081	25,979
Jeddah	4,672	3,998	5,387	2,986	3,431	3,855	5,007	5,739	4,342	5,299	6,512	7,425	7,411
Other Middle East	23,769	23,102	24,092	21,589	24,103	23,834	25,526	27,817	25,158	24,976	23,355	24,689	27,839
<b>Total Middle East</b>	<b>53,005</b>	<b>50,454</b>	<b>52,889</b>	<b>44,300</b>	<b>46,310</b>	<b>50,805</b>	<b>58,539</b>	<b>65,518</b>	<b>57,991</b>	<b>55,263</b>	<b>52,264</b>	<b>57,195</b>	<b>61,229</b>
Mumbai	10,488	8,845	9,330	9,036	9,659	12,888	13,164	12,598	11,305	11,279	11,113	12,872	11,521
Bangkok	3,874	1,977	3,054	4,412	3,309	3,402	4,203	4,729	4,216	3,556	2,989	3,969	2,832
Other Far East	5,274	5,026	4,955	4,379	5,055	5,604	7,495	8,069	5,662	5,741	5,825	8,385	8,430
<b>Total Far East</b>	<b>19,636</b>	<b>15,848</b>	<b>17,339</b>	<b>17,827</b>	<b>18,023</b>	<b>21,894</b>	<b>24,862</b>	<b>25,396</b>	<b>21,183</b>	<b>20,576</b>	<b>19,927</b>	<b>25,226</b>	<b>22,783</b>
Addis Ababa	15,721	15,519	15,493	15,894	17,034	16,831	16,226	19,936	17,371	17,669	17,074	16,008	16,638
Bujumbura	1,986	2,025	2,334	1,925	2,375	2,422	2,790	2,526	2,110	2,168	2,336	2,890	1,875
Dar-es-salaam	9,100	9,949	9,433	10,015	10,763	11,335	13,253	12,708	11,374	12,198	11,905	13,177	10,227
Entebbe	14,353	12,463	13,230	14,142	16,363	16,089	14,980	15,067	14,129	14,344	15,113	17,138	14,316
Kigali	9,648	8,623	9,770	9,086	9,910	9,611	12,002	13,798	12,416	10,377	10,684	11,864	10,923
Kinshasa	2,826	2,134	2,780	2,850	2,097	2,185	2,793	3,866	3,114	2,799	3,121	2,142	2,740
Other East & Central Africa	18,360	17,775	16,414	17,742	20,816	22,737	24,216	24,800	22,062	21,459	19,608	19,705	20,606
<b>Total East &amp; Central Africa</b>	<b>71,994</b>	<b>68,488</b>	<b>69,454</b>	<b>71,654</b>	<b>79,358</b>	<b>81,210</b>	<b>86,260</b>	<b>92,701</b>	<b>82,576</b>	<b>81,014</b>	<b>79,841</b>	<b>82,924</b>	<b>77,325</b>
Mauritius	0	0	0	0	0	0	0	0	0	0	0	0	0
Seychelles	1,139	1,104	1,444	1,282	1,201	1,342	1,670	1,408	1,462	1,698	1,238	1,311	1,310
Zanzibar	6,218	6,420	5,146	3,613	4,157	7,689	8,551	8,812	7,333	7,421	5,374	8,197	0
Other Indian Ocean Islands	5,809	4,204	6,164	4,563	5,823	6,082	6,946	5,808	4,599	5,128	4,967	3,957	7,124
<b>Total Indian Ocean Islands</b>	<b>13,166</b>	<b>11,728</b>	<b>12,754</b>	<b>9,458</b>	<b>11,181</b>	<b>15,113</b>	<b>17,167</b>	<b>16,028</b>	<b>13,394</b>	<b>14,247</b>	<b>11,579</b>	<b>13,465</b>	<b>8,434</b>
Abidjan	2,045	1,312	1,580	1,352	1,976	1,966	1,726	1,879	1,714	1,735	1,649	1,277	1,135
Douala	783	678	412	326	378	0	150	735	1,014	910	893	1,108	620
Lagos	4,158	3,444	3,960	4,166	4,163	4,932	4,122	4,356	4,904	4,208	5,385	6,522	4,002
Accra	4,592	3,916	5,006	4,730	4,569	5,011	4,817	4,973	5,172	4,969	5,067	4,860	3,942
Other West Africa	471	496	482	602	681	801	367	618	592	608	651	978	729
<b>Total West Africa</b>	<b>12,049</b>	<b>9,846</b>	<b>11,440</b>	<b>11,176</b>	<b>11,767</b>	<b>12,710</b>	<b>11,182</b>	<b>12,561</b>	<b>13,396</b>	<b>12,430</b>	<b>13,645</b>	<b>14,745</b>	<b>10,428</b>
Johannesburg	16,044	13,071	14,083	13,931	14,156	14,671	17,507	14,665	16,190	16,423	13,997	16,116	15,188
Harare	1,777	1,809	2,100	2,229	1,891	1,857	2,202	1,920	2,079	1,844	2,223	2,104	1,738
Lilongwe	3,163	2,822	3,694	3,283	3,092	4,023	3,894	4,214	3,796	3,346	3,351	3,640	3,070
Lusaka	3,987	3,122	4,114	3,959	4,137	3,917	4,180	4,661	4,412	4,150	4,656	4,716	3,974
Cape Town	1,996	2,023	2,199	1,688	1,650	1,433	1,951	1,898	1,827	2,295	1,900	1,531	1,813
Other South Africa	2,308	2,111	2,177	1,987	1,383	2,064	2,775	2,791	2,803	2,328	2,022	2,090	1,712
<b>Total Southern Africa</b>	<b>29,275</b>	<b>24,958</b>	<b>28,367</b>	<b>27,077</b>	<b>26,309</b>	<b>27,965</b>	<b>32,509</b>	<b>30,149</b>	<b>31,107</b>	<b>30,386</b>	<b>28,149</b>	<b>30,197</b>	<b>27,495</b>
Cairo	3,005	3,319	3,347	2,922	3,115	3,329	3,275	4,323	3,918	3,633	3,353	3,492	3,824
Khartoum	158	117	126	239	133	169	16	214	48	0	0	0	0
Juba	5,698	4,142	3,920	4,326	4,355	3,828	4,242	4,167	3,989	4,334	4,733	3,934	5,434
Other North Africa	0	3	0	35	17	0	0	8	4	2	4	2	16
<b>Total North Africa</b>	<b>8,861</b>	<b>7,581</b>	<b>7,393</b>	<b>7,522</b>	<b>7,620</b>	<b>7,326</b>	<b>7,533</b>	<b>8,712</b>	<b>7,959</b>	<b>7,969</b>	<b>8,090</b>	<b>7,428</b>	<b>9,274</b>
<b>Other International</b>	<b>50</b>	<b>118</b>	<b>157</b>	<b>27</b>	<b>192</b>	<b>172</b>	<b>347</b>	<b>148</b>	<b>86</b>	<b>8</b>	<b>0</b>	<b>40</b>	<b>0</b>
<b>Total International</b>	<b>282,807</b>	<b>256,525</b>	<b>266,893</b>	<b>248,727</b>	<b>259,304</b>	<b>283,104</b>	<b>318,346</b>	<b>340,256</b>	<b>306,052</b>	<b>291,613</b>	<b>278,056</b>	<b>295,424</b>	<b>293,467</b>

Source: Kenya Airports Authority

\*Provisional

**Table 19(b): Jomo Kenyatta international Airport- Landed Passengers by Port of Origin**

Ports/Period	2024												Numbers
	Jan	Feb	Mar	Apr	May	Jun	Jul	Aug	Sep	Oct	Nov	Dec	2025*
Amsterdam	15,842	16,022	14,912	11,755	12,968	16,074	16,432	15,386	15,362	16,954	15,184	17,484	16,042
Frankfurt	6,185	6,008	5,149	4,145	4,185	5,326	5,568	5,119	4,035	4,577	5,786	6,396	5,757
London	19,116	18,522	16,876	11,999	13,289	14,840	17,166	15,660	14,667	16,408	12,941	16,808	14,923
Paris	13,396	12,542	11,542	11,146	13,228	14,337	17,375	15,474	13,125	14,379	12,130	13,223	15,998
Istanbul	6,846	6,203	5,587	4,170	4,112	6,039	6,960	6,740	5,423	5,873	5,122	6,327	5,907
Brussels	0	0	0	0	0	3,811	6,331	6,134	4,892	4,122	1,698	2,183	1,212
Other Europe	184	183	16	33	3	32	513	219	4	27	0	71	12
<b>Total Europe</b>	<b>61,569</b>	<b>59,480</b>	<b>54,082</b>	<b>43,248</b>	<b>47,785</b>	<b>60,459</b>	<b>70,345</b>	<b>64,732</b>	<b>57,508</b>	<b>62,340</b>	<b>52,861</b>	<b>62,492</b>	<b>59,851</b>
New York	5,711	4,356	3,885	4,731	6,411	8,029	8,499	7,884	6,126	5,397	5,303	6,977	5,113
Other North America	0	0	0	0	0	0	0	0	0	0	0	5	5
<b>Total North America</b>	<b>5,711</b>	<b>4,356</b>	<b>3,885</b>	<b>4,731</b>	<b>6,411</b>	<b>8,029</b>	<b>8,499</b>	<b>7,884</b>	<b>6,126</b>	<b>5,401</b>	<b>5,303</b>	<b>6,982</b>	<b>5,118</b>
Dubai	23,313	18,704	19,729	19,658	19,024	26,555	31,166	29,419	22,583	22,677	21,173	27,280	21,628
Jeddah	5,312	3,026	2,287	4,801	3,425	3,897	5,944	5,449	4,356	5,148	6,582	7,798	6,354
Other Middle East	21,058	20,033	20,377	22,009	22,393	26,468	26,674	26,243	23,219	22,824	21,522	26,775	24,713
<b>Total Middle East</b>	<b>49,683</b>	<b>41,763</b>	<b>42,393</b>	<b>46,468</b>	<b>44,842</b>	<b>56,920</b>	<b>63,784</b>	<b>61,111</b>	<b>50,158</b>	<b>50,649</b>	<b>49,277</b>	<b>61,853</b>	<b>52,695</b>
Mumbai	12,377	9,747	9,401	11,026	11,991	11,840	12,635	12,881	10,573	8,921	8,177	10,661	12,438
Bangkok	3,660	2,007	3,356	4,024	4,857	4,177	4,756	4,340	3,772	3,474	3,058	3,739	2,776
Other Far East	5,361	4,753	5,398	4,847	5,941	5,563	7,955	8,226	5,393	5,115	5,527	8,291	8,687
<b>Total Far East</b>	<b>21,398</b>	<b>16,507</b>	<b>18,155</b>	<b>19,897</b>	<b>22,789</b>	<b>21,580</b>	<b>25,346</b>	<b>25,447</b>	<b>19,738</b>	<b>17,510</b>	<b>16,762</b>	<b>22,691</b>	<b>23,901</b>
Addis Ababa	14,666	17,523	16,539	15,699	16,758	18,080	18,814	19,386	16,238	17,333	18,606	20,151	15,472
Bujumbura	2,335	2,111	2,371	2,107	2,429	2,337	2,850	2,945	2,622	2,319	2,564	2,753	1,909
Dar-es-alaam	9,641	9,566	9,456	10,096	9,490	10,069	11,200	13,298	10,956	11,486	10,969	12,818	10,591
Entebbe	14,686	14,652	15,611	14,258	15,352	15,722	16,527	17,412	16,035	16,116	16,470	17,958	15,537
Kigali	8,465	8,124	8,964	8,985	9,555	12,621	11,170	13,408	11,243	10,247	10,272	13,789	10,172
Kinshasa	2,128	2,271	2,863	3,157	1,750	2,398	3,144	3,332	2,860	3,057	2,752	3,245	1,504
Other East & Central Africa	16,585	18,905	17,830	16,523	19,039	20,349	22,864	24,189	19,119	18,520	17,110	18,478	14,974
<b>Total East &amp; Central Africa</b>	<b>68,506</b>	<b>73,152</b>	<b>73,634</b>	<b>70,825</b>	<b>74,373</b>	<b>81,576</b>	<b>86,569</b>	<b>93,970</b>	<b>79,073</b>	<b>79,078</b>	<b>78,743</b>	<b>89,192</b>	<b>70,159</b>
Mauritius	0	0	0	0	0	0	0	0	2,876	2,768	2,580	2,952	2,106
Seychelles	1,129	989	1,180	1,499	1,319	1,244	1,162	1,215	901	1,379	1,275	1,358	1,181
Zanzibar	8,704	9,577	7,746	4,555	4,964	8,380	11,664	13,777	10,365	11,586	8,641	8,196	7,731
Other Indian Ocean Islands	5,166	4,905	4,792	5,141	5,836	5,127	11,476	13,702	11,610	9,361	8,065	7,645	9,650
<b>Total Indian Ocean Islands</b>	<b>14,999</b>	<b>15,471</b>	<b>13,718</b>	<b>11,195</b>	<b>12,119</b>	<b>14,751</b>	<b>24,302</b>	<b>28,694</b>	<b>25,752</b>	<b>25,094</b>	<b>20,561</b>	<b>20,151</b>	<b>20,668</b>
Abidjan	1,368	1,696	1,458	1,344	1,966	1,553	1,720	1,788	1,806	1,698	1,590	1,398	1,100
Douala	1,079	896	483	407	806	732	912	920	1,261	1,317	1,188	889	999
Lagos	4,807	3,747	3,929	4,098	4,191	4,558	4,510	3,998	4,641	4,225	4,772	4,603	4,602
Accra	4,551	4,327	4,874	4,769	4,837	5,098	5,501	5,294	5,388	4,908	5,241	4,406	4,095
Other West Africa	349	608	485	373	815	560	613	609	800	655	691	793	469
<b>Total West Africa</b>	<b>12,154</b>	<b>11,274</b>	<b>11,229</b>	<b>10,991</b>	<b>12,615</b>	<b>12,501</b>	<b>13,256</b>	<b>12,609</b>	<b>13,896</b>	<b>12,803</b>	<b>13,482</b>	<b>12,089</b>	<b>11,265</b>
Johannesburg	13,790	12,667	13,840	14,181	14,646	17,900	13,559	15,584	16,352	13,380	14,733	19,557	11,518
Harare	2,736	2,616	2,696	3,228	3,259	3,110	2,792	3,573	3,109	3,263	3,157	3,363	2,939
Lilongwe	1,162	874	1,284	1,594	1,320	1,992	1,880	3,125	3,551	2,135	1,743	2,578	1,418
Lusaka	2,758	2,356	2,814	3,385	2,908	2,875	2,850	3,093	2,979	3,083	3,694	4,307	2,195
Cape Town	1,755	1,911	2,060	1,578	1,652	1,976	1,175	2,235	1,716	1,914	1,903	1,673	1,820
Other South Africa	4,302	3,611	4,108	4,149	4,443	4,590	4,622	4,151	2,162	3,642	3,587	5,182	4,211
<b>Total Southern Africa</b>	<b>26,503</b>	<b>24,035</b>	<b>26,802</b>	<b>28,115</b>	<b>28,228</b>	<b>32,443</b>	<b>26,878</b>	<b>31,761</b>	<b>29,869</b>	<b>27,417</b>	<b>28,817</b>	<b>36,660</b>	<b>24,101</b>
Cairo	3,707	3,307	2,742	3,259	3,982	4,004	4,067	4,158	3,898	4,070	3,868	4,179	3,877
Khartoum	121	237	186	193	217	221	0	140	36	0	0	0	0
Juba	4,600	4,113	4,772	4,569	4,457	4,221	4,077	4,760	3,837	4,623	4,509	5,802	3,685
Other North Africa	2	8	0	12	19	3	0	10	2	2	3	12	10
<b>Total North Africa</b>	<b>8,430</b>	<b>7,665</b>	<b>7,700</b>	<b>8,033</b>	<b>8,675</b>	<b>8,449</b>	<b>8,144</b>	<b>9,068</b>	<b>7,773</b>	<b>8,695</b>	<b>8,380</b>	<b>9,993</b>	<b>7,572</b>
<b>Other International</b>	<b>50</b>	<b>14</b>	<b>18</b>	<b>29</b>	<b>39</b>	<b>99</b>	<b>378</b>	<b>187</b>	<b>74</b>	<b>39</b>	<b>37</b>	<b>51</b>	<b>0</b>
<b>Total International</b>	<b>269,003</b>	<b>253,717</b>	<b>251,616</b>	<b>243,532</b>	<b>257,876</b>	<b>296,807</b>	<b>327,501</b>	<b>335,463</b>	<b>289,967</b>	<b>289,026</b>	<b>274,223</b>	<b>322,154</b>	<b>275,330</b>

Source: Kenya Airports Authority

\*Provisional



**Table 19(c): New Registration of Road Motor Vehicles and Motorcycles by Type**

Body Type/Period	2024												Numbers
	2024												2025*
	Jan	Feb	Mar	Apr	May	Jun	Jul	Aug	Sep	Oct	Nov	Dec	Jan
Saloons	720	515	478	276	421	358	442	290	520	426	307	614	..
Station Wagons	8,446	5,957	5,909	3,320	4,845	4,142	4,952	3,453	6,171	5,226	4,336	7,447	..
Vans	358	304	396	163	184	164	217	272	252	203	226	275	..
Pick Ups	320	320	267	202	304	237	345	80	186	230	197	177	..
Mini Buses	165	196	145	46	109	96	111	57	161	112	122	121	..
Buses	102	130	170	80	136	97	124	79	171	117	100	146	..
Lorries	499	682	652	407	373	356	391	296	501	412	475	412	..
Trailers	127	336	359	213	55	-	-	-	229	354	204	246	..
Motor Cycles	8,468	8,561	6,509	4,772	3,787	6,683	6,060	4,292	5,013	4,671	4,897	5,091	..
Three Wheelers	1	647	445	322	167	280	328	398	433	237	495	311	..
Wheeled Tractors	67	84	84	50	48	41	29	36	46	46	51	85	..
Others	438	777	570	395	464	481	500	635	704	766	665	662	..
<b>Totals</b>	<b>19,711</b>	<b>18,509</b>	<b>15,984</b>	<b>10,246</b>	<b>10,893</b>	<b>12,935</b>	<b>13,499</b>	<b>9,888</b>	<b>14,387</b>	<b>12,800</b>	<b>12,075</b>	<b>15,587</b>	<b>..</b>

Source: National Transport and Safety Authority

\* Provisional

\_ No Data

.. Data not available

**Table 19(d): Passenger and Cargo Movement on the Standard Gauge Railway**

Descriptions/ Period	PASSENGER				FREIGHT			
	2024		2025*		2024		2025*	
	No. Passengers	Revenue (KSh)	No. Passengers	Revenue (KSh)	Tonnage	Revenue (KSh) <sup>1</sup>	Tonnage	Revenue (KSh) <sup>1</sup>
January	192,376	312,443,190	..	..	511,240	1,287,415,699	..	..
February	158,652	270,396,935	..	..	342,867	981,146,545	..	..
March	180,645	297,978,910	..	..	449,200	976,099,344	..	..
April	241,664	385,335,205	..	..	565,312	1,178,827,369	..	..
May	168,525	279,275,780	..	..	615,636	1,273,798,341	..	..
June	186,920	306,995,535	..	..	562,376	1,007,356,946	..	..
July	192,768	319,120,339	..	..	625,419	1,273,012,684	..	..
August	281,683	440,588,930	..	..	582,389	1,174,986,643	..	..
September	175,901	296,449,919	..	..	512,537	1,178,025,854	..	..
October	197,738	347,105,655	..	..	593,696	1,151,900,202	..	..
November	218,192	389,794,345	..	..	600,736	1,230,383,553	..	..
December	251,920	452,997,302	..	..	569,525	1,261,268,286	..	..
<b>TOTAL</b>	<b>2,446,984</b>	<b>4,098,482,045</b>	<b>..</b>	<b>..</b>	<b>6,530,935</b>	<b>13,974,221,465</b>	<b>..</b>	<b>..</b>

Source: Kenya Railways Corporation

<sup>1</sup> Excludes deductions from discounts offered to customers

\*Provisional

.. Data not available

**Table 19(e): Metre Gauge Railway (MGR) passenger and revenue**

Passenger/ Number	2024												2025*
	Jan	Feb	Mar	Apr	May	Jun	Jul	Aug	Sep	Oct	Nov	Dec	Jan
Nairobi - Kahawa	11,362	14,156	13,585	9,503	0	0	3,836	9,961	10,875	11,016	11,561	8,714	..
Nairobi - Ruiru	59,825	67,627	58,203	40,495	22,529	47,883	51,357	55,528	58,428	52,279	51,232	32,585	..
Nairobi - Embakasi	43,680	48,704	51,462	38,807	42,370	38,713	44,025	45,754	47,243	46,038	39,853	26,443	..
Nairobi - Kikuyu - Limuru	27,839	31,509	29,226	18,723	3,922	21,528	27,541	28,364	29,998	29,738	24,267	16,538	..
Nairobi - Athi River - Lukenya	7,913	10,182	9,520	7,465	8,379	8,466	9,716	10,201	9,695	10,845	9,677	6,784	..
Nairobi - Syokimau	5,772	7,179	9,328	5,327	6,762	8,119	14,040	7,079	2,639	2,358	2,217	1,663	..
SGR Link	38,193	31,387	36,831	42,568	33,506	35,473	36,904	47,126	33,120	31,507	30,559	31,621	..
DMU Nairobi- Syokimau	667	0	828	831	0	0	0	2,661	7,124	6,258	5,902	5,199	..
DMU Nairobi- Embakasi	5,952	7,727	10,466	7,469	8,007	8,559	12,244	12,276	11,513	9,742	9,838	7,816	..
BRT	14,466	16,586	16,255	15,185	15,365	13,591	16,662	16,466	18,494	17,400	16,425	9,577	..
Nanyuki Train	11,958	3,425	4,695	2,266	0	0	1,067	4,610	2,555	2,339	3,499	10,168	..
Kisumu Train	13,798	2,141	2,577	2,664	0	0	0	0	0	0	0	8,979	..
Special Train	0	0	0	0	0	0	0	0	0	0	0	0	..
<b>Total</b>	<b>241,425</b>	<b>240,623</b>	<b>242,976</b>	<b>191,303</b>	<b>140,840</b>	<b>182,332</b>	<b>217,392</b>	<b>240,026</b>	<b>231,684</b>	<b>219,520</b>	<b>205,030</b>	<b>166,087</b>	<b>..</b>
<b>Passenger Revenue (KSh)</b>													
Nairobi - Kahawa	455,560	568,125	541,855	381,780	0	0	153,690	394,500	434,765	440,200	462,235	346,815	..
Nairobi - Ruiru	3,166,050	3,592,530	3,119,720	2,139,330	1,195,435	2,517,390	2,725,190	2,916,800	3,085,015	3,050,030	2,727,425	1,742,605	..
Nairobi - Embakasi	2,175,915	2,428,610	2,561,220	1,950,495	2,113,435	1,932,960	2,198,965	2,296,105	2,361,435	2,290,090	1,995,655	1,322,315	..
Nairobi - Kikuyu - Limuru	1,378,295	1,563,685	1,462,540	949,810	195,900	1,069,135	1,363,435	1,408,505	1,497,830	1,489,770	1,272,500	815,615	..
Nairobi - Athi River - Lukenya	519,995	652,320	597,065	459,425	522,765	544,615	599,880	656,370	598,990	658,830	583,960	413,940	..
Nairobi - Syokimau	321,990	394,340	518,200	281,899	349,545	426,290	796,740	402,300	143,310	123,400	115,770	83,360	..
SGR Link	1,918,090	1,567,750	1,847,375	2,153,260	1,699,650	1,774,770	1,858,850	2,365,470	1,657,430	1,573,570	1,524,280	1,581,475	..
DMU Nairobi- Syokimau	66,700	0	41,430	57,290	0	0	0	197,720	475,980	392,470	376,120	321,440	..
DMU Nairobi- Embakasi	514,240	661,750	797,450	620,350	682,850	690,050	939,700	945,450	932,700	779,050	770,050	589,150	..
BRT	580,560	672,980	649,650	597,945	637,610	565,120	671,615	1,132,745	749,405	701,100	669,210	397,910	..
Nanyuki Train	2,621,700	844,280	1,022,845	490,115	0	0	186,905	950,135	485,525	428,835	704,965	2,189,565	..
Kisumu Train	10,923,506	1,821,325	2,386,900	2,207,650	0	0	0	0	0	0	0	7,450,206	..
Special Train	0	0	0	0	0	0	0	0	0	0	0	213,816	..
<b>Total</b>	<b>24,642,601</b>	<b>14,767,695</b>	<b>15,546,250</b>	<b>12,289,349</b>	<b>7,397,190</b>	<b>9,520,330</b>	<b>11,494,970</b>	<b>13,666,100</b>	<b>12,422,385</b>	<b>11,927,345</b>	<b>11,202,170</b>	<b>17,468,212</b>	<b>..</b>

Source: Kenya Railways

BRT- Bus Rapid Transport

DMU- Diesel Multiple Units

\*Provisional

.. Data not available

**Table 19(f): Monthly Cargo Throughput at the port of Mombasa**

Descriptions/Period	Metric tonnes												2025*
	2024												
	Jan	Feb	Mar	Apr	May	Jun	Jul	Aug	Sep	Oct	Nov	Dec	
<b>Imports</b>													
Dry General-Containerized	859,745	778,341	1,120,269	850,780	994,504	805,711	964,797	860,074	938,799	928,816	995,097	1,079,076	..
Dry General- Conventional	116,387	158,664	107,500	109,939	90,749	217,147	200,563	151,865	199,193	200,181	170,655	345,174	..
Dry Bulk	614,896	284,821	526,545	712,716	733,260	627,939	316,895	651,897	575,298	725,740	682,724	483,075	..
P.O.L <sup>1</sup>	717,460	529,661	587,025	934,506	790,014	778,666	574,419	809,777	784,960	881,101	450,646	790,244	..
Other Bulk Liquids	76,464	126,124	34,453	56,926	43,228	55,068	344,995	75,658	95,500	42,792	179,170	68,570	..
<b>Sub-Total</b>	<b>2,384,952</b>	<b>1,877,610</b>	<b>2,375,792</b>	<b>2,664,867</b>	<b>2,651,755</b>	<b>2,484,531</b>	<b>2,401,669</b>	<b>2,549,270</b>	<b>2,593,749</b>	<b>2,778,629</b>	<b>2,478,292</b>	<b>2,766,138</b>	..
<b>Exports</b>													
Dry General-Containerized	330,123	352,427	471,805	341,717	421,693	348,927	494,885	405,462	401,839	385,477	363,867	389,497	..
Dry General-Conventional	4,625	10,010	2,421	1,667	999	11,155	5,119	1,014	6,929	6,774	4,529	10,176	..
Dry Bulk	10,250	9,000	20,000	15,000	399	54,000	3,729	-	-	5,000	10,000	48,000	..
P.O.L <sup>1</sup>	-	-	-	-	-	-	-	-	-	-	-	-	..
Bunkers	-	-	-	-	785	1,063	423	645	1,238	916	1,242	494	..
Other Bulk Liquids	-	2,300	-	-	-	4,700	-	3,702	-	-	-	-	..
<b>Sub-Total</b>	<b>344,998</b>	<b>373,737</b>	<b>494,226</b>	<b>358,384</b>	<b>423,876</b>	<b>419,845</b>	<b>504,157</b>	<b>410,822</b>	<b>410,006</b>	<b>398,167</b>	<b>379,638</b>	<b>448,167</b>	..
Transshipment	576,215	457,251	457,688	350,602	468,793	454,318	460,211	380,233	493,626	567,431	591,766	573,712	..
Restows	35,564	35,650	8,538	9,007	19,290	10,289	10,361	8,835	14,427	11,149	12,427	11,976	..
<b>Grand Total</b>	<b>3,341,729</b>	<b>2,744,248</b>	<b>3,336,244</b>	<b>3,382,860</b>	<b>3,563,714</b>	<b>3,368,983</b>	<b>3,376,397</b>	<b>3,349,160</b>	<b>3,511,808</b>	<b>3,755,377</b>	<b>3,462,123</b>	<b>3,799,993</b>	..

Source: Kenya Ports Authority

<sup>1</sup> Refers to Petroleum, Oil and Lubricants

- No data

.. Data not available