

LEADING ECONOMIC INDICATORS



Inflation Rate



OCTOBER 2024

Table 1(a): Consumer Price Indices	6
Table 1(b): Inflation Rates	7
Table 2: Mean Monthly Foreign Exchange Rates of Kenyan Shilling against Selected Major Currencies	7
Table 3: Interest rate (%)	9
Table 4: Nairobi Securities Exchange 20 Share Index	10
Table 5(a): Money Supply	11
Table 5(b): Gross Foreign Exchange Reserves	12
Table 6: Coffee Sales and Prices	13
Table 7: Tea Production, Auction Volume and Prices.....	14
Table 8: Cane Deliveries	15
Table 9(a): Average Monthly Retail Prices for Dry Maize, 2023 (per Kg)	16
Table 9(b): Average Monthly Retail Prices for Dry Maize, 2024 (per Kg)	17
Table 9(c): Average Monthly Retail Prices for Dry Beans, 2023 (per Kg)	18
Table 9(d): Average Monthly Retail Prices for Dry Beans, 2024 (per Kg)	19
Table 10: Exports of Coffee and Tea	20
Table 11: Monthly Exports of Fresh Horticultural Produce	20
Table 12: External Trade	21
Table 13(a): Major Destinations of Domestic Exports	21
Table 13(b): Domestic Exports by Broad Economic Category	22
Table 14(a): Major Origins of Imports	22
Table 14(b): Imports by Broad Economic Category	23
Table 14 (c): Mobile Money Transactions	23
Table 14(d): International trade in ICT	24
Table 15(a): Local Electricity Generation by Source	25
Table 15(b): Generation and Consumption of Electricity	26
Table 15(c): Consumption of Petroleum Fuels	27
Table 15(d): Average Retail Prices for Selected Fuel Products within Nairobi	28
Table 15(e): Average Retail Prices for Selected Fuels in Kenya (National Average Retail Prices)	29
Table 15(f): OPEC Reference basket Prices.....	30
Table 16: Value of Building Plans Approved for Nairobi City County	30
Table 17(a): Domestic Production of Sugar	31
Table 17(b): Production of Soft Drinks	32
Table 17(c): Production of Assembled Vehicles	32
Table 17(d): Production of Galvanized Sheets.....	33
Table 17(e): Cement Production and Consumption	33
Table 17(f): Milk Intakes in the Formal Sector.....	34
Table 18: Visitor Arrivals through JKIA and MIA.....	35
Table 19(a): Jomo Kenyatta international Airport-Embarked Passengers by Port of Destination	36
Table 19(b): Jomo Kenyatta international Airport- Landed Passengers by Port of Origin.....	37
Table 19(c): New Registration of Road Motor Vehicles and Motorcycles by Type	38
Table 19(d): Passenger and Cargo Movement on the Standard Gauge Railway	39
Table 19(e): Metre Gauge Railway (MGR) passenger and revenue	39
Table 19(f): Monthly Cargo Throughput at the port of Mombasa	40

Figure 1: Inflation Rates: 2023 - 2024	7
Figure 2: Mean Monthly Foreign Exchange Rates of Kenya Shillings against Selected Major Currencies ...	8
Figure 3: Nairobi Securities Exchange 20 Share Index	10
Figure 4: Coffee Sales at the Nairobi Coffee Exchange	13
Figure 5: Tea Production	14
Figure 6: Cane Deliveries	15
Figure 7: Electricity Generation by Source	25
Figure 8: Average Prices for Liquefied Petroleum Gas in Kenya per 13 Kg cylinder	29
Figure 9: Sugar Production	31
Figure 10: Milk Intake in the Formal Sector	34
Figure 11: Visitor Arrivals through JKIA and MIA	36

List of Acronyms and Abbreviations

AGO	Light diesel oil (Automotive Gas Oil)
BEC	Broad Economic Category
BRT	Bus Rapid Transport
CBK	Central Bank of Kenya
CBR	Central Bank Rate
CPI	Consumer Price Index
DMU	Diesel Multiple Units
FCD	Foreign currency deposits
ICT	Information and Communication Technology
IDO	Heavy diesel oil (Industrial Diesel Oil)
JKIA	Jomo Kenyatta International Airport
KG	Kilograms
KPLC	Kenya Power and Lighting Company
KSh	Kenya Shilling
KWH	Kilo Watt Hour
LPG	Liquefied petroleum gas
M1	Narrow Money supply
M2	Money supplied by CBK, Commercial Banks and Micro Finance Institutions
M3	M2 plus Foreign Currency Holdings by Residents
MGR	Meter Gauge Railway
MIA	Mombasa International Airport
MT	Metric Tonnes
NBFI	Non-Bank Financial Institutions
NFA	Net Foreign Assets
NSE	Nairobi Securities Exchange
OPEC	Organisation of the Petroleum Exporting Countries
POL	Petroleum, Oil and Lubricants
SA Rand	South Africa Rand
SGR	Standard Gauge Railway
TSHS	Tanzania Shilling
UAE	United Arab Emirates
US\$/ BBL	US Dollar per Barrel
USD	United States Dollar
USHS	Uganda Shilling

KEY HIGHLIGHTS

The Monthly Leading Economic Indicators report highlights changes in Consumer Price Indices, inflation rates, interest rates and exchange rates. In addition, the report details changes in selected indicators of international trade, agriculture, energy, manufacturing, construction, tourism and transport.

MACROECONOMIC INDICATORS

The Consumer Price Index (CPI) increased from an index of 140.13 in September 2024 to 140.44 in October 2024, as shown in Table 1(a). The overall year-on-year inflation rate, as measured by the CPI, was 2.7 per cent in October 2024, as presented in Table 1(b).

In October 2024, the Kenyan Shilling appreciated against the Sterling Pound, Euro, Japanese Yen, and Tanzanian Shilling, remained stable against the US Dollar, and depreciated against the South African Rand and Ugandan Shilling, as shown in Table 2. The average yield rate for 91-day Treasury Bills declined from 15.75 per cent in September 2024 to 14.97 per cent in October 2024. The Central Bank of Kenya lowered its benchmark interest rate from 12.75 per cent in September 2024 to 12.00 per cent in October 2024. The interbank rate fell from 12.67 per cent in September 2024 to 12.07 per cent in October 2024. The weighted average lending rate at commercial banks increased from 16.91 per cent to 17.15 per cent, while the weighted average deposit rate decreased from 12.09 per cent to 11.85 per cent during the same period, as detailed in Table 3.

The NSE 20 Share Index rose from 1,776 points in September 2024 to 1,906 points in October 2024. The total number of shares traded increased from 334 million to 382 million, while the number of equity transactions grew from 27,733 to 31,857. However, equity turnover declined from KSh 5.0 billion to KSh 4.9 billion during the same period, as detailed in Table 4.

The money supply (M1) increased from KSh 1.95 trillion in September 2024 to KSh 1.98 trillion in October 2024. In addition, the money supply (M2) rose from KSh 4.65 trillion to KSh 4.68 trillion, during the same period. The money supply (M3) contracted by 0.08 per cent, to KSh 5.99 trillion in October 2024, as shown in Table 5(a). Gross foreign exchange reserves declined from KSh 2.12 trillion in September 2024 to KSh 2.09 trillion in October 2024, while net foreign exchange liabilities decreased from KSh 895.76 billion to KSh 880.12 billion during the same period, as shown in Table 5(b).



The quantity of coffee auctioned at the Nairobi Coffee Exchange decreased from 3.0 thousand metric tonnes (MT) in August 2024 to 2.6 thousand MT in September 2024, while the price rose from USD 4.80 per kilogram (kg) to USD 4.91 per kg during the same period, as shown in Table 6.

Tea production increased from 38.6 thousand MT in August 2024 to 42.4 thousand MT in September 2024. Tea auction volumes declined from 32.6 thousand MT in September 2024 to 22.6 thousand MT in October 2024. However, the average auction price rose from USD 2.07 per kg in September 2024 to USD 2.10 per kg in October 2024. For the first ten months of 2024, the average auction price was USD 2.18 per kg, as shown in Table 7.

Cane deliveries rose from 800.1 thousand MT in September 2024 to 807.9 thousand MT in October 2024, as shown in Table 8. Tables 9(b) and 9(d) present the average retail market prices for one kg of maize and one kg of beans, respectively. The average monthly retail market price of one kg of maize increased from KSh 47.5 in September 2024 to KSh 49.0 in October 2024. In contrast, the average monthly retail market price of one kg of beans decreased from KSh 148.8 to KSh 147.4 during the same period.

The quantity of coffee exported decreased from 5.0 thousand MT in September 2024 to 3.4 thousand MT in October 2024, with its export value declining from KSh 3.4 billion to KSh 2.3 billion. Similarly, the quantity of tea exported dropped from 51.9 thousand MT in September 2024 to 44.7 thousand MT in October 2024, while its export value fell from KSh 14.4 billion to KSh 12.5 billion, as detailed in Table 10.

The volume of exported cut flowers increased from 6.3 thousand MT in August 2024 to 8.6 thousand MT in September 2024, with their value rising from KSh 4.9 billion to KSh 6.2 billion. Similarly, the volume of exported vegetables rose from 6.8 thousand MT to 9.0 thousand MT, with their value increasing from KSh 2.1 billion to KSh 2.6 billion. In contrast, the volume of exported fruits decreased from 18.1 thousand MT to 15.9 thousand MT, accompanied by a decline in value from KSh 4.6 billion to KSh 3.2 billion during the same period, as outlined in Table 11.



The total trade volume increased from KSh 310.4 billion in September 2024 to KSh 332.8 billion in October 2024. The export value declined from KSh 91.0 billion to KSh 88.3 billion, while the import value rose from KSh 219.4 billion to KSh 244.5 billion during the same period, as

shown in Table 12.

Uganda and the USA were Kenya's primary export destinations in October 2024, with export values of KSh 6.9 billion and KSh 6.5 billion, respectively, as outlined in Table 13(a). The dominant export category was food and beverages, accounting for 41.9 per cent of total exports. Non-food industrial supplies made up 25.2 per cent, while machinery and other capital equipment constituted 2.1 per cent, as presented in Table 13(b).

China and the United Arab Emirates were Kenya's leading import partners in October 2024, with import values of KSh 52.9 billion and KSh 34.7 billion, respectively, as outlined in Table 14(a). The predominant import category was non-food industrial supplies, which accounted for 32.9 per cent of total imports. Fuel and lubricants comprised 20.7 per cent, machinery and other capital equipment made up 13.4 per cent, and food and beverages constituted 9.5 per cent, as shown in Table 14(b).

The number of active mobile money agents decreased from 367,551 in September 2024 to 358,621 in October 2024, while mobile money subscriptions increased from 79.4 million to 80.8 million. Additionally, the total number of transactions rose from 196.5 million to 215.3 million, and the total value of transactions increased from KSh 670.5 billion to KSh 722.3 billion during the same period, as outlined in Table 14(c). The export value of telecommunications equipment decreased from KSh 364.1 million in September 2024 to KSh 97.6 million in October 2024. Similarly, the import value fell from KSh 2.9 billion to KSh 2.8 billion. Notably, the export value of office machines surged fourfold from KSh 7.3 million to KSh 29.0 million during the same period, as detailed in Table 14(d).



Local electricity generation increased from 1,045.5 million kWh in September 2024 to 1,103.5 million kWh in October 2024, as shown in Table 15(a). Similarly, total electricity generation and imports rose from 1,167.9 million kWh in September 2024 to 1,233.6 million kWh in October 2024. KPLC's total sales increased from 905.4 million kWh to 934.5 million kWh. Additionally, electricity imports grew from 122.4 million kWh to 130.1 million kWh. However, electricity exports declined from 3.7 million kWh to 3.1 million kWh during the same period, as detailed in Table 15(b).

In October 2024, the national average retail prices for motor gasoline premium, light diesel oil, and illuminating kerosene were KSh 181.33, KSh 168.82, and KSh 152.18 per litre, respectively. Charcoal prices averaged KSh 85.26 per kg, while the average price of a 13-kg gas cylinder was KSh 3,183.29, as detailed in Table 15(e). On the international market, the OPEC crude oil basket price rose from USD 73.59 per barrel in September 2024 to USD 74.45 per barrel in October 2024, as shown in Table 15(f).

The value of approved residential building plans by Nairobi City County decreased from KSh 25.1 billion in September 2024 to KSh 7.3 billion in October 2024. In contrast, the value of approved non-residential building plans increased from KSh 2.2 billion to KSh 3.3 billion during the same period, as outlined in Table 16.

Sugar production declined from 73.8 thousand MT in September 2024 to 72.9 thousand MT in October 2024, as detailed in Table 17(a). Soft drink production increased from 60.6 million litres in September 2024 to 65.3 million litres in October 2024, as outlined in Table 17(b). The production of assembled vehicles dropped from 1,061 units in September 2024 to 978 units in October 2024, as presented in Table 17(c). Production of galvanized sheets rose from 22.8 thousand MT in September 2024 to 24.9 thousand MT in October 2024, as shown in Table 17(d). Cement production decreased from 780.6 thousand MT in August 2024 to 728.5 thousand MT in September 2024. Similarly, cement consumption declined from 763.7 thousand MT to 713.1 thousand MT during the same period, as shown in Table 17(e). Milk intake in the formal sector rose from 75.5 million litres in September 2024 to 80.3 million litres in October 2024, as indicated in Table 17(f).



The total number of visitor arrivals at Jomo Kenyatta International Airport (JKIA) and Moi International Airport (MIA) fell from 175,113 in August 2024 to 144,996 in September 2024. MIA recorded a 22.5 per cent drop, decreasing from 19,822 to 15,371, while JKIA reported a 16.5 per cent decline, falling from 155,291 to 129,625 during the same period, as shown in Table 18.

Tables 19(a) and 19(b) present data on embarked passengers by port of destination and landed passengers by port of origin through JKIA, respectively. The number of embarked passengers by port of destination rose from 318,346 in July 2024 to 340,256 in August 2024. Similarly, the number of landed passengers by port of origin increased from 327,501 to 335,463 during the same period. The total number of newly registered motor vehicles and motorcycles, categorized by body type, fell from 13,499 units in July 2024 to 9,888 units in August 2024. The number of newly registered motorcycles dropped from 6,060 units to 4,292 units during the same period, as shown in Table 19(c).

The number of passengers traveling by the Standard Gauge Railway (SGR) declined from 281,683 in August 2024 to 175,901 in September 2024, resulting in a corresponding drop in revenue from KSh 440.6 million to KSh 296.4 million. Similarly, the volume of cargo transported via the SGR decreased from 582.4 thousand tonnes to 512.5 thousand tonnes, in contrast, revenue from cargo transport slightly increased to KSh 1.2 billion during the same period, as shown in Table 19 (d). Metre Gauge Railway (MGR) passenger usage declined from 240,026 persons in August 2024 to 231,684 persons in September 2024. Revenue from MGR passenger traffic decreased from KSh 13.7 million to KSh 12.4 million during the same period, as indicated in Table 19(e).

Table 19(f) presents Mombasa Port throughput data. The total volume of cargo handled decreased from 3.5 million MT in August 2024 to 3.4 million MT in September 2024. Export volume fell from 410.8 thousand MT to 410.0 thousand MT, while import volume declined from 2.7 million MT to 2.5 million MT during the same period. In contrast, transshipment volume grew from 380.2 thousand MT to 493.6 thousand MT, and restows increased from 8.8 thousand MT to 14.4 thousand MT.

Table 1(a): Consumer Price Indices

Base : February 2019=100						
Period/Group	Nairobi				Rest of Urban Areas	Kenya CPI
	Lower Income	Middle Income	Upper Income	Nairobi Combined		
2023						
January	130.98	118.93	117.93	125.57	131.94	129.29
February	131.92	119.38	118.32	126.29	132.86	130.13
March	132.97	119.90	118.81	127.10	134.09	131.18
April	133.49	120.76	119.07	127.70	134.77	131.83
May	134.64	121.47	120.10	128.69	136.08	133.01
June	135.67	122.27	120.62	129.59	137.16	134.01
July	135.57	122.37	121.11	129.63	137.37	134.15
August	135.39	122.59	121.21	129.60	137.17	134.02
September	136.68	124.05	123.20	131.03	138.38	135.32
October	138.22	124.94	124.48	132.33	139.83	136.71
November	138.49	125.17	124.75	132.58	140.20	137.03
December	138.89	125.94	125.43	133.14	140.69	137.55
2024						
January	139.19	126.94	125.97	133.69	141.33	138.15
February	139.47	127.41	126.39	134.05	141.39	138.34
March	139.95	127.48	126.58	134.37	141.72	138.66
April	139.59	127.21	126.35	134.05	141.50	138.40
May	141.02	127.96	126.96	135.17	142.82	139.64
June	141.50	128.59	127.14	135.65	143.48	140.23
July	141.05	128.35	127.09	135.32	143.22	139.94
August	141.15	128.66	127.00	135.47	143.00	139.87
September	141.34	129.12	127.47	135.77	143.24	140.13
October	141.48	129.86	127.75	136.12	143.50	140.44

Notes

1.Nairobi Lower Income Group constitute of Households spending KSh. 46,355 or less per month in February 2015 (they are 70.89% of the households).

2.Nairobi Middle-Income Group constitute of Households spending between KSh. 46,356 up to and including KSh. 184,394 per month in February 2015 (they are 25.58% of the households).

3.Nairobi Upper Income Group constitute of Households spending above KSh. 184,395 per month in February 2015 (they are 3.53% of the households).

Table 1(b): Inflation Rates

Inflation Rates						
Period/Group	Nairobi				Rest of Urban Areas	Kenya Inflation
	Lower Income	Middle Income	Upper Income	Nairobi Combined		
2023						
January	9.11	7.69	7.05	8.44	9.35	8.98
February	9.25	7.73	7.10	8.54	9.70	9.23
March	9.04	7.57	6.75	8.34	9.77	9.19
April	7.71	6.96	5.57	7.24	8.35	7.90
May	7.81	7.02	5.75	7.34	8.50	8.03
June	7.66	6.67	5.50	7.12	8.41	7.88
July	6.73	6.00	5.38	6.36	7.91	7.28
August	6.10	5.75	5.16	5.89	7.29	6.73
September	6.30	5.76	5.42	6.04	7.29	6.78
October	6.68	5.85	6.25	6.38	7.29	6.92
November	6.49	5.87	6.39	6.29	7.14	6.80
December	6.35	6.16	6.62	6.32	6.84	6.63
2024						
January	6.27	6.73	6.82	6.47	7.11	6.85
February	5.72	6.73	6.82	6.15	6.42	6.31
March	5.25	6.33	6.53	5.72	5.69	5.70
April	4.57	5.35	6.11	4.97	4.99	4.99
May	4.74	5.35	5.71	5.03	4.95	4.98
June	4.29	5.17	5.41	4.68	4.61	4.64
July	4.04	4.88	4.94	4.40	4.25	4.31
August	4.26	4.95	4.78	4.52	4.25	4.36
September	3.41	4.08	3.46	3.62	3.51	3.56
October	2.36	3.94	2.63	2.87	2.63	2.72

Figure 1: Inflation Rates: 2023 - 2024



Table 2: Mean Monthly Foreign Exchange Rates of Kenyan Shilling against Selected Major Currencies

Currency/Period	1 US Dollar	1 Pound Sterling	1 Euro	100 Japanese Yen	1 SA Rand	USHS/KES	TSHS/KES
2023							
January	123.93	151.33	133.43	95.05	7.25	29.79	18.85
February	125.45	151.87	134.53	94.66	7.03	29.36	18.64
March	129.74	157.35	138.79	96.95	7.09	28.84	18.04
April	134.40	167.26	147.39	100.71	7.40	27.87	17.45
May	137.26	171.35	149.22	100.14	7.22	27.18	17.18
June	139.73	176.27	151.37	99.12	7.46	26.54	17.08
July	141.45	182.06	156.29	100.16	7.76	25.93	17.26
August	143.93	182.92	157.10	99.45	7.69	25.61	17.31
September	146.77	182.29	156.89	99.46	7.74	25.48	17.04
October	149.40	181.86	157.77	99.86	7.83	25.13	16.76
November	152.03	188.57	164.21	101.48	8.20	24.89	16.46
December	154.09	194.98	167.98	106.77	8.26	24.54	16.28
2024							
January	159.69	202.88	174.31	109.40	8.50	23.84	15.79
February	151.84	191.67	163.78	101.58	7.99	25.58	16.80
March	137.35	174.58	149.31	91.77	7.27	28.40	18.60
April	131.57	164.69	141.13	85.57	6.96	29.07	19.63
May	131.69	166.47	142.40	84.50	7.15	28.79	19.70
June	129.36	164.54	139.36	82.02	7.02	29.03	20.23
July	129.87	166.91	140.75	82.22	7.12	28.54	20.56
August	129.32	167.28	142.44	88.45	7.17	28.78	20.93
September	129.20	170.74	143.52	90.34	7.34	28.73	21.08
October	129.20	168.79	140.94	86.41	7.36	28.40	21.09

Source: Central Bank of Kenya

Figure 2: Mean Monthly Foreign Exchange Rates of Kenya Shillings against Selected Major Currencies

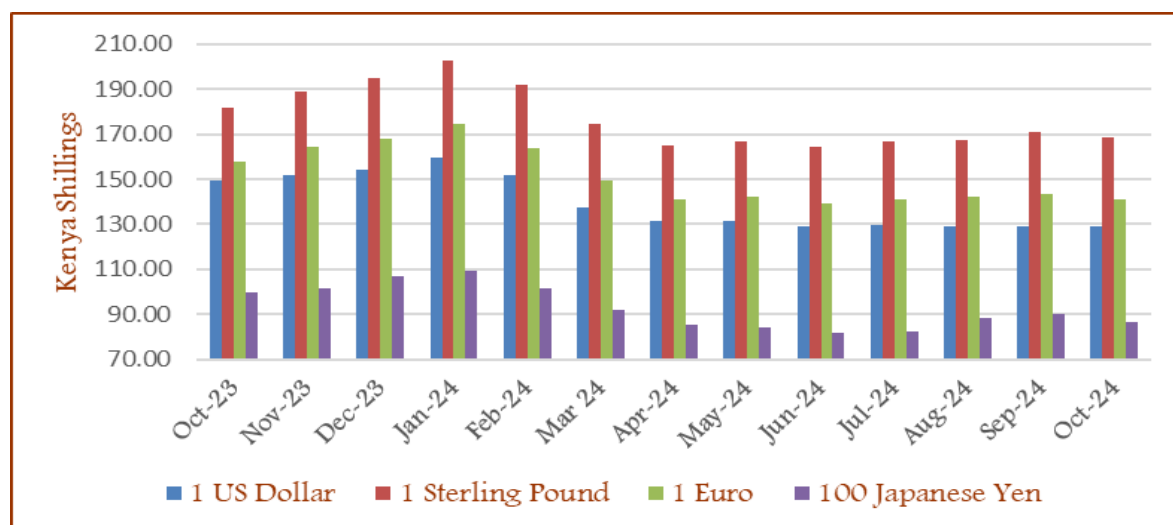


Table 3: Interest rate (%)

Descriptions/ Period	Rates for Commercial Banks						
	Average Yield Rates 91 – Days Treasury Bills	Central Bank Rate	Loans and Advances (Weighted Average)	Overdraft Rates	Average Deposit Rate	Inter – Bank Rates	Savings (Commercial Banks Rates)
2023							
January	9.44	8.75	12.77	12.34	7.47	5.89	3.60
February	9.62	8.75	13.06	12.62	7.54	6.42	3.58
March	9.76	9.50	13.09	12.69	7.60	7.05	3.55
April	10.04	9.50	13.10	12.71	7.69	8.55	3.59
May	10.47	9.50	13.21	12.64	7.61	9.36	3.92
June	11.49	10.50	13.31	12.83	7.80	9.48	3.92
July	12.12	10.50	13.50	12.84	8.10	10.34	3.97
August	13.25	10.50	13.83	13.24	8.39	12.57	4.05
September	14.38	10.50	13.98	13.62	8.64	12.36	4.00
October	14.96	10.50	14.16	14.09	9.11	12.70	3.98
November	15.32	10.50	14.43	14.29	9.48	11.32	4.01
December	15.70	12.50	14.63	14.65	10.10	11.65	4.24
2024*							
January	16.14	12.50	15.20	15.11	10.18	13.65	3.69
February	16.51	13.00	15.88	15.55	10.32	13.59	3.33
March	16.68	13.00	16.28	15.97	10.52	13.42	3.90
April	16.16	13.00	16.45	16.37	10.77	13.70	4.14
May	15.91	13.00	16.60	16.52	11.13	13.62	4.45
June	15.97	13.00	16.85	16.78	11.48	13.14	5.11
July	16.00	13.00	16.84	16.43	11.28	13.17	4.56
August	15.85	12.75	16.84	16.39	11.59	13.01	4.62
September	15.75	12.75	16.91	16.83	12.09	12.67	3.57
October	14.97	12.00	17.15	16.60	11.85	12.07	4.48

Source: Central Bank of Kenya

* Provisional

Table 4: Nairobi Securities Exchange 20 Share Index

Descriptions/ Period	Number of Equity Transactions	Number of Shares (Million)	Equity turnover (KSh Million)	NSE 20 Share Index
2023				
January	24,675	333	7,814	1,657
February	19,068	170	4,606	1,647
March	29,362	584	32,396	1,622
April	20,983	199	4,219	1,579
May	29,729	355	6,093	1,547
June	23,662	211	4,083	1,575
July	23,569	417	7,623	1,577
August	23,885	241	4,378	1,540
September	20,474	424	5,216	1,508
October	20,127	329	4,835	1,461
November	21,618	275	3,689	1,496
December	15,329	208	3,277	1,501
2024				
January	19,180	152	2,685	1,509
February	20,275	276	4,605	1,536
March	25,008	670	11,775	1,752
April	27,190	301	7,334	1,691
May	27,334	510	16,040	1,722
June	23,076	279	5,016	1,657
July	26,039	294	5,862	1,670
August	25,560	392	6,511	1,678
September	27,733	334	5,019	1,776
October	31,857	382	4,942	1,906

Source: Nairobi Securities Exchange Limited

Base Jan 1966=100

Figure 3: Nairobi Securities Exchange 20 Share Index

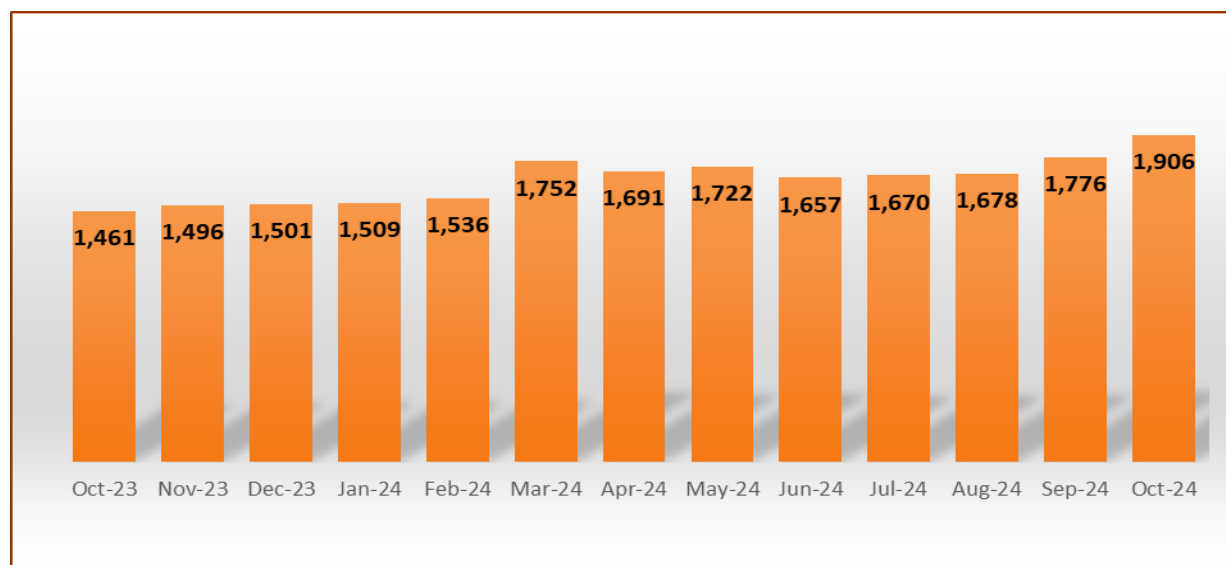


Table 5(a): Money Supply

						KSh million
Descriptions/ Period	Money (M1)*	Quasi – Money**	Total (M2)***	Foreign currency deposits	Broad Money (M3)****	% Change ¹
2023						
January	1,924,057	2,207,127	4,131,184	946,482	5,077,667	0.70
February	2,078,290	2,040,000	4,118,289	983,950	5,102,239	0.48
March	1,863,118	2,275,530	4,138,648	1,059,005	5,197,653	1.87
April	1,903,795	2,278,837	4,182,632	1,076,341	5,258,973	1.18
May	1,901,808	2,315,945	4,217,753	1,092,168	5,309,921	0.97
June	2,072,813	2,309,052	4,389,251	1,186,189	5,575,440	5.00
July	2,106,487	2,318,937	4,425,424	1,248,373	5,673,797	1.76
August	2,086,516	2,359,553	4,446,069	1,328,576	5,774,645	1.78
September	2,000,269	2,441,742	4,442,011	1,399,119	5,841,131	1.15
October	2,000,657	2,431,176	4,431,833	1,450,890	5,882,723	0.71
November	1,995,418	2,459,115	4,454,532	1,497,797	5,952,329	1.18
December	2,024,523	2,471,815	4,496,338	1,548,195	6,044,533	1.55
2024						
January	2,029,949	2,477,978	4,507,928	1,603,158	6,111,086	1.10
February	2,078,302	2,421,621	4,499,923	1,504,058	6,003,981	-1.75
March	1,972,685	2,508,854	4,481,539	1,315,423	5,796,962	-3.45
April	1,940,648	2,523,823	4,464,471	1,371,801	5,836,272	0.68
May	1,948,029	2,577,685	4,525,714	1,324,366	5,850,080	0.24
June	2,038,280	2,585,603	4,623,883	1,341,737	5,965,620	1.98
July	1,987,425	2,637,742	4,625,167	1,392,673	6,017,840	0.88
August	1,900,610	2,788,607	4,689,217	1,321,052	6,010,268	-0.13
September	1,953,455	2,698,474	4,651,929	1,340,222	5,992,151	-0.30
October	1,983,193	2,698,078	4,681,271	1,306,194	5,987,465	-0.08

Source: Central Bank of Kenya(Expanded)

* Currency in circulation less cash in banks plus all demand deposits except those of National & County government, Banks, non-residents and foreign currency deposits

** All other deposits in commercial banks, except those of National government.

***Broad money (M2) is the sum of M1, Quasi money in Banks and Quasi money in NBFIs..

**** Broad Money (M3) includes M2 and Foreign currency deposits

M2=(M1+QM-NBFIs)

M3=M2+FCD

¹ Percentage change of M3

Table 5(b): Gross Foreign Exchange Reserves

							KSh million*
Descriptions/ Period	Central Monetary Authority		Total	Foreign Assets		Gross Total	Net of Foreign Exchange Liabilities
	Central Bank	National Government**		Commercial Banks	NBFI		
2023							
January	931,499	2,376	933,875	487,917	362	1,422,153	247,454
February	911,017	2,385	913,402	521,306	107	1,434,815	235,002
March	921,769	2,521	924,290	613,377	96	1,537,753	311,230
April	963,265	2,594	965,859	600,488	168	1,566,515	326,890
May	977,742	2,606	980,348	627,000	221	1,607,569	354,713
June	1,136,049	2,652	1,138,701	720,723	236	1,859,659	594,125
July	1,129,071	2,714	1,131,785	814,743	250	1,946,778	628,959
August	1,112,768	2,745	1,115,513	875,971	221	1,991,704	675,250
September	1,118,738	2,760	1,121,498	935,472	684	2,057,653	711,269
October	1,137,401	2,803	1,140,204	973,984	607	2,114,795	746,556
November	1,132,252	2,898	1,135,149	1,043,486	1560	2,180,195	774,657
December	1,143,840	2,975	1,146,815	1,066,127	658	2,213,600	796,551
2024							
January	1,281,970	3,033	1,285,003	1,145,491	475	2,430,969	857,822
February	1,196,367	2,714	1,199,081	1,191,317	852	2,391,249	886,139
March	1,038,582	2,483	1,041,065	990,506	192	2,031,764	751,958
April	1,044,816	2,490	1,047,306	1,048,512	680	2,096,498	824,171
May	1,002,599	2,448	1,005,047	1,010,842	455	2,016,343	782,330
June	1,102,363	2,420	1,104,783	1,033,014	391	2,138,188	908,300
July	1,071,789	2,451	1,074,241	1,108,492	659	2,183,391	924,716
August	1,029,734	2,470	1,032,203	1,044,877	654	2,077,735	884,167
September	1,115,128	2,489	1,117,616	1,006,281	837	2,124,734	895,764
October	1,201,194	2,487	1,203,681	886,128	497	2,090,306	880,123

Source: Central Bank of Kenya

* Includes encumbered reserves

**National Government includes reserve position in the Fund and deposits with Crown Agents.

Table 6: Coffee Sales and Prices

Descriptions/ Period	2023			2024*		
	QUANTITY (MT)	PRICE (\$ /Kg)	PRICE (KSh /Kg)	QUANTITY (MT)	PRICE (\$ /Kg)	PRICE (KSh /Kg)
January	4,439.65	4.87	603.31	4,553.00	4.28	684.31
February	5,598.25	5.41	680.21	4,824.00	5.09	775.33
March	5,072.50	4.80	621.55	5,070.00	4.84	665.42
April	4,407.45	4.22	565.89	6,878.66	4.98	654.32
May	1,373.50	4.41	603.87	3,462.38	3.97	523.40
June	**	**	**	4,523.73	4.33	560.81
July	**	**	**	939.89	4.03	519.79
August	154.15	4.57	655.84	3,033.55	4.80	619.65
September	339.85	4.67	685.08	2,648.57	4.91	633.52
October	1,419.00	3.99	594.62
November	1,677.00	3.69	559.87			
December	3,039.00	3.81	588.57			
Annual	27,520.35	4.44	615.88	35,933.77	4.58	626.28

Source: Agriculture and Food Authority ; Coffee Directorate

MT denotes Metric Tonnes

** Nairobi Coffee Exchange was in recess in June 2023 and July 2023

* Provisional

.. Data not available

Figure 4: Coffee Sales at the Nairobi Coffee Exchange



Table 7: Tea Production, Auction Volume, and Prices

Descriptions/ Period	2023				2024*			
	Production Volume (MT)	Auction Volume (MT)	Average Auction Price (USD/kg)	Average Auction Price (KSh/kg)	Production Volume (MT)	Auction Volume (MT)	Average Auction Price (USD/kg)	Average Auction Price (KSh/kg)
January	54,919.19	39,621.61	2.33	288.71	58,966.89	42,484.59	2.19	349.72
February	32,730.27	32,227.62	2.31	290.67	55,447.32	39,118.44	2.23	338.60
March	30,488.79	27,393.28	2.39	310.52	52,054.58	42,352.78	2.15	295.30
April	49,491.39	32,928.63	2.39	320.82	53,852.78	43,630.73	2.29	301.30
May	57,885.91	30,759.34	2.19	300.45	54,529.18	31,055.20	2.18	287.08
June	48,127.89	29,729.64	2.09	291.87	46,242.16	28,469.43	2.14	276.83
July	44,696.62	33,371.87	2.06	291.30	40,826.14	34,147.70	2.21	287.01
August	45,577.65	30,740.16	2.25	323.97	38,628.82	25,110.26	2.26	292.26
September	48,497.30	27,372.57	2.25	329.46	42,413.38	32,582.00	2.07	267.44
October	52,792.67	38,632.75	2.16	322.60	..	22,605.00	2.10	271.32
November	50,905.52	33,172.10	2.17	329.82				
December	54,335.96	26,950.83	2.19	337.00				
Annual	570,449.16	382,900.39	2.23	311.43	442,961.25	341,556.11	2.18	296.69

Source ; Tea Board of Kenya

*Provisional

.. Data not available

Figure 5: Tea Production

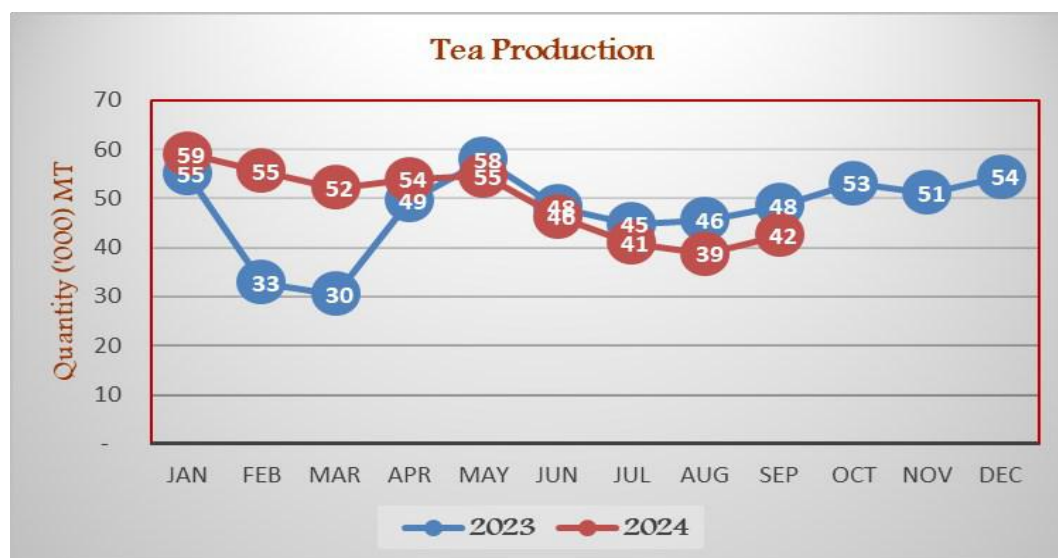


Table 8: Cane Deliveries

Period	000 Metric Tonnes				
	2020	2021	2022	2023	2024*
January	522.89	681.54	691.11	908.58	713.51
February	529.94	660.44	664.01	716.27	756.00
March	583.14	709.46	825.18	546.15	834.88
April	534.69	631.43	719.48	405.39	702.41
May	544.36	636.46	673.20	408.19	679.31
June	572.37	639.35	763.30	436.69	887.60
July	625.61	636.55	751.84	395.23	926.38
August	629.10	679.56	512.85	295.81	800.29
September	645.31	517.93	680.00	182.97	800.05
October	644.24	551.68	824.14	282.08	807.87
November	594.18	663.71	779.61	296.17	
December	468.59	649.40	700.70	610.02	
Total	6,894.40	7,657.50	8,585.40	5,483.55	7,908.30

Source :Agriculture and Food Authority ; Sugar Directorate

* Provisional

Figure 6: Cane Deliveries

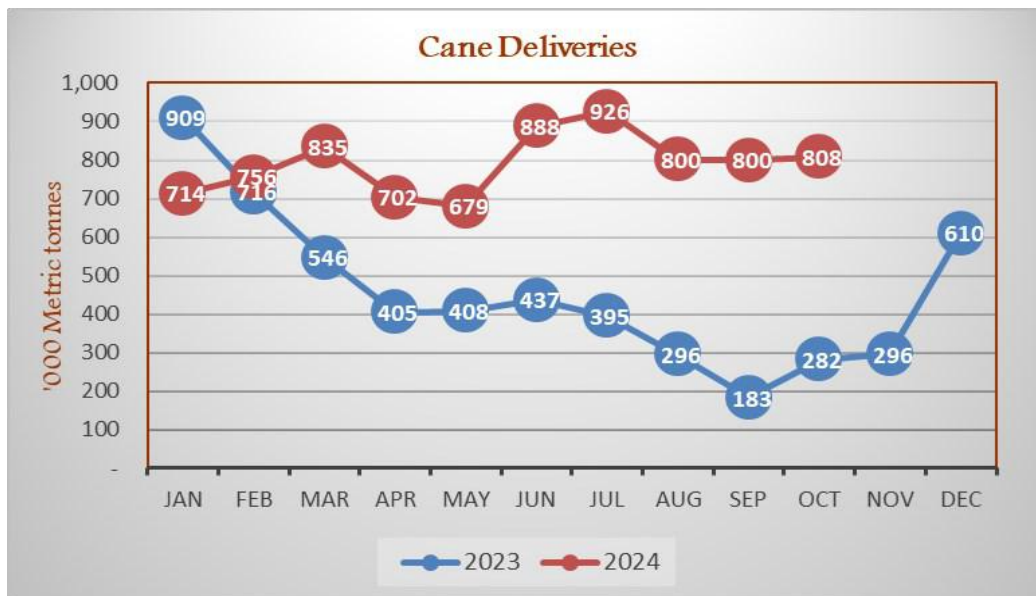


Table 9(a): Average Monthly Retail Prices for Dry Maize, 2023 (per Kg)

County	Market	Month											
		Jan	Feb	Mar	Apr	May	Jun	Jul	Aug	Sep	Oct	Nov	Dec
Mombasa	Mwembe Tayari	94.0	95.0	90.0	94.0	100.0	95.0	98.0	83.8	63.8	72.0	80.0	92.5
	Majengo	122.5	135.0	102.5	96.3	95.0	90.0	87.0	83.8	70.0	70.0	67.5	67.5
	Mackinon	90.0	90.0	90.0	90.0	90.0	100.0	100.0	97.5	90.0	100.0	100.0	100.0
	Sega	120.0	118.8	103.8	95.0	95.0	97.5	103.0	91.3	90.0	90.0	90.0	90.0
Kwale	Kongowea	78.0	76.3	75.0	75.0	80.0	80.0	77.0	65.0	60.0	70.5	66.9	67.5
	Kwale	86.0	78.8	77.5	92.5	98.0	100.0	94.0	90.0	85.0	76.0	77.5	70.0
Kilifi	Kibauni Kilifi	70.0	72.5	77.5	76.3	75.0	76.3	77.0	67.5	62.5	68.6	65.0	62.5
Tana River	Hola	72.0	70.0	70.0	70.0	70.0	70.0	74.0	70.0	65.0	70.0	70.0	70.0
Lamu	Mkunguni	100.0	100.0	100.0	100.0	106.0	117.5	104.0	100.0	100.0	100.0	100.0	100.0
Taita/Taveta	Voi	70.0	73.8	78.1	80.0	77.5	80.0	73.5	63.8	57.5	55.0	55.0	51.3
Garissa	Garissa Town	75.0	75.0	75.0	75.0	75.0	100.0	100.0	93.8	125.0	95.0	75.0	75.0
Wajir	Wajir Town	73.9	100.0	96.3	113.8	103.0	85.6	112.5	135.0	112.5	100.0	137.5	141.3
Mandera	Mandera Town	124.0	135.0	140.0	150.0	148.0	125.0	120.0	135.0	140.0	140.0
Marsabit	Marsabit Town	70.0	70.0	70.0	70.0	72.0	85.0	92.0	80.0	80.0	80.0	80.0	80.0
Isiolo	Isiolo Town	88.6	80.0	92.5	100.0	88.0	85.0	100.0	92.5	97.5	92.0	90.0	82.5
Meru	Maua	77.8	79.2	77.8	77.8	82.2	88.9	85.6	77.8	77.8	77.8	75.0	73.6
	Kianjai	66.7	72.2	72.2	66.7	73.3	80.6	80.0	66.7	66.7	66.7	77.8	77.8
Tharaka-Nithi	Gakoromere	77.8	77.8	86.1	88.9	91.1	86.1	88.9	86.1	77.8	77.8	72.2	80.6
	Chuka Town	81.9	82.0	81.6	81.6	85.1	92.1	89.8	81.2	81.8	80.3	80.4	66.1
Embu	Runyenjes	87.4	76.4	87.3	94.0	81.9	75.8	83.3	73.5	65.9	68.0	76.2	76.2
	Embu Town	87.0	74.0	86.1	96.4	85.2	82.4	83.1	72.3	68.2	70.2	62.0	62.8
	Iciara	87.4	76.4	91.0	98.2	91.4	84.6	83.7	74.3	75.9	76.2	76.2	76.2
	Kiritiri	89.4	76.9	90.3	96.3	83.1	78.6	76.4	78.4	68.2	68.2	68.2	68.2
Kitui	Siakago	85.5	78.8	92.7	97.0	87.6	87.6	83.4	77.9	68.2	66.7	63.1	67.5
	Kalundu	61.0	66.3	70.0	70.0	75.0	76.3	73.0	62.5	56.3	55.0	52.5	53.8
Machakos	Kabati	60.0	60.0	75.0	77.5
	Machakos Town	84.4	87.5	96.3	85.0	86.0	85.0	85.0	79.4	70.0	70.0	70.0	70.0
Makueni	Tala	..	75.0	70.0
	Wote	72.0	70.0	70.0	70.0	70.0	75.0	80.0	73.8	65.0	65.0	65.0	65.0
Nyandarua	Engineer	87.0	85.0	85.0	88.8	90.0	90.0	90.0	90.0	90.0	85.0	85.0	80.0
	Oj Kalou	87.0	82.5	85.0	88.8	90.0	90.0	90.0	90.0	90.0	90.0	85.0	81.3
Nyeri	Nyeri	79.2	80.8	77.0	75.8	83.2	88.1	83.3	70.5	60.9	60.3	53.9	55.6
	Karatina	80.6	81.4	84.2	78.1	79.8	84.8	85.6	71.3	70.6	73.2	68.7	68.4
Kirinyaga	Kutus	74.5	76.7	84.1	79.2	85.5	77.1	76.7	70.2	69.0	66.9	68.7	68.3
	Kerugoya	78.5	78.5	82.1	80.0	80.5	81.1	80.4	70.9	67.0	64.3	66.0	69.8
Murang'a	Muthithi	75.1	83.0	..	77.5	75.3	71.1
	Makuyu	82.0	82.6	92.5	87.3	81.3	82.0	80.6	78.1	71.1	73.2	72.8	68.7
	Kiriaini	81.0	82.6	88.6	78.1	..	89.1	83.0
Kiambu	Kiambu	90.0	90.0	87.5	100.0	96.0	100.0	100.0	80.0	80.0	80.0	80.0	80.0
	Limuru	73.0	72.5	80.0	80.0	80.0
	Thika	80.0	80.0	80.0	80.0	86.0	100.0	98.0	97.5	87.5	74.0	80.0	80.0
	Githurai	68.0	70.0	80.0	80.0	80.0	85.0	87.0	92.5	90.0	90.0	90.0	90.0
Turkana	Gatundu	80.0	80.0	80.0	75.0	82.0	97.5	94.0	87.5	82.5	84.0	77.5	82.5
	Lodwar	98.3	90.6	83.3	112.5	91.5	103.8	123.9	95.5	92.7	100.0	86.2	100.0
West Pokot	Makutano	60.0	63.0	72.0	72.0	76.0	80.0	79.2	60.0	55.0	40.0	38.0	40.0
Trans Nzoia	Kitale	65.3	65.1	69.1	83.4	70.8	71.1	69.5	62.6	51.6	51.8	43.7	44.3
Uasin Gishu	Eldoret	80.0	85.6	66.5	57.2
	Burn Forest	59.1	60.8	64.0	74.7	82.9	88.9	85.4	67.3	58.6	52.0
	Turbo	61.3	63.0	60.0	62.0	76.5	72.0	71.2	70.0	68.0
Elgeyo-Marakwet	Kipkaren	60.0	61.6	61.0	62.0	76.5	72.0	70.4	70.0	68.0
	Iten	73.0	70.0	90.5	85.0	91.0	100.0	100.0	81.3	65.0	55.0	51.3	50.0
Nandi	Kapsabet	64.5	62.5	75.0	75.8	79.4	80.9	78.4	63.0	51.9	44.7	46.7	49.0
Nandi	Chepsonsoi	76.9	79.2	80.0
Baringo	Kabarnet	68.3	67.0	70.5	71.9	78.6	85.2	81.1	70.0	60.5	53.2	50.0	52.5
Laikipia	Nanyuki	86.7	80.6	80.0	78.8	81.0	86.7	84.0	86.3	80.0	80.0	61.7	70.0
	Nyahururu	74.6	77.5	70.0	70.0	77.0	80.0	74.0	61.3	60.0	60.0	60.0	60.0
Nakuru	Nakuru Town	61.7	46.0	46.3	45.0	55.0	57.5	55.0	47.5	50.0	55.0	55.0	55.0
Narok	Muthurwa Narok	63.9	76.8	92.3	108.0	79.2	82.0	78.4	56.0	54.0	55.2	55.8	58.3
Kajiado	Kajiado	82.0	80.0	97.5	110.0	98.0	100.0	92.0	92.5	95.0	95.8	75.0	76.3
	Kericho	89.0	81.3	90.0	90.0	100.0	105.0	95.0	76.3	67.5	63.0	53.8	60.0
Bomet	Kimulot	59.2	53.1	59.1	66.7	77.4	77.7	80.0	64.0	50.0	48.8	48.0	48.0
	Sotik	64.6	59.6	65.4	67.3	79.2	78.8	75.9	60.6	54.3	53.6	49.0	51.0
	Bomet	57.7	57.7	65.4	69.0	83.2	82.7	80.0	66.4	57.7	55.2	48.0	48.0
Kakamega	Mulot	59.2	59.6	65.4	69.2	81.6	79.2	78.3	62.0	57.0	49.6	48.0	48.0
	Butere	57.5	58.3	71.4	70.8	75.0	82.1	69.1	43.7	45.4	49.8	48.7	48.0
	Kakamega	61.7	58.3	61.5	71.6	79.8	82.7	66.4	48.5	50.1	48.2	48.8	53.2
Vihiga	Mumias	57.0	63.9	65.7	68.4	74.4	80.3	63.5	46.2	47.7	47.6	48.2	48.1
	Mbale	59.0	59.4	68.1	75.0	74.0	82.0	81.9	74.5	72.4	68.6
Bungoma	Bungoma Town	63.3	67.7	70.1	72.8	76.6	87.2	77.8	47.1	50.1	49.3	48.2	48.2
Busia	Bumala	60.3	67.0	79.4	80.0	96.0	100.0	68.8	61.3	73.8	71.0	57.5	55.0
	Busia Town	62.1	69.3	83.1	83.1	95.0	100.0	80.0	52.7	65.0	60.0	67.5	63.8
Siaya	Bondo	78.5	72.5	73.2	77.4	80.0	82.4	76.3	61.5	60.0	64.7	60.5	56.9
	Siaya	64.6	66.9	71.5	72.3	78.2	84.2	78.7	67.9	68.5	68.3	68.3	63.5
	Unguja	68.7	64.3	69.2	78.7	86.4	84.7	73.5	63.7	63.8	62.4	64.7	55.0
Kisumu	Kibuye	68.7	69.6	76.1	78.3	76.5	87.0	87.0	76.1	58.7	55.2	59.2	60.9
	Ahero	69.6	69.6	77.2	79.3	80.0	87.5	87.3	68.2	66.0	56.4	58.1	60.9
	Kiboswa	66.1	64.7	76.9	91.8	87.6	83.7	76.0	75.4	60.6	61.3	60.2	60.9
Homa Bay	Sondu	69.6	74.1	85.7	79.3	82.6	87.0	78.3	64.6	55.4	57.6	58.1	60.9
	Homabay	67.7	63.1	72.5	74.4	74.2	83.5	72.9	59.3	56.8	53.3	48.6	47.7
Migori	Soko Mjinga	65.8	58.3	72.1	72.3	77.0	96.1	67.5	60.5	52.2	47.2	62.7	45.7
	Kegonga	52.0	54.0
Kisii	Kehacha	52.0	52.0
	Migori	54.0	54.0	60.0	71.0	72.0	75.5	55.2	53.0	60.0	57.2	52.0	52.0
Nyamira	Daraja Mbili	74.4	68.5	71.0	73.2	74.8	91.9	84.1	71.3	64.1	58.7	56.1	53.8
	Riochanda	67.4	..	82.6
Nairobi City	Nyabite	65.7	67.4	72.3	73.9	76.5	87.0	81.7	64.1	60.9	56.5	56.5	56.5
	Muthurwa	100.0	110.0	90.0	80.0	120.0	120.0	120.0
	Kawangware	80.7	68.1	73.4	79.7	78.1	73.9	80.2	75.5	70.4	..		

Table 9(b): Average Monthly Retail Prices for Dry Maize, 2024 (per Kg)

County	Market	Month									
		Jan	Feb	Mar	Apr	May	Jun	Jul	Aug	Sep	Oct
Mombasa	Mwembe Tayari	106.0	62.5	75.0	75.0	55.0	55.0	55.0	55.0	60.0	60.0
	Majengo	70.0	68.8	61.3	58.8	63.0	62.5	60.0	60.0	60.0	56.0
	Mackinon	100.0	100.0	120.0	87.5	70.0	70.0	57.0	66.3	51.3	63.8
	Sega	90.0	90.0	77.5	72.5	70.0	65.0	63.0	60.0	60.0	56.0
	Kongowea	66.5	53.8	46.3	45.0	47.0	50.0	48.3	45.0	45.0	45.0
Kwale	70.0	
Kilifi	Kibauni Kilifi	60.0	60.0	55.0	42.5	40.0	40.0	40.0	36.7	40.0	40.0
Tana River	Hola	70.0	56.3	50.0	53.3	63.0	68.8	72.0	70.0	46.3	50.0
Lamu	Mkunguni	100.0	100.0	100.0	100.0	124.0	140.0	140.0	120.0	100.0	100.0
Taita/Taveta	Voi	50.0	47.5	42.9	40.0	40.0	40.0	42.5	40.6	40.0	40.0
Garissa	Garissa Town	75.0	75.0	75.0	75.0
Wajir	Wajir Town	173.0	190.0	117.5	138.8	122.0	101.3	108.0
Mandera	Mandera Town	168.6	155.0
Marsabit	Marsabit Town	92.0	70.0	56.3	53.8	50.0	50.0	50.0	50.0	50.0	50.0
Isiolo	Isiolo Town	80.0	82.5	85.0	80.0	74.0	77.5	88.0	87.5	90.0	..
Maua	Maua	73.3	66.7	63.9	55.6	55.6	55.6	61.1	52.8	55.6	55.3
Meru	Kianjai	67.8	52.8	37.5	39.8	42.1	35.3	40.8	43.5
	Gakromere	71.1	70.8	69.4	43.5	51.6	66.3	54.3	48.9	60.9	..
Tharaka-Nithi	Chuka Town	66.3	58.5	53.0	50.2	57.8	55.7	52.8	52.6	52.2	47.6
	Runyenjes	67.6	61.9	52.4	47.1	45.9	46.5	45.0	45.7	47.1	47.6
Embu	Embu Town	60.7	54.5	47.6	47.5	46.2	47.2	44.3	44.5	47.5	47.5
	Iciara	75.2	61.5	52.4	47.1	48.8	48.2	48.6	47.6	47.6	47.5
	Kiritiri	74.6	64.3	48.8	48.3	45.9	46.0	47.6	47.6	47.6	47.6
	Siakago	57.7	60.1	50.0	47.1	43.6	41.0	41.1	42.3	47.0	47.6
Kitui	Kalundu	52.0	48.8	43.8	40.0	40.0	40.0	..	40.0
	Kabati	40.0	40.0
Machakos	Machakos Town	68.5	57.5	49.4	41.3	41.0	40.0	40.0	41.3	50.0	..
Makueni	Vote	58.0	49.0	41.3	46.3	54.0	43.8	42.0	45.0	45.0	..
Nyandarua	Engineer	80.0	80.0	80.0	80.0	73.3
	Oi Kalou	80.0	80.0	80.0	80.0	76.0	75.0	63.0	60.0	50.0	56.3
Nyeri	Nyeri	56.4	51.2	46.3	42.7	42.8	43.3	42.3	44.3	42.0	41.1
	Karatina	69.4	66.3	64.7	67.7	59.9	58.5	48.1	43.1	45.2	45.5
Kirinyaga	Kutus	76.5	67.2	69.3	58.0	43.1	50.3	100.3	48.3	48.9	46.0
	Kerugoya	72.7	65.2	53.8	46.0	51.1	56.2	59.7	49.9	48.6	71.5
Murang'a	Muthithi	..	51.6	52.3	32.6	..	42.9	43.5	..
	Makuyu	67.9	65.1	58.2	48.2	52.2	45.7	43.0	44.5	45.8	46.5
	Kiriaini	..	63.5	59.3	55.8	..	50.0	43.5	..
Kiambu	Kiambu	85.0	77.5	57.5	57.5	50.0	50.0	46.0	40.0	40.0	41.3
	Thika	78.0	72.5	67.5	65.0	60.0	60.0	52.0	60.0	60.0	64.0
	Githurai	90.0	60.0	67.5	62.5	60.0	60.0	66.0	60.0	62.5	60.0
	Gatundu	82.0	87.5	65.0	57.5	50.0	50.0	50.0	55.0	50.0	52.0
Turkana	Lodwar	88.5	146.3	76.5	55.4	73.1	145.0
West Pokot	Makutano	39.0	36.8	40.0	36.0	39.4	37.5	37.8	36.6	36.4	36.4
Trans Nzoia	Kitale	52.5	46.3	43.4	42.2	38.7	38.4	42.0	41.1	73.4	62.5
	Eldoret	53.9	57.1	44.1	62.5	56.4	62.9	59.7	55.9	51.1	44.3
Uasin Gishu	Burn Forest	42.8	50.0	55.0	46.7	43.3	40.1	44.9	46.7
	Turbo	56.1	46.7	40.2	54.5	42.9	39.4	49.2	57.1
	Kipkaren	51.3	44.6	40.2	58.0	45.2	39.8	42.1	52.2
Elgeyo-Marakwet	Iten	61.3	60.0	60.0	53.5	57.1	50.0	58.0	47.5	50.0	50.0
Nandi	Kapsabet	48.0	47.6	47.4	44.6	49.0	48.7	50.0	37.5
Baringo	Kabarnet	50.9	51.2	52.0	50.7	54.5	53.0	51.6	51.1	50.2	51.2
Laikipia	Nanyuki	70.0	65.0	60.0	61.7	50.0	50.0
	Nyahururu	69.0	56.7	50.0	50.0
Nakuru	Nakuru Town	55.0	55.0	55.0	55.0	55.0	55.0	55.0	55.0	55.0	66.0
Narok	Multhurwa Narok	49.6	40.0	50.0	60.0	48.0	40.0
Kajiado	Kajiado	88.0	85.0	60.0	..	60.0	..	80.0	65.0	..	50.0
	Kimulot	49.6	48.0	42.0	38.5	39.1	40.0	40.2	39.2	38.2	39.0
Bomet	Sotik	52.8	48.0	39.2	39.6	38.5	38.2	40.1	38.8	39.5	39.3
	Bomet	53.3	53.3	44.6	38.8	38.5	39.3	41.5	39.8	38.1	39.1
	Mulot	50.4	51.0	40.8	39.2	40.2	38.8	40.6	39.8	31.1	..
Kakamega	Butere	48.2	54.1	36.9	37.5	40.5	42.5	35.0	29.9	33.2	36.7
	Kakamega	54.1	51.9	46.3	46.5	46.0	42.5	39.5	38.6	38.9	38.5
	Mumias	47.5	53.5	48.3	40.8	42.8	41.8	38.5	33.9	36.9	38.5
Vihiga	Mbale	64.9	50.8	49.1	49.0	45.6	39.5	40.5	35.9	34.9	40.6
Bungoma	Bungoma Town	51.1	52.8	53.0	46.1	44.8	44.9	42.8	42.0	36.4	38.3
Busia	Bumala	55.0	41.3	47.5	38.5	37.2	38.7	40.2
	Busia Town	61.0	50.0	50.0	50.0	40.0	35.6	35.6	39.5	39.5	..
Siaya	Bondo	59.0	63.1	57.9	47.9	50.0	46.7	45.3	45.7	45.2	48.8
	Siaya	58.2	56.4	62.0	45.2	47.6	48.6	50.0	47.6	44.9	43.9
	Unguja	58.3	47.0	47.0	50.1	54.9	49.7	47.1	45.2	42.5	41.9
Kisumu	Kibuye	58.3	53.3	50.0	57.6	54.8	46.7	41.7	43.5	40.2	39.1
	Ahero	50.8	50.0	43.8	55.8	45.6	42.3	41.7	41.7	41.8	42.0
	Kiboswa	46.5	49.3	48.4	42.1	37.4	34.8	37.0	39.1
	Sondu	56.5	56.5	48.9	55.9	47.2	42.3	41.7	41.7	41.9	42.6
Homa Bay	Homabay	47.3	41.2	40.0	41.3	44.8	41.7	41.7	..	50.0	50.0
	Soko Mjinga	54.0	37.7	40.7	41.3	42.7	41.7	41.7	..	41.7	41.7
Migori	Migori	64.0	40.0	36.0	32.0	32.8	34.0	35.0	36.0	39.0	35.2
Kisii	Daraja Mbili	55.6	53.5	46.3	41.9	42.8	41.7	40.7	38.7	39.0	38.8
Nyamira	Nyabite	52.2	46.7	43.5	43.5	43.5	41.7	43.5	40.2	38.3	39.1
	Muthurwa	70.0	80.0	80.0	92.0	100.0	75.1	70.0
	Kawangware	46.1	43.1	42.5	37.4	44.2	35.4	37.6
	Burma	120.2	70.6	92.8	84.7	86.7	47.9	45.3	43.5	45.1	..
	Gikomba	64.1	58.9	57.4	52.2	51.3	72.7	47.1	50.9
	Kangemi	130.0	130.0	132.5	130.0	100.7	44.7	43.8	44.0	48.1	..
Nairobi City	Korokocho	58.8	70.7	60.7	94.2	97.6	61.7	44.2	43.5	46.1	43.5
	Toi	58.2	58.6	57.4	48.2	50.9	49.9	49.8	50.2	47.4	46.6
	Kayole	79.0	80.0	70.0	65.0	60.0	60.0	60.0	60.0	60.0	60.0
	Total	68.7	63.7	57.2	55.4	53.2	50.9	50.8	47.9	47.5	49.0

The total price is the average weighted prices depending on the number of markets and number of cycles per county.

.. Data not available

Table 9(d): Average Monthly Retail Prices for Dry Beans, 2024 (per Kg)

County	Market	Month									
		Jan	Feb	Mar	Apr	May	Jun	Jul	Aug	Sep	Oct
Mombasa	Mwembe Tayari	174.0	145.0	143.3	146.0	118.0	117.5	132.0	120.0	100.0	108.0
	Majengo	130.0	110.0	110.0	100.0	100.0	100.0	100.0	100.0	100.0	100.0
	Mackinon	200.0	187.5	180.0	145.0	126.0	147.5	144.0	125.0	135.0	122.5
	Sega	146.0	127.5	122.5	117.5	120.0	120.0	116.0	102.5	120.0	120.0
	Kongowea	118.0	97.5	86.3	80.0	84.0	88.8	84.2	80.0	80.0	82.5
Kwale	Kwale	140.0
Kilifi	Kibauni Kilifi	120.0	110.0	95.0	90.0	90.0	90.0	90.0	71.7	70.0	85.0
Tana River	Hola	156.0	176.0	180.0	162.5	160.0	167.5	170.0	172.5	160.0	145.0
Lamu	Mkunguni	184.0	180.0	180.0	180.0	204.0	180.0	155.0	140.0	140.0	140.0
Taita/Taveta	Voi	157.7	149.6	148.1	144.2	132.7	144.2	144.0	128.8	120.0	122.8
Garissa	Garissa Town	166.0	170.0	186.7	166.7
Wajir	Wajir Town	155.8	185.0	167.5	185.0	127.5	150.0	146.0
Mandera	Mandera Town	178.3	166.7
Marsabit	Marsabit Town	186.0	165.0	112.5	87.5	100.0	100.0	100.0	100.0	87.5	50.0
Isiolo	Isiolo Town	126.0	180.0	170.0	182.5	178.0	180.0	148.0	145.0	155.0	..
Meru	Maua	108.9	100.0	97.2	100.0	95.6	88.9	95.6	105.6	88.9	87.1
	Kianjai	120.0	97.2	88.9	87.8	89.3	85.7	81.6	81.6
Tharaka-Nithi	Gakoromere	162.2	155.6	166.7	160.7	146.9	125.0	155.1	153.1	153.1	153.1
	Chuka Town	132.9	121.7	123.7	117.6	104.1	104.2	106.6	105.1	101.9	..
Embu	Runyenjes	132.3	123.5	122.0	134.7	138.4	118.5	129.0	136.4	142.9	142.9
	Embu Town	100.0	95.9	119.0	118.7	107.5	141.5	141.5	118.5	142.5	142.6
	Iciara	175.4	124.4	132.1	148.8	160.8	161.0	139.1	144.6	142.9	142.6
	Kiritiri	178.2	137.5	125.0	148.2	147.8	132.0	143.1	144.6	142.9	142.9
	Siakago	117.6	123.8	122.6	134.5	140.4	109.5	134.2	150.9	140.9	142.9
Kitui	Kalundu	161.0	148.8	138.8	140.0	133.3	137.1	..	125.0
	Kabatā	130.0	135.0
Machakos	Machakos Town	171.5	175.0	180.0	180.0	180.0	180.0	180.0	180.0	180.0	..
Makueni	Wote	148.0	142.0	152.5	157.5	160.0	155.0	160.0	160.0	160.0	..
Nyandarua	Engineer	200.0	200.0	200.0	170.0	160.0
	Oj Kalou	200.0	200.0	200.0	170.0	170.0	158.3	180.0	183.3	186.7	186.7
Nyeri	Nyeri	169.4	143.2	127.7	132.6	123.2	137.4	126.8	119.4	114.9	120.7
	Karatina	152.5	191.8	151.0	145.6	141.2	142.6	147.9	150.2	159.7	176.3
Kirinyaga	Kutus	136.6	134.9	133.4	130.7	115.4	113.5	112.6	102.9	120.8	116.3
	Kerugoya	136.4	130.4	129.4	131.8	120.8	99.5	140.2	121.5	128.3	132.3
Murang'a	Muthithi	..	105.0	97.4	56.5	..	113.6	116.3	..
	Makuyu	124.3	117.8	120.1	139.2	125.8	114.4	114.7	113.7	115.0	111.2
Kiambu	Kiriaini	..	108.2	108.6	122.0	..	142.9	108.7	..
	Kiambu	183.1	210.0	179.1	164.0	175.3	175.8	173.3	173.3	173.3	182.5
	Thika	153.6	184.0	175.8	160.8	168.7	181.7	164.0	163.3	170.8	172.7
	Githurai	125.0	156.3	151.7	150.9	148.0	150.8	141.5	138.3	129.2	132.5
	Gatundu	180.6	170.0	156.7	153.3	155.3	157.0	150.0	149.0	155.0	152.9
Turkana	Lodwar	164.7	164.5	158.3	140.9	141.9	123.5
West Pokot	Makutano	93.8	192.9	153.3	172.5	146.7	143.6	126.2	126.4	121.5	113.2
Trans Nzoia	Kitale	121.1	131.4	145.5	152.5	152.5	170.9	146.3	155.4	147.9	145.8
Uasin Gishu	Eldoret	173.2	186.2	193.6	188.7	204.9	200.1	186.1	188.0	173.9	152.2
	Burn Forest	175.0	169.3	162.5	159.1	154.5	157.8	157.0	149.0
	Turbo	200.0	200.0	250.0	203.3	200.0	188.8	162.4	166.7
Elgeyo-Marakwet	Kipkaren	200.0	200.0	200.0	172.2	173.0	200.0	183.7
	Iten	170.0	150.0	168.8	135.0	160.0	150.0	145.0	100.0	125.0	118.3
Nandi	Kapsabet	153.8	150.1	146.5	154.6	148.8	150.4	145.8	154.2
Baringo	Kabarnet	218.6	206.3	179.9	200.2	206.7	194.9	212.7	210.1	207.8	201.5
Laikipia	Nanyuki	132.0	147.5	150.0	143.3	117.5	120.0
	Nyahururu	130.0	93.3	126.7	120.0
Nakuru	Nakuru Town	131.2	133.8	136.7	142.5	155.4	137.7	136.9	135.4	135.8	136.7
Narok	Muthurwa Narok	110.4	96.0	98.0	100.0	84.0	152.8
Kajiado	Kajiado	207.7	209.2	180.0	..	175.0	..	185.0	155.0	..	150.0
Bomet	Kimulot	151.5	144.7	133.7	128.9	144.9	147.8	153.0	156.5	122.3	149.4
	Sotik	151.9	137.2	134.8	132.4	141.2	142.7	143.1	151.3	149.5	153.8
	Bomet	154.0	142.9	141.5	138.0	138.1	152.4	185.9	152.9	155.7	151.9
	Mulot	151.9	148.9	146.2	135.9	143.8	145.4	156.4	174.2	133.6	..
Kakamega	Butere	208.3	178.1	180.3	195.1	201.9	192.1	157.7	165.9	181.8	175.8
	Kakamega	183.9	189.6	206.5	215.9	198.7	194.2	185.1	213.6	202.8	191.9
	Mumias	152.4	175.2	208.0	212.4	207.2	197.3	182.5	184.1	186.7	171.7
Vihiga	Mbale	262.5	198.8	214.4	225.0	211.6	203.7	207.6	231.3	210.7	197.9
Bungoma	Bungoma Town	184.5	192.3	196.6	170.3	175.1	162.1	185.8	155.4	142.5	143.7
Busia	Bumala	199.0	196.3	201.9	170.9	170.9	182.5	194.8
	Busia Town	210.0	212.5	206.3	210.9	198.8	192.3	183.8	192.3	192.3	..
Siaya	Bondo	244.5	244.9	228.3	217.8	228.9	238.2	224.7	182.3	205.1	222.5
	Siaya	236.9	222.1	217.1	223.5	222.5	230.4	223.4	205.3	202.7	214.3
Kisumu	Unguja	236.6	228.5	234.3	240.1	243.1	227.1	232.7	228.8	222.5	225.0
	Kibuye	163.6	159.1	159.1	159.1	159.1	142.0	134.5	159.1	159.1	159.1
	Ahero	143.9	159.1	155.8	163.0	146.1	130.4	134.8	152.2	151.5	148.2
	Kiboswa	178.4	187.7	182.8	163.0	134.6	123.6	160.7	164.6
Homa Bay	Sondu	150.0	175.0	175.0	157.9	143.5	130.4	133.5	152.2	152.2	152.2
	Homabay	176.0	175.9	173.0	194.7	171.7	149.0	173.1	..	192.3	153.8
	Soko Mjinga	153.0	172.2	175.0	184.0	155.1	168.3	157.7	..	173.1	134.6
Migori	Migori	206.5	195.7	195.7	208.3	..	173.9	187.2	220.6	208.3	187.2
Kisii	Daraja Mbili	149.9	152.4	158.8	169.4	167.9	171.4	169.7	164.6	105.7	125.8
	Nyabtie	178.2	193.2	170.5	181.8	181.8	175.2	166.7	166.7	174.2	147.9
Nyamira	Muthurwa	200.0	140.0	140.0	145.0	150.0	189.1	190.0
	Kawangware	72.4	71.6	75.8	74.0	71.0	75.8	73.9
	Burma	172.8	95.5	130.9	186.2	216.5	195.9	195.7	195.7	195.7	..
	Gikomba	190.8	200.2	188.5	190.0	190.8	193.7	205.4	161.4
	Kangemi	225.0	225.7	225.0	225.0	198.0	82.8	94.3	137.4	220.0	..
	Korokocho	158.8	132.1	103.3	203.3	198.1	114.3	93.0	92.8	183.9	220.0
	Toi	210.5	200.0	200.0	200.0	211.7	202.1	201.7	200.0	200.0	200.0
Kayole	160.0	160.0	160.0	160.0	160.0	160.0	152.0	120.0	140.0	140.0	
Total		164.8	161.7	158.5	157.0	154.5	152.2	152.5	149.9	148.8	147.4

The total price is the average weighted prices depending on the number of markets and number of cycles per county.

.. Data not available

Table 10: Exports of Coffee and Tea

Descriptions/ Period	COFFEE *		TEA	
	Quantity (MT)	KSh Million	Quantity (MT)	KSh Million
2023				
October	1,704.74	1,268.72	45,359.87	16,111.63
November	1,694.58	1,357.99	49,507.33	17,767.98
December	1,478.34	1,225.70	46,524.90	17,283.71
2024				
January	2,685.80	2,112.12	51,187.58	18,267.60
February	2,745.22	2,134.13	59,043.65	20,429.82
March	4,291.32	3,349.81	59,599.15	19,070.04
April	5,370.52	3,926.59	56,263.44	17,337.26
May	4,732.90	3,613.65	51,575.28	15,610.13
June	5,800.46	4,124.43	42,894.74	11,752.08
July	6,990.51	4,935.89	54,305.88	15,518.53
August	5,728.78	3,710.28	50,821.46	14,713.16
September	5,013.51	3,378.43	51,935.51	14,395.84
October	3,391.68	2,346.14	44,652.10	12,514.52

Source: KRA Customs and Border Control Services department

* Coffee, not Roasted

MT denotes Metric tonnes

Table 11: Monthly Exports of Fresh Horticultural Produce

Descriptions/ Period	Cut Flowers				Fruits				Vegetables			
	2023		2024*		2023		2024*		2023		2024*	
	Quantity (MT)	Value (KSh Million)	Quantity (MT)	Value (KSh Million)	Quantity (MT)	Value (KSh Million)	Quantity (MT)	Value (KSh Million)	Quantity (MT)	Value (KSh Million)	Quantity (MT)	Value (KSh Million)
January	13,395.80	7,797.04	12,479.61	14,028.38	13,495.77	2,199.17	3,993.47	801.62	15,295.20	2,798.94	15,075.37	4,008.11
February	14,982.10	9,827.99	16,102.27	13,269.77	7,391.17	1,103.14	4,900.69	997.73	8,889.38	1,604.57	16,202.29	3,591.82
March	14,693.18	8,491.98	8,710.76	6,112.11	16,692.25	2,797.36	12,315.22	2,104.17	18,291.51	3,496.70	14,618.06	2,705.36
April	14,409.44	8,517.97	9,098.91	6,986.78	25,716.86	4,309.09	25,896.91	5,190.18	27,417.97	5,211.00	5,699.32	2,195.85
May	13,495.14	8,217.34	8,594.11	6,597.62	21,892.11	3,808.04	21,685.13	4,598.34	23,391.57	4,810.15	4,197.12	1,599.42
June	11,995.40	7,091.13	6,701.37	5,186.62	21,191.87	3,595.50	24,204.93	5,086.87	22,891.22	4,394.50	4,200.86	1,795.37
July	989.69	559.73	7,085.30	4,806.91	25,130.29	4,426.65	24,729.62	5,249.32	12,954.37	3,890.62	4,283.97	1,569.25
August	179.56	416.90	6,319.10	4,934.66	26,484.04	4,959.62	18,094.78	4,626.68	18,562.68	5,020.34	6,820.77	2,143.31
September	178.48	682.54	8,602.61	6,249.39	14,886.92	2,559.20	15,949.95	3,192.66	24,607.34	5,903.31	9,043.40	2,565.72
October	14,504.15	9,183.48	10,002.60	1,869.63	19,752.72	7,647.58
November	12,841.88	9,471.56			3,474.92	566.27			14,599.76	7,456.62		
December	4,684.61	3,199.79			1,699.50	248.89			4,777.58	1,362.95		
Total	116,349.43	73,457.46	83,694.04	68,172.25	188,058.30	32,442.56	151,770.70	31,847.58	211,431.30	53,597.28	80,141.15	22,174.20

Source: Agriculture and Food Authority; Horticultural Directorate

* Provisional

.. Data not available

Table 12: External Trade

KSh Million						
Descriptions/ Period	Domestic Exports	Re- Exports	Total Exports	Total Imports	Volume of Trade	Home use Imports
2023						
October	74,825.25	9,351.02	84,176.27	239,719.25	323,895.53	167,361.11
November	79,734.51	9,242.48	88,976.99	259,111.12	348,088.10	182,720.04
December	77,463.74	6,775.04	84,238.78	219,664.19	303,902.98	156,928.18
2024*						
January	79,668.56	12,007.06	91,675.62	244,573.36	336,248.98	176,246.21
February	89,806.12	17,616.68	107,422.81	226,412.35	333,835.16	161,567.92
March	84,404.65	13,528.72	97,933.36	208,228.95	306,162.32	151,579.56
April	74,711.21	18,211.92	92,923.13	236,210.91	329,134.04	173,826.77
May	75,452.77	19,029.65	94,482.42	212,570.44	307,052.86	160,349.70
June	71,945.71	15,208.34	87,154.05	208,614.25	295,768.31	149,836.22
July	80,488.50	16,553.69	97,042.19	226,054.51	323,096.70	167,210.79
August	79,637.12	13,722.03	93,359.14	226,509.40	319,868.54	170,728.10
September	76,599.24	14,426.92	91,026.16	219,412.67	310,438.83	169,409.66
October	69,935.66	18,395.68	88,331.34	244,515.12	332,846.46	186,280.52

Source: Kenya Revenue Authority

*Provisional

Table 13(a): Major Destinations of Domestic Exports

KSh Million											
Country/ Period	Uganda	Tanzania	United Kingdom	Pakistan	Netherlands	Egypt	Germany	Rwanda	USA	United Arab Emirates	France
2023											
October	8,977.67	5,885.79	4,892.75	6,616.23	5,169.42	3,393.54	899.36	3,320.52	3,962.36	3,270.07	1,354.20
November	8,977.13	5,156.02	4,446.20	8,083.01	5,295.88	2,669.36	934.59	3,417.50	3,907.14	3,777.48	1,119.22
December	8,750.62	4,915.65	5,100.03	7,271.38	5,856.17	2,445.03	926.56	3,009.71	5,312.57	5,976.27	1,205.25
2024*											
January	8,627.42	4,087.69	5,891.89	6,754.63	6,286.69	2,891.83	1,618.82	2,858.59	7,302.32	4,106.82	1,147.41
February	11,781.47	4,868.06	7,025.26	6,896.60	7,528.80	3,960.91	1,948.15	2,975.15	5,136.83	4,894.43	1,239.17
March	9,261.92	4,430.71	5,839.65	7,562.59	7,228.46	3,553.19	1,923.21	2,711.50	5,399.02	4,207.71	1,122.37
April	8,890.76	3,806.19	4,817.97	7,610.92	5,300.27	1,870.82	1,746.81	2,367.80	4,675.52	3,440.17	922.64
May	10,601.18	4,092.11	4,376.36	6,699.41	5,316.35	1,083.35	1,625.82	2,801.53	5,025.36	3,432.40	1,025.22
June	10,066.70	3,597.05	4,019.54	3,740.77	4,748.04	1,787.87	1,421.38	3,104.61	6,100.57	3,152.61	1,274.84
July	10,820.88	4,727.31	4,764.15	7,084.83	4,774.36	1,749.18	2,129.26	3,414.48	7,465.18	3,378.03	1,118.56
August	9,854.92	5,078.24	4,233.34	7,260.30	4,104.44	1,894.68	1,716.80	3,951.63	6,887.16	4,149.47	1,324.00
September	10,801.94	4,394.27	4,632.71	6,061.52	4,491.02	2,044.31	1,383.11	4,293.95	6,111.82	3,097.40	1,350.29
October	6,945.45	3,422.65	5,082.83	4,766.44	5,493.53	1,872.54	1,342.59	2,992.24	6,460.55	3,718.78	1,093.96

Source: Kenya Revenue Authority

*Provisional

Table 13(b): Domestic Exports by Broad Economic Category

KSh Million													
Descriptions/Period	2023			2024*									
	Oct	Nov	Dec	Jan	Feb	March	April	May	June	July	Aug	Sep	Oct
Food and beverages	34,161.24	34,319.77	33,645.68	36,194.79	39,784.55	40,020.28	35,758.62	33,377.02	29,653.78	36,358.14	34,473.46	33,697.14	29,294.02
Industrial supplies (Non-Food)	18,256.14	23,000.85	18,078.31	20,455.75	22,206.90	19,573.32	18,320.25	19,683.49	21,087.19	20,028.30	21,272.45	18,937.97	17,652.62
Fuel and Lubricants	1,091.32	1,126.96	4,092.53	984.15	1,360.58	1,355.31	1,286.08	1,334.72	1,159.57	1,230.37	1,420.38	1,376.27	1,136.55
Machinery & other capital Equipment	1,073.49	1,301.78	1,744.95	1,283.64	1,500.74	1,063.80	1,708.67	1,487.34	1,300.27	1,507.09	1,638.88	1,527.59	1,465.36
Transport equipment	391.56	343.63	731.20	574.16	602.94	371.11	224.62	359.46	402.23	776.74	896.37	837.26	403.46
Consumer goods Not elsewhere specified	19,843.91	19,555.93	19,166.44	20,157.74	24,344.09	21,999.86	17,410.92	19,198.51	18,331.48	20,568.98	19,920.40	20,219.52	19,960.56
Goods not elsewhere specified	7.58	85.59	4.64	18.32	6.32	20.97	2.07	12.24	12.24	18.87	15.19	3.48	23.09
Total	74,825.25	79,734.51	77,463.74	79,668.56	89,806.12	84,404.65	74,711.21	75,452.77	71,946.76	80,488.50	79,637.12	76,599.24	69,935.66
Percentage Shares:													
Food and Beverages	45.65	43.04	43.43	45.43	44.30	47.41	47.86	44.24	41.22	45.17	43.29	43.99	41.89
Industrial Supplies (Non-Food)	24.40	28.85	23.34	25.68	24.73	23.19	24.52	26.09	29.31	24.88	26.71	24.72	25.24
Fuel and Lubricants	1.46	1.41	5.28	1.24	1.52	1.61	1.72	1.77	1.61	1.53	1.78	1.80	1.63
Machinery and other Capital Equipment...	1.43	1.63	2.25	1.61	1.67	1.26	2.29	1.97	1.81	1.87	2.06	1.99	2.10
Transport Equipment	0.52	0.43	0.94	0.72	0.67	0.44	0.30	0.48	0.56	0.97	1.13	1.09	0.58
Consumer Goods not elsewhere specified	26.52	24.53	24.74	25.30	27.11	26.06	23.30	25.44	25.48	25.56	25.01	26.40	28.54
Goods not elsewhere specified	0.01	0.11	0.01	0.02	0.01	0.02	0.00	0.02	0.02	0.02	0.02	0.00	0.03
TOTAL	100.00	100.00	100.00	100.00	100.00	100.00	100.00	100.00	100.00	100.00	100.00	100.00	100.00

Source: Kenya Revenue Authority (KRA)

*Provisional

Table 14(a): Major Origins of Imports

KSh Million											
Country/ Period	United Arab Emirates	United Kingdom	South Africa	Saudi Arabia	Japan	India	USA	Germany	Netherlands	France	China
2023											
October	41,918.87	3,321.86	7,846.84	10,269.34	7,510.46	33,670.43	9,146.50	2,878.79	4,057.28	4,833.28	43,639.30
November	31,670.08	8,550.63	5,968.64	11,744.68	10,642.82	19,454.97	9,670.43	2,941.78	11,443.19	3,478.54	45,730.99
December	31,029.68	2,434.92	5,124.66	5,007.48	8,876.94	19,294.78	8,452.96	3,381.74	8,175.16	2,500.36	44,731.20
2024*											
January	21,541.70	2,492.73	12,130.15	3,222.45	9,417.36	28,605.38	16,744.97	2,847.59	1,877.49	1,845.96	44,722.23
February	23,931.98	3,629.20	5,112.02	1,770.65	9,768.12	25,214.84	13,447.09	4,051.98	9,743.13	1,749.10	45,375.38
March	21,558.14	2,955.08	4,656.81	2,321.57	8,273.44	18,185.30	10,924.71	3,031.36	8,366.45	2,663.32	35,978.73
April	24,458.57	3,119.48	5,450.21	7,550.45	9,545.79	20,393.74	17,897.28	3,064.55	7,700.44	2,458.92	42,532.73
May	36,935.83	6,997.96	5,797.15	2,644.96	8,820.97	16,119.16	11,403.12	3,869.03	2,097.29	3,176.54	46,978.94
June	29,507.96	4,069.22	3,842.15	2,597.84	8,438.16	21,221.88	7,721.67	3,192.81	2,018.71	2,320.69	42,112.93
July	28,548.50	3,404.78	4,383.87	4,270.99	9,326.06	19,597.44	10,232.43	3,363.00	3,285.08	2,988.58	59,670.08
August	31,011.70	3,071.55	2,795.87	2,068.31	8,521.08	26,115.02	11,073.06	6,928.91	1,810.44	2,753.04	57,204.18
September	29,256.69	3,888.73	6,572.64	2,877.91	8,748.66	18,836.09	11,288.08	3,263.42	2,655.31	1,845.27	53,397.49
October	34,671.94	3,825.39	6,706.39	8,062.84	9,444.54	22,354.65	25,247.93	3,258.19	1,779.21	3,809.26	52,924.00

Source: Kenya Revenue Authority

*Provisional

Table 14(b): Imports by Broad Economic Category

KSh Million													
Descriptions/Period	2023			2024*									
	Oct	Nov	Dec	Jan	Feb	Mar	Apr	May	June	July	Aug	Sep	Oct
Food and beverages	29,300.33	24,168.00	22,409.62	25,886.22	19,796.79	29,803.50	27,833.60	22,053.61	22,811.12	14,534.18	22,778.69	25,465.78	23,283.66
Industrial supplies (Non-Food)	76,772.56	80,897.85	77,568.19	86,102.43	76,035.29	72,488.28	79,440.33	71,938.77	72,809.35	81,520.35	69,801.92	77,113.78	80,501.50
Fuel and Lubricants	71,184.66	67,516.19	56,140.46	56,568.97	61,898.61	51,124.61	53,028.21	48,532.83	56,329.89	50,120.68	50,222.34	46,916.30	50,572.59
Machinery & other capital Equipment	29,477.64	34,710.76	27,295.85	27,056.61	28,272.66	23,677.84	32,828.14	31,210.97	24,177.13	35,013.41	29,628.57	31,947.45	32,701.33
Transport equipment	12,064.36	21,287.66	16,079.33	23,235.92	20,281.71	14,194.84	21,285.41	18,485.15	13,020.24	22,714.63	30,615.89	19,394.20	17,856.41
Consumer goods Not elsewhere specified	19,417.31	20,601.02	19,317.20	19,892.98	17,483.92	16,405.63	18,530.76	17,333.24	17,129.27	20,585.94	22,157.09	17,555.55	19,875.03
Goods not elsewhere specified	1,502.40	9,929.65	853.54	5,830.23	2,643.38	534.25	3,264.47	3,015.86	2,337.26	1,565.31	1,304.91	1,019.60	19,724.62
Total	239,719.25	259,111.12	219,664.19	244,573.36	226,412.35	208,228.95	236,210.91	212,570.44	208,614.25	226,054.51	226,509.40	219,412.67	244,515.12
Percentage Shares:													
Food and Beverages	12.22	9.33	10.20	10.58	8.74	14.31	11.78	10.37	10.93	6.43	10.06	11.61	9.52
Industrial Supplies (Non-Food)	32.03	31.22	35.31	35.21	33.58	34.81	33.63	33.84	34.90	36.06	30.82	35.15	32.92
Fuel and Lubricants	29.70	26.06	25.56	23.13	27.34	24.55	22.45	22.83	27.00	22.17	22.17	21.38	20.68
Machinery and other Capital Equipment..	12.30	13.40	12.43	11.06	12.49	11.37	13.90	14.68	11.59	15.49	13.08	14.56	13.37
Transport Equipment	5.03	8.22	7.32	9.50	8.96	6.82	9.01	8.70	6.24	10.05	13.52	8.84	7.30
Consumer Goods not elsewhere specified	8.10	7.95	8.79	8.13	7.72	7.88	7.85	8.15	8.21	9.11	9.78	8.00	8.13
Goods not elsewhere specified	0.63	3.83	0.39	2.38	1.17	0.26	1.38	1.42	1.12	0.69	0.58	0.46	8.07
TOTAL	100.00	100.00	100.00	100.00	100.00	100.00	100.00	100.00	100.00	100.00	100.00	100.00	100.00

Source: Kenya Revenue Authority

*Provisional

Table 14 (c): Mobile Money Transactions

Descriptions/ Period	Active Mobile money Agents	Mobile money subscriptions (millions)	Number of Transactions (millions) ¹	Transaction value (KSh billions) ²
2023				
October	333,291	75.96	210.62	703.28
November	327,928	77.12	201.31	707.55
December	322,404	77.26	213.31	788.35
2024*				
January	321,340	76.76	211.58	783.98
February	320,182	77.33	213.34	790.80
March	320,276	77.73	207.81	747.73
April	331,614	77.44	203.55	711.67
May	334,088	77.24	208.13	722.27
June	334,046	77.92	201.06	676.01
July	340,889	78.61	204.17	705.85
August	348,065	78.64	214.25	705.91
September	367,551	79.37	196.49	670.52
October	358,621	80.82	215.26	722.28

Source: Central Bank of Kenya

¹ Total agent cash in cash out

² Total agent cash in cash out

*Provisional

Table 14(d): International trade in ICT

Descriptions/Period	KSh Million												
	2023			2024*									
	Oct	Nov	Dec	Jan	Feb	Mar	Apr	May	Jun	Jul	Aug	Sep	Oct
Imports													
Office machines ¹	211.00	235.09	197.78	206.14	41.71	152.00	95.30	363.85	144.59	89.82	285.05	103.20	153.76
Automatic data processing machines, storage units etc	1,766.04	1,397.22	1,878.08	1,876.00	1,404.80	1,584.80	1,414.76	1,830.13	1,985.84	2,565.36	933.33	1,457.17	1,354.10
Part and accessories ²	72.51	167.16	91.45	92.11	115.36	68.15	47.53	102.54	182.93	65.95	136.54	101.99	78.46
Monitors and projectors and reception apparatus for television ³	801.56	777.49	762.17	338.03	576.42	730.71	508.27	1,096.88	794.35	1,019.35	919.82	680.06	902.88
Reception apparatus for radio broadcasting ⁴	21.88	14.63	19.74	14.51	12.41	15.30	12.50	22.13	12.69	17.36	7.92	21.80	22.55
Recording equipments ⁵	16.85	13.09	17.20	12.32	9.99	8.16	17.71	8.91	6.05	17.36	22.79	23.65	17.65
Telecommunications equipment ⁶	3,107.94	3,433.49	2,502.84	2,993.03	3,640.96	2,415.23	4,862.85	3,650.71	3,172.93	6,616.71	2,734.53	2,879.36	2,822.87
Exports													
Office machines ¹	1.34	4.30	4.06	1.09	3.73	2.95	1.08	15.73	4.02	36.46	8.40	7.31	28.99
Automatic data processing machines, storage units etc	23.20	130.61	108.01	14.24	67.26	22.70	21.91	42.16	186.38	32.09	32.35	46.97	46.50
Part and accessories ²	7.26	20.29	13.93	6.61	10.90	6.68	9.17	9.34	8.41	10.24	10.63	16.57	8.93
Monitors and projectors and reception apparatus for television ³	9.79	32.22	32.79	1.97	15.36	38.01	1.64	6.30	8.78	36.90	16.31	5.76	5.10
Reception apparatus for radio broadcasting ⁴	0.02	71.16	0.06	1.28	0.04	0.42	0.04	0.01	0.02	-	0.05	-	-
Recording equipments ⁵	-	1.85	0.02	0.02	0.06	35.06	0.36	0.20	-	0.04	0.12	129.22	64.80
Telecommunications equipment ⁶	75.96	167.42	156.64	57.09	24.66	77.11	78.75	88.81	48.16	255.97	119.30	364.13	97.61

Source: Kenya Revenue Authority (KRA)

¹ Electronic calculating machines, cash registers, accounting machines,

² For office machines and data processing machines

³ Include Television sets, decoders etc

⁴ Whether or not combined with sound recording or reproducing

⁵ Sound recording, video recording or reproducing apparatus including or

⁶ Such as computer, laptops, networking equipments etc plus their parts

and accessories such as telephone sets, microphones, electric sound

amplifier sets Television cameras, digital or video cameras recorders,

radio or tv transmission apparatus etc

- No data

*Provisional

Table 15(a): Local Electricity Generation by Source

Descriptions/ Period	KWh Million						Total
	Hydro	Geo - Thermal	Thermal ¹	Wind	Solar	Co- Generation	
2023							
January	185.20	524.82	107.32	203.31	46.69	0.02	1,067.36
February	112.91	472.15	142.35	190.65	42.85	-	960.91
March	125.98	509.36	166.86	152.35	40.59	-	995.14
April	190.85	476.33	119.53	157.00	39.41	-	983.12
May	237.88	510.83	95.38	181.72	44.28	-	1,070.09
June	257.94	504.57	68.13	168.06	36.66	-	1,035.36
July	279.48	494.81	108.29	198.46	37.90	0.04	1,118.98
August	258.71	522.92	89.58	186.66	40.85	0.02	1,098.74
September	247.20	511.88	130.18	141.30	39.25	0.03	1,069.84
October	205.28	509.54	140.57	183.36	42.87	0.01	1,081.62
November	287.58	495.19	67.93	159.76	35.69	-	1,046.15
December	273.64	497.69	69.55	85.50	44.44	-	970.83
2024*							
January	254.51	506.91	90.65	136.13	38.28	-	1,026.49
February	261.66	446.76	74.57	156.14	39.82	0.00	978.96
March	291.10	442.68	79.31	198.72	40.17	0.00	1,051.98
April	362.38	421.94	93.47	82.96	37.04	0.01	997.79
May	349.21	440.57	99.43	95.39	38.92	0.00	1,023.51
June	324.94	416.81	83.59	156.42	38.40	0.00	1,020.15
July	358.23	471.83	102.77	134.71	31.34	0.00	1,098.89
August	320.88	483.33	99.49	158.06	34.44	0.00	1,096.21
September	270.96	455.23	92.30	190.61	36.42	0.00	1,045.51
October	276.60	493.29	110.59	182.34	40.66	0.00	1,103.49

Source: Kenya Power

*Provisional

¹ Includes all offgrid power

- No data

Figure 7: Electricity Generation by Source

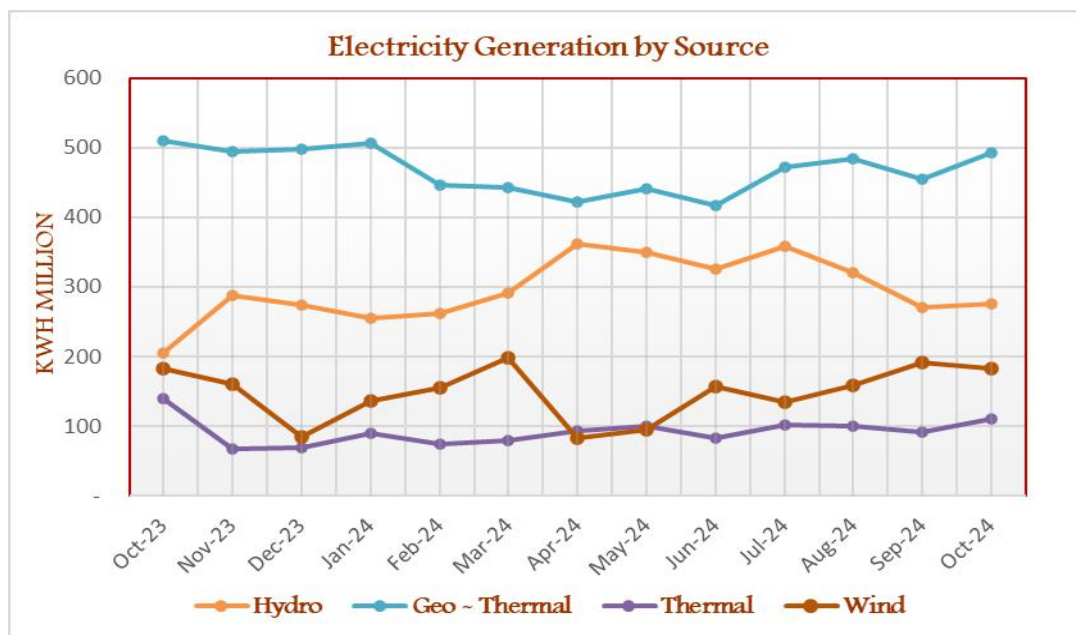


Table 15(b): Generation and Consumption of Electricity

Million KWh									
Descriptions/ Period	Generation and imports					Consumption and Exports			
	Local Generation	Uganda	Ethiopia	Total Imports	Total (Generation and Imports)	Total KPLC Sales	Uganda	Total Exports	
2023									
January	1,067.36	28.75	39.73	68.48	1,135.84	870.84	1.83	1.83	
February	960.91	18.76	65.52	84.28	1,045.19	828.70	2.51	2.51	
March	995.14	22.50	113.04	135.54	1,130.68	847.47	2.58	2.58	
April	983.12	24.17	70.50	94.67	1,077.79	844.34	1.89	1.89	
May	1,070.09	25.80	33.93	59.73	1,129.82	873.24	1.55	1.55	
June	1,035.36	21.25	34.72	55.97	1,091.33	850.53	2.31	2.31	
July	1,118.98	19.23	20.64	39.87	1,158.85	881.01	2.91	2.91	
August	1,098.74	14.85	40.62	55.48	1,154.22	885.17	4.45	4.45	
September	1,069.84	10.68	39.25	49.93	1,119.77	874.35	4.92	4.92	
October	1,081.62	26.54	40.48	67.02	1,148.64	877.48	2.05	2.05	
November	1,046.15	20.06	48.07	68.13	1,114.28	859.43	2.79	2.79	
December	970.83	17.13	121.57	138.70	1,109.52	828.34	4.01	4.01	
2024*									
January	1,026.49	20.29	121.96	142.25	1,168.73	881.37	3.41	3.41	
February	978.96	18.13	113.35	131.48	1,110.44	854.01	3.38	3.38	
March	1,051.98	17.43	110.97	128.40	1,180.38	878.93	3.86	3.86	
April	997.79	17.99	110.91	128.90	1,126.69	883.02	3.50	3.50	
May	1,023.52	16.38	112.49	128.86	1,152.38	892.43	3.89	3.89	
June	1,020.15	15.85	102.58	118.43	1,138.59	875.26	4.04	4.04	
July	1,098.89	16.50	89.51	106.01	1,204.90	901.78	3.69	3.69	
August	1,096.21	21.50	109.61	131.11	1,227.32	923.13	2.74	2.74	
September	1,045.51	16.50	105.90	122.40	1,167.91	905.39	3.72	3.72	
October	1,103.49	20.23	109.88	130.11	1,233.59	934.54	3.10	3.10	

Source: Kenya Power

*Provisional

Table 15(c): Consumption of Petroleum Fuels

	'000 MT							
Descriptions/ Period	AGO (Light Diesel Oil)	Jet	Fuel Oil	Motor Spirit	Illuminating Kerosene	IDO (Heavy Diesel Oil)	LPG	Aviation Gasoline
2023								
January	178.96	53.08	29.19	126.65	6.55	0.00	28.46	0.08
February	173.69	51.77	34.30	118.78	6.13	0.00	25.75	0.39
March	195.67	54.41	58.99	131.40	6.06	0.00	28.10	0.10
April	170.15	51.12	33.54	115.88	4.87	0.00	27.99	0.05
May	188.22	55.03	42.43	127.95	5.23	1.32	31.06	0.08
June	187.86	51.93	18.08	121.34	5.37	0.00	25.72	0.10
July	170.77	58.89	17.48	112.64	4.27	0.00	34.62	0.09
August	200.67	61.67	30.68	129.69	4.12	0.00	33.02	0.09
September	186.18	57.76	30.39	117.40	3.65	0.00	31.90	0.09
October	180.67	53.68	32.90	113.99	3.27	0.00	30.22	0.08
November	164.25	51.62	20.22	114.59	2.58	0.00	31.89	0.06
December	166.46	60.14	26.33	127.57	2.52	0.00	31.86	0.09
2024*								
January	177.10	60.91	17.38	123.17	3.15	0.00	32.45	0.06
February	178.65	59.99	18.73	114.16	2.83	0.00	28.07	0.11
March	191.86	57.55	14.15	120.07	2.51	0.00	33.66	0.06
April	170.42	59.57	22.64	113.73	3.36	0.00	31.80	0.04
May	182.42	59.80	24.97	117.91	3.22	0.00	36.17	0.08
June	165.78	60.61	13.07	106.84	3.11	0.00	33.30	0.07
July	192.18	64.78	21.63	126.09	3.39	0.00	37.35	0.09
August	195.49	57.84	28.88	128.32	3.44	0.00	38.27	0.07
September	185.08	61.85	17.85	123.68	2.88	0.00	..	0.08
October

Source: Ministry of Energy and Petroleum and Energy & Petroleum Regulatory Authority (EPRA)

MT: Denotes Metric Tonnes

*Provisional

.. Data not available

Table 15(d): Average Retail Prices for Selected Fuel Products within Nairobi

KSh per litre			
Period/Descriptions	Motor Gasoline Premium	Light Diesel Oil (Gasoil)	Illuminating Kerosene
2023			
January	177.30	162.00	145.94
February	177.30	162.00	145.94
March	179.30	162.00	145.94
April	179.30	162.00	145.94
May	182.70	168.40	161.13
June	182.04	167.28	161.48
July	194.68	179.67	169.48
August	194.68	179.67	169.48
September	211.64	200.99	202.61
October	217.36	205.47	205.06
November	217.36	203.47	203.06
December	212.36	201.47	199.05
2024			
January	207.36	196.47	194.23
February	206.36	195.47	193.23
March	199.15	190.38	188.74
April	193.84	180.38	170.06
May	192.84	179.18	168.76
June	189.84	173.10	163.05
July	188.84	171.60	161.75
August	188.84	171.60	161.75
September	188.84	171.60	158.32
October	180.66	168.06	151.39

Source: Ministry of Energy and Petroleum and Energy & Petroleum Regulatory Authority (EPRA)

Table 15(e): Average Retail Prices for Selected Fuels in Kenya (National Average Retail Prices)

KSh					
Descriptions/ Period	Motor Gasoline Premium (KSh per Litre)	Light Diesel Oil (KSh per Litre)	Illuminating Kerosene (KSh per Litre)	L.P.G (KSh per 13 Kg)	Charcoal (KSh per Kg)
2023					
January	178.05	162.91	146.86	2,961.93	68.11
February	178.05	162.91	146.86	3,101.94	68.43
March	180.05	162.91	146.86	3,137.70	69.50
April	180.05	162.91	146.86	3,135.39	70.01
May	183.29	169.10	161.83	3,125.40	70.47
June	182.63	167.98	162.19	3,069.01	71.03
July	195.32	180.42	170.25	2,787.83	70.95
August	195.32	180.42	170.25	2,709.07	70.73
September	212.25	201.73	203.34	2,795.69	71.66
October	217.97	206.21	205.79	3,000.04	72.56
November	217.97	204.21	203.79	3,031.82	73.83
December	212.97	202.21	199.78	3,032.62	75.65
2024					
January	207.97	197.21	194.96	3,055.51	76.89
February	206.97	196.21	193.96	3,187.10	77.46
March	199.77	191.11	189.48	3,231.84	78.64
April	194.46	181.11	171.18	3,242.11	79.50
May	193.46	179.91	169.52	3,221.29	82.32
June	190.46	173.83	163.82	3,213.97	83.80
July	189.46	172.33	162.52	3,219.58	84.41
August	189.46	172.33	162.52	3,217.85	84.17
September	189.46	172.33	159.10	3,196.04	85.32
October	181.33	168.82	152.18	3,183.29	85.26

Source: Ministry of Energy and Petroleum and Energy & Petroleum Regulatory Authority (EPRA)

Figure 8: Average Prices for Liquefied Petroleum Gas in Kenya per 13 Kg cylinder



Table 15(f): OPEC Reference basket Prices

Period	US\$/ BBL				
	2020	2021	2022	2023	2024
January	66.09	54.38	85.41	81.62	80.04
February	55.53	61.05	93.95	81.88	81.23
March	33.92	64.56	113.48	78.45	84.22
April	17.66	63.24	105.64	84.13	89.12
May	25.17	66.91	113.87	75.82	83.59
June	37.05	71.89	117.72	75.19	83.22
July	43.42	73.53	108.55	81.06	84.43
August	45.19	70.33	101.90	87.33	78.41
September	41.54	73.88	95.32	94.60	73.59
October	40.08	82.11	93.62	91.78	74.45
November	42.61	80.37	89.73	84.92	
December	49.17	74.38	79.61	79.00	

Source: Monthly Oil Market report OPEC

US\$/BBL: US Dollar per Barrel

* As from Feb 2020 all prices published will refer to the OPEC reference basket prices

* As from Feb 2020 all prices published are crude spot prices on the 20th of the reference month

*As of 6 March 2020: The basket price excludes the Ecuadorean crude "Oriente".

*As of January 2022: The basket price includes Iraqi Basrah Medium instead of Basrah Light.

*As of January 2024: The basket price excludes the Angolan crude "Girassol".

Table 16: Value of Building Plans Approved for Nairobi City County

Descriptions/ Period	KSh Million					
	Actual Value of Buildings			Real *		
	Residential	Non Residential	Total	Residential	Non Residential	Total
2023						
October	13,649.33	4,397.46	18,046.80	12,137.06	3,910.24	16,047.30
November	13,955.20	2,210.70	16,165.90	12,409.04	1,965.77	14,374.80
December	21,436.80	3,476.92	24,913.72	19,061.71	3,091.70	22,153.41
2024						
January	11,620.65	2,400.55	14,021.19	10,333.14	2,134.58	12,467.72
February	12,606.70	3,627.33	16,234.02	11,209.94	3,225.44	14,435.38
March	11,579.64	2,035.64	13,615.28	10,296.68	1,810.10	12,106.78
April	13,839.46	2,557.49	16,396.95	12,306.12	2,274.14	14,580.26
May	20,004.87	3,365.90	23,370.77	17,168.61	2,888.68	20,057.29
June	25,262.26	4,016.59	29,278.85	21,680.62	3,447.12	25,127.74
July	12,162.57	5,232.25	17,394.81	10,815.02	4,652.54	15,467.56
August	15,747.61	2,456.56	18,204.16	14,002.85	2,184.38	16,187.23
September	25,052.97	2,221.35	27,274.32	22,277.23	1,975.24	24,252.47
October	7,267.67	3,332.34	10,600.01	6,462.45	2,963.14	9,425.59

Source; Nairobi City County

* Actual deflated by new Construction Input Price Indices beginning June 2021

Table 17(a): Domestic Production of Sugar

Period	Metric tonnes				
	2020	2021	2022	2023	2024*
January	53,155	58,368	64,839	81,648	60,680
February	51,083	61,508	64,191	67,486	63,075
March	52,699	66,326	79,438	49,761	69,657
April	45,468	58,444	68,483	31,971	59,263
May	46,350	57,651	63,209	31,495	56,271
June	49,680	59,226	70,376	34,072	75,500
July	53,155	57,276	70,278	33,246	83,849
August	53,434	64,244	46,460	27,680	73,386
September	54,873	45,348	61,477	16,760	73,818
October	54,830	49,869	76,533	24,597	72,908
November	50,227	59,467	67,990	25,179	
December	38,834	62,514	63,279	48,877	
Total	603,788	700,241	796,554	472,773	688,407

Source: Agriculture and Food Authority ; Sugar Directorate

* Provisional

Figure 9: Sugar Production

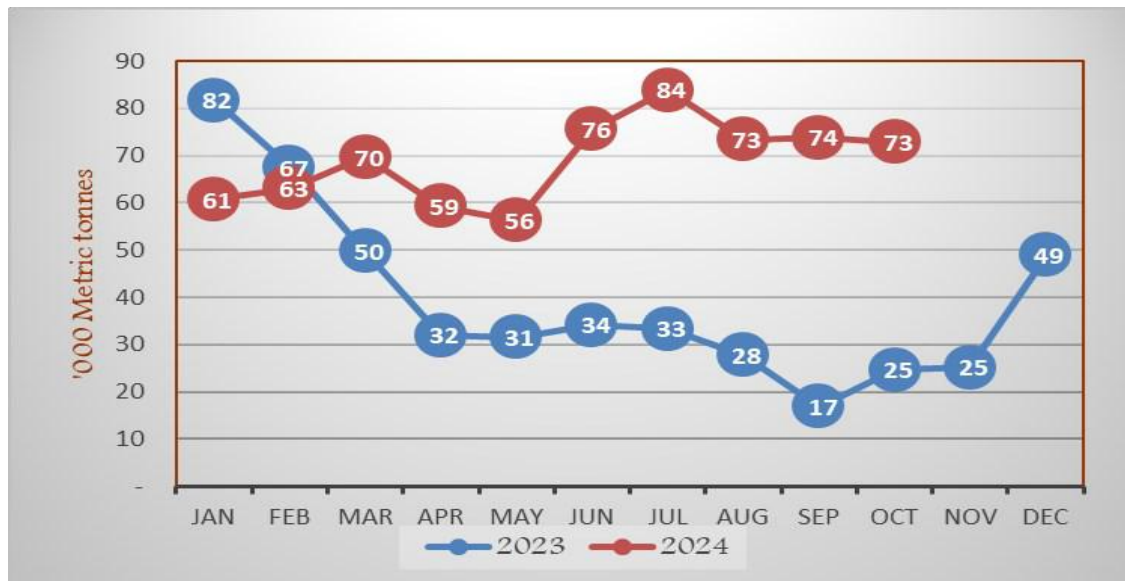


Table 17(b): Production of Soft Drinks

Period	'000 Litres				
	2020	2021	2022	2023	2024*
January	52,654	50,153	46,537	52,601	47,053
February	42,072	42,749	44,407	47,725	43,440
March	52,109	53,157	61,898	56,068	56,569
April	35,951	43,742	45,868	40,193	53,876
May	34,129	38,327	44,289	36,189	60,057
June	47,273	46,518	45,640	41,736	40,365
July	39,833	33,864	35,855	33,155	40,728
August	39,290	42,744	38,842	38,047	64,534
September	52,436	53,923	50,841	58,002	60,570
October	47,215	52,394	50,393	48,795	65,333
November	42,916	55,226	52,323	51,948	
December	64,707	57,993	62,609	68,483	
Total	550,585	570,792	579,502	572,942	532,525

* *provisional*

Table 17(c): Production of Assembled Vehicles

Period	Numbers				
	2020	2021	2022	2023	2024*
January	614	560	925	1,135	844
February	861	565	1,263	980	1,054
March	830	705	1,245	1,214	1,107
April	669	737	1,348	972	778
May	659	609	1,483	1,258	918
June	415	576	1,186	1,123	1,077
July	735	798	1,246	832	1,194
August	595	962	1,036	1,181	1,007
September	591	1,173	1,320	1,262	1,061
October	676	1,138	1,004	1,049	978
November	533	968	798	1,387	
December	547	1,198	619	1,134	
Total	7,725	9,989	13,473	13,527	10,018

* *Provisional*

Table 17(d): Production of Galvanized Sheets

Period	Metric Tonnes				
	2020	2021	2022	2023	2024*
January	23,397	18,631	21,546	17,350	21,544
February	21,989	20,762	21,671	22,457	23,112
March	18,527	21,781	19,616	22,373	23,801
April	6,259	21,572	19,479	21,404	25,185
May	18,042	21,165	23,383	23,555	21,653
June	23,730	22,365	22,073	21,100	22,527
July	24,493	20,432	20,895	24,337	21,939
August	23,226	19,744	17,064	23,943	25,230
September	20,801	17,581	21,833	23,443	22,773
October	22,868	20,111	19,951	24,178	24,905
November	23,268	25,926	20,589	23,847	
December	20,854	20,348	17,686	24,555	
Total	247,455	250,418	245,788	272,541	232,670

* Provisional

Table 17(e): Cement Production and Consumption

Descriptions/ Period	Metric Tonnes					
	2022		2023		2024*	
	Production	Consumption	Production	Consumption	Production	Consumption
January	855,883	845,087	785,773	746,930	672,899	631,803
February	818,496	798,007	724,164	696,436	713,472	655,255
March	911,250	877,874	820,772	790,844	708,989	655,818
April	842,239	819,889	745,106	718,119	688,163	653,522
May	752,698	717,566	786,702	745,702	660,026	632,906
June	773,153	745,289	794,700	763,758	692,240	670,641
July	804,401	778,142	844,237	803,562	733,331	719,921
August	745,559	717,267	872,135	833,772	780,613	763,711
September	829,930	799,592	834,651	802,414	728,501	713,062
October	824,474	800,673	836,384	789,900
November	821,768	797,912	756,055	728,725		
December	774,124	752,852	715,003	681,255		
TOTAL	9,753,972	9,450,150	9,515,676	9,101,419	6,378,232	6,096,640

*Provisional

.. Data not available

Table 17(f): Milk Intakes in the Formal Sector

Period	Million Litres				
	2020	2021	2022	2023	2024*
January	63.39	63.80	69.36	62.09	74.58
February	53.88	64.62	66.42	52.21	71.76
March	56.09	62.79	61.76	52.19	70.31
April	48.61	53.32	61.78	59.49	66.89
May	49.36	77.33	64.29	73.78	76.41
June	53.24	74.07	65.69	71.69	77.81
July	54.31	69.49	61.23	71.23	74.40
August	59.31	67.75	59.12	71.48	74.21
September	58.04	72.04	66.62	67.71	75.52
October	59.71	66.59	60.51	74.67	80.32
November	60.58	65.22	58.31	74.33	
December	65.80	64.89	59.27	75.69	
Total	682.33	801.91	754.35	806.56	742.20

Source: Kenya Dairy Board

* Provisional

Figure 10: Milk Intake in the Formal Sector

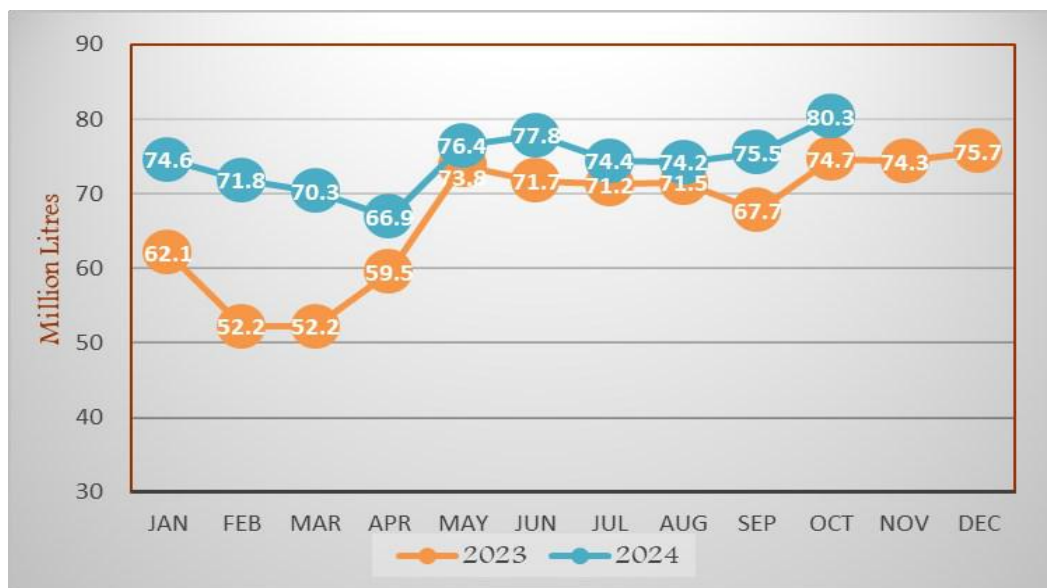


Table 18: Visitor Arrivals through JKIA and MIA

Descriptions/ Period	AIRPORT		Numbers ¹
	JKIA	MIA	Total
2023			
January	112,927	15,845	128,772
February	107,998	15,062	123,060
March	104,799	13,939	118,738
April	92,492	7,571	100,063
May	101,105	5,760	106,865
June	133,509	8,081	141,590
July	155,758	12,607	168,365
August	155,359	16,701	172,060
September	133,400	12,277	145,677
October	128,399	13,843	142,242
November	118,424	15,182	133,606
December	134,226	20,057	154,283
2024*			
January	110,186	24,479	134,665
February	123,046	23,396	146,442
March	110,323	17,734	128,057
April	96,949	6,413	103,362
May	111,925	5,714	117,639
June	140,617	9,305	149,922
July	153,961	15,761	169,722
August	155,291	19,822	175,113
September	129,625	15,371	144,996
October

¹ Visitor arrivals exclude Kenyans

* Provisional

.. Data not available

Figure 11: Visitor Arrivals through JKIA and MIA

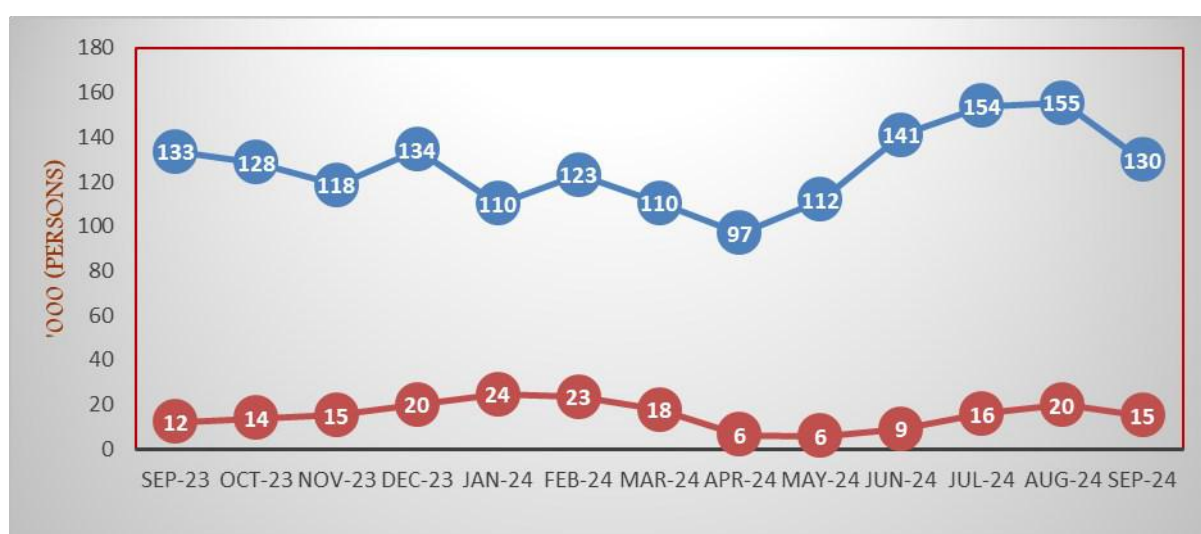


Table 19(a): Jomo Kenyatta international Airport-Embarked Passengers by Port of Destination

Ports/Period	2023			2024*										Number
	Oct	Nov	Dec	Jan	Feb	Mar	Apr	May	Jun	Jul	Aug	Sep	Oct	
Amsterdam	15,304	15,308	13,690	16,022	15,513	15,617	14,089	13,392	13,770	13,939	17,459	
Frankfurt	6,873	7,234	7,352	7,598	6,847	6,948	6,198	4,942	5,306	5,423	5,802	
London	20,474	20,200	18,377	23,547	20,820	19,736	15,127	14,021	14,409	17,049	17,274	
Paris	14,099	14,821	14,710	13,438	13,130	13,571	12,911	15,077	13,930	20,988	23,303	
Istanbul	5,464	5,279	5,961	7,129	6,332	6,143	5,578	4,650	5,067	6,060	7,124	
Brussels	0	0	0	0	0	0	0	0	5,638	6,750	8,113	
Other Europe	21	16	23	14	35	379	25	5	362	22	45	
Total Europe	62,235	62,858	60,113	67,748	62,677	62,394	53,928	52,087	58,482	70,231	79,120	
New York	4,018	4,342	5,971	7,018	4,827	4,706	5,758	6,457	7,427	9,716	9,923	
Other North America	0	0	0	5	0	0	0	0	0	0	0	
Total North America	4,018	4,342	5,971	7,023	4,827	4,706	5,758	6,457	7,427	9,716	9,923	
Dubai	24,162	21,104	26,892	24,564	23,354	23,410	19,725	18,776	23,116	28,006	31,962	
Jeddah	4,277	4,009	5,088	4,672	3,998	5,387	2,986	3,431	3,855	5,007	5,739	
Other Middle East	23,510	20,082	21,599	23,769	23,102	24,092	21,589	24,103	23,834	25,526	27,817	
Total Middle East	51,949	45,195	53,579	53,005	50,454	52,889	44,300	46,310	50,805	58,539	65,518	
Mumbai	11,039	11,575	12,880	10,488	8,845	9,330	9,036	9,659	12,888	13,164	12,598	
Bangkok	0	870	3,738	3,874	1,977	3,054	4,412	3,309	3,402	4,203	4,729	
Other Far East	7,306	5,930	4,948	5,274	5,026	4,955	4,379	5,055	5,604	7,495	8,069	
Total Far East	18,345	18,375	21,566	19,636	15,848	17,339	17,827	18,023	21,894	24,862	25,396	
Addis Ababa	16,393	14,928	15,045	15,721	15,519	15,493	15,894	17,034	16,831	16,226	19,936	
Bujumbura	2,223	2,087	2,679	1,986	2,025	2,334	1,925	2,375	2,422	2,790	2,526	
Dar-es-alaam	11,948	11,496	11,652	9,100	9,949	9,433	10,015	10,763	11,335	13,253	12,708	
Entebbe	14,857	15,268	15,602	14,353	12,463	13,230	14,142	16,363	16,089	14,980	15,067	
Kigali	10,368	9,801	11,292	9,648	8,623	9,770	9,086	9,910	9,611	12,002	13,798	
Kinshasa	2,835	3,016	2,111	2,826	2,134	2,780	2,850	2,097	2,185	2,793	3,866	
Other East & Central Africa	18,869	18,143	17,118	18,360	17,775	16,414	17,742	20,816	22,737	24,216	24,800	
Total East & Central Africa	77,493	74,739	75,499	71,994	68,488	69,454	71,654	79,358	81,210	86,260	92,701	
Mauritius	0	0	0	0	0	0	0	0	0	0	0	
Seychelles	1,378	1,292	1,112	1,139	1,104	1,444	1,282	1,201	1,342	1,670	1,408	
Zanzibar	7,543	5,480	7,422	6,218	6,420	5,146	3,613	4,157	7,689	8,551	8,812	
Other Indian Ocean Islands	5,608	5,512	5,136	5,809	4,204	6,164	4,563	5,823	6,082	6,946	5,808	
Total Indian Ocean Islands	14,529	12,284	13,670	13,166	11,728	12,754	9,458	11,181	15,113	17,167	16,028	
Abidjan	1,657	1,738	1,728	2,045	1,312	1,580	1,352	1,976	1,966	1,726	1,879	
Douala	868	995	1,306	783	678	412	326	378	0	150	735	
Lagos	3,899	4,940	5,147	4,158	3,444	3,960	4,166	4,163	4,932	4,122	4,356	
Accra	4,881	4,800	4,745	4,592	3,916	5,006	4,730	4,569	5,011	4,817	4,973	
Other West Africa	593	706	796	471	496	482	602	681	801	367	618	
Total West Africa	11,898	13,179	13,722	12,049	9,846	11,440	11,176	11,767	12,710	11,182	12,561	
Johannesburg	16,065	14,674	15,846	16,044	13,071	14,083	13,931	14,156	14,671	17,507	14,665	
Harare	2,236	2,280	2,502	1,777	1,809	2,100	2,229	1,891	1,857	2,202	1,920	
Lilongwe	3,478	3,131	3,721	3,163	2,822	3,694	3,283	3,092	4,023	3,894	4,214	
Lusaka	4,395	5,328	4,616	3,987	3,122	4,114	3,959	4,137	3,917	4,180	4,661	
Cape Town	2,095	1,522	2,055	1,996	2,023	2,199	1,688	1,650	1,433	1,951	1,898	
Other South Africa	2,183	2,481	2,009	2,308	2,111	2,177	1,987	1,383	2,064	2,775	2,791	
Total Southern Africa	30,452	29,416	30,749	29,275	24,958	28,367	27,077	26,309	27,965	32,509	30,149	
Cairo	3,367	3,024	2,916	3,005	3,319	3,347	2,922	3,115	3,329	3,275	4,323	
Khartoum	114	195	22	158	117	126	239	133	169	16	214	
Juba	4,171	5,145	4,466	5,698	4,142	3,920	4,326	4,355	3,828	4,242	4,167	
Other North Africa	0	0	7	0	3	0	35	17	0	0	8	
Total North Africa	7,652	8,364	7,411	8,861	7,581	7,393	7,522	7,620	7,326	7,533	8,712	
Other International	166	161	170	50	118	157	27	192	172	347	148	
Total International	278,737	268,913	282,450	282,807	256,525	266,893	248,727	259,304	283,104	318,346	340,256	

Source: Kenya Airports Authority

*Provisional

.. Data not available

Table 19(b): Jomo Kenyatta international Airport- Landed Passengers by Port of Origin

Ports/Period	2023			2024*										Number	
	Oct	Nov	Dec	Jan	Feb	Mar	Apr	May	Jun	Jul	Aug	Sep	Oct		
Amsterdam	16,003	15,896	16,749	15,842	16,022	14,912	11,755	12,968	16,074	16,432	15,386		
Frankfurt	7,044	6,505	7,431	6,185	6,008	5,149	4,145	4,185	5,326	5,568	5,119		
London	19,290	17,913	20,728	19,116	18,522	16,876	11,999	13,289	14,840	17,166	15,660		
Paris	14,910	13,437	15,059	13,396	12,542	11,542	11,146	13,228	14,337	17,375	15,474		
Istanbul	6,132	6,075	8,264	6,846	6,203	5,587	4,170	4,112	6,039	6,960	6,740		
Brussels	0	0	0	0	0	0	0	0	3,811	6,331	6,134		
Other Europe	100	19	38	184	183	16	33	3	32	513	219		
Total Europe	63,479	59,845	68,269	61,569	59,480	54,082	43,248	47,785	60,459	70,345	64,732		
New York	4,109	4,274	6,064	5,711	4,356	3,885	4,731	6,411	8,029	8,499	7,884		
Other North America	0	0	0	0	0	0	0	0	0	0	0		
Total North America	4,109	4,274	6,064	5,711	4,356	3,885	4,731	6,411	8,029	8,499	7,884		
Dubai	20,975	19,758	26,948	23,313	18,704	19,729	19,658	19,024	26,555	31,166	29,419		
Jeddah	3,273	3,759	4,537	5,312	3,026	2,287	4,801	3,425	3,897	5,944	5,449		
Other Middle East	21,614	18,631	25,380	21,058	20,033	20,377	22,009	22,393	26,468	26,674	26,243		
Total Middle East	45,862	42,148	56,865	49,683	41,763	42,393	46,468	44,842	56,920	63,784	61,111		
Mumbai	9,266	8,449	9,940	12,377	9,747	9,401	11,026	11,991	11,840	12,635	12,881		
Bangkok	0	359	4,136	3,660	2,007	3,356	4,024	4,857	4,177	4,756	4,340		
Other Far East	6,538	6,478	4,252	5,361	4,753	5,398	4,847	5,941	5,563	7,955	8,226		
Total Far East	15,804	15,286	18,328	21,398	16,507	18,155	19,897	22,789	21,580	25,346	25,447		
Addis Ababa	15,453	14,887	17,495	14,666	17,523	16,539	15,699	16,758	18,080	18,814	19,386		
Bujumbura	2,323	2,106	2,269	2,335	2,111	2,371	2,107	2,429	2,337	2,850	2,945		
Dar-es-alaam	11,474	11,245	11,568	9,641	9,566	9,456	10,096	9,490	10,069	11,200	13,298		
Entebbe	16,373	15,985	15,912	14,686	14,652	15,611	14,258	15,352	15,722	16,527	17,412		
Kigali	9,448	9,080	11,308	8,465	8,124	8,964	8,985	9,555	12,621	11,170	13,408		
Kinshasa	3,081	3,023	2,802	2,128	2,271	2,863	3,157	1,750	2,398	3,144	3,332		
Other East & Central Africa	18,986	18,384	17,810	16,585	18,905	17,830	16,523	19,039	20,349	22,864	24,189		
Total East & Central Africa	77,138	74,710	79,164	68,506	73,152	73,634	70,825	74,373	81,576	86,569	93,970		
Mauritius	0	0	0	0	0	0	0	0	0	0	0		
Seychelles	1,356	1,319	1,352	1,129	989	1,180	1,499	1,319	1,244	1,162	1,215		
Zanzibar	11,455	7,933	8,185	8,704	9,577	7,746	4,555	4,964	8,380	11,664	13,777		
Other Indian Ocean Islands	6,045	7,362	8,079	5,166	4,905	4,792	5,141	5,836	5,127	11,476	13,702		
Total Indian Ocean Islands	18,856	16,614	17,616	14,999	15,471	13,718	11,195	12,119	14,751	24,302	28,694		
Abidjan	1,824	1,692	1,633	1,368	1,696	1,458	1,344	1,966	1,553	1,720	1,788		
Douala	1,043	1,082	1,199	1,079	896	483	407	806	732	912	920		
Lagos	4,323	4,763	4,675	4,807	3,747	3,929	4,098	4,191	4,558	4,510	3,998		
Accra	5,089	4,597	4,394	4,551	4,327	4,874	4,769	4,837	5,098	5,501	5,294		
Other West Africa	749	850	630	349	608	485	373	815	560	613	609		
Total West Africa	13,028	12,984	12,531	12,154	11,274	11,229	10,991	12,615	12,501	13,256	12,609		
Johannesburg	15,060	14,876	19,531	13,790	12,667	13,840	14,181	14,646	17,900	13,559	15,584		
Harare	2,974	3,049	4,331	2,736	2,616	2,696	3,228	3,259	3,110	2,792	3,573		
Lilongwe	1,157	1,168	1,928	1,162	874	1,284	1,594	1,320	1,992	1,880	3,125		
Lusaka	3,554	4,388	3,495	2,758	2,356	2,814	3,385	2,908	2,875	2,850	3,093		
Cape Town	1,573	1,436	2,152	1,755	1,911	2,060	1,578	1,652	1,976	1,175	2,235		
Other South Africa	4,495	4,527	5,234	4,302	3,611	4,108	4,149	4,443	4,590	4,622	4,151		
Total Southern Africa	28,813	29,444	36,671	26,503	24,035	26,802	28,115	28,228	32,443	26,878	31,761		
Cairo	3,657	3,660	3,959	3,707	3,307	2,742	3,259	3,982	4,004	4,067	4,158		
Khartoum	133	109	79	121	237	186	193	217	221	0	140		
Juba	4,336	4,394	6,811	4,600	4,113	4,772	4,569	4,457	4,221	4,077	4,760		
Other North Africa	0	0	5	2	8	0	12	19	3	0	10		
Total North Africa	8,126	8,163	10,854	8,430	7,665	7,700	8,033	8,675	8,449	8,144	9,068		
Other International	208	217	214	50	14	18	29	39	99	378	187		
Total International	275,423	263,685	306,576	269,003	253,717	251,616	243,532	257,876	296,807	327,501	335,463		

Source: Kenya Airports Authority

*Provisional

.. Data not available

Table 19(c): New Registration of Road Motor Vehicles and Motorcycles by Type

Body Type/Period	Number												
	2023			2024*									
	Oct	Nov	Dec	Jan	Feb	Mar	Apr	May	Jun	Jul	Aug	Sep	Oct
Saloons	426	433	393	720	515	478	276	421	358	442	290
Station Wagons	4,065	4,128	3,649	8,446	5,957	5,909	3,320	4,845	4,142	4,952	3,453
Vans	623	516	403	358	304	396	163	184	164	217	272
Pick Ups	453	269	226	320	320	267	202	304	237	345	80
Mini Buses	140	162	79	165	196	145	46	109	96	111	57
Buses	282	170	255	102	130	170	80	136	97	124	79
Lorries	1,038	1,102	687	499	682	652	407	373	356	391	296
Trailers	548	497	424	127	336	359	213	55	-	-	-
Motor Cycles	4,690	3,472	3,223	8,468	8,561	6,509	4,772	3,787	6,683	6,060	4,292
Three Wheelers	408	462	265	1	647	445	322	167	280	328	398
Wheeled Tractors	100	215	98	67	84	84	50	48	41	29	36
Others	921	791	647	438	777	570	395	464	481	500	635
Totals	13,694	12,217	10,349	19,711	18,509	15,984	10,246	10,893	12,935	13,499	9,888

Source: National Transport and Safety Authority

* Provisional

.. Data not available

Table 19(d): Passenger and Cargo Movement on the Standard Gauge Railway

Descriptions/ Period	PASSENGER				FREIGHT			
	2023		2024*		2023		2024*	
	No. Passengers	Revenue (KSh)	No. Passengers	Revenue (KSh)	Tonnage	Revenue (KSh) ¹	Tonnage	Revenue (KSh) ¹
January	247,011	261,959,811	192,376	312,443,190	543,189	1,107,569,456	511,240	1,287,415,699
February	163,016	185,441,748	158,652	270,396,935	493,583	923,073,763	342,867	981,146,545
March	187,479	212,753,724	180,645	297,978,910	541,125	1,126,004,560	449,200	976,099,344
April	239,685	251,428,757	241,664	385,335,205	503,077	1,090,933,128	565,312	1,178,827,369
May	214,050	234,581,352	168,525	279,275,780	551,055	1,276,575,680	615,636	1,273,798,341
June	198,564	224,413,327	186,920	306,995,535	550,068	1,136,597,321	562,376	1,007,356,946
July	216,113	287,368,189	192,768	319,120,339	574,867	1,003,638,397	625,419	1,273,012,684
August	278,929	219,042,972	281,683	440,588,930	580,882	1,612,253,911	582,389	1,174,986,643
September	206,090	258,385,666	175,901	296,449,919	579,202	1,448,085,771	512,537	1,178,025,854
October	233,272	248,781,504	580,824	1,407,057,863
November	239,411	250,492,888	514,843	1,252,428,985
December	304,605	305,282,393	520,313	1,300,344,312
TOTAL	2,728,225	2,939,932,330	1,779,134	2,908,584,743	6,533,027	14,684,563,147	4,766,977	10,330,669,424

Source: Kenya Railways Corporation

*Provisional

¹ Excludes deductions from discounts offered to customers

.. Data not available

Table 19(e): Metre Gauge Railway (MGR) passenger and revenue

Passenger/ Number	2023			2024*									
	Oct	Nov	Dec	Jan	Feb	Mar	Apr	May	Jun	Jul	Aug	Sep	Oct
Nairobi - Kahawa	14,942	16,369	10,256	11,362	14,156	13,585	9,503	0	0	3,836	9,961	10,875	..
Nairobi - Ruiru	95,079	94,080	51,851	59,825	67,627	58,203	40,495	22,529	47,883	51,357	55,528	58,428	..
Nairobi - Embakasi	64,673	63,322	34,124	43,680	48,704	51,462	38,807	42,370	38,713	44,025	45,754	47,243	..
Nairobi - Kikuyu - Limuru	38,310	36,958	22,227	27,839	31,509	29,226	18,723	3,922	21,528	27,541	28,364	29,998	..
Nairobi - Athi River - Lukenya	10,469	8,861	4,934	7,913	10,182	9,520	7,465	8,379	8,466	9,716	10,201	9,695	..
Nairobi - Syokimau	8,180	7,941	4,218	5,772	7,179	9,328	5,327	6,762	8,119	14,040	7,079	2,639	..
SGR Link	51,846	46,500	56,009	38,193	31,387	36,831	42,568	33,506	35,473	36,904	47,126	33,120	..
DMU Nairobi- Syokimau	0	0	1,010	667	0	828	831	0	0	0	2,661	7,124	..
DMU Nairobi- Embakasi	7,135	7,052	4,373	5,952	7,727	10,466	7,469	8,007	8,559	12,244	12,276	11,513	..
BRT	19,846	19,820	10,259	14,466	16,586	16,255	15,185	15,365	13,591	16,662	16,466	18,494	..
Nanyuki Train	5,602	8,038	26,226	11,958	3,425	4,695	2,266	0	0	1,067	4,610	2,555	..
Kisumu Train	4,173	7,134	25,205	13,798	2,141	2,577	2,664	0	0	0	0	0	..
Special Train	0	0	100	0	0	0	0	0	0	0	0	0	..
Total	320,255	316,075	250,792	241,425	240,623	242,976	191,303	140,840	182,332	217,392	240,026	231,684	..
Passenger Revenue (KSh)													..
Nairobi - Kahawa	594,405	646,650	408,095	455,560	568,125	541,855	381,780	0	0	153,690	394,500	434,765	..
Nairobi - Ruiru	3,856,045	3,808,250	2,086,420	3,166,050	3,592,530	3,119,720	2,139,330	1,195,435	2,517,390	2,725,190	2,916,800	3,085,015	..
Nairobi - Embakasi	2,586,000	2,532,240	1,364,090	2,175,915	2,428,610	2,561,220	1,950,495	2,113,435	1,932,960	2,198,965	2,296,105	2,361,435	..
Nairobi - Kikuyu - Limuru	1,397,895	1,353,160	807,435	1,378,295	1,563,685	1,462,540	949,810	195,900	1,069,135	1,363,435	1,408,505	1,497,830	..
Nairobi - Athi River - Lukenya	732,535	621,960	339,440	519,995	652,320	597,065	459,425	522,765	544,615	599,880	656,370	598,990	..
Nairobi - Syokimau	459,580	427,990	221,500	321,990	394,340	518,200	281,899	349,545	426,290	796,740	402,300	143,310	..
SGR Link	2,508,080	2,327,370	2,806,080	1,918,090	1,567,750	1,847,375	2,153,260	1,699,650	1,774,770	1,858,850	2,365,470	1,657,430	..
DMU Nairobi- Syokimau	0	0	101,000	66,700	0	41,430	57,290	0	0	0	197,720	475,980	..
DMU Nairobi- Embakasi	798,550	709,100	429,870	514,240	661,750	797,450	620,350	682,850	690,050	939,700	945,450	932,700	..
BRT	766,900	794,570	415,510	580,560	672,980	649,650	597,945	637,610	565,120	671,615	1,132,745	749,405	..
Nanyuki Train	820,490	1,093,050	3,355,670	2,621,700	844,280	1,022,845	490,115	0	0	186,905	950,135	485,525	..
Kisumu Train	2,746,800	4,285,010	14,832,160	10,923,506	1,821,325	2,386,900	2,207,650	0	0	0	0	0	..
Special Train	0	0	310,045	0	0	0	0	0	0	0	0	0	..
Total	17,267,280	18,599,350	27,477,315	24,642,601	14,767,695	15,546,250	12,289,349	7,397,190	9,520,330	11,494,970	13,666,100	12,422,385	..

Source: Kenya Railways

BRT- Bus Rapid Transport

DMU- Diesel Multiple Units

*Provisional

.. Data not available

Table 19(f): Monthly Cargo Throughput at the port of Mombasa

Metric tonnes													
Descriptions/Period	2023			2024*									
	Oct	Nov	Dec	Jan	Feb	Mar	Apr	May	Jun	Jul	Aug	Sep	Oct
Imports													
Dry General-Containerized	913,087	903,808	938,933	859,745	778,341	1,120,269	892,064	994,504	805,711	964,797	860,074	938,799	..
Dry General- Conventional	101,254	115,643	163,688	116,387	158,664	107,500	109,939	90,749	217,147	200,563	151,865	199,193	..
Dry Bulk	607,227	721,453	457,791	614,896	284,821	526,545	712,716	733,260	627,939	316,895	651,897	547,853	..
P.O.L ¹	734,552	734,708	580,342	717,460	529,661	587,025	934,506	790,014	778,666	778,416	937,813	733,104	..
Other Bulk Liquids	64,820	58,153	50,670	76,464	126,124	34,453	56,926	43,228	55,068	59,334	75,658	95,499	..
Sub-Total	2,420,940	2,533,765	2,191,424	2,384,952	1,877,611	2,375,792	2,706,151	2,651,755	2,484,531	2,320,005	2,677,307	2,514,448	..
Exports													
Dry General-Containerized	374,142	355,099	350,236	330,123	352,427	471,805	343,585	421,693	348,927	494,885	405,462	401,839	..
Dry General-Conventional	3,138	1,217	1,089	4,625	10,010	2,421	1,667	999	11,155	5,119	1,014	6,929	..
Dry Bulk	730	11,000	52,350	10,250	9,000	20,000	15,000	399	54,000	3,729	-	-	..
P.O.L ¹	-	-	-	-	-	-	-	-	-	-	-	-	..
Bunkers	1,307	498	-	-	-	-	-	785	1,063	423	645	1,238	..
Other Bulk Liquids	-	-	-	-	-	-	-	-	-	-	3,702	-	..
Sub-Total	379,317	367,814	403,675	344,998	371,437	494,226	360,252	423,876	415,145	504,156	410,823	410,006	..
Transshipment	169,912	369,158	392,060	576,215	457,251	457,688	366,849	468,793	454,318	460,211	380,233	493,626	..
Restows	8,978	15,985	13,169	35,564	35,650	8,538	9,442	19,290	10,289	10,361	8,835	14,427	..
Grand Total	2,955,363	2,762,509	2,979,147	3,286,722	2,741,949	3,336,244	3,442,694	3,563,714	3,364,283	3,294,733	3,477,198	3,432,507	..

Source: Kenya Ports Authority

¹ Refers to Petroleum, Oil and Lubricants

- No data

.. Data not available