



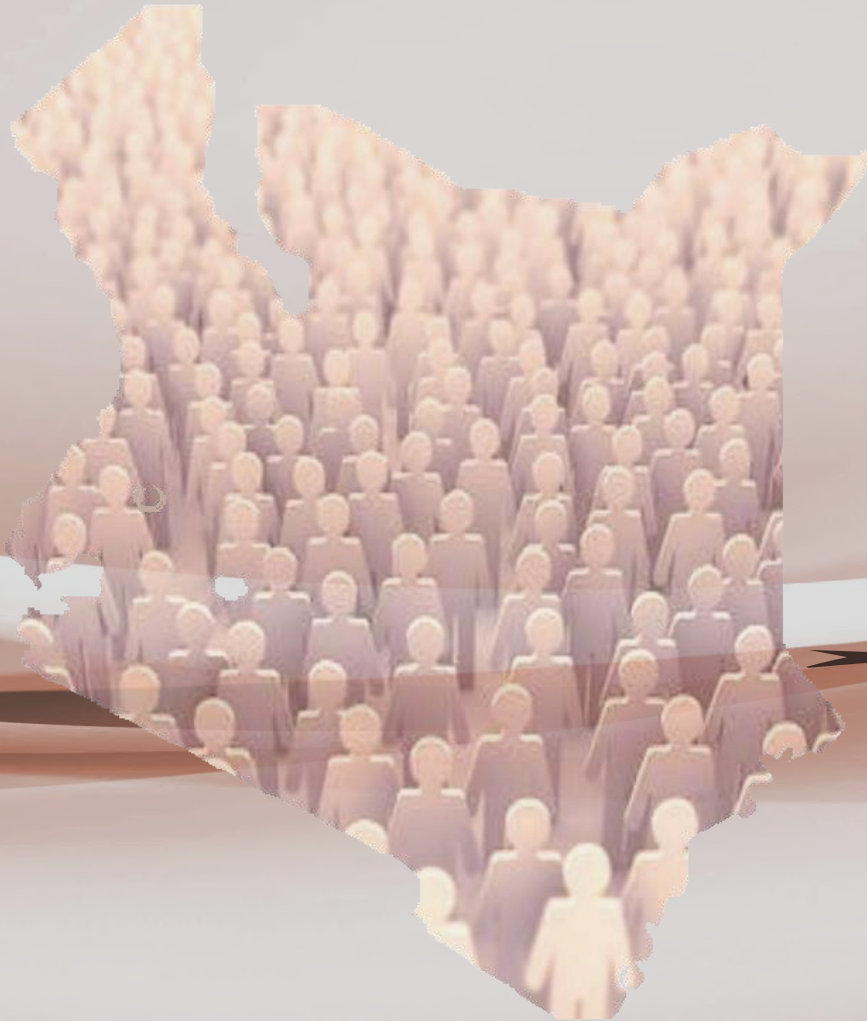
REPUBLIC OF KENYA

## 2019 KENYA POPULATION AND HOUSING CENSUS

---

### VOLUME I: POPULATION BY COUNTY AND SUB-COUNTY

---



November 2019



REPUBLIC OF KENYA

## 2019 KENYA POPULATION AND HOUSING CENSUS

VOLUME I:

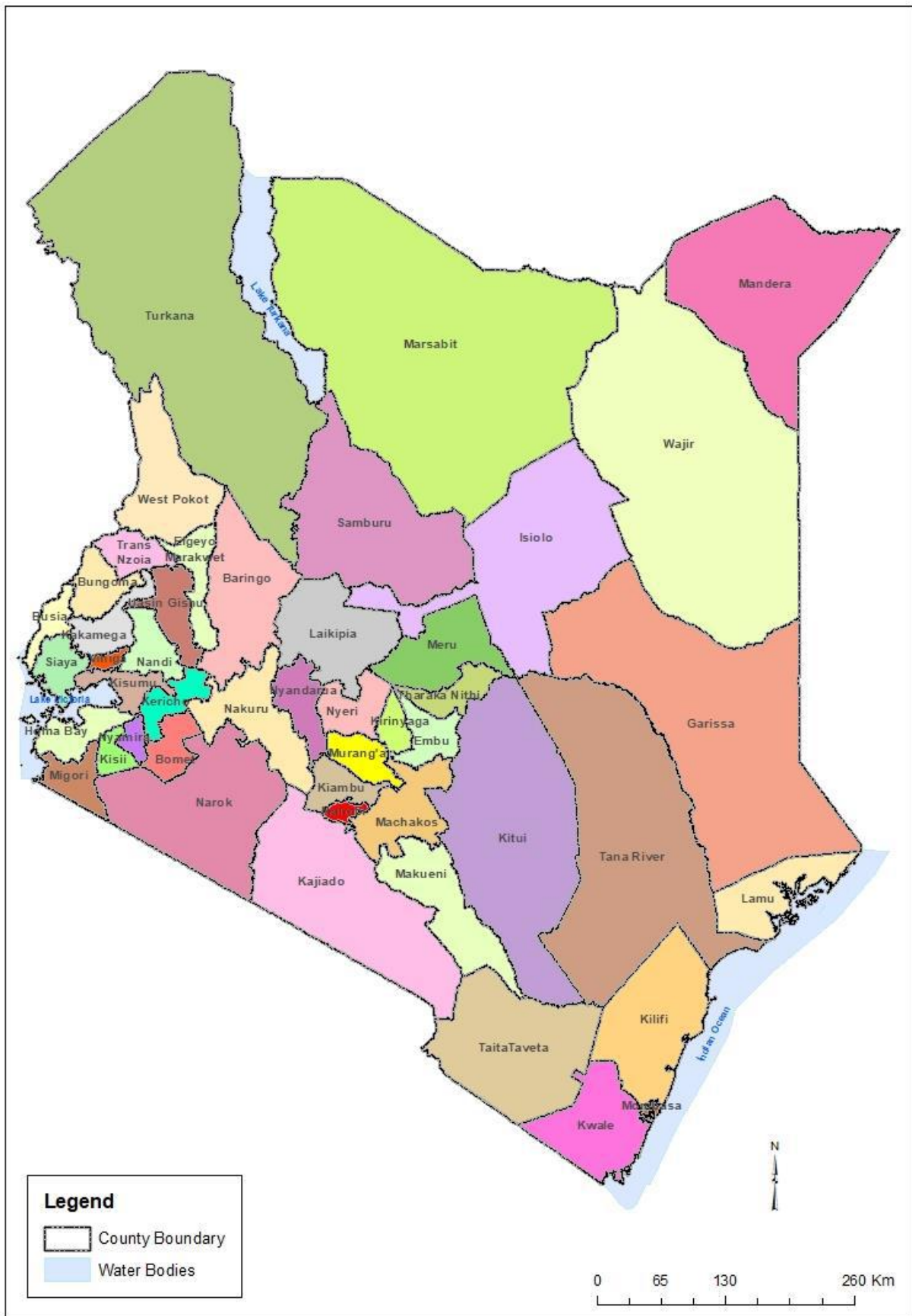
POPULATION BY COUNTY AND SUB-COUNTY



*Counting Our People for Sustainable Development and Devolution of Services*

November 2019

## Kenya Counties



Kenya National Bureau of Statistics

P.O Box 30266-00100

Nairobi

Tel. +254-20-3317583/6/8

E-mail: [directorgeneral@knbs.or.ke](mailto:directorgeneral@knbs.or.ke)

or

[info@knbs.or.ke](mailto:info@knbs.or.ke)

Website: <http://www.knbs.or.ke>

ISBN: 978-9966-102-09-6

All Rights Reserved Copyright©2019

Extracts may be published if the source is duly acknowledged

## About KNBS

The Kenya National Bureau of Statistics (KNBS) is the principal agency of the Government for collecting, analysing and disseminating statistical data, and the custodian of official statistical information. The Bureau is also responsible for the co-ordination of the National Statistical System (NSS) in the country.

The functions of KNBS as defined in the Statistics (Amendment) Act, 2019 are:

- Planning, authorising, coordinating and supervising all official statistical programmes undertaken within the NSS;
- Establishing standards and ensuring the use of best practices and methods in the production and dissemination of statistical information across the NSS;
- Collecting, compiling, analysing, abstracting and disseminating statistical information;
- Conducting the Population and Housing Census every ten years, and such other censuses and surveys as the Board may determine;
- Maintaining a comprehensive and reliable national socio-economic database;
- Developing and maintaining sampling frames of the Bureau;
- Collaborating with and assisting the county governments or any institutions in the production of official statistics;
- Providing technical advice on statistics to other state entities;
- Promoting co-ordination among producers, users and suppliers of official statistics by forming appropriate sector committees; and
- Designating statistics produced by national statistical system as official statistics on being satisfied that the necessary criteria have been followed.

The KNBS has an elaborate infrastructure for data collection across the country. This includes, a County Statistical Office in each of the 47 counties, two sampling frames for implementation of censuses and surveys and various databases for socio-economic statistical information.

The Bureau collects various statistical information on monthly, quarterly, semi-annually and annual basis. Ad hoc surveys and studies are also carried out to gather information on specific indicators. Some of the statistical products of the Bureau include; Consumer Price Index (CPI), Leading Economic Indicators report, Quarterly Gross Domestic Product (GDP), Quarterly Producer Price Index (PPI), Quarterly Balance of Payment, Annual Economic Survey Report and Annual Statistical Abstract. The Bureau also provides statistical information to regional and international organisations. The KNBS maintains various platforms through which products and statistical information are disseminated.

The Bureau provides information for monitoring the country's development agenda as well as internationally agreed initiatives such as Sustainable Development Goals (SDGs).

In undertaking its mandate, the Bureau is guided by a Vision, Mission and Core Values.

### **Vision**

“To be a global leader in the provision of quality statistical services”

### **Mission**

“To provide, manage and promote quality statistical services through utilization of best practices for evidence-based decision making”.

### **Core Values**

- P-Professionalism: The Bureau will strictly abide by professional considerations, including scientific principles and ethics on methods, standards and procedures for provision of quality statistical services.
- I-Integrity: The Bureau will adhere to the principles of good governance to ensure transparency and accountability in undertaking its programmes and activities.
- C-Confidentiality: The Bureau will treat all information provided by stakeholders with strict confidentiality and use it exclusively for statistical purposes
- C-Customer Focus: The Bureau commits itself to align its programmes to the expectations of its stakeholders and attaining the highest standards in service delivery.
- I-Innovation: The Bureau will continuously embrace creativity and innovation for value-addition in its business processes.
- T-Teamwork: The Bureau will embrace teamwork in pursuing timely attainment of targeted results at all levels, through coordination and networking.

## Foreword

The 2019 Kenya Population and Housing Census (KPHC) was conducted in August 2019 and followed the United Nations principles and recommendations for conducting the 2020 round of censuses. The Census collected information on the demographic and socio-economic characteristics of the population. In addition, information relating to housing amenities and emigrants was collected.

The theme for the census was *“Counting Our People for Sustainable Development and Devolution of Services”*. The theme resonates well with Kenya’s development agenda -Vision 2030 and the Big Four, as well as other regional and International development initiatives including the Sustainable Development Goals (SDGs) and the African Union Agenda 2063. The information contained herein responds to the ever-increasing demand for official statistical information and provides benchmark information for other statistical development and infrastructure.

The 2019 Kenya Population and Housing Census Volume I report is the first in a series of census publications. It presents the distribution of the enumerated population by sex; number of households; and average household size, at national, county and sub-county levels. Also contained in the report is information on land area and population density, as per the administrative boundaries. Further work is ongoing to produce basic and in-depth analytical topical reports on the Census.

The Bureau is indebted to all the organs of government, the private sector and the public for the overwhelming support and participation in implementing the Census. I thank all the census personnel who played a key role in the overall success of the 2019 KPHC.

Stakeholders are encouraged to utilize the information in this report effectively.



Zachary Mwangi  
Director General, KNBS

## Table of Contents

Table of Contents .....	i
List of Tables .....	ii
List of Figures .....	ii
Acronyms and Abbreviations .....	iii
Chapter 1: Introduction .....	1
1.1 Background Information .....	1
1.2 Objectives of the 2019 Census .....	1
1.3 Theme of the 2019 Census .....	1
1.4 Implementation of the 2019 Census .....	1
1.4.1 Legal Framework .....	1
1.4.2 Census Management Structure .....	2
1.4.3 Use of Technology.....	2
1.4.4 Cartographic Mapping.....	2
1.4.5 Census Questionnaires .....	2
1.4.6 Pilot and Pre-tests .....	3
1.4.7 Publicity and Advocacy .....	3
1.4.8 Recruitment and Training.....	3
1.4.9 Enumeration.....	3
1.4.10 Data Transmission and Storage .....	3
1.5 Data Processing.....	4
1.6 Quality Assurance .....	4
Chapter 2: Summary Results .....	5
2.1 Highlights of the 2019 KPHC Results .....	5
2.2 Trend analysis .....	5
2.3 Distribution of Population by County.....	7
2.4 Distribution of Population by Sub-county .....	12



## List of Tables

Table 2. 1: Census Indicators at a Glance, 2019 .....	5
Table 2. 2: Distribution of Population by Sex and County .....	7
Table 2. 3: Distribution of Population, Number of Households and Average.....	9
Table 2. 4: Distribution of Population, Land Area and Population Density by County.....	10
Table 2. 5: Distribution of Population by Sex and Sub-County .....	12
Table 2. 6: Distribution of Population, Number of Households and Average Household Size by Sub-County.....	21
Table 2. 7: Distribution of Population by Land Area and Population Density by Sub-County.....	30

## List of Figures

Figure 2. 1: Population Trend, 1969 to 2019.....	5
Figure 2. 2: Inter-Censal Population Growth Rates.....	6
Figure 2. 3: Distribution of Population by County .....	8
Figure 2. 4: Population Density by County .....	11

## Acronyms and Abbreviations

CSPro	Census and Survey Processing system
EA	Enumeration Area
GPS	Geographical Positioning System
ICT	Information, Communication and Technology
KNBS	Kenya National Bureau of Statistics
KPHC	Kenya Population and Housing Census
NSS	National Statistical System
SDGs	Sustainable Development Goals
SPSS	Statistical Package for Social Sciences
UN	United Nations

## Chapter 1: Introduction

### 1.1 Background Information

The first known population census in Kenya was conducted in 1897 and was basically a headcount. This was followed by the 1948 census that focused on non-natives. A complete census that enumerated 8.6 million persons was conducted in 1962 and was used to set up political and administrative structures. The first post-independence census was undertaken in 1969 and enumerated 10.9 million persons. Since then, the country has conducted decennial Population and Housing Censuses on a *de facto* basis with the midnight of 24<sup>th</sup>/25<sup>th</sup> August as the reference point. The censuses have been implemented in accordance with the UN Principles and Recommendations for conducting population and housing censuses.

### 1.2 Objectives of the 2019 Census

The main objective of the 2019 KPHC was to collect information on the size, composition, distribution and socio-economic characteristics of the population. This information will be used in planning, budgeting and programming for important services; future policy formulation, resource allocation; creation of administrative and political units; monitoring and evaluation of programmes and projects; research; development of a master household sampling frame; development of geo-spatial database; benchmark for agricultural census/surveys; business, industry and labour; and formulation of housing policy and programmes.

### 1.3 Theme of the 2019 Census

The theme of the census was *“Counting Our People for Sustainable Development and Devolution of Services”*. This is in response to the demand for statistical information for implementation of Kenya’s development agenda such as the Big Four and Vision 2030 and other global initiatives including the Sustainable Development Goals (SDGs).

### 1.4 Implementation of the 2019 Census

#### 1.4.1 Legal Framework

The 2019 Kenya Population and Housing Census was conducted under the provisions of the Constitution of Kenya, 2010 (Fourth Schedule Part 1 Item 11), the Statistics (Amendment) Act, 2019 and the Statistics (Census of Population) Order, 2018 - Legal

Notice No. 205 and the Cabinet Memorandum of May 2017 on the implementation of the 2019 population and housing census process.

#### **1.4.2 Census Management Structure**

Various committees were established and operationalized at both national and county levels to manage the census process. The National Census Steering Committee spearheaded the implementation process and provided policy direction. Coordination of the processes was undertaken by the National Census Coordination Committee while the Technical Working Committee was responsible for all the technical aspects of the census. County and Sub-County Census Committees were established to implement Census activities at respective levels.

#### **1.4.3 Use of Technology**

Kenya adopted the use of mobile technology to collect data during the 2019 census as recommended by the UN for the 2020 round of censuses. This was the first census in Kenya to use mobile technology in the capture and transmission of data for both cartographic mapping and enumeration. The mobile devices used for data collection were assembled by local universities.

#### **1.4.4 Cartographic Mapping**

The implementation of preparatory activities for the 2019 KPHC started in early 2016 with Cartographic Mapping exercise. The process involved delineation of the country into small geographical units known as Enumeration Areas (EAs). The EAs were used in determining the number of census personnel required as well as in ensuring total coverage during enumeration. The exercise was done using mobile devices where Geographical Positioning System (GPS) coordinates for homesteads, households, and other features of interest were picked and digitized using satellite imageries in rural areas and aerial photographs in urban areas. Digitized sub-location and EA maps were generated based on administrative boundaries and uploaded onto mobile devices for use during the enumeration exercise.

#### **1.4.5 Census Questionnaires**

The census questionnaires and manuals were developed through a consultative process spearheaded by the Technical Working Committee comprising of various stakeholders. A mobile data capture system was designed and adopted by changing the paper questionnaires to electronic questionnaires. These were uploaded onto the mobile devices for data collection and transmission. Five sets of questionnaires (one main and four short)

were developed to cover the conventional population and special population (travellers, outdoor sleepers, individuals in hotels and lodges and persons in institutions).

#### **1.4.6 Pilot and Pre-tests**

A Pilot Census was conducted in August 2018, a year prior to actual enumeration as per the UN recommendation, followed by two pre-tests undertaken in April and May 2019. This was meant to assess the preparedness for the actual enumeration in terms of logistics, map accuracy, content and flow of questions, data capture application and data transmission. Lessons learnt provided crucial input in the finalization of the tools and implementation strategies.

#### **1.4.7 Publicity and Advocacy**

Publicity and advocacy campaigns were done in all parts of the country through various channels, including; print media, national and local radio stations, mobile telephony, television stations and road shows. A call/contact centre was established with a toll-free line to respond to queries raised by the field teams and the public.

#### **1.4.8 Recruitment and Training**

Recruitment of census personnel who included 2,467 ICT supervisors, 22,268 content supervisors and 138,572 enumerators was undertaken by the County and Sub-County Census Committees through a competitive process. The training of these personnel was conducted in a cascaded manner from the training of trainers to the training of enumerators. The training for various cadres was conducted for seven days for each cadre.

#### **1.4.9 Enumeration**

The main census enumeration was preceded by EA boundary identification and pre-enumeration listing of households in each EA for two days on 22<sup>nd</sup> and 23<sup>rd</sup> August 2019. The pre-enumeration listing exercise helped in gauging the expected workload during the 7 days of enumeration. The actual enumeration took place from the night of 24<sup>th</sup>/25<sup>th</sup> August 2019 and ended on 31<sup>st</sup> August 2019. The mop-up exercise was conducted on 1<sup>st</sup> and 2<sup>nd</sup> September 2019. The special population was strictly enumerated on the night of 24<sup>th</sup>/25<sup>th</sup> August 2019.

#### **1.4.10 Data Transmission and Storage**

Data was collected by enumerators using mobile devices (tablets) and subsequently transmitted to a central server. The data was encrypted prior to transmission and was backed up in off-site locations.

## **1.5 Data Processing**

The editing of the census data was guided by the United Nations Handbook on Population and Housing Census editing. The data was processed using CPro, Stata and SPSS software. In addition, validation checks were done to ensure that all EAs, aligned to administrative boundaries, were accounted for in the dataset. Outputs were generated based on administrative areas.

## **1.6 Quality Assurance**

Quality assurance was integrated in all phases of the census process. Comprehensive guidelines were developed and shared with census personnel. Field supervision followed a three-tier structure to ensure adequate support, real-time response to emerging issues, and feedback during data collection. In addition, enumeration reporting schedules and control forms were used to facilitate monitoring of activities. Field monitoring teams oversaw technical, logistical and administrative aspects of enumeration in each region. Further, independent observers, drawn from the international community and national statistics offices across Africa monitored and observed undertaking of the census.

## Chapter 2: Summary Results

This chapter presents the distribution of the enumerated population by sex; number of households; and average household size, at national, county and sub-county levels. Information on land area and population density, as per the administrative boundaries is also provided.

### 2.1 Highlights of the 2019 KPHC Results

*Table 2. 1: Census Indicators at a Glance, 2019*

Indicator	2019
Population Size ('000s) .....	47,564.3
Male ('000s).....	23,548.1
Female ('000s) .....	24,014.7
Inter Sex ('000s).....	1.5
Sex Ratio (No. of Males per 100 Females).....	98.1
Population Density (No. per sq. Km).....	82
Number of Households ('000s).....	12,143.9
Average Household Size.....	3.9
Inter-Censal Growth Rate (%) .....	2.2

### 2.2 Trend analysis

*Figure 2. 1: Population Trend, 1969 to 2019*

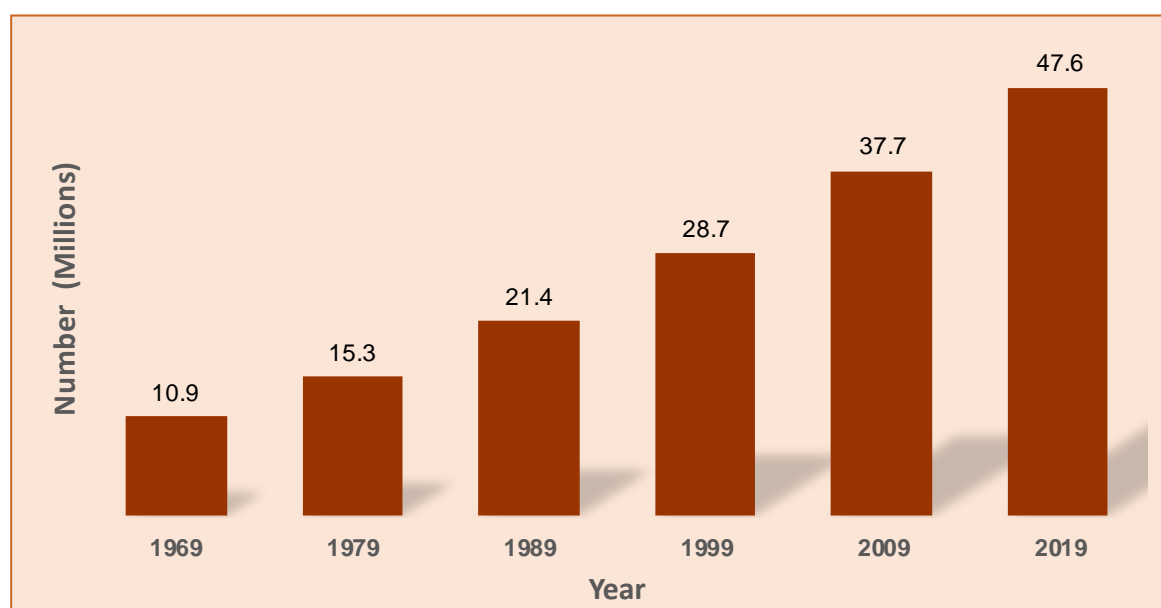
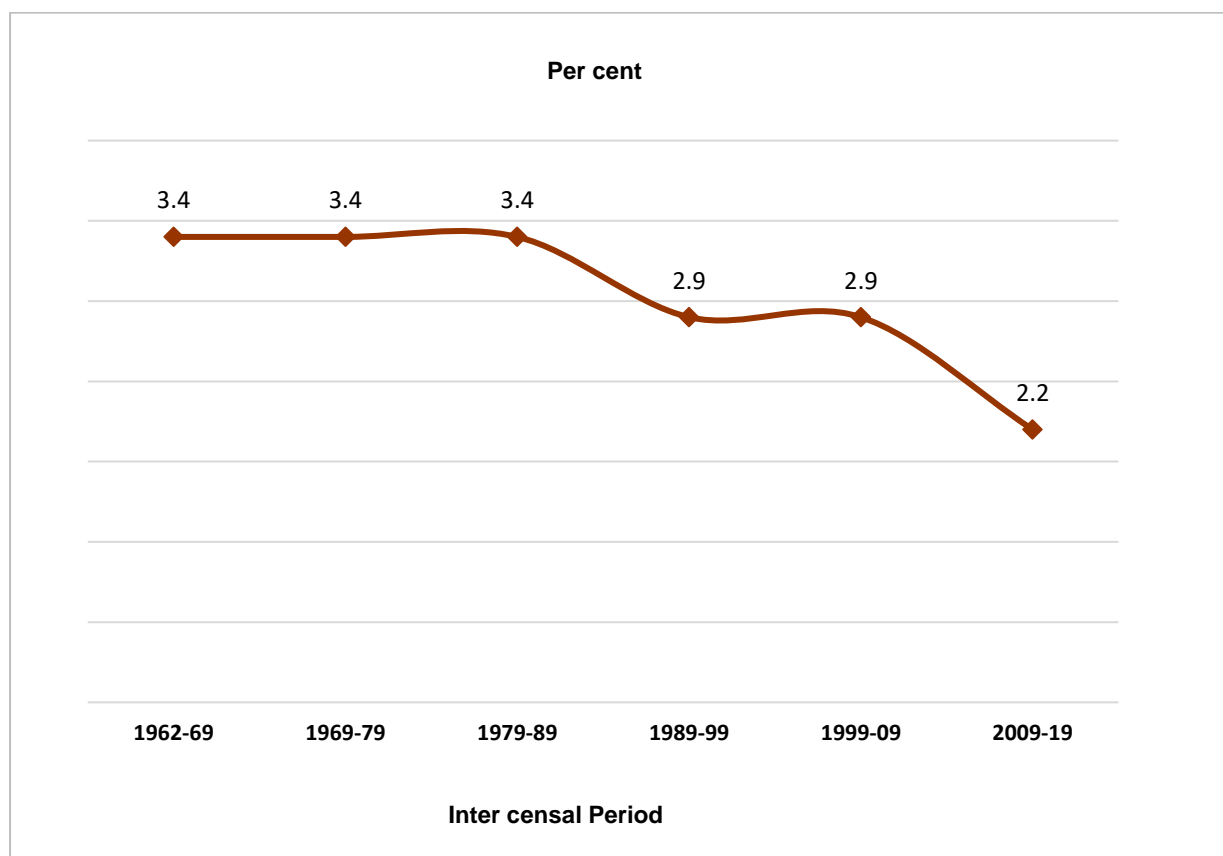


Figure 2. 2: Inter-Censal Population Growth Rates



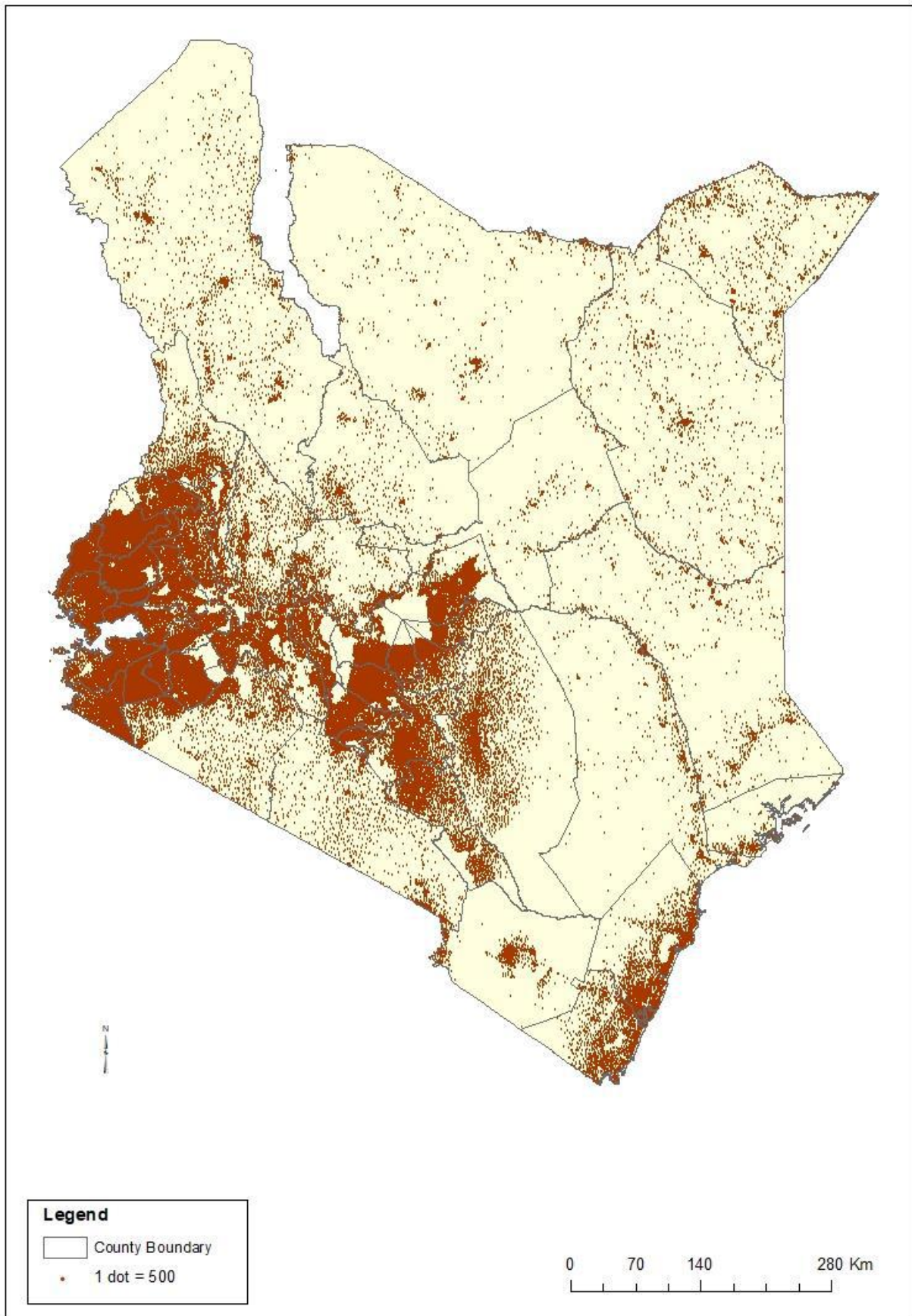


## 2.3 Distribution of Population by County

*Table 2. 2: Distribution of Population by Sex and County*

National/ County	Sex			Total
	Male	Female	Intersex	
<b>Kenya</b> .....	<b>23,548,056</b>	<b>24,014,716</b>	<b>1,524</b>	<b>47,564,296</b>
<b>County</b>				
Mombasa.....	610,257	598,046	30	1,208,333
Kwale.....	425,121	441,681	18	866,820
Kilifi.....	704,089	749,673	25	1,453,787
Tana River.....	158,550	157,391	2	315,943
Lamu.....	76,103	67,813	4	143,920
Taita/Taveta.....	173,337	167,327	7	340,671
Garissa.....	458,975	382,344	34	841,353
Wajir.....	415,374	365,840	49	781,263
Mandera.....	434,976	432,444	37	867,457
Marsabit.....	243,548	216,219	18	459,785
Isiolo.....	139,510	128,483	9	268,002
Meru.....	767,698	777,975	41	1,545,714
Tharaka-Nithi.....	193,764	199,406	7	393,177
Embu.....	304,208	304,367	24	608,599
Kitui.....	549,003	587,151	33	1,136,187
Machakos.....	710,707	711,191	34	1,421,932
Makueni.....	489,691	497,942	20	987,653
Nyandarua.....	315,022	323,247	20	638,289
Nyeri.....	374,288	384,845	31	759,164
Kirinyaga.....	302,011	308,369	31	610,411
Murang'a.....	523,940	532,669	31	1,056,640
Kiambu.....	1,187,146	1,230,454	135	2,417,735
Turkana.....	478,087	448,868	21	926,976
West Pokot.....	307,013	314,213	15	621,241
Samburu.....	156,774	153,546	7	310,327
Trans Nzoia.....	489,107	501,206	28	990,341
Uasin Gishu.....	580,269	582,889	28	1,163,186
Elgeyo/Marakwet.....	227,317	227,151	12	454,480
Nandi.....	441,259	444,430	22	885,711
Baringo.....	336,322	330,428	13	666,763
Laikipia.....	259,440	259,102	18	518,560
Nakuru.....	1,077,272	1,084,835	95	2,162,202
Narok.....	579,042	578,805	26	1,157,873
Kajiado.....	557,098	560,704	38	1,117,840
Kericho.....	450,741	451,008	28	901,777
Bomet.....	434,287	441,379	23	875,689
Kakamega.....	897,133	970,406	40	1,867,579
Vhiga.....	283,678	306,323	12	590,013
Bungoma.....	812,146	858,389	35	1,670,570
Busia.....	426,252	467,401	28	893,681
Siaya.....	471,669	521,496	18	993,183
Kisumu.....	560,942	594,609	23	1,155,574
Homa Bay.....	539,560	592,367	23	1,131,950
Migori.....	536,187	580,214	35	1,116,436
Kisii.....	605,784	661,038	38	1,266,860
Nyamira.....	290,907	314,656	13	605,576
Nairobi City.....	2,192,452	2,204,376	245	4,397,073

Figure 2. 3: Distribution of Population by County



**Table 2. 3: Distribution of Population, Number of Households and Average Household Size by County**

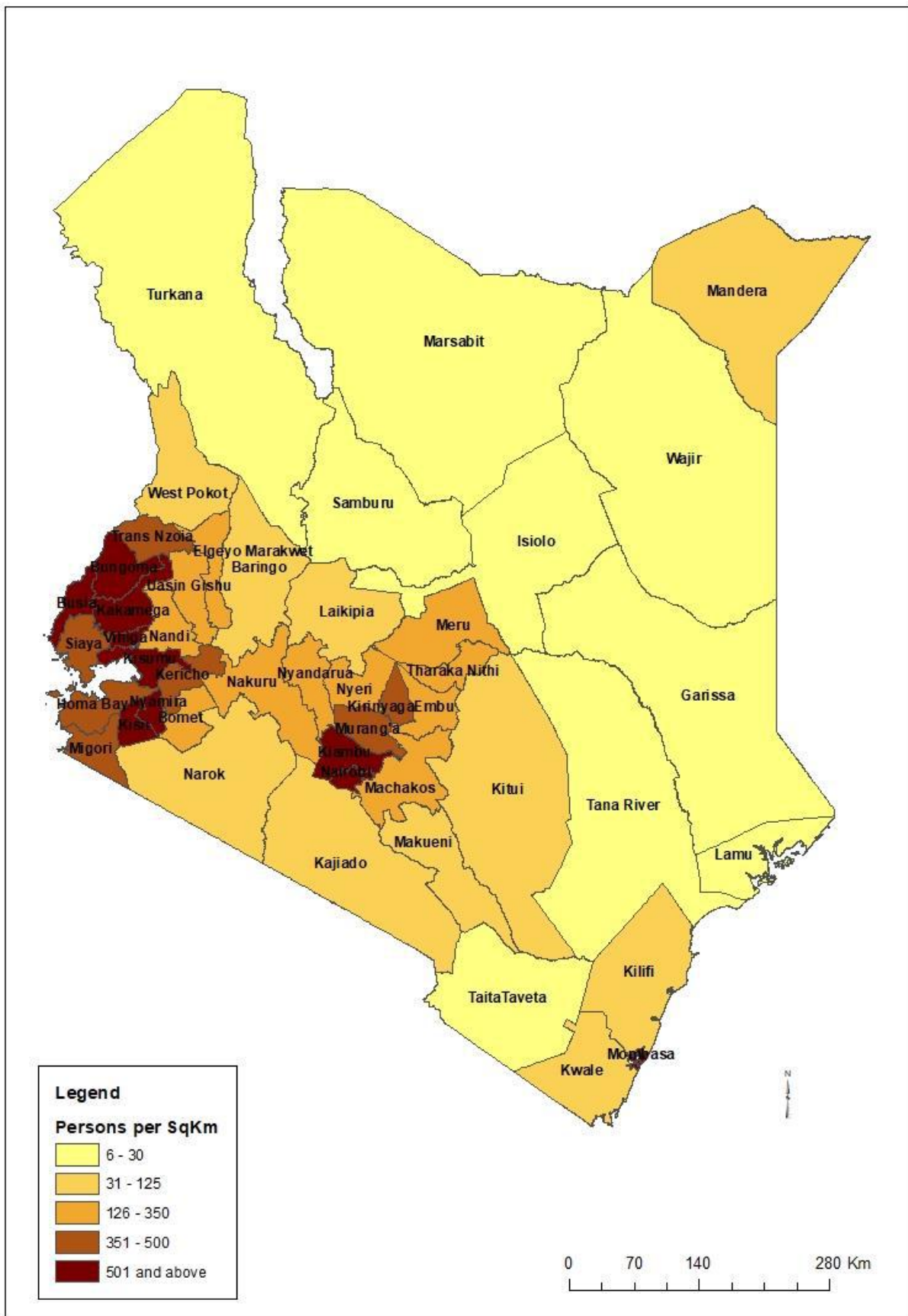
National/ County	Population+	Number of Households	Average Household size
<b>Kenya</b> .....	<b>47,213,282</b>	<b>12,143,913</b>	<b>3.9</b>
<b>County</b>			
Mombasa.....	1,190,987	378,422	3.1
Kwale.....	858,748	173,176	5.0
Kilifi.....	1,440,958	298,472	4.8
Tana River.....	314,710	68,242	4.6
Lamu.....	141,909	37,963	3.7
Taita/Taveta.....	335,747	96,429	3.5
Garissa.....	835,482	141,394	5.9
Wajir.....	775,302	127,932	6.1
Mandera.....	862,079	125,763	6.9
Marsabit.....	447,150	77,495	5.8
Isiolo.....	267,997	58,072	4.6
Meru.....	1,535,635	426,360	3.6
Tharaka-Nithi.....	391,303	109,860	3.6
Embu.....	604,769	182,743	3.3
Kitui.....	1,130,134	262,942	4.3
Machakos.....	1,414,022	402,466	3.5
Makueni.....	977,015	244,669	4.0
Nyandarua.....	636,002	179,686	3.5
Nyeri.....	752,695	248,050	3.0
Kirinyaga.....	605,630	204,188	3.0
Murang'a.....	1,053,059	318,105	3.3
Kiambu.....	2,402,834	795,241	3.0
Turkana.....	922,210	164,519	5.6
West Pokot.....	618,867	116,182	5.3
Samburu.....	307,957	65,910	4.7
Trans Nzoia.....	985,333	223,808	4.4
Uasin Gishu.....	1,152,671	304,943	3.8
Elgeyo/Marakwet.....	453,403	99,861	4.5
Nandi.....	883,634	199,426	4.4
Baringo.....	662,760	142,518	4.7
Laikipia.....	513,879	149,271	3.4
Nakuru.....	2,142,667	616,046	3.5
Narok.....	1,149,379	241,125	4.8
Kajiado.....	1,107,296	316,179	3.5
Kericho.....	896,863	206,036	4.4
Bomet.....	873,023	187,641	4.7
Kakamega.....	1,861,332	433,207	4.3
Vhiga.....	587,189	143,365	4.1
Bungoma.....	1,663,898	358,796	4.6
Busia.....	886,856	198,152	4.5
Siaya.....	989,708	250,698	3.9
Kisumu.....	1,144,777	300,745	3.8
Homa Bay.....	1,125,823	262,036	4.3
Migori.....	1,108,950	240,168	4.6
Kisii.....	1,260,509	308,054	4.1
Nyamira.....	603,051	150,669	4.0
Nairobi City.....	4,337,080	1,506,888	2.9

+ Excludes the special population (travellers, outdoor sleepers, individuals in hotels and lodges and persons in institutions).

**Table 2. 4: Distribution of Population, Land Area and Population Density by County**

National/ County	Population	Land Area (Sq. Km)	Population Density (No. per Sq. Km)
<b>Kenya.....</b>	<b>47,564,296</b>	<b>580,876.3</b>	<b>82</b>
<b>County</b>			
Mombasa.....	1,208,333	219.9	5,495
Kwale.....	866,820	8,267.1	105
Kilifi.....	1,453,787	12,539.7	116
Tana River.....	315,943	37,950.5	8
Lamu.....	143,920	6,253.3	23
Taita/Taveta.....	340,671	17,152.0	20
Garissa.....	841,353	44,736.0	19
Wajir.....	781,263	56,773.1	14
Mandera.....	867,457	25,939.8	33
Marsabit.....	459,785	70,944.1	6
Isiolo.....	268,002	25,350.6	11
Meru.....	1,545,714	7,006.3	221
Tharaka-Nithi.....	393,177	2,564.4	153
Embu.....	608,599	2,820.7	216
Kitui.....	1,136,187	30,429.5	37
Machakos.....	1,421,932	6,042.7	235
Makueni.....	987,653	8,169.8	121
Nyandarua.....	638,289	3,285.7	194
Nyeri.....	759,164	3,325.0	228
Kirinyaga.....	610,411	1,478.3	413
Murang'a.....	1,056,640	2,524.2	419
Kiambu.....	2,417,735	2,538.6	952
Turkana.....	926,976	68,232.9	14
West Pokot.....	621,241	9,123.2	68
Samburu.....	310,327	21,065.1	15
Trans Nzoia.....	990,341	2,495.2	397
Uasin Gishu.....	1,163,186	3,392.2	343
Elgeyo/Marakwet.....	454,480	3,032.0	150
Nandi.....	885,711	2,855.8	310
Baringo.....	666,763	10,976.4	61
Laikipia.....	518,560	9,532.2	54
Nakuru.....	2,162,202	7,462.4	290
Narok.....	1,157,873	17,950.3	65
Kajiado.....	1,117,840	21,871.1	51
Kericho.....	901,777	2,436.1	370
Bomet.....	875,689	2,530.9	346
Kakamega.....	1,867,579	3,020.0	618
Vihiga.....	590,013	563.8	1,047
Bungoma.....	1,670,570	3,023.9	552
Busia.....	893,681	1,696.3	527
Siaya.....	993,183	2,529.8	393
Kisumu.....	1,155,574	2,085.4	554
Homa Bay.....	1,131,950	3,152.5	359
Migori.....	1,116,436	2,613.5	427
Kisii.....	1,266,860	1,323.0	958
Nyamira.....	605,576	897.3	675
Nairobi City.....	4,397,073	703.9	6,247

Figure 2. 4: Population Density by County



## 2.4 Distribution of Population by Sub-county

Table 2.5: Distribution of Population by Sex and Sub-County

National/ County	Sex			Total
	Male	Female	Intersex	
<b>Kenya</b> .....	<b>23,548,056</b>	<b>24,014,716</b>	<b>1,524</b>	<b>47,564,296</b>
<b>County/ Sub County</b>				
<b>Mombasa</b> .....	<b>610,257</b>	<b>598,046</b>	<b>30</b>	<b>1,208,333</b>
Changamwe.....	68,761	63,121	..	131,882
Jomvu.....	83,002	80,410	3	163,415
Kisauni.....	146,748	145,176	6	291,930
Likoni.....	126,962	123,392	4	250,358
Mita.....	75,565	78,601	5	154,171
Nyali.....	109,219	107,346	12	216,577
<b>Kwale</b> .....	<b>425,121</b>	<b>441,681</b>	<b>18</b>	<b>866,820</b>
Kinango.....	45,413	48,806	1	94,220
Lungalunga.....	97,174	101,245	4	198,423
Matuga.....	95,831	98,419	2	194,252
Msambweni.....	89,206	88,480	4	177,690
Samburu-Kwale.....	97,497	104,731	7	202,235
<b>Kilifi</b> .....	<b>704,089</b>	<b>749,673</b>	<b>25</b>	<b>1,453,787</b>
Chonyi.....	29,527	32,807	1	62,335
Ganze.....	66,921	76,981	4	143,906
Kaloleni.....	92,614	101,063	5	193,682
Kauma.....	10,965	11,673	..	22,638
Kilifi North.....	86,986	91,836	2	178,824
Kilifi South.....	101,852	104,897	4	206,753
Magarini.....	93,302	98,308	..	191,610
Malindi.....	163,351	169,866	9	333,226
Rabai.....	58,571	62,242	..	120,813
<b>Tana River</b> .....	<b>158,550</b>	<b>157,391</b>	<b>2</b>	<b>315,943</b>
Tana North.....	55,716	54,924	..	110,640
Tana Delta.....	59,123	57,632	2	116,757
Tana River.....	43,711	44,835	..	88,546
<b>Lamu</b> .....	<b>76,103</b>	<b>67,813</b>	<b>4</b>	<b>143,920</b>
Lamu East.....	11,675	10,583	..	22,258
Lamu West.....	64,428	57,230	4	121,662
<b>Taita/Taveta</b> .....	<b>173,337</b>	<b>167,327</b>	<b>7</b>	<b>340,671</b>
Mwatate.....	41,426	40,231	2	81,659
Taita.....	28,386	27,573	..	55,959
Taveta.....	47,410	43,812	..	91,222
Voi.....	56,115	55,711	5	111,831
<b>Garissa</b> .....	<b>458,975</b>	<b>382,344</b>	<b>34</b>	<b>841,353</b>
Balambala.....	20,277	11,979	1	32,257
Dadaab.....	99,059	86,185	8	185,252
Fafi.....	72,617	61,413	10	134,040
Garissa.....	83,460	80,449	5	163,914
Hulugho.....	78,081	55,898	5	133,984
Ijara.....	80,458	61,129	4	141,591
Lagdera.....	25,023	25,291	1	50,315

Table 2.5: Distribution of Population by Sex and Sub-County, Cont'd

National/ County	Sex			Total
	Male	Female	Intersex	
<b>Wajir</b> .....	<b>415,374</b>	<b>365,840</b>	<b>49</b>	<b>781,263</b>
Buna.....	26,796	23,088	2	49,886
Eldas.....	44,743	43,759	7	88,509
Habaswein.....	94,613	79,505	16	174,134
Tarbaj.....	27,141	30,086	5	57,232
Wajir East.....	59,359	51,292	3	110,654
Wajir North.....	31,990	30,209	7	62,206
Wajir South.....	64,947	51,864	3	116,814
Wajir West.....	65,785	56,037	6	121,828
<b>Mandera</b> .....	<b>434,976</b>	<b>432,444</b>	<b>37</b>	<b>867,457</b>
Mandera West.....	48,166	50,130	4	98,300
Banisa.....	78,301	74,288	9	152,598
Kutulo.....	35,799	36,593	2	72,394
Lafey.....	40,476	42,976	5	83,457
Mandera Central.....	71,688	85,527	5	157,220
Mandera East.....	83,538	76,095	5	159,638
Mandera North.....	77,008	66,835	7	143,850
<b>Marsabit</b> .....	<b>243,548</b>	<b>216,219</b>	<b>18</b>	<b>459,785</b>
Loiyangalani.....	17,659	18,051	3	35,713
Marsabit Central.....	40,956	38,214	11	79,181
Marsabit North.....	30,091	24,205	1	54,297
Marsabit South.....	33,215	32,161	..	65,376
Moyale.....	56,440	52,508	1	108,949
North Horr.....	41,719	29,726	2	71,447
Sololo.....	23,468	21,354	..	44,822
<b>Isiolo</b> .....	<b>139,510</b>	<b>128,483</b>	<b>9</b>	<b>268,002</b>
Garbatulla.....	54,661	45,068	1	99,730
Isiolo.....	60,414	60,647	5	121,066
Merti.....	24,435	22,768	3	47,206
<b>Meru</b> .....	<b>767,698</b>	<b>777,975</b>	<b>41</b>	<b>1,545,714</b>
Buuri East.....	38,101	38,497	..	76,598
Buuri West.....	40,496	40,264	2	80,762
Igembe Central.....	111,208	110,200	4	221,412
Igembe North.....	83,364	85,949	4	169,317
Igembe South.....	80,192	81,446	8	161,646
Imenti North.....	88,506	89,056	5	177,567
Imenti South.....	103,338	103,162	6	206,506
Meru Central.....	66,920	66,894	4	133,818
Tigania Central.....	51,814	52,916	..	104,730
Tigania East.....	35,352	37,194	3	72,549
Tigania West.....	67,715	72,241	5	139,961
Meru National Park*.....	283	102	..	385
Mt. Kenya Forest*.....	409	54	..	463

\*Demarcated as a special area to ensure complete coverage during census enumeration

Table 2.5: Distribution of Population by Sex and Sub-County, Cont'd

National/ County	Sex			Total
	Male	Female	Intersex	
<b>Tharaka-Nithi</b> .....	<b>193,764</b>	<b>199,406</b>	<b>7</b>	<b>393,177</b>
Igambang'ombe.....	26,464	26,745	1	53,210
Maara.....	57,689	57,205	..	114,894
Meru South.....	44,923	46,155	2	91,080
Tharaka North.....	28,290	30,053	2	58,345
Tharaka South.....	36,190	39,058	2	75,250
Mt. Kenya Forest*.....	208	190	..	398
<b>Embu</b> .....	<b>304,208</b>	<b>304,367</b>	<b>24</b>	<b>608,599</b>
Embu East.....	64,571	64,991	2	129,564
Embu North.....	39,665	39,888	3	79,556
Embu West.....	63,125	63,966	9	127,100
Mbeere South.....	83,311	80,159	6	163,476
Mbeere North.....	53,517	55,360	4	108,881
Mt. Kenya Forest*.....	19	3	..	22
<b>Kitui</b> .....	<b>549,003</b>	<b>587,151</b>	<b>33</b>	<b>1,136,187</b>
Ikutha.....	39,986	42,976	2	82,964
Katulani.....	23,150	23,957	1	47,108
Kisasi.....	22,646	23,496	..	46,142
Kitui Central.....	52,123	53,863	5	105,991
Kitui West.....	33,887	36,983	1	70,871
Kyuso.....	36,789	40,077	1	76,867
Lower Yatta.....	31,701	31,628	..	63,329
Matinyani.....	23,362	24,448	1	47,811
Migwani.....	37,525	41,726	4	79,255
Mumoni.....	13,748	15,596	..	29,344
Mutitu.....	26,388	28,896	3	55,287
Mutitu North.....	10,337	10,877	1	21,215
Mutomo.....	54,819	58,531	6	113,356
Mwingi Central.....	52,539	56,174	..	108,713
Mwingi East.....	40,314	44,820	5	85,139
Nzambani.....	22,929	23,857	2	46,788
Thagicu.....	7,141	7,994	1	15,136
Tseikuru.....	19,619	21,252	..	40,871
<b>Machakos</b> .....	<b>710,707</b>	<b>711,191</b>	<b>34</b>	<b>1,421,932</b>
Athi River.....	164,322	158,172	5	322,499
Kalama.....	26,764	27,692	6	54,462
Kangundo.....	48,697	49,219	1	97,917
Kathiani.....	54,910	56,976	4	111,890
Machakos.....	85,486	85,114	6	170,606
Masinga.....	73,519	75,001	2	148,522
Matungulu.....	81,145	80,407	5	161,557
Mwala.....	90,427	91,466	3	181,896
Yatta.....	85,437	87,144	2	172,583

\*Demarcated as a special area to ensure complete coverage during census enumeration



Table 2.5: Distribution of Population by Sex and Sub-County, Cont'd

National/ County	Sex			Total
	Male	Female	Intersex	
<b>Makueni.....</b>	<b>489,691</b>	<b>497,942</b>	<b>20</b>	<b>987,653</b>
Kathonzweni.....	39,335	40,442	3	79,780
Kibwezi.....	98,477	98,517	6	197,000
Kilungu.....	29,019	31,932	1	60,952
Makindu.....	42,204	42,742	..	84,946
Makueni.....	65,418	64,955	2	130,375
Mbooni East.....	48,152	49,601	3	97,756
Mbooni West.....	49,434	53,159	1	102,594
Mukaa.....	54,481	53,068	..	107,549
Nzaui.....	63,171	63,526	4	126,701
<b>Nyandarua.....</b>	<b>315,022</b>	<b>323,247</b>	<b>20</b>	<b>638,289</b>
Kinangop.....	54,727	56,679	4	111,410
Nyandarua South.....	46,157	47,708	5	93,870
Mirangine.....	33,447	33,766	1	67,214
Kipipiri.....	46,113	47,740	2	93,855
Nyandarua Central.....	37,329	37,931	2	75,262
Nyandarua West.....	48,752	49,209	4	97,965
Nyandarua North.....	48,486	50,210	2	98,698
Aberdare National Park*..	11	4	..	15
<b>Nyeri.....</b>	<b>374,288</b>	<b>384,845</b>	<b>31</b>	<b>759,164</b>
Tetu.....	39,293	41,155	5	80,453
Kieni East.....	55,360	55,012	4	110,376
Kieni West.....	43,843	44,677	5	88,525
Mathira East.....	48,070	50,992	3	99,065
Mathira West.....	29,480	30,412	3	59,895
Nyeri South.....	44,115	46,964	2	91,081
Mukurwe-ini.....	43,975	45,156	6	89,137
Nyeri Central.....	69,955	70,380	3	140,338
Mt. Kenya Forest*.....	123	65	..	188
Aberdare Forest*.....	74	32	..	106
<b>Kirinyaga.....</b>	<b>302,011</b>	<b>308,369</b>	<b>31</b>	<b>610,411</b>
Kirinyaga Central.....	60,118	62,617	5	122,740
Kirinyaga East.....	67,037	68,514	8	135,559
Kirinyaga West.....	56,154	58,502	4	114,660
Mwea East.....	66,432	66,114	8	132,554
Mwea West.....	52,228	52,594	6	104,828
Mt. Kenya Forest*.....	42	28	..	70
<b>Murang'a.....</b>	<b>523,940</b>	<b>532,669</b>	<b>31</b>	<b>1,056,640</b>
Murang'a East.....	54,665	55,645	1	110,311
Kangema.....	39,582	40,862	3	80,447
Mathioya.....	45,454	47,359	1	92,814
Kahuro.....	43,352	44,834	7	88,193
Murang'a South.....	91,732	93,087	5	184,824
Gatanga.....	94,437	93,548	4	187,989
Kigumo.....	67,989	68,929	3	136,921
Kandara.....	86,698	88,393	7	175,098
Aberdare Forest*.....	31	12	..	43

\*Demarcated as a special area to ensure complete coverage during census enumeration

Table 2.5: Distribution of Population by Sex and Sub-County, Cont'd

National/ County	Sex			Total
	Male	Female	Intersex	
<b>Kiambu.....</b>	<b>1,187,146</b>	<b>1,230,454</b>	<b>135</b>	<b>2,417,735</b>
Gatundu North.....	54,189	55,678	3	109,870
Gatundu South.....	60,384	61,714	5	122,103
Githunguri.....	82,037	83,187	8	165,232
Juja.....	148,446	152,480	22	300,948
Kabete.....	97,794	101,845	14	199,653
Kiambaa.....	115,690	120,695	15	236,400
Kiambu.....	69,661	76,225	17	145,903
Kikuyu.....	90,919	96,198	5	187,122
Lari.....	67,061	68,238	4	135,303
Limuru.....	79,632	79,682	..	159,314
Ruiru.....	180,947	190,144	20	371,111
Thika East.....	19,688	19,264	4	38,956
Thika West.....	120,698	125,104	18	245,820
<b>Turkana.....</b>	<b>478,087</b>	<b>448,868</b>	<b>21</b>	<b>926,976</b>
Kibish.....	18,651	18,117	1	36,769
Loima.....	54,341	53,453	1	107,795
Turkana Central.....	93,145	92,160	..	185,305
Turkana East.....	76,871	61,643	12	138,526
Turkana North.....	32,810	32,408	..	65,218
Turkana South.....	78,402	75,329	5	153,736
Turkana West.....	123,867	115,758	2	239,627
<b>West Pokot.....</b>	<b>307,013</b>	<b>314,213</b>	<b>15</b>	<b>621,241</b>
Kipkomo.....	50,923	51,703	7	102,633
Pokot Central.....	59,682	59,331	3	119,016
Pokot North.....	64,780	69,702	3	134,485
Pokot South.....	39,808	40,851	2	80,661
West Pokot.....	91,820	92,626	..	184,446
<b>Samburu.....</b>	<b>156,774</b>	<b>153,546</b>	<b>7</b>	<b>310,327</b>
Samburu Central.....	83,633	81,307	2	164,942
Samburu East.....	38,211	39,782	1	77,994
Samburu North.....	34,930	32,457	4	67,391
<b>Trans Nzoia.....</b>	<b>489,107</b>	<b>501,206</b>	<b>28</b>	<b>990,341</b>
Trans Nzoia West.....	101,198	101,174	5	202,377
Trans Nzoia East.....	113,498	116,029	11	229,538
Kwanza.....	100,234	103,584	3	203,821
Endebess.....	56,090	55,689	3	111,782
Kiminini.....	118,087	124,730	6	242,823
<b>Uasin Gishu.....</b>	<b>580,269</b>	<b>582,889</b>	<b>28</b>	<b>1,163,186</b>
Ainabkoi.....	68,348	69,835	1	138,184
Kapseret.....	99,650	98,845	4	198,499
Kesses.....	74,301	74,493	4	148,798
Moiben.....	90,309	91,027	2	181,338
Soy.....	114,082	115,007	5	229,094
Turbo.....	133,579	133,682	12	267,273

Table 2.5: Distribution of Population by Sex and Sub-County, Cont'd

National/ County	Sex			Total
	Male	Female	Intersex	
<b>Elgeyo/Marakwet.....</b>	<b>227,317</b>	<b>227,151</b>	<b>12</b>	<b>454,480</b>
Keiyo North.....	49,601	49,574	1	99,176
Keiyo South.....	60,919	59,827	4	120,750
Marakwet East.....	47,849	49,190	2	97,041
Marakwet West.....	68,948	68,560	5	137,513
<b>Nandi.....</b>	<b>441,259</b>	<b>444,430</b>	<b>22</b>	<b>885,711</b>
Chesumei.....	80,949	83,180	4	164,133
Nandi Central.....	73,291	74,255	7	147,553
Nandi East.....	59,899	59,271	3	119,173
Nandi North.....	82,512	83,656	3	166,171
Nandi South.....	85,718	87,029	3	172,750
Tinderet.....	58,890	57,039	2	115,931
<b>Baringo.....</b>	<b>336,322</b>	<b>330,428</b>	<b>13</b>	<b>666,763</b>
Baringo Central.....	48,120	48,829	2	96,951
Baringo North.....	52,369	52,500	2	104,871
East Pokot.....	40,462	39,459	2	79,923
Koibatek.....	65,295	64,238	2	129,535
Marigat.....	45,706	45,246	3	90,955
Mogotio.....	46,014	45,088	2	91,104
Tiaty East.....	38,356	35,068	..	73,424
<b>Laikipia.....</b>	<b>259,440</b>	<b>259,102</b>	<b>18</b>	<b>518,560</b>
Laikipia Central.....	47,888	47,705	1	95,594
Laikipia East.....	52,078	50,732	5	102,815
Laikipia North.....	18,067	18,116	1	36,184
Laikipia West.....	65,158	64,102	3	129,263
Nyahururu.....	76,249	78,447	8	154,704
<b>Nakuru.....</b>	<b>1,077,272</b>	<b>1,084,835</b>	<b>95</b>	<b>2,162,202</b>
Gilgil.....	92,955	92,247	7	185,209
Kuresoi North.....	87,472	87,599	3	175,074
Kuresoi South.....	78,204	77,117	3	155,324
Molo.....	78,129	78,598	5	156,732
Naivasha.....	179,222	176,132	29	355,383
Nakuru East.....	92,956	100,960	10	193,926
Nakuru North.....	106,155	111,880	15	218,050
Nakuru West.....	101,797	96,854	10	198,661
Njoro.....	118,361	120,408	4	238,773
Rongai.....	99,976	99,922	8	199,906
Subukia.....	42,045	43,118	1	85,164
<b>Narok.....</b>	<b>579,042</b>	<b>578,805</b>	<b>26</b>	<b>1,157,873</b>
Narok East.....	58,699	56,617	7	115,323
Narok North.....	128,024	123,829	9	251,862
Narok South.....	118,441	120,029	2	238,472
Narok West.....	97,085	98,198	4	195,287
Trans Mara East.....	54,545	56,637	1	111,183
Trans Mara West.....	122,220	123,491	3	245,714
Mau Forest*.....	28	4	..	32

\*Demarcated as a special area to ensure complete coverage during census enumeration

Table 2.5: Distribution of Population by Sex and Sub-County, Cont'd

National/ County	Sex			Total
	Male	Female	Intersex	
<b>Kajiado</b> .....	<b>557,098</b>	<b>560,704</b>	<b>38</b>	<b>1,117,840</b>
Isinya.....	105,607	104,860	6	210,473
Kajiado Central.....	81,514	80,343	5	161,862
Kajiado North.....	150,675	155,908	13	306,596
Kajiado West.....	91,607	91,237	5	182,849
Loitokitok.....	94,613	97,225	8	191,846
Mashuuru.....	33,082	31,131	1	64,214
<b>Kericho</b> .....	<b>450,741</b>	<b>451,008</b>	<b>28</b>	<b>901,777</b>
Belgut.....	72,508	72,564	..	145,072
Bureti.....	98,823	100,642	5	199,470
Kericho East.....	86,671	83,947	7	170,625
Kipkelion.....	61,066	61,460	4	122,530
Londiani.....	68,570	69,000	10	137,580
Soin Sigowet.....	63,103	63,395	2	126,500
<b>Bomet</b> .....	<b>434,287</b>	<b>441,379</b>	<b>23</b>	<b>875,689</b>
Bomet East.....	71,095	73,172	8	144,275
Chepalungu.....	79,921	84,912	4	164,837
Konoin.....	83,120	80,384	3	163,507
Sotik.....	112,369	115,482	4	227,855
Bomet Central.....	87,782	87,429	4	175,215
<b>Kakamega</b> .....	<b>897,133</b>	<b>970,406</b>	<b>40</b>	<b>1,867,579</b>
Butere.....	73,634	80,463	3	154,100
Kakamega Central.....	92,774	95,432	6	188,212
Kakamega East.....	80,853	86,784	4	167,641
Kakamega North.....	115,511	122,814	5	238,330
Kakamega South.....	53,219	58,524	..	111,743
Khwisero.....	53,670	59,803	3	113,476
Likuyani.....	73,710	78,341	4	152,055
Lugari.....	59,135	63,593	..	122,728
Matete.....	31,749	34,423	..	66,172
Matungu.....	78,793	88,143	4	166,940
Mumias East.....	55,895	60,953	3	116,851
Mumias West.....	54,915	60,438	1	115,354
Navakholo.....	73,275	80,695	7	153,977
<b>Vihiga</b> .....	<b>283,678</b>	<b>306,323</b>	<b>12</b>	<b>590,013</b>
Emuhaya.....	46,507	50,633	1	97,141
Vihiga.....	45,788	49,501	3	95,292
Sabatia.....	62,944	68,683	1	131,628
Luanda.....	51,525	55,165	4	106,694
Hamisi.....	76,901	82,337	3	159,241
Kakamega Forest*.....	13	4	..	17

\*Demarcated as a special area to ensure complete coverage during census enumeration

Table 2.5: Distribution of Population by Sex and Sub-County, Cont'd

National/ County	Sex			Total
	Male	Female	Intersex	
<b>Bungoma</b> .....	<b>812,146</b>	<b>858,389</b>	<b>35</b>	<b>1,670,570</b>
Bumula.....	103,368	112,523	1	215,892
Bungoma Central.....	86,302	91,438	8	177,748
Bungoma East.....	55,775	58,771	2	114,548
Bungoma North.....	58,790	62,526	1	121,317
Bungoma South.....	139,705	148,055	5	287,765
Cheptais.....	67,717	68,312	6	136,035
Kimilili-Bungoma.....	78,560	83,475	3	162,038
Mt. Elgon.....	38,977	39,893	3	78,873
Bungoma West.....	58,225	61,649	1	119,875
Tongaren.....	48,685	51,657	1	100,343
Webuye West.....	74,180	78,331	4	152,515
Mt. Elgon Forest*.....	1,862	1,759	..	3,621
<b>Busia</b> .....	<b>426,252</b>	<b>467,401</b>	<b>28</b>	<b>893,681</b>
Bunyala.....	41,465	44,511	1	85,977
Busia.....	69,034	73,373	1	142,408
Butula.....	65,136	75,195	3	140,334
Nambale.....	52,900	58,732	4	111,636
Samia.....	50,821	56,341	14	107,176
Teso North.....	66,412	71,619	3	138,034
Teso South.....	80,484	87,630	2	168,116
<b>Siaya</b> .....	<b>471,669</b>	<b>521,496</b>	<b>18</b>	<b>993,183</b>
Siaya.....	105,906	118,433	4	224,343
Gem.....	85,696	94,092	4	179,792
Ugenya.....	62,624	71,726	4	134,354
Ugunja.....	48,912	55,329	..	104,241
Bondo.....	95,962	101,917	4	197,883
Rarieda.....	72,569	79,999	2	152,570
<b>Kisumu</b> .....	<b>560,942</b>	<b>594,609</b>	<b>23</b>	<b>1,155,574</b>
Kisumu East.....	108,304	112,689	4	220,997
Kisumu Central.....	84,155	89,985	5	174,145
Kisumu West.....	85,697	87,121	3	172,821
Seme.....	57,658	64,007	2	121,667
Muhoroni.....	76,770	77,345	1	154,116
Nyando.....	77,121	84,380	7	161,508
Nyakach.....	71,237	79,082	1	150,320
<b>Homa Bay</b> .....	<b>539,560</b>	<b>592,367</b>	<b>23</b>	<b>1,131,950</b>
Homa Bay.....	55,756	61,681	2	117,439
Ndhiwa.....	103,706	114,422	8	218,136
Rachuonyo North.....	85,409	93,273	4	178,686
Rachuonyo East.....	57,709	64,111	2	121,822
Rachuonyo South.....	61,663	69,151	..	130,814
Rangwe.....	55,404	62,325	3	117,732
Suba North.....	60,530	64,406	2	124,938
Suba South.....	59,383	62,998	2	122,383

\*Demarcated as a special area to ensure complete coverage during census enumeration

Table 2.5: Distribution of Population by Sex and Sub-County, Cont'd

National/ County	Sex			Total
	Male	Female	Intersex	
<b>Migori</b> .....	<b>536,187</b>	<b>580,214</b>	<b>35</b>	<b>1,116,436</b>
Awendo.....	56,348	60,939	3	117,290
Kuria East.....	46,969	49,894	9	96,872
Kuria West.....	101,090	107,417	6	208,513
Nyatike.....	83,989	92,164	9	176,162
Rongo.....	59,257	65,329	1	124,587
Suna East.....	58,977	63,694	3	122,674
Suna West.....	61,430	67,459	1	128,890
Uriri.....	68,127	73,318	3	141,448
<b>Kisii</b> .....	<b>605,784</b>	<b>661,038</b>	<b>38</b>	<b>1,266,860</b>
Etago.....	40,137	43,647	3	83,787
Gucha.....	39,631	44,108	1	83,740
Gucha South.....	40,022	43,598	3	83,623
Kenyenya.....	62,859	68,878	3	131,740
Kisii Central.....	81,330	85,573	3	166,906
Kisii South.....	64,514	70,615	5	135,134
Kitutu Central.....	74,608	79,561	6	154,175
Marani.....	50,598	56,864	2	107,464
Masaba South.....	58,143	64,248	5	122,396
Nyamache.....	62,113	68,782	3	130,898
Sameta.....	31,829	35,164	4	66,997
<b>Nyamira</b> .....	<b>290,907</b>	<b>314,656</b>	<b>13</b>	<b>605,576</b>
Borabu.....	36,736	36,431	..	73,167
Manga.....	44,868	49,339	2	94,209
Masaba North.....	52,884	58,974	2	111,860
Nyamira North.....	80,314	86,947	6	167,267
Nyamira South.....	76,105	82,965	3	159,073
<b>Nairobi City</b> .....	<b>2,192,452</b>	<b>2,204,376</b>	<b>245</b>	<b>4,397,073</b>
Dagoretti.....	217,651	216,526	31	434,208
Embakasi.....	492,476	496,270	62	988,808
Kamukunji.....	136,670	131,599	7	268,276
Kasarani.....	381,234	399,385	37	780,656
Kibra.....	94,199	91,569	9	185,777
Lang'ata.....	96,698	100,774	17	197,489
Makadara.....	96,369	93,157	10	189,536
Mathare.....	106,522	100,028	14	206,564
Njiru.....	307,642	318,809	31	626,482
Starehe.....	109,173	101,238	12	210,423
Westlands.....	153,818	155,021	15	308,854

**Table 2.6: Distribution of Population, Number of Households and Average Household Size by Sub-County**

National/ County	Population+	Number of Households	Average Household size
<b>Kenya</b> .....	<b>47,213,282</b>	<b>12,143,913</b>	<b>3.9</b>
<b>County/ Sub County</b>			
<b>Mombasa</b> .....	<b>1,190,987</b>	<b>378,422</b>	3.1
Changamwe.....	130,541	46,614	2.8
Jomvu.....	162,760	53,472	3.0
Kisauni.....	287,131	88,202	3.3
Likoni.....	249,230	81,191	3.1
Mvita.....	147,983	38,995	3.8
Nyali.....	213,342	69,948	3.1
<b>Kwale</b> .....	<b>858,748</b>	<b>173,176</b>	<b>5.0</b>
Kinango.....	93,789	16,043	5.8
Lungalunga.....	198,195	37,366	5.3
Matuga.....	192,999	39,231	4.9
Msambweni.....	173,213	45,466	3.8
Samburu-Kwale.....	200,552	35,070	5.7
<b>Kilifi</b> .....	<b>1,440,958</b>	<b>298,472</b>	4.8
Chonyi.....	62,318	11,421	5.5
Ganze.....	143,590	23,258	<b>6.2</b>
Kaloleni.....	192,905	36,355	5.3
Kauma.....	22,613	3,479	6.5
Kilifi North.....	177,527	39,512	4.5
Kilifi South.....	203,891	53,074	3.8
Magarini.....	190,644	33,017	5.8
Malindi.....	326,991	73,547	4.4
Rabai.....	120,479	24,809	4.9
<b>Tana River</b> .....	<b>314,710</b>	<b>68,242</b>	<b>4.6</b>
Tana North.....	110,293	22,791	4.8
Tana Delta.....	116,463	26,886	4.3
Tana River.....	87,954	18,565	4.7
<b>Lamu</b> .....	<b>141,909</b>	<b>37,963</b>	<b>3.7</b>
Lamu East.....	22,212	5,090	4.4
Lamu West.....	119,697	32,873	3.6
<b>Taita/Taveta</b> .....	<b>335,747</b>	<b>96,429</b>	3.5
Mwatate.....	81,389	23,698	3.4
Taita.....	55,643	15,094	3.7
Taveta.....	89,319	24,115	3.7
Voi.....	109,396	33,522	3.3
<b>Garissa</b> .....	<b>835,482</b>	<b>141,394</b>	5.9
Balambala.....	31,819	4,337	7.3
Dadaab.....	183,410	35,793	5.1
Fafi.....	133,286	23,671	5.6
Garissa.....	161,951	30,518	5.3
Hulugho.....	133,746	20,254	6.6
Ijara.....	141,418	18,481	7.7
Lagdera.....	49,852	8,340	6.0

+ Excludes the special population (travellers, outdoor sleepers, individuals in hotels and lodges and persons in institutions).

**Table 2.6: Distribution of Population, Number of Households and Average Household Size by Sub-County, Cont'd**

National/ County	Population+	Number of Households	Average Household size
<b>Wajir.....</b>	<b>775,302</b>	<b>127,932</b>	<b>6.1</b>
Buna.....	48,117	6,480	7.4
Eldas.....	88,310	13,892	6.4
Habaswein.....	173,446	31,292	5.5
Tarbaj.....	56,983	9,378	6.1
Wajir East.....	109,316	18,674	5.9
Wajir North.....	61,867	10,490	5.9
Wajir South.....	116,225	21,364	5.4
Wajir West.....	121,038	16,362	7.4
<b>Mandera.....</b>	<b>862,079</b>	<b>125,763</b>	<b>6.9</b>
Mandera West.....	97,983	14,274	6.9
Banisa.....	152,043	24,285	6.3
Kutulo.....	71,602	9,446	7.6
Lafey.....	83,001	11,597	7.2
Mandera Central.....	156,623	21,140	7.4
Mandera East.....	158,586	25,904	6.1
Mandera North.....	142,241	19,117	7.4
<b>Marsabit.....</b>	<b>447,150</b>	<b>77,495</b>	<b>5.8</b>
Loiyangalani.....	35,274	7,774	4.5
Marsabit Central.....	78,167	15,849	4.9
Marsabit North.....	49,056	7,521	6.5
Marsabit South.....	64,937	11,615	5.6
Moyale.....	108,223	17,709	6.1
North Horr.....	67,154	9,789	6.9
Sololo.....	44,339	7,238	6.1
<b>Isiolo.....</b>	<b>267,997</b>	<b>58,072</b>	<b>4.6</b>
Garbatulla.....	99,730	18,661	5.3
Isiolo.....	121,061	29,853	4.1
Merti.....	47,206	9,558	4.9
<b>Meru.....</b>	<b>1,535,635</b>	<b>426,360</b>	<b>3.6</b>
Buuri East.....	75,943	23,834	3.2
Buuri West.....	80,419	27,973	2.9
Igembe Central.....	219,887	52,031	4.2
Igembe North.....	168,903	38,871	4.3
Igembe South.....	160,851	43,281	3.7
Imenti North.....	173,876	57,668	3.0
Imenti South.....	205,487	64,186	3.2
Meru Central.....	133,165	39,595	3.4
Tigania Central.....	104,558	25,039	4.2
Tigania East.....	72,471	17,185	4.2
Tigania West.....	139,312	36,207	3.8
Meru National Park*.....	317	207	1.5
Mt. Kenya Forest*.....	446	283	1.6

+ Excludes the special population (travellers, outdoor sleepers, individuals in hotels and lodges and persons in institutions).

\*Demarcated as a special area to ensure complete coverage during census enumeration



**Table 2.6: Distribution of Population, Number of Households and Average Household Size by Sub-County, Cont'd**

National/ County	Population+	Number of Households	Average Household size
<b>Tharaka-Nithi</b> .....	<b>391,303</b>	<b>109,860</b>	<b>3.6</b>
Igambang'ombe.....	52,802	14,398	3.7
Maara.....	114,734	35,041	3.3
Meru South.....	90,520	28,249	3.2
Tharaka North.....	58,252	13,413	4.3
Tharaka South.....	74,824	18,646	4.0
Mt. Kenya Forest*.....	171	113	1.5
<b>Embu</b> .....	<b>604,769</b>	<b>182,743</b>	<b>3.3</b>
Embu East.....	129,097	39,678	3.3
Embu North.....	79,465	24,300	<b>3.3</b>
Embu West.....	124,616	43,153	2.9
Mbeere South.....	162,918	46,065	3.5
Mbeere North.....	108,651	29,528	3.7
Mt. Kenya Forest*.....	22	19	1.2
<b>Kitui</b> .....	<b>1,130,134</b>	<b>262,942</b>	<b>4.3</b>
Ikutha.....	82,463	16,679	4.9
Katulani.....	46,913	12,170	3.9
Kisasi.....	46,003	10,866	<b>4.2</b>
Kitui Central.....	104,128	29,057	3.6
Kitui West.....	70,635	17,497	4.0
Kyuso.....	76,452	15,993	4.8
Lower Yatta.....	62,938	15,454	4.1
Matinyani.....	47,802	11,513	4.2
Migwani.....	79,066	19,096	4.1
Mumoni.....	29,321	6,496	4.5
Mutitu.....	55,136	11,521	<b>4.8</b>
Mutitu North.....	21,128	4,929	4.3
Mutomo.....	112,703	23,044	4.9
Mwingi Central.....	107,973	26,753	4.0
Mwingi East.....	84,973	18,730	<b>4.5</b>
Nzambani.....	46,710	11,276	4.1
Thagicu.....	15,096	3,289	4.6
Tseikuru.....	40,694	8,579	4.7
<b>Machakos</b> .....	<b>1,414,022</b>	<b>402,466</b>	<b>3.5</b>
Athi River.....	319,526	109,735	2.9
Kalama.....	54,408	14,182	3.8
Kangundo.....	97,700	26,142	3.7
Kathiani.....	111,757	28,730	3.9
Machakos.....	168,255	50,979	3.3
Masinga.....	148,181	36,251	4.1
Matungulu.....	161,080	44,454	3.6
Mwala.....	181,671	45,840	4.0
Yatta.....	171,444	46,153	3.7

+ Excludes the special population (travellers, outdoor sleepers, individuals in hotels and lodges and persons in institutions).

\*Demarcated as a special area to ensure complete coverage during census enumeration

**Table 2.6: Distribution of Population, Number of Households and Average Household Size by Sub-County, Cont'd**

National/ County	Population+	Number of Households	Average Household size
<b>Makueni.....</b>	<b>977,015</b>	<b>244,669</b>	<b>4.0</b>
Kathonzweni.....	79,281	18,365	4.3
Kibwezi.....	194,004	47,912	4.0
Kilungu.....	60,869	14,586	4.2
Makindu.....	83,391	21,756	3.8
Makueni.....	128,880	34,479	3.7
Mbooni East.....	97,523	23,734	4.1
Mbooni West.....	102,292	24,833	4.1
Mukaa.....	106,239	28,185	3.8
Nzaui.....	124,536	30,819	4.0
<b>Nyandarua.....</b>	<b>636,002</b>	<b>179,686</b>	<b>3.5</b>
Kinangop.....	111,119	30,970	3.6
Nyandarua South.....	93,228	25,822	3.6
Mirangine.....	67,121	18,816	3.6
Kipipiri.....	93,698	25,200	3.7
Nyandarua Central.....	74,835	21,942	3.4
Nyandarua West.....	97,590	29,008	3.4
Nyandarua North.....	98,396	27,917	3.5
Aberdare National Park*..	15	11	1.4
<b>Nyeri.....</b>	<b>752,695</b>	<b>248,050</b>	<b>3.0</b>
Tetu.....	80,283	24,139	3.3
Kieni East.....	109,624	36,835	3.0
Kieni West.....	88,014	27,619	3.2
Mathira East.....	98,425	35,044	2.8
Mathira West.....	59,729	19,020	3.1
Nyeri South.....	90,803	28,228	3.2
Mukurwe-ini.....	88,674	27,040	3.3
Nyeri Central.....	136,849	49,945	2.7
Mt. Kenya Forest*.....	188	101	1.9
Aberdare Forest*.....	106	79	1.3
<b>Kirinyaga.....</b>	<b>605,630</b>	<b>204,188</b>	<b>3.0</b>
Kirinyaga Central.....	121,419	40,225	3.0
Kirinyaga East.....	135,085	44,571	3.0
Kirinyaga West.....	114,191	38,309	3.0
Mwea East.....	130,571	46,340	2.8
Mwea West.....	104,327	34,720	3.0
Mt. Kenya Forest*.....	37	23	1.6
<b>Murang'a.....</b>	<b>1,053,059</b>	<b>318,105</b>	<b>3.3</b>
Murang'a East.....	108,675	34,734	3.1
Kangema.....	80,189	25,293	3.2
Mathioya.....	92,656	28,400	3.3
Kahuro.....	88,059	26,930	3.3
Murang'a South.....	184,190	55,998	3.3
Gatanga.....	187,631	55,461	3.4
Kigumo.....	136,827	40,552	3.4
Kandara.....	174,789	50,704	3.4
Aberdare Forest*.....	43	33	1.3

+ Excludes the special population (travellers, outdoor sleepers, individuals in hotels and lodges and persons in institutions).

\*Demarcated as a special area to ensure complete coverage during census enumeration

**Table 2.6: Distribution of Population, Number of Households and Average Household Size by Sub-County, Cont'd**

National/ County	Population+	Number of Households	Average Household size
<b>Kiambu.....</b>	<b>2,402,834</b>	<b>795,241</b>	<b>3.0</b>
Gatundu North.....	109,654	31,472	3.5
Gatundu South.....	121,693	35,609	3.4
Githunguri.....	164,939	49,426	3.3
Juja.....	299,671	104,301	2.9
Kabete.....	199,114	66,710	3.0
Kiambaa.....	235,858	80,332	2.9
Kiambu.....	144,241	47,275	3.1
Kikuyu.....	186,093	60,686	3.1
Lari.....	134,651	38,592	3.5
Limuru.....	157,873	49,174	3.2
Ruiru.....	369,618	129,470	2.9
Thika East.....	38,573	12,736	3.0
Thika West.....	240,856	89,458	2.7
<b>Turkana.....</b>	<b>922,210</b>	<b>164,519</b>	<b>5.6</b>
Kibish.....	36,401	5,805	6.3
Loima.....	106,625	19,438	5.5
Turkana Central.....	183,121	38,173	4.8
Turkana East.....	138,265	17,981	7.7
Turkana North.....	65,125	13,119	5.0
Turkana South.....	153,350	24,552	6.2
Turkana West.....	239,323	45,451	5.3
<b>West Pokot.....</b>	<b>618,867</b>	<b>116,182</b>	<b>5.3</b>
Kipkomo.....	102,311	18,370	5.6
Pokot Central.....	118,721	21,850	5.4
Pokot North.....	134,012	25,804	5.2
Pokot South.....	80,590	13,817	5.8
West Pokot.....	183,233	36,341	5.0
<b>Samburu.....</b>	<b>307,957</b>	<b>65,910</b>	<b>4.7</b>
Samburu Central.....	163,942	34,202	4.8
Samburu East.....	77,136	18,424	4.2
Samburu North.....	66,879	13,284	5.0
<b>Trans Nzoia.....</b>	<b>985,333</b>	<b>223,808</b>	<b>4.4</b>
Trans Nzoia West.....	199,644	47,603	4.2
Trans Nzoia East.....	229,117	50,017	4.6
Kwanza.....	203,586	45,752	4.4
Endebess.....	111,681	23,705	4.7
Kiminini.....	241,305	56,731	4.3
<b>Uasin Gishu.....</b>	<b>1,152,671</b>	<b>304,943</b>	<b>3.8</b>
Ainabkoi.....	137,117	34,892	3.9
Kapseret.....	196,883	59,746	3.3
Kesses.....	148,228	34,653	4.3
Moiben.....	178,105	46,729	3.8
Soy.....	228,219	53,784	4.2
Turbo.....	264,119	75,139	3.5

+ Excludes the special population (travellers, outdoor sleepers, individuals in hotels and lodges and persons in institutions).

**Table 2.6: Distribution of Population, Number of Households and Average Household Size by Sub-County, Cont'd**

National/ County	Population+	Number of Households	Average Household size
<b>Elgeyo/Marakwet.....</b>	<b>453,403</b>	<b>99,861</b>	<b>4.5</b>
Keiyo North.....	98,683	21,947	4.5
Keiyo South.....	120,643	27,029	4.5
Marakwet East.....	96,897	21,362	4.5
Marakwet West.....	137,180	29,523	4.6
<b>Nandi.....</b>	<b>883,634</b>	<b>199,426</b>	<b>4.4</b>
Chesumei.....	163,564	39,051	4.2
Nandi Central.....	146,634	34,400	4.3
Nandi East.....	118,997	29,253	4.1
Nandi North.....	166,023	35,297	4.7
Nandi South.....	172,672	37,094	4.7
Tinderet.....	115,744	24,331	4.8
<b>Baringo.....</b>	<b>662,760</b>	<b>142,518</b>	<b>4.7</b>
Baringo Central.....	96,195	23,555	4.1
Baringo North.....	104,654	23,500	4.5
East Pokot.....	79,770	14,498	5.5
Koibatek.....	128,874	30,774	4.2
Marigat.....	89,210	19,854	4.5
Mogotio.....	90,911	18,184	5.0
Tiaty East.....	73,146	12,153	6.0
<b>Laikipia.....</b>	<b>513,879</b>	<b>149,271</b>	<b>3.4</b>
Laikipia Central.....	95,281	30,372	3.1
Laikipia East.....	100,874	33,505	3.0
Laikipia North.....	35,870	7,752	4.6
Laikipia West.....	128,693	33,025	3.9
Nyahururu.....	153,161	44,617	3.4
<b>Nakuru.....</b>	<b>2,142,667</b>	<b>616,046</b>	<b>3.5</b>
Gilgil.....	182,862	58,920	3.1
Kuresoi North.....	174,898	40,359	4.3
Kuresoi South.....	154,998	34,627	4.5
Molo.....	156,279	41,462	3.8
Naivasha.....	349,067	117,633	3.0
Nakuru East.....	190,161	61,398	3.1
Nakuru North.....	217,425	61,728	3.5
Nakuru West.....	194,723	64,481	3.0
Njoro.....	238,233	61,271	3.9
Rongai.....	199,004	52,348	3.8
Subukia.....	85,017	21,819	3.9
<b>Narok.....</b>	<b>1,149,379</b>	<b>241,125</b>	<b>4.8</b>
Narok East.....	115,091	25,078	4.6
Narok North.....	250,105	59,996	4.2
Narok South.....	238,301	46,723	5.1
Narok West.....	190,237	38,658	4.9
Trans Mara East.....	111,119	20,506	5.4
Trans Mara West.....	244,494	50,132	4.9
Mau Forest*.....	32	32	1.0

+ Excludes the special population (travellers, outdoor sleepers, individuals in hotels and lodges and persons in institutions).

\*Demarcated as a special area to ensure complete coverage during census enumeration

**Table 2.6: Distribution of Population, Number of Households and Average Household Size by Sub-County, Cont'd**

National/ County	Population+	Number of Households	Average Household size
<b>Kajiado.....</b>	<b>1,107,296</b>	<b>316,179</b>	<b>3.5</b>
Isinya.....	207,715	71,579	2.9
Kajiado Central.....	159,520	37,238	4.3
Kajiado North.....	304,404	101,378	3.0
Kajiado West.....	181,622	42,774	4.2
Loitokitok.....	190,174	47,058	4.0
Mashuuru.....	63,861	16,152	4.0
<b>Kericho.....</b>	<b>896,863</b>	<b>206,036</b>	<b>4.4</b>
Belgut.....	144,882	35,012	4.1
Bureti.....	198,781	43,117	4.6
Kericho East.....	167,898	44,246	3.8
Kipkelion.....	122,380	24,688	5.0
Londiani.....	137,013	31,778	4.3
Soin Sigowet.....	125,909	27,195	4.6
<b>Bomet.....</b>	<b>873,023</b>	<b>187,641</b>	<b>4.7</b>
Bomet East.....	143,816	29,958	4.8
Chepalungu.....	164,710	33,931	4.9
Konoin.....	163,359	38,178	4.3
Sotik.....	227,380	47,315	4.8
Bomet Central.....	173,758	38,259	4.5
<b>Kakamega.....</b>	<b>1,861,332</b>	<b>433,207</b>	<b>4.3</b>
Butere.....	153,926	36,243	4.2
Kakamega Central.....	185,625	52,015	3.6
Kakamega East.....	166,288	39,589	4.2
Kakamega North.....	238,093	51,083	4.7
Kakamega South.....	111,608	26,964	4.1
Khwisero.....	113,294	27,681	4.1
Likuyani.....	151,773	35,322	4.3
Lugari.....	122,584	27,862	4.4
Matete.....	66,155	13,956	4.7
Matungu.....	166,755	36,457	4.6
Mumias East.....	116,712	26,049	4.5
Mumias West.....	114,601	27,671	4.1
Navakholo.....	153,918	32,315	4.8
<b>Vihiga.....</b>	<b>587,189</b>	<b>143,365</b>	<b>4.1</b>
Emuhaya.....	97,035	23,804	4.1
Vihiga.....	94,509	23,375	4.0
Sabatia.....	130,851	31,422	4.2
Luanda.....	105,707	26,766	3.9
Hamisi.....	159,070	37,986	4.2
Kakamega Forest*.....	17	12	1.4

+ Excludes the special population (travellers, outdoor sleepers, individuals in hotels and lodges and persons in institutions).

\*Demarcated as a special area to ensure complete coverage during census enumeration

**Table 2.6: Distribution of Population, Number of Households and Average Household Size by Sub-County, Cont'd**

National/ County	Population+	Number of Households	Average Household size
<b>Bungoma</b> .....	<b>1,663,898</b>	<b>358,796</b>	<b>4.6</b>
Bumula.....	215,546	44,954	4.8
Bungoma Central.....	177,175	37,803	4.7
Bungoma East.....	114,242	24,873	4.6
Bungoma North.....	120,871	24,998	4.8
Bungoma South.....	284,662	69,151	4.1
Cheptais.....	135,864	26,326	5.2
Kimilili-Bungoma.....	161,628	35,263	4.6
Mt. Elgon.....	78,782	15,276	5.2
Bungoma West.....	119,585	25,172	4.8
Tongaren.....	100,268	21,343	4.7
Webuye West.....	151,654	32,839	4.6
Mt. Elgon Forest*.....	3,621	798	4.5
<b>Busia</b> .....	<b>886,856</b>	<b>198,152</b>	<b>4.5</b>
Bunyala.....	85,645	19,039	4.5
Busia.....	138,274	33,160	4.2
Butula.....	140,051	32,213	4.3
Nambale.....	111,543	23,892	4.7
Samia.....	107,004	23,884	4.5
Teso North.....	136,804	29,395	4.7
Teso South.....	167,535	36,569	4.6
<b>Siaya</b> .....	<b>989,708</b>	<b>250,698</b>	<b>3.9</b>
Siaya.....	223,182	57,553	3.9
Gem.....	179,570	44,884	4.0
Ugenya.....	134,166	33,565	4.0
Ugunja.....	103,892	26,328	3.9
Bondo.....	196,835	51,362	3.8
Rarieda.....	152,063	37,006	4.1
<b>Kisumu</b> .....	<b>1,144,777</b>	<b>300,745</b>	<b>3.8</b>
Kisumu East.....	219,996	61,871	3.6
Kisumu Central.....	170,592	52,331	3.3
Kisumu West.....	169,806	45,933	3.7
Seme.....	121,461	29,404	4.1
Muhoroni.....	151,799	37,193	4.1
Nyando.....	160,804	38,460	4.2
Nyakach.....	150,319	35,553	4.2
<b>Homa Bay</b> .....	<b>1,125,823</b>	<b>262,036</b>	<b>4.3</b>
Homa Bay.....	116,034	29,318	4.0
Ndhiwa.....	217,549	48,062	4.5
Rachuonyo North.....	178,036	41,809	4.3
Rachuonyo East.....	121,233	27,319	4.4
Rachuonyo South.....	130,212	30,990	4.2
Rangwe.....	117,128	27,003	4.3
Suba North.....	123,892	29,766	4.2
Suba South.....	121,739	27,769	4.4

+ Excludes the special population (travellers, outdoor sleepers, individuals in hotels and lodges and persons in institutions).

\*Demarcated as a special area to ensure complete coverage during census enumeration

**Table 2.6: Distribution of Population, Number of Households and Average Household Size by Sub-County, Cont'd**

National/ County	Population+	Number of Households	Average Household size
<b>Migori.....</b>	<b>1,108,950</b>	<b>240,168</b>	<b>4.6</b>
Awendo.....	116,268	27,033	4.3
Kuria East.....	96,455	17,363	5.6
Kuria West.....	207,528	39,781	5.2
Nyatike.....	175,180	40,257	4.4
Rongo.....	123,984	29,087	4.3
Suna East.....	121,365	27,302	4.4
Suna West.....	127,113	29,251	4.3
Uriri.....	141,057	30,094	4.7
<b>Kisii.....</b>	<b>1,260,509</b>	<b>308,054</b>	<b>4.1</b>
Etago.....	83,661	18,610	4.5
Gucha.....	83,098	19,657	4.2
Gucha South.....	83,209	19,732	4.2
Kenyenya.....	131,325	30,989	4.2
Kisii Central.....	163,782	44,311	3.7
Kisii South.....	134,940	31,696	4.3
Kitutu Central.....	153,686	41,271	3.7
Marani.....	107,230	26,186	4.1
Masaba South.....	122,149	29,232	4.2
Nyamache.....	130,666	30,712	4.3
Sameta.....	66,763	15,658	4.3
<b>Nyamira.....</b>	<b>603,051</b>	<b>150,669</b>	<b>4.0</b>
Borabu.....	72,797	19,468	3.7
Manga.....	94,056	23,869	3.9
Masaba North.....	110,914	27,913	4.0
Nyamira North.....	166,959	40,446	4.1
Nyamira South.....	158,325	38,973	4.1
<b>Nairobi City.....</b>	<b>4,337,080</b>	<b>1,506,888</b>	<b>2.9</b>
Dagoretti.....	432,331	155,089	2.8
Embakasi.....	983,232	347,955	2.8
Kamukunji.....	263,462	84,365	3.1
Kasarani.....	772,586	271,290	2.8
Kibra.....	181,509	61,690	2.9
Lang'ata.....	191,207	62,239	3.1
Makadara.....	188,792	70,361	2.7
Mathare.....	204,469	74,967	2.7
Njiru.....	623,471	204,563	3.0
Starehe.....	194,726	69,389	2.8
Westlands.....	301,295	104,980	2.9

+ Excludes the special population (travellers, outdoor sleepers, individuals in hotels and lodges and persons in institutions).

**Table 2.7: Distribution of Population by Land Area and Population Density by Sub-County**

National/ County	Population	Land Area (Sq. Km)	Population Density (No. per Sq. Km)
<b>Kenya</b> .....	<b>47,564,296</b>	<b>580,876.3</b>	<b>82</b>
<b>County/ Sub County</b>			
<b>Mombasa</b> .....	<b>1,208,333</b>	<b>219.9</b>	<b>5,495</b>
Changamwe.....	131,882	17.7	7,457
Jomvu.....	163,415	36.9	4,432
Kisauni.....	291,930	87.7	3,328
Likoni.....	250,358	40.5	6,187
Mita.....	154,171	14.6	10,543
Nyali.....	216,577	22.5	9,610
<b>Kwale</b> .....	<b>866,820</b>	<b>8,267.1</b>	<b>105</b>
Kinango.....	94,220	1,614.0	58
Lungalunga.....	198,423	2,765.2	72
Matuga.....	194,252	1,032.4	188
Msambweni.....	177,690	411.7	432
Samburu-Kwale.....	202,235	2,443.7	83
<b>Kilifi</b> .....	<b>1,453,787</b>	<b>12,539.7</b>	<b>116</b>
Chonyi.....	62,335	192.6	324
Ganze.....	143,906	3,204.4	45
Kaloleni.....	193,682	706.1	274
Kauma.....	22,638	181.4	125
Kilifi North.....	178,824	264.4	676
Kilifi South.....	206,753	290.5	712
Magarini.....	191,610	5,229.4	37
Malindi.....	333,226	2,263.3	147
Rabai.....	120,813	207.8	581
<b>Tana River</b> .....	<b>315,943</b>	<b>37,950.5</b>	<b>8</b>
Tana North.....	110,640	15,478.7	7
Tana Delta.....	116,757	13,306.1	9
Tana River.....	88,546	9,165.6	10
<b>Lamu</b> .....	<b>143,920</b>	<b>6,253.3</b>	<b>23</b>
Lamu East.....	22,258	2,336.7	10
Lamu West.....	121,662	3,916.6	31
<b>Taita/Taveta</b> .....	<b>340,671</b>	<b>17,152.0</b>	<b>20</b>
Mwatate.....	81,659	2,722.6	30
Taita.....	55,959	477.9	117
Taveta.....	91,222	6,398.7	14
Voi.....	111,831	7,552.8	15
<b>Garissa</b> .....	<b>841,353</b>	<b>44,736.0</b>	<b>19</b>
Balambala.....	32,257	3,684.1	9
Dadaab.....	185,252	6,479.8	29
Fafi.....	134,040	15,072.9	9
Garissa.....	163,914	3,230.7	51
Hulugho.....	133,984	7,733.2	17
Ijara.....	141,591	2,438.9	58
Lagdera.....	50,315	6,096.4	8



**Table 2.7: Distribution of Population by Land Area and Population Density by Sub-County, Cont'd**

National/ County	Population	Land Area (Sq. Km)	Population Density (No. per Sq. Km)
<b>Wajir.....</b>	<b>781,263</b>	<b>56,773.1</b>	<b>14</b>
Buna.....	49,886	3,892.8	13
Eldas.....	88,509	4,444.0	20
Habaswein.....	174,134	10,912.5	16
Tarbaj.....	57,232	9,650.9	6
Wajir East.....	110,654	4,055.1	27
Wajir North.....	62,206	4,042.9	15
Wajir South.....	116,814	10,732.6	11
Wajir West.....	121,828	9,042.3	13
<b>Mandera.....</b>	<b>867,457</b>	<b>25,939.8</b>	<b>33</b>
Mandera West.....	98,300	4,016.9	24
Banisa.....	152,598	3,942.7	39
Kutulo.....	72,394	2,509.3	29
Lafey.....	83,457	3,846.3	22
Mandera Central.....	157,220	4,031.6	39
Mandera East.....	159,638	2,505.7	64
Mandera North.....	143,850	5,087.3	28
<b>Marsabit.....</b>	<b>459,785</b>	<b>70,944.1</b>	<b>6</b>
Loiyangalani.....	35,713	11,789.2	3
Marsabit Central.....	79,181	2,142.8	37
Marsabit North.....	54,297	19,836.8	3
Marsabit South.....	65,376	8,447.4	8
Moyale.....	108,949	3,395.5	32
North Horr.....	71,447	19,336.7	4
Sololo.....	44,822	5,995.6	7
<b>Isiolo.....</b>	<b>268,002</b>	<b>25,350.6</b>	<b>11</b>
Garbatulla.....	99,730	9,902.0	10
Isiolo.....	121,066	2,691.3	45
Merti.....	47,206	12,757.3	4
<b>Meru.....</b>	<b>1,545,714</b>	<b>7,006.3</b>	<b>221</b>
Buuri East.....	76,598	332.9	230
Buuri West.....	80,762	638.7	126
Igembe Central.....	221,412	604.1	366
Igembe North.....	169,317	1,076.9	157
Igembe South.....	161,646	255.2	633
Imenti North.....	177,567	230.8	769
Imenti South.....	206,506	413.9	499
Meru Central.....	133,818	381.8	350
Tigania Central.....	104,730	237.4	441
Tigania East.....	72,549	507.9	143
Tigania West.....	139,961	398.6	351
Meru National Park*.....	385	868.1	0
Mt. Kenya Forest*.....	463	1,059.9	0

\*Demarcated as a special area to ensure complete coverage during census enumeration

**Table 2.7: Distribution of Population by Land Area and Population Density by Sub-County, Cont'd**

National/ County	Population	Land Area	Population Density
<b>Tharaka-Nithi.....</b>	<b>393,177</b>	<b>2,564.4</b>	<b>153</b>
Igambang'ombe.....	53,210	324.6	164
Maara.....	114,894	265.1	433
Meru South.....	91,080	138.8	656
Tharaka North.....	58,345	838.8	70
Tharaka South.....	75,250	637.0	118
Mt. Kenya Forest*.....	398	360.1	1
<b>Embu.....</b>	<b>608,599</b>	<b>2,820.7</b>	<b>216</b>
Embu East.....	129,564	253.3	512
Embu North.....	79,556	110.6	719
Embu West.....	127,100	158.1	804
Mbeere South.....	163,476	1,312.1	125
Mbeere North.....	108,881	783.6	139
Mt. Kenya Forest*.....	22	203.0	0
<b>Kitui.....</b>	<b>1,136,187</b>	<b>30,429.5</b>	<b>37</b>
Ikutha.....	82,964	9,033.1	9
Katulani.....	47,108	323.7	146
Kisasi.....	46,142	294.6	157
Kitui Central.....	105,991	421.8	251
Kitui West.....	70,871	416.4	170
Kyuso.....	76,867	2,524.5	30
Lower Yatta.....	63,329	1,191.0	53
Matinyani.....	47,811	264.2	181
Migwani.....	79,255	634.5	125
Mumoni.....	29,344	611.4	48
Mutitu.....	55,287	5,359.8	10
Mutitu North.....	21,215	548.3	39
Mutomo.....	113,356	2,202.9	51
Mwingi Central.....	108,713	1,146.4	95
Mwingi East.....	85,139	3,418.5	25
Nzambani.....	46,788	319.7	146
Thagicu.....	15,136	362.7	42
Tseikuru.....	40,871	1,356.0	30
<b>Machakos.....</b>	<b>1,421,932</b>	<b>6,042.7</b>	<b>235</b>
Athi River.....	322,499	827.2	390
Kalama.....	54,462	487.2	112
Kangundo.....	97,917	172.7	567
Kathiani.....	111,890	205.6	544
Machakos.....	170,606	280.2	609
Masinga.....	148,522	1,405.7	106
Matungulu.....	161,557	581.4	278
Mwala.....	181,896	1,020.3	178
Yatta.....	172,583	1,062.4	162

\*Demarcated as a special area to ensure complete coverage during census enumeration

**Table 2.7: Distribution of Population by Land Area and Population Density by Sub-County, Cont'd**

National/ County	Population	Land Area (Sq. Km)	Population Density (No. per Sq. Km)
<b>Makueni.....</b>	<b>987,653</b>	<b>8,169.8</b>	<b>121</b>
Kathonzweni.....	79,780	880.7	91
Kibwezi.....	197,000	3,137.4	63
Kilungu.....	60,952	154.3	395
Makindu.....	84,946	852.1	100
Makueni.....	130,375	609.3	214
Mbooni East.....	97,756	686.5	142
Mbooni West.....	102,594	270.7	379
Mukaa.....	107,549	803.7	134
Nzaui.....	126,701	775.2	163
<b>Nyandarua.....</b>	<b>638,289</b>	<b>3,285.7</b>	<b>194</b>
Kinangop.....	111,410	293.6	379
Nyandarua South.....	93,870	313.6	299
Mirangine.....	67,214	245.6	274
Kipipiri.....	93,855	456.3	206
Nyandarua Central.....	75,262	346.6	217
Nyandarua West.....	97,965	384.9	255
Nyandarua North.....	98,698	528.4	187
Aberdare National Park*..	15	716.7	0
<b>Nyeri.....</b>	<b>759,164</b>	<b>3,325.0</b>	<b>228</b>
Tetu.....	80,453	216.5	372
Kieni East.....	110,376	448.7	246
Kieni West.....	88,525	517.8	171
Mathira East.....	99,065	130.4	760
Mathira West.....	59,895	162.3	369
Nyeri South.....	91,081	169.2	538
Mukurwe-ini.....	89,137	179.1	498
Nyeri Central.....	140,338	167.6	837
Mt. Kenya Forest*.....	188	611.4	0
Aberdare Forest*.....	106	722.0	0
<b>Kirinyaga.....</b>	<b>610,411</b>	<b>1,478.3</b>	<b>413</b>
Kirinyaga Central.....	122,740	153.3	800
Kirinyaga East.....	135,559	231.8	585
Kirinyaga West.....	114,660	207.8	552
Mwea East.....	132,554	303.0	437
Mwea West.....	104,828	239.4	438
Mt. Kenya Forest*.....	70	343.0	0
<b>Murang'a.....</b>	<b>1,056,640</b>	<b>2,524.2</b>	<b>419</b>
Murang'a East.....	110,311	240.8	458
Kangema.....	80,447	173.7	463
Mathioya.....	92,814	177.5	523
Kahuro.....	88,193	169.4	521
Murang'a South.....	184,824	456.9	405
Gatanga.....	187,989	532.3	353
Kigumo.....	136,921	244.2	561
Kandara.....	175,098	234.6	746
Aberdare Forest*.....	43	294.7	0

\*Demarcated as a special area to ensure complete coverage during census enumeration

**Table 2.7: Distribution of Population by Land Area and Population Density by Sub-County, Cont'd**

National/ County	Population	Land Area (Sq. Km)	Population Density (No. per Sq. Km)
<b>Kiambu.....</b>	<b>2,417,735</b>	<b>2,538.6</b>	<b>952</b>
Gatundu North.....	109,870	285.9	384
Gatundu South.....	122,103	193.6	631
Githunguri.....	165,232	174.4	948
Juja.....	300,948	342.0	880
Kabete.....	199,653	60.7	3,289
Kiambaa.....	236,400	91.1	2,595
Kiambu.....	145,903	98.3	1,484
Kikuyu.....	187,122	172.9	1,082
Lari.....	135,303	432.3	313
Limuru.....	159,314	285.1	559
Ruiru.....	371,111	201.1	1,846
Thika East.....	38,956	109.9	354
Thika West.....	245,820	91.4	2,689
<b>Turkana.....</b>	<b>926,976</b>	<b>68,232.9</b>	<b>14</b>
Kibish.....	36,769	10,466.1	4
Loima.....	107,795	9,113.3	12
Turkana Central.....	185,305	6,415.2	29
Turkana East.....	138,526	11,395.6	12
Turkana North.....	65,218	7,012.2	9
Turkana South.....	153,736	7,051.5	22
Turkana West.....	239,627	16,778.9	14
<b>West Pokot.....</b>	<b>621,241</b>	<b>9,123.2</b>	<b>68</b>
Kipkomo.....	102,633	765.6	134
Pokot Central.....	119,016	2,055.2	58
Pokot North.....	134,485	3,910.9	34
Pokot South.....	80,661	536.7	150
West Pokot.....	184,446	1,854.8	99
<b>Samburu.....</b>	<b>310,327</b>	<b>21,065.1</b>	<b>15</b>
Samburu Central.....	164,942	3,674.4	45
Samburu East.....	77,994	10,015.9	8
Samburu North.....	67,391	7,374.8	9
<b>Trans Nzoia.....</b>	<b>990,341</b>	<b>2,495.2</b>	<b>397</b>
Trans Nzoia West.....	202,377	355.4	569
Trans Nzoia East.....	229,538	629.1	365
Kwanza.....	203,821	465.3	438
Endebess.....	111,782	678.4	165
Kiminini.....	242,823	366.9	662
<b>Uasin Gishu.....</b>	<b>1,163,186</b>	<b>3,392.2</b>	<b>343</b>
Ainabkoi.....	138,184	492.9	280
Kapseret.....	198,499	299.3	663
Kesses.....	148,798	731.0	204
Moiben.....	181,338	769.8	236
Soy.....	229,094	667.6	343
Turbo.....	267,273	431.4	620

**Table 2.7: Distribution of Population by Land Area and Population Density by Sub-County, Cont'd**

National/ County	Population	Land Area (Sq. Km)	Population Density (No. per Sq. Km)
<b>Elgeyo/Marakwet.....</b>	<b>454,480</b>	<b>3,032.0</b>	<b>150</b>
Keiyo North.....	99,176	543.2	183
Keiyo South.....	120,750	897.8	134
Marakwet East.....	97,041	853.2	114
Marakwet West.....	137,513	737.9	186
<b>Nandi.....</b>	<b>885,711</b>	<b>2,855.8</b>	<b>310</b>
Chesumei.....	164,133	474.6	346
Nandi Central.....	147,553	362.9	407
Nandi East.....	119,173	397.6	300
Nandi North.....	166,171	606.3	274
Nandi South.....	172,750	457.4	378
Tinderet.....	115,931	557.1	208
<b>Baringo.....</b>	<b>666,763</b>	<b>10,976.4</b>	<b>61</b>
Baringo Central.....	96,951	786.5	123
Baringo North.....	104,871	1,629.3	64
East Pokot.....	79,923	2,500.5	32
Koibatek.....	129,535	938.6	138
Marigat.....	90,955	1,453.4	63
Mogotio.....	91,104	1,375.3	66
Tiaty East.....	73,424	2,106.5	35
<b>Laikipia.....</b>	<b>518,560</b>	<b>9,532.2</b>	<b>54</b>
Laikipia Central.....	95,594	1,232.6	78
Laikipia East.....	102,815	1,539.0	67
Laikipia North.....	36,184	2,575.0	14
Laikipia West.....	129,263	3,372.2	38
Nyahururu.....	154,704	813.4	190
<b>Nakuru.....</b>	<b>2,162,202</b>	<b>7,462.4</b>	<b>290</b>
Gilgil.....	185,209	1,075.4	172
Kuresoi North.....	175,074	618.1	283
Kuresoi South.....	155,324	548.2	283
Molo.....	156,732	483.2	324
Naivasha.....	355,383	1,958.4	181
Nakuru East.....	193,926	230.9	840
Nakuru North.....	218,050	387.3	563
Nakuru West.....	198,661	71.9	2,764
Njoro.....	238,773	699.5	341
Rongai.....	199,906	988.1	202
Subukia.....	85,164	401.5	212
<b>Narok.....</b>	<b>1,157,873</b>	<b>17,950.3</b>	<b>65</b>
Narok East.....	115,323	2,042.0	56
Narok North.....	251,862	2,159.4	117
Narok South.....	238,472	4,577.3	52
Narok West.....	195,287	5,563.0	35
Trans Mara East.....	111,183	309.8	359
Trans Mara West.....	245,714	2,545.9	97
Mau Forest*.....	32	752.9	0

\*Demarcated as a special area to ensure complete coverage during census enumeration

**Table 2.7: Distribution of Population by Land Area and Population Density by Sub-County, Cont'd**

National/ County	Population	Land Area (Sq. Km)	Population Density (No. per Sq. Km)
<b>Kajiado.....</b>	<b>1,117,840</b>	<b>21,871.1</b>	<b>51</b>
Isinya.....	210,473	1,071.6	196
Kajiado Central.....	161,862	4,239.5	38
Kajiado North.....	306,596	110.6	2,773
Kajiado West.....	182,849	7,862.1	23
Loitokitok.....	191,846	6,336.7	30
Mashuuru.....	64,214	2,250.7	29
<b>Kericho.....</b>	<b>901,777</b>	<b>2,436.1</b>	<b>370</b>
Belgut.....	145,072	264.3	549
Bureti.....	199,470	320.6	622
Kericho East.....	170,625	240.6	709
Kipkelion.....	122,530	349.9	350
Londiani.....	137,580	399.5	344
Soin Sigowet.....	126,500	466.2	271
Mau Forest.....	0	201.2	0
Tinderet Forest*.....	0	193.7	0
<b>Bomet.....</b>	<b>875,689</b>	<b>2,530.9</b>	<b>346</b>
Bomet East.....	144,275	305.0	473
Chepalungu.....	164,837	460.5	358
Konoin.....	163,507	392.5	417
Sotik.....	227,855	544.3	419
Bomet Central.....	175,215	286.1	613
Mau Forest*.....	0	542.3	0
<b>Kakamega.....</b>	<b>1,867,579</b>	<b>3,020.0</b>	<b>618</b>
Butere.....	154,100	210.1	734
Kakamega Central.....	188,212	155.2	1,212
Kakamega East.....	167,641	417.2	402
Kakamega North.....	238,330	420.8	566
Kakamega South.....	111,743	146.2	764
Khwisero.....	113,476	145.6	780
Likuyani.....	152,055	316.1	481
Lugari.....	122,728	254.3	483
Matete.....	66,172	102.7	644
Matungu.....	166,940	279.1	598
Mumias East.....	116,851	150.2	778
Mumias West.....	115,354	163.3	<b>706</b>
Navakholo.....	153,977	259.3	594
<b>Vihiga.....</b>	<b>590,013</b>	<b>563.8</b>	<b>1,047</b>
Emuhaya.....	97,141	89.0	1,091
Vihiga.....	95,292	90.1	1,058
Sabatia.....	131,628	111.4	1,181
Luanda.....	106,694	84.3	1,265
Hamisi.....	159,241	157.2	1,013
Kakamega Forest*.....	17	31.7	1

\*Demarcated as a special area to ensure complete coverage during census enumeration

**Table 2.7: Distribution of Population by Land Area and Population Density by Sub-County, Cont'd**

National/ County	Population	Land Area (Sq. Km)	Population Density (No. per Sq. Km)
<b>Bungoma</b> .....	<b>1,670,570</b>	<b>3,023.9</b>	<b>552</b>
Bumula.....	215,892	345.2	625
Bungoma Central.....	177,748	232.7	764
Bungoma East.....	114,548	163.3	702
Bungoma North.....	121,317	191.5	633
Bungoma South.....	287,765	321.2	896
Cheptais.....	136,035	222.9	610
Kimilili-Bungoma.....	162,038	179.6	902
Mt. Elgon.....	78,873	126.5	624
Bungoma West.....	119,875	211.0	568
Tongaren.....	100,343	185.3	542
Webuye West.....	152,515	238.9	638
Mt. Elgon Forest*.....	3,621	605.8	6
<b>Busia</b> .....	<b>893,681</b>	<b>1,696.3</b>	<b>527</b>
Bunyala.....	85,977	192.2	447
Busia.....	142,408	196.0	727
Butula.....	140,334	243.6	576
Nambale.....	111,636	238.1	469
Samia.....	107,176	262.4	408
Teso North.....	138,034	261.0	529
Teso South.....	168,116	302.9	555
<b>Siaya</b> .....	<b>993,183</b>	<b>2,529.8</b>	<b>393</b>
Siaya.....	224,343	598.9	375
Gem.....	179,792	405.3	444
Ugenya.....	134,354	323.5	415
Ugunja.....	104,241	201.0	519
Bondo.....	197,883	598.8	330
Rarieda.....	152,570	402.4	379
<b>Kisumu</b> .....	<b>1,155,574</b>	<b>2,085.4</b>	<b>554</b>
Kisumu East.....	220,997	141.6	1,560
Kisumu Central.....	174,145	36.8	4,737
Kisumu West.....	172,821	209.0	827
Seme.....	121,667	267.7	455
Muhoroni.....	154,116	657.5	234
Nyando.....	161,508	446.1	362
Nyakach.....	150,320	326.7	460
<b>Homa Bay</b> .....	<b>1,131,950</b>	<b>3,152.5</b>	<b>359</b>
Homa Bay.....	117,439	182.0	645
Ndhiwa.....	218,136	713.5	306
Rachuonyo North.....	178,686	435.4	410
Rachuonyo East.....	121,822	250.9	486
Rachuonyo South.....	130,814	256.1	511
Rangwe.....	117,732	274.1	429
Suba North.....	124,938	406.3	307
Suba South.....	122,383	634.1	193

\*Demarcated as a special area to ensure complete coverage during census enumeration

*Table 2.7: Distribution of Population by Land Area and Population Density by Sub-County, Cont'd*

National/ County	Population	Land Area (Sq. Km)	Population Density (No. per Sq. Km)
<b>Migori.....</b>	<b>1,116,436</b>	<b>2,613.5</b>	<b>427</b>
Awendo.....	117,290	255.3	459
Kuria East.....	96,872	187.6	516
Kuria West.....	208,513	395.7	527
Nyatike.....	176,162	676.9	260
Rongo.....	124,587	213.4	584
Suna East.....	122,674	205.1	598
Suna West.....	128,890	287.5	448
Uriri.....	141,448	392.1	361
<b>Kisii.....</b>	<b>1,266,860</b>	<b>1,323.0</b>	<b>958</b>
Etago.....	83,787	108.4	773
Gucha.....	83,740	82.1	1,020
Gucha South.....	83,623	94.9	881
Kenyenya.....	131,740	141.7	930
Kisii Central.....	166,906	135.8	1,229
Kisii South.....	135,134	128.3	1,054
Kitutu Central.....	154,175	100.3	1,537
Marani.....	107,464	128.4	837
Masaba South.....	122,396	161.2	759
Nyamache.....	130,898	162.7	805
Sameta.....	66,997	79.1	847
<b>Nyamira.....</b>	<b>605,576</b>	<b>897.3</b>	<b>675</b>
Borabu.....	73,167	246.9	296
Manga.....	94,209	111.5	845
Masaba North.....	111,860	141.7	789
Nyamira North.....	167,267	215.7	775
Nyamira South.....	159,073	181.5	876
<b>Nairobi City.....</b>	<b>4,397,073</b>	<b>703.9</b>	<b>6,247</b>
Dagoretti.....	434,208	29.1	14,908
Embakasi.....	988,808	86.3	11,460
Kamukunji.....	268,276	10.5	25,455
Kasarani.....	780,656	86.2	9,058
Kibra.....	185,777	12.1	15,311
Lang'ata.....	197,489	216.8	911
Makadara.....	189,536	11.7	16,150
Mathare.....	206,564	3.0	68,941
Njiru.....	626,482	129.9	4,821
Starehe.....	210,423	20.6	10,205
Westlands.....	308,854	97.5	3,167





Kenya National Bureau of Statistics  
Real Towers, Upper Hill  
P.O. Box 30266,00100  
Nairobi

Tel: +254-20-3317583/6/8

Email: [directorgeneral@knbs.or.ke](mailto:directorgeneral@knbs.or.ke)  
[info@knbs.or.ke](mailto:info@knbs.or.ke)

Website: <https://knbs.or.ke>

Follow us at:

FB: Kenya National Bureau of Statistics (KNBStats)

Twitter: @KNBStats

ISBN 978-9966-102-09-6



9 789966 102096