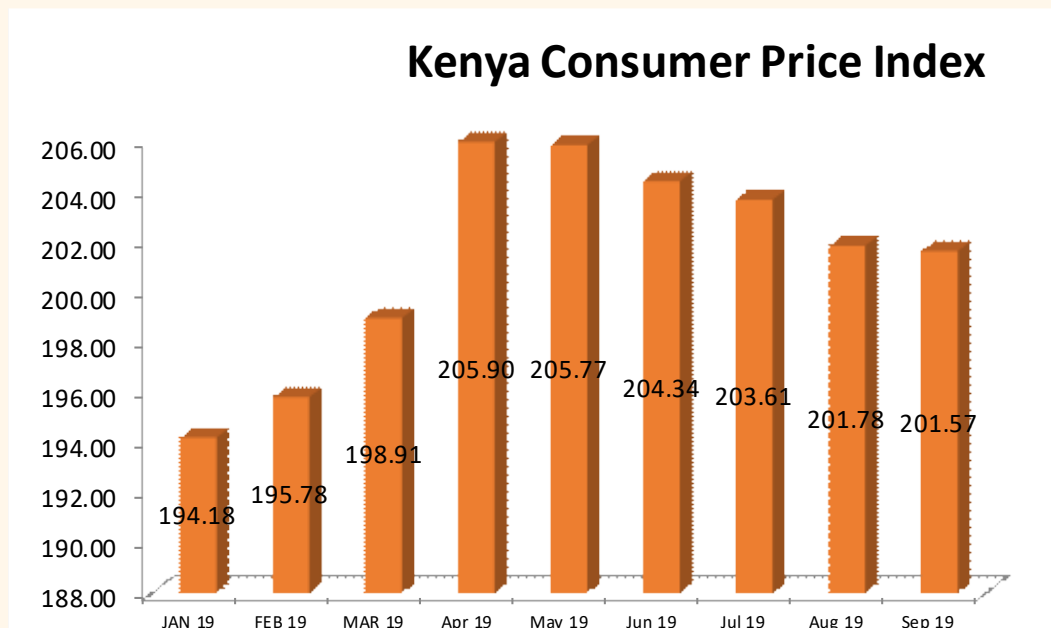


Leading Economic Indicators



SEPTEMBER 2019

Contents

Table 1(a): Kenya Consumer Price Indices	7
Table 1(b): Kenya Inflation rate	8
Table 2: Mean Foreign Exchange rates of Kenyan Shilling against Selected Major Currencies at the end of the Month	10
Table 3: Interest rate (%)	11
Table 4: Nairobi Securities Exchange	12
Table 5(a): Money Supply	14
Table 5(b): Gross Foreign Exchange Reserves	15
Table 6: Coffee Sales and Prices*	16
Table 7: Tea Production and Auction Prices	17
Table 8: Cane Deliveries	18
Table 9(a): Monthly Retail Prices for Dry Maize, 2018 (per Kg)	19
Table 9(b): Average Monthly Retail Prices for Dry Maize, 2019 (per Kg)	20
Table 9(C): Average Monthly Retail Prices for Dry Beans, 2018 (per Kg)	21
Table 9(d): Average Monthly Retail Prices for Dry Beans, 2019 (per Kg)	22
Table 10: Exports of Coffee and Tea	23
Table 11: Monthly Exports of Fresh Horticultural Produce	24
Table 12: External Trade	25
Table 13(a): Major Destinations of Domestic Exports	26
Table 13(b): Domestic Exports by Broad Economic Category	27
Table 14 (a) Major Origins of Imports	28
Table 14(b): Imports by Broad Economic Category	29
Table 14 (c): Mobile Money Transactions	30
Table 14(d): International trade in ICT	31
Table 15(a): Local Electricity Generation by Source	32
Table 15(b): Generation and Consumption of Electricity	34
Table 15(c): Consumption of Petroleum Fuels	35
Table 15(d): Average Retail Prices for Selected Fuel Products within Nairobi	36
Table 15(e): Average Retail Prices for Selected Fuels in Kenya	37
Table 15(f): Murban ADNOC Crude Oil Prices	39
Table 16: Value of Building Plans Approved	40
Table 17(a): Domestic Production of Sugar	41
Table 17(b): Production of Soft Drinks	41
Table 17(c): Production of Assembled Vehicles	43
Table 17(d): Production of Galvanized Sheets	44
Table 17(e): Cement Production and Consumption	45
Table 17(f): Milk Intakes in the Formal Sector	46
Table 18: Visitor Arrivals through J.K.I.A and M.I.A	47
Table 19(a): Jomo Kenyatta international airport-Embarked Passengers by Port of Destination	49
Table 19(b): Jomo Kenyatta international airport- Landed Passengers by Port of Origin	50
Table 19(c): New Vehicle Registration	51
Table 19(d): Passenger and Cargo Movement on the Standard Gauge Railway	52

LIST OF FIGURES

	Page Number
Fig. 1: Inflation rates	9
Fig. 2: End of Month Mean Exchange rate of Kenya Shillings against Major Selected Currencies	10
Fig. 3: Nairobi Securities Exchange 20 Share Index	13
Fig. 4: Coffee Sales at the Nairobi Coffee Exchange	16
Fig. 5: Tea Production	17
Fig. 6: Cane Deliveries	18
Fig. 7: Electricity Generation by Source	33
Fig. 8: Average Prices for Liquefied Petroleum Gas in Kenya ('000 KSh per 13 Kg cylinder)	38
Fig. 9: Milk Intake in the Formal Sector	46
Fig. 10: Visitor Arrivals through J.K.I.A and M.I.A	48

KEY HIGHLIGHTS

OVERVIEW

The Monthly Leading Economic Indicators report highlights changes in Consumer Price Indices (CPI) and inflation, interest and exchange rates. In addition, the report presents changes in indicators of international trade, agriculture, energy, manufacturing, building and construction, tourism and transport.

MACROECONOMIC INDICATORS

Consumer Price Index (CPI) decreased from 201.78 points in August 2019 to 201.57 points in September 2019. The overall rate of inflation dropped from 5.00 per cent to 3.83 per cent during the same period. In September 2019, the Kenyan Shilling depreciated against the major trading currencies except for the Japanese Yen. The average yield rate for the 91-day Treasury bills, which is a benchmark for the general trend of interest rates dropped from 6.44 per cent in August 2019 to 6.35 per cent in September, while the inter-bank rate rose from 3.70 per cent to 6.59 per cent over the same period.

The Nairobi Securities Exchange (NSE) 20 share index decreased from 2,468 points in August 2019 to 2,432 points in September 2019 while the total number of shares traded increased from 322 million shares to 368 million shares during the same period. The total value of NSE shares traded increased from KSh 8.7 billion in August 2019 to KSh 10.6 billion in September 2019.

Broad money supply (M3), a key indicator for monetary policy formulation, decreased from KSh 3,472.77 million in August 2019 to KSh 3,435.07 million in September 2019. On the other hand, the value of Gross Foreign Exchange Reserves decreased from KSh 1,362.35 billion in August 2019 to KSh 1,358.59 billion in September 2019 while the value of Net Foreign Exchange Reserves dropped from KSh 870.48 billion in August 2019 to 837.45 billion in September 2019.



The quantity of coffee auctioned at the Nairobi Coffee Exchange was 1,521.79 MT in September 2019 while the average auction price stood at KSh 232.60 per kilogram over the same period. The quantity of produced tea increased from 31,458.49 MT in July 2019 to 37,200.22 MT in August 2019. The price of processed tea also rose from KSh 205.43 in July 2019 per kilogram to KSh 217.92 in August 2019. The quantity of

cane deliveries increased from 256.47 thousand tonnes in July 2019 to 342.96 thousand tonnes in August 2019.

The quantity of cut-flower exports in August 2019 was 14,157.26 MT while its value of exports was KSh 7,818.28 million during the same period. The volume of vegetable exports decreased from 5,218.74 MT in July 2019 to 5,061.47 MT in August 2019. The value of vegetable exports decreased from KSh 1,736.80 million to KSh 1,679.77 million during the same period.

INTERNATIONAL TRADE

Volume of trade dropped from KSh 203.81 billion in July 2019 to KSh 182.41 billion in August 2019. The value of total exports decreased from KSh 50.22 billion in July 2019 to KSh 49.60 billion in August 2019 while the value of imports decreased from KSh 153.59 billion in July 2019 to KSh 132.80 billion in August 2019. Domestic exports by Broad Economic Category (BEC) indicated that food and beverages was the main export category in August 2019 accounting for 42.87 per cent of exports, while non-food industrial supplies accounted for 23.45 per cent of the total exports.

Quantity of coffee exported decreased from 5,115.45 MT in July 2019 to 3,931.89 MT in August 2019 while its value dropped from KSh 1,713.18 million to KSh 1,461.51 million over the same period. The quantity of tea exported increased from 33,657.14 MT in July 2019 to 41,275.96 MT in August 2019. The value of exported tea increased from KSh 7,788.40 million to KSh 9,458.09 million over the same period.

Imports by BEC indicate that non-food industrial supplies was the main import category in August 2019 with a share of 36.91 per cent. Machinery & other capital equipment; fuel and lubricants; and transport equipment constituted 13.80, 15.67 and 10.36 per cent of the total value of imports, respectively. The share of foods and beverages Imports accounted for 13.64 per cent of the total imports.

ENERGY



Total local electricity generation decreased from 967.61 million KWh in August 2019 to 953.34 million KWh in September 2019. In the international market, the price of Murban crude oil increased from an average of US Dollars 60.16 per barrel in August 2019 to US Dollars 62.39 in September 2019.

The national average domestic retail oil prices of motor gasoline premium dropped from KSh 111.70 per litre in August 2019 to KSh 108.83 in September 2019. The price of light diesel oil dropped from KSh 104.94 in August 2019 to retail at KSh 102.82 in September 2019. On the other hand, the average price for Kerosene rose from 100.60 to retail at KSh 101.94 in September 2019. Charcoal prices averaged KSh 147.17 per 4KG tin in September 2019. The price of a 13-Kg cylinder of gas averaged KSh 2,124.79 in September 2019.

MANUFACTURING, BUILDING AND CONSTRUCTION



The quantity of cement produced decreased from 499,945 MT in July 2019 to 495,099 MT in August 2019. Consumption of cement dropped from 500,601 MT in July 2019 to 492,695 MT in August 2019. Sugar production increased from 25,097 Metric tonnes in July 2019 to 32,705 Metric tonnes in August 2019. Production of assembled vehicles increased from 558 units in

June 2019 to 689 units in July 2019. Milk uptake in the formal sector dropped from 63.54 million litres in July 2019 to 60.46 million litres in August 2019.

ICT, TOURISM AND TRANSPORT



The total number of mobile money transactions was 151.83 million in August 2019 while their value stood at KSh 368.50 billion over the same period. The value of imports for telecommunication equipment rose from KSh 927.17 million in June 2019 to KSh 1,128.13 million in July 2019.

The total number of visitors arriving through Jomo Kenyatta (JKIA) and Moi International Airports (MIA) decreased from 159,804 persons in August 2019 to 130,867 persons in September 2019. The number of passengers who landed at Jomo Kenyatta International Airport (JKIA) increased from 306,911 persons in July 2019 to 321,176 persons in August 2019, and passengers who embarked also increased from 172,599 persons in July 2019 to 208,197 persons in August 2019. The total number of vehicles registered in September 2019 stood at 26,281 out of which 6,322 were Station Wagons.

Table 1(a): Kenya Consumer Price Indices
Kenya CPI: Base period February 2009=100

Group	Nairobi				Rest of Urban Areas	Kenya CPI
	Lower Income	Middle Income	Upper Income	Nairobi Combined		
2018						
January.....	191.45	159.79	156.07	182.48	187.57	185.47
February.....	194.37	160.71	157.31	184.85	190.20	188.00
March.....	198.16	161.43	157.56	187.76	192.62	190.62
April.....	200.32	161.79	157.57	189.41	195.82	193.18
May.....	202.10	163.00	157.92	191.00	197.89	195.05
June.....	200.15	162.99	159.61	189.66	195.88	193.31
July.....	197.39	162.48	159.58	187.54	194.43	191.59
August.....	195.70	164.10	163.82	186.87	195.90	192.18
September....	196.50	165.96	166.18	187.99	198.44	194.14
October.....	193.99	165.44	163.93	185.96	197.24	192.59
November.....	194.06	165.92	164.01	186.14	196.53	192.25
December.....	195.33	167.16	166.77	187.46	197.75	193.51
2019						
January.....	197.09	168.04	166.21	188.91	197.87	194.18
February.....	199.65	168.68	165.89	190.90	199.19	195.78
March.....	204.40	170.25	167.16	194.75	201.83	198.91
April.....	213.25	173.05	168.84	201.87	208.73	205.90
May.....	211.34	172.81	168.62	200.43	209.51	205.77
June.....	209.87	172.82	168.82	199.38	207.82	204.34
July.....	209.49	172.86	172.86	199.27	206.65	203.61
August.....	206.77	171.90	172.59	197.07	205.09	201.78
September....	206.40	171.96	172.66	196.81	204.90	201.57

Notes

1. Nairobi Lower Income group - Households spending less than KSh 23,670 in October 2005
 2. Nairobi Middle Income Group- Households spending between KSh 23,671 to KSh 119,999 in October 2005
 3. Nairobi Upper Income Group - Households spending above KSh 120,000 in October 2005
- Rest of Urban areas includes Mombasa, Malindi, Machakos, Nyeri, Thika, Nakuru, Kisii, Kisumu, Eldoret, Nyahururu, Garissa*

Table 1(b): Kenya Inflation rate

Period	Inflation Rates					
	Nairobi				Rest of Urban Areas	Kenya CPI
Lower Income	Middle Income	Upper Income	Combined			
2018						
January.....	6.49	6.35	3.91	6.37	3.80	4.83
February....	5.75	5.77	4.18	5.70	3.62	4.46
March.....	5.36	5.37	4.15	5.33	3.40	4.18
April.....	4.36	4.19	4.14	4.32	3.33	3.73
May.....	4.85	4.61	4.23	4.78	3.40	3.95
June.....	5.52	5.64	5.75	5.55	3.43	4.28
July.....	5.30	5.38	5.46	5.32	3.71	4.35
August.....	3.60	5.77	7.76	4.19	3.94	4.04
September..	4.40	6.82	9.42	5.07	6.13	5.70
October.....	3.07	6.02	7.15	3.82	6.69	5.53
November...	3.42	6.18	6.93	4.11	6.59	5.59
December...	3.50	6.17	7.86	4.21	6.73	5.71
2019						
January.....	2.94	5.16	6.50	3.53	5.50	4.70
February....	2.71	4.96	5.46	3.27	4.73	4.14
March.....	3.15	5.46	6.10	3.72	4.78	4.35
April.....	6.45	6.96	7.16	6.58	6.59	6.58
May.....	4.57	6.02	6.77	4.94	5.87	5.49
June.....	4.85	6.03	5.77	5.13	6.10	5.70
July.....	6.13	6.39	8.33	6.26	6.29	6.27
August.....	5.66	4.75	5.35	5.46	4.69	5.00
September..	5.03	3.61	3.90	4.69	3.25	3.83

Fig. 1: Inflation rates

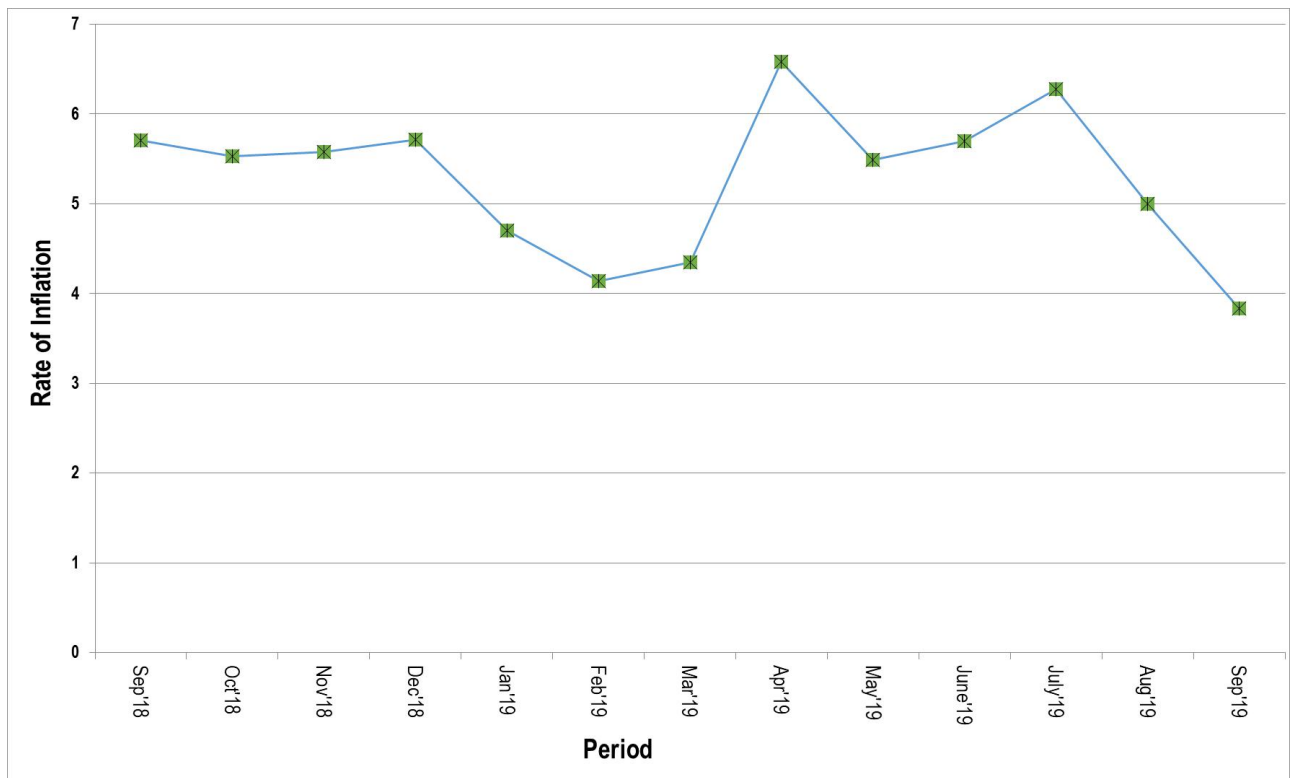


Table 2: Mean Foreign Exchange rates of Kenyan Shilling against Selected Major Currencies at the end of the Month

Year	2018							2019								
Currency	June	July	Aug	Sep	Oct	Nov	Dec	Jan	Feb	Mar	Apr	May	June	July	Aug	Sep
1 US Dollar.....	101.00	100.67	100.61	100.83	101.08	102.36	102.29	101.58	100.23	100.36	101.07	101.14	101.69	103.16	103.30	103.80
1 Pound Sterling.....	134.24	132.58	129.68	131.65	131.60	132.08	129.74	130.76	130.29	132.29	131.77	130.17	128.82	128.92	125.59	128.16
1 Euro.....	117.97	117.60	116.25	117.66	116.20	116.35	116.45	115.95	113.68	113.51	113.58	113.19	114.73	115.83	114.96	114.35
100 Japanese Yen.....	91.90	90.35	90.67	90.17	89.59	90.35	90.99	93.18	90.89	90.26	90.59	91.90	94.10	95.35	97.12	96.68
1 SA Rand.....	7.62	7.50	7.18	6.81	7.00	7.25	7.22	7.29	7.27	6.87	7.13	7.02	6.95	7.35	6.83	6.99
USHS/KES.....	38.05	37.41	37.06	37.70	37.40	36.54	36.38	36.45	36.64	36.92	36.97	37.22	36.72	35.84	35.76	35.41
TSHS/KES.....	22.54	22.61	22.71	22.67	22.66	22.46	22.49	22.72	23.23	23.36	22.88	22.75	22.61	22.30	22.26	22.18

Source: Central Bank of Kenya

Fig. 2: End of Month Mean Exchange rate of Kenya Shillings against Major Selected Currencies

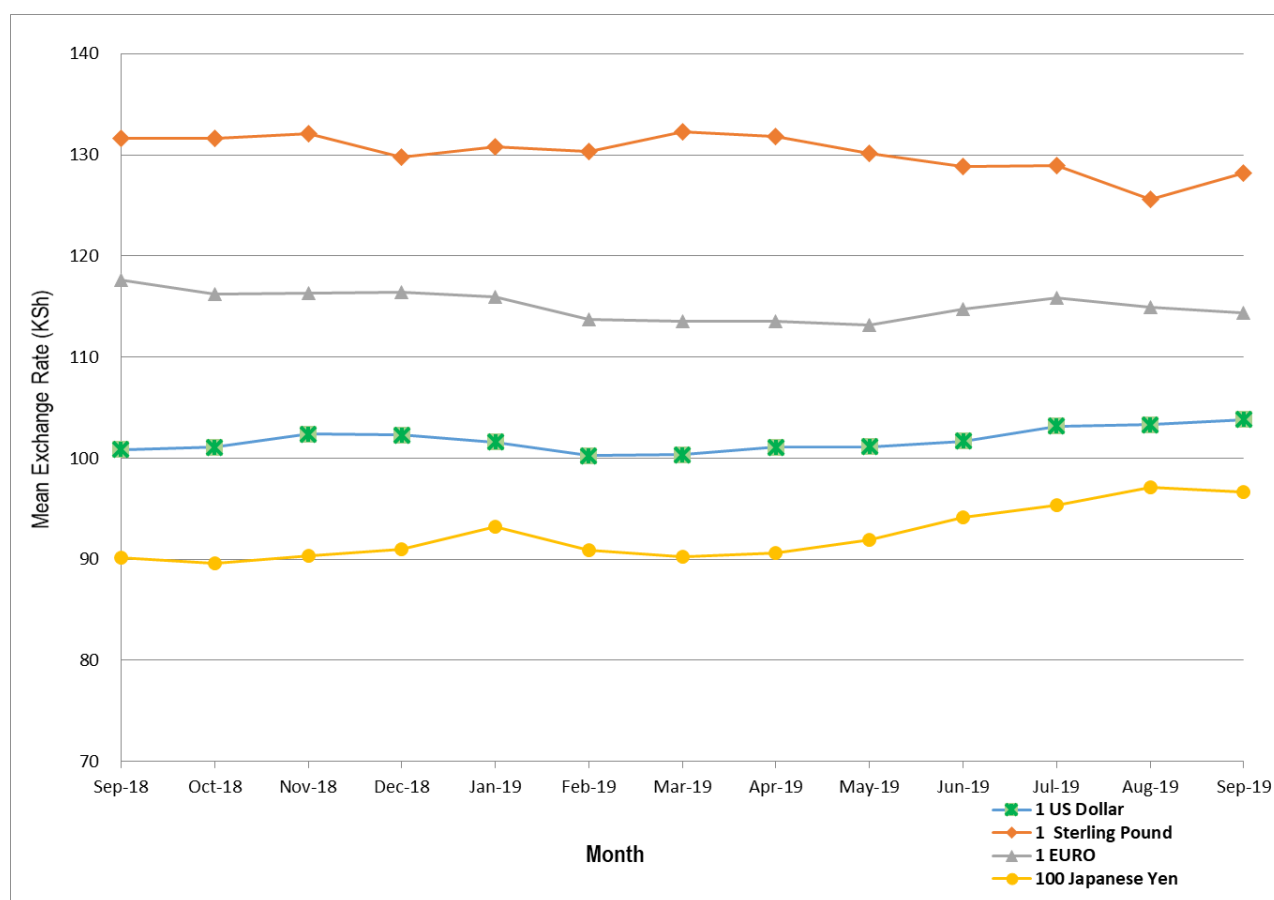


Table 3: Interest rate (%)

Month/Year	Average Yield Rates 91 – Days Treasury Bills	Central Bank Rate	Rates for Commercial Banks Loans and Advances (Weighted Average)	Overdraft Rates	Average Deposit Rate	Inter – Bank Rates	Savings (Commercial Banks Rates)
2018							
January	8.04	10.00	13.65	13.61	8.26	6.21	6.97
February	8.03	10.00	13.68	13.75	8.25	5.12	7.01
March	8.02	9.50	13.49	13.40	8.16	4.90	6.85
April	8.00	9.50	13.24	13.29	8.17	5.38	6.72
May	7.96	9.50	13.25	13.30	8.08	4.70	6.64
June	7.87	9.50	13.22	13.23	8.04	5.03	6.60
July	7.69	9.00	13.10	13.16	8.01	4.82	6.53
August	7.64	9.00	12.78	12.90	7.78	6.52	6.52
September	7.64	9.00	12.66	12.52	7.76	4.28	6.33
October	7.56	9.00	12.61	12.42	7.63	3.48	5.70
November	7.36	9.00	12.55	12.11	7.41	4.09	5.38
December	7.34	9.00	12.51	12.17	7.41	8.15	5.13
2019							
January	7.19	9.00	12.50	12.15	7.34	3.32	5.14
February	7.02	9.00	12.47	12.13	7.28	2.51	5.16
March	7.08	9.00	12.51	12.13	7.22	3.72	5.05
April	7.39	9.00	12.50	12.15	7.17	3.04	4.75
May	7.17	9.00	12.47	12.13	7.20	5.61	4.71
June	6.91	9.00	12.47	12.12	7.19	3.00	4.77
July	6.62	9.00	12.39	11.89	6.97	2.28	4.50
August	6.44	9.00				3.70	
September	6.35	9.00				6.59	

Table 4: Nairobi Securities Exchange

Month	Number of Transactions	Number of Shares (Million)	Value of Shares (Million KSh)	NSE 20 Share Index
2018				
January.....	25,591	862	20,340	3,737
February.....	24,783	572	17,919	3,750
March.....	32,645	704	22,890	3,854
April.....	28,483	449	15,076	3,735
May.....	30,196	677	18,377	3,333
June.....	24,798	453	13,688	3,286
July.....	24,360	323	9,736	3,320
August	25,279	329	10,243	3,203
September.....	25,311	392	11,950	2,876
October.....	26,295	843	16,890	2,820
November.....	22,252	407	10,713	2,797
December.....	17,640	320	7,830	2,801
2019				
January.....	24,798	557	16,200	2,983
February.....	23,444	425	14,173	2,916
March.....	20,808	448	15,917	2,846
April.....	18,923	295	9,865	2,797
May.....	23,308	452	12,494	2,677
June.....	18,211	334	10,538	2,633
July.....	20,683	374	11,453	2,628
August	18,893	322	8,652	2,468
September.....	19,481	368	10,558	2,432

Source: Nairobi Securities Exchange Limited

Base Jan 1966=100

Fig. 3: Nairobi Securities Exchange 20 Share Index

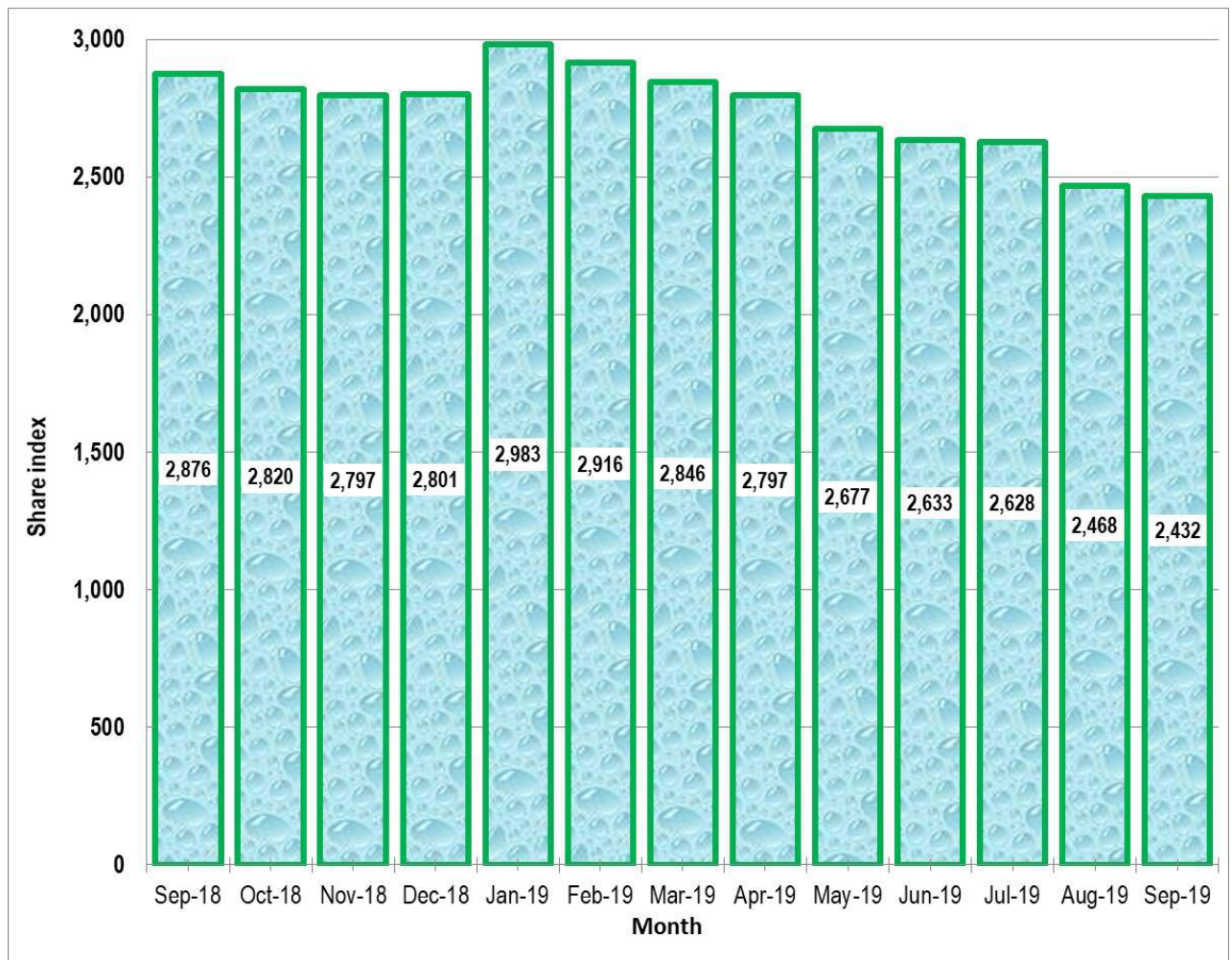


Table 5(a): Money Supply

KSh million

As at end of month	Money (M1)*	Quasi – Money banks & NBFIs	Total (M2)***	Foreign currency deposits ¹	Broad Money (M3)****	% Change
2018						
January	1,363,106	1,180,536	2,543,642	482,460	3,026,102	-0.15
February	1,383,959	1,177,326	2,561,286	462,231	3,023,516	-0.09
March	1,361,593	1,199,345	2,560,938	474,458	3,035,395	0.39
April	1,405,903	1,192,621	2,598,525	476,288	3,074,813	1.30
May	1,400,363	1,220,683	2,621,046	521,025	3,142,070	2.19
June	1,425,556	1,256,322	2,681,878	580,762	3,262,639	3.84
July	1,434,616	1,270,606	2,705,222	573,568	3,278,791	0.50
August	1,393,104	1,305,655	2,698,759	560,966	3,259,725	-0.58
September	1,379,544	1,305,377	2,684,921	576,160	3,261,081	0.04
October	1,436,428	1,283,358	2,719,786	553,218	3,273,004	0.37
November	1,409,609	1,289,822	2,699,431	569,611	3,269,041	-0.12
December	1,477,526	1,278,447	2,755,973	581,859	3,337,832	2.10
2019						
January	1,464,557	1,293,082	2,757,639	586,644	3,344,283	0.19
February	1,461,012	1,287,545	2,748,557	584,920	3,333,476	-0.32
March	1,520,263	1,318,146	2,838,409	576,915	3,415,324	2.46
April	1,501,685	1,323,773	2,825,458	578,930	3,404,388	-0.32
May	1,495,747	1,342,542	2,838,289	577,947	3,416,236	0.35
June	1,575,496	1,368,241	2,943,737	620,498	3,564,230	4.33
July	1,510,782	1,381,836	2,892,618	616,817	3,509,435	-1.54
August	1,476,420	1,388,186	2,864,606	608,163	3,472,769	-1.04
September	1,421,413	1,406,263	2,827,676	607,399	3,435,074	-1.09

Source: Central Bank of Kenya

* Currency in circulation less cash in banks plus all demand deposits except those of National & County government, Banks, non-residents and foreign currency deposits

** All other deposits in commercial banks, except those of National government.

***Broad money (M2) is the sum of M1, Quasi money in Banks and Quasi money in NBFIs less NBFIs Quasi Money Deposits in Banks

**** Broad Money (M3) includes M2 and Foreign currency deposits

M2=(M1+QM-NBFIs)

M3=M2+FCD

¹ Revised All 2014-2018 Numbers revised and available on request

Table 5(b): Gross Foreign Exchange Reserves

KSh Million*							
Month	Central Monetary Authority		Total	Foreign Assets		Gross Total	Net of Foreign Exchange Liabilities [^]
	Central Bank	National Government**		Commercial Banks	NBFI		
2018							
January	763,804	2,117	765,921	221,727	253	987,901	527,201
February	763,623	2,102	765,725	226,187	1,742	993,654	517,758
March	932,536	2,081	934,617	251,769	269	1,186,655	701,293
April	946,662	2,046	948,708	257,550	1,477	1,207,735	725,221
May	939,174	2,036	941,210	267,456	1,608	1,210,275	726,442
June	901,467	2,036	903,504	318,094	229	1,221,826	760,510
July	915,171	1,998	917,169	317,414	747	1,235,331	759,525
August	893,032	1,997	895,029	310,616	339	1,205,984	735,056
September	885,090	1,995	887,085	335,009	430	1,222,524	745,193
October	862,908	1,992	864,900	317,149	172	1,182,221	687,480
November	846,765	2,009	848,774	333,312	168	1,182,254	693,798
December	849,909	1,996	851,917	334,655	372	1,186,944	716,108
2019							
January	859,627	2,001	861,629	317,362	226	1,179,217	708,644
February	855,490	1,981	857,471	316,684	571	1,174,726	713,045
March	857,149	1,982	859,130	333,816	146	1,193,092	721,965
April	848,279	1,989	850,268	361,257	193	1,211,717	746,093
May	1,055,911	1,975	1,057,886	329,037	122	1,387,045	935,354
June	1,048,595	1,995	1,050,590	361,254	207	1,412,052	941,897
July	1,030,383	1,918	1,032,301	357,141	95	1,389,538	902,676
August	990,215	1,918	992,133	370,055	157	1,362,345	870,484
September	977,691	2,002	979,692	378,320	578	1,358,591	837,446

Source: Central Bank of Kenya

* Includes encumbered reserves

**National Government includes reserve position in the Fund and deposits with Crown Agents.

[^] Revised

Table 6: Coffee Sales and Prices*

Month	2018			2019***		
	QUANTITY (MT)	PRICE (\$) /kg	PRICE (Ksh /kg)	QUANTITY (MT)	PRICE (\$) /kg	PRICE (Ksh /kg)
January.....	5,111.90	5.13	527.24	4,166.77	4.46	452.57
February....	5,832.22	5.69	577.36	5,723.84	4.49	449.47
March.....	4,913.15	4.73	478.14	4,057.03	2.97	298.47
April.....	4,194.24	3.03	304.59	5,307.40	2.01	203.37
May.....	4,619.51	2.15	216.55	4,084.00	1.98	200.32
June**.....	-	-	-	2,020.80	1.89	192.17
July.....	1,221.20	3.54	356.73	671.60	1.91	196.94
August.....	2,234.56	3.35	337.30	1,646.63	2.10	216.50
September..	2,299.09	2.86	288.68	1,521.79	2.24	232.60
October.....	2,493.24	3.17	320.55			
November...	2,334.41	3.60	368.16			
December...	1,577.04	3.95	403.58			
Annual.....	36,830.56	3.43	348.24	3,244.43	2.67	271.38

Source: Coffee Directorate

* Auction Price

NB: MT denotes Metric Tonnes

*** Provisional

Fig. 4: Coffee Sales at the Nairobi Coffee Exchange

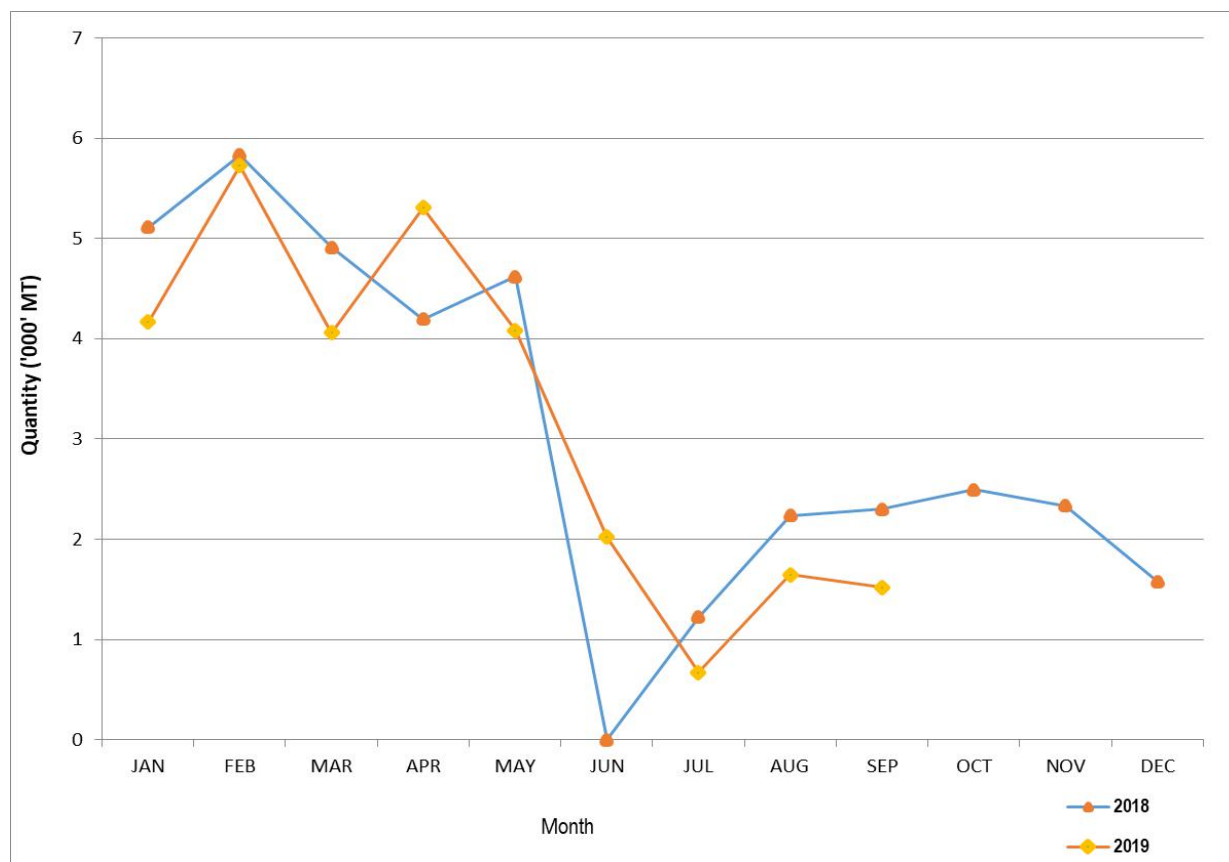


Table 7: Tea Production and Auction Prices

Months	2018			2019*		
	Quantity (MT)	Price (\$/KG)	Price (Ksh/KG)	Quantity (MT)	Price (\$/KG)	Price (Ksh/KG)
January.....	40,834.42	2.96	304.42	48,386.47	2.30	233.94
February.....	27,939.13	2.98	302.28	31,445.08	2.16	216.03
March.....	30,986.83	2.81	283.89	26,461.70	2.13	214.01
April.....	44,579.88	2.67	268.15	26,131.30	2.26	228.05
May.....	43,355.79	2.61	262.95	37,758.64	2.39	241.59
June.....	43,299.06	2.55	257.40	42,425.02	2.16	219.02
July.....	35,278.16	2.49	250.84	31,458.49	1.99	205.43
August.....	37,432.60	2.40	241.20	37,200.22	2.11	217.92
September.....	42,530.86	2.41	243.34			
October.....	49,283.64	2.42	244.21			
November.....	45,648.57	2.36	241.52			
December.....	51,829.79	2.30	235.55			
Annual	492,998.72	2.58	261.31	281,266.92	2.19	222.00

Source: Tea Directorate

MT denotes Metric Tonnes

*Provisional

Fig. 5: Tea Production

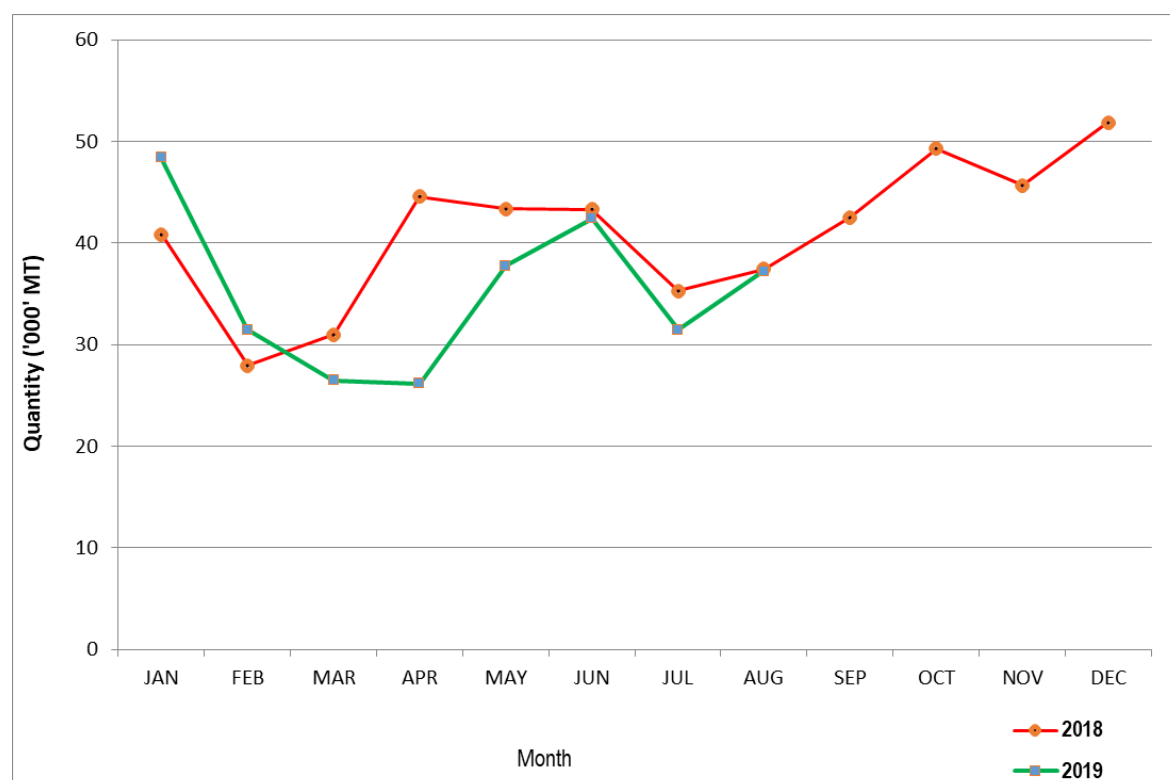


Table 8: Cane Deliveries

	000 Metric Tonnes					
Month	2014	2015	2016	2017	2018	2019*
January	693.47	647.34	670.46	581.60	687.52	534.26
February	620.51	585.21	640.51	519.40	555.88	455.87
March	645.88	645.07	757.06	470.73	445.17	453.15
April	543.85	521.26	576.69	304.79	330.57	358.62
May	533.67	529.33	514.66	231.97	283.90	328.30
June	523.75	544.01	629.67	248.94	312.09	262.66
July	593.20	558.98	609.30	244.69	377.37	256.47
August	547.65	585.74	564.44	173.26	440.10	342.96
September	533.43	619.35	568.36	290.70	434.91	
October	467.11	550.81	568.83	452.81	497.93	
November	369.34	496.55	540.69	571.21	475.53	
December	405.79	565.57	520.17	521.65	418.89	
Total	6,477.65	6,849.22	7,160.84	4,611.75	5,259.85	2,992.29

Source : Sugar Directorate

* Provisional

Fig. 6: Cane Deliveries

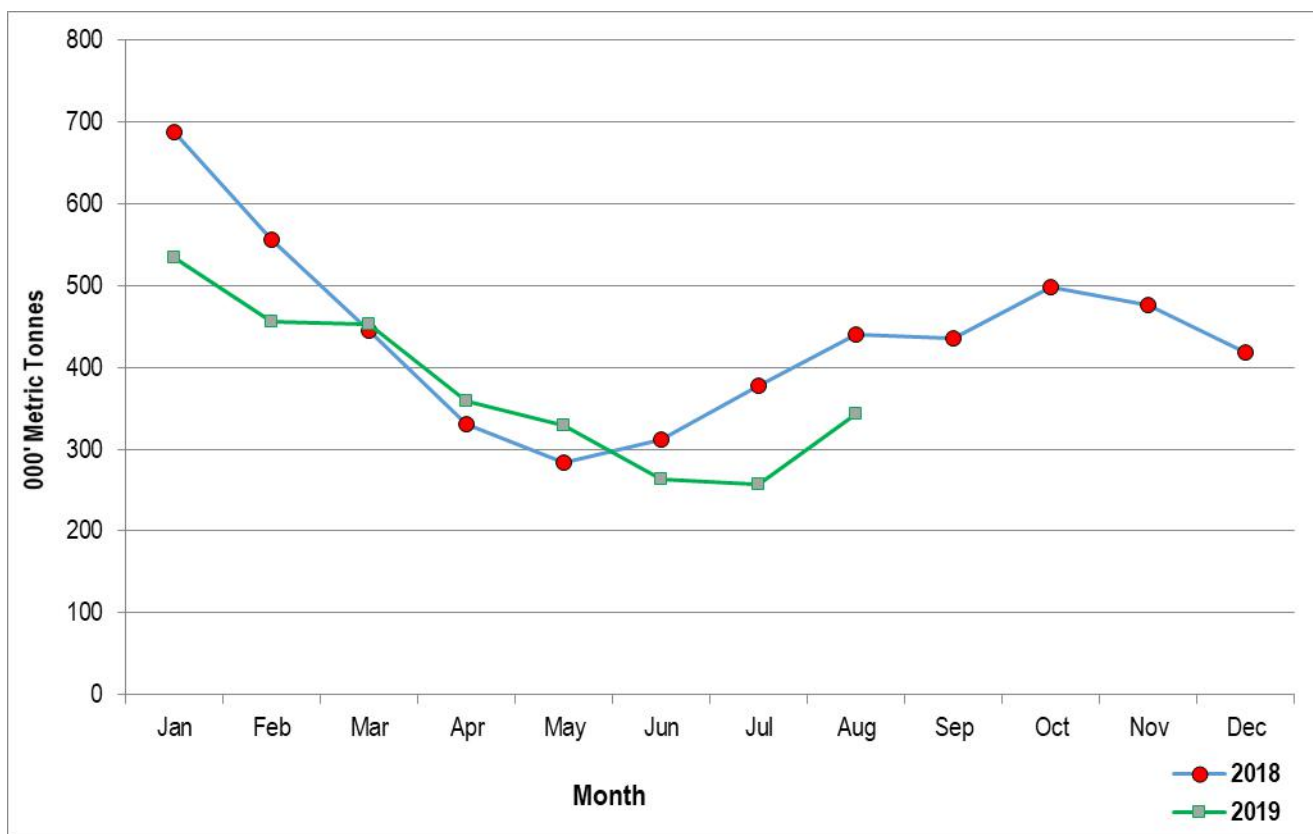


Table 9(a): Average Monthly Retail Prices for Dry Maize, 2018 (per Kg)

Month/Town	Jan	Feb	Mar	Apr	May	June	July	Aug	Sep	Oct	Nov	Dec
Akala.....	36.57	-	-	-	-	-	-	34.31	34.53	33.61	39.22	38.84
Bomet.....	34.50	32.00	32.00	31.00	27.60	31.00	32.00	28.00	28.50	25.60	26.00	-
Bondo.....	32.22	29.54	27.81	27.18	29.68	29.62	27.92	-	-	-	-	-
Bumala.....	-	-	-	-	40.48	31.24	-	-	-	-	-	-
Bungoma Town.....	-	-	-	-	-	-	28.01	22.07	-	-	-	-
Bura Tana.....	39.00	36.25	40.00	50.00	48.33	50.00	46.67	50.00	-	-	-	-
Burra.....	54.55	54.55	60.00	60.00	54.55	54.55	54.55	-	-	-	-	-
Burn Forest.....	28.00	28.00	28.00	35.00	47.22	35.00	35.00	30.63	-	25.00	25.00	21.25
Busia Town.....	-	-	-	-	31.82	30.77	-	-	-	-	-	-
Butere.....	29.17	29.17	30.00	29.50	23.60	24.00	22.71	-	-	-	-	-
Chepsanoi.....	32.40	29.04	30.79	31.69	31.03	31.20	25.68	23.35	23.08	-	21.80	22.53
Cheptula.....	33.73	33.33	33.33	33.33	30.95	29.76	26.98	23.81	-	23.81	23.81	24.60
Daraja Mbili.....	-	29.09	31.17	-	-	-	-	28.83	-	23.81	25.30	24.93
Eldoret.....	-	30.50	32.00	38.93	41.89	40.00	40.00	35.63	-	25.00	25.00	25.00
Embu Town.....	40.00	40.91	40.91	36.36	31.82	32.99	30.50	-	24.71	23.34	22.73	26.14
Endebess.....	25.00	25.00	25.00	25.00	-	-	-	-	-	-	-	-
Engare.....	-	-	-	-	-	32.00	38.00	-	16.00	17.60	19.00	17.00
Gakoromere.....	38.89	37.41	38.20	36.42	32.59	33.33	33.33	27.78	-	27.78	31.94	33.33
Garissa Town.....	-	-	-	-	-	50.00	55.71	60.00	60.00	50.00	50.00	50.00
Gatundu.....	-	-	-	50.00	50.00	50.00	44.58	43.13	-	-	-	-
Gikomba.....	52.38	55.00	60.00	60.00	57.14	57.14	57.14	-	-	-	-	-
Githurai.....	-	-	-	55.00	54.00	55.00	53.33	51.25	-	-	-	-
Harambee.....	-	-	-	-	-	-	-	-	-	19.05	-	-
Hola.....	38.75	36.25	36.67	50.00	50.00	50.00	50.00	50.00	-	-	-	-
Homabay.....	-	-	-	-	-	-	27.57	21.74	-	-	-	-
Iciara.....	-	-	-	-	-	-	-	-	18.47	17.17	21.40	26.19
Isiolo Town.....	-	-	-	50.00	50.00	-	-	46.75	48.50	39.00	33.33	32.50
Iten.....	-	35.00	33.33	31.88	28.73	38.06	27.24	33.33	-	20.28	18.73	15.63
Kabarnet.....	33.33	38.89	-	44.44	44.44	41.67	38.89	38.89	-	-	-	-
Kajiado.....	-	50.00	45.00	50.00	50.00	46.00	43.64	50.00	50.00	-	40.00	46.00
Kakamega.....	35.00	35.00	35.00	37.50	36.00	33.73	27.50	-	-	-	-	-
Kalundu.....	42.50	35.00	35.00	35.00	30.00	30.00	30.00	30.00	32.50	-	26.67	26.67
Kandara.....	-	-	-	-	-	-	-	-	-	40.00	-	-
Kangemi.....	52.50	60.00	60.00	57.14	52.38	52.38	52.38	-	-	-	-	-
Kapsabet.....	31.53	30.79	30.49	31.08	30.64	30.41	24.44	23.39	21.43	-	20.65	22.27
Karatina.....	44.72	39.83	38.10	38.14	42.47	41.98	40.95	42.37	-	30.81	-	15.45
Kawangware.....	50.00	52.50	52.50	55.00	55.00	55.00	55.00	-	-	-	-	-
Kegonga.....	23.46	24.64	25.00	28.26	27.54	26.09	27.42	26.09	-	22.83	-	22.28
Kehacha.....	28.26	26.63	25.00	29.13	27.17	26.09	29.45	24.77	-	23.91	22.83	21.74
Kerugoya.....	45.54	42.63	40.95	40.26	36.26	32.27	31.82	30.95	29.52	25.11	33.18	33.37
Kiambu.....	-	-	-	45.00	45.00	43.75	45.00	43.75	-	-	-	-
Kianjai.....	-	38.34	33.61	36.11	36.67	27.78	27.78	24.44	-	27.78	27.78	-
Kibirigo.....	-	-	-	-	31.82	-	-	29.36	-	-	23.91	-
Kiboswa.....	39.13	-	-	-	-	-	-	-	-	-	-	-
Kilgoris.....	-	-	-	23.00	20.40	21.33	24.00	-	21.00	20.00	17.00	26.00
Kimulot.....	32.00	32.00	32.00	28.00	28.00	-	28.00	28.00	24.00	24.00	25.00	-
Kipkaren.....	-	28.00	28.00	34.22	42.56	35.00	34.58	30.63	-	25.00	25.00	21.25
Kiriaini.....	-	-	-	-	35.00	35.00	33.75	26.25	25.00	25.00	28.75	30.00
Kiriiri.....	-	-	-	-	-	-	-	-	25.72	22.77	25.15	27.77
Kitale.....	29.17	29.17	29.17	29.17	28.94	26.39	27.08	24.40	-	37.60	-	-
Kongowea.....	41.25	42.50	41.25	40.00	40.00	-	-	-	32.50	34.00	31.25	35.00
Korokocho.....	52.38	52.38	57.14	60.00	60.00	60.00	60.00	-	-	-	-	-
Kutus.....	37.27	37.50	36.17	35.83	37.23	31.16	31.82	32.72	31.49	31.13	33.75	33.75
Kwale.....	48.75	50.00	51.40	55.00	54.75	55.00	45.00	40.00	-	40.00	40.00	46.50
Limuru.....	-	-	-	41.67	43.33	45.00	45.00	45.00	-	-	-	-
Lodwar.....	63.75	61.21	61.91	60.00	56.90	-	-	-	-	-	-	-
Machakos Town.....	-	40.00	40.00	40.00	40.00	38.33	40.00	37.50	40.00	35.00	30.00	30.00
Majengo.....	53.33	51.67	46.25	45.00	42.00	-	-	-	41.25	32.00	40.00	40.00
Makuyu.....	-	-	-	40.00	36.25	35.00	34.38	32.50	27.50	-	29.15	25.00
Marsabit Town.....	38.19	39.25	41.20	40.00	40.00	40.00	40.00	40.00	40.00	40.00	40.00	35.00
Mbale.....	38.10	38.10	33.33	33.33	33.33	30.95	26.98	23.81	-	21.43	21.43	23.81
Migori.....	30.43	28.57	26.36	30.43	28.69	28.26	29.13	23.14	-	22.17	21.74	23.37
Mulot.....	30.00	28.00	31.00	32.00	28.00	26.00	26.00	23.00	22.50	23.60	24.00	24.00
Mumias.....	29.17	29.69	31.77	32.29	27.03	28.00	23.44	-	-	-	-	-
Mundata.....	-	-	-	29.76	28.97	28.57	26.98	23.81	-	23.02	24.29	23.81
Muthithi.....	-	-	-	-	35.00	33.75	32.50	30.00	22.50	-	26.25	30.00
Muthurwa.....	40.67	39.07	37.56	52.50	55.00	55.00	55.00	-	-	-	-	-
Muthurwa Narok.....	-	-	-	40.00	33.20	32.00	36.67	-	-	40.80	40.00	16.00
Mwembe Tayari.....	51.25	51.25	46.25	45.00	41.00	-	-	-	40.00	36.00	50.00	50.00
Nakuru Town.....	50.00	55.00	53.75	61.78	64.45	62.97	32.10	27.78	27.78	-	22.22	33.33
Nanyuki.....	-	44.12	52.57	40.70	58.94	44.12	41.77	38.36	-	39.00	34.01	33.26
Ndaragwa.....	-	54.41	-	-	-	-	-	-	-	-	-	-
Ngiya.....	32.21	30.45	-	27.27	28.40	29.17	27.53	34.20	33.99	34.02	38.46	38.85
Ndondori.....	-	-	-	40.00	-	-	-	-	-	-	-	-
Nyabite.....	-	-	-	-	30.43	-	29.38	26.09	-	-	22.92	-
Nyahururu.....	-	60.99	52.72	44.44	64.89	55.65	49.92	27.78	-	-	-	27.72
Nyeri.....	50.00	50.00	47.50	42.37	42.86	40.48	42.86	40.97	-	27.92	22.67	15.93
Oi Kalou.....	-	59.05	60.00	50.00	50.00	50.00	50.00	50.00	-	50.00	35.00	41.67
Oyugis.....	-	-	-	-	-	-	25.00	-	-	-	-	-
Riochanda.....	-	-	-	-	25.00	-	24.78	20.58	-	-	23.91	-
Runyenjes.....	38.96	38.07	36.36	31.82	29.55	27.70	27.19	-	25.00	19.54	21.86	22.73
Sagana.....	40.53	42.57	43.03	38.24	38.22	35.00	-	35.58	32.46	26.02	33.56	34.17
Sega.....	53.00	51.25	45.00	45.00	40.00	-	-	-	42.50	34.00	37.50	36.25
Siakago.....	41.82	43.18	43.18	37.88	37.66	31.82	27.92	-	25.03	22.76	23.27	26.45
Siaya.....	37.70	35.67	33.27	-	-	35.90	30.30	-	33.99	33.83	38.26	38.85
Sibanga.....	27.08	27.08	29.17	29.17	-	-	-	-	-	-	-	-
Soko Mjianga.....	-	-	-	30.43	27.18	-	26.09	21.74	21.74	-	-	-
Sotik.....	36.00	32.00	32.00	33.00	30.40	28.00	29.60	30.00	25.00	24.00	24.00	24.00
Tala.....	-	35.00	-	35.00	30.00	30.00	31.00	30.00	30.00	32.50	31.25	30.00
Thika.....	38.00	45.00	-	48.33	45.00	47.50	46.67	45.00	-	-	-	-
Toi.....	52.50	52.50	60.00	60.00	57.14	57.14	57.14	-	-	-	-	-
Turbo.....	28.00	28.00	28.00	35.00	41.67	35.00	35.00	30.00	-	25.00	25.00	21.25
Turkana.....	83.33	62.70	69.64	60.00	-	51.39	70.31	-	-	-	40.00	50.00
Ukunda.....	50.00	50.00	55.00	50.00	53.60	55.00	48.33	40.00	-	41.00	42.50	43.00
Unguja.....	31.99	29.22	30.36	25.95	-	30.52	28.60	-	34.62	34.10	37.72	39.25
Voi.....	-	-	-	-	-	-	30.00	-	-	-	-	-
Wajir Town.....	-	-	-	-	-	-	-	90.00	-	-	-	-
Wote.....	-	-	-	30.00	-	28.00	28.00	28.86	28.00	-	27.00	28.50
Total.....	40.14	40.00	40.04	40.29	39.71	38.49	36.37	34.29	30.83	29.21	29.23	29.86

-Data not Available

Table 9(b): Average Monthly Retail Prices for Dry Maize, 2019 (per Kg)

Month/Market	January	February	March	April	May	June	July	August	September	October
Akala.....	-	-	-	-	-	-	-	-	34.09	31.82
Bomet.....	30.50	32.00	32.00	32.00	32.00	32.00	-	-	-	-
Bondo.....	31.84	-	-	-	-	-	-	-	-	-
Bumala.....	-	-	-	-	-	38.10	40.95	38.10	36.90	33.33
Bura Tana.....	-	50.00	50.00	50.00	-	-	-	-	-	-
Burn Forest.....	20.00	21.00	25.00	25.63	39.38	45.00	40.00	40.00	40.00	40.00
Busia Town.....	-	-	-	-	-	47.62	43.65	38.78	35.24	33.33
Chepsonoi.....	23.02	22.77	23.54	30.09	38.26	36.28	36.75	40.00	-	-
Cheptula.....	25.00	27.38	28.57	36.90	42.86	42.86	45.24	38.10	33.33	-
Daraja Mbili.....	27.92	26.84	25.57	39.07	37.54	40.93	47.31	36.47	38.02	-
Eldoret.....	25.00	26.25	30.00	25.63	45.00	50.00	44.00	40.00	40.00	-
Embu Town.....	27.27	25.00	22.73	22.73	-	-	-	-	-	-
Engare.....	-	-	-	-	-	-	-	18.00	18.00	24.00
Gakromere.....	33.33	33.33	33.33	37.78	44.44	42.59	-	-	50.00	50.00
Garissa Town....	60.00	60.00	50.00	57.50	64.00	65.00	51.13	52.83	51.67	65.00
Gatundu.....	33.75	40.00	22.50	50.00	-	-	-	-	40.83	52.44
Githurai.....	46.67	45.00	40.00	50.00	50.00	50.00	45.24	-	51.67	53.33
Hola.....	-	50.00	50.00	50.00	-	-	-	-	-	-
Iciara.....	22.23	22.74	22.73	22.73	-	-	-	-	-	-
Isiolo Town.....	30.00	30.00	31.25	30.00	-	-	-	-	-	-
Iten.....	25.00	25.00	26.00	33.75	45.00	50.00	50.00	50.00	50.00	50.00
Kabarnet.....	-	30.00	33.33	44.44	57.22	44.44	-	-	-	-
Kajiado.....	44.00	49.17	62.50	50.00	58.33	49.17	48.13	62.50	50.00	-
Kalundu.....	25.00	25.00	25.80	29.25	40.00	40.00	-	-	-	-
Kapsabet.....	22.65	23.89	24.58	31.00	37.02	38.08	38.73	40.42	40.00	-
Karatina.....	26.77	26.68	27.00	30.81	28.67	35.71	-	-	-	-
Kegonga.....	21.74	21.74	-	26.09	30.43	-	-	-	-	-
Kehacha.....	23.19	21.96	22.46	26.09	-	-	-	-	-	-
Kerugoya.....	32.73	31.85	32.58	44.48	50.00	-	-	-	-	-
Kiambu.....	45.00	45.00	43.33	-	54.00	-	-	-	45.00	67.50
Kianjai.....	31.48	25.56	23.61	38.89	38.89	38.89	-	-	42.22	47.22
Kibirigo.....	25.00	26.09	26.09	43.48	40.22	-	-	-	-	-
Kilgoris.....	-	-	-	-	-	-	-	28.00	24.00	24.00
Kimulot.....	24.00	25.00	28.00	32.00	32.00	32.80	36.00	40.00	40.00	40.00
Kipkaren.....	20.00	21.67	25.00	25.00	41.11	45.00	41.00	40.00	40.00	-
Kiriani.....	-	30.00	30.00	30.00	-	-	-	-	-	50.00
Kiritiri.....	27.92	25.84	27.14	26.98	-	-	-	-	-	-
Kitale.....	20.83	26.56	25.00	30.42	-	-	-	-	27.13	20.00
Kutus.....	30.88	32.77	28.18	36.90	-	-	-	-	-	-
Kwale.....	46.00	46.25	40.00	42.50	42.00	-	-	-	50.00	-
Limuru.....	40.00	-	45.00	-	-	-	-	-	45.00	67.50
Lodwar.....	56.67	54.29	-	69.58	66.03	50.00	50.00	-	-	-
Machakos Town	30.00	30.00	30.00	36.67	50.00	50.00	-	-	50.00	45.00
Makuyu.....	25.00	30.00	30.00	30.00	-	42.50	-	-	-	48.15
Marsabit Town...	32.50	32.50	41.25	47.50	46.00	-	-	-	-	-
Mbale.....	23.81	25.00	37.14	35.12	38.89	36.51	42.38	41.67	35.71	-
Migori.....	35.60	21.74	22.17	27.72	-	-	-	-	-	-
Mulot.....	26.00	23.00	20.00	34.00	32.00	32.00	-	-	-	-
Mundeta.....	23.81	23.81	23.81	29.76	40.48	40.00	43.81	41.07	35.71	-
Muthithi.....	30.00	28.75	30.00	30.00	-	-	-	-	-	46.46
Muthurwa Narok	-	-	-	-	-	-	-	35.00	40.00	-
Nakuru Town....	27.78	27.78	34.72	38.89	47.22	48.33	45.00	35.00	35.00	35.00
Nanyuki.....	33.06	33.34	32.97	42.63	54.95	55.79	54.95	54.50	54.80	-
Ngiya.....	42.46	-	-	-	-	-	-	-	31.97	32.76
Nyabite.....	25.00	26.09	26.09	45.45	42.29	-	-	-	-	-
Nyahururu.....	27.78	27.78	31.85	41.67	49.37	55.25	-	44.44	44.78	-
Nyeri.....	26.02	28.57	25.82	29.84	48.85	33.33	-	-	-	-
Ol Kalou.....	35.00	37.50	45.00	46.25	53.33	50.00	50.00	43.75	50.00	50.00
Oyugis.....	-	-	-	43.48	-	-	-	-	-	37.50
Riochanda.....	20.83	21.74	-	39.13	39.13	-	-	-	-	43.18
Runyenjes.....	22.73	23.86	20.45	19.32	-	-	-	-	-	-
Sagana.....	29.55	35.12	-	-	-	-	-	-	-	-
Siakago.....	23.27	23.02	24.00	27.30	-	-	-	-	-	-
Siaya.....	35.12	-	-	-	-	-	-	37.50	32.52	-
Soko Mjinga.....	26.09	27.27	-	43.48	40.63	-	38.46	35.42	33.33	-
Sotik.....	24.00	25.00	27.20	32.00	32.00	32.00	-	-	-	-
Tala.....	30.00	35.00	35.00	35.00	38.00	40.00	-	-	40.00	40.00
Thika.....	44.29	31.25	35.83	50.00	50.00	55.00	57.39	-	45.00	65.00
Turbo.....	20.00	20.63	23.75	26.25	40.00	45.00	40.00	40.00	40.00	-
Ukunda.....	48.75	46.60	47.00	45.00	42.50	-	-	-	49.00	-
Unguja.....	34.29	-	-	-	-	-	-	-	35.41	-
Voi.....	25.00	25.00	-	-	45.00	45.00	-	-	-	-
Wote.....	28.00	28.00	27.50	50.99	41.71	40.00	-	-	45.00	43.80
Total	31.64	30.78	31.99	38.62	43.55	44.11	45.47	41.64	40.84	48.08

- Data not available

Table 9(C): Average Monthly Retail Prices for Dry Beans, 2018 (per Kg)

Month/Town	Jan	Feb	Mar	Apr	May	Jun	Jul	Aug	Sep	Oct	Nov	Dec
Akala	80.98	-	-	-	-	-	-	71.34	74.91	72.21	81.19	81.45
Bomet	71.16	66.66	78.85	70.94	70.77	77.78	73.08	71.15	69.93	64.62	69.23	-
Bondo	100.28	100.22	93.41	95.03	99.28	70.74	90.91	-	-	-	-	-
Bumala	-	-	-	-	69.05	73.02	-	-	-	-	-	-
Bungoma Town	-	-	-	-	-	-	73.00	88.21	-	-	-	-
Bura Tana	100.00	100.00	100.00	100.00	100.00	100.00	100.00	100.00	100.00	100.00	-	-
Burma	104.76	104.76	105.00	105.00	100.00	100.00	100.00	-	-	-	-	-
Burn Forest	90.00	90.00	105.00	113.46	114.40	90.00	88.33	85.00	83.75	80.00	-	-
Busia Town	-	-	-	-	80.95	76.98	-	-	-	-	-	-
Butere	100.00	88.64	102.28	113.64	68.18	73.63	75.00	-	-	-	-	-
Chepsonoi	-	-	-	-	81.55	79.08	78.11	79.19	82.61	-	82.66	89.59
Cheptula	73.97	79.22	81.82	84.09	77.27	77.27	72.73	69.32	72.73	70.91	68.18	68.18
Daraja Mbili	-	57.57	80.94	-	-	-	-	63.70	62.94	-	60.03	63.02
Eldoret	-	95.46	102.50	119.00	112.73	100.00	93.33	90.00	85.00	85.00	88.75	90.00
Erbua Town	67.50	65.63	70.84	65.28	60.51	65.28	58.64	58.35	56.25	61.24	59.09	59.09
Endebess	75.00	80.56	62.50	62.50	-	-	-	-	-	-	-	-
Engare	-	-	-	70.00	51.20	56.00	53.33	59.00	56.00	65.60	70.00	72.00
Gakoromere	88.89	79.17	76.39	75.31	77.78	55.56	55.56	55.56	55.56	55.56	63.89	66.67
Gariisa Town	-	-	-	-	-	113.33	98.10	86.67	86.67	87.67	81.67	81.67
Garsen	80.00	80.00	80.00	80.00	80.00	80.00	80.00	80.00	80.00	80.00	80.00	80.00
Gatundu	-	-	-	96.11	100.00	100.00	99.17	97.22	93.33	100.00	51.67	-
Gikomba	95.24	100.00	110.00	110.00	104.76	104.76	104.76	-	-	-	-	-
Githurai	-	-	-	81.61	84.05	82.77	82.94	87.92	87.50	51.67	-	-
Harambee	-	-	-	-	-	-	-	-	-	81.82	-	-
Hola	100.00	100.00	100.00	100.00	100.00	100.00	100.00	100.00	100.00	100.00	-	-
Homabay	-	-	-	-	-	-	60.15	60.10	-	65.38	-	-
Iciara	-	-	-	-	-	-	-	-	48.11	56.33	59.64	61.37
Isiolo Town	-	-	-	80.00	80.00	-	-	59.34	80.27	80.00	81.67	85.00
Iten	-	95.46	93.86	94.26	94.98	96.16	75.24	-	-	75.00	68.83	53.13
Kabarnet	77.78	88.89	-	-	100.00	88.89	87.50	-	-	-	-	-
Kajado	-	110.00	110.00	120.00	120.00	114.00	115.29	120.00	120.00	-	110.00	97.00
Kakamega	116.37	113.64	113.64	107.96	109.09	90.91	84.09	-	-	-	-	-
Kalundu	82.86	82.50	83.33	70.00	100.00	100.00	70.00	70.00	72.50	-	67.14	70.00
Kandara	-	-	-	-	-	-	-	-	-	60.00	-	-
Kangemi	105.00	104.76	104.76	110.00	105.00	105.00	105.00	-	-	-	-	-
Kapsabet	78.16	82.97	83.41	86.05	92.61	81.96	78.89	80.53	83.33	-	89.02	77.45
Karatina	105.24	106.07	104.71	122.73	100.25	103.29	102.02	-	-	87.47	84.34	80.62
Kawangware	100.00	95.24	95.24	104.55	104.55	104.55	104.55	-	-	-	-	-
Kegongga	77.00	93.92	88.00	84.62	97.33	96.00	100.60	-	-	80.77	-	94.00
Kehacha	74.67	81.50	78.00	93.00	90.00	98.18	97.00	-	-	77.64	78.00	80.00
Kerugoya	64.52	62.64	60.93	-	63.09	63.86	65.22	51.36	52.49	62.62	72.36	72.36
Kiambu	-	-	-	71.79	66.93	69.23	75.29	79.17	-	-	-	-
Kianjai	-	68.75	69.45	75.00	81.11	58.34	55.56	55.56	-	57.41	50.00	-
Kibirigo	-	-	-	-	76.09	-	86.21	-	-	-	77.27	-
Kiboswa	70.83	-	-	-	-	-	-	-	-	-	-	-
Kilgoris	-	-	-	76.00	80.80	82.67	80.00	73.00	95.00	60.80	26.00	97.00
Kimulot	72.00	72.00	72.00	80.00	81.14	80.00	63.20	65.50	64.80	63.20	65.08	-
Kipkaren	-	90.00	100.00	113.33	116.11	90.00	86.67	81.67	-	80.00	80.00	80.00
Kiriaini	-	-	-	-	75.00	73.33	70.00	70.00	72.50	76.92	76.98	72.50
Kiritiri	-	-	-	-	-	-	-	-	57.32	73.93	68.44	70.25
Kitale	83.33	83.33	83.33	83.33	78.97	66.67	66.67	63.89	-	-	-	-
Kongowea	87.50	87.50	87.50	80.00	80.00	80.00	-	63.75	60.00	52.00	60.00	60.00
Korokocho	104.76	104.76	105.00	105.00	105.00	105.00	105.00	-	-	-	-	-
Kutus	68.15	66.31	68.48	-	65.22	65.22	65.22	66.70	67.48	70.84	69.81	71.96
Kwale	95.00	100.00	100.00	100.00	90.00	100.00	85.00	60.00	-	80.00	80.00	82.50
Limuru	-	-	-	86.51	72.76	68.90	76.17	80.00	-	-	-	-
Lodwar	73.01	84.95	79.17	100.00	67.13	72.92	-	-	-	-	-	-
Machakos Town	-	80.00	80.00	80.00	80.00	78.33	80.00	80.00	80.00	80.00	77.50	70.00
Maclean	116.00	120.00	120.00	120.00	120.00	-	-	100.00	95.00	100.00	100.00	100.00
Majengo	102.50	97.50	77.50	80.00	86.00	90.00	-	80.00	80.00	80.00	75.00	70.00
Makuyu	-	-	-	75.00	70.00	75.00	73.75	69.17	70.00	-	75.99	65.00
Marsabit Town	80.00	90.00	94.58	100.00	100.00	100.00	92.73	82.50	80.00	80.00	80.00	70.00
Mbale	90.91	86.36	90.91	-	81.82	84.09	90.91	-	-	77.27	81.82	81.82
Migori	80.00	83.00	80.50	96.00	96.80	94.50	102.00	-	-	82.68	76.00	74.27
Mulot	65.38	63.64	75.00	67.31	69.87	63.67	66.48	58.33	58.65	63.33	64.74	64.10
Mumias	116.36	109.10	78.41	84.09	90.91	90.91	78.41	-	-	-	-	-
Mundela	-	-	-	77.27	69.70	68.18	74.24	-	-	74.25	73.64	75.00
Muthithi	-	-	-	-	70.00	70.00	72.50	72.50	67.50	-	70.59	75.00
Muthurwa	81.33	84.56	80.97	104.76	110.00	110.00	110.00	-	-	-	-	-
Muthurwa Narok	-	-	-	-	92.80	96.00	97.33	98.00	-	104.80	112.00	100.00
Mwembe Tayari	102.50	85.00	77.50	80.00	94.00	80.00	-	80.00	77.50	84.00	90.00	78.33
Nakuru Town	68.89	71.25	70.00	63.75	82.94	76.11	63.58	52.13	55.19	-	51.85	57.04
Nanyuki	-	115.54	110.09	110.21	102.25	113.22	89.80	97.56	-	83.34	88.28	79.68
Ndaragwa	-	100.00	-	-	-	-	-	-	-	-	-	-
Ndondori	-	-	-	75.00	-	-	-	-	-	-	-	-
Ngiya	101.36	93.75	100.10	96.33	72.92	79.38	105.49	68.81	73.75	73.75	80.37	83.51
Nyabite	-	-	-	-	89.39	-	69.26	57.89	-	-	77.27	-
Nyahururu	-	110.91	111.12	110.96	111.29	110.85	111.32	80.56	-	-	-	77.61
Nyeri	99.41	95.98	93.22	89.92	99.61	90.48	89.33	-	-	81.05	78.32	83.43
Ol Kalou	-	100.00	100.00	100.00	100.00	84.44	96.30	100.00	-	100.00	90.00	95.00
Oyugis	-	-	-	-	-	56.63	-	-	-	-	-	-
Riochanda	-	-	-	-	77.54	-	63.53	67.19	-	-	81.82	-
Runyenjes	84.81	66.67	63.89	62.50	65.24	60.03	59.20	56.48	63.04	59.46	62.77	61.10
Sagana	78.97	91.38	85.15	-	77.71	65.53	-	77.22	62.95	71.10	70.66	69.81
Sega	98.00	90.00	82.50	80.00	88.00	-	-	82.50	80.00	76.00	60.00	62.50
Siakago	66.67	67.71	68.75	66.67	68.64	60.24	56.52	59.94	59.06	63.20	54.31	58.06
Siaya	112.59	102.65	96.29	-	90.52	86.49	91.91	75.17	74.59	73.49	80.02	83.51
Sibanga	83.33	81.25	83.33	83.33	-	-	-	-	-	-	-	-
Soko Mjinga	-	-	-	83.45	88.32	-	56.56	66.35	64.43	-	-	-
Sotik	68.00	68.00	68.18	72.80	76.00	74.29	64.00	65.00	65.00	63.20	64.00	64.00
Tala	-	70.00	-	70.00	70.00	71.67	75.00	70.00	70.00	72.50	70.00	70.00
Thika	72.00	77.00	-	78.98	79.55	79.22	80.12	86.67	-	-	-	-
Toi	115.00	109.52	110.00	110.00	110.00	110.00	110.00	-	-	-	-	-
Turbo	100.00	100.00	105.00	112.50	115.50	90.00	90.00	85.00	-	80.00	83.75	82.50
Turkana	75.00	83.33	83.33	100.00	-	102.53	80.73	-	-	83.33	90.91	112.50
Ukunda	100.00	90.00	90.00	100.00	90.00	95.00	90.83	62.50	-	69.00	72.50	78.75
Unguja	98.75	98.13	95.38	100.00	74.44	69.33	74.11	75.28	74.17	72.63	81.68	83.33
Voi	-	-	-	-	-	-	63.33	-	-	-	-	-
Wajir Town	-	-	-	-	-	-	-	120.00	-	-	-	-
Wote	-	-	-	110.00	-	97.50	90.00	80.00	100.00	-	86.67	95.00
Total	88.10	88.74	88.84	90.52	87.50	85.03	82.07	75.72	74.55	74.42	74.95	76.80

- Data Not Available

Table 9(d): Average Monthly Retail Prices for Dry Beans, 2019 (per Kg)

Month/Market	January	February	March	April	May	June	July	August	September	October
Akala.....	-	-	-	-	-	-	-	-	76.07	80.01
Bomet.....	72.12	71.79	71.79	71.79	74.87	79.49	-	-	-	-
Bondo.....	84.90	-	-	-	-	-	-	-	-	-
Bumala.....	-	-	-	-	-	104.76	102.86	83.33	70.07	119.05
Bura Tana.....	-	100.00	100.00	95.00	-	-	-	-	-	-
Burn Forest.....	90.00	90.00	90.00	92.50	106.25	125.00	112.50	100.00	100.00	100.00
Busia Town.....	-	-	-	-	-	95.24	92.64	79.89	119.05	133.33
Chepsonoi.....	83.43	82.58	86.46	90.50	110.78	108.85	116.34	115.67	-	-
Cheptula.....	72.40	71.59	72.73	85.23	92.42	95.45	93.64	90.91	90.91	-
Daraja Mbili.....	58.57	62.35	70.42	96.07	104.80	88.17	91.70	87.32	84.51	-
Eldoret.....	90.00	90.00	92.50	100.00	113.75	125.00	113.00	100.00	100.00	-
Embu Town.....	52.17	59.44	54.35	52.17	-	-	-	-	-	-
Endebess.....	52.59	60.10	58.04	53.57	-	-	-	-	-	-
Engare.....	-	-	-	-	-	-	-	60.00	74.00	80.00
Gakomere.....	66.67	66.67	66.67	80.00	100.00	96.83	-	-	100.00	100.00
Garissa Town.....	81.67	81.67	81.67	81.67	99.00	103.33	97.50	96.00	98.00	103.33
Garsen.....	80.00	80.00	80.00	85.71	100.00	-	-	-	-	-
Gatundu.....	85.00	51.67	41.67	95.00	-	-	-	-	93.33	65.78
Githurai.....	85.71	75.00	51.67	96.00	98.33	101.21	57.28	-	80.00	74.20
Hola.....	-	100.00	100.00	100.00	-	-	-	-	-	-
Iciara.....	60.98	65.96	65.22	67.39	-	-	-	-	-	-
Isiolo Town.....	76.67	56.67	52.50	60.00	-	-	-	-	-	-
Iten.....	100.00	100.00	100.00	106.25	125.00	100.00	108.33	65.00	50.00	50.00
Kabarnet.....	-	88.89	100.00	111.11	94.72	111.11	-	-	-	-
Kajiado.....	108.65	99.69	100.00	93.33	112.22	112.03	103.08	100.00	93.33	-
Kalundu.....	77.50	75.00	72.73	80.00	102.50	95.00	-	-	-	-
Kapsabet.....	81.04	86.62	86.99	90.02	100.92	112.92	109.85	114.13	137.99	-
Karatina.....	82.33	80.27	88.29	87.09	68.31	70.33	-	-	-	-
Kegonga.....	84.00	72.00	-	76.00	96.00	-	-	-	-	-
Kehacha.....	68.46	74.27	78.67	92.00	-	-	-	-	-	-
Kerugoya.....	54.98	55.20	51.36	58.22	63.86	-	-	-	-	-
Kiambu.....	81.67	76.44	70.00	-	89.78	-	-	-	69.88	81.23
Kianjai.....	62.96	54.44	51.39	77.78	80.56	77.78	-	-	85.19	94.44
Kibirigo.....	72.73	90.91	100.00	100.00	108.89	-	-	-	-	-
Kilgoris.....	-	-	-	-	-	-	-	98.00	96.00	96.00
Kimulot.....	64.00	65.50	68.67	70.00	70.00	71.20	72.80	65.00	60.50	60.00
Kipkaren.....	82.50	90.00	90.00	92.50	106.67	117.50	110.00	100.00	100.00	-
Kiriaini.....	-	70.00	71.00	70.00	-	-	-	-	-	73.51
Kiritiri.....	63.86	65.28	64.88	66.70	-	-	-	-	-	-
Kitale.....	78.33	83.33	83.33	81.67	-	-	-	-	66.67	56.52
Kutus.....	67.99	64.57	65.81	73.91	-	-	-	-	-	-
Kwale.....	78.00	78.75	77.50	80.00	80.00	-	-	-	90.00	-
Limuru.....	76.12	-	80.00	-	-	-	-	-	70.21	86.59
Lodwar.....	91.67	83.33	-	93.75	118.06	110.42	100.00	-	-	-
Machakos Town.....	75.00	80.00	80.00	80.00	100.00	100.00	-	-	100.00	100.00
Makuyu.....	70.00	65.00	65.00	70.00	-	71.29	-	-	-	71.83
Marsabit Town.....	65.00	65.00	77.50	85.00	92.00	-	-	-	-	-
Mbale.....	84.09	84.85	83.64	86.36	100.76	95.45	100.00	111.99	96.59	-
Migori.....	71.49	69.35	71.11	84.27	-	-	-	-	-	-
Mulot.....	64.10	64.10	62.82	70.51	74.36	74.36	-	-	-	-
Mundeta.....	68.18	68.90	72.55	90.91	102.27	102.73	91.82	88.64	90.91	-
Muthithi.....	75.00	68.75	66.67	75.00	-	-	-	-	-	71.51
Muthurwa Narok.....	-	-	-	-	-	-	-	80.00	82.00	-
Nakuru Town.....	62.22	62.22	62.22	66.11	67.94	66.60	65.00	65.00	65.00	62.50
Nanyuki.....	77.56	77.14	78.21	95.19	110.10	109.65	112.58	117.80	115.97	-
Ngiya.....	83.39	-	-	-	-	-	-	-	69.97	69.23
Nyabite.....	77.27	72.73	79.55	95.65	111.36	-	-	-	-	-
Nyahururu.....	77.35	77.78	77.35	77.78	110.76	111.11	-	108.70	111.11	-
Nyeri.....	78.74	77.40	86.52	83.88	89.96	74.18	-	-	-	-
Oi Kalou.....	101.67	102.50	100.00	100.00	83.33	100.00	100.00	107.14	100.00	100.00
Oyugis.....	-	-	-	79.20	-	-	-	-	-	96.08
Riochanda.....	67.05	83.33	-	113.64	77.27	-	-	-	-	65.22
Runyenjes.....	59.09	60.38	60.87	63.04	-	-	-	-	-	-
Sagana.....	65.37	80.43	-	-	-	-	-	-	-	-
Siakago.....	63.86	63.86	64.57	66.70	-	-	-	-	-	-
Siaya.....	86.40	-	-	-	-	-	-	-	65.96	-
Soko Mjinga.....	71.79	72.06	-	85.01	94.23	-	94.08	94.12	98.08	-
Sotik.....	64.00	65.50	68.80	70.00	70.00	70.00	-	-	-	-
Tala.....	70.00	70.00	70.00	70.00	78.00	80.00	-	-	80.00	80.00
Thika.....	77.44	64.17	73.33	97.22	94.50	86.55	75.46	-	86.67	97.07
Turbo.....	85.00	86.25	90.00	97.50	106.25	121.25	109.00	100.00	100.00	-
Ukunda.....	90.00	84.00	82.00	80.00	77.50	-	-	-	85.00	-
Unguja.....	87.11	-	-	-	-	-	-	-	79.79	-
Voi.....	86.67	80.26	-	-	102.00	95.00	-	-	-	-
Wote.....	76.00	71.00	77.50	78.75	100.00	100.00	-	-	95.00	100.00
Total.....	78.15	75.59	76.53	83.44	92.04	96.35	91.74	89.68	85.23	84.91

Table 10: Exports of Coffee and Tea

Month	COFFEE *		TEA	
	Quantity (MT)	Value '(KSh. Million)	Quantity (MT)	Value '(KSh. Million)
2018				
January.....	2,509.26	1,285.98	48,446.76	14,964.45
February....	2,834.28	1,612.42	47,356.65	14,656.94
March.....	3,936.10	2,236.94	34,487.70	10,470.94
April.....	4,550.24	2,822.20	33,564.66	9,829.58
May.....	5,572.91	3,209.36	42,532.98	11,703.03
June.....	4,649.03	2,664.46	45,182.21	12,463.24
July.....	4,683.09	2,457.05	45,242.32	12,226.12
August.....	2,972.69	1,546.91	38,022.53	9,919.47
September..	2,519.53	1,141.39	40,267.54	10,478.62
October.....	3,521.39	1,467.33	43,893.85	11,327.26
November...	4,619.48	1,729.50	44,107.54	11,014.55
December...	2,311.60	921.35	38,680.96	9,781.31
2019				
January.....	3,469.39	1,498.72	48,622.81	11,831.30
February....	4,567.37	1,903.18	41,026.62	9,638.24
March.....	4,351.34	2,256.18	42,457.17	9,910.41
April.....	4,551.54	2,500.94	36,883.92	8,630.54
May.....	5,489.90	2,699.81	36,993.68	9,292.80
June.....	4,548.70	1,963.94	29,355.17	7,154.11
July.....	5,115.45	1,713.18	33,657.14	7,788.40
August.....	3,931.89	1,461.51	41,275.96	9,458.09

Source: KRA Customs and Border Control Services department

* Coffee, not Roasted

MT denotes Metric tonnes

Table 11: Monthly Exports of Fresh Horticultural Produce

Month	Cut-flowers				Fruits				Vegetable			
	2018		2019*		2018		2019*		2018		2019*	
	Quantity (MT)	Value (KSh Million)	Quantity (MT)	Value (KSh Million)	Quantity (MT)	Value (KSh Million)	Quantity (MT)	Value (KSh Million)	Quantity (MT)	Value (KSh Million)	Quantity (MT)	Value (KSh Million)
January.....	15,941.08	12,354.09	15,354.55	9,939.87	2,897.01	458.01	3,241.48	507.45	8,293.18	2,086.58	9,794.17	2,503.41
February.....	17,501.03	12,682.70	17,598.49	10,914.69	5,973.81	827.86	8,564.62	1,236.09	6,128.07	2,946.02	7,016.72	1,869.56
March.....	14,686.27	8,438.88	16,209.75	8,861.73	10,758.95	2,079.12	12,183.15	1,757.85	7,548.81	2,098.62	5,357.63	1,826.03
April.....	12,833.44	9,116.46	15,381.62	9,959.90	11,995.51	1,627.26	10,403.68	1,542.81	4,825.37	2,130.99	5,149.66	2,171.14
May.....	13,329.46	11,531.07	15,120.42	9,355.87	7,535.17	1,076.26	8,915.77	1,152.12	6,792.62	1,949.64	5,275.12	1,810.50
June.....	9,617.48	6,986.57	11,591.11	6,137.83	6,948.90	1,241.66	7,038.09	1,201.85	4,946.37	1,410.29	5,770.09	3,746.19
July.....	9,794.81	5,131.97	11,074.20	6,187.88	7,020.27	1,213.97	8,546.38	1,556.23	4,421.85	1,387.96	5,218.74	1,736.80
August.....	11,560.38	10,669.69	14,157.26	6,611.52	8,403.10	1,608.97	4,035.10	522.03	7,090.14	2,842.46	5,061.47	1,679.77
Sept.....	12,854.01	8,052.20			5,989.53	1,268.93			10,148.38	2,535.59		
October.....	15,319.05	9,029.33			2,235.80	393.45			10,841.18	2,617.76		
Nov.....	14,862.36	12,109.92			2,577.43	465.46			8,819.18	2,426.02		
Dec.....	12,927.72	8,089.85			3,306.50	570.14			5,963.54	3,253.25		
Total.....	161,227.10	114,192.74	116,487.40	67,969.29	75,641.97	12,831.09	62,928.27	9,476.42	85,818.72	27,685.19	48,643.60	17,343.41

Source: Horticultural Directorate

* Provisional

Table 12: External Trade

KSh Million						
Month	Domestic Exports	Re-Exports	Total Exports	Total Imports	Volume of Trade	Home use Imports
2018⁺						
January.....	46,227.50	7,219.43	53,446.93	157,516.94	210,963.87	150,660.74
February....	49,398.06	7,873.55	57,271.61	128,943.27	186,214.89	125,930.74
March.....	46,310.17	4,682.59	50,992.76	152,038.51	203,031.27	142,361.49
April.....	43,138.42	6,909.26	50,047.68	150,002.08	200,049.76	138,412.71
May.....	47,728.87	7,585.00	55,313.87	168,020.10	223,333.98	161,799.90
June.....	48,724.34	4,194.90	52,919.25	142,525.50	195,444.74	137,593.90
July.....	46,391.15	6,493.71	52,884.86	152,648.13	205,532.99	150,329.69
August.....	43,297.56	7,689.34	50,986.90	149,306.97	200,293.87	139,351.18
September..	42,637.13	4,140.25	46,777.38	129,796.06	176,573.44	125,826.66
October.....	44,137.25	5,821.96	49,959.22	149,245.11	199,204.32	137,316.22
November...	44,073.60	4,241.97	48,315.57	153,491.79	201,807.35	149,201.71
December...	39,405.36	4,607.23	44,012.59	126,686.88	170,699.47	121,827.30
2019*						
January.....	46,362.30	6,927.94	53,290.24	155,111.66	208,401.89	140,661.13
February....	44,523.02	6,398.23	50,921.25	141,272.84	192,194.10	139,034.00
March.....	46,628.18	6,061.47	52,689.64	124,864.98	177,554.63	99,079.22
April.....	43,355.31	5,457.39	48,812.69	150,442.47	199,255.17	137,085.27
May.....	39,663.21	6,784.17	46,447.39	154,890.80	201,338.19	148,047.88
June.....	45,726.33	5,417.80	51,144.13	144,613.63	195,757.76	112,329.06
July.....	40,545.84	9,673.60	50,219.44	153,590.24	203,809.68	121,498.40
August.....	44,572.98	5,031.29	49,604.27	132,801.69	182,405.96	107,374.28

Source: Kenya Revenue Authority

⁺ Revised

Table 13(a): Major Destinations of Domestic Exports

KSh Million											
Month/Country	Uganda	Tanzania	United Kingdom	Pakistan	Netherlands	Egypt	Germany	Rwanda	USA	United Arab Emirates	France
2018											
January.....	3,522.39	1,639.15	3,474.86	7,311.82	4,190.03	2,186.67	771.23	1,052.37	2,538.08	1,746.42	520.11
February....	4,489.98	2,382.83	4,273.06	6,989.37	4,528.73	2,012.05	1,019.77	1,098.47	3,039.26	2,435.82	523.44
March.....	4,908.78	1,984.68	3,259.82	4,264.52	5,012.53	1,176.03	1,041.64	1,284.54	3,615.25	2,213.77	657.88
April.....	3,441.66	2,320.08	3,295.19	4,073.73	4,071.13	1,017.21	1,149.95	1,134.05	3,599.91	1,516.63	720.33
May.....	4,942.74	2,215.05	3,266.73	4,508.35	3,848.43	1,736.37	1,238.25	1,397.65	4,335.60	2,013.96	799.88
June.....	4,357.49	1,798.21	3,536.14	5,246.93	3,313.05	1,939.73	1,038.67	1,189.67	4,498.54	1,904.99	558.49
July.....	3,703.89	1,933.73	3,744.68	5,346.96	3,616.37	1,376.88	968.51	1,402.51	5,325.58	1,871.81	685.66
August.....	4,449.66	2,149.53	2,551.79	3,809.35	3,105.61	1,528.96	602.80	1,485.63	4,758.17	1,803.94	778.36
September..	4,099.65	1,917.12	2,920.98	4,639.27	3,731.40	1,578.65	721.62	1,199.22	4,064.64	1,843.59	867.24
October.....	4,293.07	2,177.53	3,243.80	4,276.78	3,547.80	2,081.39	895.64	1,225.99	3,753.66	2,134.14	664.72
November...	4,619.16	2,242.75	3,153.07	4,560.08	2,998.40	1,114.09	954.12	1,581.89	4,606.55	2,298.61	637.73
December...	4,172.04	2,099.46	3,231.85	4,014.59	3,345.50	1,642.86	572.15	1,072.20	2,970.39	1,333.05	491.85
2019*											
January.....	4,345.11	2,113.06	4,418.99	4,411.96	4,650.98	2,068.80	895.63	1,043.44	3,732.43	1,928.94	625.27
February....	4,353.75	2,056.67	3,720.80	4,289.18	4,902.82	1,454.58	1,233.55	1,269.53	3,305.64	1,466.29	602.51
March.....	4,535.53	2,173.74	3,700.36	4,293.95	4,824.51	1,726.32	1,033.20	1,570.68	3,905.57	1,577.08	657.19
April.....	4,107.53	2,458.48	2,698.56	3,764.79	3,486.03	1,648.32	1,262.31	1,504.01	5,172.36	1,314.89	593.37
May.....	4,118.12	2,401.50	1,986.05	3,455.38	2,572.99	1,701.92	1,137.79	1,872.06	4,181.74	1,406.15	449.66
June.....	4,588.50	2,308.09	3,825.79	2,479.45	5,367.30	1,398.00	984.07	1,771.74	4,291.21	1,869.05	715.03
July.....	4,549.48	2,400.52	3,537.36	3,188.46	2,813.01	805.22	780.57	2,150.33	4,309.96	1,442.26	869.80
August.....	3,861.65	2,614.26	3,285.76	3,192.87	3,456.79	1,982.59	850.12	2,290.21	4,469.56	1,493.76	748.19

Source: Kenya Revenue Authority

*Provisional

Table 13(b): Domestic Exports by Broad Economic Category

Value in KSh Million													
Descriptions	2018					2019*							
	Aug	Sep	Oct	Nov	Dec	Jan	Feb	March	April	May	June	July	Aug
Food and beverages.....	20,203.48	20,137.41	20,824.33	19,673.36	17,112.10	21,025.36	18,983.27	20,692.22	18,971.96	19,193.86	18,364.69	18,106.37	19,107.52
Industrial supplies (Non-Food).....	11,410.24	9,902.97	9,991.85	10,934.19	10,194.75	11,444.61	10,795.21	10,917.59	10,953.34	8,361.64	11,515.14	9,899.13	10,454.09
Fuel and Lubricants.....	255.65	411.92	488.38	378.57	178.50	318.38	272.69	300.33	350.53	340.88	124.64	175.00	1,761.29
Machinery & other capital Equipment.....	504.43	462.97	572.65	695.02	435.49	514.53	596.35	1,228.54	1,104.23	856.40	989.39	1,118.11	780.84
Transport equipment.....	395.50	271.23	384.32	671.53	528.13	486.54	586.90	505.57	744.23	377.12	465.11	405.18	497.34
Consumer goods Not elsewhere specified..	10,528.25	11,450.50	11,875.73	11,720.83	10,956.09	12,572.88	13,288.15	12,983.51	11,231.01	10,533.16	14,267.36	10,819.75	11,971.90
Goods not elsewhere specified.....	-	0.14	-	0.10	0.31	-	0.46	0.42	-	0.15	-	22.31	-
Total	43,297.56	42,637.13	44,137.25	44,073.60	39,405.36	46,362.30	44,523.02	46,628.18	43,355.31	39,663.21	45,726.33	40,545.84	44,572.98
Percentage Shares:.....													
Food and Beverages.....	46.66	47.23	47.18	44.64	43.43	45.35	42.64	44.38	43.76	48.39	40.16	44.66	42.87
Industrial Supplies (Non-Food).....	26.35	23.23	22.64	24.81	25.87	24.69	24.25	23.41	25.26	21.08	25.18	24.41	23.45
Fuel and Lubricants.....	0.59	0.97	1.11	0.86	0.45	0.69	0.61	0.64	0.81	0.86	0.27	0.43	3.95
Machinery and other Capital Equipment....	1.17	1.09	1.30	1.58	1.11	1.11	1.34	2.63	2.55	2.16	2.16	2.76	1.75
Transport Equipment.....	0.91	0.64	0.87	1.52	1.34	1.05	1.32	1.08	1.72	0.95	1.02	1.00	1.12
Consumer Goods not elsewhere specified..	24.32	26.86	26.91	26.59	27.80	27.12	29.85	27.84	25.90	26.56	31.20	26.69	26.86
Goods not elsewhere specified.....	-	0.00	-	0.00	0.00	-	0.00	0.00	-	0.00	-	0.06	-
TOTAL.....	100	100	100	100	100	100	100	100	100	100	100	100	100

Source: Kenya Revenue Authority (KRA)

*Provisional

Table 14 (a) Major Origins of Imports

											Value (KSh Million)
Month	United Arab Emirates	United Kingdom	South Africa	Saudi Arabia	Japan	India	USA	Germany	Netherlands	France	China
2018											
January.....	5,396.68	3,159.61	5,955.10	12,913.24	8,454.68	21,468.99	8,421.64	2,987.22	3,277.64	1,926.07	27,460.82
February....	9,905.83	2,290.87	4,901.65	9,645.02	6,067.21	15,332.90	5,845.90	2,985.08	1,331.88	2,084.16	25,258.07
March.....	18,589.13	2,256.46	6,446.64	14,031.70	7,849.47	11,455.19	6,665.67	3,771.61	1,474.25	1,373.02	35,566.06
April.....	22,353.41	2,288.50	5,556.46	10,404.19	7,505.30	16,568.68	4,635.84	3,995.14	1,298.71	1,916.45	29,623.45
May.....	16,077.89	2,639.18	5,485.20	13,493.78	5,609.39	18,141.58	3,113.78	6,626.71	1,500.46	1,573.98	48,641.65
June.....	8,830.67	2,768.91	6,145.49	18,885.40	7,344.82	9,083.70	2,684.04	3,184.28	1,780.01	1,697.78	36,172.60
July.....	8,139.67	2,760.69	5,953.65	21,451.55	9,137.63	14,313.12	3,913.45	4,132.34	1,311.70	2,367.15	35,314.50
August.....	11,003.85	3,093.38	4,732.03	20,262.87	8,323.90	14,726.19	3,399.50	3,345.10	1,947.04	1,804.59	29,039.38
September..	9,724.29	2,261.72	3,253.66	4,557.89	8,914.82	24,813.09	3,543.27	3,673.28	1,520.35	2,034.83	25,117.04
October.....	15,988.21	2,459.48	5,557.09	17,310.25	8,760.00	15,204.47	4,054.71	4,873.15	1,130.61	2,268.36	26,837.16
November...	15,162.36	2,787.09	5,792.41	12,713.03	13,797.14	13,643.55	3,655.81	3,032.26	1,602.66	2,801.76	27,835.45
December...	6,244.67	2,789.51	4,954.14	17,034.05	8,058.31	10,500.64	3,311.54	3,993.06	1,188.80	2,081.33	23,960.20
2019*											
January.....	15,109.48	2,631.56	6,775.82	13,077.49	7,831.07	13,048.66	4,646.86	3,211.09	2,240.73	2,044.78	30,006.98
February....	9,843.51	2,602.96	4,984.79	6,617.74	6,503.80	13,218.97	5,114.29	4,527.45	14,851.90	1,516.78	29,120.56
March.....	6,566.24	3,110.39	5,624.02	17,192.40	5,560.32	10,938.14	4,071.18	2,783.86	1,353.53	3,043.31	18,175.05
April.....	21,733.74	2,593.48	6,137.31	8,056.05	9,797.85	19,506.78	5,125.00	5,863.19	870.60	1,477.04	26,405.48
May.....	19,289.50	3,149.41	7,217.11	9,275.48	7,313.20	17,978.49	8,873.29	3,340.39	2,261.64	2,189.18	28,258.78
June.....	15,572.69	2,913.54	7,465.52	12,974.25	8,858.91	11,972.46	3,636.02	2,433.07	884.11	1,215.66	37,691.95
July.....	13,758.32	2,340.76	8,643.77	15,620.43	8,909.78	11,679.11	6,059.70	7,364.49	2,976.70	1,567.94	32,489.43
August.....	8,364.77	2,182.43	5,738.84	5,630.84	8,164.55	19,343.56	4,598.54	2,527.58	958.30	2,252.42	24,282.05

Source: Kenya Revenue Authority

*Provisional

Table 14(b): Imports by Broad Economic Category

Descriptions	Value in KSh Million												
	2018					2019*							
	Aug	Sep	Oct	Nov	Dec	Jan	Feb	Mar	Apr	May	Jun	July	Aug
Food and beverages.....	14,368.20	11,185.81	12,536.67	16,617.81	11,763.28	16,707.97	12,192.69	14,997.32	14,942.96	16,428.24	15,840.13	15,192.99	18,120.30
Industrial supplies (Non-Food)	52,703.92	45,475.94	54,144.66	47,714.60	41,837.71	58,373.17	43,619.35	47,371.53	50,105.36	49,450.80	50,038.77	52,749.80	49,023.06
Fuel and Lubricants.....	32,880.38	23,068.28	28,657.31	29,822.49	23,130.65	26,421.76	24,222.45	21,740.91	36,072.07	35,181.94	29,915.61	27,966.59	20,806.33
Machinery & other capital Equipment.....	21,245.35	23,704.19	25,784.68	30,125.55	23,544.06	25,260.90	33,547.46	18,316.86	24,376.75	22,417.96	19,757.26	28,901.23	18,324.87
Transport equipment.....	15,263.91	12,797.24	13,969.56	13,442.94	13,177.65	14,982.67	11,675.71	11,675.71	13,255.27	15,901.07	17,938.45	15,217.41	13,751.76
Consumer goods Not elsewhere specified..	12,725.38	11,991.45	13,020.67	14,515.77	12,108.27	12,292.74	10,589.45	10,589.45	11,071.39	14,112.92	10,530.03	12,029.64	10,932.34
Goods not elsewhere specified.....	119.83	1,573.16	1,131.57	1,252.63	1,125.26	1,072.44	173.21	173.21	618.69	1,397.85	593.39	1,532.57	1,843.02
Total	149,306.97	129,796.06	149,245.11	153,491.79	126,686.88	155,111.66	141,272.84	124,864.98	150,442.47	154,890.80	144,613.63	153,590.24	132,801.69
Percentage Shares:.....													
Food and Beverages	9.62	8.62	8.40	10.83	9.29	10.77	8.63	12.01	9.93	10.61	10.95	9.89	13.64
Industrial Supplies (Non-Food).....	35.30	35.04	36.28	31.09	33.02	37.63	30.88	37.94	33.31	31.93	34.60	34.34	36.91
Fuel and Lubricants	22.02	17.77	19.20	19.43	18.26	17.03	17.15	17.41	23.98	22.71	20.69	18.21	15.67
Machinery and other Capital Equipment....	14.23	18.26	17.28	19.63	18.58	16.29	23.75	14.67	16.20	14.47	13.66	18.82	13.80
Transport Equipment.....	10.22	9.86	9.36	8.76	10.40	9.66	10.96	9.35	8.81	10.27	12.40	9.91	10.36
Consumer Goods not elsewhere specified..	8.52	9.24	8.72	9.46	9.56	7.93	8.46	8.48	7.36	9.11	7.28	7.83	8.23
Goods not elsewhere specified.....	0.08	1.21	0.76	0.82	0.89	0.69	0.18	0.14	0.41	0.90	0.41	1.00	1.39
TOTAL	100	100	100	100	100	100	100	100	100	100	100	100	100

Source: Kenya Revenue Authority

*Provisional

Table 14 (c): Mobile Money Transactions

As at the end of month	Mobile money Agents	Mobile money subscriptions (millions)	Number of Transactions (millions)*	Value (KSh billions)
2018				
January	188,029	37.84	136.66	322.98
February	192,117	38.42	132.30	300.85
March	196,002	39.34	147.52	337.11
April	201,795	40.29	142.06	313.00
May	202,387	41.73	140.95	328.97
June	197,286	42.58	137.41	317.67
July	200,227	42.61	143.09	332.35
August	202,627	43.56	149.52	348.91
September	203,359	44.27	145.99	327.66
October	211,961	45.44	155.16	343.23
November	206,312	46.23	153.15	343.87
December	205,745	47.69	155.77	367.77
2019				
January	201,336	40.30	154.24	368.02
February	212,252	50.04	144.49	328.15
March	226,957	50.36	161.38	368.39
April	230,220	52.05	155.80	360.22
May	224,825	52.20	153.26	364.25
June	222,484	46.80	149.73	346.85
July	222,087	53.89	152.98	366.39
August	222,479	54.78	151.83	368.50

Source: Central Bank of Kenya

Table 14(d): International trade in ICT

KSh Million

Imports	2018						2019						
	July	Aug	Sep	Oct	Nov	Dec	Jan	Feb	March	April	May	June	July
Office machines ¹	104.43	147.57	232.83	59.04	101.24	722.12	91.44	187.30	183.86	246.84	371.89	39.82	511.73
Automatic data processing machines, storage units etc.....	1,259.76	1,321.71	601.80	831.79	1,274.83	681.60	1,388.08	1,152.82	2,002.55	2,369.65	1,349.49	755.49	819.14
Part and accessories ²	56.09	49.62	68.88	49.28	58.18	41.68	65.45	50.88	77.66	27.30	68.51	36.10	15.09
Monitors and projectors and reception apparatus for television ³	876.14	775.11	591.03	582.63	993.44	469.56	784.62	635.53	719.59	663.28	739.52	624.26	989.59
Reception apparatus for radio broadcasting ⁴	12.45	26.62	17.42	24.23	458.31	25.62	18.96	29.30	26.55	15.91	19.14	40.02	46.45
Recording equipments ⁵	45.61	30.89	14.31	16.97	331.65	22.06	21.67	23.53	17.17	26.06	28.20	24.86	21.57
Telecommunications equipment ⁶	2,762.25	2,341.38	2,206.31	1,453.03	3,507.65	2,314.89	4,480.02	1,947.48	1,367.73	1,346.14	1,778.31	927.17	1,128.13
Exports													
Office machines ¹	0.93	3.89	7.08	0.27	3.24	3.97	8.09	5.29	0.34	11.02	4.44	0.23	0.70
Automatic data processing machines, storage units etc.....	28.10	8.47	25.37	27.59	22.32	32.22	17.90	60.84	74.66	25.38	45.41	87.61	74.03
Part and accessories ²	2.85	1.49	11.70	-	1.45	1.53	1.50	7.41	1.28	5.18	0.03	6.92	4.37
Monitors and projectors and reception apparatus for television ³	52.71	1.25	21.77	26.23	0.46	9.79	2.71	41.17	3.47	3.32	4.02	14.40	28.44
Reception apparatus for radio broadcasting ⁴	0.09	0.00	0.20	0.05	0.03	1.63	0.01	0.01	0.03	0.48	1.45	3.57	1.28
Recording equipments ⁵	0.07	0.09	0.41	0.16	0.02	0.22	0.02	0.01	0.24	0.05	-	0.04	0.64
Telecommunications equipment ⁶	82.25	117.56	33.40	9.76	39.20	23.94	49.42	60.03	21.88	114.91	23.47	15.00	342.64

¹ Electronic calculating machines, cash registers, accounting machines, postage-franking machines, ticket issuing machines, reproducing and displaying machines with calculating functions, duplicating machines and their parts/accessories etc

² For office machines and data processing machines

³ Include Television sets, decoders etc

⁴ Whether or not combined with sound recording or reproducing apparatus or a clock

⁵ Sound recording, video recording or reproducing apparatus including or not including a video tuner

⁶ Such as computer, laptops, networking equipments etc plus their parts and accessories such as telephone sets, microphones, electric sound amplifier sets Television cameras, digital or video cameras recorders, radio or tv transmission apparatus etc

Table 15(a): Local Electricity Generation by Source

							KWh Million
Month	Hydro	Geo - Thermal	Thermal*	Wind	Solar	Co-Generation	Total
2018							
January	222.95	430.49	242.34	3.26	-	1.45	900.49
February	193.43	387.02	249.13	6.86	-	0.62	837.06
March	248.39	448.12	202.18	4.11	-	0.07	902.87
April	316.85	427.73	138.66	3.24	-	0.07	886.55
May	385.88	447.05	82.92	1.70	0.02	0.08	917.65
June	400.86	430.00	82.37	1.23	0.01	0.01	914.48
July	420.32	438.12	86.86	1.69	-	0.02	947.01
August	417.37	426.57	117.23	2.52	0.01	0.02	963.72
September	392.07	439.80	85.33	7.46	0.01	0.02	924.69
October	365.42	432.03	87.21	76.86	0.01	0.02	961.55
November	340.07	397.58	80.15	133.40	5.77	0.02	956.99
December	282.78	423.32	91.53	133.26	7.79	0.04	938.72
2019*							
January	278.92	417.35	114.07	147.55	7.99	0.02	965.90
February	253.91	374.43	98.56	146.21	7.02	0.01	880.14
March	282.83	445.10	99.00	144.00	8.07	0.02	979.02
April	191.99	397.66	181.14	142.21	8.19	0.01	921.20
May	242.63	427.38	110.34	164.12	7.91	0.00	952.39
June	272.42	413.44	146.23	92.38	7.07	0.05	931.59
July	268.91	440.30	133.41	124.89	7.09	0.02	974.62
August	251.48	425.46	131.77	151.43	7.44	0.03	967.61
September	233.80	453.93	104.77	152.91	7.91	0.03	953.34

*Provisional

Fig. 7: Electricity Generation by Source

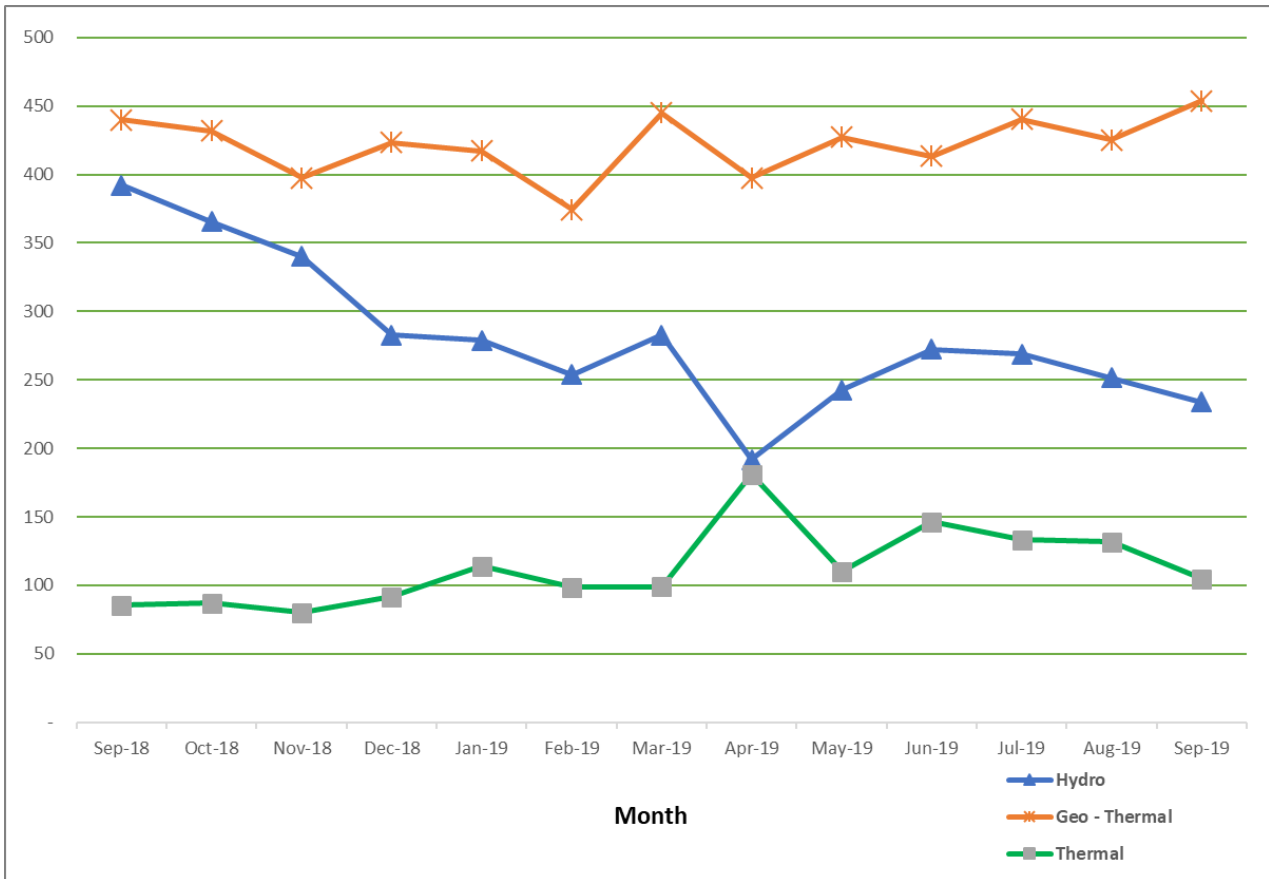


Table 15(b): Generation and Consumption of Electricity

Million KWh										
Month	Generation					Consumption				
	Local Generation	Imports			Total Generation	Total KPLC Sales	Exports			
		Uganda	Tanzania	Ethiopia			Uganda	Tanzania	Total Exports	
2018										
January	900.49	19.04	-	0.35	19.39	919.88	731.06	0.96	0.22	1.18
February	837.06	18.62	-	0.32	18.94	856.00	684.62	0.93	0.09	1.02
March	902.87	11.03	-	0.26	11.29	914.16	745.60	3.20	0.04	3.24
April	886.55	8.20	-	0.14	8.34	894.89	688.30	3.55	0.06	3.61
May	917.65	8.39	-	-	8.39	926.04	712.00	3.24	0.01	3.25
June	914.48	8.38	-	-	8.38	922.86	726.76	3.20	-	3.20
July	947.01	8.19	-	-	8.19	955.20	709.30	3.35	-	3.35
August	963.72	12.06	-	-	12.06	975.78	730.67	2.67	-	2.67
September	924.69	7.60	-	-	7.60	932.29	740.93	3.31	-	3.31
October	961.55	8.90	-	-	8.90	970.45	737.71	3.26	-	3.26
November	956.99	8.86	-	-	8.86	965.85	750.97	3.36	-	3.36
December	938.72	9.89	-	-	9.89	948.61	714.86	3.76	-	3.76
2019*										
January	965.90	15.18	-	-	15.18	981.08	778.12	1.85	0.01	1.86
February	880.14	13.92	-	0.36	14.28	894.42	691.32	1.91	-	1.91
March	979.02	16.75	-	0.39	17.14	996.16	752.26	1.70	-	1.70
April	921.20	26.85	-	0.37	27.22	948.42	736.38	0.71	-	0.71
May	952.39	24.23	-	0.30	24.53	976.92	733.14	0.19	-	0.19
June	931.59	15.50	-	0.35	15.85	947.44	722.34	0.70	-	0.70
July	974.62	16.88	-	0.29	17.17	991.79	747.56	0.68	-	0.68
August	967.61	23.75	-	0.42	24.17	991.78	749.32	0.60	-	0.60
September	953.34	10.97	-	0.39	11.36	964.70	738.73	1.76	-	1.76

*Provisional

Table 15(c): Consumption of Petroleum Fuels

'000 MT								
Month	AGO (Light Diesel Oil)	Jet	Fuel Oil	Motor Spirit	Illuminating Kerosene	IDO (Heavy Diesel Oil)	LPG	Aviation Gasoline
2018								
January.....	188.50	58.94	55.21	111.36	36.78	0.00	18.48	0.12
February.....	174.78	54.30	45.29	105.75	38.55	0.00	16.24	0.11
March.....	167.95	56.94	56.66	121.07	35.00	0.02	20.40	17.62
April.....	181.18	53.94	29.19	111.36	36.11	0.00	21.65	0.12
May.....	195.01	53.71	26.62	123.34	39.75	0.00	22.21	0.11
June.....	183.63	51.39	25.00	114.63	32.58	0.00	22.38	0.10
July.....	191.28	56.26	25.02	113.14	30.01	0.00	22.58	0.10
August.....	212.37	63.75	28.50	126.09	24.98	0.17	21.48	0.12
September.....	162.57	60.89	23.71	92.88	16.80	0.00	19.52	0.09
October.....	186.38	52.79	37.11	112.84	16.53	0.00	12.65	0.11
November.....	175.30	51.87	25.70	113.73	18.85	0.02	13.96	0.11
December.....	154.21	59.61	24.00	112.81	13.44	0.00	10.77	0.12
2019*								
January.....	183.69	61.25	30.61	119.69	19.54	0.00	28.49	1.33
February.....	183.39	56.64	26.00	115.41	16.00	0.00	26.91	0.74
March.....	186.17	56.48	33.37	113.79	14.83	0.83	20.01	1.40
April.....	195.90	53.49	44.77	125.34	15.38	0.00	18.72	1.21
May.....	195.87	54.50	38.89	121.46	15.45	0.00	18.72	1.38
June.....	169.38	55.05	44.80	104.97	12.52	0.00	13.27	1.28

Source: Ministry of Energy and Petroleum

MT: Denotes Metric Tonnes

*Provisional

Table 15(d): Average Retail Prices for Selected Fuel Products within Nairobi

KSh per litre			
Period	Motor Gasoline Premium	Light Diesel Oil (Gasoil)	Illuminating Kerosene
2018			
January.....	106.30	94.82	74.78
February....	107.92	96.96	76.75
March.....	107.46	97.86	77.45
April.....	106.83	97.86	76.72
May.....	107.17	98.64	78.22
June.....	108.81	103.60	84.10
July.....	112.20	103.25	85.73
August.....	113.73	102.74	84.95
September..	116.79	108.12	108.41
October.....	115.73	109.72	108.84
November...	116.79	108.12	108.41
December...	113.54	112.28	105.22
2019			
January.....	104.21	102.24	101.70
February....	100.09	95.96	96.50
March.....	101.35	96.61	99.46
April.....	106.60	102.13	102.22
May.....	112.03	104.37	104.62
June.....	115.05	104.72	104.26
July.....	115.39	103.88	101.97
August.....	112.53	100.60	103.95
September..	112.81	103.04	100.64

Table 15(e): Average Retail Prices for Selected Fuels in Kenya

Period	Motor Gasoline Premium (KSh per Litre)	Light Diesel Oil (KSh per Litre)	Illuminating Kerosene (KSh per Litre)	L.P.G (KSh per 13 Kg)	Charcoal (KSh per 4 Kg Tin)
2018					
January.....	107.17	95.79	75.74	2,140.37	83.47
February.....	108.79	97.92	77.71	2,150.20	84.49
March.....	108.33	98.82	78.41	2,169.19	107.36
April.....	107.70	98.82	77.68	2,172.24	125.48
May.....	108.04	99.60	79.18	2,164.43	135.64
June.....	109.67	104.55	85.05	2,170.92	138.13
July.....	113.07	104.21	86.69	2,176.31	137.39
August.....	114.58	103.69	85.90	2,177.32	137.71
September.....	117.54	108.97	109.25	2,187.21	141.24
October.....	116.48	110.57	109.68	2,185.79	140.93
November.....	117.54	108.97	109.25	2,141.46	141.12
December.....	114.30	111.89	106.15	2,193.42	141.62
2019					
January.....	104.99	103.10	102.56	2,193.13	141.22
February.....	101.13	96.83	102.56	2,189.99	141.04
March.....	102.13	97.47	97.63	2,191.84	140.42
April.....	107.57	103.09	100.31	2,184.85	145.05
May.....	112.79	105.23	102.49	2,193.17	146.24
June.....	115.82	105.57	105.48	2,192.25	144.14
July.....	116.14	104.74	105.11	2,171.47	145.15
August.....	111.70	104.92	100.60	2,150.27	144.66
September.....	108.83	102.82	101.94	2,124.79	147.17

Fig. 8: Average Prices for Liquefied Petroleum Gas in Kenya ('000 KSh per 13 Kg cylinder)

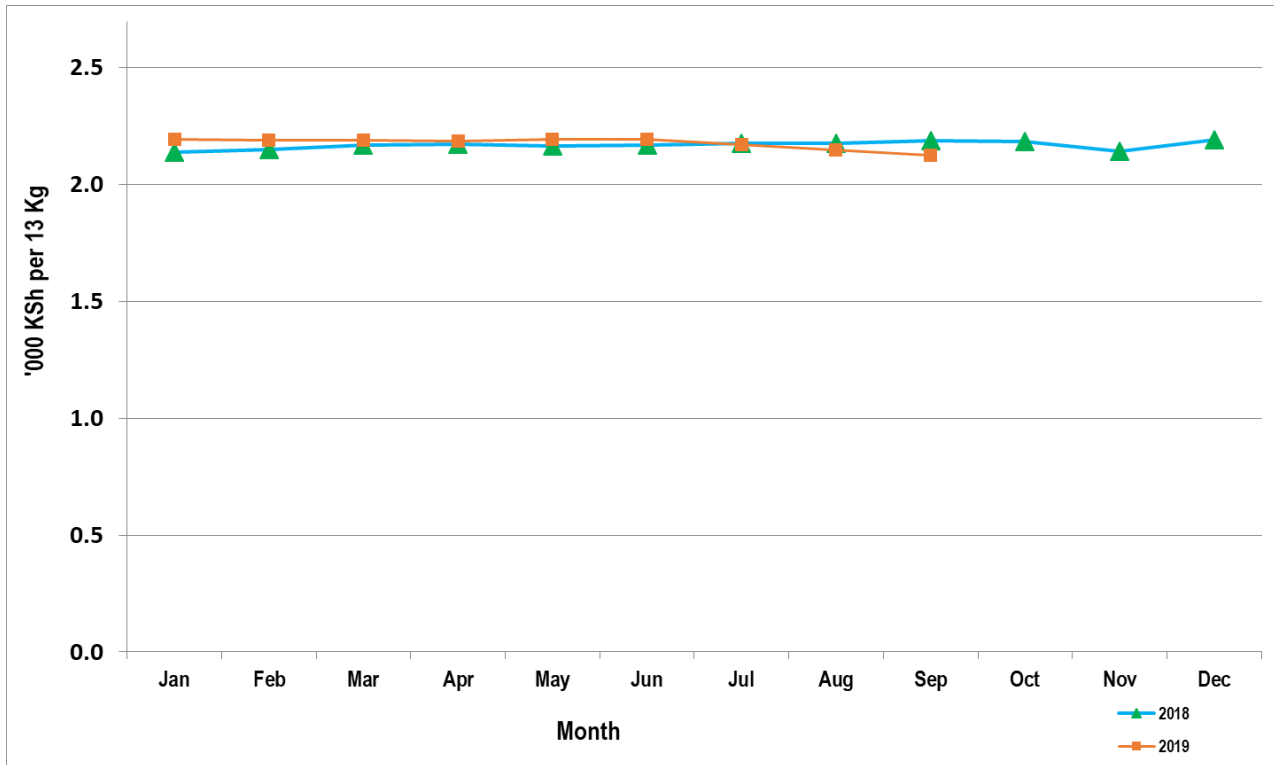


Table 15(f): Murban ADNOC Crude Oil Prices

Month/Year	US\$/ BBL					
	2014	2015	2016	2017	2018	2019
January.....	109.75	46.40	29.95	55.35	66.28	60.81
February.....	109.95	56.55	33.00	56.10	65.98	65.64
March.....	108.30	56.10	38.20	52.60	66.31	68.60
April.....	107.95	60.55	42.00	53.40	70.97	73.05
May.....	109.15	65.75	47.35	51.45	76.71	69.70
June.....	111.65	63.70	49.05	47.30	73.22	62.75
July.....	109.50	57.70	44.60	48.60	76.00	64.86
August.....	104.25	48.85	48.85	48.85	74.91	60.16
September.....	97.95	46.60	45.50	55.70	78.75	62.39
October.....	87.35	47.30	51.35	63.83	81.28	
November.....	77.00	43.55	46.15	63.65	68.05	
December.....	60.65	37.25	54.15	62.06	59.33	

US\$/ BBL: US Dollar per Barrel

Price: Abu Dhabi Free On Board (FOB)

ADNOC: Abu Dhabi National Oil Corporation

Table 16: Value of Building Plans Approved

KSh Million

Month	Actual Value of Buildings			Real *		
	Residential	Non-Residential	Aggregate	Residential	Non-Residential	Aggregate
2018						
January.....	13,122.47	6,824.92	19,947.39	154.20	78.25	231.85
February.....	10,917.29	9,822.84	20,740.13	128.29	112.62	241.07
March.....	12,810.54	6,607.25	19,417.78	150.53	75.75	225.70
April.....	-	-	-	-	-	-
May.....	12,917.29	7,122.58	20,039.87	151.79	81.66	232.93
June.....	13,409.58	7,207.25	20,616.83	157.57	82.63	239.64
July.....	10,624.92	7,201.69	17,826.61	124.85	82.57	207.20
August.....	10,735.63	4,880.78	15,616.41	126.15	55.96	181.51
September.....	11,132.49	6,147.54	17,280.03	130.82	70.48	200.85
October.....	9,696.37	8,082.13	17,778.50	113.94	92.66	206.65
November.....	15,319.80	9,354.40	24,674.20	180.02	107.25	286.80
December.....	11,152.41	5,206.55	16,358.96	131.05	59.69	190.15
2019						
January.....	10,435.29	7,064.94	17,500.23	114.03	75.22	188.92
February.....	10,357.13	7,435.42	9,792.55	113.18	79.16	105.71
March.....	12,256.40	8,991.05	21,247.45	133.94	95.73	229.37

Source: Nairobi City County

* Actual deflated by relevant construction cost indices (Dec1972 =100)

- No Building plans were approved

Table 17(a): Domestic Production of Sugar

Month/Year	Metric Tonnes						
	2013	2014	2015	2016	2017	2018	2019*
January.....	49,046	64,298	63,227	64,499	53,071	62,819	53,060
February.....	50,036	60,044	57,917	59,863	49,094	53,833	46,139
March.....	43,647	63,365	63,389	65,708	42,238	49,148	45,418
April.....	39,151	47,279	46,280	48,802	26,230	36,682	34,521
May.....	36,529	44,094	44,081	45,156	15,246	28,933	35,257
June.....	49,512	42,866	46,098	53,797	16,113	28,320	28,544
July.....	61,802	55,912	47,957	56,948	17,882	30,105	25,097
August.....	58,687	50,140	54,089	52,232	10,892	35,646	32,705
September.....	50,303	47,915	61,069	44,686	21,649	37,652	
October.....	52,751	42,197	56,360	48,929	32,296	45,324	
November.....	54,752	34,455	43,401	51,298	43,175	38,768	
December.....	53,994	64,298	48,089	46,422	49,240	38,268	
Total.....	600,210	592,668	631,957	638,340	377,126	485,498	300,741

Source: Sugar Directorate

*Provisional

Table 17(b): Production of Soft Drinks

	'000 Litres						
Month	2013	2014	2015	2016	2017	2018	2019*
January	32,809	39,007	41,348	41,348	50,409	52,062	51,733
February	36,068	39,146	41,440	41,440	43,353	49,685	50,806
March	42,552	40,320	48,865	48,865	50,623	52,580	51,419
April	27,345	37,885	42,148	42,148	46,399	45,690	54,515
May	27,581	40,430	36,874	36,874	40,742	41,482	51,210
June	30,919	28,706	36,274	36,202	45,875	44,827	48,736
July	28,464	33,790	32,086	32,158	41,980	43,725	
August	27,697	33,404	38,432	38,508	41,217	48,795	
September	36,026	35,899	40,176	40,291	40,221	45,956	
October	34,810	41,601	42,936	43,203	45,275	46,546	
November	36,272	40,134	40,025	40,141	45,073	50,201	
December	43,438	49,142	49,966	49,966	66,378	54,021	
Total	403,981	459,464	490,568	491,143	557,548	575,569	308,419

*Provisional

Table 17(c): Production of Assembled Vehicles

Month/Year	Numbers						
	2013	2014	2015	2016	2017	2018	2019*
January.....	435	511	601	363	276	395	433
February....	536	792	949	587	578	529	616
March.....	496	737	922	650	645	548	635
April.....	584	798	813	658	436	409	741
May.....	560	832	827	642	434	407	734
June.....	609	856	745	482	323	366	558
July.....	617	809	757	491	483	587	689
August.....	578	828	931	605	302	434	
September..	590	886	1,029	623	351	606	
October.....	652	887	1,139	357	370	569	
November...	733	724	972	461	364	476	
December...	558	586	496	376	322	327	
Total.....	6,948	9,246	10,181	6,295	4,884	5,653	3,717

**Provisional*

Table 17(d): Production of Galvanized Sheets

Month/Year	Metric Tonnes						
	2013	2014	2015	2016	2017	2018	2019*
January.....	25,528	22,090	21,304	21,330	26,230	23,919	25,390
February.....	22,874	18,573	20,078	20,102	22,994	21,890	25,480
March.....	26,296	21,267	22,797	20,120	22,574	22,048	24,451
April.....	26,010	25,989	20,674	23,109	23,225	21,434	23,198
May.....	23,866	27,433	23,132	21,980	23,081	22,271	22,480
June.....	26,147	24,465	20,358	20,180	15,424	21,434	24,663
July.....	25,007	21,779	18,415	18,320	22,640	23,252	
August.....	27,398	25,753	20,871	24,190	15,296	22,630	
September.....	25,051	26,126	20,581	21,045	24,188	23,509	
October.....	27,588	26,732	26,024	18,328	21,312	23,906	
November.....	26,628	25,763	25,764	19,143	24,357	22,877	
December.....	23,706	18,539	16,938	19,431	21,438	21,266	
Total.....	306,099	284,509	256,938	247,278	262,759	270,437	145,662

*Provisional

Table 17(e): Cement Production and Consumption

Month/Year	2015		2016		2017		2018		2019*	
	Production	Consumption	Production	Consumption	Production	Consumption	Production	Consumption	Production	Consumption
January.....	511,298	459,227	533,490	472,218	565,440	535,018	523,625	499,260	485,178	479,983
February.....	465,471	417,591	531,813	506,914	491,307	460,044	508,648	495,128	470,146	469,809
March.....	550,556	483,218	541,438	493,410	570,522	537,948	510,674	497,791	507,037	505,465
April.....	537,452	480,801	568,253	538,118	535,061	497,821	496,527	475,365	503,722	502,158
May.....	516,513	472,675	585,929	551,501	482,762	441,110	464,422	449,160	486,903	487,239
June.....	516,185	465,828	547,238	505,067	513,313	496,172	477,053	470,112	481,985	471,476
July.....	570,904	451,461	575,193	556,244	553,631	527,774	518,656	511,240	499,945	500,601
August.....	553,929	478,011	591,612	559,766	451,651	427,594	538,071	531,119	495,099	492,695
September.....	561,235	518,435	528,494	504,639	531,067	506,694	503,641	499,568		
October.....	557,589	530,913	573,034	552,243	510,140	488,813	504,959	502,719		
November.....	510,747	480,641	584,780	547,359	489,376	454,727	496,346	494,038		
December.....	486,306	455,345	545,956	514,498	536,021	484,172	487,312	481,880		
TOTAL.....	6,338,184	5,694,146	6,707,230	6,301,977	6,230,293	5,857,887	6,029,934	5,907,380	3,930,015	3,909,426

*Provisional

Table 17(f): Milk Intakes in the Formal Sector

Million Litres							
Month/Year	2013	2014	2015	2016	2017	2018	2019*
January.....	49.32	54.04	57.17	56.80	45.13	51.55	68.07
February.....	42.48	46.60	37.80	52.83	46.24	47.30	54.66
March.....	40.28	49.26	35.77	48.41	38.64	49.85	54.33
April.....	44.43	45.01	35.59	54.35	47.09	52.01	41.46
May.....	50.62	43.56	52.97	49.49	47.24	49.63	48.29
June.....	44.46	44.47	51.02	66.37	48.87	50.33	52.33
July.....	43.52	40.52	51.59	58.47	42.55	53.18	63.54
August.....	37.90	41.76	50.94	56.15	54.95	52.56	60.46
September.....	38.79	41.66	51.66	43.67	55.81	56.37	
October.....	38.87	43.52	55.42	56.93	58.14	55.25	
November.....	45.33	44.32	68.28	54.09	55.21	57.02	
December.....	47.03	45.32	58.87	50.66	51.51	68.15	
Total.....	523.03	540.04	615.85	648.22	535.71	643.20	443.14

Source: Kenya Dairy Board

* Provisional

Fig. 9: Milk Intake in the Formal Sector

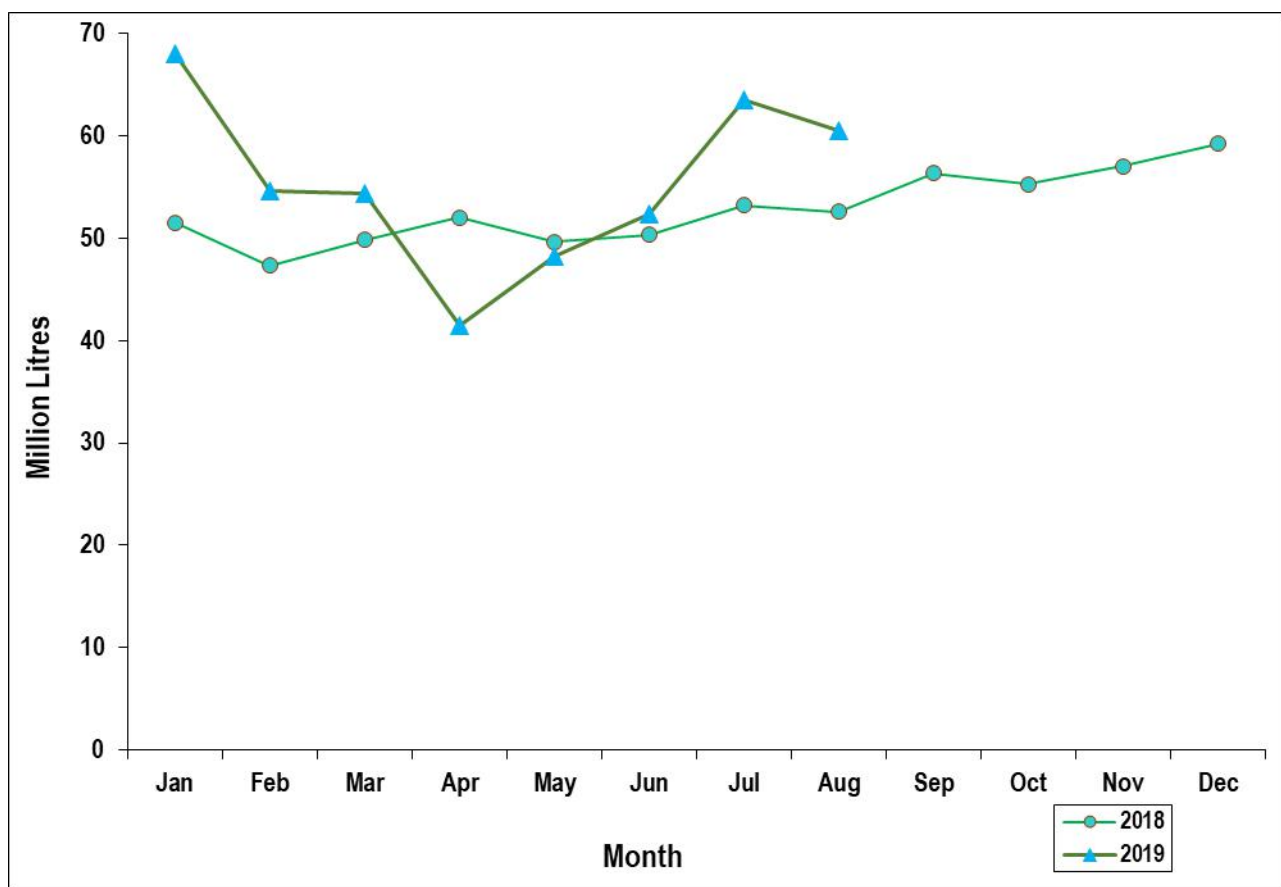


Table 18: Visitor Arrivals through J.K.I.A and M.I.A

Month	AIRPORT		Total
	JKIA	MIA	
2018			
January	105,262	14,533	119,795
February	98,532	12,792	111,324
March	100,441	11,024	111,465
April	94,236	5,205	99,441
May	93,730	4,735	98,465
June	114,097	5,157	119,254
July	141,763	9,025	150,788
August	145,231	9,589	154,820
September	114,539	9,916	124,455
October	115,597	9,343	124,940
November	103,229	8,391	111,620
December	115,856	18,403	134,259
2019			
January	112,460	15,658	128,118
February	107,060	12,864	119,924
March	93,082	20,054	113,136
April	102,981	4,744	107,725
May	98,081	3,572	101,653
June	121,484	6,615	128,099
July	150,286	8,663	158,949
August	148,816	10,988	159,804
September	121,668	9,199	130,867

Source: Kenya Tourism Board

Fig. 10: Visitor Arrivals through J.K.I.A and M.I.A

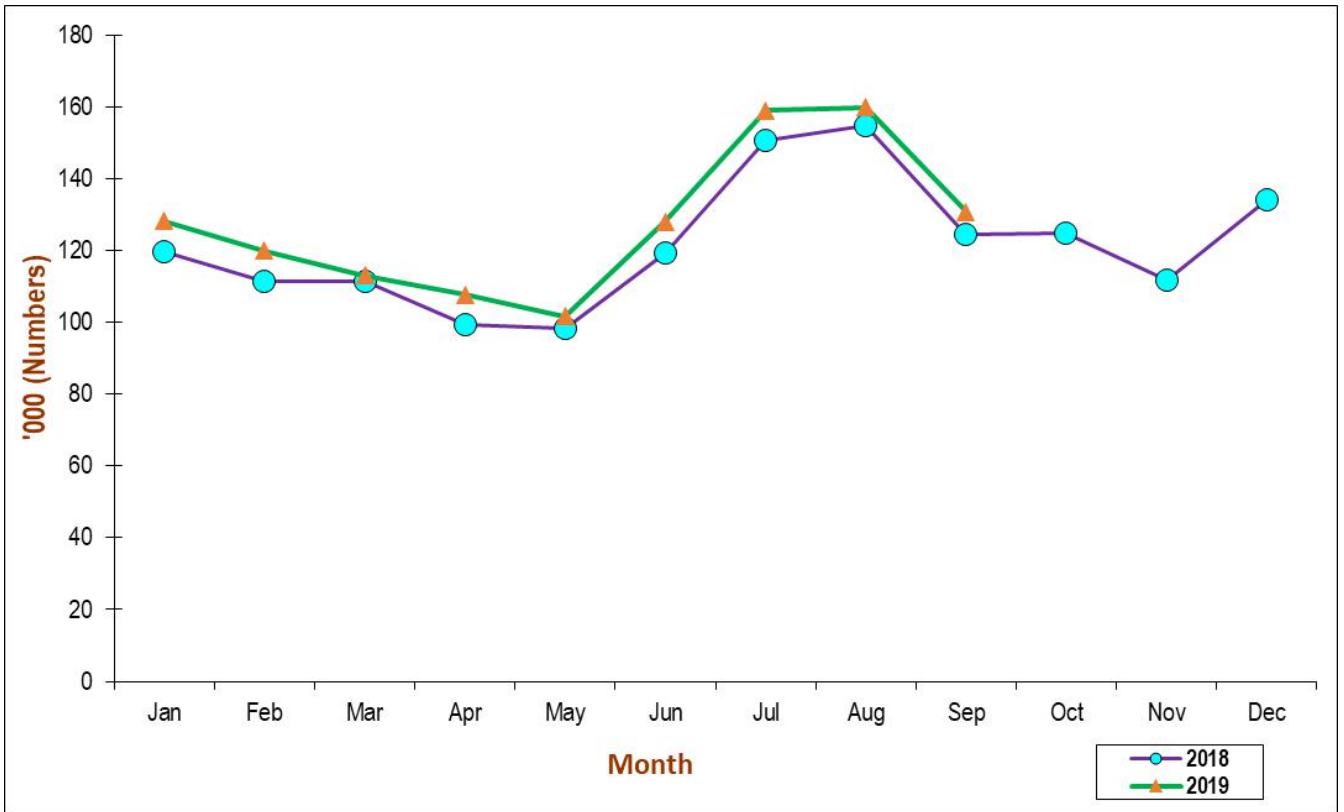


Table 19(a): Jomo Kenyatta international airport-Embarked Passengers by Port of Destination

PORTS/MONTH	2018					2019								Number
	Aug	Sep	Oct	Nov	Dec	Jan	Feb	Mar	Apr	May	Jun	Jul	Aug	
	Amsterdam	11,589	10,482	11,566	10,645	10,790	11,348	10,211	9,847	10,780	11,036	12,421	12,908	12,657
Brussels	0	0	0	0	0	0	0	0	0	0	0	0	0	
London	11,722	11,496	10,713	8,872	8,023	7,744	7,502	9,273	10,852	10,879	11,816	9,961	11,606	
Paris	5,098	3,042	4,326	7,655	6,351	5,479	3,569	5,648	6,369	4,632	6,185	5,916	6,577	
Zurich	4,881	2,558	3,988	2,165	2,727	2,849	3,134	2,307	2,271	1,866	4,806	3,027	4,472	
Other Europe	14,173	12,445	10,370	259	1,049	8,844	117	142	5	0	1,681	2,906	3,697	
Total Europe	47,463	40,023	40,963	29,596	28,940	36,264	24,533	27,217	30,277	28,413	36,909	34,718	39,009	
New York			492	3,044	4,320	5,174	2,720	3,906	3,281	3,851	4,750	6,548	7,099	
Other North America			0	0	0	0	0	0	0	0	0	0	0	
Total North America			492	3,044	4,320	5,174	2,720	3,906	3,281	3,851	4,750	6,548	7,099	
Dubai	21,975	23,570	18,597	16,003	21,654	19,759	16,002	20,560	20,540	13,967	18,432	22,731	21,197	
Jeddah	3,331	1,036	809	932	1,079	827	582	780	815	1,278	594	1,199	2,327	
Other Middle East	30,633	21,947	17,254	16,753	21,384	21,224	15,706	15,300	17,831	17,381	17,872	22,970	37,177	
Total Middle East	55,939	46,553	36,660	33,688	44,117	41,810	32,290	36,640	39,186	32,626	36,898	46,900	60,701	
Mumbai	3,300	3,179	2,299	2,656	2,942	2,115	1,522	2,247	2,336	2,121	2,429	2,701	3,213	
Bangkok	2,987	1,895	1,398	1,546	1,312	1,058	41	1,493	1,447	1,071	515	1,547	2,962	
Other Far East	1,788	1,266	1,436	764	834	694	180	573	537	673	1,398	747	2,530	
Total Far East	8,075	6,340	5,133	4,966	5,088	3,867	1,743	4,313	4,320	3,865	4,342	4,995	8,705	
Addis Ababa	20,817	16,645	14,947	15,121	16,931	14,030	14,426	15,734	14,306	14,894	15,845	16,069	20,863	
Bujumbura	1,093	528	449	667	596	510	479	405	402	843	898	1,324	1,284	
Dar-es-salaam	6,168	6,339	4,014	5,104	5,604	4,608	4,752	4,351	4,447	6,112	4,941	5,807	5,912	
Entebbe	10,189	11,317	10,864	10,863	9,747	6,940	5,744	9,098	9,552	11,332	10,324	9,490	10,089	
Kigali	4,476	4,063	4,165	4,085	5,569	3,894	4,460	5,010	4,398	3,645	3,149	6,244	5,744	
Kinshasa	292	391	416	470	282	295	155	661	699	516	1,237	965	582	
Other East & Central Africa	5,397	3,882	3,147	2,484	2,109	1,896	3,405	2,004	2,059	2,531	2,545	2,465	3,900	
Total East & Central Africa	48,432	43,165	38,002	38,794	40,838	32,173	33,421	37,263	35,863	39,873	38,939	42,364	48,374	
Mauritius	2,233	1,686	1,445	1,457	2,008	974	746	1,273	1,984	1,851	2,230	2,481	3,663	
Seychelles	1,149	699	551	567	759	435	294	602	789	611	1,298	884	1,085	
Zanzibar	3,258	2,784	2,879	2,451	3,968	2,208	3,293	2,051	2,036	1,480	3,084	2,819	4,848	
Other Indian Ocean Islands	2,179	938	1,013	903	814	386	166	1,089	1,076	786	1,161	575	2,556	
Total Indian Ocean Islands	8,819	6,107	5,888	5,378	7,549	4,003	4,499	5,015	5,885	4,728	7,773	6,759	12,152	
Abidjan	897	454	464	380	388	320	425	516	525	393	670	663	1,252	
Douala	256	1,785	363	173	99	629	259	346	281	134	314	187	114	
Lagos	2,807	1,293	1,318	1,478	1,360	1,039	684	1,404	2,115	1,234	1,103	1,496	3,144	
Accra	1,699	1,356	1,178	1,007	1,186	723	753	1,459	1,426	999	999	1,471	1,711	
Other West Africa	34	245	603	557	634	340	273	442	329	396	582	529	79	
Total West Africa	5,693	5,133	3,926	3,595	3,667	3,051	2,394	4,167	4,676	3,156	3,668	4,346	6,300	
Johannesburg	8,350	9,058	8,209	7,511	6,867	5,916	4,780	8,859	9,014	6,694	7,083	7,030	7,888	
Harare	824	1,280	1,104	778	974	567	75	662	1,049	888	707	518	755	
Lilongwe	718	835	797	1,093	1,044	654	672	810	854	879	289	995	1,094	
Lusaka	993	1,355	1,184	1,038	822	624	272	809	930	1,292	2,021	1,142	1,212	
Cape Town	0	985	0	0	0	1,566	1,505	0	1,834	0	0	2,035	0	
Other South Africa	2,282	1,548	1,215	4,528	1,085	1,074	692	1,028	974	1,124	897	1,447	2,434	
Total Southern Africa	13,167	15,061	12,509	14,948	10,792	10,401	7,996	12,168	14,655	10,877	10,997	13,167	13,383	
Cairo	2,641	2,288	2,319	2,519	2,941	2,584	2,261	2,960	2,566	2,754	2,690	3,294	3,566	
Khartoum	756	646	578	583	587	538	5	428	441	454	573	438	626	
Juba	2,655	2,161	1,829	2,737	2,264	2,841	2,183	2,361	2,233	2,201	2,248	2,643	2,411	
Other North Africa	1,303	767	604	715	462	824	564	100	4	21	11	2	14	
Total North Africa	7,355	5,862	5,330	6,554	6,254	6,787	5,013	5,849	5,244	5,430	5,522	6,377	6,617	
Other International	8,277	7,785	7,763	7,356	6,711	7,306	6,487	7,022	6,199	5,378	6,764	6,385	5,857	
Total International	203,220	176,029	156,666	147,919	158,276	150,836	121,096	143,560	149,586	138,197	156,562	172,559	208,197	

Table 19(b): Jomo Kenyatta international airport- Landed Passengers by Port of Origin

PORTS/MONTH	2018					2019							Number
	Aug	Sep	Oct	Nov	Dec	Jan	Feb	Mar	Apr	May	Jun	Jul	
Amsterdam	17,531	15,734	18,239	17,035	18,336	17,050	15,039	14,715	16,910	16,764	18,429	19,813	18,796
Brussels	0	0	0	0	0	0	0	0	227	0	0		
London	16,484	15,071	15,799	13,294	13,226	12,615	11,651	11,958	13,761	14,267	16,093	16,967	16,550
Paris	10,992	9,727	9,756	8,680	9,695	9,302	8,492	8,086	10,836	8,932	12,010	13,484	12,881
Zurich	5,670	5,044	4,751	3,736	5,505	4,383	4,173	3,801	3,939	3,788	5,638	5,981	5,767
Other Europe	13,111	11,653	11,169	8,269	8,951	8,717	7,991	7,507	6,021	7,444	9,989	8,142	12,024
Total Europe	63,788	57,229	59,714	51,014	55,713	52,067	47,346	46,067	51,694	51,195	62,159	64,387	66,018
New York			238	3,060	5,540	4,352	2,826	3,256	3,204	4,080	5,019	6,284	5,600
Other North America			0	0	0	0	0	0	0	0	0	0	0
Total North America			238	3,060	5,540	4,352	2,826	3,256	3,204	4,080	5,019	6,284	5,600
Dubai	30,553	24,933	23,028	22,262	30,198	25,590	22,110	25,473	24,277	18,521	27,097	32,954	31,006
Jeddah	3,368	3,465	2,061	2,178	2,361	1,649	1,686	1,659	1,788	1,885	2,527	2,395	2,767
Other Middle East	27,625	18,966	16,391	20,547	23,967	19,866	15,518	15,410	20,077	18,513	22,964	34,360	33,191
Total Middle East	61,546	47,364	41,480	44,987	56,526	47,105	39,314	42,542	46,142	38,919	52,588	69,709	66,964
Mumbai	8,347	7,864	7,596	6,708	7,642	8,280	7,498	8,142	8,804	9,353	7,924	8,310	8,256
Bangkok	6,944	6,117	6,165	6,288	6,311	6,462	5,254	6,453	6,635	8,464	6,187	7,102	6,686
Other Far East	2,378	2,215	2,125	2,026	2,093	1,810	1,762	1,923	1,956	1,928	3,167	4,225	2,096
Total Far East	17,669	16,196	15,886	15,022	16,046	16,552	14,514	16,518	17,395	19,745	17,278	19,637	17,038
Addis Ababa	20,902	18,531	18,014	19,074	22,580	18,609	18,232	17,775	16,441	17,288	19,104	20,506	21,968
Bujumbura	3,045	1,493	1,309	1,494	1,523	1,250	1,387	1,550	1,539	2,428	2,767	3,117	3,518
Dar-es-laalam	12,563	11,161	11,292	11,472	11,315	10,722	10,215	10,918	10,386	9,900	10,211	11,582	12,532
Entebbe	19,817	19,990	18,902	18,384	19,296	16,442	16,105	18,037	18,323	18,732	18,881	18,452	20,202
Kigali	7,620	7,616	6,830	7,332	8,019	6,628	5,834	7,527	7,080	6,966	7,331	9,335	10,578
Kinshasa	3,536	3,198	3,210	2,245	2,668	1,616	1,847	2,662	3,858	2,994	2,828	4,267	4,435
Other East & Central Africa	9,453	7,482	7,657	6,484	6,612	6,826	7,090	7,126	5,363	5,891	6,411	8,635	8,798
Total East & Central Africa	76,936	69,471	67,214	66,485	72,013	62,093	60,710	65,595	62,990	64,199	67,533	75,894	82,031
Mauritius	1,600	1,451	1,354	1,919	1,999	1,818	1,396	1,412	2,431	2,564	2,737	3,075	3,416
Seychelles	1,394	1,009	1,177	1,548	1,670	1,287	827	1,093	1,726	1,720	1,085	1,323	1,390
Zanzibar	8,532	7,360	7,249	6,399	6,914	6,423	6,857	6,197	4,971	3,678	5,976	6,767	9,346
Other Indian Ocean Islands	6,843	6,988	8,345	12,357	10,628	8,922	7,135	7,468	7,408	5,601	5,484	6,705	10,449
Total Indian Ocean Islands	18,369	16,808	18,125	22,223	21,211	18,450	16,215	16,170	16,536	13,563	15,282	17,870	24,601
Abidjan	1,712	1,849	1,752	1,507	1,546	1,410	1,586	1,954	1,654	1,658	1,590	2,246	1,984
Douala	0	0	80	962	946	858	758	942	732	688	748	1,079	1,059
Lagos	4,094	3,514	3,805	4,161	4,629	4,918	4,212	4,319	5,056	4,634	4,128	4,136	5,188
Accra	4,024	3,967	3,987	3,804	3,540	3,628	3,137	3,603	3,701	3,843	3,928	4,168	4,199
Other West Africa	4,008	4,732	3,890	2,291	2,696	1,872	1,748	2,014	2,284	2,813	2,088	2,445	2,458
Total West Africa	13,838	14,062	13,514	12,725	13,357	12,686	11,441	12,832	13,427	13,636	12,482	14,074	14,888
Johannesburg	15,449	16,130	13,698	14,543	17,842	12,813	11,916	12,660	13,536	12,227	15,585	13,909	15,288
Harare	2,711	2,500	2,206	2,982	4,398	3,227	2,002	2,210	4,171	4,276	3,875	3,459	4,122
Lilongwe	2,920	2,508	2,577	2,246	2,668	1,896	1,237	2,203	2,026	1,689	2,368	2,669	2,635
Lusaka	4,290	4,194	3,889	3,673	4,293	3,234	2,571	3,240	4,199	3,558	3,535	2,774	4,616
Cape Town	968	1,145	1,100	1,272	2,354	1,776	1,438	2,124	2,109	1,399	2,551	1,316	1,594
Other South Africa	6,712	6,757	6,325	7,122	7,956	6,200	5,071	5,726	5,970	5,754	5,749	7,039	7,582
Total Southern Africa	33,050	33,234	29,795	31,838	39,511	29,146	24,235	28,163	32,011	28,903	33,663	31,166	35,837
Cairo	2,871	2,595	2,462	2,012	2,312	2,294	1,894	1,909	1,834	1,582	1,917	2,091	2,407
Khartoum	1,810	1,962	1,948	1,818	1,549	1,016	746	804	1,183	1,486	957	988	1,494
Juba	3,796	3,274	3,045	3,082	3,667	2,578	2,952	3,693	3,438	3,125	3,019	3,329	3,563
Other North Africa	1,195	640	620	546	1,131	586	511	33	6	10	6	2	3
Total North Africa	9,672	8,471	8,075	7,458	8,659	6,474	6,103	6,439	6,461	6,203	5,899	6,410	7,467
Other International	9,538	7,353	6,338	337	6,340	6,646	7,033	6,737	8,042	3,896	932	1,480	732
Total International	304,406	270,188	260,379	255,149	294,916	255,571	229,737	244,319	257,902	244,339	272,835	306,911	321,176

Table 19(c): New Vehicle Registration

	2018				2019									Number
Body Type	Sep	Oct	Nov	Dec	Jan	Feb	Mar	Apr	May	Jun	Jul	Aug	Sep	
Saloons.....	733	1,010	879	869	932	750	663	984	890	949	1,053	794	850	
Station Wagons.....	4,803	6,958	5,914	5,814	6,598	5,432	4,561	6,605	6,576	6405	7,827	5,294	6,322	
Vans.....	409	491	452	447	506	362	392	529	555	451	531	463	570	
Pick Ups.....	616	418	496	638	423	325	343	543	432	392	518	440	399	
Mini Buses.....	56	63	70	61	169	102	151	161	183	158	211	127	159	
Buses.....	79	108	90	92	71	74	102	106	120	114	126	106	119	
Lorries.....	638	729	660	734	405	453	560	612	667	551	646	593	573	
Trailers.....	213	170	132	166	104	98	122	156	118	111	179	147	176	
Motor Cycles.....	14,756	17,661	18,043	17,286	17,664	16,048	18,304	19,717	19,063	14608	20,118	16,542	15,995	
Three Wheelers.....	554	604	626	595	776	451	833	427	557	598	649	754	708	
Wheeled Tractors..	179	191	279	211	193	283	148	182	164	116	153	142	115	
Others.....	98	63	72	80	1,236	234	255	330	376	407	430	292	295	
Totals.....	23,134	28,466	27,713	26,991	29,077	24,612	26,434	30,352	29,701	24,860	32,441	25,694	26,281	

Source: National Transport and Safety Authority

Table 19(d): Passenger and Cargo Movement on the Standard Gauge Railway

Month	PASSENGER				FREIGHT*			
	2018 ⁺		2019 ⁺		2018 ⁺		2019 ⁺	
	Number of Passengers	Revenue (Ksh Million)	Number of Passengers	Revenue (Ksh Million)	Tonnage	Revenue (Ksh Million)	Tonnage	Revenue (Ksh Million)
January.....	135,772	110.20	113,061	125.44	22,345.50	25.50	359,744.40	517.15
February.....	118,360	101.93	112,966	125.11	57,632.90	49.88	302,674.50	442.60
March.....	131,698	125.53			164,254.00	181.54		
April.....	140,581	91.97			208,576.87	258.50		
May.....	116,171	129.46			228,800.00	294.08		
June.....	127,381	132.37			268,787.00	425.34		
July.....	137,676	194.03			306,105.00	527.42		
August.....	165,971	120.75			309,902.00	429.42		
September.....	122,958	121.73			309,873.00	422.57		
October.....	128,456	165.44			344,283.00	476.13		
November.....	153,885	220.87			331,752.10	500.02		
December.....	186,718	97.29			346,362.40	500.70		
Total.....	1,665,627	1,611.57	226,027.00	250.55	2,898,673.77	4,091.09	662,418.90	959.74

Source: Kenya Railways Corporation

*Provisional

+ Revised