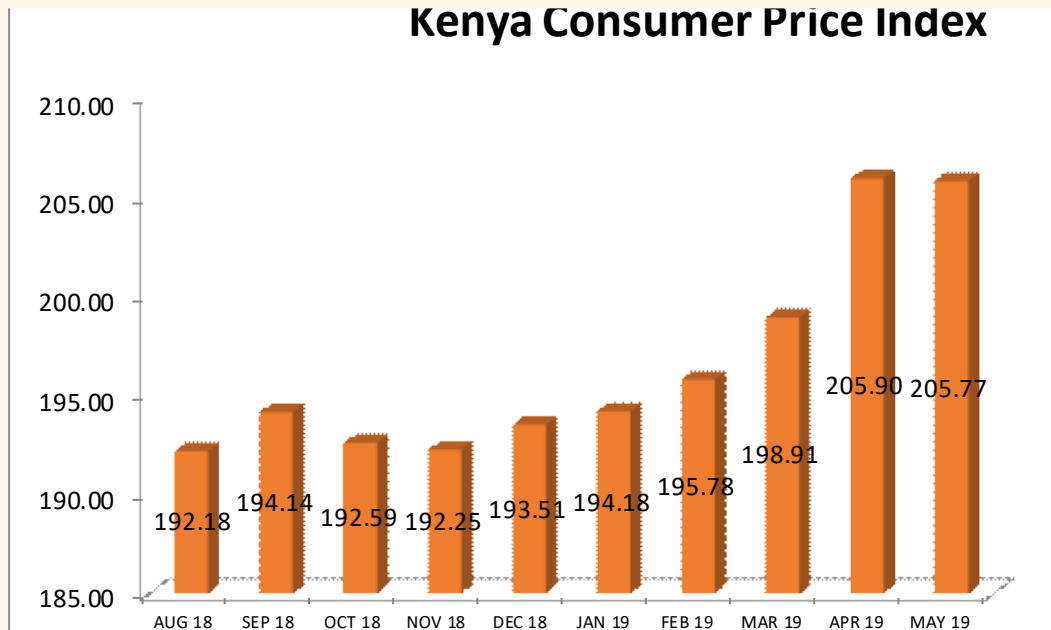


Leading Economic Indicators



Kenya Consumer Price Index



MAY 2019

Contents

Table 1(a): Kenya Consumer Price Indices	7
Table 1(b): Kenya Inflation rate	8
Table 2: Mean Foreign Exchange rates of Kenyan Shilling against Selected Major Currencies at the end of the Month	10
Table 3: Interest rate (%)	11
Table 4: Nairobi Securities Exchange	12
Table 5(a): Money Supply	14
Table 5(b): Gross Foreign Exchange Reserves	15
Table 6: Coffee Sales and Prices*	16
Table 7: Tea Production and Auction Prices	18
Table 8: Cane Deliveries	19
Table 9(a): Monthly Retail Prices for Dry Maize, 2018 (per Kg)	20
Table 9(b): Average Monthly Retail Prices for Dry Maize, 2019 (per Kg)	21
Table 9(C): Average Monthly Retail Prices for Dry Beans, 2018 (per Kg)	23
Table 9(d): Average Monthly Retail Prices for Dry Beans, 2019 (per Kg)	24
Table 10: Exports of Coffee and Tea	26
Table 11: Monthly Exports of Fresh Horticultural Produce	27
Table 12: External Trade	28
Table 13(a): Major Destinations of Domestic Exports	29
Table 13(b): Domestic Exports by Broad Economic Category	30
Table 14 (a) Major Origins of Imports	31
Table 14(b): Imports by Broad Economic Category	32
Table 14 (c): Mobile Money Transactions	33
Table 14(d): International trade in ICT	34
Table 15(a): Local Electricity Generation by Source	35
Table 15(b): Generation and Consumption of Electricity	36
Table 15(c): Consumption of Petroleum Fuels	37
Table 15(d): Average Retail Prices for Selected Fuel Products within Nairobi	38
Table 15(e): Average Retail Prices for Selected Fuels in Kenya	39
Table 15(f): Murban ADNOC Crude Oil Prices	41
Table 16: Value of Building Plans Approved	42
Table 17(a): Domestic Production of Sugar	43
Table 17(b): Production of Soft Drinks	44
Table 17(c): Production of Assembled Vehicles	45
Table 17(d): Production of Galvanized Sheets	46
Table 17(e): Cement Production and Consumption	47
Table 17(f): Milk Intakes in the Formal Sector	48
Table 18: Visitor Arrivals through J.K.I.A and M.I.A	49
Table 19(a): Jomo Kenyatta international airport-Embarked Passengers by Port of Destination	51
Table 19(b): Jomo Kenyatta international airport- Landed Passengers by Port of Origin	52
Table 19(c): New Vehicle Registration	53
Table 19(d): Passenger and Cargo Movement on the Standard Gauge Railway	54

LIST OF FIGURES

	Page Number
Fig. 1: Inflation rates	9
Fig. 2: End of Month Mean Exchange rate of Kenya Shillings against Major Selected Currencies	10
Fig. 3: Nairobi Securities Exchange 20 Share Index	13
Fig. 4: Coffee Sales at the Nairobi Coffee Exchange	17
Fig. 5: Tea Production	18
Fig. 6: Cane Deliveries	19
Fig. 7: Electricity Generation by Source	35
Fig. 8: Average Prices for Liquefied Petroleum Gas in Kenya ('000 KSh per 13 Kg cylinder)	40
Fig. 9: Milk Intake in the Formal Sector	48
Fig. 10: Visitor Arrivals through J.K.I.A and M.I.A	50

KEY HIGHLIGHTS

OVERVIEW

The Monthly Leading Economic Indicators report highlights changes in Consumer Price Indices (CPI) and inflation, interest and exchange rates. In addition, the report presents changes in indicators of international trade, agriculture, energy, manufacturing, building and construction, tourism and transport.

MACROECONOMIC INDICATORS

Consumer Price Index (CPI) decreased from 205.90 points in April 2019 to 205.77 points in May 2019. The overall rate of inflation dropped from 6.58 per cent to 5.49 per cent during the same period. In May 2019, the Kenyan Shilling appreciated against the major trading currencies except the US Dollar, Japanese Yen and the Tanzanian Shilling. The average yield rate for the 91-day Treasury bills, which is a benchmark for the general trend of interest rates dropped from 7.39 per cent in April 2019 to 7.17 per cent in May 2019, and the inter-bank rate rose from 3.04 per cent to 5.61 per cent over the same period.

The Nairobi Securities Exchange (NSE) 20 share index decreased from 2,797 points in April 2019 to 2,677 points in May 2019, while the total number of shares traded increased from 295 million shares to 452 million shares during the same period. The total value of NSE shares traded increased from KSh 9.9 billion in April 2019 to 12.5 billion in May 2019.

Broad money supply (M3), a key indicator for monetary policy formulation, increased from KSh 3,404.39 million in April 2019 to 3,416.24 million in May 2019. On the other hand, the value of Gross Foreign Exchange Reserves increased from KSh 1,211.72 billion in April 2019 to KSh 1387.05 billion in May 2019 while the value of Net Foreign Exchange Reserves rose from KSh 746.09 billion in April 2019 to KSh 935.35 billion in May 2019.

AGRICULTURE



The quantity of coffee auctioned at the Nairobi Coffee Exchange was 4,084.0 in May 2019 while the average auction price stood at KSh 200.32 per kilogram over the same period. The quantity of produced tea increased from 26,131.30 MT in April 2019 to 37,758.64 MT in May 2019. The price of processed tea rose from KSh 228.05 in April 2019 per kilogram to Ksh 241.59 in May 2019.

The quantity of cane deliveries decreased from 358.62 thousand tonnes in April 2019 to 328.30 thousand tonnes in May 2019.

The quantity of cut-flower exports in May 2019 was 15,120.42 MT while its value of exports was KSh 9,355.87 million during the same period. The volume of vegetable exports increased from 5,149.66 MT in April 2019 to 5275.12 MT in May 2019. The value of vegetable exports decreased from KSh 2,171.14 million to 1810.50 million during the same period.

INTERNATIONAL TRADE

Volume of trade rose from KSh 199.26 billion in April 2019 to 201.34 billion in May 2019. The value of total exports decreased from KSh 48.81 billion in April 2019 to KSh 46.45 billion in May 2019 while the value of imports also increased from KSh 150.44 billion in April 2019 to KSh 154.89 billion in May 2019. Domestic exports by Broad Economic Category (BEC) indicated that food and beverages was the main export category in May 2019 accounting for 48.39 per cent of exports, while non-food industrial supplies accounted for 21.08 per cent of the total exports.

Quantity of coffee exported increased from 4551.54 MT in April 2019 to 5489.90 MT in May 2019 while its value rose from KSh 2,500.94 million to KSh 2699.61 million over the same period. The quantity of tea exported increased from 36,883.92 MT in April 2019 to 36,993.68 MT in May 2019. The value of exported tea increased from KSh 8,630.54 million to KSh 9,292.80 million over the same period.

Imports by BEC indicate that non-food industrial supplies was the main import category in May 2019 with a share of 31.9 per cent. Machinery & other capital equipment; fuel and lubricants; and transport equipment constituted 14.5, 22.7 and 10.3 per cent of the total value of imports, respectively. The share of foods and beverages Imports accounted for 10.6 per cent of the total imports.

ENERGY



Total local electricity generation increased from 921.20 million KWh in April 2019 to 952.39 million KWh in May 2019. In the international market, the price of Murban crude oil decreased from an average of US Dollars 73.05 per barrel in April 2019 to US Dollars 69.70 per barrel in May 2019.

The national average domestic retail oil prices of motor gasoline premium rose from KSh 107.57 per litre in April 2019 to KSh 112.79 in May 2019. The price of light diesel oil rose from KSh 103.09 in April 2019 to retail at KSh 105.23 in May 2019. On the other hand, the average price for Kerosene also rose from retail at KSh 102.49 in April 2019 to KSh 105.48 in May 2019. Charcoal prices averaged KSh 146.24 per 4KG tin in May 2019. The price of a 13-Kg cylinder of gas averaged KSh 2,193.17 in May 2019.

MANUFACTURING, BUILDING AND CONSTRUCTION



The quantity of cement produced decreased from 503,722 MT in April 2019 to 486,903 MT in May 2019. Consumption of cement dropped from 502,158 MT in April 2019 to 487,239 MT in May 2019. Sugar production increased from 34,521 Metric tonnes in April 2019 to 35,257 Metric tonnes in May 2019. Production of assembled vehicles increased from 567 units in April 2019 to

614 units in May 2019. Milk uptake in the formal sector dropped from 41.46 million litres in April 2019 to 40.99 million litres in May 2019.

ICT, TOURISM AND TRANSPORT



The total number of mobile money transactions was 154.24 million in January 2019 while their value stood at KSh 368.02 billion over the same period. The value of imports for telecommunication equipment rose from KSh 2,314.89 million in December 2018 to KSh 4,480.02 million in January 2019.

The total number of visitors arriving through Jomo Kenyatta (JKIA) and Moi International Airports (MIA) decreased from 197,613 persons in March 2019 to 25,132 persons in April 2019. The number of passengers who landed at Jomo Kenyatta International Airport (JKIA) decreased from 94,632 persons in March 2019 to 20,388 persons in April 2019, and passengers who embarked also decreased from 149,586 persons in April 2019 to 138,197 persons in May 2019. The total number of vehicles registered in December 2018 stood at 26,991 out of which 5,814 were Station Wagons.

Table 1(a): Kenya Consumer Price Indices
Kenya CPI: Base period February 2009=100

Group	Nairobi				Rest of Urban Areas	Kenya CPI
	Lower Income	Middle Income	Upper Income	Nairobi Combined		
2018						
January.....	191.45	159.79	156.07	182.48	187.57	185.47
February.....	194.37	160.71	157.31	184.85	190.20	188.00
March.....	198.16	161.43	157.56	187.76	192.62	190.62
April.....	200.32	161.79	157.57	189.41	195.82	193.18
May.....	202.10	163.00	157.92	191.00	197.89	195.05
June.....	200.15	162.99	159.61	189.66	195.88	193.31
July.....	197.39	162.48	159.58	187.54	194.43	191.59
August.....	195.70	164.10	163.82	186.87	195.90	192.18
September....	196.50	165.96	166.18	187.99	198.44	194.14
October.....	193.99	165.44	163.93	185.96	197.24	192.59
November.....	194.06	165.92	164.01	186.14	196.53	192.25
December.....	195.33	167.16	166.77	187.46	197.75	193.51
2019						
January.....	197.09	168.04	166.21	188.91	197.87	194.18
February.....	199.65	168.68	165.89	190.90	199.19	195.78
March.....	204.40	170.25	167.16	194.75	201.83	198.91
April.....	213.25	173.05	168.84	201.87	208.73	205.90
May.....	211.34	172.81	168.62	200.43	209.51	205.77

Notes

1. Nairobi Lower Income group - Households spending less than KSh 23,670 in October 2005
 2. Nairobi Middle Income Group- Households spending between KSh 23,671 to KSh 119,999 in October 2005
 3. Nairobi Upper Income Group - Households spending above KSh 120,000 in October 2005
- Rest of Urban areas includes Mombasa, Malindi, Machakos, Nyeri, Thika, Nakuru, Kisii, Kisumu, Eldoret, Nyahururu, Garissa and Bungoma.

Table 1(b): Kenya Inflation rate

Period	Inflation Rates						
	Nairobi				Rest of Urban Areas	Kenya CPI	
	Lower Income	Middle Income	Upper Income	Combined			
2018							
January.....	6.49	6.35	3.91	6.37	3.80	4.83	
February.....	5.75	5.77	4.18	5.70	3.62	4.46	
March.....	5.36	5.37	4.15	5.33	3.40	4.18	
April.....	4.36	4.19	4.14	4.32	3.33	3.73	
May.....	4.85	4.61	4.23	4.78	3.40	3.95	
June.....	5.52	5.64	5.75	5.55	3.43	4.28	
July.....	5.30	5.38	5.46	5.32	3.71	4.35	
August.....	3.60	5.77	7.76	4.19	3.94	4.04	
September.....	4.40	6.82	9.42	5.07	6.13	5.70	
October.....	3.07	6.02	7.15	3.82	6.69	5.53	
November.....	3.42	6.18	6.93	4.11	6.59	5.58	
December.....	3.50	6.17	7.86	4.21	6.73	5.71	
2019							
January.....	2.94	5.16	6.50	3.53	5.50	4.70	
February.....	2.72	4.96	5.46	3.27	4.73	4.14	
March.....	3.15	5.46	6.10	3.72	4.78	4.35	
April.....	6.45	6.96	7.16	6.58	6.59	6.58	
May.....	4.57	6.02	6.77	4.94	5.87	5.49	

Fig. 1: Inflation rates

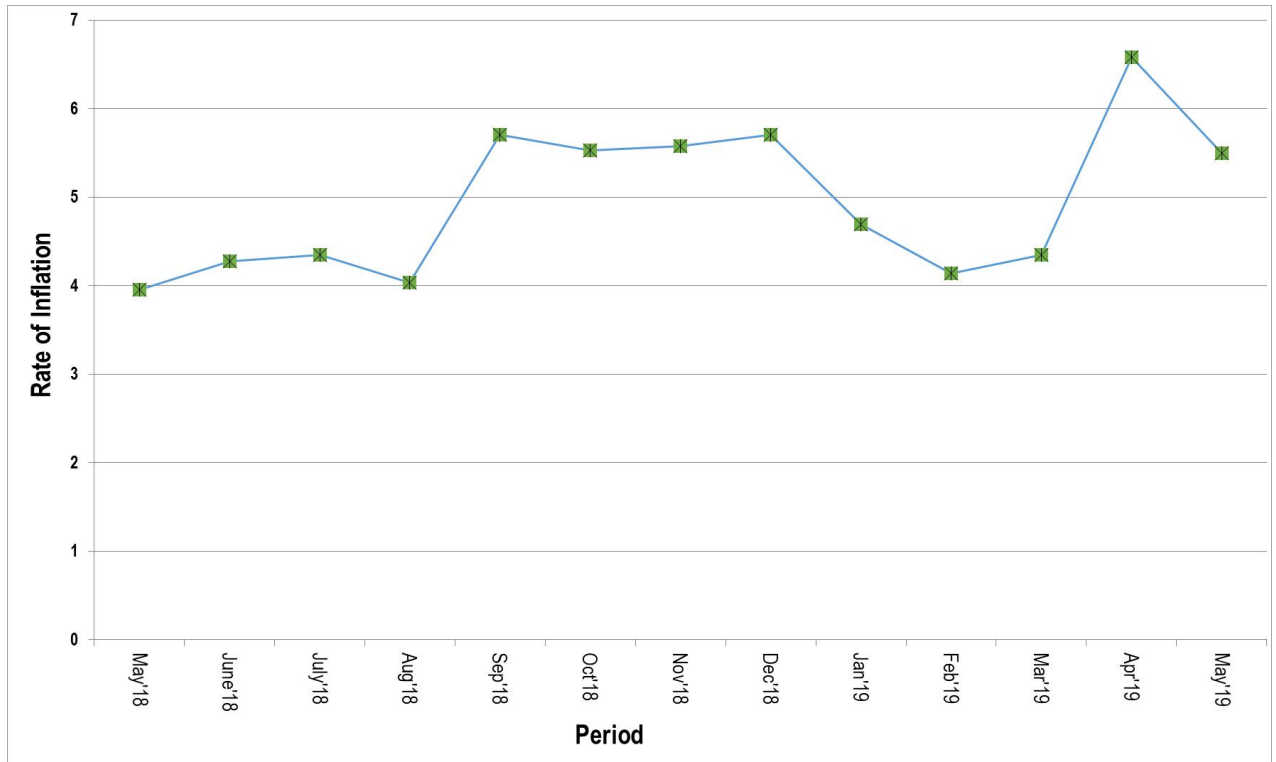


Table 2: Mean Foreign Exchange rates of Kenyan Shilling against Selected Major Currencies at the end of the Month

Year	2018								2019				
Currency	May	June	July	Aug	Sep	Oct	Nov	Dec	Jan	Feb	Mar	Apr	May
1 US Dollar.....	100.67	101.00	100.67	100.61	100.83	101.08	102.36	102.29	101.58	100.23	100.36	101.07	101.14
1 Pound Sterling.....	135.67	134.24	132.58	129.68	131.65	131.60	132.08	129.74	130.76	130.29	132.29	131.77	130.17
1 Euro.....	118.93	117.97	117.60	116.25	117.66	116.20	116.35	116.45	115.95	113.68	113.51	113.58	113.19
100 Japanese Yen.....	91.74	91.90	90.35	90.67	90.17	89.59	90.35	90.99	93.18	90.89	90.26	90.59	91.90
1 SA Rand.....	8.02	7.62	7.50	7.18	6.81	7.00	7.25	7.22	7.29	7.27	6.87	7.13	7.02
USHS/KES.....	37.00	38.05	37.41	37.06	37.70	37.40	36.54	36.38	36.45	36.64	36.92	36.97	37.22
TSHS/KES.....	22.67	22.54	22.61	22.71	22.67	22.66	22.46	22.49	22.72	23.23	23.36	22.88	22.75

Source: Central Bank of Kenya

Fig. 2: End of Month Mean Exchange rate of Kenya Shillings against Major Selected Currencies

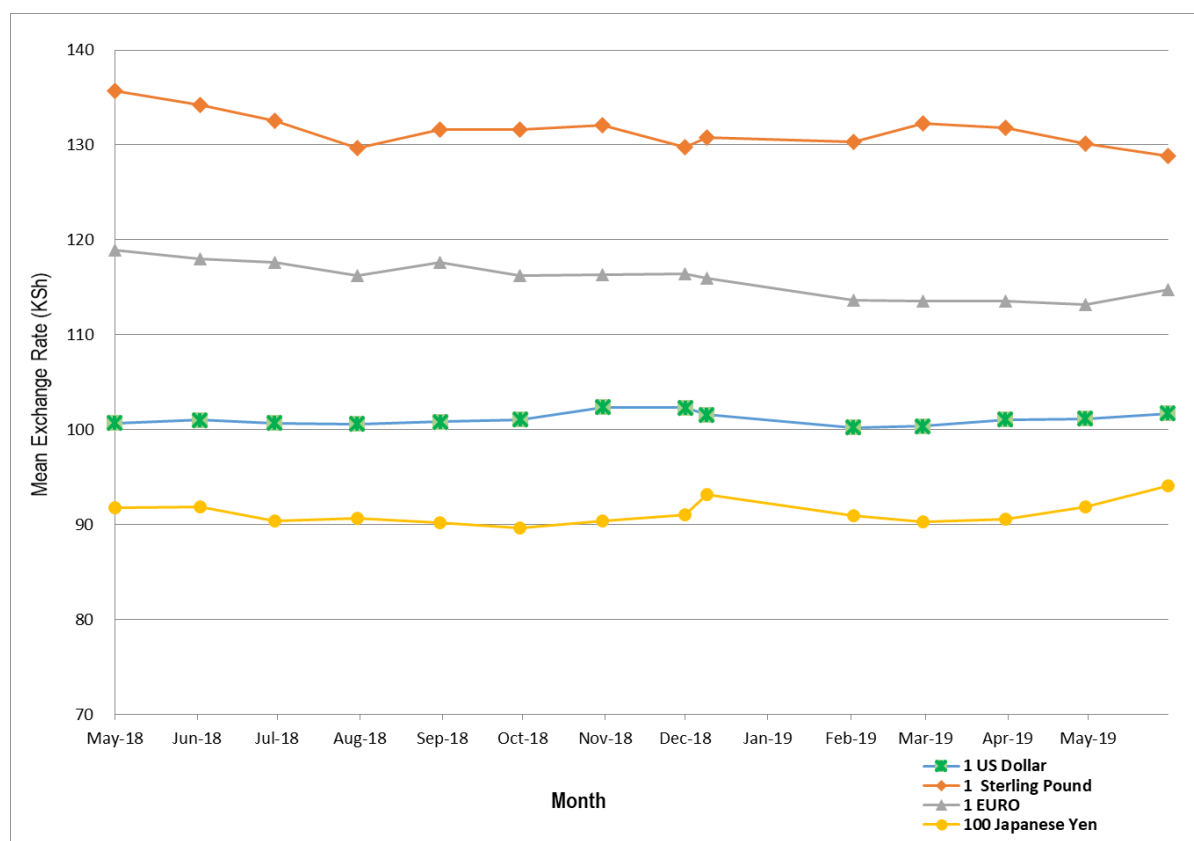


Table 3: Interest rate (%)

Month/Year	Average Yield Rates 91 – Days Treasury Bills	Central Bank Rate	Rates for Commercial Banks Loans and Advances (Weighted Average)	Overdraft Rates	Average Deposit Rate	Inter – Bank Rates	Savings (Commercial Banks Rates)
2018							
January	8.04	10.00	13.65	13.61	8.26	6.21	6.97
February	8.03	10.00	13.68	13.75	8.25	5.12	7.01
March	8.02	9.50	13.49	13.40	8.16	4.90	6.85
April	8.00	9.50	13.24	13.29	8.17	5.38	6.72
May	7.96	9.50	13.25	13.30	8.08	4.70	6.64
June	7.87	9.50	13.22	13.23	8.04	5.03	6.60
July	7.69	9.00	13.10	13.16	8.01	4.82	6.53
August	7.64	9.00	12.78	12.90	7.78	6.52	6.52
September	7.64	9.00	12.66	12.52	7.76	4.28	6.33
October	7.56	9.00	12.61	12.42	7.63	3.48	5.70
November	7.36	9.00	12.55	12.11	7.41	4.09	5.38
December	7.34	9.00	12.51	12.17	7.41	8.15	5.13
2019							
January	7.19	9.00	12.50	12.15	7.34	3.32	5.14
February	7.02	9.00	12.47	12.13	7.28	2.51	5.16
March	7.08	9.00				3.72	
April	7.39	9.00				3.04	
May	7.17	9.00				5.61	

Table 4: Nairobi Securities Exchange

Month	Number of Transactions	Number of Shares (Million)	Value of Shares (Million KSh)	NSE 20 Share Index
2018				
January.....	25,591	862	20,340	3,737
February.....	24,783	572	17,919	3,750
March.....	32,645	704	22,890	3,854
April.....	28,483	449	15,076	3,735
May.....	30,196	677	18,377	3,333
June.....	24,798	453	13,688	3,286
July.....	24,360	323	9,736	3,320
August.....	25,279	329	10,243	3,203
September.....	25,311	392	11,950	2,876
October.....	26,295	843	16,890	2,820
November.....	22,252	407	10,713	2,797
December.....	17,640	320	7,830	2,801
2019				
January.....	24,798	557	16,200	2,983
February.....	23,444	425	14,173	2,916
March.....	20,808	446	15,917	2,846
April.....	18,923	295	9,865	2,797
May.....	23,308	452	12,494	2,677

Source: Nairobi Securities Exchange Limited

Base Jan 1966=100

Fig. 3: Nairobi Securities Exchange 20 Share Index

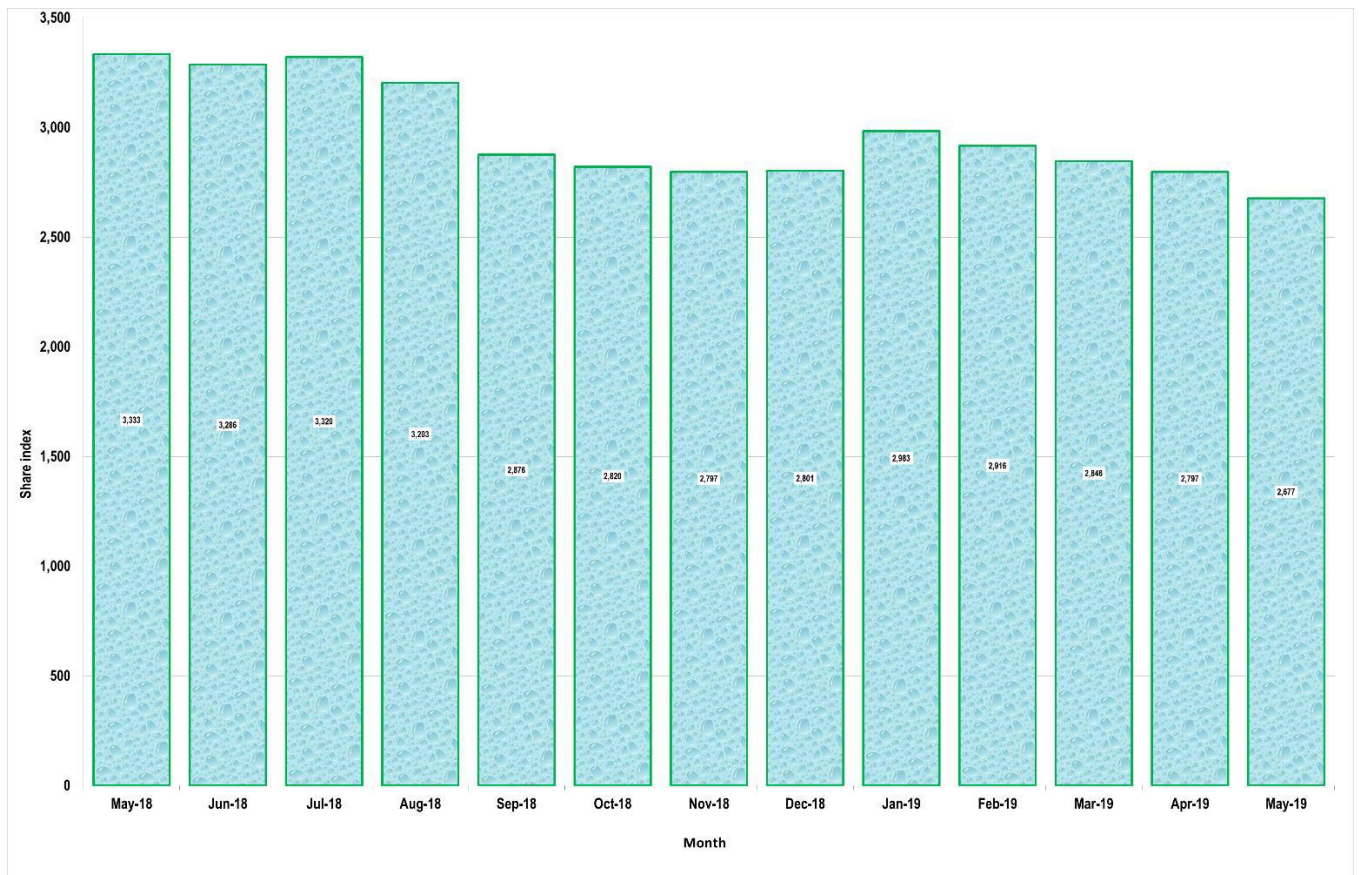


Table 5(a): Money Supply

KSh million

As at end of month	Money (M1)*	Quasi – Money banks & NBFIs	Total (M2)***	Foreign currency deposits ¹	Broad Money (M3)****	% Change
2018						
January	1,363,106	1,180,536	2,543,642	482,460	3,026,102	-0.15
February	1,383,959	1,177,326	2,561,286	462,231	3,023,516	-0.09
March	1,361,593	1,199,345	2,560,938	474,458	3,035,395	0.39
April	1,405,903	1,192,621	2,598,525	476,288	3,074,813	1.30
May	1,400,363	1,220,683	2,621,046	521,025	3,142,070	2.19
June	1,425,556	1,256,322	2,681,878	580,762	3,262,639	3.84
July	1,434,616	1,270,606	2,705,222	573,568	3,278,791	0.50
August	1,393,104	1,305,655	2,698,759	560,966	3,259,725	-0.58
September	1,379,544	1,305,377	2,684,921	576,160	3,261,081	0.04
October	1,436,428	1,283,358	2,719,786	553,218	3,273,004	0.37
November	1,409,609	1,289,822	2,699,431	569,611	3,269,041	-0.12
December	1,477,526	1,278,447	2,755,973	581,859	3,337,832	2.10
2019						
January	1,464,557	1,293,082	2,757,639	586,644	3,344,283	0.19
February	1,461,012	1,287,545	2,748,557	584,920	3,333,476	-0.32
March	1,520,263	1,318,146	2,838,409	576,915	3,415,324	2.46
April	1,501,685	1,323,773	2,825,458	578,930	3,404,388	-0.32
May	1,495,747	1,342,542	2,838,289	577,947	3,416,236	0.35

Source: Central Bank of Kenya

* Currency in circulation less cash in banks plus all demand deposits except those of National & County government, Banks, non-residents and foreign currency deposits

** All other deposits in commercial banks, except those of National government.

***Broad money (M2) is the sum of M1, Quasi money in Banks and Quasi money in NBFIs less NBFi Quasi Money Deposits in Banks

**** Broad Money (M3) includes M2 and Foreign currency deposits

M2=(M1+QM-NBFIs)

M3=M2+FCD

¹ Revised All 2014-2018 Numbers revised and available on request

Table 5(b): Gross Foreign Exchange Reserves

KSh Million*							
Month	Central Monetary Authority		Total	Foreign Assets		Gross Total	Net of Foreign Exchange Liabilities [^]
	Central Bank	National Government**		Commercial Banks	NBFI		
2018							
January	763,804	2,117	765,921	221,727	253	987,901	527,201
February	763,623	2,102	765,725	226,187	1,742	993,654	517,758
March	932,536	2,081	934,617	251,769	269	1,186,655	701,293
April	946,662	2,046	948,708	257,550	1,477	1,207,735	725,221
May	939,174	2,036	941,210	267,456	1,608	1,210,275	726,442
June	901,467	2,036	903,504	318,094	229	1,221,826	760,510
July	915,171	1,998	917,169	317,414	747	1,235,331	759,525
August	893,032	1,997	895,029	310,616	339	1,205,984	735,056
September	885,090	1,995	887,085	335,009	430	1,222,524	745,193
October	862,908	1,992	864,900	317,149	172	1,182,221	687,480
November	846,765	2,009	848,774	333,312	168	1,182,254	693,798
December	849,909	2,009	851,917	334,655	372	1,186,944	716,108
2019							
January	859,627	2,001	861,629	317,362	226	1,179,217	708,650
February	855,490	1,981	857,471	316,684	571	1,174,726	713,045
March	857,149	1,982	859,130	333,816	146	1,193,092	721,965
April	848,279	1,989	850,268	361,257	193	1,211,717	746,093
May	1,055,911	1,975	1,057,886	329,037	122	1,387,045	935,354

Source: Central Bank of Kenya

* Includes encumbered reserves

**National Government includes reserve position in the Fund and deposits with Crown Agents.

[^] Revised

Table 6: Coffee Sales and Prices*

Month	2018			2019***		
	QUANTITY (MT)	PRICE (\$ /kg)	PRICE (Ksh /kg)	QUANTITY (MT)	PRICE (\$ /kg)	PRICE (Ksh /kg)
January.....	5,111.90	5.13	527.24	4,166.77	4.46	452.57
February.....	5,832.22	5.69	577.36	5,723.84	4.49	449.47
March.....	4,913.15	4.73	478.14	4,057.03	2.97	298.47
April.....	4,194.24	3.03	304.59	5,307.40	2.01	203.37
May.....	4,619.51	2.15	216.55	4,084.00	1.98	200.32
June**.....	-	-	-			
July.....	1,221.20	3.54	356.73			
August.....	2,234.56	3.35	337.30			
September.....	2,299.09	2.86	288.68			
October.....	2,493.24	3.17	320.55			
November.....	2,334.41	3.60	368.16			
December.....	1,577.04	3.95	403.58			
Annual.....	36,830.56	3.43	348.24	4,667.81	3.18	320.84

Source: Coffee Directorate

* Auction Price

NB: MT denotes Metric Tonnes

*** Provisional

** Nairobi Coffee Exchange was in recess for most of June 2018

Fig. 4: Coffee Sales at the Nairobi Coffee Exchange

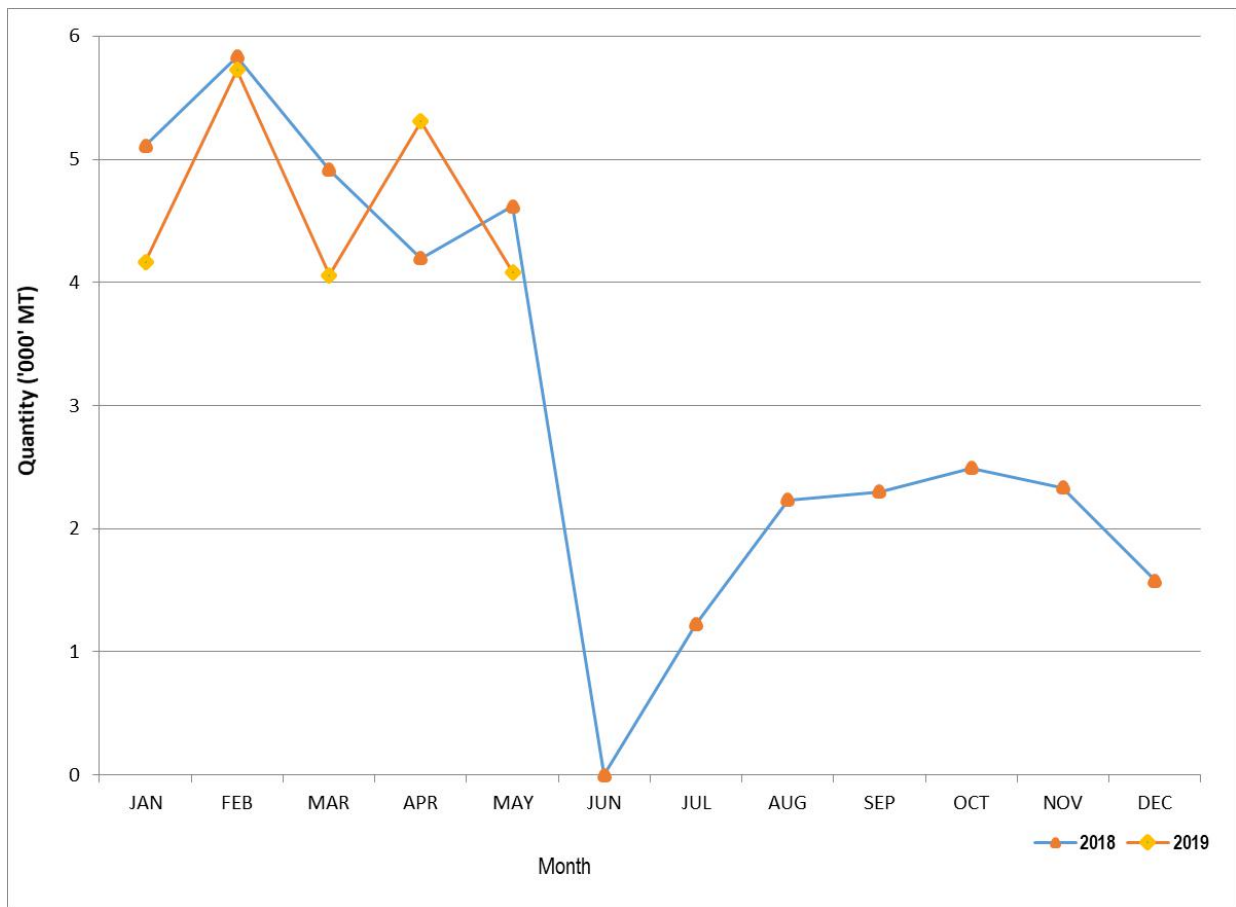


Table 7: Tea Production and Auction Prices

Months	2018			2019*		
	QUANTITY (MT)	PRICE (\$/Kg)	PRICE (KSh/Kg)	QUANTITY (MT)	PRICE (\$/Kg)	PRICE (KSh/Kg)
January	40,834.42	2.96	304.42	48,386.47	2.30	233.94
February	27,939.13	2.98	302.28	31,445.08	2.16	216.03
March	30,986.83	2.81	283.89	26,461.70	2.13	214.01
April	44,579.88	2.67	268.15	26,131.30	2.26	228.05
May	43,355.79	2.61	262.95	37,758.64	2.39	241.59
June	43,299.06	2.55	257.40			
July	35,278.16	2.49	250.84			
August	37,432.60	2.40	241.20			
September	42,530.86	2.41	243.34			
October	49,283.64	2.42	244.21			
November	45,648.57	2.36	241.52			
December	51,829.79	2.30	235.55			
Annual	492,998.72	2.58	261.31	170,183.19	11.24	1,133.62

Source: Tea Directorate

MT denotes Metric Tonnes

*Provisional

Fig. 5: Tea Production

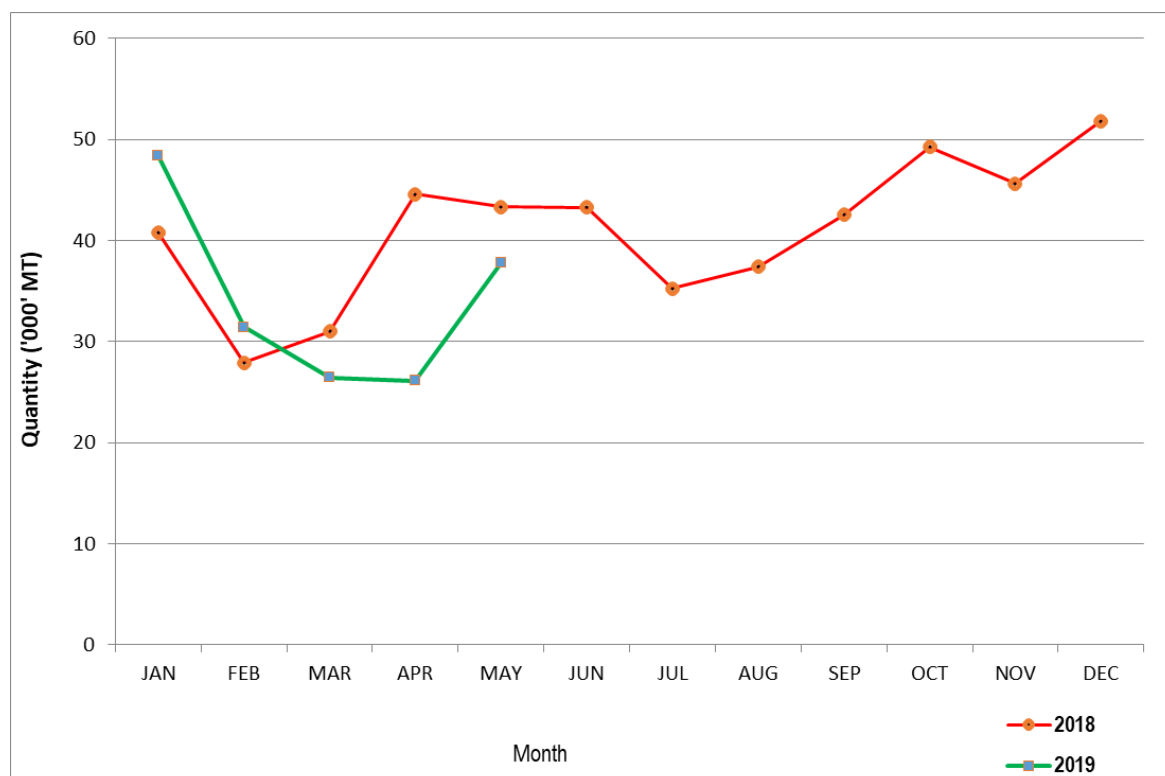


Table 8: Cane Deliveries

000 Metric Tonnes					
Month	2015	2016	2017	2018	2019*
January.....	647.34	670.46	581.60	687.52	534.26
February.....	585.21	640.51	519.40	555.88	455.87
March.....	645.07	757.06	470.73	445.17	453.15
April.....	521.26	576.69	304.79	330.57	358.62
May.....	529.33	514.66	231.97	283.90	328.30
June.....	544.01	629.67	248.94	312.09	
July.....	558.98	609.30	244.69	377.37	
August.....	585.74	564.44	173.26	440.10	
September.....	619.35	568.36	290.70	434.91	
October.....	550.81	568.83	452.81	497.93	
November.....	496.55	540.69	571.21	475.53	
December.....	565.57	520.17	521.65	418.89	
Total.....	6,849.22	7,160.84	4,611.75	5,259.85	

Source : Sugar Directorate

* Provisional

Fig. 6: Cane Deliveries

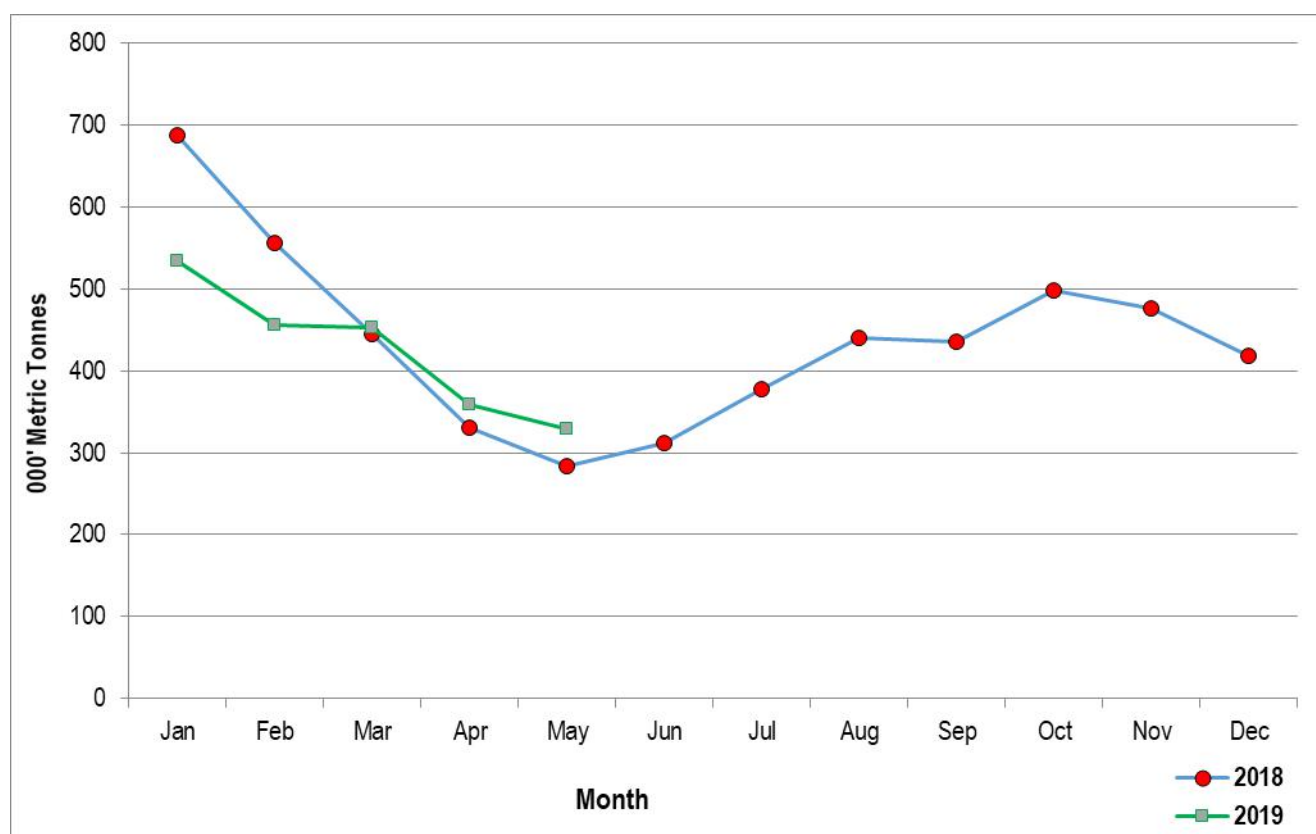


Table 9(a): Average Monthly Retail Prices for Dry Maize, 2018 (per Kg)

Month/Town	Jan	Feb	Mar	Apr	May	June	July	Aug	Sep	Oct	Nov	Dec
Akala.....	36.57	-	-	-	-	-	-	34.31	34.53	33.61	39.22	38.84
Bomet.....	34.50	32.00	32.00	31.00	27.60	31.00	32.00	28.00	28.50	25.60	26.00	-
Bondo.....	32.22	29.54	27.81	27.18	29.68	29.62	27.92	-	-	-	-	-
Bumala.....	-	-	-	-	40.48	31.24	-	-	-	-	-	-
Bungoma Town.....	-	-	-	-	-	-	28.01	22.07	-	-	-	-
Bura Tana.....	39.00	36.25	40.00	50.00	48.33	50.00	46.67	50.00	-	-	-	-
Burua.....	54.55	54.55	60.00	60.00	54.55	54.55	54.55	-	-	-	-	-
Burn Forest.....	28.00	28.00	28.00	35.00	47.22	35.00	35.00	30.63	-	25.00	25.00	21.25
Busia Town.....	-	-	-	-	31.82	30.77	-	-	-	-	-	-
Butere.....	29.17	29.17	30.00	29.50	23.60	24.00	22.71	-	-	-	-	-
Chepsionoi.....	32.40	29.04	30.79	31.69	31.03	31.20	25.68	23.35	23.08	-	21.80	22.53
Cheptula.....	33.73	33.33	33.33	33.33	30.95	29.76	26.98	23.81	-	23.81	23.81	24.60
Daraja Mbili.....	-	29.09	31.17	-	-	-	-	28.83	-	23.81	25.30	24.93
Eldoret.....	-	30.50	32.00	38.93	41.89	40.00	40.00	35.63	-	25.00	25.00	25.00
Embu Town.....	40.00	40.91	40.91	36.36	31.82	32.99	30.50	-	24.71	23.34	22.73	26.14
Endebess.....	25.00	25.00	25.00	25.00	-	-	-	-	-	-	-	-
Engare.....	-	-	-	-	-	32.00	38.00	-	16.00	17.60	19.00	17.00
Gakoromere.....	38.89	37.41	38.20	36.42	32.59	33.33	33.33	27.78	-	27.78	31.94	33.33
Garissa Town.....	-	-	-	-	-	50.00	55.71	60.00	60.00	50.00	50.00	50.00
Gatundu.....	-	-	-	50.00	50.00	50.00	44.58	43.13	-	-	-	-
Gikomba.....	52.38	55.00	60.00	60.00	57.14	57.14	57.14	-	-	-	-	-
Githurai.....	-	-	-	55.00	54.00	55.00	53.33	51.25	-	-	-	-
Harambee.....	-	-	-	-	-	-	-	-	-	19.05	-	-
Hola.....	38.75	36.25	36.67	50.00	50.00	50.00	50.00	50.00	-	-	-	-
Homabay.....	-	-	-	-	-	-	27.57	21.74	-	-	-	-
Iciara.....	-	-	-	-	-	-	-	-	18.47	17.17	21.40	26.19
Isiolo Town.....	-	-	-	50.00	50.00	-	-	46.75	48.50	39.00	33.33	32.50
Iten.....	-	35.00	33.33	31.88	28.73	38.06	27.24	33.33	-	20.28	18.73	15.63
Kabarnet.....	33.33	38.89	-	44.44	44.44	41.67	38.89	38.89	-	-	-	-
Kajiado.....	-	50.00	45.00	50.00	50.00	46.00	43.64	50.00	50.00	-	40.00	46.00
Kakamega.....	35.00	35.00	35.00	37.50	36.00	33.73	27.50	-	-	-	-	-
Kalundu.....	42.50	35.00	35.00	35.00	30.00	30.00	30.00	30.00	32.50	-	26.67	26.67
Kandara.....	-	-	-	-	-	-	-	-	-	40.00	-	-
Kangemi.....	52.50	60.00	60.00	57.14	52.38	52.38	52.38	-	-	-	-	-
Kapsabet.....	31.53	30.79	30.49	31.08	30.64	30.41	24.44	23.39	21.43	-	20.65	22.27
Karatina.....	44.72	39.83	38.10	38.14	42.47	41.98	40.95	42.37	-	30.81	21.76	15.45
Kawangware.....	50.00	52.50	52.50	55.00	55.00	55.00	55.00	-	-	-	-	-
Kegonga.....	23.46	24.64	25.00	28.26	27.54	26.09	27.42	26.09	-	22.83	-	22.28
Kehacha.....	28.26	26.63	25.00	29.13	27.17	26.09	29.45	24.77	-	23.91	22.83	21.74
Kerugoya.....	45.54	42.63	40.95	40.26	36.26	32.27	31.82	30.95	29.52	25.11	33.18	33.37
Kiambu.....	-	-	-	45.00	45.00	43.75	45.00	43.75	-	-	-	-
Kianjai.....	-	38.34	33.61	36.11	36.67	27.78	27.78	24.44	-	27.78	27.78	-
Kibirigo.....	-	-	-	-	31.82	-	-	29.36	-	-	23.91	-
Kiboswa.....	39.13	-	-	-	-	-	-	-	-	-	-	-
Kilgoris.....	-	-	-	23.00	20.40	21.33	24.00	-	21.00	20.00	17.00	26.00
Kimulot.....	32.00	32.00	32.00	28.00	28.00	-	28.00	28.00	24.00	24.00	25.00	-
Kipkaren.....	-	28.00	28.00	34.22	42.56	35.00	34.58	30.63	-	25.00	25.00	21.25
Kiriaini.....	-	-	-	-	35.00	35.00	33.75	26.25	25.00	25.00	28.75	30.00
Kiriiri.....	-	-	-	-	-	-	-	-	25.72	22.77	25.15	27.77
Kitale.....	29.17	29.17	29.17	29.17	28.94	26.39	27.08	24.40	-	37.60	-	-
Kongowea.....	41.25	42.50	41.25	40.00	40.00	-	-	-	32.50	34.00	31.25	35.00
Korokocho.....	52.38	52.38	57.14	60.00	60.00	60.00	60.00	-	-	-	-	-
Kutus.....	37.27	37.50	36.17	35.83	37.23	31.16	31.82	32.72	31.49	31.13	33.75	33.75
Kwale.....	48.75	50.00	51.40	55.00	54.75	55.00	45.00	40.00	-	40.00	40.00	46.50
Limuru.....	-	-	-	41.67	43.33	45.00	45.00	45.00	-	-	-	-
Lodwar.....	63.75	61.21	61.91	60.00	56.90	-	-	-	-	-	-	-
Machakos Town.....	-	40.00	40.00	40.00	40.00	38.33	40.00	37.50	40.00	35.00	30.00	30.00
Majengo.....	53.33	51.67	46.25	45.00	42.00	-	-	-	41.25	32.00	40.00	40.00
Makuyu.....	-	-	-	40.00	36.25	35.00	34.38	32.50	27.50	-	29.15	25.00
Marsabit Town.....	38.19	39.25	41.20	40.00	40.00	40.00	40.00	40.00	40.00	40.00	40.00	35.00
Mbale.....	38.10	38.10	33.33	33.33	33.33	30.95	26.98	23.81	-	21.43	21.43	23.81
Migori.....	30.43	28.57	26.36	30.43	28.69	28.26	29.13	23.14	-	22.17	21.74	23.37
Mulot.....	30.00	28.00	31.00	32.00	28.00	26.00	26.00	23.00	22.50	23.60	24.00	24.00
Mumias.....	29.17	29.69	31.77	32.29	27.03	28.00	23.44	-	-	-	-	-
Mundata.....	-	-	-	29.76	28.97	28.57	26.98	23.81	-	23.02	24.29	23.81
Muthithi.....	-	-	-	-	35.00	33.75	32.50	30.00	22.50	-	26.25	30.00
Muthurwa.....	40.67	39.07	37.56	52.50	55.00	55.00	55.00	-	-	-	-	-
Muthurwa Narok.....	-	-	-	40.00	33.20	32.00	36.67	-	-	40.80	40.00	16.00
Mwembe Tayari.....	51.25	51.25	46.25	45.00	41.00	-	-	-	40.00	36.00	50.00	50.00
Nakuru Town.....	50.00	55.00	53.75	61.78	64.45	62.97	32.10	27.78	27.78	-	22.22	33.33
Nanyuki.....	-	44.12	52.57	40.70	58.94	44.12	41.77	38.36	-	39.00	34.01	33.26
Ndaragwa.....	-	54.41	-	-	-	-	-	-	-	-	-	-
Ngiya.....	32.21	30.45	-	27.27	28.40	29.17	27.53	34.20	33.99	34.02	38.46	38.85
Ndondori.....	-	-	-	40.00	-	-	-	-	-	-	-	-
Nyabite.....	-	-	-	-	30.43	-	29.38	26.09	-	-	22.92	-
Nyahururu.....	-	60.99	52.72	44.44	64.89	55.65	49.92	27.78	-	-	-	27.72
Nyeri.....	50.00	50.00	47.50	42.37	42.86	40.48	42.86	40.97	-	27.92	22.67	15.93
Oi Kalou.....	-	59.05	60.00	50.00	50.00	50.00	50.00	50.00	-	50.00	35.00	41.67
Oyugis.....	-	-	-	-	-	-	25.00	-	-	-	-	-
Riochanda.....	-	-	-	-	25.00	-	24.78	20.58	-	-	23.91	-
Runyenjes.....	38.96	38.07	36.36	31.82	29.55	27.70	27.19	-	25.00	19.54	21.86	22.73
Sagana.....	40.53	42.57	43.03	38.24	38.22	35.00	-	35.58	32.46	26.02	33.56	34.17
Sega.....	53.00	51.25	45.00	45.00	40.00	-	-	-	42.50	34.00	37.50	36.25
Siakago.....	41.82	43.18	43.18	37.88	37.66	31.82	27.92	-	25.03	22.76	23.27	26.45
Siaya.....	37.70	35.67	33.27	-	-	35.90	30.30	-	33.99	33.83	38.26	38.85
Sibanga.....	27.08	27.08	29.17	29.17	-	-	-	-	-	-	-	-
Soko Mjinga.....	-	-	-	30.43	27.18	-	26.09	21.74	21.74	-	-	-
Sotik.....	36.00	32.00	32.00	33.00	30.40	28.00	29.60	30.00	25.00	24.00	24.00	24.00
Tala.....	-	35.00	-	35.00	30.00	30.00	31.00	30.00	30.00	32.50	31.25	30.00
Thika.....	38.00	45.00	-	48.33	45.00	47.50	46.67	45.00	-	-	-	-
Toi.....	52.50	52.50	60.00	60.00	57.14	57.14	57.14	-	-	-	-	-
Turbo.....	28.00	28.00	28.00	35.00	41.67	35.00	35.00	30.00	-	25.00	25.00	21.25
Turkana.....	83.33	62.70	69.64	60.00	-	51.39	70.31	-	-	-	40.00	50.00
Ukunda.....	50.00	50.00	55.00	50.00	53.60	55.00	48.33	40.00	-	41.00	42.50	43.00
Unguja.....	31.99	29.22	30.36	25.95	-	30.52	28.60	-	34.62	34.10	37.72	39.25
Voi.....	-	-	-	-	-	-	30.00	-	-	-	-	-
Wajir Town.....	-	-	-	-	-	-	-	90.00	-	-	-	-
Wote.....	-	-	-	30.00	-	28.00	28.00	28.86	28.00	-	27.00	28.50
Total.....	40.14	40.00	40.04	40.29	39.71	38.49	36.37	34.29	30.83	29.21	29.23	29.86

-Data not Available

Table 9(b): Average Monthly Retail Prices for Dry Maize, 2019 (per Kg)

Month/Town	Jan	Feb	Mar
Akala.....	-	-	-
Bomet.....	30.50	32.00	32.00
Bondo.....	31.84	-	-
Bumala.....	-	-	-
Bungoma Town..	-	-	-
Bura Tana.....	-	50.00	-
Burma.....	-	50.00	-
Burn Forest.....	20.00	21.43	25.00
Busia Town.....	-	-	-
Butere.....	-	-	-
Chepsonoi.....	23.12	22.77	23.54
Cheptula.....	25.00	27.38	28.57
Daraja Mbili.....	27.92	26.96	25.57
Eldoret.....	25.00	27.00	30.00
Embu Town	27.27	25.00	22.73
Endebess.....	-	-	-
Engare.....	-	-	-
Gakoromere.....	33.33	33.33	33.33
Garissa Town....	60.00	60.00	50.00
Gatundu.....	33.75	40.00	22.50
Gikomba.....	-	-	-
Githurai.....	46.67	45.00	40.00
Harambee.....	-	-	-
Hola.....	-	50.00	-
Homabay	-	-	-
Iciara	22.24	22.74	22.73
Isiolo Town.....	30.00	30.00	31.67
Iten.....	25.00	25.00	26.11
Kabarnet.....	-	30.00	33.33
Kajiado	44.00	49.17	50.00
Kakamega.....	-	-	-
Kalundu.....	25.00	25.00	24.50
Kandara.....	-	-	-
Kangemi	-	-	-
Kapsabet.....	22.74	23.79	24.43
Karatina.....	26.24	-	-
Kawangware.....	-	-	-
Kegonga.....	21.74	21.74	-
Kehacha.....	23.19	21.96	22.46
Kerugoya.....	32.73	31.85	32.58
Kiambu.....	45.00	45.00	43.33
Kianjai.....	31.48	24.60	23.61
Kibirigo.....	25.00	26.09	26.09
Kiboswa.....	-	-	-
Kilgoris	-	-	-

Table 9(b) Continued: Average Monthly Retail Prices for Dry Maize, 2019 (per Kg)

Month/Town	Jan	Feb	Mar
Kimulot.....	24.00	25.00	28.00
Kipkaren.....	20.00	22.50	25.00
Kiriaini.....	-	30.00	30.00
Kiritiri.....	27.92	25.84	27.14
Kitale.....	20.83	26.56	25.00
Kongowea.....	-	-	-
Korokocho.....	-	-	-
Kutus.....	30.88	32.76	28.21
Kwale.....	46.00	46.25	40.00
Limuru.....	40.00	-	45.00
Lodwar.....	-	-	-
Machakos Town.	30.00	30.00	30.00
Majengo.....	-	-	-
Makuyu.....	25.00	30.00	30.00
Marsabit Town ...	-	-	-
Mbale.....	23.81	25.00	30.65
Migori.....	35.60	21.74	22.17
Mulot.....	26.00	23.00	20.00
Mumias.....	-	-	-
Mundeta.....	23.81	23.81	23.81
Muthithi.....	30.00	28.75	30.00
Muthurwa.....	-	-	-
Muthurwa Narok.	-	-	-
Mwembe Tayari..	-	-	-
Nakuru Town	27.78	27.78	34.73
Nanyuki.....	33.07	33.34	32.92
Ndaragwa.....	-	-	-
Ngija.....	42.46	-	-
Ndondori.....	-	-	-
Nyabite.....	25.00	26.09	26.09
Nyahururu.....	27.78	27.78	32.43
Nyeri.....	24.05	23.22	23.15
Oi Kalou.....	35.00	37.50	45.00
Oyugis.....	-	-	-
Riochanda.....	20.83	21.74	-
Runyenjes.....	22.73	23.87	20.45
Sagana.....	29.55	35.12	-
Sega.....	-	-	-
Siakago.....	23.27	23.02	24.00
Siaya.....	35.12	-	-
Sibanga.....	-	-	-
Soko Mjinga.....	26.09	27.27	-
Sotik.....	24.00	25.00	28.00
Tala.....	30.00	35.00	35.00
Thika.....	44.29	31.25	35.83
Toi.....	25.00	25.00	-
Turbo.....	20.00	21.00	23.75
Turkana.....	50.00	50.00	-
Ukunda.....	48.75	46.60	47.50
Unguja.....	34.29	-	-
Voi.....	25.00	25.00	-
Wajir Town.....	-	-	-
Wote.....	28.00	28.00	27.43
Total	31.35	29.96	30.35

-Data not Available

Table 9(C): Average Monthly Retail Prices for Dry Beans, 2018 (per Kg)

Month/Town	Jan	Feb	Mar	Apr	May	Jun	Jul	Aug	Sep	Oct	Nov	Dec
Akala.....	80.98	-	-	-	-	-	-	71.34	74.91	72.21	81.19	81.45
Bomet.....	71.16	66.66	78.85	70.94	70.77	77.78	73.08	71.15	69.93	64.62	69.23	-
Bondo.....	100.28	100.22	93.41	95.03	99.28	70.74	90.91	-	-	-	-	-
Bumala.....	-	-	-	-	69.05	73.02	-	-	-	-	-	-
Bungoma Town.....	-	-	-	-	-	-	73.00	88.21	-	-	-	-
Bura Tana.....	100.00	100.00	100.00	100.00	100.00	100.00	100.00	100.00	100.00	100.00	-	-
Burma.....	104.76	104.76	105.00	105.00	100.00	100.00	100.00	-	-	-	-	-
Burn Forest.....	90.00	90.00	105.00	113.46	114.40	90.00	88.33	85.00	83.75	80.00	-	-
Busia Town.....	-	-	-	-	80.95	76.98	-	-	-	-	-	-
Butere.....	100.00	88.64	102.28	113.64	68.18	73.63	75.00	-	-	-	-	-
Chepsonoi.....	-	-	-	-	81.55	79.08	78.11	79.19	82.61	-	82.66	89.59
Cheptula.....	73.97	79.22	81.82	84.09	77.27	77.27	72.73	69.32	72.73	70.91	68.18	68.18
Daraja Mbili.....	-	57.57	80.94	-	-	-	-	63.70	62.94	-	60.03	63.02
Eldoret.....	-	95.46	102.50	119.00	112.73	100.00	93.33	90.00	85.00	85.00	88.75	90.00
Embu Town.....	67.50	65.63	70.84	65.28	60.51	65.28	58.64	58.35	56.25	61.24	59.09	59.09
Endebess.....	75.00	80.56	62.50	62.50	-	-	-	-	-	-	-	-
Engare.....	-	-	-	70.00	51.20	56.00	53.33	59.00	56.00	65.60	70.00	72.00
Gakoromere.....	88.89	79.17	76.39	75.31	77.78	55.56	55.56	55.56	55.56	55.56	63.89	66.67
Garissa Town.....	-	-	-	-	-	113.33	98.10	86.67	86.67	87.67	81.67	81.67
Garsen.....	80.00	80.00	80.00	80.00	80.00	80.00	80.00	80.00	80.00	80.00	80.00	80.00
Gatundu.....	-	-	-	96.11	100.00	99.17	97.22	93.33	100.00	51.67	-	-
Gikomba.....	95.24	100.00	110.00	110.00	104.76	104.76	104.76	-	-	-	-	-
Githurai.....	-	-	-	81.61	84.05	82.77	82.94	87.92	87.50	51.67	-	-
Harambee.....	-	-	-	-	-	-	-	-	-	81.82	-	-
Hola.....	100.00	100.00	100.00	100.00	100.00	100.00	100.00	100.00	100.00	100.00	-	-
Homabay.....	-	-	-	-	-	-	60.15	60.10	-	65.38	-	-
Iciara.....	-	-	-	-	-	-	-	-	48.11	56.33	59.64	61.37
Isiolo Town.....	-	-	-	80.00	80.00	-	-	59.34	80.27	80.00	81.67	85.00
Iten.....	-	95.46	93.86	94.26	94.98	96.16	75.24	-	-	75.00	68.83	53.13
Kabarnet.....	77.78	88.89	-	-	100.00	88.89	87.50	-	-	-	-	-
Kajado.....	-	110.00	110.00	120.00	120.00	114.00	115.29	120.00	120.00	-	110.00	97.00
Kakamega.....	116.37	113.64	113.64	107.96	109.09	90.91	84.09	-	-	-	-	-
Kalundu.....	82.86	82.50	83.33	70.00	100.00	100.00	70.00	70.00	72.50	-	67.14	70.00
Kandara.....	-	-	-	-	-	-	-	-	-	60.00	-	-
Kangemi.....	105.00	104.76	104.76	110.00	105.00	105.00	105.00	-	-	-	-	-
Kapsabet.....	78.16	82.97	83.41	86.05	92.61	81.96	78.89	80.53	83.33	-	89.02	77.45
Karatna.....	105.24	106.07	104.71	122.73	100.25	103.29	102.02	-	-	87.47	84.34	80.62
Kawangware.....	100.00	95.24	95.24	104.55	104.55	104.55	104.55	-	-	-	-	-
Kegongga.....	77.00	93.92	88.00	84.62	97.33	96.00	100.60	-	-	80.77	-	94.00
Kehacha.....	74.67	81.50	78.00	93.00	90.00	98.18	97.00	-	-	77.64	78.00	80.00
Kerugoya.....	64.52	62.64	60.93	-	63.09	63.86	65.22	51.36	52.49	62.62	72.36	72.36
Kiambu.....	-	-	-	71.79	66.93	69.23	75.29	79.17	-	-	-	-
Kianjai.....	-	68.75	69.45	75.00	81.11	58.34	55.56	55.56	-	57.41	50.00	-
Kibingo.....	-	-	-	-	76.09	-	86.21	-	-	-	77.27	-
Kiboswa.....	70.83	-	-	-	-	-	-	-	-	-	-	-
Kilgoris.....	-	-	-	76.00	80.80	82.67	80.00	73.00	95.00	60.80	26.00	97.00
Kimulot.....	72.00	72.00	72.00	80.00	81.14	80.00	63.20	65.50	64.80	63.20	65.08	-
Kipkaren.....	-	90.00	100.00	113.33	116.11	90.00	86.67	81.67	-	80.00	80.00	80.00
Kiriaini.....	-	-	-	-	75.00	73.33	70.00	70.00	72.50	76.92	76.98	72.50
Kiritiri.....	-	-	-	-	-	-	-	-	57.32	73.93	68.44	70.25
Kitale.....	83.33	83.33	83.33	83.33	78.97	66.67	66.67	63.89	-	-	-	-
Kongowea.....	87.50	87.50	87.50	80.00	80.00	80.00	-	63.75	60.00	52.00	60.00	60.00
Korokochu.....	104.76	104.76	100.00	105.00	105.00	105.00	105.00	-	-	-	-	-
Kutus.....	68.15	66.31	68.48	-	65.22	65.22	65.22	66.70	67.48	70.84	69.81	71.96
Kwale.....	95.00	100.00	100.00	100.00	90.00	100.00	85.00	60.00	-	80.00	80.00	82.50
Limuru.....	-	-	-	86.51	72.76	68.90	76.17	80.00	-	-	-	-
Lodwar.....	73.01	84.95	79.17	100.00	67.13	72.92	-	-	-	-	-	-
Machakos Town.....	-	80.00	80.00	80.00	80.00	78.33	80.00	80.00	80.00	80.00	77.50	70.00
Mackinon.....	116.00	120.00	120.00	120.00	120.00	-	-	100.00	95.00	100.00	100.00	100.00
Majengo.....	102.50	97.50	77.50	80.00	86.00	90.00	-	80.00	80.00	80.00	75.00	70.00
Makuyu.....	-	-	-	75.00	70.00	75.00	73.75	69.17	70.00	-	75.99	65.00
Marsabit Town.....	80.00	90.00	94.58	100.00	100.00	100.00	92.73	82.50	80.00	80.00	80.00	70.00
Mbale.....	90.91	86.36	90.91	-	81.82	84.09	90.91	-	-	77.27	81.82	81.82
Migori.....	80.00	83.00	80.50	96.00	96.80	94.50	102.00	-	-	82.68	76.00	74.27
Mulot.....	65.38	63.64	75.00	67.31	69.87	63.67	66.48	58.33	58.65	63.33	64.74	64.10
Mumias.....	116.36	109.10	78.41	84.09	90.91	90.91	78.41	-	-	-	-	-
Mundela.....	-	-	-	77.27	69.70	68.18	74.24	-	-	74.25	73.64	75.00
Muthithi.....	-	-	-	-	70.00	70.00	72.50	72.50	67.50	-	70.59	75.00
Muthurwa.....	81.33	84.56	80.97	104.76	110.00	110.00	110.00	-	-	-	-	-
Muthurwa Narok.....	-	-	-	-	92.80	96.00	97.33	98.00	-	104.80	112.00	100.00
Mwembe Tayari.....	102.50	85.00	77.50	80.00	94.00	80.00	-	80.00	77.50	84.00	90.00	78.33
Nakuru Town.....	68.89	71.25	70.00	63.75	82.94	76.11	63.58	52.13	55.19	-	51.85	57.04
Nanyuki.....	-	115.54	110.09	110.21	102.25	113.22	89.80	97.56	-	83.34	88.28	79.68
Ndaragwa.....	-	100.00	-	-	-	-	-	-	-	-	-	-
Ndondori.....	-	-	-	75.00	-	-	-	-	-	-	-	-
Ngija.....	101.36	93.75	100.10	96.33	72.92	79.38	105.49	68.81	73.75	73.75	80.37	83.51
Nyabite.....	-	-	-	-	89.39	-	69.26	57.89	-	-	77.27	-
Nyahururu.....	-	110.91	111.12	110.96	111.29	110.85	111.32	80.56	-	-	-	77.61
Nyeri.....	99.41	95.98	93.22	89.92	99.61	90.48	89.33	-	-	81.05	78.32	83.43
Ol Kalou.....	-	100.00	100.00	100.00	100.00	84.44	96.30	100.00	-	100.00	90.00	95.00
Oyugis.....	-	-	-	-	-	-	56.63	-	-	-	-	-
Riochanda.....	-	-	-	-	77.54	-	63.53	67.19	-	-	81.82	-
Runyenjes.....	84.81	66.67	63.89	62.50	65.24	60.03	59.20	56.48	63.04	59.46	62.77	61.10
Sagana.....	78.97	91.38	85.15	-	77.71	65.53	-	77.22	62.95	71.10	70.66	69.81
Sega.....	98.00	90.00	82.50	80.00	88.00	-	-	82.50	80.00	76.00	60.00	62.50
Siakago.....	66.67	67.71	68.75	66.67	68.64	60.24	56.52	59.94	59.06	63.20	54.31	58.06
Siaya.....	112.59	102.65	96.29	-	90.52	86.49	91.91	75.17	74.59	73.49	80.02	83.51
Sibanga.....	83.33	81.25	83.33	83.33	-	-	-	-	-	-	-	-
Soko Mjinga.....	-	-	-	83.45	88.32	-	56.56	66.35	64.43	-	-	-
Sotik.....	68.00	68.00	68.18	72.80	76.00	74.29	64.00	65.00	65.00	63.20	64.00	64.00
Tala.....	-	70.00	-	70.00	70.00	71.67	75.00	70.00	70.00	72.50	70.00	70.00
Thika.....	72.00	77.00	-	78.98	79.55	79.22	80.12	86.67	-	-	-	-
Toi.....	115.00	109.52	110.00	110.00	110.00	110.00	110.00	-	-	-	-	-
Turbo.....	100.00	100.00	105.00	112.50	115.50	90.00	90.00	85.00	-	80.00	83.75	82.50
Turkana.....	75.00	83.33	83.33	100.00	-	102.53	80.73	-	-	83.33	90.91	112.50
Ukunda.....	100.00	90.00	90.00	100.00	90.00	95.00	90.83	62.50	-	69.00	72.50	78.75
Unguja.....	98.75	98.13	95.38	100.00	74.44	69.33	74.11	75.28	74.17	72.63	81.68	83.33
Voi.....	-	-	-	-	-	-	63.33	-	-	-	-	-
Wajir Town.....	-	-	-	-	-	-	-	120.00	-	-	-	-
Wote.....	-	-	-	110.00	-	97.50	90.00	80.00	100.00	-	86.67	95.00
Total.....	88.10	88.74	88.84	90.52	87.50	85.03	82.07	75.72	74.55	74.42	74.95	76.80

- Data Not Available

Table 9(d): Average Monthly Retail Prices for Dry Beans, 2019 (per Kg)

Month/Town	Jan	Feb	Mar
Akala.....	-	-	-
Bomet.....	72.11	71.79	71.79
Bondo.....	84.90	-	-
Bumala.....	-	-	-
Bungoma Town	-	-	-
Bura Tana.....	-	100.00	-
Burma.....	-	100.00	-
Burn Forest.....	90.00	90.00	90.00
Busia Town	-	-	-
Butere.....	-	-	-
Chepsonoi.....	82.59	82.58	86.46
Cheptula.....	72.40	71.59	73.23
Daraja Mbili.....	58.57	62.72	70.43
Eldoret	90.00	90.00	92.50
Embu Town.....	52.17	59.44	54.35
Endebess.....	-	-	-
Engare.....	-	-	-
Gakoromere.....	66.67	66.67	66.67
Garissa Town.....	81.67	81.67	81.67
Garsen.....	80.00	80.00	80.00
Gatundu.....	85.00	51.67	41.67
Gikomba.....	-	-	-
Githurai.....	85.71	75.00	51.67
Harambee.....	-	-	-
Hola.....	-	100.00	-
Homabay.....	-	-	-
Iciara.....	60.99	65.97	65.22
Isiolo Town.....	76.67	55.00	50.00
Iten.....	100.00	100.00	100.00
Kabarnet.....	-	88.89	100.00
Kajiado.....	79.81	76.98	70.00
Kakamega.....	-	-	-
Kalundu.....	77.50	75.00	75.00
Kandara.....	-	-	-
Kangemi.....	-	-	-
Kapsabet.....	79.24	86.66	86.48
Karatina.....	83.47	-	-
Kawangware.....	-	-	-
Kegonga.....	84.00	72.00	-
Kehacha.....	68.46	74.27	78.67
Kerugoya.....	54.98	55.20	51.36

Table 9(d) Continued: Average Monthly Retail Prices for Dry Beans, 2019 (per Kg)

Month/Town	Jan	Feb	Mar
Kiambu.....	81.67	76.44	70.00
Kianjai.....	62.97	53.97	51.39
Kibirigo.....	72.73	90.91	100.00
Kiboswa.....	-	-	-
Kilgoris.....	-	-	-
Kimulot.....	64.00	65.50	70.00
Kipkaren.....	82.50	90.00	90.00
Kiriaini.....	-	70.00	71.25
Kiritiri.....	63.86	65.28	64.88
Kitale.....	78.33	83.33	83.33
Kongowea.....	-	-	-
Korokocho.....	-	-	-
Kutus.....	67.99	64.57	65.88
Kwale.....	78.00	78.75	77.50
Limuru.....	76.12	-	80.00
Lodwar.....	-	-	-
Machakos Town.....	75.00	80.00	80.00
Mackinon.....	-	-	-
Majengo.....	-	-	-
Makuyu.....	70.00	65.00	65.00
Marsabit Town.....	-	-	-
Mbale.....	84.09	84.85	83.84
Migori.....	71.49	69.35	71.11
Mulot.....	64.10	64.10	62.82
Mumias.....	-	-	-
Mundeta.....	68.18	68.93	73.03
Muthithi.....	75.00	68.75	67.00
Muthurwa.....	-	-	-
Muthurwa Narok.....	-	-	-
Mwembe Tayari.....	-	-	-
Nakuru Town.....	62.22	62.22	62.22
Nanyuki.....	77.57	77.14	78.28
Ndaragwa.....	-	-	-
Ndondori.....	-	-	-
Ngiya.....	83.39	-	-
Nyabite.....	77.27	72.73	79.55
Nyahururu.....	77.35	77.78	77.41
Nyeri.....	78.74	77.40	86.52
Ol Kalou.....	101.67	95.00	100.00
Oyugis.....	-	-	-
Riochanda.....	67.05	83.33	-
Runyenjes.....	59.09	60.38	60.87
Sagana.....	65.37	80.43	-
Sega.....	-	-	-
Siakago.....	63.86	63.86	64.57
Siaya.....	86.40	-	-
Sibanga.....	-	-	-
Soko Mjinga.....	71.80	72.06	-
Sotik.....	64.00	65.50	70.00
Tala.....	70.00	70.00	70.00
Thika.....	77.44	64.17	73.33
Toi.....	86.67	81.11	-
Turbo.....	85.00	86.00	90.00
Turkana.....	83.33	83.33	-
Ukunda.....	90.00	84.00	80.00
Unguja.....	87.11	-	-
Voi.....	86.67	81.11	-
Wajir Town.....	-	-	-
Wote.....	75.00	71.00	77.14
Total	74.64	72.59	72.15

-Data not Available

Table 10: Exports of Coffee and Tea

Month	COFFEE *		TEA	
	Quantity (MT)	Value '(KSh. Million)	Quantity (MT)	Value '(KSh. Million)
2018				
January.....	2,509.26	1,285.98	48,446.76	14,964.45
February.....	2,834.28	1,612.42	47,356.65	14,656.94
March.....	3,936.10	2,236.94	34,487.70	10,470.94
April.....	4,550.24	2,822.20	33,564.66	9,829.58
May.....	5,572.91	3,209.36	42,532.98	11,703.03
June.....	4,649.03	2,664.46	45,182.21	12,463.24
July.....	4,683.09	2,457.05	45,242.32	12,226.12
August.....	2,972.69	1,546.91	38,022.53	9,919.47
September.....	2,519.53	1,141.39	40,267.54	10,478.62
October.....	3,521.39	1,467.33	43,893.85	11,327.26
November.....	4,619.48	1,729.50	44,107.54	11,014.55
December.....	2,311.60	921.35	38,680.96	9,781.31
2019				
January.....	3,469.39	1,498.72	48,622.81	11,831.30
February.....	4,567.37	1,903.18	41,026.62	9,638.24
March.....	4,351.34	2,256.18	42,457.17	9,910.41
April.....	4,551.54	2,500.94	36,883.92	8,630.54
May.....	5,489.90	2,699.81	36,993.68	9,292.80

Source: KRA Customs and Border Control Services department

* Coffee, not Roasted

Table 11: Monthly Exports of Fresh Horticultural Produce

Month	Cut-flowers				Fruits				Vegetable			
	2018		2019*		2018		2019*		2018		2019*	
	Quantity (MT)	Value (KSh Million)	Quantity (MT)	Value (KSh Million)	Quantity (MT)	Value (KSh Million)	Quantity (MT)	Value (KSh Million)	Quantity (MT)	Value (KSh Million)	Quantity (MT)	Value (KSh Million)
January.....	15,941.08	12,354.09	15,354.55	9,939.87	2,897.01	458.01	3,241.48	507.45	8,293.18	2,086.58	9,794.17	2,503.41
February.....	17,501.03	12,682.70	17,598.49	10,914.69	5,973.81	827.86	8,564.62	1,236.09	6,128.07	2,946.02	7,016.72	1,869.56
March.....	14,686.27	8,438.88	16,209.75	8,861.73	10,758.95	2,079.12	12,183.15	1,757.85	7,548.81	2,098.62	5,357.63	1,826.03
April.....	12,833.44	9,116.46	15,381.62	9,959.90	11,995.51	1,627.26	10,403.68	1,542.81	4,825.37	2,130.99	5,149.66	2,171.14
May.....	13,329.46	11,531.07	15,120.42	9,355.87	7,535.17	1,076.26	8,915.77	1,152.12	6,792.62	1,949.64	5,275.12	1,810.50
June.....	9,617.48	6,986.57			6,948.90	1,241.66			4,946.37	1,410.29		
July.....	9,794.81	5,131.97			7,020.27	1,213.97			4,421.85	1,387.96		
August.....	11,560.38	10,669.69			8,403.10	1,608.97			7,090.14	2,842.46		
Sept.....	12,854.01	8,052.20			5,989.53	1,268.93			10,148.38	2,535.59		
October.....	15,319.05	9,029.33			2,235.80	393.45			10,841.18	2,617.76		
Nov.....	14,862.36	12,109.92			2,577.43	465.46			8,819.18	2,426.02		
Dec.....	12,927.72	8,089.85			3,306.50	570.14			5,963.54	3,253.25		
Total.....	161,227.10	114,192.74	79,664.83	49,032.06	75,641.97	12,831.09	43,308.70	6,196.32	85,818.72	27,685.19	32,593.30	10,180.64

Source: Horticultural Directorate

* Provisional

Table 12: External Trade

KSh Million						
Month	Domestic Exports	Re-Exports	Total Exports	Total Imports	Volume of Trade	Home use Imports
2018*						
January.....	46,227.50	7,219.43	53,446.93	157,516.94	210,963.87	150,660.74
February.....	49,398.06	7,873.55	57,271.61	128,943.27	186,214.89	125,930.74
March.....	46,310.17	4,682.59	50,992.76	152,038.51	203,031.27	142,361.49
April.....	43,138.42	6,909.26	50,047.68	150,002.08	200,049.76	138,412.71
May.....	47,728.87	7,585.00	55,313.87	168,020.10	223,333.98	161,799.90
June.....	48,724.34	4,194.90	52,919.25	142,525.50	195,444.74	137,593.90
July.....	46,391.15	6,493.71	52,884.86	152,648.13	205,532.99	150,329.69
August.....	43,297.56	7,689.34	50,986.90	149,306.97	200,293.87	139,351.18
September.....	42,637.13	4,140.25	46,777.38	129,796.06	176,573.44	125,826.66
October.....	44,137.25	5,821.96	49,959.22	149,245.11	199,204.32	137,316.22
November.....	44,073.60	4,241.97	48,315.57	153,491.79	201,807.35	149,201.71
December.....	39,405.36	4,607.23	44,012.59	126,686.88	170,699.47	121,827.30
2019*						
January.....	46,362.30	6,927.94	53,290.24	155,111.66	208,401.89	140,661.13
February.....	44,523.02	6,398.23	50,921.25	141,272.84	192,194.10	139,034.00
March.....	46,628.18	6,061.47	52,689.64	124,864.98	177,554.63	99,079.22
April.....	43,355.31	5,457.39	48,812.69	150,442.47	199,255.17	137,085.27
May.....	39,663.21	6,784.17	46,447.39	154,890.80	201,338.19	148,047.88

Source: Kenya Revenue Authority

* Revised

*Provisional

Table 13(a): Major Destinations of Domestic Exports

KSh Million											
Month/Country	Uganda	Tanzania	United Kingdom	Pakistan	Netherlands	Egypt	Germany	Rwanda	USA	United Arab Emirates	France
2018											
January.....	3,522.39	1,639.15	3,474.86	7,311.82	4,190.03	2,186.67	771.23	1,052.37	2,538.08	1,746.42	520.11
February.....	4,489.98	2,382.83	4,273.06	6,989.37	4,528.73	2,012.05	1,019.77	1,098.47	3,039.26	2,435.82	523.44
March.....	4,908.78	1,984.68	3,259.82	4,264.52	5,012.53	1,176.03	1,041.64	1,284.54	3,615.25	2,213.77	657.88
April.....	3,441.66	2,320.08	3,295.19	4,073.73	4,071.13	1,017.21	1,149.95	1,134.05	3,599.91	1,516.63	720.33
May.....	4,942.74	2,215.05	3,266.73	4,508.35	3,848.43	1,736.37	1,238.25	1,397.65	4,335.60	2,013.96	799.88
June.....	4,357.49	1,798.21	3,536.14	5,246.93	3,313.05	1,939.73	1,038.67	1,189.67	4,498.54	1,904.99	558.49
July.....	3,703.89	1,933.73	3,744.68	5,346.96	3,616.37	1,376.88	968.51	1,402.51	5,325.58	1,871.81	685.66
August.....	4,449.66	2,149.53	2,551.79	3,809.35	3,105.61	1,528.96	602.80	1,485.63	4,758.17	1,803.94	778.36
September.....	4,099.65	1,917.12	2,920.98	4,639.27	3,731.40	1,578.65	721.62	1,199.22	4,064.64	1,843.59	867.24
October.....	4,293.07	2,177.53	3,243.80	4,276.78	3,547.80	2,081.39	895.64	1,225.99	3,753.66	2,134.14	664.72
November.....	4,619.16	2,242.75	3,153.07	4,560.08	2,998.40	1,114.09	954.12	1,581.89	4,606.55	2,298.61	637.73
December.....	4,172.04	2,099.46	3,231.85	4,014.59	3,345.50	1,642.86	572.15	1,072.20	2,970.39	1,333.05	491.85
2019*											
January.....	4,345.11	2,113.06	4,418.99	4,411.96	4,650.98	2,068.80	895.63	1,043.44	3,732.43	1,928.94	625.27
February.....	4,353.75	2,056.67	3,720.80	4,289.18	4,902.82	1,454.58	1,233.55	1,269.53	3,305.64	1,466.29	602.51
March.....	4,535.53	2,173.74	3,700.36	4,293.95	4,824.51	1,726.32	1,033.20	1,570.68	3,905.57	1,577.08	657.19
April.....	4,107.53	2,458.48	2,698.56	3,764.79	3,486.03	1,648.32	1,262.31	1,504.01	5,172.36	1,314.89	593.37
May.....	4,118.12	2,401.50	1,986.05	3,455.38	2,572.99	1,701.92	1,137.79	1,872.06	4,181.74	1,406.15	449.66

Source: Kenya Revenue Authority

*Provisional

Table 13(b): Domestic Exports by Broad Economic Category

Value in KSh Million																	
Descriptions	2018												2019*				
	Jan	Feb	March	April	May	June	July	Aug	Sep	Oct	Nov	Dec	Jan	Feb	March	April	May
Food and beverages.....	23,051.52	23,232.62	21,014.80	20,757.93	24,126.58	24,229.24	24,092.74	20,203.48	20,137.41	20,824.33	19,673.36	17,112.10	21,025.36	18,983.27	20,692.22	18,971.96	19,193.86
Industrial supplies (Non-Food).....	11,579.15	10,714.74	11,125.05	10,480.43	9,879.49	12,088.29	9,146.03	11,410.24	9,902.97	9,991.85	10,934.19	10,194.75	11,444.61	10,795.21	10,917.59	10,953.34	8,361.64
Fuel and Lubricants.....	181.87	529.46	494.45	167.13	598.25	511.14	487.31	255.65	411.92	488.38	378.57	178.50	318.38	272.69	300.33	350.53	340.88
Machinery & other capital Equipment.....	534.54	892.58	487.63	556.91	604.95	483.99	560.93	504.43	462.97	572.65	695.02	435.48	514.53	596.35	1,228.54	1,104.23	856.40
Transport equipment.....	198.71	852.59	673.71	515.49	566.45	730.44	288.64	385.50	271.23	384.32	671.53	528.13	486.54	586.90	505.57	744.23	377.12
Consumer goods Not elsewhere specified.....	10,665.45	13,176.08	12,514.22	10,660.47	11,950.90	10,681.24	11,815.45	10,528.25	11,450.50	11,875.73	11,720.83	10,956.09	12,572.88	13,288.15	12,983.51	11,231.01	10,533.16
Goods not elsewhere specified.....	16.26	-	0.31	0.06	2.25	-	0.06	-	0.14	-	0.10	0.31	-	0.46	0.42	-	0.15
Total	46,227.50	49,398.06	46,310.17	43,138.42	47,728.87	48,724.34	46,381.15	43,297.56	42,637.13	44,137.25	44,073.60	39,405.36	46,362.30	44,523.02	46,628.18	43,355.31	39,663.21
Percentage Shares:																	
Food and Beverages.....	49.87	47.03	45.38	48.12	50.55	49.73	51.93	46.66	47.23	47.18	44.64	43.43	45.35	42.64	44.38	43.76	48.39
Industrial Supplies (Non-Food).....	25.05	21.69	24.02	24.29	20.70	24.81	19.72	26.35	23.23	22.64	24.81	25.87	24.69	24.25	23.41	25.26	21.08
Fuel and Lubricants.....	0.39	1.07	1.07	0.39	1.25	1.05	1.05	0.59	0.97	1.11	0.86	0.45	0.69	0.61	0.64	0.81	0.86
Machinery and other Capital Equipment.....	1.16	1.81	1.05	1.29	1.27	0.99	1.21	1.17	1.09	1.30	1.58	1.11	1.11	1.34	2.63	2.55	2.16
Transport Equipment.....	0.43	1.73	1.45	1.19	1.19	1.50	0.62	0.91	0.64	0.87	1.52	1.34	1.05	1.32	1.08	1.72	0.95
Consumer Goods not elsewhere specified.....	23.07	26.67	27.02	24.71	25.04	21.92	25.47	24.32	26.86	26.91	26.59	27.80	27.12	29.85	27.84	25.90	26.56
Goods not elsewhere specified.....	0.04	-	0.00	0.00	0.00	-	0.00	-	0.00	-	0.00	0.00	-	0.00	0.00	-	0.00
TOTAL	100	100	100	100	100	100	100	100	100	100	100	100	100	100	100	100	100

Source: Kenya Revenue Authority (KRA)

*Provisional

Table 14 (a) Major Origins of Imports

											Value (KSh Million)
Month	United Arab Emirates	United Kingdom	South Africa	Saudi Arabia	Japan	India	USA	Germany	Netherlands	France	China
2018											
January.....	5,396.68	3,159.61	5,955.10	12,913.24	8,454.68	21,468.99	8,421.64	2,987.22	3,277.64	1,926.07	27,460.82
February.....	9,905.83	2,290.87	4,901.65	9,645.02	6,067.21	15,332.90	5,845.90	2,985.08	1,331.88	2,084.16	25,258.07
March.....	18,589.13	2,256.46	6,446.64	14,031.70	7,849.47	11,455.19	6,665.67	3,771.61	1,474.25	1,373.02	35,566.06
April.....	22,353.41	2,288.50	5,556.46	10,404.19	7,505.30	16,568.68	4,635.84	3,995.14	1,298.71	1,916.45	29,623.45
May.....	16,077.89	2,639.18	5,485.20	13,493.78	5,609.39	18,141.58	3,113.78	6,626.71	1,500.46	1,573.98	48,641.65
June.....	8,830.67	2,768.91	6,145.49	18,885.40	7,344.82	9,083.70	2,684.04	3,184.28	1,780.01	1,697.78	36,172.60
July.....	8,139.67	2,760.69	5,953.65	21,451.55	9,137.63	14,313.12	3,913.45	4,132.34	1,311.70	2,367.15	35,314.50
August.....	11,003.85	3,093.38	4,732.03	20,262.87	8,323.90	14,726.19	3,399.50	3,345.10	1,947.04	1,804.59	29,039.38
September.....	9,724.29	2,261.72	3,253.66	4,557.89	8,914.82	24,813.09	3,543.27	3,673.28	1,520.35	2,034.83	25,117.04
October.....	15,988.21	2,459.48	5,557.09	17,310.25	8,760.00	15,204.47	4,054.71	4,873.15	1,130.61	2,268.36	26,837.16
November.....	15,162.36	2,787.09	5,792.41	12,713.03	13,797.14	13,643.55	3,655.81	3,032.26	1,602.66	2,801.76	27,835.45
December.....	6,244.67	2,789.51	4,954.14	17,034.05	8,058.31	10,500.64	3,311.54	3,993.06	1,188.80	2,081.33	23,960.20
2019*											
January.....	15,109.48	2,631.56	6,775.82	13,077.49	7,831.07	13,048.66	4,646.86	3,211.09	2,240.73	2,044.78	30,006.98
February.....	9,843.51	2,602.96	4,984.79	6,617.74	6,503.80	13,218.97	5,114.29	4,527.45	14,851.90	1,516.78	29,120.56
March.....	6,566.24	3,110.39	5,624.02	17,192.40	5,560.32	10,938.14	4,071.18	2,783.86	1,353.53	3,043.31	18,175.05
April.....	21,733.74	2,593.48	6,137.31	8,056.05	9,797.85	19,506.78	5,125.00	5,863.19	870.60	1,477.04	26,405.48
May.....	19,289.50	3,149.41	7,217.11	9,275.48	7,313.20	17,978.49	8,873.29	3,340.39	2,261.64	2,189.18	28,258.78

Source: Kenya Revenue Authority

*Provisional

Table 14(b): Imports by Broad Economic Category

Descriptions	Value in KSh Million																
	2018												2019*				
	Jan	Feb	March	April	May	June	July	Aug	Sep	Oct	Nov	Dec	Jan	Feb	March	April	May
Food and beverages.....	20,561.99	16,597.23	16,440.02	13,259.10	12,470.10	15,508.64	13,567.79	14,368.20	11,165.81	12,536.67	16,617.81	11,763.28	16,707.97	12,192.69	14,997.32	14,942.96	16,428.24
Industrial supplies (Non-Food).....	55,629.01	46,760.85	53,550.33	53,030.67	56,093.84	51,198.00	51,885.68	52,703.92	45,475.94	54,144.66	47,714.60	41,837.71	58,373.17	43,619.35	47,371.53	50,105.36	49,450.80
Fuel and Lubricants.....	24,976.86	21,019.22	30,660.02	30,577.85	33,731.69	27,038.10	30,271.98	32,880.38	23,068.28	28,657.31	29,822.49	23,130.65	26,421.76	24,222.45	21,740.91	36,072.07	35,181.94
Machinery & other capital Equipment.....	26,638.25	19,316.87	18,787.28	22,921.22	30,262.44	22,629.12	25,596.36	21,245.35	23,704.19	25,784.68	30,125.55	23,544.06	25,260.90	33,547.46	18,316.86	24,376.75	22,417.96
Transport equipment.....	14,478.40	13,755.69	18,680.17	18,118.14	22,314.22	14,150.52	18,952.26	15,263.91	12,797.24	13,969.56	13,442.94	13,177.65	14,982.67	15,487.91	11,675.71	13,255.27	15,901.07
Consumer goods Not elsewhere specified..	13,991.99	10,661.96	13,230.47	11,217.03	12,226.98	10,756.57	12,143.80	12,725.38	11,991.45	13,020.67	14,515.77	12,108.27	12,282.74	11,948.70	10,589.45	11,071.39	14,112.92
Goods not elsewhere specified.....	1,240.43	831.45	690.22	878.08	920.84	1,244.55	230.26	119.83	1,573.16	1,131.57	1,252.63	1,125.26	1,072.44	254.29	173.21	618.69	1,397.85
Total.....	157,516.94	128,943.27	152,038.51	150,002.08	168,020.10	142,525.50	152,648.13	149,306.97	129,796.06	149,245.11	153,491.79	126,686.88	155,111.66	141,272.84	124,864.98	150,442.47	154,890.80
Percentage Shares:.....																	
Food and Beverages.....	13.05	12.87	10.81	8.84	7.42	10.88	8.89	9.62	8.62	8.40	10.83	9.29	10.77	8.63	12.01	9.93	10.61
Industrial Supplies (Non-Food).....	35.32	36.26	35.22	35.35	33.39	35.92	33.99	35.30	35.04	36.28	31.09	33.02	37.63	30.88	37.94	33.31	31.93
Fuel and Lubricants.....	15.86	16.30	20.17	20.38	20.08	18.97	19.83	22.02	17.77	19.20	19.43	18.26	17.03	17.15	17.41	23.98	22.71
Machinery and other Capital Equipment....	16.91	14.98	12.36	15.28	18.01	15.88	16.77	14.23	18.26	17.28	19.63	18.58	16.29	23.75	14.67	16.20	14.47
Transport Equipment.....	9.19	10.67	12.29	12.08	13.28	9.93	12.42	10.22	9.86	9.36	8.76	10.40	9.66	10.96	9.35	8.81	10.27
Consumer Goods not elsewhere specified..	8.88	8.27	8.70	7.48	7.28	7.55	7.96	8.52	9.24	8.72	9.46	9.56	7.93	8.46	8.48	7.36	9.11
Goods not elsewhere specified.....	0.79	0.64	0.45	0.59	0.55	0.87	0.15	0.08	1.21	0.76	0.82	0.89	0.69	0.18	0.14	0.41	0.90
TOTAL.....	100	100	100	100	100	100	100	100	100	100	100	100	100	100	100	100	100

Source: Kenya Revenue Authority

*Provisional

Table 14 (c): Mobile Money Transactions

As at the end of month	Mobile money Agents	Mobile money subscriptions (millions)	Number of Transactions (millions)*	Value (KSh billions)
2018				
January.....	188,029.00	37.84	136.66	322.98
February.....	192,117.00	38.42	132.30	300.85
March.....	196,002.00	39.34	147.52	337.11
April.....	201,795.00	40.29	142.06	313.00
May.....	202,387.00	41.73	140.95	328.97
June.....	197,286.00	42.58	137.41	317.67
July.....	200,227.00	42.61	143.09	332.35
August.....	202,627.00	43.56	149.52	348.91
September.....	203,359.00	44.27	145.99	327.66
October.....	211,961.00	45.44	155.16	343.23
November.....	206,312.00	46.23	153.15	343.87
December.....	205,745.00	47.69	155.77	367.77
2019				
January.....	201,336.00	40.30	154.24	368.02

Source: Central Bank of Kenya

Table 14(d): International trade in ICT

KSh Million

	2018												2019
	Jan	Feb	March	April	May	June	July	Aug	Sep	Oct	Nov	Dec	Jan
Imports													
Office machines ¹	163.71	81.60	48.55	111.40	204.66	138.47	104.43	147.57	232.83	59.04	101.24	722.12	91.44
Automatic data processing machines, storage units etc.....	897.00	1,271.08	663.33	968.60	1,093.24	865.65	1,259.76	1,321.71	601.80	831.79	1,274.83	681.60	1,388.08
Part and accessories 2.....	81.76	38.87	60.86	40.99	43.78	78.06	56.09	49.62	68.88	49.28	58.18	41.68	65.45
Monitors and projectors and reception apparatus for television ³	523.58	810.26	391.18	653.94	843.03	563.63	876.14	775.11	591.03	582.63	993.44	469.56	784.62
Reception apparatus for radio broadcasting ⁴	10.03	11.86	14.83	4.66	7.85	14.64	12.45	26.62	17.42	24.23	458.31	25.62	18.96
Recording equipments ⁵	23.14	18.05	8.27	30.64	6.56	10.09	45.61	30.89	14.31	16.97	331.65	22.06	21.67
Telecommunications equipment 6.....	1,742.38	1,822.21	1,574.82	1,659.62	1,981.77	2,148.07	2,762.25	2,341.38	2,206.31	1,453.03	3,507.65	2,314.89	4,480.02
Exports													
Office machines 1.....	0.01	11.90	8.01	0.18	112.45	2.85	0.93	3.89	7.08	0.27	3.24	3.97	8.09
Automatic data processing machines, storage units etc.....	10.46	70.10	27.74	59.78	22.76	12.14	28.10	8.47	25.37	27.59	22.32	32.22	17.90
Part and accessories 2.....	1.08	0.35	15.79	0.52	1.16	11.52	2.85	1.49	11.70	-	1.45	1.53	1.50
Monitors and projectors and reception apparatus for television ³	9.06	13.19	35.47	15.00	6.31	20.49	52.71	1.25	21.77	26.23	0.46	9.79	2.71
Reception apparatus for radio broadcasting ⁴	-	1.22	2.36	1.33	5.84	9.20	0.09	0.00	0.20	0.05	0.03	1.63	0.01
Recording equipments 5.....	0.06	0.31	0.55	9.07	0.22	0.15	0.07	0.09	0.41	0.16	0.02	0.22	0.02
Telecommunications equipment 6.....	13.21	40.75	63.47	21.01	90.39	43.91	82.25	117.56	33.40	9.76	39.20	23.94	49.42

¹ Electronic calculating machines, cash registers, accounting machines, postage-franking machines, ticket issuing machines, reproducing and displaying machines with calculating functions, duplicating machines and their parts/accessories etc

² For office machines and data processing machines

³ Include Television sets, decoders etc

⁴ Whether or not combined with sound recording or reproducing apparatus or a clock

⁵ Sound recording, video recording or reproducing apparatus including or not including a video tuner

⁶ Such as computer, laptops, networking equipments etc plus their parts and accessories such as telephone sets, microphones, electric sound amplifier sets Television cameras, digital or video cameras recorders, radio or tv transmission apparatus etc

Table 15(a): Local Electricity Generation by Source

							KWh Million
Month	Hydro	Geo - Thermal	Thermal*	Wind	Solar	Co-Generation	Total
2018							
January.....	222.95	430.49	242.34	3.26	-	1.45	900.49
February.....	193.43	387.02	249.13	6.86	-	0.62	837.06
March.....	248.39	448.12	202.18	4.11	-	0.07	902.87
April.....	316.85	427.73	138.66	3.24	-	0.07	886.55
May.....	385.88	447.05	82.92	1.70	0.02	0.08	917.65
June.....	400.86	430.00	82.37	1.23	0.01	0.01	914.48
July.....	420.32	438.12	86.86	1.69	-	0.02	947.01
August.....	417.37	426.57	117.23	2.52	0.01	0.02	963.72
September.....	392.07	439.80	85.33	7.46	0.01	0.02	924.69
October.....	365.42	432.03	87.21	76.86	0.01	0.02	961.55
November.....	340.07	397.58	80.15	133.40	5.77	0.02	956.99
December.....	282.78	423.32	91.53	133.26	7.79	0.04	938.72
2019*							
January.....	278.92	417.35	114.07	147.55	7.99	0.02	965.90
February.....	253.91	374.43	98.56	146.21	7.02	0.01	880.14
March.....	282.83	445.10	99.00	144.00	8.07	0.02	979.02
April.....	191.99	397.66	181.14	142.21	8.19	0.01	921.20
May.....	242.63	427.38	110.34	164.12	7.91	0.00	952.39

*Provisional

Fig. 7: Electricity Generation by Source

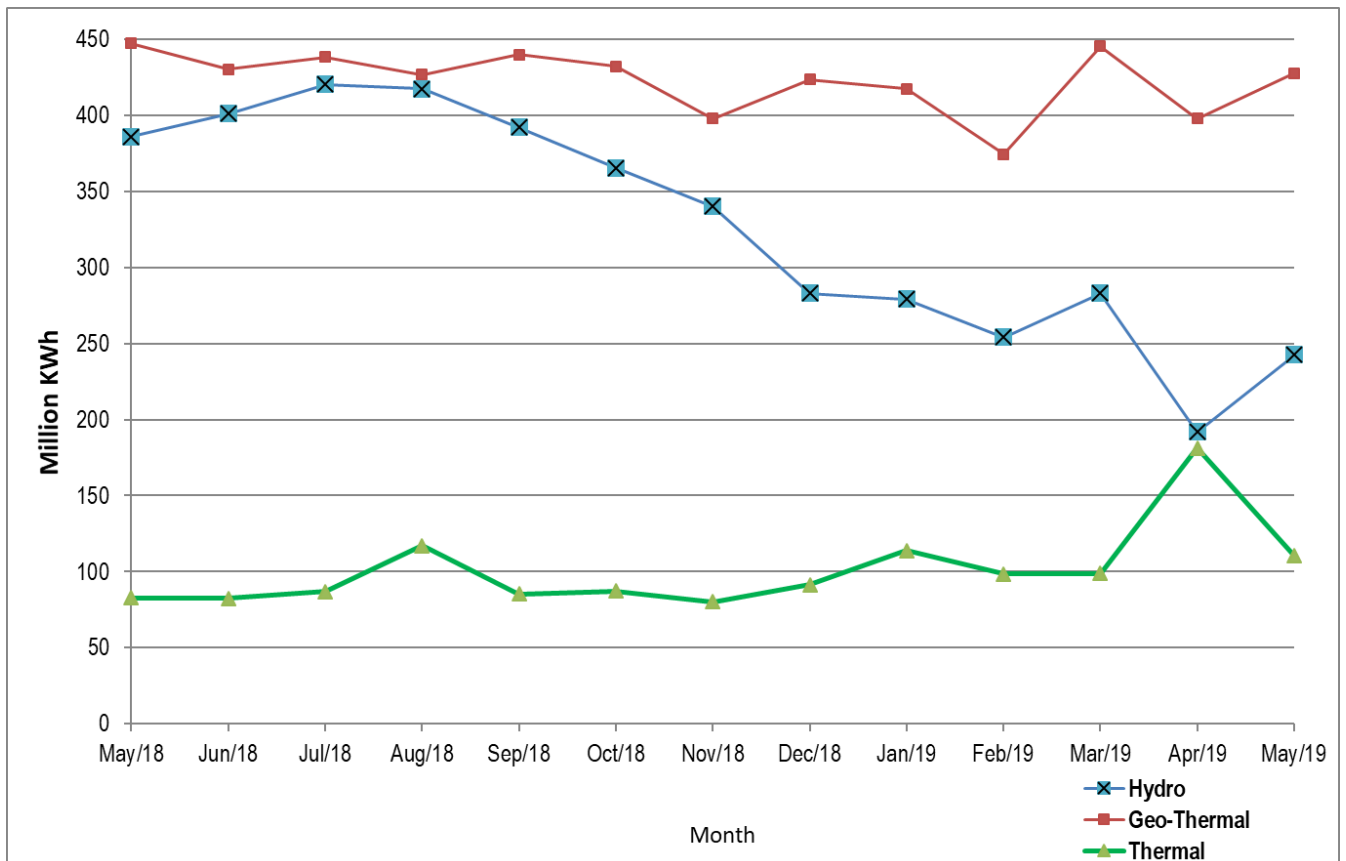


Table 15(b): Generation and Consumption of Electricity

Million KWh										
Month	Generation					Consumption				
	Local Generation	Imports			Total	Total Generation	Total KPLC Sales	Exports		
		Uganda	Tanzania	Ethiopia				Uganda	Tanzania	Total Exports
2018										
January.....	900.49	19.04	-	0.35	19.39	919.88	731.06	0.96	0.22	1.18
February.....	837.06	18.62	-	0.32	18.94	856.00	684.62	0.93	0.09	1.02
March.....	902.87	11.03	-	0.26	11.29	914.16	745.60	3.20	0.04	3.24
April.....	886.55	8.20	-	0.14	8.34	894.89	688.30	3.55	0.06	3.61
May.....	917.65	8.39	-	-	8.39	926.04	712.00	3.24	0.01	3.25
June.....	914.48	8.38	-	-	8.38	922.86	726.76	3.20	-	3.20
July.....	947.01	8.19	-	-	8.19	955.20	709.30	3.35	-	3.35
August.....	963.72	12.06	-	-	12.06	975.78	730.67	2.67	-	2.67
September.....	924.69	7.60	-	-	7.60	932.29	740.93	3.31	-	3.31
October.....	961.55	8.90	-	-	8.90	970.45	737.71	3.26	-	3.26
November.....	956.99	8.86	-	-	8.86	965.85	750.97	3.36	-	3.36
December.....	938.72	9.89	-	-	9.89	948.61	714.86	3.76	-	3.76
2019*										
January.....	965.90	15.18	-	-	15.18	981.08	778.12	1.85	0.01	1.86
February.....	880.14	13.92	-	0.36	14.28	894.42	691.32	1.91	-	1.91
March.....	979.02	16.75	-	0.39	17.14	996.16	752.26	1.70	-	1.70
April.....	921.20	26.85	-	0.37	27.22	948.42	736.38	0.71	-	0.71
May.....	952.39	24.23	-	0.30	24.53	976.92	733.14	0.19	-	0.19

*Provisional

Table 15(c): Consumption of Petroleum Fuels

								'000 MT
Month	AGO (Light Diesel Oil)	Jet	Fuel Oil	Motor Spirit	Illuminating Kerosene	IDO (Heavy Diesel Oil)	LPG	Aviation Gasoline
2018								
January.....	188.50	58.94	55.21	111.36	36.78	0.00	18.48	0.12
February.....	174.78	54.30	45.29	105.75	38.55	0.00	16.24	0.11
March.....	167.95	56.94	56.66	121.07	35.00	0.02	20.40	17.62
April.....	181.18	53.94	29.19	111.36	36.11	0.00	21.65	0.12
May.....	195.01	53.71	26.62	123.34	39.75	0.00	22.21	0.11
June.....	183.63	51.39	25.00	114.63	32.58	0.00	22.38	0.10
July.....	191.28	56.26	25.02	113.14	30.01	0.00	22.58	0.10
August.....	212.37	63.75	28.50	126.09	24.98	0.17	21.48	0.12
September.....	162.57	60.89	23.71	92.88	16.80	0.00	19.52	0.09
October.....	186.38	52.79	37.11	112.84	16.53	0.00	12.65	0.11
November.....	175.30	51.87	25.70	113.73	18.85	0.02	13.96	0.11
December.....	154.21	59.61	24.00	112.81	13.44	0.00	10.77	0.12
2019*								
January.....	183.69	61.25	30.61	119.69	19.54	0.00	28.49	1.33
February.....	183.39	56.64	26.00	115.41	16.00	0.00	26.91	0.74
March.....	186.17	56.48	33.37	113.79	14.83	0.83	20.01	1.40
April.....	195.90	53.49	44.77	125.34	15.38	0.00	18.72	1.21
May.....	195.87	54.50	38.89	121.46	15.45	0.00	18.72	1.38

Source: Ministry of Energy and Petroleum

MT: Denotes Metric Tonnes

*Provisional

Table 15(d): Average Retail Prices for Selected Fuel Products within Nairobi

KSh per litre			
Period	Motor Gasoline Premium	Light Diesel Oil (Gasoil)	Illuminating Kerosene
2018			
January.....	106.30	94.82	74.78
February.....	107.92	96.96	76.75
March.....	107.46	97.86	77.45
April.....	106.83	97.86	76.72
May.....	107.17	98.64	78.22
June.....	108.81	103.60	84.10
July.....	112.20	103.25	85.73
August.....	113.73	102.74	84.95
September.....	116.79	108.12	108.41
October.....	115.73	109.72	108.84
November.....	116.79	108.12	108.41
December.....	113.54	112.28	105.22
2019			
January.....	104.21	102.24	101.70
February.....	100.09	95.96	96.50
March.....	101.35	96.61	99.46
April.....	106.60	102.13	102.22
May.....	112.03	104.37	104.62

Table 15(e): Average Retail Prices for Selected Fuels in Kenya

Period	Motor Gasoline Premium (KSh per Litre)	Light Diesel Oil (KSh per Litre)	Illuminating Kerosene (KSh per Litre)	L.P.G (KSh per 13 Kg)	Charcoal (KSh per 4 Kg Tin)
2018					
January.....	107.17	95.79	75.74	2,140.37	83.47
February.....	108.79	97.92	77.71	2,150.20	84.49
March.....	108.33	98.82	78.41	2,169.19	107.36
April.....	107.70	98.82	77.68	2,172.24	125.48
May.....	108.04	99.60	79.18	2,164.43	135.64
June.....	109.67	104.55	85.05	2,170.92	138.13
July.....	113.07	104.21	86.69	2,176.31	137.39
August.....	114.58	103.69	85.90	2,177.32	137.71
September.....	117.54	108.97	109.25	2,187.21	141.24
October.....	116.48	110.57	109.68	2,185.79	140.93
November.....	117.54	108.97	109.25	2,141.46	141.12
December.....	114.30	111.89	106.15	2,193.42	141.62
2019					
January.....	104.99	103.10	102.56	2,193.13	141.22
February.....	101.13	96.83	97.63	2,189.99	141.04
March.....	102.13	97.47	100.31	2,191.84	140.42
April.....	107.57	103.09	102.49	2,184.85	145.05
May.....	112.79	105.23	105.48	2,193.17	146.24

Fig. 8: Average Prices for Liquefied Petroleum Gas in Kenya ('000 KSh per 13 Kg cylinder)

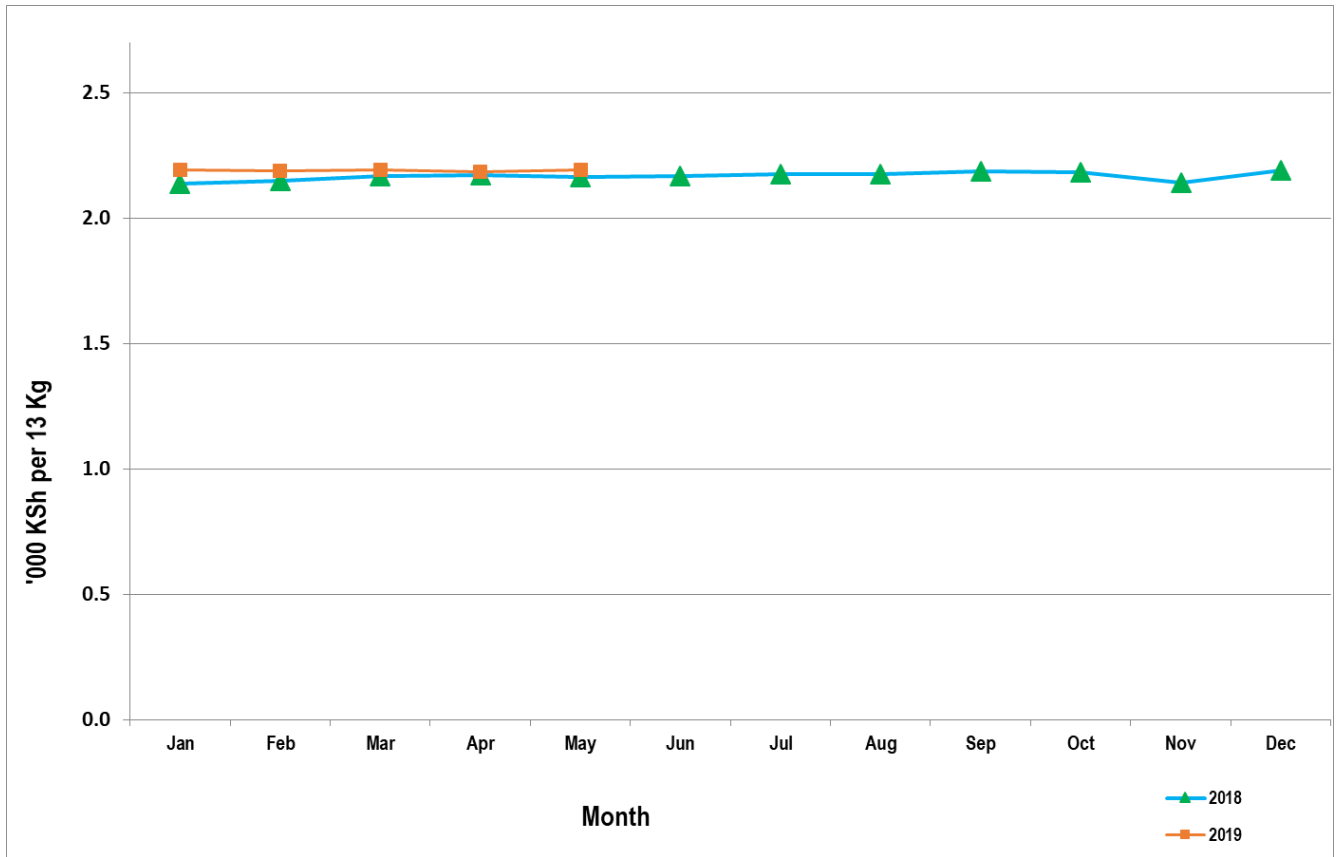


Table 15(f): Murban ADNOC Crude Oil Prices

						US\$/BBL
Month/Year	2014	2015	2016	2017	2018	2019
January.....	109.75	46.40	29.95	55.35	66.28	60.81
February.....	109.95	56.55	33.00	56.10	65.98	65.64
March.....	108.30	56.10	38.20	52.60	66.31	68.60
April.....	107.95	60.55	42.00	53.40	70.97	73.05
May.....	109.15	65.75	47.35	51.45	76.71	69.70
June.....	111.65	63.70	49.05	47.30	73.22	
July.....	109.50	57.70	44.60	48.60	76.00	
August.....	104.25	48.85	48.85	48.85	74.91	
September.....	97.95	46.60	45.50	55.70	78.75	
October.....	87.35	47.30	51.35	63.83	81.28	
November.....	77.00	43.55	46.15	63.65	68.05	
December.....	60.65	37.25	54.15	62.06	59.33	

US\$/ BBL: US Dollar per Barrel

Price: Abu Dhabi Free On Board (FOB)

ADNOC: Abu Dhabi National Oil Corporation

Table 16: Value of Building Plans Approved

KSh Million

Month	Actual Value of Buildings			Real *		
	Residential	Non-Residential	Aggregate	Residential	Non-Residential	Aggregate
2018						
January.....	13,122.47	6,824.92	19,947.39	154.20	78.25	231.85
February.....	10,917.29	9,822.84	20,740.13	128.29	112.62	241.07
March.....	12,810.54	6,607.25	19,417.78	150.53	75.75	225.70
April.....	-	-	-	-	-	-
May.....	12,917.29	7,122.58	20,039.87	151.79	81.66	232.93
June.....	13,409.58	7,207.25	20,616.83	157.57	82.63	239.64
July.....	10,624.92	7,201.69	17,826.61	124.85	82.57	207.20
August.....	10,735.63	4,880.78	15,616.41	126.15	55.96	181.51
September.....	11,132.49	6,147.54	17,280.03	130.82	70.48	200.85
October.....	9,696.37	8,082.13	17,778.50	113.94	92.66	206.65
November.....	15,319.80	9,354.40	24,674.20	180.02	107.25	286.80
December.....	11,152.41	5,206.55	16,358.96	131.05	59.69	190.15
2019						
January.....	10,435.29	7,064.94	17,500.23	114.03	75.22	188.92
February.....	10,357.13	7,435.42	9,792.55	113.18	79.16	105.71
March.....	12,256.40	8,991.05	21,247.45	133.94	95.73	229.37

Source: Nairobi City County

* Actual deflated by relevant construction cost indices (Dec1972 =100)

- No Building plans were approved

Table 17(a): Domestic Production of Sugar

Month/Year	Metric Tonnes						
	2013	2014	2015	2016	2017	2018	2019*
January.....	49,046	64,298	63,227	64,499	53,071	62,819	53,060
February.....	50,036	60,044	57,917	59,863	49,094	53,833	46,139
March.....	43,647	63,365	63,389	65,708	42,238	49,148	45,418
April.....	39,151	47,279	46,280	48,802	26,230	36,682	34,521
May.....	36,529	44,094	44,081	45,156	15,246	28,933	35,257
June.....	49,512	42,866	46,098	53,797	16,113	28,320	
July.....	61,802	55,912	47,957	56,948	17,882	30,105	
August.....	58,687	50,140	54,089	52,232	10,892	35,646	
September.....	50,303	47,915	61,069	44,686	21,649	37,652	
October.....	52,751	42,197	56,360	48,929	32,296	45,324	
November.....	54,752	34,455	43,401	51,298	43,175	38,768	
December.....	53,994	64,298	48,089	46,422	49,240	38,268	
Total.....	600,210	592,668	631,957	638,340	377,126	485,498	214,395

Source: Sugar Directorate

*Provisional

Table 17(b): Production of Soft Drinks

	'000 Litres						
Month	2013	2014	2015	2016	2017	2018	2019*
January	32,809	39,007	41,348	41,348	50,409	52,062	52,062
February	36,068	39,146	41,440	41,440	43,353	49,685	50,806
March	42,552	40,320	48,865	48,865	50,623	52,580	51,419
April	27,345	37,885	42,148	42,148	46,399	45,690	54,515
May	27,581	40,430	36,874	36,874	40,742	41,482	
June	30,919	28,706	36,274	36,202	45,875	44,827	
July	28,464	33,790	32,086	32,158	41,980	43,725	
August	27,697	33,404	38,432	38,508	41,217	48,795	
September	36,026	35,899	40,176	40,291	40,221	45,956	
October	34,810	41,601	42,936	43,203	45,275	46,546	
November	36,272	40,134	40,025	40,141	45,073	50,201	
December	43,438	49,142	49,966	49,966	66,378	54,021	
Total	403,981	459,464	490,568	491,143	557,548	575,569	208,802

**Provisional*

Table 17(c): Production of Assembled Vehicles

Month/Year	Numbers						
	2013	2014	2015	2016	2017	2018*	2019*
January	435	511	601	363	276	395	336
February	536	792	949	587	578	529	524
March	496	737	922	650	645	548	514
April	584	798	813	658	436	409	567
May	560	832	827	642	434	407	614
June	609	856	745	482	323	366	
July	617	809	757	491	483	587	
August	578	828	931	605	302	434	
September	590	886	1,029	623	351	606	
October	652	887	1,139	357	370	569	
November	733	724	972	461	364	476	
December	558	586	496	376	322	327	
Total	6,948	9,246	10,181	6,295	4,884	5,653	2,555

**Provisional*

Table 17(d): Production of Galvanized Sheets

Metric Tonnes							
Month/Year	2013	2014	2015	2016	2017	2018	2019*
January	25,528	22,090	21,304	21,330	26,230	23,919	25,390
February	22,874	18,573	20,078	20,102	22,994	21,890	25,480
March.....	26,296	21,267	22,797	20,120	22,574	22,048	24,451
April.....	26,010	25,989	20,674	23,109	23,225	21,434	25,022
May	23,866	27,433	23,132	21,980	23,081	22,271	
June.....	26,147	24,465	20,358	20,180	15,424	21,434	
July	25,007	21,779	18,415	18,320	22,640	23,252	
August.....	27,398	25,753	20,871	24,190	15,296	22,630	
September.....	25,051	26,126	20,581	21,045	24,188	23,509	
October.....	27,588	26,732	26,024	18,328	21,312	23,906	
November.....	26,628	25,763	25,764	19,143	24,357	22,877	
December.....	23,706	18,539	16,938	19,431	21,438	21,266	
Total.....	306,099	284,509	256,938	247,278	262,759	270,437	100,342

*Provisional

Table 17(e): Cement Production and Consumption

Metric Tonnes										
Month/Year	2015		2016		2017		2018		2019*	
	Production	Consumption	Production	Consumption	Production	Consumption	Production	Consumption	Production	Consumption
January.....	511,298	459,227	533,490	472,218	565,440	535,018	523,625	499,260	485,178	479,983
February.....	465,471	417,591	531,813	506,914	491,307	460,044	508,648	495,128	470,146	469,809
March.....	550,556	483,218	541,438	493,410	570,522	537,948	520,674	507,791	507,037	505,465
April.....	537,452	480,801	568,253	538,118	535,061	497,821	496,527	475,365	503,722	502,158
May.....	516,513	472,675	585,929	551,501	482,762	441,110	464,422	449,160	486,903	487,239
June.....	516,185	465,828	547,238	505,067	513,313	496,172	492,053	485,112		
July.....	570,904	451,461	575,193	556,244	553,631	527,774	518,656	511,240		
August.....	553,929	478,011	591,612	559,766	451,651	427,594	538,071	531,119		
September.....	561,235	518,435	528,494	504,639	531,067	506,694	518,641	514,568		
October.....	557,589	530,913	573,034	552,243	510,140	488,813	504,959	502,719		
November.....	510,747	480,641	584,780	547,359	489,376	454,727	496,346	494,038		
December.....	486,306	455,345	554,121	522,663	536,021	484,172	487,312	483,198		
TOTAL.....	6,338,184	5,694,146	6,715,395	6,310,142	6,230,293	5,857,887	6,069,934	5,948,698	2,452,985	2,444,654

*Provisional

Table 17(f): Milk Intakes in the Formal Sector

Million Litres							
Month/Year	2013	2014	2015	2016	2017	2018	2019*
January.....	49.32	54.04	57.17	56.80	45.13	51.55	68.07
February.....	42.48	46.60	37.80	52.83	46.24	47.30	54.66
March.....	40.28	49.26	35.77	48.41	38.64	49.85	54.33
April.....	44.43	45.01	35.59	54.35	47.09	52.01	41.46
May.....	50.62	43.56	52.97	49.49	47.24	49.63	40.99
June.....	44.46	44.47	51.02	66.37	48.87	50.33	
July.....	43.52	40.52	51.59	58.47	42.55	53.18	
August.....	37.90	41.76	50.94	56.15	54.95	52.56	
September.....	38.79	41.66	51.66	43.67	55.81	56.37	
October.....	38.87	43.52	55.42	56.93	58.14	55.25	
November.....	45.33	44.32	68.28	54.09	55.21	57.02	
December.....	47.03	45.32	58.87	50.66	51.51	68.15	
Total.....	523.03	540.04	615.85	648.22	535.71	643.20	259.51

Source: Kenya Dairy Board

* Provisional

Fig. 9: Milk Intake in the Formal Sector

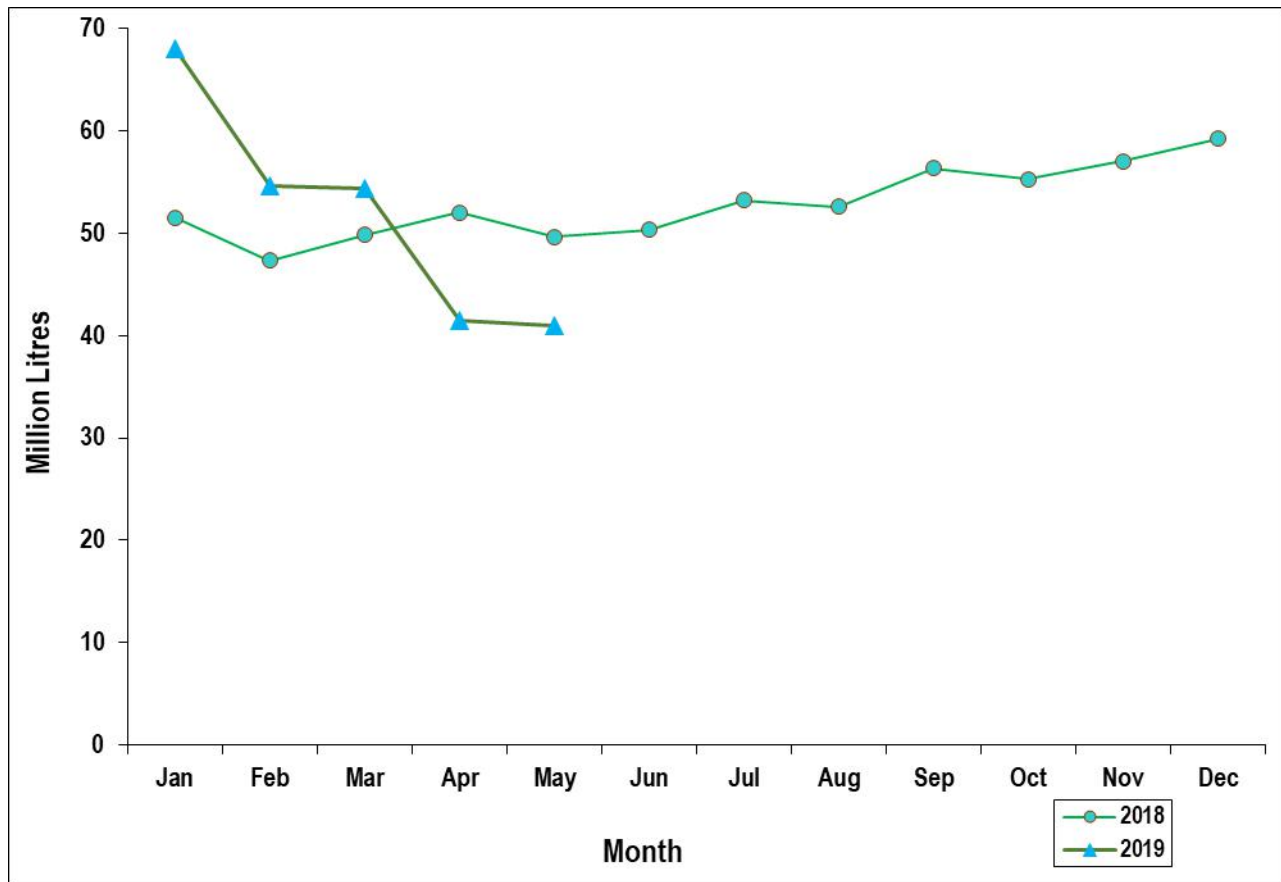


Table 18: Visitor Arrivals through J.K.I.A and M.I.A

			Numbers*
Month	AIRPORT		Total
	JKIA	MIA	
2017			
January	67,876	11,482	79,358
February	62,659	7,809	70,468
March	65,095	8,406	73,501
April	63,842	4,128	67,970
May	65,711	2,678	68,389
June	75,049	5,072	80,121
July	97,955	7,284	105,239
August	79,053	10,729	89,782
September	78,329	9,111	87,440
October	56,034	7,557	63,591
November	61,617	10,956	72,573
December	90,745	15,117	105,862
2018			
January	61,137	15,512	76,649
February	70,169	13,482	83,651
March	61,652	14,321	75,973
April	49,388	6,653	56,041
May	70,981	4,047	75,028
June	71,461	5,147	76,608
July	115,908	10,889	126,797
August	100,698	14,291	114,989
September	81,052	9,588	90,640
October	83,241	12,192	95,433
November	83,097	14,948	98,045

Source: Kenya Tourism Board

* Visitors arrivals exclude Kenyans

Fig. 10: Visitor Arrivals through J.K.I.A and M.I.A

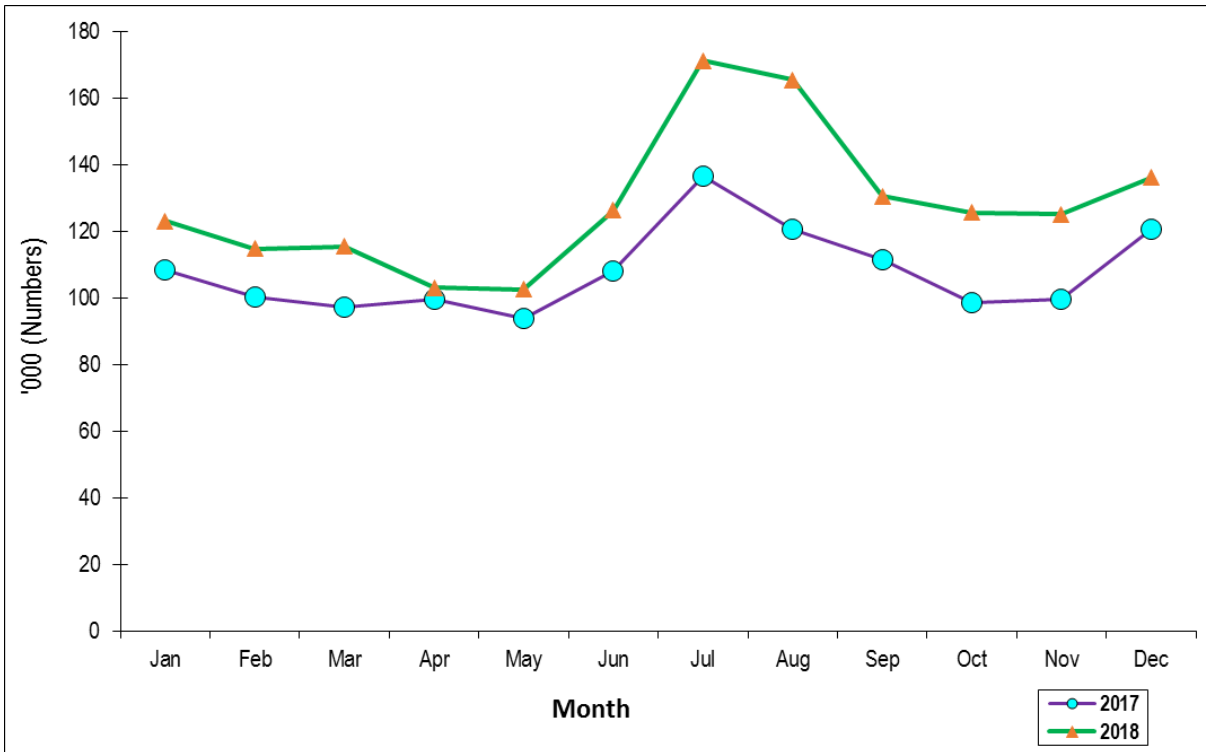


Table 19(a): Jomo Kenyatta international airport-Embarked Passengers by Port of Destination

PORTS/MONTH	2018										Number				
	Mar	Apr	May	June	Jul	Aug	Sep	Oct	Nov	Dec	Jan	Feb	Mar	Apr	May
Amsterdam.....	11,368	10,635	11,189	12,567	13,523	11,589	10,482	11,566	10,645	10,790	11,348	10,211	9,847	10,780	11,036
Brussels.....	0	0	0	0	0	0	0	0	0	0	0	0	0	0	0
London.....	11,066	10,852	9,912	11,400	10,105	11,722	11,496	10,713	8,872	8,023	7,744	7,502	9,273	10,852	10,879
Paris.....	3,465	3,795	3,537	4,522	5,433	5,098	3,042	4,326	7,655	6,351	5,479	3,569	5,648	6,369	4,632
Zurich.....	1,413	245	53	787	2,938	4,881	2,558	3,988	2,165	2,727	2,849	3,134	2,307	2,271	1,866
Other Europe.....	7,592	8,123	7,179	8,605	12,370	14,173	12,445	10,370	259	1,049	8,844	117	142	5	0
Total Europe.....	34,904	33,650	31,870	37,881	44,369	47,463	40,023	40,963	29,596	28,940	36,264	24,533	27,217	30,277	28,413
New York.....								492	3,044	4,320	5,174	2,720	3,906	3,281	3,851
Other North America.....								0	0	0	0	0	0	0	0
Total North America.....								492	3,044	4,320	5,174	2,720	3,906	3,281	3,851
Dubai.....	19,492	18,199	16,088	19,419	23,779	21,975	23,570	18,597	16,003	21,654	19,759	16,002	20,560	20,540	13,967
Jeddah.....	791	942	1,640	1,161	1,000	3,331	1,036	809	932	1,079	827	582	780	815	1,278
Other Middle East.....	16,589	17,811	16,268	17,161	21,679	30,633	21,947	17,254	16,753	21,384	21,224	15,706	15,300	17,831	17,381
Total Middle East.....	36,872	36,952	33,996	37,741	46,458	55,939	46,553	36,660	33,688	44,117	41,810	32,290	36,640	39,186	32,626
Mumbai.....	2,567	6,953	2,486	2,634	2,664	3,300	3,179	2,299	2,656	2,942	2,115	1,522	2,247	2,336	2,121
Bangkok.....	1,625	1,584	1,067	514	1,579	2,987	1,895	1,398	1,546	1,312	1,058	41	1,493	1,447	1,071
Other Far East.....	521	1,140	532	951	568	1,788	1,266	1,436	764	834	694	180	573	537	673
Total Far East.....	4,713	9,677	4,085	4,099	4,811	8,075	6,340	5,133	4,966	5,088	3,867	1,743	4,313	4,320	3,865
Addis Ababa.....	14,119	15,706	14,436	13,950	15,975	20,817	16,645	14,947	15,121	16,931	14,030	14,422	15,734	14,306	14,894
Bujumbura.....	1,161	1,419	1,285	1,215	1,484	1,093	528	449	667	596	510	479	405	402	843
Dar-es-alaam.....	5,387	6,755	8,258	6,820	6,284	6,168	6,339	4,014	5,104	5,604	4,608	4,752	4,351	4,447	6,112
Entebbe.....	9,084	9,754	10,464	9,620	9,565	10,189	11,317	10,864	10,863	9,747	6,940	5,744	9,098	9,552	11,332
Kigali.....	3,959	3,363	3,329	3,355	4,511	4,476	4,063	4,165	4,085	5,569	3,894	4,460	5,010	4,398	3,645
Kinshasa.....	319	528	354	1,014	441	292	391	416	470	282	295	155	661	699	516
Other East & Central Africa.....	2,936	3,050	2,822	2,974	2,741	5,397	3,882	3,147	2,484	2,109	1,896	3,405	2,004	2,059	2,531
Total East & Central Africa.....	36,965	40,575	40,948	38,948	41,001	48,432	43,165	38,002	38,794	40,838	32,173	33,421	37,263	35,863	39,873
Mauritius.....	555	709	565	1,370	1,531	2,233	1,686	1,445	1,457	2,008	974	746	1,273	1,984	1,851
Seychelles.....	586	1,183	710	1,324	854	1,149	699	551	567	759	435	294	602	789	611
Zanzibar.....	1,716	2,179	1,347	2,640	2,890	3,258	2,784	2,879	2,451	3,968	2,208	3,293	2,051	2,036	1,480
Other Indian Ocean Islands.....	994	1,034	914	982	453	2,179	938	1,013	903	814	386	166	1,089	1,076	786
Total Indian Ocean Islands....	3,851	5,105	3,536	6,316	5,728	8,819	6,107	5,888	5,378	7,549	4,003	4,499	5,015	5,885	4,728
Abidjan.....	504	327	407	603	685	897	454	464	380	388	320	425	516	525	393
Douala.....	466	642	354	683	301	256	1,785	363	173	99	629	259	346	281	134
Lagos.....	1,492	1,658	1,238	1,270	1,792	2,807	1,293	1,318	1,478	1,360	1,039	684	1,404	2,115	1,234
Accra.....	1,348	1,062	1,019	998	1,432	1,699	1,356	1,178	1,007	1,186	723	753	1,459	1,426	999
Other West Africa.....	209	19	194	265	206	34	245	603	557	634	340	273	442	329	396
Total West Africa.....	4,019	3,708	3,212	3,819	4,416	5,693	5,133	3,926	3,595	3,667	3,051	2,394	4,167	4,676	3,156
Johannesburg.....	10,476	7,939	7,906	7,762	8,042	8,350	9,058	8,209	7,511	6,867	5,916	4,780	8,859	9,014	6,694
Harare.....	793	868	1,094	882	1,058	824	1,280	1,104	778	974	567	75	662	1,049	888
Lilongwe.....	539	658	662	182	691	718	835	797	1,093	1,044	654	672	810	854	879
Lusaka.....	819	724	928	770	851	993	1,355	1,184	1,038	822	624	272	809	930	1,292
Cape Town.....	0	0	0	0	1,263	0	985	0	0	0	1,566	1,505	0	1,834	0
Other South Africa.....	1,299	1,386	1,114	975	1,405	2,282	1,548	1,215	4,528	1,085	1,074	692	1,028	974	1,124
Total Southern Africa.....	13,926	11,575	11,704	10,571	13,310	13,167	15,061	12,509	14,948	10,792	10,401	7,996	12,168	14,655	10,877
Cairo.....	1,773	1,691	1,712	1,957	2,309	2,641	2,288	2,319	2,519	2,941	2,584	2,261	2,960	2,566	2,754
Khartoum.....	858	539	535	660	446	756	646	578	583	587	538	5	428	441	454
Juba.....	2,731	3,404	2,735	2,580	3,072	2,655	2,161	1,829	2,737	2,264	2,841	2,183	2,361	2,233	2,201
Other North Africa.....	712	584	468	646	149	1,303	767	604	715	462	824	564	100	4	21
Total North Africa.....	6,074	6,218	5,450	5,843	5,976	7,355	5,862	5,330	6,554	6,254	6,787	5,013	5,849	5,244	5,430
Other International.....	6,853	5,997	6,267	6,872	8,822	8,277	7,785	7,763	7,356	6,711	7,306	6,487	7,022	6,199	5,378
Total International.....	148,177	153,457	141,068	152,090	174,891	203,220	176,029	156,666	147,919	158,276	150,836	121,096	143,560	149,586	138,197

Table 19(b): Jomo Kenyatta international airport- Landed Passengers by Port of Origin

PORTS/MONTH	2018											Number 2019				
	Mar	Apr	May	Jun	Jul	Aug	Sep	Oct	Nov	Dec	Jan	Feb	Mar	Apr	May	
Amsterdam.....	17,078	15,955	16,512	18,169	20,703	17,531	15,734	18,239	17,035	18,336	17,050	15,039	14,715	16,910	16,764	
Brussels.....	0	5	0	0	0	0	0	0	0	0	0	0	0	227	0	
London.....	15,279	12,403	14,303	15,679	17,089	16,484	15,071	15,799	13,294	13,226	12,615	11,651	11,958	13,761	14,267	
Paris.....	4,470	6,577	5,958	8,957	12,073	10,992	9,727	9,756	8,680	9,695	9,302	8,492	8,086	10,836	8,932	
Zurich.....	3,798	3,982	3,421	4,521	6,071	5,670	5,044	4,751	3,736	5,505	4,383	4,173	3,801	3,939	3,788	
Other Europe.....	7,695	6,427	7,697	9,737	14,249	13,111	11,653	11,169	8,269	8,951	8,717	7,991	7,507	6,021	7,444	
Total Europe.....	48,320	45,349	47,891	57,063	70,185	63,788	57,229	59,714	51,014	55,713	52,067	47,346	46,067	51,694	51,195	
New York.....								238	3,060	5,540	4,352	2,826	3,256	3,204	4,080	
Other North America.....								0	0	0	0	0	0	0	0	
Total North America.....								238	3,060	5,540	4,352	2,826	3,256	3,204	4,080	
Dubai.....	21,397	23,273	21,900	27,611	33,360	30,553	24,933	23,028	22,262	30,198	25,590	22,110	25,473	24,277	18,521	
Jeddah.....	1,099	1,226	1,178	3,469	2,360	3,368	3,465	2,061	2,178	2,361	1,649	1,686	1,659	1,788	1,885	
Other Middle East.....	17,346	16,349	16,469	21,234	30,701	27,625	18,966	16,391	20,547	23,967	19,866	15,518	15,410	20,077	18,513	
Total Middle East.....	39,842	40,848	39,547	52,314	66,421	61,546	47,364	41,480	44,987	56,526	47,105	39,314	42,542	46,142	38,919	
Mumbai.....	8,783	9,175	10,485	8,333	8,571	8,347	7,864	7,596	6,708	7,642	8,280	7,498	8,142	8,804	9,353	
Bangkok.....	6,504	6,938	6,397	6,050	7,151	6,944	6,117	6,165	6,288	6,311	6,462	5,254	6,453	6,635	8,464	
Other Far East.....	1,827	1,867	1,637	1,807	2,635	2,378	2,215	2,125	2,026	2,093	1,810	1,762	1,923	1,956	1,928	
Total Far East.....	17,114	17,980	18,519	16,190	18,357	17,669	16,196	15,886	15,022	16,046	16,552	14,514	16,518	17,395	19,745	
Addis Ababa.....	16,947	18,458	18,197	17,754	22,414	20,902	18,531	18,014	19,074	22,580	18,609	18,232	17,775	16,441	17,288	
Bujumbura.....	3,179	2,361	2,491	2,625	3,318	3,045	1,493	1,309	1,494	1,523	1,250	1,387	1,550	1,539	2,428	
Dar-es-alaam.....	10,557	10,249	10,096	10,245	12,191	12,563	11,161	11,292	11,472	11,315	10,722	10,215	10,918	10,386	9,900	
Entebbe.....	18,347	16,510	18,337	18,909	19,118	19,817	19,990	18,902	18,384	19,296	16,442	16,105	18,037	18,323	18,732	
Kigali.....	7,458	7,083	7,087	7,487	7,257	7,620	7,616	6,830	7,332	8,019	6,628	5,834	7,527	7,080	6,966	
Kinshasa.....	2,975	4,089	2,817	1,910	2,999	3,536	3,198	3,210	2,245	2,668	1,616	1,847	2,662	3,858	2,994	
Other East & Central Africa.....	6,106	6,241	5,358	7,176	8,844	9,453	7,482	7,657	6,484	6,612	6,826	7,090	7,126	5,363	5,891	
Total East & Central Africa....	65,569	64,991	64,383	66,106	76,141	76,936	69,471	67,214	66,485	72,013	62,093	60,710	65,595	62,990	64,199	
Mauritius.....	528	634	383	947	1,561	1,600	1,451	1,354	1,919	1,999	1,818	1,396	1,412	2,431	2,564	
Seychelles.....	1,420	1,521	1,641	1,094	1,261	1,394	1,009	1,177	1,548	1,670	1,287	827	1,093	1,726	1,720	
Zanzibar.....	6,226	4,655	3,655	5,587	6,458	8,532	7,360	7,249	6,399	6,914	6,423	6,857	6,197	4,971	3,678	
Other Indian Ocean Islands.....	5,576	6,142	6,148	3,882	5,874	6,843	6,988	8,345	12,357	10,628	8,922	7,135	7,468	7,408	5,601	
Total Indian Ocean Islands....	13,750	12,952	11,827	11,510	15,154	18,369	16,808	18,125	22,223	21,211	18,450	16,215	16,170	16,536	13,563	
Abidjan.....	1,585	1,636	1,746	1,591	2,024	1,712	1,849	1,752	1,507	1,546	1,410	1,586	1,954	1,654	1,658	
Douala.....	95	0	4	10	0	0	0	80	962	946	858	758	942	732	688	
Lagos.....	2,336	3,561	3,171	3,506	3,971	4,094	3,514	3,805	4,161	4,629	4,918	4,212	4,319	5,056	4,634	
Accra.....	3,924	3,900	3,753	3,848	3,995	4,024	3,967	3,987	3,804	3,540	3,628	3,137	3,603	3,701	3,843	
Other West Africa.....	4,529	3,795	4,003	3,795	4,081	4,008	4,732	3,890	2,291	2,696	1,872	1,748	2,014	2,284	2,813	
Total West Africa.....	12,469	12,892	12,677	12,750	14,071	13,838	14,062	13,514	12,725	13,357	12,686	11,441	12,832	13,427	13,636	
Johannesburg.....	15,231	14,374	15,082	16,522	14,898	15,449	16,130	13,698	14,543	17,842	12,813	11,916	12,660	13,536	12,227	
Harare.....	1,844	2,272	2,225	2,306	2,221	2,711	2,500	2,206	2,982	4,398	3,227	2,002	2,210	4,171	4,276	
Lilongwe.....	2,275	2,249	2,268	2,267	2,992	2,920	2,508	2,577	2,246	2,668	1,896	1,237	2,203	2,026	1,689	
Lusaka.....	3,516	3,782	3,903	3,879	3,879	4,290	4,194	3,889	3,673	4,293	3,234	2,571	3,240	4,199	3,558	
Cape Town.....	0	0	0	932	959	968	1,145	1,100	1,272	2,354	1,776	1,438	2,124	2,109	1,399	
Other South Africa.....	6,001	6,361	5,793	6,537	6,349	6,712	6,757	6,325	7,122	7,956	6,200	5,071	5,726	5,970	5,754	
Total Southern Africa.....	28,867	29,038	29,271	32,443	31,298	33,050	33,234	29,795	31,838	39,511	29,146	24,235	28,163	32,011	28,903	
Cairo.....	1,575	1,857	1,772	2,518	2,794	2,871	2,595	2,462	2,012	2,312	2,294	1,894	1,909	1,834	1,582	
Khartoum.....	1,666	1,658	1,768	1,514	2,005	1,810	1,962	1,948	1,818	1,549	1,016	746	804	1,183	1,486	
Juba.....	4,172	4,484	3,620	3,934	3,593	3,796	3,274	3,045	3,082	3,667	2,578	2,952	3,693	3,438	3,125	
Other North Africa.....	528	558	499	611	1,393	1,195	640	620	546	1,131	586	511	33	6	10	
Total North Africa.....	7,941	8,557	7,659	8,577	9,785	9,672	8,471	8,075	7,458	8,659	6,474	6,103	6,439	6,461	6,203	
Other International.....	7,528	7,355	8,625	8,102	8,120	9,538	7,353	6,338	337	6,340	6,646	7,033	6,737	8,042	3,896	
Total International.....	241,400	239,962	240,399	265,055	309,532	304,406	270,188	260,379	255,149	294,916	255,571	229,737	244,319	257,902	244,339	

Table 19(c): New Vehicle Registration

Body Type	2017			2018											
	Nov	Dec	Total	Jan	Feb	Mar	Apr	May	Jun	Jul	Aug	Sep	Oct	Nov	Dec
Saloons.....	1,139	1,086	11,376	972	487	559	887	917	641	1,031	853	733	1,010	879	869
Station Wagons...	5,951	5,800	55,322	5,113	3,272	3,285	5,121	5,783	3,901	6,271	5,581	4,803	6,958	5,914	5,814
Vans.....	498	465	5,484	522	370	347	444	450	367	506	437	409	491	452	447
Pick Ups.....	409	337	4,382	498	351	333	402	401	317	448	1,021	616	418	496	638
Mini Buses.....	47	29	459	45	-	52	59	51	41	58	54	56	63	70	61
Buses.....	87	88	1,072	75	96	81	96	74	108	111	89	79	108	90	92
Lorries.....	729	734	7,460	778	677	691	589	687	670	734	907	638	729	660	734
Trailers.....	186	143	1,953	223	120	192	151	162	166	171	147	213	170	132	166
Motor Cycles.....	13,162	14,013	186,434	14,345	18,073	16,935	13,659	14,431	13,921	13,959	18,682	14,756	17,661	18,043	17,286
Three Wheelers...	462	340	5,167	704	373	479	283	465	670	557	596	554	604	626	595
Wheeled Tractors	203	175	2,703	313	243	235	174	235	122	278	194	179	191	279	211
Others.....	81	54	860	88	61	101	55	73	87	108	88	98	63	72	80
Totals.....	22,954	23,264	282,672	23,676	24,123	23,290	21,920	23,729	21,011	24,232	28,649	23,134	28,466	27,713	26,991

Source: National Transport and Safety Authority

Table 19(d): Passenger and Cargo Movement on the Standard Gauge Railway

Month	2018 [†]		2019*		2018 [†]		2019*	
	Number of Passengers	Revenue (Ksh Million)	Number of Passengers	Revenue (Ksh Million)	Tonnage	Revenue (Ksh Million)	Tonnage	Revenue (Ksh Million)
January.....	135,772	110.20	113,061	125.44	22,345.50	25.50	359,744.40	517.15
February.....	118,360	101.93	112,966	125.11	57,632.90	49.88	302,674.50	442.60
March.....	131,698	125.53			164,254.00	181.54		
April.....	140,581	91.97			208,576.87	258.50		
May.....	116,171	129.46			228,800.00	294.08		
June.....	127,381	132.37			268,787.00	425.34		
July.....	137,676	194.03			306,105.00	527.42		
August.....	165,971	120.75			309,902.00	429.42		
September.....	122,958	121.73			309,873.00	422.57		
October.....	128,456	165.44			344,283.00	476.13		
November.....	153,885	220.87			331,752.10	500.02		
December.....	186,718	97.29			346,362.40	500.70		
Total.....	1,665,627	1,611.57	226,027.00	250.55	2,898,673.77	4,091.09	662,418.90	959.74

Source: Kenya Railways Corporation

*Provisional

[†] Revised