

# Leading Economic Indicators



## Kenya Inflation rate



FEBRUARY 2022

## LIST OF TABLES

Page

Number

### Contents

Table 1(a): Kenya Consumer Price Indices	7
Table 1(b): Kenya Inflation rate	8
Table 2: Mean Foreign Exchange rates of Kenyan Shilling against Selected Major Currencies at the end of the Month	10
Table 3: Interest rate (%)	11
Table 4: Nairobi Securities Exchange	12
Table 5(a): Money Supply	14
Table 5(b): Gross Foreign Exchange Reserves	15
Table 6: Coffee Sales and Prices*	16
Table 7: Tea Production and Auction Prices	17
Table 8: Cane Deliveries	18
Table 9(a): Average Monthly Retail Prices for Dry Maize, 2019 (per Kg)	19
Table 9(b): Average Monthly Retail Prices for Dry Maize, 2020 (per Kg)	20
Table 9(C): Average Monthly Retail Prices for Dry Beans, 2019 (per Kg)	21
Table 9(d): Average Monthly Retail Prices for Dry Beans, 2020 (per Kg)	22
Table 10: Exports of Coffee and Tea	23
Table 11: Monthly Exports of Fresh Horticultural Produce	24
Table 12: External Trade	25
Table 13(a): Major Destinations of Domestic Exports	26
Table 13(b): Domestic Exports by Broad Economic Category	27
Table 14 (a) Major Origins of Imports	28
Table 14(b): Imports by Broad Economic Category	29
Table 14 (c): Mobile Money Transactions	30
Table 14(d): International trade in ICT	31
Table 15(a): Local Electricity Generation by Source	32
Table 15(b): Generation and Consumption of Electricity	33
Table 15(c): Consumption of Petroleum Fuels	34
Table 15(d): Average Retail Prices for Selected Fuel Products within Nairobi	35
Table 15(e): Average Retail Prices for Selected Fuels in Kenya (National Average Retail Prices)	36
Table 15(f): Opec Reference basket and Murban Crude Oil Prices	37
Table 16: Value of Building Plans Approved for Nairobi City County	38
Table 17(a): Domestic Production of Sugar	39
Table 17(b): Production of Soft Drinks	40
Table 17(c): Production of Assembled Vehicles	41
Table 17(d): Production of Galvanized Sheets	42
Table 17(e): Cement Production and Consumption	43
Table 17(f): Milk Intakes in the Formal Sector	44
Table 18: Visitor Arrivals through J.K.I.A and M.I.A	45
Table 19(a): Jomo Kenyatta international airport-Embarked Passengers by Port of Destination	46
Table 19(b): Jomo Kenyatta international airport- Landed Passengers by Port of Origin	47
Table 19(c): New Vehicle Registration	48
Table 19(d): Passenger and Cargo Movement on the Standard Gauge Railway	49
Table 19(e): Monthly Cargo Throughput at the port of Mombasa	50

## LIST OF FIGURES

	Page Number
Fig. 1: Inflation rates .....	9
Fig. 2: End of Month Mean Exchange rate of Kenya Shillings against Major Selected Currencies .....	10
Fig. 3: Nairobi Securities Exchange 20 Share Index .....	13
Fig. 4: Coffee Sales at the Nairobi Coffee Exchange .....	16
Fig. 5: Tea Production .....	17
Fig. 6: Cane Deliveries .....	18
Fig. 7: Electricity Generation by Source .....	32
Fig. 8: Average Prices for Liquefied Petroleum Gas in Kenya ('000 KSh per 13 Kg cylinder) .....	36
Fig. 9: Milk Intake in the Formal Sector .....	44
Fig. 10: Visitor Arrivals through J.K.I.A and M.I.A .....	45

## KEY HIGHLIGHTS

### OVERVIEW

The Monthly Leading Economic Indicators report highlights changes in Consumer Price Indices (CPI) and inflation, interest & exchange rates. In addition, the report details changes in selected indicators of international trade, agriculture, energy, manufacturing, building and construction, tourism and transport.

### MACROECONOMIC INDICATORS

The Consumer Price Index (CPI) increased from 118.18 points in January 2022 to 119.13 points in February 2022. The overall rate of inflation dropped from 5.39 per cent to 5.08 per cent over the same period. In February 2022, the Kenyan Shilling depreciated against all other major currencies except the Tanzanian. The average yield rate for the 91-day Treasury bills, which is a benchmark for the general trend of interest rates dropped from 7.32 per cent in January 2022 to 7.28 per cent in February 2022.

The Nairobi Securities Exchange (NSE) 20 share index decreased from 1,889 points in January 2022 to 1,887 points in February 2022. At the same time the total number of shares traded increased from 221 million to 281 million. The total value of NSE shares traded increased from KSh 8.25 billion in January 2022 to KSh 9.97 billion in February 2022.

Broad money supply (M3), a key indicator for monetary policy formulation, increased from KSh 4,179.29 billion in January 2021 to KSh 4,220.7 billion in February 2022. The value of Gross Foreign Exchange Reserves increased from KSh 1,487.23 billion in January 2022 to KSh 1,489.81 billion in February 2022. On the other hand, the value of Net Foreign Exchange Reserves dropped from KSh 488.03 billion to KSh 473.60 billion during the same period.

## AGRICULTURE



The quantity of coffee auctioned at the Nairobi Coffee Exchange was 2,815.88 MT in December 2021 while the average auction price stood at KSh 789.20 per kilogram over the same period. The quantity of produced tea decreased marginally from 50,719.16 MT in November 2021 to 50,526.36 MT in December 2021. The price of processed tea rose from KSh 277.70 per kilogram in November 2021 to KSh 295.87 per kilogram in December 2021.

The quantity of cane deliveries increased from 649.40 thousand metric tonnes in December 2021 to 691.11 thousand metric

tonnes in January 2022.

The quantity of cut-flower exports in January 2022 was 11,360.35 MT while its value was KSh 6.50 billion. However, the quantity of vegetable exports decreased from 6,643.50 MT in December 2021 to 2,355.98 MT in January 2022. The value of vegetable exports decreased from KSh 1,678.40 million to KSh 867.14 million during the same period.

## INTERNATIONAL TRADE

Volume of trade dropped from KSh 301.58 billion in December 2021 to KSh 254.68 billion in January 2022. The value of total exports decreased from KSh 66.35 billion in December 2021 to KSh 60.41 billion in January 2022, while the value of imports decreased from KSh 235.23 billion in December 2021 to KSh 194.27 billion in January 2022. Domestic exports by Broad Economic Category (BEC) indicated that food and beverages was the main export category in January 2022 accounting for 46.67 per cent of the domestic exports, while non-food industrial supplies accounted for 26.52 per cent of the domestic exports.

Quantity of coffee exported increased from 2,314.35 MT in December 2021 to 3,283.60 MT in January 2022 while its value rose from KSh 1,918.64 million to KSh 2,633.51 million over the same period. The quantity of tea exported decreased from 47,922.07 MT in December 2021 to 45,584.65 MT in January 2022. The value of exported tea also dropped from KSh 12,724.88 million to KSh 12,628.76 million over the same period.

Imports by BEC indicate that non-food industrial supplies was the main import category in January 2022 with a share of 43.94 per cent. Fuel and lubricants; Machinery & other capital equipment; and transport equipment accounted for 17.96, 13.22 and 6.08 per cent of the total value of imports, respectively. Food and beverages accounted for 8.51 per cent of the total imports in January 2022.

## ENERGY



Total local electricity generation decreased from 1,026.03 million KWh in January 2022 to 926.40 million KWh in February 2022. In the international market, the price of the OPEC crude oil basket increased from US Dollars 85.41 per barrel in January 2022 to US Dollars 93.95 per barrel in February 2022.

The national average domestic retail oil prices of motor gasoline premium, light diesel and Kerosene was KSh 130.54, KSh 111.51 and KSh 106.46 per litre respectively in February 2022. Charcoal prices averaged KSh 63.71 per Kg while the price of a 13-Kg cylinder of gas averaged KSh 2,659.70 in February 2022.

## MANUFACTURING, BUILDING AND CONSTRUCTION



The quantity of cement produced decreased from 855,393 MT in January 2022 to 838,215 MT in February 2022. Consumption of cement was 844,597 MT in January 2022. Sugar production increased from 60,022 Metric tonnes in November 2022 to 62,333 Metric tonnes in December 202. Production of assembled vehicles increased from 968 units in December 2021 to 1,198 units

in January 2022. Milk uptake in the formal sector dropped from 69.36 million litres in January 2022 to 66.42 million litres in February 2022.

## ICT, TOURISM AND TRANSPORT



The total number of mobile money transactions was 171.39 million in January 2022 while their value was KSh 568.71 billion. The value of imports for telecommunication equipment decreased from KSh 4,139.32 million in December 2021 to KSh 1,995.15 million in January 2022.

The total number of visitors arriving through Jomo Kenyatta (JKIA) and Moi International Airports (MIA) increased from 69,932 persons in January 2022 to 73,950 persons in February 2022. The number of passengers who landed at Jomo Kenyatta International Airport (JKIA) increased from 121,846 persons in January 2022 to 133,243 persons in February 2022. On the other hand Passengers who embarked at JKIA by port of destination decreased from 141,532 persons to 139,214 persons over the same period. Total monthly throughput at the port of Mombasa rose from 2,666.80 thousand metric tonnes in January 2022 to 2,798.15 thousand metric tonnes in February 2022.

**Table 1(a): Kenya Consumer Price Indices**

**Kenya CPI: Base period February 2019=100**

Group	Nairobi			Nairobi Combined	Rest of Urban Areas	Kenya CPI
	Lower Income	Middle Income	Upper Income			
<b>2021</b>						
January.....	113.63	106.20	105.63	110.30	114.20	112.58
February....	114.56	106.75	106.56	111.11	114.97	113.36
March.....	115.15	107.12	107.25	111.64	115.36	113.81
April.....	116.11	107.64	107.38	112.36	116.44	114.75
May.....	116.37	107.75	107.86	112.60	116.67	114.98
June.....	116.48	107.88	108.15	112.73	116.80	115.11
July.....	116.80	108.63	108.42	113.19	117.05	115.45
August.....	116.86	108.88	108.54	113.31	117.42	115.71
September.	117.16	109.27	109.30	113.70	117.77	116.08
October.....	117.60	109.42	109.42	114.00	118.57	116.67
November .	117.84	109.69	109.69	114.26	119.30	117.20
December..	119.56	110.37	110.09	115.49	120.26	118.27
<b>2022</b>						
January.....	120.04	110.44	110.16	115.79	120.67	118.64
February....	120.76	110.82	110.47	116.35	121.11	119.13

*Notes*

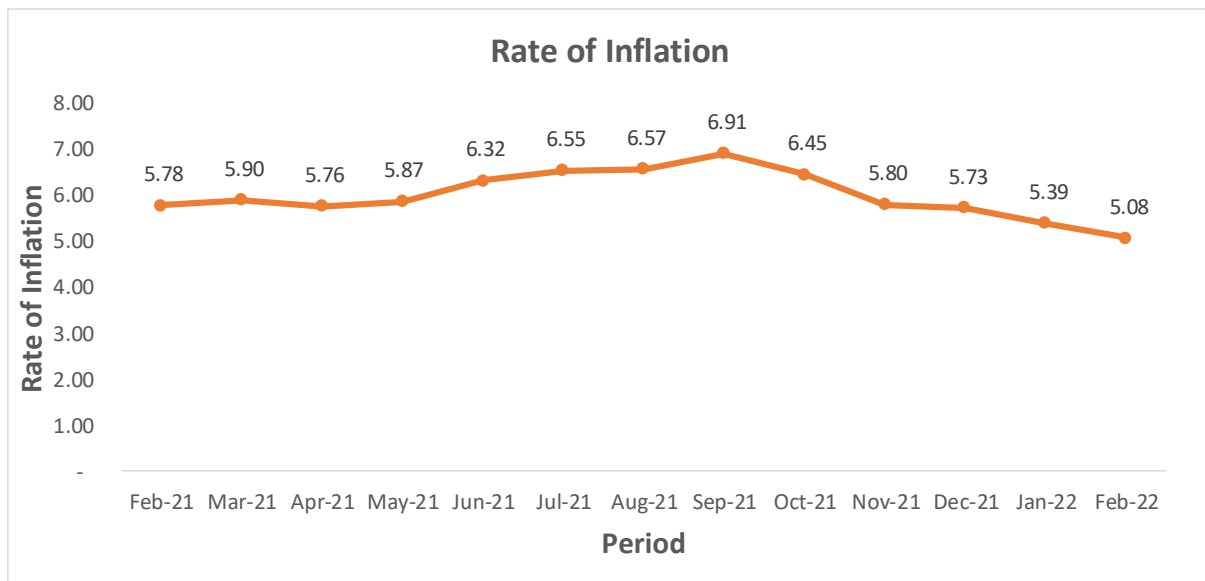
- 1.Nairobi Lower Income Group constitute of Households spending KSh. 46,355 or less per month in February 2015 (they are 70.89% of the households).
- 2.Nairobi Middle-Income Group constitute of Households spending between KSh. 46,356 up to and including KSh. 184,394 per month in February 2015 (they are 25.58% of the households).
- 3.Nairobi Upper Income Group constitute of Households spending above KSh. 184,395 per month in February 2015 (they are 3.53% of the households).



**Table 1(b): Kenya Inflation rate**

Period	Inflation Rates					
	Nairobi				Rest of Urban Areas	Kenya CPI
Lower Income	Middle Income	Upper Income	Combined			
<b>2021</b>						
January.....	5.70	3.11	2.91	4.57	6.48	<b>5.69</b>
February.....	5.73	3.30	3.05	4.66	6.56	<b>5.78</b>
March.....	5.78	3.48	3.70	4.82	6.65	<b>5.90</b>
April.....	5.67	3.45	3.55	4.74	6.47	<b>5.76</b>
May.....	5.86	3.86	3.71	4.99	6.48	<b>5.87</b>
June.....	6.17	3.60	4.15	5.14	7.15	<b>6.32</b>
July.....	6.18	5.09	4.46	5.65	7.17	<b>6.55</b>
August.....	6.33	5.20	3.81	5.69	7.19	<b>6.57</b>
September.....	6.47	5.44	4.84	5.96	7.58	<b>6.91</b>
October.....	6.52	4.79	4.61	5.76	6.93	<b>6.45</b>
November.....	5.86	4.71	4.87	5.39	6.08	<b>5.80</b>
December.....	5.74	4.47	4.74	5.24	6.07	<b>5.73</b>
<b>2022</b>						
January.....	5.65	3.99	4.29	4.98	5.67	<b>5.39</b>
February.....	5.41	3.81	3.67	4.72	5.34	<b>5.08</b>

**Fig. 1: Inflation rates**

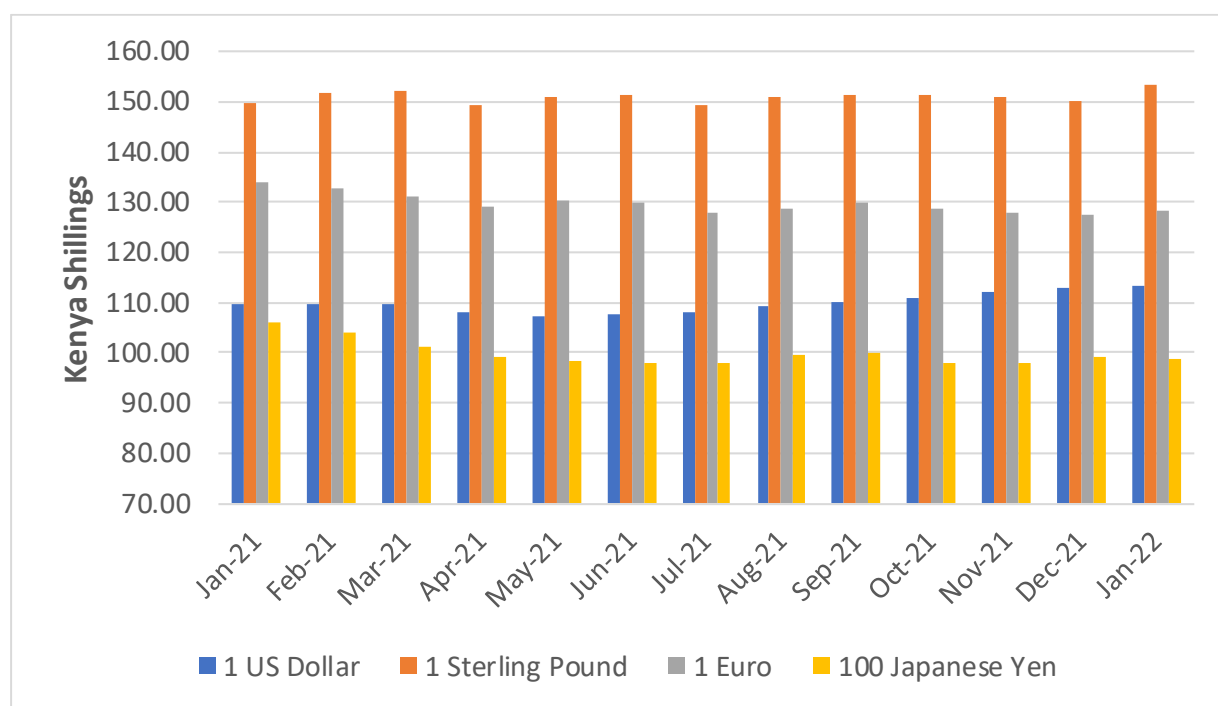


**Table 2: Mean Foreign Exchange rates of Kenyan Shilling against Selected Major Currencies at the end of the Month**

Year	2021											2022	
Currency	Feb	Mar	Apr	May	Jun	Jul	Aug	Sep	Oct	Nov	Dec	Jan	Feb
1 US Dollar.....	109.68	109.73	107.95	107.43	107.81	108.14	109.24	110.13	110.86	111.92	112.91	113.38	113.66
1 Pound Sterling...	151.80	152.21	149.30	151.06	151.45	149.37	150.87	151.51	151.58	150.97	150.15	153.59	153.71
1 Euro.....	132.62	130.96	129.13	130.41	130.07	127.89	128.59	129.80	128.60	127.94	127.64	128.42	128.79
100 Japanese Yen	104.12	101.20	99.03	98.43	97.99	98.00	99.47	100.04	98.03	98.12	99.20	98.63	98.69
1 SA Rand.....	7.41	7.32	7.49	7.63	7.76	7.45	7.39	7.57	7.44	7.23	7.10	7.31	7.45
USHS/KES.....	33.43	33.38	33.59	33.09	32.84	32.84	32.39	32.07	32.28	31.74	31.49	31.13	30.92
TSHS/KES.....	21.14	21.13	21.48	21.59	21.51	21.44	21.23	21.04	20.78	20.57	20.40	20.33	20.35

Source: Central Bank of Kenya

**Fig. 2: End of Month Mean Exchange rate of Kenya Shillings against Major Selected Currencies**



**Table 3: Interest rate (%)**

Month/Year	Average Yield Rates 91 – Days Treasury Bills	Central Bank Rate	Rates for Commercial Banks Loans and Advances (Weighted Average)	Overdraft Rates	Average Inter – Bank Deposit Rate	Inter – Bank Rates	Savings (Commercial Banks Rates)
<b>2021</b>							
January	6.92	7.00	12.00	11.43	6.31	5.12	2.73
February	6.90	7.00	12.02	11.52	6.46	4.49	3.35
March	7.03	7.00	12.05	11.61	6.46	5.23	3.48
April	7.10	7.00	12.08	11.66	6.30	5.12	2.66
May	7.15	7.00	12.06	11.57	6.30	4.62	2.55
June	7.03	7.00	12.02	11.18	6.37	4.63	2.55
July	6.64	7.00	12.09	11.44	6.34	4.17	2.51
August	6.57	7.00	12.12	11.38	6.30	3.10	2.64
September	6.83	7.00	12.10	11.34	6.34	4.73	2.57
October	6.95	7.00	12.12	11.33	6.39	5.30	2.58
November	7.10	7.00	12.15	11.41	6.43	4.97	2.60
December	7.26	7.00	12.16	11.45	6.50	5.02	2.55
<b>2022</b>							
January	7.32	7.00	12.12	11.57	6.53	4.36	2.55
February	7.28	7.00	12.17	11.63	6.61	4.72	2.56

Source; Central Bank of Kenya

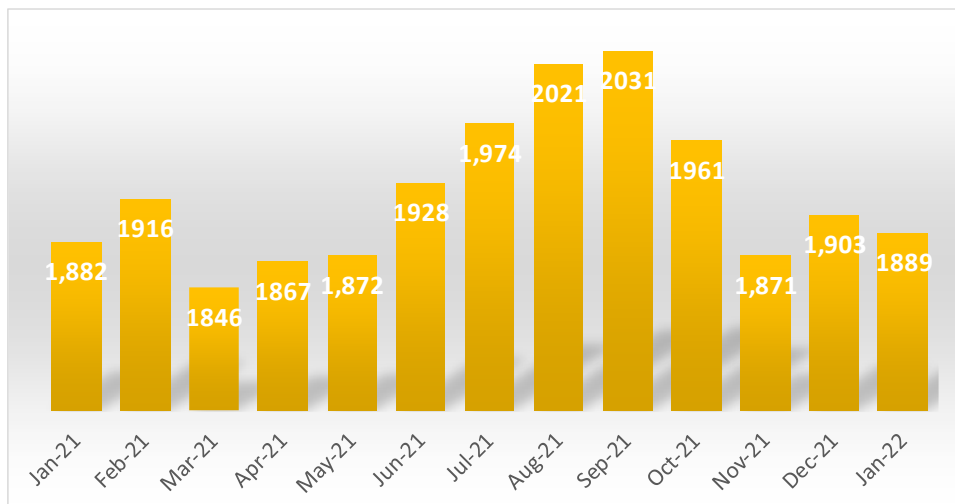
**Table 4: Nairobi Securities Exchange**

	Number of Equity Transactions	Number of Shares (Million)	Value of Shares (Million KSh)	NSE 20 Share Index
<b>2021</b>				
January.....	19,554	294	8,852	1,882
February.....	19,422	331	10,820	1,916
March.....	23,925	373	12,064	1,846
April.....	20,893	293	9,878	1,867
May.....	21,784	386	14,162	1,872
June.....	23,889	421	13,953	1,928
July.....	24,245	285	9,275	1,974
August .....	27,232	345	11,854	2,021
September.....	27,066	317	10,231	2,031
October.....	21,121	264	10,274	1,961
November.....	27,470	457	15,584	1,871
December.....	21,010	286	10,464	1,903
<b>2022</b>				
January.....	21,097	221	8,248	1,889
February.....	22,010	281	9,972	1,887

Source: Nairobi Securities Exchange Limited

Base Jan 1966=100

**Fig. 3: Nairobi Securities Exchange 20 Share Index**



**Table 5(a): Money Supply**

<b>KSh million</b>						
<b>As at end of month</b>	<b>Money (M1)*</b>	<b>Quasi – Money**</b>	<b>Total (M2)***</b>	<b>Foreign currency deposits</b>	<b>Broad Money (M3)****</b>	<b>% Change <sup>1</sup></b>
<b>2021</b>						
January	1,716,364	1,520,544	3,236,907	755,977	3,992,885	0.05
February	1,734,582	1,528,872	3,263,455	779,534	4,042,989	1.25
March	1,716,744	1,533,546	3,250,290	779,702	4,029,992	-0.32
April	1,718,771	1,559,275	3,278,045	762,790	4,040,835	0.27
May	1,726,768	1,567,399	3,294,167	745,442	4,039,609	-0.03
June	1,779,227	1,598,250	3,377,477	760,336	4,137,813	2.43
July	1,788,031	1,628,882	3,416,913	757,731	4,174,644	0.89
August	1,821,013	1,641,354	3,462,367	771,070	4,233,437	1.41
September	1,770,791	1,637,347	3,408,138	769,524	4,177,661	-1.32
October	1,827,519	1,609,542	3,437,061	773,851	4,210,912	0.80
November	1,822,003	1,613,301	3,435,304	798,700	4,234,004	0.55
December	1,848,086	1,583,477	3,431,563	803,661	4,235,224	0.03
<b>2022</b>						
January	1,793,436	1,592,596	3,386,032	793,259	4,179,291	-1.32
February	1,832,389	1,584,011	3,416,400	804,313	4,220,713	0.99

Source: Central Bank of Kenya

\* Currency in circulation less cash in banks plus all demand deposits except those of National & County government, Banks, non-residents and foreign currency deposits

\*\* All other deposits in commercial banks, except those of National government.

\*\*\*Broad money (M2) is the sum of M1, Quasi money in Banks and net Quasi money in NBFIs..

\*\*\*\* Broad Money (M3) includes M2 and Foreign currency deposits

$M2=(M1+QM-NBFIs)$

$M3=M2+FCD$

<sup>1</sup> percentage of M3 from previous month

**Table 5(b): Gross Foreign Exchange Reserves**

KSh Million*							
Month	Central Monetary Authority		Total	Foreign Assets		Gross Total	Net of Foreign Exchange Liabilities
	Central Bank	National Government**		Commercial Banks	NBFI		
<b>2021</b>							
January	909,624	2,252	<b>911,876</b>	537,245	242	<b>1,449,363</b>	753,438
February	892,240	2,246	<b>894,486</b>	553,047	85	<b>1,447,618</b>	718,473
March	882,726	2,205	<b>884,931</b>	559,497	62	<b>1,444,490</b>	693,232
April	879,858	2,200	<b>882,058</b>	545,891	84	<b>1,428,033</b>	648,885
May	880,715	2,208	<b>882,923</b>	524,380	81	<b>1,407,384</b>	615,406
June	1,098,287	2,205	<b>1,100,491</b>	515,950	67	<b>1,616,509</b>	785,986
July	1,081,471	2,204	<b>1,083,676</b>	493,585	94	<b>1,577,354</b>	753,443
August	1,040,532	2,222	<b>1,042,753</b>	506,518	632	<b>1,549,903</b>	708,318
September	1,100,336	2,211	<b>1,102,546</b>	492,433	418	<b>1,595,397</b>	664,073
October	1,073,932	2,234	<b>1,076,166</b>	509,261	202	<b>1,585,629</b>	633,206
November	1,053,212	2,236	<b>1,055,448</b>	472,090	317	<b>1,527,856</b>	583,588
December	1,071,610	2,247	<b>1,073,857</b>	532,699	398	<b>1,606,954</b>	592,331
<b>2022</b>							
January	1,009,992	2,243	<b>1,012,235</b>	474,732	260	<b>1,487,227</b>	488,035
February	984,530	2,250	<b>986,780</b>	502,091	934	<b>1,489,806</b>	473,599

Source: Central Bank of Kenya

\* Includes encumbered reserves

\*\*National Government includes reserve position in the Fund and deposits with Crown Agents.



**Table 6: Coffee Sales and Prices\***

Month	2019			2020***			2021***		
	QUANTITY (MT)	PRICE (\$ /kg)	PRICE (Ksh /kg)	QUANTITY (MT)	PRICE (\$ /kg)	PRICE (Ksh /kg)	QUANTITY (MT)	PRICE (\$ /kg)	PRICE (Ksh /kg)
January	4,166.77	4.46	452.57	3,048.63	4.34	438.95	3,824.34	6.34	697.01
February	5,723.84	4.49	449.47	4,409.60	4.24	427.28	5,325.48	6.06	664.49
March	4,057.03	2.97	298.47	4,845.46	4.06	421.92	4,317.75	4.96	544.14
April	5,307.40	2.01	203.37	2,242.47	2.75	294.70	2,196.29	4.04	435.74
May**	4,084.00	1.98	200.58	1,125.04	2.59	276.10	-	-	-
June**	2,020.80	1.89	191.97	-	-	-	501.79	5.10	550.70
July	671.60	1.91	196.94	1,310.43	3.32	357.53	1,277.97	6.23	674.11
August	1,646.63	2.10	216.51	1,208.67	4.86	525.29	1,479.13	6.26	683.88
September	1,521.79	2.24	232.60	1,912.58	4.47	484.47	1,889.41	6.03	664.37
October	2,540.68	2.51	259.85	1,328.52	4.85	526.80	999.10	6.05	670.88
November	1,116.76	3.24	331.71	1,318.42	5.20	568.36	3,538.50	6.92	775.27
December	770.82	4.29	435.44	1,666.58	5.98	660.07	2,815.88	6.98	789.20
<b>Annual</b>	<b>33,628.12</b>	<b>2.84</b>	<b>289.12</b>	<b>24,416.40</b>	<b>4.24</b>	<b>452.86</b>	<b>28,165.64</b>	<b>5.91</b>	<b>649.98</b>

Source: Coffee Directorate

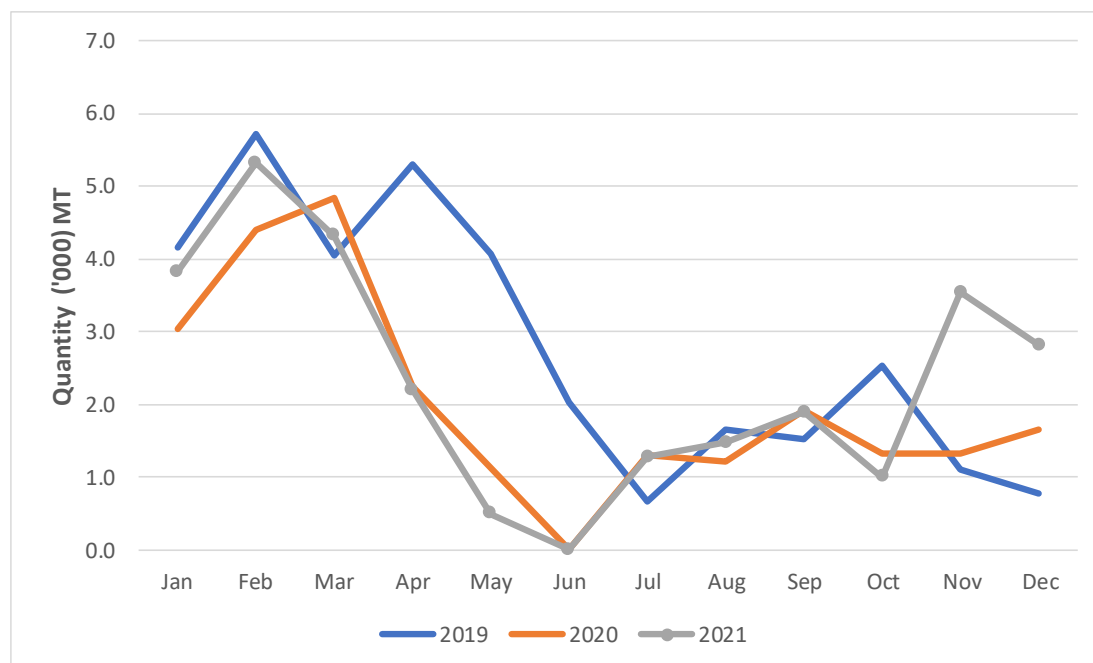
\* Auction Price

NB: MT denotes Metric Tonnes

\*\*\* Provisional

\*\* Nairobi Coffee Exchange was in recess in June 2020 and May 2021

**Fig. 4: Coffee Sales at the Nairobi Coffee Exchange**



**Table 7: Tea Production and Auction Prices**

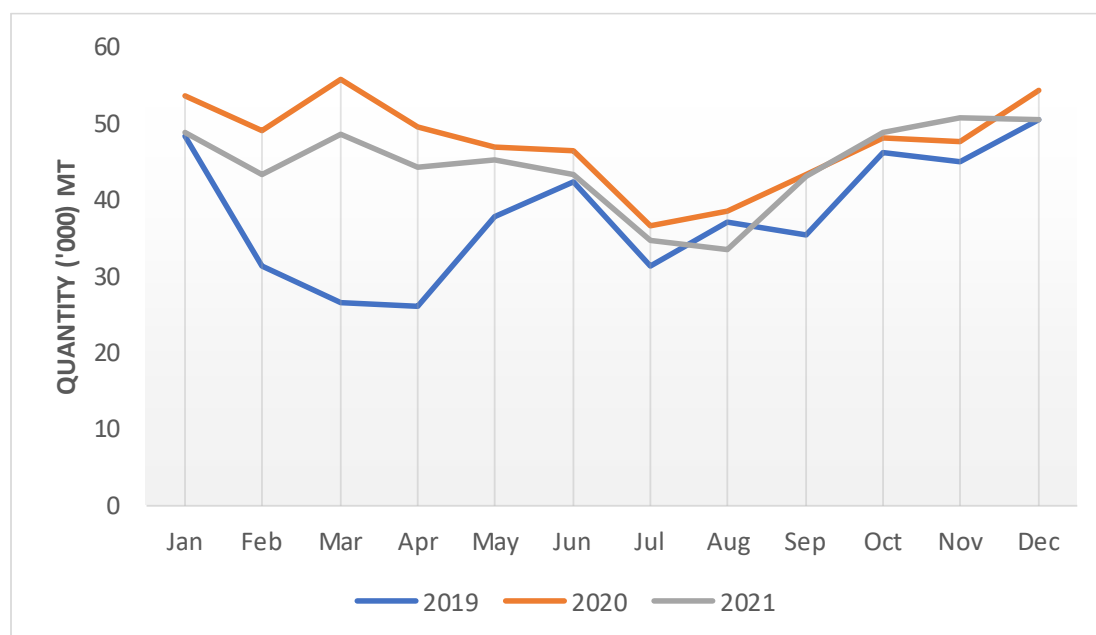
Months	2020			2021*		
	QUANTITY (MT)	PRICE (\$/Kg)	PRICE (KSh/Kg)	QUANTITY (MT)	PRICE (\$/Kg)	PRICE (KSh/Kg)
January	53,635.65	2.29	231.50	48,896.13	2.03	222.81
February	49,201.18	2.13	214.49	43,398.65	2.10	230.27
March	55,732.73	1.99	206.53	48,692.71	2.00	219.05
April	49,656.07	2.11	225.07	44,299.46	1.90	206.58
May	47,003.93	1.97	210.37	45,321.64	1.91	205.22
June	46,377.67	1.86	197.62	43,468.95	1.82	196.05
July	36,554.22	1.81	194.15	34,732.37	1.75	189.20
August	38,524.78	2.00	216.61	33,635.04	2.10	229.51
September	43,412.74	2.03	220.18	43,185.49	2.22	244.02
October	48,274.64	1.98	214.85	48,956.89	2.42	267.76
November	47,679.78	1.99	217.58	50,719.16	2.48	277.70
December	54,411.94	1.94	215.13	50,526.36	2.62	295.87
<b>Annual</b>	<b>570,465.34</b>	<b>2.01</b>	<b>213.67</b>	<b>535,832.84</b>	<b>2.11</b>	<b>232.00</b>

Source: Tea Directorate

MT denotes Metric Tonnes

\*Provisional

**Fig. 5: Tea Production**



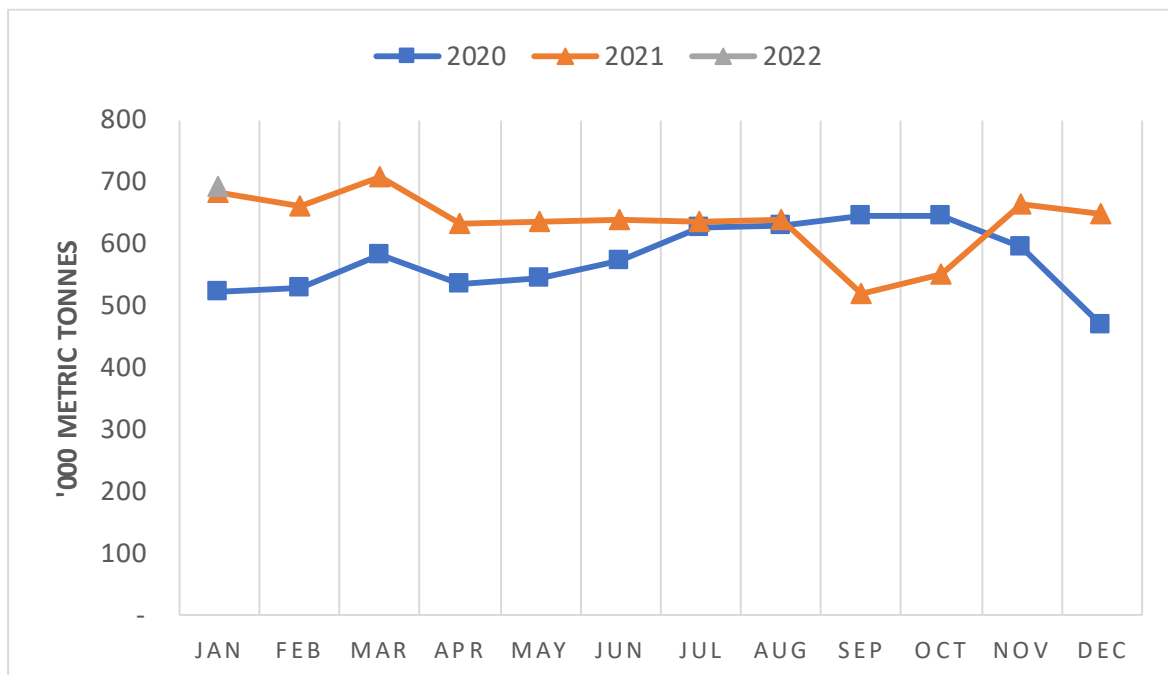
**Table 8: Cane Deliveries**

Month	'000 Metric Tonnes				
	2018	2019	2020	2021	2022
January	687.52	538.67	522.89	681.54	691.11
February	555.88	453.48	529.94	660.44	
March	445.17	456.17	583.14	709.46	
April	324.41	381.71	534.69	631.43	
May	266.43	348.04	544.36	636.46	
June	314.13	259.27	572.37	639.35	
July	378.60	266.97	625.61	636.55	
August	438.73	357.56	629.10	679.56	
September	445.69	397.52	645.31	517.93	
October	492.95	406.53	644.24	551.68	
November	491.96	357.45	594.18	663.71	
December	420.70	381.74	468.59	649.40	
<b>Total</b>	<b>5,262.16</b>	<b>4,605.10</b>	<b>6,894.40</b>	<b>7,657.50</b>	<b>691.11</b>

Source : Sugar Directorate

\* Provisional

**Fig. 6: Cane Deliveries**



**Table 9(a): Average Monthly Retail Prices for Dry Maize, 2020 (per Kg)**

Market Name	January	February	March	April	May	June	July	August	September	October	November	December
Kiambu	50.0	50.0	50.0	-	-	-	50.0	50.0	56.7	-	-	-
Limuru	45.7	45.0	43.3	-	-	-	50.0	43.8	43.3	39.4	37.5	-
Thika	42.5	40.0	43.3	-	-	-	45.0	36.3	21.3	41.0	50.0	47.5
Githurai	42.5	43.3	45.0	-	-	-	35.0	35.0	35.0	39.0	40.0	40.0
Gatundu	40.0	40.0	-	-	-	-	45.0	44.5	40.0	40.0	40.0	40.0
Kutus	43.5	40.2	-	-	-	-	-	-	33.3	37.1	36.4	36.4
Kerugoya	43.8	47.6	-	-	-	-	-	-	-	-	34.8	36.5
Muthithi	44.2	-	33.5	-	-	-	-	30.0	30.3	-	29.8	39.6
Makuyu	47.7	-	41.9	-	-	-	-	36.8	39.1	-	39.0	41.8
Kiriaini	44.0	-	33.3	-	-	-	-	36.7	33.7	35.4	-	38.7
Oi Kalou	56.7	62.5	65.0	62.5	60.0	55.0	50.0	50.0	50.0	45.0	50.0	47.5
Ndaragwa	36.7	43.8	37.5	35.0	49.2	48.8	51.0	-	-	-	75.0	45.0
Nyeri	47.7	47.1	47.6	-	-	-	-	-	35.9	40.1	37.2	39.5
Karatina	47.1	46.0	47.6	-	-	-	-	-	36.9	38.9	45.2	47.6
Nanyuki	56.2	53.4	46.0	-	-	-	-	-	-	-	-	-
Nyahururu	44.9	44.4	44.4	-	-	-	-	-	-	-	-	-
Ukunda	50.0	49.5	49.0	46.3	43.0	46.3	41.6	40.0	49.0	44.0	42.5	43.0
Kwale	48.0	50.0	50.0	42.5	41.0	47.0	43.0	40.0	47.0	41.0	40.0	47.8
Voi	-	-	-	-	-	-	-	-	-	-	40.0	40.0
Mpeketoni	40.0	-	-	-	-	-	-	-	-	-	-	-
Mkunguni	46.4	45.0	45.0	-	-	-	50.0	50.0	-	45.0	45.0	45.0
Mwembe Tayari	69.0	65.0	71.3	66.3	65.0	63.8	63.0	63.8	63.8	63.0	53.8	52.5
Majengo	66.0	68.8	81.7	-	-	-	-	-	60.0	63.0	61.7	60.0
Sega	70.0	65.0	60.0	70.0	62.0	67.5	62.0	63.8	62.5	68.0	66.3	60.0
Kongowea	50.0	51.3	46.3	45.0	45.0	45.0	45.0	43.8	41.3	45.0	45.0	41.3
Runyenjes	48.6	53.3	63.5	-	71.5	40.7	-	-	-	-	-	-
Embu Town	46.2	46.8	47.6	-	27.9	30.5	-	-	-	-	-	-
Iciara	48.1	59.2	65.2	-	29.1	29.5	-	-	-	-	-	-
Kiriiri	52.9	63.6	71.4	-	76.7	45.2	-	-	-	-	-	-
Siakago	44.2	55.6	71.4	-	-	-	-	-	-	-	-	-
Kalundu	-	30.0	30.0	30.0	35.0	35.0	33.0	32.5	32.5	33.0	40.0	-
Machakos Town	50.0	50.0	43.1	43.0	45.0	-	40.0	40.8	40.0	40.0	50.0	-
Tala	42.0	40.0	-	40.0	40.0	-	35.0	33.0	35.4	37.5	-	-
Maua	41.3	-	-	-	-	-	-	-	-	-	35.0	35.0
Kianjai	44.4	30.6	27.8	-	-	-	-	-	33.3	-	33.3	33.3
Gakoromere	51.4	42.6	33.3	-	-	-	-	-	36.1	38.9	38.9	38.9
Wote	42.0	-	30.0	-	-	35.0	35.0	35.0	35.0	35.0	35.0	35.0
Garissa Town	70.0	66.3	70.0	65.0	66.0	77.5	72.5	70.0	70.0	70.0	70.0	70.0
Wajir Town	100.0	-	100.0	-	-	-	-	100.0	100.0	100.0	100.0	100.0
Isiolo Town	50.0	50.0	50.0	-	-	-	-	-	-	-	38.8	40.0
Daraja Mbili	47.5	-	36.2	39.4	35.6	-	-	-	-	-	-	-
Kibirigo	41.4	-	-	-	-	-	-	-	-	-	-	-
Keroka	41.9	-	-	-	-	-	-	-	-	-	-	-
Riochanda	41.9	-	-	-	-	-	-	-	-	30.4	28.0	-
Nyabite	-	-	-	-	-	-	-	-	-	43.5	-	-
Kibuye	40.8	41.3	40.1	41.8	41.3	44.0	43.0	39.1	36.2	34.9	36.4	36.2
Ahero	39.3	37.6	40.1	41.7	42.4	43.3	41.2	33.8	34.2	33.9	34.7	34.7
Kiboswa	37.4	33.5	36.4	41.8	39.5	37.7	38.7	38.4	35.3	35.7	34.8	34.8
Sondu	39.7	37.5	38.8	44.5	43.1	42.3	42.4	34.4	34.8	34.2	34.8	34.6
Kegonga	31.7	23.0	-	-	-	-	-	-	-	-	-	29.3
Oyugis	-	-	34.7	44.0	42.4	40.0	34.5	33.0	32.0	28.0	28.0	28.5
Kehacha	35.8	26.0	-	-	-	-	-	-	-	-	25.6	26.2
Migori	44.2	38.2	-	-	-	-	-	-	-	23.7	30.1	29.6
Soko Mjinga	43.5	-	40.3	41.7	-	-	-	-	-	-	-	34.1
Lodwar	77.3	-	-	-	-	-	-	-	-	-	91.7	77.4
Kabarnet	35.0	-	-	-	-	-	44.4	39.9	33.5	30.0	30.0	30.0
Kimulot	44.0	44.0	-	-	-	-	-	-	-	37.5	33.0	32.0
Sotik	40.0	40.0	-	-	-	-	-	-	-	37.0	37.0	36.0
Bomet	42.0	40.0	-	-	-	-	-	-	-	36.0	38.0	36.0
Nakuru Town	43.3	45.0	45.0	-	-	-	-	41.5	57.5	45.0	43.3	40.0
Kapsabet	38.5	38.0	38.0	-	-	-	-	35.8	28.3	25.5	28.1	-
Chepsonoi	37.3	39.6	40.0	-	-	-	-	36.4	27.9	25.6	28.0	-
Mulot	44.0	40.0	-	-	-	-	-	-	-	33.5	31.5	32.0
Kitale	41.4	41.7	41.7	41.7	41.7	41.7	41.3	40.6	41.5	37.0	27.4	34.1
Endebess	34.1	32.8	33.3	32.8	33.3	-	-	-	-	-	-	-
Sibanga	42.8	41.5	38.5	35.0	40.3	-	-	-	-	-	-	-
Eldoret	-	40.0	40.0	40.0	40.0	43.8	49.0	42.5	40.0	38.0	36.3	30.0
Burn Forest	35.0	35.0	28.0	36.0	36.0	36.0	36.0	39.0	29.0	25.2	21.5	24.0
Turbo	-	35.0	35.6	38.1	35.0	38.1	46.0	42.5	40.0	35.5	30.0	30.0
Kipkaren	-	35.0	35.6	36.9	35.0	38.8	47.0	45.0	40.0	35.0	31.9	30.0
Iten	34.6	-	-	-	-	-	-	45.0	-	-	-	-
Kajiado	50.0	45.0	44.5	45.8	44.0	41.3	48.0	52.0	50.0	50.0	51.3	48.8
Bungoma Town	-	-	-	-	-	60.2	43.8	32.8	29.0	28.6	29.4	30.5
Bumala	-	-	-	-	-	-	76.7	76.3	75.0	70.0	70.0	75.0
Busia Town	-	-	-	-	-	-	81.7	78.8	75.0	70.0	71.3	72.5
Sio Port	-	-	-	-	-	-	80.0	77.5	77.5	70.0	70.0	76.3
Butere	-	-	33.0	41.7	34.3	39.1	30.7	28.0	25.7	25.2	26.0	26.7
Kakamega	-	-	39.5	42.3	41.9	36.9	33.5	26.4	29.3	29.6	30.7	31.0
Mumias	-	-	33.4	38.5	40.9	38.4	28.6	25.6	24.0	25.8	27.4	26.0
Mundeta	39.7	38.1	38.1	-	-	-	-	-	-	-	-	-
Cheptula	39.5	40.5	38.9	-	-	-	-	-	-	-	-	-
Mbale	37.6	37.3	38.1	-	-	-	-	-	-	-	-	-
Muthurwa	-	-	-	-	-	-	-	-	-	-	47.6	47.6
Gikomba	-	-	-	-	-	-	-	-	38.1	-	47.6	47.6
Korokocho	-	-	-	-	-	-	42.1	-	36.4	-	36.4	-
Kayole	-	-	-	-	-	-	44.4	-	40.0	38.1	40.0	38.1
<b>Total</b>	<b>44.8</b>	<b>44.6</b>	<b>43.6</b>	<b>43.5</b>	<b>44.6</b>	<b>44.3</b>	<b>44.5</b>	<b>42.1</b>	<b>41.4</b>	<b>39.4</b>	<b>40.5</b>	<b>40.4</b>

**Table 9(b): Average Monthly Retail Prices for Dry Maize, 2021 (per Kg)**

Market	January	February	March	April	May	June	July	August	September	October	November	December
Kiambu	-	40.0	40.0	42.5	51.3	50.0	50.0	50.0	46.0	40	-	-
Limuru	35.0	40.6	42.5	-	-	40.0	40.0	40.0	48.3	40	-	-
Thika	50.0	47.5	40.8	40.0	46.0	40.0	40.0	40.0	44.0	-	-	-
Githurai	41.0	42.5	42.0	42.5	41.0	47.5	51.0	50.0	48.3	50	50	50.0
Gatundu	43.0	46.3	46.0	46.3	45.0	47.5	50.0	48.8	50.0	40	-	-
Kutus	43.5	41.8	34.3	34.8	34.8	33.7	42.6	28.3	32.6	34.8	34.8	-
Kerugoya	42.0	34.4	34.8	31.3	34.8	37.7	45.7	50.7	41.7	46.3	45.5	-
lega	20.0	-	-	-	-	-	-	-	-	-	-	-
Muthithi	35.0	35.3	-	-	-	28.6	30.4	31.0	-	31.3	-	35.0
Makuyu	32.0	34.2	40.7	-	37.7	43.1	36.6	38.7	-	40	-	-
Kiriaini	37.6	33.7	-	-	-	35.7	34.4	33.7	-	34.5	-	-
Engineer	48.2	50.0	48.6	50.0	51.9	50.0	50.0	50.0	47.5	45	-	-
Oi Kalou	50.0	50.0	48.3	52.5	50.0	42.5	40.0	40.0	-	-	-	-
Ndaragwa	-	-	-	-	50.0	45.0	-	-	-	-	-	-
Nyeri	40.6	46.5	48.3	48.8	48.1	48.2	47.6	-	-	47.6	42.9	-
Karatina	45.7	48.2	40.9	34.2	38.1	41.5	40.9	-	-	45	44.3	-
Nanyuki	36.3	38.2	39.1	41.0	44.9	44.9	45.7	45.5	49.4	51.9	50.9	50.8
Nyahururu	39.8	40.8	40.4	43.1	43.0	44.1	46.7	46.1	51.5	48.1	43.4	42.9
Ukunda	48.2	-	50.0	47.5	44.0	47.5	45.0	-	-	50	-	-
Kwale	47.9	-	50.0	43.8	42.0	42.5	45.0	-	-	36	-	-
Voi	37.5	36.7	38.8	-	-	-	-	-	-	-	40	40.0
Mpeketoni	40.0	35.0	-	-	-	-	40.0	-	40.0	40	40	-
Mkunguni	51.1	45.0	45.0	45.0	45.0	47.5	55.0	-	65.7	60	60	-
Mwembe Tayari	50.0	55.0	55.0	55.0	56.0	55.0	60.0	-	51.4	60	70	70.0
Majengo	50.0	55.0	52.5	51.3	58.0	58.8	57.5	-	60.0	50	50	55.0
Mackinon	-	-	-	-	-	-	-	-	100.0	84	100	100.0
Kongowea	43.0	43.8	45.0	45.0	40.0	40.0	45.0	-	40.0	41.4	40	40.0
Hola	40.0	40.0	40.0	40.0	40.0	40.0	40.0	-	-	46.7	40	-
Runyenjes	32.4	35.6	36.5	37.1	38.9	38.3	37.1	38.6	43.4	43.8	43.7	42.9
Embu Town	29.0	35.9	37.2	38.6	38.4	37.4	33.3	39.2	43.9	43.4	45	45.0
Iciara	33.4	35.6	37.9	37.2	37.4	37.1	36.0	37.4	42.8	40.7	38.6	42.5
Kiritiri	31.7	39.2	36.6	39.2	38.4	38.6	39.6	45.9	42.9	40.4	34.2	35.7
Siakago	37.9	37.5	39.0	36.3	36.1	35.0	40.0	42.9	42.4	43.7	35.8	34.2
Kalundu	35.0	33.8	35.0	30.0	30.0	32.5	35.0	35.0	35.0	35	35	35.0
Machakos Town	40.0	40.0	40.0	40.0	40.0	40.0	40.0	40.0	40.0	40	-	-
Tala	36.4	35.0	35.0	35.0	35.0	35.0	35.0	35.0	35.0	35	-	-
Maua	37.0	35.0	35.0	-	35.0	35.0	35.0	35.0	37.9	44.4	44.4	44.4
Kianjai	38.4	36.4	33.3	33.3	33.3	33.3	38.9	38.9	37.2	38.9	38.9	38.9
Gakoromere	38.9	35.0	32.2	33.8	35.0	30.0	33.0	32.5	38.9	38.9	-	-
Chuka Town	48.6	45.4	43.4	52.7	43.8	52.6	55.9	52.6	54.1	60.1	-	-
Kathwana	-	-	-	-	-	-	-	-	-	47.4	-	-
Wote	35.0	34.7	32.8	34.3	32.9	35.0	35.0	35.0	35.0	35.6	40	40.0
Garissa Town	70.0	70.0	-	-	70.0	65.0	65.0	65.0	62.1	68.3	-	-
Marsabit Town	59.0	55.8	52.5	50.0	54.0	57.5	53.2	50.0	55.0	-	-	-
Isiolo Town	44.4	60.0	47.5	-	53.3	-	-	35.0	38.8	40	-	-
Daraja Mbili	32.1	29.0	29.8	28.5	32.0	31.3	33.9	34.3	34.1	33.9	36.1	37.1
Riochanda	31.0	28.3	-	-	-	-	-	-	-	-	-	-
Nyabite	31.0	32.6	32.6	32.8	31.8	34.0	31.6	30.1	32.6	33	-	-
Kibuye	34.3	31.4	34.8	34.8	34.8	49.7	39.3	34.8	34.8	34.9	34.8	-
Ahero	34.6	35.3	34.8	34.7	34.9	35.1	34.8	34.9	34.8	35.2	-	-
Kiboswa	34.8	34.1	39.9	32.6	33.0	48.3	34.8	34.8	34.8	33.3	34.8	-
Sondu	34.8	35.3	35.4	34.1	35.0	34.8	35.3	34.8	35.8	34.7	34.8	-
Siaya	40.2	36.9	33.3	-	30.3	35.9	-	-	-	-	-	-
Kegonga	18.2	22.8	24.2	27.5	25.8	26.0	19.2	22.0	26.7	28.2	27.3	-
Oyugis	25.0	23.0	-	27.0	26.0	27.6	29.2	-	-	-	-	-
Kehacha	19.5	25.9	25.2	28.0	27.3	28.0	21.0	24.2	28.5	29.1	28	-
Migori	23.1	26.2	27.5	28.1	28.4	29.3	25.4	25.3	32.6	33.8	32.7	-
Soko Mjinga	33.3	27.6	30.0	35.6	-	32.7	31.3	32.0	29.1	32	-	-
Lodwar	42.6	45.2	90.9	38.5	42.8	40.9	43.2	-	-	48.5	42.6	47.7
Kabarnet	30.0	30.0	30.0	33.8	32.5	35.0	35.0	35.0	35.0	38.3	-	-
Kimulot	33.6	32.2	32.3	36.5	37.1	37.5	37.2	33.3	29.8	29.6	-	-
Sotik	36.0	34.4	32.0	34.5	35.8	35.6	35.4	38.0	30.8	31.1	-	-
Bomet	32.4	36.3	37.5	37.5	37.1	34.6	35.8	35.9	30.7	34.5	35.7	-
Muthurwa Narok	29.6	31.5	-	-	-	-	-	-	-	-	-	-
Nakuru Town	52.5	45.0	45.0	45.0	-	62.5	52.5	48.3	50.0	47.9	-	-
Kapsabet	28.1	28.6	31.8	30.6	32.2	34.2	35.8	36.1	35.8	34	33.3	-
Chepsonoi	28.6	28.3	33.4	29.9	31.5	33.0	35.0	35.7	35.5	34.1	-	-
Engare	28.6	29.1	28.0	-	-	-	-	-	-	-	-	-
Kilgoris	32.2	29.8	25.0	-	-	-	30.0	28.0	29.0	28.8	28.5	28.3
Mulot	32.4	32.9	33.0	34.0	34.0	34.0	34.7	32.0	28.1	28.9	-	-
Kitale	33.8	31.3	44.5	44.3	31.0	31.7	28.8	26.8	-	29.5	26	-
Makutano	26.8	28.2	32.8	-	37.1	40.0	-	-	-	-	-	-
Eldoret	30.0	35.0	35.0	35.0	39.0	40.0	36.0	40.0	40.0	35	-	-
Burn Forest	25.2	27.0	27.0	-	27.0	28.5	-	-	-	28	-	-
Turbo	30.0	30.0	33.1	35.0	34.5	35.0	35.0	37.5	38.5	35	-	-
Kipkaren	30.0	30.0	32.5	34.4	34.0	35.0	35.0	38.8	36.0	35	-	-
Iten	45.0	-	-	-	-	39.4	-	40.0	40.0	40	40	13.3
Kajiado	50.0	49.2	45.0	46.9	48.0	47.5	50.0	50.0	50.0	50	50	48.8
Bungoma Town	29.7	30.6	29.2	32.1	32.9	34.1	33.4	31.2	29.1	30.4	33	33.0
Bumala	71.0	67.0	68.3	65.0	68.8	71.3	84.0	78.0	67.5	76.4	83.8	90.0
Busia Town	68.0	61.0	68.3	70.0	67.5	71.3	81.0	80.0	40.0	35.6	87	90.0
Sio Port	71.0	64.0	65.0	65.0	66.3	72.5	78.0	80.0	37.5	78	70	85.0
Butere	28.8	27.5	27.8	31.1	36.2	33.0	35.0	36.7	28.7	26.8	-	-
Kakamega	29.5	29.2	29.8	32.3	35.5	35.7	34.4	34.7	33.5	31.9	-	-
Mumias	28.3	28.1	28.8	32.4	37.9	34.3	33.4	33.8	32.9	30.9	-	-
Mbale	-	-	-	-	-	-	33.3	-	34.2	36.6	32.1	31.6
Muthurwa	47.6	-	-	-	-	-	-	-	-	-	-	-
Gikomba	47.6	46.5	-	-	-	-	-	-	-	-	-	-
Korokocho	-	-	38.9	-	-	-	-	-	-	-	-	-
Kayole	33.3	-	38.9	-	-	-	-	-	-	-	-	-
<b>Total</b>	<b>37.3</b>	<b>37.4</b>	<b>37.8</b>	<b>37.9</b>	<b>37.9</b>	<b>40.0</b>	<b>39.4</b>	<b>39.0</b>	<b>39.3</b>	<b>40.7</b>	<b>44.4</b>	<b>46.2</b>

**Table 9(C): Average Monthly Retail Prices for Dry Beans, 2020 (per Kg)**

Market Name	January	February	March	April	May	June	July	August	September	October	November	December
Kiambu	88.3	-	101.1	-	-	-	105.3	109.7	113.3	-	-	-
Limuru	91.6	97.0	94.3	-	-	-	-	-	70.8	95.0	95.0	-
Thika	85.2	88.3	94.3	-	-	-	101.7	98.3	103.3	99.0	94.2	90.0
Githurai	82.4	76.1	78.9	-	-	-	97.5	102.2	105.0	99.5	95.0	95.0
Gatundu	107.4	111.7	-	-	-	-	99.3	95.0	93.3	94.0	95.0	95.0
Kutus	72.2	75.0	-	-	-	-	-	-	81.8	90.4	91.3	87.0
Kerugoya	78.2	86.4	-	-	-	-	-	-	-	-	77.2	80.0
Muthithi	65.9	-	69.5	-	-	-	-	74.2	75.1	-	83.5	79.3
Makuyu	66.7	-	66.8	-	-	-	-	73.3	87.6	-	92.0	87.9
Kiriani	67.2	-	68.4	-	-	-	-	78.5	81.8	93.5	-	79.0
Oi Kalou	61.9	59.5	60.0	60.0	60.0	74.4	61.0	55.0	51.7	53.3	80.0	103.3
Ndaragwa	50.0	58.8	95.7	95.0	101.8	84.6	68.2	-	-	-	120.0	111.0
Nyeri	101.7	108.1	89.3	-	-	-	-	-	105.2	113.0	105.3	96.2
Karatina	98.5	105.3	102.9	-	-	-	-	-	108.3	120.6	128.0	124.4
Nanyuki	124.0	113.7	111.1	-	-	-	-	-	-	-	-	-
Nyahururu	107.7	111.1	109.9	-	-	-	-	-	-	-	-	-
Ukunda	105.0	100.0	100.0	80.0	66.0	85.0	80.0	62.5	82.5	77.0	72.5	78.8
Kwale	100.0	100.0	100.0	80.0	64.0	90.0	80.0	60.0	77.5	80.0	80.0	82.5
Voi	-	-	-	-	-	-	-	-	-	-	108.8	110.0
Mpeketoni	100.0	-	-	-	-	-	-	-	-	-	-	-
Mkunguni	114.5	110.0	110.0	-	-	-	120.0	120.0	-	115.0	112.5	111.3
Mwembe Tayari	144.0	147.5	162.5	150.0	158.0	132.5	136.0	135.0	125.0	126.0	127.5	130.0
Majengo	119.0	120.0	108.0	100.0	100.0	100.0	100.0	100.0	103.3	98.0	106.7	115.0
Mackinon	120.0	120.0	120.0	120.0	120.0	-	120.0	120.0	120.0	120.0	120.0	120.0
Sega	111.7	117.5	120.0	102.5	116.0	115.0	112.0	112.5	107.5	110.0	115.0	128.0
Kongowea	99.0	91.3	78.8	105.0	110.0	102.5	100.0	87.5	85.0	90.0	100.0	97.5
Hola	-	-	-	-	-	-	-	-	-	120.0	120.0	-
Garsen	-	-	-	-	-	-	-	-	100.0	100.0	100.0	100.0
Runyenjes	75.3	98.3	116.3	-	107.0	97.6	-	-	-	-	-	-
Embu Town	130.6	114.6	95.2	-	100.1	95.2	-	-	-	-	-	-
Iciara	128.4	140.7	146.4	-	111.2	102.9	-	-	-	-	-	-
Kiritiri	103.4	114.0	119.0	-	101.8	95.6	-	-	-	-	-	-
Siakago	87.6	95.3	93.1	-	-	-	-	-	-	-	-	-
Kalundu	-	105.0	105.0	106.3	114.0	113.8	108.0	100.0	103.8	90.5	105.0	-
Machakos Town	100.0	100.0	85.0	88.0	100.0	-	120.0	111.7	112.9	116.0	120.0	-
Tala	82.0	70.0	-	70.0	70.0	-	100.0	90.0	100.0	115.0	-	-
Maua	90.0	-	-	-	-	-	-	-	-	-	80.0	80.0
Kianjai	79.2	72.2	72.2	-	-	-	-	-	77.8	-	88.9	84.7
Gakromere	75.0	80.0	80.0	-	-	-	-	-	80.0	90.0	90.0	90.0
Wote	113.3	-	87.5	-	-	100.0	100.0	100.0	100.0	100.0	100.0	100.0
Garissa Town	102.7	103.3	103.3	113.3	125.3	126.7	125.7	126.7	126.7	124.0	113.3	111.7
Wajir Town	120.0	-	120.0	-	-	-	-	120.0	120.0	120.0	120.0	120.0
Isiolo Town	85.0	80.0	80.0	-	-	-	-	-	-	-	95.0	85.0
Daraja Mbili	94.0	-	115.2	110.9	120.5	-	-	-	-	-	-	-
Kibirigo	89.7	-	-	-	-	-	-	-	-	-	-	-
Keroka	83.3	-	-	-	-	-	-	-	-	-	-	-
Riochanda	75.0	-	-	-	-	-	-	-	-	90.9	87.5	-
Nyabite	-	-	-	-	-	-	-	-	-	138.7	-	-
Kibuye	75.7	75.4	77.9	80.6	83.3	74.9	90.0	79.2	101.4	100.0	107.8	109.0
Ahero	75.5	78.3	79.9	82.6	86.6	86.1	93.0	82.0	103.3	103.5	108.6	108.8
Kiboswa	75.1	63.9	74.5	77.4	77.1	80.9	77.5	78.6	96.5	97.9	105.7	108.3
Sondu	77.0	78.3	79.3	79.2	82.4	84.8	95.7	82.6	104.3	104.3	105.3	104.5
Kegonga	91.0	84.0	-	-	-	-	-	-	-	-	-	84.2
Oyugis	-	-	106.2	139.1	114.4	110.0	92.5	76.0	76.0	82.0	78.0	99.6
Kehacha	83.5	88.0	-	-	-	-	-	-	-	-	86.4	88.0
Migori	109.8	110.5	-	-	-	-	-	-	-	115.5	120.3	105.4
Soko Mjinga	96.1	-	98.1	108.5	-	-	-	-	-	-	-	90.3
Lodwar	98.4	-	-	-	-	-	-	-	-	-	83.3	91.7
Kabarnet	91.7	-	-	-	-	-	120.0	105.0	115.0	119.0	110.0	100.0
Kimulot	79.0	76.0	-	-	-	-	-	-	-	83.5	85.5	84.0
Sotik	78.9	76.3	-	-	-	-	-	-	-	96.2	90.9	93.7
Bomet	83.3	83.3	-	-	-	-	-	-	-	73.1	108.7	111.5
Nakuru Town	60.0	60.0	60.0	-	-	-	-	67.1	60.0	60.0	64.4	60.0
Kapsabet	98.7	94.8	111.2	-	-	-	-	112.7	113.7	116.4	111.1	-
Chepsonoi	98.8	97.7	83.3	-	-	-	-	113.3	115.9	116.0	114.9	-
Mulot	76.3	76.9	-	-	-	-	-	-	-	78.1	75.0	73.1
Kitale	70.6	72.1	72.6	88.9	82.3	103.6	95.6	95.8	103.7	103.6	81.7	90.3
Endebess	50.9	59.9	63.9	64.2	66.7	-	-	-	-	-	-	-
Sibanga	62.5	63.7	67.8	77.7	68.8	-	-	-	-	-	-	-
Eldoret	-	122.5	125.0	125.0	133.0	133.8	138.0	128.8	108.8	132.5	132.5	132.5
Burn Forest	130.3	136.4	131.8	143.2	140.9	131.8	140.9	136.4	134.1	132.7	138.6	129.5
Turbo	-	110.0	111.3	125.0	144.0	142.5	140.0	128.8	106.3	134.0	135.0	133.8
Kipkaren	-	116.3	125.0	126.3	145.0	140.0	140.0	128.0	107.5	131.0	140.0	137.5
Iten	100.0	-	-	-	-	-	-	100.0	-	-	-	-
Kajiado	94.7	106.7	113.3	113.3	113.3	113.3	117.3	116.7	115.0	112.0	114.2	114.2
Bungoma Town	-	-	-	-	-	117.7	97.2	99.7	103.0	91.6	91.6	91.9
Bumala	-	-	-	-	-	-	-	-	-	-	-	135.0
Busia Town	-	-	-	-	-	-	-	-	-	-	-	125.0
Sio Port	-	-	-	-	-	-	-	-	-	-	-	132.5
Butere	-	-	119.3	123.8	107.8	108.3	122.2	126.7	81.9	102.2	100.6	96.7
Kakamega	-	-	162.0	175.9	150.3	136.1	114.9	97.3	91.2	90.4	85.8	86.5
Mumias	-	-	127.9	147.1	119.7	110.0	108.9	116.9	104.9	102.3	106.1	104.4
Mundeta	90.9	92.0	90.9	-	-	-	-	-	-	-	-	-
Cheptula	90.9	97.0	95.5	-	-	-	-	-	-	-	-	-
Mbale	100.0	106.1	98.5	-	-	-	-	-	-	-	-	-
Muthurwa	-	-	-	-	-	-	-	-	-	-	104.3	104.3
Gikomba	-	-	-	-	-	-	-	-	72.7	-	104.3	104.3
Korokocho	-	-	-	-	-	-	80.0	-	66.7	-	75.0	-
Kayole	-	-	-	-	-	-	80.0	-	80.0	80.0	80.0	72.7
<b>Total</b>	<b>89.1</b>	<b>91.8</b>	<b>96.2</b>	<b>104.6</b>	<b>104.7</b>	<b>103.3</b>	<b>99.2</b>	<b>95.8</b>	<b>96.6</b>	<b>99.4</b>	<b>99.9</b>	<b>100.6</b>

**Table 9(d): Average Monthly Retail Prices for Dry Beans, 2021 (per Kg)**

Market	January	February	March	April	May	June	July	August	September	October	November	December
Kiambu	-	107.8	106.7	107.5	100.0	100.8	111.7	104.1	108.0	106.7	-	-
Limuru	102.0	96.3	97.5	-	-	105.0	105.0	100.0	88.3	95.0	-	-
Thika	107.7	96.7	96.9	96.7	101.0	96.7	97.3	100.8	105.1	-	-	-
Githurai	103.0	90.6	100.0	101.3	98.0	99.0	103.3	102.2	100.0	100.6	99.2	100.0
Gatundu	93.3	92.5	93.3	94.2	93.3	93.3	93.4	100.7	98.3	93.3	-	-
Kutus	78.5	75.4	77.8	83.3	83.3	76.0	75.0	56.3	60.4	53.3	50	-
Kerugoya	88.6	66.3	74.7	81.8	81.8	74.9	90.0	78.9	69.9	67.3	68.1	-
Muthithi	89.7	77.8	-	-	-	-	79.1	66.6	-	74.7	-	-
Makuyu	83.9	81.3	42.2	-	95.1	71.1	86.7	88.1	-	87.0	-	-
Kiriaini	90.5	91.1	-	-	-	87.0	83.8	67.3	-	76.6	-	-
Engineer	108.3	116.2	108.6	107.4	110.8	104.6	100.0	100.0	107.1	112.0	-	-
OI Kalou	113.3	101.7	102.2	110.0	111.7	117.5	110.0	106.7	-	-	-	-
Ndaragwa	-	-	-	-	100.0	120.0	-	-	-	-	-	-
Nyeri	101.4	108.2	112.0	108.8	104.2	112.4	113.8	-	-	101.7	115	-
Karatina	125.4	119.2	108.3	100.4	104.0	107.3	109.6	-	-	86.7	101.5	-
Nanyuki	105.7	108.3	110.6	114.1	119.1	122.5	123.1	121.2	120.7	123.7	127.6	127.0
Nyahururu	109.5	113.8	115.0	117.2	112.0	117.9	117.1	111.4	108.2	116.0	104.6	104.8
Ukunda	100.0	-	100.0	85.0	80.0	78.8	80.0	-	-	130.0	-	-
Kwale	106.7	-	100.0	85.0	80.0	80.0	80.0	-	-	-	-	-
Voi	110.0	110.0	110.0	-	-	-	-	-	-	-	110	88.9
Mpeketoni	101.7	100.0	-	-	-	-	100.0	-	100.0	100.0	100	-
Mkunguni	115.3	112.0	108.8	110.0	110.0	107.5	115.0	-	120.0	120.0	120	-
Mwembe Tayari	122.0	120.0	120.0	120.0	128.0	130.0	130.0	-	93.3	134.0	130	150.0
Majengo	124.0	105.0	110.0	130.0	108.0	115.0	120.0	-	100.0	120.0	120	120.0
Mackinon	120.0	101.7	100.0	110.0	114.7	120.0	120.0	120.0	125.7	136.0	128	140.0
Sega	126.0	110.0	120.0	127.5	118.0	120.0	120.0	-	117.5	120.0	120	125.0
Kongowea	94.0	97.5	100.0	100.0	108.0	110.0	110.0	-	90.0	93.6	90	90.0
Hola	120.0	120.0	120.0	120.0	120.0	120.0	120.0	120.0	120.0	120.0	120	-
Garsen	100.0	100.0	100.0	100.0	100.0	100.0	100.0	100.0	100.0	100.0	100	-
Runyenjes	88.7	89.7	94.0	97.6	93.2	97.7	102.0	95.2	97.0	96.2	96.4	71.4
Embu Town	99.3	88.1	86.8	95.1	96.2	101.2	92.4	105.0	103.6	99.4	89.1	92.5
Iciara	96.7	89.3	90.4	90.2	93.1	106.6	95.2	98.8	121.3	97.9	98.9	97.5
Kiritiri	91.9	81.4	97.6	88.7	90.5	92.6	92.4	106.0	114.3	96.4	97.6	95.2
Siakago	93.5	80.2	84.9	90.3	91.5	85.7	89.5	106.0	116.7	94.9	92.4	95.2
Kalundu	108.3	110.8	112.0	110.0	110.0	90.0	90.0	101.3	110.0	106.1	101.5	95.0
Machakos Town	106.7	110.0	100.0	100.0	110.0	110.0	108.0	100.0	100.0	100.0	-	-
Tala	110.0	100.0	100.0	100.0	100.0	100.0	94.0	80.0	80.0	81.3	-	-
Maua	80.0	80.0	80.0	-	90.0	90.0	88.0	80.0	91.7	100.0	92.6	100.0
Kianjai	80.0	81.9	92.6	100.0	100.0	100.0	88.9	88.9	88.9	88.9	88.9	88.9
Gakoromere	90.0	90.0	92.5	92.5	96.0	85.0	84.0	90.0	100.0	84.4	-	-
Chuka Town	-	111.1	158.3	125.0	111.1	125.0	111.1	111.1	110.4	122.2	-	-
Kathwana	-	-	-	-	-	-	-	-	-	60.0	-	-
Wote	100.0	100.0	100.0	100.0	97.5	109.2	100.0	91.4	90.0	103.8	110	100.0
Garissa Town	106.7	106.7	-	-	106.7	106.7	106.7	106.7	106.7	106.7	-	-
Marsabit Town	106.0	103.3	115.0	112.5	110.0	120.0	120.0	115.0	120.0	-	-	-
Isiolo Town	91.1	100.0	93.8	-	66.7	-	-	95.0	100.0	100.0	-	-
Daraja Mbili	104.7	102.9	107.4	108.7	100.0	103.3	93.8	90.9	103.1	96.3	107.1	102.2
Riochanda	88.4	100.0	-	-	-	-	-	-	-	-	-	-
Nyabite	102.2	115.2	120.0	133.7	114.3	105.8	94.2	102.9	104.2	132.5	-	-
Kibuye	111.3	114.6	110.9	109.4	110.0	129.8	116.8	111.5	111.7	107.8	108.3	-
Ahero	108.8	116.4	108.3	106.9	111.0	109.2	109.7	110.7	108.1	105.7	-	-
Kiboswa	108.3	114.1	105.3	104.2	105.7	143.5	109.5	109.4	109.4	102.4	-	-
Sondu	104.9	114.3	104.1	105.7	107.2	110.7	108.7	110.4	107.2	107.5	-	-
Siaya	78.3	98.2	96.3	-	89.6	86.5	-	-	-	-	-	-
Kegonga	95.2	105.3	106.8	106.2	105.0	94.6	82.3	87.3	92.4	97.4	103	-
Oyugis	109.0	100.1	-	110.0	108.1	105.3	107.7	-	-	-	-	-
Kehacha	93.0	104.4	107.6	108.6	111.0	97.2	86.1	85.7	93.6	99.2	104.7	-
Migori	124.9	104.0	120.5	117.6	111.4	106.5	99.1	97.8	107.6	109.1	108.7	-
Soko Mjinga	91.5	84.1	95.8	92.6	-	107.0	108.3	108.1	88.7	86.6	-	-
Lodwar	96.6	100.0	125.0	83.3	83.6	87.5	101.8	-	-	81.0	87.5	83.3
Kabarnet	109.4	113.3	100.0	115.0	120.0	101.4	100.0	120.0	100.0	99.1	-	-
Kimulot	96.0	86.7	87.7	93.9	89.3	73.7	74.3	72.7	75.2	77.5	-	-
Sotik	95.1	94.4	97.5	82.8	90.8	87.1	83.7	69.6	66.7	75.8	-	-
Bomet	86.2	89.8	107.9	94.4	92.8	100.2	96.2	62.2	93.0	107.0	105.6	-
Muthurwa Narok	112.0	98.7	-	-	-	-	-	-	-	-	-	-
Nakuru Town	60.0	60.0	60.0	60.0	-	60.0	70.0	103.3	93.3	88.9	-	-
Kapsabet	114.4	119.0	120.2	115.1	113.8	106.4	100.8	100.5	109.1	95.2	100	-
Chepsonoi	117.0	121.8	114.9	110.5	106.8	106.7	106.5	109.8	115.1	100.0	88.9	-
Engare	75.5	85.0	95.8	-	-	-	-	-	-	-	-	-
Kilgoris	58.7	60.0	60.0	-	-	-	89.1	94.0	96.6	84.9	76	75.4
Mulot	74.6	81.2	78.2	70.6	73.9	70.5	72.2	66.7	71.7	75.9	-	-
Kitale	104.3	115.6	107.0	93.9	106.7	93.2	99.3	73.8	-	81.0	104.2	-
Makutano	88.8	148.0	127.7	-	96.3	80.0	-	-	-	-	-	-
Eldoret	138.0	138.8	135.0	138.8	139.0	140.0	139.0	131.3	134.0	130.0	-	-
Burn Forest	132.7	134.1	134.1	-	134.1	136.4	-	-	-	113.6	-	-
Turbo	135.0	133.8	132.5	127.5	135.0	137.5	129.0	126.3	127.0	125.0	-	-
Kipkaren	138.0	135.0	132.5	138.8	135.0	136.3	134.0	131.3	127.0	125.0	-	-
Iten	90.0	-	-	-	-	118.8	-	110.0	110.0	110.0	110	90.0
Kajiado	105.2	109.5	109.4	107.1	109.8	113.3	114.7	116.6	113.3	114.8	115.3	117.3
Bungoma Town	98.5	91.5	92.0	92.1	88.7	83.4	78.5	82.2	78.1	89.4	83.4	75.0
Bumala	140.0	124.0	131.7	140.0	137.5	127.5	120.0	150.0	235.0	235.0	-	-
Busia Town	132.0	142.0	131.7	125.0	127.5	142.5	120.0	120.0	130.0	115.2	-	-
Sio Port	130.0	134.0	130.0	130.0	125.0	122.5	98.0	106.0	122.5	240.0	-	-
Butere	105.1	110.2	121.4	123.1	127.9	109.9	110.7	110.0	117.3	118.4	-	-
Kakamega	95.3	103.9	121.9	125.0	128.2	126.7	104.2	107.0	107.6	112.0	-	-
Mumias	116.3	112.5	114.7	130.9	133.8	119.1	117.3	110.1	104.9	106.4	-	-
Mbale	-	-	-	-	-	-	136.4	-	139.8	143.2	147.5	136.4
Muthurwa	104.3	-	-	-	-	-	-	-	-	-	-	-
Gikomba	104.3	104.3	-	-	-	-	-	-	-	-	-	-
Korokocho	-	-	70.0	-	-	-	-	-	-	-	-	-
Kayole	72.7	-	66.7	-	-	-	-	-	-	-	-	-
<b>Total</b>	<b>100.5</b>	<b>101.1</b>	<b>102.5</b>	<b>102.0</b>	<b>102.5</b>	<b>101.3</b>	<b>100.5</b>	<b>99.6</b>	<b>102.1</b>	<b>101.5</b>	<b>104.9</b>	<b>103.4</b>

**Table 10: Exports of Coffee and Tea**

Month	COFFEE *		TEA	
	Quantity (MT)	Value '(KSh. Million)	Quantity (MT)	Value '(KSh. Million)
<b>2021</b>				
January.....	2,129.36	1,342.45	48,811.79	11,378.64
February.....	3,481.13	2,161.12	50,389.92	11,725.86
March.....	6,065.07	4,556.94	53,432.10	12,672.90
April.....	3,337.01	2,307.12	51,899.23	11,575.75
May.....	4,430.33	3,010.49	50,041.59	11,070.79
June.....	3,436.88	2,271.77	43,993.25	9,547.74
July.....	2,696.29	1,763.90	43,844.48	9,203.50
August.....	2,504.38	1,657.82	44,421.07	9,874.40
September.....	2,480.29	1,735.13	36,307.66	8,565.59
October.....	2,432.20	1,674.37	40,078.09	10,316.47
November.....	2,170.19	1,740.12	45,318.19	12,180.56
December.....	2,314.35	1,918.64	47,922.07	12,724.88
<b>2022</b>				
January.....	3,238.60	2,633.51	45,584.65	12,628.76

Source: KRA Customs and Border Control Services department

\* Coffee, not Roasted

MT denotes Metric tonnes



**Table 11: Monthly Exports of Fresh Horticultural Produce**

Months	Cut Flowers				FRUITS				VEGETABLES			
	2021		2022*		2021		2022*		2021		2022*	
	Quantity (MT)	Value (KSh Million)	Quantity (MT)	Value (KSh Million)	Quantity (MT)	Value (KSh Million)	Quantity (MT)	Value (KSh Million)	Quantity (MT)	Value (KSh Million)	Quantity (MT)	Value (KSh Million)
January	15,169.04	10,767.58	11,360.35	6,497.70	7,071.82	1,038.19	5,631.10	762.10	6,066.26	3,430.90	2,355.98	867.14
February	17,411.90	11,947.44			11,738.47	1,697.31			5,363.26	2,222.24		
March	17,589.01	9,420.27			19,399.89	2,893.90			7,053.12	2,697.68		
April	16,473.23	8,525.04			19,046.36	2,719.63			6,177.43	2,253.52		
May	13,545.31	7,066.07			13,433.19	1,927.87			6,694.81	2,472.27		
June	12,786.28	5,475.70			11,415.49	1,804.96			8,942.62	2,447.22		
July	9,687.18	4,603.25			5,116.90	919.67			3,522.29	1,297.88		
August	19,842.63	9,810.21			8,742.79	1,614.25			7,206.65	2,664.92		
September	21,584.94	10,448.80			6,260.50	1,346.72			7,956.41	2,601.13		
October	24,382.26	12,785.51			5,105.03	745.01			8,435.29	2,608.88		
Nov	23,410.82	10,234.87			3,157.16	870.38			4,001.60	2,085.64		
Dec	18,253.30	9,764.52			6,834.19	805.01			6,643.50	1,678.40		
<b>Total</b>	<b>210,135.89</b>	<b>110,849.27</b>	<b>11,360.35</b>	<b>6,497.70</b>	<b>117,321.80</b>	<b>18,382.91</b>	<b>5,631.10</b>	<b>762.10</b>	<b>78,063.23</b>	<b>28,460.70</b>	<b>2,355.98</b>	<b>867.14</b>

Source: Horticultural Directorate

\* Provisional

**Table 12: External Trade**

		KSh Million					
Month		Domestic Exports	Re-Exports	Total Exports	Total Imports	Volume of Trade	Home use Imports
<b>2021*</b>							
January.....		49,570.48	4,743.15	54,313.63	160,723.93	215,037.56	152,098.04
February.....		58,701.48	8,790.05	67,491.53	159,547.18	227,038.71	153,277.19
March.....		60,215.79	8,029.39	68,245.19	187,095.06	255,340.25	183,373.06
April.....		53,375.93	5,485.80	58,861.73	161,847.41	220,709.13	154,720.58
May.....		56,910.62	6,226.85	63,137.47	162,198.06	225,335.53	155,023.58
June.....		52,304.35	4,439.83	56,744.17	160,159.92	216,904.09	155,621.22
July.....		54,893.95	4,517.02	59,410.97	177,168.59	236,579.56	164,803.20
August.....		55,275.67	6,066.94	61,342.61	172,950.46	234,293.07	167,065.44
September.....		48,736.77	5,215.73	53,952.51	190,322.95	244,275.46	181,021.80
October.....		58,249.68	6,659.71	64,909.39	187,863.17	252,772.57	180,500.89
November.....		55,358.70	8,847.26	64,205.96	191,812.82	256,018.78	186,968.16
December.....		57,756.21	8,594.46	66,350.67	235,233.24	301,583.91	222,886.14
<b>2022*</b>							
January.....		54,009.04	6,399.25	60,408.28	194,272.63	254,680.91	184,895.39

Source: Kenya Revenue Authority

\*Provisional

**Table 13(a): Major Destinations of Domestic Exports**

KSh Million											
Month/Country	Uganda	Tanzania	United Kingdom	Pakistan	Netherlands	Egypt	Germany	Rwanda	USA	United Arab Emirates	France
<b>2021*</b>											
January.....	4,057.47	2,274.20	4,584.99	4,550.15	5,444.13	1,604.35	1,250.79	1,465.90	4,985.78	2,216.37	727.29
February.....	6,870.27	2,431.41	5,033.00	4,598.23	5,850.86	2,353.14	1,880.30	1,722.03	3,849.57	2,593.93	819.88
March.....	5,686.64	2,612.97	5,097.76	4,722.82	5,535.02	2,460.03	2,303.29	1,847.51	4,563.14	2,090.72	1,127.14
April.....	6,554.92	2,758.96	3,077.24	3,585.95	4,505.80	1,672.16	795.07	1,958.34	3,480.22	1,422.81	647.37
May.....	6,035.04	2,367.05	4,224.31	4,391.38	5,389.51	1,825.95	922.85	2,076.59	4,487.26	1,512.78	901.54
June.....	7,066.70	2,846.37	4,298.39	3,791.40	4,364.61	1,214.03	874.15	2,334.52	5,226.85	1,529.66	1,057.13
July.....	6,308.38	3,752.88	3,872.87	4,033.58	4,049.64	1,109.89	913.20	2,515.98	6,989.67	1,643.04	807.14
August.....	6,986.13	3,104.14	3,402.84	4,092.64	3,830.14	1,791.96	1,111.15	2,543.91	4,801.14	1,935.71	953.08
September.....	3,636.25	4,846.18	3,353.35	2,977.96	3,868.66	1,467.78	1,018.42	1,674.44	4,941.51	1,834.99	800.85
October.....	6,764.65	5,873.82	4,104.44	4,452.84	4,403.60	1,485.34	918.70	2,841.97	4,674.26	1,891.27	657.77
November.....	5,909.20	3,933.45	4,175.13	5,984.68	4,933.53	1,838.46	1,119.31	1,873.13	5,212.70	2,181.19	569.51
December.....	5,534.75	3,727.75	3,755.62	5,720.84	4,045.10	2,212.38	1,039.81	2,716.77	4,755.02	2,556.81	576.97
<b>2022*</b>											
January.....	3,937.02	2,764.90	4,160.42	5,530.12	5,301.79	2,063.07	1,460.30	1,287.16	4,537.60	1,919.19	748.55

Source: Kenya Revenue Authority

\*Provisional

**Table 13(b): Domestic Exports by Broad Economic Category**

Value in KSh Million													
Descriptions	2021*												2022*
	Jan	Feb	Mar	April	May	Jun	Jul	Aug	Sep	Oct	Nov	Dec	Jan
Food and beverages.....	23,048.97	25,315.89	29,492.86	24,978.51	24,530.95	22,142.92	21,735.31	23,157.09	19,762.17	21,548.06	24,512.25	25,318.05	25,206.26
Industrial supplies (Non-Food) .....	11,981.10	14,279.80	12,859.01	11,522.40	15,240.90	13,493.91	14,891.13	15,833.11	11,730.28	17,397.97	13,392.89	15,431.86	14,325.77
Fuel and Lubricants.....	127.19	518.53	459.69	554.90	244.38	531.88	646.07	636.56	485.48	231.34	693.37	569.53	576.44
Machinery & other capital Equipment.....	609.99	1,071.58	1,044.80	884.38	1,070.48	819.75	1,598.11	785.38	967.62	1,152.87	705.83	861.31	569.89
Transport equipment.....	388.65	612.19	746.89	682.00	282.47	749.79	537.20	476.13	549.37	685.70	583.11	806.04	229.85
Consumer goods Not elsewhere specified..	13,414.58	16,903.45	15,612.55	14,753.74	15,541.06	14,566.10	15,481.52	14,386.79	15,239.15	16,663.47	15,470.92	14,769.42	13,100.82
Goods not elsewhere specified.....	0.00	0.04	0.00	0.00	0.38	0.00	4.61	0.61	2.70	570.27	0.00	0.00	0.00
<b>Total .....</b>	<b>49,570.48</b>	<b>58,701.48</b>	<b>60,215.79</b>	<b>53,375.93</b>	<b>56,910,162</b>	<b>52,304.35</b>	<b>54,893.95</b>	<b>55,275.67</b>	<b>48,736.77</b>	<b>58,249.68</b>	<b>55,358.37</b>	<b>57,756.21</b>	<b>54,009.04</b>
<b>Percentage Shares:.....</b>													
Food and Beverages .....	46.50	43.13	48.98	46.80	43.10	42.33	39.60	41.89	40.55	36.99	44.28	43.79	46.67
Industrial Supplies (Non-Food).....	24.17	24.33	21.35	21.59	26.78	25.80	27.13	28.64	24.07	29.87	24.19	26.74	26.52
Fuel and Lubricants .....	0.26	0.88	0.76	1.04	0.43	1.02	1.18	1.15	1.00	0.40	1.25	0.99	1.07
Machinery and other Capital Equipment....	1.23	1.83	1.74	1.66	1.88	1.57	2.91	1.42	1.99	1.98	1.28	1.49	1.06
Transport Equipment.....	0.78	1.04	1.24	1.28	0.50	1.43	0.98	0.86	1.13	1.18	1.05	1.40	0.43
Consumer Goods not elsewhere specified.	27.06	28.80	25.93	27.64	27.31	27.85	28.20	26.03	31.27	28.61	27.95	25.59	24.26
Goods not elsewhere specified	0.00	0.00	0.00	0.00	0.00	0.00	0.01	0.00	0.01	0.98	-	-	0.00
<b>TOTAL .....</b>	<b>100.00</b>	<b>100.00</b>	<b>100.00</b>	<b>100.00</b>	<b>100.00</b>	<b>100.00</b>	<b>100.00</b>	<b>100.00</b>	<b>100.00</b>	<b>100.00</b>	<b>100.00</b>	<b>100.00</b>	<b>100.00</b>

Source: Kenya Revenue Authority (KRA)

\*Provisional

**Table 14 (a) Major Origins of Imports**

Value (KSh Million)											
Month	United Arab Emirates	United Kingdom	South Africa	Saudi Arabia	Japan	India	USA	Germany	Netherlands	France	China
<b>2021*</b>											
January.....	15,030.59	2,319.46	3,817.06	10,091.06	6,676.66	13,321.57	5,490.58	3,219.51	870.96	1,815.79	39,908.40
February.....	8,299.60	3,165.87	2,351.63	7,733.54	6,438.55	17,487.54	5,463.17	2,969.54	4,227.29	1,981.49	30,192.24
March.....	14,763.76	3,484.21	4,652.60	8,437.10	9,336.63	19,380.77	9,282.15	5,617.20	5,494.45	2,420.50	36,947.80
April.....	11,952.69	2,405.78	2,951.96	11,415.19	8,805.94	21,504.08	4,101.05	2,824.74	4,576.33	1,498.19	33,251.25
May.....	17,776.19	2,885.77	3,542.97	4,563.09	7,345.80	16,830.99	5,834.16	2,925.18	6,421.75	2,042.91	33,881.43
June.....	8,881.49	2,804.02	5,006.60	2,249.96	7,447.67	21,458.08	6,007.00	3,500.92	4,407.30	1,587.83	34,723.81
July.....	11,581.72	2,361.82	2,576.07	9,102.82	9,491.93	20,281.95	6,081.01	2,906.08	5,064.51	1,225.94	38,368.79
August.....	19,660.43	2,734.48	3,854.43	10,622.50	9,028.14	15,499.26	6,902.45	3,415.09	3,015.19	2,493.33	34,428.59
September.....	14,405.23	2,763.31	4,505.55	15,202.56	5,958.14	22,496.28	13,250.83	7,824.59	1,820.18	2,542.29	37,236.38
October.....	19,796.47	2,211.13	4,230.42	14,839.12	9,792.56	19,206.96	7,718.41	2,156.23	1,595.31	1,298.96	42,725.28
November.....	12,806.99	3,083.65	3,673.53	13,396.31	7,870.77	20,632.64	7,028.67	2,778.28	3,069.49	1,805.32	36,412.80
December.....	23,825.77	3,617.96	2,978.52	7,030.52	9,793.02	22,899.94	7,106.04	2,928.31	6,264.34	1,798.83	43,400.82
<b>2022</b>											
January.....	12,463.81	2,041.55	4,260.92	13,011.61	6,818.88	25,504.80	6,704.58	3,070.41	2,037.42	1,735.88	35,891.59

Source: Kenya Revenue Authority

\*Provisional

**Table 14(b): Imports by Broad Economic Category**

Descriptions	Value in KSh Million												
	2021*												2022*
	Jan	Feb	Mar	Apr	May	June	July	Aug	Sep	Oct	Nov	Dec	Jan
Food and beverages.....	15,177.42	19,786.16	19,349.26	18,392.11	13,935.18	16,704.57	15,316.95	16,180.56	19,552.39	20,524.12	18,589.25	16,577.13	16,527.33
Industrial supplies (Non-Food) .....	65,149.81	65,424.95	71,783.99	63,733.46	68,280.85	62,443.43	70,494.75	68,984.29	71,503.34	71,486.73	74,003.83	77,070.80	85,370.87
Fuel and Lubricants.....	24,614.82	24,697.73	27,482.20	27,083.41	29,376.07	25,819.15	31,900.43	32,669.14	33,626.97	35,069.24	39,800.13	41,407.66	34,894.21
Machinery & other capital Equipment.....	26,890.73	21,715.53	25,386.58	22,753.02	21,892.19	22,835.78	28,386.26	25,619.49	25,234.35	28,901.56	26,440.80	60,391.16	25,682.25
Transport equipment.....	14,366.98	15,237.97	21,238.93	15,543.92	14,517.10	16,225.35	15,596.13	14,514.69	21,905.19	15,562.63	16,313.71	19,603.11	11,803.58
Consumer goods Not elsewhere specified..	13,007.90	12,574.38	21,391.52	13,987.90	14,025.15	15,887.77	15,408.43	14,781.02	17,895.76	16,169.48	16,514.55	19,989.54	19,152.40
Goods not elsewhere specified.....	1,516.27	110.47	462.56	353.58	171.54	243.89	65.63	201.26	604.96	149.42	150.55	193.83	841.98
<b>Total .....</b>	<b>160,723.93</b>	<b>159,547.18</b>	<b>187,095.06</b>	<b>161,847.41</b>	<b>162,198.06</b>	<b>160,159.92</b>	<b>177,168.59</b>	<b>172,950.46</b>	<b>190,322.95</b>	<b>187,863.17</b>	<b>191,812.82</b>	<b>235,233.24</b>	<b>194,272.63</b>
<b>Percentage Shares:.....</b>													
Food and Beverages .....	9.44	12.40	10.34	11.36	8.59	10.43	8.65	9.36	10.27	10.93	9.69	7.04	8.51
Industrial Supplies (Non-Food).....	40.54	41.01	38.37	39.38	42.10	38.99	39.79	39.89	37.57	38.05	38.58	32.75	43.94
Fuel and Lubricants .....	15.32	15.48	14.69	16.73	18.11	16.12	18.01	18.89	17.67	18.67	20.75	17.59	17.96
Machinery and other Capital Equipment....	16.73	13.61	13.57	14.06	13.50	14.26	16.02	14.81	13.26	15.38	13.78	25.69	13.22
Transport Equipment.....	8.94	9.55	11.35	9.60	8.95	10.13	8.80	8.39	11.51	8.28	8.51	8.33	6.08
Consumer Goods not elsewhere specified..	8.09	7.88	11.43	8.64	8.65	9.92	8.70	8.55	9.40	8.61	8.61	8.51	9.86
Goods not elsewhere specified.....	0.94	0.07	0.25	0.22	0.11	0.15	0.04	0.12	0.32	0.08	0.08	0.08	0.43
<b>TOTAL .....</b>	<b>100</b>	<b>100</b>	<b>100</b>	<b>100</b>	<b>100</b>	<b>100</b>	<b>100</b>	<b>100</b>	<b>100</b>	<b>100</b>	<b>100</b>	<b>100</b>	<b>100</b>

Source: Kenya Revenue Authority

\*Provisional

**Table 14 (c): Mobile Money Transactions**

As at the end of month	Mobile money Agents	Mobile money subscriptions (millions)	Number of Transactions (millions) <sup>1</sup>	Value (KSh billions) <sup>2</sup>
<b>2021</b>				
January	287,410	66.59	173.91	590.36
February	294,111	67.16	164.20	567.99
March	293,403	65.93	182.29	537.75
April	294,706	67.11	173.35	502.22
May	298,883	67.77	180.76	536.69
June	301,457	67.78	175.83	532.63
July	303,718	68.54	184.00	587.98
August	304,822	68.09	184.51	586.52
September	305,831	67.70	180.85	585.38
October	295,105	66.88	190.06	618.14
November	299,053	67.15	185.98	600.97
December	298,272	68.03	189.80	622.14
<b>2022</b>				
January	299,860	68.28	181.85	585.82
February	301,108	67.94	171.39	568.71

<sup>1</sup> Total agent cash in cash out

<sup>2</sup> Total agent cash in cash out

Source: Central Bank of Kenya

**Table 14(d): International trade in ICT**

	2021												2022
	Jan	Feb	Mar	Apr	May	Jun	Jul	Aug	Sep	Oct	Nov	Dec	Jan
<b>Imports</b>													
Office machines 1.....	53.59	75.66	95.86	107.74	56.92	221.86	64.55	166.32	74.75	125.54	73.93	135.10	65.51
Automatic data processing machines, storage units etc.....	1,066.69	800.61	1,079.89	727.78	1,260.01	938.90	912.33	1,024.90	2,247.61	1,292.12	1,083.89	1,650.01	1,261.23
Part and accessories 2.....	50.60	69.89	103.74	45.94	134.02	58.13	40.81	67.18	53.28	74.02	54.89	43.17	45.39
Monitors and projectors and reception apparatus for television3.....	996.95	806.37	860.25	687.21	596.30	632.27	741.37	709.74	764.34	703.05	519.66	682.05	826.50
Reception apparatus for radio broadcasting4 .....	31.56	10.74	33.68	16.17	17.81	71.46	16.60	18.71	28.16	16.85	36.80	16.15	4.61
Recording equipments 5.....	42.02	7.70	7.96	12.65	19.19	12.34	12.23	17.93	10.00	8.44	116.28	8.83	12.31
Telecommunications equipment 6.....	2,003.02	1,158.86	1,200.83	1,010.66	1,918.00	1,554.09	3,417.78	1,284.60	1,233.65	1,778.35	2,225.12	4,139.32	1,995.15
<b>Exports</b>													
Office machines 1.....	0.27	4.12	4.51	1.26	0.24	-	31.74	2.81	0.52	3.58	0.02	14.18	0.17
Automatic data processing machines, storage units etc.....	33.58	56.48	71.65	35.09	10.39	44.32	10.19	16.16	43.20	29.05	13.05	131.31	23.50
Part and accessories 2.....	2.63	4.12	6.93	0.50	14.84	0.07	0.71	0.87	0.90	4.51	2.36	0.01	0.65
Monitors and projectors and reception apparatus for television3.....	11.94	3.68	50.13	1.90	0.02	47.45	40.50	8.56	3.63	27.54	15.31	22.97	1.00
Reception apparatus for radio broadcasting4 .....	0.10	0.02	0.04	0.36	0.15	0.06	3.44	0.01	0.34	0.26	0.00	9.90	0.02
Recording equipments 5.....	0.05	0.01	0.01	0.00	17.43	0.04	0.03	0.68	25.41	0.13	1.60	0.11	0.00
Telecommunications equipment 6.....	3.80	114.85	17.73	16.78	0.00	81.42	15.19	13.87	0.00	81.09	123.74	193.93	6.46

Source; Kenya Revenue Authority (KRA).....

<sup>1</sup> Electronic calculating machines, cash registers, accounting machines, postage-

<sup>2</sup> For office machines and data processing machines

<sup>3</sup> Include Television sets, decoders etc

<sup>4</sup> Whether or not combined with sound recording or reproducing apparatus or a

<sup>5</sup> Sound recording, video recording or reproducing apparatus including or not

<sup>6</sup> Such as computer, laptops, networking equipments etc plus their parts and accessories such as telephone sets, microphones, electric sound amplifier sets Television cameras, digital or video cameras recorders, radio or tv transmission apparatus etc

\_ No data



**Table 15(a): Local Electricity Generation by Source**

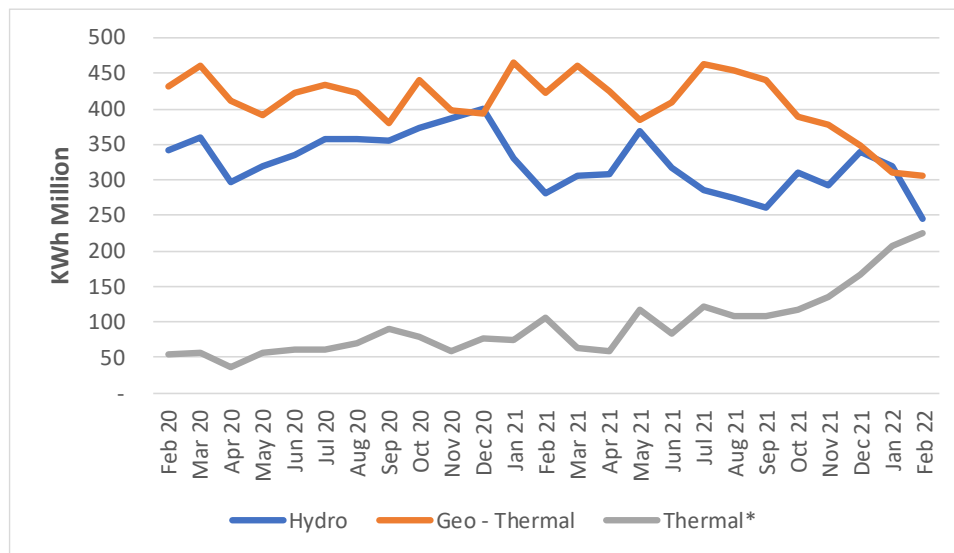
							KWh Million
Month	Hydro	Geo - Thermal	Thermal <sup>1</sup>	Wind	Solar	Co-Generation	Total
<b>2021</b>							
January	330.31	464.78	74.69	137.65	7.44	0.03	1,014.91
February	281.40	422.15	105.51	109.84	6.97	0.04	925.92
March	305.11	460.68	63.08	199.92	7.77	0.03	1,036.59
April	307.93	424.54	59.60	164.71	7.41	0.06	964.23
May	369.02	385.38	116.17	130.21	7.59	0.04	1,008.40
June	317.99	408.96	84.17	184.61	7.41	0.05	1,003.19
July	285.79	463.16	122.59	152.69	13.06	0.05	1,037.35
August	274.03	452.79	109.35	190.07	17.02	0.05	1,043.30
September	261.68	439.81	107.24	187.06	18.24	0.03	1,014.07
October	309.26	387.80	117.64	200.91	23.43	0.01	1,039.05
November	293.33	378.49	134.91	195.68	23.04	0.04	1,025.49
December	339.13	348.50	167.26	131.45	27.85	0.03	1,014.22
<b>2022*</b>							
January	320.30	310.79	206.26	156.28	32.41	0.00	1,026.03
February	244.23	304.77	223.97	123.29	30.09	0.05	926.40

Source: Kenya Power

\*Provisional

<sup>1</sup> Includes all offgrid power

**Fig. 7: Electricity Generation by Source**



**Table 15(b): Generation and Consumption of Electricity**

Million										
Month	Generation					Consumption				
	Local Generation	Imports			Total Generation	Total KPLC Sales	Exports			
		Uganda	Tanzania	Ethiopia			Uganda	Tanzania	Total Exports	
<b>2021</b>										
January	<b>1,014.91</b>	16.00	0.00	0.44	<b>16.44</b>	<b>1,031.35</b>	792.01	0.73	0.00	
February	<b>925.92</b>	20.26	0.00	0.41	<b>20.67</b>	<b>946.59</b>	742.34	0.49	0.00	
March	<b>1,036.59</b>	22.20	0.00	0.40	<b>22.60</b>	<b>1,059.19</b>	799.42	0.54	0.00	
April	<b>964.23</b>	15.20	0.00	0.40	<b>15.60</b>	<b>979.83</b>	775.02	2.79	0.00	
May	<b>1,008.40</b>	23.73	0.00	0.43	<b>24.16</b>	<b>1,032.56</b>	785.36	3.00	0.00	
June	<b>1,003.19</b>	23.19	0.00	0.33	<b>23.52</b>	<b>1,026.72</b>	796.34	1.90	0.00	
July	<b>1,037.35</b>	28.68	0.00	0.43	<b>29.11</b>	<b>1,066.46</b>	813.35	1.72	0.00	
August	<b>1,043.30</b>	26.33	0.00	0.44	<b>26.77</b>	<b>1,070.08</b>	823.95	1.61	0.00	
September	<b>1,014.07</b>	26.78	0.00	0.45	<b>27.23</b>	<b>1,041.30</b>	801.61	1.09	0.00	
October	<b>1,039.05</b>	26.21	0.00	0.47	<b>26.68</b>	<b>1,065.73</b>	835.08	1.47	0.00	
November	<b>1,025.49</b>	26.52	0.00	0.43	<b>26.95</b>	<b>1,052.44</b>	805.08	1.43	0.00	
December	<b>1,014.22</b>	27.68	0.00	0.48	<b>28.16</b>	<b>1,042.38</b>	800.94	1.43	0.00	
<b>2022*</b>										
January	<b>1,026.03</b>	30.34	0.00	0.49	<b>30.83</b>	<b>1,056.87</b>	826.80	0.85	0.00	
February	<b>926.40</b>	34.14	0.00	0.46	<b>34.60</b>	<b>961.00</b>	760.20	0.18	0.00	

Source: Kenya Power

\*Provisional

**Table 15(c): Consumption of Petroleum Fuels**

								'000 MT
Month	AGO (Light Diesel Oil)	Jet	Fuel Oil	Motor Spirit	Illuminatin g Kerosene	IDO (Heavy Diesel Oil)	LPG	Aviation Gasoline
<b>2020</b>								
January.....	190.11	62.21	13.61	123.45	11.21	0.00	12.89	0.13
February....	173.90	58.45	18.10	112.98	10.93	0.32	36.54	0.10
March.....	187.57	42.55	24.79	111.44	10.85	0.21	23.98	0.11
April.....	137.71	6.32	21.36	82.20	10.76	0.00	31.43	0.03
May .....	139.71	17.38	22.79	91.89	10.98	0.00	30.86	1.19
June.....	158.19	19.42	18.85	103.91	12.16	0.00	23.33	0.02
July.....	185.64	23.19	21.14	125.51	9.93	0.00	28.24	0.05
August.....	191.38	29.72	25.96	120.20	13.18	0.03	41.31	0.06
September..	194.96	30.67	25.81	121.16	7.65	0.12	21.42	0.08
October.....	199.14	34.15	23.52	131.44	12.72	1.07	27.24	0.05
November..	187.96	34.06	23.51	121.94	9.29	3.54	26.61	0.08
December..	197.19	40.26	32.05	145.29	8.92	5.66	22.38	0.08
<b>2021*</b>								
January.....	183.26	41.27	18.25	121.83	10.07	0.00	36.68	0.05
February....	177.73	40.25	27.75	119.43	10.45	0.03	26.92	0.07
March.....	214.34	42.85	12.40	135.08	11.60	0.37	31.77	0.08
April.....	180.98	37.51	18.62	116.21	10.23	0.23	26.38	0.07
May.....	181.11	35.93	31.16	122.63	9.67	0.23	33.88	0.64
June.....	193.00	37.41	36.11	124.09	8.73	0.01	33.22	0.12
July.....	192.19	41.10	27.02	133.79	8.91	0.03	24.30	0.06
August.....	189.60	43.27	28.16	129.64	9.25	0.04	24.53	0.07
September..	187.81	44.72	23.58	126.94	10.07	0.00	35.97	0.05
October.....	186.72	48.61	27.97	127.45	7.62	0.03	37.33	0.07
November..	201.65	44.16	26.71	140.02	8.13	0.06	32.35	0.07
December..	199.62	49.79	37.35	147.34	8.12	0.00	28.06	0.05

Source: Ministry of Energy and Petroleum and Energy & Petroleum Regulatory Authority (EPRA)

MT: Denotes Metric Tonnes

\*Provisional

**Table 15(d): Average Retail Prices for Selected Fuel Products within Nairobi**

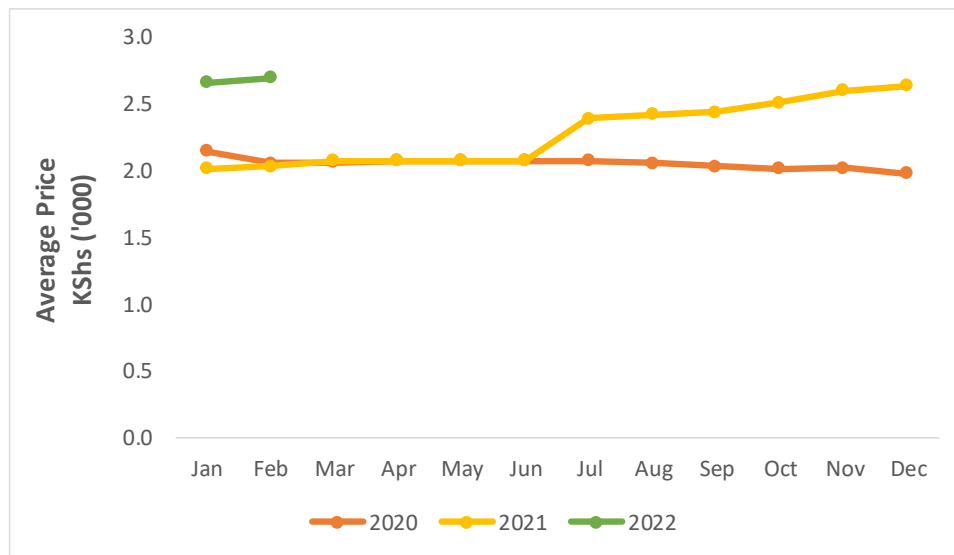
KSh per litre			
Period	Motor Gasoline Premium	Light Diesel Oil (Gasoil)	Illuminating Kerosene
<b>2021</b>			
January.....	106.99	96.4	87.12
February....	115.18	101.91	92.44
March.....	122.81	107.66	97.85
April.....	122.81	107.66	97.85
May.....	126.37	107.66	97.85
June.....	127.14	107.66	97.85
July.....	127.14	107.66	97.85
August.....	127.14	107.66	97.85
September..	134.72	115.6	110.82
October.....	129.72	110.6	103.54
November..	129.72	110.6	103.54
December..	129.72	129.72	103.54
<b>2022</b>			
January.....	129.72	129.72	103.54
February....	129.72	129.72	103.54

**Table 15(e): Average Retail Prices for Selected Fuels in Kenya (National Average Retail Prices)**

Period	Motor Gasoline Premium (KSh per Litre)	Light Diesel Oil (KSh per Litre)	Illuminating Kerosene (KSh per Litre)	L.P.G (KSh per 13 Kg)	Charcoal (KSh per Kg )
<b>2021</b>					
January.....	107.86	97.33	88.07	2,018.93	58.51
February.....	116.03	102.84	93.37	2,031.21	58.37
March.....	123.66	108.58	98.78	2,074.23	59.42
April.....	123.66	108.58	98.78	2,074.23	59.83
May.....	127.21	108.58	98.78	2,074.23	58.07
June.....	127.98	108.58	98.78	2,074.23	58.79
July.....	127.98	108.58	98.78	2,394.18	59.52
August.....	127.98	108.58	98.78	2,420.68	59.38
September.....	135.54	116.51	111.74	2,445.23	60.37
October.....	130.54	111.51	104.46	2,513.74	61.01
November.....	130.54	111.51	105.46	2,611.18	60.74
December.....	130.54	111.51	106.46	2,638.83	61.31
<b>2022</b>					
January.....	130.54	111.51	106.46	2,659.24	63.11
February.....	130.54	111.51	106.46	2,659.70	63.71

Note: Unit of measure for charcoal changed to 1 kg beginning February 2020 .....

**Fig. 8: Average Prices for Liquefied Petroleum Gas in Kenya ('000 KSh per 13 Kg cylinder)**



**Table 15(f): Opec Reference basket and Murban Crude Oil Prices**

Month/Year	US\$/ BBL				
	2018	2019	2020	2021	2022
January.....	66.28	60.81	66.09	54.38	85.41
February.....	65.98	65.64	55.53	61.05	93.95
March.....	66.31	68.60	33.92	64.56	
April.....	70.97	73.05	17.66	63.24	
May.....	76.71	69.70	25.17	66.91	
June.....	73.22	62.75	37.05	71.89	
July.....	76.00	64.86	43.42	73.53	
August.....	74.91	60.16	45.19	70.33	
September.....	78.75	62.39	41.54	73.88	
October.....	81.28	60.88	40.08	82.11	
November.....	68.05	63.48	42.61	80.37	
December.....	59.33	66.66	49.17	74.38	

*US\$/ BBL: US Dollar per Barrel*

*2016-2019 prices are Murban Adnoc crude oil monthly average prices*

*Price: Abu Dhabi Free On Board (FOB)*

*ADNOC: Abu Dhabi National Oil Corporation*

*\* As from Feb 2020 all prices published will refer to the OPEC reference basket as defined by*

*\* As from Feb 2020 all prices published are crude spot prices on the 20th of the reference mo*

**Table 16: Value of Building Plans Approved for Nairobi City County**

KSh Million

Month	Actual Value of Buildings			Real *		
	Residential	Non Residential	Aggregate	Residential	Non Residential	Aggregate
<b>2020</b>						
January.....	12,361.60	7,985.49	20,347.09	126.87	82.73	<b>208.88</b>
February.....	24,801.96	6,716.30	31,518.26	254.55	69.58	<b>323.57</b>
March.....	22,827.64	7,744.80	30,572.44	234.29	80.23	<b>313.86</b>
April.....	12,284.89	8,749.42	21,034.30	126.08	90.64	<b>215.94</b>
May.....	3,430.74	2,582.29	6,013.02	35.21	26.75	<b>61.73</b>
June.....	-	-	-	-	-	-
July.....	-	-	-	-	-	-
August.....	5,037.15	2,127.04	7,164.20	51.70	22.04	<b>73.55</b>
September.....	3,302.22	828.84	4,131.06	33.89	8.59	<b>42.41</b>
October.....	-	-	-	-	-	-
November.....	8,335.88	5,160.24	13,496.11	85.55	53.46	<b>138.55</b>
December.....	16,776.05	2,522.87	19,298.92	172.18	26.14	<b>198.12</b>
<b>2021</b>						
January.....	6,329.78	2,702.02	9,031.80	63.23	27.20	<b>90.26</b>
February.....	7,497.72	2,130.36	9,628.08	74.90	21.45	<b>96.22</b>
March.....	11,270.96	2,903.69	14,174.64	112.60	29.23	<b>141.66</b>
April.....	4,284.75	619.74	4,904.48	42.80	6.24	<b>49.02</b>
May.....	2,708.76	2,038.99	4,747.75	27.06	20.53	<b>47.45</b>
June.....	1,402.78	283.10	1,685.89	1,390.13	280.55	<b>1,670.68</b>
July.....	1,293.78	279.37	1,573.15	1,282.11	276.85	<b>1,558.96</b>
August.....	162.53	123.11	285.64	161.07	122.00	<b>283.07</b>
September.....	9,567.72	5,359.27	14,926.99	9,481.44	5,310.94	<b>14,792.38</b>
October.....	17,717.69	1,875.12	19,592.81	17,557.92	1,858.21	<b>19,416.13</b>
November.....	8,580.41	1,880.48	10,460.88	8,503.03	1,863.52	<b>10,366.55</b>
December.....	5,481.45	6,362.91	11,844.36	5,432.02	6,305.53	<b>11,737.54</b>

Source; Nairobi City County

\* Actual deflated by new Construction Input Price Indices beginning June 2021

- No Building plans were approved

**Table 17(a): Domestic Production of Sugar**

Month/Year	Metric tonnes				
	2017	2018	2019	2020	2021 <sup>†</sup>
January	53,071	62,819	53,060	53,155	58,044
February	49,094	53,835	46,139	51,083	61,508
March	42,238	49,148	45,463	52,699	66,194
April	26,230	36,682	35,312	45,468	58,404
May	15,246	28,933	36,307	46,350	57,796
June	16,113	28,320	28,545	49,680	58,968
July	17,882	30,260	25,097	53,155	57,513
August	10,892	35,676	32,835	53,434	64,134
September	21,649	40,725	33,356	54,873	45,347
October	31,621	45,324	35,259	54,830	49,899
November	43,175	41,107	30,900	50,227	60,022
December	48,900	38,268	38,662	38,834	62,333
<b>Total</b>	<b>376,111</b>	<b>491,097</b>	<b>440,935</b>	<b>603,788</b>	<b>700,162</b>

Source: Sugar Directorate

Revised<sup>†</sup>



**Table 17(b): Production of Soft Drinks**

	'000 Litres				
<b>Month</b>	<b>2017</b>	<b>2018</b>	<b>2019</b>	<b>2020</b>	<b>2021<sup>+</sup></b>
January	50,409	52,062	53,585	52,654	50,153
February	43,353	49,685	55,218	42,072	42,749
March	50,623	52,580	61,413	52,109	53,157
April	46,399	45,690	58,230	35,951	43,742
May	40,742	41,482	53,086	34,129	40,266
June	45,875	44,827	46,074	47,273	48,457
July	41,980	43,725	47,149	39,833	33,864
August	41,217	48,795	49,248	39,290	43,744
September	40,221	45,956	53,234	52,436	53,383
October	45,275	46,546	47,586	47,215	53,394
November	45,073	50,201	50,715	42,916	56,226
December	66,378	54,021	55,398	64,707	58,453
<b>Total</b>	<b>557,548</b>	<b>575,569</b>	<b>630,936</b>	<b>550,585</b>	<b>577,589</b>

*Revised<sup>+</sup>*

**Table 17(c): Production of Assembled Vehicles**

Month/Year	Numbers				
	2017	2018	2019	2020	2021 <sup>+</sup>
January	276	395	431	614	560
February	578	529	614	861	565
March	645	548	633	830	705
April	436	409	739	669	737
May	434	407	732	659	609
June	323	366	556	415	576
July	483	587	648	735	798
August	302	434	709	595	962
September	351	606	595	591	1,173
October	370	569	728	676	1,138
November	364	476	872	533	968
December	322	327	545	547	1,198
<b>Total</b>	<b>4,884</b>	<b>5,653</b>	<b>7,802</b>	<b>7,725</b>	<b>9,989</b>

*Revised<sup>+</sup>*

**Table 17(d): Production of Galvanized Sheets**

Month/Year	Metric Tonnes				
	2017	2018	2019	2020	2021 <sup>+</sup>
January.....	26,230	23,919	20,124	23,397	18,631
February.....	22,994	21,890	22,749	21,989	20,762
March.....	22,574	22,048	26,313	18,527	21,781
April.....	23,225	21,434	23,214	6,259	21,572
May.....	23,081	22,271	22,501	18,042	21,165
June.....	15,424	21,434	24,667	23,730	22,365
July.....	22,640	22,510	23,260	24,493	20,343
August.....	15,296	21,847	21,918	23,226	19,662
September.....	24,188	22,425	22,641	20,801	17,479
October.....	21,312	23,906	22,619	22,868	20,111
November.....	24,357	22,877	21,871	23,268	25,926
December.....	21,438	21,266	22,547	20,854	20,348
<b>Total</b>	<b>262,759</b>	<b>267,828</b>	<b>274,425</b>	<b>247,455</b>	<b>250,147</b>

*Revised<sup>+</sup>*

**Table 17(e): Cement Production and Consumption**

Month/Year	Tonnes					
	2020		2021+		2022*	
	Production	Consumption	Production	Consumption	Production	Consumption
January.....	530,404	528,904	669,530	663,795	855,393	844,597
February.....	548,818	547,543	612,980	606,204	838,215	
March.....	559,424	551,914	721,444	715,968		
April.....	509,197	506,800	695,953	684,497		
May.....	511,961	509,698	717,669	707,536		
June.....	594,421	591,799	698,424	685,697		
July.....	666,341	659,798	876,998	861,938		
August.....	712,701	691,588	896,825	879,063		
September.....	707,033	677,381	866,344	856,980		
October.....	731,253	723,124	892,975	870,442		
November.....	668,507	662,609	807,553	788,229		
December.....	666,855	661,504	791,050	778,088		
<b>TOTAL.....</b>	<b>7,406,914</b>	<b>7,312,662</b>	<b>9,247,745</b>	<b>9,098,436</b>	<b>1,693,608</b>	<b>844,597</b>

\*Provisional

Revised †

**Table 17(f): Milk Intakes in the Formal Sector**

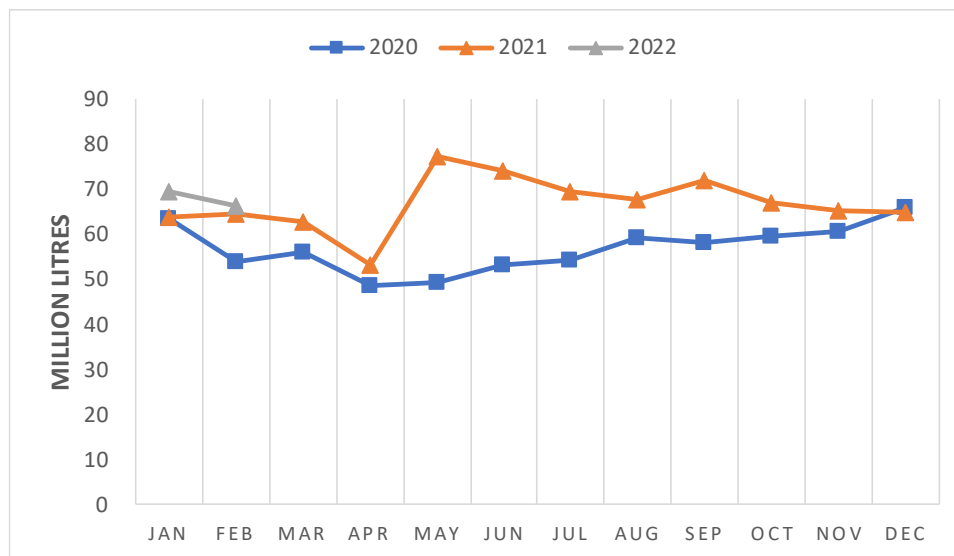
Month/Year	Million Litres					
	2017	2018	2019	2020	2021	2022
January.....	45.13	51.55	68.07	63.39	63.80	69.36
February.....	46.24	47.30	54.66	53.88	64.62	66.42
March.....	38.64	49.85	54.33	56.09	62.79	
April.....	47.09	52.01	41.46	48.61	53.32	
May.....	47.24	49.63	48.29	49.36	77.33	
June.....	48.87	50.33	52.33	53.24	74.07	
July.....	42.55	53.18	63.54	54.31	69.49	
August.....	54.95	52.56	60.46	59.31	67.75	
September.....	55.81	56.37	63.21	58.04	72.04	
October.....	58.14	55.25	59.32	59.71	66.59	
November.....	55.21	57.02	51.30	60.58	65.22	
December.....	51.51	68.15	68.91	67.86	64.89	
<b>Total.....</b>	<b>591.38</b>	<b>643.20</b>	<b>685.87</b>	<b>684.38</b>	<b>801.91</b>	<b>135.78</b>

Source: Kenya Dairy Board

\* Provisional

Revised +

**Fig. 9: Milk Intake in the Formal Sector**



**Table 18: Visitor Arrivals through J.K.I.A and M.I.A**

			Numbers <sup>1</sup>
Month	AIRPORT		Total
	JKIA	MIA	
<b>2021</b>			
January	43,234	3,045	<b>46,279</b>
February	32,047	3,005	<b>35,052</b>
March	37,214	3,194	<b>40,408</b>
April	27,850	3,037	<b>30,887</b>
May	32,153	1,735	<b>33,888</b>
June	46,494	2,038	<b>48,532</b>
July	64,493	4,532	<b>69,025</b>
August	72,291	6,257	<b>78,548</b>
September	66,667	3,633	<b>70,300</b>
October	67,608	5,201	<b>72,809</b>
November	71,271	5,435	<b>76,706</b>
December	82,867	7,637	<b>90,504</b>
<b>2022*</b>			
January	63,277	6,655	<b>69,932</b>
February	67,560	6,390	<b>73,950</b>

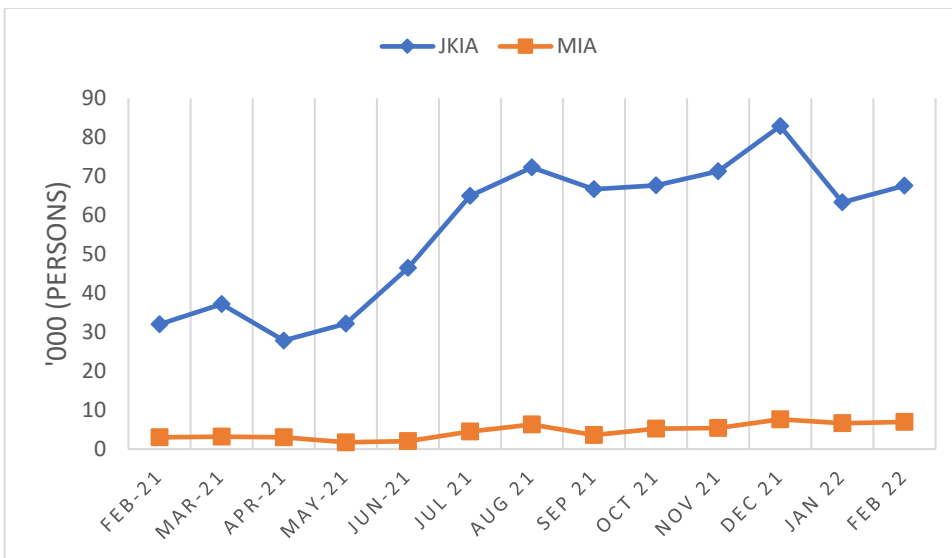
Source: Department of immigration Services Kenya

<sup>1</sup> Visitor arrivals exclude Kenyans

+ Revised

\* Provisional

**Fig. 10: Visitor Arrivals through J.K.I.A and M.I.A**



**Table 19(a): Jomo Kenyatta international airport-Embarked Passengers by Port of Destination**

PORTS/MONTH	2021											Number 2022*	
	Feb	Mar	Apr	May	Jun	Jul	Aug	Sep	Oct	Nov	Dec	Jan	Feb
Amsterdam	2,579	3,933	3,637	4,169	4,808	7,054	9,019	7,522	7,654	7,544	6,626	9,374	6,756
Brussels	0	11	0	0	0	0	0	0	0	0	0	0	0
London	2,779	4,348	2,026	5	85	378	840	1,161	4,472	6,381	8,510	11,070	9,628
Paris	1,250	1,232	1,413	1,617	3,577	5,581	8,754	6,441	6,091	6,533	7,235	9,155	7,101
Zurich	0	0	0	0	0	0	0	0	0	9	0	0	0
Other Europe	4,135	5,101	5,556	3,944	6,255	7,984	9,246	7,398	7,103	7,340	8,142	8,835	6,505
<b>Total Europe</b>	<b>10,743</b>	<b>14,625</b>	<b>12,632</b>	<b>9,735</b>	<b>14,725</b>	<b>20,997</b>	<b>27,859</b>	<b>22,522</b>	<b>25,320</b>	<b>27,807</b>	<b>30,513</b>	<b>38,434</b>	<b>29,990</b>
New York	428	428	536	524	1,766	2,630	2,912	1,339	1,121	1,134	1,890	2,747	1,493
Other North America	0	0	0	0	0	0	0	0	0	0	0	0	0
<b>Total North America</b>	<b>428</b>	<b>428</b>	<b>536</b>	<b>524</b>	<b>1,766</b>	<b>2,630</b>	<b>2,912</b>	<b>1,339</b>	<b>1,121</b>	<b>1,134</b>	<b>1,890</b>	<b>2,747</b>	<b>1,493</b>
Dubai	7,960	10,073	8,449	8,587	10,033	12,040	16,696	15,525	16,301	19,221	12,927	1,039	16,975
Jeddah	1,731	1,811	1,452	1,981	1,506	4,350	6,735	3,289	4,475	3,238	4,150	2,830	1,465
Other Middle East	7,369	12,548	12,471	9,844	11,031	18,103	23,501	24,017	23,521	19,535	22,894	19,087	17,254
<b>Total Middle East</b>	<b>17,060</b>	<b>24,432</b>	<b>22,372</b>	<b>20,412</b>	<b>22,570</b>	<b>34,493</b>	<b>46,932</b>	<b>42,831</b>	<b>44,297</b>	<b>41,994</b>	<b>39,971</b>	<b>22,956</b>	<b>35,694</b>
Mumbai	1,521	3,214	1,937	0	42	172	542	675	1,906	1,985	1,893	1,715	1,264
Bangkok	0	0	0	0	0	0	0	0	0	0	0	0	523
Other Far East	2,683	1,906	2,241	2,065	2,645	2,315	1,325	2,238	2,019	3,364	3,430	2,269	1,525
<b>Total Far East</b>	<b>4,204</b>	<b>5,120</b>	<b>4,178</b>	<b>2,065</b>	<b>2,687</b>	<b>2,487</b>	<b>1,867</b>	<b>2,913</b>	<b>3,925</b>	<b>5,349</b>	<b>5,323</b>	<b>3,984</b>	<b>3,312</b>
Addis Ababa	7,253	8,031	6,534	8,636	8,871	9,152	11,119	10,002	10,327	9,309	9,970	13,001	8,457
Bujumbura	481	490	361	373	519	1,060	918	886	1,085	1,035	1,314	920	1,152
Dar-es-alaam	1,999	2,126	2,979	3,709	4,219	4,826	5,238	4,962	6,161	5,458	6,645	5,059	6,168
Entebbe	4,718	5,719	5,095	5,407	4,147	3,421	5,258	6,007	7,626	8,062	9,670	8,094	7,939
Kigali	1,238	1,938	2,108	2,476	2,991	2,760	4,297	3,877	4,023	4,115	3,710	3,505	3,704
Kinshasa	1,672	1,851	2,168	1,589	1,514	1,299	1,286	1,241	2,256	3,190	2,307	1,464	1,583
Other East & Central Africa	754	1,148	963	822	1,125	1,749	2,151	2,026	2,193	2,420	2,944	2,624	3,808
<b>Total East &amp; Central Africa</b>	<b>18,115</b>	<b>21,303</b>	<b>20,208</b>	<b>23,012</b>	<b>23,386</b>	<b>24,267</b>	<b>30,267</b>	<b>29,001</b>	<b>33,671</b>	<b>33,589</b>	<b>36,560</b>	<b>34,667</b>	<b>32,811</b>
Mauritius	0	0	0	0	0	0	101	111	1,057	927	1,067	843	1,147
Seychelles	7	0	1	0	0	223	375	254	318	351	409	531	396
Zanzibar	773	610	230	309	430	932	853	1,308	1,971	3,270	4,405	2,417	2,623
Other Indian Ocean Islands	356	449	442	284	779	1,672	953	491	858	939	1,154	947	1,113
<b>Total Indian Ocean Islands</b>	<b>1,136</b>	<b>1,059</b>	<b>673</b>	<b>593</b>	<b>1,209</b>	<b>2,827</b>	<b>2,282</b>	<b>2,164</b>	<b>4,204</b>	<b>5,487</b>	<b>7,035</b>	<b>4,738</b>	<b>5,279</b>
Abidjan	538	356	379	75	0	335	230	299	402	557	1,012	749	720
Douala	681	572	384	220	216	322	319	445	477	502	913	410	354
Lagos	1,283	1,315	1,994	1,511	1,713	1,827	1,789	2,070	2,159	3,833	3,794	2,039	2,191
Accra	1,388	1,924	1,344	1,270	1,361	1,453	1,518	1,590	1,567	1,937	2,260	1,767	1,584
Other West Africa	66	128	106	2	11	4	5	0	5	30	0	4	0
<b>Total West Africa</b>	<b>3,956</b>	<b>4,295</b>	<b>4,207</b>	<b>3,078</b>	<b>3,301</b>	<b>3,941</b>	<b>3,861</b>	<b>4,404</b>	<b>4,610</b>	<b>6,859</b>	<b>7,979</b>	<b>4,969</b>	<b>4,849</b>
Johannesburg	3,670	3,891	3,467	3,780	3,609	3,282	4,297	4,733	5,489	5,945	6,088	6,177	6,289
Harare	285	430	489	260	306	604	740	950	993	1,184	1,443	1,517	1,155
Lilongwe	762	1,200	1,249	988	964	838	1,054	1,391	2,134	2,049	1,961	1,869	1,884
Lusaka	504	764	970	785	1,006	924	933	961	1,359	1,389	918	1,008	1,674
Cape Town	124	233	147	51	62	0	81	42	405	450	481	384	314
Other South Africa	1,095	1,164	816	466	445	587	499	1,110	1,460	1,458	1,042	1,182	1,090
<b>Total Southern Africa</b>	<b>6,440</b>	<b>7,682</b>	<b>7,138</b>	<b>6,330</b>	<b>6,392</b>	<b>6,235</b>	<b>7,604</b>	<b>9,187</b>	<b>11,840</b>	<b>12,475</b>	<b>11,933</b>	<b>12,137</b>	<b>12,406</b>
Cairo	979	1,340	1,267	1,158	1,583	1,974	2,601	1,954	2,186	2,541	3,053	4,372	3,131
Khartoum	2	3	5	0	0	116	4	1,304	0	0	174	225	161
Juba	1,657	1,738	2,016	2,076	2,340	2,525	2,773	2,505	3,234	3,740	3,080	5,148	2,925
Other North Africa	9	81	42	57	76	64	0	138	183	3	4	1	96
<b>Total North Africa</b>	<b>2,647</b>	<b>3,162</b>	<b>3,330</b>	<b>3,291</b>	<b>3,999</b>	<b>4,679</b>	<b>5,378</b>	<b>5,901</b>	<b>5,603</b>	<b>6,284</b>	<b>6,311</b>	<b>9,746</b>	<b>6,313</b>
<b>Other International</b>	<b>3,878</b>	<b>4,879</b>	<b>3,125</b>	<b>1,425</b>	<b>3,549</b>	<b>5,971</b>	<b>7,063</b>	<b>6,465</b>	<b>5,377</b>	<b>6,133</b>	<b>6,096</b>	<b>7,154</b>	<b>7,067</b>
<b>Total International</b>	<b>68,607</b>	<b>86,985</b>	<b>78,399</b>	<b>70,465</b>	<b>83,584</b>	<b>108,527</b>	<b>136,025</b>	<b>126,727</b>	<b>139,968</b>	<b>147,111</b>	<b>153,611</b>	<b>141,532</b>	<b>139,214</b>

Source: Kenya Airports Authority

\*Provisional

**Table 19(b): Jomo Kenyatta international airport- Landed Passengers by Port of Origin**

PORTS/MONTH	2021											Number	
	Feb	Mar	Apr	May	Jun	Jul	Aug	Sep	Oct	Nov	Dec	Jan	Feb
Amsterdam	2,238	3,411	2,726	4,404	5,476	7,866	7,084	6,917	7,369	7,447	8,471	7,954	6,904
Brussels	0	0	0	0	16	0	0	0	0	0	0	0	0
London	2,750	2,837	1,004	5	153	749	1,111	1,464	4,714	7,034	11,884	8,709	9,296
Paris	1,262	966	969	1,600	4,334	6,985	5,817	4,743	6,551	5,851	7,382	6,763	6,520
Zurich	0	6	0	0	0	0	0	0	0	0	0	0	0
Other Europe	4,031	4,350	3,067	3,895	6,398	7,736	8,645	6,689	7,582	7,279	8,575	7,291	6,865
<b>Total Europe</b>	<b>10,281</b>	<b>11,570</b>	<b>7,766</b>	<b>9,904</b>	<b>16,377</b>	<b>23,336</b>	<b>22,657</b>	<b>19,813</b>	<b>26,216</b>	<b>27,611</b>	<b>36,312</b>	<b>30,717</b>	<b>29,585</b>
New York	264	507	306	927	2,279	2,732	2,044	1,145	951	1,252	2,789	1,819	1,467
Other North America	0	0	0	0	0	0	0	0	46	0	0	0	0
<b>Total North America</b>	<b>264</b>	<b>507</b>	<b>306</b>	<b>927</b>	<b>2,279</b>	<b>2,732</b>	<b>2,044</b>	<b>1,145</b>	<b>997</b>	<b>1,252</b>	<b>2,789</b>	<b>1,819</b>	<b>1,467</b>
Dubai	8,575	9,727	8,323	8,405	11,028	14,745	13,923	12,807	12,239	17,304	19,903	4,364	11,982
Jeddah	678	695	569	954	1,636	1,546	1,950	1,963	1,446	2,639	3,250	2,031	1,221
Other Middle East	5,988	7,223	5,694	7,916	12,934	18,200	21,110	19,197	15,072	13,195	24,411	15,968	14,980
<b>Total Middle East</b>	<b>15,241</b>	<b>17,645</b>	<b>14,586</b>	<b>17,275</b>	<b>25,598</b>	<b>34,491</b>	<b>36,983</b>	<b>33,967</b>	<b>28,757</b>	<b>33,138</b>	<b>47,564</b>	<b>22,363</b>	<b>28,183</b>
Mumbai	1,859	1,791	3,043	200	384	922	129	777	1,845	1,681	1,872	1,755	1,521
Bangkok	0	0	0	0	0	0	0	0	0	0	0	0	377
Other Far East	2,764	4,210	1,952	1,554	2,347	2,372	2,673	3,394	3,440	2,736	2,349	1,963	1,994
<b>Total Far East</b>	<b>4,623</b>	<b>6,001</b>	<b>4,995</b>	<b>1,754</b>	<b>2,731</b>	<b>3,294</b>	<b>2,802</b>	<b>4,171</b>	<b>5,285</b>	<b>4,417</b>	<b>4,221</b>	<b>3,718</b>	<b>3,892</b>
Addis Ababa	6,495	7,714	6,532	8,576	9,920	10,596	11,662	9,559	11,201	12,289	12,358	7,389	8,677
Bujumbura	522	483	477	458	495	880	1,132	1,089	1,137	982	1,038	912	1,135
Dar-es-alaam	2,560	2,484	2,626	2,968	3,606	3,425	4,270	4,164	4,830	5,482	6,724	5,728	6,512
Entebbe	4,130	5,300	4,648	5,357	4,876	4,150	5,384	5,933	6,904	7,041	7,680	6,973	7,855
Kigali	1,630	2,147	1,927	2,669	3,557	3,448	4,021	4,221	4,475	4,964	5,678	4,275	4,598
Kinshasa	1,492	1,735	1,815	1,587	1,149	896	1,347	1,601	2,421	2,504	2,117	918	1,479
Other East & Central Africa	1,102	1,428	1,363	1,030	1,550	1,591	1,526	1,661	2,030	2,187	2,719	2,446	2,981
<b>Total East &amp; Central Africa</b>	<b>17,931</b>	<b>21,291</b>	<b>19,388</b>	<b>22,645</b>	<b>25,153</b>	<b>24,986</b>	<b>29,342</b>	<b>28,228</b>	<b>32,998</b>	<b>35,449</b>	<b>38,314</b>	<b>28,641</b>	<b>33,237</b>
Mauritius	0	0	0	0	0	0	69	127	478	927	935	1,096	781
Seychelles	6	0	0	7	11	119	230	258	220	248	539	347	285
Zanzibar	991	972	993	1,362	1,558	2,140	2,510	2,384	3,224	3,847	3,823	3,881	4,225
Other Indian Ocean Islands	578	582	315	366	569	988	2,399	1,465	965	1,218	1,423	1,380	1,711
<b>Total Indian Ocean Islands</b>	<b>1,575</b>	<b>1,554</b>	<b>1,308</b>	<b>1,735</b>	<b>2,138</b>	<b>3,247</b>	<b>5,208</b>	<b>4,234</b>	<b>4,887</b>	<b>6,240</b>	<b>6,720</b>	<b>6,704</b>	<b>7,002</b>
Abidjan	507	396	350	196	0	431	374	267	431	577	913	666	769
Douala	0	0	0	48	0	1	0	84	0	0	134	0	11
Lagos	1,119	1,010	1,407	1,367	1,543	1,676	1,603	1,890	2,505	4,254	2,721	2,786	3,006
Accra	1,707	2,281	2,028	1,670	1,746	1,712	1,757	1,528	1,631	2,035	1,976	2,070	2,128
Other West Africa	753	650	267	157	288	279	467	782	320	605	447	606	589
<b>Total West Africa</b>	<b>4,086</b>	<b>4,337</b>	<b>4,052</b>	<b>3,438</b>	<b>3,577</b>	<b>4,099</b>	<b>4,201</b>	<b>4,551</b>	<b>4,887</b>	<b>7,471</b>	<b>6,191</b>	<b>6,128</b>	<b>6,503</b>
Johannesburg	3,127	4,026	4,045	4,847	4,470	4,748	4,958	5,003	5,764	6,487	9,288	6,429	6,077
Harare	591	790	978	808	1,281	1,022	809	957	1,093	1,445	1,648	870	1,451
Lilongwe	567	715	888	648	657	603	567	703	999	1,147	1,376	816	801
Lusaka	502	619	575	496	581	972	1,056	1,166	1,261	1,707	1,993	1,505	1,508
Cape Town	109	173	207	0	4	0	41	62	340	507	692	413	275
Other South Africa	1,209	1,203	1,004	1,156	1,118	1,316	1,396	1,983	2,085	2,924	2,422	1,700	2,337
<b>Total Southern Africa</b>	<b>6,105</b>	<b>7,526</b>	<b>7,697</b>	<b>7,955</b>	<b>8,111</b>	<b>8,661</b>	<b>8,827</b>	<b>9,874</b>	<b>11,542</b>	<b>14,217</b>	<b>17,419</b>	<b>11,733</b>	<b>12,449</b>
Cairo	754	1,042	961	972	963	1,785	1,967	1,704	1,562	2,095	2,109	1,837	2,031
Khartoum	8	2	9	1	0	31	0	5	0	0	292	263	182
Juba	1,518	2,023	1,896	2,080	2,301	3,580	2,838	2,956	3,126	3,411	5,002	2,535	2,581
Other North Africa	1	96	90	26	94	105	2	134	238	7	14	15	115
<b>Total North Africa</b>	<b>2,281</b>	<b>3,163</b>	<b>2,956</b>	<b>3,079</b>	<b>3,358</b>	<b>5,501</b>	<b>4,807</b>	<b>4,799</b>	<b>4,926</b>	<b>5,513</b>	<b>7,417</b>	<b>4,650</b>	<b>4,909</b>
<b>Other International</b>	<b>4,101</b>	<b>4,379</b>	<b>3,273</b>	<b>1,565</b>	<b>1,577</b>	<b>4,859</b>	<b>5,688</b>	<b>5,254</b>	<b>5,209</b>	<b>5,457</b>	<b>6,280</b>	<b>5,373</b>	<b>6,016</b>
<b>Total International</b>	<b>66,488</b>	<b>77,973</b>	<b>66,327</b>	<b>70,277</b>	<b>90,899</b>	<b>115,206</b>	<b>122,559</b>	<b>116,036</b>	<b>125,704</b>	<b>140,765</b>	<b>173,227</b>	<b>121,846</b>	<b>133,243</b>

Source: Kenya Airports Authority

\*Provisional



**Table 19(c): New Vehicle Registration**

Body Type	2021											Number
	Feb	Mar	April	May	Jun	Jul	Aug	Sep	Oct	Nov	Dec	2022 Jan
Saloons.....	521	659	513	475	685	753	774	736	686	794	937	663
Station Wagons.....	4,055	5,096	3,927	3,484	5,404	6,260	6,073	5,794	5,441	6,304	7,571	4,888
Vans.....	355	385	270	275	482	392	427	480	408	432	389	352
Pick Ups.....	101	163	123	53	108	101	93	82	78	227	144	166
Mini Buses.....	73	107	63	57	85	88	63	44	46	48	61	28
Buses.....	80	79	41	51	55	77	78	51	66	97	127	66
Lorries.....	635	657	549	483	588	588	619	704	595	664	507	516
Trailers.....	358	311	374	217	350	256	300	205	177	137	160	138
Motor Cycles.....	12,262	17,300	43,288	28,188	36,551	20,533	8,212	11,426	32,005	23,484	22,579	27,556
Three Wheelers.....	975	500	498	596	634	331	510	356	388	454	546	436
Wheeled Tractors.....	350	359	265	162	270	249	204	198	152	175	180	193
Others.....	664	714	619	572	683	781	595	617	452	701	501	417
<b>Totals.....</b>	<b>20,429</b>	<b>26,330</b>	<b>50,530</b>	<b>34,613</b>	<b>45,895</b>	<b>30,409</b>	<b>17,948</b>	<b>20,693</b>	<b>40,494</b>	<b>33,517</b>	<b>33,702</b>	<b>35,419</b>

Source: National Transport and Safety Authority

**Table 19(d): Passenger and Cargo Movement on the Standard Gauge Railway**

Metric tonnes														
Year	2021												2022*	
	JAN	FEB	MAR	APR	May	Jun	Jul	AUG	SEP	OCT	Nov	Dec	JAN	FEB
<b>Imports</b>														
Dry General-Containerized	919,137	779,537	842,021	739,722	735,020	702,897	721,768	771,931	674,580	676,027	828,753	736,482	771,317	798,388
Dry General- Conventional	80,678	260,641	265,459	235,942	254,784	183,565	244,138	144,253	152,977	190,095	186,757	185,632	157,240	128,152
Dry Bulk	843,199	713,814	917,329	576,876	634,296	968,488	389,531	580,380	494,272	528,142	446,675	323,135	466,464	536,532
P.O.L <sup>1</sup>	700,928	640,567	700,991	596,002	675,219	429,387	752,922	607,033	569,033	713,828	610,835	668,014	689,849	661,944
Other Bulk Liquids	104,773	86,948	57,172	137,618	82,648	59,460	80,350	97,777	92,240	122,576	82,515	94,685	46,148	86,538
<b>Sub-Total</b>	<b>2,648,715</b>	<b>2,481,507</b>	<b>2,782,972</b>	<b>2,286,160</b>	<b>2,381,967</b>	<b>2,343,797</b>	<b>2,188,709</b>	<b>2,201,374</b>	<b>1,983,102</b>	<b>2,230,668</b>	<b>2,155,535</b>	<b>2,007,948</b>	<b>2,131,018</b>	<b>2,211,554</b>
<b>Exports</b>														
Dry General-Containerized	307,117	319,425	409,106	349,474	343,946	322,395	332,581	363,608	301,805	269,919	329,253	294,305	336,695	361,111
Dry General-Conventional	1,917	5,884	5,142	6,038	11,286	2,546	749	5,316	2,001	6,810	2,868	4,692	1,643	2,397
Dry Bulk	23,000	64,000	41,000	-	65,000	30,000	10,000	43,650	50,000	62,000	-	66,400	32,300	6,400
P.O.L <sup>1</sup>	6,375	-	6,148	3,000	2,750	2,500	4,466	1,500	6,050	-	-	-	-	-
Bunkers	4,675	491	3,111	2,300	698	792	1,253	1,308	1,400	2,246	1,601	1,503	1,602	2
Other Bulk Liquids	-	-	-	-	-	-	-	-	-	-	-	-	-	-
<b>Sub-Total</b>	<b>343,084</b>	<b>389,800</b>	<b>464,507</b>	<b>360,812</b>	<b>423,680</b>	<b>358,232</b>	<b>349,049</b>	<b>415,382</b>	<b>361,256</b>	<b>340,975</b>	<b>333,722</b>	<b>366,900</b>	<b>372,240</b>	<b>369,910</b>
Transshipment	169,373	336,718	223,422	190,324	211,461	197,428	238,661	140,937	147,391	196,985	241,449	145,213	155,951	208,876
Restows	8,564	6,655	7,163	13,522	13,824	12,223	9,242	10,164	14,151	9,579	7,242	8,877	7,595	7,806
<b>Grand Total</b>	<b>3,169,736</b>	<b>3,214,680</b>	<b>3,478,064</b>	<b>2,850,818</b>	<b>3,030,932</b>	<b>2,911,680</b>	<b>2,785,661</b>	<b>2,767,857</b>	<b>2,505,900</b>	<b>2,778,207</b>	<b>2,737,948</b>	<b>2,528,938</b>	<b>2,666,804</b>	<b>2,798,146</b>

Source: Kenya Ports Authority

<sup>1</sup>Refers to Petroleum, Oil and Lubricants

**Table 19(e): Monthly Cargo Throughput at the port of Mombasa**

Metric tonnes													
Year	2021											2022*	
	FEB	MAR	APR	May	Jun	Jul	AUG	SEP	OCT	Nov	Dec	JAN	FEB
<b>Imports</b>													
Dry General-Containerized	779,537	842,021	739,722	735,020	702,897	721,768	771,931	674,580	676,027	828,753	736,482	771,317	798,388
Dry General- Conventional	260,641	265,459	235,942	254,784	183,565	244,138	144,253	152,977	190,095	186,757	185,632	157,240	128,152
Dry Bulk	713,814	917,329	576,876	634,296	968,488	389,531	580,380	494,272	528,142	446,675	323,135	466,464	536,532
P.O.L <sup>1</sup>	640,567	700,991	596,002	675,219	429,387	752,922	607,033	569,033	713,828	610,835	668,014	689,849	661,944
Other Bulk Liquids	86,948	57,172	137,618	82,648	59,460	80,350	97,777	92,240	122,576	82,515	94,685	46,148	86,538
<b>Sub-Total</b>	<b>2,481,507</b>	<b>2,782,972</b>	<b>2,286,160</b>	<b>2,381,967</b>	<b>2,343,797</b>	<b>2,188,709</b>	<b>2,201,374</b>	<b>1,983,102</b>	<b>2,230,668</b>	<b>2,155,535</b>	<b>2,007,948</b>	<b>2,131,018</b>	<b>2,211,554</b>
<b>Exports</b>													
Dry General-Containerized	319,425	409,106	349,474	343,946	322,395	332,581	363,608	301,805	269,919	329,253	294,305	336,695	361,111
Dry General-Conventional	5,884	5,142	6,038	11,286	2,546	749	5,316	2,001	6,810	2,868	4,692	1,643	2,397
Dry Bulk	64,000	41,000	-	65,000	30,000	10,000	43,650	50,000	62,000	-	66,400	32,300	6,400
P.O.L <sup>1</sup>	-	6,148	3,000	2,750	2,500	4,466	1,500	6,050	-	-	-	-	-
Bunkers	491	3,111	2,300	698	792	1,253	1,308	1,400	2,246	1,601	1,503	1,602	2
Other Bulk Liquids	-	-	-	-	-	-	-	-	-	-	-	-	-
<b>Sub-Total</b>	<b>389,800</b>	<b>464,507</b>	<b>360,812</b>	<b>423,680</b>	<b>358,232</b>	<b>349,049</b>	<b>415,382</b>	<b>361,256</b>	<b>340,975</b>	<b>333,722</b>	<b>366,900</b>	<b>372,240</b>	<b>369,910</b>
Transshipment	336,718	223,422	190,324	211,461	197,428	238,661	140,937	147,391	196,985	241,449	145,213	155,951	208,876
Restows	6,655	7,163	13,522	13,824	12,223	9,242	10,164	14,151	9,579	7,242	8,877	7,595	7,806
<b>Grand Total</b>	<b>3,214,680</b>	<b>3,478,064</b>	<b>2,850,818</b>	<b>3,030,932</b>	<b>2,911,680</b>	<b>2,785,661</b>	<b>2,767,857</b>	<b>2,505,900</b>	<b>2,778,207</b>	<b>2,737,948</b>	<b>2,528,938</b>	<b>2,666,804</b>	<b>2,798,146</b>

Source: Kenya Ports Authority

<sup>1</sup>Refers to Petroleum, Oil and Lubricants