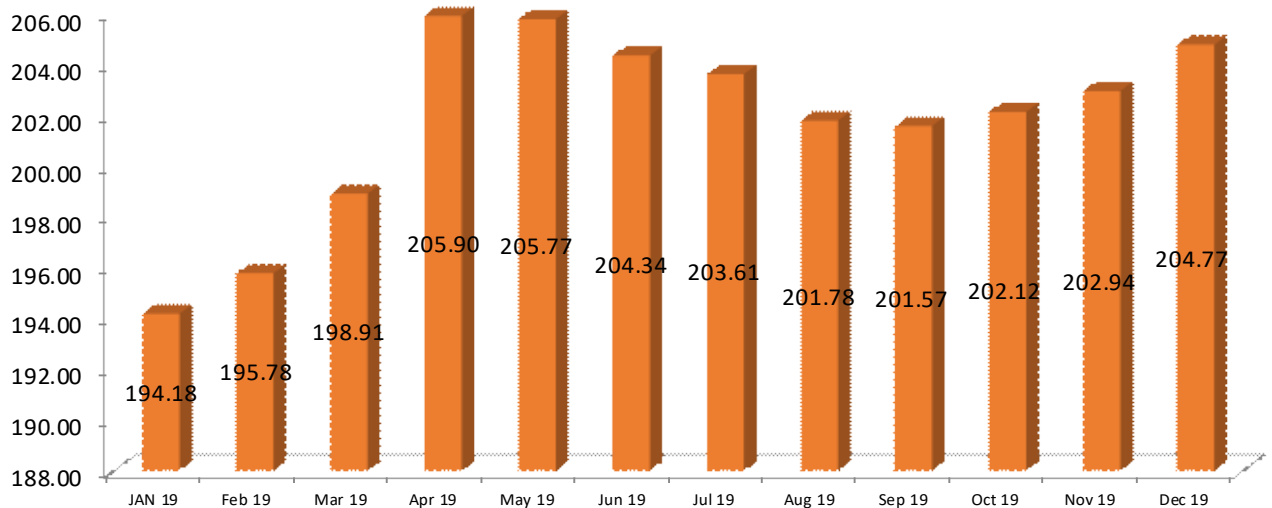


Leading Economic Indicators



Kenya Consumer Price Index



DECEMBER 2019

Contents

Table 1(a): Kenya Consumer Price Indices	7
Table 1(b): Kenya Inflation rate	8
Table 2: Mean Foreign Exchange rates of Kenyan Shilling against Selected Major Currencies at the end of the Month	10
Table 3: Interest rate (%)	11
Table 4: Nairobi Securities Exchange	12
Table 5(a): Money Supply	14
Table 5(b): Gross Foreign Exchange Reserves	15
Table 6: Coffee Sales and Prices*	16
Table 7: Tea Production and Auction Prices	17
Table 8: Cane Deliveries	18
Table 9(a): Average Monthly Retail Prices for Dry Maize, 2018 (per Kg)	19
Table 9(b): Average Monthly Retail Prices for Dry Maize, 2019 (per Kg)	20
Table 9(C): Average Monthly Retail Prices for Dry Beans, 2018 (per Kg)	21
Table 9(d): Average Monthly Retail Prices for Dry Beans, 2019 (per Kg)	22
Table 10: Exports of Coffee and Tea	23
Table 11: Monthly Exports of Fresh Horticultural Produce	24
Table 12: External Trade	25
Table 13(a): Major Destinations of Domestic Exports	26
Table 13(b): Domestic Exports by Broad Economic Category	27
Table 14 (a) Major Origins of Imports	28
Table 14(b): Imports by Broad Economic Category	29
Table 14 (c): Mobile Money Transactions	30
Table 14(d): International trade in ICT	31
Table 15(a): Local Electricity Generation by Source	32
Table 15(b): Generation and Consumption of Electricity	34
Table 15(c): Consumption of Petroleum Fuels	35
Table 15(d): Average Retail Prices for Selected Fuel Products within Nairobi	36
Table 15(e): Average Retail Prices for Selected Fuels in Kenya (National Average Retail Prices)	37
Table 15(f): Murban ADNOC Crude Oil Prices	39
Table 16: Value of Building Plans Approved	40
Table 17(a): Domestic Production of Sugar	41
Table 17(b): Production of Soft Drinks	42
Table 17(c): Production of Assembled Vehicles	43
Table 17(d): Production of Galvanized Sheets	44
Table 17(e): Cement Production and Consumption	45
Table 17(f): Milk Intakes in the Formal Sector	46
Table 18: Visitor Arrivals through J.K.I.A and M.I.A	47
Table 19(a): Jomo Kenyatta international airport-Embarked Passengers by Port of Destination	49
Table 19(b): Jomo Kenyatta international airport- Landed Passengers by Port of Origin	50
Table 19(c): New Vehicle Registration	51
Table 19(d): Passenger and Cargo Movement on the Standard Gauge Railway	52

LIST OF FIGURES

	Page Number
Fig. 1: Inflation rates	9
Fig. 2: End of Month Mean Exchange rate of Kenya Shillings against Major Selected Currencies	10
Fig. 3: Nairobi Securities Exchange 20 Share Index	13
Fig. 4: Coffee Sales at the Nairobi Coffee Exchange	16
Fig. 5: Tea Production	17
Fig. 6: Cane Deliveries	18
Fig. 7: Electricity Generation by Source	33
Fig. 8: Average Prices for Liquefied Petroleum Gas in Kenya ('000 KSh per 13 Kg cylinder)	38
Fig. 9: Milk Intake in the Formal Sector	46
Fig. 10: Visitor Arrivals through J.K.I.A and M.I.A	48

KEY HIGHLIGHTS

OVERVIEW

The Monthly Leading Economic Indicators report highlights changes in Consumer Price Indices (CPI) and inflation, interest and exchange rates. In addition, the report presents changes in indicators of international trade, agriculture, energy, manufacturing, building and construction, tourism and transport.

MACROECONOMIC INDICATORS

Consumer Price Index (CPI) increased from 202.94 points in November 2019 to 204.77 points in December 2019. The overall rate of inflation rose from 5.56 per cent to 5.82 per cent during the same period. In December 2019, the Kenyan Shilling appreciated against the major trading currencies except for the Sterling Pound and the SA Rand. The average yield rate for the 91-day Treasury bills, which is a benchmark for the general trend of interest rates rose from 6.65 per cent in November 2019 to 7.17 per cent in December 2019, while the inter-bank rate rose from 4.24 per cent to 6.04 per cent over the same period.

The Nairobi Securities Exchange (NSE) 20 share index decreased from 2,643 points in October 2019 to 2,619 points in November 2019 while the total number of shares traded increased from 451 million shares to 482 million shares during the same period. The total value of NSE shares traded increased from KSh 16.0 billion in October 2019 to KSh 17.0 billion in November 2019.

Broad money supply (M3), a key indicator for monetary policy formulation, decreased from KSh 3,517.54 million in October 2019 to KSh 3,461.98 million in November 2019. On the other hand, the value of Gross Foreign Exchange Reserves decreased from KSh 1,376.12 billion in October 2019 to KSh 1,318.41 billion in November 2019 while the value of Net Foreign Exchange Reserves dropped from KSh 858.46 billion in October 2019 to 797.58 billion in November 2019.



The quantity of coffee auctioned at the Nairobi Coffee Exchange was 1,116.76 MT in November 2019 while the average auction price stood at KSh 331.71 per kilogram over the same period. The quantity of produced tea increased from 35,533.31 MT in September 2019 to 46,305.41 MT in October 2019. The price of processed tea also rose from KSh 229.32 in September 2019 per kilogram to KSh 241.62 in October

2019. The quantity of cane deliveries increased from 373.76 thousand tonnes in September 2019 to 395.82 thousand tonnes in October 2019.

The quantity of cut-flower exports in September 2019 was 14,157.26 MT while its value of exports was KSh 6,611.52 million during the same period. The volume of vegetable exports decreased from 5,312.26 MT in August 2019 to 5,061.47 MT in September 2019. The value of vegetable exports decreased from KSh 2,173.38 million to KSh 1,679.77 million during the same period.

INTERNATIONAL TRADE

Volume of trade rose from KSh 209.46 billion in October 2019 to KSh 211.08 billion in November 2019. The value of total exports increased from KSh 50.39 billion in October 2019 to KSh 51.68 billion in November 2019 while the value of imports increased from KSh 159.17 billion in October 2019 to KSh 159.40 billion in November 2019. Domestic exports by Broad Economic Category (BEC) indicated that food and beverages was the main export category in November 2019 accounting for 47.52 per cent of exports, while non-food industrial supplies accounted for 20.81 per cent of the total exports.

Quantity of coffee exported decreased from 3,985.76 MT in October 2019 to 3,664.41 MT in November 2019 while its value dropped from KSh 1,390.06 million to KSh 1,175.66 million over the same period. The quantity of tea exported decreased from 45,373.90 MT in October 2019 to 43,650.47 MT in November 2019. The value of exported tea dropped from KSh 11,064.77 million to KSh 10,735.39 million over the same period.

Imports by BEC indicate that non-food industrial supplies was the main import category in November 2019 with a share of 30.43 per cent. Machinery & other capital equipment; fuel and lubricants; and transport equipment constituted 20.84, 15.27 and 13.18 per cent of the total value of imports, respectively. The share of foods and beverages Imports accounted for 9.64 per cent of the total imports.

ENERGY



Total local electricity generation decreased from 965.42 million KWh in November 2019 to 940.40 million KWh in December 2019. In the international market, the price of Murban crude oil increased from an average of US Dollars 60.88 per barrel in October 2019 to US Dollars 63.48 per barrel in November 2019.

The national average domestic retail oil prices of motor gasoline premium dropped from KSh 110.99 per litre in November 2019 to KSh 109.91 in December 2019. The price of light diesel oil dropped from KSh 105.10 in November 2019 to retail at KSh 102.28 in December 2019. On the other hand, the average price for Kerosene dropped from KSh 104.53 to retail at KSh 102.81 in December 2019. Charcoal prices averaged KSh 152.37 per 4KG tin in December 2019. The price of a 13-Kg cylinder of gas averaged KSh 2,101.16 in December 2019.

MANUFACTURING, BUILDING AND CONSTRUCTION



The quantity of cement produced decreased from 497,930 MT in October 2019 to 458,902 MT in November 2019. Consumption of cement rose from 479,177 MT in September 2019 to 492,670 MT in October 2019. Sugar production increased from 33,365 Metric tonnes in September 2019 to 35,259 Metric tonnes in October 2019. Production of assembled vehicles increased

from 603 units in September 2019 to 614 units in October 2019. Milk uptake in the formal sector rose from 63.21 million litres in September 2019 to 68.30 million litres in October 2019.

ICT, TOURISM AND TRANSPORT



The total number of mobile money transactions was 151.22 million in September 2019 while their value stood at KSh 365.91 billion over the same period. The value of imports for telecommunication equipment rose from KSh 617.21 million in September 2019 to KSh 2,539.21 million in October 2019.

The total number of visitors arriving through Jomo Kenyatta (JKIA) and Moi International Airports (MIA) increased from 121,070 persons in November 2019 to 132,019 persons in December 2019. The number of passengers who landed at Jomo Kenyatta International Airport (JKIA) decreased from 263,464 persons in October 2019 to 258,426 persons in November 2019, and passengers who embarked increased from 162,978 persons in October 2019 to 167,934 persons in November 2019. The total number of vehicles registered in September 2019 stood at 26,281 out of which 6,322 were Station Wagons.

Table 1(a): Kenya Consumer Price Indices
Kenya CPI: Base period February 2009=100

Group	Nairobi				Rest of Urban Areas	Kenya CPI
	Lower Income	Middle Income	Upper Income	Nairobi Combined		
2018						
January.....	191.45	159.79	156.07	182.48	187.57	185.47
February.....	194.37	160.71	157.31	184.85	190.20	188.00
March.....	198.16	161.43	157.56	187.76	192.62	190.62
April.....	200.32	161.79	157.57	189.41	195.82	193.18
May.....	202.10	163.00	157.92	191.00	197.89	195.05
June.....	200.15	162.99	159.61	189.66	195.88	193.31
July.....	197.39	162.48	159.58	187.54	194.43	191.59
August.....	195.70	164.10	163.82	186.87	195.90	192.18
September....	196.50	165.96	166.18	187.99	198.44	194.14
October.....	193.99	165.44	163.93	185.96	197.24	192.59
November.....	194.06	165.92	164.01	186.14	196.53	192.25
December.....	195.33	167.16	166.77	187.46	197.75	193.51
2019						
January.....	197.09	168.04	166.21	188.91	197.87	194.18
February.....	199.65	168.68	165.89	190.90	199.19	195.78
March.....	204.40	170.25	167.16	194.75	201.83	198.91
April.....	213.25	173.05	168.84	201.87	208.73	205.90
May.....	211.34	172.81	168.62	200.43	209.51	205.77
June.....	209.87	172.82	168.82	199.38	207.82	204.34
July.....	209.49	172.86	172.86	199.27	206.65	203.61
August.....	206.77	171.90	172.59	197.07	205.09	201.78
September....	206.40	171.96	172.66	196.81	204.90	201.57
October.....	207.20	172.21	172.40	197.44	205.40	202.12
November.....	208.03	172.85	172.70	198.21	206.25	202.94
December.....	210.84	174.43	175.65	200.73	207.60	204.77

Notes

1. Nairobi Lower Income group - Households spending less than KSh 23,670 in October 2005

2. Nairobi Middle Income Group- Households spending between KSh 23,671 to KSh 119,999 in October 2005

3. Nairobi Upper Income Group - Households spending above KSh 120,000 in October 2005

Rest of Urban areas includes Mombasa, Malindi, Machakos, Nyeri, Thika, Nakuru, Kisii, Kisumu, Eldoret, Nyahururu, Garissa and Bungoma.

Table 1(b): Kenya Inflation rate

Period	Inflation Rates					
	Nairobi				Rest of Urban Areas	Kenya CPI
	Lower Income	Middle Income	Upper Income	Combined		
2018						
January.....	6.49	6.35	3.91	6.37	3.80	4.83
February.....	5.75	5.77	4.18	5.70	3.62	4.46
March.....	5.36	5.37	4.15	5.33	3.40	4.18
April.....	4.36	4.19	4.14	4.32	3.33	3.73
May.....	4.85	4.61	4.23	4.78	3.40	3.95
June.....	5.52	5.64	5.75	5.55	3.43	4.28
July.....	5.30	5.38	5.46	5.32	3.71	4.35
August.....	3.60	5.77	7.76	4.19	3.94	4.04
September....	4.40	6.82	9.42	5.07	6.13	5.70
October.....	3.07	6.02	7.15	3.82	6.69	5.53
November.....	3.42	6.18	6.93	4.11	6.59	5.58
December.....	3.50	6.17	7.86	4.21	6.73	5.71
2019						
January.....	2.94	5.16	6.50	3.53	5.50	4.70
February.....	2.71	4.96	5.46	3.27	4.73	4.14
March.....	3.15	5.46	6.10	3.72	4.78	4.35
April.....	6.45	6.96	7.16	6.58	6.59	6.58
May.....	4.57	6.02	6.77	4.94	5.87	5.49
June.....	4.85	6.03	5.77	5.13	6.10	5.70
July.....	6.13	6.39	8.33	6.26	6.29	6.27
August.....	5.66	4.75	5.35	5.46	4.69	5.00
September....	5.03	3.61	3.90	4.69	3.25	3.83
October.....	6.81	4.10	5.17	6.17	4.14	4.95
November.....	7.20	4.17	5.30	6.48	4.94	5.56
December.....	7.94	4.35	5.33	7.08	4.98	5.82

Fig. 1: Inflation rates

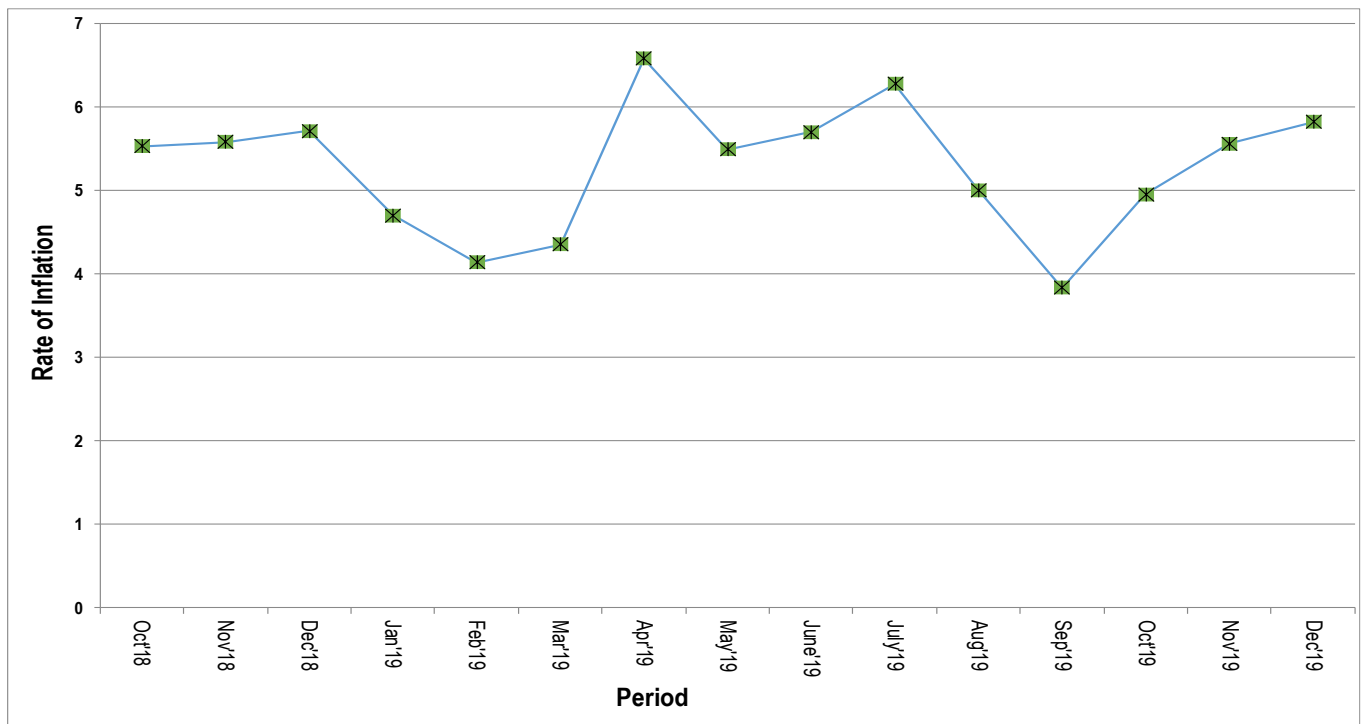


Table 2: Mean Foreign Exchange rates of Kenyan Shilling against Selected Major Currencies at the end of the Month

Year	2018		2019											
Currency	Nov	Dec	Jan	Feb	Mar	Apr	May	June	July	Aug	Sep	Oct	Nov	Dec
1 US Dollar.....	102.36	102.29	115.95	100.23	100.36	101.07	101.14	101.69	103.16	103.30	103.80	103.67	102.39	101.50
1 Pound Sterling...	132.08	129.74	130.76	130.29	132.29	131.77	130.17	128.82	128.92	125.59	128.16	130.65	131.96	132.88
1 Euro.....	116.35	116.45	115.95	113.68	113.51	113.58	113.19	114.73	115.83	114.96	114.35	114.41	113.22	112.67
100 Japanese Yen.	90.35	90.99	93.18	90.89	90.26	90.59	91.9	94.1	95.35	97.12	96.68	95.88	94.09	92.96
1 SA Rand.....	7.25	7.22	7.29	7.27	6.87	7.13	7.02	6.95	7.35	6.83	6.99	6.94	6.91	7.02
USHS/KES.....	36.54	36.38	36.45	36.64	36.92	36.97	37.22	36.72	35.84	35.76	35.41	35.65	36.12	36.21
TSHS/KES.....	22.46	22.49	22.72	23.23	23.36	22.88	22.75	22.61	22.30	22.26	22.15	22.19	22.49	22.65

Source: Central Bank of Kenya

Fig. 2: End of Month Mean Exchange rate of Kenya Shillings against Major Selected Currencies

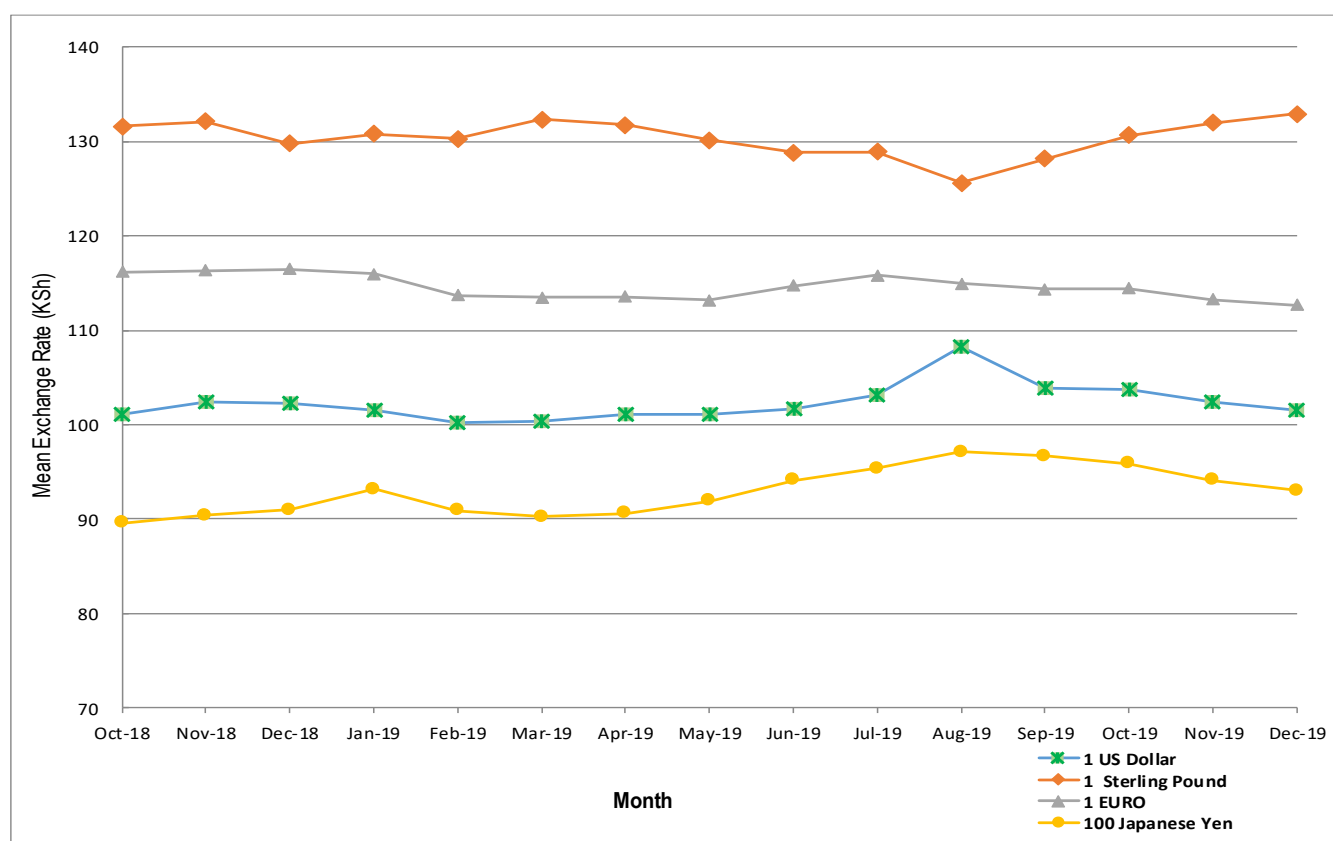


Table 3: Interest rate (%)

Month/Year	Average Yield Rates 91 – Days Treasury Bills	Central Bank Rate	Rates for Commercial Banks Loans and Advances (Weighted Average)	Overdraft Rates	Average Deposit Rate	Inter – Bank Rates	Savings (Commercial Banks Rates)
2018							
January	8.04	10.00	13.65	13.61	8.26	6.21	6.97
February	8.03	10.00	13.68	13.75	8.25	5.12	7.01
March	8.02	9.50	13.49	13.40	8.16	4.90	6.85
April	8.00	9.50	13.24	13.29	8.17	5.38	6.72
May	7.96	9.50	13.25	13.30	8.08	4.70	6.64
June	7.87	9.50	13.22	13.23	8.04	5.03	6.60
July	7.69	9.00	13.10	13.16	8.01	4.82	6.53
August	7.64	9.00	12.78	12.90	7.78	6.52	6.52
September	7.64	9.00	12.66	12.52	7.76	4.28	6.33
October	7.56	9.00	12.61	12.42	7.63	3.48	5.70
November	7.36	9.00	12.55	12.11	7.41	4.09	5.38
December	7.34	9.00	12.51	12.17	7.41	8.15	5.13
2019							
January	7.19	9.00	12.50	12.15	7.34	3.32	5.14
February	7.02	9.00	12.47	12.13	7.28	2.51	5.16
March	7.08	9.00	12.51	12.13	7.22	3.73	5.05
April	7.39	9.00	12.50	12.15	7.17	4.21	4.75
May	7.17	9.00	12.47	12.13	7.20	5.61	4.71
June	6.91	9.00	12.47	12.12	7.19	3.00	4.50
July	6.62	9.00	12.39	11.89	6.97	2.28	4.97
August	6.42	9.00	12.47	11.97	6.91	3.70	4.77
September	6.35	9.00	12.47	11.99	6.98	6.66	4.58
October	6.38	9.00				6.86	
November	6.65	8.50				4.24	
December	7.17	8.50				6.04	

Table 4: Nairobi Securities Exchange

Month	Number of Transactions	Number of Shares (Million)	Value of Shares (Million KSh)	NSE 20 Share Index
2018				
January.....	25,591	862	20,340	3,737
February.....	24,783	572	17,919	3,750
March.....	32,645	704	22,890	3,854
April.....	28,483	449	15,076	3,735
May.....	30,196	677	18,377	3,333
June.....	24,798	453	13,688	3,286
July.....	24,360	323	9,736	3,320
August	25,279	329	10,243	3,203
September.....	25,311	392	11,950	2,876
October.....	26,295	843	16,890	2,820
November.....	22,252	407	10,713	2,797
December.....	17,640	320	7,830	2,801
2019				
January.....	24,798	557	16,200	2,983
February.....	23,444	425	14,173	2,916
March.....	20,808	448	15,917	2,846
April.....	18,923	295	9,865	2,797
May.....	23,308	452	12,494	2,677
June.....	18,211	334	10,538	2,633
July.....	20,683	374	11,453	2,628
August	18,893	322	8,652	2,468
September.....	19,481	368	10,558	2,432
October.....	19,944	451	16,019	2,643
November.....	23,231	482	17,021	2,619

Source: Nairobi Securities Exchange Limited

Base Jan 1966=100

Fig. 3: Nairobi Securities Exchange 20 Share Index

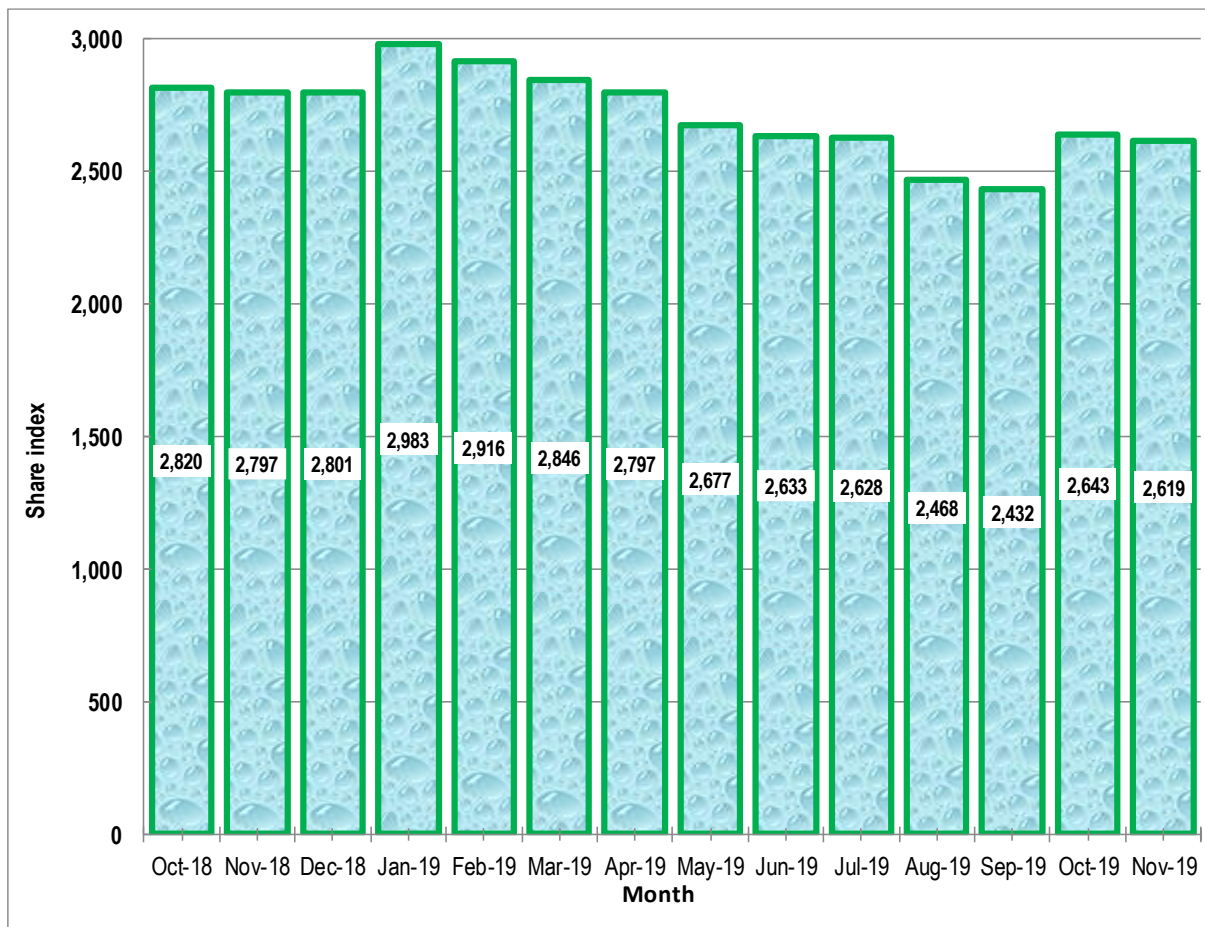


Table 5(a): Money Supply

KSh million

As at end of month	Money (M1)*	Quasi – Money banks & NBFIs	Total (M2)***	Foreign currency deposits ¹	Broad Money (M3)****	% Change
2018						
January	1,363,106	1,180,536	2,543,642	482,460	3,026,102	-0.15
February	1,383,959	1,177,326	2,561,286	462,231	3,023,516	-0.09
March	1,361,593	1,199,345	2,560,938	474,458	3,035,395	0.39
April	1,405,903	1,192,621	2,598,525	476,288	3,074,813	1.30
May	1,400,363	1,220,683	2,621,046	521,025	3,142,070	2.19
June	1,425,556	1,256,322	2,681,878	580,762	3,262,639	3.84
July	1,434,616	1,270,606	2,705,222	573,568	3,278,791	0.50
August	1,393,104	1,305,655	2,698,759	560,966	3,259,725	-0.58
September	1,379,544	1,305,377	2,684,921	576,160	3,261,081	0.04
October	1,436,428	1,283,358	2,719,786	553,218	3,273,004	0.37
November	1,409,609	1,289,822	2,699,431	569,611	3,269,041	-0.12
December	1,477,526	1,278,447	2,755,973	581,859	3,337,832	2.10
2019						
January	1,464,557	1,293,082	2,757,639	586,644	3,344,283	0.19
February	1,461,012	1,287,545	2,748,557	584,920	3,333,476	-0.32
March	1,520,263	1,318,146	2,838,409	576,915	3,415,324	2.46
April	1,501,685	1,323,773	2,825,458	578,930	3,404,388	-0.32
May	1,495,747	1,342,542	2,838,289	577,947	3,416,236	0.35
June	1,575,496	1,368,241	2,943,737	620,493	3,564,230	4.33
July	1,510,782	1,381,836	2,892,618	616,817	3,509,435	-1.54
August	1,469,142	1,388,187	2,857,313	608,163	3,472,769	-1.04
September	1,459,729	1,406,263	2,865,991	607,399	3,473,390	0.02
October	1,479,014	1,413,154	2,892,168	625,373	3,517,540	1.27
November	1,460,223	1,389,210	2,849,432	612,545	3,461,978	-1.58

Source: Central Bank of Kenya

* Currency in circulation less cash in banks plus all demand deposits except those of National & County government, Banks, non-residents and foreign currency deposits

** All other deposits in commercial banks, except those of National government.

***Broad money (M2) is the sum of M1, Quasi money in Banks and Quasi money in NBFIs less NBFi Quasi Money Deposits in Banks

**** Broad Money (M3) includes M2 and Foreign currency deposits

M2=(M1+QM-NBFIs)

M3=M2+FCD

¹ Revised All 2014-2018 Numbers revised and available on request

Table 5(b): Gross Foreign Exchange Reserves

KSh Million*							
Month	Central Monetary Authority		Total	Foreign Assets		Gross Total	Net of Foreign Exchange Liabilities ^
	Central Bank	National Government**		Commercial Banks	NBFI		
2018							
January	763,804	2,117	765,921	221,727	253	987,901	527,201
February	763,623	2,102	765,725	226,187	1,742	993,654	517,758
March	932,536	2,081	934,617	251,769	269	1,186,655	701,293
April	946,662	2,046	948,708	257,550	1,477	1,207,735	725,221
May	939,174	2,036	941,210	267,456	1,608	1,210,275	726,442
June	901,467	2,036	903,504	318,094	229	1,221,826	760,510
July	915,171	1,998	917,169	317,414	747	1,235,331	759,525
August	893,032	1,997	895,029	310,616	339	1,205,984	735,056
September	885,090	1,995	887,085	335,009	430	1,222,524	745,193
October	862,908	1,992	864,900	317,149	172	1,182,221	687,480
November	846,765	2,009	848,774	333,312	168	1,182,254	693,798
December	849,909	2,009	851,917	334,655	372	1,186,944	716,108
2019							
January	859,627	2,001	861,629	317,362	226	1,179,217	708,650
February	855,490	1,981	857,471	316,684	571	1,174,726	713,045
March	857,149	1,982	859,130	333,816	146	1,193,092	721,965
April	848,279	1,989	850,268	361,257	193	1,211,717	746,093
May	1,055,911	1,975	1,057,886	330,133	122	1,388,141	936,362
June	1,048,595	1,995	1,050,590	361,254	207	1,412,052	941,897
July	1,030,383	2,020	1,032,403	357,141	95	1,389,640	902,678
August	990,215	2,004	992,219	370,055	157	1,362,431	870,469
September	977,691	2,004	979,695	378,320	578	1,358,593	837,448
October	962,187	2,014	964,200	411,670	251	1,376,122	858,462
November	938,147	1,997	940,145	377,509	760	1,318,414	797,584

Source: Central Bank of Kenya

* Includes encumbered reserves

**National Government includes reserve position in the Fund and deposits with Crown Agents.

^ Revised

Table 6: Coffee Sales and Prices*

Month	2018			2019***		
	QUANTITY (MT)	PRICE (\$ /kg)	PRICE (Ksh /kg)	QUANTITY (MT)	PRICE (\$ /kg)	PRICE (Ksh /kg)
January	5,111.90	5.13	527.24	4,166.77	4.46	452.57
February	5,832.22	5.69	577.36	5,723.84	4.49	449.47
March	4,913.15	4.73	478.14	4,057.03	2.97	298.47
April	4,194.24	3.03	304.59	5,307.40	2.01	203.37
May	4,619.51	2.15	216.55	4,084.00	1.98	200.58
June**	-	-	-	2,020.80	1.89	191.97
July	1,221.20	3.54	356.73	671.60	1.91	196.94
August	2,234.56	3.35	337.30	1,646.63	2.10	216.51
September	2,299.09	2.86	288.68	1,521.79	2.24	232.60
October	2,493.24	3.17	320.55	2,540.68	2.51	259.85
November	2,334.41	3.60	368.16	1,116.76	3.24	331.71
December	1,577.04	3.95	403.58			
Annual	36,830.56	3.43	348.24	32,857.30	2.71	275.82

Source: Coffee Directorate

* Auction Price

NB: MT denotes Metric Tonnes

*** Provisional

** Nairobi Coffee Exchange was in recess for most of June 2017 and June 2018

Fig. 4: Coffee Sales at the Nairobi Coffee Exchange

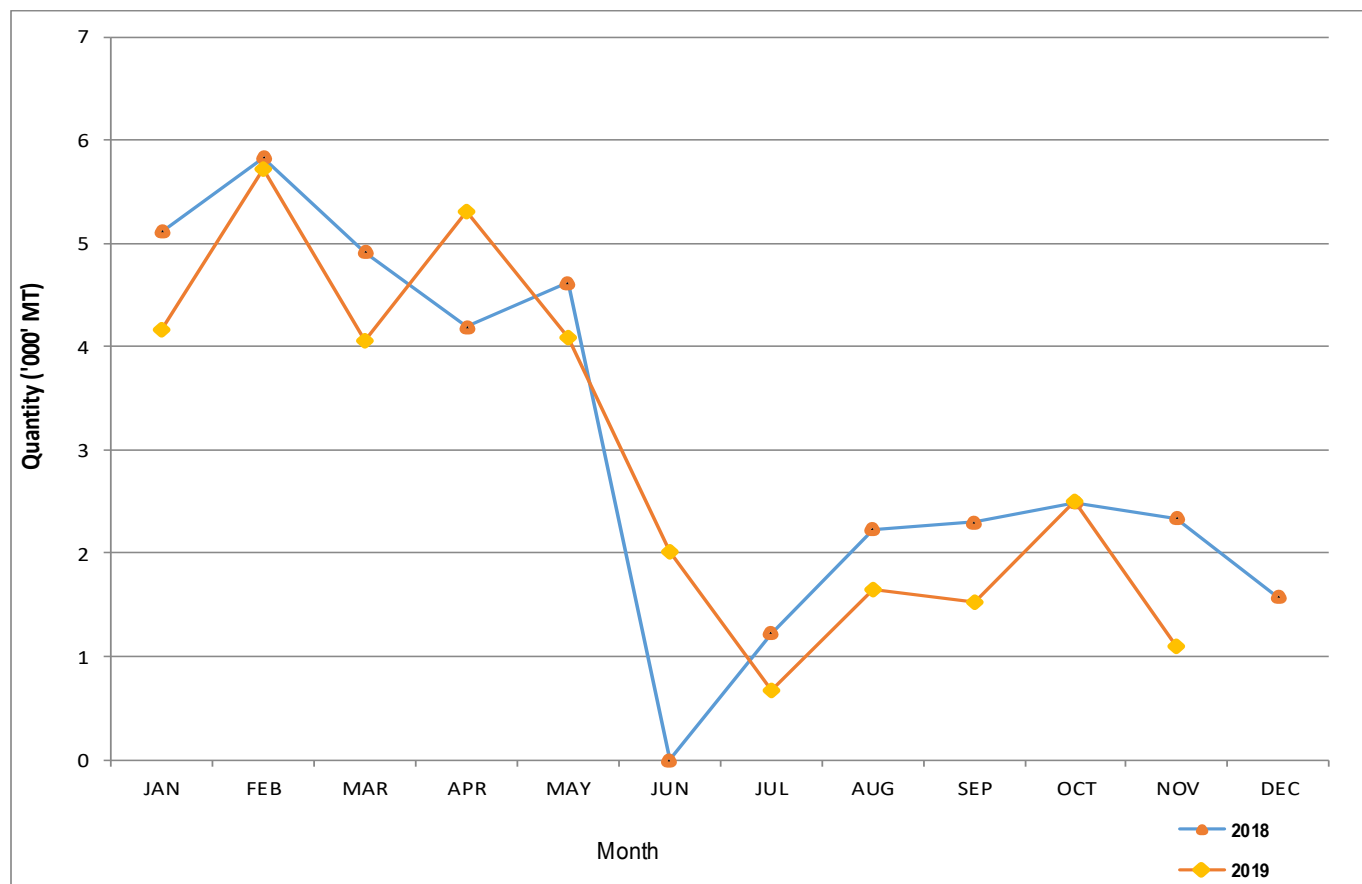


Table 7: Tea Production and Auction Prices

Months	2018			2019*		
	QUANTITY (MT)	PRICE (\$/Kg)	PRICE (KSh/Kg)	QUANTITY (MT)	PRICE (\$/Kg)	PRICE (KSh/Kg)
January	40,834.42	2.96	304.42	48,386.47	2.30	233.94
February	27,939.13	2.98	302.28	31,445.08	2.16	216.03
March	30,986.83	2.81	283.89	26,461.70	2.13	214.01
April	44,579.88	2.67	268.15	26,131.30	2.26	228.05
May	43,355.79	2.61	262.95	37,758.64	2.39	241.59
June	43,299.06	2.55	257.40	42,425.02	2.16	219.02
July	35,278.16	2.49	250.84	31,458.49	1.99	205.43
August	37,432.60	2.40	241.20	37,200.22	2.11	217.92
September	42,530.86	2.41	243.34	35,533.31	2.21	229.32
October	49,283.64	2.42	244.21	46,305.41	2.33	241.62
November	45,648.57	2.36	241.52			
December	51,829.79	2.30	235.55			
Annual	492,998.72	2.58	261.31	363,105.64	2.20	224.69

Source: Tea Directorate

MT denotes Metric Tonnes

*Provisional

Fig. 5: Tea Production

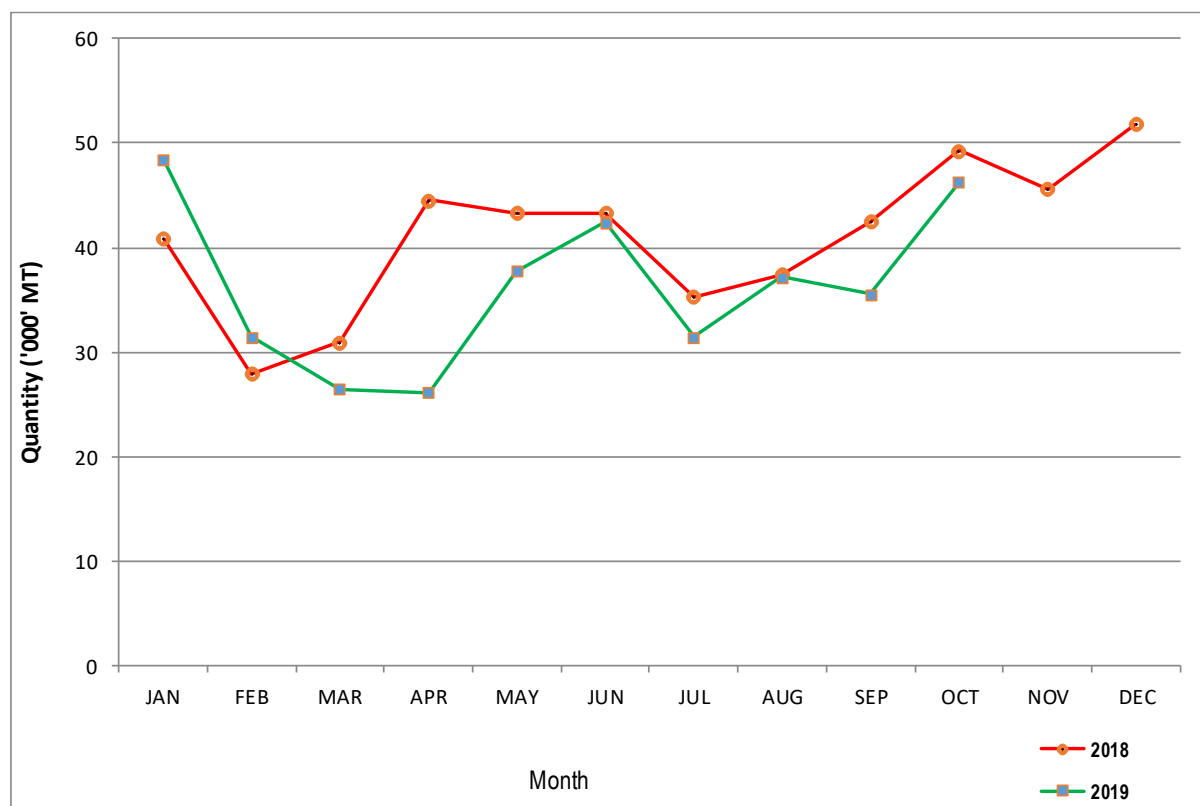


Table 8: Cane Deliveries

000 Metric Tonnes						
Month	2014	2015	2016	2017	2018	2019*
January	693.47	647.34	670.46	581.60	687.52	535.52
February	620.51	585.21	640.51	519.40	555.88	473.33
March	645.88	645.07	757.06	470.73	445.17	476.23
April	543.85	521.26	576.69	304.79	330.57	372.82
May	533.67	529.33	514.66	231.97	283.90	341.92
June	523.75	544.01	629.67	248.94	312.09	257.40
July	593.20	558.98	609.30	244.69	377.37	254.10
August	547.65	585.74	564.44	173.26	440.10	362.10
September	533.43	619.35	568.36	290.70	434.91	373.76
October	467.11	550.81	568.83	452.81	497.93	395.82
November	369.34	496.55	540.69	571.21	475.53	
December	405.79	565.57	520.17	521.65	418.89	
Total	6,477.65	6,849.22	7,160.84	4,611.75	5,259.85	3,843.00

Source : Sugar Directorate

* Provisional

Fig. 6: Cane Deliveries

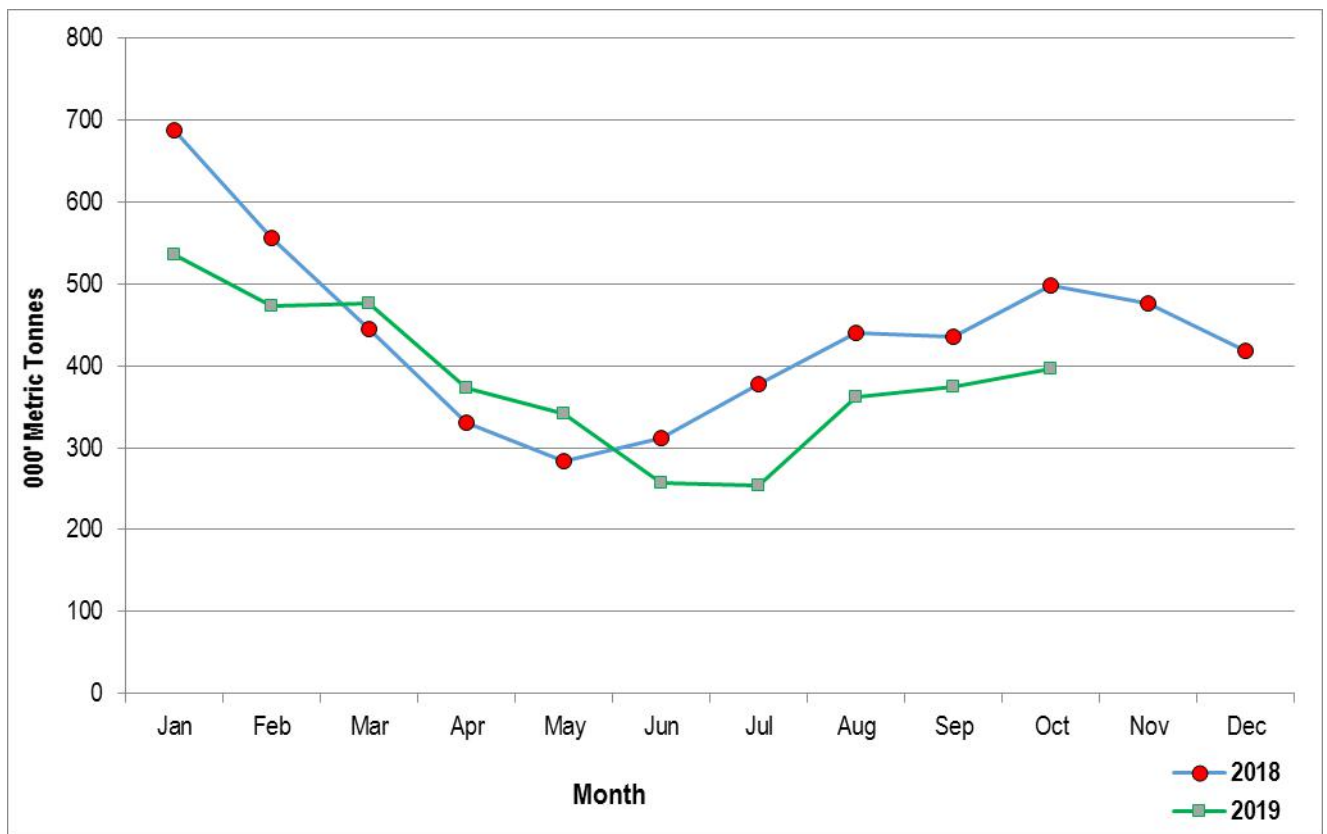


Table 9(a): Average Monthly Retail Prices for Dry Maize, 2018 (per Kg)

Month/Town	Jan	Feb	Mar	Apr	May	June	July	Aug	Sep	Oct	Nov	Dec
Akala.....	36.57	-	-	-	-	-	-	34.31	34.53	33.61	39.22	38.84
Bomet.....	34.50	32.00	32.00	31.00	27.60	31.00	32.00	28.00	28.50	25.60	26.00	-
Bondo.....	32.22	29.54	27.81	27.18	29.68	29.62	27.92	-	-	-	-	-
Bumala.....	-	-	-	-	40.48	31.24	-	-	-	-	-	-
Bungoma Town.....	-	-	-	-	-	-	28.01	22.07	-	-	-	-
Bura Tana.....	39.00	36.25	40.00	50.00	48.33	50.00	46.67	50.00	-	-	-	-
Burua.....	54.55	54.55	60.00	60.00	54.55	54.55	54.55	-	-	-	-	-
Burn Forest.....	28.00	28.00	28.00	35.00	47.22	35.00	35.00	30.63	-	25.00	25.00	21.25
Busia Town.....	-	-	-	-	31.82	30.77	-	-	-	-	-	-
Butere.....	29.17	29.17	30.00	29.50	23.60	24.00	22.71	-	-	-	-	-
Chepsionoi.....	32.40	29.04	30.79	31.69	31.03	31.20	25.68	23.35	23.08	-	21.80	22.53
Cheptula.....	33.73	33.33	33.33	33.33	30.95	29.76	26.98	23.81	-	23.81	23.81	24.60
Daraja Mbili.....	-	29.09	31.17	-	-	-	-	28.83	-	23.81	25.30	24.93
Eldoret.....	-	30.50	32.00	38.93	41.89	40.00	40.00	35.63	-	25.00	25.00	25.00
Embu Town.....	40.00	40.91	40.91	36.36	31.82	32.99	30.50	-	24.71	23.34	22.73	26.14
Endebess.....	25.00	25.00	25.00	25.00	-	-	-	-	-	-	-	-
Engare.....	-	-	-	-	-	32.00	38.00	-	16.00	17.60	19.00	17.00
Gakoromere.....	38.89	37.41	38.20	36.42	32.59	33.33	33.33	27.78	-	27.78	31.94	33.33
Garissa Town.....	-	-	-	-	-	50.00	55.71	60.00	60.00	50.00	50.00	50.00
Gatundu.....	-	-	-	50.00	50.00	50.00	44.58	43.13	-	-	-	-
Gikomba.....	52.38	55.00	60.00	60.00	57.14	57.14	57.14	-	-	-	-	-
Githurai.....	-	-	-	55.00	54.00	55.00	53.33	51.25	-	-	-	-
Harambee.....	-	-	-	-	-	-	-	-	-	19.05	-	-
Hola.....	38.75	36.25	36.67	50.00	50.00	50.00	50.00	50.00	-	-	-	-
Homabay.....	-	-	-	-	-	-	27.57	21.74	-	-	-	-
Iciara.....	-	-	-	-	-	-	-	-	18.47	17.17	21.40	26.19
Isiolo Town.....	-	-	-	50.00	50.00	-	-	46.75	48.50	39.00	33.33	32.50
Iten.....	-	35.00	33.33	31.88	28.73	38.06	27.24	33.33	-	20.28	18.73	15.63
Kabarnet.....	33.33	38.89	-	44.44	44.44	41.67	38.89	38.89	-	-	-	-
Kajiado.....	-	50.00	45.00	50.00	50.00	46.00	43.64	50.00	50.00	-	40.00	46.00
Kakamega.....	35.00	35.00	35.00	37.50	36.00	33.73	27.50	-	-	-	-	-
Kalundu.....	42.50	35.00	35.00	35.00	30.00	30.00	30.00	30.00	32.50	-	26.67	26.67
Kandara.....	-	-	-	-	-	-	-	-	-	40.00	-	-
Kangemi.....	52.50	60.00	60.00	57.14	52.38	52.38	52.38	-	-	-	-	-
Kapsabet.....	31.53	30.79	30.49	31.08	30.64	30.41	24.44	23.39	21.43	-	20.65	22.27
Karatina.....	44.72	39.83	38.10	38.14	42.47	41.98	40.95	42.37	-	30.81	-	15.45
Kawangware.....	50.00	52.50	52.50	55.00	55.00	55.00	55.00	-	-	-	-	-
Kegonga.....	23.46	24.64	25.00	28.26	27.54	26.09	27.42	26.09	-	22.83	-	22.28
Kehacha.....	28.26	26.63	25.00	29.13	27.17	26.09	29.45	24.77	-	23.91	22.83	21.74
Kerugoya.....	45.54	42.63	40.95	40.26	36.26	32.27	31.82	30.95	29.52	25.11	33.18	33.37
Kiambu.....	-	-	-	45.00	45.00	43.75	45.00	43.75	-	-	-	-
Kianjai.....	-	38.34	33.61	36.11	36.67	27.78	27.78	24.44	-	27.78	27.78	-
Kibirigo.....	-	-	-	-	31.82	-	-	29.36	-	-	23.91	-
Kiboswa.....	39.13	-	-	-	-	-	-	-	-	-	-	-
Kilgoris.....	-	-	-	23.00	20.40	21.33	24.00	-	21.00	20.00	17.00	26.00
Kimulot.....	32.00	32.00	32.00	28.00	28.00	-	28.00	28.00	24.00	24.00	25.00	-
Kipkaren.....	-	28.00	28.00	34.22	42.56	35.00	34.58	30.63	-	25.00	25.00	21.25
Kiriaini.....	-	-	-	-	35.00	35.00	33.75	26.25	25.00	25.00	28.75	30.00
Kiriiri.....	-	-	-	-	-	-	-	-	25.72	22.77	25.15	27.77
Kitale.....	29.17	29.17	29.17	29.17	28.94	26.39	27.08	24.40	-	37.60	-	-
Kongowea.....	41.25	42.50	41.25	40.00	40.00	-	-	-	32.50	34.00	31.25	35.00
Korokocho.....	52.38	52.38	57.14	60.00	60.00	60.00	60.00	-	-	-	-	-
Kutus.....	37.27	37.50	36.17	35.83	37.23	31.16	31.82	32.72	31.49	31.13	33.75	33.75
Kwale.....	48.75	50.00	51.40	55.00	54.75	55.00	45.00	40.00	-	40.00	40.00	46.50
Limuru.....	-	-	-	41.67	43.33	45.00	45.00	45.00	-	-	-	-
Lodwar.....	63.75	61.21	61.91	60.00	56.90	-	-	-	-	-	-	-
Machakos Town.....	-	40.00	40.00	40.00	40.00	38.33	40.00	37.50	40.00	35.00	30.00	30.00
Majengo.....	53.33	51.67	46.25	45.00	42.00	-	-	-	41.25	32.00	40.00	40.00
Makuyu.....	-	-	-	40.00	36.25	35.00	34.38	32.50	27.50	-	29.15	25.00
Marsabit Town.....	38.19	39.25	41.20	40.00	40.00	40.00	40.00	40.00	40.00	40.00	40.00	35.00
Mbale.....	38.10	38.10	33.33	33.33	33.33	30.95	26.98	23.81	-	21.43	21.43	23.81
Migori.....	30.43	28.57	26.36	30.43	28.69	28.26	29.13	23.14	-	22.17	21.74	23.37
Mulot.....	30.00	28.00	31.00	32.00	28.00	26.00	26.00	23.00	22.50	23.60	24.00	24.00
Mumias.....	29.17	29.69	31.77	32.29	27.03	28.00	23.44	-	-	-	-	-
Mundata.....	-	-	-	29.76	28.97	28.57	26.98	23.81	-	23.02	24.29	23.81
Muthithi.....	-	-	-	-	35.00	33.75	32.50	30.00	22.50	-	26.25	30.00
Muthurwa.....	40.67	39.07	37.56	52.50	55.00	55.00	55.00	-	-	-	-	-
Muthurwa Narok.....	-	-	-	40.00	33.20	32.00	36.67	-	-	40.80	40.00	16.00
Mwembe Tayari.....	51.25	51.25	46.25	45.00	41.00	-	-	-	40.00	36.00	50.00	50.00
Nakuru Town.....	50.00	55.00	53.75	61.78	64.45	62.97	32.10	27.78	27.78	-	22.22	33.33
Nanyuki.....	-	44.12	52.57	40.70	58.94	44.12	41.77	38.36	-	39.00	34.01	33.26
Ndaragwa.....	-	54.41	-	-	-	-	-	-	-	-	-	-
Ngiya.....	32.21	30.45	-	27.27	28.40	29.17	27.53	34.20	33.99	34.02	38.46	38.85
Ndondori.....	-	-	-	40.00	-	-	-	-	-	-	-	-
Nyabite.....	-	-	-	-	30.43	-	29.38	26.09	-	-	22.92	-
Nyahururu.....	-	60.99	52.72	44.44	64.89	55.65	49.92	27.78	-	-	-	27.72
Nyeri.....	50.00	50.00	47.50	42.37	42.86	40.48	42.86	40.97	-	27.92	22.67	15.93
Oi Kalou.....	-	59.05	60.00	50.00	50.00	50.00	50.00	50.00	-	50.00	35.00	41.67
Oyugis.....	-	-	-	-	-	-	25.00	-	-	-	-	-
Riochanda.....	-	-	-	-	25.00	-	24.78	20.58	-	-	23.91	-
Runyenjes.....	38.96	38.07	36.36	31.82	29.55	27.70	27.19	-	25.00	19.54	21.86	22.73
Sagana.....	40.53	42.57	43.03	38.24	38.22	35.00	-	35.58	32.46	26.02	33.56	34.17
Sega.....	53.00	51.25	45.00	45.00	40.00	-	-	-	42.50	34.00	37.50	36.25
Siakago.....	41.82	43.18	43.18	37.88	37.66	31.82	27.92	-	25.03	22.76	23.27	26.45
Siaya.....	37.70	35.67	33.27	-	-	35.90	30.30	-	33.99	33.83	38.26	38.85
Sibanga.....	27.08	27.08	29.17	29.17	-	-	-	-	-	-	-	-
Soko Mjinga.....	-	-	-	30.43	27.18	-	26.09	21.74	21.74	-	-	-
Sotik.....	36.00	32.00	32.00	33.00	30.40	28.00	29.60	30.00	25.00	24.00	24.00	24.00
Tala.....	-	35.00	-	35.00	30.00	30.00	31.00	30.00	30.00	32.50	31.25	30.00
Thika.....	38.00	45.00	-	48.33	45.00	47.50	46.67	45.00	-	-	-	-
Toi.....	52.50	52.50	60.00	60.00	57.14	57.14	57.14	-	-	-	-	-
Turbo.....	28.00	28.00	28.00	35.00	41.67	35.00	35.00	30.00	-	25.00	25.00	21.25
Turkana.....	83.33	62.70	69.64	60.00	-	51.39	70.31	-	-	-	40.00	50.00
Ukunda.....	50.00	50.00	55.00	50.00	53.60	55.00	48.33	40.00	-	41.00	42.50	43.00
Unguja.....	31.99	29.22	30.36	25.95	-	30.52	28.60	-	34.62	34.10	37.72	39.25
Voi.....	-	-	-	-	-	-	30.00	-	-	-	-	-
Wajir Town.....	-	-	-	-	-	-	-	90.00	-	-	-	-
Wote.....	-	-	-	30.00	-	28.00	28.00	28.86	28.00	-	27.00	28.50
Total.....	40.14	40.00	40.04	40.29	39.71	38.49	36.37	34.29	30.83	29.21	29.23	29.86

-Data not Available

Table 9(b): Average Monthly Retail Prices for Dry Maize, 2019 (per Kg)

Month/Market	January	February	March	April	May	June	July	August	September	October
Akala.....	-	-	-	-	-	-	-	-	34.09	31.82
Bomet.....	30.50	32.00	32.00	32.00	32.00	32.00	-	-	-	-
Bondo.....	31.84	-	-	-	-	-	-	-	-	-
Bumala.....	-	-	-	-	-	38.10	40.95	38.10	36.90	33.33
Bura Tana.....	-	50.00	50.00	50.00	-	-	-	-	-	-
Burn Forest.....	20.00	21.00	25.00	25.63	39.38	45.00	40.00	40.00	40.00	40.00
Busia Town.....	-	-	-	-	-	47.62	43.65	38.78	35.24	33.33
Chepsonoi.....	23.02	22.77	23.54	30.09	38.26	36.28	36.75	40.00	-	-
Cheptula.....	25.00	27.38	28.57	36.90	42.86	42.86	45.24	38.10	33.33	-
Daraja Mbili.....	27.92	26.84	25.57	39.07	37.54	40.93	47.31	36.47	38.02	-
Eldoret.....	25.00	26.25	30.00	25.63	45.00	50.00	44.00	40.00	40.00	-
Embu Town.....	27.27	25.00	22.73	22.73	-	-	-	-	-	-
Engare.....	-	-	-	-	-	-	-	18.00	18.00	24.00
Gakromere.....	33.33	33.33	33.33	37.78	44.44	42.59	-	-	50.00	50.00
Garissa Town....	60.00	60.00	50.00	57.50	64.00	65.00	51.13	52.83	51.67	65.00
Gatundu.....	33.75	40.00	22.50	50.00	-	-	-	-	40.83	52.44
Githurai.....	46.67	45.00	40.00	50.00	50.00	50.00	45.24	-	51.67	53.33
Hola.....	-	50.00	50.00	50.00	-	-	-	-	-	-
Iciara.....	22.23	22.74	22.73	22.73	-	-	-	-	-	-
Isiolo Town.....	30.00	30.00	31.25	30.00	-	-	-	-	-	-
Iten.....	25.00	25.00	26.00	33.75	45.00	50.00	50.00	50.00	50.00	50.00
Kabarnet.....	-	30.00	33.33	44.44	57.22	44.44	-	-	-	-
Kajiado.....	44.00	49.17	62.50	50.00	58.33	49.17	48.13	62.50	50.00	-
Kalundu.....	25.00	25.00	25.80	29.25	40.00	40.00	-	-	-	-
Kapsabet.....	22.65	23.89	24.58	31.00	37.02	38.08	38.73	40.42	40.00	-
Karatina.....	26.77	26.68	27.00	30.81	28.67	35.71	-	-	-	-
Kegonga.....	21.74	21.74	-	26.09	30.43	-	-	-	-	-
Kehacha.....	23.19	21.96	22.46	26.09	-	-	-	-	-	-
Kerugoya.....	32.73	31.85	32.58	44.48	50.00	-	-	-	-	-
Kiambu.....	45.00	45.00	43.33	-	54.00	-	-	-	45.00	67.50
Kianjai.....	31.48	25.56	23.61	38.89	38.89	38.89	-	-	42.22	47.22
Kibirigo.....	25.00	26.09	26.09	43.48	40.22	-	-	-	-	-
Kilgoris.....	-	-	-	-	-	-	-	28.00	24.00	24.00
Kimulot.....	24.00	25.00	28.00	32.00	32.00	32.80	36.00	40.00	40.00	40.00
Kipkaren.....	20.00	21.67	25.00	25.00	41.11	45.00	41.00	40.00	40.00	-
Kiriani.....	-	30.00	30.00	30.00	-	-	-	-	-	50.00
Kiritiri.....	27.92	25.84	27.14	26.98	-	-	-	-	-	-
Kitale.....	20.83	26.56	25.00	30.42	-	-	-	-	27.13	20.00
Kutus.....	30.88	32.77	28.18	36.90	-	-	-	-	-	-
Kwale.....	46.00	46.25	40.00	42.50	42.00	-	-	-	50.00	-
Limuru.....	40.00	-	45.00	-	-	-	-	-	45.00	67.50
Lodwar.....	56.67	54.29	-	69.58	66.03	50.00	50.00	-	-	-
Machakos Town	30.00	30.00	30.00	36.67	50.00	50.00	-	-	50.00	45.00
Makuyu.....	25.00	30.00	30.00	30.00	-	42.50	-	-	-	48.15
Marsabit Town...	32.50	32.50	41.25	47.50	46.00	-	-	-	-	-
Mbale.....	23.81	25.00	37.14	35.12	38.89	36.51	42.38	41.67	35.71	-
Migori.....	35.60	21.74	22.17	27.72	-	-	-	-	-	-
Mulot.....	26.00	23.00	20.00	34.00	32.00	32.00	-	-	-	-
Mundeta.....	23.81	23.81	23.81	29.76	40.48	40.00	43.81	41.07	35.71	-
Muthithi.....	30.00	28.75	30.00	30.00	-	-	-	-	-	46.46
Muthurwa Narok	-	-	-	-	-	-	-	35.00	40.00	-
Nakuru Town....	27.78	27.78	34.72	38.89	47.22	48.33	45.00	35.00	35.00	35.00
Nanyuki.....	33.06	33.34	32.97	42.63	54.95	55.79	54.95	54.50	54.80	-
Ngiya.....	42.46	-	-	-	-	-	-	-	31.97	32.76
Nyabite.....	25.00	26.09	26.09	45.45	42.29	-	-	-	-	-
Nyahururu.....	27.78	27.78	31.85	41.67	49.37	55.25	-	44.44	44.78	-
Nyeri.....	26.02	28.57	25.82	29.84	48.85	33.33	-	-	-	-
Oi Kalou.....	35.00	37.50	45.00	46.25	53.33	50.00	50.00	43.75	50.00	50.00
Oyugis.....	-	-	-	43.48	-	-	-	-	-	37.50
Riochanda.....	20.83	21.74	-	39.13	39.13	-	-	-	-	43.18
Runyenjes.....	22.73	23.86	20.45	19.32	-	-	-	-	-	-
Sagana.....	29.55	35.12	-	-	-	-	-	-	-	-
Siakago.....	23.27	23.02	24.00	27.30	-	-	-	-	-	-
Siaya.....	35.12	-	-	-	-	-	-	37.50	32.52	-
Soko Mjinga.....	26.09	27.27	-	43.48	40.63	-	38.46	35.42	33.33	-
Sotik.....	24.00	25.00	27.20	32.00	32.00	32.00	-	-	-	-
Tala.....	30.00	35.00	35.00	35.00	38.00	40.00	-	-	40.00	40.00
Thika.....	44.29	31.25	35.83	50.00	50.00	55.00	57.39	-	45.00	65.00
Turbo.....	20.00	20.63	23.75	26.25	40.00	45.00	40.00	40.00	40.00	-
Ukunda.....	48.75	46.60	47.00	45.00	42.50	-	-	-	49.00	-
Unguja.....	34.29	-	-	-	-	-	-	-	35.41	-
Voi.....	25.00	25.00	-	-	45.00	45.00	-	-	-	-
Wote.....	28.00	28.00	27.50	50.99	41.71	40.00	-	-	45.00	43.80
Total	31.64	30.78	31.99	38.62	43.55	44.11	45.47	41.64	40.84	48.08

- Data not available

Table 9(C): Average Monthly Retail Prices for Dry Beans, 2018 (per Kg)

Month/Town	Jan	Feb	Mar	Apr	May	Jun	Jul	Aug	Sep	Oct	Nov	Dec
Akala.....	80.98	-	-	-	-	-	-	71.34	74.91	72.21	81.19	81.45
Bomet.....	71.16	66.66	78.85	70.94	70.77	77.78	73.08	71.15	69.93	64.62	69.23	-
Bondo.....	100.28	100.22	93.41	95.03	99.28	70.74	90.91	-	-	-	-	-
Bumala.....	-	-	-	-	69.05	73.02	-	-	-	-	-	-
Bungoma Town.....	-	-	-	-	-	-	73.00	88.21	-	-	-	-
Bura Tana.....	100.00	100.00	100.00	100.00	100.00	100.00	100.00	100.00	100.00	100.00	-	-
Burma.....	104.76	104.76	105.00	105.00	100.00	100.00	100.00	-	-	-	-	-
Burn Forest.....	90.00	90.00	105.00	113.46	114.40	90.00	88.33	85.00	83.75	80.00	-	-
Busia Town.....	-	-	-	-	80.95	76.98	-	-	-	-	-	-
Butere.....	100.00	88.64	102.28	113.64	68.18	73.63	75.00	-	-	-	-	-
Chepsonoi.....	-	-	-	-	81.55	79.08	78.11	79.19	82.61	-	82.66	89.59
Cheptula.....	73.97	79.22	81.82	84.09	77.27	77.27	72.73	69.32	72.73	70.91	68.18	68.18
Daraja Mbili.....	-	57.57	80.94	-	-	-	-	63.70	62.94	-	60.03	63.02
Eldoret.....	-	95.46	102.50	119.00	112.73	100.00	93.33	90.00	85.00	85.00	88.75	90.00
Embu Town.....	67.50	65.63	70.84	65.28	60.51	65.28	58.64	58.35	56.25	61.24	59.09	59.09
Endebess.....	75.00	80.56	62.50	62.50	-	-	-	-	-	-	-	-
Engare.....	-	-	-	70.00	51.20	56.00	53.33	59.00	56.00	65.60	70.00	72.00
Gakoromere.....	88.89	79.17	76.39	75.31	77.78	55.56	55.56	55.56	55.56	55.56	63.89	66.67
Garissa Town.....	-	-	-	-	-	113.33	98.10	86.67	86.67	87.67	81.67	81.67
Garsen.....	80.00	80.00	80.00	80.00	80.00	80.00	80.00	80.00	80.00	80.00	80.00	80.00
Gatundu.....	-	-	-	96.11	100.00	99.17	97.22	93.33	100.00	51.67	-	-
Gikomba.....	95.24	100.00	110.00	110.00	104.76	104.76	104.76	-	-	-	-	-
Githurai.....	-	-	-	81.61	84.05	82.77	82.94	87.92	87.50	51.67	-	-
Harambee.....	-	-	-	-	-	-	-	-	-	81.82	-	-
Hola.....	100.00	100.00	100.00	100.00	100.00	100.00	100.00	100.00	100.00	100.00	-	-
Homabay.....	-	-	-	-	-	-	60.15	60.10	-	65.38	-	-
Iciara.....	-	-	-	-	-	-	-	-	48.11	56.33	59.64	61.37
Isiolo Town.....	-	-	-	80.00	80.00	-	-	59.34	80.27	80.00	81.67	85.00
Iten.....	-	95.46	93.86	94.26	94.98	96.16	75.24	-	-	75.00	68.83	53.13
Kabarnet.....	77.78	88.89	-	-	100.00	88.89	87.50	-	-	-	-	-
Kajado.....	-	110.00	110.00	120.00	120.00	114.00	115.29	120.00	120.00	-	110.00	97.00
Kakamega.....	116.37	113.64	113.64	107.96	109.09	90.91	84.09	-	-	-	-	-
Kalundu.....	82.86	82.50	83.33	70.00	100.00	100.00	70.00	70.00	72.50	-	67.14	70.00
Kandara.....	-	-	-	-	-	-	-	-	-	60.00	-	-
Kangemi.....	105.00	104.76	104.76	110.00	105.00	105.00	105.00	-	-	-	-	-
Kapsabet.....	78.16	82.97	83.41	86.05	92.61	81.96	78.89	80.53	83.33	-	89.02	77.45
Karatna.....	105.24	106.07	104.71	122.73	100.25	103.29	102.02	-	-	87.47	84.34	80.62
Kawangware.....	100.00	95.24	95.24	104.55	104.55	104.55	104.55	-	-	-	-	-
Kegongga.....	77.00	93.92	88.00	84.62	97.33	96.00	100.60	-	-	80.77	-	94.00
Kehacha.....	74.67	81.50	78.00	93.00	90.00	98.18	97.00	-	-	77.64	78.00	80.00
Kerugoya.....	64.52	62.64	60.93	-	63.09	63.86	65.22	51.36	52.49	62.62	72.36	72.36
Kiambu.....	-	-	-	71.79	66.93	69.23	75.29	79.17	-	-	-	-
Kianjai.....	-	68.75	69.45	75.00	81.11	58.34	55.56	55.56	-	57.41	50.00	-
Kibingo.....	-	-	-	-	76.09	-	86.21	-	-	-	77.27	-
Kiboswa.....	70.83	-	-	-	-	-	-	-	-	-	-	-
Kilgoris.....	-	-	-	76.00	80.80	82.67	80.00	73.00	95.00	60.80	26.00	97.00
Kimulot.....	72.00	72.00	72.00	80.00	81.14	80.00	63.20	65.50	64.80	63.20	65.08	-
Kipkaren.....	-	90.00	100.00	113.33	116.11	90.00	86.67	81.67	-	80.00	80.00	80.00
Kiriaini.....	-	-	-	-	75.00	73.33	70.00	70.00	72.50	76.92	76.98	72.50
Kiritiri.....	-	-	-	-	-	-	-	-	57.32	73.93	68.44	70.25
Kitale.....	83.33	83.33	83.33	83.33	78.97	66.67	66.67	63.89	-	-	-	-
Kongowea.....	87.50	87.50	87.50	80.00	80.00	80.00	-	63.75	60.00	52.00	60.00	60.00
Korokochu.....	104.76	104.76	100.00	105.00	105.00	105.00	105.00	-	-	-	-	-
Kutus.....	68.15	66.31	68.48	-	65.22	65.22	65.22	66.70	67.48	70.84	69.81	71.96
Kwale.....	95.00	100.00	100.00	100.00	90.00	100.00	85.00	60.00	-	80.00	80.00	82.50
Limuru.....	-	-	-	86.51	72.76	68.90	76.17	80.00	-	-	-	-
Lodwar.....	73.01	84.95	79.17	100.00	67.13	72.92	-	-	-	-	-	-
Machakos Town.....	-	80.00	80.00	80.00	80.00	78.33	80.00	80.00	80.00	80.00	77.50	70.00
Mackinnon.....	116.00	120.00	120.00	120.00	120.00	-	-	100.00	95.00	100.00	100.00	100.00
Majengo.....	102.50	97.50	77.50	80.00	86.00	90.00	-	80.00	80.00	80.00	75.00	70.00
Makuyu.....	-	-	-	75.00	70.00	75.00	73.75	69.17	70.00	-	75.99	65.00
Marsabit Town.....	80.00	90.00	94.58	100.00	100.00	100.00	92.73	82.50	80.00	80.00	80.00	70.00
Mbale.....	90.91	86.36	90.91	-	81.82	84.09	90.91	-	-	77.27	81.82	81.82
Migori.....	80.00	83.00	80.50	96.00	96.80	94.50	102.00	-	-	82.68	76.00	74.27
Mulot.....	65.38	63.64	75.00	67.31	69.87	63.67	66.48	58.33	58.65	63.33	64.74	64.10
Mumias.....	116.36	109.10	78.41	84.09	90.91	90.91	78.41	-	-	-	-	-
Mundela.....	-	-	-	77.27	69.70	68.18	74.24	-	-	74.25	73.64	75.00
Muthithi.....	-	-	-	-	70.00	70.00	72.50	72.50	67.50	-	70.59	75.00
Muthurwa.....	81.33	84.56	80.97	104.76	110.00	110.00	110.00	-	-	-	-	-
Muthurwa Narok.....	-	-	-	-	92.80	96.00	97.33	98.00	-	104.80	112.00	100.00
Mwembe Tayari.....	102.50	85.00	77.50	80.00	94.00	80.00	-	80.00	77.50	84.00	90.00	78.33
Nakuru Town.....	68.89	71.25	70.00	63.75	82.94	76.11	63.58	52.13	55.19	-	51.85	57.04
Nanyuki.....	-	115.54	110.09	110.21	102.25	113.22	89.80	97.56	-	83.34	88.28	79.68
Ndaragwa.....	-	100.00	-	-	-	-	-	-	-	-	-	-
Ndondori.....	-	-	-	75.00	-	-	-	-	-	-	-	-
Ngija.....	101.36	93.75	100.10	96.33	72.92	79.38	105.49	68.81	73.75	73.75	80.37	83.51
Nyabite.....	-	-	-	-	89.39	-	69.26	57.89	-	-	77.27	-
Nyahururu.....	-	110.91	111.12	110.96	111.29	110.85	111.32	80.56	-	-	-	77.61
Nyeri.....	99.41	95.98	93.22	89.92	99.61	90.48	89.33	-	-	81.05	78.32	83.43
Ol Kalou.....	-	100.00	100.00	100.00	100.00	84.44	96.30	100.00	-	100.00	90.00	95.00
Oyugis.....	-	-	-	-	-	56.63	-	-	-	-	-	-
Riochanda.....	-	-	-	-	77.54	-	63.53	67.19	-	-	81.82	-
Runyenjes.....	84.81	66.67	63.89	62.50	65.24	60.03	59.20	56.48	63.04	59.46	62.77	61.10
Sagana.....	78.97	91.38	85.15	-	77.71	65.53	-	77.22	62.95	71.10	70.66	69.81
Sega.....	98.00	90.00	82.50	80.00	88.00	-	-	82.50	80.00	76.00	60.00	62.50
Siakago.....	66.67	67.71	68.75	66.67	68.64	60.24	56.52	59.94	59.06	63.20	54.31	58.06
Siaya.....	112.59	102.65	96.29	-	90.52	86.49	91.91	75.17	74.59	73.49	80.02	83.51
Sibanga.....	83.33	81.25	83.33	83.33	-	-	-	-	-	-	-	-
Soko Mjinga.....	-	-	-	83.45	88.32	-	56.56	66.35	64.43	-	-	-
Sotik.....	68.00	68.00	68.18	72.80	76.00	74.29	64.00	65.00	65.00	63.20	64.00	64.00
Tala.....	-	70.00	-	70.00	70.00	71.67	75.00	70.00	70.00	72.50	70.00	70.00
Thika.....	72.00	77.00	-	78.98	79.55	79.22	80.12	86.67	-	-	-	-
Toi.....	115.00	109.52	110.00	110.00	110.00	110.00	110.00	-	-	-	-	-
Turbo.....	100.00	100.00	105.00	112.50	115.50	90.00	90.00	85.00	-	80.00	83.75	82.50
Turkana.....	75.00	83.33	83.33	100.00	-	102.53	80.73	-	-	83.33	90.91	112.50
Ukunda.....	100.00	90.00	90.00	100.00	90.00	95.00	90.83	62.50	-	69.00	72.50	78.75
Unguja.....	98.75	98.13	95.38	100.00	74.44	69.33	74.11	75.28	74.17	72.63	81.68	83.33
Voi.....	-	-	-	-	-	63.33	-	-	-	-	-	-
Wajir Town.....	-	-	-	-	-	-	-	120.00	-	-	-	-
Wote.....	-	-	-	110.00	-	97.50	90.00	80.00	100.00	-	86.67	95.00
Total.....	88.10	88.74	88.84	90.52	87.50	85.03	82.07	75.72	74.55	74.42	74.95	76.80

- Data Not Available

Table 9(d): Average Monthly Retail Prices for Dry Beans, 2019 (per Kg)

Month/Market	January	February	March	April	May	June	July	August	September	October
Akala.....	-	-	-	-	-	-	-	-	76.07	80.01
Bomet.....	72.12	71.79	71.79	71.79	74.87	79.49	-	-	-	-
Bondo.....	84.90	-	-	-	-	-	-	-	-	-
Bumala.....	-	-	-	-	-	104.76	102.86	83.33	70.07	119.05
Bura Tana.....	-	100.00	100.00	95.00	-	-	-	-	-	-
Burn Forest.....	90.00	90.00	90.00	92.50	106.25	125.00	112.50	100.00	100.00	100.00
Busia Town.....	-	-	-	-	-	95.24	92.64	79.89	119.05	133.33
Chepsonoi.....	83.43	82.58	86.46	90.50	110.78	108.85	116.34	115.67	-	-
Cheptula.....	72.40	71.59	72.73	85.23	92.42	95.45	93.64	90.91	90.91	-
Daraja Mbili.....	58.57	62.35	70.42	96.07	104.80	88.17	91.70	87.32	84.51	-
Eldoret.....	90.00	90.00	92.50	100.00	113.75	125.00	113.00	100.00	100.00	-
Embu Town.....	52.17	59.44	54.35	52.17	-	-	-	-	-	-
Endebess.....	52.59	60.10	58.04	53.57	-	-	-	-	-	-
Engare.....	-	-	-	-	-	-	-	60.00	74.00	80.00
Gakomere.....	66.67	66.67	66.67	80.00	100.00	96.83	-	-	100.00	100.00
Garissa Town.....	81.67	81.67	81.67	81.67	99.00	103.33	97.50	96.00	98.00	103.33
Garsen.....	80.00	80.00	80.00	85.71	100.00	-	-	-	-	-
Gatundu.....	85.00	51.67	41.67	95.00	-	-	-	-	93.33	65.78
Githurai.....	85.71	75.00	51.67	96.00	98.33	101.21	57.28	-	80.00	74.20
Hola.....	-	100.00	100.00	100.00	-	-	-	-	-	-
Iciara.....	60.98	65.96	65.22	67.39	-	-	-	-	-	-
Isiolo Town.....	76.67	56.67	52.50	60.00	-	-	-	-	-	-
Iten.....	100.00	100.00	100.00	106.25	125.00	100.00	108.33	65.00	50.00	50.00
Kabarnet.....	-	88.89	100.00	111.11	94.72	111.11	-	-	-	-
Kajiado.....	108.65	99.69	100.00	93.33	112.22	112.03	103.08	100.00	93.33	-
Kalundu.....	77.50	75.00	72.73	80.00	102.50	95.00	-	-	-	-
Kapsabet.....	81.04	86.62	86.99	90.02	100.92	112.92	109.85	114.13	137.99	-
Karatina.....	82.33	80.27	88.29	87.09	68.31	70.33	-	-	-	-
Kegonga.....	84.00	72.00	-	76.00	96.00	-	-	-	-	-
Kehacha.....	68.46	74.27	78.67	92.00	-	-	-	-	-	-
Kerugoya.....	54.98	55.20	51.36	58.22	63.86	-	-	-	-	-
Kiambu.....	81.67	76.44	70.00	-	89.78	-	-	-	69.88	81.23
Kianjai.....	62.96	54.44	51.39	77.78	80.56	77.78	-	-	85.19	94.44
Kibirigo.....	72.73	90.91	100.00	100.00	108.89	-	-	-	-	-
Kilgoris.....	-	-	-	-	-	-	-	98.00	96.00	96.00
Kimulot.....	64.00	65.50	68.67	70.00	70.00	71.20	72.80	65.00	60.50	60.00
Kipkaren.....	82.50	90.00	90.00	92.50	106.67	117.50	110.00	100.00	100.00	-
Kiriaini.....	-	70.00	71.00	70.00	-	-	-	-	-	73.51
Kiritiri.....	63.86	65.28	64.88	66.70	-	-	-	-	-	-
Kitale.....	78.33	83.33	83.33	81.67	-	-	-	-	66.67	56.52
Kutus.....	67.99	64.57	65.81	73.91	-	-	-	-	-	-
Kwale.....	78.00	78.75	77.50	80.00	80.00	-	-	-	90.00	-
Limuru.....	76.12	-	80.00	-	-	-	-	-	70.21	86.59
Lodwar.....	91.67	83.33	-	93.75	118.06	110.42	100.00	-	-	-
Machakos Town.....	75.00	80.00	80.00	80.00	100.00	100.00	-	-	100.00	100.00
Makuyu.....	70.00	65.00	65.00	70.00	-	71.29	-	-	-	71.83
Marsabit Town.....	65.00	65.00	77.50	85.00	92.00	-	-	-	-	-
Mbale.....	84.09	84.85	83.64	86.36	100.76	95.45	100.00	111.99	96.59	-
Migori.....	71.49	69.35	71.11	84.27	-	-	-	-	-	-
Mulot.....	64.10	64.10	62.82	70.51	74.36	74.36	-	-	-	-
Mundeta.....	68.18	68.90	72.55	90.91	102.27	102.73	91.82	88.64	90.91	-
Muthithi.....	75.00	68.75	66.67	75.00	-	-	-	-	-	71.51
Muthurwa Narok.....	-	-	-	-	-	-	-	80.00	82.00	-
Nakuru Town.....	62.22	62.22	62.22	66.11	67.94	66.60	65.00	65.00	65.00	62.50
Nanyuki.....	77.56	77.14	78.21	95.19	110.10	109.65	112.58	117.80	115.97	-
Ngiya.....	83.39	-	-	-	-	-	-	-	69.97	69.23
Nyabite.....	77.27	72.73	79.55	95.65	111.36	-	-	-	-	-
Nyahururu.....	77.35	77.78	77.35	77.78	110.76	111.11	-	108.70	111.11	-
Nyeri.....	78.74	77.40	86.52	83.88	89.96	74.18	-	-	-	-
Oi Kalou.....	101.67	102.50	100.00	100.00	83.33	100.00	100.00	107.14	100.00	100.00
Oyugis.....	-	-	-	79.20	-	-	-	-	-	96.08
Riochanda.....	67.05	83.33	-	113.64	77.27	-	-	-	-	65.22
Runyenjes.....	59.09	60.38	60.87	63.04	-	-	-	-	-	-
Sagana.....	65.37	80.43	-	-	-	-	-	-	-	-
Siakago.....	63.86	63.86	64.57	66.70	-	-	-	-	-	-
Siaya.....	86.40	-	-	-	-	-	-	-	65.96	-
Soko Mjinga.....	71.79	72.06	-	85.01	94.23	-	94.08	94.12	98.08	-
Sotik.....	64.00	65.50	68.80	70.00	70.00	70.00	-	-	-	-
Tala.....	70.00	70.00	70.00	70.00	78.00	80.00	-	-	80.00	80.00
Thika.....	77.44	64.17	73.33	97.22	94.50	86.55	75.46	-	86.67	97.07
Turbo.....	85.00	86.25	90.00	97.50	106.25	121.25	109.00	100.00	100.00	-
Ukunda.....	90.00	84.00	82.00	80.00	77.50	-	-	-	85.00	-
Unguja.....	87.11	-	-	-	-	-	-	-	79.79	-
Voi.....	86.67	80.26	-	-	102.00	95.00	-	-	-	-
Wote.....	76.00	71.00	77.50	78.75	100.00	100.00	-	-	95.00	100.00
Total.....	78.15	75.59	76.53	83.44	92.04	96.35	91.74	89.68	85.23	84.91

Table 10: Exports of Coffee and Tea

Month	COFFEE *		TEA	
	Quantity (MT)	Value '(KSh. Million)	Quantity (MT)	Value '(KSh. Million)
2018				
January.....	2,509.26	1,285.98	48,446.76	14,964.45
February.....	2,834.28	1,612.42	47,356.65	14,656.94
March.....	3,936.10	2,236.94	34,487.70	10,470.94
April.....	4,550.24	2,822.20	33,564.66	9,829.58
May.....	5,572.91	3,209.36	42,532.98	11,703.03
June.....	4,649.03	2,664.46	45,182.21	12,463.24
July.....	4,683.09	2,457.05	45,242.32	12,226.12
August.....	2,972.69	1,546.91	38,022.53	9,919.47
September...	2,519.53	1,141.39	40,267.54	10,478.62
October.....	3,521.39	1,467.33	43,893.85	11,327.26
November....	4,619.48	1,729.50	44,107.54	11,014.55
December....	2,311.60	921.35	38,680.96	9,781.31
2019				
January.....	3,469.39	1,498.72	48,622.81	11,831.30
February.....	4,567.37	1,903.18	41,026.62	9,638.24
March.....	4,351.34	2,256.18	42,457.17	9,910.41
April.....	4,551.54	2,500.94	36,883.92	8,630.54
May.....	5,489.90	2,699.81	36,993.68	9,292.80
June.....	4,548.70	1,963.94	29,355.17	7,154.11
July.....	5,115.45	1,713.18	33,657.14	7,788.40
August.....	3,931.89	1,461.51	41,275.96	9,458.09
September...	3,144.73	1,112.65	36,325.07	8,462.91
October.....	3,985.76	1,390.06	45,373.90	11,064.77
November....	3,664.41	1,175.66	43,650.47	10,735.39

Source: KRA Customs and Border Control Services department

* Coffee, not Roasted

MT denotes Metric tonnes

Table 11: Monthly Exports of Fresh Horticultural Produce

Month	Cut-flowers				Fruits				Vegetable			
	2018		2019*		2018		2019*		2018		2019*	
	Quantity (MT)	Value (KSh Million)	Quantity (MT)	Value (KSh Million)	Quantity (MT)	Value (KSh Million)	Quantity (MT)	Value (KSh Million)	Quantity (MT)	Value (KSh Million)	Quantity (MT)	Value (KSh Million)
January.....	15,941.08	12,354.09	15,585.32	9,939.87	2,897.01	458.01	3,241.48	507.45	8,293.18	2,086.58	9,794.17	2,503.41
February.....	17,501.03	12,682.70	17,865.75	10,914.69	5,973.81	827.86	8,564.62	1,236.09	6,128.07	2,946.02	7,016.72	1,869.56
March.....	14,686.27	8,438.88	16,463.44	8,861.73	10,758.95	2,079.12	12,183.15	1,757.85	7,548.81	2,098.62	5,357.63	1,826.03
April.....	12,833.44	9,116.46	15,581.04	9,960.00	11,995.51	1,627.26	10,403.68	1,542.81	4,825.37	2,130.99	5,149.66	2,171.14
May.....	13,329.46	11,531.07	15,337.77	9,384.86	7,535.17	1,076.26	8,915.77	1,152.12	6,792.62	1,949.64	5,275.12	1,810.50
June.....	9,617.48	6,986.57	11,744.03	6,137.83	6,948.90	1,241.66	7,038.09	1,201.85	4,946.37	1,410.29	5,770.09	3,746.19
July.....	9,794.81	5,131.97	11,074.20	6,187.88	7,020.27	1,213.97	8,546.38	1,556.23	4,421.85	1,387.96	5,218.74	1,736.80
August.....	11,560.38	10,669.69	12,599.62	7,818.28	8,403.10	1,608.97	6,408.57	1,158.65	7,090.14	2,842.46	5,312.26	2,173.38
Sept.....	12,854.01	8,052.20	14,157.26	6,611.52	5,989.53	1,268.93	4,035.10	522.03	10,148.38	2,535.59	5,061.47	1,679.77
October.....	15,319.05	9,029.33			2,235.80	393.45			10,841.18	2,617.76		
Nov.....	14,862.36	12,109.92			2,577.43	465.46			8,819.18	2,426.02		
Dec.....	12,927.72	8,089.85			3,306.50	570.14			5,963.54	3,253.25		
Total.....	161,227.10	114,192.74	130,408.44	75,816.65	75,641.97	12,831.09	69,336.84	10,635.07	85,818.72	27,685.19	53,955.86	19,516.78

Source: Horticultural Directorate

* Provisional

Table 12: External Trade

KSh Million						
Month	Domestic Exports	Re-Exports	Total Exports	Total Imports	Volume of Trade	Home use Imports
2018⁺						
January.....	46,227.50	7,219.43	53,446.93	157,516.94	210,963.87	150,660.74
February.....	49,398.06	7,873.55	57,271.61	128,943.27	186,214.89	125,930.74
March.....	46,310.17	4,682.59	50,992.76	152,038.51	203,031.27	142,361.49
April.....	43,138.42	6,909.26	50,047.68	150,002.08	200,049.76	138,412.71
May.....	47,728.87	7,585.00	55,313.87	168,020.10	223,333.98	161,799.90
June.....	48,724.34	4,194.90	52,919.25	142,525.50	195,444.74	137,593.90
July.....	46,391.15	6,493.71	52,884.86	152,648.13	205,532.99	150,329.69
August.....	43,297.56	7,689.34	50,986.90	149,306.97	200,293.87	139,351.18
September...	42,637.13	4,140.25	46,777.38	129,796.06	176,573.44	125,826.66
October.....	44,137.25	5,821.96	49,959.22	149,245.11	199,204.32	137,316.22
November....	44,073.60	4,241.97	48,315.57	153,491.79	201,807.35	149,201.71
December....	39,405.36	4,607.23	44,012.59	126,686.88	170,699.47	121,827.30
2019*						
January.....	46,362.30	6,927.94	53,290.24	155,111.66	208,401.89	140,661.13
February.....	44,523.02	6,398.23	50,921.25	141,272.84	192,194.10	139,034.00
March.....	46,628.18	6,061.47	52,689.64	124,864.98	177,554.63	99,079.22
April.....	43,355.31	5,457.39	48,812.69	150,442.47	199,255.17	137,085.27
May.....	39,663.21	6,784.17	46,447.39	154,890.80	201,338.19	148,047.88
June.....	45,726.33	5,417.80	51,144.13	144,613.63	195,757.76	112,329.06
July.....	40,545.84	9,673.60	50,219.44	153,590.24	203,809.68	121,498.40
August.....	44,572.98	5,031.29	49,604.27	132,801.69	182,405.96	129,128.41
September...	39,824.06	6,233.49	46,057.54	124,149.98	170,207.52	118,301.87
October.....	44,953.95	5,432.14	50,386.09	159,175.36	209,561.45	117,223.45
November....	43,823.22	7,856.61	51,679.82	159,402.99	211,082.82	128,583.28

Source: Kenya Revenue Authority

⁺ Revised

*Provisional

Table 13(a): Major Destinations of Domestic Exports

KSh Million											
Month/Country	Uganda	Tanzania	United Kingdom	Pakistan	Netherlands	Egypt	Germany	Rwanda	USA	United Arab Emirates	France
2018											
January.....	3,522.39	1,639.15	3,474.86	7,311.82	4,190.03	2,186.67	771.23	1,052.37	2,538.08	1,746.42	520.11
February.....	4,489.98	2,382.83	4,273.06	6,989.37	4,528.73	2,012.05	1,019.77	1,098.47	3,039.26	2,435.82	523.44
March.....	4,908.78	1,984.68	3,259.82	4,264.52	5,012.53	1,176.03	1,041.64	1,284.54	3,615.25	2,213.77	657.88
April.....	3,441.66	2,320.08	3,295.19	4,073.73	4,071.13	1,017.21	1,149.95	1,134.05	3,599.91	1,516.63	720.33
May.....	4,942.74	2,215.05	3,266.73	4,508.35	3,848.43	1,736.37	1,238.25	1,397.65	4,335.60	2,013.96	799.88
June.....	4,357.49	1,798.21	3,536.14	5,246.93	3,313.05	1,939.73	1,038.67	1,189.67	4,498.54	1,904.99	558.49
July.....	3,703.89	1,933.73	3,744.68	5,346.96	3,616.37	1,376.88	968.51	1,402.51	5,325.58	1,871.81	685.66
August.....	4,449.66	2,149.53	2,551.79	3,809.35	3,105.61	1,528.96	602.80	1,485.63	4,758.17	1,803.94	778.36
September...	4,099.65	1,917.12	2,920.98	4,639.27	3,731.40	1,578.65	721.62	1,199.22	4,064.64	1,843.59	867.24
October.....	4,293.07	2,177.53	3,243.80	4,276.78	3,547.80	2,081.39	895.64	1,225.99	3,753.66	2,134.14	664.72
November....	4,619.16	2,242.75	3,153.07	4,560.08	2,998.40	1,114.09	954.12	1,581.89	4,606.55	2,298.61	637.73
December....	4,172.04	2,099.46	3,231.85	4,014.59	3,345.50	1,642.86	572.15	1,072.20	2,970.39	1,333.05	491.85
2019*											
January.....	4,345.11	2,113.06	4,418.99	4,411.96	4,650.98	2,068.80	895.63	1,043.44	3,732.43	1,928.94	625.27
February.....	4,353.75	2,056.67	3,720.80	4,289.18	4,902.82	1,454.58	1,233.55	1,269.53	3,305.64	1,466.29	602.51
March.....	4,535.53	2,173.74	3,700.36	4,293.95	4,824.51	1,726.32	1,033.20	1,570.68	3,905.57	1,577.08	657.19
April.....	4,107.53	2,458.48	2,698.56	3,764.79	3,486.03	1,648.32	1,262.31	1,504.01	5,172.36	1,314.89	593.37
May.....	4,118.12	2,401.50	1,986.05	3,455.38	2,572.99	1,701.92	1,137.79	1,872.06	4,181.74	1,406.15	449.66
June.....	4,588.50	2,308.09	3,825.79	2,479.45	5,367.30	1,398.00	984.07	1,771.74	4,291.21	1,869.05	715.03
July.....	4,549.48	2,400.52	3,537.36	3,188.46	2,813.01	805.22	780.57	2,150.33	4,309.96	1,442.26	869.80
August.....	3,861.65	2,614.26	3,285.76	3,192.87	3,456.79	1,982.59	850.12	2,290.21	4,469.56	1,493.76	748.19
September...	5,063.96	2,476.31	2,532.54	3,340.31	2,776.14	1,463.09	757.03	2,001.97	5,204.41	1,327.81	524.72
October.....	4,939.82	2,926.50	3,378.61	4,529.10	3,742.60	1,788.22	775.32	2,073.30	3,353.97	1,494.51	639.36
November....	4,572.77	2,366.80	3,530.24	4,235.12	3,417.52	1,730.74	715.81	2,097.92	4,480.66	1,526.76	593.60

Source: Kenya Revenue Authority

*Provisional

Table 13(b): Domestic Exports by Broad Economic Category

Descriptions	Value in KSh Million												
	2018		2019*										
	Nov	Dec	Jan	Feb	March	April	May	June	July	Aug	Sep	Oct	Nov
Food and beverages.....	19,673.36	17,112.10	21,025.36	18,983.27	20,692.22	18,971.96	19,193.86	18,364.69	18,106.37	19,107.52	17,130.93	20,603.11	20,824.76
Industrial supplies (Non-Food).....	10,934.19	10,194.75	11,444.61	10,795.21	10,917.59	10,953.34	8,361.64	11,515.14	9,899.13	10,454.09	10,103.33	11,250.04	9,118.54
Fuel and Lubricants.....	378.57	178.50	318.38	272.69	300.33	350.53	340.88	124.64	175.00	1,761.29	664.06	666.54	493.24
Machinery & other capital Equipment.....	695.02	435.49	514.53	596.35	1,228.54	1,104.23	856.40	989.39	1,118.11	780.84	695.50	687.32	908.80
Transport equipment.....	671.53	528.13	486.54	586.90	505.57	744.23	377.12	465.11	405.18	497.34	587.66	411.15	533.83
Consumer goods Not elsewhere specified....	11,720.83	10,956.09	12,572.88	13,288.15	12,983.51	11,231.01	10,533.16	14,267.36	10,819.75	11,971.90	10,640.92	11,836.68	11,944.04
Goods not elsewhere specified.....	0.10	0.31	-	0.46	0.42	-	0.15	-	22.31	-	-	0.07	-
Total	44,073.60	39,405.36	46,362.30	44,523.02	46,628.18	43,355.31	39,663.21	45,726.33	40,545.84	44,572.98	39,822.39	45,454.91	43,823.22
Percentage Shares:.....													
Food and Beverages.....	44.64	43.43	45.35	42.64	44.38	43.76	48.39	40.16	44.66	42.87	43.02	45.33	47.52
Industrial Supplies (Non-Food).....	24.81	25.87	24.69	24.25	23.41	25.26	21.08	25.18	24.41	23.45	25.37	24.75	20.81
Fuel and Lubricants.....	0.86	0.45	0.69	0.61	0.64	0.81	0.86	0.27	0.43	3.95	1.67	1.47	1.13
Machinery and other Capital Equipment.....	1.58	1.11	1.11	1.34	2.63	2.55	2.16	2.16	2.76	1.75	1.75	1.51	2.07
Transport Equipment.....	1.52	1.34	1.05	1.32	1.08	1.72	0.95	1.02	1.00	1.12	1.48	0.90	1.22
Consumer Goods not elsewhere specified....	26.59	27.80	27.12	29.85	27.84	25.90	26.56	31.20	26.69	26.86	26.72	26.04	27.26
Goods not elsewhere specified.....	0.00	0.00	-	0.00	0.00	-	0.00	-	0.06	-	-	0.00	-
TOTAL.....	100	100	100	100	100	100	100	100	100	100	100	100	100

Source: Kenya Revenue Authority (KRA)

Table 14 (a) Major Origins of Imports

(KSh Million)											
Month	United Arab Emirates	United Kingdom	South Africa	Saudi Arabia	Japan	India	USA	Germany	Netherlands	France	China
2018											
January.....	5,396.68	3,159.61	5,955.10	12,913.24	8,454.68	21,468.99	8,421.64	2,987.22	3,277.64	1,926.07	27,460.82
February.....	9,905.83	2,290.87	4,901.65	9,645.02	6,067.21	15,332.90	5,845.90	2,985.08	1,331.88	2,084.16	25,258.07
March.....	18,589.13	2,256.46	6,446.64	14,031.70	7,849.47	11,455.19	6,665.67	3,771.61	1,474.25	1,373.02	35,566.06
April.....	22,353.41	2,288.50	5,556.46	10,404.19	7,505.30	16,568.68	4,635.84	3,995.14	1,298.71	1,916.45	29,623.45
May.....	16,077.89	2,639.18	5,485.20	13,493.78	5,609.39	18,141.58	3,113.78	6,626.71	1,500.46	1,573.98	48,641.65
June.....	8,830.67	2,768.91	6,145.49	18,885.40	7,344.82	9,083.70	2,684.04	3,184.28	1,780.01	1,697.78	36,172.60
July.....	8,139.67	2,760.69	5,953.65	21,451.55	9,137.63	14,313.12	3,913.45	4,132.34	1,311.70	2,367.15	35,314.50
August.....	11,003.85	3,093.38	4,732.03	20,262.87	8,323.90	14,726.19	3,399.50	3,345.10	1,947.04	1,804.59	29,039.38
September...	9,724.29	2,261.72	3,253.66	4,557.89	8,914.82	24,813.09	3,543.27	3,673.28	1,520.35	2,034.83	25,117.04
October.....	15,988.21	2,459.48	5,557.09	17,310.25	8,760.00	15,204.47	4,054.71	4,873.15	1,130.61	2,268.36	26,837.16
November....	15,162.36	2,787.09	5,792.41	12,713.03	13,797.14	13,643.55	3,655.81	3,032.26	1,602.66	2,801.76	27,835.45
December....	6,244.67	2,789.51	4,954.14	17,034.05	8,058.31	10,500.64	3,311.54	3,993.06	1,188.80	2,081.33	23,960.20
2019*											
January.....	15,109.48	2,631.56	6,775.82	13,077.49	7,831.07	13,048.66	4,646.86	3,211.09	2,240.73	2,044.78	30,006.98
February.....	9,843.51	2,602.96	4,984.79	6,617.74	6,503.80	13,218.97	5,114.29	4,527.45	14,851.90	1,516.78	29,120.56
March.....	6,566.24	3,110.39	5,624.02	17,192.40	5,560.32	10,938.14	4,071.18	2,783.86	1,353.53	3,043.31	18,175.05
April.....	21,733.74	2,593.48	6,137.31	8,056.05	9,797.85	19,506.78	5,125.00	5,863.19	870.60	1,477.04	26,405.48
May.....	19,289.50	3,149.41	7,217.11	9,275.48	7,313.20	17,978.49	8,873.29	3,340.39	2,261.64	2,189.18	28,258.78
June.....	15,572.69	2,913.54	7,465.52	12,974.25	8,858.91	11,972.46	3,636.02	2,433.07	884.11	1,215.66	37,691.95
July.....	13,758.32	2,340.76	8,643.77	15,620.43	8,909.78	11,679.11	6,059.70	7,364.49	2,976.70	1,567.94	32,489.43
August.....	8,364.77	2,182.43	5,738.84	5,630.84	8,164.55	19,343.56	4,598.54	2,527.58	958.30	2,252.42	24,282.05
September...	11,376.13	2,374.07	3,929.75	10,098.17	5,229.36	12,785.04	4,419.94	2,139.03	1,777.33	1,234.94	24,345.36
October.....	11,291.03	3,367.76	4,824.85	11,224.42	9,538.28	14,164.02	5,535.93	3,755.52	928.81	2,298.14	36,905.26
November....	18,837.43	3,609.41	5,489.62	2,193.17	9,076.16	17,945.05	3,045.58	3,249.62	802.32	2,332.59	37,220.69

Source: Kenya Revenue Authority

*Provisional

Table 14(b): Imports by Broad Economic Category

Descriptions	Value in KSh Million												
	2018											2019*	
	Nov	Dec	Jan	Feb	Mar	Apr	May	Jun	July	Aug	Sep	Oct	Nov
Food and beverages.....	16,617.81	11,763.28	16,707.97	12,192.69	14,997.32	14,942.96	16,428.24	15,840.13	15,192.99	18,120.30	14,765.46	15,216.57	15,363.65
Industrial supplies (Non-Food)	47,714.60	41,837.71	58,373.17	43,619.35	47,371.53	50,105.36	49,450.80	50,038.77	52,749.80	49,023.06	38,456.46	52,991.12	48,510.82
Fuel and Lubricants.....	29,822.49	23,130.65	26,421.76	24,222.45	21,740.91	36,072.07	35,181.94	29,915.61	27,966.59	20,806.33	28,816.92	24,779.30	24,346.76
Machinery & other capital Equipment.....	30,125.55	23,544.06	25,260.90	33,547.46	18,316.86	24,376.75	22,417.96	19,757.26	28,901.23	18,324.87	18,950.07	32,415.55	33,224.82
Transport equipment.....	13,442.94	13,177.65	14,982.67	11,675.71	11,675.71	13,255.27	15,901.07	17,938.45	15,217.41	13,751.76	13,977.11	17,563.10	21,014.94
Consumer goods Not elsewhere specified....	14,515.77	12,108.27	12,292.74	10,589.45	10,589.45	11,071.39	14,112.92	10,530.03	12,029.64	10,932.34	8,469.61	16,135.72	15,977.43
Goods not elsewhere specified.....	1,252.63	1,125.26	1,072.44	173.21	173.21	618.69	1,397.85	593.39	1,532.57	1,843.02	707.31	73.99	964.58
Total	153,491.79	126,686.88	155,111.66	141,272.84	124,864.98	150,442.47	154,890.80	144,613.63	153,590.24	132,801.69	124,142.94	159,175.36	159,402.99
Percentage Shares:.....													
Food and Beverages	10.83	9.29	10.77	8.63	12.01	9.93	10.61	10.95	9.89	13.64	11.89	9.56	9.64
Industrial Supplies (Non-Food).....	31.09	33.02	37.63	30.88	37.94	33.31	31.93	34.60	34.34	36.91	30.98	33.29	30.43
Fuel and Lubricants	19.43	18.26	17.03	17.15	17.41	23.98	22.71	20.69	18.21	15.67	23.21	15.57	15.27
Machinery and other Capital Equipment.....	19.63	18.58	16.29	23.75	14.67	16.20	14.47	13.66	18.82	13.80	15.26	20.36	20.84
Transport Equipment.....	8.76	10.40	9.66	10.96	9.35	8.81	10.27	12.40	9.91	10.36	11.26	11.03	13.18
Consumer Goods not elsewhere specified....	9.46	9.56	7.93	8.46	8.48	7.36	9.11	7.28	7.83	8.23	6.82	10.14	10.02
Goods not elsewhere specified.....	0.82	0.89	0.69	0.18	0.14	0.41	0.90	0.41	1.00	1.39	0.57	0.05	0.61
TOTAL	100	100	100	100	100	100	100	100	100	100	100	100	100

Source: Kenya Revenue Authority

*Provisional

Table 14 (c): Mobile Money Transactions

As at the end of month	Mobile money Agents	Mobile money subscriptions (millions)	Number of Transactions (millions)*	Value (KSh billions)
2018				
January	188,029	37.84	136.66	322.98
February	192,117	38.42	132.30	300.85
March	196,002	39.34	147.52	337.11
April	201,795	40.29	142.06	313.00
May	202,387	41.73	140.95	328.97
June	197,286	42.58	137.41	317.67
July	200,227	42.61	143.09	332.35
August	202,627	43.56	149.52	348.91
September	203,359	44.27	145.99	327.66
October	211,961	45.44	155.16	343.23
November	206,312	46.23	153.15	343.87
December	205,745	47.69	155.77	367.77
2019				
January	201,336	40.30	154.24	368.02
February	212,252	50.04	144.49	328.15
March	226,957	50.36	161.38	368.39
April	230,220	52.05	155.80	360.22
May	224,825	52.20	153.26	364.25
June	222,484	46.80	149.73	346.85
July	222,087	53.89	152.98	366.39
August	222,479	54.78	151.83	368.50
September	224,959	55.70	151.22	365.91

Source: Central Bank of Kenya

Table 14(d): International trade in ICT

KSh Million

Imports	2018			2019									
	Oct	Nov	Dec	Jan	Feb	Mar	Apr	May	June	July	Aug	Sep	Oct
Office machines 1.....	59.04	101.24	722.12	91.44	187.30	183.86	246.84	371.89	39.82	511.73	23.71	55.94	137.10
Automatic data processing machines, storage units etc.....	831.79	1,274.83	681.60	1,388.08	1,152.82	2,002.55	2,369.65	1,349.49	755.49	819.14	201.83	382.86	1,751.45
Part and accessories 2.....	49.28	58.18	41.68	65.45	50.88	77.66	27.30	68.51	36.10	15.09	11.28	5.60	55.11
Monitors and projectors and reception apparatus for television3.....	582.63	993.44	469.56	784.62	635.53	719.59	663.28	739.52	624.26	989.59	959.63	700.62	1091.11
Reception apparatus for radio broadcasting4.....	24.23	458.31	25.62	18.96	29.30	26.55	15.91	19.14	40.02	46.45	22.43	29.61	18.50
Recording equipments 5.....	16.97	331.65	22.06	21.67	23.53	17.17	26.06	28.20	24.86	21.57	13.44	13.32	2.72
Telecommunications equipment 6.....	1,453.03	3,507.65	2,314.89	4,480.02	1,947.48	1,367.73	1,346.14	1,778.31	927.17	1128.13	503.78	617.21	2,539.21
Exports													
Office machines 1.....	0.27	3.24	3.97	8.09	5.29	0.34	11.02	4.44	0.23	0.70	0.92	32.22	1.47
Automatic data processing machines, storage units etc.....	27.59	22.32	32.22	17.90	60.84	74.66	25.38	45.41	87.61	74.03	37.18	0.47	28.00
Part and accessories 2.....	-	1.45	1.53	1.50	7.41	1.28	5.18	0.03	6.92	4.37	1.61	0.00	7.19
Monitors and projectors and reception apparatus for television3.....	26.23	0.46	9.79	2.71	41.17	3.47	3.32	4.02	14.40	28.44	21.41	43.73	21.87
Reception apparatus for radio broadcasting4.....	0.05	0.03	1.63	0.01	0.01	0.03	0.48	1.45	3.57	1.28	1.75	3.72	1.79
Recording equipments 5.....	0.16	0.02	0.22	0.02	0.01	0.24	0.05	0.00	0.04	0.64	0.00	0.23	0.22
Telecommunications equipment 6.....	9.76	39.20	23.94	49.42	60.03	21.88	114.91	23.47	15.00	342.64	1.35	11.28	42.38

¹ Electronic calculating machines, cash registers, accounting machines, postage-

² For office machines and data processing machines

³ Include Television sets, decoders etc

⁴ Whether or not combined with sound recording or reproducing apparatus or a

⁵ Sound recording, video recording or reproducing apparatus including or not

⁶ Such as computer, laptops, networking equipments etc plus their parts and

Table 15(a): Local Electricity Generation by Source

KWh Million							
Month	Hydro	Geo - Thermal	Thermal*	Wind	Solar	Co-Generation	Total
2018							
January	222.95	430.49	242.34	3.26	-	1.45	900.49
February	193.43	387.02	249.13	6.86	-	0.62	837.06
March	248.39	448.12	202.18	4.11	-	0.07	902.87
April	316.85	427.73	138.66	3.24	-	0.07	886.55
May	385.88	447.05	82.92	1.70	0.02	0.08	917.65
June	400.86	430.00	82.37	1.23	0.01	0.01	914.48
July	420.32	438.12	86.86	1.69	-	0.02	947.01
August	417.37	426.57	117.23	2.52	0.01	0.02	963.72
September	392.07	439.80	85.33	7.46	0.01	0.02	924.69
October	365.42	432.03	87.21	76.86	0.01	0.02	961.55
November	340.07	397.58	80.15	133.40	5.77	0.02	956.99
December	282.78	423.32	91.53	133.26	7.79	0.04	938.72
2019*							
January	278.92	417.35	114.07	147.55	7.99	0.02	965.90
February	253.91	374.43	98.56	146.21	7.02	0.01	880.14
March	282.83	445.10	99.00	144.00	8.07	0.02	979.02
April	191.99	397.66	181.14	142.21	8.19	0.01	921.20
May	242.63	427.38	110.34	164.12	7.91	0.00	952.39
June	272.42	413.44	146.23	92.38	7.07	0.05	931.59
July	268.91	440.30	133.41	124.89	7.09	0.02	974.62
August	251.48	425.46	131.77	151.43	7.44	0.03	967.61
September	233.80	453.93	104.77	152.91	7.91	0.03	953.34
October	268.40	493.56	69.51	137.42	8.05	0.04	976.98
November	299.19	481.90	62.44	114.03	7.84	0.02	965.42
December	360.88	464.14	62.18	45.57	7.58	0.05	940.40

*Provisional

Fig. 7: Electricity Generation by Source

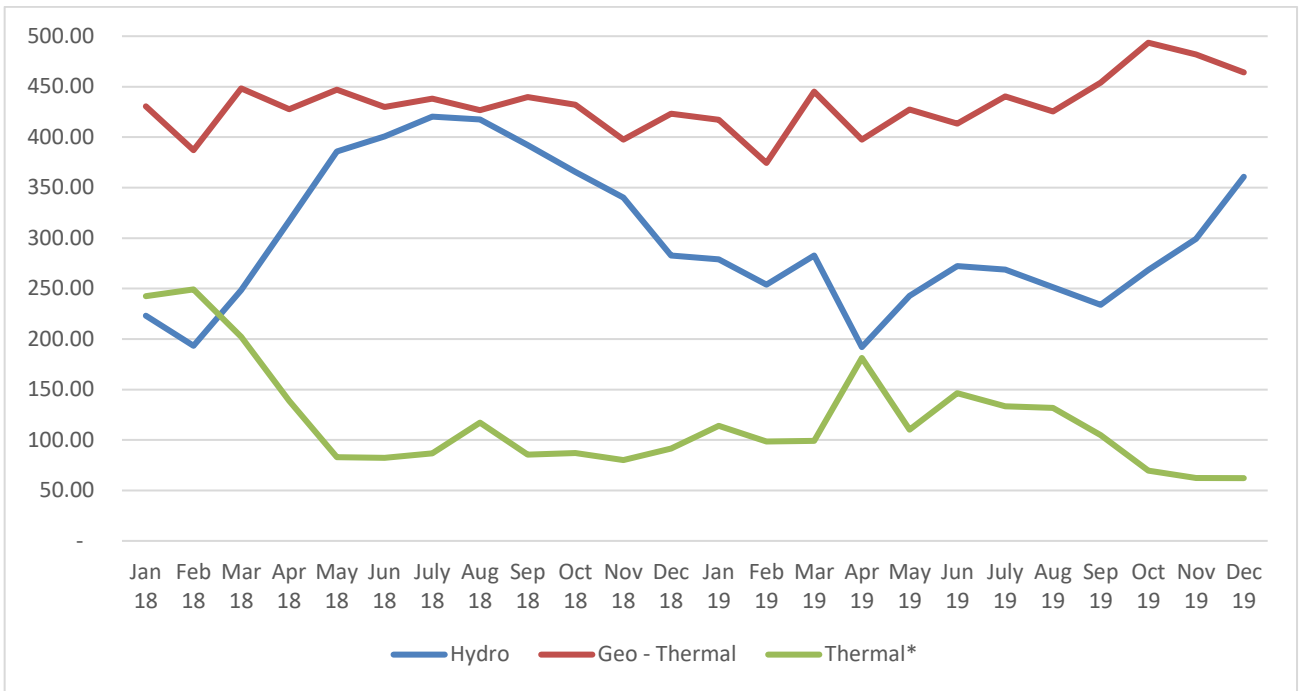


Table 15(b): Generation and Consumption of Electricity

Million KWh										
Month	Generation					Consumption				
	Local Generation	Imports			Total Generation	Total KPLC Sales	Exports			
		Uganda	Tanzania	Ethiopia			Uganda	Tanzania	Total Exports	
2018										
January	900.49	19.04	-	0.35	19.39	919.88	731.06	0.96	0.22	1.18
February	837.06	18.62	-	0.32	18.94	856.00	684.62	0.93	0.09	1.02
March	902.87	11.03	-	0.26	11.29	914.16	745.60	3.20	0.04	3.24
April	886.55	8.20	-	0.14	8.34	894.89	688.30	3.55	0.06	3.61
May	917.65	8.39	-	-	8.39	926.04	712.00	3.24	0.01	3.25
June	914.48	8.38	-	-	8.38	922.86	726.76	3.20	-	3.20
July	947.01	8.19	-	-	8.19	955.20	709.30	3.35	-	3.35
August	963.72	12.06	-	-	12.06	975.78	730.67	2.67	-	2.67
September	924.69	7.60	-	-	7.60	932.29	740.93	3.31	-	3.31
October	961.55	8.90	-	-	8.90	970.45	737.71	3.26	-	3.26
November	956.99	8.86	-	-	8.86	965.85	750.97	3.36	-	3.36
December	938.72	9.89	-	-	9.89	948.61	714.86	3.76	-	3.76
2019*										
January	965.90	15.18	-	-	15.18	981.08	778.12	1.85	0.01	1.86
February	880.14	13.92	-	0.36	14.28	894.42	691.32	1.91	-	1.91
March	979.02	16.75	-	0.39	17.14	996.16	752.26	1.70	-	1.70
April	921.20	26.85	-	0.37	27.22	948.42	736.38	0.71	-	0.71
May	952.39	24.23	-	0.30	24.53	976.92	733.14	0.19	-	0.19
June	931.59	15.50	-	0.35	15.85	947.44	722.34	0.70	-	0.70
July	974.62	16.88	-	0.29	17.17	991.79	747.56	0.68	-	0.68
August	967.61	23.75	-	0.42	24.17	991.78	749.32	0.60	-	0.60
September	953.34	10.97	-	0.39	11.36	964.70	738.73	1.76	-	1.76
October	976.98	12.21	-	0.37	12.58	989.56	752.51	1.83	-	1.83
November	965.42	18.02	-	0.36	18.38	983.80	761.90	1.35	-	1.35
December	940.40	13.81	-	0.37	14.18	954.58	709.22	2.88	-	2.88

*Provisional

Table 15(c): Consumption of Petroleum Fuels

Month	'000 MT							
	AGO (Light Diesel Oil)	Jet	Fuel Oil	Motor Spirit	Illuminating Kerosene	IDO (Heavy Diesel Oil)	LPG	Aviation Gasoline
2018								
January.....	188.50	58.94	55.21	111.36	36.78	0.00	18.48	0.12
February.....	174.78	54.30	45.29	105.75	38.55	0.00	16.24	0.11
March.....	167.95	56.94	56.66	121.07	35.00	0.02	20.40	17.62
April.....	181.18	53.94	29.19	111.36	36.11	0.00	21.65	0.12
May.....	195.01	53.71	26.62	123.34	39.75	0.00	22.21	0.11
June.....	183.63	51.39	25.00	114.63	32.58	0.00	22.38	0.10
July.....	191.28	56.26	25.02	113.14	30.01	0.00	22.58	0.10
August.....	212.37	63.75	28.50	126.09	24.98	0.17	21.48	0.12
September.....	162.57	60.89	23.71	92.88	16.80	0.00	19.52	0.09
October.....	186.38	52.79	37.11	112.84	16.53	0.00	12.65	0.11
November.....	175.30	51.87	25.70	113.73	18.85	0.02	13.96	0.11
December.....	154.21	59.61	24.00	112.81	13.44	0.00	10.77	0.12
2019*								
January.....	183.69	61.25	30.61	119.69	19.54	0.00	28.49	1.33
February.....	183.39	56.64	26.00	115.41	16.00	0.00	26.91	0.74
March.....	186.17	56.48	33.37	113.79	14.83	0.83	20.01	1.40
April.....	195.90	53.49	44.77	125.34	15.38	0.00	18.72	1.21
May.....	195.87	54.50	38.89	121.46	15.45	0.00	18.72	1.38
June.....	169.38	55.05	44.80	104.97	12.52	0.00	13.27	1.28
July.....	189.20	60.32	28.19	137.97	13.20	0.00		1.21
August.....	191.85	63.31	34.34	119.79	12.37	0.00		1.28
September.....	178.76	60.71	32.95	113.23	11.13	0.00		0.12

Source: Ministry of Energy and Petroleum

MT: Denotes Metric Tonnes

*Provisional

Table 15(d): Average Retail Prices for Selected Fuel Products within Nairobi

KSh per litre			
Period	Motor Gasoline Premium	Light Diesel Oil (Gasoil)	Illuminating Kerosene
2018			
January.....	106.30	94.82	74.78
February....	107.92	96.96	76.75
March.....	107.46	97.86	77.45
April.....	106.83	97.86	76.72
May.....	107.17	98.64	78.22
June.....	108.81	103.60	84.10
July.....	112.20	103.25	85.73
August.....	113.73	102.74	84.95
September..	116.79	108.12	108.41
October.....	115.73	109.72	108.84
November...	116.79	108.12	108.41
December...	113.54	112.28	105.22
2019			
January.....	104.21	102.24	101.70
February....	100.09	95.96	96.50
March.....	101.35	96.61	99.46
April.....	106.60	102.13	102.22
May.....	112.03	104.37	104.62
June.....	115.05	104.72	104.26
July.....	115.39	103.88	101.97
August.....	112.53	100.60	103.95
September..	112.81	103.04	100.64
October.....	108.05	101.96	101.08
November...	110.59	104.61	104.06
December...	109.50	101.78	102.31

Table 15(e): Average Retail Prices for Selected Fuels in Kenya (National Average Retail Prices)

Period	Motor Gasoline Premium (KSh per Litre)	Light Diesel Oil (KSh per Litre)	Illuminating Kerosene (KSh per Litre)	L.P.G (KSh per 13 Kg)	Charcoal (KSh per 4 Kg Tin)
2018					
January.....	107.17	95.79	75.74	2,140.37	83.47
February.....	108.79	97.92	77.71	2,150.20	84.49
March.....	108.33	98.82	78.41	2,169.19	107.36
April.....	107.70	98.82	77.68	2,172.24	125.48
May.....	108.04	99.60	79.18	2,164.43	135.64
June.....	109.67	104.55	85.05	2,170.92	138.13
July.....	113.07	104.21	86.69	2,176.31	137.39
August.....	114.58	103.69	85.90	2,177.32	137.71
September.....	117.54	108.97	109.25	2,187.21	141.24
October.....	116.48	110.57	109.68	2,185.79	140.93
November.....	117.54	108.97	109.25	2,141.46	141.12
December.....	114.30	111.89	106.15	2,193.42	141.62
2019					
January.....	104.99	103.10	102.56	2,193.13	141.22
February.....	101.13	96.83	102.56	2,189.99	141.04
March.....	102.13	97.47	97.63	2,191.84	140.42
April.....	107.57	103.09	100.31	2,184.85	145.05
May.....	112.79	105.23	102.49	2,193.17	146.24
June.....	115.82	105.57	105.48	2,192.25	144.14
July.....	116.14	104.74	105.11	2,171.47	145.15
August.....	111.70	104.92	100.60	2,150.27	144.66
September.....	113.57	103.90	101.44	2,141.31	144.74
October.....	108.83	102.82	101.94	2,124.79	147.17
November.....	110.99	105.10	104.53	2,100.88	151.03
December.....	109.91	102.28	102.81	2,101.16	152.37

Fig. 8: Average Prices for Liquefied Petroleum Gas in Kenya ('000 KSh per 13 Kg cylinder)

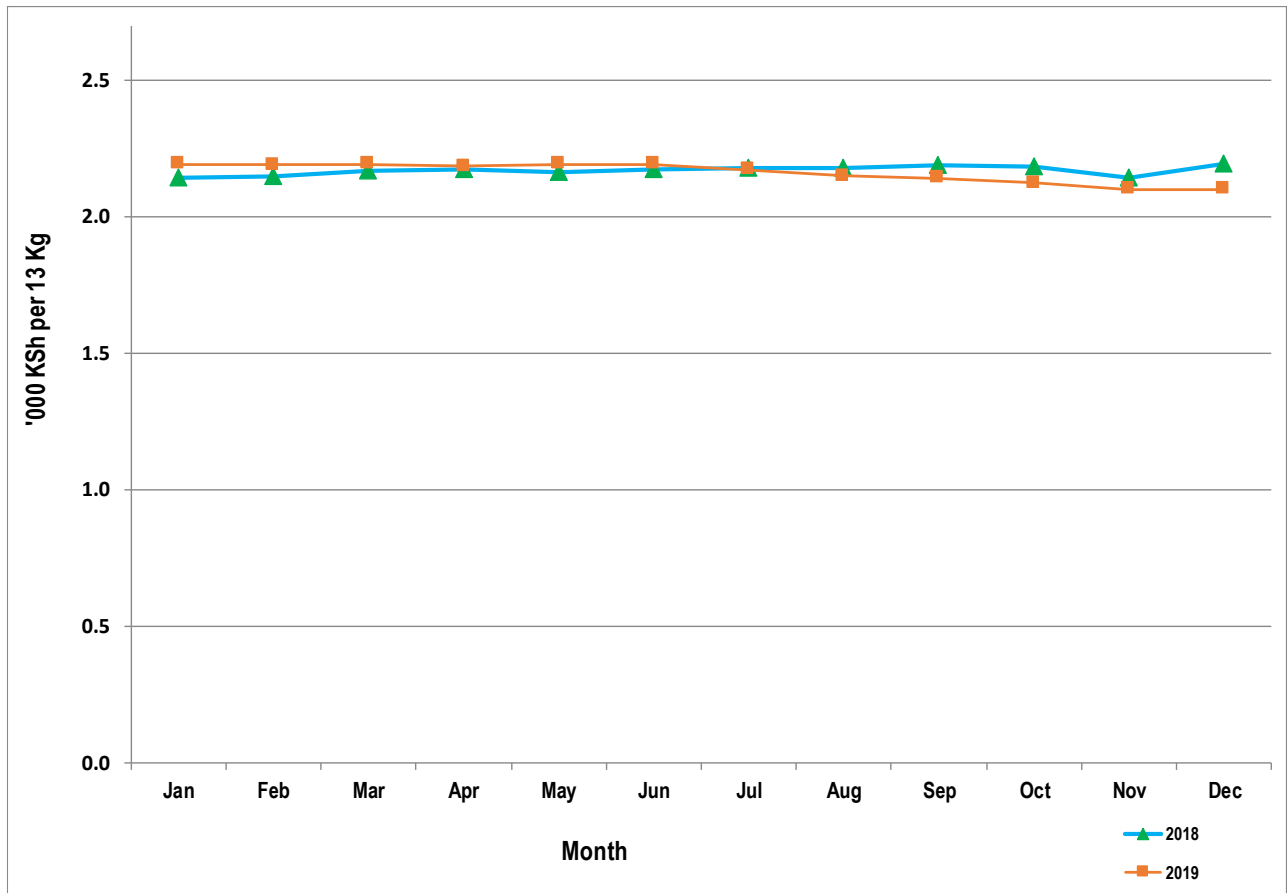


Table 15(f): Murban ADNOC Crude Oil Prices

Month/Year	US\$/ BBL					
	2014	2015	2016	2017	2018	2019
January.....	109.75	46.40	29.95	55.35	66.28	60.81
February.....	109.95	56.55	33.00	56.10	65.98	65.64
March.....	108.30	56.10	38.20	52.60	66.31	68.60
April.....	107.95	60.55	42.00	53.40	70.97	73.05
May.....	109.15	65.75	47.35	51.45	76.71	69.70
June.....	111.65	63.70	49.05	47.30	73.22	62.75
July.....	109.50	57.70	44.60	48.60	76.00	64.86
August.....	104.25	48.85	48.85	48.85	74.91	60.16
September.....	97.95	46.60	45.50	55.70	78.75	62.39
October.....	87.35	47.30	51.35	63.83	81.28	60.88
November.....	77.00	43.55	46.15	63.65	68.05	63.48
December.....	60.65	37.25	54.15	62.06	59.33	

US\$/ BBL: US Dollar per Barrel

Price: Abu Dhabi Free On Board (FOB)

ADNOC: Abu Dhabi National Oil Corporation

Table 16: Value of Building Plans Approved

KSh Million

Month	Actual Value of Buildings			Real *		
	Residential	Non Residential	Aggregate	Residential	Non Residential	Aggregate
2018						
January.....	13,122.47	6,824.92	19,947.39	154.20	78.25	231.85
February.....	10,917.29	9,822.84	20,740.13	128.29	112.62	241.07
March.....	12,810.54	6,607.25	19,417.78	150.53	75.75	225.70
April.....	-	-	-	-	-	-
May.....	12,917.29	7,122.58	20,039.87	151.79	81.66	232.93
June.....	13,409.58	7,207.25	20,616.83	157.57	82.63	239.64
July.....	10,624.92	7,201.69	17,826.61	124.85	82.57	207.20
August.....	10,735.63	4,880.78	15,616.41	126.15	55.96	181.51
September.....	11,132.49	6,147.54	17,280.03	130.82	70.48	200.85
October.....	9,696.37	8,082.13	17,778.50	113.94	92.66	206.65
November.....	15,319.80	9,354.40	24,674.20	180.02	107.25	286.80
December.....	11,152.41	5,206.55	16,358.96	131.05	59.69	190.15
2019						
January.....	10,435.29	7,064.94	17,500.23	114.03	75.22	188.92
February.....	10,357.13	7,435.92	9,792.55	113.18	79.16	105.71
March.....	12,256.40	8,991.05	21,247.45	133.94	95.73	229.37
April.....	11,511.20	7,347.15	18,858.35	125.79	78.22	203.58
May.....	15,042.46	8,190.28	23,232.74	164.38	87.20	250.80
June.....	16,277.14	6,346.94	22,624.08	177.87	67.58	244.23

* Actual deflated by relevant construction cost indices (Dec1972 =100)

- No Building plans were approved

Table 17(a): Domestic Production of Sugar

Month/Year	Metric Tonnes					
	2014	2015	2016	2017	2018	2019*
January	64,298	63,227	64,499	53,071	62,819	53,060
February	60,044	57,917	59,863	49,094	53,833	46,139
March	63,365	63,389	65,708	42,238	49,148	45,418
April	47,279	46,280	48,802	26,230	36,682	35,312
May	44,094	44,081	45,156	15,246	28,933	36,307
June	42,866	46,098	53,797	16,113	28,320	28,544
July	55,912	47,957	56,948	17,882	30,105	25,097
August	50,140	54,089	52,232	10,892	35,646	32,705
September	47,915	61,069	44,686	21,649	37,652	33,365
October	42,197	56,360	48,929	32,296	45,324	35,259
November	34,455	43,401	51,298	43,175	38,768	
December	64,298	48,089	46,422	49,240	38,268	
Total	592,668	631,957	638,340	377,126	485,498	371,206

Source: Sugar Directorate

*Provisional

Table 17(b): Production of Soft Drinks

	'000 Litres						
Month	2013	2014	2015	2016	2017	2018	2019*
January	32,809	39,007	41,348	41,348	50,409	52,062	52,062
February	36,068	39,146	41,440	41,440	43,353	49,685	50,806
March	42,552	40,320	48,865	48,865	50,623	52,580	51,419
April	27,345	37,885	42,148	42,148	46,399	45,690	54,515
May	27,581	40,430	36,874	36,874	40,742	41,482	50,671
June	30,919	28,706	36,274	36,202	45,875	44,827	45,054
July	28,464	33,790	32,086	32,158	41,980	43,725	43,170
August	27,697	33,404	38,432	38,508	41,217	48,795	47,161
September	36,026	35,899	40,176	40,291	40,221	45,956	47,094
October	34,810	41,601	42,936	43,203	45,275	46,546	
November	36,272	40,134	40,025	40,141	45,073	50,201	
December	43,438	49,142	49,966	49,966	66,378	54,021	
Total	403,981	459,464	490,568	491,143	557,548	575,569	441,953

**Provisional*

Table 17(c): Production of Assembled Vehicles

Month/Year	Numbers						
	2013	2014	2015	2016	2017	2018*	2019*
January	435	511	601	363	276	395	433
February	536	792	949	587	578	529	616
March	496	737	922	650	645	548	635
April	584	798	813	658	436	409	741
May	560	832	827	642	434	407	734
June	609	856	745	482	323	366	558
July	617	809	757	491	483	587	656
August	578	828	931	605	302	434	717
September	590	886	1,029	623	351	606	603
October	652	887	1,139	357	370	569	614
November	733	724	972	461	364	476	
December	558	586	496	376	322	327	
Total	6,948	9,246	10,181	6,295	4,884	5,653	6,307

**Provisional*

Table 17(d): Production of Galvanized Sheets

Metric Tonnes							
Month/Year	2013	2014	2015	2016	2017	2018	2019*
January.....	25,528	22,090	21,304	21,330	26,230	23,919	20,105
February.....	22,874	18,573	20,078	20,102	22,994	21,890	22,739
March.....	26,296	21,267	22,797	20,120	22,574	22,048	26,290
April.....	26,010	25,989	20,674	23,109	23,225	21,434	23,198
May.....	23,866	27,433	23,132	21,980	23,081	22,271	22,480
June.....	26,147	24,465	20,358	20,180	15,424	21,434	24,663
July.....	25,007	21,779	18,415	18,320	22,640	22,510	23,248
August.....	27,398	25,753	20,871	24,190	15,296	21,847	21,900
September.....	25,051	26,126	20,581	21,045	24,188	22,425	22,598
October.....	27,588	26,732	26,024	18,328	21,312	23,906	
November.....	26,628	25,763	25,764	19,143	24,357	22,877	
December.....	23,706	18,539	16,938	19,431	21,438	21,266	
Total	306,099	284,509	256,938	247,278	262,759	267,828	207,221

*Provisional

Table 17(e): Cement Production and Consumption

Month/Year	2016		2017		2018		2019*	
	Production	Consumption	Production	Consumption	Production	Consumption	Production	Consumption
January.....	533,490	472,218	565,440	535,018	523,625	499,260	485,178	479,983
February.....	531,813	506,914	491,307	460,044	508,648	495,128	470,146	469,809
March.....	541,438	493,410	570,522	537,948	510,674	497,791	507,037	505,465
April.....	568,253	538,118	535,061	497,821	496,527	475,365	503,722	502,158
May.....	585,929	551,501	482,762	441,110	464,422	449,160	489,301	489,637
June.....	547,238	505,067	513,313	496,172	477,053	470,112	481,985	471,476
July.....	575,193	556,244	553,631	527,774	518,656	511,240	499,945	500,601
August.....	591,612	559,766	451,651	427,594	538,071	531,119	495,099	492,695
September.....	528,494	504,639	531,067	506,694	503,641	499,568	482,593	479,177
October.....	573,034	552,243	510,140	488,813	504,959	502,719	497,930	492,670
November.....	584,780	547,359	489,376	454,727	496,346	494,038	453,092	448,081
December.....	545,956	514,498	536,021	484,172	487,312	481,880		
TOTAL.....	6,707,230	6,301,977	6,230,293	5,857,887	6,029,934	5,907,380	5,366,028	5,331,752

*Provisional

Table 17(f): Milk Intakes in the Formal Sector

Million Litres							
Month/Year	2013	2014	2015	2016	2017	2018	2019*
January.....	49.32	54.04	57.17	56.80	45.13	51.55	68.07
February.....	42.48	46.60	37.80	52.83	46.24	47.30	54.66
March.....	40.28	49.26	35.77	48.41	38.64	49.85	54.33
April.....	44.43	45.01	35.59	54.35	47.09	52.01	41.46
May.....	50.62	43.56	52.97	49.49	47.24	49.63	48.29
June.....	44.46	44.47	51.02	66.37	48.87	50.33	52.33
July.....	43.52	40.52	51.59	58.47	42.55	53.18	63.54
August.....	37.90	41.76	50.94	56.15	54.95	52.56	60.46
September.....	38.79	41.66	51.66	43.67	55.81	56.37	63.21
October.....	38.87	43.52	55.42	56.93	58.14	55.25	68.30
November.....	45.33	44.32	68.28	54.09	55.21	57.02	
December.....	47.03	45.32	58.87	50.66	51.51	68.15	
Total.....	523.03	540.04	615.85	648.22	535.71	643.20	574.64

Source: Kenya Dairy Board

* Provisional

Fig. 9: Milk Intake in the Formal Sector

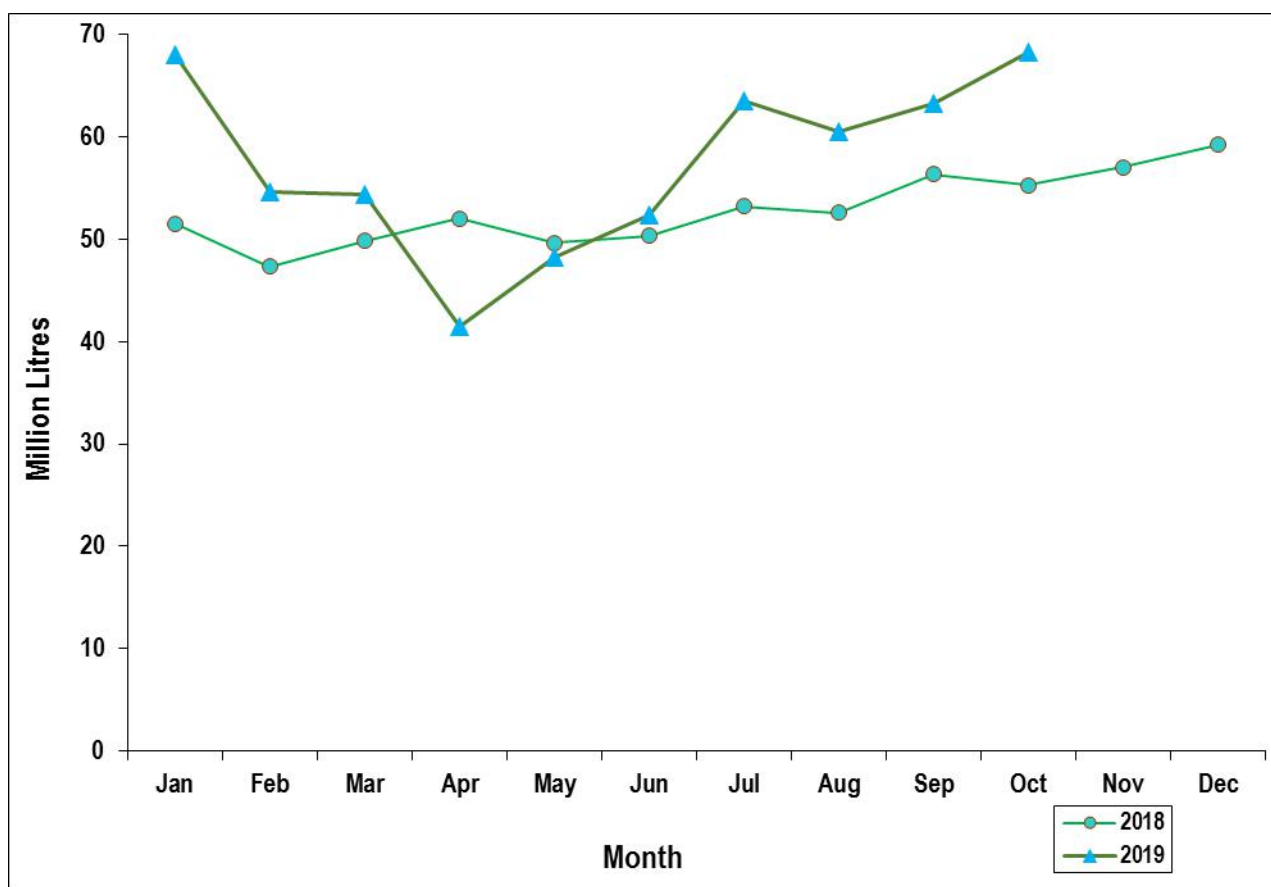


Table 18: Visitor Arrivals through J.K.I.A and M.I.A

Month	AIRPORT		Total
	JKIA	MIA	
2018			
January	105,262	14,533	119,795
February	98,532	12,792	111,324
March	100,441	11,024	111,465
April	94,236	5,205	99,441
May	93,730	4,735	98,465
June	114,097	5,157	119,254
July	141,763	9,025	150,788
August	145,231	9,589	154,820
September	114,539	9,916	124,455
October	115,597	9,343	124,940
November	103,229	8,391	111,620
December	115,856	18,403	134,259
2019**			
January	113,050	15,740	128,790
February	106,198	12,761	118,959
March	93,571	20,159	113,730
April	103,522	4,769	108,291
May	98,596	3,591	102,187
June	122,122	6,650	128,772
July	149,994	8,520	158,514
August	148,816	10,988	159,804
September	121,668	9,199	130,867
October	138,033	11,157	149,190
November	108,755	12,315	121,070
December	119,646	12,373	132,019

Source: Kenya Tourism Board

* Visitors arrivals exclude Kenyans

**Revised

Fig. 10: Visitor Arrivals through J.K.I.A and M.I.A

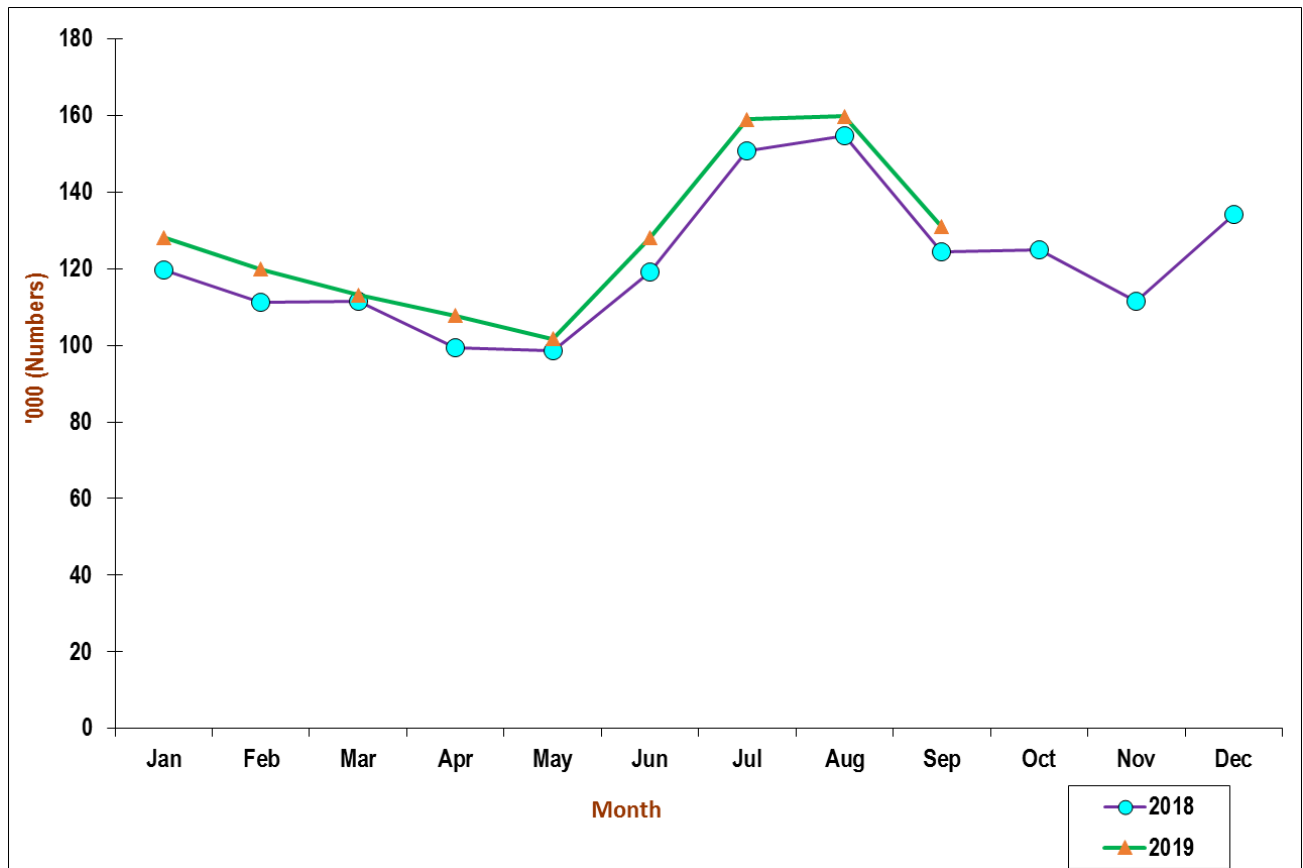


Table 19(a): Jomo Kenyatta international airport-Embarked Passengers by Port of Destination

PORTS/MONTH	2018						2019						
	Nov	Dec	Jan	Feb	Mar	Apr	May	Jun	Jul	Aug	Sep	Oct	Nov
Amsterdam	10,645	10,790	11,348	10,211	9,847	10,780	11,036	12,421	12,908	12,657	11,919	11,187	9,653
Brussels	0	0	0	0	0	0	0	0	0	0	0	0	0
London	8,872	8,023	7,744	7,502	9,273	10,852	10,879	11,816	9,961	11,606	10,434	10,173	7,747
Paris	7,655	6,351	5,479	3,569	5,648	6,369	4,632	6,185	5,916	6,577	3,768	4,926	5,579
Zurich	2,165	2,727	2,849	3,134	2,307	2,271	1,866	4,806	3,027	4,472	2,628	2,895	817
Other Europe	259	1,049	8,844	117	142	5	0	1,681	2,906	3,697	11,895	10,129	10,011
Total Europe	29,596	28,940	36,264	24,533	27,217	30,277	28,413	36,909	34,718	39,009	40,644	39,310	33,807
New York	3,044	4,320	5,174	2,720	3,906	3,281	3,851	4,750	6,548	7,099	4,821	3,332	3,533
Other North America	0	0	0	0	0	0	0	0	0	0	0	0	0
Total North America	3,044	4,320	5,174	2,720	3,906	3,281	3,851	4,750	6,548	7,099	4,821	3,332	3,533
Dubai	16,003	21,654	19,759	16,002	20,560	20,540	13,967	18,432	22,731	21,197	23,561	19,868	17,488
Jeddah	932	1,079	827	582	780	815	1,278	594	1,199	2,327	1,169	1,231	1,256
Other Middle East	16,753	21,384	21,224	15,706	15,300	17,831	17,381	17,872	22,970	37,177	25,399	18,698	20,776
Total Middle East	33,688	44,117	41,810	32,290	36,640	39,186	32,626	36,898	46,900	60,701	50,129	39,797	39,520
Mumbai	2,656	2,942	2,115	1,522	2,247	2,336	2,121	2,429	2,701	3,213	2,827	2,057	2,795
Bangkok	1,546	1,312	1,058	41	1,493	1,447	1,071	515	1,547	2,962	1,741	1,371	1,420
Other Far East	764	834	694	180	573	537	673	1,398	747	2,530	1,807	1,571	998
Total Far East	4,966	5,088	3,867	1,743	4,313	4,320	3,865	4,342	4,995	8,705	6,375	4,999	5,213
Addis Ababa	15,121	16,931	14,030	14,426	15,734	14,306	14,894	15,845	16,069	20,863	17,316	17,112	17,564
Bujumbura	667	596	510	479	405	402	843	898	1,324	1,284	1,082	956	1,234
Dar-es-alaam	5,104	5,604	4,608	4,752	4,351	4,447	6,112	4,941	5,807	5,912	6,362	4,060	7,335
Entebbe	10,863	9,747	6,940	5,744	9,098	9,552	11,332	10,324	9,490	10,089	10,658	9,610	11,128
Kigali	4,085	5,569	3,894	4,460	5,010	4,398	3,645	3,149	6,244	5,744	4,231	4,475	4,768
Kinshasa	470	282	295	155	661	699	516	1,237	965	582	615	510	441
Other East & Central Africa	2,484	2,109	1,896	3,405	2,004	2,059	2,531	2,545	2,465	3,900	2,810	2,468	2,394
Total East & Central Africa	38,794	40,838	32,173	33,421	37,263	35,863	39,873	38,939	42,364	48,374	43,074	39,191	44,864
Mauritius	1,457	2,008	974	746	1,273	1,984	1,851	2,230	2,481	3,663	2,273	2,390	2,215
Seychelles	567	759	435	294	602	789	611	1,298	884	1,085	664	618	455
Zanzibar	2,451	3,968	2,208	3,293	2,051	2,036	1,480	3,084	2,819	4,848	3,204	3,290	2,701
Other Indian Ocean Islands	903	814	386	166	1,089	1,076	786	1,161	575	2,556	804	1,366	1,148
Total Indian Ocean Islands	5,378	7,549	4,003	4,499	5,015	5,885	4,728	7,773	6,759	12,152	6,945	7,664	6,519
Abidjan	380	388	320	425	516	525	393	670	663	1,252	531	473	505
Douala	173	99	629	259	346	281	134	314	187	114	939	206	187
Lagos	1,478	1,360	1,039	684	1,404	2,115	1,234	1,103	1,496	3,144	1,321	1,215	1,218
Accra	1,007	1,186	723	753	1,459	1,426	999	999	1,471	1,711	1,325	1,194	1,076
Other West Africa	557	634	340	273	442	329	396	582	529	79	552	739	211
Total West Africa	3,595	3,667	3,051	2,394	4,167	4,676	3,156	3,668	4,346	6,300	4,668	3,827	3,197
Johannesburg	7,511	6,867	5,916	4,780	8,859	9,014	6,694	7,083	7,030	7,888	8,758	7,932	7,788
Harare	778	974	567	75	662	1,049	888	707	518	755	1,109	974	908
Lilongwe	1,093	1,044	654	672	810	854	879	289	995	1,094	1,242	973	1,140
Lusaka	1,038	822	624	272	809	930	1,292	2,021	1,142	1,212	1,626	1,459	1,199
Cape Town	0	0	1,566	1,505	0	1,834	0	0	2,035	0	2,005	1,973	1,903
Other South Africa	4,528	1,085	1,074	692	1,028	974	1,124	897	1,447	2,434	1,818	1,079	3,823
Total Southern Africa	14,948	10,792	10,401	7,996	12,168	14,655	10,877	10,997	13,167	13,383	16,558	14,390	16,761
Cairo	2,519	2,941	2,584	2,261	2,960	2,566	2,754	2,690	3,294	3,566	2,969	3,015	3,100
Khartoum	583	587	538	5	428	441	454	573	438	626	286	213	191
Juba	2,737	2,264	2,841	2,183	2,361	2,233	2,201	2,248	2,643	2,411	1,761	1,652	2,413
Other North Africa	715	462	824	564	100	4	21	11	2	14	77	14	5
Total North Africa	6,554	6,254	6,787	5,013	5,849	5,244	5,430	5,522	6,377	6,617	5,093	4,894	5,709
Other International	7,785	7,763	7,356	6,711	7,306	6,487	7,022	6,199	5,378	6,764	6,385	5,574	8,811
Total International	145,304	155,008	150,886	121,320	143,844	149,874	139,841	155,997	171,552	209,104	184,692	162,978	167,934

Table 19(b): Jomo Kenyatta international airport- Landed Passengers by Port of Origin

PORTS/MONTH	2018												Number
	2019												
	Nov	Dec	Jan	Feb	Mar	Apr	May	Jun	Jul	Aug	Sep	Oct	
Amsterdam	17,035	18,336	17,050	15,039	14,715	16,910	16,764	18,429	19,813	18,796	17,017	18,035	15,687
Brussels	0	0	0	0	0	227	0	0	0	0	0	0	0
London	13,294	13,226	12,615	11,651	11,958	13,761	14,267	16,093	16,967	16,550	13,748	14,888	11,896
Paris	8,680	9,695	9,302	8,492	8,086	10,836	8,932	12,010	13,484	12,881	11,621	11,931	10,638
Zurich	3,736	5,505	4,383	4,173	3,801	3,939	3,788	5,638	5,981	5,767	4,989	4,433	4,644
Other Europe	8,269	8,951	8,717	7,991	7,507	6,021	7,444	9,989	8,142	12,024	9,378	11,515	9,848
Total Europe	51,014	55,713	52,067	47,346	46,067	51,694	51,195	62,159	64,387	66,018	56,753	60,802	52,713
New York	3,060	5,540	4,352	2,826	3,256	3,204	4,080	5,019	6,284	5,600	3,684	3,150	3,581
Other North America	0	0	0	0	0	0	0	0	0	0	0	0	0
Total North America	3,060	5,540	4,352	2,826	3,256	3,204	4,080	5,019	6,284	5,600	3,684	3,150	3,581
Dubai	22,262	30,198	25,590	22,110	25,473	24,277	18,521	27,097	32,954	31,006	26,007	24,456	24,259
Jeddah	2,178	2,361	1,649	1,686	1,659	1,788	1,885	2,527	2,395	2,767	1,641	1,833	1,664
Other Middle East	20,547	23,967	19,866	15,518	15,410	20,077	18,513	22,964	34,360	33,191	20,890	17,886	17,338
Total Middle East	44,987	56,526	47,105	39,314	42,542	46,142	38,919	52,588	69,709	66,964	48,538	44,175	43,261
Mumbai	6,708	7,642	8,280	7,498	8,142	8,804	9,353	7,924	8,310	8,256	7,944	7,403	7,528
Bangkok	6,288	6,311	6,462	5,254	6,453	6,635	8,464	6,187	7,102	6,686	6,365	6,096	6,266
Other Far East	2,026	2,093	1,810	1,762	1,923	1,956	1,928	3,167	4,225	2,096	3,358	2,891	2,846
Total Far East	15,022	16,046	16,552	14,514	16,518	17,395	19,745	17,278	19,637	17,038	17,667	16,390	16,640
Addis Ababa	19,074	22,580	18,609	18,232	17,775	16,441	17,288	19,104	20,506	21,968	19,449	19,801	21,107
Bujumbura	1,494	1,523	1,250	1,387	1,550	1,539	2,428	2,767	3,117	3,518	3,357	2,447	2,637
Dar-es-laam	11,472	11,315	10,722	10,215	10,918	10,386	9,900	10,211	11,582	12,532	12,467	11,262	11,605
Entebbe	18,384	19,296	16,442	16,105	18,037	18,323	18,732	18,881	18,452	20,202	18,989	17,845	18,965
Kigali	7,332	8,019	6,628	5,834	7,527	7,080	6,966	7,331	9,335	10,578	8,107	8,029	8,056
Kinshasa	2,245	2,668	1,616	1,847	2,662	3,858	2,994	2,828	4,267	4,435	4,152	3,043	3,615
Other East & Central Africa	6,484	6,612	6,826	7,090	7,126	5,363	5,891	6,411	8,635	8,798	6,469	6,695	6,123
Total East & Central Africa	66,485	72,013	62,093	60,710	65,595	62,990	64,199	67,533	75,894	82,031	72,990	69,122	72,108
Mauritius	1,919	1,999	1,818	1,396	1,412	2,431	2,564	2,737	3,075	3,416	2,933	2,755	3,441
Seychelles	1,548	1,670	1,287	827	1,093	1,726	1,720	1,085	1,323	1,390	1,102	1,314	1,136
Zanzibar	6,399	6,914	6,423	6,857	6,197	4,971	3,678	5,976	6,767	9,346	6,670	7,039	5,613
Other Indian Ocean Islands	12,357	10,628	8,922	7,135	7,468	7,408	5,601	5,484	6,705	10,449	8,084	9,272	8,693
Total Indian Ocean Islands	22,223	21,211	18,450	16,215	16,170	16,536	13,563	15,282	17,870	24,601	18,789	20,380	18,883
Abidjan	1,507	1,546	1,410	1,586	1,954	1,654	1,658	1,590	2,246	1,984	2,208	2,162	2,093
Douala	962	946	858	758	942	732	688	748	1,079	1,059	1,013	273	0
Lagos	4,161	4,629	4,918	4,212	4,319	5,056	4,634	4,128	4,136	5,188	4,435	3,969	3,045
Accra	3,804	3,540	3,628	3,137	3,603	3,701	3,843	3,928	4,168	4,199	3,692	3,709	3,935
Other West Africa	2,291	2,696	1,872	1,748	2,014	2,284	2,813	2,088	2,445	2,458	2,435	1,834	2,025
Total West Africa	12,725	13,357	12,686	11,441	12,832	13,427	13,636	12,482	14,074	14,888	13,783	11,947	11,098
Johannesburg	14,543	17,842	12,813	11,916	12,660	13,536	12,227	15,585	13,909	15,288	15,281	12,783	14,671
Harare	2,982	4,398	3,227	2,002	2,210	4,171	4,276	3,875	3,459	4,122	4,176	3,457	3,380
Lilongwe	2,246	2,668	1,896	1,237	2,203	2,026	1,689	2,368	2,669	2,635	2,238	2,234	2,439
Lusaka	3,673	4,293	3,234	2,571	3,240	4,199	3,558	3,535	2,774	4,616	4,502	4,473	4,342
Cape Town	1,272	2,354	1,776	1,438	2,124	2,109	1,399	2,551	1,316	1,594	2,232	1,968	2,548
Other South Africa	7,122	7,956	6,200	5,071	5,726	5,970	5,754	5,749	7,039	7,582	6,744	6,078	5,276
Total Southern Africa	31,838	39,511	29,146	24,235	28,163	32,011	28,903	33,663	31,166	35,837	35,173	30,993	32,656
Cairo	2,012	2,312	2,294	1,894	1,909	1,834	1,582	1,917	2,091	2,407	1,893	2,032	2,184
Khartoum	1,818	1,549	1,016	746	804	1,183	1,486	957	988	1,494	1,644	691	574
Juba	3,082	3,667	2,578	2,952	3,693	3,438	3,125	3,019	3,329	3,563	2,739	2,725	2,863
Other North Africa	546	1,131	586	511	33	6	10	6	2	3	71	15	0
Total North Africa	7,458	8,659	6,474	6,103	6,439	6,461	6,203	5,899	6,410	7,467	6,347	5,463	5,621
Other International	6,338	337	6,340	6,646	7,033	6,737	8,042	3,896	932	1,480	946	1,042	1,865
Total International	258,090	283,373	255,265	229,350	244,615	256,597	248,485	275,799	306,363	321,924	274,670	263,464	258,426

Table 19(c): New Vehicle Registration

	2018				2019									Number
Body Type	Sep	Oct	Nov	Dec	Jan	Feb	Mar	Apr	May	Jun	Jul	Aug	Sep	
Saloons.....	733	1,010	879	869	932	750	663	984	890	949	1,053	794	850	
Station Wagons.....	4,803	6,958	5,914	5,814	6,598	5,432	4,561	6,605	6,576	6,405	7,827	5,294	6,322	
Vans.....	409	491	452	447	506	362	392	529	555	451	531	463	570	
Pick Ups.....	616	418	496	638	423	325	343	543	432	392	518	440	399	
Mini Buses.....	56	63	70	61	169	102	151	161	183	158	211	127	159	
Buses.....	79	108	90	92	71	74	102	106	120	114	126	106	119	
Lorries.....	638	729	660	734	405	453	560	612	667	551	646	593	573	
Trailers.....	213	170	132	166	104	98	122	156	118	111	179	147	176	
Motor Cycles.....	14,756	17,661	18,043	17,286	17,664	16,048	18,304	19,717	19,063	14,608	20,118	16,542	15,995	
Three Wheelers.....	554	604	626	595	776	451	833	427	557	598	649	754	708	
Wheeled Tractors..	179	191	279	211	193	283	148	182	164	116	153	142	115	
Others.....	98	63	72	80	1,236	234	255	330	376	407	430	292	295	
Totals.....	23,134	28,466	27,713	26,991	29,077	24,612	26,434	30,352	29,701	24,860	32,441	25,694	26,281	

Source: National Transport and Safety Authority

Table 19(d): Passenger and Cargo Movement on the Standard Gauge Railway

Month	PASSENGER						FREIGHT			
	2017		2018		2019		2018		2019	
	No. Passengers	Revenue (KSh)	No. Passengers	Revenue (KSh)	No. Passengers	Revenue (KSh)	Tonnage	Total Revenue (KSh)	Tonnage	Total Revenue (KSh)
January	-	-	135,772	110,200,620	122,110	125,603,470	22,346	25,500,249	366,991	507,860,104
February	-	-	118,360	101,931,110	112,207	125,106,870	57,633	49,878,557	313,936	435,185,740
March	-	-	131,698	125,533,190	121,237	175,688,410	164,254	181,540,087	343,293	460,997,943
April	-	-	140,581	91,972,800	159,328	123,271,010	208,577	258,500,427	372,661	1,002,665,000
May	-	-	116,171	129,464,225	116,601	141,627,650	228,800	294,078,696	336,606	929,475,000
June	74,691	79,550,680	127,381	132,369,200	133,002	145,928,374	268,787	425,339,660	349,947	953,787,500
July	89,718	87,273,090	137,676	194,025,660	135,582	148,146,300	306,105	527,416,399	387,616	1,088,642,500
August	83,344	74,339,250	165,971	120,752,130	165,588	165,777,610	309,902	429,421,708	430,450	1,154,765,000
September	84,748	58,252,100	122,958	121,732,090	122,123	132,920,490	309,873	422,571,065	356,919	1,007,791,632
October	87,756	79,926,600	128,456	165,436,010			344,283	476,128,539		
November	133,618	141,414,160	153,885	220,865,540			331,752	500,019,744		
December	145,180	106,906,580	186,718	97,290,070			346,362	500,698,440		
TOTAL	699,055	627,662,460.00	1,665,627	1,611,572,645.00	1,187,778	1,284,070,184.00	2,898,674	4,091,093,570.34	3,258,419	7,541,170,419.00

Source: Kenya Railways Corporation