

Leading Economic Indicators



Kenya Inflation rate



AUGUST 2021

Contents

Table 1(a): Kenya Consumer Price Indices	7
Table 1(b): Kenya Inflation rate	8
Table 2: Mean Foreign Exchange rates of Kenyan Shilling against Selected Major Currencies at the end of the Month	10
Table 3: Interest rate (%)	11
Table 4: Nairobi Securities Exchange	12
Table 5(a): Money Supply	14
Table 5(b): Gross Foreign Exchange Reserves	15
Table 6: Coffee Sales and Prices*	16
Table 7: Tea Production and Auction Prices	17
Table 8: Cane Deliveries	18
Table 9(a): Average Monthly Retail Prices for Dry Maize, 2019 (per Kg)	19
Table 9(b): Average Monthly Retail Prices for Dry Maize, 2020 (per Kg)	20
Table 9(C): Average Monthly Retail Prices for Dry Beans, 2019 (per Kg)	21
Table 9(d): Average Monthly Retail Prices for Dry Beans, 2020 (per Kg)	22
Table 10: Exports of Coffee and Tea	23
Table 11: Monthly Exports of Fresh Horticultural Produce	24
Table 12: External Trade	25
Table 13(a): Major Destinations of Domestic Exports	26
Table 13(b): Domestic Exports by Broad Economic Category	27
Table 14 (a) Major Origins of Imports	28
Table 14(b): Imports by Broad Economic Category	29
Table 14 (c): Mobile Money Transactions	30
Table 14(d): International trade in ICT	31
Table 15(a): Local Electricity Generation by Source	32
Table 15(b): Generation and Consumption of Electricity	33
Table 15(c): Consumption of Petroleum Fuels	34
Table 15(d): Average Retail Prices for Selected Fuel Products within Nairobi	35
Table 15(e): Average Retail Prices for Selected Fuels in Kenya (National Average Retail Prices)	36
Table 15(f): Opec Reference basket and Murban Crude Oil Prices	37
Table 16: Value of Building Plans Approved for Nairobi City County	38
Table 17(a): Domestic Production of Sugar	39
Table 17(b): Production of Soft Drinks	40
Table 17(c): Production of Assembled Vehicles	41
Table 17(d): Production of Galvanized Sheets	42
Table 17(e): Cement Production and Consumption	43
Table 17(f): Milk Intakes in the Formal Sector	44
Table 18: Visitor Arrivals through J.K.I.A and M.I.A	45
Table 19(a): Jomo Kenyatta international airport-Embarked Passengers by Port of Destination	46
Table 19(b): Jomo Kenyatta international airport- Landed Passengers by Port of Origin	47
Table 19(c): New Vehicle Registration	48
Table 19(d): Passenger and Cargo Movement on the Standard Gauge Railway	49
Table 19(e): Monthly Cargo Throughput at the port of Mombasa	50

LIST OF FIGURES

	Page Number
Fig. 1: Inflation rates	9
Fig. 2: End of Month Mean Exchange rate of Kenya Shillings against Major Selected Currencies	10
Fig. 3: Nairobi Securities Exchange 20 Share Index	13
Fig. 4: Coffee Sales at the Nairobi Coffee Exchange	16
Fig. 5: Tea Production	17
Fig. 6: Cane Deliveries	18
Fig. 7: Electricity Generation by Source	32
Fig. 8: Average Prices for Liquefied Petroleum Gas in Kenya ('000 KSh per 13 Kg cylinder)	36
Fig. 9: Milk Intake in the Formal Sector	44
Fig. 10: Visitor Arrivals through J.K.I.A and M.I.A	45

KEY HIGHLIGHTS

OVERVIEW

The Monthly Leading Economic Indicators report highlights changes in Consumer Price Indices (CPI) and inflation, interest & exchange rates. In addition, the report presents changes in selected indicators of international trade, agriculture, energy, manufacturing, building and construction, tourism and transport.

MACROECONOMIC INDICATORS

The Consumer Price Index (CPI) increased from 115.45 points in July 2021 to 115.71 points in August 2021. The overall rate of inflation rose from 6.55 per cent to 6.57 per cent over the same period. In August 2021, the Kenyan Shilling depreciated against all major currencies except the SA Rand. The average yield rate for the 91-day Treasury bills, which is a benchmark for the general trend of interest rates dropped from 6.64 per cent in July 2021 to 6.57 per cent in August 2021.

The Nairobi Securities Exchange (NSE) 20 share index increased from 1,974 points in July 2021 to 2,021 points in August 2021. At the same time the total number of shares traded increased from 285 million to 345 million. The total value of NSE shares traded increased from KSh 9.28 billion in July 2021 to KSh 11.85 billion in August 2021.

Broad money supply (M3), a key indicator for monetary policy formulation, increased from KSh 4,174.64 billion in July 2021 to KSh 4,222.77 billion in August 2021. The value of Gross Foreign Exchange Reserves decreased from KSh 1,577.35 billion in July 2021 to KSh 1,549.78 billion in August 2021. On the other hand, the value of Net Foreign Exchange Reserves dropped from KSh 753.44 billion to KSh 709.01 billion during the same period.

AGRICULTURE



The quantity of coffee auctioned at the Nairobi Coffee Exchange was 1,277.97 MT in July 2021 while the average auction price stood at KSh 674.11 per kilogram over the same period. The quantity of produced tea decreased from 45,321.64 MT in May 2021 to 43,468.95 MT in June 2021. The price of processed tea dropped from KSh 205.22 per kilogram in May 2021 to KSh 196.05 per kilogram in June 2021. The quantity of cane deliveries increased from 636.46 thousand metric tonnes in May 2021 to 639.35 thousand metric tonnes in June 2021.

The quantity of cut-flower exports in August 2021 was 19,842.63 MT while its value was KSh 9,810.21 million. The quantity of vegetable exports increased from 3,522.29 MT in July 2021 to 7,206.65 MT in August 2021. The value of vegetable exports increased from KSh 1,297.88 million to KSh 2,664.92 million during the same period.

INTERNATIONAL TRADE

Volume of trade dropped from KSh 236.58 billion in July 2021 to KSh 234.29 billion in August 2021. The value of total exports increased from KSh 59.41 billion in July 2021 to KSh 61.34 billion in August 2021, while the value of imports decreased from KSh 177.17 billion in July 2021 to KSh 172.95 billion in August 2021. Domestic exports by Broad Economic Category (BEC) indicated that food and beverages was the main export category in August 2021 accounting for 41.89 per cent of the domestic exports, while non-food industrial supplies accounted for 28.64 per cent of the domestic exports.

Quantity of coffee exported decreased from 2,696.29 MT in July 2021 to 2,504.38 MT in August 2021 while its value dropped from KSh 1,763.90 million to KSh 1,657.82 million over the same period. The quantity of tea exported increased from 43,844.48 MT in July 2021 to 44,421.07 MT in August 2021. The value of exported tea also rose from KSh 9,203.50 million to KSh 9,874.40 million over the same period.

Imports by BEC indicate that non-food industrial supplies was the main import category in August 2021 with a share of 39.89 per cent. Fuel and lubricants; Machinery & other capital equipment; and transport equipment accounted for 18.89, 14.81 and 8.39 per cent of the total value of imports, respectively while foods and beverages accounted for 9.36 per cent of the total imports in August 2021.

ENERGY



Total local electricity generation increased from 1,037.35 million KWh in July 2021 to 1,043.30 million KWh in August 2021. In the international market, the price of the OPEC crude oil basket decreased from US Dollars 73.53 per barrel in July 2021 to US Dollars 70.33 per barrel in August 2021.

The national average domestic retail oil prices of motor gasoline premium was KSh 127.98 in August 2021. The price of light diesel remained at KSh 108.58 per litre in August 2021. Similarly, the average price for Kerosene remained at KSh 98.78 per litre during the same period. Charcoal prices averaged KSh 59.38 per Kg in August 2021. The price of a 13-Kg cylinder of gas averaged KSh 2,420.68 in August 2021.

MANUFACTURING, BUILDING AND CONSTRUCTION



The quantity of cement produced increased from 698,424 MT in June 2021 to 741,647 MT in July 2021. Consumption of cement rose from 686,024 MT in June 2021 to 726,873 MT in July 2021. Sugar production increased from 57,796 Metric tonnes in May 2021 to 58,968 Metric tonnes in June 2021.

Production of assembled vehicles decreased from 609 units in May 2021 to 576 units in June 2021. Milk uptake in the formal sector dropped from 73.19 million litres in June 2021 to 70.31 million litres in July 2021.

ICT, TOURISM AND TRANSPORT



The total number of mobile money transactions was 184.51 million in August 2021 while their value stood at KSh 586.52 billion. The value of imports for telecommunication equipment decreased from KSh 3,417.78 million in July 2021 to KSh 1,284.60 million in August 2021.

The total number of visitors arriving through Jomo Kenyatta (JKIA) and Moi International Airports (MIA) increased from 48,532 persons in June 2021 to 69,025 persons in July 2021. The number of passengers who landed at Jomo Kenyatta International Airport (JKIA) increased from 115,206 persons in July 2021 to 122,559 persons in August 2021. On the other hand Passengers who embarked at JKIA by port of destination increased from 108,527 persons to 136,025 persons over the same period. Total monthly throughput at the port of Mombasa dropped from 2,785.66 thousand metric tonnes in July 2021 to 2,767.86 thousand metric tonnes in August 2021.

Table 1(a): Kenya Consumer Price Indices

Kenya CPI: Base period February 2019=100

Group	Nairobi			Nairobi Combined	Rest of Urban Areas	Kenya CPI
	Lower Income	Middle Income	Upper Income			
2020						
January.....	107.50	102.99	102.65	105.48	107.25	106.51
February....	108.36	103.34	103.41	106.16	107.89	107.17
March.....	108.85	103.52	103.42	106.50	108.17	107.47
April.....	109.88	104.04	103.69	107.27	109.36	108.49
May.....	109.93	103.74	104.00	107.24	109.57	108.60
June.....	109.70	104.14	103.84	107.22	109.01	108.27
July.....	110.01	103.37	103.79	107.14	109.22	108.35
August.....	109.90	103.49	104.55	107.21	109.54	108.57
September..	110.04	103.63	104.26	107.30	109.48	108.57
October.....	110.40	104.42	104.60	107.79	110.89	109.60
November..	111.31	104.76	104.59	108.41	112.46	110.78
December..	113.06	105.65	105.10	109.74	113.38	111.87
2021						
January.....	113.63	106.20	105.63	110.30	114.20	112.58
February....	114.56	106.75	106.56	111.11	114.97	113.36
March.....	115.15	107.12	107.25	111.64	115.36	113.81
April.....	116.11	107.64	107.38	112.36	116.44	114.75
May.....	116.37	107.75	107.86	112.60	116.67	114.98
June.....	116.48	107.88	108.15	112.73	116.80	115.11
July.....	116.80	108.63	108.42	113.19	117.05	115.45
August.....	116.86	108.88	108.54	113.31	117.42	115.71

Notes

- 1.Nairobi Lower Income Group constitute of Households spending KSh. 46,355 or less per month in February 2015 (they are 70.89% of the households).
- 2.Nairobi Middle-Income Group consitute of Households spending between KSh. 46,356 up to and including KSh. 184,394 per month in February 2015 (they are 25.58% of the households).
- 3.Nairobi Upper Income Group consitute of Households spending above KSh. 184,395 per month in February 2015 (they are 3.53% of the households).

Table 1(b): Kenya Inflation rate

Period	Inflation Rates					
	Nairobi				Rest of Urban Areas	Kenya CPI
	Lower Income	Middle Income	Upper Income	Combined		
2020						
February.....	8.36	3.34	3.41	6.16	7.89	7.17
March.....	6.90	3.29	2.89	5.28	6.24	5.84
April.....	6.77	3.40	2.90	5.25	6.55	6.01
May.....	6.08	2.68	2.67	4.61	5.84	5.33
June.....	5.42	2.79	2.29	4.23	4.84	4.59
July.....	5.44	1.84	2.01	3.90	4.68	4.36
August.....	5.30	1.79	2.68	3.88	4.69	4.36
September.....	5.26	1.67	2.29	3.77	4.50	4.20
October.....	5.24	2.31	2.57	4.01	5.43	4.84
November.....	5.26	2.32	2.28	3.99	6.28	5.33
December.....	6.08	2.86	2.38	4.64	6.30	5.62
2021						
January.....	5.70	3.11	2.91	4.57	6.48	5.69
February.....	5.73	3.30	3.05	4.66	6.56	5.78
March.....	5.78	3.48	3.70	4.82	6.65	5.90
April.....	5.67	3.45	3.55	4.74	6.47	5.76
May.....	5.86	3.86	3.71	4.99	6.48	5.87
June.....	6.17	3.60	4.15	5.14	7.15	6.32
July.....	6.18	5.09	4.46	5.65	7.17	6.55
August.....	6.33	5.20	3.81	5.69	7.19	6.57

Fig. 1: Inflation rates

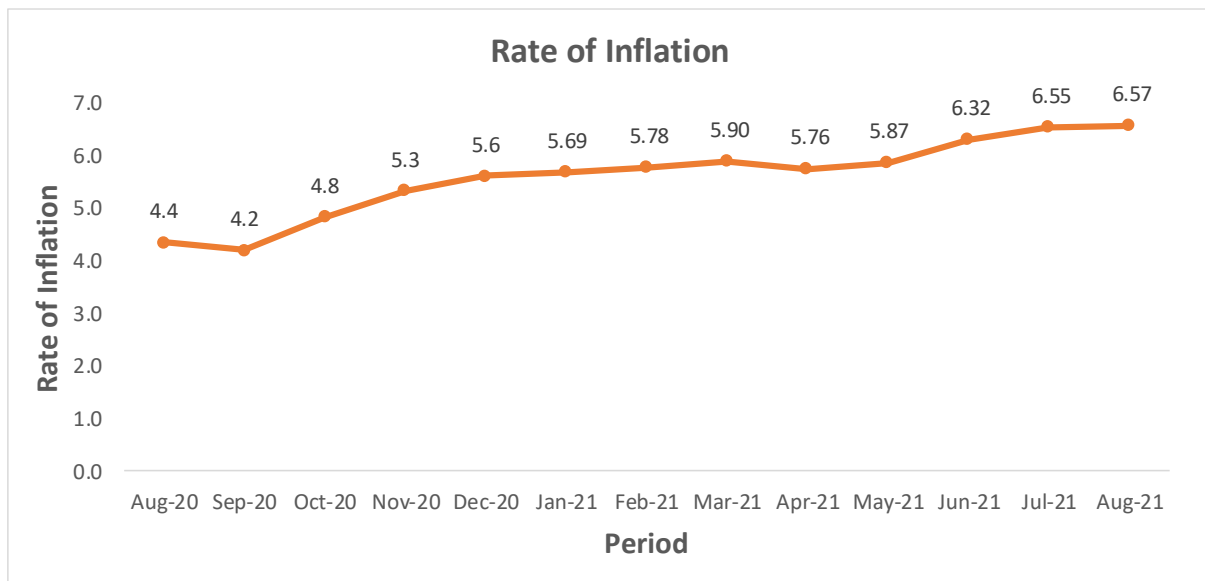


Table 2: Mean Foreign Exchange rates of Kenyan Shilling against Selected Major Currencies at the end of the Month

Year	2020					2021							
Currency	Aug	Sep	Oct	Nov	Dec	Jan	Feb	Mar	Apr	May	Jun	Jul	Aug
1 US Dollar.....	108.32	108.41	108.64	109.25	110.59	109.83	109.68	109.73	107.95	107.43	107.81	108.14	109.24
1 Pound Sterling...	141.98	140.89	140.94	144.13	148.42	149.75	151.80	152.21	149.30	151.06	151.45	149.37	150.87
1 Euro.....	128.36	128.01	127.85	129.16	134.33	133.80	132.62	130.96	129.13	130.41	130.07	127.89	128.59
100 Japanese Yen	102.45	102.68	103.22	104.65	106.55	105.90	104.12	101.20	99.03	98.43	97.99	98.00	99.47
1 SA Rand.....	6.46	6.48	6.59	7.01	7.41	7.26	7.41	7.32	7.49	7.63	7.76	7.45	7.39
USHS/KES.....	34.02	34.08	34.22	33.97	33.16	33.61	33.43	33.38	33.59	33.09	32.84	32.84	32.39
TSHS/KES.....	21.42	21.40	21.35	21.23	20.97	21.11	21.14	21.13	21.48	21.59	21.51	21.44	21.23

Source: Central Bank of Kenya

Fig. 2: End of Month Mean Exchange rate of Kenya Shillings against Major Selected Currencies

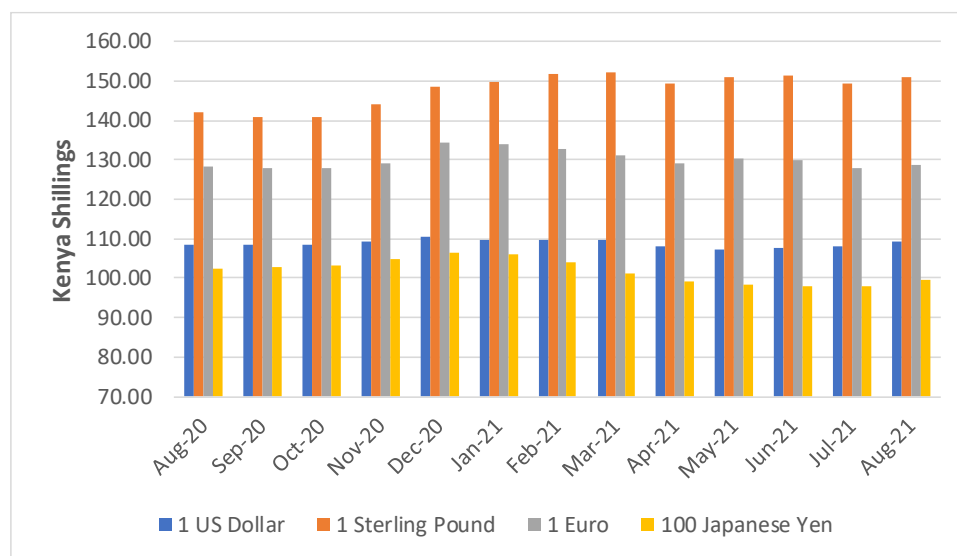


Table 3: Interest rate (%)

Month/Year	Average Yield Rates 91 – Days Treasury Bills	Central Bank Rate	Rates for Commercial Banks Loans and Advances (Weighted Average)	Overdraft Rates	Average Inter – Bank Deposit Rate	Bank Rates	Savings (Commercial Banks Rates)
2020							
January	7.23	8.25	12.29	11.97	7.07	4.39	4.25
February	7.31	8.25	12.19	11.82	7.06	4.84	4.20
March	7.29	7.25	12.09	11.79	7.07	4.40	4.15
April	7.21	7.00	11.92	11.55	7.01	5.13	4.21
May	7.27	7.00	11.95	11.61	6.96	3.91	4.18
June	7.14	7.00	11.89	11.24	6.86	3.27	4.15
July	6.24	7.00	11.94	11.18	6.78	2.12	4.11
August	6.20	7.00	11.94	11.18	6.63	2.56	4.10
September	6.29	7.00	11.75	11.15	6.41	2.95	3.78
October	6.49	7.00	11.98	11.44	6.26	2.69	3.38
November	6.69	7.00	11.99	11.39	6.31	3.27	3.42
Dec	6.90	7.00	12.02	11.51	6.30	5.29	2.70
2021							
January	6.92	7.00	12.00	11.43	6.31	5.12	2.73
February	6.90	7.00	12.02	11.52	6.46	4.49	3.35
March	7.03	7.00	12.05	11.61	6.46	5.23	3.48
April	7.10	7.00	12.08	11.66	6.30	5.12	2.66
May	7.15	7.00	12.06	11.57	6.30	4.62	2.55
June	7.03	7.00	12.02	11.18	6.37	4.63	2.55
July	6.64	7.00	12.09	11.44	6.34	4.17	2.51
August	6.57	7.00				3.10	

Source; Central Bank of Kenya

Table 4: Nairobi Securities Exchange

	Number of Equity Transactions	Number of Shares (Million)	Value of Shares (Million KSh)	NSE 20 Share Index
2020				
January.....	21,418	336	12,336	2,600
February.....	17,610	385	12,265	2,337
March.....	26,251	639	19,092	1,966
April.....	20,941	439	12,660	1,958
May.....	24,065	430	14,573	1,948
June.....	25,903	553	12,302	1,942
July.....	28,225	517	13,470	1,804
August.....	22,980	471	10,543	1,795
September.....	23,589	525	13,924	1,852
October.....	17,369	219	5,881	1,784
November.....	17,275	381	11,393	1,760
December.....	18,108	369	10,237	1,868
2021				
January.....	19,554	294	8,852	1,882
February.....	19,422	331	10,820	1,916
March.....	23,925	373	12,064	1,846
April.....	20,893	293	9,878	1,867
May.....	21,784	386	14,162	1,872
June.....	23,889	421	13,953	1,928
July.....	24,245	285	9,275	1,974
August.....	27,232	345	11,854	2,021

Source: Nairobi Securities Exchange Limited

Base Jan 1966=100

Fig. 3: Nairobi Securities Exchange 20 Share Index

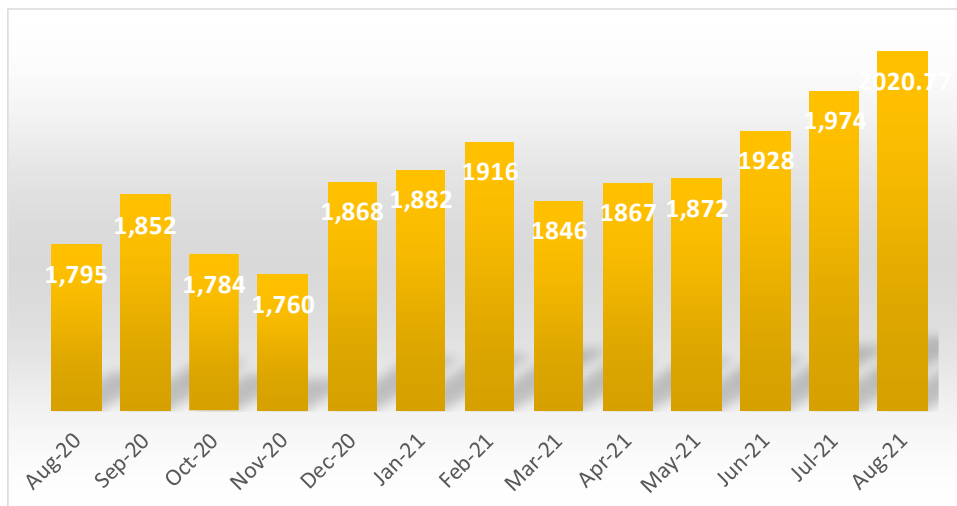


Table 5(a): Money Supply

KSh million

As at end of month	Money (M1)*	Quasi – Money	Total (M2)***	Foreign currency deposits	Broad Money (M3)****	% Change
2020						
January	1,524,030	1,391,678	2,915,709	611,296	3,527,005	0.08
February	1,568,052	1,402,049	2,970,101	625,949	3,596,050	1.96
March	1,595,107	1,423,750	3,018,857	642,154	3,661,011	1.81
April	1,595,268	1,443,383	3,038,651	657,302	3,695,953	0.95
May	1,602,094	1,479,236	3,081,331	671,450	3,752,781	1.54
June	1,666,550	1,534,707	3,201,257	662,375	3,863,633	2.95
July	1,683,552	1,553,156	3,236,708	668,737	3,905,444	1.08
August	1,655,723	1,527,030	3,182,753	664,218	3,846,971	-1.50
September	1,665,778	1,514,748	3,180,526	662,974	3,843,500	-0.09
October	1,741,975	1,481,554	3,223,529	699,221	3,922,750	2.06
November	1,759,898	1,478,291	3,238,189	714,124	3,952,313	0.75
December	1,720,337	1,529,886	3,250,223	740,678	3,990,900	0.98
2021						
January	1,716,364	1,520,544	3,236,907	755,977	3,992,885	0.05
February	1,734,582	1,528,872	3,263,455	779,534	4,042,989	1.25
March	1,716,744	1,533,546	3,250,290	779,702	4,029,992	-0.32
April	1,718,771	1,559,275	3,278,045	762,790	4,040,835	0.27
May	1,726,768	1,567,399	3,294,167	745,442	4,039,609	-0.03
June	1,779,227	1,598,250	3,377,477	760,336	4,137,813	2.43
July	1,788,031	1,628,882	3,416,913	757,731	4,174,644	0.89
August	1,810,345	1,641,354	3,451,700	771,070	4,222,769	1.15

Source: Central Bank of Kenya

* Currency in circulation less cash in banks plus all demand deposits except those of National & County government, Banks, non-residents and foreign currency deposits

** All other deposits in commercial banks, except those of National government.

***Broad money (M2) is the sum of M1, Quasi money in Banks and net Quasi money in NBFIs..

**** Broad Money (M3) includes M2 and Foreign currency deposits

M2=(M1+QM-NBFIs)

M3=M2+FCD

Table 5(b): Gross Foreign Exchange Reserves

							KSh Million*
Month	Central Monetary Authority		Total	Foreign Assets		Gross Total	Net of Foreign Exchange Liabilities
	Central Bank	National Government**		Commercial Banks	NBFI		
2020							
January	896,710	1,855	896,732	390,881	207	1,287,820	776,129
February	888,229	1,858	888,227	412,126	102	1,300,455	786,418
March	903,785	1,914	905,700	399,097	118	1,304,915	769,721
April	896,448	1,964	898,412	421,551	110	1,320,073	764,631
May	1,039,754	1,966	1,041,720	433,868	85	1,476,780	855,183
June	1,097,758	1,963	1,099,721	419,795	119	1,519,635	887,434
July	1,033,624	2,039	1,035,663	418,356	84	1,454,104	839,494
August	1,030,279	2,057	1,032,336	431,065	66	1,463,466	804,926
September	986,082	2,046	988,127	414,445	402	1,402,975	751,260
October	945,817	2,058	947,875	461,436	65	1,409,376	750,198
November	937,929	2,108	940,037	479,360	56	1,419,453	732,809
December	927,442	2,106	929,545	512,517	881	1,442,947	748,602
2021							
January	909,624	2,252	911,876	537,245	242	1,449,363	753,438
February	892,240	2,246	894,486	553,047	85	1,447,618	718,473
March	882,726	2,205	884,931	559,497	62	1,444,490	693,232
April	879,858	2,200	882,058	545,891	84	1,428,033	648,885
May	880,715	2,208	882,923	524,380	81	1,407,384	615,406
June	1,098,287	2,205	1,100,491	515,950	67	1,616,509	785,986
July	1,081,471	2,204	1,083,676	493,585	94	1,577,354	753,443
August	1,040,410	2,222	1,042,632	506,518	632	1,549,782	709,009

Source: Central Bank of Kenya

* Includes encumbered reserves

**National Government includes reserve position in the Fund and deposits with Crown Agents.

Table 6: Coffee Sales and Prices*

Month	2019			2020**			2021**		
	QUANTITY (MT)	PRICE (\$ /kg)	PRICE (Ksh /kg)	QUANTITY (MT)	PRICE (\$ /kg)	PRICE (Ksh /kg)	QUANTITY (MT)	PRICE (\$ /kg)	PRICE (Ksh /kg)
January	4,166.77	4.46	452.57	3,048.63	4.34	438.95	3,824.34	6.34	697.01
February	5,723.84	4.49	449.47	4,409.60	4.24	427.28	5,325.48	6.06	664.49
March	4,057.03	2.97	298.47	4,845.46	4.06	421.92	4,317.75	4.96	544.14
April	5,307.40	2.01	203.37	2,242.47	2.75	294.70	2,196.29	4.04	435.74
May**	4,084.00	1.98	200.58	1,125.04	2.59	276.10	-	-	-
June**	2,020.80	1.89	191.97	-	-	-	501.79	5.50	593.43
July	671.60	1.91	196.94	1,310.43	3.32	357.53	1,277.97	6.23	674.11
August	1,646.63	2.10	216.51	1,208.67	4.86	525.29			
September	1,521.79	2.24	232.60	1,912.58	4.47	484.47			
October	2,540.68	2.51	259.85	1,328.52	4.85	526.80			
November	1,116.76	3.24	331.71	1,318.42	5.20	568.36			
December	770.82	4.29	435.44	1,666.58	5.98	660.07			
Annual	33,628.12	2.84	289.12	24,416.40	4.24	452.86	17,443.62	5.52	601.49

Source: Coffee Directorate

* Auction Price

NB: MT denotes Metric Tonnes

*** Provisional

** Nairobi Coffee Exchange was in recess in June 2020 and May 2021

Fig. 4: Coffee Sales at the Nairobi Coffee Exchange

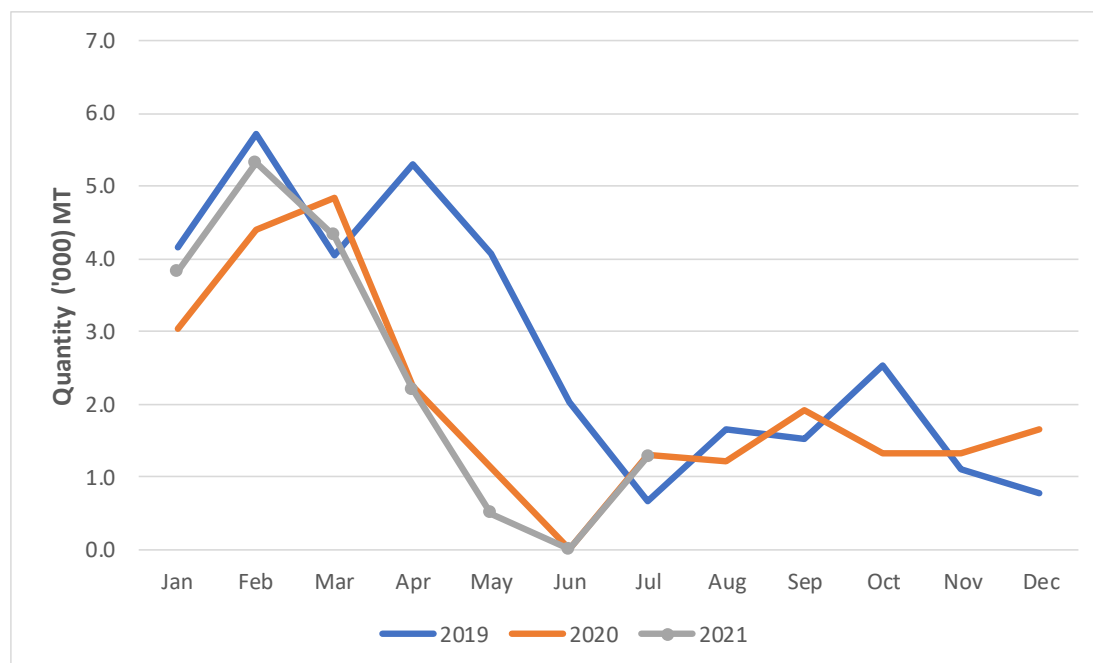


Table 7: Tea Production and Auction Prices

Months	2020			2021*		
	QUANTITY (MT)	PRICE (\$/Kg)	PRICE (KSh/Kg)	QUANTITY (MT)	PRICE (\$/Kg)	PRICE (KSh/Kg)
January	53,635.65	2.29	231.50	48,896.13	2.03	222.81
February	49,201.18	2.13	214.49	43,398.65	2.10	230.27
March	55,732.73	1.99	206.53	48,692.71	2.00	219.05
April	49,656.07	2.11	225.07	44,299.46	1.90	206.58
May	47,003.93	1.97	210.37	45,321.64	1.91	205.22
June	46,377.67	1.86	197.62	43,468.95	1.82	196.05
July	36,554.22	1.81	194.15			
August	38,524.78	2.00	216.61			
September	43,412.74	2.03	220.18			
October	48,274.64	1.98	214.85			
November	47,679.78	1.99	217.58			
December	54,411.94	1.94	215.13			
Annual	570,465.34	2.01	213.67	274,077.53	1.96	213.33

Source: Tea Directorate

MT denotes Metric Tonnes

*Provisional

Fig. 5: Tea Production

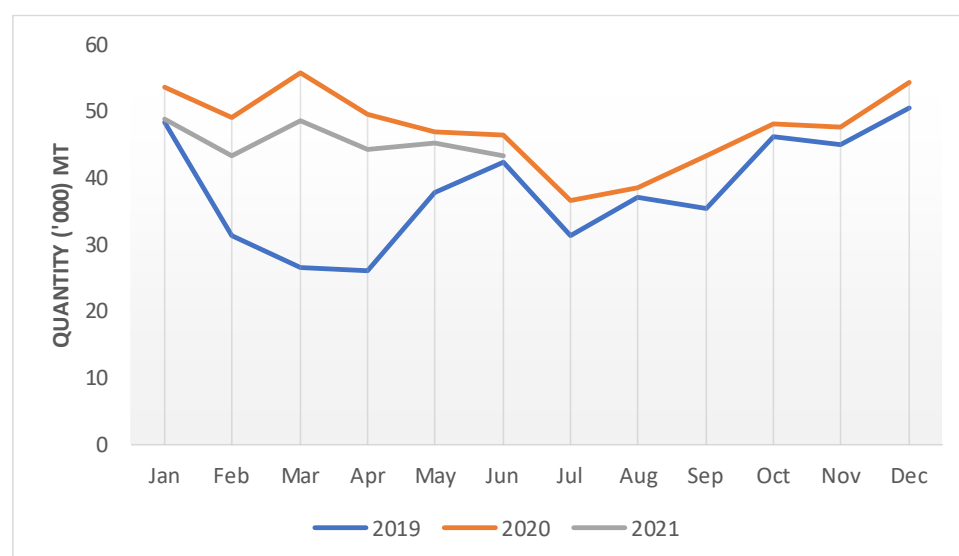


Table 8: Cane Deliveries

Month	000 Metric Tonnes				
	2017 ⁺	2018 ⁺	2019 ⁺	2020	2021
January	581.60	687.52	538.67	522.89	681.54
February	519.40	555.88	453.48	529.94	660.44
March	470.73	445.17	456.17	583.14	709.46
April	304.79	324.41	381.71	534.69	631.43
May	231.97	266.43	348.04	544.36	636.46
June	243.81	314.13	259.27	572.37	639.35
July	246.89	378.60	266.97	625.61	
August	176.33	438.73	357.56	629.10	
September	351.75	445.69	397.52	645.31	
October	407.06	492.95	406.53	644.24	
November	578.31	491.96	357.45	594.18	
December	638.97	420.70	381.74	468.59	
Total	4,751.61	5,262.16	4,605.10	6,894.40	3,958.67

Source : Sugar Directorate

* Provisional

Revised ⁺

Fig. 6: Cane Deliveries

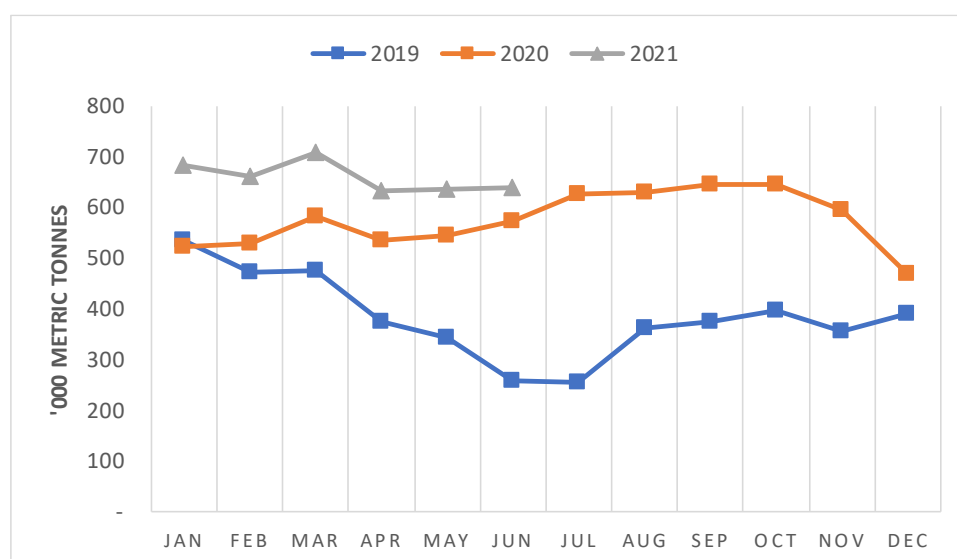


Table 9(a): Average Monthly Retail Prices for Dry Maize, 2020 (per Kg)

Market Name	January	February	March	April	May	June	July	August	September	October	November	December
Kiambu	50.0	50.0	50.0	-	-	-	50.0	50.0	56.7	-	-	-
Limuru	45.7	45.0	43.3	-	-	-	50.0	43.8	43.3	39.4	37.5	-
Thika	42.5	40.0	43.3	-	-	-	45.0	36.3	21.3	41.0	50.0	47.5
Githurai	42.5	43.3	45.0	-	-	-	35.0	35.0	35.0	39.0	40.0	40.0
Gatundu	40.0	40.0	-	-	-	-	45.0	44.5	40.0	40.0	40.0	40.0
Kutus	43.5	40.2	-	-	-	-	-	-	33.3	37.1	36.4	36.4
Kerugoya	43.8	47.6	-	-	-	-	-	-	-	-	34.8	36.5
Muthithi	44.2	-	33.5	-	-	-	-	30.0	30.3	-	29.8	39.6
Makuyu	47.7	-	41.9	-	-	-	-	36.8	39.1	-	39.0	41.8
Kiriaini	44.0	-	33.3	-	-	-	-	36.7	33.7	35.4	-	38.7
Oi Kalou	56.7	62.5	65.0	62.5	60.0	55.0	50.0	50.0	50.0	45.0	50.0	47.5
Ndaragwa	36.7	43.8	37.5	35.0	49.2	48.8	51.0	-	-	-	75.0	45.0
Nyeri	47.7	47.1	47.6	-	-	-	-	-	35.9	40.1	37.2	39.5
Karatina	47.1	46.0	47.6	-	-	-	-	-	36.9	38.9	45.2	47.6
Nanyuki	56.2	53.4	46.0	-	-	-	-	-	-	-	-	-
Nyahururu	44.9	44.4	44.4	-	-	-	-	-	-	-	-	-
Ukunda	50.0	49.5	49.0	46.3	43.0	46.3	41.6	40.0	49.0	44.0	42.5	43.0
Kwale	48.0	50.0	50.0	42.5	41.0	47.0	43.0	40.0	47.0	41.0	40.0	47.8
Voi	-	-	-	-	-	-	-	-	-	-	40.0	40.0
Mpeketoni	40.0	-	-	-	-	-	-	-	-	-	-	-
Mkunguni	46.4	45.0	45.0	-	-	-	50.0	50.0	-	45.0	45.0	45.0
Mwembe Tayari	69.0	65.0	71.3	66.3	65.0	63.8	63.0	63.8	63.8	63.0	53.8	52.5
Majengo	66.0	68.8	81.7	-	-	-	-	-	60.0	63.0	61.7	60.0
Sega	70.0	65.0	60.0	70.0	62.0	67.5	62.0	63.8	62.5	68.0	66.3	60.0
Kongowea	50.0	51.3	46.3	45.0	45.0	45.0	45.0	43.8	41.3	45.0	45.0	41.3
Runyenjes	48.6	53.3	63.5	-	71.5	40.7	-	-	-	-	-	-
Embu Town	46.2	46.8	47.6	-	27.9	30.5	-	-	-	-	-	-
Iciara	48.1	59.2	65.2	-	29.1	29.5	-	-	-	-	-	-
Kiriiri	52.9	63.6	71.4	-	76.7	45.2	-	-	-	-	-	-
Siakago	44.2	55.6	71.4	-	-	-	-	-	-	-	-	-
Kalundu	-	30.0	30.0	30.0	35.0	35.0	33.0	32.5	32.5	33.0	40.0	-
Machakos Town	50.0	50.0	43.1	43.0	45.0	-	40.0	40.8	40.0	40.0	50.0	-
Tala	42.0	40.0	-	40.0	40.0	-	35.0	33.0	35.4	37.5	-	-
Maua	41.3	-	-	-	-	-	-	-	-	-	35.0	35.0
Kianjai	44.4	30.6	27.8	-	-	-	-	-	33.3	-	33.3	33.3
Gakoromere	51.4	42.6	33.3	-	-	-	-	-	36.1	38.9	38.9	38.9
Wote	42.0	-	30.0	-	-	35.0	35.0	35.0	35.0	35.0	35.0	35.0
Garissa Town	70.0	66.3	70.0	65.0	66.0	77.5	72.5	70.0	70.0	70.0	70.0	70.0
Wajir Town	100.0	-	100.0	-	-	-	-	100.0	100.0	100.0	100.0	100.0
Isiolo Town	50.0	50.0	50.0	-	-	-	-	-	-	-	38.8	40.0
Daraja Mbili	47.5	-	36.2	39.4	35.6	-	-	-	-	-	-	-
Kibirigo	41.4	-	-	-	-	-	-	-	-	-	-	-
Keroka	41.9	-	-	-	-	-	-	-	-	-	-	-
Riochanda	41.9	-	-	-	-	-	-	-	-	30.4	28.0	-
Nyabite	-	-	-	-	-	-	-	-	-	43.5	-	-
Kibuye	40.8	41.3	40.1	41.8	41.3	44.0	43.0	39.1	36.2	34.9	36.4	36.2
Ahero	39.3	37.6	40.1	41.7	42.4	43.3	41.2	33.8	34.2	33.9	34.7	34.7
Kiboswa	37.4	33.5	36.4	41.8	39.5	37.7	38.7	38.4	35.3	35.7	34.8	34.8
Sondu	39.7	37.5	38.8	44.5	43.1	42.3	42.4	34.4	34.8	34.2	34.8	34.6
Kegonga	31.7	23.0	-	-	-	-	-	-	-	-	-	29.3
Oyugis	-	-	34.7	44.0	42.4	40.0	34.5	33.0	32.0	28.0	28.0	28.5
Kehacha	35.8	26.0	-	-	-	-	-	-	-	-	25.6	26.2
Migori	44.2	38.2	-	-	-	-	-	-	-	23.7	30.1	29.6
Soko Mjinga	43.5	-	40.3	41.7	-	-	-	-	-	-	-	34.1
Lodwar	77.3	-	-	-	-	-	-	-	-	-	91.7	77.4
Kabarnet	35.0	-	-	-	-	-	44.4	39.9	33.5	30.0	30.0	30.0
Kimulot	44.0	44.0	-	-	-	-	-	-	-	37.5	33.0	32.0
Sotik	40.0	40.0	-	-	-	-	-	-	-	37.0	37.0	36.0
Bomet	42.0	40.0	-	-	-	-	-	-	-	36.0	38.0	36.0
Nakuru Town	43.3	45.0	45.0	-	-	-	-	41.5	57.5	45.0	43.3	40.0
Kapsabet	38.5	38.0	38.0	-	-	-	-	35.8	28.3	25.5	28.1	-
Chepsonoi	37.3	39.6	40.0	-	-	-	-	36.4	27.9	25.6	28.0	-
Mulot	44.0	40.0	-	-	-	-	-	-	-	33.5	31.5	32.0
Kitale	41.4	41.7	41.7	41.7	41.7	41.7	41.3	40.6	41.5	37.0	27.4	34.1
Endebess	34.1	32.8	33.3	32.8	33.3	-	-	-	-	-	-	-
Sibanga	42.8	41.5	38.5	35.0	40.3	-	-	-	-	-	-	-
Eldoret	-	40.0	40.0	40.0	40.0	43.8	49.0	42.5	40.0	38.0	36.3	30.0
Burn Forest	35.0	35.0	28.0	36.0	36.0	36.0	36.0	39.0	29.0	25.2	21.5	24.0
Turbo	-	35.0	35.6	38.1	35.0	38.1	46.0	42.5	40.0	35.5	30.0	30.0
Kipkaren	-	35.0	35.6	36.9	35.0	38.8	47.0	45.0	40.0	35.0	31.9	30.0
Iten	34.6	-	-	-	-	-	-	45.0	-	-	-	-
Kajiado	50.0	45.0	44.5	45.8	44.0	41.3	48.0	52.0	50.0	50.0	51.3	48.8
Bungoma Town	-	-	-	-	-	60.2	43.8	32.8	29.0	28.6	29.4	30.5
Bumala	-	-	-	-	-	-	76.7	76.3	75.0	70.0	70.0	75.0
Busia Town	-	-	-	-	-	-	81.7	78.8	75.0	70.0	71.3	72.5
Sio Port	-	-	-	-	-	-	80.0	77.5	77.5	70.0	70.0	76.3
Butere	-	-	33.0	41.7	34.3	39.1	30.7	28.0	25.7	25.2	26.0	26.7
Kakamega	-	-	39.5	42.3	41.9	36.9	33.5	26.4	29.3	29.6	30.7	31.0
Mumias	-	-	33.4	38.5	40.9	38.4	28.6	25.6	24.0	25.8	27.4	26.0
Mundeta	39.7	38.1	38.1	-	-	-	-	-	-	-	-	-
Cheptula	39.5	40.5	38.9	-	-	-	-	-	-	-	-	-
Mbale	37.6	37.3	38.1	-	-	-	-	-	-	-	-	-
Muthurwa	-	-	-	-	-	-	-	-	-	-	47.6	47.6
Gikomba	-	-	-	-	-	-	-	-	38.1	-	47.6	47.6
Korokocho	-	-	-	-	-	-	42.1	-	36.4	-	36.4	-
Kayole	-	-	-	-	-	-	44.4	-	40.0	38.1	40.0	38.1
Total	44.8	44.6	43.6	43.5	44.6	44.3	44.5	42.1	41.4	39.4	40.5	40.4

Table 9(b): Average Monthly Retail Prices for Dry Maize, 2021 (per Kg)

Market/month	January	February	March	April	May	June	July	August
Kiambu	-	40.0	40.0	42.5	51.3	50.0	50.0	-
Limuru	35.0	40.6	42.5	-	-	40.0	40.0	-
Thika	50.0	47.5	40.8	40.0	46.0	40.0	40.0	-
Githurai	41.0	42.5	42.0	42.5	41.0	47.5	51.0	-
Gatundu	43.0	46.3	46.0	46.3	45.0	47.5	50.0	-
Kutus	43.8	42.4	34.8	34.8	-	-	-	-
Kerugoya	43.5	-	-	-	-	-	-	-
Muthithi	34.8	34.9	-	-	-	-	30.6	-
Makuyu	32.0	34.3	50.0	-	37.2	50.8	36.9	-
Kiriaini	37.6	33.3	-	-	-	-	33.8	-
Engineer	48.3	50.0	48.3	50.0	55.0	50.0	50.0	50.0
OI Kalou	50.0	50.0	48.3	52.5	50.0	42.5	40.0	40.0
Ndaragwa	-	-	-	-	50.0	45.0	-	-
Nyeri	40.6	46.5	48.3	48.8	48.1	48.2	47.6	-
Karatina	45.7	48.2	40.9	34.2	38.1	41.5	40.9	-
Nanyuki	37.1	40.2	41.9	43.9	42.9	44.2	47.9	46.7
Nyahururu	39.6	38.8	37.2	42.3	44.9	45.2	44.7	45.0
Ukunda	47.5	-	50.0	47.5	44.0	47.5	45.0	-
Kwale	48.3	-	50.0	43.8	42.0	42.5	45.0	-
Voi	37.5	36.7	38.8	-	-	-	-	-
Mkunguni	44.4	43.8	45.0	45.0	45.0	47.5	50.0	-
Mwembe Tayari	50.0	55.0	55.0	55.0	56.0	55.0	60.0	-
Majengo	50.0	55.0	52.5	51.3	58.0	58.8	57.5	-
Kongowea	43.0	43.8	45.0	45.0	40.0	40.0	45.0	-
Hola	40.0	40.0	40.0	40.0	40.0	40.0	40.0	-
Kalundu	35.0	33.8	35.0	30.0	30.0	32.5	35.0	35.0
Machakos Town	40.0	40.0	40.0	40.0	40.0	40.0	40.0	-
Tala	36.4	35.0	35.0	35.0	35.0	35.0	35.0	-
Maua	37.0	35.0	35.0	-	35.0	35.0	35.0	35.0
Kianjai	38.4	36.4	33.3	33.3	33.3	33.3	38.9	38.9
Gakoromere	38.9	35.0	32.2	33.8	35.0	30.0	33.0	32.5
Chuka Town	48.6	45.5	43.3	-	-	-	-	-
Wote	35.0	34.5	32.8	34.3	32.9	35.0	35.0	35.0
Garissa Town	70.0	70.0	-	-	70.0	65.0	65.0	65.0
Marsabit Town	59.0	55.8	52.5	50.0	54.0	57.5	53.2	50.0
Isiolo Town	44.4	60.0	47.5	-	53.3	-	-	35.0
Daraja Mbili	31.9	29.0	29.7	-	32.0	31.3	33.9	34.3
Riochanda	31.0	28.3	-	-	-	-	-	-
Nyabite	31.0	32.6	32.6	32.8	31.8	34.0	31.6	30.1
Kibuye	33.9	31.5	34.8	34.8	34.8	36.4	35.2	34.8
Ahero	34.5	35.3	34.9	34.8	35.0	35.1	34.8	35.1
Kiboswa	34.8	33.7	32.6	32.6	33.0	33.7	34.8	34.8
Sondu	34.9	35.3	35.3	33.9	34.9	34.8	35.2	34.8
Siaya	40.2	36.9	33.3	-	30.3	35.9	-	-
Kegonga	18.2	22.8	24.2	27.5	26.0	26.0	19.2	21.6
Oyugis	25.0	23.0	-	27.0	26.0	27.6	29.2	-
Kehacha	19.5	25.9	25.2	28.0	27.3	28.0	21.0	23.9
Migori	23.1	26.2	27.5	28.1	28.4	29.3	25.4	25.3
Soko Mjinga	33.3	27.6	30.0	35.6	-	32.7	31.3	32.0
Lodwar	42.6	45.2	90.9	38.5	42.8	40.9	43.2	-
Kabarnet	30.0	30.0	30.0	33.8	32.5	35.0	35.0	-
Kimulot	33.6	32.4	32.3	36.5	37.1	37.5	37.5	-
Sotik	36.0	35.0	32.0	34.0	36.0	35.3	35.0	-
Bomet	32.4	36.1	37.5	37.5	37.1	34.4	-	-
Muthurwa Narok	29.6	31.5	-	-	-	-	-	-
Nakuru Town	52.5	45.0	45.0	45.0	-	62.5	52.5	48.3
Kapsabet	28.1	28.6	31.8	30.6	32.2	34.5	35.6	35.4
Chepsonoi	28.6	28.3	33.4	29.9	31.2	32.9	34.9	36.8
Engare	28.6	29.1	28.0	-	-	-	-	-
Kilgoris	32.2	29.8	25.0	-	-	-	-	-
Mulot	32.4	32.9	33.0	34.0	34.0	34.0	34.0	-
Kitale	33.8	31.3	44.5	44.3	31.0	31.7	28.8	26.8
Eldoret	30.0	35.0	35.0	35.0	39.0	40.0	-	-
Burn Forest	25.2	27.0	27.0	-	27.0	28.5	-	-
Turbo	30.0	30.0	33.1	35.0	34.5	35.0	-	-
Kipkaren	30.0	30.0	32.5	34.4	34.0	35.0	-	-
Iten	45.0	-	-	-	-	39.4	-	40.0
Kajiado	50.0	48.8	45.0	47.5	48.0	47.5	50.0	50.0
Bungoma Town	29.6	31.1	29.2	32.2	32.9	34.1	33.3	31.2
Bumala	71.0	67.0	68.3	65.0	68.8	71.3	84.0	83.3
Busia Town	68.0	61.0	68.3	70.0	67.5	71.3	81.0	80.0
Sio Port	71.0	64.0	65.0	65.0	66.3	72.5	78.0	80.0
Butere	28.3	27.8	-	29.8	36.3	33.2	35.2	36.9
Kakamega	29.5	29.2	29.9	32.3	35.4	36.0	34.5	35.2
Mumias	28.3	28.1	28.7	32.3	38.5	34.1	33.5	33.4
Muthurwa	47.6	-	-	-	-	-	-	-
Gikomba	47.6	46.5	-	-	-	-	-	-
Korokocho	-	-	38.9	-	-	-	-	-
Kayole	33.3	-	38.9	-	-	-	-	-
Total	38.1	38.4	38.7	38.4	38.8	40.4	40.7	39.2

Table 9(C): Average Monthly Retail Prices for Dry Beans, 2020 (per Kg)

Market Name	January	February	March	April	May	June	July	August	September	October	November	December
Kiambu	88.3	-	101.1	-	-	-	105.3	109.7	113.3	-	-	-
Limuru	91.6	97.0	94.3	-	-	-	-	-	70.8	95.0	95.0	-
Thika	85.2	88.3	94.3	-	-	-	101.7	98.3	103.3	99.0	94.2	90.0
Githurai	82.4	76.1	78.9	-	-	-	97.5	102.2	105.0	99.5	95.0	95.0
Gatundu	107.4	111.7	-	-	-	-	99.3	95.0	93.3	94.0	95.0	95.0
Kutus	72.2	75.0	-	-	-	-	-	-	81.8	90.4	91.3	87.0
Kerugoya	78.2	86.4	-	-	-	-	-	-	-	-	77.2	80.0
Muthithi	65.9	-	69.5	-	-	-	-	74.2	75.1	-	83.5	79.3
Makuyu	66.7	-	66.8	-	-	-	-	73.3	87.6	-	92.0	87.9
Kiriani	67.2	-	68.4	-	-	-	-	78.5	81.8	93.5	-	79.0
Oi Kalou	61.9	59.5	60.0	60.0	60.0	74.4	61.0	55.0	51.7	53.3	80.0	103.3
Ndaragwa	50.0	58.8	95.7	95.0	101.8	84.6	68.2	-	-	-	120.0	111.0
Nyeri	101.7	108.1	89.3	-	-	-	-	-	105.2	113.0	105.3	96.2
Karatina	98.5	105.3	102.9	-	-	-	-	-	108.3	120.6	128.0	124.4
Nanyuki	124.0	113.7	111.1	-	-	-	-	-	-	-	-	-
Nyahururu	107.7	111.1	109.9	-	-	-	-	-	-	-	-	-
Ukunda	105.0	100.0	100.0	80.0	66.0	85.0	80.0	62.5	82.5	77.0	72.5	78.8
Kwale	100.0	100.0	100.0	80.0	64.0	90.0	80.0	60.0	77.5	80.0	80.0	82.5
Voi	-	-	-	-	-	-	-	-	-	-	108.8	110.0
Mpeketoni	100.0	-	-	-	-	-	-	-	-	-	-	-
Mkunguni	114.5	110.0	110.0	-	-	-	120.0	120.0	-	115.0	112.5	111.3
Mwembe Tayari	144.0	147.5	162.5	150.0	158.0	132.5	136.0	135.0	125.0	126.0	127.5	130.0
Majengo	119.0	120.0	108.0	100.0	100.0	100.0	100.0	100.0	103.3	98.0	106.7	115.0
Mackinon	120.0	120.0	120.0	120.0	120.0	-	120.0	120.0	120.0	120.0	120.0	120.0
Sega	111.7	117.5	120.0	102.5	116.0	115.0	112.0	112.5	107.5	110.0	115.0	128.0
Kongowea	99.0	91.3	78.8	105.0	110.0	102.5	100.0	87.5	85.0	90.0	100.0	97.5
Hola	-	-	-	-	-	-	-	-	-	120.0	120.0	-
Garsen	-	-	-	-	-	-	-	-	100.0	100.0	100.0	100.0
Runyenjes	75.3	98.3	116.3	-	107.0	97.6	-	-	-	-	-	-
Embu Town	130.6	114.6	95.2	-	100.1	95.2	-	-	-	-	-	-
Iciara	128.4	140.7	146.4	-	111.2	102.9	-	-	-	-	-	-
Kiritiri	103.4	114.0	119.0	-	101.8	95.6	-	-	-	-	-	-
Siakago	87.6	95.3	93.1	-	-	-	-	-	-	-	-	-
Kalundu	-	105.0	105.0	106.3	114.0	113.8	108.0	100.0	103.8	90.5	105.0	-
Machakos Town	100.0	100.0	85.0	88.0	100.0	-	120.0	111.7	112.9	116.0	120.0	-
Tala	82.0	70.0	-	70.0	70.0	-	100.0	90.0	100.0	115.0	-	-
Maua	90.0	-	-	-	-	-	-	-	-	-	80.0	80.0
Kianjai	79.2	72.2	72.2	-	-	-	-	-	77.8	-	88.9	84.7
Gakromere	75.0	80.0	80.0	-	-	-	-	-	80.0	90.0	90.0	90.0
Wote	113.3	-	87.5	-	-	100.0	100.0	100.0	100.0	100.0	100.0	100.0
Garissa Town	102.7	103.3	103.3	113.3	125.3	126.7	125.7	126.7	126.7	124.0	113.3	111.7
Wajir Town	120.0	-	120.0	-	-	-	-	120.0	120.0	120.0	120.0	120.0
Isiolo Town	85.0	80.0	80.0	-	-	-	-	-	-	-	95.0	85.0
Daraja Mbili	94.0	-	115.2	110.9	120.5	-	-	-	-	-	-	-
Kibirigo	89.7	-	-	-	-	-	-	-	-	-	-	-
Keroka	83.3	-	-	-	-	-	-	-	-	-	-	-
Riochanda	75.0	-	-	-	-	-	-	-	-	90.9	87.5	-
Nyabite	-	-	-	-	-	-	-	-	-	138.7	-	-
Kibuye	75.7	75.4	77.9	80.6	83.3	74.9	90.0	79.2	101.4	100.0	107.8	109.0
Ahero	75.5	78.3	79.9	82.6	86.6	86.1	93.0	82.0	103.3	103.5	108.6	108.8
Kiboswa	75.1	63.9	74.5	77.4	77.1	80.9	77.5	78.6	96.5	97.9	105.7	108.3
Sondu	77.0	78.3	79.3	79.2	82.4	84.8	95.7	82.6	104.3	104.3	105.3	104.5
Kegonga	91.0	84.0	-	-	-	-	-	-	-	-	-	84.2
Oyugis	-	-	106.2	139.1	114.4	110.0	92.5	76.0	76.0	82.0	78.0	99.6
Kehacha	83.5	88.0	-	-	-	-	-	-	-	-	86.4	88.0
Migori	109.8	110.5	-	-	-	-	-	-	-	115.5	120.3	105.4
Soko Mjinga	96.1	-	98.1	108.5	-	-	-	-	-	-	-	90.3
Lodwar	98.4	-	-	-	-	-	-	-	-	-	83.3	91.7
Kabarnet	91.7	-	-	-	-	-	120.0	105.0	115.0	119.0	110.0	100.0
Kimulot	79.0	76.0	-	-	-	-	-	-	-	83.5	85.5	84.0
Sotik	78.9	76.3	-	-	-	-	-	-	-	96.2	90.9	93.7
Bomet	83.3	83.3	-	-	-	-	-	-	-	73.1	108.7	111.5
Nakuru Town	60.0	60.0	60.0	-	-	-	-	67.1	60.0	60.0	64.4	60.0
Kapsabet	98.7	94.8	111.2	-	-	-	-	112.7	113.7	116.4	111.1	-
Chepsonoi	98.8	97.7	83.3	-	-	-	-	113.3	115.9	116.0	114.9	-
Mulot	76.3	76.9	-	-	-	-	-	-	-	78.1	75.0	73.1
Kitale	70.6	72.1	72.6	88.9	82.3	103.6	95.6	95.8	103.7	103.6	81.7	90.3
Endebess	50.9	59.9	63.9	64.2	66.7	-	-	-	-	-	-	-
Sibanga	62.5	63.7	67.8	77.7	68.8	-	-	-	-	-	-	-
Eldoret	-	122.5	125.0	125.0	133.0	133.8	138.0	128.8	108.8	132.5	132.5	132.5
Burn Forest	130.3	136.4	131.8	143.2	140.9	131.8	140.9	136.4	134.1	132.7	138.6	129.5
Turbo	-	110.0	111.3	125.0	144.0	142.5	140.0	128.8	106.3	134.0	135.0	133.8
Kipkaren	-	116.3	125.0	126.3	145.0	140.0	140.0	128.0	107.5	131.0	140.0	137.5
Iten	100.0	-	-	-	-	-	-	100.0	-	-	-	-
Kajiado	94.7	106.7	113.3	113.3	113.3	113.3	117.3	116.7	115.0	112.0	114.2	114.2
Bungoma Town	-	-	-	-	-	117.7	97.2	99.7	103.0	91.6	91.6	91.9
Bumala	-	-	-	-	-	-	-	-	-	-	-	135.0
Busia Town	-	-	-	-	-	-	-	-	-	-	-	125.0
Sio Port	-	-	-	-	-	-	-	-	-	-	-	132.5
Butere	-	-	119.3	123.8	107.8	108.3	122.2	126.7	81.9	102.2	100.6	96.7
Kakamega	-	-	162.0	175.9	150.3	136.1	114.9	97.3	91.2	90.4	85.8	86.5
Mumias	-	-	127.9	147.1	119.7	110.0	108.9	116.9	104.9	102.3	106.1	104.4
Mundeta	90.9	92.0	90.9	-	-	-	-	-	-	-	-	-
Cheptula	90.9	97.0	95.5	-	-	-	-	-	-	-	-	-
Mbale	100.0	106.1	98.5	-	-	-	-	-	-	-	-	-
Muthurwa	-	-	-	-	-	-	-	-	-	-	104.3	104.3
Gikomba	-	-	-	-	-	-	-	-	72.7	-	104.3	104.3
Korokocho	-	-	-	-	-	-	80.0	-	66.7	-	75.0	-
Kayole	-	-	-	-	-	-	80.0	-	80.0	80.0	80.0	72.7
Total	89.1	91.8	96.2	104.6	104.7	103.3	99.2	95.8	96.6	99.4	99.9	100.6

Table 9(d): Average Monthly Retail Prices for Dry Beans, 2021 (per Kg)

Market/Month	January	February	March	April	May	June	July	August
Kiambu	-	107.8	106.7	107.5	100.0	100.8	111.7	-
Limuru	102.0	96.3	97.5	-	-	105.0	105.0	-
Thika	107.7	96.7	96.9	96.7	101.0	96.7	97.3	-
Githurai	103.0	90.6	100.0	101.3	98.0	99.0	103.3	-
Gatundu	93.3	92.5	93.3	94.2	93.3	93.3	93.3	-
Kutus	77.4	75.8	77.1	83.3	-	-	-	-
Kerugoya	87.0	-	-	-	-	-	-	-
Muthithi	89.7	82.2	-	-	-	-	77.7	-
Makuyu	84.2	81.7	42.9	-	94.6	59.6	86.4	-
Kiriaini	91.2	91.3	-	-	-	-	86.5	-
Engineer	108.0	115.0	108.9	108.3	115.6	100.0	100.0	100.0
OI Kalou	113.3	101.7	102.2	110.0	111.7	117.5	110.0	106.7
Ndaragwa	-	-	-	-	100.0	120.0	-	-
Nyeri	101.4	108.2	112.0	108.8	104.2	112.4	113.8	-
Karatina	125.4	119.2	108.3	100.4	104.0	107.3	109.6	-
Nanyuki	103.6	116.5	119.4	117.1	111.1	108.6	108.6	119.8
Nyahururu	110.6	108.0	106.1	113.5	123.5	132.1	127.7	112.3
Ukunda	100.0	-	100.0	85.0	80.0	78.8	80.0	-
Kwale	107.5	-	100.0	85.0	80.0	80.0	80.0	-
Voi	110.0	110.0	110.0	-	-	-	-	-
Mkunguni	111.3	110.0	108.8	110.0	110.0	107.5	110.0	-
Mwembe Tayari	122.0	120.0	120.0	120.0	128.0	130.0	130.0	-
Majengo	124.0	105.0	110.0	130.0	108.0	115.0	120.0	-
Mackinon	120.0	105.0	100.0	110.0	112.0	120.0	120.0	-
Sega	126.0	110.0	120.0	127.5	118.0	120.0	120.0	-
Kongowea	94.0	97.5	100.0	100.0	108.0	110.0	110.0	-
Hola	120.0	120.0	120.0	120.0	120.0	120.0	120.0	-
Garsen	100.0	100.0	100.0	100.0	100.0	100.0	-	-
Kalundu	108.3	110.8	112.0	110.0	110.0	90.0	90.0	101.3
Machakos Town	106.7	110.0	100.0	100.0	110.0	110.0	110.0	-
Tala	110.0	100.0	100.0	100.0	100.0	100.0	100.0	-
Maua	80.0	80.0	80.0	-	90.0	90.0	88.0	80.0
Kianjai	80.0	81.9	92.6	100.0	100.0	100.0	88.9	88.9
Gakomere	90.0	90.0	92.5	92.5	96.0	85.0	84.0	90.0
Chuka Town	-	111.1	158.3	-	-	-	-	-
Wote	100.0	100.0	100.0	100.0	98.0	110.0	100.0	92.5
Garissa Town	106.7	106.7	-	-	106.7	106.7	106.7	106.7
Marsabit Town	106.0	103.3	115.0	112.5	110.0	120.0	120.0	115.0
Isiolo Town	91.1	100.0	93.8	-	66.7	-	-	95.0
Daraja Mbili	104.5	103.7	107.2	-	100.0	103.3	93.8	90.9
Riochanda	88.4	100.0	-	-	-	-	-	-
Nyabite	102.2	115.2	120.0	133.7	114.3	105.8	94.2	102.9
Kibuye	111.3	114.6	110.9	109.4	110.0	112.0	109.2	111.5
Ahero	108.6	116.4	108.2	106.9	110.8	109.2	109.6	111.0
Kiboswa	108.3	114.2	105.3	104.2	105.9	109.7	109.6	109.4
Sondu	105.0	114.3	104.0	105.1	107.2	110.7	109.0	110.4
Siaya	78.3	98.2	96.3	-	89.6	86.5	-	-
Kegonga	95.2	105.3	106.8	106.2	105.0	94.6	82.3	87.3
Oyugis	109.0	100.1	-	110.0	108.1	105.3	107.7	-
Kehacha	93.0	104.4	107.6	108.6	111.0	97.2	86.1	85.7
Migori	124.9	104.0	120.5	117.6	111.4	107.2	99.1	97.8
Soko Mjinga	91.5	84.1	95.8	92.6	-	107.0	108.3	108.1
Lodwar	96.6	100.0	125.0	83.3	83.6	87.5	101.8	-
Kabarnet	109.4	113.3	100.0	115.0	120.0	101.4	100.0	-
Kimulot	96.0	87.4	87.7	93.9	88.0	73.6	73.6	-
Sotik	95.1	94.7	96.9	85.4	90.2	88.3	82.0	-
Bomet	86.2	88.9	108.2	93.7	92.8	101.2	-	-
Muthurwa Narok	112.0	98.7	-	-	-	-	-	-
Nakuru Town	60.0	60.0	60.0	60.0	-	60.0	70.0	103.3
Kapsabet	114.4	119.0	120.2	115.1	114.5	105.9	103.2	100.8
Chepsonoi	117.0	121.8	114.9	110.5	106.1	106.2	107.9	111.2
Engare	75.5	85.0	95.8	-	-	-	-	-
Kilgoris	58.7	60.0	60.0	-	-	-	-	-
Mulot	74.6	81.0	78.4	70.2	73.9	70.5	74.4	-
Kitale	104.3	115.6	107.0	93.9	106.7	93.2	99.3	73.8
Eldoret	138.0	138.8	135.0	138.8	139.0	140.0	-	-
Burn Forest	132.7	134.1	134.1	-	134.1	136.4	-	-
Turbo	135.0	133.8	132.5	127.5	135.0	137.5	-	-
Kipkaren	138.0	135.0	132.5	138.8	135.0	136.3	-	-
Iten	90.0	-	-	-	-	118.8	-	110.0
Kajiado	104.8	109.2	110.0	106.7	110.7	113.3	115.0	116.7
Bungoma Town	101.8	91.5	92.0	92.9	88.7	83.4	77.8	82.2
Bumala	140.0	124.0	131.7	140.0	137.5	127.5	120.0	120.0
Busia Town	132.0	142.0	131.7	125.0	127.5	142.5	120.0	120.0
Sio Port	130.0	134.0	130.0	130.0	125.0	122.5	98.0	100.0
Butere	102.8	109.9	-	122.9	128.1	110.4	110.7	110.0
Kakamega	95.3	103.6	121.4	125.8	129.1	132.7	108.4	108.2
Mumias	116.9	112.5	114.4	132.0	137.3	116.7	118.5	110.3
Muthurwa	104.3	-	-	-	-	-	-	-
Gikomba	104.3	104.3	-	-	-	-	-	-
Korokocho	-	-	70.0	-	-	-	-	-
Kayole	72.7	-	66.7	-	-	-	-	-
Total	101.4	101.5	103.1	103.1	103.4	101.1	101.1	103.2

Table 10: Exports of Coffee and Tea

Month	COFFEE *		TEA	
	Quantity (MT)	Value '(KSh. Million)	Quantity (MT)	Value '(KSh. Million)
2020				
January.....	2,639.38	985.32	48,770.49	11,452.01
February.....	3,168.50	1,686.82	47,569.72	11,021.86
March.....	4,604.42	2,410.16	51,440.71	11,665.48
April.....	4,395.52	2,590.20	57,722.34	13,192.62
May	4,312.75	2,279.12	48,594.07	11,289.33
June.....	5,414.08	2,956.33	46,399.01	10,293.00
July	3,546.25	1,799.26	46,850.57	10,013.82
August.....	3,181.82	1,484.15	47,034.93	10,269.11
September.....	3,391.49	1,606.84	44,724.70	10,199.89
October.....	2,732.15	1,322.08	43,655.91	9,937.34
November.....	3,594.29	1,836.61	46,352.88	10,610.96
December.....	2,405.44	1,284.84	46,166.69	10,300.58
2021				
January.....	2,129.36	1,342.45	48,811.79	11,378.64
February.....	3,481.13	2,161.12	50,389.92	11,725.86
March.....	6,065.07	4,556.94	53,432.10	12,672.90
April.....	3,337.01	2,307.12	51,899.23	11,575.75
May.....	4,430.33	3,010.49	50,041.59	11,070.79
June.....	3,436.88	2,271.77	43,993.25	9,547.74
July.....	2,696.29	1,763.90	43,844.48	9,203.50
August.....	2,504.38	1,657.82	44,421.07	9,874.40

Source: KRA Customs and Border Control Services department

* Coffee, not Roasted

MT denotes Metric tonnes

Table 11: Monthly Exports of Fresh Horticultural Produce

Months	Cut Flowers				FRUITS				VEGETABLES			
	2020		2021*		2020*		2021*		2020		2021*	
	Quantity (MT)	Value (KSh Million)	Quantity (MT)	Value (KSh Million)	Quantity (MT)	Value (KSh Million)	Quantity (MT)	Value (KSh Million)	Quantity (MT)	Value (KSh Million)	Quantity (MT)	Value (KSh Million)
January	14,649.06	12,607.09	15,169.04	10,767.58	6,340.04	1,076.00	7,071.82	1,038.19	4,834.01	2,355.84	6,066.26	3,430.90
February	17,562.69	11,907.04	17,411.90	11,947.44	8,370.27	1,044.26	11,738.47	1,697.31	4,809.20	1,983.40	5,363.26	2,222.24
March	10,438.01	13,986.50	17,589.01	9,420.27	11,433.30	1,683.33	19,399.89	2,893.90	5,585.21	2,338.23	7,053.12	2,697.68
April	7,989.61	8,608.43	16,473.23	8,525.04	11,671.61	1,640.06	19,046.36	2,719.63	4,839.67	1,664.25	6,177.43	2,253.52
May	10,215.07	6,254.05	13,545.31	7,066.07	13,492.51	5,642.88	13,433.19	1,927.87	4,281.66	2,176.03	6,694.81	2,472.27
June	9,373.96	5,355.97	12,786.28	5,475.70	10,367.69	1,431.74	11,415.49	1,804.96	4,678.09	1,741.78	8,942.62	2,447.22
July	10,928.56	7,154.46	9,687.18	4,603.25	9,990.93	1,424.36	5,116.90	919.67	4,547.00	1,819.98	3,522.29	1,297.88
August	11,497.87	7,973.91	19,842.63	9,810.21	8,874.50	1,286.90	8,742.79	1,614.25	4,561.09	1,708.51	7,206.65	2,664.92
Sept	12,877.96	10,508.40			6,250.47	990.26			5,405.00	1,910.75		
October	14,480.22	7,473.06			7,073.45	889.94			6,274.31	2,169.66		
Nov	12,960.27	7,216.09			5,607.97	646.27			5,551.46	1,929.80		
Dec	13,060.27	8,463.58			5,586.80	670.96			7,208.70	2,430.21		
Total	146,033.55	107,508.57	122,504.57	67,615.57	105,059.55	18,426.94	95,964.90	14,615.79	62,575.41	24,228.43	51,026.43	19,486.63

Source: Horticultural Directorate

* Provisional

Table 12: External Trade

	KSh Million					
Month	Domestic Exports	Re-Exports	Total Exports	Total Imports	Volume of Trade	Home use Imports
2020						
January.....	47,324.80	5,801.50	53,126.30	155,432.97	208,559.27	145,663.40
February.....	47,900.33	13,205.92	61,106.25	133,824.66	194,930.91	126,980.05
March.....	49,652.97	14,830.75	64,483.72	137,240.93	201,724.65	104,004.63
April.....	40,675.66	2,537.29	43,212.94	119,758.20	162,971.15	100,367.05
May.....	41,800.44	5,398.51	47,198.95	108,699.14	155,898.09	104,957.03
June.....	44,520.97	3,528.33	48,049.30	121,602.01	169,651.31	119,885.40
July.....	45,695.71	6,304.59	52,000.30	138,761.11	190,761.41	136,026.07
August.....	49,502.50	4,660.60	54,163.10	137,775.57	191,938.67	137,350.10
September.....	48,536.58	7,870.26	56,406.84	143,391.27	199,798.11	140,485.82
October.....	49,319.22	3,842.81	53,162.02	145,238.48	198,400.51	140,564.71
November.....	47,390.54	3,398.24	50,788.79	139,042.14	189,830.93	132,791.54
December.....	52,299.28	5,209.71	57,508.99	161,455.69	218,964.68	157,227.72
2021*						
January.....	49,570.48	4,743.15	54,313.63	160,723.93	215,037.56	152,098.04
February.....	58,701.48	8,790.05	67,491.53	159,547.18	227,038.71	153,277.19
March.....	60,215.79	8,029.39	68,245.19	187,095.06	255,340.25	183,373.06
April.....	53,375.93	5,485.80	58,861.73	161,847.41	220,709.13	154,720.58
May.....	56,910.62	6,226.85	63,137.47	162,198.06	225,335.53	155,023.58
June.....	52,304.35	4,439.83	56,744.17	160,159.92	216,904.09	155,621.22
July.....	54,893.95	4,517.02	59,410.97	177,168.59	236,579.56	164,803.20
August.....	55,275.67	6,066.94	61,342.61	172,950.46	234,293.07	167,065.44

Source: Kenya Revenue Authority

*Provisional

Table 13(a): Major Destinations of Domestic Exports

KSh Million											
Month/Country	Uganda	Tanzania	United Kingdom	Pakistan	Netherlands	Egypt	Germany	Rwanda	USA	United Arab Emirates	France
2020											
January.....	3,709.11	2,369.38	4,050.58	4,193.52	3,855.89	2,152.66	919.27	1,534.50	4,664.67	2,112.66	486.10
February.....	5,275.30	2,105.73	4,914.40	4,586.76	4,633.00	1,658.73	1,251.99	1,851.74	3,467.86	2,059.26	450.65
March.....	5,332.22	2,894.28	4,266.20	4,654.94	4,003.95	1,597.23	1,276.14	2,269.51	3,693.21	1,648.62	602.84
April.....	2,290.71	1,981.76	4,413.58	5,558.22	2,784.69	1,367.24	1,427.26	866.42	2,949.42	1,871.26	840.73
May.....	3,613.15	1,837.64	3,848.13	5,137.95	3,372.75	1,412.17	1,293.18	1,280.15	2,866.05	1,415.22	722.16
June.....	4,349.66	1,899.77	3,820.66	4,221.27	2,609.82	1,604.56	989.03	1,936.60	5,091.41	1,214.39	819.70
July.....	5,663.36	2,598.34	4,040.28	4,099.59	3,070.10	1,290.26	1,031.01	2,370.08	3,588.08	1,367.54	912.55
August.....	6,399.79	2,572.96	3,821.02	5,136.91	3,401.57	658.66	1,231.58	2,524.04	5,346.14	1,339.46	963.24
September.....	6,386.83	2,681.66	4,126.01	3,970.74	3,295.61	1,696.98	1,251.17	2,168.05	3,775.68	1,653.71	916.74
October.....	5,322.72	2,640.28	3,917.36	4,003.78	5,230.07	1,764.74	1,040.20	2,329.39	4,578.11	1,686.60	581.82
November.....	4,421.78	2,777.85	3,899.39	4,838.67	3,751.75	1,477.93	1,003.65	2,305.75	4,518.63	1,458.23	677.08
December.....	6,437.79	3,110.31	4,391.66	4,063.96	4,558.36	2,052.45	1,059.75	2,255.96	3,665.78	1,356.79	717.01
2021*											
January.....	4,057.47	2,274.20	4,584.99	4,550.15	5,444.13	1,604.35	1,250.79	1,465.90	4,985.78	2,216.37	727.29
February.....	6,870.27	2,431.41	5,033.00	4,598.23	5,850.86	2,353.14	1,880.30	1,722.03	3,849.57	2,593.93	819.88
March.....	5,686.64	2,612.97	5,097.76	4,722.82	5,535.02	2,460.03	2,303.29	1,847.51	4,563.14	2,090.72	1,127.14
April.....	6,554.92	2,758.96	3,077.24	3,585.95	4,505.80	1,672.16	795.07	1,958.34	3,480.22	1,422.81	647.37
May.....	6,035.04	2,367.05	4,224.31	4,391.38	5,389.51	1,825.95	922.85	2,076.59	4,487.26	1,512.78	901.54
June.....	7,066.70	2,846.37	4,298.39	3,791.40	4,364.61	1,214.03	874.15	2,334.52	5,226.85	1,529.66	1,057.13
July.....	6,308.38	3,752.88	3,872.87	4,033.58	4,049.64	1,109.89	913.20	2,515.98	6,989.67	1,643.04	807.14
August.....	6,986.13	3,104.14	3,402.84	4,092.64	3,830.14	1,791.96	1,111.15	2,543.91	4,801.14	1,935.71	953.08

Source: Kenya Revenue Authority

*Provisional

Table 13(b): Domestic Exports by Broad Economic Category

Value in KSh Million													
Descriptions	2020					2021*							
	Aug	Sep	Oct	Nov	Dec	Jan	Feb	Mar	April	May	Jun	Jul	Aug
Food and beverages.....	21,397.98	21,056.62	21,587.21	21,659.27	22,473.85	23,048.97	25,315.89	29,492.86	24,978.51	24,528.44	22,142.92	21,735.31	23,157.09
Industrial supplies (Non-Food)	13,177.60	11,843.88	11,662.55	10,792.35	12,492.37	11,981.10	14,279.80	12,859.01	11,522.40	15,240.90	13,493.91	14,891.13	15,833.11
Fuel and Lubricants.....	661.85	507.02	796.17	268.54	520.79	127.19	518.53	459.69	554.90	244.38	531.88	646.07	636.56
Machinery & other capital Equipment.....	770.22	1,288.08	809.33	599.61	756.87	609.99	1,071.58	1,044.80	884.38	1,070.48	819.75	1,598.11	785.38
Transport equipment.....	347.32	498.90	401.72	526.54	490.81	388.65	612.19	746.89	682.00	282.47	749.79	537.20	476.13
Consumer goods Not elsewhere specified..	13,136.52	13,342.08	14,062.24	13,539.23	15,564.59	13,414.58	16,903.45	15,612.55	14,753.74	15,541.06	14,566.10	15,481.52	14,386.79
Goods not elsewhere specified.....	11.01	0.00	0.00	5.00	0.00	0.00	0.04	0.00	0.00	0.38	0.00	4.61	0.61
Total	49,502.50	48,536.58	49,319.22	47,390.54	52,299.28	49,570.48	58,701.48	60,215.79	53,375.93	56,908.12	52,304.35	54,893.95	55,275.67
Percentage Shares:.....													
Food and Beverages	43.23	43.38	43.77	45.70	42.97	46.50	43.13	48.98	46.80	43.10	42.33	39.60	41.89
Industrial Supplies (Non-Food).....	26.62	24.40	23.65	22.77	23.89	24.17	24.33	21.35	21.59	26.78	25.80	27.13	28.64
Fuel and Lubricants	1.34	1.04	1.61	0.57	1.00	0.26	0.88	0.76	1.04	0.43	1.02	1.18	1.15
Machinery and other Capital Equipment....	1.56	2.65	1.64	1.27	1.45	1.23	1.83	1.74	1.66	1.88	1.57	2.91	1.42
Transport Equipment.....	0.70	1.03	0.81	1.11	0.94	0.78	1.04	1.24	1.28	0.50	1.43	0.98	0.86
Consumer Goods not elsewhere specified.	26.54	27.49	28.51	28.57	29.76	27.06	28.80	25.93	27.64	27.31	27.85	28.20	26.03
Goods not elsewhere specified	0.02	0.00	0.00	0.01	0.00	0.00	0.00	0.00	0.00	0.00	0.00	0.01	0.00
TOTAL	100.00	100.00	100.00	100.00	100.00	100.00	100.00	100.00	100.00	100.00	100.00	100.00	100.00

Source: Kenya Revenue Authority (KRA)

*Provisional

Table 14 (a) Major Origins of Imports

Value (KSh Million)											
Month	United Arab Emirates	United Kingdom	South Africa	Saudi Arabia	Japan	India	USA	Germany	Netherlands	France	China
2020											
January.....	12,572.62	2,682.95	4,993.13	8,800.71	8,162.25	15,598.11	4,372.14	3,897.08	3,998.16	2,325.68	35,061.82
February.....	3,544.80	1,913.50	3,897.21	6,308.86	6,504.63	20,996.77	4,233.87	2,309.68	2,185.89	2,038.83	29,655.18
March.....	11,532.87	2,733.59	5,463.75	9,057.94	8,033.19	21,326.57	4,391.02	3,236.37	1,180.49	1,436.49	16,176.04
April.....	6,540.07	1,865.45	3,122.26	6,198.79	7,571.35	11,662.36	6,402.99	3,318.80	2,069.28	1,487.01	21,042.12
May.....	3,442.31	2,656.30	3,478.28	2,248.85	5,345.12	11,374.96	5,469.71	3,368.18	1,697.75	1,611.51	24,486.22
June.....	4,534.82	2,049.80	3,629.53	1,729.20	5,984.93	14,207.47	4,555.54	3,798.11	1,654.15	2,517.45	31,449.14
July.....	5,965.11	2,062.32	4,538.60	5,132.23	7,391.56	15,773.28	4,941.26	3,170.17	4,654.93	2,273.96	34,185.43
August.....	3,560.81	2,881.30	2,965.31	6,228.75	7,212.17	15,626.79	4,580.86	7,296.31	8,096.97	2,070.02	35,525.36
September.....	10,028.50	2,538.21	4,188.07	11,713.45	7,563.57	14,556.61	4,439.31	2,209.51	988.10	1,377.52	34,942.30
October.....	13,898.24	2,605.64	3,078.13	3,957.92	7,297.80	15,641.22	4,378.26	2,258.66	2,296.08	2,167.73	30,559.41
November.....	7,489.45	2,241.52	3,478.51	6,157.19	6,901.63	16,498.13	4,195.25	2,180.56	5,924.52	2,264.78	29,314.03
December.....	9,574.30	3,063.66	2,986.06	3,927.72	9,727.71	15,383.16	4,366.08	3,189.22	7,150.66	1,722.23	39,082.03
2021*											
January.....	15,030.59	2,319.46	3,817.06	10,091.06	6,676.66	13,321.57	5,490.58	3,219.51	870.96	1,815.79	39,908.40
February.....	8,299.60	3,165.87	2,351.63	7,733.54	6,438.55	17,487.54	5,463.17	2,969.54	4,227.29	1,981.49	30,192.24
March.....	14,763.76	3,484.21	4,652.60	8,437.10	9,336.63	19,380.77	9,282.15	5,617.20	5,494.45	2,420.50	36,947.80
April.....	11,952.69	2,405.78	2,951.96	11,415.19	8,805.94	21,504.08	4,101.05	2,824.74	4,576.33	1,498.19	33,251.25
May.....	17,776.19	2,885.77	3,542.97	4,563.09	7,345.80	16,830.99	5,834.16	2,925.18	6,421.75	2,042.91	33,881.43
June.....	8,881.49	2,804.02	5,006.60	2,249.96	7,447.67	21,458.08	6,007.00	3,500.92	4,407.30	1,587.83	34,723.81
July.....	11,581.72	2,361.82	2,576.07	9,102.82	9,491.93	20,281.95	6,081.01	2,906.08	5,064.51	1,225.94	38,368.79
August.....	19,660.43	2,734.48	3,854.43	10,622.50	9,028.14	15,499.26	6,902.45	3,415.09	3,015.19	2,493.33	34,428.59

Source: Kenya Revenue Authority

*Provisional

Table 14(b): Imports by Broad Economic Category

Descriptions	Value in KSh Million												
	2020					2021*							
	Aug	Sep	Oct	Nov	Dec	Jan	Feb	Mar	Apr	May	June	July	Aug
Food and beverages.....	9,912.23	12,775.82	14,821.83	13,437.20	17,161.57	15,177.42	19,786.16	19,349.26	18,392.11	13,935.18	16,704.57	15,316.95	16,180.56
Industrial supplies (Non-Food)	45,582.40	60,055.92	61,110.60	57,002.99	61,773.95	65,149.41	65,424.95	71,783.99	63,733.46	68,280.85	62,443.43	70,494.75	68,984.29
Fuel and Lubricants.....	20,089.22	17,037.55	17,914.95	20,682.75	20,291.64	24,614.82	24,697.73	27,482.20	27,083.41	29,376.07	25,819.15	31,900.43	32,669.14
Machinery & other capital Equipment.....	25,786.87	21,593.62	24,124.03	21,863.38	28,750.18	26,890.73	21,715.53	25,386.58	22,753.02	21,892.19	22,835.78	28,386.26	25,619.49
Transport equipment.....	19,000.95	17,075.79	14,550.08	13,719.69	18,581.44	14,366.98	15,237.97	21,238.93	15,543.92	14,517.10	16,225.35	15,596.13	14,514.69
Consumer goods Not elsewhere specified..	17,318.43	14,658.62	11,430.04	12,335.79	14,555.54	13,007.90	12,574.38	21,391.52	13,987.90	14,025.15	15,887.77	15,408.43	14,781.02
Goods not elsewhere specified.....	85.46	193.94	1,286.96	0.35	341.36	1,516.27	110.47	462.56	353.58	171.54	243.89	65.63	201.26
Total	137,775.57	143,391.27	145,238.48	139,042.14	161,455.69	160,723.53	159,547.18	187,095.06	161,847.41	162,198.06	160,159.92	177,168.59	172,950.46
Percentage Shares:.....													
Food and Beverages	7.19	8.91	10.21	9.66	10.63	9.44	12.40	10.34	11.36	8.59	10.43	8.65	9.36
Industrial Supplies (Non-Food).....	33.08	41.88	42.08	41.00	38.26	40.54	41.01	38.37	39.38	42.10	38.99	39.79	39.89
Fuel and Lubricants	14.58	11.88	12.33	14.88	12.57	15.32	15.48	14.69	16.73	18.11	16.12	18.01	18.89
Machinery and other Capital Equipment....	18.72	15.06	16.61	15.72	17.81	16.73	13.61	13.57	14.06	13.50	14.26	16.02	14.81
Transport Equipment.....	13.79	11.91	10.02	9.87	11.51	8.94	9.55	11.35	9.60	8.95	10.13	8.80	8.39
Consumer Goods not elsewhere specified.	12.57	10.22	7.87	8.87	9.02	8.09	7.88	11.43	8.64	8.65	9.92	8.70	8.55
Goods not elsewhere specified.....	0.06	0.14	0.89	0.00	0.21	0.94	0.07	0.25	0.22	0.11	0.15	0.04	0.12
TOTAL	100	100	100	100	100	100	100	100	100	100	100	100	100

Source: Kenya Revenue Authority

*Provisional

Table 14 (c): Mobile Money Transactions

As at the end of month	Mobile money Agents	Mobile money subscriptions (millions)	Number of Transactions (millions)*	Value (KSh billions)
2020				
January	231,292	59.17	150.20	371.90
February	235,543	58.67	148.53	350.48
March	240,261	58.71	150.69	364.51
April	242,275	59.43	124.99	307.99
May	243,115	60.24	135.92	357.37
June	237,637	61.73	143.14	392.17
July	234,747	62.07	157.76	450.98
August	252,703	62.78	163.21	473.52
September	263,200	64.03	163.34	483.21
October	273,531	65.26	174.11	528.90
November	275,960	65.77	170.03	526.81
December	282,929	66.01	181.37	605.69
2021				
January	287,410	66.59	173.91	590.36
February	294,111	67.16	164.20	567.99
March	293,403	65.93	182.29	537.75
April	294,706	67.11	173.35	502.22
May	298,883	67.77	180.76	536.69
June	301,457	67.78	175.83	532.63
July	303,718	68.54	184.00	587.98
August	304,822	68.09	184.51	586.52

Source: Central Bank of Kenya

* Total agent cash in cash out

Table 14(d): International trade in ICT

KSh Million

	2020					2021							
	Aug	Sep	Oct	Nov	Dec	Jan	Feb	Mar	Apr	May	Jun	Jul	Aug
Imports													
Office machines 1.....	72.11	125.18	64.95	44.29	49.29	53.59	75.66	95.86	107.74	56.92	221.86	64.55	166.32
Automatic data processing machines, storage units etc.....	1,445.80	873.65	1,024.34	1,084.21	1,103.44	1,066.69	800.61	1,079.89	727.78	1,260.01	938.90	912.33	1,024.90
Part and accessories 2.....	167.69	51.51	52.39	36.95	80.43	50.60	69.89	103.74	45.94	134.02	58.13	40.81	67.18
Monitors and projectors and reception apparatus for television3.....	999.30	1,190.65	964.97	1,068.24	889.20	996.95	806.37	860.25	687.21	596.30	632.27	741.37	709.74
Reception apparatus for radio broadcasting4	33.43	39.95	41.45	32.06	110.90	31.56	10.74	33.68	16.17	17.81	71.46	16.60	18.71
Recording equipments 5.....	31.52	14.28	5.05	12.17	8.66	42.02	7.70	7.96	12.65	19.19	12.34	12.23	17.93
Telecommunications equipment 6.....	2,141.07	2,411.17	3,642.68	1,663.96	2,235.01	2,003.02	1,158.86	1,200.83	1,010.66	1,918.00	1,554.09	3,417.78	1,284.60
Exports													
Office machines 1.....	17.33	0.42	0.30	1.18	9.19	0.27	4.12	4.51	1.26	0.24	-	31.74	2.81
Automatic data processing machines, storage units etc.....	36.12	124.18	72.86	15.16	35.96	33.58	56.48	71.65	35.09	10.39	44.32	10.19	16.16
Part and accessories 2.....	14.30	0.39	3.32	2.65	0.68	2.63	4.12	6.93	0.50	14.84	0.07	0.71	0.87
Monitors and projectors and reception apparatus for television3.....	7.90	3.24	5.04	10.58	20.90	11.94	3.68	50.13	1.90	0.02	47.45	40.50	8.56
Reception apparatus for radio broadcasting4	0.31	0.01	0.01	1.53	0.01	0.10	0.02	0.04	0.36	0.15	0.06	3.44	0.01
Recording equipments 5.....	0.06	0.00	0.14	1.12	0.12	0.05	0.01	0.01	0.00	17.43	0.04	0.03	0.68
Telecommunications equipment 6.....	19.40	213.02	21.35	52.19	45.73	3.80	114.85	17.73	16.78	0.00	81.42	15.19	13.87

Source; Kenya Revenue Authority (KRA).....

¹ Electronic calculating machines, cash registers, accounting machines, postage-

² For office machines and data processing machines

³ Include Television sets, decoders etc

⁴ Whether or not combined with sound recording or reproducing apparatus or a clock a video tuner

⁶ Such as computer, laptops, networking equipments etc plus their parts and accessories such as telephone sets, microphones, electric sound amplifier sets Television cameras, digital or video cameras recorders, radio or tv transmission apparatus etc

_ No data

Table 15(a): Local Electricity Generation by Source

							KWh Million
Month	Hydro	Geo - Thermal	Thermal ¹	Wind	Solar	Co-Generation	Total
2020							
January	357.69	476.60	54.51	89.70	7.59	0.01	986.09
February	341.94	430.73	53.83	100.16	6.94	0.02	933.62
March	359.11	460.27	55.65	85.88	7.80	0.02	968.74
April	297.63	411.76	35.75	88.03	7.75	0.04	840.96
May	319.47	391.79	56.30	105.62	7.89	0.01	881.09
June	334.17	421.44	61.87	88.45	6.96	0.01	912.90
July	357.84	433.46	60.63	110.42	6.78	0.00	969.14
August	357.69	423.59	70.50	118.62	6.68	0.01	977.09
September	355.75	380.70	89.46	139.82	6.79	0.01	972.51
October	373.09	440.13	79.51	121.83	8.16	0.01	1,022.74
November	385.05	396.82	59.65	147.84	7.59	0.01	996.96
December	400.31	392.50	77.37	134.98	7.10	0.03	1,012.29
2021*							
January	330.31	464.78	74.69	137.65	7.44	0.03	1,014.91
February	281.40	422.15	105.51	109.84	6.97	0.04	925.92
March	305.11	460.68	63.08	199.92	7.77	0.03	1,036.59
April	307.93	424.54	59.60	164.71	7.41	0.06	964.23
May	369.02	385.38	116.17	130.21	7.59	0.04	1,008.40
June	317.99	408.96	84.17	184.61	7.41	0.05	1,003.19
July	285.79	463.16	122.59	152.69	13.06	0.05	1,037.35
August	274.03	452.79	109.35	190.07	17.02	0.05	1,043.30

Source: Kenya Power

*Provisional

¹ Includes all offgrid power

Fig. 7: Electricity Generation by Source

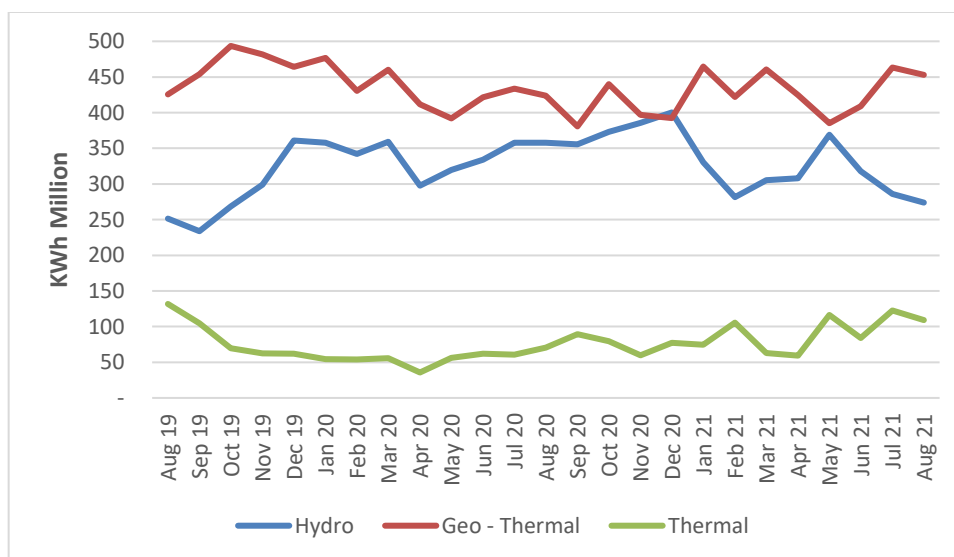


Table 15(b): Generation and Consumption of Electricity

Million KWh										
Month	Generation					Consumption				
	Local Generation	Imports			Total	Total Generation	Total KPLC Sales	Exports		
		Uganda	Tanzania	Ethiopia				Uganda	Tanzania	Total Exports
2020										
January	986.09	10.51	0.00	0.41	10.92	997.01	772.37	1.60	0.00	1.60
February	933.62	10.24	0.00	0.37	10.62	944.22	740.48	1.25	0.00	1.25
March	968.74	10.92	0.00	0.36	11.27	979.99	761.90	1.85	0.00	1.85
April	840.96	8.67	0.00	0.33	9.00	849.96	645.29	1.30	0.00	1.30
May	881.09	9.28	0.00	0.41	9.69	890.78	660.11	1.32	0.00	1.32
June	912.90	10.94	0.00	0.40	11.34	924.25	716.08	1.31	0.00	1.31
July	969.14	12.16	0.00	0.41	12.57	981.71	729.11	1.38	0.00	1.38
August	977.09	12.88	0.00	0.43	13.31	990.40	733.67	1.25	0.00	1.25
September	972.51	13.31	0.00	0.39	13.70	986.21	751.23	1.14	0.00	1.14
October	1,022.74	11.79	0.00	0.44	12.23	1,034.97	778.02	1.30	0.00	1.30
November	996.96	10.02	0.00	0.35	10.37	1,007.32	757.68	1.42	0.00	1.42
December	1,012.29	11.28	0.00	0.39	11.66	1,023.95	748.44	1.42	0.00	1.42
2021*										
January	1,014.91	16.00	0.00	0.44	16.44	1,031.35	792.01	0.73	0.00	0.73
February	925.92	20.26	0.00	0.41	20.67	946.59	742.34	0.49	0.00	0.49
March	1,036.59	22.20	0.00	0.40	22.60	1,059.19	799.42	0.54	0.00	0.54
April	964.23	15.20	0.00	0.40	15.60	979.83	775.02	2.79	0.00	2.79
May	1,008.40	23.73	0.00	0.43	24.16	1,032.56	785.36	3.00	0.00	3.00
June	1,003.19	23.19	0.00	0.33	23.52	1,026.72	796.34	1.90	0.00	1.90
July	1,037.35	28.68	0.00	0.43	29.11	1,066.46	813.35	1.72	0.00	1.72
August	1,043.30	26.33	0.00	0.44	26.77	1,070.08	818.89	1.61	0.00	1.61

Source: Kenya Power

*Provisional

Table 15(c): Consumption of Petroleum Fuels

'000 MT								
Month	AGO (Light Diesel Oil)	Jet	Fuel Oil	Motor Spirit	Illuminatin g Kerosene	IDO (Heavy Diesel Oil)	LPG	Aviation Gasoline
2020								
January.....	190.11	62.21	13.61	123.45	11.21	0.00	12.89	0.13
February....	173.90	58.45	18.10	112.98	10.93	0.32	36.54	0.10
March.....	187.57	42.55	24.79	111.44	10.85	0.21	23.98	0.11
April.....	137.71	6.32	21.36	82.20	10.76	0.00	31.43	0.03
May	139.71	17.38	22.79	91.89	10.98	0.00	30.86	1.19
June.....	158.19	19.42	18.85	103.91	12.16	0.00	23.33	0.02
July.....	185.64	23.19	21.14	125.51	9.93	0.00	28.24	0.05
August.....	191.38	29.72	25.96	120.20	13.18	0.03	41.31	0.06
September..	194.96	30.67	25.81	121.16	7.65	0.12	21.42	0.08
October.....	199.14	34.15	23.52	131.44	12.72	1.07	27.24	0.05
November..	187.96	34.06	23.51	121.94	9.29	3.54	26.61	0.08
December..	197.19	40.26	32.05	145.29	8.92	5.66	22.38	0.08
2021*								
January.....	183.26	41.27	18.25	121.83	10.07	0.00	36.68	0.05
February....	177.73	40.25	27.75	119.43	10.45	0.03	26.92	0.07
March.....	214.34	42.85	12.40	135.08	11.60	0.37	31.77	0.08
April.....	180.98	37.51	18.62	116.21	10.23	0.23	26.38	0.07
May.....	181.11	35.93	31.16	122.63	9.67	0.23	33.88	0.64
June.....	193.00	37.41	36.11	124.09	8.73	0.01	33.22	0.12

Source: Ministry of Energy and Petroleum and Energy & Petroleum Regulatory Authority (EPRA)

MT: Denotes Metric Tonnes

*Provisional

Table 15(d): Average Retail Prices for Selected Fuel Products within Nairobi

KSh per litre			
Period	Motor Gasoline Premium	Light Diesel Oil (Gasoil)	Illuminating Kerosene
2020			
January.....	110.20	102.32	103.95
February....	112.87	104.45	102.69
March.....	110.87	101.65	95.46
April.....	92.87	97.56	77.28
May.....	83.33	78.37	79.77
June.....	89.10	74.57	62.46
July.....	100.48	91.87	65.45
August.....	103.95	94.63	83.65
September..	105.43	94.51	83.15
October.....	107.27	92.91	83.73
November..	105.85	90.70	81.63
December..	106.82	91.82	83.56
2021			
January.....	106.99	96.4	87.12
February....	115.18	101.91	92.44
March.....	122.81	107.66	97.85
April.....	122.81	107.66	97.85
May.....	126.37	107.66	97.85
June.....	127.14	107.66	97.85
July.....	127.14	107.66	97.85
August.....	127.14	107.66	97.85

Table 15(e): Average Retail Prices for Selected Fuels in Kenya (National Average Retail Prices)

Period	Motor Gasoline Premium (KSh per Litre)	Light Diesel Oil (KSh per Litre)	Illuminating Kerosene (KSh per Litre)	L.P.G (KSh per 13 Kg)	Charcoal (KSh per Kg)
2020					
January.....	110.61	102.81	104.46	2,144.81	152.25
February.....	112.58	105.37	103.65	2,055.30	58.12
March.....	112.07	102.93	96.72	2,065.98	56.83
April.....	94.09	98.84	78.59	2,077.88	57.87
May.....	84.58	79.67	81.08	2,075.87	57.41
June.....	90.34	75.88	63.79	2,078.50	57.19
July.....	101.37	92.81	66.41	2,075.00	57.37
August.....	104.83	95.57	84.60	2,060.15	58.60
September.....	106.30	95.45	84.09	2,033.57	58.29
October.....	108.13	93.85	84.67	2,017.77	58.20
November.....	106.72	91.64	82.58	2,019.88	58.20
December.....	107.69	92.75	84.50	1,977.36	57.76
2021					
January.....	107.86	97.33	88.07	2,018.93	58.51
February.....	116.03	102.84	93.37	2,031.21	58.37
March.....	123.66	108.58	98.78	2,074.23	59.42
April.....	123.66	108.58	98.78	2,074.23	59.83
May.....	127.21	108.58	98.78	2,074.23	58.07
June.....	127.98	108.58	98.78	2,074.23	58.79
July.....	127.98	108.58	98.78	2,394.18	59.52
August.....	127.98	108.58	98.78	2,420.68	59.38

Note: Unit of measure for charcoal changed to 1 kg beginning February 2020

Fig. 8: Average Prices for Liquefied Petroleum Gas in Kenya ('000 KSh per 13 Kg cylinder)

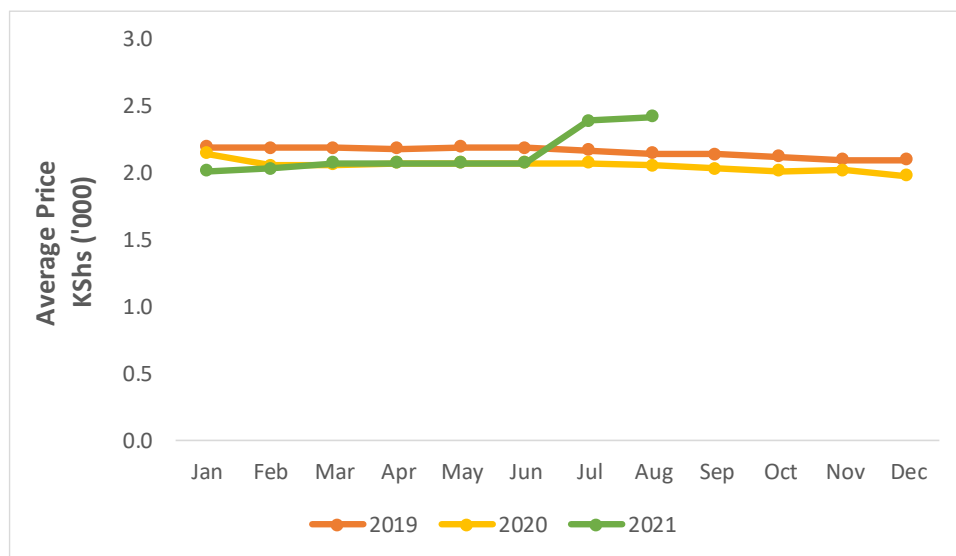


Table 15(f): Opec Reference basket and Murban Crude Oil Prices

Month/Year	US\$/ BBL				
	2017	2018	2019	2020	2021*
January.....	55.35	66.28	60.81	66.09	54.38
February.....	56.10	65.98	65.64	55.53	61.05
March.....	52.60	66.31	68.60	33.92	64.56
April.....	53.40	70.97	73.05	17.66	63.24
May.....	51.45	76.71	69.70	25.17	66.91
June.....	47.30	73.22	62.75	37.05	71.89
July.....	48.60	76.00	64.86	43.42	73.53
August.....	48.85	74.91	60.16	45.19	70.33
September.....	55.70	78.75	62.39	41.54	
October.....	63.83	81.28	60.88	40.08	
November.....	63.65	68.05	63.48	42.61	
December.....	62.06	59.33	66.66	49.17	

US\$/ BBL: US Dollar per Barrel

2016-2019 prices are Murban Adnoc crude oil monthly average prices

Price: Abu Dhabi Free On Board (FOB)

ADNOC: Abu Dhabi National Oil Corporation

* As from Feb 2020 all prices published will refer to the OPEC reference basket as defined by the Monthly oil market report

* As from Feb 2020 all prices published are crude spot prices on the 20th of the reference month

Table 16: Value of Building Plans Approved for Nairobi City County

KSh Million

Month	Actual Value of Buildings		
	Residential	Non Residential	Aggregate
2020			
January.....	12,361.60	7,985.49	20,347.09
February.....	24,801.96	6,716.30	31,518.26
March.....	22,827.64	7,744.80	30,572.44
April.....	12,284.89	8,749.42	21,034.30
May.....	3,430.74	2,582.29	6,013.02
June.....	-	-	-
July.....	-	-	-
August.....	5,037.15	2,127.04	7,164.20
September.....	3,302.22	828.84	4,131.06
October.....	-	-	-
November.....	8,335.88	5,160.24	13,496.11
December.....	16,776.05	2,522.87	19,298.92
2021			
January.....	6,329.78	2,702.02	9,031.80
February.....	7,497.72	2,130.36	9,628.08
March.....	11,270.96	2,903.69	14,174.64
April.....	4,284.75	619.74	4,904.48
May.....	2,708.76	2,038.99	4,747.75

Table 17(a): Domestic Production of Sugar

Month/Year	Metric tonnes				
	2017	2018	2019	2020	2021*
January	53,071	62,819	53,060	53,155	58,044
February	49,094	53,835	46,139	51,083	61,508
March	42,238	49,148	45,463	52,699	66,494
April	26,230	36,682	35,312	45,468	58,404
May	15,246	28,933	36,307	46,350	57,796
June	16,113	28,320	28,545	49,680	58,968
July	17,882	30,260	25,097	53,155	
August	10,892	35,676	32,835	53,434	
September	21,649	40,725	33,356	54,873	
October	31,621	45,324	35,259	54,830	
November	43,175	41,107	30,900	50,227	
December	48,900	38,268	38,662	38,834	
Total	376,111	491,097	440,935	603,788	361,214

Source: Sugar Directorate

*Provisional

Table 17(b): Production of Soft Drinks

	'000 Litres				
Month	2017	2018	2019	2020	2021*
January	50,409	52,062	53,585	52,654	52,537
February	43,353	49,685	55,218	42,072	44,421
March	50,623	52,580	61,413	52,109	53,498
April	46,399	45,690	58,230	35,951	51,749
May	40,742	41,482	53,086	34,129	51,201
June	45,875	44,827	46,074	47,273	
July	41,980	43,725	47,149	39,833	
August	41,217	48,795	49,248	39,290	
September	40,221	45,956	53,234	52,436	
October	45,275	46,546	47,586	47,215	
November	45,073	50,201	50,715	42,916	
December	66,378	54,021	55,398	64,707	
Total	557,548	575,569	630,936	550,585	253,406

**Provisional*

Table 17(c): Production of Assembled Vehicles

Month/Year	Numbers				
	2017	2018	2019	2020	2021*
January	276	395	431	614	559
February	578	529	614	861	561
March	645	548	633	830	705
April	436	409	739	669	732
May	434	407	732	659	609
June	323	366	556	415	576
July	483	587	648	735	
August	302	434	709	595	
September	351	606	595	591	
October	370	569	728	676	
November	364	476	872	533	
December	322	327	545	547	
Total	4,884	5,653	7,802	7,725	3,742

**Provisional*

Table 17(d): Production of Galvanized Sheets

Month/Year	Metric Tonnes				
	2017	2018	2019	2020	2021*
January.....	26,230	23,919	20,124	23,397	17,788
February.....	22,994	21,890	22,749	21,989	19,716
March.....	22,574	22,048	26,313	18,527	20,676
April.....	23,225	21,434	23,214	6,259	21,056
May.....	23,081	22,271	22,501	18,042	22,017
June.....	15,424	21,434	24,667	23,730	21,505
July.....	22,640	22,510	23,260	24,493	
August.....	15,296	21,847	21,918	23,226	
September....	24,188	22,425	22,641	20,801	
October.....	21,312	23,906	22,619	22,868	
November.....	24,357	22,877	21,871	23,268	
December.....	21,438	21,266	22,547	20,854	
Total	262,759	267,828	274,425	247,455	122,759

**Provisional*

Table 17(e): Cement Production and Consumption

Month/Year	Tonnes					
	2019		2020		2021*	
	Production	Consumption	Production	Consumption	Production	Consumption
January.....	485,178	483,747	530,404	528,904	652,883	647,491
February.....	470,146	469,809	548,818	547,543	612,980	606,547
March.....	507,037	505,465	559,424	551,914	721,444	716,740
April.....	501,921	500,357	509,197	506,800	695,953	684,852
May.....	486,301	486,637	511,961	509,698	717,669	707,891
June.....	477,432	466,923	594,421	591,799	698,424	686,024
July.....	527,115	527,771	666,341	659,798	741,647	726,873
August.....	512,470	510,066	712,701	691,588		
September.....	519,370	515,953	707,033	677,381		
October.....	504,615	499,355	731,253	723,124		
November.....	479,085	474,075	668,507	662,609		
December.....	496,517	493,176	666,855	661,504		
TOTAL.....	5,967,186	5,933,333	7,406,914	7,312,662	4,841,000	4,776,420

*Provisional

Table 17(f): Milk Intakes in the Formal Sector

						Million Litres
Month/Year	2016	2017	2018	2019	2020	2021
January.....	56.80	45.13	51.55	68.07	63.39	63.80
February.....	52.83	46.24	47.30	54.66	53.88	64.62
March.....	48.41	38.64	49.85	54.33	56.09	62.79
April.....	54.35	47.09	52.01	41.46	48.61	59.05
May.....	49.49	47.24	49.63	48.29	49.36	76.28
June.....	66.37	48.87	50.33	52.33	53.24	73.19
July.....	58.47	42.55	53.18	63.54	54.31	70.31
August.....	56.15	54.95	52.56	60.46	59.31	
September.....	43.67	55.81	56.37	63.21	58.04	
October.....	56.93	58.14	55.25	59.32	59.71	
November.....	54.09	55.21	57.02	51.30	60.58	
December.....	50.66	51.51	68.15	68.91	67.86	
Total.....	648.22	591.38	643.20	685.87	684.38	470.03

Source: Kenya Dairy Board

* Provisional

Revised +

Fig. 9: Milk Intake in the Formal Sector

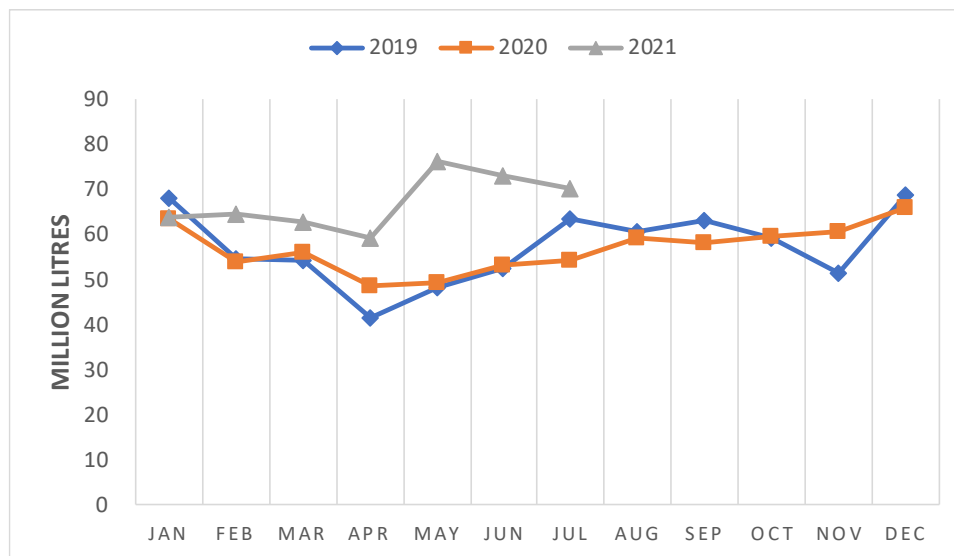


Table 18: Visitor Arrivals through J.K.I.A and M.I.A

Numbers ¹			
Month	AIRPORT		Total
	JKIA	MIA	
2020			
January	113,082	12,205	125,287
February	106,352	11,086	117,438
March	43,346	3,950	47,296
April	9	0	9
May	94	0	94
June	422	2	424
July	475	1	476
August	16,091	671	16,762
September	18,979	761	19,740
October	27,809	1,173	28,982
November	30,062	1,149	31,211
December	43,226	3,109	46,335
2021*			
January	43,234	3,045	46,279
February	32,047	3,005	35,052
March	37,214	3,194	40,408
April	27,850	3,037	30,887
May	32,153	1,735	33,888
June	46,494	2,038	48,532
July	64,493	4,532	69,025

Source: Department of immigration Services Kenya

¹ Visitor arrivals exclude Kenyans

+ Revised

* Provisional

Fig. 10: Visitor Arrivals through J.K.I.A and M.I.A

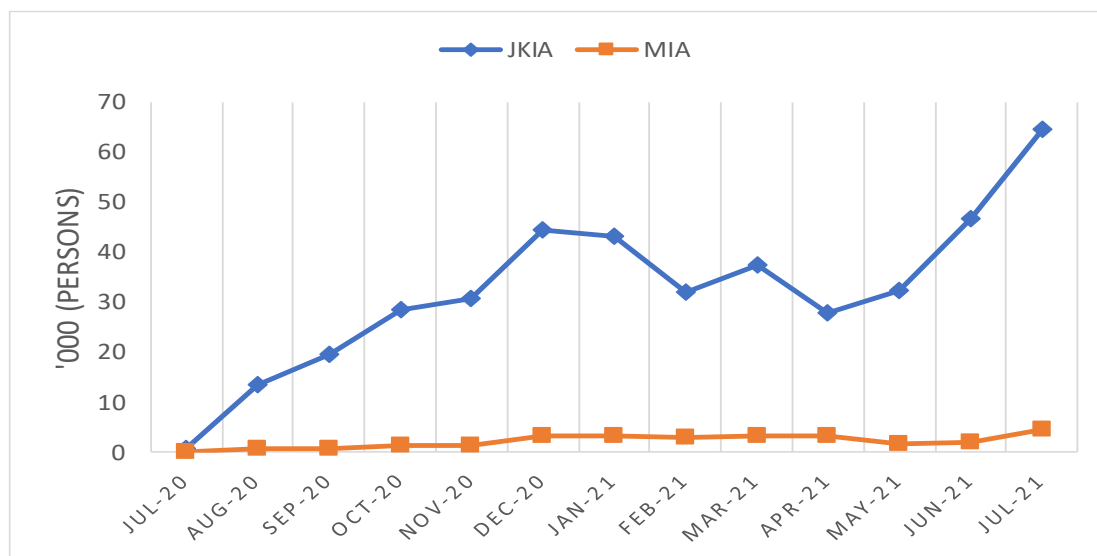


Table 19(a): Jomo Kenyatta international airport-Embarked Passengers by Port of Destination

PORTS/MONTH	2020					2021*								Number
	Aug	Sep	Oct	Nov	Dec	Jan	Feb	Mar	Apr	May	Jun	Jul	Aug	
Amsterdam	2,919	1,873	2,642	2,401	3,154	3,918	2,579	3,933	3,637	4,169	4,808	7,054	9,019	
Brussels	0	0	0	0	0	0	0	11	0	0	0	0	0	
London	2,522	2,526	2,541	2,494	3,379	3,735	2,779	4,348	2,026	5	85	378	840	
Paris	1,117	1,291	1,441	773	1,678	2,712	1,250	1,232	1,413	1,617	3,577	5,581	8,754	
Zurich	113	347	209	2	0	0	0	0	0	0	0	0	0	
Other Europe	3,510	3,162	3,823	3,358	4,224	5,667	4,135	5,101	5,556	3,944	6,255	7,984	9,246	
Total Europe	10,181	9,199	10,656	9,028	12,435	16,032	10,743	14,625	12,632	9,735	14,725	20,997	27,859	
New York	0	0	91	512	1,075	351	428	428	536	524	1,766	2,630	2,912	
Other North America	0	0	0	0	0	0	0	0	0	0	0	0	0	
Total North America	0	0	91	512	1,075	351	428	428	536	524	1,766	2,630	2,912	
Dubai	3,785	5,186	6,665	7,544	10,128	10,653	7,960	10,073	8,449	8,587	10,033	12,040	16,696	
Jeddah	0	103	191	565	512	1,742	1,731	1,811	1,452	1,981	1,506	4,350	6,735	
Other Middle East	3,216	3,743	4,876	5,672	6,799	8,698	7,369	12,548	12,471	9,844	11,031	18,103	23,501	
Total Middle East	7,001	9,032	11,732	13,781	17,439	21,093	17,060	24,432	22,372	20,412	22,570	34,493	46,932	
Mumbai	0	0	689	1,983	1,918	1,542	1,521	3,214	1,937	0	42	172	542	
Bangkok	0	0	0	0	0	0	0	0	0	0	0	0	0	
Other Far East	1,075	1,021	1,381	2,492	3,937	3,887	2,683	1,906	2,241	2,065	2,645	2,315	1,325	
Total Far East	1,075	1,021	2,070	4,475	5,855	5,429	4,204	5,120	4,178	2,065	2,687	2,487	1,867	
Addis Ababa	3,264	3,655	4,945	5,987	7,504	9,606	7,253	8,031	6,534	8,636	8,871	9,152	11,119	
Bujumbura	0	58	0	648	908	836	481	490	361	373	519	1,060	918	
Dar-es-alaam	59	301	1,975	2,189	2,661	2,864	1,999	2,126	2,979	3,709	4,219	4,826	5,238	
Entebbe	46	62	3,500	4,615	5,190	4,999	4,718	5,719	5,095	5,407	4,147	3,421	5,258	
Kigali	1,796	1,693	1,957	2,296	2,836	2,336	1,238	1,938	2,108	2,476	2,991	2,760	4,297	
Kinshasa	19	359	882	961	1,126	1,623	1,672	1,851	2,168	1,589	1,514	1,299	1,286	
Other East & Central Africa	3	229	590	664	747	890	754	1,148	963	822	1,125	1,749	2,151	
Total East & Central Africa	5,187	6,357	13,849	17,360	20,972	23,154	18,115	21,303	20,208	23,012	23,386	24,267	30,267	
Mauritius	0	58	0	0	0	178	0	0	0	0	0	0	101	
Seychelles	0	0	4	0	86	0	7	0	1	0	0	223	375	
Zanzibar	0	118	1,010	1,448	2,461	1,156	773	610	230	309	430	932	853	
Other Indian Ocean Islands	300	278	678	820	1,184	1,843	356	449	442	284	779	1,672	953	
Total Indian Ocean Islands	300	454	1,692	2,268	3,731	3,177	1,136	1,059	673	593	1,209	2,827	2,282	
Abidjan	440	267	747	310	377	751	538	356	379	75	0	335	230	
Douala	436	427	499	397	890	969	681	572	384	220	216	322	319	
Lagos	48	922	1,132	2,230	3,581	3,047	1,283	1,315	1,994	1,511	1,713	1,827	1,789	
Accra	48	214	621	1,272	1,689	1,792	1,388	1,924	1,344	1,270	1,361	1,453	1,518	
Other West Africa	122	102	42	4	0	5	66	128	106	2	11	4	5	
Total West Africa	1,094	1,932	3,041	4,213	6,537	6,564	3,956	4,295	4,207	3,078	3,301	3,941	3,861	
Johannesburg	80	153	2,344	2,941	3,926	3,643	3,670	3,891	3,467	3,780	3,609	3,282	4,297	
Harare	5	0	261	205	486	489	285	430	489	260	306	604	740	
Lilongwe	0	176	409	505	999	1,095	762	1,200	1,249	988	964	838	1,054	
Lusaka	531	312	799	1,113	1,304	923	504	764	970	785	1,006	924	933	
Cape Town	0	0	0	0	173	69	124	233	147	51	62	0	81	
Other South Africa	183	0	323	526	1,167	1,385	1,095	1,164	816	466	445	587	499	
Total Southern Africa	799	641	4,136	5,290	8,055	7,604	6,440	7,682	7,138	6,330	6,392	6,235	7,604	
Cairo	1,149	739	758	860	1,103	1,170	979	1,340	1,267	1,158	1,583	1,974	2,601	
Khartoum	0	0	0	5	16	14	2	3	5	0	0	116	4	
Juba	1,125	1,639	1,692	1,849	1,581	2,801	1,657	1,738	2,016	2,076	2,340	2,525	2,773	
Other North Africa	0	2	13	6	4	67	9	81	42	57	76	64	0	
Total North Africa	2,274	2,380	2,463	2,720	2,704	4,052	2,647	3,162	3,330	3,291	3,999	4,679	5,378	
Other International	2,658	3,632	4,645	5,481	4,731	4,781	3,878	4,879	3,125	1,425	3,549	5,971	7,063	
Total International	30,569	34,648	54,375	65,128	83,534	92,237	68,607	86,985	78,399	70,465	83,584	108,527	136,025	

Source: Kenya Airports Authority

*Provisional

Table 19(b): Jomo Kenyatta international airport- Landed Passengers by Port of Origin

PORTS/MONTH	2020					2021*							Number
	Aug	Sep	Oct	Nov	Dec	Jan	Feb	Mar	Apr	May	Jun	Jul	Aug
Amsterdam	2,500	2,127	2,791	2,726	5,007	3,484	2,238	3,411	2,726	4,404	5,476	7,866	7,084
Brussels	0	0	0	0	0	0	0	0	0	0	16	0	0
London	2,837	2,600	3,443	3,584	6,509	4,216	2,750	2,837	1,004	5	153	749	1,111
Paris	1,070	1,163	1,560	963	2,396	2,418	1,262	966	969	1,600	4,334	6,985	5,817
Zurich	244	520	448	0	0	0	0	6	0	0	0	0	0
Other Europe	4,017	3,617	3,977	4,482	5,892	5,768	4,031	4,350	3,067	3,895	6,398	7,736	8,645
Total Europe	10,668	10,027	12,219	11,755	19,804	15,886	10,281	11,570	7,766	9,904	16,377	23,336	22,657
New York	0	0	0	0	1,136	710	264	507	306	927	2,279	2,732	2,044
Other North America	0	0	0	0	0	0	0	0	0	0	0	0	0
Total North America	0	0	0	0	1,136	710	264	507	306	927	2,279	2,732	2,044
Dubai	5,102	5,348	7,576	7,317	11,388	10,504	8,575	9,727	8,323	8,405	11,028	14,745	13,923
Jeddah	162	87	827	881	621	559	678	695	569	954	1,636	1,546	1,950
Other Middle East	5,348	4,017	4,750	5,147	9,371	7,301	5,988	7,223	5,694	7,916	12,934	18,200	21,110
Total Middle East	10,612	9,452	13,153	13,345	21,380	18,364	15,241	17,645	14,586	17,275	25,598	34,491	36,983
Mumbai	215	0	1,369	1,614	2,078	1,851	1,859	1,791	3,043	200	384	922	129
Bangkok	0	0	0	0	0	0	0	0	0	0	0	0	0
Other Far East	496	1,352	1,346	2,326	2,472	3,115	2,764	4,210	1,952	1,554	2,347	2,372	2,673
Total Far East	711	1,352	2,715	3,940	4,550	4,966	4,623	6,001	4,995	1,754	2,731	3,294	2,802
Addis Ababa	3,102	3,687	5,921	6,723	9,279	7,449	6,495	7,714	6,532	8,576	9,920	10,596	11,662
Bujumbura	7	93	2	511	807	1,003	522	483	477	458	495	880	1,132
Dar-es-alaam	424	304	2,259	2,396	2,787	3,645	2,560	2,484	2,626	2,968	3,606	3,425	4,270
Entebbe	63	63	2,957	3,823	5,030	5,108	4,130	5,300	4,648	5,357	4,876	4,150	5,384
Kigali	1,346	1,375	2,007	2,334	3,122	2,728	1,630	2,147	1,927	2,669	3,557	3,448	4,021
Kinshasa	27	416	770	999	1,142	1,354	1,492	1,735	1,815	1,587	1,149	896	1,347
Other East & Central Africa	10	148	101	455	1,200	1,076	1,102	1,428	1,363	1,030	1,550	1,591	1,526
Total East & Central Africa	4,979	6,086	14,017	17,241	23,367	22,363	17,931	21,291	19,388	22,645	25,153	24,986	29,342
Mauritius	0	23	0	0	0	0	0	0	0	0	0	0	69
Seychelles	0	0	0	4	87	0	6	0	0	7	11	119	230
Zanzibar	0	90	1,164	1,281	1,932	1,709	991	972	993	1,362	1,558	2,140	2,510
Other Indian Ocean Islands	235	352	750	1,361	1,494	667	578	582	315	366	569	988	2,399
Total Indian Ocean Islands	235	465	1,914	2,646	3,513	2,376	1,575	1,554	1,308	1,735	2,138	3,247	5,208
Abidjan	238	261	486	460	652	615	507	396	350	196	0	431	374
Douala	0	0	0	121	0	0	0	0	0	48	0	1	0
Lagos	227	436	923	1,857	2,648	2,404	1,119	1,010	1,407	1,367	1,543	1,676	1,603
Accra	69	231	940	1,412	1,600	1,622	1,707	2,281	2,028	1,670	1,746	1,712	1,757
Other West Africa	417	610	537	622	562	1,427	753	650	267	157	288	279	467
Total West Africa	951	1,538	2,886	4,472	5,462	6,068	4,086	4,337	4,052	3,438	3,577	4,099	4,201
Johannesburg	289	169	2,518	3,795	4,827	3,801	3,127	4,026	4,045	4,847	4,470	4,748	4,958
Harare	93	5	472	792	1,023	1,017	591	790	978	808	1,281	1,022	809
Lilongwe	7	212	439	292	393	487	567	715	888	648	657	603	567
Lusaka	567	236	486	567	982	644	502	619	575	496	581	972	1,056
Cape Town	0	0	0	0	206	248	109	173	207	0	4	0	41
Other South Africa	16	107	649	1,156	1,855	1,723	1,209	1,203	1,004	1,156	1,118	1,316	1,396
Total Southern Africa	972	729	4,564	6,602	9,286	7,920	6,105	7,526	7,697	7,955	8,111	8,661	8,827
Cairo	774	933	813	899	975	794	754	1,042	961	972	963	1,785	1,967
Khartoum	3	12	6	0	9	0	8	2	9	1	0	31	0
Juba	1,183	1,284	1,505	1,665	2,833	1,684	1,518	2,023	1,896	2,080	2,301	3,580	2,838
Other North Africa	7	1	0	6	6	50	1	96	90	26	94	105	2
Total North Africa	1,967	2,230	2,324	2,570	3,823	2,528	2,281	3,163	2,956	3,079	3,358	5,501	4,807
Other International	1,408	2,646	3,979	4,155	5,070	3,885	4,101	4,379	3,273	1,565	1,577	4,859	5,688
Total International	32,503	34,525	57,771	66,726	97,391	85,066	66,488	77,973	66,327	70,277	90,899	115,206	122,559

Source: Kenya Airports Authority

*Provisional

Table 19(c): New Vehicle Registration

Body Type	2020						2021						Number
	Jul	Aug	Sep	Oct	Nov	Dec	Jan	Feb	Mar	May	Jun	Jul	2021
Saloons.....	678	704	611	930	798	1,050	640	459	553	474	741	754	
Station Wagons.....	5,702	5,659	4,322	4,322	6,070	7,494	5,128	3,773	4,390	3,483	5,887	6,259	
Vans.....	310	310	296	483	387	424	390	325	349	366	595	479	
Pick Ups.....	188	290	141	261	220	261	353	357	380	142	197	186	
Mini Buses.....	99	70	70	139	105	129	77	60	69	57	87	86	
Buses.....	99	65	44	136	52	104	94	78	76	51	64	77	
Lorries.....	605	580	626	697	637	738	494	606	629	482	638	588	
Trailers.....	229	281	264	215	317	309	358	320	290	217	360	256	
Motor Cycles.....	18,270	22,077	17,314	27,763	24,388	45,336	22,945	11,026	17,593	28,189	38,856	20,533	
Three Wheelers.....	490	598	767	772	332	371	632	975	406	596	634	331	
Wheeled Tractors.....	196	237	307	229	285	301	251	360	329	162	331	249	
Others.....	614	666	719	3,013	659	844	534	483	463	572	734	781	
Totals.....	27,480	31,537	25,481	38,960	34,250	57,361	31,896	18,822	25,527	34,791	49,124	30,579	

Source: National Transport and Safety Authority

Table 19(d): Passenger and Cargo Movement on the Standard Gauge Railway

Month	PASSENGER				FREIGHT			
	2020 ⁺		2021*		2020 ⁺		2021*	
	No. Passengers	Revenue (KSh)	No. Passengers	Revenue (KSh)	Tonnage	Revenue (KSh) ¹	Tonnage	Revenue (KSh) ¹
January	117,380	130,259,172	156,918	163,768,440	375,828	1,092,488,053	449,731	1,052,531,751
February	114,241	127,932,570	142,346	156,558,140	293,088	834,306,615	456,136	1,008,013,109
March	89,109	95,221,510	161,233	174,425,950	259,138	755,413,357	507,924	1,667,079,399
April	6,363	5,905,980	320	67,560	327,091	929,475,946	460,787	1,505,276,768
May	0	0	140,384	152,376,090	342,326	962,667,608	434,733	963,026,946
June	0	0	163,741	182,759,840	383,782	1,029,900,407	430,455	910,189,388
July	19,502	22,833,600	223,106	243,004,595	421,745	1,233,867,659	361,309	901,540,411
August	32,641	39,471,550	201,539	227,271,996	414,775	1,115,103,597	398,925	939,577,502
September	43,235	51,837,050			369,246	1,037,717,598		
October	112,411	125,443,750			427,388	1,178,620,650		
November	119,238	128,922,180			412,426	1,162,966,849		
December	157,432	168,201,190			391,610	1,103,652,196		
TOTAL	811,552	896,028,552	1,189,587	1,300,232,611.00	4,418,443	12,436,180,536.77	3,500,000	8,947,235,274

Source: Kenya Railways Corporation

*Provisional

¹ Excludes deductions from discounts offered to customers

⁺ Revised

Table 19(e): Monthly Cargo Throughput at the port of Mombasa

Metric tonnes														
Year	2020						2021							
	JUL	AUG	SEP	OCT	Nov	Dec	JAN	FEB	MAR	APR	May	Jun	Jul	AUG
Imports														
Dry General-Containerized	786,489	688,869	787,868	822,189	736,072	793,000	919,137	779,537	842,021	739,722	735,020	702,897	721,768	771,931
Dry General-Conventional	198,412	125,872	174,045	231,494	242,678	266,000	80,678	260,641	265,459	235,942	254,784	183,565	244,138	144,253
Dry Bulk	828,288	631,722	811,782	810,000	493,532	592,000	843,199	713,814	917,329	576,876	634,296	968,488	389,531	580,380
P.O.L ¹	619,260	596,029	579,402	629,406	693,395	851,000	700,928	640,567	700,991	596,002	675,219	429,387	752,922	607,033
Other Bulk Liquids	37,304	141,492	74,989	129,135	67,469	54,000	104,773	86,948	57,172	137,618	82,648	59,460	80,350	97,777
Sub-Total	2,469,753	2,183,984	2,428,086	2,571,374	2,233,146	2,556,000	2,648,715	2,481,507	2,782,972	2,286,160	2,381,967	2,343,797	2,188,709	2,201,374
Exports														
Dry General-Containerized	296,773	336,212	300,280	287,002	281,389	308,000	307,117	319,425	409,106	349,474	343,946	322,395	332,581	363,608
Dry General-Conventional	2,619	450	9,711	985	1,026	1,000	1,917	5,884	5,142	6,038	11,286	2,546	749	5,316
Dry Bulk	11,000	10,000	65,000	10,000	60,000	61,000	23,000	64,000	41,000	-	65,000	30,000	10,000	43,650
P.O.L ¹	4,500	5,600	2,600	1,702	2,600	2,000	6,375	-	6,148	3,000	2,750	2,500	4,466	1,500
Bunkers	1,297	2,901	702	1,502	1,502	2,000	4,675	491	3,111	2,300	698	792	1,253	1,308
Other Bulk Liquids	-	-	-	-	-	-	-	-	-	-	-	-	-	-
Sub-Total	316,189	355,163	378,293	301,191	346,517	374,000	343,084	389,800	464,507	360,812	423,680	358,232	349,049	415,382
Transshipment	213,553	144,687	138,613	160,270	230,772	211,000	169,373	336,718	223,422	190,324	211,461	197,428	238,661	140,937
Restows	12,650	6,007	8,397	10,028	8,402	11,000	8,564	6,655	7,163	13,522	13,824	12,223	9,242	10,164
Grand Total	3,012,145	2,689,841	2,953,389	3,042,863	2,818,837	3,152,000	3,169,736	3,214,680	3,478,064	2,850,818	3,030,932	2,911,680	2,785,661	2,767,857

Source: Kenya Ports Authority

¹Refers to Petroleum, Oil and Lubricants