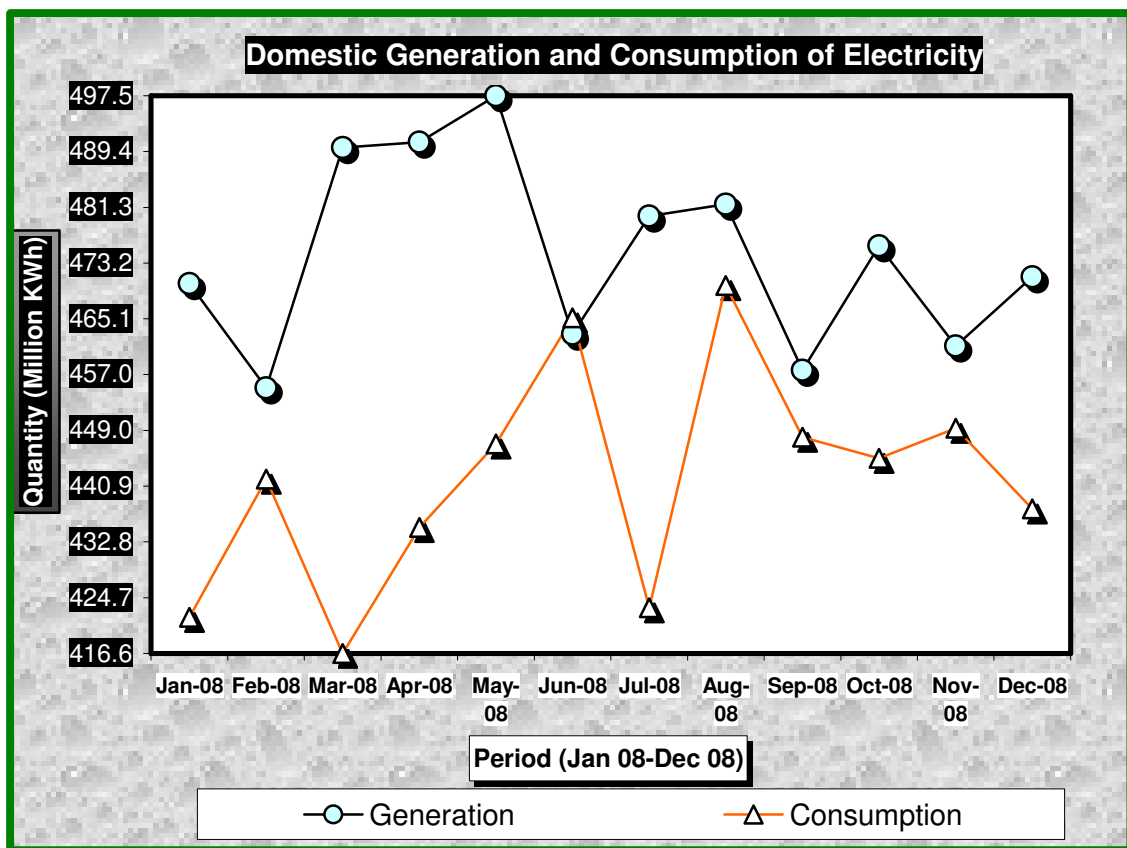


# LEADING ECONOMIC INDICATORS



**KENYA NATIONAL BUREAU OF STATISTICS**

P.O. Box 30266- 00100 Nairobi  
 Website: [www.knbs.go.ke](http://www.knbs.go.ke)

Tel: 317586/88, 317612/22 Fax: 315977  
 email: [director@knbs.go.ke](mailto:director@knbs.go.ke)

# DECEMBER 2008

## TABLE OF CONTENTS

### MACRO ECONOMIC STATISTICS

Key highlights on Leading Economic Indicators .....	3
TABLE 1: KENYA CONSUMER PRICE INDICES AND INFLATION RATE.....	3
TABLE 2: MEAN FOREIGN EXCHANGE RATES OF KENYA SHILLINGS AGAINST SELECTED MAJOR CURRENCIES AT THE END OF THE MONTH.....	10
Table 3: Interest Rates (%).....	12
TABLE 4: CAPITAL MARKETS – NAIROBI STOCK EXCHANGE.....	13
TABLE 5 (a): MONEY SUPPLY .....	14
TABLE 5b: FOREIGN EXCHANGE RESERVES .....	16

### AGRICULTURE

TABLE 6: COFFEE SALES AND PRICES .....	17
TABLE 7: TEA PRODUCTION AND PRICES* .....	18
Table 8(a): AVERAGE MONTHLY RETAIL PRICES FOR DRY MAIZE IN THE YEAR-2007.....	19
Table 8(b): Average Monthly Retail Prices for Dry Maize in the Year 2008 .....	20
Table 8(c): Average Monthly Retail Prices for Dry Beans Prices (2007) .....	21
Table 8(d): Average Monthly Retail Prices for Dry Beans Prices (2008) .....	22

### EXTERNAL TRADE

Table 9: Export of Coffee, Tea and Horticultural Produce .....	23
Table 10: Monthly Exports of Horticultural Products.....	24
Table 11: Kenya's External Trade, August 2007 – August 2008 .....	25
Table 12: Major Destinations of Domestic Exports, August 2007 – August 2008.....	26
Table 13: Major Origins of Imports, August 2007 – August 2008.....	27
Table 12 (a): Domestic Exports by Broad Economic Category .....	28

### ENERGY

Table 13 (a): Imports by Broad Economic Category .....	29
Table 14(a): Local Electricity Generation by Source .....	30
Table 14(b): Generation and Consumption of Electricity .....	31
Table 14 ( c ): Consumption of Petroleum Fuels .....	32
Table 14 (d): Weighted Average Retail Prices for Selected Fuel Products within Nairobi.....	33
Table 14 (e): Weighted Average Retail Prices for Selected Fuels in Kenya.....	34
Table 14(f): Murban ADNOC Prices 2003-2008.....	35

### MANUFACTURING AND, BUILDING AND CONSTRUCTION

Table 15: Value of Building Plans Approved by Nairobi City Council (NCC).....	36
Table 16(a): Domestic Production of Sugar .....	37
Table 16(c ): Production of Assembled Vehicles .....	38
Table 16(e): Cement production and Consumption .....	39
Table 16F: Milk Intakes in the Formal Milk Sector. ....	40

### TOURISM AND TRANSPORT

Table 17: Visitor Arrivals* through Jomo Kenyatta International Airport (J.K.I.A) and Moi International Airport (M.I.A) .....	41
TABLE (18A): JOMO KENYATTA INT. AIRPORT INTERNATIONAL FLIGHTS ONLY- EMBARKED PASSENGERS BY PORT OF DESTINATION. ....	42
TABLE (18B): JOMO KENYATTA INT. AIRPORT INTERNATIONAL FLIGHTS ONLY- LANDED PASSENGERS BY PORT OF DESTINATION.....	44
Table 18 C: New Vehicle Registration .....	46

## CHARTS

FIG. 1: OVERALL MONTH ON MONTH AND UNDERLYING INFLATION RATES -----	9
FIG 2: END OF MONTH MEAN EXCHANGE RATE OF KENYA SHILLINGS AGAINST MAJOR SELECTED CURRENCIES -----	11
FIG 3: INTEREST RATES -----	12
FIG 4: NAIROBI STOCK EXCHANGE SHARES INDEX -----	13
FIG 5: MONEY SUPPLY (M <sub>3</sub> ) -----	15
FIG 6: FOREIGN EXCHANGE RESERVES -----	16
FIG.7: COFFEE SALES AT THE NAIROBI COFFEE EXCHANGE -----	17
FIG.8: TEA PRODUCTION -----	18
Fig 9: Electricity Generation by Source -----	30
Fig 10: Electricity Generation Consumption and Power Losses -----	31
Fig 11(a): Average Retail Prices of selected Petroleum Products -----	33
Fig 11(b): Weighted Average Prices for LPG in Kenya -----	34
Fig 12: Trend for Murban ADNOC Crude Oil Prices -----	35
FIG 13: Milk Intake in the Formal Sector -----	40
FIG 14: VISITORS ARRIVING IN KENYA THROUGH THE MAIN AIRPORTS -----	41
FIG 15: J.K.I.A. PASSENGERS BY REGION OF DESTINATION -----	43
FIG 16: J.K.I.A. PASSENGERS BY REGION OF ORIGIN -----	45

## **Key highlights on Leading Economic Indicators**

### **Overview**

The monthly Leading Economic Indicators Publication for December 2008 highlight trends in Consumer Price Indices (CPI) and inflation, interest rates, exchange rates, international trade, agriculture, energy, manufacturing, building and construction, tourism and transport.

### **Macroeconomic Indicators and Financial Intermediation**

The CPI increased by 1.5 per cent from 301.79 points in November 2008 to 306.28 points in December 2008. Month-on-month overall inflation rate declined from 29.4 per cent in November 2008 to 27.7 per cent in December 2008. Month-on-month underlying inflation rate which excludes food items from the CPI basket also declined from 12.3 per cent in November 2008 to 10.6 per cent in December 2008.

The Kenyan Shilling recorded mixed performance for the January 2008 to December 2008. The Shilling opened the year against major international currencies in a low note due to the post election skirmishes before stabilizing in the second quarter of the year. The trend indicates that the Shilling weakened against the major international currencies in the last two quarters of 2008. The shilling depreciated against the US dollar, the Euro and Japanese Yen in December 2008 to trade at KSh 77.711, KSh 108.482 and KSh 86.065 compared to a trading of KSh 62.541, KSh 89.853 and KSh 55.237, respectively in December 2007. However the shilling appreciated against the Sterling Pound and the South Africa Rand to trade at KSh 112.347 and KSh 8.268 in December 2008 compared to KSh 124.785 and KSh 9.015 respectively in December 2007. The Shilling also appreciated against the Ugandan and Tanzanian Shilling in the same period.

On average the benchmark 91-day Treasury bill recorded higher rates in the last quarter of 2008 compared to the same quarter of 2007. The 91-day Treasury bill rose by 28.8 per cent from 6.87 per cent in December 2008 to 8.59 per cent in December 2008. The weighted average lending rate offered by Commercial banks for loans and advances rose from 13.32 per cent to 14.80 per cent while savings rate declined from 1.67 per cent to 1.62 per cent over the same period.

The Nairobi Stock Exchange had bearish activities in 2008 compared to bullish activities 2007 as witnessed by the decline in the 20-share index (NSE 20) which declined by 35.3 per cent from 5,444.8 points in December 2007 to 3,521.2 points in December 2008. Total value of shares traded rose by 10.0 per cent from KSh 88.6 billion in 2007 to KSh 97.5 billion in 2008. The increase in the value of shares may partly be attributed to the Safaricom IPO. Total number of shares tripled from 1,938.0 million shares to 5,856.5 million shares over the same period.

Broad money supply (M3) expanded gradually from KSh 777.6 billion in December 2007 to KSh 900.3 billion in December 2008. Money and quasi-money (M2) also expanded from KSh 666.9 billion to KSh 765.9 billion over the same period.

Gross Total Foreign Exchange Reserves also expanded gradually in 2008 from KSh 305.3 billion in December 2007 to stand at KSh 362.2 billion while Net Foreign Exchange Reserves expanded from KSh 255.8 billion to KSh 260.5 billion over the same period.

## **SECTORAL PERFORMANCES**

### **a). Agriculture**

Quantity of coffee auctioned at the Nairobi Coffee Exchange increased by 78.5 per cent from 2,173 MT in August 2008 to 3,878 MT in September 2008. However, the average auction price declined from KSh 179.50 per kilogram in August 2008 to KSh 173.56 per kilogram in September 2008.

Quantity of processed tea declined by 6.4 per cent from 369,605 MT in 2007 to 345,816 MT in 2008 while average auction price for tea increased from KSh 119.24 per kilogram to KSh 160.41 per kilogram over the same period.

Average price for dry maize increase marginally from KSh 25.4 per kilogram in June 2008 to KSh 24.8 per kilogram in July 2008 while average price for dry beans declined from KSh 63.84 per Kilogram to KSh 60.35 per kilogram over the same period with Korokocho and

Kikomba markets reporting the highest prices for maize and beans, respectively in July 2008.

**b). International Trade**

Quantity of coffee exported increased by 23.3 per cent from 2,774.5 MT in October 2008 to 3,421.2 MT in November 2008. The value of coffee exported increased by 26.6 per cent from KSh 718.2 to KSh 909.6 over the same period.

Quantity of tea exported declined by 11.2 per cent from 31,955.8 MT in October 2008 to 28,369.5 MT in November 2008 while its value declined by 19.7 per cent to stand at KSh 5,140.0 in November 2008.

Quantity of horticultural produce exported declined marginally from 192,147 MT in 2007 to 193,134 MT in 2008 while export value of horticultural produce also declined from KSh 67.2 billion to KSh 58.2 billion over the same period.

Volume of trade declined by 9.3 per cent from KSh 107.4 billion in October 2008 to KSh 97.4 billion in November 2008. Total exports and imports declined by 10.7 and 8.6 per cent over the same period.

Domestic exports by Broad Economic Category (BEC) indicate that food and beverages, non-food industrial supplies and fuel and lubricants greatly contributed to the decline in exports in November 2008.

Imports by Broad Economic Category (BEC) indicate that imports of fuel and lubricants, non-food industrial supplies and transport equipments contributed to the decline in imports to the country in November 2008 compared to October 2008. Fuel and lubricants, non-food industrial supplies and transport equipments declined by 36.4, 9.4 and 4.9 per cent, respectively in November 2008.

**c). Energy**

Total domestic electricity generation declined by 9.4 per cent from 6,287.8 million KWh in 2007 to 5,694 million KWh in 2008. The decline in generation may be attributed to a 9.8 per cent in hydro generation and 17.3 per cent in thermal generation. Total domestic consumption of electricity rose by 3.0 per cent from 5,120.9 million KWh in 2007 to 5,300 million KWh in 2008. Power losses improved marginally from 1,120.7 million KWh to 1,109.5 million KWh over the same period.

Exports of electricity to Uganda declined by 27.3 per cent from 68.9 million KWh in 2007 to 50.1 million KWh in 2008 while total imports of electricity from Uganda and Tanzania increased by 11.6 per cent from 22.5 million KWh to 25.1 million KWh over the same period.

Total consumption of petroleum products declined by 8.6 per cent from 3,121.8 thousand MT in 2007 compared to 2,854.1 thousand MT in 2008. The decline in consumption of petroleum products may be attributed to the high cost of fuel prevailing during that period.

In the domestic market, on average retail prices for motor gasoline, light diesel oil and illuminating kerosene were higher in 2008 compared to 2007. Average retail prices for motor gasoline, light diesel oil and illuminating kerosene declined to retail at KSh 83.61, KSh 77.54 and KSh 71.10 per litre in December 2008, respectively. In Nairobi, the price of motor gasoline and light diesel were retailing at KSh 77.07 and KSh 72.19 per litre in December 2008 down from KSh 93.27 and KSh 86.94 per litre in November 2008, respectively.

In the international market, the price of Murban crude oil declined by 53.5 per cent from US Dollars 90.60 per barrel in December 2007 to US Dollars 90.60 per barrel in December 2008.

**d). Manufacturing and, building and construction**

Domestic production of sugar increased from the lowest recorded in the year of 21,130 MT in August 2008 to 40,567 MT in September 2008 while production of soft drinks increased by 21.3 per cent from 22,418 MT in August 2008 to 27,199 MT in September 2008.

Production of new assembled vehicles increased by 3.1 per cent from 488 assembled vehicles in September 2008 to 503 assembled vehicles in October 2008 while production of galvanized sheets declined marginally from 17,255 MT to 17,247 MT over the same period.

Quantity of cement produced increased by 23.1 per cent from thousand 2,545.7 MT in 2007 to 3,134.3 thousand MT in 2008. Consumption of cement increased significantly by 35.3 per cent from 2,061.4 thousand MT to 2,789.0 thousand MT over the same period.

Milk deliveries in the formal milk sector rose by 5.7 per cent from 35.5 million litres in October 2008 to 37.3 million litres in November 2008.

**e). Tourism and Transport**

The number of visitors who arrived through Jomo Kenyatta International Airport (JKIA) and Moi International Airport declined by 6.0 per cent from 69,764 visitors in October 2008 to 65,593 visitors in November 2008.

The number of passengers who embarked at Jomo Kenyatta International Airport (JKIA) increased by 4.0 per cent from 132,134 persons in October 2008 to 137,416 persons in November 2008 however, passengers who landed declined by 7.1 per cent from 135,090 persons to 125,489 persons over the same period.

Total number of vehicles registered increased significantly by 42.8 per cent from 85,324 vehicles in registered in 2007 to 121,831 vehicles in 2008.

**TABLE 1: KENYA CONSUMER PRICE INDICES AND INFLATION RATE**

Base Oct 1997=100.

PERIOD	NAIROBI INDEX	REST* OF URBAN TOWNS INDEX	OVERALL KENYA INDEX	OVERALL MONTH ON MONTH INFLATION	UNDERLYING INFLATION RATE****
<b>2007</b>					
October	230.93	229.37	229.99	10.6	5.2
November	233.73	232.99	233.28	11.8	5.8
December	242.14	238.26	239.81	12.0	5.9
<b>2008</b>					
January	266.28	257.39	260.94	18.2	7.6
February	267.04	265.92	266.37	19.1	9.3
March	277.61	274.40	274.55	21.8	9.8
April	282.38	281.55	281.88	26.6	9.6
May	293.43	290.69	291.79	31.5	10.5
June	287.09	293.17	290.75	29.3	11.2
July	285.15	287.60	286.62	26.5	12.2
August	286.94	288.80	288.06	27.6	13.1
September	293.65	291.86	292.57	28.2	13.3
October	297.15	294.20	295.38	28.4	13.0
November	302.93	301.04	301.79	29.4	12.3
December	308.18	305.01	306.28	27.7	10.6

**Source: Kenya National Bureau of Statistics**

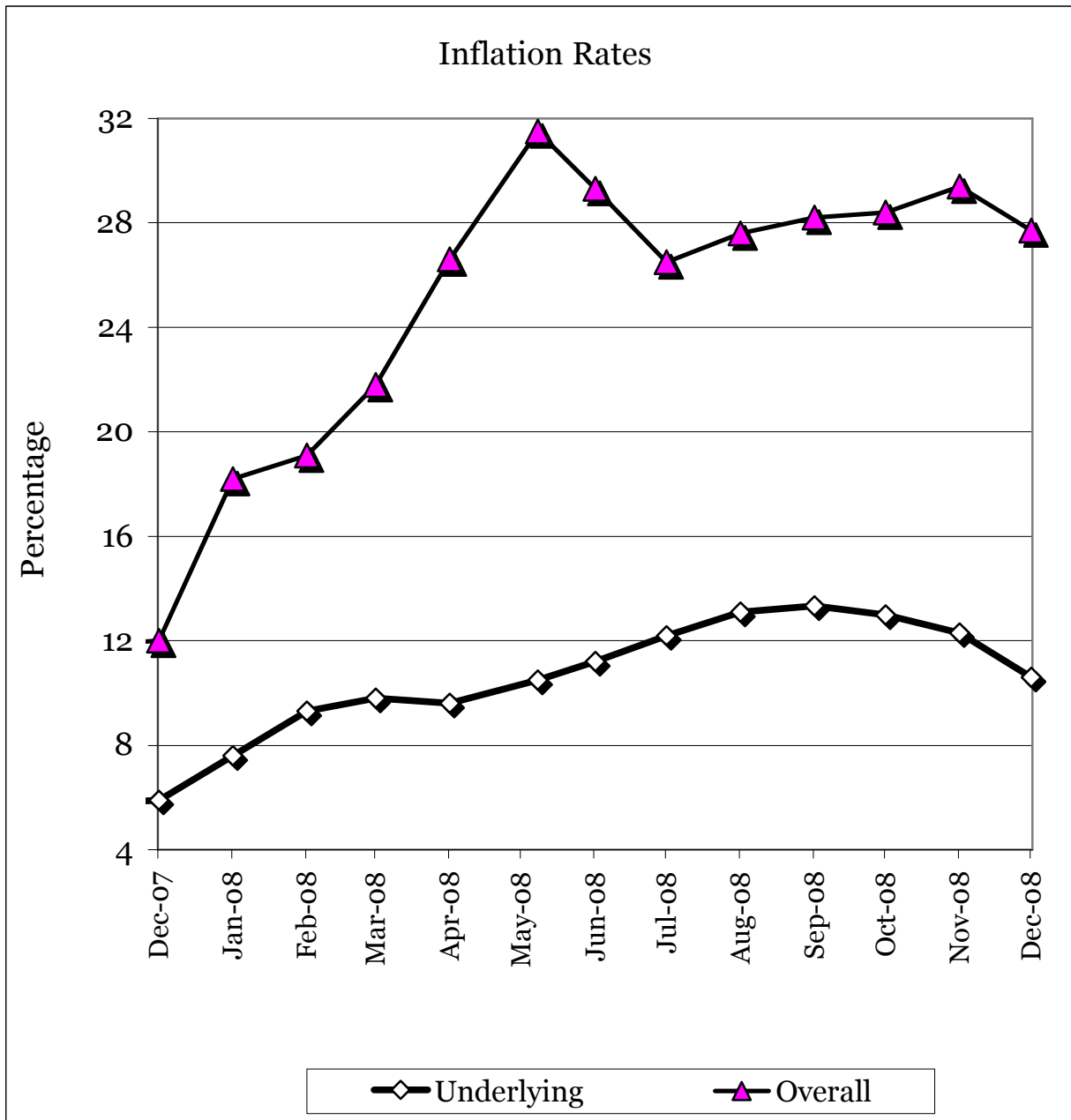
\* Rest of Urban include: Nyeri, Mombasa, Malindi, Kilifi, Meru, Garissa, Kisii, Kisumu, Nakuru, Kitale, Kabarnet, and Kakamega.

\*\* Provisional

\*\*\* The 'Month on Month' inflation rate is calculated as a percentage change of the CPI between the current month and the same month a year ago.

\*\*\*\* Underlying inflation rate measures inflation on non-food items in the CPI basket

**FIG. 1: OVERALL MONTH ON MONTH AND UNDERLYING INFLATION RATES**



**TABLE 2: MEAN FOREIGN EXCHANGE RATES OF KENYA SHILLINGS AGAINST SELECTED MAJOR CURRENCIES  
AT THE END OF THE MONTH**

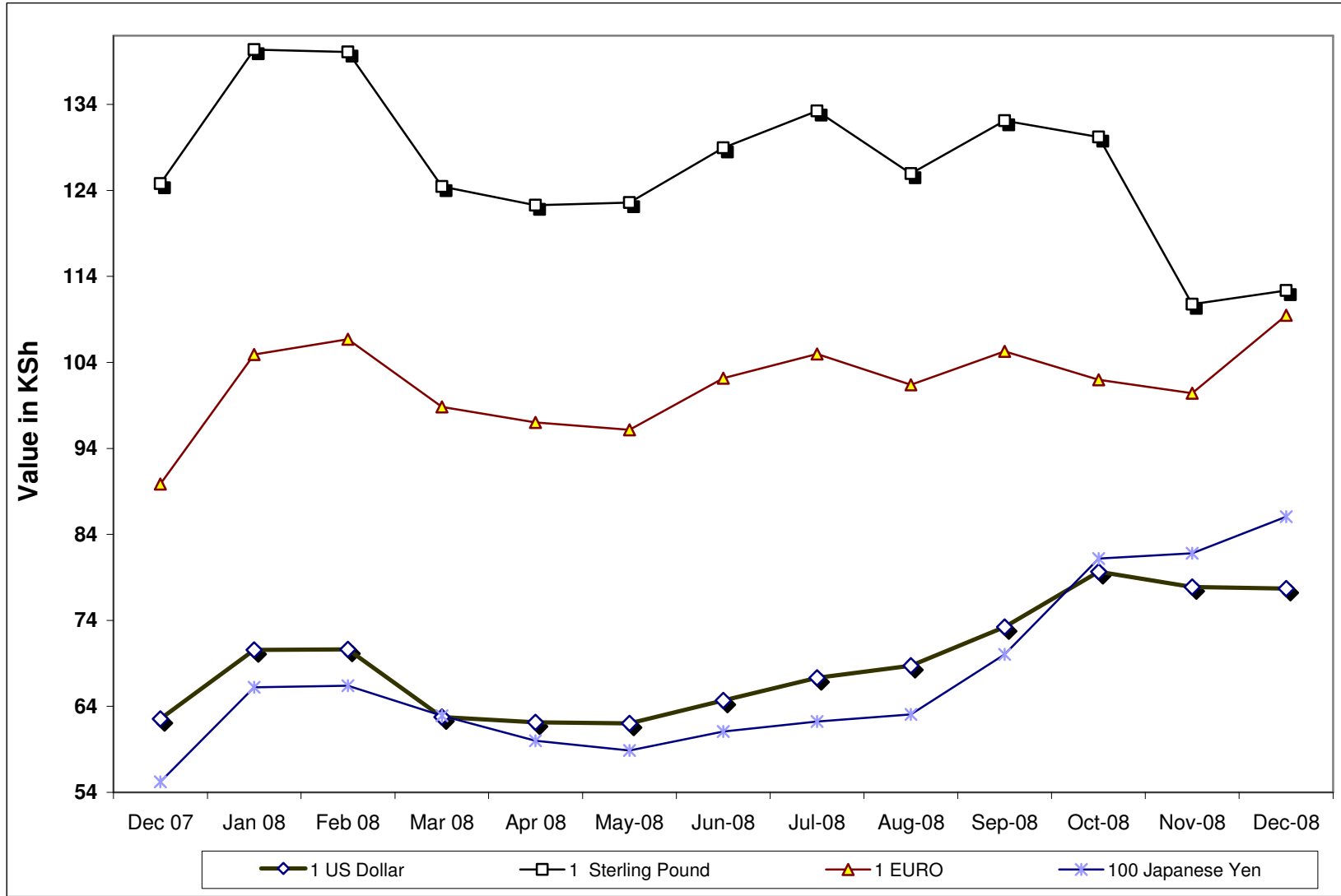
**TABLE 2**

CURRENCY	2007	2008											
	Dec	Jan	Feb	Mar	Apr	May	June	July	Aug	Sep	Oct	Nov	DEC
1 US Dollar	62.541	70.561	70.639	62.766	62.136	62.029	64.694	67.318	68.733	73.219	79.653	77.861	77.711
1 Sterling Pound	124.785	140.365	140.111	124.453	122.281	122.574	128.960	133.254	125.944	132.104	130.221	119.757	112.347
1 EURO	89.853	104.930	106.702	98.829	97.007	96.160	102.157	104.980	101.394	105.277	101.994	100.408	109.482
100 Japanese Yen	55.237	66.217	66.399	62.924	60.010	58.855	61.082	62.248	63.064	70.030	81.201	81.810	86.065
1 SA Rand	9.015	9.668	9.493	7.736	8.135	8.226	8.210	9.117	8.937	8.792	7.920	7.465	8.268
USHS/KES	27.198	24.447	23.995	26.845	27.054	26.278	25.059	24.213	23.933	22.815	23.603	25.392	25.125
TSHS/KES	17.964	16.512	16.592	19.142	19.458	19.322	18.263	17.388	16.928	15.932	16.352	16.371	16.793

\* Mean of commercial banks buying and selling exchange rates prevailing at the end of the month

'Source: Kenya National Bureau of Statistics

**FIG 2: END OF MONTH MEAN EXCHANGE RATE OF KENYA SHILLINGS AGAINST MAJOR SELECTED CURRENCIES**



**Table 3: Interest Rates (%)**

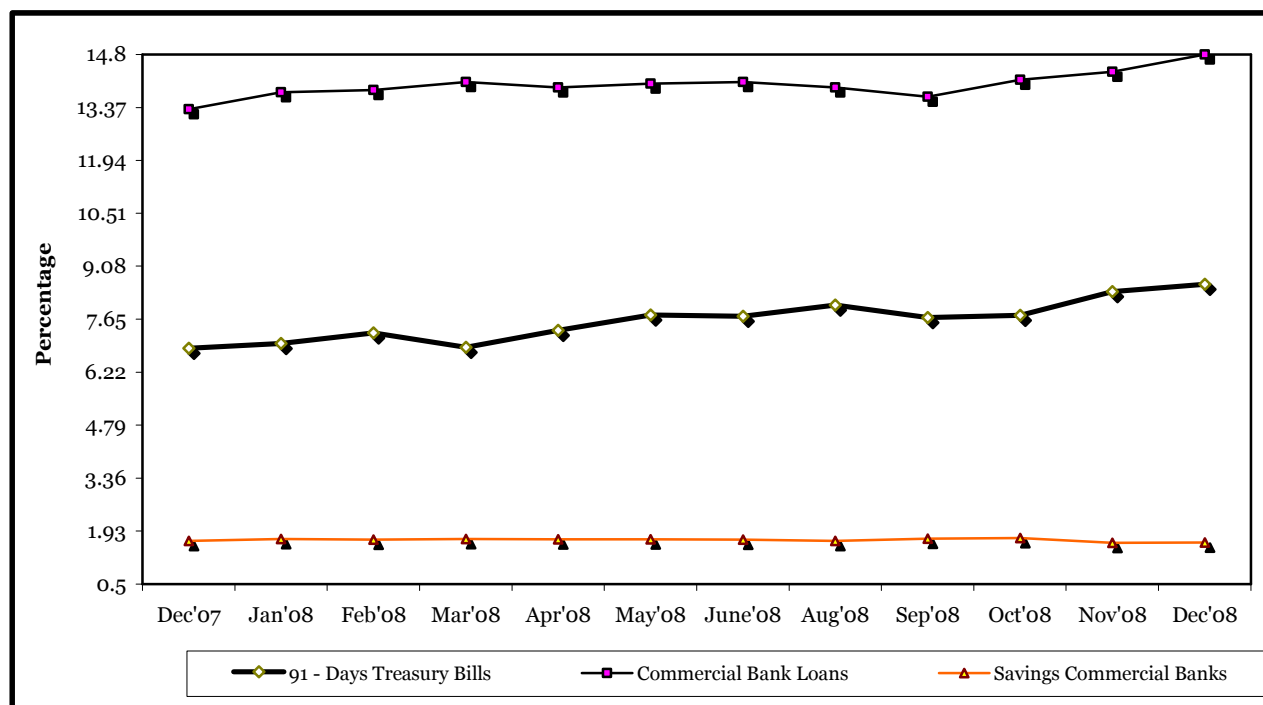
MONTHS	Average Yield Rates 91 - Days Treasury Bills	Rates for Commercial Banks Loans and Advances (Weighted Average)	Overdraft Rates	Inter - Bank Rates	Savings (Commercial Banks Rates)
<b>2007</b>					
October	7.55	13.24	13.29	7.65	1.64
November	7.52	13.39	13.43	6.50	1.65
December	6.87	13.32	12.96	7.05	1.67
<b>2008</b>					
January	6.99	13.78	13.41	7.61	1.72
February	7.28	13.84	13.26	7.21	1.70
March	6.89	14.06	13.48	6.35	1.72
April	7.35	13.91	13.46	6.70	1.71
May	7.76	14.01	13.53	7.72	1.71
June	7.73	14.06	13.30	7.77	1.70
July	8.03	13.90	13.46	8.06	1.67
August	8.02	13.66	13.11	6.93	1.68
September	7.70	13.66	13.43	6.70	1.73
October	7.75	14.12	13.91	6.81	1.74
November	8.39	14.33	13.85	6.84	1.61
December	8.59	14.80	14.40	6.68	1.62

Source : Central Bank of Kenya

- data not available

\* Provisional

**FIG 3: INTEREST RATES**



**TABLE 4: CAPITAL MARKETS – NAIROBI STOCK EXCHANGE**

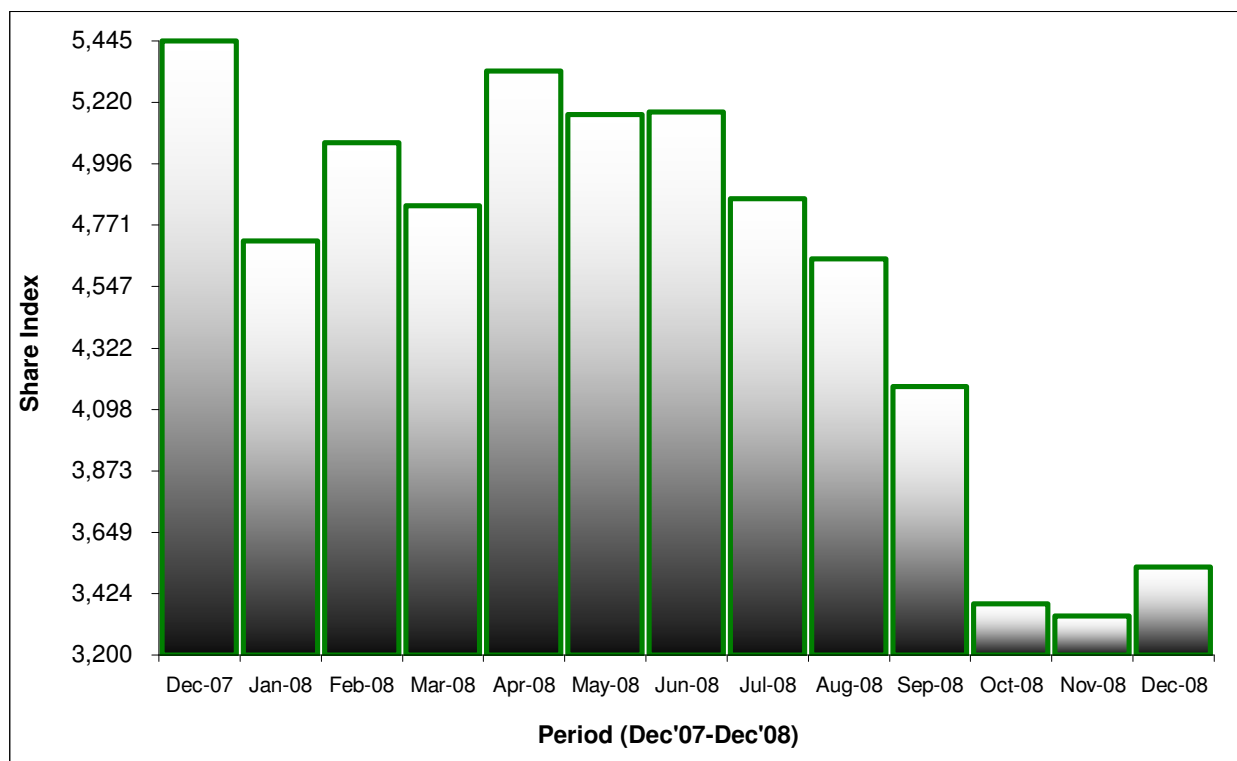
MONTH	NUMBER OF TRANSACTIONS	NUMBER OF SHARES ('000)	VALUE OF SHARES ('000 KShs)	SHARES INDEX Base Jan 1966=100
Dec-07	53,106	140,806	6,017,989	5,444.8
Jan-08	69,754	197,138	7,046,138	4,712.7
Feb-08	74,615	198,833	8,011,260	5,072.4
Mar-08	60,038	180,644	7,320,547	4,843.2
Apr-08	57,526	141,766	5,635,570	5,336.0
May-08	71,959	168,034	6,836,652	5,175.8
Jun-08	143,942	2,154,897	22,130,018	5,185.6
Jul-08	132,507	983,747	14,282,189	4,868.3
Aug-08	83,372	490,810	7,490,223	4,648.8
Sep-08	66,060	485,283	6,787,824	4,180.4
Oct-08	44,190	393,530	3,642,410	3,386.7
Nov-08	48,277	290,953	3,723,721	3,341.5
Dec-08	29,302	170,900	4,620,000	3,521.2

Source : Nairobi Stock Exchange

\*\* Provisional

\* End month

**FIG 4: NAIROBI STOCK EXCHANGE SHARES INDEX**



**TABLE 5 (a): MONEY SUPPLY**

KSh Million

As at end of	MONEY AND QUASI MONEY (M2)				BROAD MONEY (M3)	% CHANGE*** *
	MONEY (M1)*	QUASI - MONEY		TOTAL (M2)		
		(Commercial Banks)**	(NBFIs)			
<b>2007</b>						
August	352,317	265,706	11,025	629,048	730,511	2.37
September	349,774	270,440	10,927	631,141	733,329	0.39
October	350,741	275,024	11,877	637,642	739,663	0.86
November	360,486	274,171	11,888	646,545	745,268	0.76
December	373,310	281,635	11,930	666,875	777,596	4.34
<b>2008</b>						
January	378,042	293,665	10,557	682,264	801,248	3.04
February	378,872	303,175	10,316	692,363	810,207	1.12
March	380,141	307,142	9,859	697,142	811,214	0.12
April	436,622	302,408	12,978	752,008	864,105	6.52
May	395,158	304,077	11,995	711,230	839,239	-2.88
June	391,824	314,762	12,723	719,309	840,679	0.17
July	382,174	325,353	12,633	720,160	850,412	1.16
August	383,424	328,254	12,678	724,356	854,952	0.53
September	385,004	338,783	12,677	736,464	859,328	0.51
October	398,571	342,978	12,489	754,038	883,892	2.86
November	393,400	345,872	12,912	752,184	890,233	0.72
December	392,075	360,300	13,531	765,905	900,351	1.14

**Source : Central Bank of Kenya**

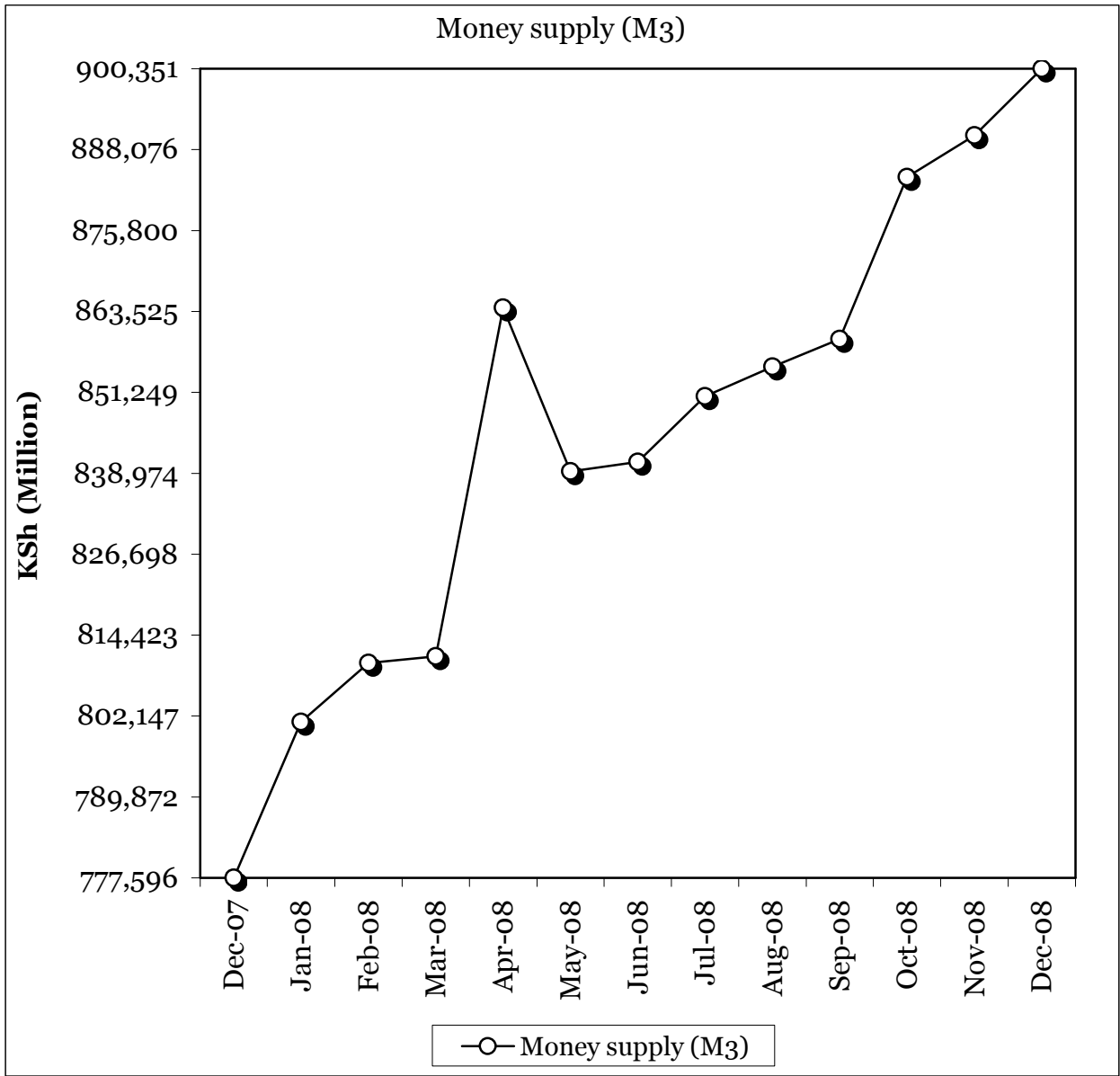
\* Currency in circulation less cash in banks plus all demand deposits except those of Central Government, Local Govt, Banks, non residents and foreign currency deposits.

\*\* All other deposits in commercial banks except those of Central Government.

\*\*\* Broad Money (M3) includes M2 and Quasi - Money supplied by Non Bank Financial Institutions

\*\*\*\* Compared with previous month.

FIG 5: MONEY SUPPLY (M3)

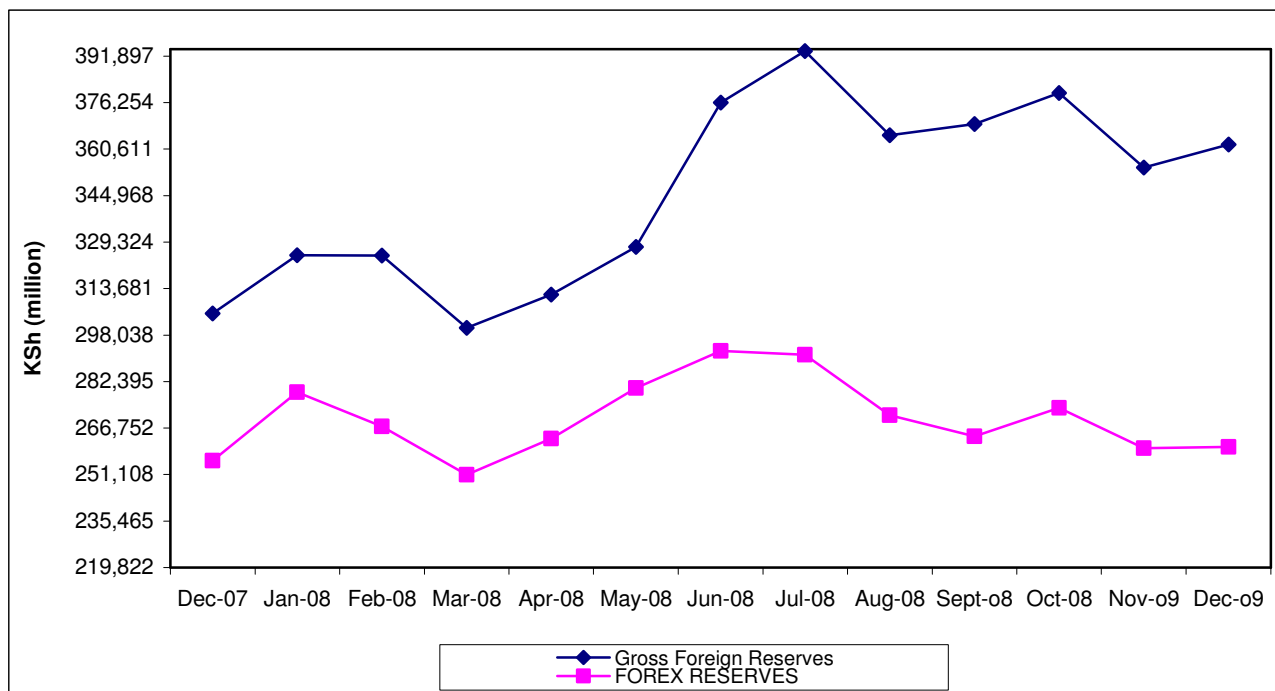


**TABLE 5b: FOREIGN EXCHANGE RESERVES**

MONTHS	CENTRAL MONETARY AUTHORITY			COMMERCIAL BANKS	GROSS TOTAL	NET FOREIGN EXCHANGE
	CENTRAL BANK	CENTRAL GOVERNMENT	TOTAL			
<b>KSh. Million</b>						
<b>2007</b>						
September	188,562	1,344	189,906	70,297	260,203	225,993
October	191,265	1,344	192,609	76,392	269,001	227,139
November	191,310	1,344	192,654	70,747	263,401	219,822
December	228,677	1,265	229,942	75,343	305,284	255,775
<b>2008</b>						
January	249,055	1,450	250,505	74,449	324,954	278,808
February	239,306	1,450	240,756	74,333	315,089	267,261
March	216,034	1,450	217,484	83,026	300,510	251,014
April	211,637	1,372	213,009	98,622	311,631	263,236
May	214,110	1,372	215,482	112,211	327,693	280,192
June	223,401	1,372	224,773	151,481	376,254	292,664
July	233,173	1,372	234,545	162,483	397,028	291,398
August	224,770	1,395	226,165	139,078	365,243	271,084
September	231,449	1,395	232,844	136,265	369,109	263,971
October	234,167	1,395	235,562	143,918	379,480	273,500
November	224,119	1,395	225,514	128,855	354,369	259,969
December	223,549	1,395	224,944	137,262	362,206	260,455

Source : Central Bank of Kenya

**FIG 6: FOREIGN EXCHANGE RESERVES**



**TABLE 6: COFFEE SALES AND PRICES**

Months	2007			2008***		
	QUANTITY (MT)	PRICE (\$ /kg)	PRICE (Ksh /kg)	QUANTITY (MT)	PRICE (\$ /kg)	PRICE (Ksh /kg)
January	4,670	2.88	201.48	2,344	2.89	203.63
February	5,064	3.03	211.04	4,899	3.12	220.19
March	6,839	2.99	207.62	6,117	3.09	193.98
April	6,324	2.67	182.91	6,374	2.72	169.14
May	6,991	2.47	166.41	3,179	2.34	144.93
June	5,451	2.18	145.61	-	-	-
July	4,669	2.11	141.77	1,957	2.64	177.50
August**	0	0	0	2,173	2.61	179.50
September	3,817	2.36	157.96	3,878	2.37	173.56
October	4,252	2.24	150.18			
November	2,895	2.21	142.15			
December	1,296	2.86	178.73			
<b>Annual</b>	<b>52,269</b>	<b>2.56</b>	<b>173.91</b>			

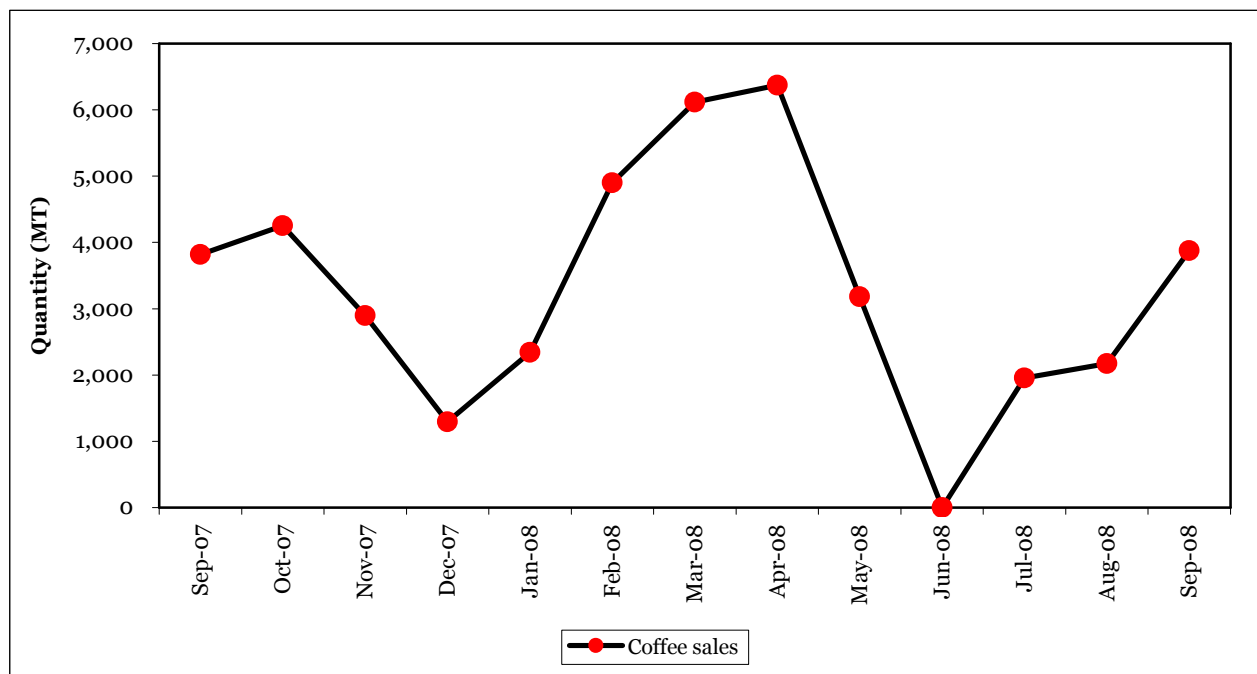
Source : Coffee Board of Kenya

\* Auction Price

\*\* Nairobi Coffee Exchange was in recess for most of August 2003, 2005,2006,2007&June 2008

\*\*\* Figures subject to revision

NB: MT denotes Metric Tonnes

**FIG.7: COFFEE SALES AT THE NAIROBI COFFEE EXCHANGE**

**TABLE 7: TEA PRODUCTION AND PRICES\***

Months	2007			2008**		
	QUANTITY	PRICE*	PRICE*	QUANTITY	PRICE*	PRICE*
	(MT)	(\$/kg)	(KShs/kg)	(MT)	(\$/kg)	(KShs/kg)
January	41,606	1.80	125.39	29,745	2.28	153.94
February	34,839	1.75	121.57	24,094	2.42	169.94
March	32,256	1.70	117.86	16,916	2.21	145.10
April	30,672	1.65	113.31	27,415	2.31	143.67
May	32,075	1.65	110.54	36,402	2.28	140.85
June	27,333	1.75	116.25	22,817	2.43	154.16
July	22,742	1.74	116.29	24,239	2.55	169.00
August	22,752	1.75	118.00	24,494	2.77	187.60
September	28,953	1.87	125.17	32,061	2.81	195.36
October	35,210	1.87	124.99	35,307	2.29	175.90
November	32,336	1.80	118.78	34,406	1.88	146.80
December	28,832	1.85	118.78	37,922	1.89	146.21
<b>Annual</b>	<b>369,605</b>	<b>1.77</b>	<b>119.24</b>	<b>345,816</b>	<b>2.32</b>	<b>160.41</b>

**Source: Tea Board of Kenya**

MT for Metric Tonnes

\*Auction prices

\*\*Figures subject to revision

**FIG.8: TEA PRODUCTION**



**Table 8(a): AVERAGE MONTHLY RETAIL PRICES FOR DRY MAIZE IN THE YEAR-2007**

Ksh. Per Kg.

MARKETS	Jan	Feb	March	April	May	JUNE	JULY	August	Sep	Oct	Nov	Dec
KIAMBU	17.39	16.67	16.67	14.29	16.67	11.90	11.90	11.90	9.52	9.52	9.52	-
LIMURU	15.00	15.00	15.00	15.00	15.00	15.00	16.18	16.12	16.00	15.00	15.00	-
THIKA	18.18	19.05	19.05	19.05	19.05	18.18	19.05	18.18	18.18	18.18	18.18	-
GATUNDU	18.34	16.67	14.29	16.67	15.78	14.29	10.00	17.50	-	19.05	-	-
MUTHITHI	11.90	11.90	10.71	9.52	10.24	10.72	13.33	-	-	-	-	-
MUKUYU	17.55	15.79	15.79	15.00	19.05	15.79	12.50	12.50	-	-	-	14.29
KIRIAINI	16.67	16.67	16.67	16.67	14.29	14.29	14.29	14.29	14.29	-	-	14.29
ENGINEER	18.00	16.67	16.25	15.00	16.67	20.00	18.63	15.00	15.00	15.00	15.00	-
NYERI	19.05	16.67	16.67	14.29	14.29	19.05	19.05	14.29	14.29	14.29	-	-
ENDARASHA	16.67	17.86	19.05	20.00	19.05	-	-	-	-	-	-	-
KARATINA	15.91	16.29	13.64	13.33	14.29	17.50	13.33	14.29	15.00	15.00	15.00	-
GAKINDU	16.67	17.50	17.50	14.29	17.50	12.50	14.29	17.50	17.50	14.29	14.29	-
NANYUKI	20.00	20.00	20.00	20.00	20.00	20.00	17.00	17.00	20.00	20.00	20.00	-
NYAHURURU	17.50	15.95	14.59	12.00	12.00	22.50	11.90	14.29	-	-	-	-
MARIAKANI	20.00	20.00	18.00	20.00	18.00	18.00	18.00	17.00	17.00	17.00	17.00	18.00
KALOLENI	20.00	20.00	17.00	17.00	17.00	18.00	18.00	17.00	17.00	17.00	14.00	18.00
MALINDI	20.00	17.21	20.00	-	20.00	20.00	20.00	20.00	-	-	-	-
KIBAUNI KILIFI	21.00	20.00	18.00	18.00	17.00	16.50	17.00	17.00	17.00	17.00	-	18.00
UKUNDA	35.00	35.00	38.00	35.00	35.00	30.00	25.00	25.00	-	-	-	-
WUNDANYI	-	-	14.00	14.00	13.00	-	-	-	-	-	-	-
MWEMBE TAYARI	20.00	20.00	23.67	30.00	20.00	20.00	20.00	18.00	-	-	-	-
SEGA	20.00	20.00	20.00	22.00	20.00	-	-	-	-	-	-	-
KONGOWEA	15.00	15.00	-	15.00	14.00	14.50	14.00	-	-	-	-	-
GARSEN	-	20.00	25.00	-	-	-	20.00	20.00	25.00	-	-	-
BURA TANA	20.00	20.00	20.00	40.00	20.00	-	-	-	-	-	-	-
RUNYENJES	17.50	17.50	15.00	15.00	15.00	12.50	10.00	12.50	12.50	12.50	15.00	12.50
EMBU TOWN	17.50	17.50	15.00	12.50	12.50	12.00	12.50	12.50	12.50	12.50	15.00	15.00
SIKAGO	20.00	17.50	12.50	12.50	12.50	-	11.75	11.50	11.50	15.00	15.00	15.00
MWINGI	15.00	16.00	15.00	8.00	-	15.00	15.00	10.00	15.00	-	-	-
MIGGWAINI	17.00	16.00	7.27	10.00	10.00	10.00	12.00	12.00	-	12.00	13.00	-
MACHAKOS TOWN	18.18	-	12.00	12.00	5.71	10.00	10.00	12.00	12.00	13.00	-	-
TALA	12.00	9.77	9.38	9.50	10.00	9.52	9.00	20.00	10.00	10.00	-	-
MAUA	-	25.00	16.25	12.50	15.00	13.75	12.50	-	-	-	-	-
KIANJAI	17.78	17.78	10.00	12.50	11.11	11.11	8.89	-	-	-	-	-
GAKROMERE	16.00	13.64	8.00	9.09	9.09	10.91	9.09	9.09	9.09	12.00	11.82	11.82
WOTE	17.00	15.00	14.00	11.00	11.00	12.00	12.00	12.00	14.00	14.00	-	17.00
GARISA TOWN	29.63	16.67	16.67	16.67	16.67	16.67	16.67	-	15.00	-	-	-
DARAJA MBILI	13.33	14.29	13.64	14.29	14.29	13.64	12.83	11.36	13.33	14.29	9.52	17.62
KIBIRIGO	16.67	-	-	-	-	16.67	11.90	-	13.33	-	-	-
NYANGUSU	14.29	9.11	10.87	11.90	13.10	10.04	10.87	11.90	9.52	14.29	11.90	13.33
RIOHANDA	13.33	-	-	-	22.62	-	-	16.67	-	-	-	-
NYABITE	15.48	-	-	-	14.29	-	-	14.29	-	-	-	-
MOGONGA	12.38	10.87	10.43	11.90	12.38	13.33	11.74	9.52	9.52	11.90	15.00	14.29
NYAMACHE	14.29	12.10	10.00	14.29	11.90	11.56	10.87	11.90	11.90	-	12.38	14.29
KIBUYE	16.67	14.09	14.32	15.71	-	-	-	-	-	-	-	-
AHERO	-	-	-	-	-	-	-	-	-	-	-	16.67
KIBOSWA	16.19	15.71	14.09	15.24	-	-	-	-	-	-	-	-
SONDU	14.55	13.64	13.64	-	-	-	-	-	-	-	16.67	16.67
BONDO	15.00	15.40	17.50	17.50	14.07	15.00	15.00	16.50	16.50	16.50	16.50	-
OYUGIS	12.38	13.33	-	-	16.19	-	15.71	-	-	-	-	-
KEHACHA	15.91	13.64	-	-	-	-	-	-	-	-	-	-
KABARNET	15.00	-	15.00	15.00	15.56	15.00	-	-	-	-	-	-
NAKURU TWON	22.22	22.22	22.22	22.22	22.22	22.22	22.22	22.22	22.22	22.22	22.22	22.22
KAPSABET	13.04	13.04	13.04	14.29	15.22	15.22	16.67	-	-	-	-	-
KITALE	-	17.50	16.50	14.29	15.00	14.76	17.50	17.50	17.50	-	-	-
ELDOROT	13.33	13.18	13.64	15.24	18.50	17.50	19.00	17.50	14.00	15.00	14.00	12.50
BURN FOREST	-	10.40	13.46	16.67	11.00	0.50	20.00	13.50	12.80	14.00	14.00	12.00
TURBO	11.43	11.15	10.00	11.43	11.90	17.62	14.00	17.20	16.80	12.00	12.00	-
KIPKAREN	12.86	12.03	12.00	15.00	16.50	17.50	17.50	17.50	16.50	10.40	13.95	10.80
ITEN	11.90	25.00	26.25	11.90	-	-	-	-	20.00	17.50	-	-
KAJIADO TOWN	20.00	20.00	-	20.00	20.00	20.00	20.00	20.00	25.00	20.00	25.00	-
KAPKATENY	12.52	13.67	13.56	14.29	17.14	17.14	17.14	17.62	14.29	11.90	11.90	-
BUNGOMA TOWN	14.29	13.97	13.64	15.24	13.64	-	-	-	-	14.55	13.64	14.29
KIMILILI	13.33	13.67	12.85	14.29	-	15.71	16.67	15.71	16.67	11.90	13.33	14.29
KAPSOKWONY	13.10	13.34	14.04	15.24	18.10	18.10	17.14	18.10	14.29	13.33	14.29	12.38
BUTERE	-	-	14.70	14.55	15.91	16.52	15.71	-	-	-	-	-
KAKAMEGA	13.97	13.97	13.64	15.24	15.24	16.29	15.91	13.64	13.64	12.73	13.64	13.64
MUMIAS	-	-	14.69	14.65	15.71	16.67	17.00	-	-	-	-	-
MUNDETA	14.29	14.29	14.29	14.29	15.24	15.24	15.24	14.29	14.29	-	15.24	14.29
CHEPTULA	14.29	14.29	14.29	15.24	15.24	-	14.29	13.33	-	15.24	14.29	14.29
Mbale	14.29	13.64	13.64	14.29	-	15.24	15.24	14.29	14.55	14.55	13.64	14.29
KAWANGWARE	22.00	20.00	20.00	20.00	30.00	21.05	19.05	20.00	19.05	18.10	18.28	20.00
BURMA	20.00	20.00	22.00	22.00	22.00	20.00	20.00	20.00	20.00	20.00	22.00	25.00
KIKOMBA	19.05	19.00	20.00	19.00	18.18	20.00	18.18	20.00	19.05	17.14	20.00	20.45
KANGEMI	19.49	20.50	19.05	19.00	20.00	20.00	20.00	20.00	18.18	19.05	20.00	20.45
KOROKOCHO	17.95	19.50	20.00	19.00	20.00	18.18	18.18	19.00	16.36	19.50	19.05	20.00
TOI	21.00	20.10	17.95	17.50	29.21	17.39	16.67	16.67	15.00	15.38	17.14	18.18
<b>Overall Average Prices</b>	<b>16.92</b>	<b>16.60</b>	<b>15.88</b>	<b>16.00</b>	<b>16.32</b>	<b>15.84</b>	<b>15.48</b>	<b>15.79</b>	<b>15.45</b>	<b>15.09</b>	<b>15.43</b>	<b>15.93</b>

- : Data not available

\*\* Provisional results

**Table 8(b): Average Monthly Retail Prices for Dry Maize in the Year 2008**

Markets	KSh.per Kg						
	January	February	March	April	May	June	July
KIAMBU	20.0	20.0	20.0	19.2	25.0	30.0	26.3
LIMURU	17.5	17.5	17.5	22.5	25.0	26.3	-
THIKA	19.7	21.9	16.7	19.1	18.2	-	-
GATUNDU	17.9	23.8	23.8	19.1	19.1	-	-
MUTHITHI	19.1	14.6	-	21.1	24.9	24.0	-
MUKUYU	17.5	18.4	17.7	20.3	24.4	27.5	28.6
KIRIAINI	16.7	16.7	19.1	19.1	25.4	28.6	31.0
ENGINEER	15.0	-	15.9	-	-	-	-
NANYUKI	18.2	18.5	20.0	22.5	24.0	24.4	22.5
NYAHURURU	20.0	20.0	17.5	17.7	20.0	20.0	22.5
MARIAKANI	20.0	20.0	20.0	23.5	25.0	25.0	25.0
KALOLENI	20.0	20.0	20.7	24.5	25.0	25.0	25.0
MALINDI	27.8	27.8	27.8	26.9	28.4	30.0	-
KIBAUNI KILIFI	20.0	20.0	20.7	25.0	25.0	25.0	27.0
UKUNDA	15.0	-	-	-	-	-	-
MWEMBE TAYARI	25.0	20.0	-	-	-	-	-
SEGA	24.0	-	-	-	-	-	-
KONGOWEA	25.0	20.0	-	-	-	-	-
GARSEN	25.0	22.5	20.0	23.3	25.0	30.0	-
RUNYENJES	15.0	15.0	19.2	20.0	20.0	-	-
EMBU TOWN	17.5	18.8	15.0	20.0	20.0	-	-
SIKAGO	17.5	17.5	15.0	17.5	18.5	23.8	-
MWINGI	16.0	16.0	16.0	16.5	19.0	-	-
MIGGWAINI	-	-	14.0	14.0	17.8	21.0	-
KALUNDU	15.0	16.0	17.0	-	-	-	-
MACHAKOS TOWN	16.0	17.0	17.0	-	-	-	-
TALA	16.0	18.0	17.0	15.7	17.1	-	-
MAUA	-	-	21.3	25.0	25.0	-	-
KIANJAI	-	-	16.7	19.5	-	-	-
GAKOROMERE	13.6	16.0	12.7	13.6	15.1	-	18.2
WOTE	17.0	17.0	18.0	18.0	20.0	22.0	-
GARISA TOWN	-	-	25.0	-	30.3	-	-
DARAJA MBILI	17.3	20.5	18.6	20.0	23.0	24.5	22.7
KIBIRIGO	-	20.5	20.5	-	-	-	-
NYANGUSU	14.3	-	16.7	-	-	31.0	-
RIOHANDA	-	16.8	21.4	-	-	-	-
NYABITE	-	16.0	20.5	-	-	-	-
MOGONGA	14.3	14.3	-	-	-	31.0	-
NYAMACHE	16.7	17.1	17.5	-	-	31.0	-
KIBUYE	-	17.3	18.2	21.4	-	-	-
AHERO	23.8	22.7	-	-	-	-	-
KIBOSWA	-	19.1	20.5	-	-	-	-
SONDU	20.5	20.5	-	-	-	-	-
BONDO	-	20.0	20.0	30.0	25.0	25.5	27.5
SIAYA	22.7	16.4	19.6	-	-	-	-
NGIYA	18.2	22.7	17.3	-	-	-	-
UNGUNJA	22.7	15.2	17.3	18.2	-	-	-
OYUGIS	-	18.6	20.0	-	-	-	-
KEHACHA	-	17.5	20.0	21.2	24.4	25.0	-
KABARNET	15.0	15.0	15.0	17.2	22.8	25.0	25.0
NAKURU TWON	24.2	21.7	22.2	22.2	22.2	-	-
KAPSABET	-	19.1	19.1	25.0	23.9	25.5	25.7
KITALE	-	17.5	17.5	25.0	26.7	24.1	25.8
ELDORET	20.0	15.4	15.0	15.5	19.4	22.0	22.0
BURN FOREST	12.5	15.0	15.0	-	-	-	-
TURBO	13.3	13.4	25.0	16.7	18.5	20.7	20.7
KIPKAREN	15.0	16.0	16.1	25.0	27.0	26.3	29.4
KAJIADO TOWN	25.0	20.0	-	25.0	36.3	21.7	25.0
BUNGOMA TOWN	16.7	16.7	16.7	16.6	20.4	26.0	24.6
KIMILILI	-	-	-	16.2	21.8	27.7	27.5
KAPSOKWONY	-	16.2	17.5	-	-	-	-
BUTERE	-	23.6	17.4	23.9	23.1	24.3	-
KAKAMEGA	20.5	18.2	-	-	-	-	-
MUMIAS	-	-	28.6	26.2	23.1	23.9	-
MUNDETA	19.1	16.7	16.7	19.1	26.2	-	-
CHEPTULA	23.8	16.7	16.7	21.4	-	-	-
Mbale	23.8	16.7	-	-	-	-	-
KAWANGWARE	21.0	22.0	25.0	46.5	30.0	28.6	28.6
BURMA	25.0	25.0	25.0	32.5	25.0	25.0	33.3
KIKOMBA	21.5	22.0	22.0	23.5	26.3	35.0	35.0
KANGEMI	22.0	22.5	23.0	23.0	27.3	30.0	30.0
KOROKOCHO	20.0	20.0	21.5	23.0	21.1	26.2	38.9
TOI	21.4	21.4	23.8	23.8	26.2	28.6	28.6
<b>Overall Average Prices</b>	<b>19.5</b>	<b>18.7</b>	<b>19.1</b>	<b>21.0</b>	<b>22.9</b>	<b>25.4</b>	<b>25.8</b>

- data not available

**Table 8(c): Average Monthly Retail Prices for Dry Beans Prices (2007)**

MARKETS	Ksh. Per Kg.											
	Jan	Feb	Mar	April	May	June	July	Aug	Sep	Oct	Nov	Dec
KIAMBU	30.95	29.76	28.57	28.57	28.57	33.33	38.10	38.10	35.71	38.10	38.10	-
LIMURU	40.00	35.00	45.00	40.00	37.50	40.00	35.63	26.27	35.00	35.00	50.00	-
THIKA	36.36	40.00	38.10	38.10	38.10	40.00	36.36	36.36	37.50	42.86	45.00	-
GATUNDU	38.10	35.71	38.10	35.71	38.10	35.71	38.10	38.10	38.10	38.10	-	-
MUTHITHI	34.52	38.10	38.10	40.48	38.10	38.10	35.71	-	-	-	-	-
MUKUYU	34.96	33.33	38.10	38.10	34.17	33.33	33.33	33.33	-	-	-	38.10
KIRIAINI	42.86	40.91	42.86	42.86	42.86	40.48	40.48	40.48	40.48	-	-	40.91
ENGINEER	50.00	50.00	50.00	50.00	54.55	50.00	39.50	45.00	40.00	40.00	45.00	-
NYERI	42.86	40.48	41.86	42.86	42.86	47.62	47.62	38.10	47.62	47.62	-	-
ENDARASHA	47.62	47.62	47.62	60.00	57.14	-	-	-	-	-	-	-
KARATINA	40.91	45.45	31.82	33.33	40.00	47.62	38.10	40.48	60.00	50.00	50.00	-
GAKINDU	40.00	38.10	38.10	40.00	42.86	42.86	40.00	38.10	38.10	42.50	45.00	-
NANYUKI	40.00	38.18	36.36	38.89	44.44	44.44	40.00	40.00	40.00	31.82	44.44	-
NYAHURURU	32.00	40.02	40.91	41.67	40.00	40.00	42.86	42.86	-	-	-	-
MARIAKANI	40.00	40.00	40.00	38.10	40.00	40.00	40.00	40.00	40.00	40.00	40.00	40.00
KALOLENI	42.50	45.00	40.00	40.00	40.00	40.00	40.00	40.00	40.00	40.00	40.00	45.00
MALINDI	50.00	40.00	40.00	-	40.00	40.00	40.00	40.00	-	-	-	-
KIBAJUNI KILIFI	40.00	-	40.00	40.00	40.00	40.00	40.00	40.00	40.00	40.00	-	45.00
UKUNDA	46.00	48.00	48.00	48.00	48.00	48.67	47.50	50.00	-	-	-	-
WUNDANYI	-	-	50.00	50.00	50.00	-	-	-	-	-	-	-
MWEMBE TAYARI	38.00	41.00	42.00	42.00	42.00	40.00	42.00	42.00	-	-	-	-
MACKINON	35.00	35.00	-	-	-	-	-	-	-	-	-	-
SEGA	45.00	45.00	40.00	42.00	45.00	-	-	-	-	-	-	-
KONGOWEA	35.00	35.00	36.00	36.00	38.00	40.00	38.00	-	-	-	-	-
HOLA	40.00	40.00	55.00	45.00	-	-	-	-	-	-	-	-
GARSEN	-	40.00	40.00	40.00	-	-	50.00	40.00	40.00	-	-	-
BURA TANA	50.00	50.00	45.00	40.00	40.00	-	-	-	-	-	-	-
RUNYENJES	37.50	35.00	37.50	35.00	35.00	30.00	30.00	30.00	35.00	40.00	37.50	37.50
EMBU TOWN	37.50	35.00	30.00	37.50	42.50	33.33	30.00	35.00	32.50	40.00	40.00	50.00
SIKAGO	30.00	30.00	35.00	30.00	27.50	-	30.00	30.00	27.50	45.00	45.00	50.00
MWINGI	35.00	35.00	35.00	20.00	-	35.00	35.00	25.00	35.00	-	-	-
MIGGWAINI	27.27	22.73	22.73	40.00	25.00	25.00	25.00	25.00	-	40.00	45.00	-
MACHAKOS TOWN	38.89	-	35.00	36.84	40.00	40.00	35.00	40.00	40.00	40.00	-	-
TALA	35.00	24.44	25.81	27.14	28.57	40.00	38.10	33.33	38.00	38.00	-	-
MAUA	-	37.50	35.00	31.25	33.75	30.00	43.75	-	-	-	-	-
KIANJAI	30.00	27.78	27.78	31.25	24.44	24.44	35.56	-	-	-	-	-
GAKOROMERE	35.00	30.46	36.36	36.36	36.36	36.36	36.36	36.36	36.36	36.36	40.00	40.00
WOTE	35.00	35.00	35.00	40.00	40.00	35.00	40.00	42.00	42.00	45.00	-	45.00
GARISA TOWN	45.75	47.06	47.06	47.06	47.06	44.44	47.06	-	47.06	-	-	-
DARAJA MBILI	28.57	27.27	21.82	33.33	33.33	30.43	27.72	34.09	38.10	33.33	30.95	38.10
KIBIRIGO	32.67	29.55	-	-	-	38.10	38.10	-	-	-	-	-
KEROKA	-	29.55	-	-	-	-	-	-	-	-	-	-
NYANGUSU	35.00	32.31	-	35.71	21.73	22.82	19.57	23.81	23.81	23.81	28.57	26.19
RIOCHANDA	21.45	-	-	-	28.57	-	-	30.95	-	-	-	-
NYABITE	36.91	-	-	-	33.33	-	-	33.33	-	-	-	-
MOGONGA	33.33	24.00	25.00	28.57	21.43	23.16	23.00	-	30.95	28.57	30.95	30.95
NYAMACHE	30.95	26.79	28.00	-	33.33	30.20	28.13	26.19	30.95	-	28.57	28.57
KIBUYE	38.10	36.36	39.77	45.24	-	-	-	-	-	-	-	-
AHERO	-	-	-	-	-	-	-	-	-	-	47.62	47.62
KIBOSWA	40.48	37.73	41.76	52.38	-	-	-	-	-	-	-	-
SONDU	33.33	33.33	30.95	-	-	-	-	-	-	-	42.86	47.62
BONDO	45.45	46.36	46.36	50.00	34.10	45.45	45.45	54.55	59.09	54.55	54.55	-
OYUGIS	35.71	35.57	-	-	40.48	35.71	35.71	-	-	-	-	-
KEHACHA	45.00	50.00	-	-	-	-	-	-	-	-	-	-
KABARNET	30.00	-	40.00	40.00	40.00	40.00	-	-	-	-	-	-
NAKURU TWON	33.33	33.33	44.44	38.89	33.33	44.44	44.44	44.44	33.33	33.33	33.33	30.00
KAPSABET	44.99	39.07	37.35	54.55	39.13	39.13	19.05	-	-	-	-	-
KITALE	-	33.33	38.10	47.62	38.10	38.10	34.09	33.33	28.57	-	-	-
ELDOROT	38.48	36.36	36.36	31.82	40.91	38.10	40.91	45.45	40.00	45.00	45.45	45.00
BURN FOREST	35.42	32.00	29.63	-	47.62	47.62	50.00	45.45	36.36	36.36	40.91	40.91
TURBO	36.60	34.42	30.00	35.71	38.10	33.33	30.00	22.73	30.00	-	34.09	-
KIPKAREN	33.33	32.58	36.36	38.10	36.36	36.61	31.82	32.50	32.50	36.36	35.68	36.36
ITEN	38.10	38.10	38.10	-	-	-	-	-	50.00	35.00	-	-
KAJIADO TOWN	50.00	45.00	-	40.00	44.44	44.44	44.81	40.00	40.00	20.00	60.00	-
BUNGOMA TOWN	38.10	36.76	40.00	36.36	47.62	-	-	-	-	36.36	36.36	36.36
KIMILILI	28.57	30.93	30.84	30.95	-	33.33	30.00	26.19	28.57	33.33	36.36	40.91
KAPSOKWONY	32.86	33.99	36.07	38.10	38.10	38.10	38.10	34.85	-	33.33	36.36	36.36
BUTERE	-	-	29.55	35.57	34.09	30.43	33.33	-	-	-	-	-
KAKAMEGA	34.90	37.23	36.36	42.86	38.10	37.23	29.55	40.91	45.45	47.73	45.45	45.45
MUMIAS	-	-	37.37	36.23	31.41	33.33	-	-	-	-	-	-
MUNDETA	39.13	39.13	38.10	38.10	42.86	38.10	38.10	38.10	38.10	-	38.10	52.38
CHEPTULA	39.13	34.78	38.10	38.10	35.71	-	38.10	38.10	-	47.62	40.48	47.62
Mbale	41.30	41.30	39.13	42.86	-	45.24	40.91	45.45	45.45	45.45	54.55	54.55
KAWANGWARE	42.11	40.00	40.00	40.00	30.00	38.10	40.00	40.00	45.00	43.64	45.00	20.45
BURMA	45.00	42.00	80.00	40.00	40.00	40.00	40.00	40.00	40.00	42.00	42.00	45.00
KIKOMBA	41.03	40.00	40.00	38.10	42.11	40.00	39.05	38.10	36.36	38.10	40.00	40.00
KANGEMI	42.50	40.82	40.20	40.00	40.00	38.10	41.00	40.00	40.91	40.91	40.48	45.24
KOROKOCHO	40.00	40.00	40.00	40.00	38.10	39.05	40.00	40.00	38.10	40.00	40.00	40.00
TOI	40.82	40.00	40.40	40.00	40.00	38.10	38.28	38.10	40.00	42.86	21.43	45.00
<b>Overall Average Prices</b>	<b>38.06</b>	<b>37.17</b>	<b>38.32</b>	<b>39.27</b>	<b>38.23</b>	<b>37.87</b>	<b>37.19</b>	<b>37.22</b>	<b>38.64</b>	<b>39.24</b>	<b>40.88</b>	<b>40.97</b>

- : Data not available

**Table 8(d): Average Monthly Retail Prices for Dry Beans Prices (2008)**

Markets	January	February	March	April	May	June	July
KIAMBU	38.10	35.71	35.50	60.00	71.67	75.00	57.50
LIMURU	75.00	60.00	60.00	70.00	75.00	70.00	-
THIKA	55.00	54.55	54.55	45.45	60.00	-	-
GATUNDU	39.30	45.24	42.86	47.62	38.10	-	-
MUTHITHI	57.14	52.38	-	55.36	61.81	56.67	-
MUKUYU	38.10	38.10	56.06	59.09	59.14	59.09	59.09
KIRIAINI	47.83	47.83	63.64	-	60.87	60.87	66.67
ENGINEER	45.00	-	57.14	-	-	-	-
NANYUKI	40.00	42.50	50.00	65.00	46.67	69.82	70.83
NYAHURURU	39.13	50.00	56.19	63.75	67.50	38.34	60.00
MARIAKANI	50.00	60.00	60.00	60.00	63.33	70.00	70.00
KALOLENI	50.00	60.00	60.00	60.00	63.33	70.00	70.00
MALINDI	70.59	75.00	68.18	72.22	76.38	78.16	-
KIBAUNI KILIFI	60.00	60.00	65.00	53.33	66.67	70.00	68.00
UKUNDA	50.00	-	-	-	-	-	-
MWEMBE TAYARI	60.00	48.00	-	-	-	-	-
SEGA	55.00	-	-	-	-	-	-
KONGOWEA	70.00	55.00	-	-	-	-	-
GARSEN	50.00	55.00	60.00	60.00	60.00	70.00	-
RUNYENJES	45.00	41.25	68.81	55.00	57.50	-	-
EMBU TOWN	40.00	40.00	50.00	60.00	60.00	50.00	-
SIAKAGO	40.00	42.50	50.00	55.00	53.60	63.64	-
MWINGI	40.00	40.00	50.00	60.00	50.00	-	-
MIGGWAINI	-	-	40.00	55.00	55.00	55.00	-
KALUNDU	50.00	58.00	70.00	-	-	-	-
MACHAKOS TOWN	55.00	45.00	45.00	-	-	-	-
TALA	27.00	40.00	40.00	55.67	57.14	-	-
MAUA	-	-	62.50	67.81	62.50	-	-
KIANJAI	-	-	50.00	56.67	-	-	-
GAKROMERE	36.36	40.91	55.00	50.00	55.46	-	60.61
WOTE	50.00	52.50	60.00	68.00	64.50	61.50	-
GARISA TOWN	-	-	66.67	-	70.84	-	-
DARAJA MBILI	40.91	54.55	46.43	61.36	48.90	39.06	41.07
KIBIRIGO	-	45.45	47.62	-	-	-	-
NYANGUSU	28.57	-	42.86	-	-	54.55	-
RIOCHANDA	-	46.15	54.55	-	-	-	-
NYABITE	-	42.31	54.55	-	-	-	-
MOGONGA	38.10	36.36	-	-	-	54.55	-
NYAMACHE	27.27	47.62	40.18	-	-	52.27	-
KIBUYE	-	65.91	68.18	68.18	-	-	-
AHERO	61.90	61.90	-	-	-	-	-
KIBOSWA	-	77.27	76.19	-	-	-	-
SONDU	52.38	52.38	-	-	-	-	-
BONDO	-	85.00	85.00	69.17	85.00	87.50	80.00
SIAYA	54.55	53.03	90.91	-	-	-	-
NGIYA	47.17	54.55	68.18	-	-	-	-
UNGUNJA	45.45	52.27	51.14	72.73	-	-	-
OYUGIS	-	66.38	71.43	-	-	-	-
KEHACHA	-	54.55	68.18	66.67	59.09	54.55	-
KABARNET	50.00	50.00	50.00	59.59	72.32	75.00	75.00
NAKURU TWON	52.22	38.89	38.89	51.11	36.11	38.89	-
KAPSABET	-	71.43	68.18	72.73	71.02	60.87	46.52
KITALE	-	54.05	54.55	68.18	74.36	68.19	49.51
ELDORET	59.09	43.19	68.18	75.21	78.00	63.00	62.50
BURN FOREST	68.18	68.18	60.91	-	-	-	-
TURBO	42.50	53.75	-	70.00	73.75	67.00	53.00
KIPKAREN	45.45	54.55	54.55	68.18	62.50	60.60	36.97
KAJIADO TOWN	60.00	70.00	80.00	60.00	67.50	66.67	50.00
BUNGOMA TOWN	47.62	61.90	68.18	-	60.59	64.77	65.24
KIMILILI	-	-	-	46.67	67.14	66.67	80.00
KAPSOKWONY	-	40.48	47.01	-	-	-	-
BUTERE	55.80	62.29	50.79	73.91	70.51	53.02	-
KAKAMEGA	54.55	68.18	-	-	-	-	-
MUMIAS	-	-	-	70.46	70.10	58.37	-
MUNDETA	71.43	71.43	71.43	71.43	61.90	-	-
CHEPTULA	65.04	71.43	71.43	71.43	-	71.43	-
Mbale	-	65.22	-	-	-	-	-
KAWANGWARE	45.00	50.00	60.00	-	70.00	72.73	76.19
BURMA	45.00	50.00	50.00	60.00	70.00	80.00	80.00
KIKOMBA	48.00	50.00	60.00	65.00	80.00	75.00	83.33
KANGEMI	45.00	55.00	65.00	70.00	75.00	80.00	80.00
KOROKOCHO	43.50	45.00	50.00	62.50	62.50	72.73	72.73
TOI	47.62	50.00	63.64	72.73	76.19	76.19	76.19
<b>Overall Average Prices</b>	<b>50.11</b>	<b>53.15</b>	<b>57.23</b>	<b>62.05</b>	<b>65.08</b>	<b>63.84</b>	<b>60.35</b>

**Table 9: Export of Coffee, Tea and Horticultural Produce**

Month	COFFEE *		TEA		HORTICULTURE	
	QUANTITY	VALUE	QUANTITY	VALUE	QUANTITY	VALUE
	(MT)	(KSh. Million)	(MT)	(KSh. Million)	(MT)	(KSh. Million)
Oct-07	4,698.5	875.8	25,858.0	3,410.1	18,727	5,489.6
Nov-07	3,665.5	689.1	31,356.6	3,979.6	18,249	6,773.7
Dec-07	3,248.1	630.3	20,102.0	2,433.7	16,881	5,482.9
Jan-08	2,698.8	558.4	28,790.2	4,054.6	16,553	6,684
Feb-08	3,270.3	812.7	32,723.0	5,303.6	18,901	9,720
Mar-08	3,989.2	1,071.0	27,943.7	4,308.3	18,927	6,538
Apr-08	4,611.3	1,107.7	40,724.4	5,464.0	17,969	4,257
May-08	4,820.5	1,128.1	30,518.6	4,525.4	16,940	4,052
Jun-08	3,602.7	838.6	31,644.4	4,917.2	15,312	3,480
Jul-08	3,158.5	769.2	40,370.6	6,667.2	15,262	3,882
Aug-08	3,094.6	759.0	33,043.3	5,811.1	13,996	3,997
Sep-08	3,348.0	805.0	24,829.6	4,986.1	14,928	3,524
Oct-08	2,774.5	718.2	31,955.8	6,400.4	15,579	3,968
Nov-08	3,421.2	909.6	28,369.5	5,140.0	14,740	4,029
Dec-08	-	-	-	-	14,027	4,040

**Source: Kenya Revenue Authority**

- Figures not available

\*Unroasted Coffee

\*\* Provisional

**Table 10: Monthly Exports of Horticultural Products**

Months	CUT FLOWERS				FRUITS				VEGETABLES			
	2007**		2008**		2007**		2008**		2007**		2008**	
	QUANTITY (MT)	VALUE (KSh. Million)	QUANTITY (MT)	VALUE (KSh. Million)	QUANTITY (MT)	VALUE (KSh. Million)	QUANTITY (MT)	VALUE (KSh. Million)	QUANTITY (MT)	VALUE (KSh. Million)	QUANTITY (MT)	VALUE (KSh. Million)
January	7,380	3,015.93	8,494.94	5,288.07	1,224.93	195.16	533.40	63.05	5,889.41	1,415.57	7,524.88	1,332.79
February*	7,908	2,853.19	10,178.52	6,806.08	1,753.77	182.45	1,431.75	111.22	4,941.00	2,988.19	7,290.64	2,802.23
March	9,016	5,534.80	9,116.38	4,836.41	1,798.53	198.26	2,476.80	203.31	5,293.65	1,395.41	7,334.14	1,498.72
April	7,944	2,134.58	8,100.43	2,737.35	1,399.79	171.23	2,263.94	180.92	6,310.19	1,843.24	7,604.86	1,338.55
May	8,020	2,095.95	8,120.99	2,798.79	1,219.97	131.32	1,727.73	130.44	6,427.08	1,876.49	7,090.86	1,122.58
June	6,292	6,023.82	6,785.27	2,173.12	1,126.85	202.73	1,718.46	169.36	6,358.88	1,761.76	6,808.71	1,137.46
July	5,741	2,735.92	6,083.05	2,072.24	1,759.63	176.76	2,573.05	686.15	8,805.25	2,003.21	6,605.48	1,123.60
August	6,136	4,360.81	6,239.22	2,766.14	2,386.14	184.39	1,653.59	199.49	7,058.62	2,297.37	6,103.07	1,031.84
September	7,088	2,210.74	6,994.05	2,246.42	1,400.32	126.50	1,031.31	119.54	7,610.32	1,391.86	6,902.52	1,158.22
October	8,571	3,581.57	8,026.54	2,596.09	675.46	88.94	484.62	56.18	9,480.67	1,819.08	7,068.08	1,315.83
November	8,540	4,590.68	7,909.34	2,773.86	401.30	62.11	602.77	65.60	9,307.21	2,120.86	6,227.65	1,189.57
December	8,515	3,963.55	7,604.69	2,876.41	524.77	78.06	626.40	85.97	7,840.96	1,441.26	5,796.13	1,077.50
<b>Total</b>	<b>91,152.21</b>	<b>43,101.54</b>	<b>93,653.42</b>	<b>39,970.99</b>	<b>15,671.45</b>	<b>1,797.90</b>	<b>17,123.82</b>	<b>2,071.24</b>	<b>85,323.24</b>	<b>22,354.28</b>	<b>82,357.02</b>	<b>16,128.90</b>

Source: Horticultural Crops Development Authority

- data not available

\*\* Figures subject to revision

**Table 11: Kenya's External Trade, October 2007 – November 2008**

KSh million

MONTH	Domestic Exports	Re-Exports	Total Exports	Total Imports	Volume of Trade	Home use Imports
<b>2007</b>						
October	23,516.06	1,168.19	24,684.25	59,049.87	83,734.12	55,189.14
November	24,970.24	1,103.51	26,073.75	57,731.91	83,805.65	53,993.58
December	16,940.05	1,125.93	18,065.98	37,757.37	55,823.34	41,857.30
<b>2008</b>						
January	22,767.81	985.72	23,753.53	64,341.01	88,094.54	56,488.85
February	31,277.01	1,050.16	32,327.17	58,051.43	90,378.61	56,707.94
March	25,654.53	1,460.93	27,115.46	53,200.79	80,316.25	52,191.67
April	27,893.33	1,292.86	29,186.19	54,785.45	83,971.64	51,389.44
May	24,436.30	1,303.31	25,739.61	56,877.43	82,617.03	57,151.43
June	23,832.87	1,477.07	25,309.94	49,957.26	75,267.20	53,371.94
July	28,667.31	1,671.58	30,338.89	70,300.09	100,638.98	60,557.64
August	27,487.90	2,265.53	29,753.42	72,644.67	102,398.09	72,423.12
September	26,618.40	1,869.18	28,487.58	74,773.03	103,260.61	67,656.83
October	29,556.05	2,984.15	32,540.20	74,855.83	107,396.03	75,450.09
November	27,434.29	1,624.36	29,058.65	68,387.90	97,446.55	66,706.10

**Source: Customs Department**

**Table 12: Major Destinations of Domestic Exports, October 2007 – November 2008**

KSh Million											
Month	Uganda	Tanzania	United Kingdom	Pakistan	Netherlands	Egypt	Germany	Rwanda	USA	United Arab Emirates	France
<b>2007</b>											
November	3,224.78	1,952.63	2,810.58	838.45	2,046.09	857.27	571.37	540.50	1,643.20	1,203.54	452.48
December	1,766.75	1,257.42	2,025.86	535.16	1,503.12	438.06	569.63	364.82	1,341.31	570.10	299.66
<b>2008</b>											
January	2,599.18	1,705.11	3,423.94	791.97	2,728.84	580.95	562.45	345.54	1,241.43	545.50	426.52
February	3,292.99	1,973.99	3,853.97	1,030.52	2,878.64	1,306.73	666.82	743.15	1,975.69	804.75	372.62
March	3,063.24	1,756.01	3,118.21	683.00	2,256.37	1,545.47	591.34	505.26	1,371.59	784.62	389.71
April	3,656.76	2,130.95	2,892.92	924.21	2,044.85	2,102.05	528.64	502.74	1,634.07	845.66	429.07
May	2,564.19	1,873.91	2,998.92	1,306.61	2,005.69	663.55	421.87	439.56	1,509.75	623.16	305.94
June	2,409.80	2,173.29	2,867.54	1,171.98	2,100.71	668.94	447.39	556.14	1,661.92	517.39	362.69
July	3,810.84	2,371.58	3,187.84	2,042.81	1,692.87	990.34	372.82	792.28	1,590.02	522.07	525.91
August	3,031.60	2,402.28	2,934.22	1,264.65	1,650.31	1,483.11	301.43	947.01	2,231.04	416.56	434.38
September	3,170.79	2,493.71	2,961.86	973.01	1,812.64	1,148.08	539.78	729.96	1,911.48	435.57	441.95
October	3,614.23	2,511.91	3,603.99	1,115.82	2,533.31	1,645.78	640.78	917.09	1,654.79	539.40	447.12
November	3,011.92	2,335.70	3,053.52	1,050.66	2,136.05	1,230.38	474.03	545.11	1,883.01	385.11	314.50

Source: Customs Department

\* Provisional

**Table 13: Major Origins of Imports, October 2007 – November 2008**

											KSh Million
Month	United Arab Emirates	United Kingdom	South africa	Saudi Arabia	Japan	India	USA	Germany	Netherlands	France	China
<b>2007</b>											
September	6,899.09	3,079.21	2,763.51	763.47	4,092.03	5,099.49	1,078.67	2,547.32	902.71	962.63	4,015.59
October	9,122.97	2,775.45	3,378.61	3,460.34	3,707.38	8,298.77	1,978.18	2,421.37	771.97	1,789.51	4,817.74
November	12,480.07	2,511.87	4,365.40	688.16	4,208.35	5,525.63	1,729.25	2,024.66	479.27	953.28	4,927.13
December	2,545.08	1,215.17	2,824.88	1,110.78	3,350.12	2,896.46	1,801.02	1,102.05	903.19	1,082.24	3,103.81
<b>2008</b>											
January	13,324.16	2,163.69	3,939.42	1,195.25	3,997.79	6,778.99	1,498.30	1,779.34	805.11	1,979.94	6,075.25
February	9,510.89	2,921.46	3,210.71	945.31	3,482.08	5,138.42	2,033.86	2,603.10	1,327.21	1,356.22	4,770.77
March	6,839.39	1,746.01	3,066.48	4,363.49	3,487.52	6,476.49	2,984.79	1,866.69	577.86	1,042.04	3,428.89
April	12,274.48	1,749.26	3,155.40	2,319.25	3,484.89	5,981.93	2,910.16	1,921.65	1,369.27	1,020.72	3,311.61
May	10,534.04	1,873.07	3,005.93	1,302.39	3,035.20	9,281.27	3,606.34	1,482.98	885.92	879.66	4,430.19
June	3,515.33	1,835.13	3,312.94	844.12	2,904.38	6,384.15	1,442.66	1,583.49	1,066.24	888.67	5,213.39
July	19,339.13	1,774.91	3,886.96	2,048.11	4,811.18	7,921.31	2,628.53	2,189.02	652.05	1,156.11	4,678.81
August	6,507.93	2,568.88	3,314.31	2,488.28	4,062.72	10,098.94	1,876.34	2,707.15	1,545.58	1,007.23	4,869.16
September	12,326.45	1,873.49	3,641.87	4,813.22	3,605.69	8,705.56	2,108.17	3,166.97	935.69	1,385.47	5,399.50
October	7,753.46	3,853.50	4,723.11	1,414.43	3,677.07	7,769.47	2,538.19	2,402.06	921.52	1,470.71	6,774.62
November	5,247.67	2,601.72	7,604.02	996.78	3,517.57	9,794.27	2,183.26	2,651.44	1,781.43	1,655.30	7,194.15

**Source: Customs Department**

\* Provisional

**Table 12 (a): Domestic Exports by Broad Economic Category**

Million KSh

DESCRIPTION	2007			2008										
	Nov	December	Total	January	February	March	Apr	May	June	July	August	September	October	November
FOOD AND BEVERAGES .. .. .	9,537	6,828	<b>105,765</b>	9,081	11,620	10,261	12,176	10,249	10,155	12,300	10,468	9,804	11,967	10,732
INDUSTRIAL SUPPLIES (Non-Food) ..	7,386	4,452	<b>66,441</b>	5,901	7,915	6,846	6,967	6,396	6,022	8,659	10,001	8,904	8,833	8,429
FUEL AND LUBRICANTS .. .. .	465	251	<b>9,346</b>	305	1,762	352	487	378	332	268	45	423	2,989	523
MACHINERY & OTHER CAPITAL EQUIPMENT ..	500	366	<b>4,427</b>	279	676	701	674	526	225	324	323	316	473	300
TRANSPORT EQUIPMENT .. .. .	278	131	<b>3,472</b>	167	339	235	336	232	430	385	260	264	300	406
CONSUMER GOODS NOT ELSEWHERE SPECIFIED ..	6,804	4,912	<b>72,161</b>	7,035	8,965	7,256	7,255	6,654	6,661	6,730	6,387	6,904	7,513	7,041
GOODS NOT ELSEWHERE SPECIFIED ..	0.00	0.00	<b>7</b>	0.00	0.00	4.00	0	0	8	0	4	3	2	3
<b>TOTAL .. .. .</b>	<b>24,970</b>	<b>16,940</b>	<b>261,619</b>	<b>22,768</b>	<b>31,277</b>	<b>25,655</b>	<b>27,893</b>	<b>24,436</b>	<b>23,833</b>	<b>28,666</b>	<b>27,488</b>	<b>26,618</b>	<b>32,077</b>	<b>27,434</b>
PERCENTAGE SHARES:														
Food and Beverages .. .. .	38.19	40.31	40.43	39.88	37.15	40.00	43.65	41.94	42.61	42.91	38.08	36.83	37.31	39.12
Industrial Supplies (Non-Food) .. .. .	29.58	26.28	25.40	25.92	25.31	26.68	24.98	26.17	25.27	30.21	36.38	33.45	27.54	30.73
Fuel and Lubricants .. .. .	1.86	1.48	3.57	1.34	5.63	1.37	1.74	1.55	1.39	0.93	0.16	1.59	9.32	1.91
Machinery and other Capital Equipment ..	2.00	2.16	1.69	1.23	2.16	2.73	2.41	2.15	0.94	1.13	1.18	1.19	1.47	1.09
Transport Equipment .. .. .	1.11	0.77	1.33	0.73	1.08	0.92	1.20	0.95	1.80	1.34	0.95	0.99	0.94	1.48
Consumer Goods not elsewhere specified	27.25	29.00	27.58	30.90	28.66	28.28	26.01	27.23	27.95	23.48	23.24	25.94	23.42	25.67
Goods not elsewhere specified .. .. .	0.00	0.00	0.00	0.00	0.00	0.02	0.00	0.00	0.03	0.00	0.01	0.01	0.01	0.01
<b>TOTAL .. .. .</b>	<b>100</b>	<b>100</b>	<b>100</b>	<b>100</b>	<b>100</b>	<b>100</b>	<b>100</b>	<b>100</b>	<b>100</b>	<b>100</b>	<b>100</b>	<b>100</b>	<b>100</b>	<b>100</b>

Source: Annual Trade Report - Customs & Excise Dept.

\* Provisional

- Data being verified

**Table 13 (a): Imports by Broad Economic Category**

Million KSh

DESCRIPTION	2007			2008										
	November	December	Total	January	February	March	Apr	May	June	July	August	Sept	Oct	Nov
FOOD AND BEVERAGES .. .. .	2,642.00	2,888.00	<b>42,483.1</b>	3,647.00	4,797.00	5,313.00	3,662.9	2,712.5	2,476.0	2,258.0	3,393.0	4,125.0	6,822.0	9,198.0
INDUSTRIAL SUPPLIES (Non-Food) ..	18,533.00	15,449.00	<b>193,819.3</b>	20,392.00	18,137.00	14,987.00	17,444.9	15,832.1	19,185.0	19,453.0	20,072.0	21,890.8	25,880.0	23,454.0
FUEL AND LUBRICANTS .. .. .	15,706.00	3,907.00	<b>126,911.2</b>	19,602.00	13,478.00	13,135.00	15,706.1	18,042.1	11,728.0	25,978.0	23,492.0	23,862.3	17,980.0	11,433.0
MACHINERY & OTHER CAPITAL EQUIPMENT ..	9,351.00	6,286.00	<b>97,336.5</b>	9,641.00	9,796.00	10,263.00	7,651.6	8,834.4	7,517.0	9,921.0	9,434.0	13,646.9	10,559.0	11,112.0
TRANSPORT EQUIPMENT .. .. .	6,683.00	5,950.00	<b>97,427.0</b>	6,262.00	7,666.00	5,413.00	6,575.0	7,225.9	5,035.0	8,018.0	11,963.0	4,487.0	8,263.0	7,855.0
CONSUMER GOODS NOT ELSEWHERE SPECIFIED ..	4,805.00	3,273.00	<b>44,883.8</b>	4,793.00	4,176.00	4,072.00	3,738.4	4,057.6	4,005.0	4,375.0	4,078.0	4,688.4	5,273.0	5,309.0
GOODS NOT ELSEWHERE SPECIFIED ..	12.00	4.00	<b>2,259.7</b>	4.00	1.00	18.00	6.6	172.9	11.0	0.0	213.0	207.0	79.0	27.0
<b>TOTAL .. .. .</b>	<b>57,732</b>	<b>37,757</b>	<b>605,120.6</b>	<b>64,341</b>	<b>58,051</b>	<b>53,201</b>	<b>54,785</b>	<b>56,877</b>	<b>49,957</b>	<b>70,003</b>	<b>72,645</b>	<b>72,907</b>	<b>74,856</b>	<b>68,388</b>
PERCENTAGE SHARES:														
Food and Beverages .. .. .	4.58	7.65	7.02	5.67	8.26	9.99	6.69	4.77	4.96	3.23	4.67	5.66	9.11	13.45
Industrial Supplies (Non-Food) .. .. .	32.10	40.92	32.03	31.69	31.24	28.17	31.84	27.84	38.40	27.79	27.63	30.03	34.57	34.30
Fuel and Lubricants .. .. .	27.21	10.35	20.97	30.47	23.22	24.69	28.67	31.72	23.48	37.11	32.34	32.73	24.02	16.72
Machinery and other Capital Equipment ..	16.20	16.65	16.09	14.98	16.87	19.29	13.97	15.53	15.05	14.17	12.99	18.72	14.11	16.25
Transport Equipment .. .. .	11.58	15.76	16.10	9.73	13.21	10.17	12.00	12.70	10.08	11.45	16.47	6.15	11.04	11.49
Consumer Goods not elsewhere specified	8.32	8.67	7.42	7.45	7.19	7.65	6.82	7.13	8.02	6.25	5.61	6.43	7.04	7.76
Goods not elsewhere specified .. .. .	0.02	0.01	0.37	0.01	0.00	0.03	0.01	0.30	0.02	0.00	0.29	0.28	0.11	0.04
<b>TOTAL .. .. .</b>	<b>100.00</b>	<b>100.00</b>	<b>100.00</b>	<b>100.00</b>	<b>100.00</b>	<b>100.00</b>	<b>100.00</b>	<b>100.00</b>	<b>100.00</b>	<b>100.00</b>	<b>100.00</b>	<b>100.00</b>	<b>100.00</b>	<b>100.00</b>

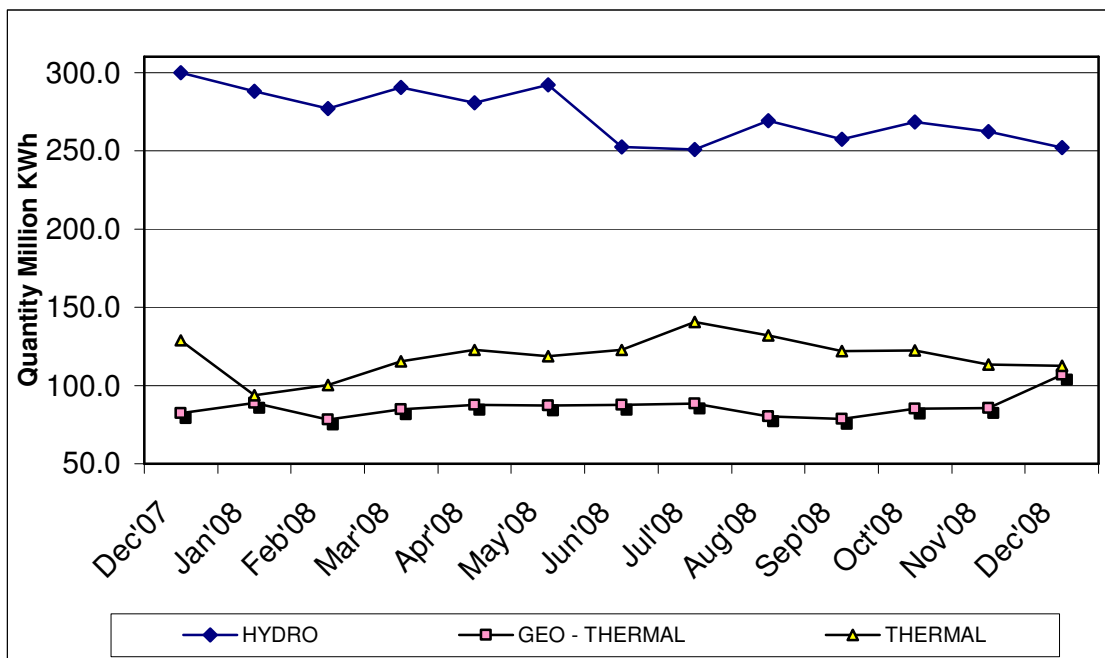
Table 14(a): Local Electricity Generation by Source

Million KWh				
MONTH	HYDRO	GEO - THERMAL	THERMAL	TOTAL
<b>2007</b>				
October	305.2	82.3	154.3	541.80
November	307.4	85.8	147.5	540.70
December	299.6	82.2	128.7	510.50
<b>2008</b>				
January	287.8	88.9	93.5	470.23
February	276.9	78.1	100.2	455.13
March	290.2	84.6	115.1	489.96
April	280.6	87.6	122.6	490.76
May	291.9	87.2	118.4	497.49
June	252.63	87.74	122.54	462.91
July	250.97	88.33	140.72	480.02
August	269.21	80.39	132.15	481.75
September	257.53	78.51	121.65	457.69
October	268.32	85.26	122.15	475.73
November	262.30	85.44	113.45	461.19
December	252.08	106.72	112.42	471.22

\* Provisional

Source: KPL&C

Fig 9: Electricity Generation by Source



**Table 14(b): Generation and Consumption of Electricity**

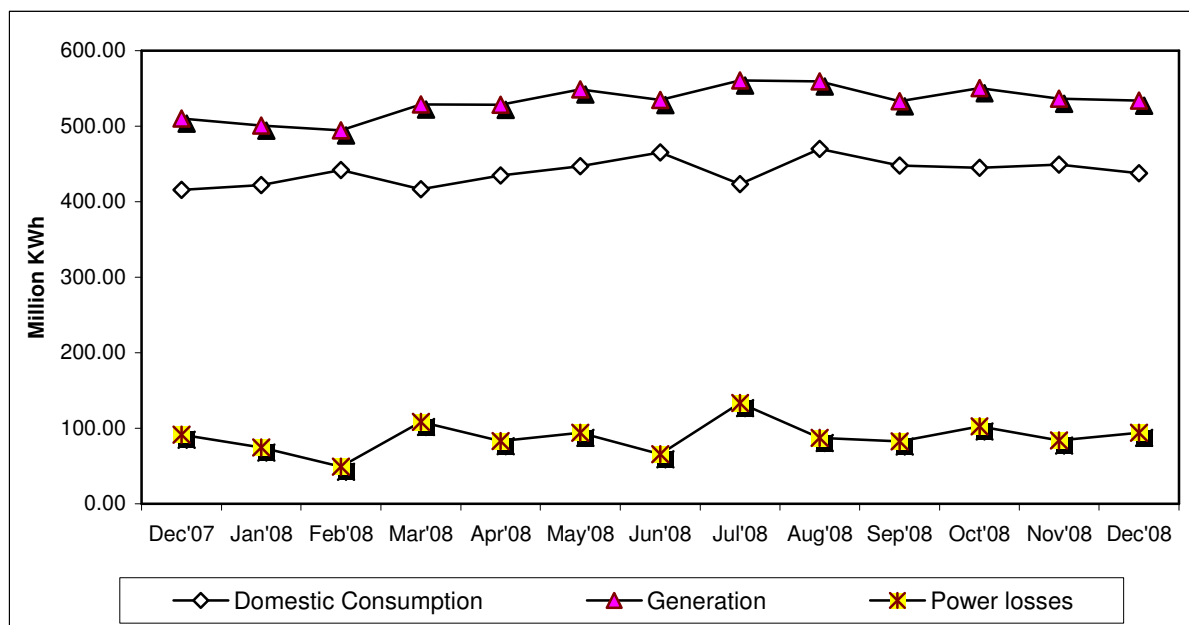
Month	GENERATION						CONSUMPTION				
	LOCAL GENERATION	IMPORTS			EPPS (Aggreko)	TOTAL GENERATION	TOTAL KPLC SALES	RURAL ELECTRIFICATION	EXPORTS TO UGANDA	TOTAL DOMESTIC CONSUMPTION*	POWER LOSSES
		UGANDA	TANZANIA	Total Imports							
<b>2007*</b>											
September	526.9	2.1	0.05	2.2	45.4	529.1	432.5	18.95	4.11	451.4	-73.5
October	541.8	2.3	0.05	2.4	48.0	544.2	411.8	18.89	3.33	430.7	-110.2
November	540.7	3.0	0.09	3.1	42.6	543.8	436.5	20.26	2.97	456.7	-84.1
December	510.5	2.6	0.11	2.7	34.8	513.2	398.2	17.55	3.01	415.7	-94.5
<b>2008*</b>											
January	470.2	2.6	0.11	2.7	32.5	505.4	401.3	20.60	4.39	421.9	-79.2
February	455.1	1.7	0.10	1.8	40.9	497.8	422.1	19.82	3.35	441.9	-52.6
March	490.0	1.9	0.10	2.0	40.9	532.9	397.2	19.38	3.88	416.6	-112.4
April	490.8	1.1	0.10	1.2	46.9	538.8	415.1	19.78	10.41	434.9	-93.5
May	497.5	1.6	0.11	1.7	57.7	556.6	426.5	20.48	7.95	447.0	-101.6
June	462.9	1.7	0.11	1.8	73.6	538.3	444.1	21.17	3.64	465.3	-69.4
July	480.0	1.6	0.12	1.7	82.4	564.2	402.5	20.73	3.59	423.3	-137.3
August	481.8	2.1	0.11	2.2	77.6	561.5	448.1	21.90	2.14	470.0	-89.4
September	457.7	2.1	0.10	2.2	75.5	535.4	427.8	20.16	2.27	448.0	-85.1
October	475.7	2.3	0.11	2.4	75.5	553.6	423.9	20.96	3.07	444.9	-105.6
November	461.2	2.5	0.10	2.6	75.5	539.4	429.3	19.98	3.07	449.3	-87.0
December*	471.2	2.5	0.10	2.6	62.3	536.2	417.1	20.4	2.31	437.6	-96.3

NB: Difference between amount purchased from KENGEN and imported from Uganda and consumption reflect transmission, distribution and commercial losses

\*Provisional

\*\* Excludes exports

**Fig 10: Electricity Generation Consumption and Power Losses**



**Table 14 ( c): Consumption of Petroleum Fuels**

	'000 MT								
PERIOD	LIGHT DIESEL OIL	JET FUEL	FUEL OILS	MOTOR SPIRIT	ILLUMINATING KEROSENE	HEAVY DIESEL OIL	L.P.G.	AVIATION GASLENE	TOTAL FUELS
<b>2007*</b>									
October	87.0	55.3	57.1	31.1	21.6	2.2	5.4	0.17	259.8
November	73.0	53.7	39.3	27.5	15.0	2.0	4.1	0.15	214.8
December	96.9	56.2	55.3	33.7	24.8	3.2	6.2	0.39	276.8
<b>2008*</b>									
January	76.4	47.8	37.0	27.9	17.6	2.0	6.5	0.19	215.3
February	82.4	45.1	39.4	27.0	17.8	2.2	5.1	0.11	219.1
March	87.4	46.6	44.3	28.7	16.6	2.2	4.5	0.14	230.4
April	88.3	43.6	47.9	28.6	21.8	2.3	5.3	0.09	237.9
May	96.2	44.8	66.7	28.7	21.0	2.1	5.2	0.13	264.8
June	85.5	40.2	42.8	26.1	19.8	1.9	5.1	0.11	221.6
July	95.6	46.9	38.4	30.5	22.0	2.1	21.7	0.46	257.6
August	104.0	49.5	57.1	27.5	20.7	2.3	5.1	0.17	266.5
September	79.4	48.2	42.4	29.4	15.2	2.1	5.3	0.17	222.1
October**	80.8	48.8	40.4	25.6	20.7	3.8	5.1	0.11	225.2
November**	99.0	46.0	47.4	32.9	18.5	2.6	6.4	0.21	253.1
December**	87.8	42.0	48.4	33.2	21.8	2.7	4.2	0.14	240.3

**Source : Ministry of Energy**

\* Sales from major oil marketing firms only

- data not available

+ Data from other Key firms not included

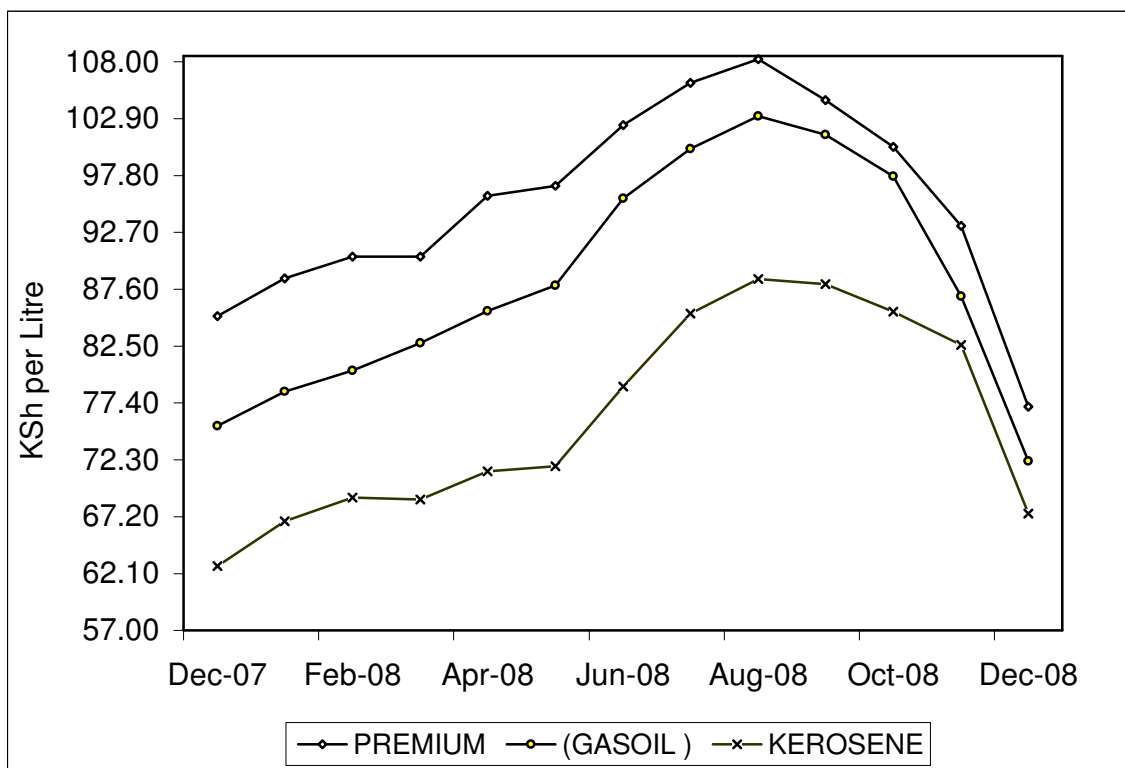
\*\*Provisional

**Table 14 (d): Weighted Average Retail Prices for Selected Fuel Products within Nairobi**

PERIOD	MOTOR GASOLINE PREMIUM	MOTOR GASOLINE REGULAR	LIGHT DIESEL OIL (GASOIL)	ILLUMINATING KEROSENE
Dec-07	85.18	82.77	75.36	62.79
Jan-08	88.57	86.57	78.40	66.77
Feb-08	90.49	88.23	80.31	68.90
Mar-08	93.40	90.52	82.79	68.77
Apr-08	95.96	92.63	85.62	71.27
May-08	96.87	95.15	87.91	71.74
Jun-08	102.34	98.74	95.70	78.87
Jul-08	106.10	101.52	100.21	85.43
Aug-08	108.20	103.32	103.10	88.49
Sep-08	104.56	101.02	101.48	88.07
Oct-08	100.36	98.16	97.73	85.56
Nov-08	93.27	94.83	86.94	82.61
Dec-08	77.07	83.53	72.19	67.47

**Source : Kenya National Bureau of Statistics**

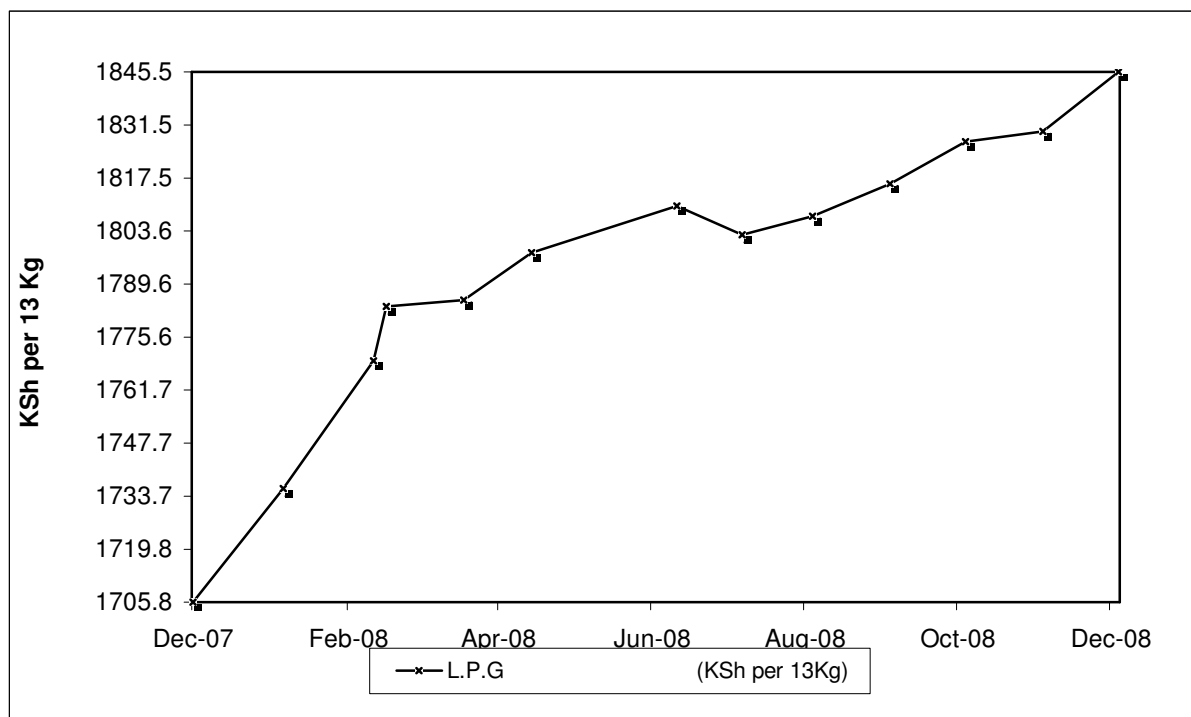
**Fig 11(a): Average Retail Prices of selected Petroleum Products**



**Table 14 (e): Weighted Average Retail Prices for Selected Fuels in Kenya**

PERIOD	MOTOR GASOLINE PREMIUM (KSh Per Litre)	MOTOR GASOLINE REGULAR (KSh per Litre)	LIGHT DIESEL OIL, GASOIL (KSh per Litre)	ILLUMINATING KEROSENE (KSh per Litre)	L.P.G (KSh per 13Kg)	Charcoal (KSh per 4 Kg Tin)
Dec-07	84.50	82.75	73.95	60.82	1,705.76	32.61
Jan-08	88.04	86.10	77.69	64.37	1,735.70	34.79
Feb-08	89.99	88.18	80.17	66.66	1,769.35	35.08
Mar-08	91.63	89.99	81.63	66.94	1,783.63	34.99
Apr-08	94.32	92.71	84.49	68.81	1,785.46	34.91
May-08	98.60	94.96	88.51	74.30	1,797.90	35.50
Jun-08	100.43	98.73	93.18	75.45	1,810.07	35.84
Jul-08	103.30	102.45	97.68	80.95	1,802.58	35.73
Aug-08	105.90	104.18	100.90	84.95	1,807.43	35.95
Sep-08	106.85	103.89	100.77	84.52	1,816.06	36.59
Oct-08	102.12	101.09	98.09	82.61	1,827.09	36.95
Nov-08	96.07	98.12	90.62	81.11	1,827.09	37.45
Dec-08	83.61	86.16	77.54	71.10	1,845.46	37.56

**Fig 11(b): Weighted Average Prices for LPG in Kenya**



**Table 14(f): Murban ADNOC Prices 2003-2008**

Month/Year	US\$BBL					
	2003	2004	2005	2006	2007	2008*
January	29.60	31.05	42.10	62.15	54.85	92.25
February	31.70	30.90	44.00	60.95	58.75	95.10
March	29.10	33.15	50.95	60.85	62.10	102.20
April	25.00	33.80	52.55	67.50	67.60	109.35
May	25.85	37.05	49.80	68.50	68.40	125.75
June	26.80	35.95	55.45	68.85	69.70	134.00
July	27.75	37.35	57.10	73.00	73.70	137.35
August	28.85	41.55	60.95	72.70	71.75	117.50
September	26.95	41.39	61.05	63.25	78.55	98.05
October	29.10	42.80	58.00	59.35	81.80	69.25
November	29.60	39.65	54.95	59.70	91.75	51.40
December	30.05	38.50	56.90	62.05	90.60	42.10

**Source : Ministry of Energy**

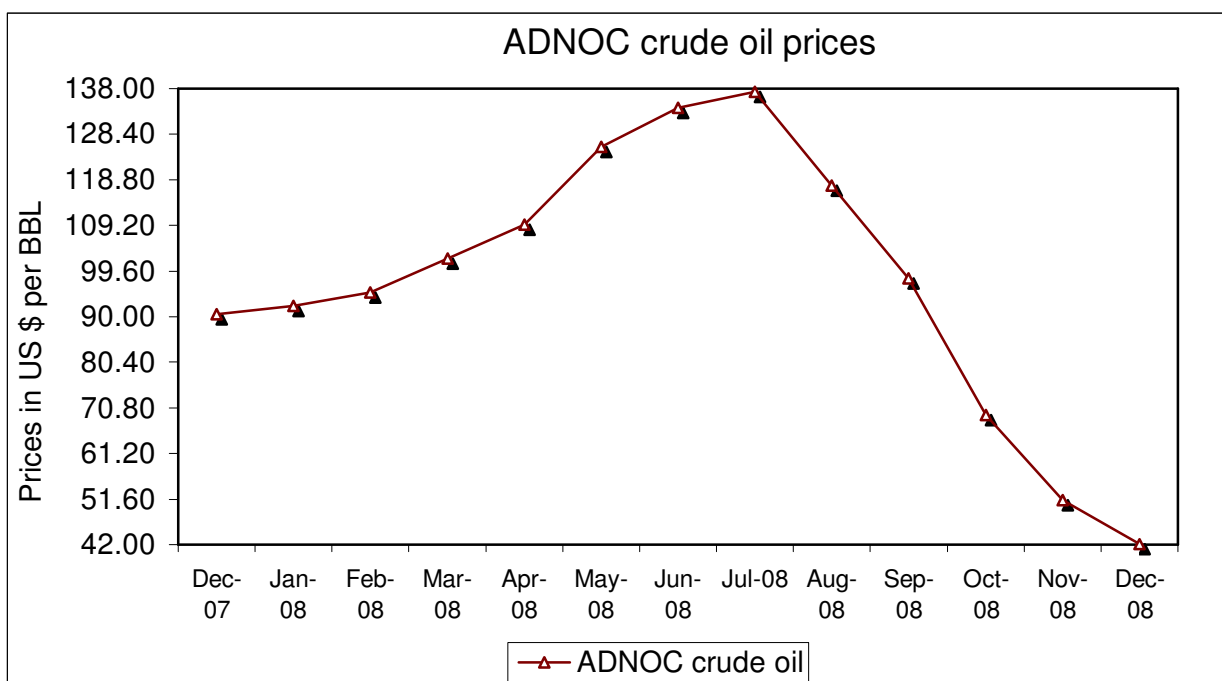
\* Provisional

ADNOC : Abu Dhabi National Oil Corporation

PRICE : Abu Dhabi Free On Board (FOB)

US\$/ BBL: US Dollar per Barrel

**Fig 12: Trend for Murban ADNOC Crude Oil Prices**



**Table 15: Value of Building Plans Approved by Nairobi City Council (NCC)**

**KSh.'Million**

MONTHS	ACTUAL			REAL **		
	RESIDENTIAL	NON RESIDENTIAL	AGGREGATE ACTUAL	RESIDENTIAL	NON RESIDENTIAL	REAL AGGREGATE
<b>2007</b>						
July	2,181.9	2,270.1	4,452.0	46.4	46.0	92.4
Aug	1,660.9	1,459.9	3,120.8	35.3	29.6	64.9
Sep	2,556.2	1,514.4	4,070.6	52.1	29.4	81.5
Oct	6,214.1	2,764.2	8,978.2	126.7	53.7	180.4
November	2,959.5	3,125.3	6,084.8	60.4	60.7	121.3
December	2,721.4	963.3	3,684.8	55.5	18.7	73.4
<b>2008</b>						
January	2,355.3	1,968.5	4,323.8	43.8	34.9	78.7
February	2,496.4	1,525.4	4,021.8	46.4	27.1	73.5
March	1,496.1	2,916.8	4,412.9	27.8	51.7	79.5
April	3,249.1	2,962.9	6,212.0	60.4	52.6	112.9
May	1,683.6	2,810.7	4,494.3	31.3	49.9	81.1
June	2,008.8	1,874.8	3,883.6	38.0	33.9	71.9
July	2,417.1	1,368.1	3,785.2	45.3	24.6	69.9
August	1,961.3	1,621.5	3,582.8	36.5	29.1	65.5
September	2,144.5	1,589.7	3,734.2	39.9	28.5	68.4

**Source: Nairobi City Council**

\* Provisional

**Table 16(a): Domestic Production of Sugar**

Month	Metric Tonnes							
	2001	2002	2003	2004	2005	2006	2007	2008*
January	28,291	48,300	37,923	49,186	48,993	47,596	42,188	38,986
February	30,308	39,479	39,709	48,708	41,929	44,823	41,246	49,772
March	36,110	39,479	22,881	46,827	40,192	51,327	45,933	40,753
April	33,148	41,105	17,879	43,123	42,988	41,055	47,255	38,968
May	24,731	18,744	34,954	37,583	40,869	39,849	45,427	50,865
June	35,683	44,581	39,144	28,069	29,076	34,985	36,870	49,300
July	25,695	50,184	31,878	36,824	27,995	30,985	37,496	40,805
August	19,015	45,895	40,106	41,622	41,585	47,002	44,898	21,130
September	37,058	48,752	48,302	45,438	39,003	35,173	44,396	40,567
October	37,355	44,573	48,939	45,530	45,810	35,102	48,849	
November	29,311	35,609	43,037	45,107	42,493	34,265	44,155	
December	40,733	37,923	43,768	48,738	48,069	33,509	41,691	
<b>Total</b>	<b>377,438</b>	<b>494,624</b>	<b>448,520</b>	<b>516,755</b>	<b>489,002</b>	<b>475,671</b>	<b>520,404</b>	

\*Provisional

\*\* Revised based on Kenya Sugar Board figures.

Source: Kenya Sugar Authority

**TABLE 16(b): PRODUCTION OF SOFT DRINKS**

Month	Metric Tonnes							
	2001	2002	2003	2004	2005	2006*	2007*	2008*
January	28,889	38,553	51,676	17,162	22,025	32,548	28,835	25,595
February	17,270	18,547	19,540	12,692	22,895	26,470	27,484	23,744
March	17,721	17,558	17,353	17,650	27,395	27,538	31,120	31,358
April	13,798	14,096	15,970	10,596	18,196	19,542	26,411	23,257
May	11,288	11,698	13,514	12,509	17,308	20,406	26,148	24,834
June	11,840	13,917	15,109	19,776	18,513	22,682	22,852	21,903
July	7,981	6,947	6,266	13,828	19,044	17,568	20,508	20,769
August	10,136	10,486	10,784	12,722	15,367	20,095	21,402	22,418
September	8,180	7,842	6,709	18,768	19,950	20,127	25,899	27,199
October	11,042	9,980	9,102	13,863	21,965	23,774	40,067	
November	12,781	12,354	11,977	11,813	26,881	20,689	27,177	
December	19,612	20,521	22,989	14,542	27,485	27,968	30,329	
<b>Total</b>	<b>170,538</b>	<b>182,499</b>	<b>200,989</b>	<b>175,921</b>	<b>257,024</b>	<b>279,407</b>	<b>328,231</b>	

Source : Kenya National Bureau of Statistics

**Table 16(c): Production of Assembled Vehicles**

Month	Numbers			
	2005	2006*	2007*	2008*
January	322	360	450	468
February	641	411	516	592
March	579	461	565	388
April	553	436	532	601
May	489	486	574	575
June	448	399	481	487
July	507	439	456	468
August	439	480	589	440
September	423	477	566	488
October	341	447	718	503
November	322	592	658	
December	335	392	437	
<b>Total</b>	<b>5,399</b>	<b>5,380</b>	<b>6,542</b>	

\*Provisional

**TABLE 16(d): PRODUCTION OF GALVANISED SHEETS**

Month	Metric Tonnes			
	2005	2006	2007	2008
January	12,203	13,520	13,515	16,240
February	11,491	12,765	15,365	16,912
March	10,679	12,736	16,920	15,498
April	10,439	13,138	15,855	15,396
May	15,952	13,754	14,816	15,741
June	15,085	13,946	16,404	15,528
July	13,596	15,695	15,674	16,935
August	14,806	15,180	15,921	17,166
September	17,536	13,927	15,877	17,255
October	15,837	13,619	16,611	17,247
November	15,544	15,552	15,372	
December	15,950	14,914	15,930	
<b>Total</b>	<b>169,118</b>	<b>168,746</b>	<b>188,260</b>	

**Source : Kenya National Bureau of Statistics**

- data not available

\*Provisional

**Table 16(e): Cement production and Consumption**

MONTHS	2006		2007*		2008*	
	PRODUCTION	CONSUMPTION	PRODUCTION	CONSUMPTION	PRODUCTION	CONSUMPTION
<b>January</b>	161,701	136,601	196,464	135,327	178,681	155,664
<b>February</b>	158,364	129,892	178,706	130,918	186,508	176,538
<b>March</b>	164,533	145,723	215,477	164,619	213,740	224,089
<b>April</b>	167,015	130,696	198,779	162,976	211,728	206,255
<b>May</b>	173,367	137,022	214,333	178,679	254,809	250,675
<b>June</b>	179,889	148,516	198,002	163,622	244,128	243,965
<b>July</b>	191,968	148,648	236,597	190,706	267,072	273,642
<b>August</b>	186,962	160,361	235,786	191,609	266,905	256,263
<b>September</b>	180,924	151,012	235,088	191,373	258,139	256,557
<b>October</b>	212,101	172,258	206,289	191,244	359,315	250,000
<b>November</b>	202,101	163,825	221,484	199,745	338,175	244,531
<b>December</b>	195,165	141,260	208,656	160,582	355,149	250,731
<b>TOTAL</b>	<b>2,174,090</b>	<b>1,765,814</b>	<b>2,545,660</b>	<b>2,061,400</b>	<b>3,134,349</b>	<b>2,788,909</b>

- data not available

Source: Kenya National Bureau of Statistics

\*Provisional

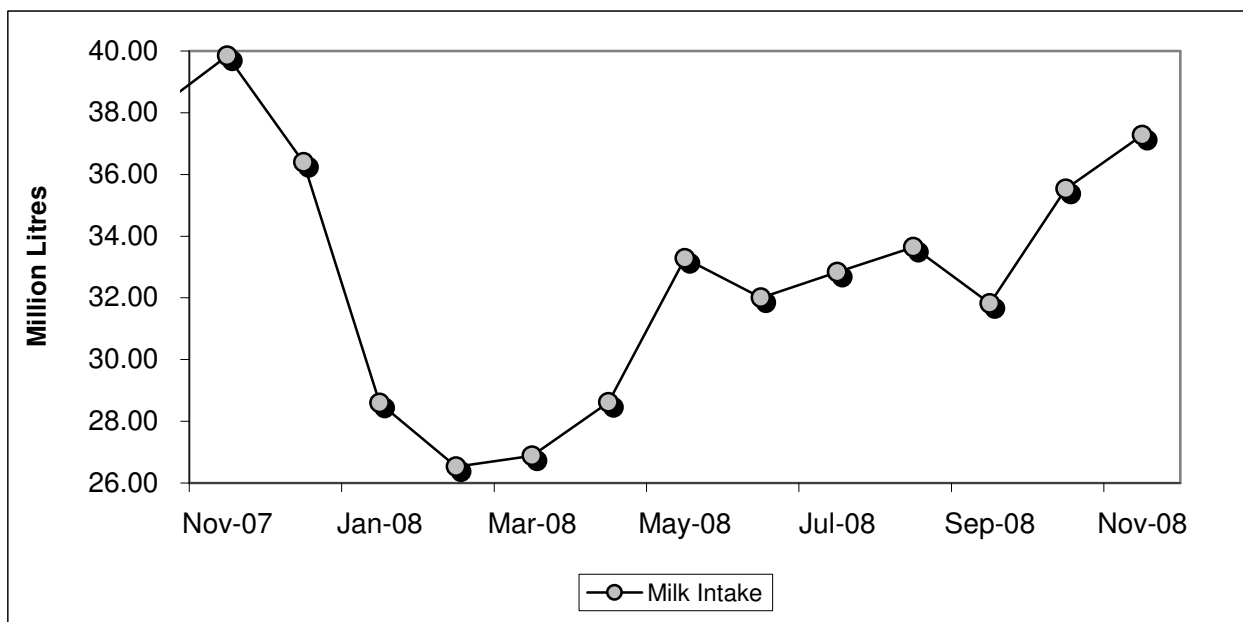
-: data not available

**Table 16F: Milk Intakes in the Formal Milk Sector**

	litres			
Month	2005	2006	2007	2008
Jan	25,843,184	28,993,210	35,997,997	28,596,999
Feb	25,233,962	25,445,275	37,508,095	26,527,462
Mar	24,245,260	21,142,657	34,608,329	26,885,445
Apr	22,271,673	23,285,252	33,286,207	28,616,588
May	25,260,095	29,773,451	30,038,560	33,280,195
Jun	27,742,995	34,032,057	33,092,547	34,723,010
Jul	32,972,254	33,304,057	33,147,783	32,838,240
Aug	31,841,004	32,658,519	36,022,269	33,643,230
Sept	30,935,673	32,159,974	35,186,438	31,812,702
Oct	30,945,573	32,236,110	37,988,733	35,530,367
Nov	32,229,310	33,925,921	39,840,842	37,272,055
Dec	30,013,714	33,192,254	36,393,069	
<b>Total</b>	<b>339,534,696</b>	<b>360,148,736</b>	<b>423,110,869</b>	

Source: Kenya Dairy Board

**FIG 13: Milk Intake in the Formal Sector**

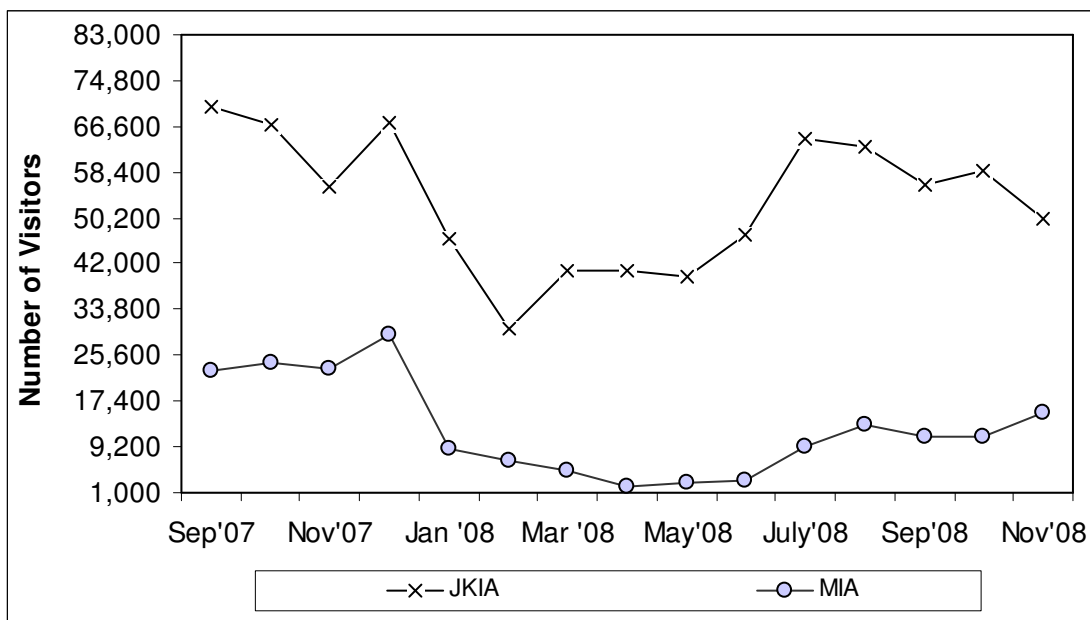


**Table 17: Visitor Arrivals\* through Jomo Kenyatta International Airport (J.K.I.A) and Moi International Airport (M.I.A)**

MONTH	AIRPORT		Numbers
	JKIA	MIA	Visitors to Kenya
<b>Total 2006</b>	<b>684,475</b>	<b>261,773</b>	<b>946,248</b>
<b>2007</b>			
July	80,025	21,963	101,988
August	82,487	26,916	109,403
September	70,160	22,810	92,970
October	66,954	24,127	91,081
November	55,701	23,210	78,911
December	67,126	29,210	96,336
<b>Total 2007</b>	<b>769,597</b>	<b>276,298</b>	<b>1,045,895</b>
<b>2008</b>			
January	46,464	8,906	55,370
February	30,231	6,739	36,970
March	40,770	5,106	45,876
April	40,686	2,063	42,749
May	39,812	2,760	42,572
June	47,224	3,059	50,283
July	64,208	9,311	73,519
August	62,890	13,081	75,971
September	56,026	11,136	67,162
October	58,504	11,260	69,764
November	50,224	15,369	65,593

\* Visitors arrivals exclude Kenyans

**FIG 14: VISITORS ARRIVING IN KENYA THROUGH THE MAIN AIRPORTS**



**TABLE (18A): JOMO KENYATTA INT. AIRPORT INTERNATIONAL FLIGHTS ONLY- EMBARKED PASSENGERS BY PORT OF DESTINATION.**

PORTS.	2007		2008										
	Dec	TOTAL	Jan	Feb	Mar	Apr	May	June	July	Aug	Sep	Oct	Nov
ADDIS ABABA (ADD)	6,190	45,260	719	3,975	635	740	620	4,320	1,081	3,929	728	3,297	3,739
CAIRO (CAI)	1,201	26,195	902	1,367	1,860	2045	1,903	2,505	3,719	2,941	2,897	2,812	2,628
DAR ES SALAAM (DAR)	6,373	82,939	5,278	5,667	6,300	7018	6,709	2,684	7,073	7,353	7,244	5,555	6,655
ENTEBBE (EBB)	9,375	119,541	9,143	8,767	10,505	9631	9,647	11,051	10,839	11,005	10,456	10,401	10,802
HARARE (HRE)	1,635	16,880	1,223	1,148	1,556	1357	1,334	1,186	918	1,352	1,234	1,218	1,475
JOHANNESBURG (JNB)	9,998	116,178	8,672	6,645	6,168	5860	8,118	8,741	6,237	10,646	6,743	10,823	14,430
<b>TOTAL AFRICA</b>	<b>34,772</b>	<b>406,993</b>	<b>25,937</b>	<b>27,569</b>	<b>27,024</b>	<b>26,651</b>	<b>28,331</b>	<b>30,487</b>	<b>29,867</b>	<b>37,226</b>	<b>29,302</b>	<b>34,106</b>	<b>39,729</b>
BOMBAY (BOM)	6,732	73,691	1,019	4,821	662	5271	4,282	6,253	6,442	6,161	4,486	9,680	1,296
DUBAI (DXB)	17,780	122,115	13,866	5,729	15,580	15383	15,540	14,870	21,141	23,848	17,050	7,376	16,917
JEDAH (JED)	0	8,130	0	256	264	492	507	463	0	2,432	1,429	0	472
KARACHI (KHI)	0	0	0	0	0	0	0	0	0	0	0	0	0
MUSCAT (MCT)	0	0	0	0	0	0	0	0	0	0	0	0	0
OTHERS													
<b>TOTAL ASIA</b>	<b>24,512</b>	<b>203,936</b>	<b>14,885</b>	<b>10,806</b>	<b>16,506</b>	<b>21,146</b>	<b>20,329</b>	<b>21,586</b>	<b>27,583</b>	<b>32,441</b>	<b>22,965</b>	<b>17,056</b>	<b>18,685</b>
AMSTERDAM (AMS)	2,632	176,803	3,950	2,357	2,703	3433	7,771	13,085	6,414	19,163	17,641	16,243	15,802
BRUSSELS (BRU)	2,069	29,563	1,345	1,003	0	0	3,353	3,282	2,403	3,831	1,830	1,825	2,092
LONDON (LON)	11,862	195,780	14,002	7,252	10,247	6786	11,093	17,709	12,957	23,915	20,474	18,237	15,037
PARIS-(CDG) & (PAR)	1,718	19,034	1,248	565	-	0	0	0	3,885	4,047	2,657	1,877	1,967
ROME (ROM) <sup>z</sup>	-	-	-	-	-	0	0	0	0	0	0	0	0
ZURICH (ZRH)	2,137	27,288	3,695	3,558	0	0	3,669	4,064	2,552	2,152	0	2,408	2,054
<b>TOTAL EUROPE</b>	<b>20,418</b>	<b>448,468</b>	<b>24,240</b>	<b>14,735</b>	<b>12,950</b>	<b>10,219</b>	<b>25,886</b>	<b>38,140</b>	<b>28,211</b>	<b>53,108</b>	<b>42,602</b>	<b>40,590</b>	<b>36,952</b>
<b>TOTAL OTHERS**</b>	<b>34,060</b>	<b>428,639</b>	<b>28,017</b>	<b>35,556</b>	<b>69,894</b>	<b>33061</b>	<b>37,644</b>	<b>37,102</b>	<b>45,355</b>	<b>52,666</b>	<b>44,102</b>	<b>40,382</b>	<b>42,050</b>
<b>GRAND TOTAL</b>	<b>113,762</b>	<b>1,488,177</b>	<b>93,079</b>	<b>88,666</b>	<b>126,374</b>	<b>91,077</b>	<b>112,190</b>	<b>127,315</b>	<b>131,016</b>	<b>175,441</b>	<b>138,971</b>	<b>132,134</b>	<b>137,416</b>

Source : Kenya National Bureau of Statistics

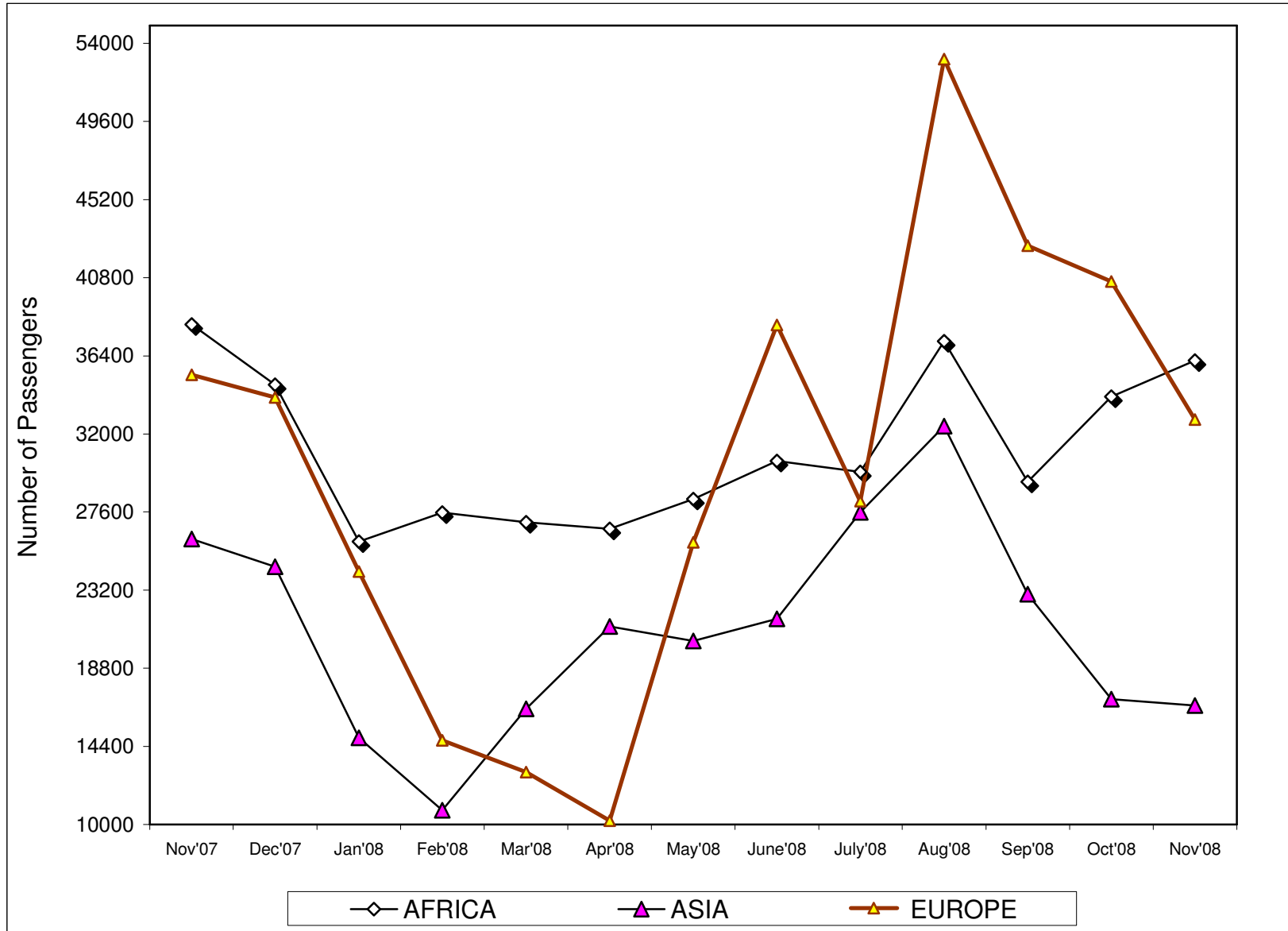
- no passengers embarked

\* Provisional

\*\* Ports not listed

z All planes flying to Italy

FIG 15: J.K.I.A. PASSENGERS BY REGION OF DESTINATION



**TABLE (18B): JOMO KENYATTA INT. AIRPORT INTERNATIONAL FLIGHTS ONLY- LANDED PASSENGERS BY PORT OF DESTINATION.**

PORTS	2007		2008										
	Dec	TOTAL	Jan	Feb	Mar	Apr	May	June	July	Aug	Sep	Oct	Nov
<b>ADDIS ABABA (ADD)</b>	2,812	<b>42,261</b>	858	3,232	891	950	1,114	3,041	649	3,761	1,238	4,493	4,212
<b>CAIRO (CAI)</b>	1,451	<b>23,824</b>	1,184	1,202	1,592	1,874	1,840	2,369	3,888	6,478	2,390	3,853	2,276
<b>DAR ES SALAAM (DAR)</b>	5,816	<b>85,689</b>	5,553	6,770	6,334	6,547	6,277	4,881	7,963	7,909	4,633	6,176	7,129
<b>ENTEBBE (EBB)</b>	9,177	<b>118,612</b>	8,756	8,591	10,461	9,304	9,430	10,774	11,035	10,881	10,372	10,747	10,555
<b>HARARE (HRE)</b>	1,303	<b>15,555</b>	1,155	1,016	1,052	1,043	893	1,060	1,172	1,195	1,170	1,109	1,120
<b>JOHANNESBURG (JNB)</b>	10,733	<b>107,676</b>	7,148	5,527	5,729	6,306	8,002	9,171	7,154	10,042	6,814	10,408	10,840
<b>TOTAL AFRICA</b>	<b>31,292</b>	<b>393,617</b>	<b>24,654</b>	<b>26,338</b>	<b>26,059</b>	<b>26,024</b>	<b>27,556</b>	<b>31,296</b>	<b>31,861</b>	<b>40,266</b>	<b>26,617</b>	<b>36,786</b>	<b>36,132</b>
<b>BOMBAY (BOM)</b>	0	<b>70,627</b>	1,616	1,121	1,097	6,113	7,162	6,700	6,453	6,150	5,183	4,852	755
<b>DUBAI (DXB)</b>	17,210	<b>118,377</b>	14,215	5,395	14,699	14,226	15,024	15,587	19,616	20,475	18,581	6,064	15,746
<b>JEDAH (JED)</b>	0	<b>6,906</b>	0	165	262	323	452	706	0	1,546	250	0	195
<b>KARACHI (KHI)</b>	0	<b>0</b>	0	0	0	0	0	0	0	0	0	0	0
<b>MUSCAT (MCT)</b>	0	<b>-</b>	0	0	0	0	0	0	0	0	0	0	0
<b>TOTAL ASIA</b>	<b>17,210</b>	<b>195,910</b>	<b>15,831</b>	<b>6,681</b>	<b>16,058</b>	<b>20,662</b>	<b>22,638</b>	<b>22,993</b>	<b>26,069</b>	<b>28,171</b>	<b>24,014</b>	<b>10,916</b>	<b>16,696</b>
<b>AMSTERDAM (AMS)</b>	7,605	<b>183,515</b>	5,355	5,294	5,994	4,337	7,929	7,297	5,595	16,997	13,121	17,022	14,772
<b>BRUSSELS (BRU)</b>	1,926	<b>19,720</b>	767	600	0	0	2,350	5,751	1,828	1,412	0	1,985	1,158
<b>LONDON (LON)</b>	15,233	<b>189,493</b>	8,948	6,201	9,284	5,787	11,985	20,902	10,953	13,890	18,100	20,682	13,118
<b>PARIS-(CDG)&amp;( PAR)</b>	2,096	<b>17,293</b>	639	584	0	0	0	0	2,892	2,789	1,672	2,268	1,775
<b>ROME (ROM) Z</b>	0	<b>-</b>	0	0	0	0	0	0	0	0	1,813	0	0
<b>ZURICH (ZRH)</b>	2,307	<b>25,579</b>	1,521	1,099	0	0	1,679	2,097	5,104	2,246	0	0	1,996
<b>TOTAL(EUROPE)</b>	<b>29,167</b>	<b>435,600</b>	<b>17,230</b>	<b>13,778</b>	<b>15,278</b>	<b>10,124</b>	<b>23,943</b>	<b>36,047</b>	<b>26,372</b>	<b>37,334</b>	<b>34,706</b>	<b>41,957</b>	<b>32,819</b>
<b>OTHERS(TOTAL) **</b>	<b>38,133</b>	<b>445,935</b>	<b>25,996</b>	<b>30,007</b>	<b>72,017</b>	<b>54,919</b>	<b>56,779</b>	<b>42,088</b>	<b>48,881</b>	<b>50,659</b>	<b>41,906</b>	<b>45,431</b>	<b>39,842</b>
<b>GRAND TOTAL</b>	<b>115,802</b>	<b>1,471,062</b>	<b>83,711</b>	<b>76,804</b>	<b>129,412</b>	<b>111,729</b>	<b>130,916</b>	<b>132,424</b>	<b>133,183</b>	<b>156,430</b>	<b>127,243</b>	<b>135,090</b>	<b>125,489</b>

Source : Kenya National Bureau of Statistics

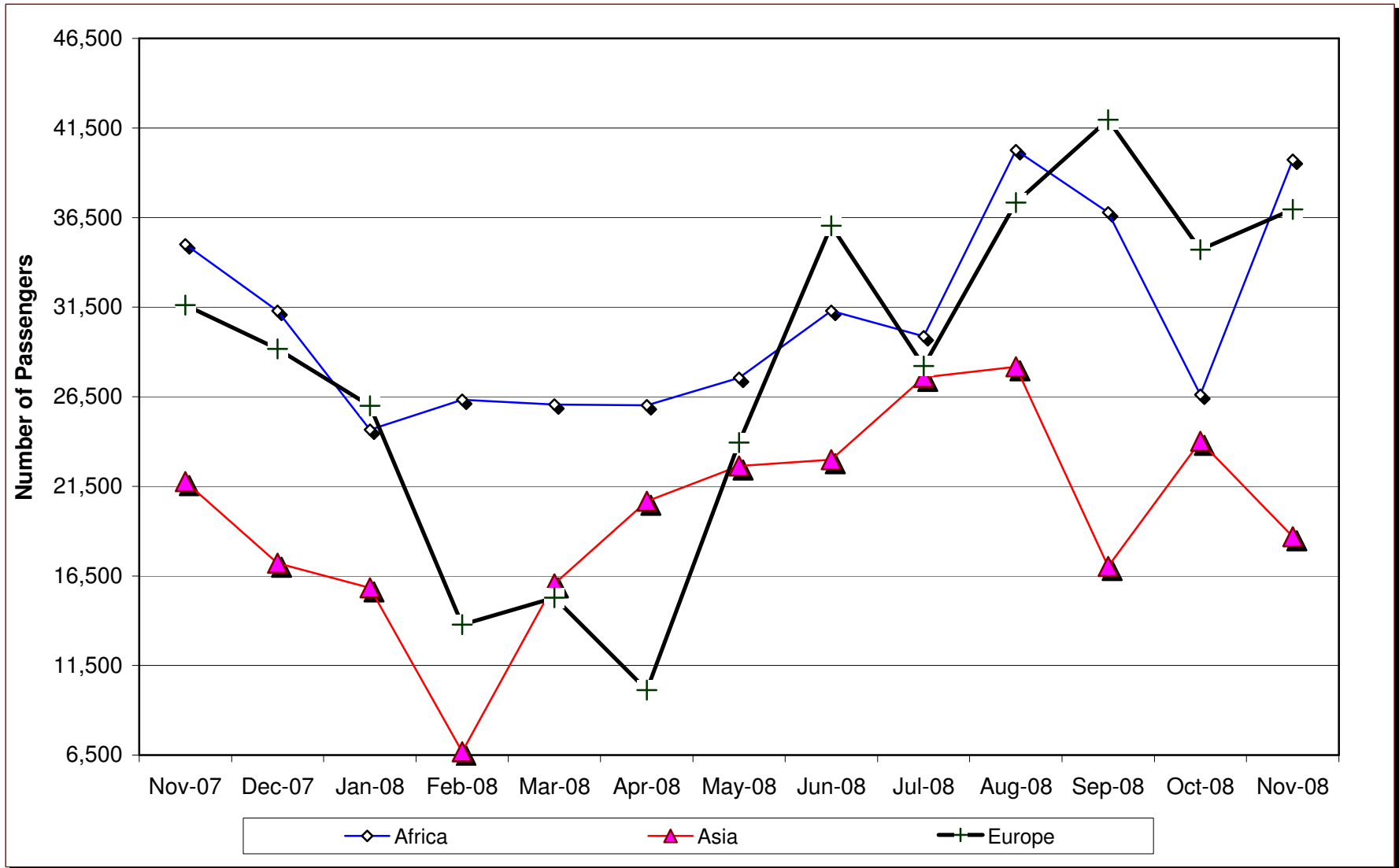
- no passengers landed

\* Provisional

\*\* Ports not listed

z Includes all planes from Italy

**FIG 16: J.K.I.A. PASSENGERS BY REGION OF ORIGIN**



**Table 18 C: New Vehicle Registration**

<i>Body Type/Month</i>	2007		2008												
	<i>Dec</i>	<i>Cumulative 2007</i>	<i>Jan</i>	<i>Feb</i>	<i>Mar</i>	<i>Apr</i>	<i>May</i>	<i>June</i>	<i>July</i>	<i>Aug</i>	<i>Sep</i>	<i>Oct</i>	<i>Nov</i>	<i>Dec</i>	<i>Cumulative 2008</i>
Saloons	1,096	<b>17,893</b>	1,876	1,065	830	1,272	1,311	1,230	1,823	2,686	1,630	1,603	1,527	1,833	<b>18,686</b>
St,Wagon	1,406	<b>24,115</b>	2,702	1,553	1,299	1,839	2,148	1,890	2,799	2,689	2,580	2,232	2,358	2,607	<b>26,696</b>
Vans,P/Ups,etc	696	<b>9,470</b>	601	706	566	877	413	405	555	408	479	680	587	757	<b>7,034</b>
M/Buses	503	<b>4,252</b>	427	452	435	559	390	314	509	564	426	373	370	387	<b>5,206</b>
Buses	170	<b>2,006</b>	83	61	82	97	128	73	126	129	104	108	104	148	<b>1,243</b>
Lorries	471	<b>6,329</b>	409	462	541	658	547	593	585	680	682	542	330	662	<b>6,691</b>
Trailers	144	<b>2,193</b>	177	134	184	182	168	170	193	170	88	166	247	221	<b>2,100</b>
Motors Cycles	826	<b>16,293</b>	1,740	1,982	1,904	3,840	4,390	3,859	4,530	4,605	5,964	6,680	6,471	5,447	<b>51,412</b>
3 Whellers	15	<b>1,072</b>	63	48	75	30	56	57	79	67	45	80	60	44	<b>704</b>
Wheeled tractors	55	<b>1,213</b>	87	121	85	133	101	88	90	67	143	136	87	124	<b>1,262</b>
Others	13	<b>488</b>	27	45	43	52	47	59	58	43	69	65	253	36	<b>797</b>
<b>TOTAL</b>	<b>5,395</b>	<b>85,324</b>	<b>8,192</b>	<b>6,629</b>	<b>6,044</b>	<b>9,539</b>	<b>9,699</b>	<b>8,738</b>	<b>11,347</b>	<b>12,108</b>	<b>12,210</b>	<b>12,665</b>	<b>12,394</b>	<b>12,266</b>	<b>121,831</b>

Source : Kenya National Bureau of Statistics

\* Provisional

- Not specified