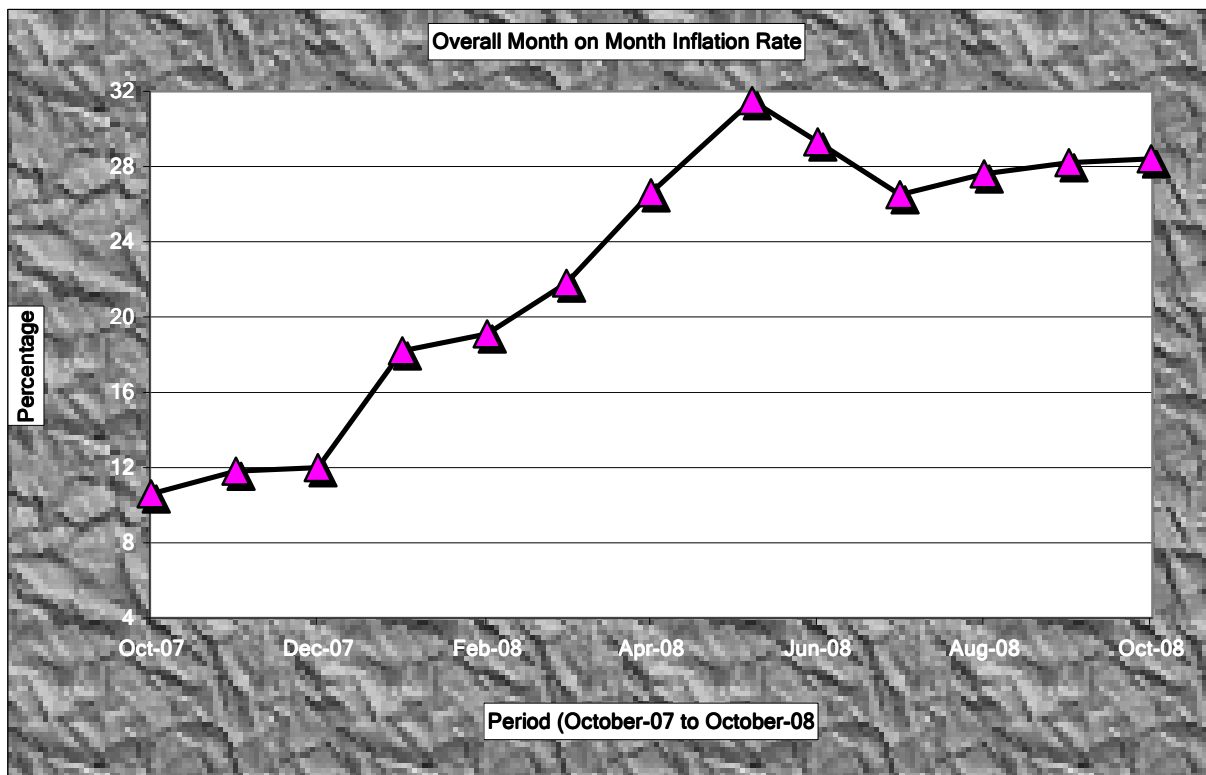


LEADING ECONOMIC INDICATORS



KENYA NATIONAL BUREAU OF STATISTICS

P.O. Box 30266- 00100 Nairobi
Website: www.Cbs.go.ke

Tel: 317586/88, 317612/22 Fax: 315977
email: director@cbs.go.ke

OCTOBER 2008

TABLE OF CONTENTS

MACRO ECONOMIC STATISTICS

Key highlights on Leading Economic Indicators	3
TABLE 1: KENYA CONSUMER PRICE INDICES AND INFLATION RATE.....	8
TABLE 2: MEAN FOREIGN EXCHANGE RATES OF KENYA SHILLINGS AGAINST SELECTED MAJOR CURRENCIES AT THE END OF THE MONTH.....	10
Table 3: Interest Rates (%).....	12
TABLE 4: CAPITAL MARKETS – NAIROBI STOCK EXCHANGE.....	13
TABLE 5 (a): MONEY SUPPLY	14
TABLE 5b: FOREIGN EXCHANGE RESERVES	16

AGRICULTURE

TABLE 6: COFFEE SALES AND PRICES	17
TABLE 7: TEA PRODUCTION AND PRICES*	18
Table 8(a): AVERAGE MONTHLY RETAIL PRICES FOR DRY MAIZE IN THE YEAR-2007.....	19
Table 8(b): Average Monthly Retail Prices for Dry Maize in the Year 2008	20
Table 8(c): Average Monthly Retail Prices for Dry Beans Prices (2007)	21
Table 8(d): Average Monthly Retail Prices for Dry Beans Prices (2008).....	22

EXTERNAL TRADE

Table 9: Export of Coffee, Tea and Horticultural Produce	23
Table 10: Monthly Exports of Horticultural Products.....	24
Table 11: Kenya's External Trade, August 2007 – August 2008	25
Table 12: Major Destinations of Domestic Exports, August 2007 – August 2008.....	26
Table 13: Major Origins of Imports, August 2007 – August 2008.....	27
Table 12 (a): Domestic Exports by Broad Economic Category	28

ENERGY

Table 13 (a): Imports by Broad Economic Category	29
Table 14(a): Local Electricity Generation by Source	30
Table 14(b): Generation and Consumption of Electricity	31
Table 14 (c): Consumption of Petroleum Fuels	32
Table 14 (d): Weighted Average Retail Prices for Selected Fuel Products within Nairobi.....	33
Table 14 (e): Weighted Average Retail Prices for Selected Fuels in Kenya.....	34
Table 14(f): Murban ADNOC Prices 2003-2008.....	35

MANUFACTURING AND, BUILDING AND CONSTRUCTION

Table 15: Value of Building Plans Approved by Nairobi City Council (NCC).....	36
Table 16(a): Domestic Production of Sugar	37
Table 16(c): Production of Assembled Vehicles	38
Table 16(e): Cement production and Consumption	39
Table 16F: Milk Intakes in the Formal Milk Sector.	40

TOURISM AND TRANSPORT

Table 17: Visitor Arrivals* through Jomo Kenyatta International Airport (J.K.I.A) and Moi International Airport (M.I.A)	41
TABLE (18A): JOMO KENYATTA INT. AIRPORT INTERNATIONAL FLIGHTS ONLY- EMBARKED PASSENGERS BY PORT OF DESTINATION.	42
TABLE (18B): JOMO KENYATTA INT. AIRPORT INTERNATIONAL FLIGHTS ONLY- LANDED PASSENGERS BY PORT OF DESTINATION.....	44
Table 18 C: New Vehicle Registration	46

CHARTS

FIG. 1: OVERALL MONTH ON MONTH AND UNDERLYING INFLATION RATES -----	9
FIG 2: END OF MONTH MEAN EXCHANGE RATE OF KENYA SHILLINGS AGAINST MAJOR SELECTED CURRENCIES -----	11
FIG 3: INTEREST RATES -----	12
FIG 4: NAIROBI STOCK EXCHANGE SHARES INDEX -----	13
FIG 5: MONEY SUPPLY (M3) -----	15
FIG 6: FOREIGN EXCHANGE RESERVES -----	16
FIG.7: COFFEE SALES AT THE NAIROBI COFFEE EXCHANGE -----	17
FIG.8: TEA PRODUCTION -----	18
Fig 9: Electricity Generation by Source -----	30
Fig 10: Electricity Generation Consumption and Power Losses -----	31
Fig 11(a): Average Retail Prices of selected Petroleum Products -----	33
Fig 11(b): Weighted Average Prices for LPG in Kenya -----	34
Fig 12: Trend for Murban ADNOC Crude Oil Prices -----	35
FIG 13: Milk Intake in the Formal Sector -----	40
FIG 14: VISITORS ARRIVING IN KENYA THROUGH THE MAIN AIRPORTS -----	41
FIG 15: J.K.I.A. PASSENGERS BY REGION OF DESTINATION -----	43
FIG 16: J.K.I.A. PASSENGERS BY REGION OF ORIGIN -----	45

Key highlights on Leading Economic Indicators

Overview

The monthly Leading Economic Indicators Publication for October 2008 highlight trends in Consumer Price Indices (CPI) and inflation, interest rates, exchange rates, international trade, agriculture, energy, manufacturing, building and construction, tourism and transport.

Macroeconomic Indicators and Financial Intermediation

The CPI increased by 0.96 percent from 292.57 points in September 2008 to 295.38 points in October 2008. Month-on-month overall inflation rate increased from 28.2 percent in September 2008 to 28.4 percent in October 2008 while month-on-month underlying inflation rate which excludes food items from the CPI basket decreased from 13.3 percent in September 2008 to 13.0 percent in October 2008.

The Kenyan Shilling strengthening against major international currencies in October 2008 but weakened against the US dollar and Japanese Yen by KSh 6.434 per Dollar and KSh 11.171, respectively. The Shilling also depreciated against the Ugandan and Tanzanian Shilling in the same period. The Kenyan Shilling appreciated against the Sterling Pound, the Euro and the South African Rand by 1.5, 3.1 and 9.9 per cent to trade at an average of KSh 130.221, KSh 101.994 and KSh 7.920 at the end of October 2008, respectively. However, the Shilling depreciated against the US Dollar and the Japanese Yen to trade at an average of KSh 79.653 and KSh 81.201, respectively in the same period. The Shilling also weakened against Tanzanian and Ugandan Shillings to trade at KSh 16.352 and KSh 23.603, respectively.

The benchmark 91-day Treasury bill increased marginally by 0.5 percentage points from 7.70 per cent in September 2008 to 7.75 per cent in October 2008. The weighted average lending rate offered by Commercial banks for loans and advances increased from 13.66 per cent to 14.12 per cent while savings rate increased from 1.73 per cent to 1.74 per cent over the same period.

The Nairobi Stock Exchange continued to witness bearish activities in October 2008 with the 20-share index (NSE 20) declining further by 19.0 per cent from 4,180.4 points in September 2008 to 3,386.7 points. Total value of shares traded declined significantly by 86.4 per cent from KSh 6.79 billion in September 2008 to KSh 3.64 billion in October 2008. Total number of shares traded also declined from 485.3 million shares to 393.5 million shares over the same period.

Broad money supply (M3) expanded by 2.9 per cent from KSh 859.3 billion in September 2008 to KSh 883.9 billion in October 2008. Money and quasi-money (M2) also expanded by 2.4 per cent from KSh 736.3 billion to KSh 754.0 billion over the same period.

Gross Foreign Exchange Reserves contracted in September 2008 by 1.2 per cent from KSh 365.2 billion in August 2008 to stand at KSh 360.8 billion while Net Foreign Exchange Reserves contracted significantly by 7.5 per cent to KSh 258.3 billion over the same period.

SECTORAL PERFORMANCES

a). Agriculture

Quantity of coffee auctioned at the Nairobi Coffee Exchange increased by 78.5 per cent from 2,173 MT in August 2008 to 3,878 MT in September 2008. However, the average auction price declined from KSh 179.50 per kilogram in August 2008 to KSh 173.56 per kilogram in September 2008.

Quantity of processed tea increased by 30.9 per cent from 24,494 MT in August 2008 to 32,061 MT in September 2008 while the average auction price increased from KSh 187.60 per kilogram to KSh 195.36 per kilogram over the same period.

Average price for dry maize increase marginally from KSh 25.4 per kilogram in June 2008 to KSh 24.8 per kilogram in July 2008 while average price for dry beans declined from KSh 63.84 per Kilogram to KSh 60.35 per kilogram over the same period with Korokocho and Kikomba markets reporting the highest prices for maize and beans, respectively in July 2008.

b). International Trade

Quantity of coffee exported increased by 7.6 per cent from 3,094.6 MT in August 2008 to 3,348.0 MT in September 2008. The value of coffee exported increased by 6.1 per cent from KSh 759.0 to KSh 805.0 over the same period.

Quantity of tea exported declined significantly by 24.9 per cent from 33,043.3 MT in August 2008 to 24,829.6 MT in September 2008 while its value declined by 14.2 per cent from KSh 5,811.1 million to KSh 4,986.1 over the same period.

Quantity of horticultural produce exported increased by 4.4 per cent from 14,928 MT in September 2008 to 15,579 MT in October 2008. Export value of horticultural produce increased by 12.6 per cent from KSh 3.5 billion to KSh 4.0 billion over the same period. The increase in horticultural produce exported may be attributed to an increase in cut flowers and vegetables produced. The significant decline in cut flowers by 27.5 from KSh 3,581.6 million in October 2007 to KSh 2,596.1 million in October 2008 reflects the economic recession being experienced in regions which consumes cut flowers.

Volume of trade increased marginally from KSh 102.4 billion in August 2008 to KSh 103.5 billion in September 2008. Total exports declined 4.3 per cent while imports increased marginally by 2.9 per cent over the same period.

Domestic exports by Broad Economic Category (BEC) indicate that food and beverages and non-food industrial supplies greatly contributed to the decline in exports in September 2008. However, the share of export of consumer goods not elsewhere specified, fuel and lubricants, and machinery and other capital equipment increased marginally over the same period.

Imports by Broad Economic Category (BEC) indicate that imports shares of Fuel and lubricants, and non-food industrial supplies and machinery and other capital equipment increased in September 2008. However, the share in import bill of transport equipment declined from a share of 16.47 per cent in August 2008 to a share of 6.15 per cent in 2008.

c). Energy

Total electricity generation declined marginally from 564.2 million KWh in July 2008 to 561.5 million KWh in August 2008. The share of hydro generation stood at 55.9 per cent while geothermal and thermal generation had a share of 16.7 and 27.4 per cent, respectively in August 2008. Total domestic consumption of electricity rose by 11.0 per cent from 423.3 million KWh in July 2008 to 470.0 million KWh in August 2008. Power losses improved from 137.3 million KWh to 89.4 million KWh over the same period.

Exports of electricity to Uganda declined from 3.59 million KWh in July 2008 to 2.14 million KWh in August 2008 while total imports of electricity from Uganda and Tanzania increased from 1.7 million KWh to 2.2 million KWh over the same period.

Total consumption of petroleum products stood at 222.1 thousand MT in September 2008 compared to 268.8 thousand MT in September 2008.

In the domestic market, on average retail prices for motor gasoline, light diesel oil and illuminating kerosene declined from the retail price of KSh 106.85, KSh 100.77 and KSh 84.52 per litre in September 2008 to retail at KSh 102.12, KSh 98.09 and KSh 82.61 per litre in October 2008, respectively. In Nairobi, the price of motor gasoline and light diesel were retailing at KSh 100.36 and KSh 97.73 per litre in October 2008 down from KSh 104.56 and KSh 97.73 per litre in September 2008, respectively.

In the international market, the price of Murban crude oil declined by 29.4 per cent from US Dollars 98.05 per barrel in September 2008 to US Dollars 69.25 per barrel in October 2008.

d). Manufacturing and, building and construction

Domestic production of sugar increased from the lowest recorded in the year of 21,130 MT in August 2008 to 40,567 MT in September 2008 while production of soft drinks increased by 9.1 per cent from 20,659 MT in July 2008 to 22,545 MT in August 2008.

Production of new assembled vehicles declined by 14 vehicles from 468 assembled vehicles in July 2008 to 454 assembled vehicles in August 2008 while production of galvanized sheets declined marginally from 15,247 MT to 15,295 MT over the same period.

Quantity of cement produced increased marginally from 268.6 thousand MT in July 2008 to 270.8 thousand MT in August 2008. Consumption of cement increased by 7.3 per cent from 249.1 thousand MT in August 2008 to 267.3 thousand MT in September 2008.

Milk deliveries in the formal milk sector declined by 5.4 per cent from 33.6 million litres in August 2008 to 31.8 million litres in September 2008.

e). Tourism and Transport

The number of visitors who arrived through Jomo Kenyatta International Airport (JKIA) and Moi International Airport declined by 11.6 per cent from 75,971 visitors in August 2008 to 67,162 visitors in September 2008.

The number of passengers who embarked at Jomo Kenyatta International Airport (JKIA) increased significantly by 33.9 per cent from 131,016 persons in July 2008 to 175,441 persons in August 2008 while passengers who landed increased by 17.5 per cent from 133,183 persons to 156,430 persons over the same period.

Total number of vehicles registered increased by 3.9 per cent from 12,210 vehicles in September 2008 to 12,712 vehicles in October 2008.

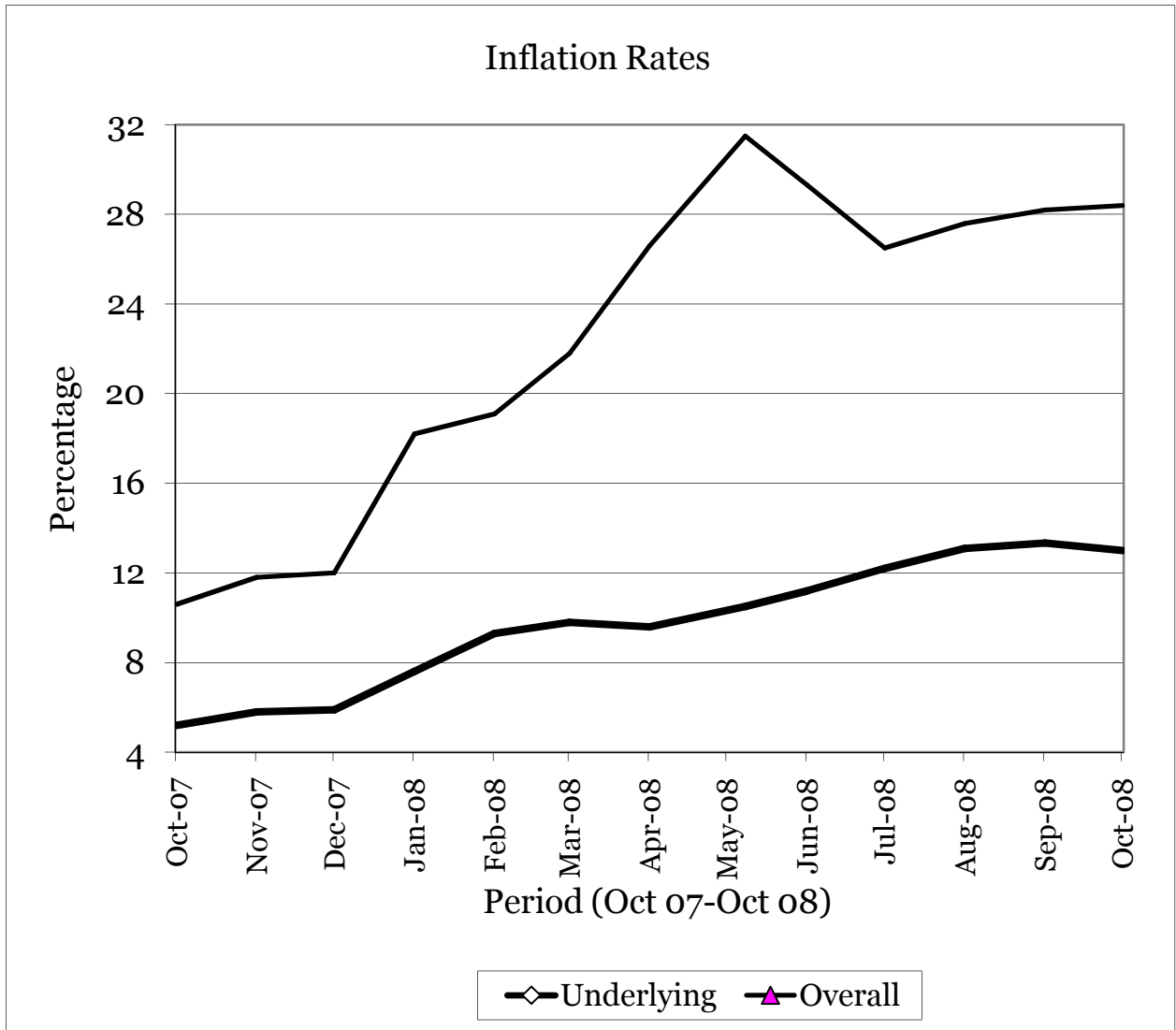
TABLE 1: KENYA CONSUMER PRICE INDICES AND INFLATION RATE

	Base Oct 1997=100.				
PERIOD	NAIROBI INDEX	REST* OF URBAN TOWNS INDEX	OVERALL KENYA INDEX	OVERALL MONTH ON MONTH INFLATION	UNDERLYING INFLATION RATE****
2007					
September	230.29	226.74	228.16	11.7	5.1
October	230.93	229.37	229.99	10.6	5.2
November	233.73	232.99	233.28	11.8	5.8
December	242.14	238.26	239.81	12.0	5.9
2008					
January	266.28	257.39	260.94	18.2	7.6
February	267.04	265.92	266.37	19.1	9.3
March	277.61	274.40	274.55	21.8	9.8
April	282.38	281.55	281.88	26.6	9.6
May	293.43	290.69	291.79	31.5	10.5
June	287.09	293.17	290.75	29.3	11.2
July	285.15	287.60	286.62	26.5	12.2
August	286.94	288.80	288.06	27.6	13.1
September	293.65	291.86	292.57	28.2	13.3
October	297.15	294.20	295.38	28.4	13.0

Source: Kenya National Bureau of Statistics

* Rest of Urban include: Nyeri, Mombasa, Malindi, Kilifi, Meru, Garissa, Kisii, Kisumu, Nakuru, Kitale, Kabarnet, and Kakamega.

FIG. 1: OVERALL MONTH ON MONTH AND UNDERLYING INFLATION RATES



**TABLE 2: MEAN FOREIGN EXCHANGE RATES OF KENYA SHILLINGS AGAINST SELECTED MAJOR CURRENCIES
AT THE END OF THE MONTH**

TABLE 2

CURRENCY	2007				2008									
	Sep	Oct	Nov	Dec	Jan	Feb	Mar	Apr	May	June	July	Aug	Sep	Oct
1 US Dollar	66.971	67.114	64.424	62.541	70.561	70.639	62.766	62.136	62.029	64.694	67.318	68.733	73.219	79.653
1 Sterling Pound	135.309	138.852	132.808	124.785	140.365	140.111	124.453	122.281	122.574	128.960	133.254	125.944	132.104	130.221
1 EURO	94.784	96.827	94.939	89.853	104.930	106.702	98.829	97.007	96.160	102.157	104.980	101.394	105.277	101.994
100 Japanese Yen	58.132	58.505	58.404	55.237	66.217	66.399	62.924	60.010	58.855	61.082	62.248	63.064	70.030	81.201
1 SA Rand	9.729	10.241	9.430	9.015	9.668	9.493	7.736	8.135	8.226	8.210	9.117	8.937	8.792	7.920
USHS/KES	26.079	25.882	27.040	27.198	24.447	23.995	26.845	27.054	26.278	25.059	24.213	23.933	22.815	23.603
TSHS/KES	18.366	17.359	18.169	17.964	16.512	16.592	19.142	19.458	19.322	18.263	17.388	16.928	15.932	16.352

* Mean of commercial banks buying and selling exchange rates prevailing at the end of the month

'Source: Kenya National Bureau of Statistics

FIG 2: END OF MONTH MEAN EXCHANGE RATE OF KENYA SHILLINGS AGAINST MAJOR SELECTED CURRENCIES

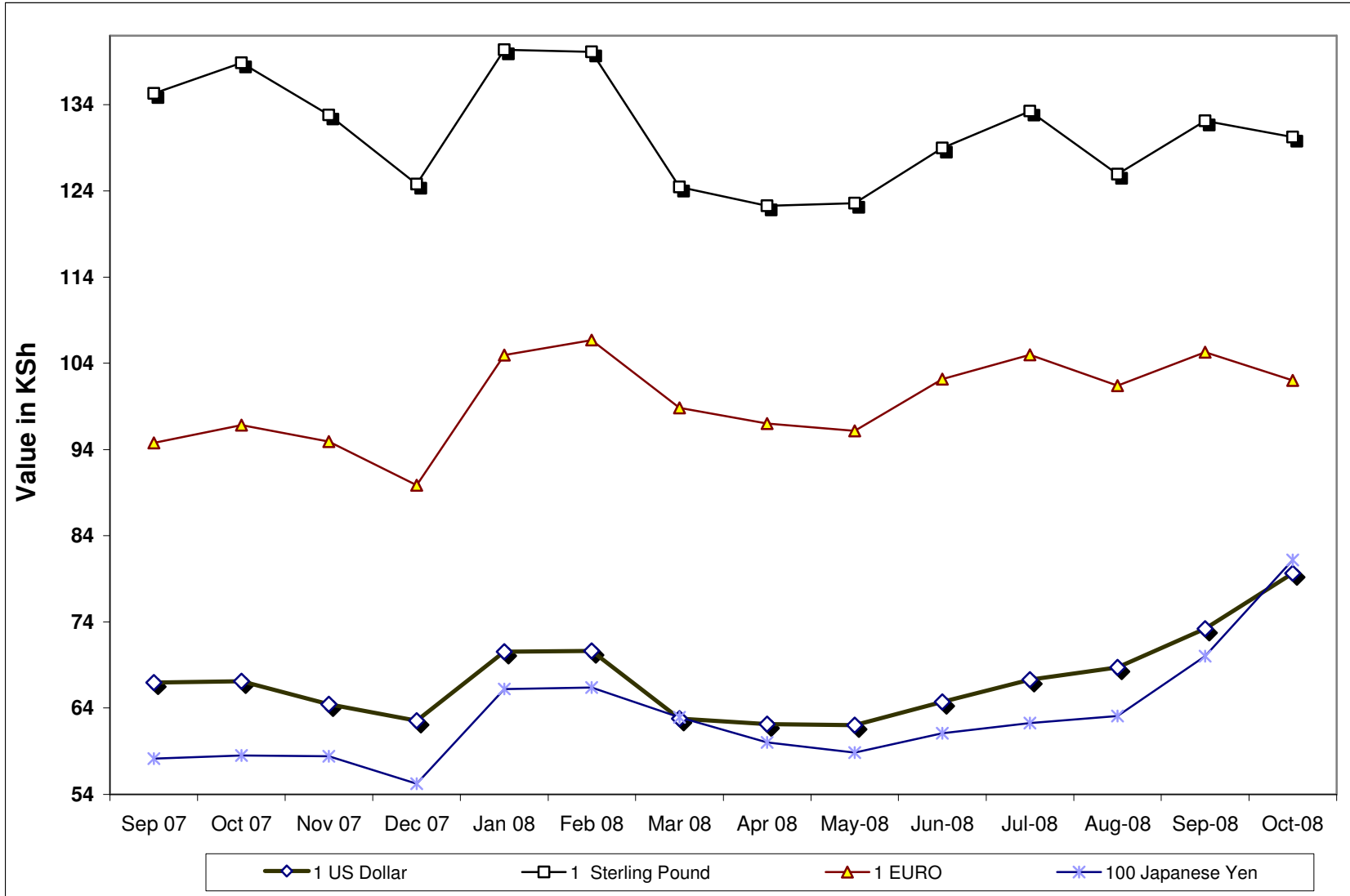


Table 3: Interest Rates (%)

MONTHS	Average Yield Rates 91 - Days Treasury Bills	Rates for Commercial Banks Loans and Advances (Weighted Average)	Overdraft Rates	Inter - Bank Rates	Savings (Commercial Banks Rates)
2007					
August	7.30	13.04	13.39	7.38	1.60
September	7.35	12.87	13.26	7.59	1.67
October	7.55	13.24	13.29	7.65	1.64
November	7.52	13.39	13.43	6.50	1.65
December	6.87	13.32	12.96	7.05	1.67
2008					
January	6.99	13.78	13.41	7.61	1.72
February	7.28	13.84	13.26	7.21	1.70
March	6.89	14.06	13.48	6.35	1.72
April	7.35	13.91	13.46	6.70	1.71
May	7.76	14.01	13.53	7.72	1.71
June	7.73	14.06	13.30	7.77	1.70
July	8.03	13.90	13.46	8.06	1.67
August	8.02	13.66	13.11	6.93	1.68
September	7.70	13.66	13.43	6.70	1.73
October	7.75	14.12	13.91	6.81	1.74

Source : Central Bank of Kenya

- data not available

FIG 3: INTEREST RATES

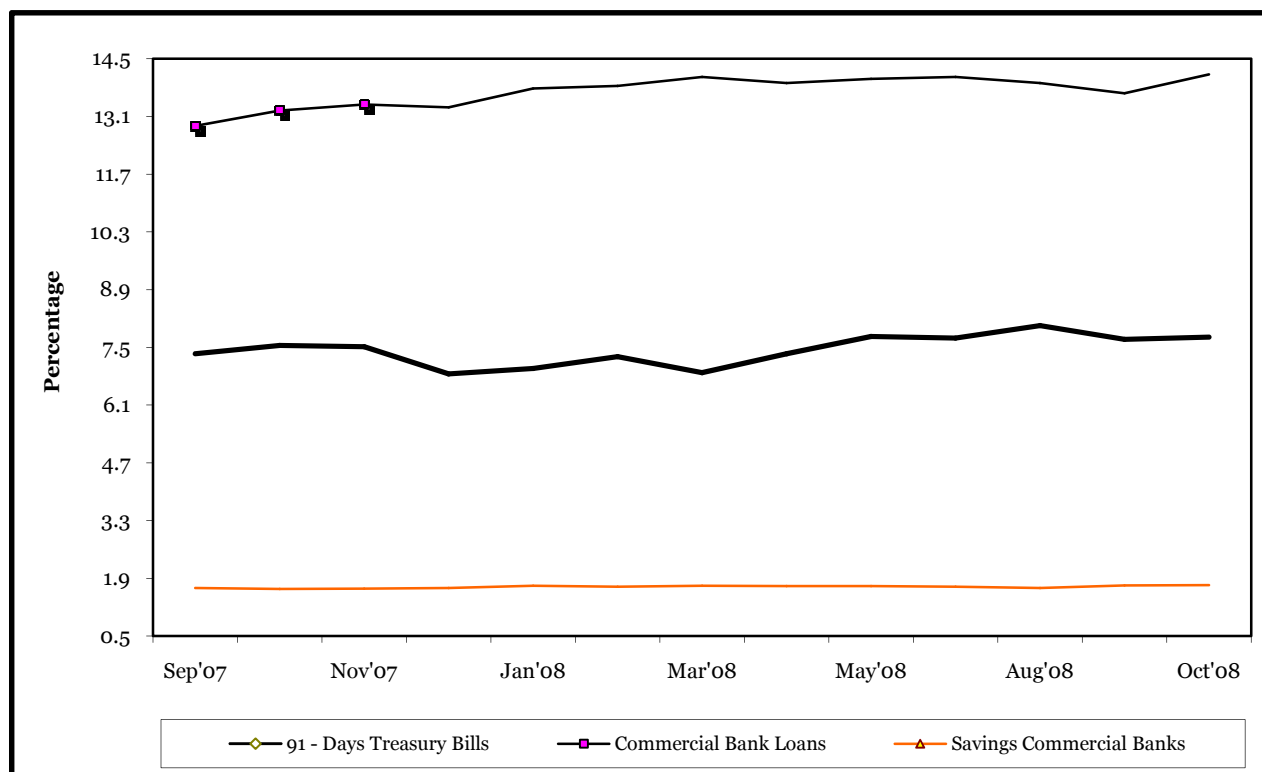


TABLE 4: CAPITAL MARKETS – NAIROBI STOCK EXCHANGE

MONTH	NUMBER OF TRANSACTIONS	NUMBER OF SHARES ('000)	VALUE OF SHARES ('000 KShs)	SHARES INDEX Base Jan 1966=100
Oct-07	86,422	183,611	7,214,017	4,971.0
Nov-07	73,780	185,853	7,914,802	5,234.5
Dec-07	53,106	140,806	6,017,989	5,444.8
Jan-08	69,754	197,138	7,046,138	4,712.7
Feb-08	74,615	198,833	8,011,260	5,072.4
Mar-08	60,038	180,644	7,320,547	4,843.2
Apr-08	57,526	141,766	5,635,570	5,336.0
May-08	71,959	168,034	6,836,652	5,175.8
Jun-08	143,942	2,154,897	22,130,018	5,185.6
Jul-08	132,507	983,747	14,282,189	4,868.3
Aug-08	83,372	490,810	7,490,223	4,648.8
Sep-08	66,060	485,283	6,787,824	4,180.4
Oct-08	44,190	393,530	3,642,410	3,386.7

Source : Nairobi Stock Exchange

** Provisional

FIG 4: NAIROBI STOCK EXCHANGE SHARES INDEX

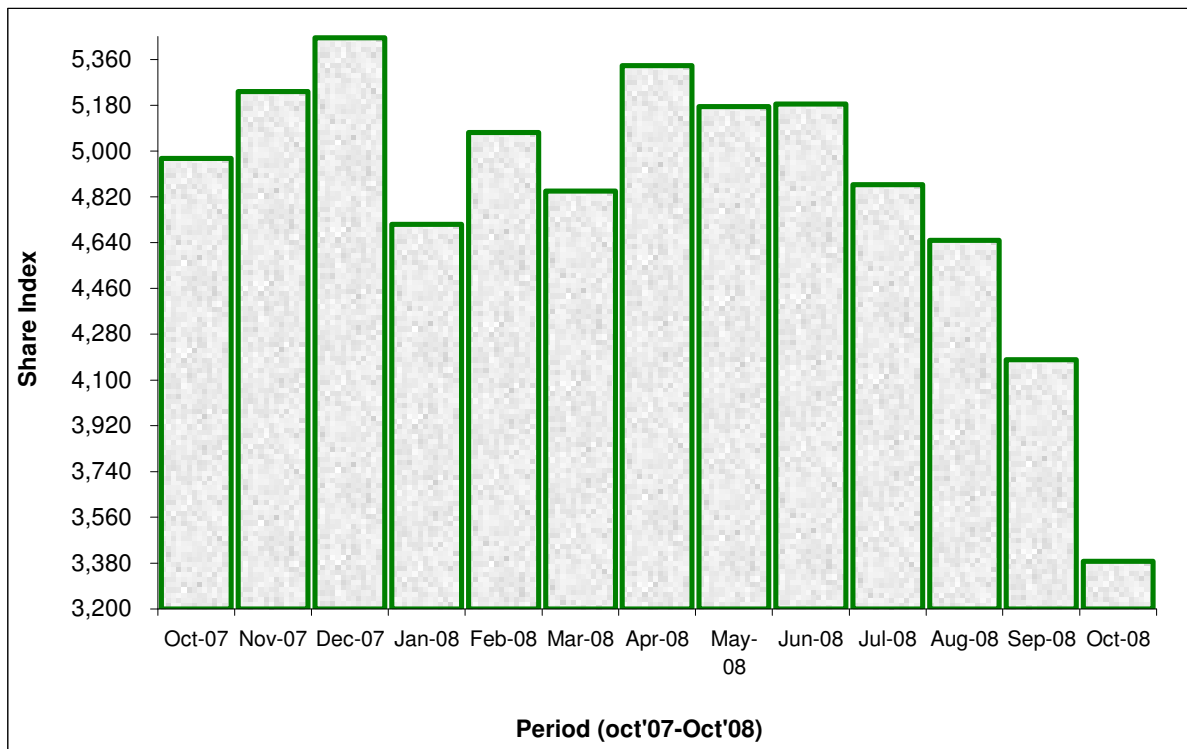


TABLE 5 (a): MONEY SUPPLY

KSh Million

As at end of	MONEY AND QUASI MONEY (M2)				BROAD MONEY (M3)	% CHANGE*** *
	MONEY (M1)*	QUASI - MONEY		TOTAL (M2)		
		(Commercial Banks)**	(NBFIs)			
2007						
August	352,317	265,706	11,025	629,048	730,511	2.37
September	349,774	270,440	10,927	631,141	733,329	0.39
October	350,741	275,024	11,877	637,642	739,663	0.86
November	360,486	274,171	11,888	646,545	745,268	0.76
December	373,310	281,635	11,930	666,875	777,596	4.34
2008						
January	378,042	293,665	10,557	682,264	801,248	3.04
February	378,872	303,175	10,316	692,363	810,207	1.12
March	380,141	307,142	9,859	697,142	811,214	0.12
April	436,622	302,408	12,978	752,008	864,105	6.52
May	395,158	304,077	11,995	711,230	839,239	-2.88
June	391,824	314,762	12,723	719,309	840,679	0.17
July	382,174	325,353	12,633	720,160	850,412	1.16
August	383,424	328,254	12,678	723,694	854,952	0.53
September	385,004	338,783	12,677	736,325	859,328	0.51
October	398,727	342,978	12,489	754,036	883,892	2.86

Source : Central Bank of Kenya

* Currency in circulation less cash in banks plus all demand deposits except those of Central Government, Local Govt, Banks, non residents and foreign currency deposits.

** All other deposits in commercial banks except those of Central Government.

*** Broad Money (M3) includes M2 and Quasi - Money supplied by Non Bank Financial Institutions

**** Compared with previous month.

***** Provisional

*****From January 2006 in line with the harmonisation of definitions of monetary aggregates within East African Countries(EAC) monetary definitions have been redefined for the following aggregates.

1. Base money =currency outside banks plus deposits at the Central Bank

FIG 5: MONEY SUPPLY (M3)

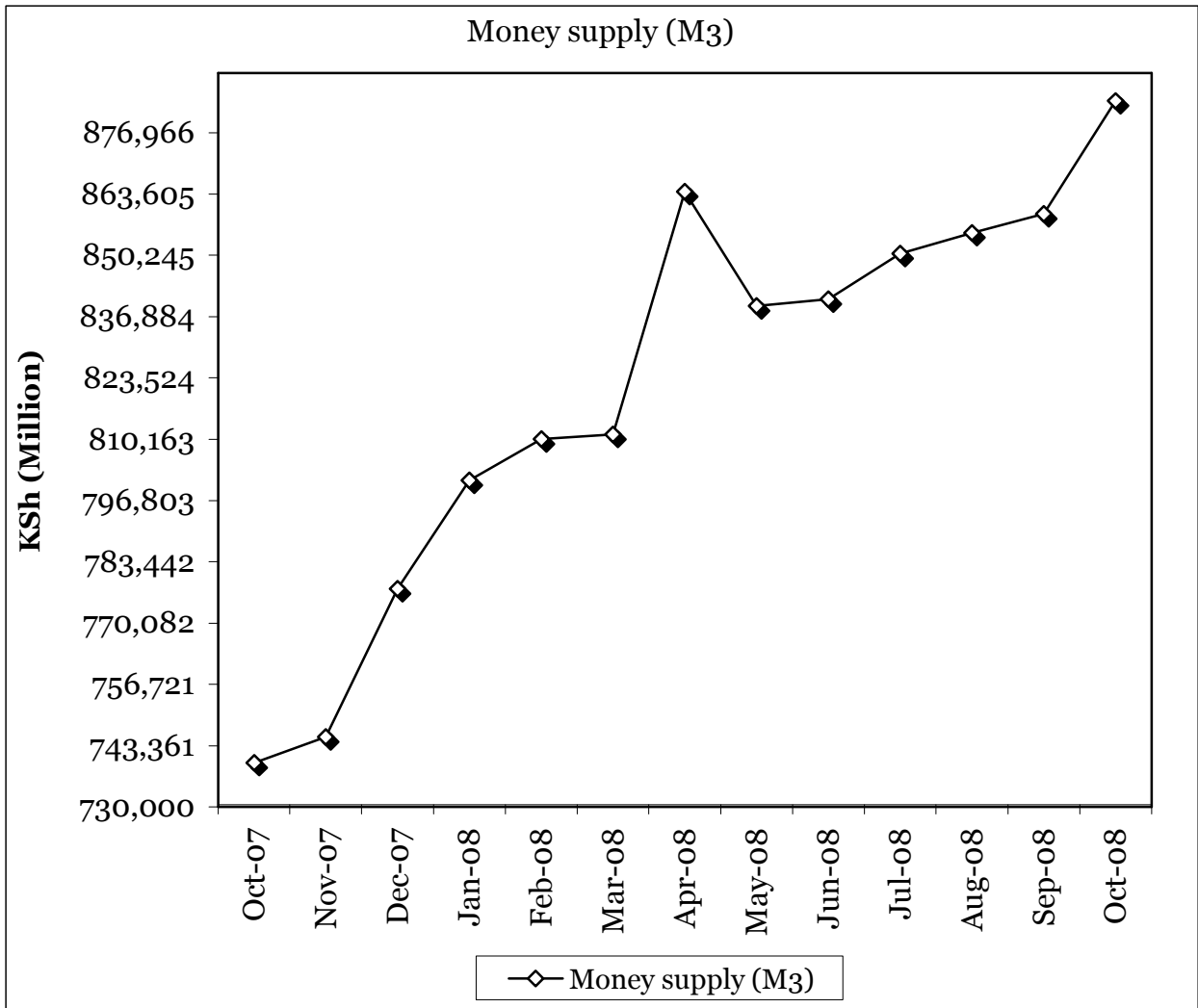


TABLE 5b: FOREIGN EXCHANGE RESERVES

MONTHS	CENTRAL MONETARY AUTHORITY			COMMERCIAL BANKS	GROSS TOTAL	NET FOREIGN EXCHANGE
	CENTRAL BANK	CENTRAL GOVERNMENT	TOTAL			
2007						
September	188,562	1,344	189,906	70,297	260,203	225,993
October	191,265	1,344	192,609	76,392	269,001	227,139
November	191,310	1,344	192,654	70,747	263,401	219,822
December	228,677	1,265	229,942	75,343	305,284	255,775
2008						
January	249,055	1,450	250,505	74,449	324,954	278,808
February	239,306	1,450	240,756	74,333	315,089	267,261
March	216,034	1,450	217,484	83,026	300,510	251,014
April	211,637	1,372	213,009	98,622	311,631	263,236
May	214,110	1,372	215,482	112,211	327,693	280,192
June	223,401	1,372	224,773	151,481	376,254	292,664
July	229,791	1,372	231,163	162,483	393,646	292,767
August	224,770	1,395	226,165	139,078	365,243	279,060
September	223,144	1,395	224,539	136,265	360,804	258,250

Source : Central Bank of Kenya

* Central Government includes reserve position in the Fund and deposits with Crown Agents.

- data not yet available

* Provisional

FIG 6: FOREIGN EXCHANGE RESERVES

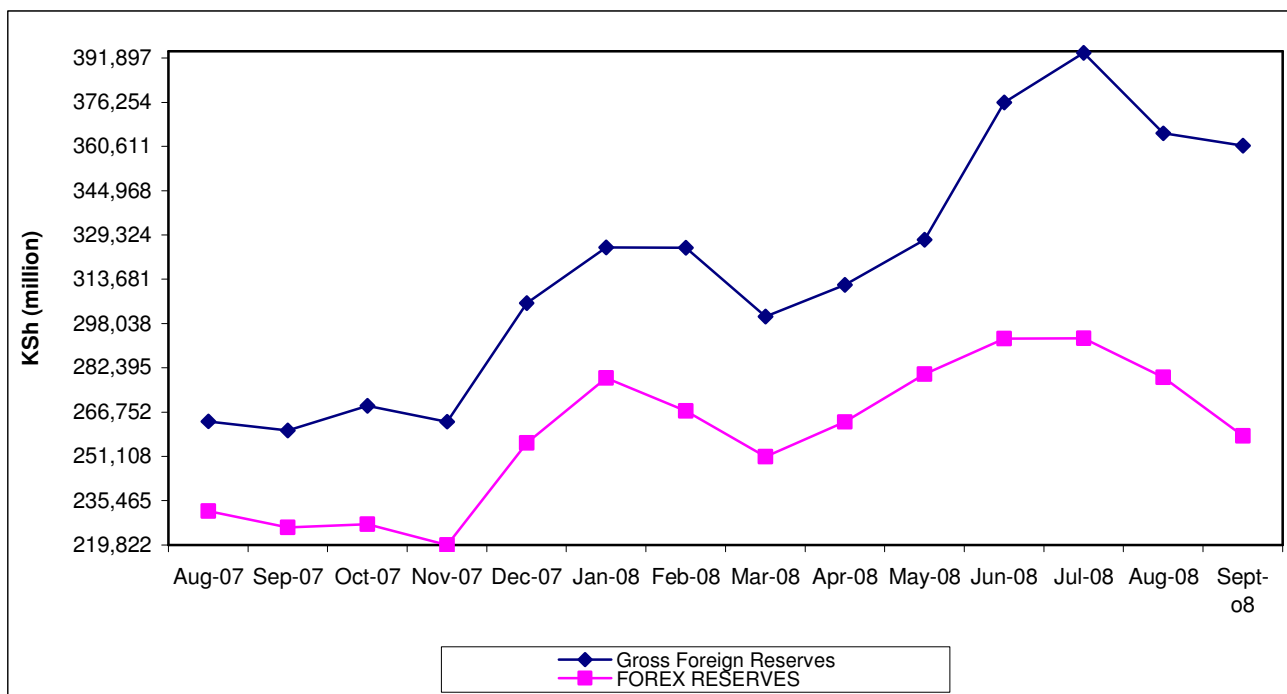


TABLE 6: COFFEE SALES AND PRICES

Months	2007			2008***		
	QUANTITY (MT)	PRICE (\$ /kg)	PRICE (Ksh /kg)	QUANTITY (MT)	PRICE (\$ /kg)	PRICE (Ksh /kg)
January	4,670	2.88	201.48	2,344	2.89	203.63
February	5,064	3.03	211.04	4,899	3.12	220.19
March	6,839	2.99	207.62	6,117	3.09	193.98
April	6,324	2.67	182.91	6,374	2.72	169.14
May	6,991	2.47	166.41	3,179	2.34	144.93
June	5,451	2.18	145.61	-	-	-
July	4,669	2.11	141.77	1,957	2.64	177.50
August**	0	0	0	2,173	2.61	179.50
September	3,817	2.36	157.96	3,878	2.37	173.56
October	4,252	2.24	150.18			
November	2,895	2.21	142.15			
December	1,296	2.86	178.73			
Annual	52,269	2.56	173.91			

Source : Coffee Board of Kenya

* Auction Price

** Nairobi Coffee Exchange was in recess for most of August 2003, 2005,2006,2007&June 2008

*** Figures subject to revision

NB: MT denotes Metric Tonnes

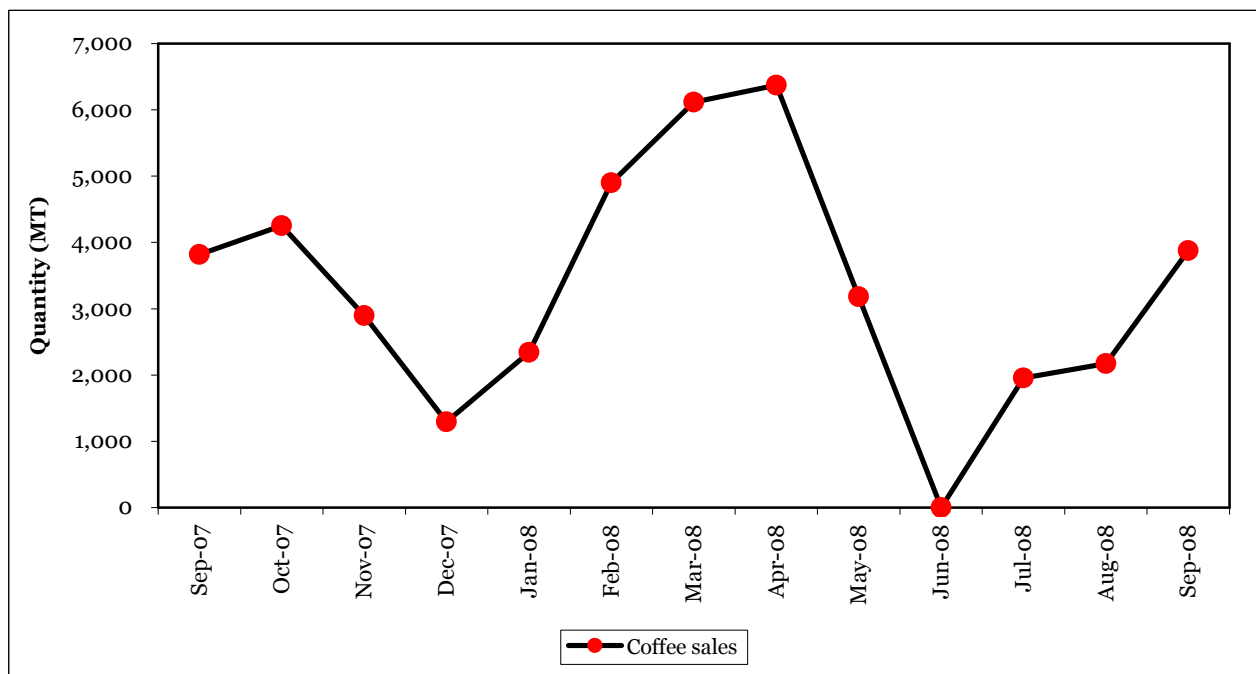
FIG.7: COFFEE SALES AT THE NAIROBI COFFEE EXCHANGE

TABLE 7: TEA PRODUCTION AND PRICES*

Months	2007			2008**		
	QUANTITY	PRICE*	PRICE*	QUANTITY	PRICE*	PRICE*
	(MT)	(\$/kg)	(KShs/kg)	(MT)	(\$/kg)	(KShs/kg)
January	41,606	1.80	125.39	29,745	2.28	153.94
February	34,839	1.75	121.57	24,094	2.42	169.94
March	32,256	1.70	117.86	16,916	2.21	145.10
April	30,672	1.65	113.31	27,415	2.31	143.67
May	32,075	1.65	110.54	36,402	2.28	140.85
June	27,333	1.75	116.25	22,817	2.43	154.16
July	22,742	1.74	116.29	24,239	2.55	169.00
August	22,752	1.75	118.00	24,494	2.77	187.60
September	28,953	1.87	125.17	32,061	2.81	195.36
October	35,210	1.87	124.99			
November	32,336	1.80	118.78			
December	28,832	1.85	118.78			
Annual	369,605	1.77	119.24			

Source: Tea Board of Kenya

MT for Metric Tonnes

*Auction prices

**Figures subject to revision

FIG.8: TEA PRODUCTION

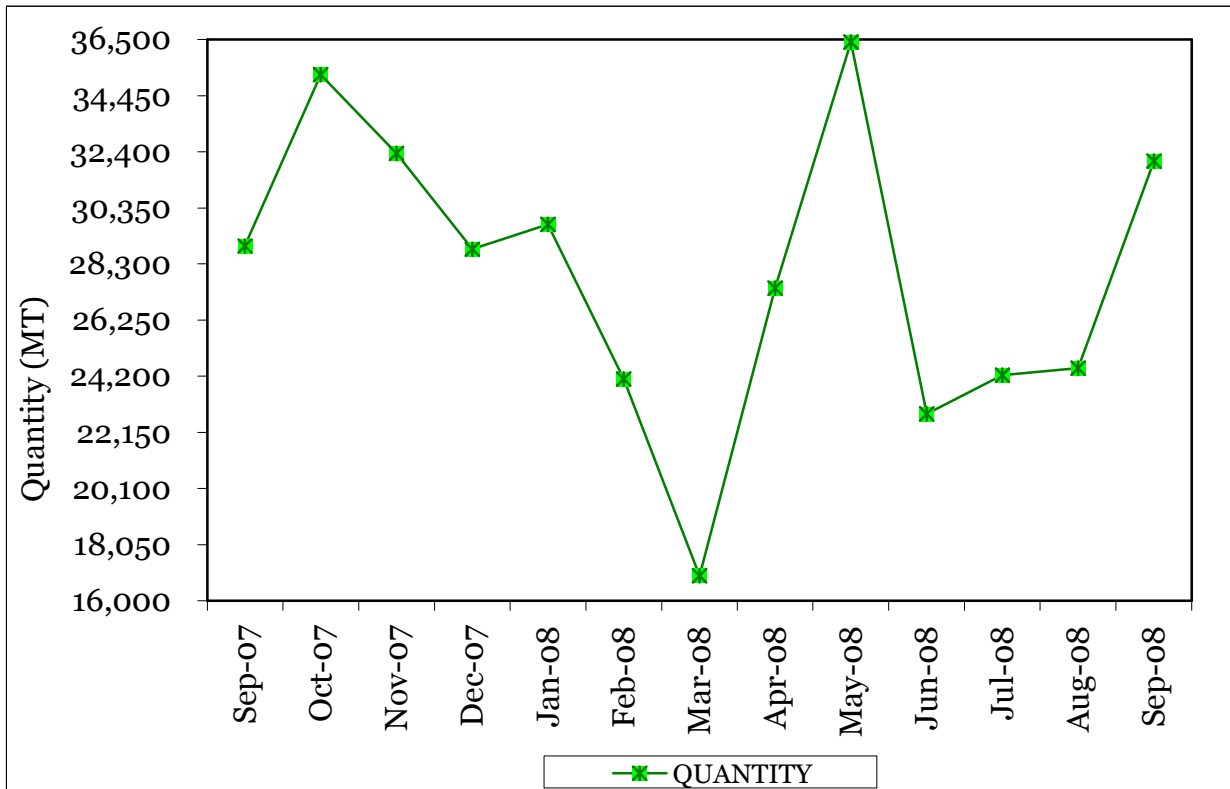


Table 8(a): AVERAGE MONTHLY RETAIL PRICES FOR DRY MAIZE IN THE YEAR-2007

Ksh. Per Kg.

MARKETS	Jan	Feb	March	April	May	JUNE	JULY	August	Sep	Oct	Nov	Dec
KIAMBU	17.39	16.67	16.67	14.29	16.67	11.90	11.90	11.90	9.52	9.52	9.52	-
LIMURU	15.00	15.00	15.00	15.00	15.00	15.00	16.18	16.12	16.00	15.00	15.00	-
THIKA	18.18	19.05	19.05	19.05	19.05	18.18	19.05	18.18	18.18	18.18	18.18	-
GATUNDU	18.34	16.67	14.29	16.67	15.78	14.29	10.00	17.50	-	19.05	-	-
MUTHITHI	11.90	11.90	10.71	9.52	10.24	10.72	13.33	-	-	-	-	-
MUKUYU	17.55	15.79	15.79	15.00	19.05	15.79	12.50	12.50	-	-	-	14.29
KIRIAINI	16.67	16.67	16.67	16.67	14.29	14.29	14.29	14.29	14.29	-	-	14.29
ENGINEER	18.00	16.67	16.25	15.00	16.67	20.00	18.63	15.00	15.00	15.00	15.00	-
NYERI	19.05	16.67	16.67	14.29	14.29	19.05	19.05	14.29	14.29	14.29	-	-
ENDARASHA	16.67	17.86	19.05	20.00	19.05	-	-	-	-	-	-	-
KARATINA	15.91	16.29	13.64	13.33	14.29	17.50	13.33	14.29	15.00	15.00	15.00	-
GAKINDU	16.67	17.50	17.50	14.29	17.50	12.50	14.29	17.50	17.50	14.29	14.29	-
NANYUKI	20.00	20.00	20.00	20.00	20.00	20.00	17.00	17.00	20.00	20.00	20.00	-
NYAHURURU	17.50	15.95	14.59	12.00	12.00	22.50	11.90	14.29	-	-	-	-
MARIAKANI	20.00	20.00	18.00	20.00	18.00	18.00	18.00	17.00	17.00	17.00	17.00	18.00
KALOLENI	20.00	20.00	17.00	17.00	17.00	18.00	18.00	17.00	17.00	17.00	14.00	18.00
MALINDI	20.00	17.21	20.00	-	20.00	20.00	20.00	20.00	-	-	-	-
KIBAUNI KILIFI	21.00	20.00	18.00	18.00	17.00	16.50	17.00	17.00	17.00	17.00	-	18.00
UKUNDA	35.00	35.00	38.00	35.00	35.00	30.00	25.00	25.00	-	-	-	-
WUNDANYI	-	-	14.00	14.00	13.00	-	-	-	-	-	-	-
MWEMBE TAYARI	20.00	20.00	23.67	30.00	20.00	20.00	20.00	18.00	-	-	-	-
SEGA	20.00	20.00	20.00	22.00	20.00	-	-	-	-	-	-	-
KONGOWEA	15.00	15.00	-	15.00	14.00	14.50	14.00	-	-	-	-	-
GARSEN	-	20.00	25.00	-	-	-	20.00	20.00	25.00	-	-	-
BURA TANA	20.00	20.00	20.00	40.00	20.00	-	-	-	-	-	-	-
RUNYENJES	17.50	17.50	15.00	15.00	15.00	12.50	10.00	12.50	12.50	12.50	15.00	12.50
EMBU TOWN	17.50	17.50	15.00	12.50	12.50	12.00	12.50	12.50	12.50	12.50	15.00	15.00
SIKAGO	20.00	17.50	12.50	12.50	12.50	-	11.75	11.50	11.50	15.00	15.00	15.00
MWINGI	15.00	16.00	15.00	8.00	-	15.00	15.00	10.00	15.00	-	-	-
MIGGWAINI	17.00	16.00	7.27	10.00	10.00	10.00	12.00	12.00	-	12.00	13.00	-
MACHAKOS TOWN	18.18	-	12.00	12.00	5.71	10.00	10.00	12.00	12.00	13.00	-	-
TALA	12.00	9.77	9.38	9.50	10.00	9.52	9.00	20.00	10.00	10.00	-	-
MAUA	-	25.00	16.25	12.50	15.00	13.75	12.50	-	-	-	-	-
KIANJAI	17.78	17.78	10.00	12.50	11.11	11.11	8.89	-	-	-	-	-
GAKOROMERE	16.00	13.64	8.00	9.09	9.09	10.91	9.09	9.09	9.09	12.00	11.82	11.82
WOTE	17.00	15.00	14.00	11.00	11.00	12.00	12.00	12.00	14.00	14.00	-	17.00
GARISA TOWN	29.63	16.67	16.67	16.67	16.67	16.67	16.67	-	15.00	-	-	-
DARAJA MBILI	13.33	14.29	13.64	14.29	14.29	13.64	12.83	11.36	13.33	14.29	9.52	17.62
KIBIRIGO	16.67	-	-	-	-	16.67	11.90	-	13.33	-	-	-
NYANGUSU	14.29	9.11	10.87	11.90	13.10	10.04	10.87	11.90	9.52	14.29	11.90	13.33
RIOCHANDA	13.33	-	-	-	22.62	-	-	16.67	-	-	-	-
NYABITE	15.48	-	-	-	14.29	-	-	14.29	-	-	-	-
MOGONGA	12.38	10.87	10.43	11.90	12.38	13.33	11.74	9.52	9.52	11.90	15.00	14.29
NYAMACHE	14.29	12.10	10.00	14.29	11.90	11.56	10.87	11.90	11.90	-	12.38	14.29
KIBUYE	16.67	14.09	14.32	15.71	-	-	-	-	-	-	-	-
AHERO	-	-	-	-	-	-	-	-	-	-	-	16.67
KIBOSWA	16.19	15.71	14.09	15.24	-	-	-	-	-	-	-	-
SONDU	14.55	13.64	13.64	-	-	-	-	-	-	-	16.67	16.67
BONDO	15.00	15.40	17.50	17.50	14.07	15.00	15.00	16.50	16.50	16.50	16.50	-
OYUGIS	12.38	13.33	-	-	16.19	-	15.71	-	-	-	-	-
KEHACHA	15.91	13.64	-	-	-	-	-	-	-	-	-	-
KABARNET	15.00	-	15.00	15.00	15.56	15.00	-	-	-	-	-	-
NAKURU TWON	22.22	22.22	22.22	22.22	22.22	22.22	22.22	22.22	22.22	22.22	22.22	22.22
KAPSABET	13.04	13.04	13.04	14.29	15.22	15.22	16.67	-	-	-	-	-
KITALE	-	17.50	16.50	14.29	15.00	14.76	17.50	17.50	17.50	-	-	-
ELDOROT	13.33	13.18	13.64	15.24	18.50	17.50	19.00	17.50	14.00	15.00	14.00	12.50
BURN FOREST	-	10.40	13.46	16.67	11.00	0.50	20.00	13.50	12.80	14.00	14.00	12.00
TURBO	11.43	11.15	10.00	11.43	11.90	17.62	14.00	17.20	16.80	12.00	12.00	-
KIPKAREN	12.86	12.03	12.00	15.00	16.50	17.50	17.50	17.50	16.50	10.40	13.95	10.80
ITEN	11.90	25.00	26.25	11.90	-	-	-	-	20.00	17.50	-	-
KAJIADO TOWN	20.00	20.00	-	20.00	20.00	20.00	20.00	20.00	25.00	20.00	25.00	-
KAPKATENY	12.52	13.67	13.56	14.29	17.14	17.14	17.14	17.62	14.29	11.90	11.90	-
BUNGOMA TOWN	14.29	13.97	13.64	15.24	13.64	-	-	-	-	14.55	13.64	14.29
KIMILILI	13.33	13.67	12.85	14.29	-	15.71	16.67	15.71	16.67	11.90	13.33	14.29
KAPSOKWONY	13.10	13.34	14.04	15.24	18.10	18.10	17.14	18.10	14.29	13.33	14.29	12.38
BUTERE	-	-	14.70	14.55	15.91	16.52	15.71	-	-	-	-	-
KAKAMEGA	13.97	13.97	13.64	15.24	15.24	16.29	15.91	13.64	13.64	12.73	13.64	13.64
MUMIAS	-	-	14.69	14.65	15.71	16.67	17.00	-	-	-	-	-
MUNDETA	14.29	14.29	14.29	14.29	15.24	15.24	15.24	14.29	14.29	-	15.24	14.29
CHEPTULA	14.29	14.29	14.29	15.24	15.24	-	14.29	13.33	-	15.24	14.29	14.29
Mbale	14.29	13.64	13.64	14.29	-	15.24	15.24	14.29	14.55	14.55	13.64	14.29
KAWANGWARE	22.00	20.00	20.00	20.00	30.00	21.05	19.05	20.00	19.05	18.10	18.28	20.00
BURMA	20.00	20.00	22.00	22.00	22.00	20.00	20.00	20.00	20.00	20.00	22.00	25.00
KIKOMBA	19.05	19.00	20.00	19.00	18.18	20.00	18.18	20.00	19.05	17.14	20.00	20.45
KANGEMI	19.49	20.50	19.05	19.00	20.00	20.00	20.00	20.00	18.18	19.05	20.00	20.45
KOROKOCHO	17.95	19.50	20.00	19.00	20.00	18.18	18.18	19.00	16.36	19.50	19.05	20.00
TOI	21.00	20.10	17.95	17.50	29.21	17.39	16.67	16.67	15.00	15.38	17.14	18.18
Overall Average Prices	16.92	16.60	15.88	16.00	16.32	15.84	15.48	15.79	15.45	15.09	15.43	15.93

- : Data not available

** Provisional results

Table 8(b): Average Monthly Retail Prices for Dry Maize in the Year 2008

Markets	KSh.per Kg						
	January	February	March	April	May	June	July
KIAMBU	20.0	20.0	20.0	19.2	25.0	30.0	26.3
LIMURU	17.5	17.5	17.5	22.5	25.0	26.3	-
THIKA	19.7	21.9	16.7	19.1	18.2	-	-
GATUNDU	17.9	23.8	23.8	19.1	19.1	-	-
MUTHITHI	19.1	14.6	-	21.1	24.9	24.0	-
MUKUYU	17.5	18.4	17.7	20.3	24.4	27.5	28.6
KIRIAINI	16.7	16.7	19.1	19.1	25.4	28.6	31.0
ENGINEER	15.0	-	15.9	-	-	-	-
NANYUKI	18.2	18.5	20.0	22.5	24.0	24.4	22.5
NYAHURURU	20.0	20.0	17.5	17.7	20.0	20.0	22.5
MARIAKANI	20.0	20.0	20.0	23.5	25.0	25.0	25.0
KALOLENI	20.0	20.0	20.7	24.5	25.0	25.0	25.0
MALINDI	27.8	27.8	27.8	26.9	28.4	30.0	-
KIBAUNI KILIFI	20.0	20.0	20.7	25.0	25.0	25.0	27.0
UKUNDA	15.0	-	-	-	-	-	-
MWEMBE TAYARI	25.0	20.0	-	-	-	-	-
SEGA	24.0	-	-	-	-	-	-
KONGOWEA	25.0	20.0	-	-	-	-	-
GARSEN	25.0	22.5	20.0	23.3	25.0	30.0	-
RUNYENJES	15.0	15.0	19.2	20.0	20.0	-	-
EMBU TOWN	17.5	18.8	15.0	20.0	20.0	-	-
SIKAGO	17.5	17.5	15.0	17.5	18.5	23.8	-
MWINGI	16.0	16.0	16.0	16.5	19.0	-	-
MIGGWAINI	-	-	14.0	14.0	17.8	21.0	-
KALUNDU	15.0	16.0	17.0	-	-	-	-
MACHAKOS TOWN	16.0	17.0	17.0	-	-	-	-
TALA	16.0	18.0	17.0	15.7	17.1	-	-
MAUA	-	-	21.3	25.0	25.0	-	-
KIANJAI	-	-	16.7	19.5	-	-	-
GAKOROMERE	13.6	16.0	12.7	13.6	15.1	-	18.2
WOTE	17.0	17.0	18.0	18.0	20.0	22.0	-
GARISA TOWN	-	-	25.0	-	30.3	-	-
DARAJA MBILI	17.3	20.5	18.6	20.0	23.0	24.5	22.7
KIBIRIGO	-	20.5	20.5	-	-	-	-
NYANGUSU	14.3	-	16.7	-	-	31.0	-
RIOHANDA	-	16.8	21.4	-	-	-	-
NYABITE	-	16.0	20.5	-	-	-	-
MOGONGA	14.3	14.3	-	-	-	31.0	-
NYAMACHE	16.7	17.1	17.5	-	-	31.0	-
KIBUYE	-	17.3	18.2	21.4	-	-	-
AHERO	23.8	22.7	-	-	-	-	-
KIBOSWA	-	19.1	20.5	-	-	-	-
SONDU	20.5	20.5	-	-	-	-	-
BONDO	-	20.0	20.0	30.0	25.0	25.5	27.5
SIAYA	22.7	16.4	19.6	-	-	-	-
NGIYA	18.2	22.7	17.3	-	-	-	-
UNGUNJA	22.7	15.2	17.3	18.2	-	-	-
OYUGIS	-	18.6	20.0	-	-	-	-
KEHACHA	-	17.5	20.0	21.2	24.4	25.0	-
KABARNET	15.0	15.0	15.0	17.2	22.8	25.0	25.0
NAKURU TWON	24.2	21.7	22.2	22.2	22.2	-	-
KAPSABET	-	19.1	19.1	25.0	23.9	25.5	25.7
KITALE	-	17.5	17.5	25.0	26.7	24.1	25.8
ELDORET	20.0	15.4	15.0	15.5	19.4	22.0	22.0
BURN FOREST	12.5	15.0	15.0	-	-	-	-
TURBO	13.3	13.4	25.0	16.7	18.5	20.7	20.7
KIPKAREN	15.0	16.0	16.1	25.0	27.0	26.3	29.4
KAJIADO TOWN	25.0	20.0	-	25.0	36.3	21.7	25.0
BUNGOMA TOWN	16.7	16.7	16.7	16.6	20.4	26.0	24.6
KIMILILI	-	-	-	16.2	21.8	27.7	27.5
KAPSOKWONY	-	16.2	17.5	-	-	-	-
BUTERE	-	23.6	17.4	23.9	23.1	24.3	-
KAKAMEGA	20.5	18.2	-	-	-	-	-
MUMIAS	-	-	28.6	26.2	23.1	23.9	-
MUNDETA	19.1	16.7	16.7	19.1	26.2	-	-
CHEPTULA	23.8	16.7	16.7	21.4	-	-	-
Mbale	23.8	16.7	-	-	-	-	-
KAWANGWARE	21.0	22.0	25.0	46.5	30.0	28.6	28.6
BURMA	25.0	25.0	25.0	32.5	25.0	25.0	33.3
KIKOMBA	21.5	22.0	22.0	23.5	26.3	35.0	35.0
KANGEMI	22.0	22.5	23.0	23.0	27.3	30.0	30.0
KOROKOCHO	20.0	20.0	21.5	23.0	21.1	26.2	38.9
TOI	21.4	21.4	23.8	23.8	26.2	28.6	28.6
Overall Average Prices	19.5	18.7	19.1	21.0	22.9	25.4	25.8

- data not available

Table 8(c): Average Monthly Retail Prices for Dry Beans Prices (2007)

MARKETS	Ksh. Per Kg.											
	Jan	Feb	Mar	April	May	June	July	Aug	Sep	Oct	Nov	Dec
KIAMBU	30.95	29.76	28.57	28.57	28.57	33.33	38.10	38.10	35.71	38.10	38.10	-
LIMURU	40.00	35.00	45.00	40.00	37.50	40.00	35.63	26.27	35.00	35.00	50.00	-
THIKA	36.36	40.00	38.10	38.10	38.10	40.00	36.36	36.36	37.50	42.86	45.00	-
GATUNDU	38.10	35.71	38.10	35.71	38.10	35.71	38.10	38.10	38.10	38.10	-	-
MUTHITHI	34.52	38.10	38.10	40.48	38.10	38.10	35.71	-	-	-	-	-
MUKUYU	34.96	33.33	38.10	38.10	34.17	33.33	33.33	33.33	-	-	-	38.10
KIRIAINI	42.86	40.91	42.86	42.86	42.86	40.48	40.48	40.48	40.48	-	-	40.91
ENGINEER	50.00	50.00	50.00	50.00	54.55	50.00	39.50	45.00	40.00	40.00	45.00	-
NYERI	42.86	40.48	41.86	42.86	42.86	47.62	47.62	38.10	47.62	47.62	-	-
ENDARASHA	47.62	47.62	47.62	60.00	57.14	-	-	-	-	-	-	-
KARATINA	40.91	45.45	31.82	33.33	40.00	47.62	38.10	40.48	60.00	50.00	50.00	-
GAKINDU	40.00	38.10	38.10	40.00	42.86	42.86	40.00	38.10	38.10	42.50	45.00	-
NANYUKI	40.00	38.18	36.36	38.89	44.44	44.44	40.00	40.00	40.00	31.82	44.44	-
NYAHURURU	32.00	40.02	40.91	41.67	40.00	40.00	42.86	42.86	-	-	-	-
MARIAKANI	40.00	40.00	40.00	38.10	40.00	40.00	40.00	40.00	40.00	40.00	40.00	40.00
KALOLENI	42.50	45.00	40.00	40.00	40.00	40.00	40.00	40.00	40.00	40.00	40.00	45.00
MALINDI	50.00	40.00	40.00	-	40.00	40.00	40.00	40.00	-	-	-	-
KIBAJUNI KILIFI	40.00	-	40.00	40.00	40.00	40.00	40.00	40.00	40.00	40.00	-	45.00
UKUNDA	46.00	48.00	48.00	48.00	48.00	48.67	47.50	50.00	-	-	-	-
WUNDANYI	-	-	50.00	50.00	50.00	-	-	-	-	-	-	-
MWEMBE TAYARI	38.00	41.00	42.00	42.00	42.00	40.00	42.00	42.00	-	-	-	-
MACKINON	35.00	35.00	-	-	-	-	-	-	-	-	-	-
SEGA	45.00	45.00	40.00	42.00	45.00	-	-	-	-	-	-	-
KONGOWEA	35.00	35.00	36.00	36.00	38.00	40.00	38.00	-	-	-	-	-
HOLA	40.00	40.00	55.00	45.00	-	-	-	-	-	-	-	-
GARSEN	-	40.00	40.00	40.00	-	-	50.00	40.00	40.00	-	-	-
BURA TANA	50.00	50.00	45.00	40.00	40.00	-	-	-	-	-	-	-
RUNYENJES	37.50	35.00	37.50	35.00	35.00	30.00	30.00	30.00	35.00	40.00	37.50	37.50
EMBU TOWN	37.50	35.00	30.00	37.50	42.50	33.33	30.00	35.00	32.50	40.00	40.00	50.00
SIKAGO	30.00	30.00	35.00	30.00	27.50	-	30.00	30.00	27.50	45.00	45.00	50.00
MWINGI	35.00	35.00	35.00	20.00	-	35.00	35.00	25.00	35.00	-	-	-
MIGGWAINI	27.27	22.73	22.73	40.00	25.00	25.00	25.00	25.00	-	40.00	45.00	-
MACHAKOS TOWN	38.89	-	35.00	36.84	40.00	40.00	35.00	40.00	40.00	40.00	-	-
TALA	35.00	24.44	25.81	27.14	28.57	40.00	38.10	33.33	38.00	38.00	-	-
MAUA	-	37.50	35.00	31.25	33.75	30.00	43.75	-	-	-	-	-
KIANJAI	30.00	27.78	27.78	31.25	24.44	24.44	35.56	-	-	-	-	-
GAKOROMERE	35.00	30.46	36.36	36.36	36.36	36.36	36.36	36.36	36.36	36.36	40.00	40.00
WOTE	35.00	35.00	35.00	40.00	40.00	35.00	40.00	42.00	42.00	45.00	-	45.00
GARISA TOWN	45.75	47.06	47.06	47.06	47.06	44.44	47.06	-	47.06	-	-	-
DARAJA MBILI	28.57	27.27	21.82	33.33	33.33	30.43	27.72	34.09	38.10	33.33	30.95	38.10
KIBIRIGO	32.67	29.55	-	-	-	38.10	38.10	-	-	-	-	-
KEROKA	-	29.55	-	-	-	-	-	-	-	-	-	-
NYANGUSU	35.00	32.31	-	35.71	21.73	22.82	19.57	23.81	23.81	23.81	28.57	26.19
RIOCHANDA	21.45	-	-	-	28.57	-	-	30.95	-	-	-	-
NYABITE	36.91	-	-	-	33.33	-	-	33.33	-	-	-	-
MOGONGA	33.33	24.00	25.00	28.57	21.43	23.16	23.00	-	30.95	28.57	30.95	30.95
NYAMACHE	30.95	26.79	28.00	-	33.33	30.20	28.13	26.19	30.95	-	28.57	28.57
KIBUYE	38.10	36.36	39.77	45.24	-	-	-	-	-	-	-	-
AHERO	-	-	-	-	-	-	-	-	-	-	47.62	47.62
KIBOSWA	40.48	37.73	41.76	52.38	-	-	-	-	-	-	-	-
SONDU	33.33	33.33	30.95	-	-	-	-	-	-	-	42.86	47.62
BONDO	45.45	46.36	46.36	50.00	34.10	45.45	45.45	54.55	59.09	54.55	54.55	-
OYUGIS	35.71	35.57	-	-	40.48	35.71	35.71	-	-	-	-	-
KEHACHA	45.00	50.00	-	-	-	-	-	-	-	-	-	-
KABARNET	30.00	-	40.00	40.00	40.00	40.00	-	-	-	-	-	-
NAKURU TWON	33.33	33.33	44.44	38.89	33.33	44.44	44.44	44.44	33.33	33.33	33.33	30.00
KAPSABET	44.99	39.07	37.35	54.55	39.13	39.13	19.05	-	-	-	-	-
KITALE	-	33.33	38.10	47.62	38.10	38.10	34.09	33.33	28.57	-	-	-
ELDOROT	38.48	36.36	36.36	31.82	40.91	38.10	40.91	45.45	40.00	45.00	45.45	45.00
BURN FOREST	35.42	32.00	29.63	-	47.62	47.62	50.00	45.45	36.36	36.36	40.91	40.91
TURBO	36.60	34.42	30.00	35.71	38.10	33.33	30.00	22.73	30.00	-	34.09	-
KIPKAREN	33.33	32.58	36.36	38.10	36.36	36.61	31.82	32.50	32.50	36.36	35.68	36.36
ITEN	38.10	38.10	38.10	-	-	-	-	-	50.00	35.00	-	-
KAJIADO TOWN	50.00	45.00	-	40.00	44.44	44.44	44.81	40.00	40.00	20.00	60.00	-
BUNGOMA TOWN	38.10	36.76	40.00	36.36	47.62	-	-	-	-	36.36	36.36	36.36
KIMILILI	28.57	30.93	30.84	30.95	-	33.33	30.00	26.19	28.57	33.33	36.36	40.91
KAPSOKWONY	32.86	33.99	36.07	38.10	38.10	38.10	38.10	34.85	-	33.33	36.36	36.36
BUTERE	-	-	29.55	35.57	34.09	30.43	33.33	-	-	-	-	-
KAKAMEGA	34.90	37.23	36.36	42.86	38.10	37.23	29.55	40.91	45.45	47.73	45.45	45.45
MUMIAS	-	-	37.37	36.23	31.41	33.33	-	-	-	-	-	-
MUNDETA	39.13	39.13	38.10	38.10	42.86	38.10	38.10	38.10	38.10	-	38.10	52.38
CHEPTULA	39.13	34.78	38.10	38.10	35.71	-	38.10	38.10	-	47.62	40.48	47.62
Mbale	41.30	41.30	39.13	42.86	-	45.24	40.91	45.45	45.45	45.45	54.55	54.55
KAWANGWARE	42.11	40.00	40.00	40.00	30.00	38.10	40.00	40.00	45.00	43.64	45.00	20.45
BURMA	45.00	42.00	80.00	40.00	40.00	40.00	40.00	40.00	40.00	42.00	42.00	45.00
KIKOMBA	41.03	40.00	40.00	38.10	42.11	40.00	39.05	38.10	36.36	38.10	40.00	40.00
KANGEMI	42.50	40.82	40.20	40.00	40.00	38.10	41.00	40.00	40.91	40.91	40.48	45.24
KOROKOCHO	40.00	40.00	40.00	40.00	38.10	39.05	40.00	40.00	38.10	40.00	40.00	40.00
TOI	40.82	40.00	40.40	40.00	40.00	38.10	38.28	38.10	40.00	42.86	21.43	45.00
Overall Average Prices	38.06	37.17	38.32	39.27	38.23	37.87	37.19	37.22	38.64	39.24	40.88	40.97

- : Data not available

Table 8(d): Average Monthly Retail Prices for Dry Beans Prices (2008)

Markets	January	February	March	April	May	June	July
KIAMBU	38.10	35.71	35.50	60.00	71.67	75.00	57.50
LIMURU	75.00	60.00	60.00	70.00	75.00	70.00	-
THIKA	55.00	54.55	54.55	45.45	60.00	-	-
GATUNDU	39.30	45.24	42.86	47.62	38.10	-	-
MUTHITHI	57.14	52.38	-	55.36	61.81	56.67	-
MUKUYU	38.10	38.10	56.06	59.09	59.14	59.09	59.09
KIRIAINI	47.83	47.83	63.64	-	60.87	60.87	66.67
ENGINEER	45.00	-	57.14	-	-	-	-
NANYUKI	40.00	42.50	50.00	65.00	46.67	69.82	70.83
NYAHURURU	39.13	50.00	56.19	63.75	67.50	38.34	60.00
MARIAKANI	50.00	60.00	60.00	60.00	63.33	70.00	70.00
KALOLENI	50.00	60.00	60.00	60.00	63.33	70.00	70.00
MALINDI	70.59	75.00	68.18	72.22	76.38	78.16	-
KIBAUNI KILIFI	60.00	60.00	65.00	53.33	66.67	70.00	68.00
UKUNDA	50.00	-	-	-	-	-	-
MWEMBE TAYARI	60.00	48.00	-	-	-	-	-
SEGA	55.00	-	-	-	-	-	-
KONGOWEA	70.00	55.00	-	-	-	-	-
GARSEN	50.00	55.00	60.00	60.00	60.00	70.00	-
RUNYENJES	45.00	41.25	68.81	55.00	57.50	-	-
EMBU TOWN	40.00	40.00	50.00	60.00	60.00	50.00	-
SIAKAGO	40.00	42.50	50.00	55.00	53.60	63.64	-
MWINGI	40.00	40.00	50.00	60.00	50.00	-	-
MIGGWAINI	-	-	40.00	55.00	55.00	55.00	-
KALUNDU	50.00	58.00	70.00	-	-	-	-
MACHAKOS TOWN	55.00	45.00	45.00	-	-	-	-
TALA	27.00	40.00	40.00	55.67	57.14	-	-
MAUA	-	-	62.50	67.81	62.50	-	-
KIANJAI	-	-	50.00	56.67	-	-	-
GAKROMERE	36.36	40.91	55.00	50.00	55.46	-	60.61
WOTE	50.00	52.50	60.00	68.00	64.50	61.50	-
GARISA TOWN	-	-	66.67	-	70.84	-	-
DARAJA MBILI	40.91	54.55	46.43	61.36	48.90	39.06	41.07
KIBIRIGO	-	45.45	47.62	-	-	-	-
NYANGUSU	28.57	-	42.86	-	-	54.55	-
RIOCHANDA	-	46.15	54.55	-	-	-	-
NYABITE	-	42.31	54.55	-	-	-	-
MOGONGA	38.10	36.36	-	-	-	54.55	-
NYAMACHE	27.27	47.62	40.18	-	-	52.27	-
KIBUYE	-	65.91	68.18	68.18	-	-	-
AHERO	61.90	61.90	-	-	-	-	-
KIBOSWA	-	77.27	76.19	-	-	-	-
SONDU	52.38	52.38	-	-	-	-	-
BONDO	-	85.00	85.00	69.17	85.00	87.50	80.00
SIAYA	54.55	53.03	90.91	-	-	-	-
NGIYA	47.17	54.55	68.18	-	-	-	-
UNGUNJA	45.45	52.27	51.14	72.73	-	-	-
OYUGIS	-	66.38	71.43	-	-	-	-
KEHACHA	-	54.55	68.18	66.67	59.09	54.55	-
KABARNET	50.00	50.00	50.00	59.59	72.32	75.00	75.00
NAKURU TWON	52.22	38.89	38.89	51.11	36.11	38.89	-
KAPSABET	-	71.43	68.18	72.73	71.02	60.87	46.52
KITALE	-	54.05	54.55	68.18	74.36	68.19	49.51
ELDORET	59.09	43.19	68.18	75.21	78.00	63.00	62.50
BURN FOREST	68.18	68.18	60.91	-	-	-	-
TURBO	42.50	53.75	-	70.00	73.75	67.00	53.00
KIPKAREN	45.45	54.55	54.55	68.18	62.50	60.60	36.97
KAJIADO TOWN	60.00	70.00	80.00	60.00	67.50	66.67	50.00
BUNGOMA TOWN	47.62	61.90	68.18	-	60.59	64.77	65.24
KIMILILI	-	-	-	46.67	67.14	66.67	80.00
KAPSOKWONY	-	40.48	47.01	-	-	-	-
BUTERE	55.80	62.29	50.79	73.91	70.51	53.02	-
KAKAMEGA	54.55	68.18	-	-	-	-	-
MUMIAS	-	-	-	70.46	70.10	58.37	-
MUNDETA	71.43	71.43	71.43	71.43	61.90	-	-
CHEPTULA	65.04	71.43	71.43	71.43	-	71.43	-
Mbale	-	65.22	-	-	-	-	-
KAWANGWARE	45.00	50.00	60.00	-	70.00	72.73	76.19
BURMA	45.00	50.00	50.00	60.00	70.00	80.00	80.00
KIKOMBA	48.00	50.00	60.00	65.00	80.00	75.00	83.33
KANGEMI	45.00	55.00	65.00	70.00	75.00	80.00	80.00
KOROKOCHO	43.50	45.00	50.00	62.50	62.50	72.73	72.73
TOI	47.62	50.00	63.64	72.73	76.19	76.19	76.19
Overall Average Prices	50.11	53.15	57.23	62.05	65.08	63.84	60.35

Table 9: Export of Coffee, Tea and Horticultural Produce

Month	COFFEE *		TEA		HORTICULTURE	
	QUANTITY	VALUE	QUANTITY	VALUE	QUANTITY	VALUE
	(MT)	(KSh. Million)	(MT)	(KSh. Million)	(MT)	(KSh. Million)
Mar-07	4,916.1	1,032.7	35,964.8	4,607.9	16,108	7,128.5
Apr-07	4,482.2	963.4	27,183.5	3,417.6	15,654	4,149.0
May-07	4,860.7	951.6	36,849.3	4,519.4	15,667	4,103.8
Jun-07	8,164.9	1,544.7	32,313.5	3,936.6	13,778	7,988.3
Jul-07	6,052.2	1,105.2	33,697.5	4,231.6	16,306	4,915.9
Aug-07	5,903.5	939.9	28,670.6	3,596.1	15,581	6,842.6
Sep-07	7,866.0	1,429.4	39,337.0	5,093.0	16,099	3,729.1
Oct-07	4,698.5	875.8	25,858.0	3,410.1	18,727	5,489.6
Nov-07	3,665.5	689.1	31,356.6	3,979.6	18,249	6,773.7
Dec-07	3,248.1	630.3	20,102.0	2,433.7	16,881	5,482.9
Jan-08	2,698.8	558.4	28,790.2	4,054.6	16,553	6,684
Feb-08	3,270.3	812.7	32,723.0	5,303.6	18,901	9,720
Mar-08	3,989.2	1,071.0	27,943.7	4,308.3	18,927	6,538
Apr-08	4,611.3	1,107.7	40,724.4	5,464.0	17,969	4,257
May-08	4,820.5	1,128.1	30,518.6	4,525.4	16,940	4,052
Jun-08	3,602.7	838.6	31,644.4	4,917.2	15,312	3,480
Jul-08	3,158.5	769.2	40,370.6	6,667.2	15,262	3,882
Aug-08	3,094.6	759.0	33,043.3	5,811.1	13,996	3,997
Sep-08	3,348.0	805.0	24,829.6	4,986.1	14,928	3,524
Oct-08	-	-	-	-	15,579	3,968

Source: Kenya Revenue Authority

- Figures not available

*Unroasted Coffee

Table 10: Monthly Exports of Horticultural Products

Months	CUT FLOWERS				FRUITS				VEGETABLES			
	2007**		2008**		2007**		2008**		2007**		2008**	
	QUANTITY (MT)	VALUE (KSh. Million)	QUANTITY (MT)	VALUE (KSh. Million)	QUANTITY (MT)	VALUE (KSh. Million)	QUANTITY (MT)	VALUE (KSh. Million)	QUANTITY (MT)	VALUE (KSh. Million)	QUANTITY (MT)	VALUE (KSh. Million)
January	7,380	3,015.93	8,494.94	5,288.07	1,224.93	195.16	533.40	63.05	5,889.41	1,415.57	7,524.88	1,332.79
February*	7,908	2,853.19	10,178.52	6,806.08	1,753.77	182.45	1,431.75	111.22	4,941.00	2,988.19	7,290.64	2,802.23
March	9,016	5,534.80	9,116.38	4,836.41	1,798.53	198.26	2,476.80	203.31	5,293.65	1,395.41	7,334.14	1,498.72
April	7,944	2,134.58	8,100.43	2,737.35	1,399.79	171.23	2,263.94	180.92	6,310.19	1,843.24	7,604.86	1,338.55
May	8,020	2,095.95	8,120.99	2,798.79	1,219.97	131.32	1,727.73	130.44	6,427.08	1,876.49	7,090.86	1,122.58
June	6,292	6,023.82	6,785.27	2,173.12	1,126.85	202.73	1,718.46	169.36	6,358.88	1,761.76	6,808.71	1,137.46
July	5,741	2,735.92	6,083.05	2,072.24	1,759.63	176.76	2,573.05	686.15	8,805.25	2,003.21	6,605.48	1,123.60
August	6,136	4,360.81	6,239.22	2,766.14	2,386.14	184.39	1,653.59	199.49	7,058.62	2,297.37	6,103.07	1,031.84
September	7,088	2,210.74	6,994.05	2,246.42	1,400.32	126.50	1,031.31	119.54	7,610.32	1,391.86	6,902.52	1,158.22
October	8,571	3,581.57	8,026.54	2,596.09	675.46	88.94	484.62	56.18	9,480.67	1,819.08	7,068.08	1,315.83
November	8,540	4,590.68			401.30	62.11			9,307.21	2,120.86		
December	8,515	3,963.55			524.77	78.06			7,840.96	1,441.26		
Total	91,152	43,102			15,671	1,798			85,323	22,354		

Source: Horticultural Crops Development Authority

- data not available

** Figures subject to revision

Table 11: Kenya's External Trade, August 2007 – September 2008

KSh million

MONTH	Domestic Exports	Re-Exports	Total Exports	Total Imports	Volume of Trade	Home use Imports
2007						
August	22,940.52	950.11	23,890.63	52,604.06	76,494.69	52,283.38
September	20,258.79	1,005.65	21,264.45	48,460.16	69,724.61	48,601.46
October	23,516.06	1,168.19	24,684.25	59,049.87	83,734.12	55,189.14
November	24,970.24	1,103.51	26,073.75	57,731.91	83,805.65	53,993.58
December	16,940.05	1,125.93	18,065.98	37,757.37	55,823.34	41,857.30
2008						
January	22,767.81	985.72	23,753.53	64,341.01	88,094.54	56,488.85
February	31,277.01	1,050.16	32,327.17	58,051.43	90,378.61	56,707.94
March	25,654.53	1,460.93	27,115.46	53,200.79	80,316.25	52,191.67
April	27,893.33	1,292.86	29,186.19	54,785.45	83,971.64	51,389.44
May	24,436.30	1,303.31	25,739.61	56,877.43	82,617.03	57,151.43
June	23,832.87	1,477.07	25,309.94	49,957.26	75,267.20	53,371.94
July	28,667.31	1,671.58	30,338.89	70,300.09	100,638.98	60,557.64
August	27,487.90	2,265.53	29,753.42	72,644.67	102,398.09	72,423.12
September	26,618.40	1,869.18	28,487.58	74,773.03	103,260.61	67,656.83

Source: Customs Department

* Provisional

Table 12: Major Destinations of Domestic Exports, September 2007 – September 2008

KSh Million											
Month	Uganda	Tanzania	United Kingdom	Pakistan	Netherlands	Egypt	Germany	Rwanda	USA	United Arab Emirates	France
2007											
September	2,523.28	1,748.56	2,320.75	898.54	1,523.81	594.43	282.15	489.78	1,303.41	740.85	445.35
October	2,645.69	1,810.40	3,063.69	550.16	2,180.57	645.14	528.35	713.51	1,562.34	1,133.98	433.64
November	3,224.78	1,952.63	2,810.58	838.45	2,046.09	857.27	571.37	540.50	1,643.20	1,203.54	452.48
December	1,766.75	1,257.42	2,025.86	535.16	1,503.12	438.06	569.63	364.82	1,341.31	570.10	299.66
2008											
January	2,599.18	1,705.11	3,423.94	791.97	2,728.84	580.95	562.45	345.54	1,241.43	545.50	426.52
February	3,292.99	1,973.99	3,853.97	1,030.52	2,878.64	1,306.73	666.82	743.15	1,975.69	804.75	372.62
March	3,063.24	1,756.01	3,118.21	683.00	2,256.37	1,545.47	591.34	505.26	1,371.59	784.62	389.71
April	3,656.76	2,130.95	2,892.92	924.21	2,044.85	2,102.05	528.64	502.74	1,634.07	845.66	429.07
May	2,564.19	1,873.91	2,998.92	1,306.61	2,005.69	663.55	421.87	439.56	1,509.75	623.16	305.94
June	2,409.80	2,173.29	2,867.54	1,171.98	2,100.71	668.94	447.39	556.14	1,661.92	517.39	362.69
July	3,810.84	2,371.58	3,187.84	2,042.81	1,692.87	990.34	372.82	792.28	1,590.02	522.07	525.91
August	3,031.60	2,402.28	2,934.22	1,264.65	1,650.31	1,483.11	301.43	947.01	2,231.04	416.56	434.38
September	3,170.79	2,493.71	2,961.86	973.01	1,812.64	1,148.08	539.78	729.96	1,911.48	435.57	441.95

Source: Customs Department

* Provisional

Table 13: Major Origins of Imports, September 2007 – September 2008

											KSh Million
Month	United Arab Emirates	United Kingdom	South africa	Saudi Arabia	Japan	India	USA	Germany	Netherlands	France	China
2007											
September	6,899.09	3,079.21	2,763.51	763.47	4,092.03	5,099.49	1,078.67	2,547.32	902.71	962.63	4,015.59
October	9,122.97	2,775.45	3,378.61	3,460.34	3,707.38	8,298.77	1,978.18	2,421.37	771.97	1,789.51	4,817.74
November	12,480.07	2,511.87	4,365.40	688.16	4,208.35	5,525.63	1,729.25	2,024.66	479.27	953.28	4,927.13
December	2,545.08	1,215.17	2,824.88	1,110.78	3,350.12	2,896.46	1,801.02	1,102.05	903.19	1,082.24	3,103.81
2008											
January	13,324.16	2,163.69	3,939.42	1,195.25	3,997.79	6,778.99	1,498.30	1,779.34	805.11	1,979.94	6,075.25
February	9,510.89	2,921.46	3,210.71	945.31	3,482.08	5,138.42	2,033.86	2,603.10	1,327.21	1,356.22	4,770.77
March	6,839.39	1,746.01	3,066.48	4,363.49	3,487.52	6,476.49	2,984.79	1,866.69	577.86	1,042.04	3,428.89
April	12,274.48	1,749.26	3,155.40	2,319.25	3,484.89	5,981.93	2,910.16	1,921.65	1,369.27	1,020.72	3,311.61
May	10,534.04	1,873.07	3,005.93	1,302.39	3,035.20	9,281.27	3,606.34	1,482.98	885.92	879.66	4,430.19
June	3,515.33	1,835.13	3,312.94	844.12	2,904.38	6,384.15	1,442.66	1,583.49	1,066.24	888.67	5,213.39
July	19,339.13	1,774.91	3,886.96	2,048.11	4,811.18	7,921.31	2,628.53	2,189.02	652.05	1,156.11	4,678.81
August	6,507.93	2,568.88	3,314.31	2,488.28	4,062.72	10,098.94	1,876.34	2,707.15	1,545.58	1,007.23	4,869.16
September	12,326.45	1,873.49	3,641.87	4,813.22	3,605.69	8,705.56	2,108.17	3,166.97	935.69	1,385.47	5,399.50

Source: Customs Department

* Provisional

Table 12 (a): Domestic Exports by Broad Economic Category

Million KSh

DESCRIPTION	2007					2008								
	Sept	October	Nov	December	Total	January	February	March	Apr	May	June	July	August	September
FOOD AND BEVERAGES	8,114	9,111	9,537	6,828	105,765	9,081	11,620	10,261	12,176	10,249	10,155	12,300	10,468	9,804
INDUSTRIAL SUPPLIES (Non-Food) ..	5,158	5,940	7,386	4,452	66,441	5,901	7,915	6,846	6,967	6,396	6,022	8,659	10,001	8,904
FUEL AND LUBRICANTS	646	737	465	251	9,346	305	1,762	352	487	378	332	268	45	423
MACHINERY & OTHER CAPITAL EQUIPMENT ..	487	526	500	366	4,427	279	676	701	674	526	225	324	323	316
TRANSPORT EQUIPMENT	270	407	278	131	3,472	167	339	235	336	232	430	385	260	264
CONSUMER GOODS NOT ELSEWHERE SPECIFIED ..	5,581	6,793	6,804	4,912	72,161	7,035	8,965	7,256	7,255	6,654	6,661	6,730	6,387	6,904
GOODS NOT ELSEWHERE SPECIFIED ..	3.00	2.00	0.00	0.00	7	0.00	0.00	4.00	0	0	8	0	4	3
TOTAL	20,259	23,516	24,970	16,940	261,619	22,768	31,277	25,655	27,893	24,436	23,833	28,666	27,488	26,618
PERCENTAGE SHARES:														
Food and Beverages	40.05	38.74	38.19	40.31	40.43	39.88	37.15	40.00	43.65	41.94	42.61	42.91	38.08	36.83
Industrial Supplies (Non-Food)	25.46	25.26	29.58	26.28	25.40	25.92	25.31	26.68	24.98	26.17	25.27	30.21	36.38	33.45
Fuel and Lubricants	3.19	3.13	1.86	1.48	3.57	1.34	5.63	1.37	1.74	1.55	1.39	0.93	0.16	1.59
Machinery and other Capital Equipment ..	2.40	2.24	2.00	2.16	1.69	1.23	2.16	2.73	2.41	2.15	0.94	1.13	1.18	1.19
Transport Equipment	1.33	1.73	1.11	0.77	1.33	0.73	1.08	0.92	1.20	0.95	1.80	1.34	0.95	0.99
Consumer Goods not elsewhere specified	27.55	28.89	27.25	29.00	27.58	30.90	28.66	28.28	26.01	27.23	27.95	23.48	23.24	25.94
Goods not elsewhere specified	0.01	0.01	0.00	0.00	0.00	0.00	0.00	0.02	0.00	0.00	0.03	0.00	0.01	0.01
TOTAL	100	100	100	100	100	100	100	100	100	100	100	100	100	100

Source: Annual Trade Report - Customs & Excise Dept.

* Provisional

- Data being verified

Table 13 (a): Imports by Broad Economic Category

Million KSh

DESCRIPTION	2007					2008								
	September	October	November	December	Total	January	February	March	Apr	May	June	July	August	August
FOOD AND BEVERAGES	2,340.00	2,649.00	2,642.00	2,888.00	42,483.1	3,647.00	4,797.00	5,313.00	3,662.9	2,712.5	2,476.0	2,258.0	3,393.0	4,125.0
INDUSTRIAL SUPPLIES (Non-Food) ..	16,221.00	18,169.00	18,533.00	15,449.00	193,819.3	20,392.00	18,137.00	14,987.00	17,444.9	15,832.1	19,185.0	19,453.0	20,072.0	21,890.8
FUEL AND LUBRICANTS	8,702.00	16,784.00	15,706.00	3,907.00	126,911.2	19,602.00	13,478.00	13,135.00	15,706.1	18,042.1	11,728.0	25,978.0	23,492.0	23,862.3
MACHINERY & OTHER CAPITAL EQUIPMENT ..	8,199.00	8,933.00	9,351.00	6,286.00	97,336.5	9,641.00	9,796.00	10,263.00	7,651.6	8,834.4	7,517.0	9,921.0	9,434.0	13,646.9
TRANSPORT EQUIPMENT	8,823.00	7,460.00	6,683.00	5,950.00	97,427.0	6,262.00	7,666.00	5,413.00	6,575.0	7,225.9	5,035.0	8,018.0	11,963.0	4,487.0
CONSUMER GOODS NOT ELSEWHERE SPECIFIED ..	3,724.00	4,900.00	4,805.00	3,273.00	44,883.8	4,793.00	4,176.00	4,072.00	3,738.4	4,057.6	4,005.0	4,375.0	4,078.0	4,688.4
GOODS NOT ELSEWHERE SPECIFIED ..	451.00	154.00	12.00	4.00	2,259.7	4.00	1.00	18.00	6.6	172.9	11.0	0.0	213.0	207.0
TOTAL	48,460	59,049	57,732	37,757	605,120.6	64,341	58,051	53,201	54,785	56,877	49,957	70,003	72,645	72,907
PERCENTAGE SHARES:														
Food and Beverages	4.83	4.49	4.58	7.65	7.02	5.67	8.26	9.99	6.69	4.77	4.96	3.23	4.67	5.66
Industrial Supplies (Non-Food)	33.47	30.77	32.10	40.92	32.03	31.69	31.24	28.17	31.84	27.84	38.40	27.79	27.63	30.03
Fuel and Lubricants	17.96	28.42	27.21	10.35	20.97	30.47	23.22	24.69	28.67	31.72	23.48	37.11	32.34	32.73
Machinery and other Capital Equipment ..	16.92	15.13	16.20	16.65	16.09	14.98	16.87	19.29	13.97	15.53	15.05	14.17	12.99	18.72
Transport Equipment	18.21	12.63	11.58	15.76	16.10	9.73	13.21	10.17	12.00	12.70	10.08	11.45	16.47	6.15
Consumer Goods not elsewhere specified	7.68	8.30	8.32	8.67	7.42	7.45	7.19	7.65	6.82	7.13	8.02	6.25	5.61	6.43
Goods not elsewhere specified	0.93	0.26	0.02	0.01	0.37	0.01	0.00	0.03	0.01	0.30	0.02	0.00	0.29	0.28
TOTAL	100.00	100.00	100.00	100.00	100.00	100.00	100.00	100.00	100.00	100.00	100.00	100.00	100.00	100.00

Table 14(a): Local Electricity Generation by Source

Million KWh				
MONTH	HYDRO	GEO - THERMAL	THERMAL	TOTAL
2007				
July	297.8	88.8	152.7	539.30
August	300.8	88.2	151.8	540.82
September	297.2	79.1	150.6	526.93
October	305.2	82.3	154.3	541.80
November	307.4	85.8	147.5	540.70
December	299.6	82.2	128.7	510.50
2008				
January	287.8	88.9	93.5	470.23
February	276.9	78.1	100.2	455.13
March	290.2	84.6	115.1	489.96
April	280.6	87.6	122.6	490.76
May	291.9	87.2	118.4	497.49
June	252.63	87.74	122.54	462.91
July	250.97	88.33	140.72	480.02
August	269.21	80.39	132.15	481.75

* Provisional

Source: KPL&C

Fig 9: Electricity Generation by Source

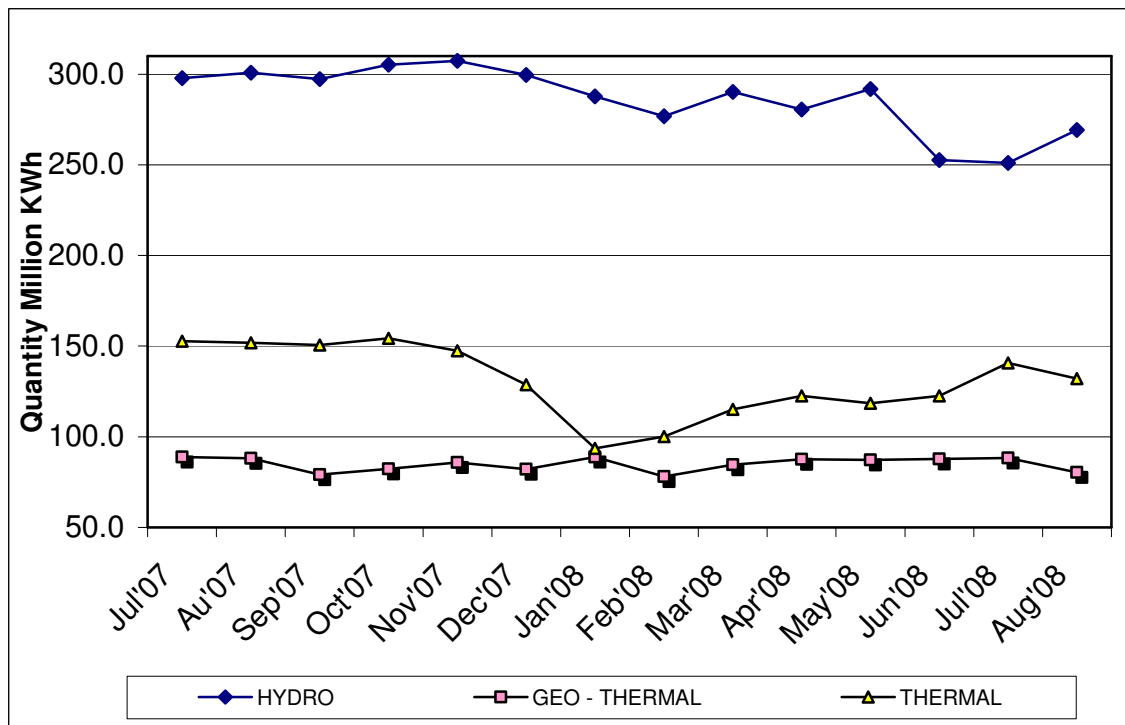


Table 14(b): Generation and Consumption of Electricity

Month	GENERATION						CONSUMPTION				
	LOCAL GENERATION	IMPORTS			EPPS (Aggreko)	TOTAL GENERATION	TOTAL KPLC SALES	RURAL ELECTRIFICATION	EXPORTS TO UGANDA	TOTAL DOMESTIC CONSUMPTION*	POWER LOSSES
		UGANDA	TANZANIA	Total Imports							
2007*											
July	539.3	2.24	0.05	2.3	48.1	541.6	398.0	18.21	6.71	416.2	-118.7
August	540.8	1.7	0.05	1.7	45.2	542.6	420.6	19.08	3.25	439.7	-99.6
September	526.9	2.1	0.05	2.2	45.4	529.1	432.5	18.95	4.11	451.4	-73.5
October	541.8	2.3	0.05	2.4	48.0	544.2	411.8	18.89	3.33	430.7	-110.2
November	540.7	3.0	0.09	3.1	42.6	543.8	436.5	20.26	2.97	456.7	-84.1
December	510.5	2.6	0.11	2.7	34.8	513.2	398.2	17.55	3.01	415.7	-94.5
2008*											
January	470.2	2.6	0.11	2.7	32.5	505.4	401.3	20.60	4.39	421.9	-79.2
February	455.1	1.7	0.10	1.8	40.9	497.8	422.1	19.82	3.35	441.9	-52.6
March	490.0	1.9	0.10	2.0	40.9	532.9	397.2	19.38	3.88	416.6	-112.4
April	490.8	1.1	0.10	1.2	46.9	538.8	415.1	19.78	10.41	434.9	-93.5
May	497.5	1.6	0.11	1.7	57.7	556.6	426.5	20.48	7.95	447.0	-101.6
June	462.9	1.7	0.11	1.8	73.6	538.3	444.1	21.17	3.64	465.3	-69.4
July	480.0	1.6	0.12	1.7	82.4	564.2	402.5	20.73	3.59	423.3	-137.3
August	481.8	2.1	0.11	2.2	77.6	561.5	448.1	21.90	2.14	470.0	-89.4

NB: Difference between amount purchased from KENGEN and imported from Uganda and consumption reflect transmission, distribution and commercial losses

Fig 10: Electricity Generation Consumption and Power Losses

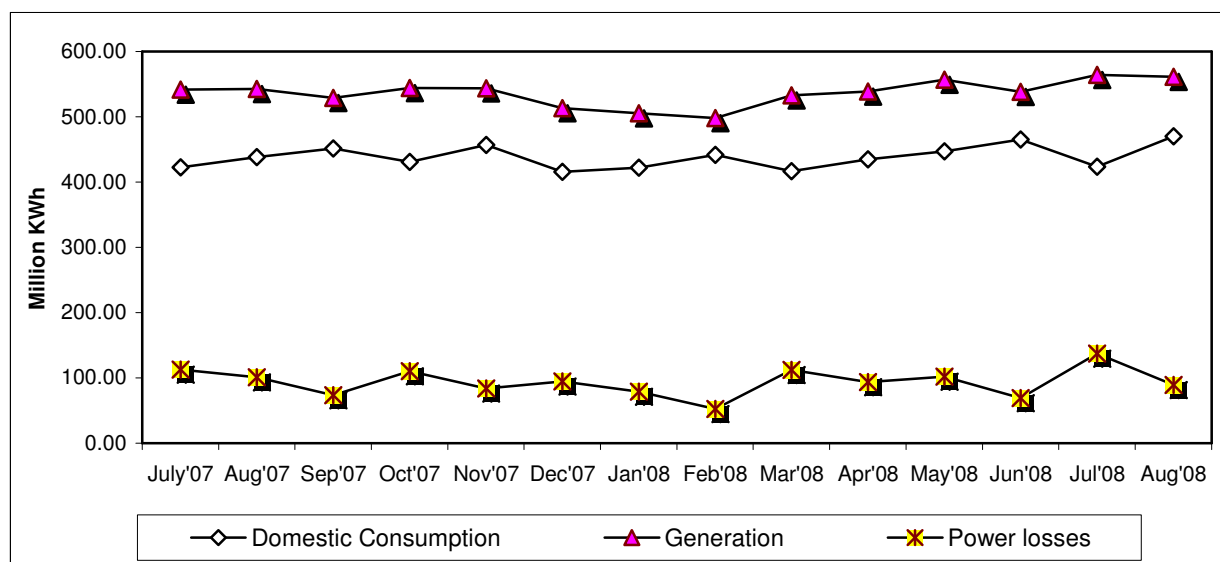


Table 14 (c): Consumption of Petroleum Fuels

PERIOD									'000 MT
	LIGHT DIESEL OIL	JET FUEL	FUEL OILS	MOTOR SPIRIT	ILLUMINATING KEROSENE	HEAVY DIESEL OIL	L.P.G.	AVIATION GASLENE	TOTAL FUELS
2007*									
July	102.7	56.2	42.4	28.2	21.2	2.4	4.6	0.18	257.7
August	94.8	54.8	57.3	31.6	20.6	2.8	9.5	0.17	271.5
September	102.4	53.0	44.5	37.5	19.0	3.8	8.5	0.16	268.8
October	87.0	55.3	57.1	31.1	21.6	2.2	5.4	0.17	259.8
November	73.0	53.7	39.3	27.5	15.0	2.0	4.1	0.15	214.8
December	96.9	56.2	55.3	33.7	24.8	3.2	6.2	0.39	276.8
2008*									
January	76.4	47.8	37.0	27.9	17.6	2.0	6.5	0.19	215.3
February	82.4	45.1	39.4	27.0	17.8	2.2	5.1	0.11	219.1
March	87.4	46.6	44.3	28.7	16.6	2.2	4.5	0.14	230.4
April	88.3	43.6	47.9	28.6	21.8	2.3	5.3	0.09	237.9
May	96.2	44.8	66.7	28.7	21.0	2.1	5.2	0.13	264.8
June	85.5	40.2	42.8	26.1	19.8	1.9	5.1	0.11	221.6
July	95.6	46.9	38.4	30.5	22.0	2.1	21.7	0.46	257.6
August	104.0	49.5	57.1	27.5	20.7	2.3	5.1	0.17	266.5
September	79.4	48.2	42.4	29.4	15.2	2.1	5.3	0.17	222.1

Source : Ministry of Energy

* Sales from major oil marketing firms only
- data not available

Table 14 (d): Weighted Average Retail Prices for Selected Fuel Products within Nairobi
KSh per litre

PERIOD	MOTOR GASOLINE PREMIUM	MOTOR GASOLINE REGULAR	LIGHT DIESEL OIL (GASOIL)	ILLUMINATING KEROSENE
Oct-07	83.65	82.14	73.18	60.58
Nov-07	84.82	82.63	75.07	61.73
Dec-07	85.18	82.77	75.36	62.79
Jan-08	88.57	86.57	78.40	66.77
Feb-08	90.49	88.23	80.31	68.90
Mar-08	93.40	90.52	82.79	68.77
Apr-08	95.96	92.63	85.62	71.27
May-08	96.87	95.15	87.91	71.74
Jun-08	102.34	98.74	95.70	78.87
Jul-08	106.10	101.52	100.21	85.43
Aug-08	108.20	103.32	103.10	88.49
Sep-08	104.56	101.02	101.48	88.07
Oct-08	100.36	98.16	97.73	88.07

Source : Kenya National Bureau of Statistics

Fig 11(a): Average Retail Prices of selected Petroleum Products

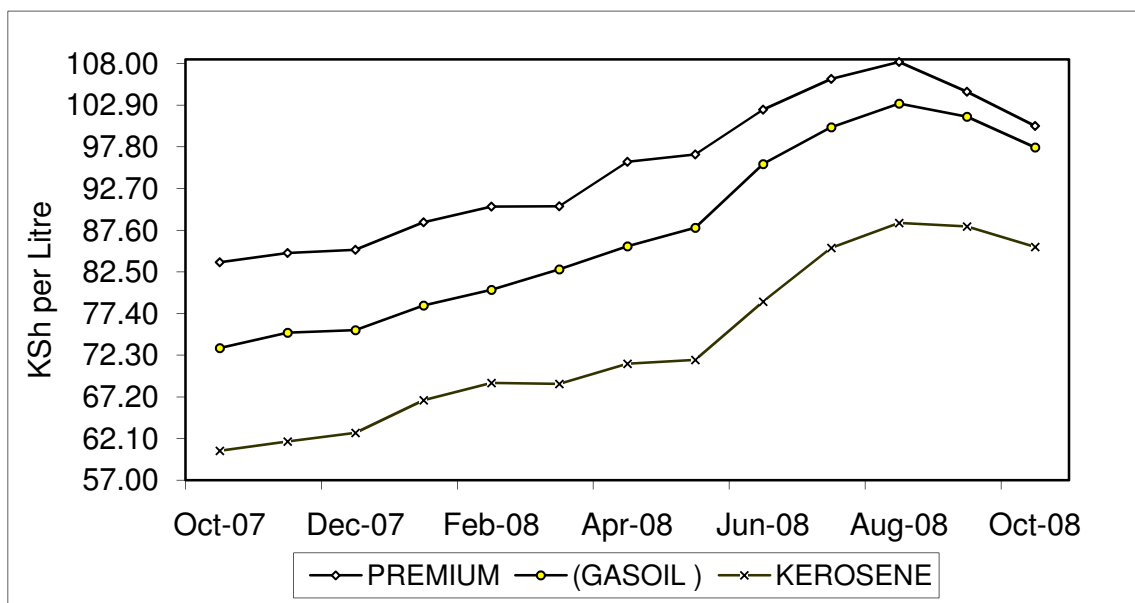


Table 14 (e): Weighted Average Retail Prices for Selected Fuels in Kenya

PERIOD	MOTOR GASOLINE PREMIUM (KSh Per Litre)	MOTOR GASOLINE REGULAR (KSh per Litre)	LIGHT DIESEL OIL, GASOIL (KSh per Litre)	ILLUMINATING KEROSENE (KSh per Litre)	L.P.G (KSh per 13Kg)	Charcoal (KSh per 4 Kg Tin)
Sep-07	80.10	79.02	68.43	57.58	1,671.63	34.08
Oct-07	82.11	80.75	71.14	58.60	1,633.21	32.85
Nov-07	83.43	82.05	72.74	59.66	1,671.54	32.72
Dec-07	84.50	82.75	73.95	60.82	1,705.76	32.61
Jan-08	88.04	86.10	77.69	64.37	1,735.70	34.79
Feb-08	89.99	88.18	80.17	66.66	1,769.35	35.08
Mar-08	91.63	89.99	81.63	66.94	1,783.63	34.99
Apr-08	94.32	92.71	84.49	68.81	1,785.46	34.91
May-08	98.60	94.96	88.51	74.30	1,797.90	35.50
Jun-08	100.43	98.73	93.18	75.45	1,810.07	35.84
Jul-08	103.30	102.45	97.68	80.95	1,802.58	35.73
Aug-08	105.90	104.18	100.90	84.95	1,807.43	35.95
Sep-08	106.85	103.89	100.77	84.52	1,816.06	36.59
Oct-08	102.12	101.09	98.09	82.61	1,827.09	36.95

Source : Kenya National Bureau of Statistics

- data not available

Fig 11(b): Weighted Average Prices for LPG in Kenya

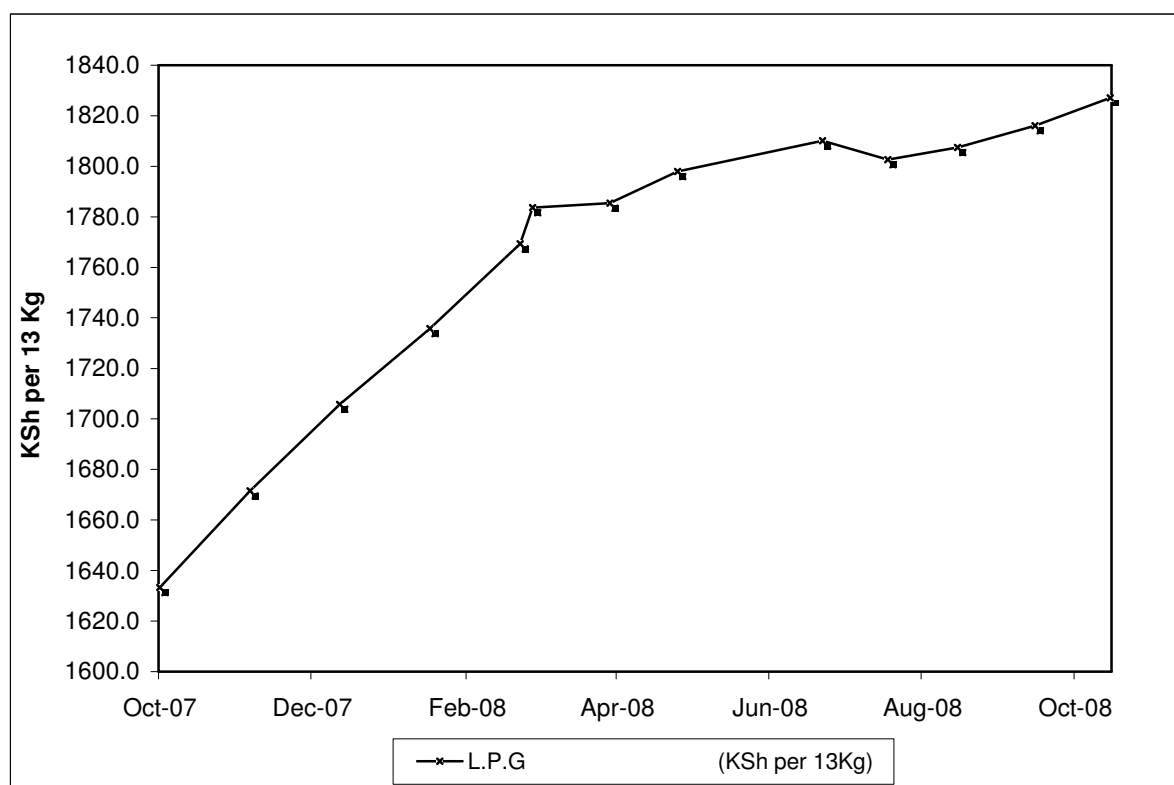


Table 14(f): Murban ADNOC Prices 2003-2008

Month/Year	US\$BBL					
	2003	2004	2005	2006	2007	2008*
January	29.60	31.05	42.10	62.15	54.85	92.25
February	31.70	30.90	44.00	60.95	58.75	95.10
March	29.10	33.15	50.95	60.85	62.10	102.20
April	25.00	33.80	52.55	67.50	67.60	109.35
May	25.85	37.05	49.80	68.50	68.40	125.75
June	26.80	35.95	55.45	68.85	69.70	134.00
July	27.75	37.35	57.10	73.00	73.70	137.35
August	28.85	41.55	60.95	72.70	71.75	117.50
September	26.95	41.39	61.05	63.25	78.55	98.05
October	29.10	42.80	58.00	59.35	81.80	69.25
November	29.60	39.65	54.95	59.70	91.75	
December	30.05	38.50	56.90	62.05	90.60	

Source : Ministry of Energy

* Provisional

ADNOC : Abu Dhabi National Oil Corporation

PRICE : Abu Dhabi Free On Board (FOB)

US\$/ BBL: US Dollar per Barrel

Fig 12: Trend for Murban ADNOC Crude Oil Prices

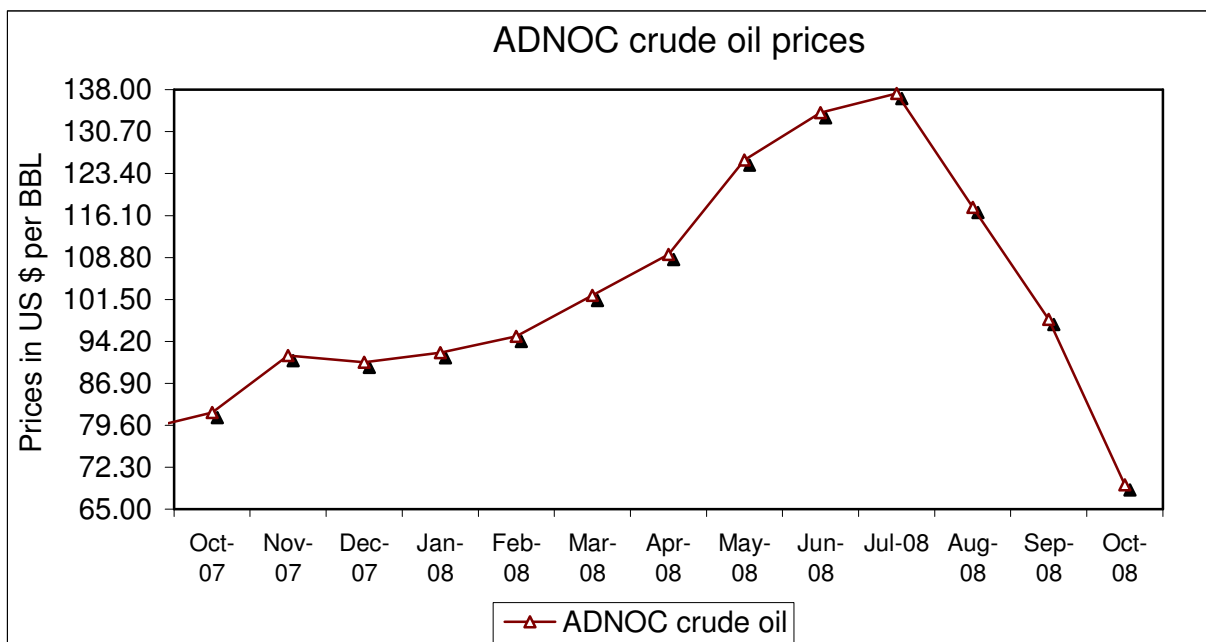


Table 15: Value of Building Plans Approved by Nairobi City Council (NCC)

KSh.'Million

MONTHS	ACTUAL			REAL **		
	RESIDENTIAL	NON RESIDENTIAL	AGGREGATE ACTUAL	RESIDENTIAL	NON RESIDENTIAL	REAL AGGREGATE
2007						
July	2,181.9	2,270.1	4,452.0	46.4	46.0	92.4
Aug	1,660.9	1,459.9	3,120.8	35.3	29.6	64.9
Sep	2,556.2	1,514.4	4,070.6	52.1	29.4	81.5
Oct	6,214.1	2,764.2	8,978.2	126.7	53.7	180.4
November	2,959.5	3,125.3	6,084.8	60.4	60.7	121.3
December	2,721.4	963.3	3,684.8	55.5	18.7	73.4
2008						
January	2,355.3	1,968.5	4,323.8	43.8	34.9	78.7
February	2,496.4	1,525.4	4,021.8	46.4	27.1	73.5
March	1,496.1	2,916.8	4,412.9	27.8	51.7	79.5
April	3,249.1	2,962.9	6,212.0	60.4	52.6	112.9
May	1,683.6	2,810.7	4,494.3	31.3	49.9	81.1
June	2,008.8	1,874.8	3,883.6	38.0	33.9	71.9
July	2,417.1	1,368.1	3,785.2	45.3	24.6	69.9
August	1,961.3	1,621.5	3,582.8	36.5	29.1	65.5
September	2,144.5	1,589.7	3,734.2	39.9	28.5	68.4

Source: Nairobi City Council

* Provisional

Table 16(a): Domestic Production of Sugar

Month	Metric Tonnes							
	2001	2002	2003	2004	2005	2006	2007	2008*
January	28,291	48,300	37,923	49,186	48,993	47,596	42,188	38,986
February	30,308	39,479	39,709	48,708	41,929	44,823	41,246	49,772
March	36,110	39,479	22,881	46,827	40,192	51,327	45,933	40,753
April	33,148	41,105	17,879	43,123	42,988	41,055	47,255	38,968
May	24,731	18,744	34,954	37,583	40,869	39,849	45,427	50,865
June	35,683	44,581	39,144	28,069	29,076	34,985	36,870	49,300
July	25,695	50,184	31,878	36,824	27,995	30,985	37,496	40,805
August	19,015	45,895	40,106	41,622	41,585	47,002	44,898	21,130
September	37,058	48,752	48,302	45,438	39,003	35,173	44,396	40,567
October	37,355	44,573	48,939	45,530	45,810	35,102	48,849	
November	29,311	35,609	43,037	45,107	42,493	34,265	44,155	
December	40,733	37,923	43,768	48,738	48,069	33,509	41,691	
Total	377,438	494,624	448,520	516,755	489,002	475,671	520,404	

*Provisional

** Revised based on Kenya Sugar Board figures.

Source: Kenya Sugar Authority

TABLE 16(b): PRODUCTION OF SOFT DRINKS

Month	Metric Tonnes							
	2001	2002	2003	2004	2005	2006*	2007*	2008*
January	28,889	38,553	51,676	17,162	22,025	32,548	28,835	24,449
February	17,270	18,547	19,540	12,692	22,895	26,470	27,484	22,435
March	17,721	17,558	17,353	17,650	27,395	27,538	31,120	29,411
April	13,798	14,096	15,970	10,596	18,196	19,542	26,411	21,622
May	11,288	11,698	13,514	12,509	17,308	20,406	26,148	23,842
June	11,840	13,917	15,109	19,776	18,513	22,682	22,852	23,952
July	7,981	6,947	6,266	13,828	19,044	17,568	20,508	20,659
August	10,136	10,486	10,784	12,722	15,367	20,095	21,402	22,545
September	8,180	7,842	6,709	18,768	19,950	20,127	25,899	
October	11,042	9,980	9,102	13,863	21,965	23,774	40,067	
November	12,781	12,354	11,977	11,813	26,881	20,689	27,177	
December	19,612	20,521	22,989	14,542	27,485	27,968	30,329	
Total	170,538	182,499	200,989	175,921	257,024	279,407	328,231	

Source : Kenya National Bureau of Statistics

Table 16(c): Production of Assembled Vehicles

Month	Numbers			
	2005	2006*	2007*	2008*
January	322	360	450	468
February	641	411	516	592
March	579	461	565	388
April	553	436	532	601
May	489	486	574	575
June	448	399	481	487
July	507	439	456	468
August	439	480	589	454
September	423	477	566	
October	341	447	718	
November	322	592	658	
December	335	392	437	
Total	5,399	5,380	6,542	

*Provisional

TABLE 16(d): PRODUCTION OF GALVANISED SHEETS

Month	Metric Tonnes			
	2005	2006	2007	2008
January	12,203	13,520	13,515	16,240
February	11,491	12,765	15,365	16,912
March	10,679	12,736	16,920	15,498
April	10,439	13,138	15,855	15,396
May	15,952	13,754	14,816	15,240
June	15,085	13,946	16,404	15,050
July	13,596	15,695	15,674	15,247
August	14,806	15,180	15,921	15,295
September	17,536	13,927	15,877	
October	15,837	13,619	16,611	
November	15,544	15,552	15,372	
December	15,950	14,914	15,930	
Total	169,118	168,746	188,260	

Source : Kenya National Bureau of Statistics

- data not available

*Provisional

Table 16(e): Cement production and Consumption

MONTHS	Metric Tonnes					
	2006		2007*		2008*	
	PRODUCTION	CONSUMPTION	PRODUCTION	CONSUMPTION	PRODUCTION	CONSUMPTION
January	161,701	136,601	196,464	135,327	178,661	155,664
February	158,364	129,892	178,706	130,918	186,508	176,538
March	164,533	145,723	215,477	164,619	214,565	224,089
April	167,015	130,696	198,779	162,976	212,410	206,255
May	173,367	137,022	214,333	178,679	255,825	250,675
June	179,889	148,516	198,002	163,622	245,056	243,965
July	191,968	148,648	236,597	190,706	268,602	262,901
August	186,962	160,361	235,786	191,609	267,742	249,121
September	180,924	151,012	235,088	191,373		267,307
October	212,101	172,258	206,289	191,244		
November	202,101	163,825	221,484	199,745		
December	195,165	141,260	208,656	160,582		
TOTAL	2,174,090	1,765,814	2,545,660	2,061,400		

- data not available

Source: Kenya National Bureau of Statistics

*Provisional

-: data not available

Table 16F: Milk Intakes in the Formal Milk Sector.

	litres			
Month	2005	2006	2007	2008
Jan	25,843,184	28,993,210	35,997,997	28,596,999
Feb	25,233,962	25,445,275	37,508,095	26,527,462
Mar	24,245,260	21,142,657	34,608,329	26,885,445
Apr	22,271,673	23,285,252	33,286,207	28,616,588
May	25,260,095	29,773,451	30,038,560	33,280,195
Jun	27,742,995	34,032,057	33,092,547	34,723,010
Jul	32,972,254	33,304,057	33,147,783	32,838,240
Aug	31,841,004	32,658,519	36,022,269	33,643,230
Sept	30,935,673	32,159,974	35,186,438	31,812,702
Oct	30,945,573	32,236,110	37,988,733	
Nov	32,229,310	33,925,921	39,840,842	
Dec	30,013,714	33,192,254	36,393,069	
Total	339,534,696	360,148,736	423,110,869	

Source: Kenya Dairy Board

FIG 13: Milk Intake in the Formal Sector

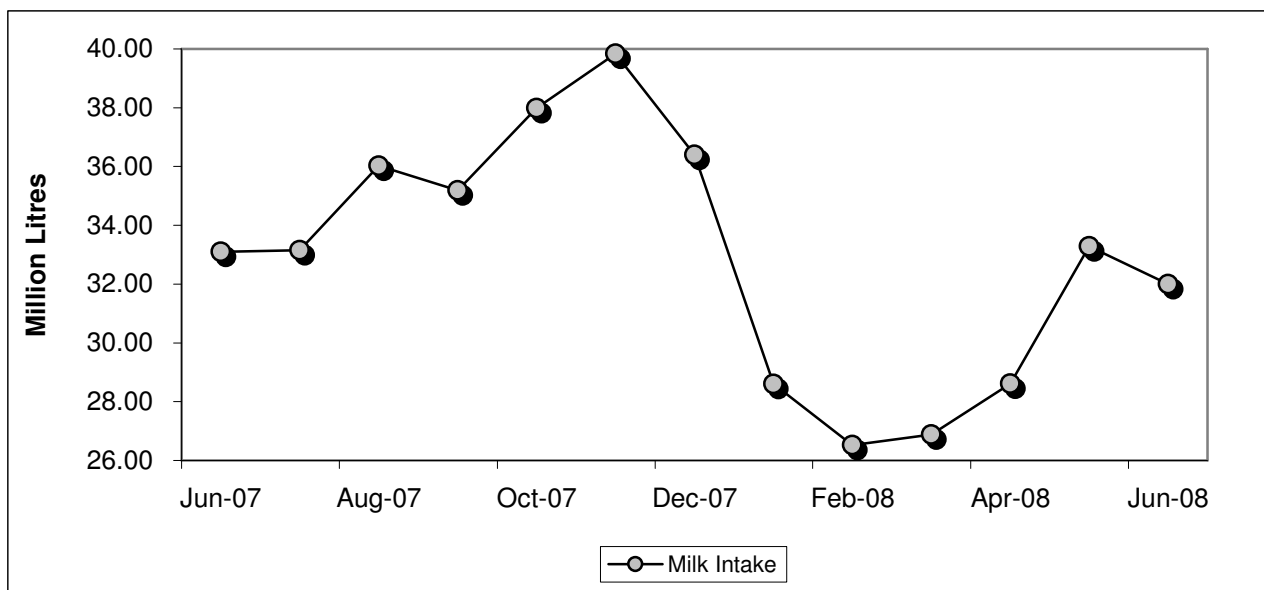


Table 17: Visitor Arrivals* through Jomo Kenyatta International Airport (J.K.I.A) and Moi International Airport (M.I.A)

MONTH	AIRPORT		Numbers
	JKIA	MIA	Visitors to Kenya
Total 2006	684,475	261,773	946,248
2007			
July	80,025	21,963	101,988
August	82,487	26,916	109,403
September	70,160	22,810	92,970
October	66,954	24,127	91,081
November	55,701	23,210	78,911
December	67,126	29,210	96,336
Total 2007	769,597	276,298	1,045,895
2008			
January	46,464	8,906	55,370
February	30,231	6,739	36,970
March	40,770	5,106	45,876
April	40,686	2,063	42,749
May	39,812	2,760	42,572
June	47,224	3,059	50,283
July	64,208	9,311	73,519
August	62,890	13,081	75,971
September	56,026	11,136	67,162

* Visitors arrivals exclude Kenyans

**Provisional

FIG 14: VISITORS ARRIVING IN KENYA THROUGH THE MAIN AIRPORTS

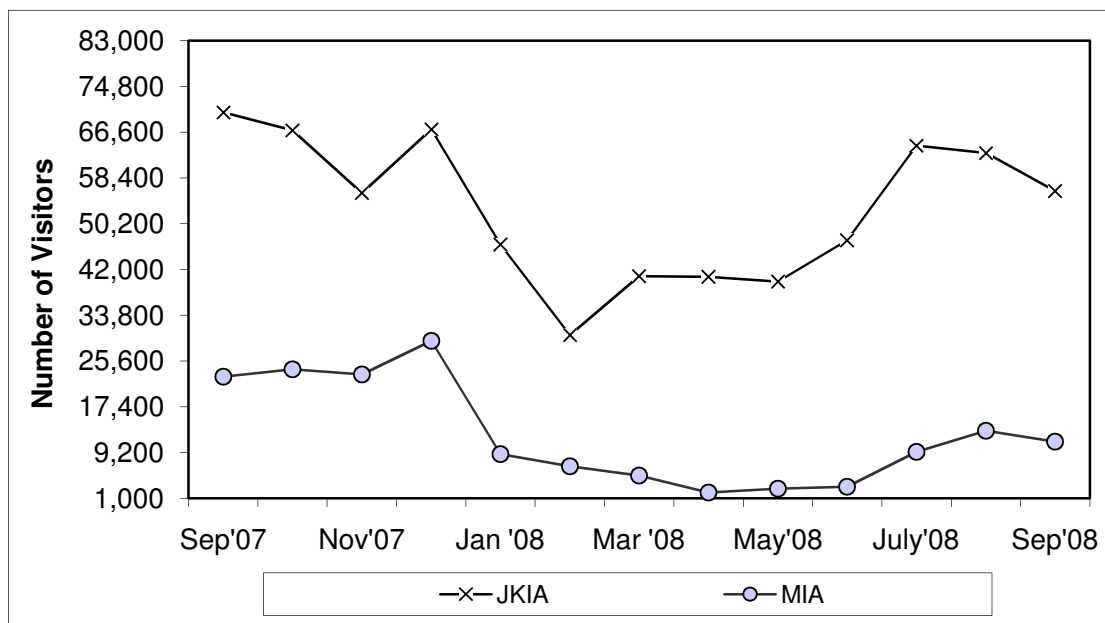


TABLE (18A): JOMO KENYATTA INT. AIRPORT INTERNATIONAL FLIGHTS ONLY- EMBARKED PASSENGERS BY PORT OF DESTINATION.

PORTS.	2007						2008							
	Aug	Sep	Oct	Nov	Dec	TOTAL	Jan	Feb	Mar	Apr	May	June	July	Aug
ADDIS ABABA (ADD)	3,888	782	5,354	3,959	6,190	45,260	719	3,975	635	740	620	4,320	1,081	3,929
CAIRO (CAI)	3,088	2,904	3,530	2,529	1,201	26,195	902	1,367	1,860	2045	1,903	2,505	3,719	2,941
DAR ES SALAAM (DAR)	9,868	8,294	7,347	6,378	6,373	82,939	5,278	5,667	6,300	7018	6,709	2,684	7,073	7,353
ENTEBBE (EBB)	11,824	10,989	9,816	10,297	9,375	119,541	9,143	8,767	10,505	9631	9,647	11,051	10,839	11,005
HARARE (HRE)	1,371	1,324	1,140	2,024	1,635	16,880	1,223	1,148	1,556	1357	1,334	1,186	918	1,352
JOHANNESBURG (JNB)	10,291	6,889	9,868	12,982	9,998	116,178	8,672	6,645	6,168	5860	8,118	8,741	6,237	10,646
TOTAL AFRICA	40,330	31,182	37,055	38,169	34,772	406,993	25,937	27,569	27,024	26,651	28,331	30,487	29,867	37,226
BOMBAY (BOM)	5,878	6,084	6,827	8,371	6,732	73,691	1,019	4,821	662	5271	4,282	6,253	6,442	6,161
DUBAI (DXB)	9,028	6,465	6,301	17,235	17,780	122,115	13,866	5,729	15,580	15383	15,540	14,870	21,141	23,848
JEDAH (JED)	2,432	1,429	0	472	0	8,130	0	256	264	492	507	463	0	2,432
KARACHI (KHI)	0	0	0	0	0	0	0	0	0	0	0	0	0	0
MUSCAT (MCT)	-	0	-	0	0	0	0	0	0	0	0	0	0	0
OTHERS														
TOTAL ASIA	17,338	13,978	13,128	26,078	24,512	203,936	14,885	10,806	16,506	21,146	20,329	21,586	27,583	32,441
AMSTERDAM (AMS)	22,088	18,590	16,183	15,311	2,632	176,803	3,950	2,357	2,703	3433	7,771	13,085	6,414	19,163
BRUSSELS (BRU)	3,831	2,537	1,825	2,092	2,069	29,563	1,345	1,003	0	0	3,353	3,282	2,403	3,831
LONDON (LON)	23,395	20,119	16,896	14,155	11,862	195,780	14,002	7,252	10,247	6786	11,093	17,709	12,957	23,915
PARIS-(CDG) & (PAR)	3,005	2,718	1,368	1,721	1,718	19,034	1,248	565	-	0	0	0	3,885	4,047
ROME (ROM) ^z	-	-	-	-	-	-	-	-	-	0	0	0	0	0
ZURICH (ZRH)	2,152	2,482	2,408	2,054	2,137	27,288	3,695	3,558	0	0	3,669	4,064	2,552	2,152
TOTAL EUROPE	54,471	46,446	38,680	35,333	20,418	448,468	24,240	14,735	12,950	10,219	25,886	38,140	28,211	53,108
TOTAL OTHERS**	41,690	42,147	37,619	38,429	34,060	428,639	28,017	35,556	69,894	33061	37,644	37,102	45,355	52,666
GRAND TOTAL	153,829	133,753	126,482	138,009	113,762	1,488,177	93,079	88,666	126,374	91,077	112,190	127,315	131,016	175,441

Source : Kenya National Bureau of Statistics

- no passengers embarked

* Provisional

** Ports not listed

z All planes flying to Italy

FIG 15: J.K.I.A. PASSENGERS BY REGION OF DESTINATION

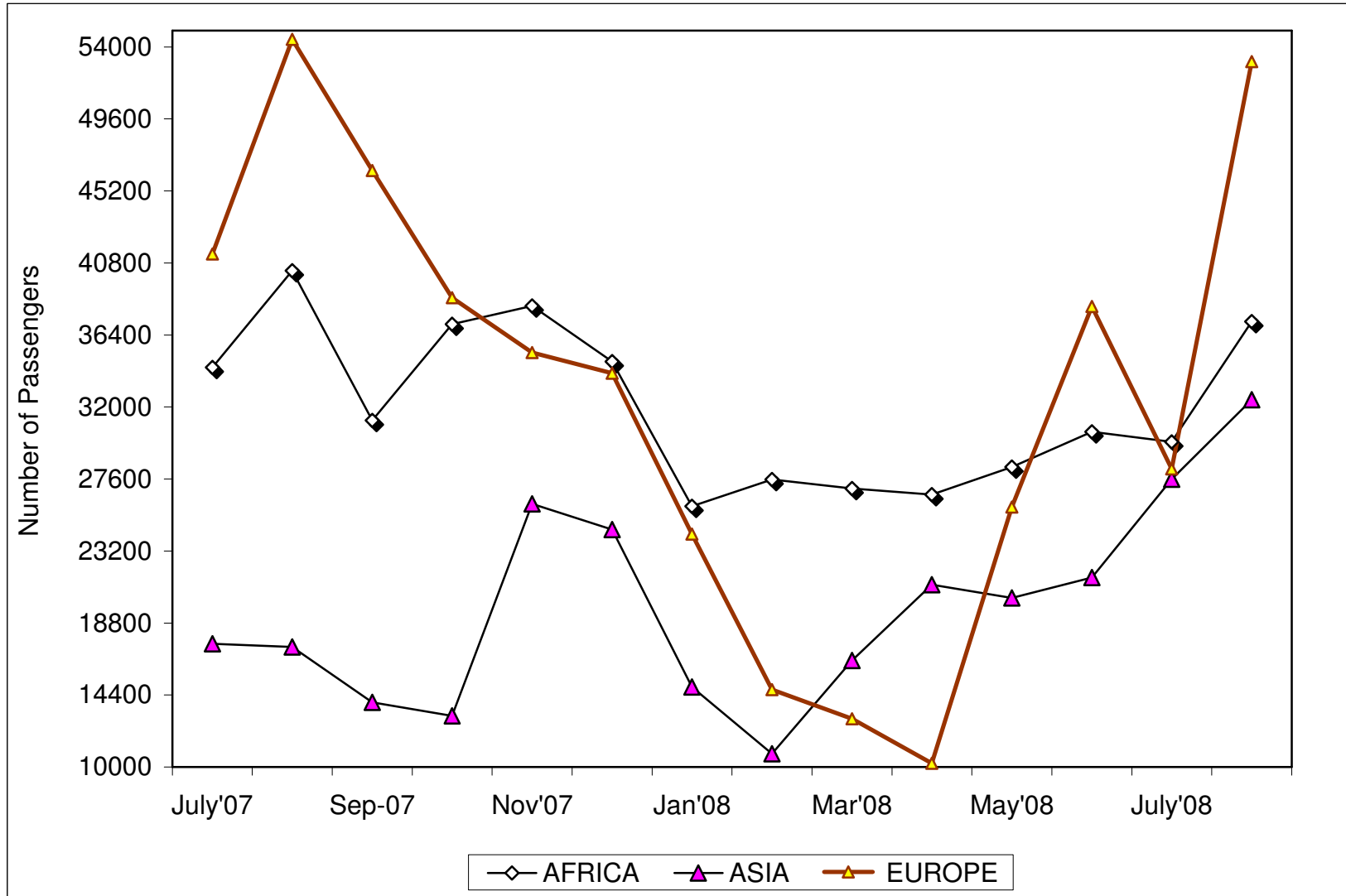


TABLE (18B): JOMO KENYATTA INT. AIRPORT INTERNATIONAL FLIGHTS ONLY- LANDED PASSENGERS BY PORT OF DESTINATION.

PORTS	2007						2008							
	Aug	Sep	Oct	Nov	Dec	TOTAL	Jan	Feb	Mar	Apr	May	June	July	Aug
ADDIS ABABA (ADD)	3,912	796	4,493	4,428	2,812	42,261	858	3,232	891	950	1,114	3,041	649	3,761
CAIRO (CAI)	2,884	1,122	2,360	2,190	1,451	23,824	1,184	1,202	1,592	1,874	1,840	2,369	3,888	6,478
DAR ES SALAAM (DAR)	10,859	8,328	9,242	6,664	5,816	85,689	5,553	6,770	6,334	6,547	6,277	4,881	7,963	7,909
ENTEBBE (EBB)	12,104	10,285	9,677	10,288	9,177	118,612	8,756	8,591	10,461	9,304	9,430	10,774	11,035	10,881
HARARE (HRE)	1,242	1,520	1,043	1,308	1,303	15,555	1,155	1,016	1,052	1,043	893	1,060	1,172	1,195
JOHANNESBURG (JNB)	10,088	6,740	8,973	10,120	10,733	107,676	7,148	5,527	5,729	6,306	8,002	9,171	7,154	10,042
TOTAL AFRICA	41,089	28,791	35,788	34,998	31,292	393,617	24,654	26,338	26,059	26,024	27,556	31,296	31,861	40,266
BOMBAY (BOM)	7,098	6,391	3,983	5,964	0	70,627	1,616	1,121	1,097	6,113	7,162	6,700	6,453	6,150
DUBAI (DXB)	8,026	5,845	6,199	15,600	17,210	118,377	14,215	5,395	14,699	14,226	15,024	15,587	19,616	20,475
JEDAH (JED)	1,546	250	0	195	0	6,906	0	165	262	323	452	706	0	1,546
KARACHI (KHI)	0	0	0	0	0	0	0	0	0	0	0	0	0	0
MUSCAT (MCT)	0	0	0	0	0	-	0	0	0	0	0	0	0	0
TOTAL ASIA	16,670	12,486	10,182	21,759	17,210	195,910	15,831	6,681	16,058	20,662	22,638	22,993	26,069	28,171
AMSTERDAM (AMS)	19,663	19,273	18,230	14,537	7,605	183,515	5,355	5,294	5,994	4,337	7,929	7,297	5,595	16,997
BRUSSELS (BRU)	1,412	1,674	1,985	1,158	1,926	19,720	767	600	0	0	2,350	5,751	1,828	1,412
LONDON (LON)	20,698	18,885	20,208	12,384	15,233	189,493	8,948	6,201	9,284	5,787	11,985	20,902	10,953	13,890
PARIS-(CDG)&(PAR)	2,430	1,511	2,003	1,544	2,096	17,293	639	584	0	0	0	0	2,892	2,789
ROME (ROM) Z	0	0	0	0	0	-	0	0	0	0	0	0	0	0
ZURICH (ZRH)	2,246	2,528	0	1,996	2,307	25,579	1,521	1,099	0	0	1,679	2,097	5,104	2,246
TOTAL(EUROPE)	46,449	43,871	42,426	31,619	29,167	435,600	17,230	13,778	15,278	10,124	23,943	36,047	26,372	37,334
OTHERS(TOTAL) **	44,688	44,322	41,291	40,036	38,133	445,935	25,996	30,007	72,017	54,919	56,779	42,088	48,881	50,659
GRAND TOTAL	148,896	129,470	129,687	128,412	115,802	1,471,062	83,711	76,804	129,412	111,729	130,916	132,424	133,183	156,430

Source : Kenya National Bureau of Statistics

- no passengers landed

* Provisional

** Ports not listed

z Includes all planes from Italy

FIG 16: J.K.I.A. PASSENGERS BY REGION OF ORIGIN

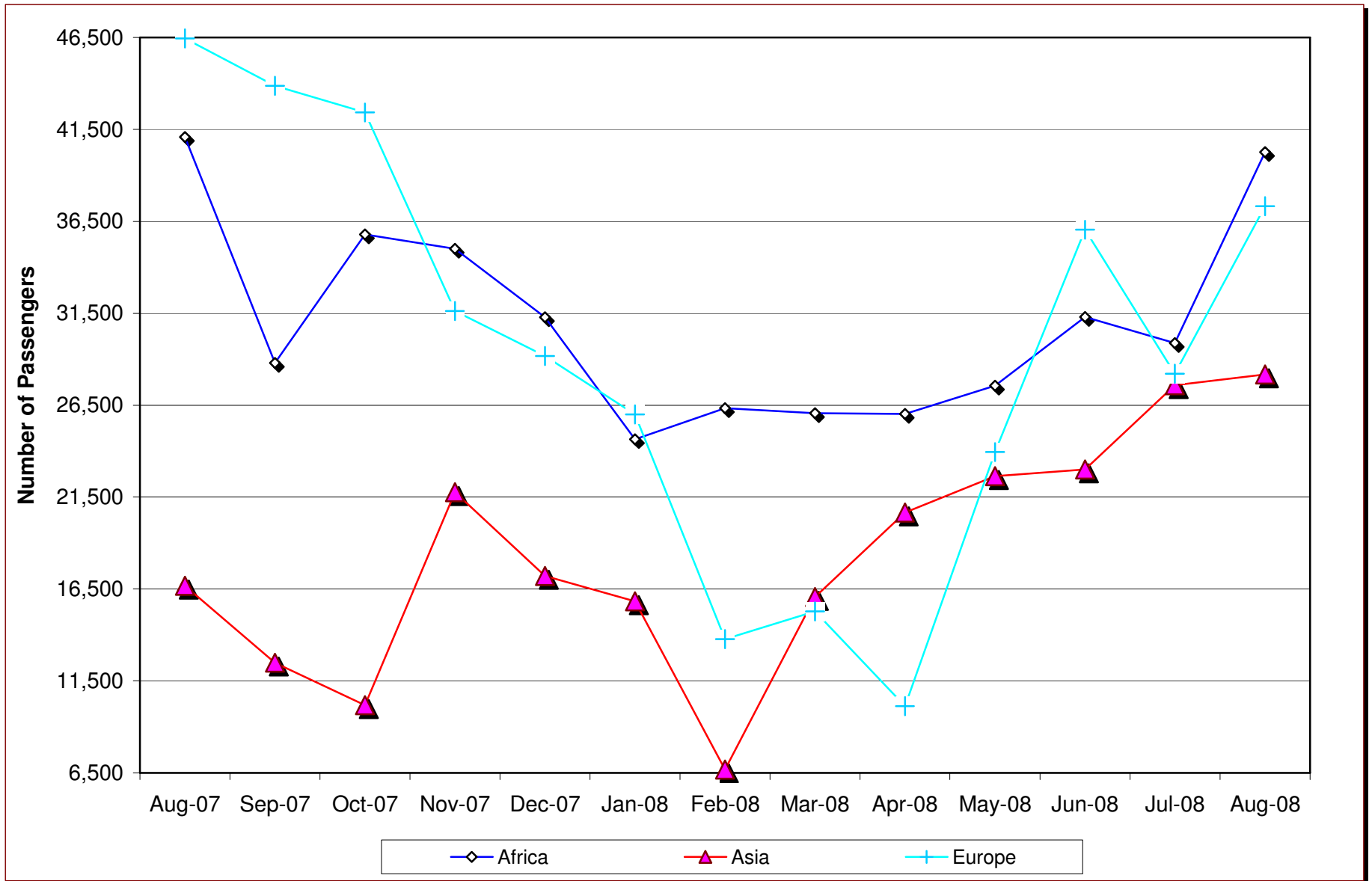


Table 18 C: New Vehicle Registration

<i>Body Type/Month</i>	2007				2008									
	<i>Oct</i>	<i>Nov</i>	<i>Dec</i>	<i>Cumulative 2007</i>	<i>Jan</i>	<i>Feb</i>	<i>Mar</i>	<i>Apr</i>	<i>May</i>	<i>June</i>	<i>July</i>	<i>Aug</i>	<i>Sep</i>	<i>Oct</i>
Saloons	2,057	1,721	1,096	17,893	1,876	1,065	830	1,272	1,311	1,230	1,823	2,686	1,630	1,603
St,Wagon	2,905	2,649	1,406	24,115	2,702	1,553	1,299	1,839	2,148	1,890	2,799	2,689	2,580	2,232
Vans,P/Ups,etc	883	877	696	9,470	601	706	566	877	413	405	555	408	479	680
M/Buses	598	84	503	4,252	427	452	435	559	390	314	509	564	426	573
Buses	132	714	170	2,006	83	61	82	97	128	73	126	129	104	108
Lorries	625	633	471	6,329	409	462	541	658	547	593	585	680	682	542
Trailers	236	178	144	2,193	177	134	184	182	168	170	193	170	88	166
Motors Cycles	1,353	2,165	826	16,293	1,740	1,982	1,904	3,840	4,390	3,859	4,530	4,605	5,964	6,650
3 Whellers	112	112	15	1,072	63	48	75	30	56	57	79	67	45	80
Wheeled tractors	102	154	55	1,213	87	121	85	133	101	88	90	67	143	13
Others	43	32	13	488	27	45	43	52	47	59	58	43	69	65
TOTAL	9,046	9,319	5,395	85,324	8,192	6,629	6,044	9,539	9,699	8,738	11,347	12,108	12,210	12,712

Source : Kenya National Bureau of Statistics

* Provisional

- Not specified