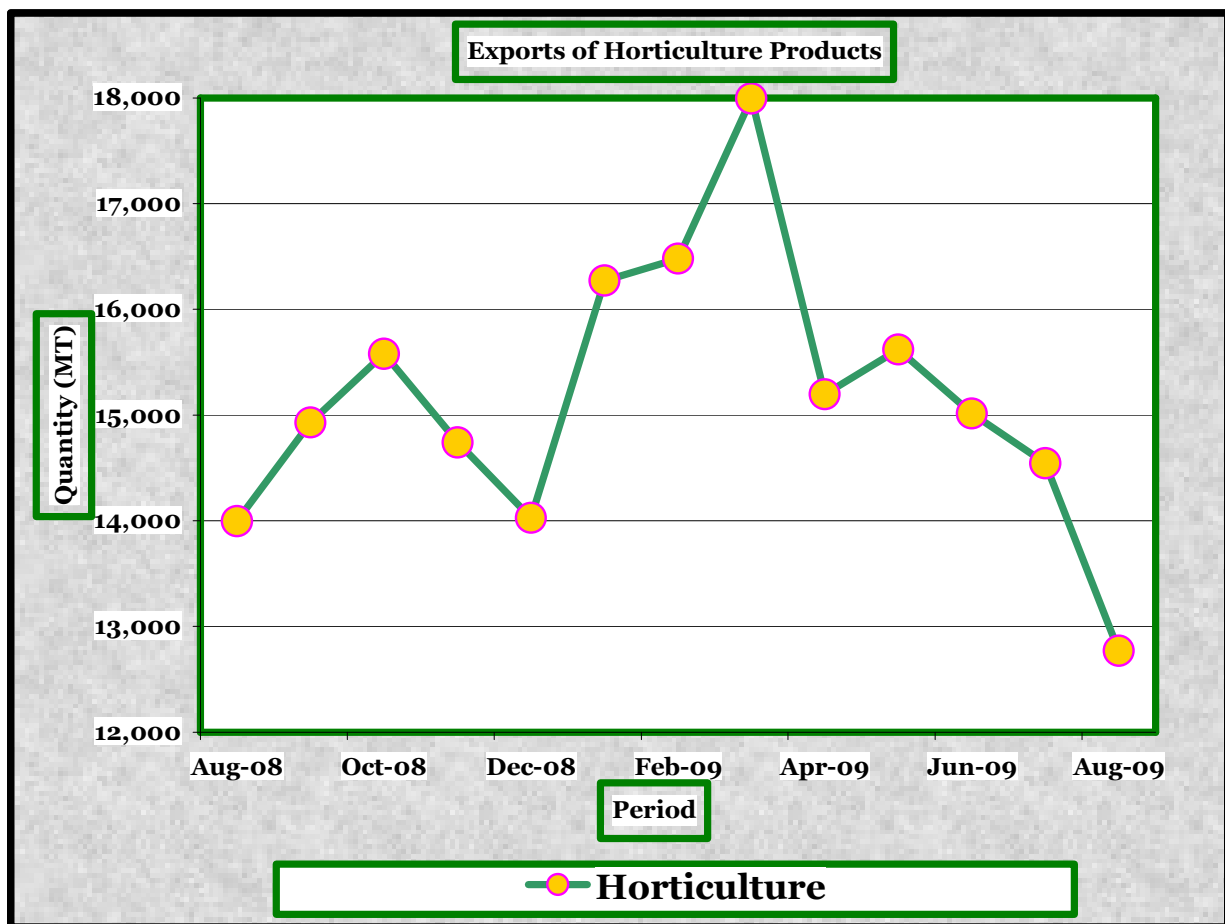


LEADING ECONOMIC INDICATORS



KENYA NATIONAL BUREAU OF STATISTICS

P.O. Box 30266- 00100 Nairobi

Tel: 317586/88, 317612/22 Fax: 315977

Website: www.knbs.go.ke

email: director@knbs.go.ke

SEPTEMBER 2009

TABLE OF CONTENTS

LIST OF TABLES	2
KEY HIGHLIGHTS ON LEADING ECONOMIC INDICATORS.....	4
OVERVIEW	4

LIST OF TABLES

TABLE 1:	KENYA CONSUMER PRICE INDICES AND INFLATION RATE	8
TABLE 2:	MEAN FOREIGN EXCHANGE RATES OF KENYA SHILLINGS AGAINST SELECTED MAJOR CURRENCIES AT THE END OF THE MONTH.....	10
Table 3:	Interest Rates (%).....	12
TABLE 4:	CAPITAL MARKETS – NAIROBI STOCK EXCHANGE	13
TABLE 6:	COFFEE SALES AND PRICES.....	17
TABLE 7:	TEA PRODUCTION AND PRICES*	18
Table 8(a):	Average Monthly Retail Prices for Dry Maize in the Year 2008.....	19
Table 8(b):	Average Monthly Retail Prices for Dry Maize in the Year 2009.....	20
Table 8(c):	Average Monthly Retail Prices for Dry Beans Prices (2008).....	21
Table 8(c):	Average Monthly Retail Prices for Dry Beans Prices (2009).....	22
Table 10:	Monthly Exports of Horticultural Products.....	24
Table 11:	Kenya’s External Trade, Aug 2008 – Aug 2009.....	25
Table 12:	Major Destinations of Domestic Exports, Aug 2008 – Aug 2009	26
Table 13:	Major Origins of Imports, July 2008 – July 2009	27
Table 12 (a):	Domestic Exports by Broad Economic Category.....	28
Table 13 (a):	Imports by Broad Economic Category.....	29
Table 14(a):	Local Electricity Generation by Source	30
Table 14(b):	Generation and Consumption of Electricity	31
Table 14 (c):	Consumption of Petroleum Fuels	32
Table 14 (d):	Weighted Average Retail Prices for Selected Fuel Products within Nairobi.....	33
Table 14 (e):	Weighted Average Retail Prices for Selected Fuels in Kenya	34
Table 14(f):	Murban ADNOC Prices 2003-2008	35
Table 15:	Value of Building Plans Approved by Nairobi City Council (NCC) ..	36
Table 16(a):	Domestic Production of Sugar.....	37
Table 16(c):	Production of Assembled Vehicles	38
Table 16(e):	Cement production and Consumption	39
Table 16(f):	Milk Intakes in the Formal Milk Sector.....	40
Table 17:	Visitor Arrivals* through Jomo Kenyatta International Airport (J.K.I.A) and Moi International Airport (M.I.A).....	41
TABLE (18A):	JOMO KENYATTA INT. AIRPORT INTERNATIONAL FLIGHTS ONLY- EMBARKED PASSENGERS BY PORT OF DESTINATION. ...	42
TABLE (18B):	JOMO KENYATTA INT. AIRPORT INTERNATIONAL FLIGHTS ONLY- LANDED PASSENGERS BY PORT OF DESTINATION.....	44
Table 18 C:	New Vehicle Registration.....	46

LIST OF FIGURES

FIG. 1:	OVERALL MONTH ON MONTH AND UNDERLYING INFLATION RATES.....	9
FIG 2:	END OF MONTH MEAN EXCHANGE RATE OF KENYA SHILLINGS AGAINST MAJOR SELECTED CURRENCIES	11
FIG 3:	INTEREST RATES	12
FIG 4:	NAIROBI STOCK EXCHANGE SHARES INDEX.....	13
FIG 5:	MONEY SUPPLY (M3)	15
FIG 6:	FOREIGN EXCHANGE RESERVES	16
FIG.7:	COFFEE SALES AT THE NAIROBI COFFEE EXCHANGE	17
FIG.8:	TEA PRODUCTION	18
Fig 9:	Electricity Generation by Source	30
Fig 10:	Electricity Generation Consumption and Power Losses	31
Fig 11(a):	Average Retail Prices of selected Petroleum Products	33
Fig 11(b):	Weighted Average Prices for LPG in Kenya	34
Fig 12:	Trend for Murban ADNOC Crude Oil Prices.....	35
FIG 13:	Milk Intake in the Formal Sector.....	40
FIG 14:	VISITORS ARRIVING IN KENYA THROUGH THE MAIN AIRPORTS.....	41
FIG 15:	J.K.I.A. PASSENGERS BY REGION OF DESTINATION	43
FIG 16:	J.K.I.A. PASSENGERS BY REGION OF ORIGIN.....	45

Key highlights on Leading Economic Indicators

Overview

Key highlights on Leading Economic Indicators

Overview

The monthly Leading Economic Indicators Publication for September 2009 highlight trends in Consumer Price Indices (CPI) and inflation, interest rates, exchange rates, international trade, agriculture, energy, manufacturing, building and construction, tourism and transport.

Macroeconomic Indicators and Financial Intermediation

The CPI increased by 1.1 per cent from 341.19 points in August 2009 to 345.03 points in September 2009 while month-on-month overall inflation rate fell from 18.4 per cent in August 2009 to 17.9 per cent in September 2009. The month on month underlying inflation rate which excludes food items from the CPI basket also dropped from 3.5 per cent in August to 3.2 per cent in September 2009.

The Kenya Shilling had a mixed performance in September 2009 as it appreciated against the US Dollar, the Sterling Pound and the South African Rand while weakening against the Euro and the Japanese Yen. The Shilling also depreciated against the Ugandan Shilling while weakening against the Tanzanian currency in the same month. The Shilling appreciated against the US Dollar, the Sterling Pound and the South African Rand in September 2009 to trade at KSh 74.999, KSh 120.292, KSh 19.999, respectively. However, the shilling depreciated against the Euro and the Japanese Yen in the same period to trade at KSh 109.692 and KSh 83.375. Regionally, the Kenyan shilling depreciated against Ugandan Shilling to trade at the USh 25.600 while it appreciated marginally against the Tanzanian Shilling to trade at TSh 17.540 in September 2009.

The benchmark 91-day Treasury bill maintained its stability in September by recording its average rate within the range of 7.22 – 7.55 per cent witnessed over the year. The Treasury bill rose to trade at 7.30 per cent in September 2009 up from 7.25 per cent recorded the previous month. The weighted average lending rate offered by Commercial banks for loans and advances declined marginally from 13.76 per cent to 13.74 per cent over the same period while savings rate offered by the commercial banks remained constant.

The activities at the Nairobi Stock Exchange (NSE) remained constrained in the third quarter of 2009 compared to the same quarter of 2008. The 20-share index (NSE 20) declined marginally from 3,102.7 points in August 2009 to 3,005.5 points in September 2009. However, total value of shares traded increased by 12.7 per cent from KSh 3.15 billion in August 2009 to KSh 3.55 billion in September 2009 while total number of shares declined significantly by 17.5 per cent from 280.9 million shares to 231.7 million shares over the same period.

Broad money supply (M3) expanded marginally from KSh 982.9 billion in August 2009 to KSh 986.9 billion in September 2009 while money and quasi-money (M2) also expanded by 1.7 per cent from KSh 835.2 billion to KSh 849.4 billion over the same period.

Gross Total Foreign Exchange Reserves contracted significantly by KSh 8.4 per cent from KSh 366.9 billion in August 2009 to KSh 336.1 billion in September 2009 while Net Foreign Exchange Reserves also contracted significantly by 12.9 per cent from KSh 272.6 billion to KSh 237.5 billion over the same period.

SECTORAL PERFORMANCES

a). Agriculture

The Nairobi Coffee Exchange was in recess in July 2009 while total coffee auctioned in August 2009 stood at 4,027 MT, which was the lowest to be auctioned at the exchange this year. Its average auction price stood at KSh 258.55 per kilogram, the highest recorded in 2009.

Quantity of processed tea declined marginally from 21,510 MT in July 2009 to 21,231 MT in August 2009. However, average auction price for processed tea increased from KSh 222.56 per kilogram in July 2009 to KSh 233.94 per kilogram in August 2009, the highest price in 2009.

Average price for dry maize increased marginally from KSh 37.6 per kilogram in July 2009 to KSh 37.8 per kilogram in August 2009 while average price for dry beans increased from KSh 69.1 per Kilogram to KSh 74.6 per kilogram over the same period.

b). International Trade

Total quantity of coffee exported declined further in August 2009 by 7.6 per cent from 5,872.4 MT in July 2009 to 5,427.8 MT in August 2009 while its export value declined by 5.0 per cent from KSh 1,427.90 million to KSh 1,355.8 million over the same period.

Total quantity of tea exported declined significantly by 28.0 per cent from 29,981.7 MT in July 2009 to 21,598.20 MT in August 2009 while its value declined significantly by 23.6 per cent from KSh 6,548.50 million to KSh 5,003.2 million over the same period.

Quantity of horticultural produce exported declined further by 12.2 per cent from 14,545 MT in July 2009 to 12,771 MT in August 2009 while export value of horticultural produce also declined further by 6.7 per cent from KSh 3,555 million to KSh 3,318 million over the same period. The decline in horticultural produce may be attributed to the decline in cut flowers, fruits and vegetables by 5.3, 36.0 and 7.3 per cent, respectively.

Volume of trade declined further by 7.8 per cent from KSh 95,271.15 million in July 2009 to KSh 87,814.58 million in August 2009. This was due to a decline in total exports by 11.1 per cent and total imports by 6.2 per cent over the same period.

Available data for major domestic exports by Broad Economic Category (BEC) indicates that the decline in exports by 13.1 per cent could be attributed to the decline in consumer

goods not elsewhere specified and non food industrial supplies. However, shares of exports for food and beverages and non food industrial supplies went up to stand at 42.56 and 28.65 per cent respectively while share of consumer goods not elsewhere specified went down to 24.56 per cent in August 2009 from 25.75 per cent in July 2009.

Imports by Broad Economic Category (BEC) indicate that the decline in imports by 6.2 per cent was driven by declines in imports of non food industrial supplies, machinery and other capital goods and transport equipment. However, value of imports of fuel and lubricants rose from KSh 11,691.2 million in July 2009 to KSh 10,903.9 million in August 2009.

c). Energy

Total electricity generation increased by 5.4 per cent from 551.6 million KWh in July 2009 to the highest generation this year of 581.6 million KWh in August 2009. The increase was supported by good generation by all the local electricity generation sources. Hydro generation increased marginally by 1.7 per cent while generation from thermal and geothermal rose by 8.5 and 9.3 per cent, respectively over the same period. In the same period, total domestic consumption of electricity declined marginally from 439.4 million KWh to 439.3 million KWh. Power losses deteriorated by 27.5 per cent from 109.7 million KWh to 139.9 million KWh over the same period.

Exports of electricity to Uganda declined from 2.49 million KWh in July 2009 to 2.44 million KWh in August 2009 while total imports of electricity from Uganda and Tanzania declined marginally from 1.9 million KWh to 1.8 million KWh over the same period.

Total consumption of petroleum products increased by 4.0 per cent from 1,389.14 thousand MT in the first half of 2008 to 1,444.92 thousand MT in the same half of 2009. The improvement in consumption of petroleum products was contributed by increases in consumption by light diesel, motor spirit and illuminating kerosene by 10.8, 17.1 and 25.8 per cent, respectively over the same period.

In the domestic market, average retail prices for motor gasoline, light diesel oil and illuminating kerosene in Kenya picked an upward trend in June 2009. Average retail prices for motor gasoline, light diesel oil and illuminating kerosene rose to retail at KSh 80.30, KSh 68.77 and KSh 59.75 per litre in August 2009 compared to KSh 80.23, KSh 69.58 and KSh 60.19 per litre in July 2009, respectively.

In the international market, the price of Murban crude oil declined by 5.0 per cent from US Dollars 72.75 per barrel in August 2009 to US Dollars 69.10 per barrel in September 2009.

d). Manufacturing and, building and construction

Domestic production of sugar declined significantly by 30.2 per cent from 47,410 MT in June 2009 to 33,078 MT in July 2009. Production of soft drinks rose by 18.6 per cent from 26,228 MT in July 2009 to 31,113 MT in August 2009.

Production of new assembled vehicles dropped by 1.8 per cent from 493 assembled vehicles in July 2009 to 484 assembled vehicles in August 2009. Production of galvanized sheets also declined by 1.4 per cent from 17,497 MT in July 2009 to 17,253 MT in August 2009.

Quantity of cement produced declined from 243.2 thousand MT in July 2009 to 206.9 thousand MT in August 2009, a 14.9 per cent drop. Cement consumption declined marginally by 1.6 per cent from 209.6 thousand MT in August 2009 to 206.3 thousand MT in September 2009.

Milk deliveries to the formal milk increased by 3.3 per cent from 33.9 million litres in July 2009 to 35.0 million litres in August 2009

e). Tourism and Transport

The tourism sector suffered in September 2009 when tourism arrives which had picked up in the previous months dwindled by 24.2 per cent. The number of visitors who arrived in the country declined from 100,314 visitors in August 2009 to 76,022 visitors in August 2009 as recorded by visitor arrivals in JKIA and MIA.

The number of passengers who embarked at Jomo Kenyatta International Airport (JKIA) declined by 18.0 per cent from 146,282 persons in August 2009 to 119,935 persons in September 2009 while number of passengers who landed declined further by 15.4 per cent from 138,538 persons to 117,246 persons over the same period.

Total number of vehicles registered increased significantly by 49.3 per cent from 9,011 vehicles registered in August 2009 to 13,452 vehicles in September 2009. The increase was as a result of a high registration of motor cycles by 90.5 per cent over the same period.

TABLE 1: KENYA CONSUMER PRICE INDICES AND INFLATION RATE

Base Oct 1997=100.

PERIOD	NAIROBI INDEX	REST* OF URBAN TOWNS INDEX	OVERALL KENYA INDEX	OVERALL MONTH ON MONTH INFLATION	UNDERLYING INFLATION RATE****
2008					
August	286.94	288.80	288.06	27.6	8.8
September	293.65	291.86	292.57	28.2	9.5
October	297.15	294.20	295.38	28.4	10.2
November	302.93	301.04	301.79	29.4	10.7
December	308.18	305.01	306.28	27.7	11.1
2009					
January	328.18	283.44	318.02	21.9	11.1
February	345.09	325.31	333.21	25.1	11.0
March	362.65	334.06	345.33	25.8	7.7
April	365.39	348.70	355.36	26.1	8.1
May	353.75	345.45	348.76	19.5	7.0
June	337.35	345.72	342.38	17.8	5.8
July	327.60	344.11	337.80	17.8	4.5
August	333.78	346.10	341.19	18.4	3.5
September	337.87	349.90	345.03	17.9	3.2

Source: Kenya National Bureau of Statistics

* Rest of Urban include: Nyeri, Mombasa, Malindi, Kilifi, Meru, Garissa, Kisii, Kisumu, Nakuru, Kitale, Kabarnet, and Kakamega.

*** Provisional

FIG. 1: OVERALL MONTH ON MONTH AND UNDERLYING INFLATION RATES

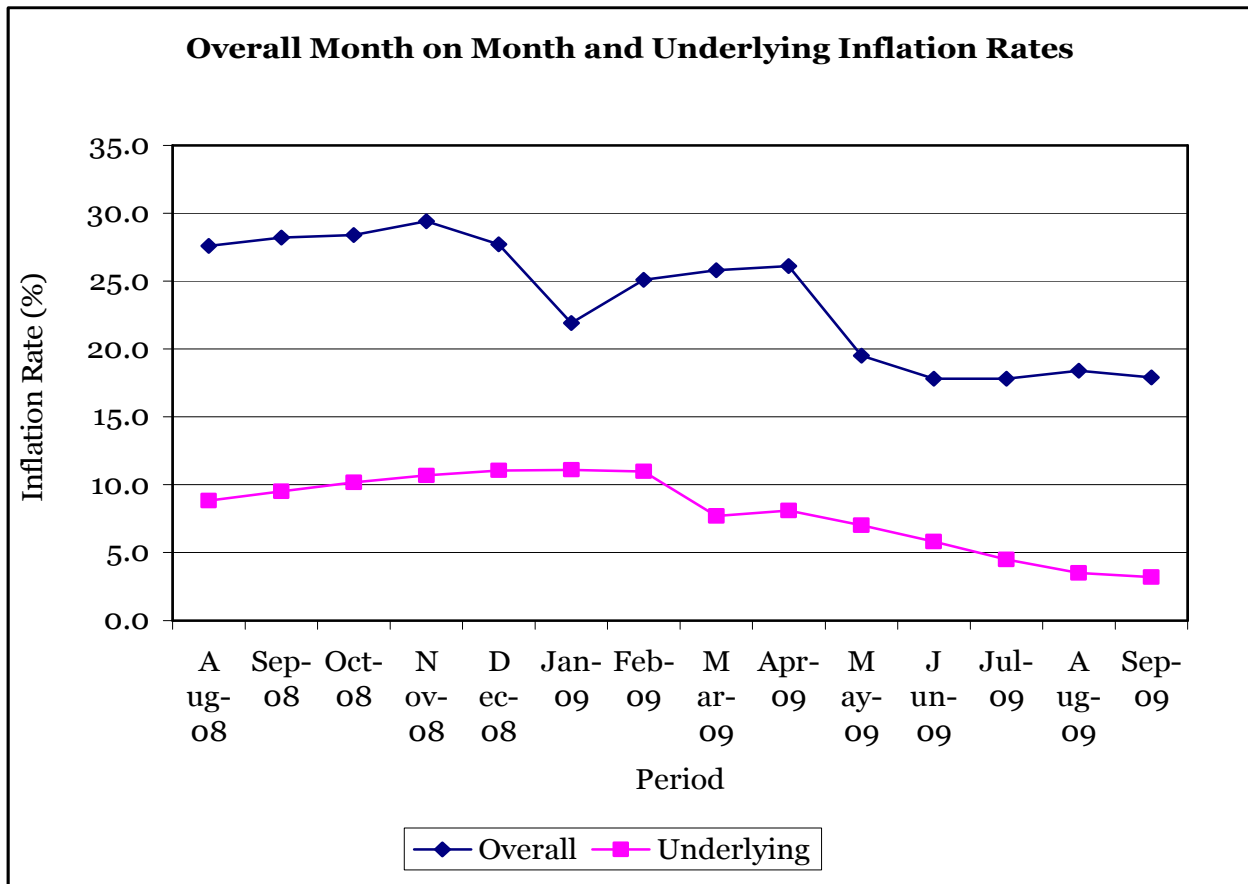


TABLE 2: MEAN FOREIGN EXCHANGE RATES OF KENYA SHILLINGS AGAINST SELECTED MAJOR CURRENCIES AT THE END OF THE MONTH

TABLE 2: Mean* Foreign Exchange Rates of Kenya Shillings against Selected Major Currencies at the End of the Month

CURRENCY	2008				2009								
	Sep	Oct	Nov	DEC	Jan	Feb	Mar	April	May	June	July	Aug	Sep
1 US Dollar	73.219	79.653	77.861	77.711	79.544	79.687	80.431	78.662	78.348	77.021	76.607	76.233	74.999
1 Sterling Pound	132.104	130.221	119.757	112.347	113.126	113.849	114.845	116.701	125.530	126.695	126.588	123.448	120.292
1 EURO	105.277	101.994	100.408	109.482	102.546	101.463	106.424	104.802	109.697	107.848	108.214	108.711	109.692
100 Japanese Yen	70.030	81.201	81.810	86.065	88.974	81.592	82.134	80.838	81.040	80.799	80.481	82.181	83.375
1 SA Rand	8.792	7.920	7.465	8.268	7.896	8.033	8.338	20.976	20.892	20.536	20.428	20.328	19.999
USHS/KES	22.815	23.603	25.392	25.125	25.005	24.879	26.514	28.349	28.463	26.844	27.517	26.957	25.600
TSHS/KES	15.932	16.352	16.371	16.793	16.280	16.477	16.350	17.035	16.880	17.074	17.296	17.283	17.540

* Mean of commercial banks buying and selling exchange rates prevailing at the end of the month

Source: Kenya National Bureau of Statistics

FIG 2: END OF MONTH MEAN EXCHANGE RATE OF KENYA SHILLINGS AGAINST MAJOR SELECTED CURRENCIES

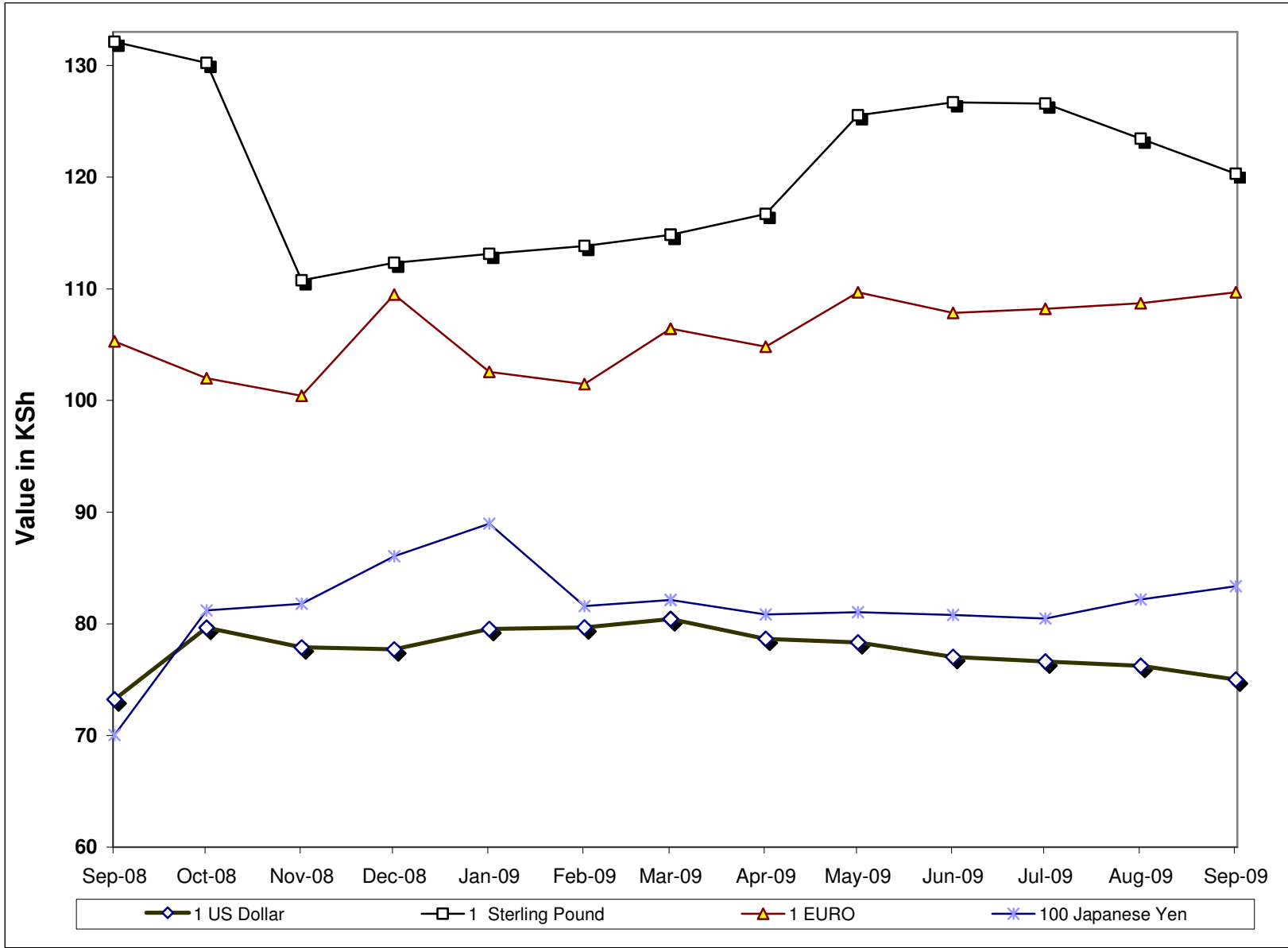


Table 3: Interest Rates (%)

MONTHS	Average Yield Rates 91 - Days Treasury Bills	Rates for Commercial Banks Loans and Advances (Weighted Average)	Overdraft Rates	Inter - Bank Rates	Savings (Commercial Banks Rates)
2008					
July	8.03	13.90	13.46	8.06	1.67
August	8.02	13.66	13.11	6.93	1.68
September	7.70	13.66	13.43	6.70	1.73
October	7.75	14.12	13.91	6.81	1.74
November	8.39	14.32	13.85	6.84	1.61
December	8.59	14.87	14.39	6.68	1.65
2009					
January	8.47	14.78	13.84	5.92	2.10
February	7.55	14.67	13.46	5.49	2.13
March	7.31	14.87	13.78	5.72	1.90
April	7.34	14.71	13.66	5.73	1.91
May	7.45	14.85	14.13	6.55	1.67
June	7.33	15.09	14.41	2.98	2.08
July	7.22	14.79	13.94	2.67	1.67
August	7.25	14.76	13.90	3.68	1.65
September	7.30	14.74	13.76	3.51	1.65

Source : Central Bank of Kenya

FIG 3: INTEREST RATES

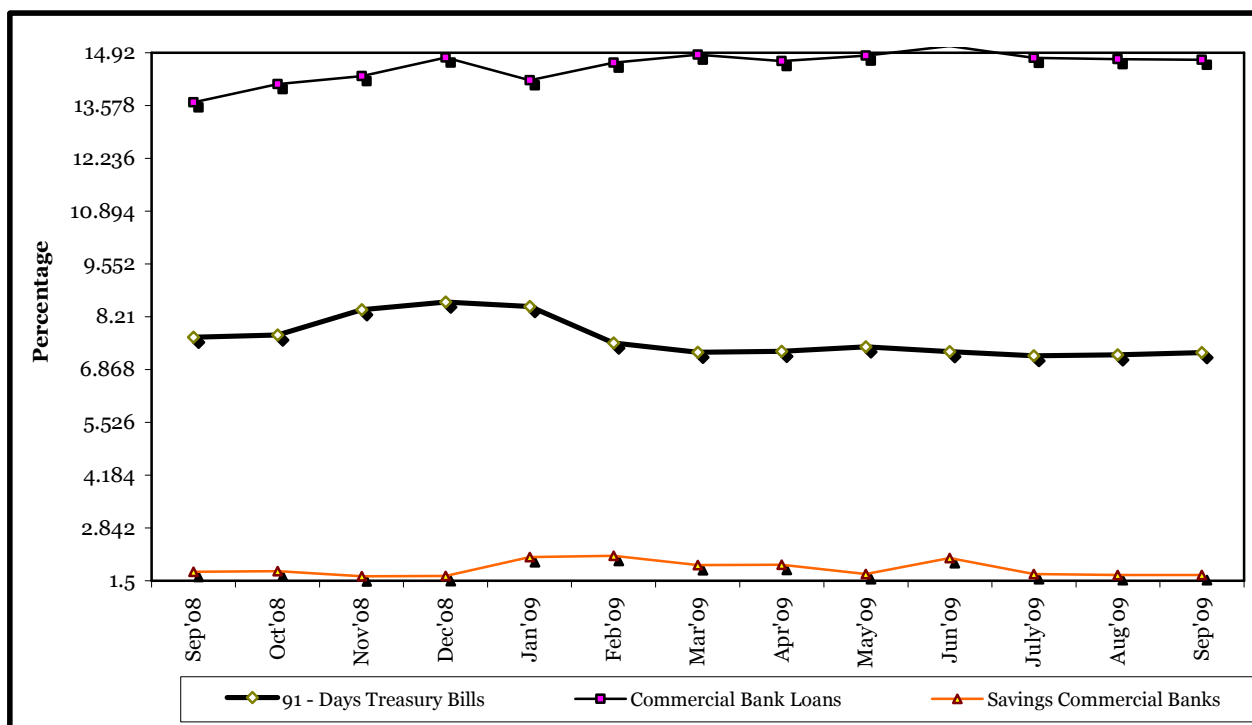


TABLE 4: CAPITAL MARKETS – NAIROBI STOCK EXCHANGE

TABLE 4: CAPITAL MARKETS -NAIROBI STOCK EXCHANGE

MONTH	NUMBER OF TRANSACTIONS	NUMBER OF SHARES ('000)	VALUE OF SHARES ('000 KShs)	SHARES INDEX Base Jan 1966=100
Jul-08	132,507	983,747	14,282,189	4,868.3
Aug-08	83,372	490,810	7,490,223	4,648.8
Sep-08	66,060	485,283	6,787,824	4,180.4
Oct-08	44,190	393,530	3,642,410	3,386.7
Nov-08	48,277	290,953	3,723,721	3,341.5
Dec-08	29,302	170,900	4,620,000	3,521.2
Jan-09	37,310	177,553	2,624,391	3,198.9
Feb-09	30,977	159,640	1,645,278	2,474.8
Mar-09	35,328	207,390	2,414,121	2,805.0
Apr-09	37,732	215,560	2,554,381	2,800.1
May-09	32,343	308,000	2,692,036	2,852.6
Jun-09	41,679	377,560	2,759,139	3,294.6
Jul-09	41,929	296,192	3,261,625	3,273.1
Aug-09	31,697	280,892	3,149,211	3,102.7
Sep-09	29,690	231,692	3,547,591	3,005.5

Source : Nairobi Stock Exchange

FIG 4: NAIROBI STOCK EXCHANGE SHARES INDEX

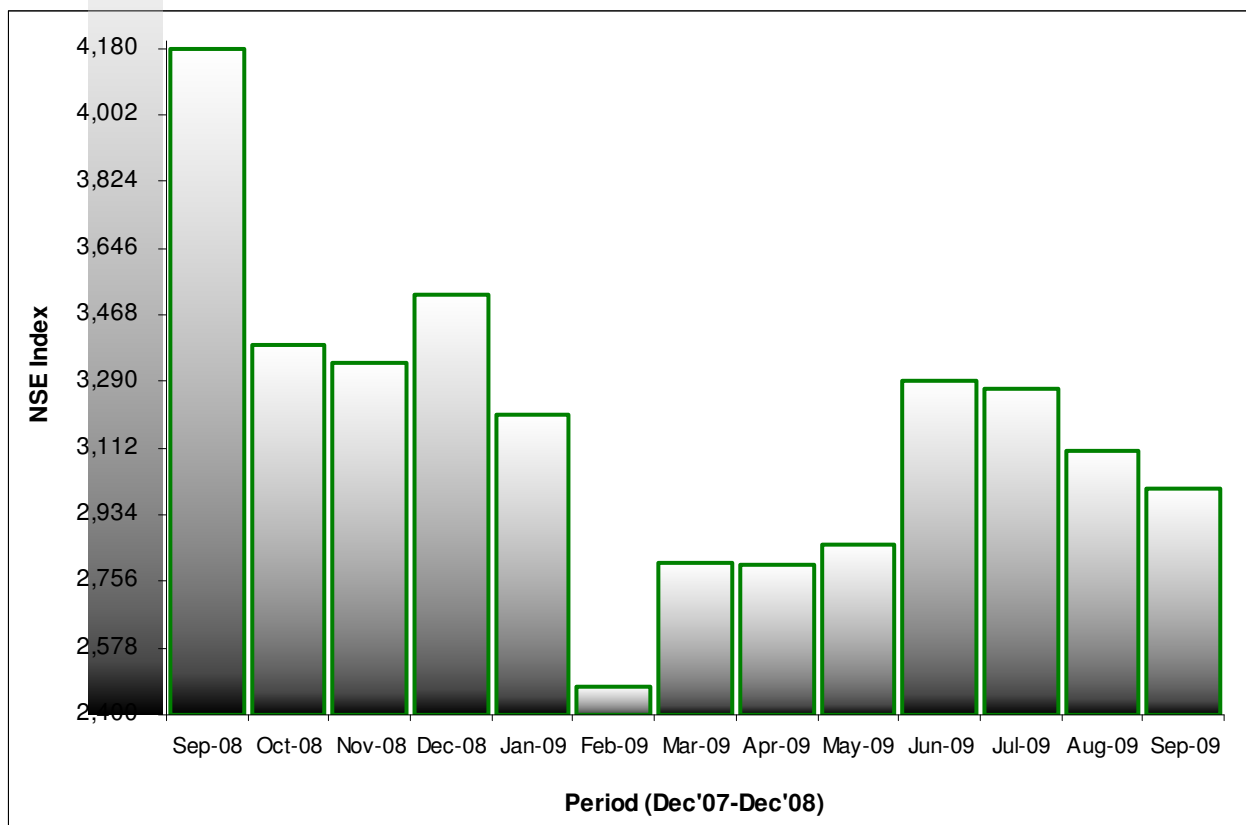


TABLE 5 (a): MONEY SUPPLY

KSh Million

As at end of	MONEY AND QUASI MONEY (M2)			BROAD MONEY (M3)***	% CHANGE****	
	MONEY (M1)*	QUASI - MONEY				
		(Commercial Banks)**	(NBFIs)			TOTAL (M2)
2008						
August	383,424	328,254	12,678	724,356	854,952	0.53
September	385,004	338,783	12,677	736,464	859,328	0.51
October	398,571	342,978	12,489	753,883	883,497	2.81
November	393,400	345,872	12,912	751,184	890,233	0.76
December	392,778	360,300	13,531	766,471	901,055	1.22
2009						
January	398,736	352,411	12,623	763,876	895,397	-0.63
February	380,498	374,485	13,343	768,326	900,031	0.52
March	408,331	358,243	14,082	780,656	906,071	0.67
April	382,800	396,291	14,488	793,579	928,839	2.51
May	392,856	387,507	15,353	795,716	928,604	-0.03
June	400,653	396,114	15,591	812,358	950,239	2.33
July	427,483	386,259	14,964	828,706	973,623	2.46
August	433,609	386,681	14,888	835,178	982,854	0.95
September	433,354	400,535	15,508	849,397	986,901	0.41

Source : Central Bank of Kenya

* Currency in circulation less cash in banks plus all demand deposits except those of Central Government, Local Govt, Banks, non residents and foreign currency deposits.

** All other deposits in commercial banks except those of Central Government.

*** Broad Money (M3) includes M2 and Quasi - Money supplied by Non Bank Financial Institutions

**** Compared with previous month.

***** Provisional

*****From January 2006 in line with the harmonisation of definitions of monetary aggregates within East African Countries(EAC) monetary definitions have been redefined for the following aggregates.

1. Base money =currency outside banks plus deposits at the Central Bank

2.Narrow Money (M1) =currency in circulation plus demand deposits

3. Broad Money M3 in the old series becomes broad money (M2) and is defined as M1 plus net Quasi Monetary

deposits liabilities of both commercial banks and NBFIs

4.M3X in the old series becomes extended broad money supply (M3) and is defined as new M2 plus foreign currency deposits(FCDs)

5. M3XT in the old series is redefined as M4 and consists of new M3 plus other liquid assets.

FIG 5: MONEY SUPPLY (M3)

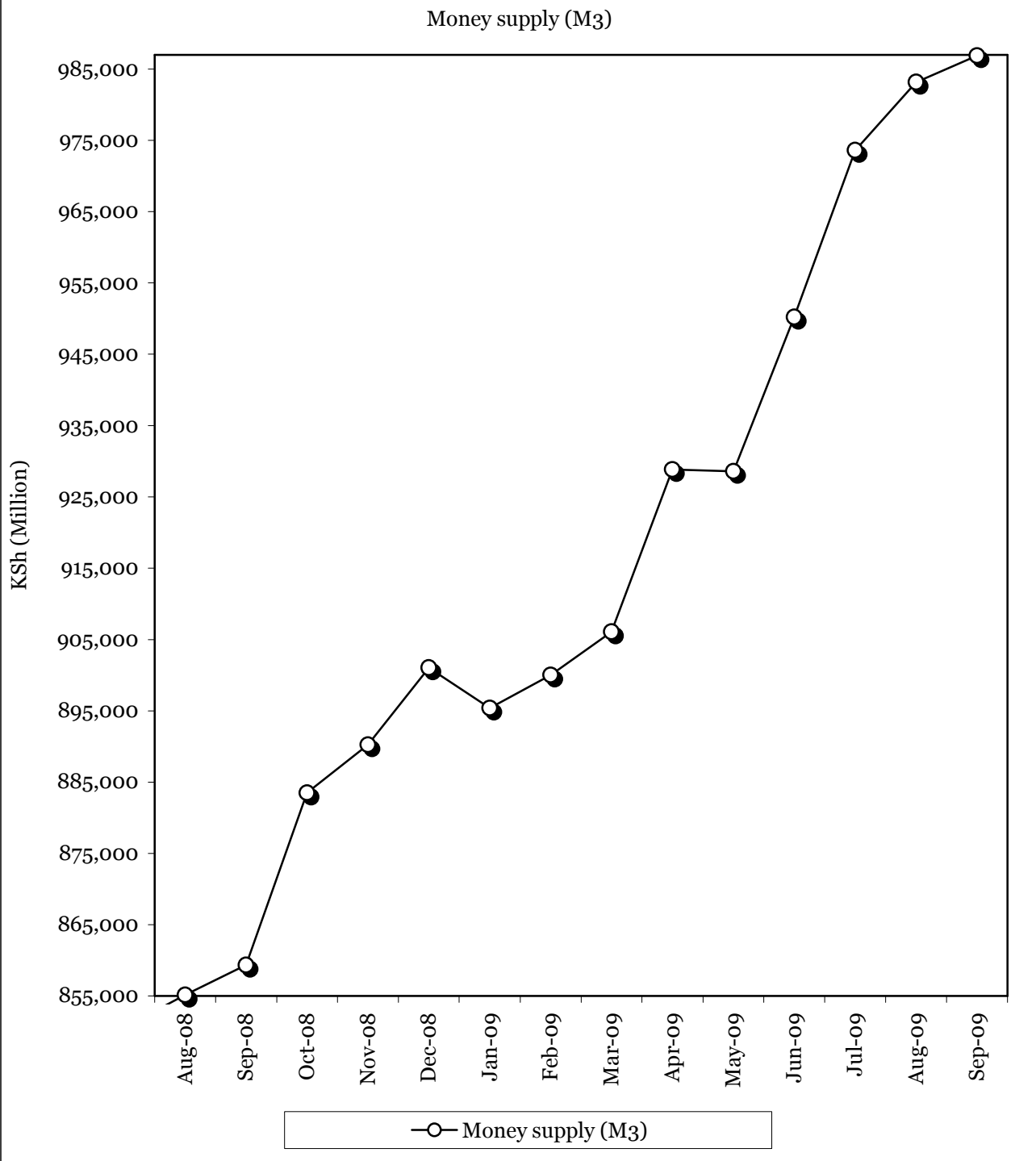


TABLE 5b: FOREIGN EXCHANGE RESERVES

MONTHS	CENTRAL MONETARY AUTHORITY			COMMERCIAL BANKS	GROSS TOTAL	NET FOREIGN EXCHANGE
	CENTRAL BANK	CENTRAL GOVERNMENT	TOTAL			
KSh. Million						
2008						
August	224,770	1,395	226,165	139,078	365,243	271,084
September	231,449	1,471	232,920	136,265	369,185	264,904
October	234,167	1,546	235,713	143,976	379,689	273,651
November	224,119	1,502	225,621	128,823	354,444	260,076
December	223,549	1,533	225,082	137,185	362,267	260,593
2009						
January	220,115	1,553	221,668	125,621	347,289	261,973
February	218,391	1,515	219,906	128,258	348,164	259,398
March	217,444	1,548	218,992	129,215	348,207	267,802
April	214,777	1,548	216,325	136,300	352,625	279,198
May	228,578	1,548	230,126	112,920	343,046	261,865
June	246,970	1,548	248,518	123,618	372,136	279,709
July	245,554	1,548	247,102	123,813	370,915	287,432
August	248,263	1,548	249,811	117,049	366,860	272,644
September	219,993	1,548	221,541	114,538	336,079	237,547

Source : Central Bank of Kenya

* Central Government includes reserve position in the Fund and deposits with Crown Agents.

- data not yet available

* Provisional

FIG 6: FOREIGN EXCHANGE RESERVES

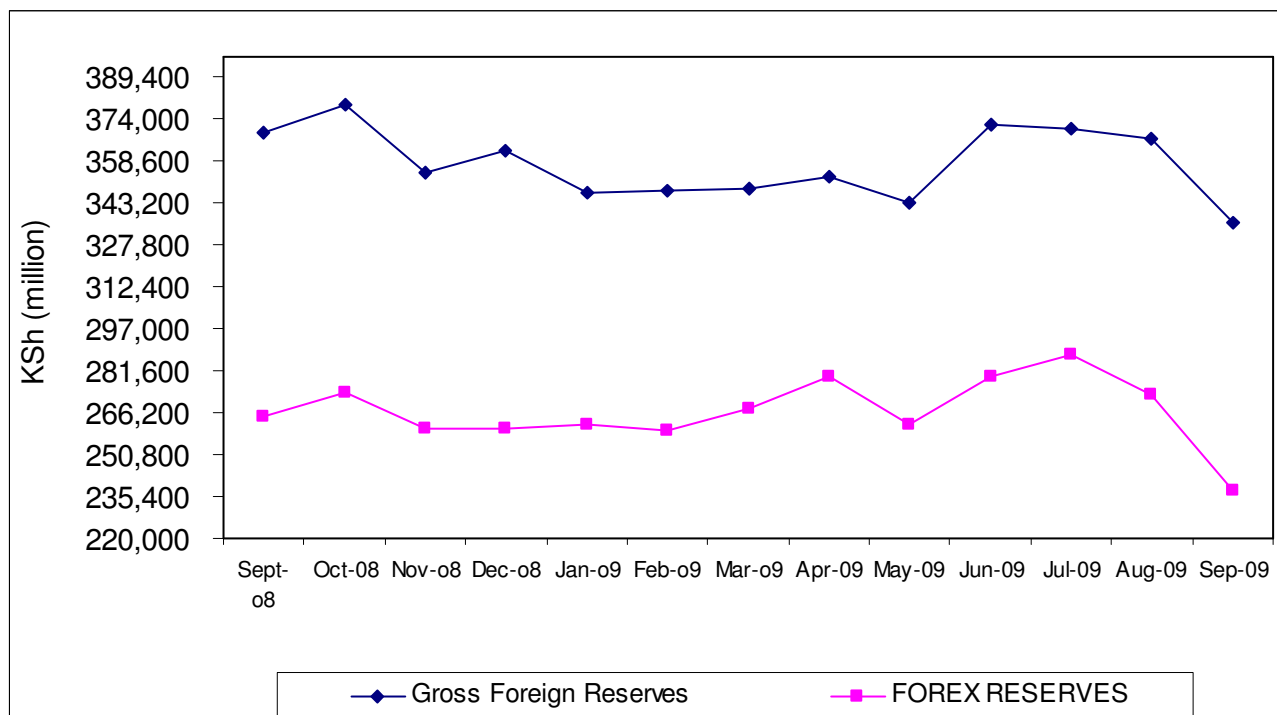


TABLE 6: COFFEE SALES AND PRICES

Months	2007			2008***			2009***		
	QUANTITY (MT)	PRICE (\$ /kg)	PRICE (Ksh /kg)	QUANTITY (MT)	PRICE (\$ /kg)	PRICE (Ksh /kg)	QUANTITY (MT)	PRICE (\$ /kg)	PRICE (Ksh /kg)
January	4,670	2.88	201.48	2,344	2.89	203.63	5,643	2.01	159.90
February	5,064	3.03	211.04	4,899	3.12	220.19	6,356	2.17	172.92
March	6,839	2.99	207.62	6,117	3.09	193.98	8,721	3.13	156.29
April	6,324	2.67	182.91	6,374	2.72	169.14	7,129	2.88	144.22
May	6,991	2.47	166.41	3,179	2.34	144.93	5,763	2.69	210.43
June	5,451	2.18	145.61	0	0.00	0.00	4,297	2.64	205.71
July	4,669	2.11	141.77	1,957	2.64	177.50	0	0	0
August**	0	0	0	2,173	2.61	179.50	4,027	3.39	258.55
September	3,817	2.36	157.96	3,878	2.37	173.56			
October	4,252	2.24	150.18	2,253	1.66	132.37			
November	2,895	2.21	142.15	2,517	1.95	151.92			
December	1,296	2.86	178.73	3,014	2.08	161.50			
Annual	52,269	2.56	173.91	38,704	2.60	177.22			

Source : Coffee Board of Kenya

* Auction Price

** Nairobi Coffee Exchange was in recess for most of August 2003, 2005, 2006, 2007, June 2008 and July 2009

*** Figures subject to revision

NB: MT denotes Metric Tonnes

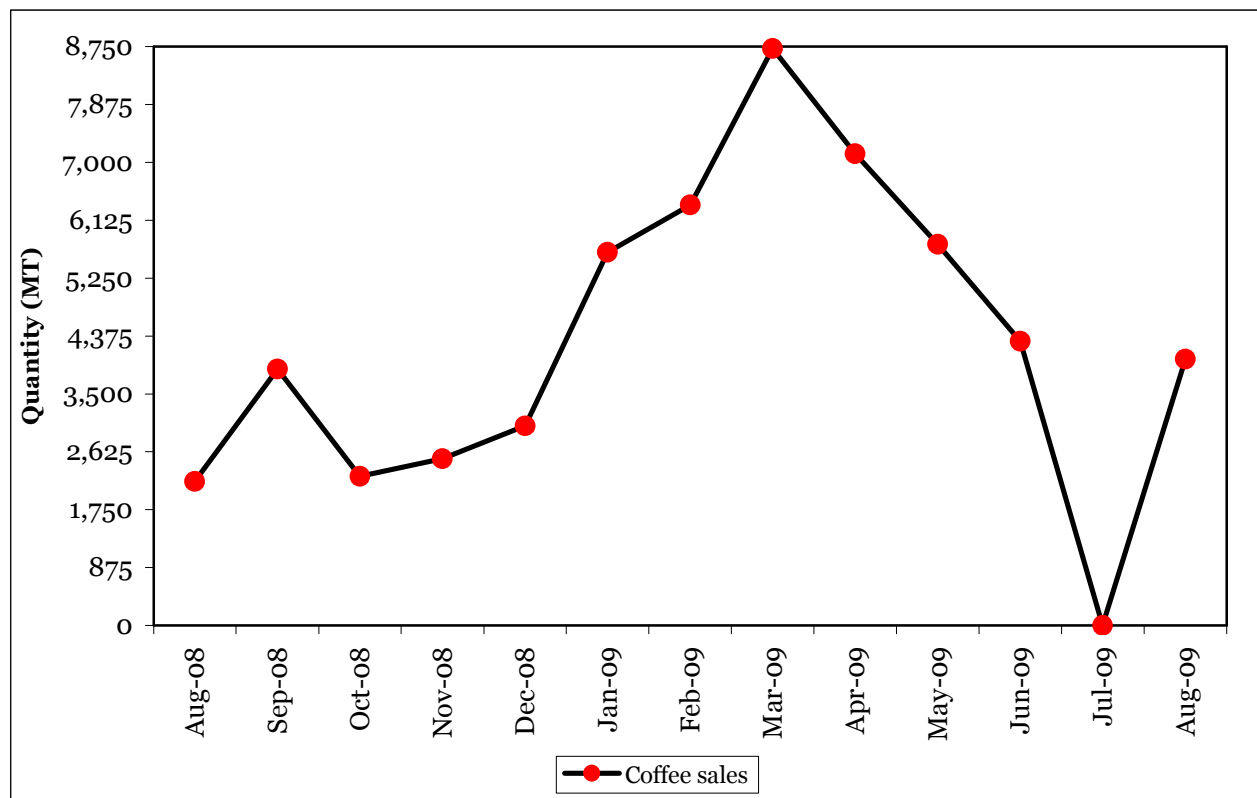
FIG.7: COFFEE SALES AT THE NAIROBI COFFEE EXCHANGE

TABLE 7: TEA PRODUCTION AND PRICES*

Months	2008**			2009**		
	QUANTITY	PRICE*	PRICE*	QUANTITY	PRICE*	PRICE*
	(MT)	(\$/kg)	(KShs/kg)	(MT)	(\$/kg)	(KShs/kg)
January	29,745	2.28	153.94	25,484	2.30	182.33
February	24,094	2.42	169.94	21,537	2.27	180.89
March	16,916	2.21	145.10	18,779	2.32	184.04
April	27,415	2.31	143.67	18,343	2.43	193.53
May	36,402	2.28	140.85	29,803	2.49	194.33
June	22,817	2.43	154.16	25,337	2.70	210.35
July	24,239	2.55	169.00	21,510	2.90	221.79
August	24,494	2.77	187.60	21,231	3.06	233.94
September	32,061	2.81	195.36			
October	35,307	2.29	175.90			
November	34,406	1.88	146.80			
December	37,922	1.89	146.21			
Annual	345,816	2.32	160.41			

Source:Tea Board of Kenya

MT for Metric Tonnes

*Auction prices

**Figures subject to revision

FIG.8: TEA PRODUCTION

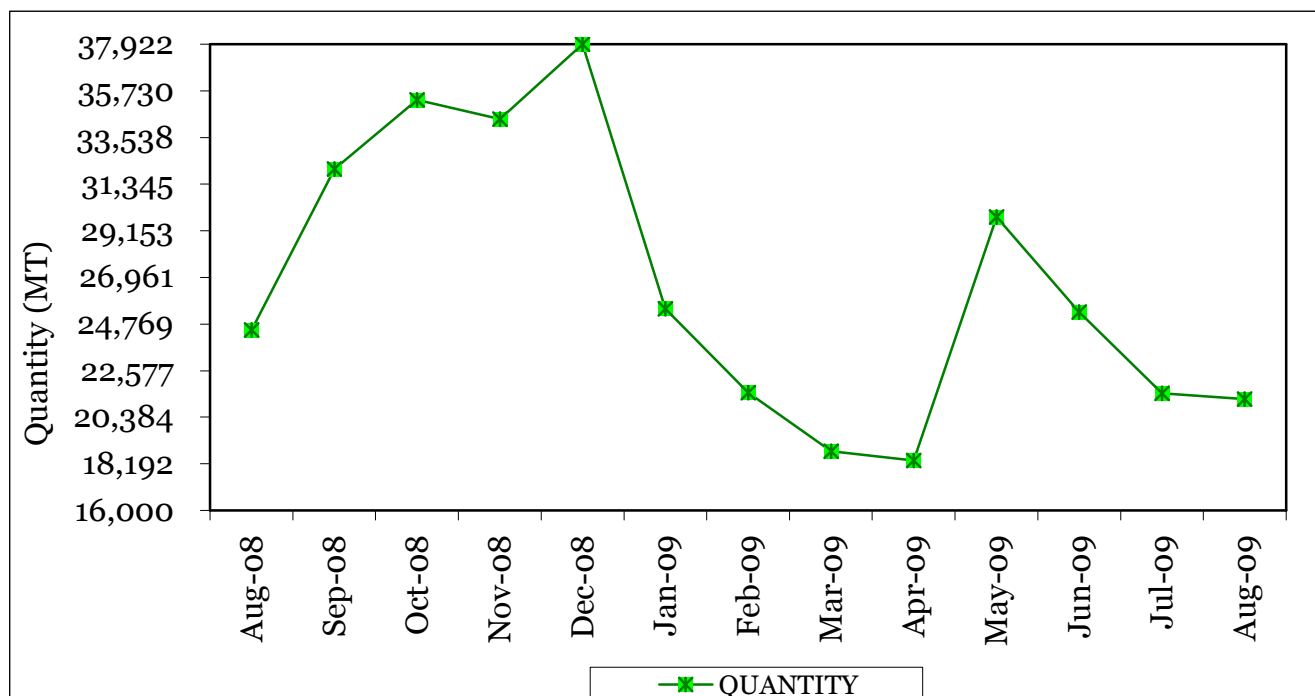


Table 8(a): Average Monthly Retail Prices for Dry Maize in the Year 2008

	Ksh/kg											
Market	Jan	Feb	Mar	Apr	May	June	July	Aug	Sep	Oct	Nov	Dec
KIAMBU	20.0	20.0	20.0	19.2	25.0	30.0	26.3	30.0	30.0	30.0	35.0	26.3
LIMURU	17.5	17.5	17.5	22.5	25.0	26.3	.	27.5	30.0	30.0	32.5	30.0
THIKA	19.7	21.9	16.7	19.1	18.2	.	.	28.6	35.0	.	.	.
GATUNDU	17.9	23.8	23.8	19.1	19.1	.	.	30.4	36.4	31.8	.	.
MUTHITHI	19.1	14.6	.	21.1	24.9	24.0	30.0	30.0	32.5	35.0	35.0	.
MUKUYU	17.5	18.4	17.7	20.3	35.5	27.6	29.3	44.3	30.0	44.8	33.3	32.6
KIRIAINI	16.7	16.7	19.1	19.1	25.4	49.3	50.5	.	.	.	33.3	33.3
ENGINEER	15.0	.	15.9
NANYUKI	18.2	18.5	20.0	22.5	24.0	24.4	22.5	25.0	25.0	25.0	35.0	30.0
NYAHURURU	20.0	20.0	17.5	17.7	20.0	20.0	22.5
MARIAKANI	20.0	20.0	20.0	23.5	25.0	25.0	25.0	30.0	30.0	30.0	.	.
KALOLENI	20.0	20.0	20.7	24.5	25.0	25.0	25.0	25.0	30.0	30.0	.	.
MALINDI	27.8	27.8	27.8	26.9	28.4	30.0	.	28.0	28.0	30.0	30.0	30.0
KIBAUNI KILIFI	20.0	20.0	20.7	25.0	25.0	25.0	27.0	25.0	25.0	30.0	.	.
UKUNDA	22.5	.	30.0	36.0	36.0
MWEMBE TAYARI	25.0	20.0
MACKINON	.	.	30.0	30.0	34.0	30.0	30.0
SEGA	24.0
KONGOWEA	25.0	20.0
GARSEN	25.0	22.5	20.0	23.3	25.0	30.0	15.0
RUNYENJES	15.0	15.0	25.8	20.0	20.0	10.0	32.5
EMBU TOWN	17.5	18.8	15.0	20.0	20.0	.	.	30.0	35.0	26.3	.	.
SIKAGO	17.5	17.5	15.0	17.5	18.5	29.4	.	20.0	25.9	31.8	33.3	30.7
MWINGI	16.0	16.0	16.0	16.5	19.0	.	.	.	28.0	.	.	.
MIGGWAINI	.	.	14.0	14.0	17.8	21.0	.	.	28.0	30.0	.	.
KALUNDU	15.0	16.0	17.0
MACHAKOS TOWN	16.0	17.0	17.0	32.0	30.0
TALA	16.0	18.0	17.0	15.7	17.1	.	.	27.0	28.0	28.0	25.0	31.9
MAUA	.	.	21.3	25.0	31.7	.	.	37.5	37.5	30.0	30.0	30.0
KIANJAI	.	.	16.7	19.5	20.0	.	.	31.1	.	35.6	35.6	29.2
GAKROMERE	13.6	16.0	12.7	24.3	18.3	.	18.2	.	.	27.3	31.8	.
WOTE	17.0	17.0	18.0	18.0	20.0	22.0	.	.	27.0	27.0	32.0	32.0
GARISA TOWN	.	.	25.0	.	30.3
DARAJA MBILI	17.3	20.5	18.6	20.0	23.0	24.6	22.7	24.1	24.1	31.8	31.8	.
KIBIRIGO	.	20.5	20.5
NYANGUSU	14.3	.	16.7	.	.	31.0	.	25.0
RIOCHANDA	.	16.8	21.4
NYABITE	.	16.0	20.5
MOGONGA	14.3	14.3	.	.	.	31.0
NYAMACHE	16.7	17.1	17.5	.	.	31.0
KIBUYE	.	17.3	18.2	21.4	29.6	27.3	22.7	.
AHERO	23.8	22.7	22.7	27.3	28.5	27.3	29.6	.
KIBOSWA	.	19.1	22.7	27.3	25.0	27.3	25.0	.
SONDU	20.5	20.5	.	.	27.3	27.3	31.8	.
BONDO	20.0	20.0	20.0	29.0	25.0	25.5	27.5	27.0	26.5	26.5	.	.
SIAYA	22.7	16.4	19.6	27.3	27.3	.
NGIYA	18.2	22.7	17.3	27.3	29.6	.
UNGUNJA	22.7	15.2	17.3	18.2	27.3	29.6	.
OYUGIS	.	18.6	20.0
KEHACHA	.	17.5	20.0	21.2	24.4	25.0
KABARNET	15.0	15.0	15.0	17.2	22.8	25.0	25.0	25.0	30.0	30.0	.	.
NAKURU TWON	24.2	21.7	22.2	22.2	22.2	.	27.8	27.8	27.8	27.8	27.8	27.8
KAPSABET	.	19.1	19.1	25.0	23.9	25.6	25.7	29.6	26.2	23.8	26.2	.
KITALE	.	17.5	17.5	25.0	26.7	24.1	25.8	28.6	29.5	26.2	.	.
ELDORET	20.0	15.4	15.0	15.5	19.4	22.0	22.0	26.5	31.8	25.0	20.0	20.0
BURN FOREST	12.5	15.0	15.0
TURBO	13.3	13.4	37.5	16.7	18.5	20.7	20.7	21.2	24.1	20.0	20.0	20.0
KIPKAREN	15.0	16.0	16.1	25.0	27.0	26.3	29.4	32.5	20.0	20.0	20.0	22.0
KAJIADO TOWN	25.0	20.0	.	25.0	35.0	21.7	25.0	.	25.0	40.0	40.0	40.0
BUNGOMA TOWN	16.7	16.7	16.7	16.6	20.4	26.0	25.1	25.0	25.0	27.5	30.0	29.0
KIMILILI	.	.	16.2	16.2	21.8	27.7	27.5	27.0	25.0	27.5	27.5	25.0
KAPSOKWONY	.	16.2	17.5
BUTERE	.	23.6	21.7	23.9	23.1	24.3	.	17.4	23.9	23.9	.	.
KAKAMEGA	20.5	18.2	19.6	21.4	23.6	.	26.4	19.1	22.7	27.3	.	.
MUMIAS	.	.	28.6	26.2	23.1	23.9	.	20.5	23.9	22.0	20.0	.
MUNDETA	19.1	16.7	16.7	19.1	26.2	26.2	.	26.2	28.6	28.6	28.6	.
CHEPTULA	23.8	16.7	16.7	21.4	26.2	26.2	26.2	26.2	28.6	30.0	28.6	.
Mbale	23.8	16.7	.	.	26.2	26.2	.	26.2	26.2	28.6	28.6	.
KAWANGWARE	21.0	22.0	25.0	46.5	30.0	29.3	29.3	30.0	33.3	33.0	33.3	33.3
BURMA	25.0	25.0	25.0	32.5	25.0	25.0	33.3	31.3	35.50.	38.9	38.9	44.4
KIKOMBA	21.5	22.0	22.0	23.5	26.3	35.0	35.0	30.0	36.8	35.0	35.0	36.4
KANGEMI	22.0	22.5	23.0	23.0	27.3	30.0	30.0	30.0	31.0	31.0	33.3	33.3
KOROKOCHO	20.0	20.0	21.5	23.0	21.1	26.2	38.9	36.6	33.3	33.3	33.3	36.4
TOI	21.4	21.4	23.8	23.8	26.2	28.6	28.6	31.0	31.0	31.0	33.3	33.3
Overall Average Prices	19.7	18.7	20.2	21.4	23.8	25.9	26.7	29.6	30.9	30.5	30.1	29.7

Table 8(b): Average Monthly Retail Prices for Dry Maize in the Year 2009

Maize prices 2009								
Market	JAN	FEB	MAR	APR	MAY	JUNE	JULY	AUG
KIAMBU	35.0	35.0	.	.	33.8	34.7	48.6	.
LIMURU	30.0	32.5	.	.	37.5	37.5	37.5	.
MUTHITHI	35.0	35.0	35.0	35.0	40.0	.	.	.
MUKUYU	33.3	35.0	26.0	33.3	35.7	38.1	.	.
KIRIAINI	33.3	38.1	.	35.7	38.1	38.1	.	.
NANYUKI	35.3	33.3	34.2	43.8	44.4	50.0	44.4	44.4
SIPLI	20.0	20.0	46.6	25.0
MARIAKANI	32.0
KALOLENI	32.0
MALINDI	30.0	35.0	35.0	35.0	40.0	.	.	.
KIBAUNI KILIFI	35.0
GARSEN	22.5	.	25.0	25.0	25.0	.	.	.
RUNYENJES	35.0	37.5	37.5	37.5	40.0	35.0	35.0	.
EMBU TOWN	37.5	37.5	37.5	51.2	42.5	40.0	35.0	.
SIKAGO	29.6	35.7	37.5	.	43.2	38.1	37.5	35.0
MIGWANI	.	35.0	33.0	40.0	35.0	34.0	30.0	.
MACHAKOS TOWN	31.6	33.0	32.0	33.0	38.9	32.0	33.0	.
TALA	30.0
MWENDANTU	31.8	27.3	27.3	30.0	32.0	33.0	35.0	.
WOTE	30.0	30.0	30.0	32.0	.	32.0	32.0	.
GARISSA TOWN	40.0	38.9
DARAJA MBILI	28.6	31.8	31.8	38.6	33.3	31.8	.	.
BONDO	30.0	35.0
KABARNET	25.0	29.0	30.0	35.0	35.0	.	.	.
KAPSABET	23.9	32.6	32.6	35.7	40.5	35.7	.	.
KITALE	26.2	28.6	35.0	35.0	.	37.5	35.0	.
ELDORET	27.3	29.5	29.8	31.0	33.3	40.0	40.0	40.0
TURBO	26.2	28.6	.	31.0	31.0	40.0	40.0	40.0
KIPKAREN	25.0	32.5	31.8	33.3	37.5	41.0	37.5	32.5
KAIADO TOWNSHIP	.	.	.	50.0
BUNGOMA TOWN	27.3	.	31.8	35.0	40.0	40.0	37.5	37.5
KIMILILI	37.5	40.0	.
KAPSOKWONY	42.5	40.0	.	.
MUDETE	28.6	35.7	33.3	38.1	35.7	.	.	.
CHEPTULU	28.6	33.3	33.3	38.1	35.7	.	.	.
MBALE	28.6	33.3	33.3	38.1	35.7	.	.	.
KAWANGWARE	40.0	37.5	38.1	35.7	38.1	38.1	36.4	37.1
BURMA	38.1	38.1	42.9	45.0	39.5	40.7	40.0	42.0
KIKOMBA	25.0	75.0	66.7	35.0	43.5	40.9	39.1	35.7
KANGEMI	37.5	37.5	55.0	31.8	37.5	38.0	37.5	38.0
KOROGOCHO	40.9	38.1	36.4	41.0	40.0	36.0	.	35.7
KIBERA(TOI)	35.0	35.0	35.7	40.0	40.0	39.1	38.5	35.7
Average	31.1	34.8	35.7	36.3	37.6	37.7	37.6	37.8

Source: Kenya National Bureau of Statistics

. Data not available

Table 8(c): Average Monthly Retail Prices for Dry Beans Prices (2008)

Market	Ksh per kg											
	Jan	Feb	Mar	Apr	May	Jun	Jul	Aug	Sep	Oct	Nov	Dec
KIAMBU	38.1	35.7	35.5	60.0	71.7	75.0	57.5	75.0	80.0	75.0	80.0	75.0
LIMURU	75.0	60.0	60.0	70.0	75.0	70.0	.	75.0	75.0	75.0	75.0	70.0
THIKA	55.0	54.6	54.6	45.5	60.0	.	.	.	80.0	.	.	.
GATUNDU	39.3	45.2	42.9	47.6	38.1	.	.	76.2	72.7	76.2	.	.
MUTHITHI	57.1	52.4	.	55.4	61.8	56.7	65.0	70.0	75.0	100.0	75.0	.
MUKUYU	38.1	38.1	56.1	59.1	54.8	59.1	58.1	59.1	59.1	48.9	70.5	74.6
KIRIAINI	47.8	47.8	63.6	.	60.9	60.9	72.2	.	.	.	76.2	76.2
ENGINEER	45.0	.	57.1
NANYUKI	40.0	42.5	50.0	65.0	46.7	69.8	70.8	63.6	80.0	40.8	80.0	80.0
NYAHURURU	39.1	50.0	56.2	63.8	67.5	38.3	60.0
MARIAKANI	50.0	60.0	60.0	60.0	63.3	70.0	70.0	70.0	80.0	80.0	.	.
KALOLENI	50.0	60.0	60.0	60.0	63.3	70.0	70.0	80.0	80.0	80.0	.	.
MALINDI	70.6	75.0	68.2	72.2	76.4	78.2	60.0	75.0	70.0	80.0	80.0	75.0
KIBAUNI KILIFI	60.0	60.0	65.0	53.3	66.7	70.0	68.0	68.0	70.0	80.0	.	.
UKUNDA	50.0	.	50.0	63.0	68.0
MWEMBE TAYARI	60.0	48.0
MACKINON	.	.	65.0	62.0	65.0	70.0	70.0
SEGA	55.0
KONGOWEA	70.0	55.0
GARSEN	50.0	55.0	60.0	60.0	60.0	70.0	65.0
RUNYENJES	45.0	41.3	68.8	55.0	57.5	30.0	80.0
EMBU TOWN	40.0	40.0	50.0	56.7	60.0	50.0	.	70.0	90.0	55.0	.	.
SIKAGO	40.0	42.5	50.0	55.0	53.6	66.8	.	20.0	41.4	90.9	81.8	71.4
MWINGI	40.0	40.0	50.0	60.0	50.0	.	.	.	56.0	.	.	.
MIGGWAINI	.	.	40.0	55.0	55.0	55.0	.	.	63.0	70.0	.	.
KALUNDU	50.0	58.0	70.0
MACHAKOS TOWN	55.0	45.0	45.0	70.0	47.7
TALA	27.0	40.0	40.0	55.7	57.1	.	.	70.0	70.0	68.0	70.0	70.0
MAUA	.	.	62.5	67.8	47.5	.	.	81.3	81.3	81.5	90.0	90.0
KIANJAI	.	.	50.0	56.7	50.0	.	.	66.7	.	83.3	.	35.1
GAKOROMERE	36.4	40.9	55.0	36.7	49.6	.	60.6	.	.	63.6	75.0	.
WOTE	50.0	52.5	60.0	63.0	64.5	61.5	.	.	65.0	65.0	80.0	80.0
GARISA TOWN	.	.	66.7	.	70.8
DARAJA MBILI	40.9	54.6	46.4	61.4	48.9	39.1	41.1	50.0	56.8	50.0	50.0	.
KIBIRIGO	.	45.5	47.6
NYANGUSU	28.6	.	42.9	.	.	54.6	.	36.4
RIOCHANDA	.	46.2	54.6
NYABITE	.	42.3	54.6
MOGONGA	38.1	36.4	.	.	.	54.6
NYAMACHE	27.3	47.6	40.2	.	.	52.3
KIBUYE	.	65.9	68.2	68.2	72.7	59.5	45.5	.
AHERO	61.9	61.9	72.5	52.4	56.8	.
KIBOSWA	.	77.3	47.7	72.7	59.1	68.2	45.5	.
SONDU	52.4	52.4	.	.	54.6	59.1	45.5	.
BONDO	.	85.0	85.0	69.2	85.0	87.5	80.0	80.0	80.0	90.0	.	.
SIAYA	54.6	53.0	90.9	81.8	90.9	.
NGIYA	47.2	54.6	68.2	90.9	68.2	.
UNGUNJA	45.5	52.3	51.1	72.7	63.6	68.2	.
OYUGIS	.	66.4	71.4
KEHACHA	.	54.6	68.2	66.7	59.1	54.6
KABARNET	50.0	50.0	50.0	59.6	72.3	75.0	75.0	60.0	37.5	75.0	.	.
NAKURU TWON	52.2	38.9	38.9	51.1	36.1	38.9	33.3	33.3	33.3	33.3	66.7	66.7
KAPSABET	.	71.4	68.2	72.7	71.0	60.9	46.5	68.2	72.7	72.7	68.2	.
KITALE	.	54.1	54.6	68.2	74.4	68.2	49.5	57.1	54.6	.	.	.
ELDORET	59.1	43.2	68.2	75.2	78.0	63.0	62.5	62.5	70.0	65.0	65.0	70.0
BURN FOREST	68.2	68.2	60.9
TURBO	42.5	53.8	.	70.0	73.8	67.0	53.0	50.0	50.0	50.0	65.0	67.5
KIPKAREN	45.5	54.6	54.6	68.2	62.5	60.6	37.0	54.6	60.0	63.6	63.6	63.6
KAJIADO TOWN	60.0	70.0	80.0	36.0	67.5	66.7	50.0	60.0	70.0	80.0	80.0	80.0
BUNGOMA TOWN	47.6	61.9	68.2	.	60.6	64.8	65.2	52.4	70.0	70.0	70.0	70.0
KIMILILI	.	.	.	46.7	67.1	66.7	80.0	60.0	70.0	57.5	65.0	60.0
KAPSOKWONY	.	40.5	47.0
BUTERE	55.8	56.5	50.8	73.9	70.5	50.3	.	54.6	68.2	68.2	.	.
KAKAMEGA	54.6	68.2	59.1	50.0	36.4	.	59.1	59.1	63.6	.	.	.
MUMIAS	.	.	.	70.5	70.1	58.4	.	50.0	68.2	38.1	40.0	.
MUNDETA	71.4	71.4	71.4	71.4	61.9	61.9	.	71.4	71.4	83.3	71.4	.
CHEPTULA	65.0	71.4	71.4	71.4	71.4	71.4	71.4	76.2	76.2	83.3	76.2	.
Mbale	.	65.2	.	.	71.4	64.3	.	71.4	71.4	76.2	76.2	.
KAWANGWARE	45.0	50.0	60.0	68.0	70.0	72.7	53.1	80.0	80.0	86.4	90.5	90.5
BURMA	45.0	50.0	50.0	60.0	70.0	80.0	80.0	81.8	.	83.3	83.3	75.0
KIKOMBA	48.0	50.0	60.0	65.0	80.0	75.0	83.3	88.9	88.9	86.0	88.9	81.8
KANGEMI	45.0	55.0	65.0	70.0	75.0	80.0	80.0	80.0	85.7	85.7	90.5	90.5
KOROKOCHO	43.5	45.0	50.0	62.5	62.5	72.7	72.7	90.0	90.0	87.0	87.0	79.2
TOI	47.6	50.0	63.6	72.7	76.2	76.2	76.2	85.7	85.7	85.7	90.5	90.5
Overall Average Prices	50.1	52.9	56.8	60.9	64.2	63.3	60.3	66.0	68.7	69.8	72.3	69.1

Table 8(c): Average Monthly Retail Prices for Dry Beans Prices (2009)

Beans prices 2009								
Market	JAN	FEB	MAR	APR	MAY	JUNE	JULY	AUG
KIAMBU	80	80	.	.	62.5	57.725	54.285	.
LIMURU	80	80	.	.	70	75	75	.
MUTHITHI	75	75	75	75	75	.	.	.
MUKUYU	63.64	76.19	46.365	76.19	72.73	68.18	.	.
KIRIAINI	69.57	69.57	.	71.43	61.9	69.805	.	.
NANYUKI	100	88.89	77.975	100	88.89	100	88.89	88.89
SIPILI	60	60	60	70
MARIAKANI	80
KALOLENI	80
MALINDI	75	80	70	80	70	.	.	.
KIBAUNI KILIFI	80
GARSEN	70	.	80	80	70	.	.	.
RUNYENJES	80	85	85	85	80	60	60	.
EMBU TOWN	80	80	85	50.91	90	60	60	.
SIAKAGO	71.43	76.19	80.95	95.12	70.13	66.67	71.43	70
MIGWANI	.	84.21	80	80	55	58	70	.
MACHAKOS TOWN	.	75	75	75	78.95	75	70	.
TALA	62
MWENDANTU	63.64	63.64	59.09	70	54.55	54.55	60	.
WOTE	60	60	60	80	.	65	65	.
GARISSA TOWN	66.67	70.59
DARAJA MBILI	52.17	54.55	59.09	59.09	45.45	45.45	.	.
BONDO	97.5	100
KABARNET	60	65	65	70	70	.	.	.
KAPSABET	65.22	65.22	69.57	80.95	68.18	71.43	.	.
KITALE	72.73	63.64	68.18	68.18	68.18	68.18	50	54.55
ELDORET	67.5	70	70	70	75	65	63.64	59.09
TURBO	72.5	65	70	65	67.5	65	60	55
KIPKAREN	63.64	63.64	57.5	60	60	60	45.45	54.55
KAIADO TOWNSHIP	.	.	.	80
BUNGOMA TOWN	59.09	.	63.64	70	72.5	70	70	65
KIMILILI	65	40	.
KAPSOKWONY	75	75	.	.
MUDETE	76.19	80.95	85.71	80.95	76.19	.	.	.
CHEPTULU	76.19	80.95	85.71	85.71	61.9	.	.	.
MBALE	76.19	76.19	85.71	85.71	66.67	.	.	.
KAWANGWARE	90	85.71	90	90.48	90.48	90.91	90.91	90.91
BURMA	80	100	100	81.63	72.73	81	85	85
KIKOMBA	75	80	80	80	66.67	80	80.95	81.665
KANGEMI	85.71	85.71	80	72.725	90	90.48	92.86	90.48
KOROGOCHO	83.33	77.27	80.95	66.67	77.78	81.82	80.95	84.09
KIBERA(TOI)	95.24	90.91	95.24	95.24	90.48	90	85.71	90.48
Average	74.2	76.0	74.7	76.6	71.7	70.7	69.1	74.6

Source: Kenya National Bureau of Statistics

. Data not available

Table 9: Export of Coffee, Tea and Horticultural Produce

Month	COFFEE *		TEA		HORTICULTURE	
	QUANTITY	VALUE	QUANTITY	VALUE	QUANTITY	VALUE
	(MT)	(KSh. Million)	(MT)	KSh. Million	(MT)	KSh. Million
Aug-08	3,094.6	759.0	33,043.3	5,811.1	13,996	3,997
Sep-08	3,348.0	805.0	24,829.6	4,986.1	14,928	3,524
Oct-08	2,774.5	718.2	31,955.8	6,400.4	15,579	3,968
Nov-08	3,421.2	909.6	28,369.5	5,140.0	14,740	4,029
Dec-08	2,680.4	648.2	39,089.5	6,251.1	14,027	4,040
Jan-09	4,096.6	1,013.7	34,946.6	6,138.5	16,272	4,943
Feb-09	4,308.8	1,200.0	27,198.9	5,110.6	16,479	4,529
Mar-09	5,265.0	1,458.3	28,461.7	5,473.3	17,994	4,808
Apr-09	5,964.4	1,529.9	21,372.2	4,238.0	15,197	4,055
May-09	7,252.1	1,832.5	23,390.9	4,484.8	15,619	4,080
Jun-09	6,920.6	1,784.2	27,054.1	5,516.6	15,013	4,187
Jul-09	5,872.4	1,427.9	29,981.7	6,546.5	14,545	3,555
Aug-09	5,427.8	1,355.8	21,598.2	5,003.2	12,771	3,318

Source: Kenya Revenue Authority

- Figures not available

*Unroasted Coffee

Table 10: Monthly Exports of Horticultural Products

Months	CUT FLOWERS				FRUITS				VEGETABLES			
	2008**		2009**		2008**		2009**		2008**		2009**	
	QUANTITY (MT)	VALUE (KSh. Million)	QUANTITY (MT)	VALUE (KSh. Million)	QUANTITY (MT)	VALUE (KSh. Million)	QUANTITY (MT)	VALUE (KSh. Million)	QUANTITY (MT)	VALUE (KSh. Million)	QUANTITY (MT)	VALUE (KSh. Million)
January	8,494.94	5,288.07	7,842.90	3,311.00	533.40	63.05	2,382.74	370.06	7,524.88	1,332.79	6,046.51	1,261.91
February*	10,178.52	6,806.08	8,204.71	2,964.04	1,431.75	111.22	2,624.70	238.52	7,290.64	2,802.23	5,650.04	1,326.09
March	9,116.38	4,836.41	8,360.12	2,867.54	2,476.80	203.31	2,548.68	209.17	7,334.14	1,498.72	7,084.75	1,730.98
April	8,100.43	2,737.35	7,317.02	2,427.45	2,263.94	180.92	2,162.59	156.52	7,604.86	1,338.55	5,717.00	1,470.55
May	8,120.99	2,798.79	7,478.17	2,545.92	1,727.73	130.44	2,217.67	215.20	7,090.86	1,122.58	5,923.03	1,318.69
June	6,785.27	2,173.12	6,306.65	2,297.16	1,718.46	169.36	2,591.75	336.32	6,808.71	1,137.46	6,114.91	1,553.31
July	6,083.05	2,072.24	5,926.35	1,967.40	2,573.05	686.15	2,895.30	308.46	6,605.48	1,123.60	5,723.02	1,279.57
August	6,239.22	2,766.14	5,611.67	1,991.67	1,653.59	199.49	1,852.91	199.86	6,103.07	1,031.84	5,306.68	1,126.89
September	6,994.05	2,246.42			1,031.31	119.54			6,902.52	1,158.22		
October	8,026.54	2,596.09			484.62	56.18			7,068.08	1,315.83		
November	7,909.34	2,773.86			602.77	65.60			6,227.65	1,189.57		
December	7,604.69	2,876.41			626.40	85.97			5,796.13	1,077.50		
Total	93,653.42	39,970.99			17,123.82	2,071.24			82,357.02	16,128.90		

Source: Horticultural Crops Development Authority

- data not available

** Figures subject to revision

Table 11: Kenya's External Trade, Aug 2008 – Aug 2009

KSh million						
MONTH	Domestic Exports	Re-Exports	Total Exports	Total Imports	Volume of Trade	Home use Imports
2008						
August	27,487.90	2,265.53	29,753.42	72,644.67	102,398.09	72,423.12
September	26,618.40	1,869.18	28,487.58	74,773.03	103,260.61	67,656.83
October	29,556.05	2,984.15	32,540.20	74,855.83	107,396.03	75,450.09
November	27,434.29	1,624.36	29,058.65	68,387.90	97,446.55	66,706.10
December	27,405.44	1,938.39	29,343.83	68,567.89	97,911.72	67,312.92
2009						
January	26,120.79	1,238.96	27,359.75	66,177.18	93,536.93	2,707.33
February	27,362.15	1,314.05	28,676.20	60,563.13	89,239.33	60,327.13
March	29,123.55	2,346.16	31,469.71	61,296.80	92,766.51	61,697.58
April	25,206.94	1,141.33	26,348.27	65,799.21	92,147.47	63,773.78
May	24,525.44	1,252.84	25,778.27	58,699.61	84,477.89	58,058.37
June	26,870.74	1,295.50	28,166.23	62,910.79	91,077.02	56,936.72
July	28,362.04	3,171.01	31,533.06	63,738.10	95,271.15	66,681.97
August	24,653.78	3,392.62	28,046.40	59,768.18	87,814.58	58,290.80

Source: Customs Department

*** Provisional**

Table 12: Major Destinations of Domestic Exports, Aug 2008 – Aug 2009

KSh Million											
Month	Uganda	Tanzania	United Kingdom	Pakistan	Netherlands	Egypt	Germany	Rwanda	USA	United Arab Emirates	France
2008											
August	3,031.60	2,402.28	2,934.22	1,264.65	1,650.31	1,483.11	301.43	947.01	2,231.04	416.56	434.38
September	3,170.79	2,493.71	2,961.86	973.01	1,812.64	1,148.08	539.78	729.96	1,911.48	435.57	441.95
October	3,614.23	2,511.91	3,603.99	1,115.82	2,533.31	1,645.78	640.78	917.09	1,654.79	539.40	447.12
November	3,011.92	2,335.70	3,053.52	1,050.66	2,136.05	1,230.38	474.03	545.11	1,883.01	385.11	314.50
December	3,504.30	2,191.03	2,920.00	1,504.05	2,178.31	1,902.93	533.73	581.25	1,779.29	448.55	341.86
2009											
January	3,361.59	2,369.01	2,961.80	2,071.33	2,468.70	916.17	730.97	664.56	1,158.51	482.26	405.98
February	4,032.20	1,841.43	3,172.60	1,265.17	2,527.16	847.16	662.15	692.77	1,742.88	581.83	489.42
March	3,449.74	2,198.30	3,375.02	752.59	2,447.81	1,183.77	547.99	586.57	1,742.15	809.17	476.02
April	3,366.66	2,242.99	2,924.13	953.92	2,001.06	776.69	726.14	619.99	1,249.87	773.67	303.27
May	3,249.01	1,926.56	2,479.75	916.14	1,944.80	740.65	653.81	697.85	1,803.13	479.58	303.17
June	3,050.70	2,418.71	3,070.09	1,206.77	2,147.88	856.25	609.77	676.43	1,594.35	627.36	334.38
July	3,311.21	2,666.84	3,488.47	1,567.72	2,256.30	1,122.25	578.47	814.96	1,408.62	611.95	356.02
August	2,954.15	2,038.83	2,937.74	921.64	1,519.57	930.21	496.98	778.40	1,649.97	784.07	359.18

Source: Customs Department

Table 13: Major Origins of Imports, July 2008 – July 2009

KSh Million											
Month	United Arab Emirates	United Kingdom	South africa	Saudi Arabia	Japan	India	USA	Germany	Netherlands	France	China
2008											
August	6,507.93	2,568.88	3,314.31	2,488.28	4,062.72	10,098.94	1,876.34	2,707.15	1,545.58	1,007.23	4,869.16
September	12,326.45	1,873.49	3,641.87	4,813.22	3,605.69	8,705.56	2,108.17	3,166.97	935.69	1,385.47	5,399.50
October	7,753.46	3,853.50	4,723.11	1,414.43	3,677.07	7,769.47	2,538.19	2,402.06	921.52	1,470.71	6,774.62
November	5,247.67	2,601.72	7,604.02	996.78	3,517.57	9,794.27	2,183.26	2,651.44	1,781.43	1,655.30	7,194.15
December	6,637.34	3,015.16	3,829.78	3,147.95	4,773.55	6,200.32	1,739.14	2,519.94	1,349.98	2,548.16	7,327.06
2009											
January	3,314.77	2,370.63	4,112.81	1,966.25	4,521.63	6,572.44	8,392.77	2,255.11	1,962.77	1,530.99	5,802.14
February	5,641.51	2,059.46	4,738.94	2,806.33	2,265.48	5,370.46	2,125.21	1,553.16	2,826.51	1,566.75	6,344.45
March	5,790.29	2,363.74	8,614.62	1,473.44	3,076.06	5,663.38	4,230.35	2,198.25	1,826.88	1,791.77	5,493.90
April	2,643.10	3,980.97	6,091.41	2,240.58	3,551.89	8,341.77	4,045.56	1,700.95	2,107.65	1,595.81	7,017.61
May	3,406.21	2,088.03	5,313.96	2,857.00	4,694.47	5,937.40	3,862.26	1,550.39	986.32	990.15	4,650.28
June	9,904.70	566.67	6,582.05	1,934.44	3,766.78	6,853.21	2,147.36	1,683.50	759.11	1,038.13	6,087.92
July	6,394.50	4,880.77	8,634.42	1,233.76	3,673.80	4,957.91	3,412.89	1,813.99	1,704.13	971.00	6,658.65
August	9,425.66	3,141.20	4,108.42	1,359.19	4,234.83	7,725.50	1,839.25	2,018.61	1,573.92	1,540.61	5,344.98

Source: Customs Department

Table 12 (a): Domestic Exports by Broad Economic Category

Million KSh

DESCRIPTION	2007	2008						2009							
	Total	August	September	October	November	December	Total	January	February	March	April	May	Jun	July	August
FOOD AND BEVERAGES	105,765	10,468	9,804	11,967	10,732	11,103	129,916	11,440	10,534	11,986	10,534	10,573	9,507	10,414	10491.8
INDUSTRIAL SUPPLIES (Non-Food) ..	66,441	10,001	8,904	8,833	8,429	7,332	92,204	6,688	8,272	8,076	6,696	6,323	7,144	7,367	7064.3
FUEL AND LUBRICANTS	9,346	45	423	468	523	607	5,949	386	319	277	172	295	355	367	236.3
MACHINERY & OTHER CAPITAL EQUIPMENT ..	4,427	323	316	473	300	729	5,546	588	351	539	701	599	745	572	451.4
TRANSPORT EQUIPMENT	3,472	260	264	300	406	304	3,657	317	537	505	704	371	298	398	351.7
CONSUMER GOODS NOT ELSEWHERE SPECIFIED ..	72,161	6,387	6,904	7,513	7,041	7,323	85,724	6,701	7,347	7,723	6,399	6,365	6,837	7,302	6055.6
GOODS NOT ELSEWHERE SPECIFIED ..	7	4	3	2	3	7	32	1	2	18	1	0	1,985	1,941	2.6
TOTAL	261,619	27,488	26,618	29,556	27,434	27,405	323,029	26,121	27,362	29,124	25,207	24,525	26,871	28,362	24,654
PERCENTAGE SHARES:															
Food and Beverages	40.43	38.08	36.83	40.49	39.12	40.51	40.22	43.80	38.50	41.16	41.79	43.11	35.38	36.72	42.56
Industrial Supplies (Non-Food)	25.40	36.38	33.45	29.89	30.73	26.75	28.54	25.60	30.23	27.73	26.56	25.78	26.59	25.98	28.65
Fuel and Lubricants	3.57	0.16	1.59	1.58	1.91	2.21	1.84	1.48	1.17	0.95	0.68	1.20	1.32	1.30	0.96
Machinery and other Capital Equipment ..	1.69	1.18	1.19	1.60	1.09	2.66	1.72	2.25	1.28	1.85	2.78	2.44	2.77	2.02	1.83
Transport Equipment	1.33	0.95	0.99	1.02	1.48	1.11	1.13	1.21	1.96	1.73	2.79	1.51	1.11	1.40	1.43
Consumer Goods not elsewhere specified	27.58	23.24	25.94	25.42	25.67	26.72	26.54	25.65	26.85	26.52	25.39	25.95	25.44	25.75	24.56
Goods not elsewhere specified	0.00	0.01	0.01	0.01	0.01	0.03	0.01	0.00	0.01	0.06	0.00	0.00	7.39	6.84	0.01
TOTAL	100	100	100	100	100	100	100	100	100	100	100	100	100	100	100

Source: Annual Trade Report - Customs & Excise Dept.

* Provisional

Table 13 (a): Imports by Broad Economic Category

Million KSh

DESCRIPTION	2007	2008						2009							
	Total	August	Sept	Oct	Nov	Dec	Total	January	February	March	April	May	Jun	Jul	Aug
FOOD AND BEVERAGES	42,483.1	3,393.0	4,125.0	6,822.0	9,198.0	5,005.0	53,409.4	4,342.0	3,980.0	8,649.0	8,897.0	8,606.8	7,111.0	6,386.3	6,598.3
INDUSTRIAL SUPPLIES (Non-Food) ..	193,819.3	20,072.0	21,890.8	25,880.0	23,454.0	20,522.0	237,249.7	21,518.0	15,694.9	19,422.0	17,858.0	18,456.5	18,433.2	19,026.1	18,521.6
FUEL AND LUBRICANTS	126,911.2	23,492.0	23,862.3	17,980.0	11,433.0	11,423.0	205,859.5	10,104.0	11,012.5	9,890.0	14,352.0	11,377.8	15,496.3	11,691.2	12,982.6
MACHINERY & OTHER CAPITAL EQUIPMENT ..	97,336.5	9,434.0	13,646.9	10,559.0	11,112.0	18,743.0	127,118.9	11,035.0	12,177.0	10,300.0	11,234.0	10,425.9	9,977.9	11,496.2	10,903.9
TRANSPORT EQUIPMENT	97,427.0	11,963.0	4,487.0	8,263.0	7,855.0	7,812.0	86,574.9	13,396.0	9,339.6	7,613.0	8,646.0	5,946.2	7,251.2	8,421.1	6,642.1
CONSUMER GOODS NOT ELSEWHERE SPECIFIED ..	44,883.8	4,078.0	4,688.4	5,273.0	5,309.0	4,899.0	53,464.3	5,731.0	5,352.0	4,975.0	4,811.0	3,686.9	4,466.8	4,332.3	4,111.2
GOODS NOT ELSEWHERE SPECIFIED ..	2,259.7	213.0	207.0	79.0	27.0	164.0	903.4	51.0	3,007.1	448.0	1.0	199.6	174.4	2,384.8	8.5
TOTAL	605,120.6	72,645	74,773	74,856	68,388	68,568	764,580.2	66,177.0	60,563.0	61,297.0	65,799.0	58,699.6	62,910.8	63,738.1	59,768.2
PERCENTAGE SHARES:															
Food and Beverages	7.02	4.67	5.52	9.11	13.45	7.30	6.99	6.56	6.57	14.11	13.52	14.66	11.30	10.02	11.04
Industrial Supplies (Non-Food)	32.03	27.63	29.28	34.57	34.30	29.93	31.03	32.52	25.91	31.69	27.14	31.44	29.30	29.85	30.99
Fuel and Lubricants	20.97	32.34	31.91	24.02	16.72	16.66	26.92	15.27	18.18	16.13	21.81	19.38	24.63	18.34	21.72
Machinery and other Capital Equipment ..	16.09	12.99	18.25	14.11	16.25	27.33	16.63	16.67	20.11	16.80	17.07	17.76	15.86	18.04	18.24
Transport Equipment	16.10	16.47	6.00	11.04	11.49	11.39	11.32	20.24	15.42	12.42	13.14	10.13	11.53	13.21	11.11
Consumer Goods not elsewhere specified	7.42	5.61	6.27	7.04	7.76	7.14	6.99	8.66	8.84	8.12	7.31	6.28	7.10	6.80	6.88
Goods not elsewhere specified	0.37	0.29	0.28	0.11	0.04	0.24	0.12	0.08	4.97	0.73	0.00	0.34	0.28	3.74	0.01
TOTAL	100.00	100.00	97.50	100.00	100.00	100.00	100.00	100.00	100.00	100.00	100.00	100.00	100.00	100.00	100.00

Source: Annual Trade Report - Customs & Excise Dept.

* Provisional

Table 14(a): Local Electricity Generation by Source

MONTH	HYDRO	GEO - THERMAL	THERMAL	TOTAL
Aug-08	269.21	80.39	132.15	481.75
Sep-08	257.53	78.51	121.65	457.69
Oct-08	268.32	85.26	122.15	475.73
Nov-08	262.30	85.44	113.45	461.18
Dec-08	252.08	106.72	112.42	471.22
Jan-09	231.75	116.58	127.48	475.81
Feb-09	215.16	99.77	113.16	428.09
Mar-09	237.11	106.07	129.83	473.01
Apr-09	202.51	112.73	128.07	443.31
May-09	212.16	107.77	135.56	455.49
Jun-09	189.95	111.41	139.69	441.05
July 09*	189.17	118.13	144.99	452.30
Aug 09*	192.33	128.19	158.48	479.00

Source: KPL&C

* Provisional

Fig 9: Electricity Generation by Source

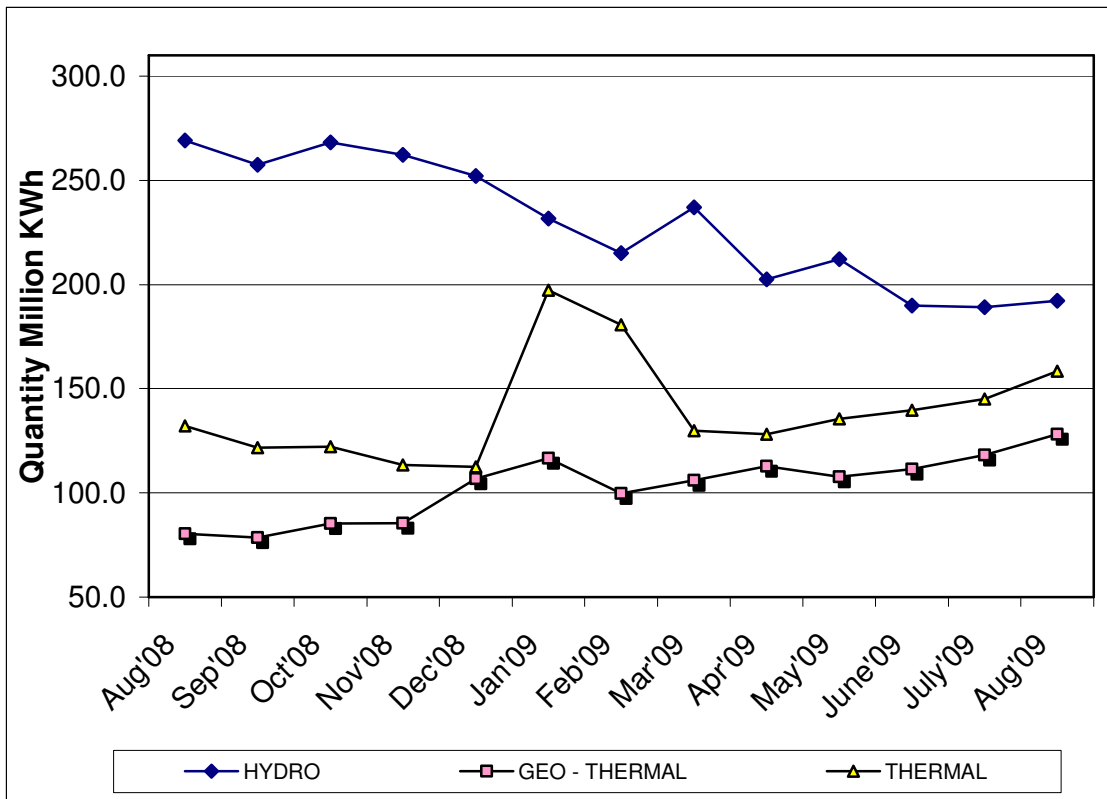


Table 14(b): Generation and Consumption of Electricity

Month	GENERATION					CONSUMPTION**					
	LOCAL GENERATION	IMPORTS			EPPS (Aggreko)	TOTAL GENERATION	TOTAL KPLC SALES	RURAL ELECTRIFICATIO N	EXPORTS TO UGANDA	TOTAL DOMESTIC CONSUMPTION	POWER LOSSES
		UGANDA	TANZANIA	Total Imports							
2008*											
August	481.8	1.7	0.11	1.8	77.6	561.1	448.1	19.1	2.14	467.2	-91.8
September	457.7	2.1	0.10	2.2	75.5	535.4	427.8	19.0	2.27	446.8	-86.4
October	475.7	2.3	0.11	2.4	75.5	553.7	423.9	18.9	3.07	442.8	-107.8
November	461.2	3.0	0.10	3.1	75.5	539.9	429.3	20.3	3.05	449.6	-87.2
December	471.2	2.6	0.10	2.7	62.3	536.2	404.8	17.6	2.31	422.3	-111.6
2009											
January	475.8	2.6	0.09	2.7	69.8	548.3	432.1	20.6	2.20	452.7	-93.4
February	478.1	1.7	0.08	1.8	67.6	547.4	418.0	19.8	2.63	437.8	-107.0
March	473.0	1.9	0.09	2.0	75.2	550.2	394.7	19.4	2.41	414.1	-133.7
April	475.7	1.1	0.10	1.2	77.8	554.7	417.9	19.8	2.11	437.7	-114.9
May	455.5	1.6	0.11	1.7	89.2	546.5	417.9	20.5	2.40	438.4	-105.7
June	441.1	1.7	0.11	1.8	85.8	528.7	417.9	21.2	2.46	439.1	-87.1
July	452.3	1.8	0.12	1.9	97.3	551.6	417.9	21.5	2.49	439.4	-109.7
August	479.0	1.7	0.11	1.8	100.8	581.6	417.9	21.4	2.44	439.3	-139.9

NB: Difference between amount purchased from KENGEN and imported from Uganda and consumption reflect transmission, distribution and commercial losses

*Provisional

Fig 10: Electricity Generation Consumption and Power Losses

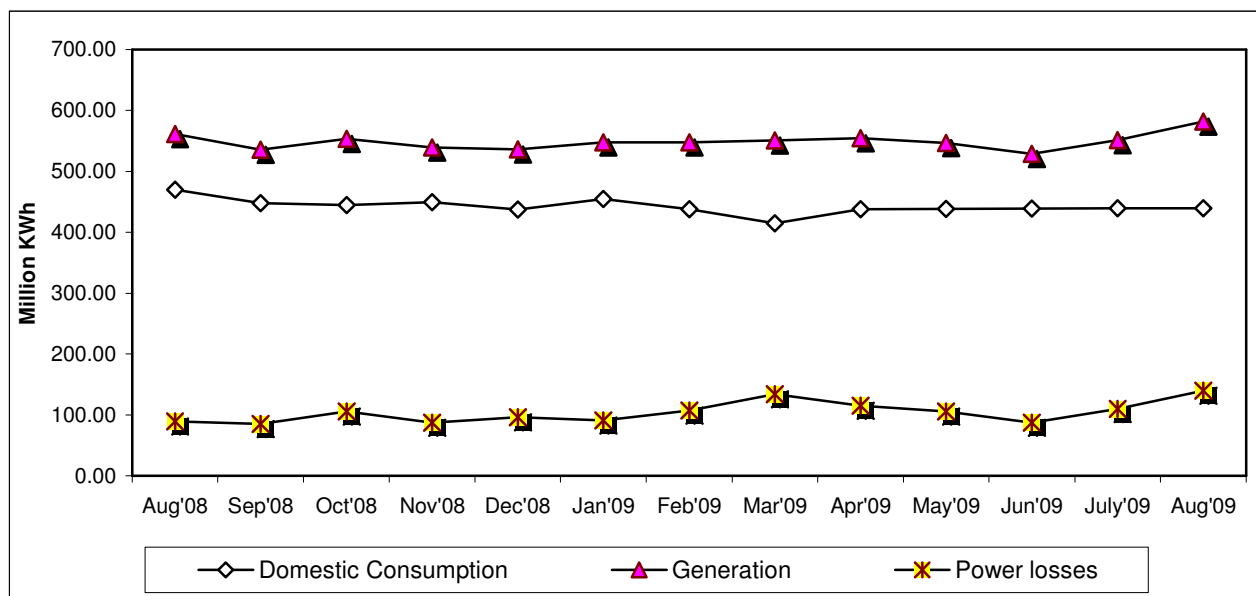


Table 14 (c): Consumption of Petroleum Fuels

PERIOD									'000 MT
	LIGHT DIESEL OIL	JET FUEL	FUEL OILS	MOTOR SPIRIT	ILLUMINATING KEROSENE	HEAVY DIESEL OIL	L.P.G.	AVIATION GASLENE	TOTAL FUELS
June	85.5	40.2	42.8	26.1	19.8	1.9	5.1	0.11	221.6
July	95.6	46.9	38.4	30.5	22.0	2.1	21.7	0.46	257.6
August	104.0	49.5	57.1	27.5	20.7	2.3	5.1	0.17	266.5
September	79.4	48.2	42.4	29.4	15.2	2.1	5.3	0.17	222.1
October	76.9	47.8	42.8	27.4	17.8	2.0	6.5	0.19	221.4
November	92.7	45.1	42.3	28.7	19.2	2.2	5.2	0.11	235.5
December	94.5	46.6	58.6	33.8	26.2	3.7	4.5	0.14	268.1
2009									
JANUARY	107.6	48.7	35.9	30.0	22.0	1.4	4.8	0.12	250.6
FEBRUARY	90.4	40.8	40.6	29.3	20.5	1.6	5.2	0.08	228.5
MARCH	91.8	48.5	41.0	36.1	23.6	1.8	4.5	0.19	247.5
APRIL	101.8	43.6	35.0	34.8	28.7	1.1	4.0	0.16	249.1
MAY	87.9	44.0	32.1	31.7	24.1	1.5	5.6	0.11	227.0
JUNE	92.3	46.8	37.9	33.5	25.4	1.9	4.4	0.13	242.3

Source : Ministry of Energy

* Sales from major oil marketing firms only

Table 14 (d): Weighted Average Retail Prices for Selected Fuel Products within Nairobi

PERIOD	KSh per litre			
	MOTOR GASOLINE PREMIUM	MOTOR GASOLINE REGULAR	LIGHT DIESEL OIL (GASOIL)	ILLUMINATING KEROSENE
Sep-08	104.56	101.02	101.48	88.07
Oct-08	100.36	98.16	97.73	85.56
Nov-08	94.83	93.27	86.94	82.61
Dec-08	83.53	77.07	72.19	67.47
Jan-09	84.52	81.73	75.57	68.00
Feb-09	81.69	80.60	73.94	65.94
Mar-09	80.64	79.41	72.59	63.26
Apr-09	79.79	77.62	70.11	60.25
May-09	77.88	76.23	66.11	58.27
Jun-09	78.94	77.48	67.26	57.99
Jul-09	81.22	78.43	72.19	59.57
Aug-09	81.70	79.73	72.52	59.58
Sep-09	81.64	78.90	72.13	60.00*
Oct-09	82.40	79.32	72.86	61.00*

Source : Kenya National Bureau of Statistics

* Provisional

Fig 11(a): Average Retail Prices of selected Petroleum Products

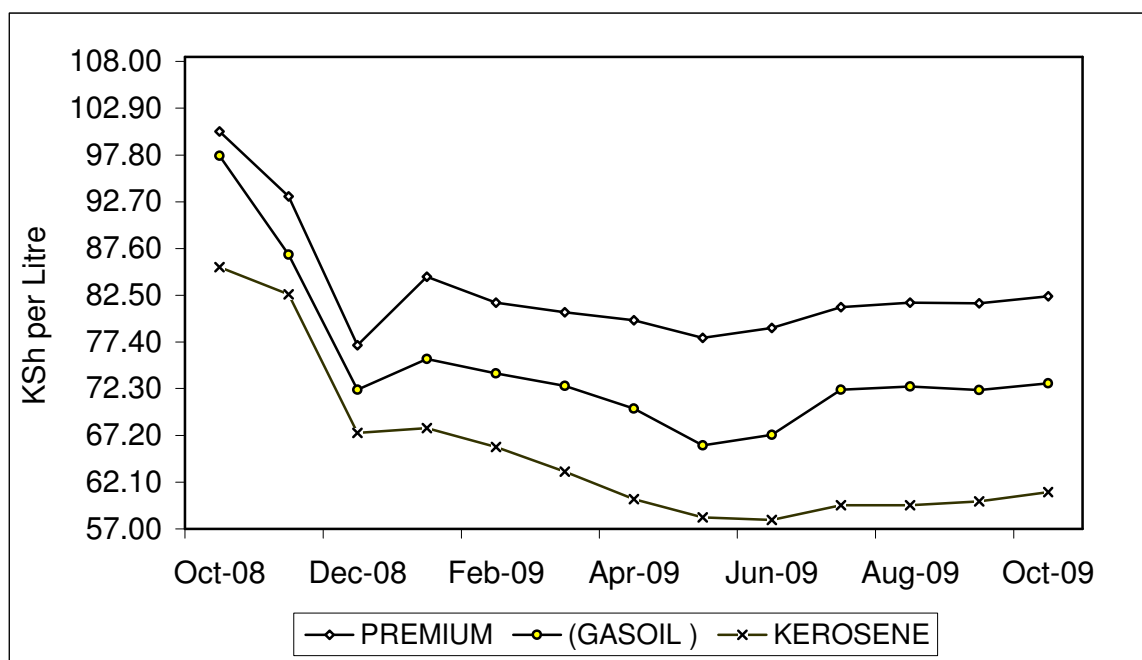


Table 14 (e): Weighted Average Retail Prices for Selected Fuels in Kenya

PERIOD	MOTOR GASOLINE PREMIUM (KSh Per Litre)	MOTOR GASOLINE REGULAR (KSh per Litre)	LIGHT DIESEL OIL, GASOIL (KSh per Litre)	ILLUMINATING KEROSENE (KSh per Litre)	L.P.G (KSh per 13Kg)	Charcoal (KSh per 4 Kg Tin)
Oct-08	102.12	101.09	98.09	82.61	1,827.09	36.95
Nov-08	98.12	96.07	90.62	81.11	1,827.09	37.45
Dec-08	86.16	83.61	77.54	71.10	1,845.46	37.56
Jan-09	84.52	81.73	75.57	68.00	1,681.74	39.72
Feb-09	81.69	80.60	73.94	65.94	1,705.00	41.02
Mar-09	80.64	79.41	72.59	63.26	1,652.00	39.70
Apr-09	79.79	77.62	70.11	60.25	1,617.00	38.10
May-09	77.88	76.23	66.11	58.27	1,606.00	38.11
Jun-09	78.94	77.48	67.26	57.99	1,601.00	38.12
Jul-09	80.23	79.89	69.58	60.19	1,597.00	38.18
Aug-09	80.30	79.47	68.77	59.75	1,597.00	38.21
Sep-09	79.47	80.26	68.71	59.73	1,911.00	37.03
Oct-09	80.96	81.45	70.03	60.66	1,902.00	36.76

Source : Kenya National Bureau of Statistics
 - data not available

Fig 11(b): Weighted Average Prices for LPG in Kenya

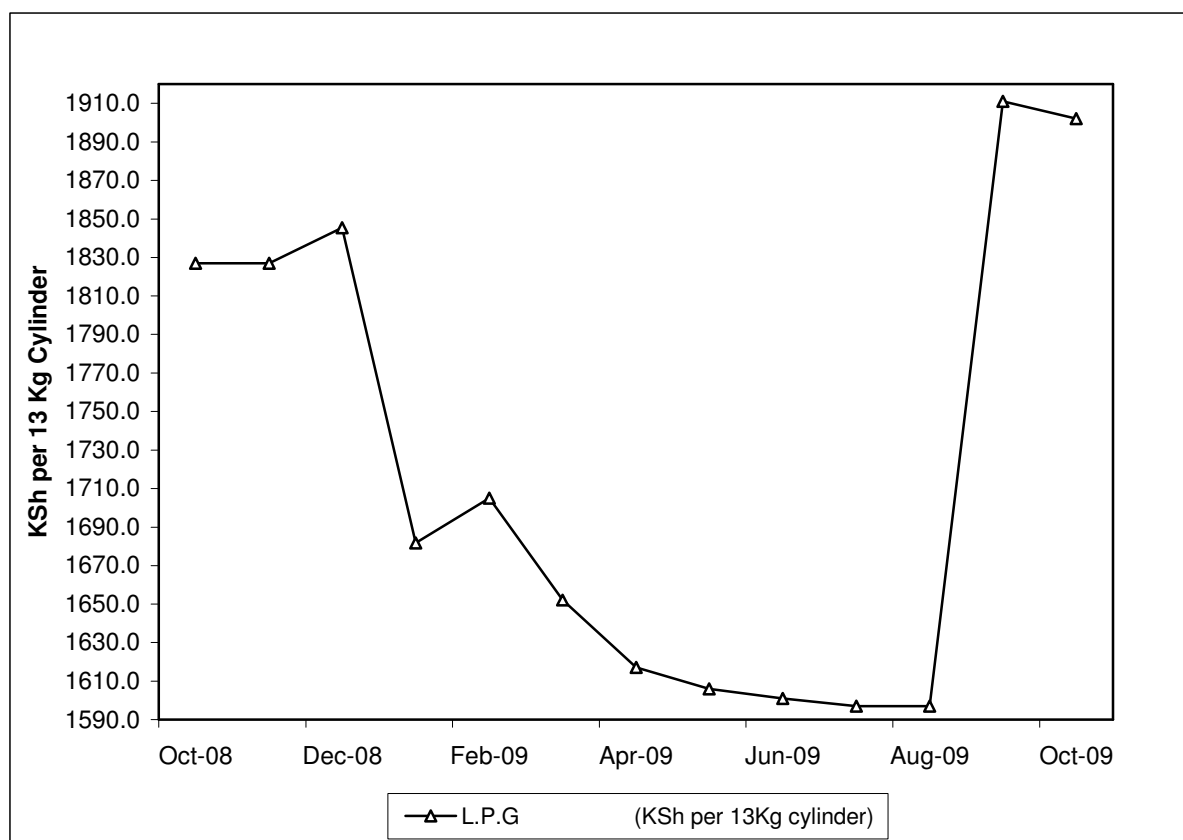


Table 14(f): Murban ADNOC Prices 2003-2008

Month/Year	US\$BBL					
	2004	2005	2006	2007	2008	2009*
January	31.05	42.10	62.15	54.85	92.25	48.85
February	30.90	44.00	60.95	58.75	95.10	44.95
March	33.15	50.95	60.85	62.10	102.20	47.55
April	33.80	52.55	67.50	67.60	109.35	45.85
May	37.05	49.80	68.50	68.40	125.75	60.15
June	35.95	55.45	68.85	69.70	134.00	71.65
July	37.35	57.10	73.00	73.70	137.35	66.95
August	41.55	60.95	72.70	71.75	117.50	72.75
September	41.39	61.05	63.25	78.55	98.05	69.10
October	42.80	58.00	59.35	81.80	69.25	
November	39.65	54.95	59.70	91.75	51.40	
December	38.50	56.90	62.05	90.60	42.10	

Source : Ministry of Energy

ADNOC : Abu Dhabi National Oil Corporation

PRICE : Abu Dhabi Free On Board (FOB)

US\$/ BBL: US Dollar per Barrel

Fig 12: Trend for Murban ADNOC Crude Oil Prices

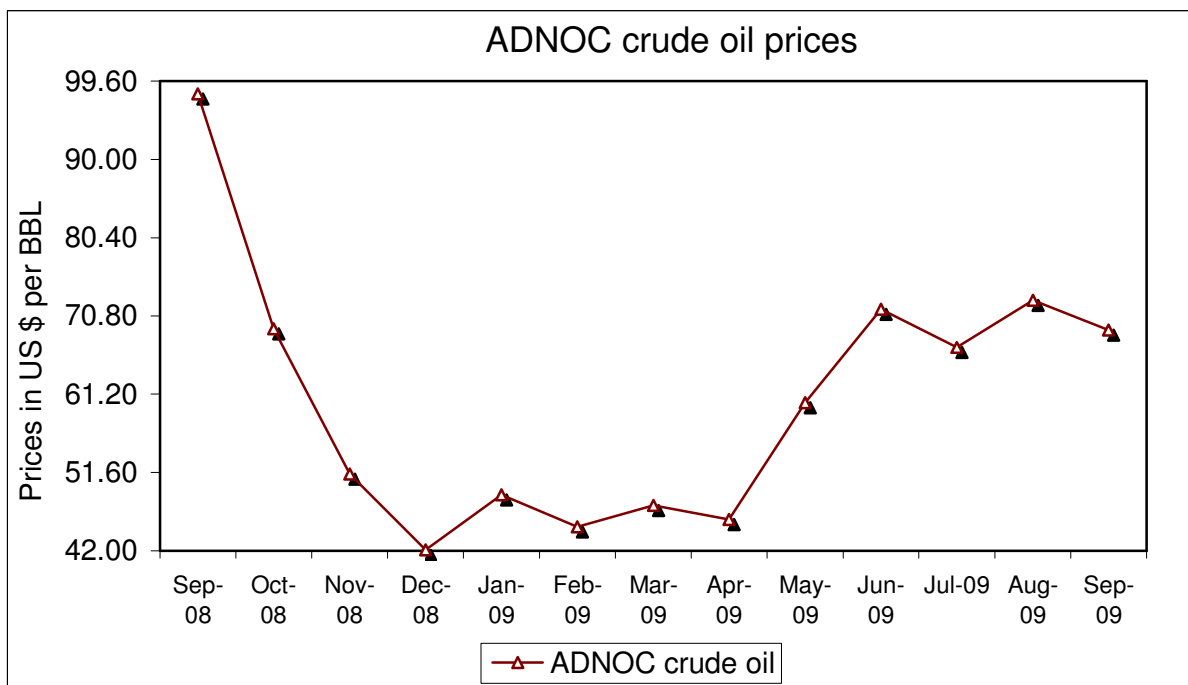


Table 15: Value of Building Plans Approved by Nairobi City Council (NCC)

KSh.'Million

MONTHS	ACTUAL			REAL**		
	RESIDENTIAL	NON RESIDENTIAL	AGGREGATE ACTUAL	RESIDENTIAL	NON RESIDENTIAL	REAL AGGREGATE
2008						
August	1,961.3	1,621.5	3,582.8	36.5	29.1	65.5
September	2,144.5	1,589.7	3,734.2	39.9	28.5	68.4
October	2,729.1	1,737.1	4,466.3	50.3	30.9	81.2
November	5,514.5	1,729.2	7,243.7	101.7	31.0	132.7
December	1,976.1	2,954.8	4,930.9	36.5	52.6	89.0
2009						
January	2,356.8	5,717.5	8,074.3	43.5	101.7	145.2
February	3,686.1	2,272.9	5,959.0	68.0	40.4	108.4
March	3,960.2	2,592.6	6,552.8	73.1	46.1	119.2
April	4,020.0	2,774.3	6,794.2	73.7	48.3	122.0
May	4,226.2	2,708.9	6,935.1	77.5	47.2	124.7
June	4,700.2	2,871.7	7,571.9	86.2	50.0	136.2
July	3,956.3	11,648.8	15,605.1	72.6	202.8	275.4
August	5,927.4	9,624.5	15,551.9	108.7	167.5	276.3

Source: Nairobi City Council

Table 16(a): Domestic Production of Sugar

Month	Metric Tonnes							
	2002	2003	2004	2005	2006	2007	2,008	2009*
January	48,300	37,923	49,186	48,993	47,596	42,188	38,986	53,968
February	39,479	39,709	48,708	41,929	44,823	41,246	49,772	46,115
March	39,479	22,881	46,827	40,192	51,327	45,933	40,753	53,687
April	41,105	17,879	43,123	42,988	41,055	47,255	38,968	46,164
May	18,744	34,954	37,583	40,869	39,849	45,427	50,865	46,002
June	44,581	39,144	28,069	29,076	34,985	36,870	49,300	47,410
July	50,184	31,878	36,824	27,995	30,985	37,496	40,805	33,078
August	45,895	40,106	41,622	41,585	47,002	44,898	21,130	
September	48,752	48,302	45,438	39,003	35,173	44,396	40,567	
October	44,573	48,939	45,530	45,810	35,102	48,849	47,244	
November	35,609	43,037	45,107	42,493	34,265	44,155	46,239	
December	37,923	43,768	48,738	48,069	33,509	41,691	47,262	
Total	494,624	448,520	516,755	489,002	475,671	520,404	511,891	

*Provisional

** Revised based on Kenya Sugar Board figures.

Source: Kenya Sugar Authority

TABLE 16(b): PRODUCTION OF SOFT DRINKS

000' Litres

Month	2002	2003	2004	2005	2006*	2007*	2008*	2009*
January	38,553	51,676	17,162	22,025	32,548	28,835	26,199	31,153
February	18,547	19,540	12,692	22,895	26,470	27,484	24,352	26,891
March	17,558	17,353	17,650	27,395	27,538	31,120	31,961	34,847
April	14,096	15,970	10,596	18,196	19,542	26,411	23,810	32,585
May	11,698	13,514	12,509	17,308	20,406	26,148	25,419	26,934
June	13,917	15,109	19,776	18,513	22,682	22,852	22,727	26,552
July	6,947	6,266	13,828	19,044	17,568	20,508	21,670	26,228
August	10,486	10,784	12,722	15,367	20,095	21,402	23,766	31,113
September	7,842	6,709	18,768	19,950	20,127	25,899	29,530	
October	9,980	9,102	13,863	21,965	23,774	40,067	26,953	
November	12,354	11,977	11,813	26,881	20,689	27,177	31,923	
December	20,521	22,989	14,542	27,485	27,968	30,329	53,226	
Total	182,499	200,989	175,921	257,024	279,407	328,231	341,536	

Source : Kenya National Bureau of Statistics

*Provisional

Table 16(c): Production of Assembled Vehicles

Month	Numbers			
	2,006	2007	2008	2009*
January	360	450	468	379
February	411	516	592	556
March	461	565	388	517
April	436	532	601	494
May	486	574	575	518
June	399	481	487	540
July	439	456	468	493
August	480	589	440	484
September	477	566	488	
October	447	718	503	
November	592	658	435	
December	392	437	302	
Total	5,380	6,542	5,747	

*Provisional

TABLE 16(d): PRODUCTION OF GALVANISED SHEETS

Month	Metric Tonnes			
	2006	2007	2008	2009*
January	13,520	13,515	16,240	16,031
February	12,765	15,365	16,912	12,003
March	12,736	16,920	15,498	13,104
April	13,138	15,855	15,396	14,376
May	13,754	14,816	15,741	16,046
June	13,946	16,404	15,528	16,225
July	15,695	15,674	16,935	17,497
August	15,180	15,921	17,166	17,253
September	13,927	15,877	17,255	
October	13,619	16,611	15,755	
November	15,552	15,372	12,418	
December	14,914	15,930	14,477	
Total	168,746	188,260	189,321	

Source : Kenya National Bureau of Statistics

- data not available

*Provisional

Table 16(e): Cement production and Consumption

MONTHS	Metric Tonnes					
	2007		2008		2009*	
	PRODUCTION	CONSUMPTION	PRODUCTION	CONSUMPTION	PRODUCTION	CONSUMPTION
January	196,464	135,327	178,681	133,429	247,984	200,840
February	178,706	130,918	186,508	152,133	246,746	199,701
March	215,477	164,619	213,740	175,922	270,242	191,989
April	198,779	162,976	211,728	173,832	256,389	202,344
May	214,333	178,679	254,809	200,639	275,599	217,505
June	198,002	163,622	244,128	194,627	258,793	204,242
July	236,597	190,706	267,072	203,298	248,340	200,840
August	235,786	191,609	266,905	214,606	243,162	209,593
September	235,088	191,373	258,139	207,702	206,870	206,333
October	206,289	191,244	260,258	183,199		
November	221,484	199,745	234,080	191,603		
December	208,656	160,582	252,751	174,799		
TOTAL	2,545,660	2,061,400	2,828,799	2,205,789		

- data not available

Source: Kenya National Bureau of Statistics

*Provisional

-: data not available

Table 16(f): Milk Intakes in the Formal Milk Sector

	litres			
Month	2006	2007	2008	2009
Jan	28,993,210	35,997,997	28,596,999	35,816,607
Feb	25,445,275	37,508,095	26,527,462	29,345,350
Mar	21,142,657	34,608,329	26,885,445	26,490,299
Apr	23,285,252	33,286,207	28,616,588	24,948,210
May	29,773,451	30,038,560	35,017,737	29,158,098
Jun	34,032,057	33,092,547	34,723,007	33,355,950
Jul	33,304,057	33,147,783	32,838,238	33,879,786
Aug	32,658,519	36,022,269	33,643,233	35,013,248
Sept	32,159,974	35,186,438	35,535,725	
Oct	32,236,110	37,988,733	35,530,367	
Nov	33,925,921	39,840,842	39,359,859	
Dec	33,192,254	36,393,069	41,236,728	
Total	360,148,736	423,110,869	398,511,387	

Source: Kenya Dairy Board

FIG 13: Milk Intake in the Formal Sector

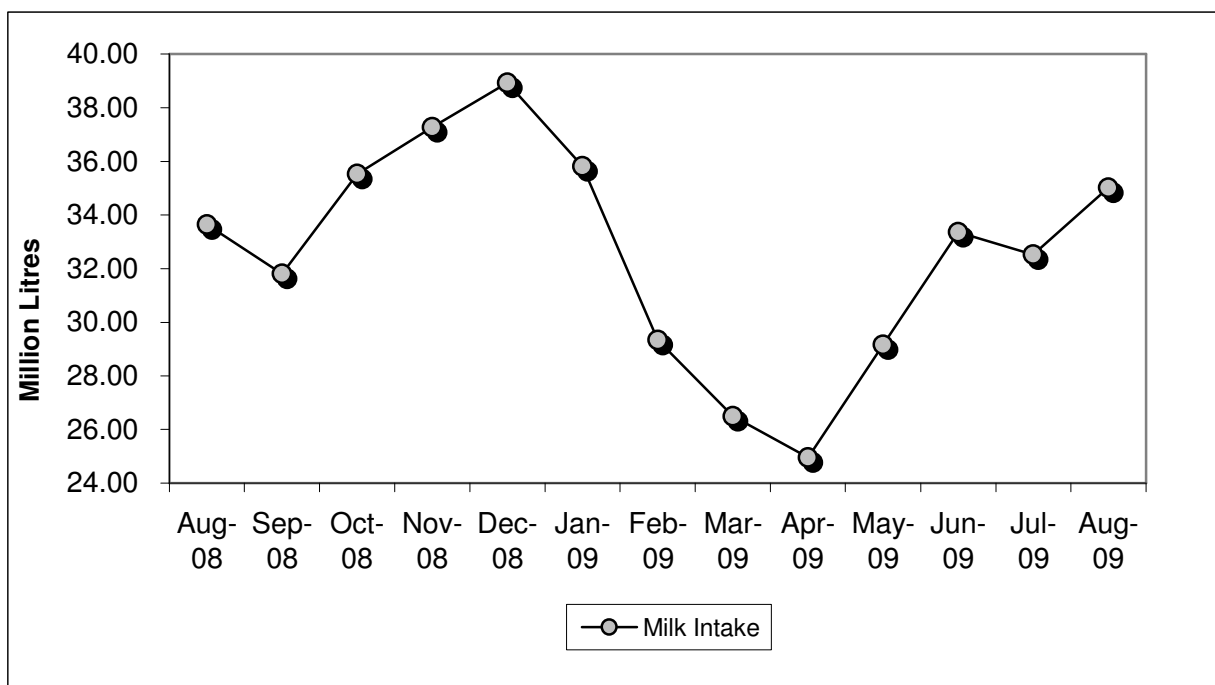


Table 17: Visitor Arrivals* through Jomo Kenyatta International Airport (J.K.I.A) and Moi International Airport (M.I.A)

MONTH	AIRPORT		Numbers
	JKIA	MIA	Visitors to Kenya
Aug-08	62,890	13,081	75,971
Sep-08	56,026	11,136	67,162
Oct-08	58,504	11,260	69,764
Nov-08	50,224	15,369	65,593
Dec-08	72,657	22,398	95,055
Total 2008	610,378	111,188	721,566
Jan-09	54,167	24,315	78,482
Feb-09	54,503	24,542	79,045
Mar-09	52,320	18,866	71,186
Apr-09	52,458	7,026	59,484
May-09	50,941	4,181	55,122
Jun-09	61,946	7,113	69,059
Jul-09	83,972	13,689	97,661
Aug-09	82,658	17,656	100,314
Sep-09	63,288	12,734	76,022

* Visitors arrivals exclude Kenyans

**Provisional

FIG 14: VISITORS ARRIVING IN KENYA THROUGH THE MAIN AIRPORTS

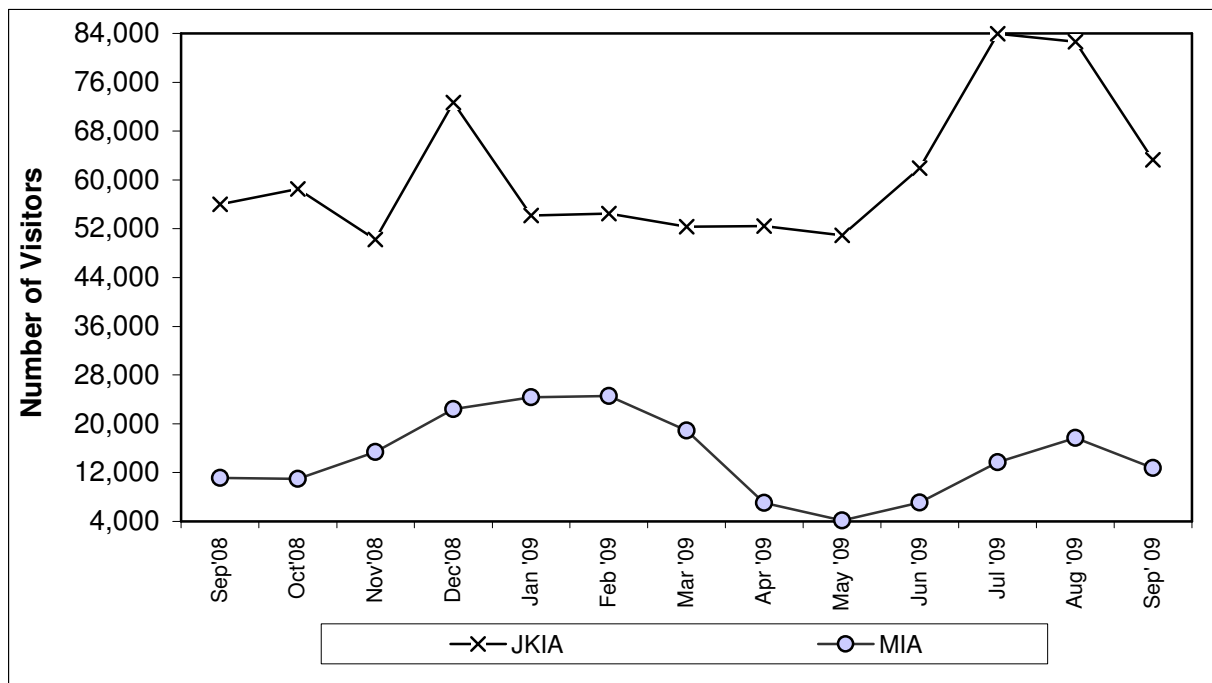


TABLE (18A): JOMO KENYATTA INT. AIRPORT INTERNATIONAL FLIGHTS ONLY- EMBARKED PASSENGERS BY PORT OF DESTINATION.

PORTS.	2007	2008					2009								
	TOTAL	Sep	Oct	Nov	Dec	TOTAL	Jan	Feb	Mar	Apr	May	Jun	Jul	Aug	Sep
ADDIS ABABA (ADD)	45,260	728	3,297	3,739	2,277	26,060	3,759	3,975	915	1,056	656	3,710	1,061	1,963	1,196
CAIRO (CAI)	26,195	2,897	2,812	2,628	3,304	28,883	902	1,367	2,677	2,086	2,351	1,902	1,194	4,184	2,716
DAR ES SALAAM (DAR)	82,939	7,244	5,555	6,655	3,704	71,240	5,278	5,667	5,870	9,027	7,514	9,797	7,997	9,745	10,286
ENTEBBE (EBB)	119,541	10,456	10,401	10,802	9,873	122,120	9,143	8,967	9,630	9,458	9,963	1,740	10,749	10,163	9,660
HARARE (HRE)	16,880	1,234	1,218	1,475	1,996	15,997	1,223	1,148	1,436	1,926	867	1,215	1,240	1,386	1,011
JOHANNESBURG (JNB)	116,178	6,743	10,823	14,430	12,135	105,218	8,672	6,645	6,384	11,287	2,521	3,618	7,152	11,083	6,823
TOTAL AFRICA	406,993	29,302	34,106	39,729	33,289	369,518	28,977	27,769	26,912	34,840	23,872	21,982	29,393	38,524	31,692
BOMBAY (BOM)	73,691	4,486	9,680	1,296	7,284	57,657	1,019	4,821	4,476	4,087	4,810	4,568	5,097	4,989	4,165
DUBAI (DXB)	122,115	17,050	7,376	16,917	16,022	183,322	13,866	5,729	13,116	12,639	12,768	10,158	18,446	23,973	17,137
JEDAH (JED)	8,130	1,429	0	472	0	6,315	0	256	264	450	493	322	368	123	241
KARACHI (KHI)	0	0	0	0	0	0	0	0	0	0	0	0	0	0	0
MUSCAT (MCT)	0	0	0	0	0	0	0	0	0	0	0	0	0	0	0
OTHERS															
TOTAL ASIA	203,936	22,965	17,056	18,685	23,306	247,294	14,885	10,806	17,856	17,176	18,071	15,048	23,911	29,085	21,543
AMSTERDAM (AMS)	176,803	17,641	16,243	15,802	3,883	112,445	3,950	2,357	3,832	4,353	2,851	12,591	6,118	7,894	5,186
BRUSSELS (BRU)	29,563	1,830	1,825	2,092	2,437	23,401	1,345	1,003	0	1,720	3,122	3,172			
LONDON (LON)	195,780	20,474	18,237	15,037	16,001	173,710	14,002	7,252	11,057	8,175	11,690	13,803	17,528	20,658	16,802
PARIS-(CDG) & (PAR)	19,034	2,657	1,877	1,967	2,009	18,255	1,248	565	2,299	1,901	973	4,387	2,832	4,912	2,898
ROME (ROM) ^z	-	0	0	0	0	-	0	0	0	0	0	0	0	0	0
ZURICH (ZRH)	27,288	0	2,408	2,054	2,137	26,289	3,695	3,558	0	2,616	3,462	3,833	1,379	1,034	924
TOTAL EUROPE	448,468	42,602	40,590	36,952	26,467	354,100	24,240	14,735	17,188	18,765	22,098	37,786	27,857	34,498	25,810
TOTAL OTHERS**	428,639	44,102	40,382	42,050	32,073	497,902	28,960	32,450	40,715	37,122	26,736	35,891	45,226	44,175	40,890
GRAND TOTAL	1,488,177	138,971	132,134	137,416	115,135	1,468,814	97,062	85,760	102,671	107,903	90,777	110,707	126,387	146,282	119,935

Source : Kenya National Bureau of Statistics

- no passengers embarked

* Provisional

** Ports not listed

z All planes flying to Italy

FIG 15: J.K.I.A. PASSENGERS BY REGION OF DESTINATION

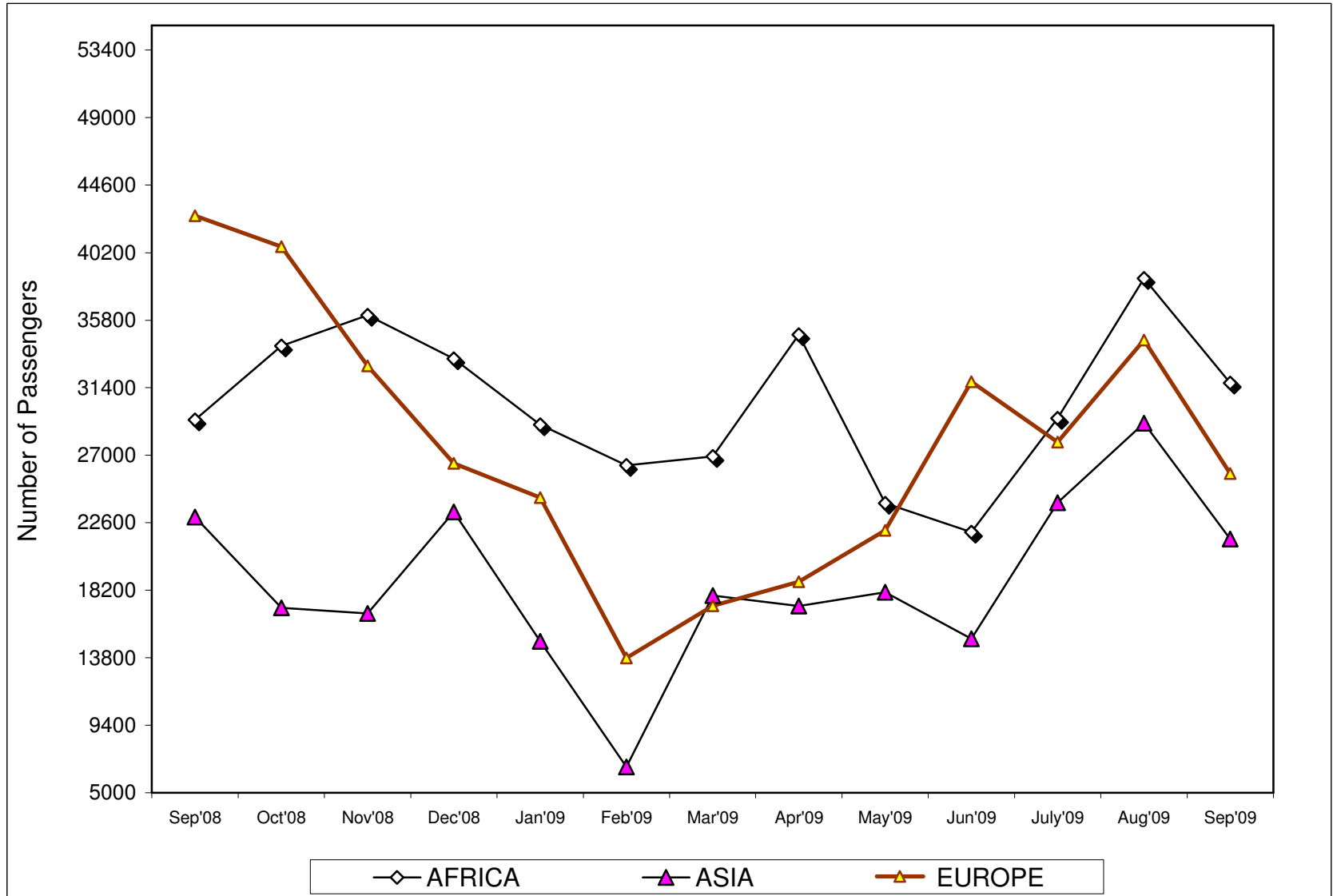


TABLE (18B): JOMO KENYATTA INT. AIRPORT INTERNATIONAL FLIGHTS ONLY- LANDED PASSENGERS BY PORT OF DESTINATION.

PORTS	2007	2008					2009								
	TOTAL	Sep	Oct	Nov	Dec	TOTAL	Jan	Feb	Mar	Apr	May	June	July	Aug	Sep
ADDIS ABABA (ADD)	42,261	1,238	4,493	4,212	1,204	25,643	858	3,232	1,308	1,088	835	3,116	1,545	2,103	1,382
CAIRO (CAI)	23,824	2,390	3,853	2,276	4,426	33,372	1,184	1,202	2,239	2,354	2,173	2,506	4,092	4,013	2,136
DAR ES SALAAM (DAR)	85,689	4,633	6,176	7,129	6,714	76,886	5,553	6,670	6,275	6,746	10,702	10,945	11,484	11,738	9,843
ENTEBBE (EBB)	118,612	10,372	10,747	10,555	10,082	120,988	8,756	8,591	9,565	9,531	9,808	9,080	10,484	10,568	9,848
HARARE (HRE)	15,555	1,170	1,109	1,120	1,325	13,310	1,155	1,016	1,233	1,434	682	989	1,297	1,698	1,249
JOHANNESBURG (JNB)	107,676	6,814	10,408	10,840	16,038	103,179	7,148	5,527	6,077	14,417	2,571	4,444	6,456	10,940	6,784
TOTAL AFRICA	393,617	26,617	36,786	36,132	39,789	373,378	24,654	26,238	26,697	35,570	26,771	31,080	35,358	41,060	31,242
BOMBAY (BOM)	70,627	5,183	4,852	755	7,355	54,557	1,616	1,121	4,150	4,479	6,223	4,800	5,302	5,572	4,835
DUBAI (DXB)	118,377	18,581	6,064	15,746	19,349	178,977	14,215	5,395	12,276	10,114	12,877	13,750	21,153	21,483	15,009
JEDAH (JED)	6,906	250	0	195	0	3,899	0	165	452	234	350	568	411	114	250
KARACHI (KHI)	0	0	0	0	0	0	0	0	0	0	0	0	0	0	0
MUSCAT (MCT)	-	0	0	0	0	-	0	0	0	0	0	0	0	0	0
TOTAL ASIA	195,910	24,014	10,916	16,696	26,704	237,433	15,831	6,681	16,878	14,827	19,450	19,118	26,866	27,169	20,094
AMSTERDAM (AMS)	183,515	13,121	17,022	14,772	7,284	110,997	5,355	5,294	5,441	6,692	5,939	8,512	8,692	7,514	7,714
BRUSSELS (BRU)	19,720	0	1,985	1,158	309	16,160	767	600	0	706	2,132	5,562	-	-	-
LONDON (LON)	189,493	18,100	20,682	13,118	14,865	154,715	8,949	6,201	9,768	7,089	11,503	11,326	19,150	16,979	15,477
PARIS-(CDG)&(PAR)	17,293	1,672	2,268	1,775	2,905	15,524	639	584	1,870	1,228	670	3,823	4,202	3,006	1,488
ROME (ROM) Z	-	1,813	0	0	0	-	0	0	0	0	0	0	0	0	0
ZURICH (ZRH)	25,579	0	0	1,996	4,065	19,807	1,521	1,099	0	1,854	1,500	1,995	1,345	1,011	849
TOTAL(EUROPE)	435,600	34,706	41,957	32,819	29,428	317,203	17,231	13,778	17,079	17,569	21,744	31,218	33,389	28,510	25,528
OTHERS(TOTAL) **	445,935	41,906	45,431	39,842	38,499	547,024	26,562	30,350	35,424	63,060	45,747	46,510	45,513	41,799	40,382
GRAND TOTAL	1,471,062	127,243	135,090	125,489	134,420	1,475,038	84,278	77,047	96,078	131,026	113,712	127,926	141,126	138,538	117,246

Source : Kenya National Bureau of Statistics

- no passengers landed

* Provisional

** Ports not listed

z Includes all planes from Italy

FIG 16: J.K.I.A. PASSENGERS BY REGION OF ORIGIN

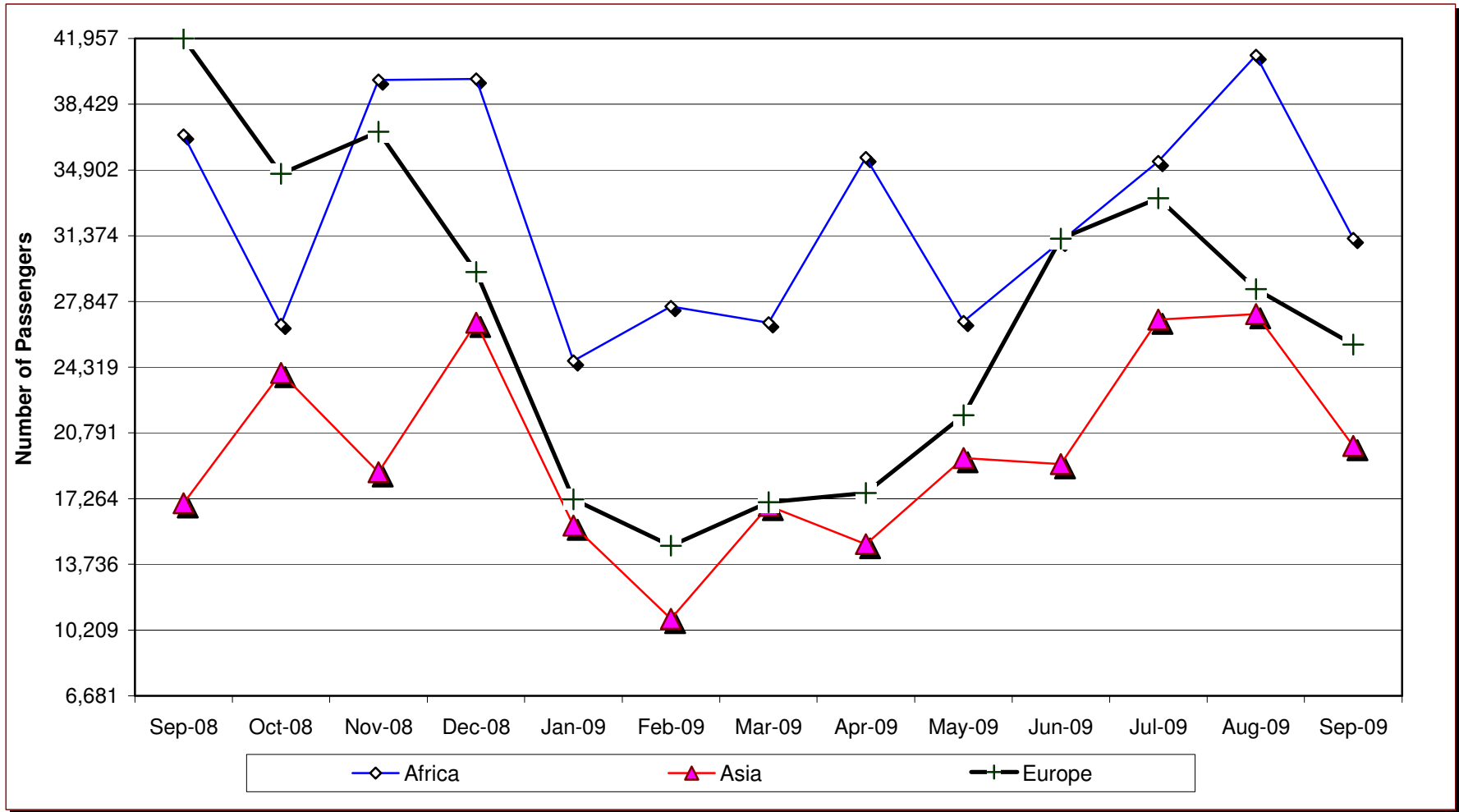


Table 18 C: New Vehicle Registration

<i>Body Type/Month</i>	2008					2009								
	<i>Sep</i>	<i>Oct</i>	<i>Nov</i>	<i>Dec</i>	<i>Cumulative 2008</i>	<i>Jan</i>	<i>Feb</i>	<i>Mar</i>	<i>Apr</i>	<i>May</i>	<i>Jun</i>	<i>Jul</i>	<i>Aug</i>	<i>Sep</i>
Saloons	1,630	1,603	1,527	1,833	18,686	1,497	708	943	1,459	1,266	1,670	1,880	1,298	1,523
St,Wagon	2,580	2,232	2,358	2,607	26,696	1,997	1,182	1,646	2,330	2,459	2,554	2,915	1,955	2,434
Vans,P/Ups,etc	479	680	587	757	7,034	613	621	652	496	538	557	697	549	613
M/Buses	426	373	370	387	5,206	332	366	334	386	372	356	437	397	338
Buses	104	108	104	148	1,243	65	70	104	77	88	74	93	69	92
Lorries	682	542	330	662	6,691	534	399	548	730	374	665	439	523	398
Trailers	88	166	247	221	2,100	208	281	229	255	216	211	313	223	233
Motors Cycles	5,964	6,680	6,471	5,447	51,412	7,688	8,193	9,204	8,360	8,362	9,317	4,463	3,824	7,283
3 Whellers	45	80	60	44	704	42	61	84	46	82	73	85	81	75
Wheeled tractors	143	136	87	124	1,262	85	139	130	107	78	41	94	56	95
Others	69	65	253	36	797	41	361	79	77	393	55	474	36	368
TOTAL	12,210	12,665	12,394	12,266	121,831	13,102	12,381	13,953	14,323	14,228	15,573	11,890	9,011	13,452

Source : Kenya National Bureau of Statistics

* Provisional

- Not specified