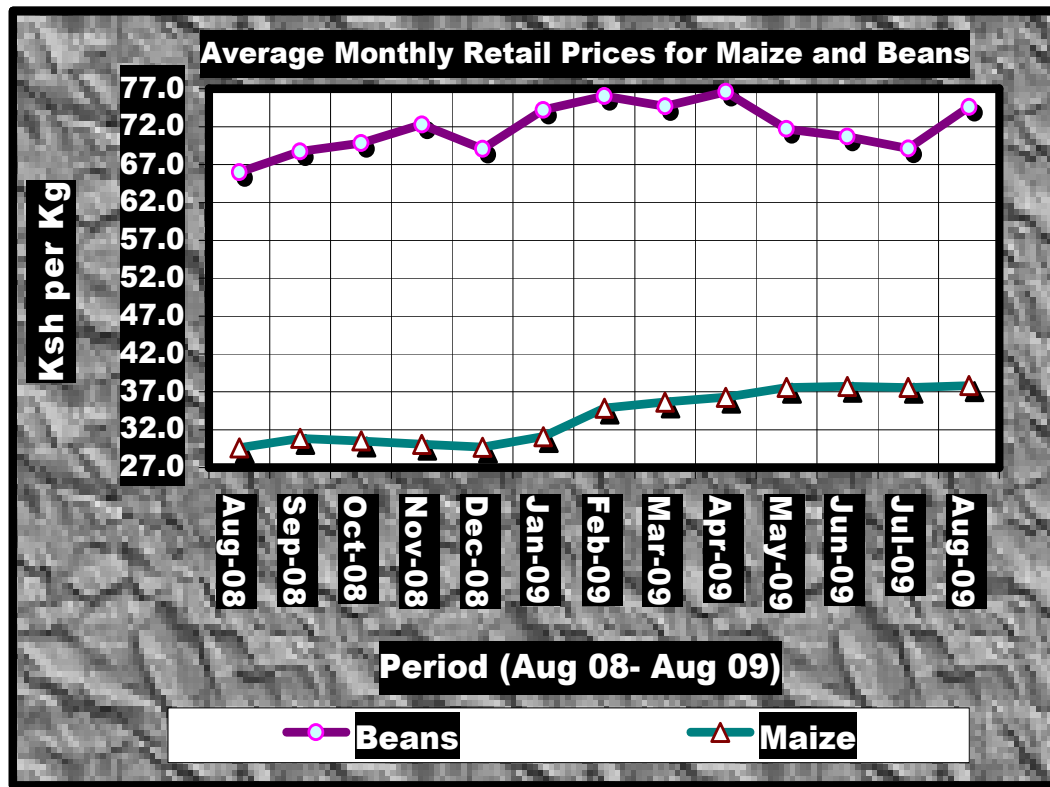


LEADING ECONOMIC INDICATORS



KENYA NATIONAL BUREAU OF STATISTICS

P.O. Box 30266- 00100 Nairobi
 Website: www.knbs.go.ke

Tel: 317586/88, 317612/22 Fax: 315977
 email: director@knbs.go.ke

AUGUST 2009

TABLE OF CONTENTS

key Highlights On Leading Economic Indicators	4
Table 1: Kenya Consumer Price Indices And Inflation Rate.....	9
Table 2: Mean Foreign Exchange Rates Of Kenya Shillings Against Selected Major Currencies At The End Of The Month	11
Table 3: Interest Rates (%).....	13
Table 4: Capital Markets – Nairobi Stock Exchange	14
Table 5 (A): Money Supply	15
Table 5b: Foreign Exchange Reserves.....	18
Table 6: Coffee Sales And Prices.....	19
Table 7: Tea Production And Prices*	20
Table 8(A): Average Monthly Retail Prices For Dry Maize In The Year 2008	21
Table 8(B): Average Monthly Retail Prices For Dry Maize In The Year 2009	22
Table 8(C): Average Monthly Retail Prices For Dry Beans Prices (2008)..	23
Table 8(C): Average Monthly Retail Prices For Dry Beans Prices (2009). 	24
Table 9: Export Of Coffee, Tea And Horticultural Produce... Error! Bookmark not defined.	
Table 10: Monthly Exports Of Horticultural Products.....	26
Table 11: Kenya’S External Trade, March 2008 – March 2009	27
Table 12: Major Destinations Of Domestic Exports, March 2008 – March 2009	28
Table 13: Major Origins Of Imports, March 2008 – March 2009	29
Table 12 (A): Domestic Exports By Broad Economic Category.....	30
Table 13 (A): Imports By Broad Economic Category	31
Table 14(A): Local Electricity Generation By Source	32
Table 14(B): Generation And Consumption Of Electricity	33
Table 14 (C): Consumption Of Petroleum Fuels	33
Table 14 (D): Weighted Average Retail Prices For Selected Fuel Products Within Nairobi	35
Table 14 (E): Weighted Average Retail Prices For Selected Fuels In Kenya.....	36
Table 14(F): Murban ADNOC Prices 2003-2008	37
Table 15: Value Of Building Plans Approved By Nairobi City Council (NCC)	38
Table 16(A): Domestic Production Of Sugar.....	39
Table 16(C): Production Of Assembled Vehicles	40

Table 16(E):	Cement Production And Consumption.....	41
Table 16(F):	Milk Intakes In The Formal Milk Sector	42
Table 17:	Visitor Arrivals* Through Jomo Kenyatta International Airport (J.K.I.A) And Moi International Airport (M.I.A).....	43
Table (18a):	Jomo Kenyatta Int. Airport International Flights Only- Embarked Passengers By Port Of Destination.....	44
table (18b):	Jomo Kenyatta Int. Airport International Flights Only- Landed Passengers By Port Of Destination.....	46
Table 18 C:	New Vehicle Registration	48

Charts

Fig. 1:	Overall Month On Month And Underlying Inflation Rates -----	10
Fig 2:	End Of Month Mean Exchange Rate Of Kenya Shillings Against Major Selected Currencies -----	12
Fig 3:	Interest Rates -----	13
Fig 4:	Nairobi Stock Exchange Shares Index -----	14
Fig 5:	Money Supply (M3) -----	17
Fig 6:	Foreign Exchange Reserves -----	18
Fig.7:	Coffee Sales At The Nairobi Coffee Exchange -----	19
Fig.8:	Tea Production -----	20
Fig 9:	Electricity Generation By Source -----	32
Fig 10:	Electricity Generation Consumption And Power Losses -----	33
Fig 11(A):	Average Retail Prices Of Selected Petroleum Products -----	35
Fig 11(B):	Weighted Average Prices For Lpg In Kenya -----	36
Fig 12:	Trend For Murban Adnoc Crude Oil Prices -----	37
Fig 13:	Milk Intake In The Formal Sector -----	42
Fig 14:	Visitors Arriving In Kenya Through The Main Airports -----	43
Fig 15:	J.K.I.A. Passengers By Region Of Destination -----	45
Fig 16:	J.K.I.A. Passengers By Region Of Origin -----	47

Key highlights on Leading Economic Indicators

Overview

The monthly Leading Economic Indicators Publication for August 2009 highlight trends in Consumer Price Indices (CPI) and inflation, interest rates, exchange rates, international trade, agriculture, energy, manufacturing, building and construction, tourism and transport.

Macroeconomic Indicators and Financial Intermediation

The CPI increased by 1.1 per cent from 341.19 points in August 2009 to 345.03 points in September 2009 while month-on-month overall inflation rate fell from 18.4 per cent in August 2009 to 17.9 per cent in September 2009. The month on month underlying inflation rate which excludes food items from the CPI basket also dropped from 3.5 per cent in August to 3.2 per cent in September 2009.

The Kenya Shilling had a mixed performance in September 2009 as it appreciated against the US Dollar, the Sterling Pound and the South African Rand while weakening against the Euro and the Japanese Yen. The Shilling also depreciated against the Ugandan Shilling while weakening against the Tanzanian currency in the same month. The Shilling appreciated against the US Dollar, the Sterling Pound and the South African Rand in September 2009 to trade at KSh 74.999, KSh 120.292, KSh 19.999, respectively. However, the shilling depreciated against the Euro and the Japanese Yen in the same period to trade at KSh 109.692 and KSh 83.375. Regionally, the Kenyan shilling depreciated against Ugandan Shilling to trade at the USh 25.600 while it appreciated marginally against the Tanzanian Shilling to trade at TSh 17.540 in September 2009.

The stability of the 91-day Treasury bill continued in July 2009 when it recorded the lowest rate at 7.22 per cent in the year. It declined marginally by 0.11 percentage points from 7.33 per cent in June 2009 to 7.22 per cent in July 2009. The weighted average lending rate offered by Commercial banks for loans and advances declined marginally from 14.79 per cent in July 2009 to 14.76 per cent in August 2009. The savings rate offered by the commercial banks also declined from 1.67 per cent to 1.65 per cent over the same period.

The Nairobi Stock Exchange (NSE) recovered its activities in June and July 2009 compared to the trend observed in the previous months of the year. The 20-share index (NSE 20) declined marginally from 3,294.6 points in June 2009 to 3,273.1 points in July 2009. Total value of shares traded also declined by 21.1 per cent from KSh 4.13 billion in June 2009 to KSh 3.26 billion in July 2009. Total number of shares declined by 21.1 per cent from 377.6 million shares to 298.0 million shares over the same period.

Broad money supply (M3) expanded marginally by 1.0 per cent from KSh 973.6 billion in July 2009 to KSh 983.2 billion in August 2009 while money and quasi-money (M2) contracted from KSh 828.7 billion to KSh 821.5 billion over the same period.

Gross Total Foreign Exchange Reserves contracted marginally by KSh 3.1 billion from KSh 370.9 billion in July 2009 to KSh 367.8 billion in August 2009 while Net Foreign Exchange Reserves also contracted by 3.5 per cent from KSh 287.4 billion to KSh 277.4 billion over the same period.

SECTORAL PERFORMANCES

a). Agriculture

The Nairobi Coffee Exchange was in recess in July 2009 while total coffee auctioned in August 2009 stood at 4,027 MT, which was the lowest to be auctioned at the exchange this year. Its average auction price stood at KSh 258.55 per kilogram, the highest recorded in 2009.

Quantity of processed tea declined by 15.1 per cent from 25,337 MT in June 2009 to 21,510 MT in July 2009. However, average auction price for processed tea increased from KSh 213.33 per kilogram to KSh 222.56 per kilogram over the same period.

Average price for dry maize increased marginally from KSh 37.6 per kilogram in July 2009 to KSh 37.8 per kilogram in August 2009 while average price for dry beans increased from KSh 69.1 per Kilogram to KSh 74.6 per kilogram over the same period.

b). International Trade

Total quantity of coffee exported declined significantly by 15.1 per cent from 6,950.0 MT in June 2009 to 5,872.4 MT in July 2009 while its export value fell significantly by 20.0 per cent from KSh 1,784.20 million to KSh 1,427.90 million over the same period.

Quantity of tea exported rose by 10.8 per cent from 27,054.1 MT in June 2009 to 29,981.7 MT in May 2009 while its value went up significantly by 18.7 per cent from KSh 5,516.60 million to KSh 6,548.50 million over the same period.

Quantity of horticultural produce exported declined further by 12.2 per cent from 14,545 MT in July 2009 to 12,771 MT in August 2009 while export value of horticultural produce also declined further by 6.7 per cent from KSh 3,555 million to KSh 3,318 million over the same period. The decline in horticultural produce may be attributed to the decline in cut flowers, fruits and vegetables by 5.3, 36.0 and 7.3 per cent, respectively.

Volume of trade improved by 4.6 per cent from KSh 91,077.02 million in June 2009 to KSh 95,271.15 million in July 2009. This was supported by a rise in total exports of 12.0 per cent from KSh 28,166.23 to KSh 31,533.06 and total imports increasing by a marginal 1.3 per cent over the same period.

Data available for major domestic exports by Broad Economic Category (BEC) indicates that food and beverages continued to dominate the export market with a contribution of over 40 per cent for most of the year followed by non food industrial supplies with a share of over 25 per cent. Share of exports by fuel and lubricants, machinery and other capital goods and, transport equipment remained nearly at the 2008 levels.

Imports by Broad Economic Category (BEC) indicate that non food industrial supplies, fuel and lubricants, machinery and other capital goods and transport equipment were the major contributors of imports into the country. However, decline in share of food and beverages and fuel and lubricants contributed to the marginal performance of the import market.

c). Energy

Total electricity generation increased by 3.3 per cent from 3,169.8 million KWh in the first half of 2008 to 3,275.8 million KWh in the same half of 2009. Hydro generation declined by 23.2 per cent while generation from thermal and geo-thermal rose by 27.3 and 15.1 per cent, respectively over the same period. In the same period, total domestic consumption of electricity declined marginally from 2,627.5 million KWh to 2,619.7 million KWh. Power losses worsened by 26.2 per cent from 508.7 million KWh to 641.9 million KWh over the same period.

Exports of electricity to Uganda declined significantly by 57.7 per cent from 33.63 million KWh in the first half of 2008 to 14.21 million KWh in the same half of 2009 while total imports of electricity from Uganda and Tanzania declined marginally over the same period.

Total consumption of petroleum products increased by 4.0 per cent from 1,389.14 thousand MT in the first half of 2008 to 1,444.92 thousand MT in the same half of 2009. The improvement in consumption of petroleum products was contributed by increases in consumption by light diesel, motor spirit and illuminating kerosene by 10.8, 17.1 and 25.8 per cent, respectively over the same period.

In the domestic market, average retail prices for motor gasoline, light diesel oil and illuminating kerosene in Kenya picked an upward trend in June 2009. Average retail prices for motor gasoline, light diesel oil and illuminating kerosene rose to retail at KSh 80.30, KSh 68.77 and KSh 59.75 per litre in August 2009 compared to KSh 80.23, KSh 69.58 and KSh 60.19 per litre in July 2009, respectively.

In the international market, the price of Murban crude oil has been in an upward trend since it recorded the lowest price level of US Dollars 44.95 per barrel in February 2009. The price of crude oil rose from US Dollars 66.95 per barrel in June 2009 to US Dollars 72.75 per barrel in July 2009.

d). Manufacturing and, building and construction

Domestic production of sugar declined significantly by 30.2 per cent from 47,410 MT in June 2009 to 33,078 MT in July 2009 while production of soft drinks declined marginally by 1.4 per cent from 26,934 MT in May 2009 to 26,552 MT in June 2009.

Production of new assembled vehicles rose by 4.2 per cent from 518 assembled vehicles in June 2009 to 540 assembled vehicles in July 2009 while production of galvanized sheets declined by 6.8 per cent from 14,563 MT in to 13,578 MT over the same period.

Quantity of cement produced declined further by 4.0 per cent from 258.5 thousand MT in June 2009 to 248.1 thousand MT in July 2009 while consumption of cement also declined marginally by 1.7 per cent from 204.2 thousand MT to 200.8 thousand MT over the same period.

The drought afflicting the country led to a decline in milk deliveries to the formal milk sector by 2.5 per cent from 33.4 million litres in June 2009 to 32.5 million litres in July 2009.

e). Tourism and Transport

The tourism sector seems to have picked up as witnessed by the total number of visitors who arrived through Jomo Kenyatta International Airport (JKIA) and Moi International Airport in August 2009. The number of visitors who arrived in the country in August 2009 stood at 100,314 visitors compared to 75,971 visitors in August 2009.

The number of passengers who embarked at Jomo Kenyatta International Airport (JKIA) increased by 22.0 per cent from 90,777 persons in May 2009 to 110,707 persons in June 2009 while number of passengers who landed increased by 12.5 per cent from 113,712 persons to 127,926 persons over the same period.

Total number of vehicles registered declined by 5.5 per cent from 13,102 vehicles registered in January 2009 to 12,381 vehicles registered in February 2009.

TABLE 1: KENYA CONSUMER PRICE INDICES AND INFLATION RATE

Base Oct 1997=100.

PERIOD	NAIROBI INDEX	REST* OF URBAN TOWNS INDEX	OVERALL KENYA INDEX	OVERALL MONTH ON MONTH INFLATION	UNDERLYING INFLATION RATE****
2008					
August	286.94	288.80	288.06	27.6	8.8
September	293.65	291.86	292.57	28.2	9.5
October	297.15	294.20	295.38	28.4	10.2
November	302.93	301.04	301.79	29.4	10.7
December	308.18	305.01	306.28	27.7	11.1
2009					
January	328.18	283.44	318.02	21.9	11.1
February	345.09	325.31	333.21	25.1	11.0
March	362.65	334.06	345.33	25.8	7.7
April	365.39	348.70	355.36	26.1	8.1
May	353.75	345.45	348.76	19.5	7.0
June	337.35	345.72	342.38	17.8	5.8
July	327.60	344.11	337.80	17.8	4.5
August	333.78	346.10	341.19	18.4	3.5
September	337.87	349.90	345.03	17.9	3.2

Source: Kenya National Bureau of Statistics

* Rest of Urban include: Nyeri, Mombasa, Malindi, Kilifi, Meru, Garissa, Kisii, Kisumu, Nakuru, Kitale, Kabarnet, and Kakamega.

*** Provisional

FIG. 1: OVERALL MONTH ON MONTH AND UNDERLYING INFLATION RATES

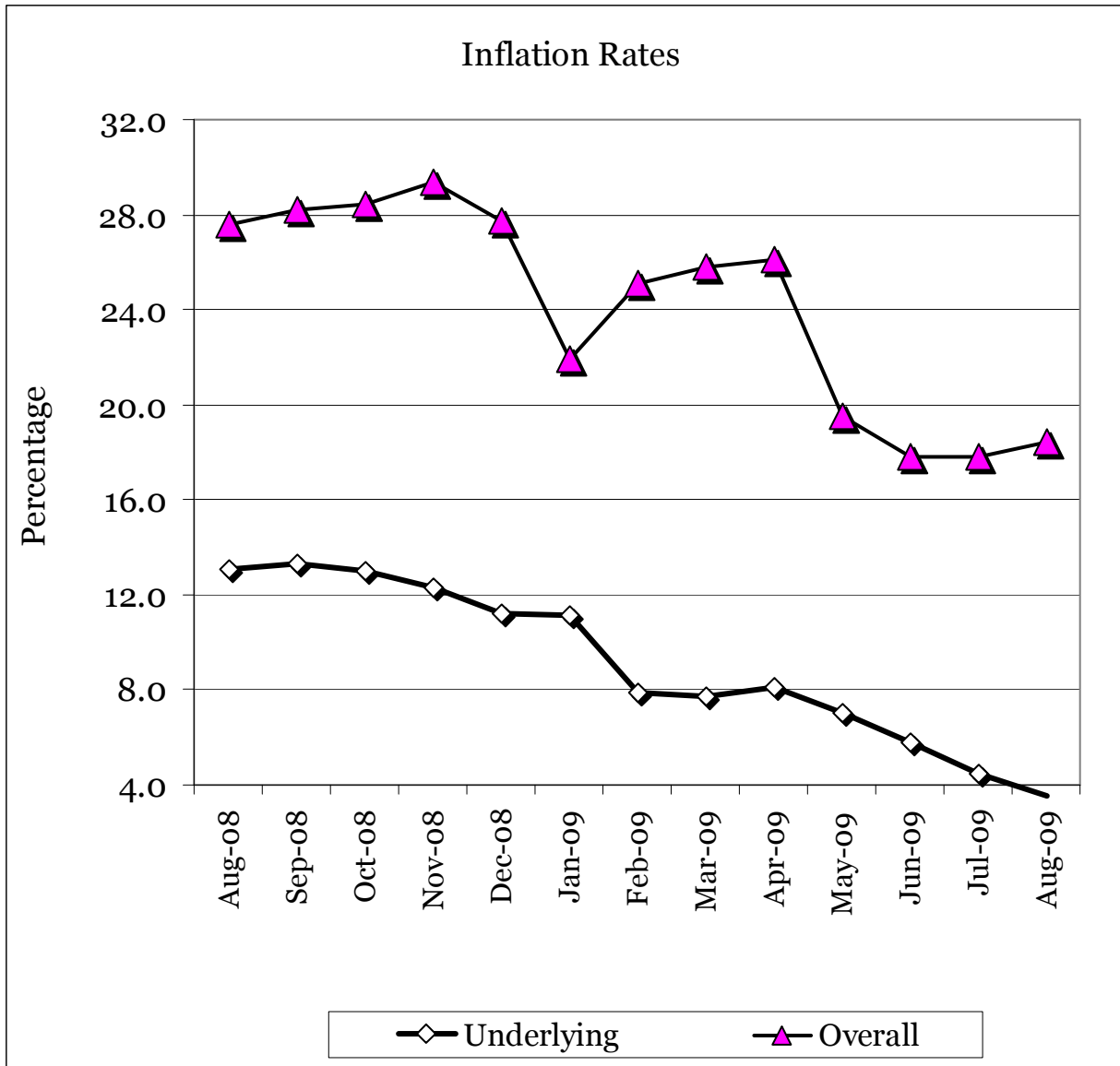


TABLE 2: MEAN FOREIGN EXCHANGE RATES OF KENYA SHILLINGS AGAINST SELECTED MAJOR CURRENCIES AT THE END OF THE MONTH

TABLE 2: Mean* Foreign Exchange Rates of Kenya Shillings against Selected Major Currencies at the End of the Month

CURRENCY	2008				2009								
	Sep	Oct	Nov	DEC	Jan	Feb	Mar	April	May	June	July	Aug	Sep
1 US Dollar	73.219	79.653	77.861	77.711	79.544	79.687	80.431	78.662	78.348	77.021	76.607	76.233	74.999
1 Sterling Pound	132.104	130.221	119.757	112.347	113.126	113.849	114.845	116.701	125.530	126.695	126.588	123.448	120.292
1 EURO	105.277	101.994	100.408	109.482	102.546	101.463	106.424	104.802	109.697	107.848	108.214	108.711	109.692
100 Japanese Yen	70.030	81.201	81.810	86.065	88.974	81.592	82.134	80.838	81.040	80.799	80.481	82.181	83.375
1 SA Rand	8.792	7.920	7.465	8.268	7.896	8.033	8.338	20.976	20.892	20.536	20.428	20.328	19.999
USHS/KES	22.815	23.603	25.392	25.125	25.005	24.879	26.514	28.349	28.463	26.844	27.517	26.957	25.600
TSHS/KES	15.932	16.352	16.371	16.793	16.280	16.477	16.350	17.035	16.880	17.074	17.296	17.283	17.540

* Mean of commercial banks buying and selling exchange rates prevailing at the end of the month

Source: Kenya National Bureau of Statistics

FIG 2: END OF MONTH MEAN EXCHANGE RATE OF KENYA SHILLINGS AGAINST MAJOR SELECTED CURRENCIES

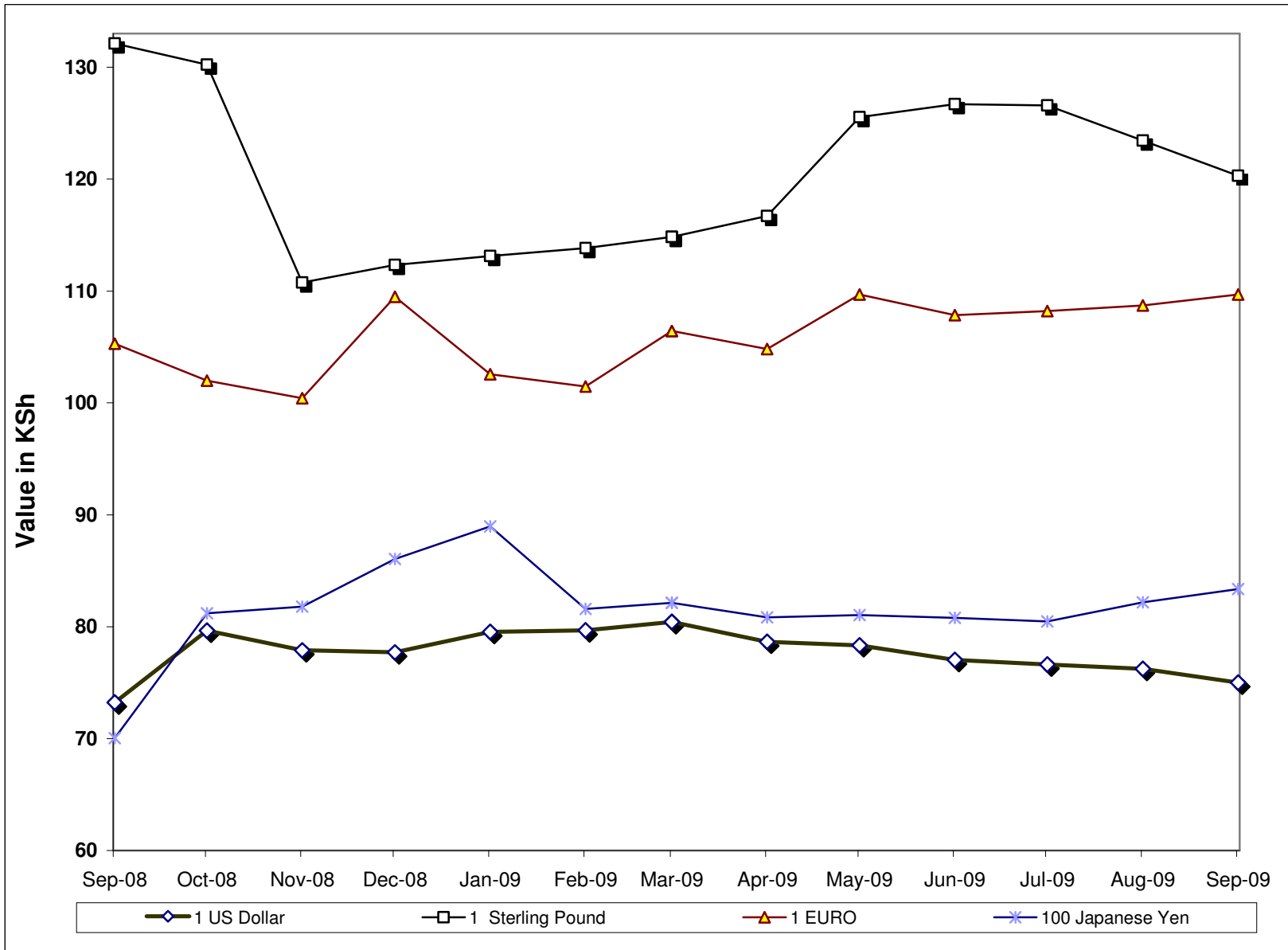


Table 3: Interest Rates (%)

MONTHS	Average Yield Rates 91 - Days Treasury Bills	Rates for Commercial Banks Loans and Advances (Weighted Average)	Overdraft Rates	Inter - Bank Rates	Savings (Commercial Banks Rates)
2008					
July	8.03	13.90	13.46	8.06	1.67
August	8.02	13.66	13.11	6.93	1.68
September	7.70	13.66	13.43	6.70	1.73
October	7.75	14.12	13.91	6.81	1.74
November	8.39	14.32	13.85	6.84	1.61
December	8.59	14.87	14.39	6.68	1.65
2009					
January	8.47	14.78	13.84	5.92	2.10
February	7.55	14.67	13.46	5.49	2.13
March	7.31	14.87	13.78	5.72	1.90
April	7.34	14.71	13.66	5.73	1.91
May	7.45	14.85	14.13	6.55	1.67
June	7.33	15.09	14.41	2.98	2.08
July	7.22	14.79	13.94	2.67	1.67
August	-	14.76	13.90	-	1.65

Source : Central Bank of Kenya

- data not available

FIG 3: INTEREST RATES

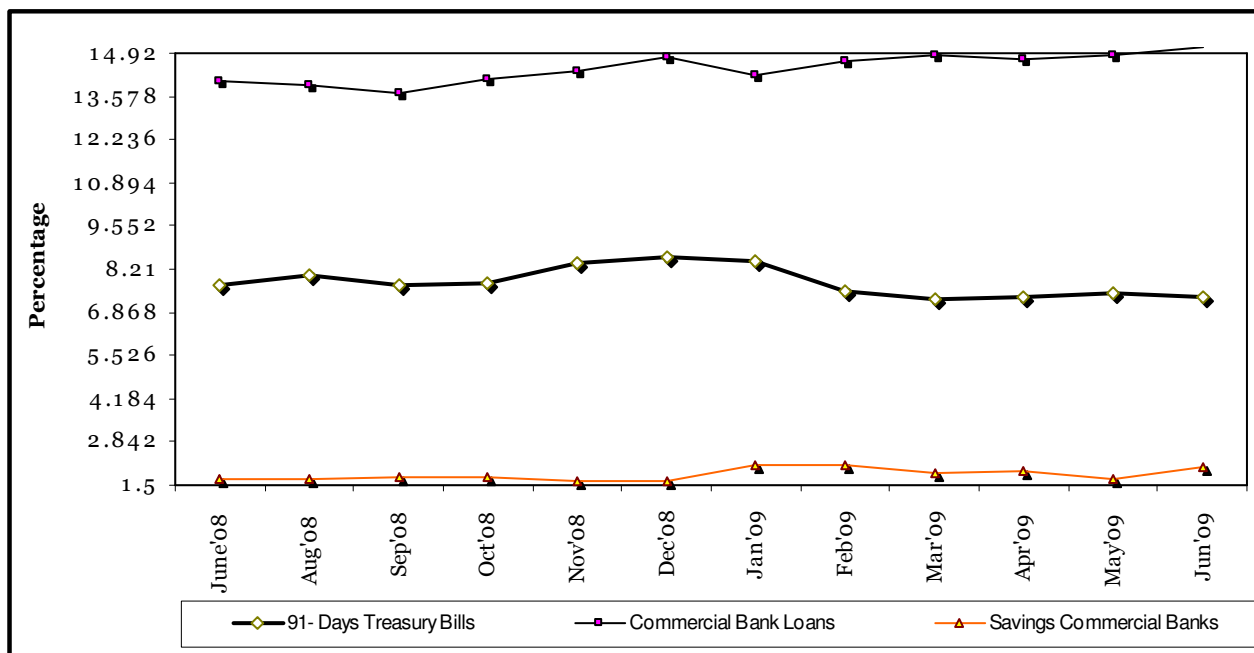


TABLE 4: CAPITAL MARKETS – NAIROBI STOCK EXCHANGE

TABLE 4: CAPITAL MARKETS -NAIROBI STOCK EXCHANGE

MONTH	NUMBER OF TRANSACTIONS	NUMBER OF SHARES ('000)	VALUE OF SHARES ('000 KShs)	SHARES INDEX Base Jan 1966=100
Apr-08	57,526	141,766	5,635,570	5,336.0
May-08	71,959	168,034	6,836,652	5,175.8
Jun-08	143,942	2,154,897	22,130,018	5,185.6
Jul-08	132,507	983,747	14,282,189	4,868.3
Aug-08	83,372	490,810	7,490,223	4,648.8
Sep-08	66,060	485,283	6,787,824	4,180.4
Oct-08	44,190	393,530	3,642,410	3,386.7
Nov-08	48,277	290,953	3,723,721	3,341.5
Dec-08	29,302	170,900	4,620,000	3,521.2
Jan-09	37,310	177,553	2,624,391	3,198.9
Feb-09	30,977	159,640	1,645,278	2,474.8
Mar-09	35,328	207,390	2,414,121	2,805.0
Apr-09	37,732	215,560	2,554,381	2,800.1

Source : Nairobi Stock Exchange

FIG 4: NAIROBI STOCK EXCHANGE SHARES INDEX

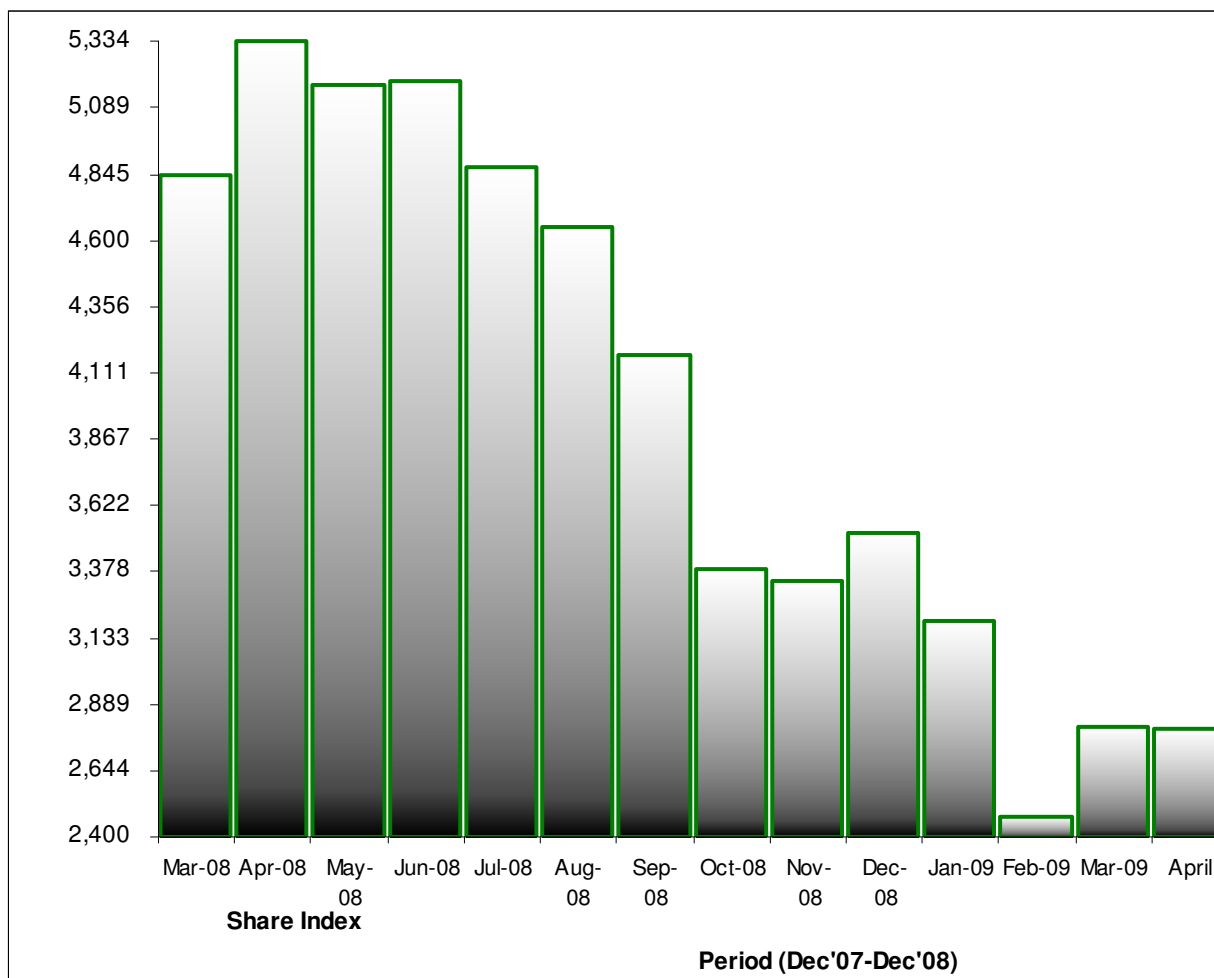


TABLE 5 (a): MONEY SUPPLY

KSh Million

As at end of	MONEY AND QUASI MONEY (M2)				BROAD MONEY (M3)***	% CHANGE****
	MONEY (M1)*	QUASI - MONEY		TOTAL (M2)		
		(Commercial Banks)**	(NBFIs)			
2008						
August	383,424	328,254	12,678	724,356	854,952	0.53
September	385,004	338,783	12,677	736,464	859,328	0.51
October	398,571	342,978	12,489	753,883	883,497	2.81
November	393,400	345,872	12,912	751,184	890,233	0.76
December	392,778	360,300	13,531	766,471	901,055	1.22
2009						
January	398,736	352,411	12,623	763,876	895,397	-0.63
February	380,498	374,485	13,343	768,326	900,031	0.52
March	408,331	358,243	14,082	780,656	906,071	0.67
April	382,800	396,291	14,488	793,579	928,839	2.51
May	392,856	387,507	15,353	795,716	928,604	-0.03
June	400,653	396,114	15,591	812,358	950,239	2.33
July	427,483	386,259	14,964	828,706	973,623	2.46
August	433,932	386,681	888	821,501	983,177	0.98

Source : Central Bank of Kenya

* Currency in circulation less cash in banks plus all demand deposits except those of Central Government, Local Govt, Banks, non residents and foreign currency deposits.

** All other deposits in commercial banks except those of Central Government.

*** Broad Money (M3) includes M2 and Quasi - Money supplied by Non Bank Financial Institutions

**** Compared with previous month.

***** Provisional

*****From January 2006 in line with the harmonisation of definitions of monetary aggregates within East African Countries(EAC) monetary definitions have been redefined for the following aggregates.

1. Base money =currency outside banks plus deposits at the Central Bank

2.Narrow Money (M1) =currency in circulation plus demand deposits

3. Broad Money M3 in the old series becomes broad money (M2) and is defined as M1 plus net Quasi Monetary deposits liabilities of both commercial banks and NBFIs

4.M3X in the old series becomes extended broad money supply (M3) and is defined as new M2 plus foreign currency deposits(FCDs)

5. M3XT in the old series is redefined as M4 and consists of new M3 plus other liquid assets.

FIG 5: MONEY SUPPLY (M3)

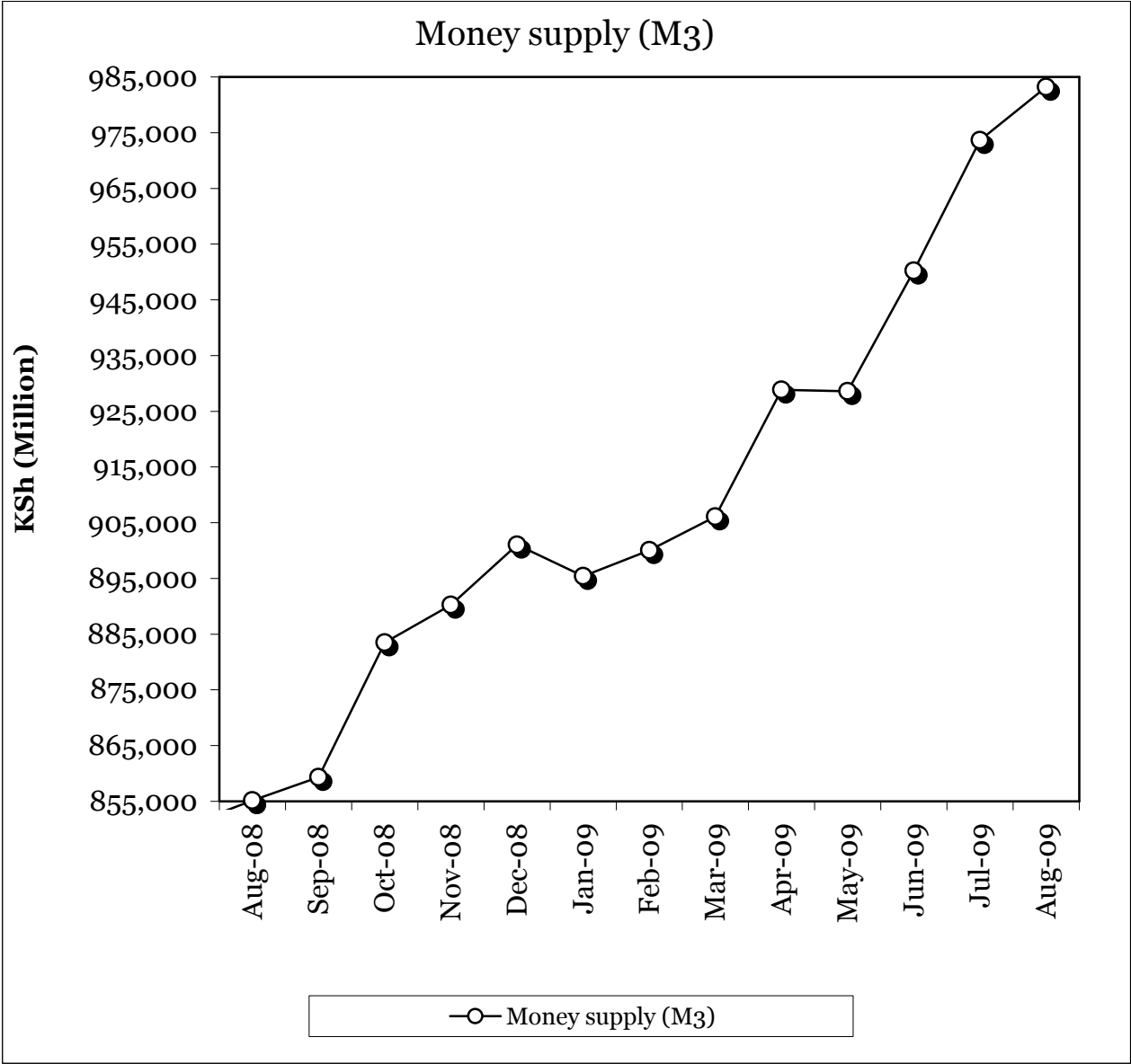


TABLE 5b: FOREIGN EXCHANGE RESERVES

MONTHS	CENTRAL MONETARY AUTHORITY			COMMERCIAL BANKS	GROSS TOTAL	NET FOREIGN EXCHANGE
	CENTRAL BANK	CENTRAL GOVERNMENT	TOTAL			
KSh. Million						
2008						
August	224,770	1,395	226,165	139,078	365,243	271,084
September	231,449	1,471	232,920	136,265	369,185	264,904
October	234,167	1,546	235,713	143,976	379,689	273,651
November	224,119	1,502	225,621	128,823	354,444	260,076
December	223,549	1,533	225,082	137,185	362,267	260,593
2009						
January	220,115	1,553	221,668	125,621	347,289	261,973
February	218,391	1,515	219,906	128,258	348,164	259,398
March	217,444	1,548	218,992	129,215	348,207	267,802
April	214,777	1,548	216,325	136,300	352,625	279,198
May	228,578	1,548	230,126	112,920	343,046	261,865
June	246,970	1,548	248,518	123,618	372,136	279,709
July	245,554	1,548	247,102	123,813	370,915	287,432
August	249,306	1,548	250,854	116,967	367,821	277,394

FIG 6: FOREIGN EXCHANGE RESERVES

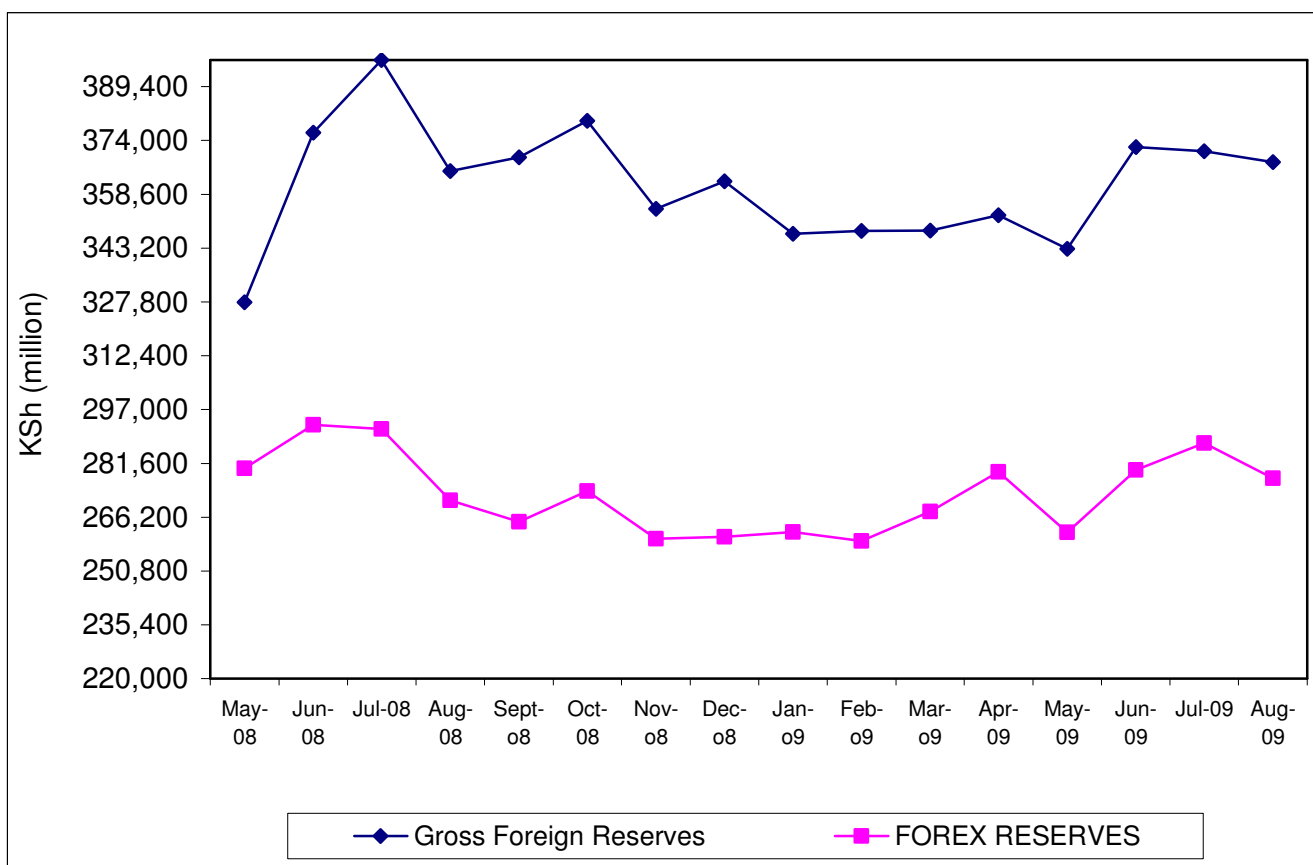


TABLE 6: COFFEE SALES AND PRICES

Months	2007			2008***			2009***		
	QUANTITY (MT)	PRICE (\$ /kg)	PRICE (Ksh /kg)	QUANTITY (MT)	PRICE (\$ /kg)	PRICE (Ksh /kg)	QUANTITY (MT)	PRICE (\$ /kg)	PRICE (Ksh /kg)
January	4,670	2.88	201.48	2,344	2.89	203.63	5,643	2.01	159.90
February	5,064	3.03	211.04	4,899	3.12	220.19	6,356	2.17	172.92
March	6,839	2.99	207.62	6,117	3.09	193.98	8,721	3.13	156.29
April	6,324	2.67	182.91	6,374	2.72	169.14	7,129	2.88	144.22
May	6,991	2.47	166.41	3,179	2.34	144.93	5,763	2.69	210.43
June	5,451	2.18	145.61	0	0.00	0.00	4,297	2.64	205.71
July	4,669	2.11	141.77	1,957	2.64	177.50	0	0	0
August**	0	0	0	2,173	2.61	179.50	4,027	3.39	258.55
September	3,817	2.36	157.96	3,878	2.37	173.56			
October	4,252	2.24	150.18	2,253	1.66	132.37			
November	2,895	2.21	142.15	2,517	1.95	151.92			
December	1,296	2.86	178.73	3,014	2.08	161.50			
Annual	52,269	2.56	173.91	38,704	2.60	177.22			

Source : Coffee Board of Kenya

* Auction Price

** Nairobi Coffee Exchange was in recess for most of August 2003, 2005,2006,2007,June 2008 and July 2009

*** Figures subject to revision

NB: MT denotes Metric Tonnes

FIG.7: COFFEE SALES AT THE NAIROBI COFFEE EXCHANGE

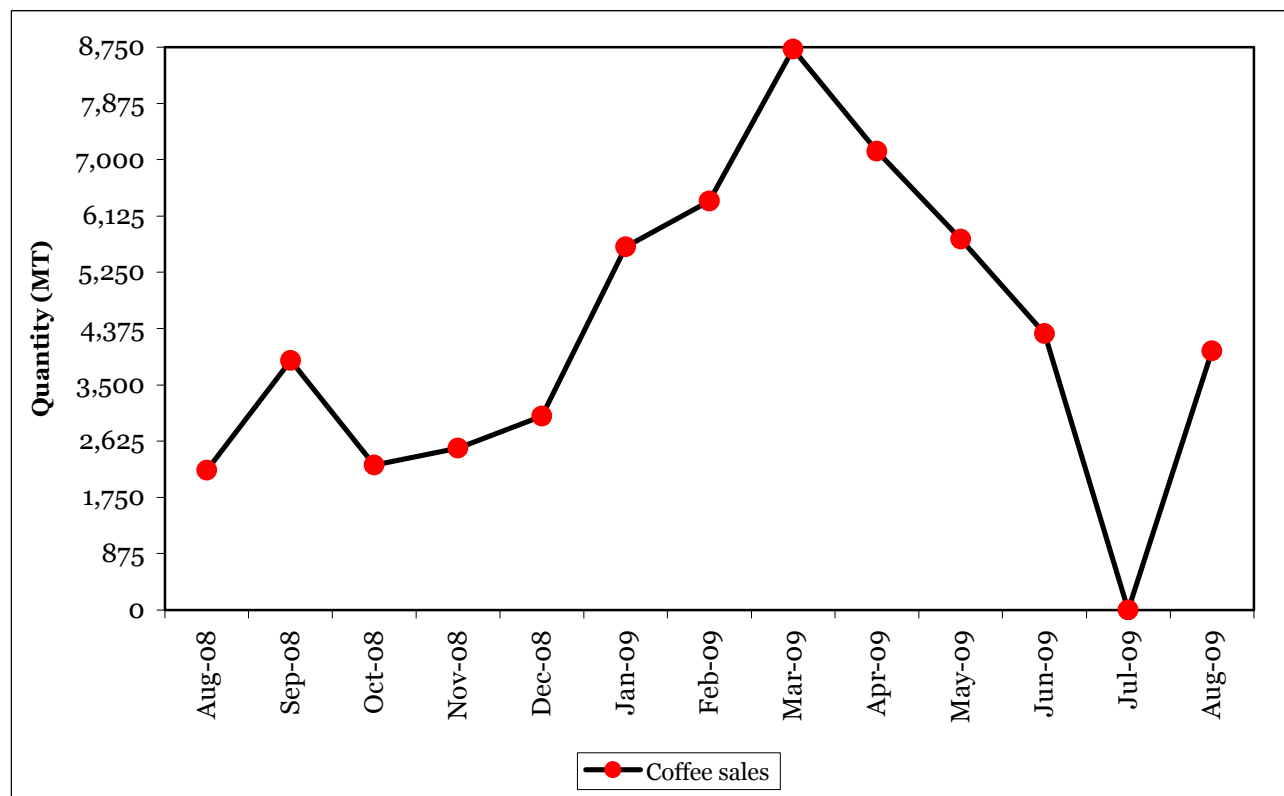


TABLE 7: TEA PRODUCTION AND PRICES*

Months	2008**			2009**		
	QUANTITY	PRICE*	PRICE*	QUANTITY	PRICE*	PRICE*
	(MT)	(\$/kg)	(KShs/kg)	(MT)	(\$/kg)	(KShs/kg)
January	29,745	2.28	153.94	25,484	2.30	182.33
February	24,094	2.42	169.94	21,537	2.27	180.89
March	16,916	2.21	145.10	18,779	2.32	184.04
April	27,415	2.31	143.67	18,343	2.43	193.53
May	36,402	2.28	140.85	29,803	2.56	200.23
June	22,817	2.43	154.16	25,337	2.74	213.33
July	24,239	2.55	169.00	21,510	2.90	222.56
August	24,494	2.77	187.60			
September	32,061	2.81	195.36			
October	35,307	2.29	175.90			
November	34,406	1.88	146.80			
December	37,922	1.89	146.21			
Annual	345,816	2.32	160.41			

Source:Tea Board of Kenya

MT for Metric Tonnes

*Auction prices

**Figures subject to revision

FIG.8: TEA PRODUCTION

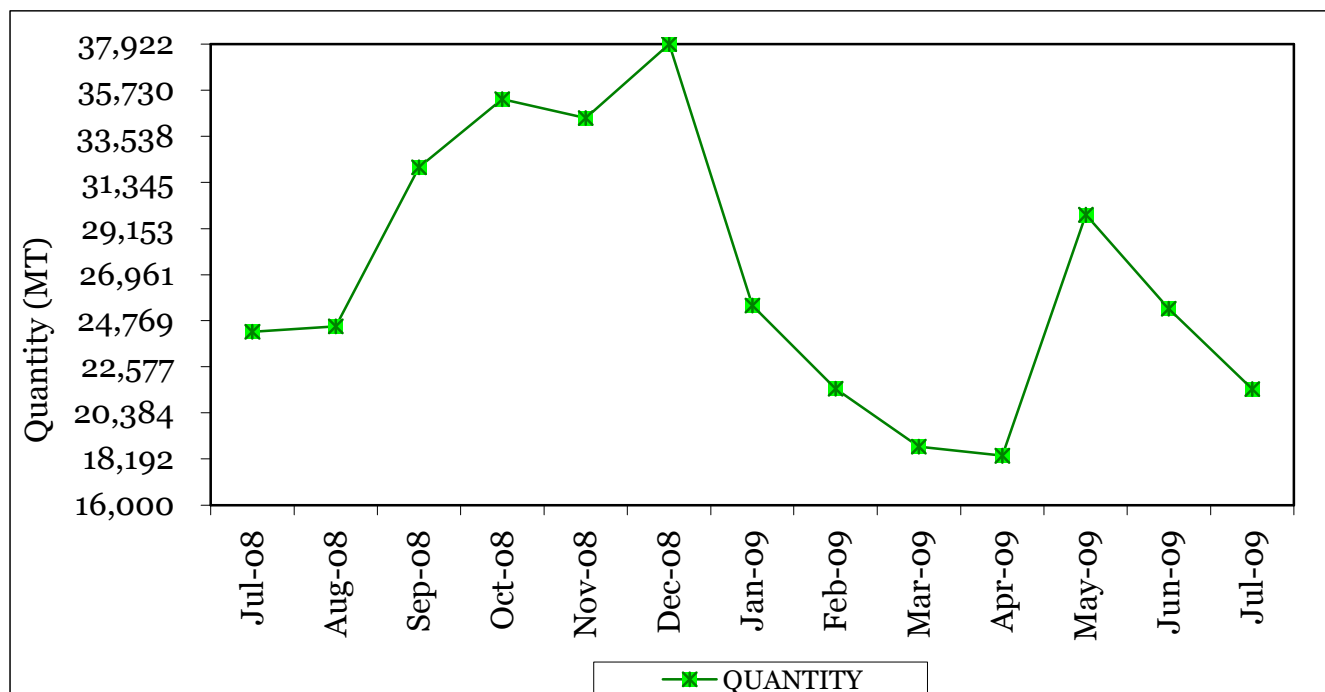


Table 8(a): Average Monthly Retail Prices for Dry Maize in the Year 2008

LIMURU	17.5	17.5	17.5	22.5	25.0	26.3		27.5	30.0	30.0	32.5	30.0
THIKA	19.7	21.9	16.7	19.1	18.2			28.6	35.0			
GATUNDU	17.9	23.8	23.8	19.1	19.1			30.4	36.4	31.8		
MUTHITHI	19.1	14.6		21.1	24.9	24.0	30.0	30.0	32.5	35.0	35.0	
MUKUYU	17.5	18.4	17.7	20.3	35.5	27.6	29.3	44.3	30.0	44.8	33.3	32.6
KIRIAINI	16.7	16.7	19.1	19.1	25.4	49.3	50.5				33.3	33.3
ENGINEER	15.0		15.9									
NANYUKI	18.2	18.5	20.0	22.5	24.0	24.4	22.5	25.0	25.0	25.0	35.0	30.0
NYAHURURU	20.0	20.0	17.5	17.7	20.0	20.0	22.5					
MARIAKANI	20.0	20.0	20.0	23.5	25.0	25.0	25.0	30.0	30.0	30.0		
KALOLENI	20.0	20.0	20.7	24.5	25.0	25.0	25.0	25.0	30.0	30.0		
MALINDI	27.8	27.8	27.8	26.9	28.4	30.0		28.0	28.0	30.0	30.0	30.0
KIBAUNI KILIFI	20.0	20.0	20.7	25.0	25.0	25.0	27.0	25.0	25.0	30.0		
UKUNDA	22.5		30.0	36.0	36.0							
MWEMBE TAYARI	25.0	20.0										
MACKINON			30.0	30.0	34.0	30.0	30.0					
SEGA	24.0											
KONGOWEA	25.0	20.0										
GARSEN	25.0	22.5	20.0	23.3	25.0	30.0						15.0
RUNYENJES	15.0	15.0	25.8	20.0	20.0	10.0						32.5
EMBU TOWN	17.5	18.8	15.0	20.0	20.0			30.0	35.0	26.3		
SIKAGO	17.5	17.5	15.0	17.5	18.5	29.4		20.0	25.9	31.8	33.3	30.7
MWINGI	16.0	16.0	16.0	16.5	19.0				28.0			
MIGGWAINI			14.0	14.0	17.8	21.0			28.0	30.0		
KALUNDU	15.0	16.0	17.0									
MACHAKOS TOWN	16.0	17.0	17.0								32.0	30.0
TALA	16.0	18.0	17.0	15.7	17.1			27.0	28.0	28.0	25.0	31.9
MAUA			21.3	25.0	31.7			37.5	37.5	30.0	30.0	30.0
KIANJAI			16.7	19.5	20.0			31.1		35.6	35.6	29.2
GAKOROMERE	13.6	16.0	12.7	24.3	18.3		18.2			27.3	31.8	
WOTE	17.0	17.0	18.0	18.0	20.0	22.0			27.0	27.0	32.0	32.0
GARISA TOWN			25.0		30.3							
DARAJA MBILI	17.3	20.5	18.6	20.0	23.0	24.6	22.7	24.1	24.1	31.8	31.8	
KIBIRIGO		20.5	20.5									
NYANGUSU	14.3		16.7			31.0		25.0				
RIOCHANDA		16.8	21.4									
NYABITE		16.0	20.5									
MOGONGA	14.3	14.3				31.0						
NYAMACHE	16.7	17.1	17.5			31.0						
KIBUYE		17.3	18.2	21.4	29.6					27.3	22.7	
AHERO	23.8	22.7							28.5	27.3	29.6	
KIBOSWA		19.1	22.7	27.3					25.0	27.3	25.0	
SONDU	20.5	20.5			27.3					27.3	31.8	
BONDO		20.0	20.0	29.0	25.0	25.5	27.5	27.0	26.5	26.5		
SIAYA	22.7	16.4	19.6							27.3	27.3	
NGIYA	18.2	22.7	17.3							27.3	29.6	
UNGUNJA	22.7	15.2	17.3	18.2						27.3	29.6	
OYUGIS		18.6	20.0									
KEHACHA		17.5	20.0	21.2	24.4	25.0						
KABARNET	15.0	15.0	15.0	17.2	22.8	25.0	25.0	25.0	30.0	30.0		
NAKURU TWON	24.2	21.7	22.2	22.2	22.2		27.8	27.8	27.8	27.8	27.8	27.8
KAPSABET		19.1	19.1	25.0	23.9	25.6	25.7	29.6	26.2	23.8	26.2	
KITALE		17.5	17.5	25.0	26.7	24.1	25.8	28.6	29.5	26.2		
ELDORET	20.0	15.4	15.0	15.5	19.4	22.0	22.0	26.5	31.8	25.0	20.0	20.0
BURN FOREST	12.5	15.0	15.0									
TURBO	13.3	13.4	37.5	16.7	18.5	20.7	20.7	21.2	24.1	20.0	20.0	20.0
KIPKAREN	15.0	16.0	16.1	25.0	27.0	26.3	29.4	32.5	20.0	20.0	20.0	22.0
KAJIADO TOWN	25.0	20.0		25.0	35.0	21.7	25.0		25.0	40.0	40.0	40.0
BUNGOMA TOWN	16.7	16.7	16.7	16.6	20.4	26.0	25.1	25.0	25.0	27.5	30.0	29.0
KIMILILI				16.2	21.8	27.7	27.5	27.0	25.0	27.5	27.5	25.0
KAPSOKWONY		16.2	17.5									
BUTERE		23.6	21.7	23.9	23.1	24.3		17.4	23.9	23.9		
KAKAMEGA	20.5	18.2	19.6	21.4	23.6		26.4	19.1	22.7	27.3		
MUMIAS			28.6	26.2	23.1	23.9		20.5	23.9	22.0	20.0	
MUNDETA	19.1	16.7	16.7	19.1	26.2	26.2		26.2	28.6	28.6	28.6	
CHEPTULA	23.8	16.7	16.7	21.4	26.2	26.2	26.2	26.2	28.6	30.0	28.6	
Mbale	23.8	16.7			26.2	26.2		26.2	26.2	28.6	28.6	
KAWANGWARE	21.0	22.0	25.0	46.5	30.0	29.3	29.3	30.0	33.3	33.0	33.3	33.3
BURMA	25.0	25.0	25.0	32.5	25.0	25.0	33.3	31.3	35.50	38.9	38.9	44.4
KIKOMBA	21.5	22.0	22.0	23.5	26.3	35.0	35.0	30.0	36.8	35.0	35.0	36.4
KANGEMI	22.0	22.5	23.0	23.0	27.3	30.0	30.0	30.0	31.0	31.0	33.3	33.3
KOROKOCHO	20.0	20.0	21.5	23.0	21.1	26.2	38.9	36.6	33.3	33.3	33.3	36.4
TOI	21.4	21.4	23.8	23.8	26.2	28.6	28.6	31.0	31.0	31.0	33.3	33.3
Overall Average Prices	19.7	18.7	20.2	21.4	23.8	25.9	26.7	29.6	30.9	30.5	30.1	29.7

Table 8(b): Average Monthly Retail Prices for Dry Maize in the Year 2009

Maize prices 2009								
Market	JAN	FEB	MAR	APR	MAY	JUNE	JULY	AUG
KIAMBU	35.0	35.0	.	.	33.8	34.7	48.6	.
LIMURU	30.0	32.5	.	.	37.5	37.5	37.5	.
MUTHITHI	35.0	35.0	35.0	35.0	40.0	.	.	.
MUKUYU	33.3	35.0	26.0	33.3	35.7	38.1	.	.
KIRIAINI	33.3	38.1	.	35.7	38.1	38.1	.	.
NANYUKI	35.3	33.3	34.2	43.8	44.4	50.0	44.4	44.4
SIPLI	20.0	20.0	46.6	25.0
MARIAKANI	32.0
KALOLENI	32.0
MALINDI	30.0	35.0	35.0	35.0	40.0	.	.	.
KIBAUNI KILIFI	35.0
GARSEN	22.5	.	25.0	25.0	25.0	.	.	.
RUNYENJES	35.0	37.5	37.5	37.5	40.0	35.0	35.0	.
EMBU TOWN	37.5	37.5	37.5	51.2	42.5	40.0	35.0	.
SIKAGO	29.6	35.7	37.5	.	43.2	38.1	37.5	35.0
MIGWANI	.	35.0	33.0	40.0	35.0	34.0	30.0	.
MACHAKOS TOWN	31.6	33.0	32.0	33.0	38.9	32.0	33.0	.
TALA	30.0
MWENDANTU	31.8	27.3	27.3	30.0	32.0	33.0	35.0	.
WOTE	30.0	30.0	30.0	32.0	.	32.0	32.0	.
GARISSA TOWN	40.0	38.9
DARAJA MBILI	28.6	31.8	31.8	38.6	33.3	31.8	.	.
BONDO	30.0	35.0
KABARNET	25.0	29.0	30.0	35.0	35.0	.	.	.
KAPSABET	23.9	32.6	32.6	35.7	40.5	35.7	.	.
KITALE	26.2	28.6	35.0	35.0	.	37.5	35.0	.
ELDORET	27.3	29.5	29.8	31.0	33.3	40.0	40.0	40.0
TURBO	26.2	28.6	.	31.0	31.0	40.0	40.0	40.0
KIPKAREN	25.0	32.5	31.8	33.3	37.5	41.0	37.5	32.5
KAIADO TOWNSHIP	.	.	.	50.0
BUNGOMA TOWN	27.3	.	31.8	35.0	40.0	40.0	37.5	37.5
KIMILILI	37.5	40.0	.
KAPSOKWONY	42.5	40.0	.	.
MUDETE	28.6	35.7	33.3	38.1	35.7	.	.	.
CHEPTULU	28.6	33.3	33.3	38.1	35.7	.	.	.
MBALE	28.6	33.3	33.3	38.1	35.7	.	.	.
KAWANGWARE	40.0	37.5	38.1	35.7	38.1	38.1	36.4	37.1
BURMA	38.1	38.1	42.9	45.0	39.5	40.7	40.0	42.0
KIKOMBA	25.0	75.0	66.7	35.0	43.5	40.9	39.1	35.7
KANGEMI	37.5	37.5	55.0	31.8	37.5	38.0	37.5	38.0
KOROGOCHO	40.9	38.1	36.4	41.0	40.0	36.0	.	35.7
KIBERA(TOI)	35.0	35.0	35.7	40.0	40.0	39.1	38.5	35.7
Average	31.1	34.8	35.7	36.3	37.6	37.7	37.6	37.8

Source: Kenya National Bureau of Statistics

. Data not available

Table 8(c): Average Monthly Retail Prices for Dry Beans Prices (2008)

Market	Ksh per kg											
	Jan	Feb	Mar	Apr	May	Jun	Jul	Aug	Sep	Oct	Nov	Dec
KIAMBU	38.1	35.7	35.5	60.0	71.7	75.0	57.5	75.0	80.0	75.0	80.0	75.0
LIMURU	75.0	60.0	60.0	70.0	75.0	70.0	.	75.0	75.0	75.0	75.0	70.0
THIKA	55.0	54.6	54.6	45.5	60.0	.	.	.	80.0	.	.	.
GATUNDU	39.3	45.2	42.9	47.6	38.1	.	.	76.2	72.7	76.2	.	.
MUTHITHI	57.1	52.4	.	55.4	61.8	56.7	65.0	70.0	75.0	100.0	75.0	.
MUKUYU	38.1	38.1	56.1	59.1	54.8	59.1	58.1	59.1	59.1	48.9	70.5	74.6
KIRIAINI	47.8	47.8	63.6	.	60.9	60.9	72.2	.	.	.	76.2	76.2
ENGINEER	45.0	.	57.1
NANYUKI	40.0	42.5	50.0	65.0	46.7	69.8	70.8	63.6	80.0	40.8	80.0	80.0
NYAHURURU	39.1	50.0	56.2	63.8	67.5	38.3	60.0
MARIAKANI	50.0	60.0	60.0	60.0	63.3	70.0	70.0	70.0	80.0	80.0	.	.
KALOLENI	50.0	60.0	60.0	60.0	63.3	70.0	70.0	80.0	80.0	80.0	.	.
MALINDI	70.6	75.0	68.2	72.2	76.4	78.2	60.0	75.0	70.0	80.0	80.0	75.0
KIBAUNI KILIFI	60.0	60.0	65.0	53.3	66.7	70.0	68.0	68.0	70.0	80.0	.	.
UKUNDA	50.0	.	50.0	63.0	68.0
MWEMBE TAYARI	60.0	48.0
MACKINON	.	.	65.0	62.0	65.0	70.0	70.0
SEGA	55.0
KONGOWEA	70.0	55.0
GARSEN	50.0	55.0	60.0	60.0	60.0	70.0	65.0
RUNYENJES	45.0	41.3	68.8	55.0	57.5	30.0	80.0
EMBU TOWN	40.0	40.0	50.0	56.7	60.0	50.0	.	70.0	90.0	55.0	.	.
SIKAGO	40.0	42.5	50.0	55.0	53.6	66.8	.	20.0	41.4	90.9	81.8	71.4
MWINGI	40.0	40.0	50.0	60.0	50.0	.	.	.	56.0	.	.	.
MIGGWAINI	.	.	40.0	55.0	55.0	55.0	.	.	63.0	70.0	.	.
KALUNDU	50.0	58.0	70.0
MACHAKOS TOWN	55.0	45.0	45.0	70.0	47.7
TALA	27.0	40.0	40.0	55.7	57.1	.	.	70.0	70.0	68.0	70.0	70.0
MAUA	.	.	62.5	67.8	47.5	.	.	81.3	81.3	81.5	90.0	90.0
KIANJAI	.	.	50.0	56.7	50.0	.	.	66.7	.	83.3	.	35.1
GAKOROMERE	36.4	40.9	55.0	36.7	49.6	.	60.6	.	.	63.6	75.0	.
WOTE	50.0	52.5	60.0	63.0	64.5	61.5	.	.	65.0	65.0	80.0	80.0
GARISA TOWN	.	.	66.7	.	70.8
DARAJA MBILI	40.9	54.6	46.4	61.4	48.9	39.1	41.1	50.0	56.8	50.0	50.0	.
KIBIRIGO	.	45.5	47.6
NYANGUSU	28.6	.	42.9	.	.	54.6	.	36.4
RIOCHANDA	.	46.2	54.6
NYABITE	.	42.3	54.6
MOGONGA	38.1	36.4	.	.	.	54.6
NYAMACHE	27.3	47.6	40.2	.	.	52.3
KIBUYE	.	65.9	68.2	68.2	72.7	59.5	45.5	.
AHERO	61.9	61.9	72.5	52.4	56.8	.
KIBOSWA	.	77.3	47.7	72.7	59.1	68.2	45.5	.
SONDU	52.4	52.4	.	.	54.6	59.1	45.5	.
BONDO	.	85.0	85.0	69.2	85.0	87.5	80.0	80.0	80.0	90.0	.	.
SIAYA	54.6	53.0	90.9	81.8	90.9	.
NGIYA	47.2	54.6	68.2	90.9	68.2	.
UNGUNJA	45.5	52.3	51.1	72.7	63.6	68.2	.
OYUGIS	.	66.4	71.4
KEHACHA	.	54.6	68.2	66.7	59.1	54.6
KABARNET	50.0	50.0	50.0	59.6	72.3	75.0	75.0	60.0	37.5	75.0	.	.
NAKURU TWON	52.2	38.9	38.9	51.1	36.1	38.9	33.3	33.3	33.3	33.3	66.7	66.7
KAPSABET	.	71.4	68.2	72.7	71.0	60.9	46.5	68.2	72.7	72.7	68.2	.
KITALE	.	54.1	54.6	68.2	74.4	68.2	49.5	57.1	54.6	.	.	.
ELDORET	59.1	43.2	68.2	75.2	78.0	63.0	62.5	62.5	70.0	65.0	65.0	70.0
BURN FOREST	68.2	68.2	60.9
TURBO	42.5	53.8	.	70.0	73.8	67.0	53.0	50.0	50.0	50.0	65.0	67.5
KIPKAREN	45.5	54.6	54.6	68.2	62.5	60.6	37.0	54.6	60.0	63.6	63.6	63.6
KAJIADO TOWN	60.0	70.0	80.0	36.0	67.5	66.7	50.0	60.0	70.0	80.0	80.0	80.0
BUNGOMA TOWN	47.6	61.9	68.2	.	60.6	64.8	65.2	52.4	70.0	70.0	70.0	70.0
KIMILILI	.	.	.	46.7	67.1	66.7	80.0	60.0	70.0	57.5	65.0	60.0
KAPSOKWONY	.	40.5	47.0
BUTERE	55.8	56.5	50.8	73.9	70.5	50.3	.	54.6	68.2	68.2	.	.
KAKAMEGA	54.6	68.2	59.1	50.0	36.4	.	59.1	59.1	63.6	.	.	.
MUMIAS	.	.	.	70.5	70.1	58.4	.	50.0	68.2	38.1	40.0	.
MUNDETA	71.4	71.4	71.4	71.4	61.9	61.9	.	71.4	71.4	83.3	71.4	.
CHEPTULA	65.0	71.4	71.4	71.4	71.4	71.4	71.4	76.2	76.2	83.3	76.2	.
Mbale	.	65.2	.	.	71.4	64.3	.	71.4	71.4	76.2	76.2	.
KAWANGWARE	45.0	50.0	60.0	68.0	70.0	72.7	53.1	80.0	80.0	86.4	90.5	90.5
BURMA	45.0	50.0	50.0	60.0	70.0	80.0	80.0	81.8	.	83.3	83.3	75.0
KIKOMBA	48.0	50.0	60.0	65.0	80.0	75.0	83.3	88.9	88.9	86.0	88.9	81.8
KANGEMI	45.0	55.0	65.0	70.0	75.0	80.0	80.0	80.0	85.7	85.7	90.5	90.5
KOROKOCHO	43.5	45.0	50.0	62.5	62.5	72.7	72.7	90.0	90.0	87.0	87.0	79.2
TOI	47.6	50.0	63.6	72.7	76.2	76.2	76.2	85.7	85.7	85.7	90.5	90.5
Overall Average Prices	50.1	52.9	56.8	60.9	64.2	63.3	60.3	66.0	68.7	69.8	72.3	69.1

Table 8(c): Average Monthly Retail Prices for Dry Beans Prices (2009)

Beans prices 2009								
Market	JAN	FEB	MAR	APR	MAY	JUNE	JULY	AUG
KIAMBU	80	80	.	.	62.5	57.725	54.285	.
LIMURU	80	80	.	.	70	75	75	.
MUTHITHI	75	75	75	75	75	.	.	.
MUKUYU	63.64	76.19	46.365	76.19	72.73	68.18	.	.
KIRIAINI	69.57	69.57	.	71.43	61.9	69.805	.	.
NANYUKI	100	88.89	77.975	100	88.89	100	88.89	88.89
SIPILI	60	60	60	70
MARIAKANI	80
KALOLENI	80
MALINDI	75	80	70	80	70	.	.	.
KIBAUNI KILIFI	80
GARSEN	70	.	80	80	70	.	.	.
RUNYENJES	80	85	85	85	80	60	60	.
EMBU TOWN	80	80	85	50.91	90	60	60	.
SIAKAGO	71.43	76.19	80.95	95.12	70.13	66.67	71.43	70
MIGWANI	.	84.21	80	80	55	58	70	.
MACHAKOS TOWN	.	75	75	75	78.95	75	70	.
TALA	62
MWENDANTU	63.64	63.64	59.09	70	54.55	54.55	60	.
WOTE	60	60	60	80	.	65	65	.
GARISSA TOWN	66.67	70.59
DARAJA MBILI	52.17	54.55	59.09	59.09	45.45	45.45	.	.
BONDO	97.5	100
KABARNET	60	65	65	70	70	.	.	.
KAPSABET	65.22	65.22	69.57	80.95	68.18	71.43	.	.
KITALE	72.73	63.64	68.18	68.18	68.18	68.18	50	54.55
ELDORET	67.5	70	70	70	75	65	63.64	59.09
TURBO	72.5	65	70	65	67.5	65	60	55
KIPKAREN	63.64	63.64	57.5	60	60	60	45.45	54.55
KAIADO TOWNSHIP	.	.	.	80
BUNGOMA TOWN	59.09	.	63.64	70	72.5	70	70	65
KIMILILI	65	40	.
KAPSOKWONY	75	75	.	.
MUDETE	76.19	80.95	85.71	80.95	76.19	.	.	.
CHEPTULU	76.19	80.95	85.71	85.71	61.9	.	.	.
MBALE	76.19	76.19	85.71	85.71	66.67	.	.	.
KAWANGWARE	90	85.71	90	90.48	90.48	90.91	90.91	90.91
BURMA	80	100	100	81.63	72.73	81	85	85
KIKOMBA	75	80	80	80	66.67	80	80.95	81.665
KANGEMI	85.71	85.71	80	72.725	90	90.48	92.86	90.48
KOROGOCHO	83.33	77.27	80.95	66.67	77.78	81.82	80.95	84.09
KIBERA(TOI)	95.24	90.91	95.24	95.24	90.48	90	85.71	90.48
Average	74.2	76.0	74.7	76.6	71.7	70.7	69.1	74.6

Source: Kenya National Bureau of Statistics

. Data not available

Table 9: Export of Coffee, Tea and Horticultural Produce

Month	COFFEE *		TEA		HORTICULTURE	
	QUANTITY	VALUE	QUANTITY	VALUE	QUANTITY	VALUE
	(MT)	(KSh. Million)	(MT)	KSh. Million	(MT)	KSh. Million
Aug-08	3,094.6	759.0	33,043.3	5,811.1	13,996	3,997
Sep-08	3,348.0	805.0	24,829.6	4,986.1	14,928	3,524
Oct-08	2,774.5	718.2	31,955.8	6,400.4	15,579	3,968
Nov-08	3,421.2	909.6	28,369.5	5,140.0	14,740	4,029
Dec-08	2,680.4	648.2	39,089.5	6,251.1	14,027	4,040
Jan-09	4,096.6	1,013.7	34,946.6	6,138.5	16,272	4,943
Feb-09	4,308.8	1,200.0	27,198.9	5,110.6	16,479	4,529
Mar-09	5,265.0	1,458.3	28,461.7	5,473.3	17,994	4,808
Apr-09	5,964.4	1,529.9	21,372.2	4,238.0	15,197	4,055
May-09	7,252.1	1,832.5	23,390.9	4,484.8	15,619	4,080
Jun-09	6,920.6	1,784.2	27,054.1	5,516.6	15,013	4,187
Jul-09	5,872.4	1,427.9	29,981.7	6,546.5	14,545	3,555
Aug-09	-	-	-	-	12,771	3,318

Source: Kenya Revenue Authority

- Figures not available

*Unroasted Coffee

Table 10: Monthly Exports of Horticultural Products

Months	CUT FLOWERS				FRUITS				VEGETABLES			
	2008**		2009**		2008**		2009**		2008**		2009**	
	QUANTITY (MT)	VALUE (KSh. Million)	QUANTITY (MT)	VALUE (KSh. Million)	QUANTITY (MT)	VALUE (KSh. Million)	QUANTITY (MT)	VALUE (KSh. Million)	QUANTITY (MT)	VALUE (KSh. Million)	QUANTITY (MT)	VALUE (KSh. Million)
January	8,494.94	5,288.07	7,842.90	3,311.00	533.40	63.05	2,382.74	370.06	7,524.88	1,332.79	6,046.51	1,261.91
February*	10,178.52	6,806.08	8,204.71	2,964.04	1,431.75	111.22	2,624.70	238.52	7,290.64	2,802.23	5,650.04	1,326.09
March	9,116.38	4,836.41	8,360.12	2,867.54	2,476.80	203.31	2,548.68	209.17	7,334.14	1,498.72	7,084.75	1,730.98
April	8,100.43	2,737.35	7,317.02	2,427.45	2,263.94	180.92	2,162.59	156.52	7,604.86	1,338.55	5,717.00	1,470.55
May	8,120.99	2,798.79	7,478.17	2,545.92	1,727.73	130.44	2,217.67	215.20	7,090.86	1,122.58	5,923.03	1,318.69
June	6,785.27	2,173.12	6,306.65	2,297.16	1,718.46	169.36	2,591.75	336.32	6,808.71	1,137.46	6,114.91	1,553.31
July	6,083.05	2,072.24	5,926.35	1,967.40	2,573.05	686.15	2,895.30	308.46	6,605.48	1,123.60	5,723.02	1,279.57
August	6,239.22	2,766.14	5,611.67	1,991.67	1,653.59	199.49	1,852.91	199.86	6,103.07	1,031.84	5,306.68	1,126.89
September	6,994.05	2,246.42			1,031.31	119.54			6,902.52	1,158.22		
October	8,026.54	2,596.09			484.62	56.18			7,068.08	1,315.83		
November	7,909.34	2,773.86			602.77	65.60			6,227.65	1,189.57		
December	7,604.69	2,876.41			626.40	85.97			5,796.13	1,077.50		
Total	93,653.42	39,970.99			17,123.82	2,071.24			82,357.02	16,128.90		

Source: Horticultural Crops Development Authority

- data not available

** Figures subject to revision

Table 11: Kenya's External Trade, March 2008 – March 2009

KSh million						
MONTH	Domestic Exports	Re-Exports	Total Exports	Total Imports	Volume of Trade	Home use Imports
2008						
July	28,667.31	1,671.58	30,338.89	70,300.09	100,638.98	60,557.64
August	27,487.90	2,265.53	29,753.42	72,644.67	102,398.09	72,423.12
September	26,618.40	1,869.18	28,487.58	74,773.03	103,260.61	67,656.83
October	29,556.05	2,984.15	32,540.20	74,855.83	107,396.03	75,450.09
November	27,434.29	1,624.36	29,058.65	68,387.90	97,446.55	66,706.10
December	27,405.44	1,938.39	29,343.83	68,567.89	97,911.72	67,312.92
2009						
January	26,120.79	1,238.96	27,359.75	66,177.18	93,536.93	2,707.33
February	27,362.15	1,314.05	28,676.20	60,563.13	89,239.33	60,327.13
March	29,123.55	2,346.16	31,469.71	61,296.80	92,766.51	61,697.58
April	25,206.94	1,141.33	26,348.27	65,799.21	92,147.47	63,773.78
May	24,525.44	1,252.84	25,778.27	58,699.61	84,477.89	58,058.37
June	26,870.74	1,295.50	28,166.23	62,910.79	91,077.02	56,936.72
July	28,362.04	3,171.01	31,533.06	63,738.10	95,271.15	66,681.97

Source: Customs Department

* Provisional

Table 12: Major Destinations of Domestic Exports, July 2008 – July 2009

KSh Million											
Month	Uganda	Tanzania	United Kingdom	Pakistan	Netherlands	Egypt	Germany	Rwanda	USA	United Arab Emirates	France
2008											
July	3,810.84	2,371.58	3,187.84	2,042.81	1,692.87	990.34	372.82	792.28	1,590.02	522.07	525.91
August	3,031.60	2,402.28	2,934.22	1,264.65	1,650.31	1,483.11	301.43	947.01	2,231.04	416.56	434.38
September	3,170.79	2,493.71	2,961.86	973.01	1,812.64	1,148.08	539.78	729.96	1,911.48	435.57	441.95
October	3,614.23	2,511.91	3,603.99	1,115.82	2,533.31	1,645.78	640.78	917.09	1,654.79	539.40	447.12
November	3,011.92	2,335.70	3,053.52	1,050.66	2,136.05	1,230.38	474.03	545.11	1,883.01	385.11	314.50
December	3,504.30	2,191.03	2,920.00	1,504.05	2,178.31	1,902.93	533.73	581.25	1,779.29	448.55	341.86
2009											
January	3,361.59	2,369.01	2,961.80	2,071.33	2,468.70	916.17	730.97	664.56	1,158.51	482.26	405.98
February	4,032.20	1,841.43	3,172.60	1,265.17	2,527.16	847.16	662.15	692.77	1,742.88	581.83	489.42
March	3,449.74	2,198.30	3,375.02	752.59	2,447.81	1,183.77	547.99	586.57	1,742.15	809.17	476.02
April	3,366.66	2,242.99	2,924.13	953.92	2,001.06	776.69	726.14	619.99	1,249.87	773.67	303.27
May	3,249.01	1,926.56	2,479.75	916.14	1,944.80	740.65	653.81	697.85	1,803.13	479.58	303.17
June	3,050.70	2,418.71	3,070.09	1,206.77	2,147.88	856.25	609.77	676.43	1,594.35	627.36	334.38
July	3,311.21	2,666.84	3,488.47	1,567.72	2,256.30	1,122.25	578.47	814.96	1,408.62	611.95	356.02

Source: Customs Department

Table 13: Major Origins of Imports, July 2008 – July 2009

KSh Million											
Month	United Arab Emirates	United Kingdom	South africa	Saudi Arabia	Japan	India	USA	Germany	Netherlands	France	China
2008											
July	19,339.13	1,774.91	3,886.96	2,048.11	4,811.18	7,921.31	2,628.53	2,189.02	652.05	1,156.11	4,678.81
August	6,507.93	2,568.88	3,314.31	2,488.28	4,062.72	10,098.94	1,876.34	2,707.15	1,545.58	1,007.23	4,869.16
September	12,326.45	1,873.49	3,641.87	4,813.22	3,605.69	8,705.56	2,108.17	3,166.97	935.69	1,385.47	5,399.50
October	7,753.46	3,853.50	4,723.11	1,414.43	3,677.07	7,769.47	2,538.19	2,402.06	921.52	1,470.71	6,774.62
November	5,247.67	2,601.72	7,604.02	996.78	3,517.57	9,794.27	2,183.26	2,651.44	1,781.43	1,655.30	7,194.15
December	6,637.34	3,015.16	3,829.78	3,147.95	4,773.55	6,200.32	1,739.14	2,519.94	1,349.98	2,548.16	7,327.06
2009											
January	3,314.77	2,370.63	4,112.81	1,966.25	4,521.63	6,572.44	8,392.77	2,255.11	1,962.77	1,530.99	5,802.14
February	5,641.51	2,059.46	4,738.94	2,806.33	2,265.48	5,370.46	2,125.21	1,553.16	2,826.51	1,566.75	6,344.45
March	5,790.29	2,363.74	8,614.62	1,473.44	3,076.06	5,663.38	4,230.35	2,198.25	1,826.88	1,791.77	5,493.90
April	2,643.10	3,980.97	6,091.41	2,240.58	3,551.89	8,341.77	4,045.56	1,700.95	2,107.65	1,595.81	7,017.61
May	3,406.21	2,088.03	5,313.96	2,857.00	4,694.47	5,937.40	3,862.26	1,550.39	986.32	990.15	4,650.28
June	9,904.70	566.67	6,582.05	1,934.44	3,766.78	6,853.21	2,147.36	1,683.50	759.11	1,038.13	6,087.92
July	6,394.50	4,880.77	8,634.42	1,233.76	3,673.80	4,957.91	3,412.89	1,813.99	1,704.13	971.00	6,658.65

Source: Customs Department

Table 12 (a): Domestic Exports by Broad Economic Category

DESCRIPTION	2007	2008						2009							
	Total	July	August	September	October	November	December	Total	January	February	March	April	May	Jun	July
FOOD AND BEVERAGES	105,765	12,300	10,468	9,804	11,967	10,732	11,103	129,916	11,440	10,534	11,986	10,534	10,573	9,507	10,414
INDUSTRIAL SUPPLIES (Non-Food) ..	66,441	8,659	10,001	8,904	8,833	8,429	7,332	92,204	6,688	8,272	8,076	6,696	6,323	7,144	7,367
FUEL AND LUBRICANTS	9,346	268	45	423	468	523	607	5,949	6,688	8,272	8,076	6,696	295	355	367
MACHINERY & OTHER CAPITAL EQUIPMENT ..	4,427	324	323	316	473	300	729	5,546	386	319	277	172	599	745	572
TRANSPORT EQUIPMENT	3,472	385	260	264	300	406	304	3,657	588	351	539	701	371	298	398
CONSUMER GOODS NOT ELSEWHERE SPECIFIED ..	72,161	6,730	6,387	6,904	7,513	7,041	7,323	85,724	317	537	505	704	6,365	6,837	7,302
GOODS NOT ELSEWHERE SPECIFIED ..	7	0	4	3	2	3	7	32	6,701	7,347	7,723	6,399	0	1,985	1,941
TOTAL	261,619	28,666	27,488	26,618	29,556	27,434	27,405	323,029	32,808	35,632	37,182	31,902	24,525	26,871	28,362
PERCENTAGE SHARES:															
Food and Beverages	40.43	42.91	38.08	36.83	40.49	39.12	40.51	40.22	34.87	29.56	32.24	33.02	43.11	35.38	36.72
Industrial Supplies (Non-Food)	25.40	30.21	36.38	33.45	29.89	30.72	26.75	28.54	20.39	23.22	21.72	20.99	25.78	26.59	25.98
Fuel and Lubricants	3.57	0.93	0.16	1.59	1.58	1.91	2.21	1.84	20.39	23.22	21.72	20.99	1.20	1.32	1.30
Machinery and other Capital Equipment ..	1.69	1.13	1.18	1.19	1.60	1.09	2.66	1.72	1.18	0.90	0.74	0.54	2.44	2.77	2.02
Transport Equipment	1.33	1.34	0.95	0.99	1.02	1.48	1.11	1.13	1.79	0.99	1.45	2.20	1.51	1.11	1.40
Consumer Goods not elsewhere specified	27.58	23.48	23.24	25.94	25.42	25.67	26.72	26.54	0.97	1.51	1.36	2.21	25.95	25.44	25.75
Goods not elsewhere specified	0.00	0.00	0.01	0.01	0.01	0.01	0.03	0.01	20.42	20.62	20.77	20.06	0.00	7.39	6.84
TOTAL	100	100	100	100	100	100	100	100	100	100	100	100	100	100	100

Source: Annual Trade Report - Customs & Excise Dept.

* Provisional

Table 13 (a): Imports by Broad Economic Category

Million KSh

DESCRIPTION	2007							2008							2009						
	Total	July	August	Sept	Oct	Nov	Dec	Total	January	February	March	April	May	Jun	Jul						
FOOD AND BEVERAGES	42,483.1	2,258.0	3,393.0	4,125.0	6,822.0	9,198.0	5,005.0	53,409.4	4,342.0	3,980.0	8,649.0	8,897.0	8,606.8	7,111.0	6,386.3						
INDUSTRIAL SUPPLIES (Non-Food) ..	193,819.3	19,453.0	20,072.0	21,890.8	25,880.0	23,454.0	20,522.0	237,249.7	21,518.0	15,694.9	19,422.0	17,858.0	18,456.5	18,433.2	19,026.1						
FUEL AND LUBRICANTS	126,911.2	25,978.0	23,492.0	23,862.3	17,980.0	11,433.0	11,423.0	205,859.5	21,518.0	15,694.9	19,422.0	17,858.0	11,377.8	15,496.3	11,691.2						
MACHINERY & OTHER CAPITAL EQUIPMENT ..	97,336.5	9,921.0	9,434.0	13,646.9	10,559.0	11,112.0	18,743.0	127,118.9	10,104.0	11,012.5	9,890.0	14,352.0	10,425.9	9,977.9	11,496.2						
TRANSPORT EQUIPMENT	97,427.0	8,018.0	11,963.0	4,487.0	8,263.0	7,855.0	7,812.0	86,574.9	11,035.0	12,177.0	10,300.0	11,234.0	5,946.2	7,251.2	8,421.1						
CONSUMER GOODS NOT ELSEWHERE SPECIFIED ..	44,883.8	4,375.0	4,078.0	4,688.4	5,273.0	5,309.0	4,899.0	53,464.3	13,396.0	9,339.6	7,613.0	8,646.0	3,686.9	4,466.8	4,332.3						
GOODS NOT ELSEWHERE SPECIFIED ..	2,259.7	0.0	213.0	207.0	79.0	27.0	164.0	903.4	5,731.0	5,352.0	4,975.0	4,811.0	199.6	174.4	2,384.8						
TOTAL	605,120.6	70,003	72,645	74,773	74,856	68,388	68,568	764,580.2	87,644.0	73,250.9	80,271.0	83,656.0	58,699.6	62,910.8	63,738.1						
PERCENTAGE SHARES:																					
Food and Beverages	7.02	3.23	4.67	5.52	9.11	13.45	7.30	6.99	4.95	5.43	10.77	10.64	14.66	11.30	10.02						
Industrial Supplies (Non-Food)	32.03	27.79	27.63	29.28	34.57	34.30	29.93	31.03	24.55	21.43	24.20	21.35	31.44	29.30	29.85						
Fuel and Lubricants	20.97	37.11	32.34	31.91	24.02	16.72	16.66	26.92	24.55	21.43	24.20	21.35	19.38	24.63	18.34						
Machinery and other Capital Equipment ..	16.09	14.17	12.99	18.25	14.11	16.25	27.33	16.63	11.53	15.03	12.32	17.16	17.76	15.86	18.04						
Transport Equipment	16.10	11.45	16.47	6.00	11.04	11.49	11.39	11.32	12.59	16.62	12.83	13.43	10.13	11.53	13.21						
Consumer Goods not elsewhere specified	7.42	6.25	5.61	6.27	7.04	7.76	7.14	6.99	15.28	12.75	9.48	10.34	6.28	7.10	6.80						
Goods not elsewhere specified	0.37	0.00	0.29	0.28	0.11	0.04	0.24	0.12	6.54	7.31	6.20	5.75	0.34	0.28	3.74						
TOTAL	100.00	100.00	100.00	97.50	100.00	100.00	100.00	100.00	100.00	100.00	100.00	100.00	100.00	100.00	100.00						

Source: Annual Trade Report - Customs & Excise Dept.

* Provisional

Table 14(a): Local Electricity Generation by Source

MONTH	HYDRO	GEO - THERMAL	THERMAL	TOTAL
Jun-08	252.63	87.74	122.54	462.91
Jul-08	250.97	88.33	140.72	480.02
Aug-08	269.21	80.39	132.15	481.75
Sep-08	257.53	78.51	121.65	457.69
Oct-08	268.32	85.26	122.15	475.73
Nov-08	262.30	85.44	113.45	461.18
Dec-08	252.08	106.72	112.42	471.22
Jan-09	231.75	116.58	127.48	475.81
Feb-09	215.16	99.77	113.16	428.09
Mar-09	237.11	106.07	129.83	473.01
Apr-09	202.51	112.73	128.07	443.31
May-09	212.16	107.77	135.56	455.49
Jun-09	189.95	111.41	139.69	441.05

Source: KPL&C

Fig 9: Electricity Generation by Source

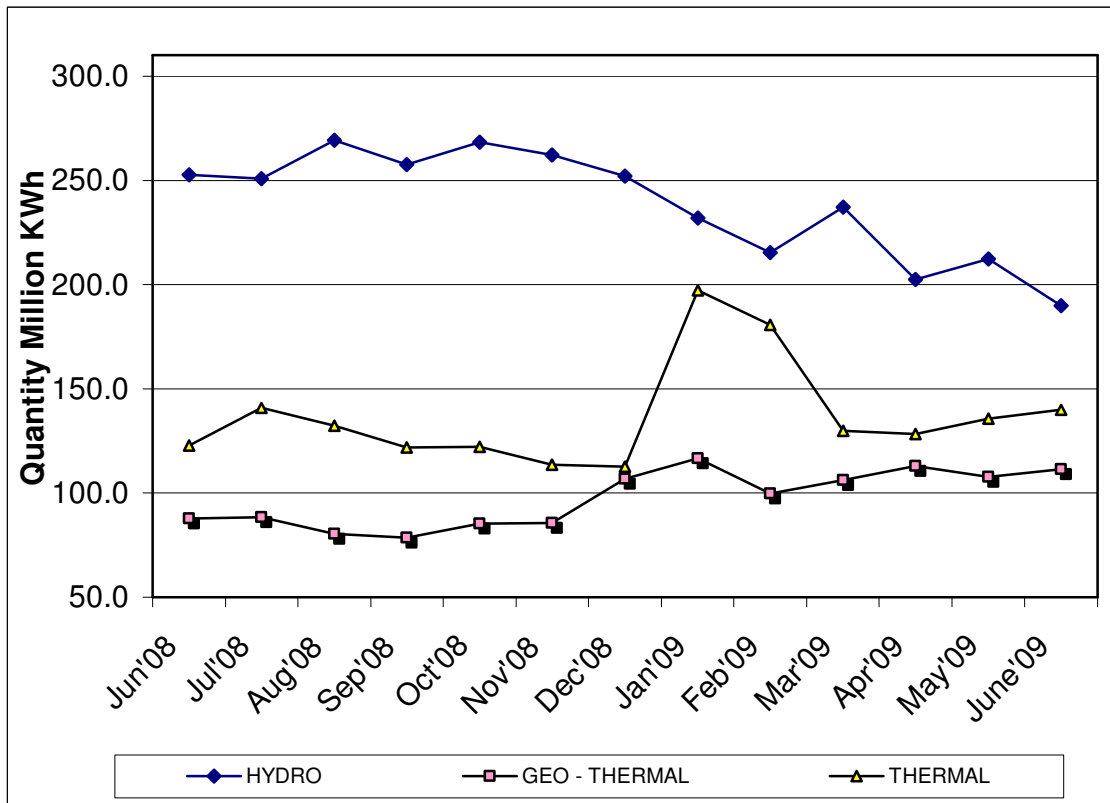


Table 14(b): Generation and Consumption of Electricity

Month	GENERATION						CONSUMPTION**					
	LOCAL GENERATION	IMPORTS			EPPS (Aggreko)	TOTAL GENERATION	TOTAL KPLC SALES	RURAL ELECTRIFICATION	EXPORTS TO UGANDA	TOTAL DOMESTIC CONSUMPTION	POWER LOSSES	
		UGANDA	TANZANIA	Total Imports								
2008*												
June	462.9	1.7	0.11	1.8	73.6	538.3	444.1	21.2	3.64	465.3	-69.4	
July	480.0	2.2	0.12	2.4	82.4	564.8	402.5	18.2	3.59	420.7	-140.5	
August	481.8	1.7	0.11	1.8	77.6	561.1	448.1	19.1	2.14	467.2	-91.8	
September	457.7	2.1	0.10	2.2	75.5	535.4	427.8	19.0	2.27	446.8	-86.4	
October	475.7	2.3	0.11	2.4	75.5	553.7	423.9	18.9	3.07	442.8	-107.8	
November	461.2	3.0	0.10	3.1	75.5	539.9	429.3	20.3	3.05	449.6	-87.2	
December	471.2	2.6	0.10	2.7	62.3	536.2	404.8	17.6	2.31	422.3	-111.6	
2009												
January	475.8	2.6	0.09	2.7	69.8	548.3	432.1	20.6	2.20	452.7	-93.4	
February	478.1	1.7	0.08	1.8	67.6	547.4	418.0	19.8	2.63	437.8	-107.0	
March	473.0	1.9	0.09	2.0	75.2	550.2	394.7	19.4	2.41	414.1	-133.7	
April	475.7	1.1	0.10	1.2	77.8	554.7	417.9	19.8	2.11	437.7	-114.9	
May	455.5	1.6	0.11	1.7	89.2	546.5	417.9	20.5	2.40	438.4	-105.7	
June	441.1	1.7	0.11	1.8	85.8	528.7	417.9	21.2	2.46	439.1	-87.1	

NB: Difference between amount purchased from KENGEN and imported from Uganda and consumption reflect transmission, distribution and commercial losses

*Provisional

** Excludes exports

Fig 10: Electricity Generation Consumption and Power Losses

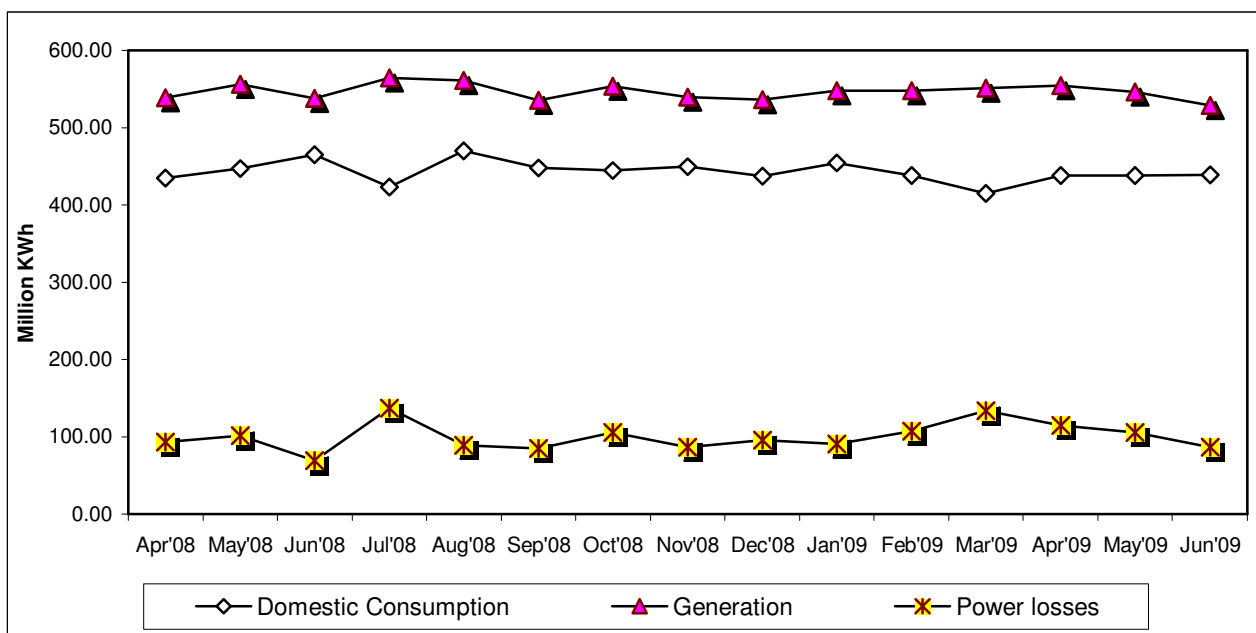


Table 14 (c): Consumption of Petroleum Fuels

									'000 MT
PERIOD	LIGHT DIESEL OIL	JET FUEL	FUEL OILS	MOTOR SPIRIT	ILLUMINATING KEROSENE	HEAVY DIESEL OIL	L.P.G.	AVIATION GASLENE	TOTAL FUELS
June	85.5	40.2	42.8	26.1	19.8	1.9	5.1	0.11	221.6
July	95.6	46.9	38.4	30.5	22.0	2.1	21.7	0.46	257.6
August	104.0	49.5	57.1	27.5	20.7	2.3	5.1	0.17	266.5
September	79.4	48.2	42.4	29.4	15.2	2.1	5.3	0.17	222.1
October	76.9	47.8	42.8	27.4	17.8	2.0	6.5	0.19	221.4
November	92.7	45.1	42.3	28.7	19.2	2.2	5.2	0.11	235.5
December	94.5	46.6	58.6	33.8	26.2	3.7	4.5	0.14	268.1
2009									
JANUARY	107.6	48.7	35.9	30.0	22.0	1.4	4.8	0.12	250.6
FEBRUARY	90.4	40.8	40.6	29.3	20.5	1.6	5.2	0.08	228.5
MARCH	91.8	48.5	41.0	36.1	23.6	1.8	4.5	0.19	247.5
APRIL	101.8	43.6	35.0	34.8	28.7	1.1	4.0	0.16	249.1
MAY	87.9	44.0	32.1	31.7	24.1	1.5	5.6	0.11	227.0
JUNE	92.3	46.8	37.9	33.5	25.4	1.9	4.4	0.13	242.3

Source : Ministry of Energy

* Sales from major oil marketing firms only

Table 14 (d): Weighted Average Retail Prices for Selected Fuel Products within Nairobi

PERIOD	KSh per litre			
	MOTOR GASOLINE PREMIUM	MOTOR GASOLINE REGULAR	LIGHT DIESEL OIL (GASOIL)	ILLUMINATING KEROSENE
Aug-08	108.20	103.32	103.10	88.49
Sep-08	104.56	101.02	101.48	88.07
Oct-08	100.36	98.16	97.73	85.56
Nov-08	94.83	93.27	86.94	82.61
Dec-08	83.53	77.07	72.19	67.47
Jan-09	84.52	81.73	75.57	68.00
Feb-09	81.69	80.60	73.94	65.94
Mar-09	80.64	79.41	72.59	63.26
Apr-09	79.79	77.62	70.11	60.25
May-09	77.88	76.23	66.11	58.27
Jun-09	78.94	77.48	67.26	57.99
Jul-09	81.22	78.43	72.19	59.57
Aug-09	81.70	79.73	72.52	59.58

Source : Kenya National Bureau of Statistics

Fig 11(a): Average Retail Prices of selected Petroleum Products

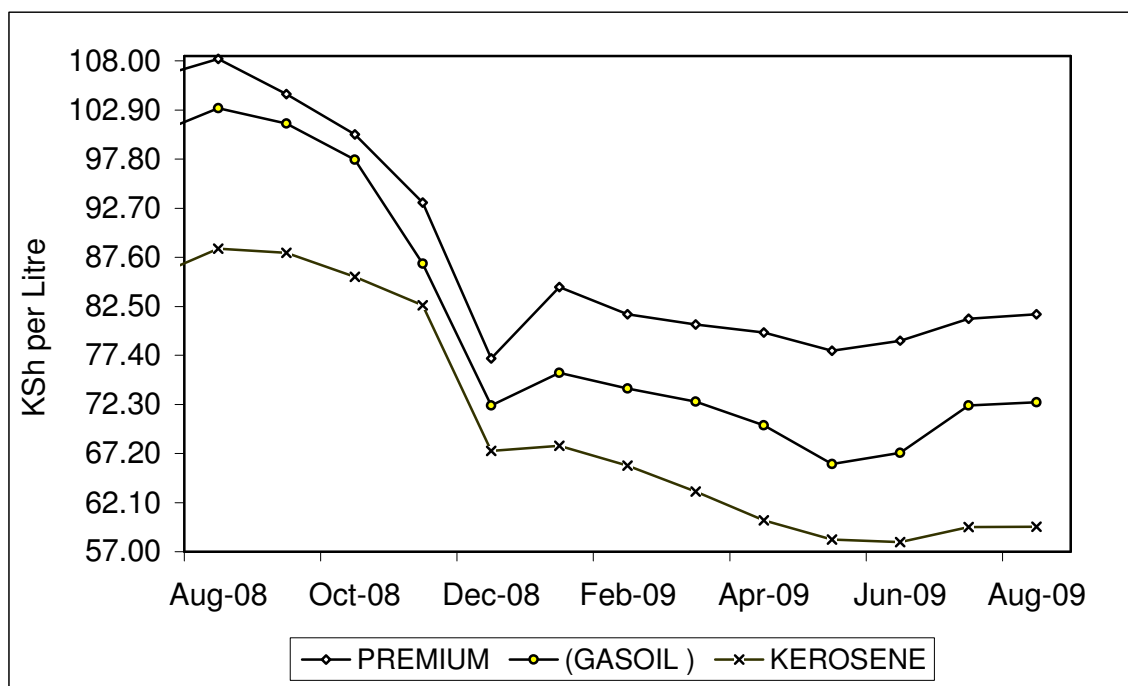


Table 14 (e): Weighted Average Retail Prices for Selected Fuels in Kenya

PERIOD	MOTOR GASOLINE PREMIUM (KSh Per Litre)	MOTOR GASOLINE REGULAR (KSh per Litre)	LIGHT DIESEL OIL, GASOIL (KSh per Litre)	ILLUMINATING KEROSENE (KSh per Litre)	L.P.G (KSh per 13Kg)	Charcoal (KSh per 4 Kg Tin)
Jul-08	103.30	102.45	97.68	80.95	1,802.58	35.73
Aug-08	105.90	104.18	100.90	84.95	1,807.43	35.95
Sep-08	106.85	103.89	100.77	84.52	1,816.06	36.59
Oct-08	102.12	101.09	98.09	82.61	1,827.09	36.95
Nov-08	98.12	96.07	90.62	81.11	1,827.09	37.45
Dec-08	86.16	83.61	77.54	71.10	1,845.46	37.56
Jan-09	84.52	81.73	75.57	68.00	1,681.74	39.72
Feb-09	81.69	80.60	73.94	65.94	1,535.24	41.02
Mar-09	80.64	79.41	72.59	63.26	1,488.15	39.70
Apr-09	79.79	77.62	70.11	60.25	1,456.63	38.10
May-09	77.88	76.23	66.11	58.27	1,446.21	38.11
Jun-09	78.94	77.48	67.26	57.99	1,441.68	38.12
Jul-09	80.23	79.89	69.58	60.19	1,437.88	38.18
Aug-09	80.30	79.47	68.77	59.75	1,440.35	38.21

Source : Kenya National Bureau of Statistics

Fig 11(b): Weighted Average Prices for LPG in Kenya

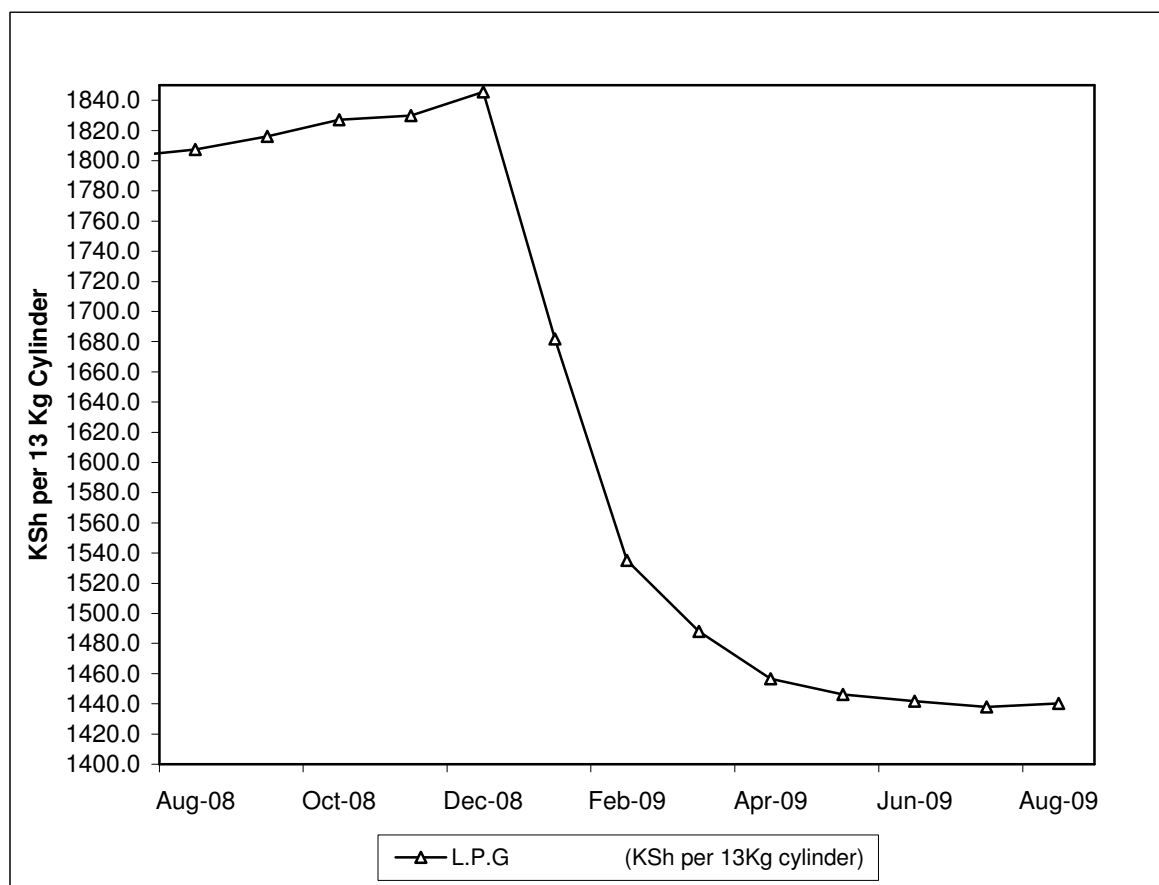


Table 14(f): Murban ADNOC Prices 2003-2008

Month/Year	US\$BBL					
	2004	2005	2006	2007	2008	2009*
January	31.05	42.10	62.15	54.85	92.25	48.85
February	30.90	44.00	60.95	58.75	95.10	44.95
March	33.15	50.95	60.85	62.10	102.20	47.55
April	33.80	52.55	67.50	67.60	109.35	45.85
May	37.05	49.80	68.50	68.40	125.75	60.15
June	35.95	55.45	68.85	69.70	134.00	71.65
July	37.35	57.10	73.00	73.70	137.35	66.95
August	41.55	60.95	72.70	71.75	117.50	72.75
September	41.39	61.05	63.25	78.55	98.05	69.10
October	42.80	58.00	59.35	81.80	69.25	
November	39.65	54.95	59.70	91.75	51.40	
December	38.50	56.90	62.05	90.60	42.10	

Source : Ministry of Energy

ADNOC : Abu Dhabi National Oil Corporation

PRICE : Abu Dhabi Free On Board (FOB)

US\$/ BBL: US Dollar per Barrel

Fig 12: Trend for Murban ADNOC Crude Oil Prices

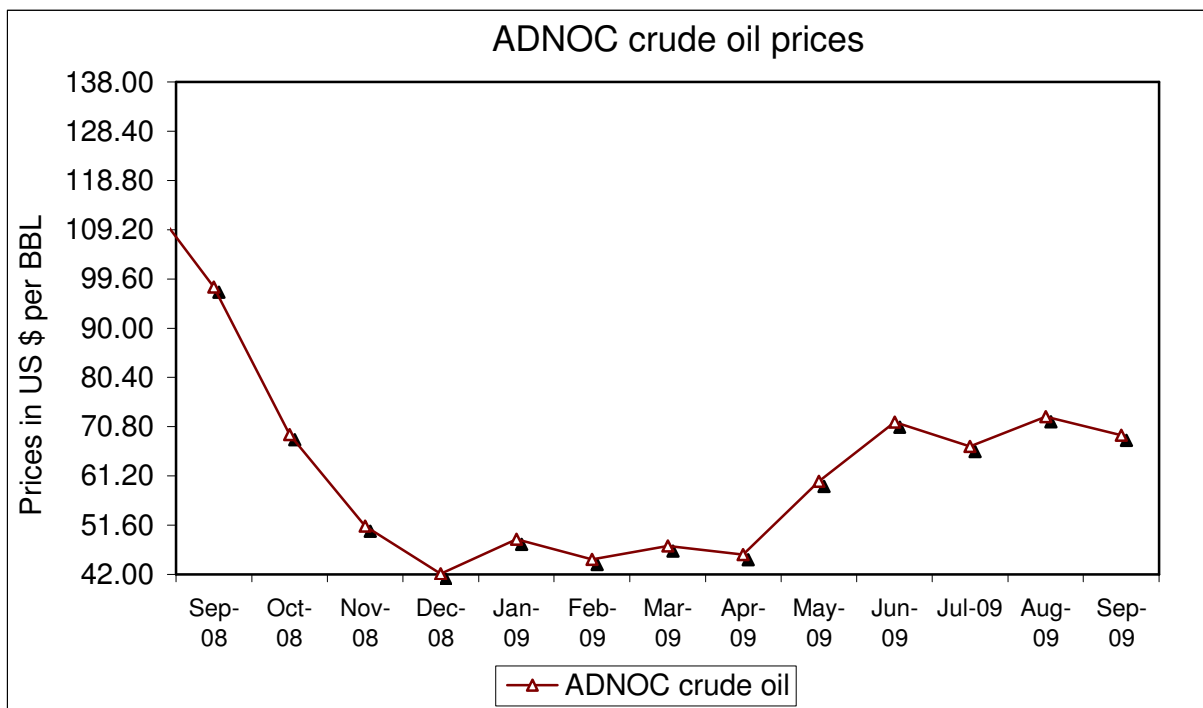


Table 15: Value of Building Plans Approved by Nairobi City Council (NCC)

KSh. Million

MONTHS	ACTUAL			REAL**		
	RESIDENTIAL	NON RESIDENTIAL	AGGREGATE ACTUAL	RESIDENTIAL	NON RESIDENTIAL	REAL AGGREGATE
2008						
June	2,008.8	1,874.8	3,883.6	38.0	33.9	71.9
July	2,417.1	1,368.1	3,785.2	45.3	24.6	69.9
August	1,961.3	1,621.5	3,582.8	36.5	29.1	65.5
September	2,144.5	1,589.7	3,734.2	39.9	28.5	68.4
October	2,729.1	1,737.1	4,466.3	50.3	30.9	81.2
November	5,514.5	1,729.2	7,243.7	101.7	31.0	132.7
December	1,976.1	2,954.8	4,930.9	36.5	52.6	89.0
2009						
January	2,356.8	5,717.5	8,074.3	43.5	101.7	145.2
February	3,686.1	2,272.9	5,959.0	68.0	40.4	108.4
March	3,960.2	2,592.6	6,552.8	73.1	46.1	119.2
April	4,020.0	2,774.3	6,794.2	73.7	48.3	122.0
May	4,226.2	2,708.9	6,935.1	77.5	47.2	124.7
June	4,700.2	2,871.7	7,571.9	86.2	50.0	136.2

Source: Nairobi City Council

** Actual deflated by relevant construction cost indices (Dec1972 =100)

Table 16(a): Domestic Production of Sugar

Month	Metric Tonnes							
	2002	2003	2004	2005	2006	2007	2,008	2009*
January	48,300	37,923	49,186	48,993	47,596	42,188	38,986	53,968
February	39,479	39,709	48,708	41,929	44,823	41,246	49,772	46,115
March	39,479	22,881	46,827	40,192	51,327	45,933	40,753	53,687
April	41,105	17,879	43,123	42,988	41,055	47,255	38,968	46,164
May	18,744	34,954	37,583	40,869	39,849	45,427	50,865	46,002
June	44,581	39,144	28,069	29,076	34,985	36,870	49,300	47,410
July	50,184	31,878	36,824	27,995	30,985	37,496	40,805	33,078
August	45,895	40,106	41,622	41,585	47,002	44,898	21,130	
September	48,752	48,302	45,438	39,003	35,173	44,396	40,567	
October	44,573	48,939	45,530	45,810	35,102	48,849	47,244	
November	35,609	43,037	45,107	42,493	34,265	44,155	46,239	
December	37,923	43,768	48,738	48,069	33,509	41,691	47,262	
Total	494,624	448,520	516,755	489,002	475,671	520,404	511,891	

*Provisional

** Revised based on Kenya Sugar Board figures.

Source: Kenya Sugar Authority

TABLE 16(b): PRODUCTION OF SOFT DRINKS

Month	Metric Tonnes							
	2002	2003	2004	2005	2006*	2007*	2008*	2009*
January	38,553	51,676	17,162	22,025	32,548	28,835	26,199	31,153
February	18,547	19,540	12,692	22,895	26,470	27,484	24,352	26,891
March	17,558	17,353	17,650	27,395	27,538	31,120	31,961	34,847
April	14,096	15,970	10,596	18,196	19,542	26,411	23,810	32,585
May	11,698	13,514	12,509	17,308	20,406	26,148	25,419	26,934
June	13,917	15,109	19,776	18,513	22,682	22,852	22,727	26,552
July	6,947	6,266	13,828	19,044	17,568	20,508	21,670	
August	10,486	10,784	12,722	15,367	20,095	21,402	23,766	
September	7,842	6,709	18,768	19,950	20,127	25,899	29,530	
October	9,980	9,102	13,863	21,965	23,774	40,067	26,953	
November	12,354	11,977	11,813	26,881	20,689	27,177	31,923	
December	20,521	22,989	14,542	27,485	27,968	30,329	53,226	
Total	182,499	200,989	175,921	257,024	279,407	328,231	341,536	

Source : Kenya National Bureau of Statistics

Table 16(c): Production of Assembled Vehicles

Month	Numbers			
	2,006	2007	2008	2009*
January	360	450	468	379
February	411	516	592	556
March	461	565	388	517
April	436	532	601	480
May	486	574	575	494
June	399	481	487	518
July	439	456	468	540
August	480	589	440	
September	477	566	488	
October	447	718	503	
November	592	658	435	
December	392	437	302	
Total	5,380	6,542	5,747	

*Provisional

TABLE 16(d): PRODUCTION OF GALVANISED SHEETS

Month	Metric Tonnes			
	2006	2007	2008	2009*
January	13,520	13,515	16,240	16,031
February	12,765	15,365	16,912	12,003
March	12,736	16,920	15,498	13,104
April	13,138	15,855	15,396	15,906
May	13,754	14,816	15,741	14,563
June	13,946	16,404	15,528	13,578
July	15,695	15,674	16,935	
August	15,180	15,921	17,166	
September	13,927	15,877	17,255	
October	13,619	16,611	15,755	
November	15,552	15,372	12,418	
December	14,914	15,930	14,477	
Total	168,746	188,260	189,321	

Source : Kenya National Bureau of Statistics

- data not available

*Provisional

Table 16(e): Cement production and Consumption
TABLE 16(e): CEMENT PRODUCTION AND CONSUMPTION

MONTHS	2007		2008		2009*	
	PRODUCTION	CONSUMPTION	PRODUCTION	CONSUMPTION	PRODUCTION	CONSUMPTION
January	196,464	135,327	178,681	133,429	247,984	200,840
February	178,706	130,918	186,508	152,133	246,746	199,701
March	215,477	164,619	213,740	175,922	270,242	191,989
April	198,779	162,976	211,728	173,832	256,389	202,344
May	214,333	178,679	254,809	200,639	275,599	217,505
June	198,002	163,622	244,128	194,627	258,793	204,242
July	236,597	190,706	267,072	203,298	248,340	200,840
August	235,786	191,609	266,905	214,606		
September	235,088	191,373	258,139	207,702		
October	206,289	191,244	260,258	183,199		
November	221,484	199,745	234,080	191,603		
December	208,656	160,582	252,751	174,799		
TOTAL	2,545,660	2,061,400	2,828,799	2,205,789		

- data not available

Source: Kenya National Bureau of Statistics

*Provisional

-: data not available

Table 16(f): Milk Intakes in the Formal Milk Sector

	litres			
Month	2006	2007	2008	2009
Jan	28,993,210	35,997,997	28,596,999	35,816,607
Feb	25,445,275	37,508,095	26,527,462	29,345,350
Mar	21,142,657	34,608,329	26,885,445	26,490,299
Apr	23,285,252	33,286,207	28,616,588	24,948,210
May	29,773,451	30,038,560	35,017,737	29,158,098
Jun	34,032,057	33,092,547	34,723,007	33,355,950
Jul	33,304,057	33,147,783	32,838,238	32,526,105
Aug	32,658,519	36,022,269	33,643,233	
Sept	32,159,974	35,186,438	35,535,725	
Oct	32,236,110	37,988,733	35,530,367	
Nov	33,925,921	39,840,842	39,359,859	
Dec	33,192,254	36,393,069	41,236,728	
Total	360,148,736	423,110,869	398,511,387	

Source: Kenya Dairy Board

FIG 13: Milk Intake in the Formal Sector

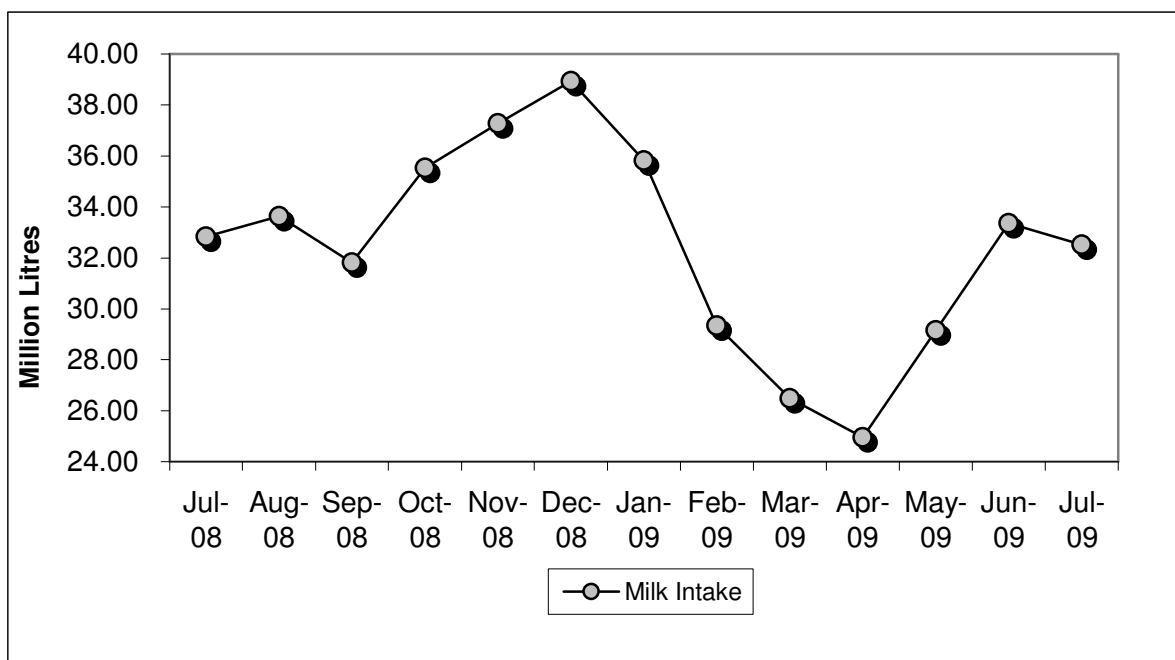


Table 17: Visitor Arrivals* through Jomo Kenyatta International Airport (J.K.I.A) and Moi International Airport (M.I.A)

MONTH	AIRPORT		Numbers
	JKIA	MIA	Visitors to Kenya
Aug-08	62,890	13,081	75,971
Sep-08	56,026	11,136	67,162
Oct-08	58,504	11,260	69,764
Nov-08	50,224	15,369	65,593
Dec-08	72,657	22,398	95,055
Total 2008	610,378	111,188	721,566
Jan-09	54,167	24,315	78,482
Feb-09	54,503	24,542	79,045
Mar-09	52,320	18,866	71,186
Apr-09	52,458	7,026	59,484
May-09	50,941	4,181	55,122
Jun-09	61,946	7,113	69,059
Jul-09	83,972	13,689	97,661
Aug-09	82,658	17,656	100,314

* Visitors arrivals exclude Kenyans
 **Provisional

FIG 14: VISITORS ARRIVING IN KENYA THROUGH THE MAIN AIRPORTS

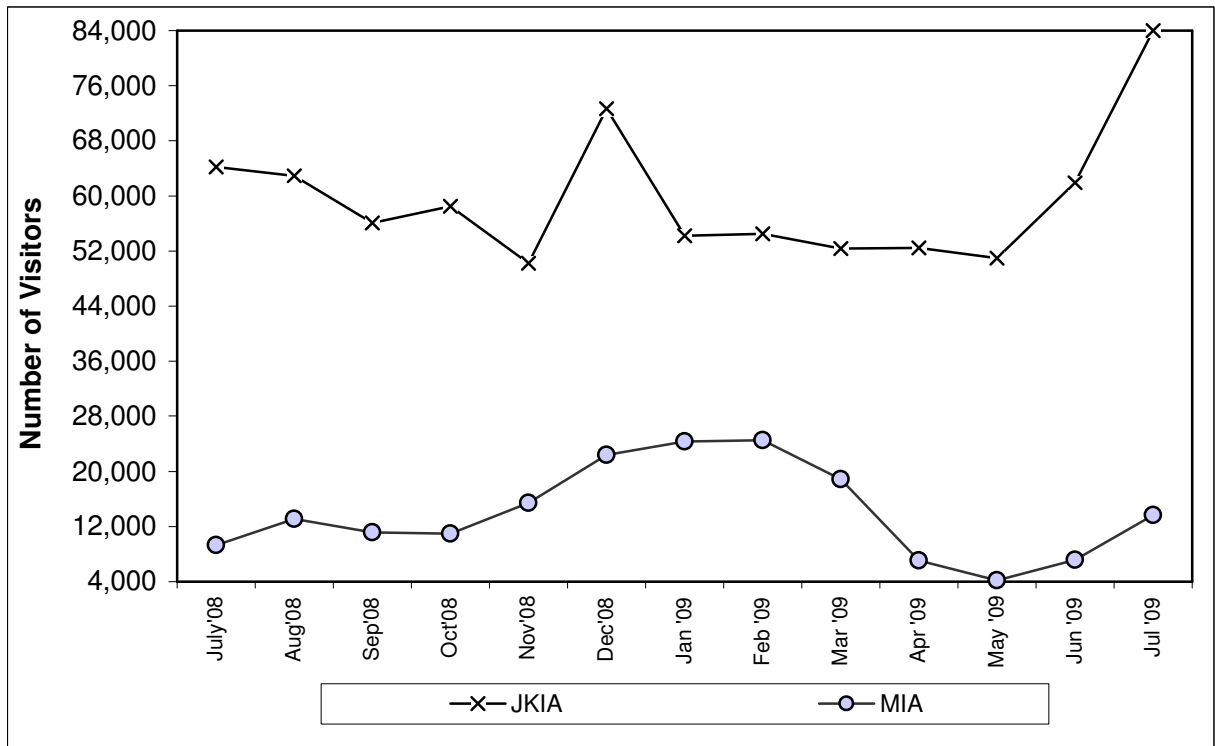


TABLE (18A): JOMO KENYATTA INT. AIRPORT INTERNATIONAL FLIGHTS ONLY- EMBARKED PASSENGERS BY PORT OF DESTINATION.

PORTS.	2007	2008								2009					
	TOTAL	June	July	Aug	Sep	Oct	Nov	Dec	TOTAL	Jan	Feb	Mar	Apr	May	Jun
ADDIS ABABA (ADD)	45,260	4,320	1,081	3,929	728	3,297	3,739	2,277	26,060	3,759	3,975	915	1,056	656	3,710
CAIRO (CAI)	26,195	2,505	3,719	2,941	2,897	2,812	2,628	3,304	28,883	902	1,367	2,677	2,086	2,351	1,902
DAR ES SALAAM (DAR)	82,939	2,684	7,073	7,353	7,244	5,555	6,655	3,704	71,240	5,278	5,667	5,870	9,027	7,514	9,797
ENTEBSBE (EBB)	119,541	11,051	10,839	11,005	10,456	10,401	10,802	9,873	122,120	9,143	8,967	9,630	9,458	9,963	1,740
HARARE (HRE)	16,880	1,186	918	1,352	1,234	1,218	1,475	1,996	15,997	1,223	1,148	1,436	1,926	867	1,215
JOHANNESBURG (JNB)	116,178	8,741	6,237	10,646	6,743	10,823	14,430	12,135	105,218	8,672	6,645	6,384	11,287	2,521	3,618
TOTAL AFRICA	406,993	30,487	29,867	37,226	29,302	34,106	39,729	33,289	369,518	28,977	27,769	26,912	34,840	23,872	21,982
BOMBAY (BOM)	73,691	6,253	6,442	6,161	4,486	9,680	1,296	7,284	57,657	1,019	4,821	4,476	4,087	4,810	4,568
DUBAI (DXB)	122,115	14,870	21,141	23,848	17,050	7,376	16,917	16,022	183,322	13,866	5,729	13,116	12,639	12,768	10,158
JEDAH (JED)	8,130	463	0	2,432	1,429	0	472	0	6,315	0	256	264	450	493	322
KARACHI (KHI)	0	0	0	0	0	0	0	0	0	0	0	0	0	0	0
MUSCAT (MCT)	0	0	0	0	0	0	0	0	0	0	0	0	0	0	0
OTHERS															
TOTAL ASIA	203,936	21,586	27,583	32,441	22,965	17,056	18,685	23,306	247,294	14,885	10,806	17,856	17,176	18,071	15,048
AMSTERDAM (AMS)	176,803	13,085	6,414	19,163	17,641	16,243	15,802	3,883	112,445	3,950	2,357	3,832	4,353	2,851	12,591
BRUSSELS (BRU)	29,563	3,282	2,403	3,831	1,830	1,825	2,092	2,437	23,401	1,345	1,003	0	1,720	3,122	3,172
LONDON (LON)	195,780	17,709	12,957	23,915	20,474	18,237	15,037	16,001	173,710	14,002	7,252	11,057	8,175	11,690	13,803
PARIS-(CDG) & (PAR)	19,034	0	3,885	4,047	2,657	1,877	1,967	2,009	18,255	1,248	565	2,299	1,901	973	4,387
ROME (ROM) ^z	-	0	0	0	0	0	0	0	-	0	0	0	0	0	0
ZURICH (ZRH)	27,288	4,064	2,552	2,152	0	2,408	2,054	2,137	26,289	3,695	3,558	0	2,616	3,462	3,833
TOTAL EUROPE	448,468	38,140	28,211	53,108	42,602	40,590	36,952	26,467	354,100	24,240	14,735	17,188	18,765	22,098	37,786
TOTAL OTHERS**	428,639	37,102	45,355	52,666	44,102	40,382	42,050	32,073	497,902	28,960	32,450	40,715	37,122	26,736	35,891
GRAND TOTAL	1,488,177	127,315	131,016	175,441	138,971	132,134	137,416	115,135	1,468,814	97,062	85,760	102,671	107,903	90,777	110,707

Source : Kenya National Bureau of Statistics

- no passengers embarked

* Provisional

** Ports not listed

z All planes flying to Italy

FIG 15: J.K.I.A. PASSENGERS BY REGION OF DESTINATION

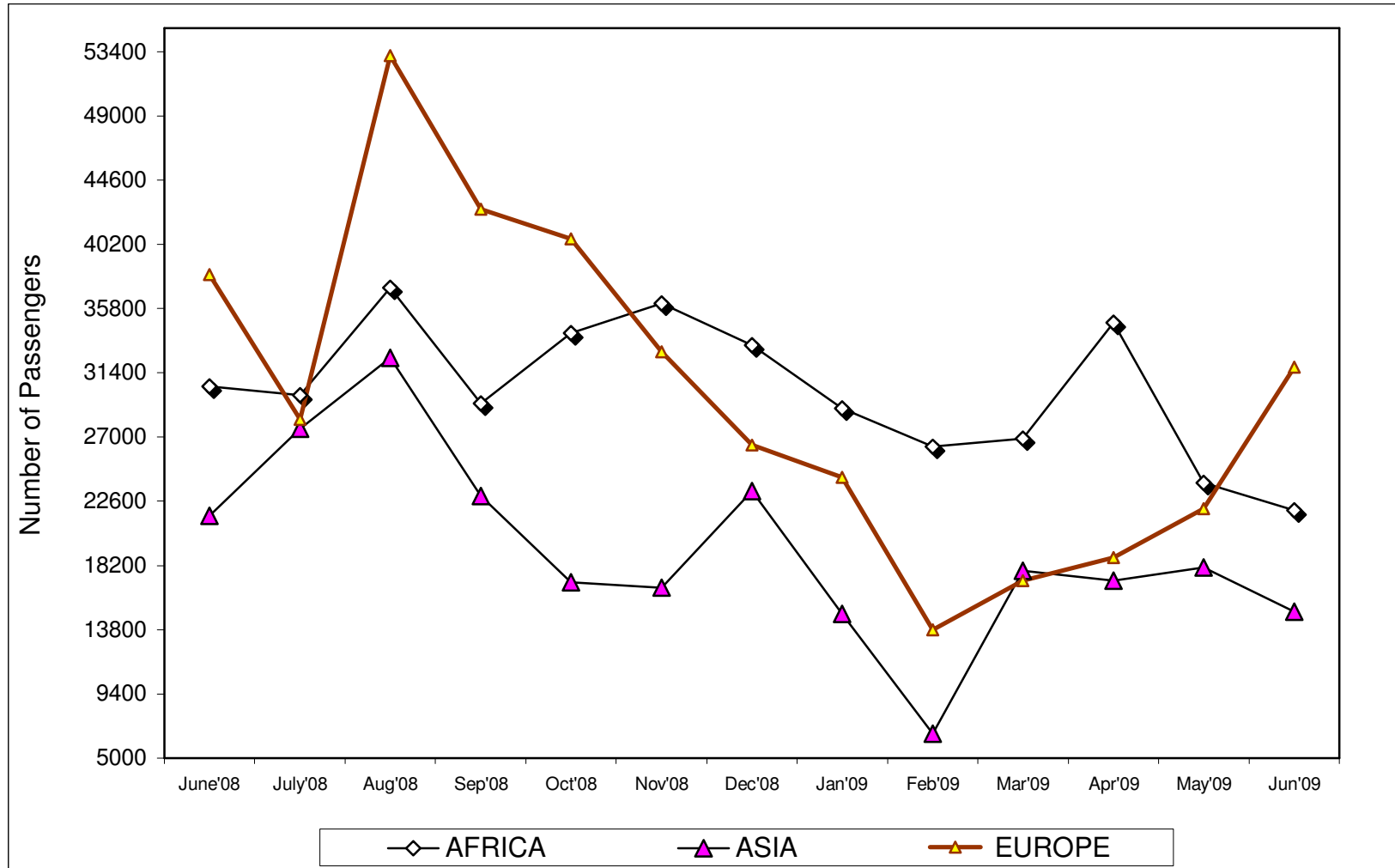


TABLE (18B): JOMO KENYATTA INT. AIRPORT INTERNATIONAL FLIGHTS ONLY- LANDED PASSENGERS BY PORT OF DESTINATION.

PORTS	2007	2008													
	TOTAL	June	July	Aug	Sep	Oct	Nov	Dec	TOTAL	Jan	Feb	Mar	Apr	May	June
ADDIS ABABA (ADD)	42,261	3,041	649	3,761	1,238	4,493	4,212	1,204	25,643	858	3,232	1,308	1,088	835	3,116
CAIRO (CAI)	23,824	2,369	3,888	6,478	2,390	3,853	2,276	4,426	33,372	1,184	1,202	2,239	2,354	2,173	2,506
DAR ES SALAAM (DAR)	85,689	4,881	7,963	7,909	4,633	6,176	7,129	6,714	76,886	5,553	6,670	6,275	6,746	10,702	10,945
ENTEBBE (EBB)	118,612	10,774	11,035	10,881	10,372	10,747	10,555	10,082	120,988	8,756	8,591	9,565	9,531	9,808	9,080
HARARE (HRE)	15,555	1,060	1,172	1,195	1,170	1,109	1,120	1,325	13,310	1,155	1,016	1,233	1,434	682	989
JOHANNESBURG (JNB)	107,676	9,171	7,154	10,042	6,814	10,408	10,840	16,038	103,179	7,148	5,527	6,077	14,417	2,571	4,444
TOTAL AFRICA	393,617	31,296	31,861	40,266	26,617	36,786	36,132	39,789	373,378	24,654	26,238	26,697	35,570	26,771	31,080
BOMBAY (BOM)	70,627	6,700	6,453	6,150	5,183	4,852	755	7,355	54,557	1,616	1,121	4,150	4,479	6,223	4,800
DUBAI (DXB)	118,377	15,587	19,616	20,475	18,581	6,064	15,746	19,349	178,977	14,215	5,395	12,276	10,114	12,877	13,750
JEDAH (JED)	6,906	706	0	1,546	250	0	195	0	3,899	0	165	452	234	350	568
KARACHI (KHI)	0	0	0	0	0	0	0	0	0	0	0	0	0	0	0
MUSCAT (MCT)	-	0	0	0	0	0	0	0	-	0	0	0	0	0	0
TOTAL ASIA	195,910	22,993	26,069	28,171	24,014	10,916	16,696	26,704	237,433	15,831	6,681	16,878	14,827	19,450	19,118
AMSTERDAM (AMS)	183,515	7,297	5,595	16,997	13,121	17,022	14,772	7,284	110,997	5,355	5,294	5,441	6,692	5,939	8,512
BRUSSELS (BRU)	19,720	5,751	1,828	1,412	0	1,985	1,158	309	16,160	767	600	0	706	2,132	5,562
LONDON (LON)	189,493	20,902	10,953	13,890	18,100	20,682	13,118	14,865	154,715	8,949	6,201	9,768	7,089	11,503	11,326
PARIS-(CDG)&(PAR)	17,293	0	2,892	2,789	1,672	2,268	1,775	2,905	15,524	639	584	1,870	1,228	670	3,823
ROME (ROM) Z	-	0	0	0	1,813	0	0	0	-	0	0	0	0	0	0
ZURICH (ZRH)	25,579	2,097	5,104	2,246	0	0	1,996	4,065	19,807	1,521	1,099	0	1,854	1,500	1,995
TOTAL(EUROPE)	435,600	36,047	26,372	37,334	34,706	41,957	32,819	29,428	317,203	17,231	13,778	17,079	17,569	21,744	31,218
OTHERS(TOTAL) **	445,935	42,088	48,881	50,659	41,906	45,431	39,842	38,499	547,024	26,562	30,350	35,424	63,060	45,747	46,510
GRAND TOTAL	1,471,062	132,424	133,183	156,430	127,243	135,090	125,489	134,420	1,475,038	84,278	77,047	96,078	131,026	113,712	127,926

Source : Kenya National Bureau of Statistics

- no passengers landed

* Provisional

** Ports not listed

z Includes all planes from Italy

FIG 16: J.K.I.A. PASSENGERS BY REGION OF ORIGIN

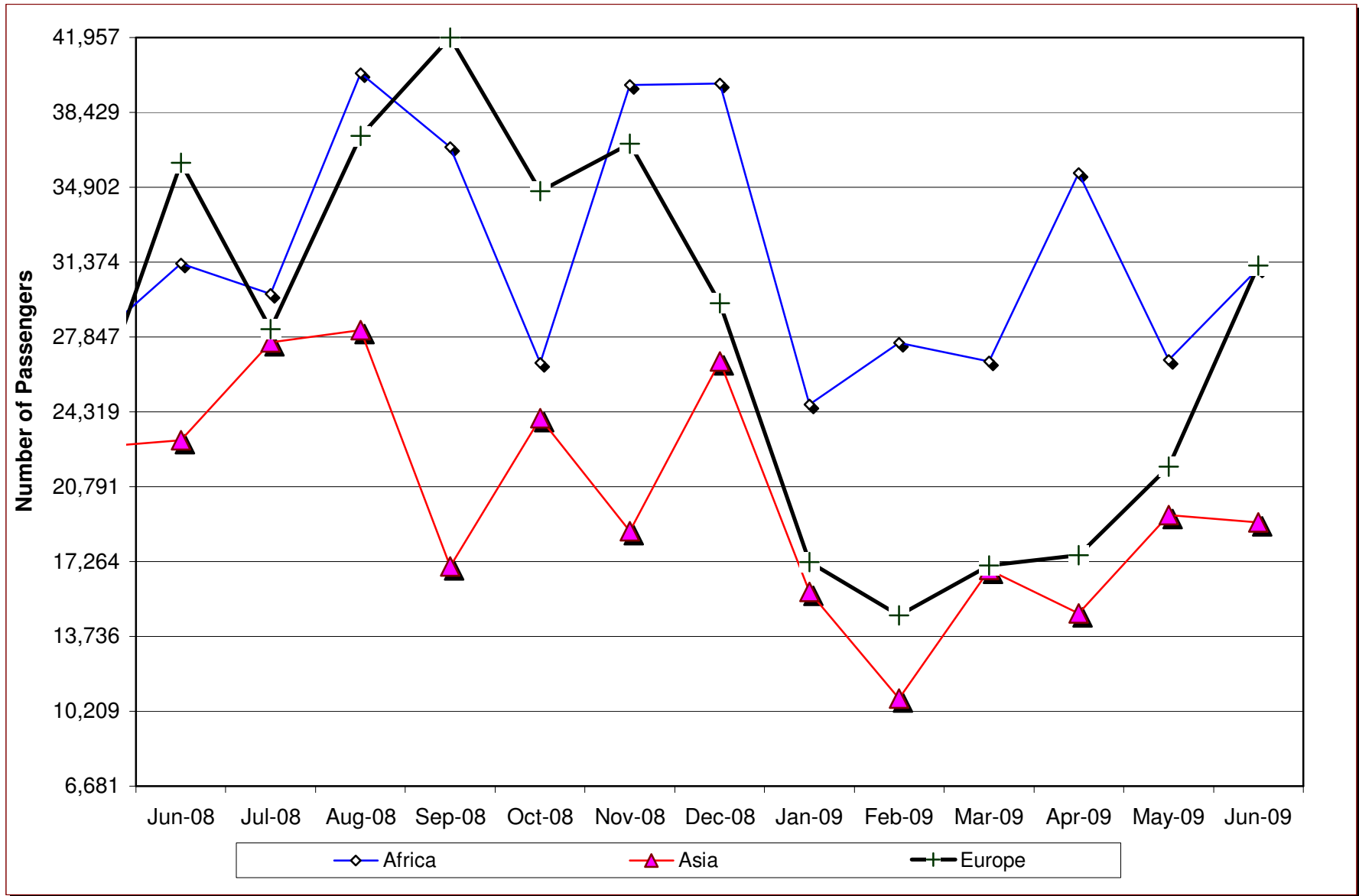


Table 18 C: New Vehicle Registration

<i>Body Type/Month</i>	2008												2009	
	<i>Feb</i>	<i>Mar</i>	<i>Apr</i>	<i>May</i>	<i>June</i>	<i>July</i>	<i>Aug</i>	<i>Sep</i>	<i>Oct</i>	<i>Nov</i>	<i>Dec</i>	<i>Cumulative 2008</i>	<i>Jan</i>	<i>Feb</i>
Saloons	1,065	830	1,272	1,311	1,230	1,823	2,686	1,630	1,603	1,527	1,833	18,686	1,497	708
St,Wagon	1,553	1,299	1,839	2,148	1,890	2,799	2,689	2,580	2,232	2,358	2,607	26,696	1,997	1,182
Vans,P/Ups,etc	706	566	877	413	405	555	408	479	680	587	757	7,034	613	621
M/Buses	452	435	559	390	314	509	564	426	373	370	387	5,206	332	366
Buses	61	82	97	128	73	126	129	104	108	104	148	1,243	65	70
Lorries	462	541	658	547	593	585	680	682	542	330	662	6,691	534	399
Trailers	134	184	182	168	170	193	170	88	166	247	221	2,100	208	281
Motors Cycles	1,982	1,904	3,840	4,390	3,859	4,530	4,605	5,964	6,680	6,471	5,447	51,412	7,688	8,193
3 Whellers	48	75	30	56	57	79	67	45	80	60	44	704	42	61
Wheeled tractors	121	85	133	101	88	90	67	143	136	87	124	1,262	85	139
Others	45	43	52	47	59	58	43	69	65	253	36	797	41	361
TOTAL	6,629	6,044	9,539	9,699	8,738	11,347	12,108	12,210	12,665	12,394	12,266	121,831	13,102	12,381

Source : Kenya National Bureau of Statistics

* Provisional

- Not specified