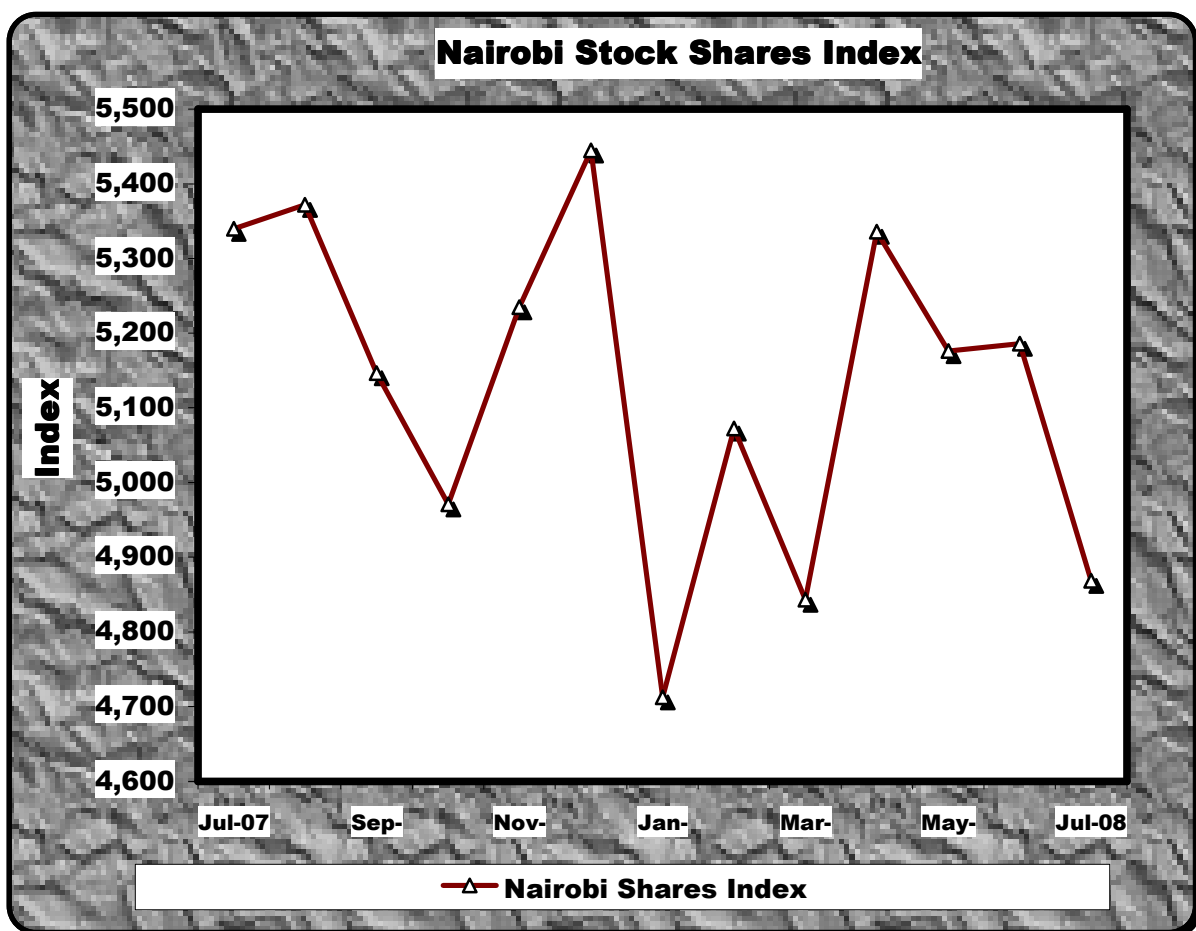




# LEADING ECONOMIC INDICATORS



**KENYA NATIONAL BUREAU OF STATISTICS**

P.O. Box 30266- 00100 Nairobi

Tel: 317586/88, 317612/22 Fax: 315977

Website: [www.cbs.go.ke](http://www.cbs.go.ke)

email: [director@cbs.go.ke](mailto:director@cbs.go.ke)

# AUGUST 2008

**TABLE OF CONTENTS ..... PAGE**

**MACRO ECONOMICS PRICES**

Key highlights on Leading Economic Indicators..... 4  
TABLE 1: KENYA CONSUMER PRICE INDICES AND INFLATION RATE..... 9  
TABLE 2: MEAN FOREIGN EXCHANGE RATES OF KENYA SHILLINGS AGAINST  
SELECTED MAJOR CURRENCIES AT THE END OF THE MONTH..... 11  
Table 3: Interest Rates (%) .....13  
TABLE 4: CAPITAL MARKETS – NAIROBI STOCK EXCHANGE.....14

**MONEY SUPPLY AND RESERVES**

TABLE 5 (a): MONEY SUPPLY .....15  
TABLE 5b: FOREIGN EXCHANGE RESERVES .....17

**AGRICULTURE**

TABLE 6: COFFEE SALES AND PRICES ..... 18  
TABLE 7: TEA PRODUCTION AND PRICES.....19  
Table 8(a): AVERAGE MONTHLY RETAIL PRICES FOR DRY MAIZE IN THE YEAR-2007..... 20  
Table 8(b): Average Monthly Retail Prices for Dry Maize in the Year 2008 .....21  
Table 8(c): Average Monthly Retail Prices for Dry Beans Prices (2007) ..... 22  
Table 8(d): Average Monthly Retail Prices for Dry Beans Prices (2008)..... 23

**TRADE**

Table 9: Export of Coffee, Tea and Horticultural Produce ..... 24  
Table 10: Monthly Exports of Horticultural Products..... 25  
Table 11: Kenya’s External Trade, Apr 2007 – May 2008 ..... 26  
Table 12: Major Destinations of Domestic Exports, Jan 2007 – May 2008..... 27  
Table 13: Major Origins of Imports, Apr 2007-May 2008.....28  
Table 12 (a): Domestic Exports by Broad Economic Category ..... 29  
Table 13 (a): Imports by Broad Economic Category..... 30

**ENERGY**

Table 14(a): Local Electricity Generation by Source .....31  
Table 14(b): Generation and Consumption of Electricity ..... 32  
Table 14 ( c ): Consumption of Petroleum Fuels ..... 33  
Table 14 (d): Weighted Average Retail Prices for Selected Fuel Products within Nairobi ..... 34  
Table 14 (e): Weighted Average Retail Prices for Selected Fuels in Kenya..... 35  
Table 14(f): Murban ADNOC Prices 2003-2008 ..... 35

**BUILDING AND CONSTRUCTION**

Table 15: Value of Building Plans Approved by Nairobi City Council (NCC)..... 36

**SELECTED MANUFACTURED PRODUCTS**

Table 16(a): Domestic Production of Sugar ..... 37  
Table 16(c): Production of Assembled Vehicles ..... 38  
Table 16(e): Cement production and Consumption .....40  
Table 16F: Milk Intakes in the Formal Milk Sector.....41

TOURISM

Table 17: Visitor Arrivals\* through Jomo Kenyatta International Airport (J.K.I.A) and Moi International Airport (M.I.A) .....  
42

TRANSPORT

TABLE (18A): JOMO KENYATTA INT. AIRPORT INTERNATIONAL FLIGHTS ONLY- EMBARKED PASSENGERS BY PORT OF DESTINATION. .... 43  
TABLE (18B): JOMO KENYATTA INT. AIRPORT INTERNATIONAL FLIGHTS ONLY- LANDED PASSENGERS BY PORT OF DESTINATION..... 45  
Table 18 C: New Vehicle Registration ..... 47

## CHARTS

FIG. 1: OVERALL MONTH ON MONTH AND UNDERLYING INFLATION RATES -----	10
FIG 2: END OF MONTH MEAN EXCHANGE RATE OF KENYA SHILLINGS AGAINST MAJOR SELECTED CURRENCIES -----	12
FIG 3: INTEREST RATES -----	13
FIG 4: NAIROBI STOCK EXCHANGE SHARES INDEX -----	14
FIG 5: MONEY SUPPLY (M3) -----	16
FIG 6: FOREIGN EXCHANGE RESERVES -----	17
FIG.7: COFFEE SALES at the NAIROBI COFFEE EXCHANGE -----	18
FIG.8: TEA PRODUCTION -----	19
Fig 9: Electricity Generation by Source -----	31
Fig 10: Electricity Generation Consumption and Power Losses -----	32
Fig 11(a): Average Retail Prices of selected Petroleum Products -----	34
Fig 11(b): Weighted Average Prices for LPG in Kenya -----	35
Fig 12: Trend for Murban ADNOC Crude Oil Prices -----	36
FIG 13: Milk Intake in the Formal Sector -----	41
FIG 14: VISITORS ARRIVING IN KENYA THROUGH THE MAIN AIRPORTS -----	42
FIG 15: J.K.I.A. PASSENGERS BY REGION OF DESTINATION -----	44
FIG 16: J.K.I.A. PASSENGERS BY REGION OF ORIGIN -----	46

## **Key highlights on Leading Economic Indicators**

### **Overview**

The monthly Leading Economic Indicators Publication for August 2008 highlight trends in Consumer Price Indices (CPI) and inflation, interest rates, exchange rates, international trade, agriculture, energy, manufacturing, building and construction, tourism and transport.

### **Macroeconomic Indicators and Financial Intermediation**

The CPI increased by 0.50 percent from 286.62 points in July 2008 to 288.06 points in August 2008. Month-on-month overall inflation rate increased from 26.5 percent in July 2008 to 27.6 percent in August 2008. On the other hand, month-on-month underlying inflation rate which excludes food items from the CPI basket increased from 12.2 percent in July 2008 to 13.1 percent in August 2008.

The Kenyan Shilling depreciated against the US dollar and Japanese Yen at the end of August 2008 while strengthening against the other major and regional currencies in the same period by various margins. The Kenyan Shilling appreciated against the Sterling Pound, the Euro and the South African Rand to exchange at an average of KSh 125.944, KSh 101.394 and KSh 8.937 at the end of August 2008, respectively. However, the Shilling depreciated against the US Dollar and the Japanese Yen to trade at an average of KSh 68.733 and KSh 63.064 in the same period compared to a trading of KSh 67.318 and KSh 62.248 at the end of July 2008, respectively. During the same period, the Shilling appreciated against Tanzanian and Ugandan Shillings to trade at KSh 16.928 and KSh 23.933, respectively.

The benchmark 91-day Treasury bill declined marginally from 8.031 per cent recorded in July 2008 to 8.020 per cent in August 2008. The weighted average lending rate offered by Commercial banks for loans and advances also declined marginally from 13.91 per cent recorded in July 2008 to 13.66 per cent in August 2008. Savings rate increased marginally from 1.67 per cent to 1.68 per cent over the same period.

The Nairobi Stock Exchange continued to be bearish for the fourth month with the share index (NSE 20) declining by 6.1 per cent from 5,185.6 points in June 2008 to stand at 4,868.3 points at the end of July 2008. Total value of shares traded in July 2008 declined significantly by 35.5 per cent from KSh 22.13 billion in June 2008 to KSh 14.3 billion in July 2008. Total number of shares traded also declined tremendously by 54.3 per cent from 2,154.9 million shares to 983.7 million shares over the same period.

Broad money supply (M3) expanded marginally by 0.5 per cent from KSh 850.6 billion in July 2008 to KSh 855.1 billion in August 2008. Money and quasi-money (M2) also expanded marginally by 0.7 per cent from KSh 719.2 billion to KSh 723.9 billion over the same period.

Gross Foreign Exchange Reserves expanded by 4.6 per cent from KSh 376.3 billion in June 2008 to KSh 393.6 billion in July 2008 while Net Foreign Exchange Reserves expanded marginally by KSh 103.0 million to KSh 292.7 billion over the same period.

## **SECTORAL PERFORMANCES**

### **a). Agriculture**

Quantity of coffee auctioned at the Nairobi Coffee Exchange stood at 1,957 MT in July 2008 compared to 4,669 MT in the same month in 2007. The average auction price was KSh 177.50 per kilogram in July 2008 compared to KSh 141.77 per kilogram in July 2007 partly due to the weakening of the US dollar.

Quantity of processed tea increased by 6.2 per cent from 22,817 MT in June 2008 to 24,239 MT in July 2008 while the average auction price increased from KSh154.16 per kilogram to KSh 169.00 per kilogram over the same period.

Average price for dry maize increase marginally from KSh 25.4 per kilogram in June 2008 to KSh 24.8 per kilogram in July 2008 while average price for dry beans declined from KSh 63.84 per Kilogram to KSh 60.35 per kilogram over the same period with Korokocho and Kikomba markets reporting the highest prices for maize and beans, respectively in July 2008.

**b). International Trade**

Quantity of coffee exported declined further in July 2008 by 12.3 per cent from 3,602.7 MT in June 2008 to stand at 3,158.5 MT while its value declined by 8.3 per cent from KSh 838.6 million to KSh 769.2 million over the same period.

Quantity of tea exported increased significantly by 27.6 per cent from 31,644.4 MT in June 2008 to 40,370.6 MT in July 2008 while its value increased significantly by 35.6 per cent from KSh 4,917.2 million to KSh 6,667.2 million over the same period.

Quantity of horticultural produce exported declined marginally from 15,312 MT in June 2008 to 15,262 MT in July 2008. However, export value of horticultural produce increased by 11.6 per cent from KSh 3.5 billion to KSh 3.9 billion over the same period.

Volume of trade increased significantly by 33.7 per cent from KSh 75,267.20 billion in June 2008 to KSh 100.6 billion in July 2008. Total exports and imports also increased significantly by 19.9 per cent and 40.9 per cent from to stand at KSh 30.3 billion and KSh 70.3 billion, respectively in July 2008.

Domestic exports by Broad Economic Category (BEC) indicate that food and beverages was the main export category in July 2008 with a value of KSh 12.3 billion or a share of 42.91 per cent up from a share of 41.61 per cent recorded in June 2008. All the other economic categories recorded various shares in total export with non-food industrial supplies and consumer goods not elsewhere specified recording a value of KSh 8.7 billion and KSh 6.7 billion in July 2008, respectively.

Imports by Broad Economic Category (BEC) indicate that shares of all import categories recorded mixed performance in July 2008. Imports of Fuel and lubricants and, non-food industrial supplies had a value of KSh 26.0 billion and KSh 19.5 billion, respectively in July 2008. Other major contributors to the import bill by main categories in July 2008 included machinery and other equipments, transport equipment and consumer goods not elsewhere specified with shares of 14.17, 11.45 and 6.25 per cent, respectively.

**c). Energy**

Total electricity generation declined marginally from 564.2 million KWh in July 2008 to 561.5 million KWh in August 2008. The share of hydro generation stood at 55.9 per cent while geothermal and thermal generation had a share of 16.7 and 27.4 per cent, respectively in August 2008. Total domestic consumption of electricity rose by 11.0 per cent from 423.3 million KWh in July 2008 to 470.0 million KWh in August 2008. Power losses improved from 137.3 million KWh to 89.4 million KWh over the same period.

Exports of electricity to Uganda declined from 3.59 million KWh in July 2008 to 2.14 million KWh in August 2008 while total imports of electricity from Uganda and Tanzania increased from 1.7 million KWh to 2.2 million KWh over the same period.

Total consumption of petroleum products declined by 11.6 per cent from 1,572.3 thousand MT in the first half of 2007 to 1,389.8 thousand MT in the same half of 2008.

In the domestic market, average retail prices for motor gasoline, light diesel oil and illuminating kerosene continued with the upward trend in August 2008. Motor gasoline, light diesel oil and illuminating kerosene retailed at an average of KSh 105.90 per litre, KSh 100.90 per litre and KSh 84.95 per litre up from KSh 103.30 per litre, KSh 97.68 per litre and KSh 80.95 per litre in July 2008, respectively. In Nairobi, the price of motor gasoline and light diesel were KSh 108.20 and KSh 103.10 per litre in August 2008 up from KSh 106.10 and KSh 100.21 per litre in July 2008, respectively.

In the international market, the price of Murban crude oil declined substantially by 14.5 per cent from US Dollars 137.35 per barrel in July 2008 to US Dollars 117.50 per barrel in August 2008.

**d). Manufacturing and, building and construction**

Domestic production of sugar declined by 17.2 per cent from 49,300 MT in June 2008 to 40,805 MT in July 2008 while production of soft drinks declined by 10.5 per cent from 162,850 MT in the first half of 2007 to 145,711 MT in same half of 2008.

Production of new assembled vehicles increased by 41 vehicles from 3,118 assembled vehicles in the first half of 2007 to 3,159 assembled vehicles in the same half of 2008 while production of galvanized sheets declined marginally from 92,875 MT to 94,335 MT over the same period.

Quantity of cement produced increased marginally from 268.6 thousand MT in July 2008 to 270.8 thousand MT in August 2008. However, consumption of cement declined by 11.8 per cent from 176.7 thousand MT to 155.9 thousand MT over the same period.

Milk deliveries in the formal milk sector declined by 14.0 per cent from 204.5 million litres in the first half of 2007 to 175.9 million litres in the same half of 2008.

**e). Tourism and Transport**

The number of visitors who arrived through Jomo Kenyatta International Airport (JKIA) and Moi International Airport increased significantly by 46.2 per cent from 50,283 visitors recorded in June 2008 to 73,519 visitors in July 2008.

The number of passengers who embarked at Jomo Kenyatta International Airport (JKIA) increased marginally by 2.9 per cent from 127,315 persons in June 2008 to 131,016 persons in July 2008 while passengers who landed increased marginally from 132,424 persons to 133,183 over the same period.

Total number of vehicles registered a decline of 9.5 per cent from 9,699 vehicles in May 2008 to 8,780 vehicles in July 2008. Motor cycles were the main vehicles registered in June 2008 followed by station wagons.

TABLE 1: KENYA CONSUMER PRICE INDICES AND INFLATION RATE

PERIOD	Base Oct 1997=100.				
	NAIROBI INDEX	REST* OF URBAN TOWNS INDEX	OVERALL KENYA INDEX	OVERALL MONTH ON MONTH INFLATION	UNDERLYING INFLATION RATE****
<b>2007</b>					
June	224.91	224.95	224.93	11.1	5.2
July	226.53	226.60	226.57	13.6	5.6
August	227.64	224.56	225.79	12.4	5.2
September	230.29	226.74	228.16	11.7	5.1
October	230.93	229.37	229.99	10.6	5.2
November	233.73	232.99	233.28	11.8	5.8
December	242.14	238.26	239.81	12.0	5.9
<b>2008</b>					
January	266.28	257.39	260.94	18.2	7.6
February	267.04	265.92	266.37	19.1	9.3
March	277.61	274.40	274.55	21.8	9.8
April	282.38	281.55	281.88	26.6	9.6
May	293.43	290.69	291.79	31.5	10.5
June	287.09	293.17	290.75	29.3	11.2
July	285.15	287.60	286.62	26.5	12.2
August	286.94	288.80	288.06	27.6	13.1

**Source: Kenya National Bureau of Statistics**

\* Rest of Urban include: Nyeri, Mombasa, Malindi, Kilifi, Meru, Garissa, Kisii, Kisumu, Nakuru, Kitale, Kabarnet, and Kakamega.

\*\* Provisional

\*\*\* The 'Month on Month' inflation rate is calculated as a percentage change of the CPI between the current month and the same month a year ago.

FIG. 1: OVERALL MONTH ON MONTH AND UNDERLYING INFLATION RATES

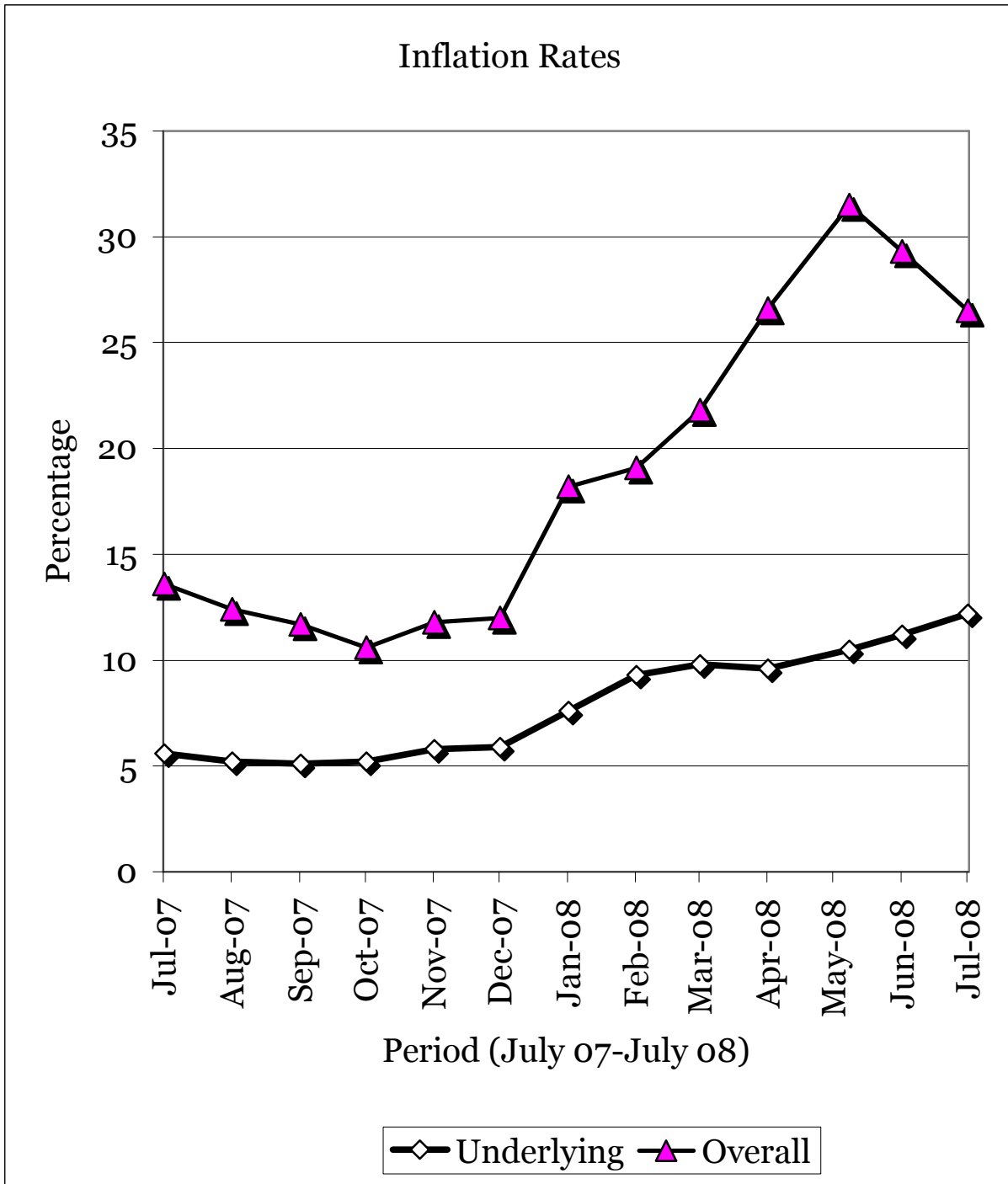


TABLE 2: MEAN FOREIGN EXCHANGE RATES OF KENYA SHILLINGS AGAINST SELECTED MAJOR CURRENCIES AT THE END OF THE MONTH

TABLE 2

CURRENCY	2007					2008							
	Aug	Sep	Oct	Nov	Dec	Jan	Feb	Mar	Apr	May	June	July	Aug
1 US Dollar	66.748	66.971	67.114	64.424	62.541	70.561	70.639	62.766	62.136	62.029	64.694	67.318	68.733
1 Sterling Pound	135.745	135.309	138.852	132.808	124.785	140.365	140.111	124.453	122.281	122.574	128.960	133.254	125.944
1 EURO	94.251	94.784	96.827	94.939	89.853	104.930	106.702	98.829	97.007	96.160	102.157	104.980	101.394
100 Japanese Yen	57.340	58.132	58.505	58.404	55.237	66.217	66.399	62.924	60.010	58.855	61.082	62.248	63.064
1 SA Rand	9.650	9.729	10.241	9.430	9.015	9.668	9.493	7.736	8.135	8.226	8.210	9.117	8.937
USHS/KES	26.218	26.079	25.882	27.040	27.198	24.447	23.995	26.845	27.054	26.278	25.059	24.213	23.933
TSHS/KES	18.488	18.366	17.359	18.169	17.964	16.512	16.592	19.142	19.458	19.322	18.263	17.388	16.928

\* Mean of commercial banks buying and selling exchange rates prevailing at the end of the month

'Source: Kenya National Bureau of Statistics

FIG 2: END OF MONTH MEAN EXCHANGE RATE OF KENYA SHILLINGS AGAINST MAJOR SELECTED CURRENCIES

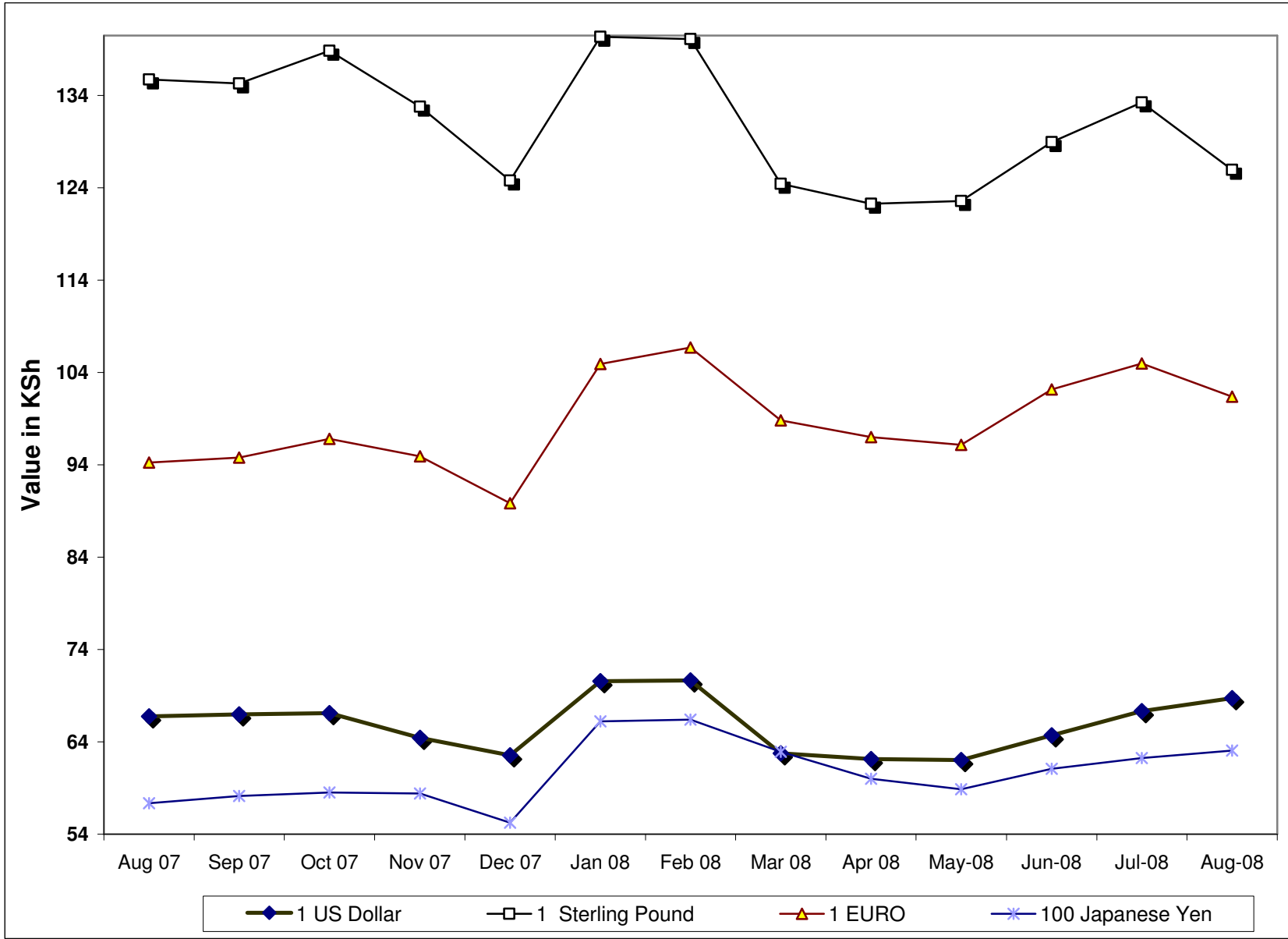


Table 3: Interest Rates (%)

MONTHS	Average Yield Rates 91 - Days Treasury Bills	Rates for Commercial Banks Loans and Advances (Weighted Average)	Overdraft Rates	Inter - Bank Rates	Savings (Commercial Banks Rates)
<b>2007</b>					
August	7.30	13.04	13.39	7.38	1.60
September	7.35	12.87	13.26	7.59	1.67
October	7.55	13.24	13.29	7.65	1.64
November	7.52	13.39	13.43	6.50	1.65
December	6.87	13.32	12.96	7.05	1.67
<b>2008</b>					
January	6.99	13.78	13.41	7.611	1.72
February	7.28	13.84	13.26	7.213	1.70
March	6.89	14.06	13.48	6.348	1.72
April	7.35	13.91	13.46	6.697	1.71
May	7.76	14.01	13.53	7.719	1.71
June	7.726	14.06	13.30	7.767	1.70
July	8.031	13.91	13.49	8.060	1.67
August	8.020	13.66	13.11	6.928	1.68

Source : Central Bank of Kenya

- data not available

\* Provisional

FIG 3: INTEREST RATES

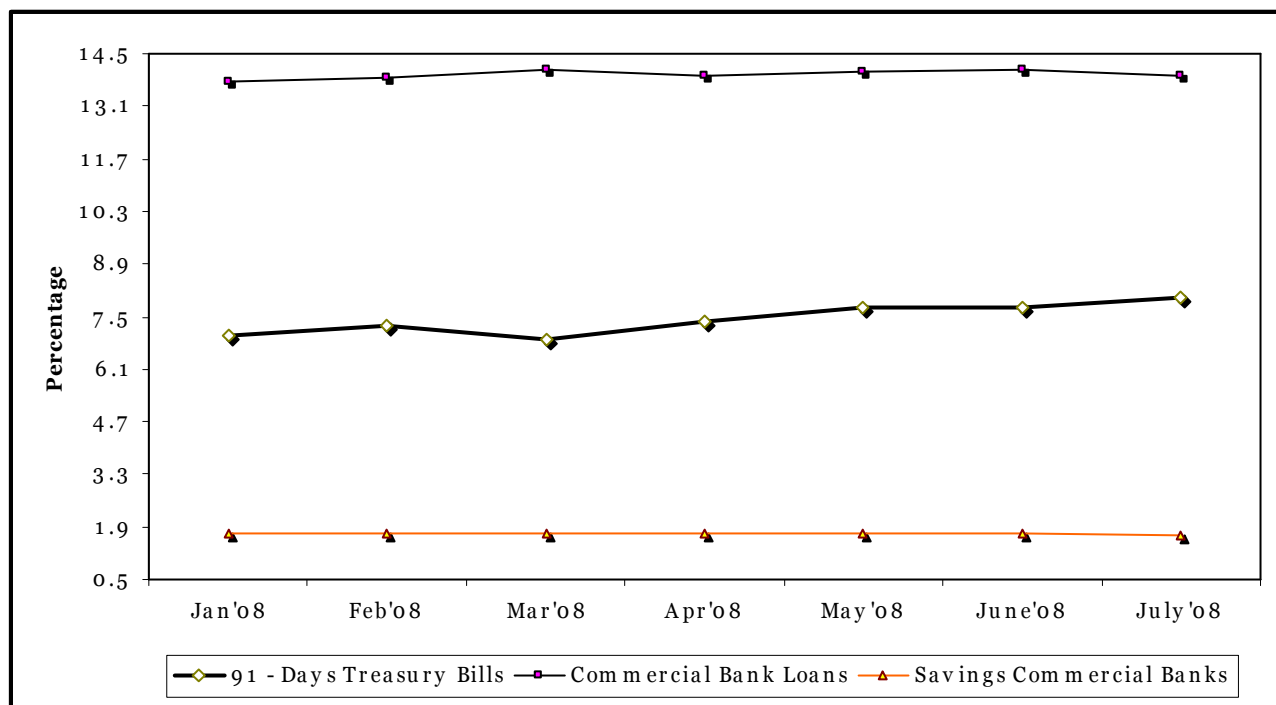


TABLE 4: CAPITAL MARKETS – NAIROBI STOCK EXCHANGE

MONTH	NUMBER OF TRANSACTIONS	NUMBER OF SHARES ('000)	VALUE OF SHARES ('000 KShs)	SHARES INDEX Base Jan 1966=100
Jul-07	74,162	168,363	6,442,186	5,340.1
Aug-07	96,045	248,136	9,251,195	5,372.0
Sep-07	140,762	289,309	9,901,969	5,146.5
Oct-07	86,422	183,611	7,214,017	4,971.0
Nov-07	73,780	185,853	7,914,802	5,234.5
Dec-07	53,106	140,806	6,017,989	5,444.8
Jan-08	69,754	197,138	7,046,138	4,712.7
Feb-08	74,615	198,833	8,011,260	5,072.4
Mar-08	60,038	180,644	7,320,547	4,843.2
Apr-08	57,526	141,766	5,635,570	5,336.0
May-08	71,959	168,034	6,836,652	5,175.8
Jun-08	143,942	2,154,897	22,130,018	5,185.6
Jul-08	132,507	983,747	14,282,189	4,868.3

Source : Nairobi Stock Exchange

FIG 4: NAIROBI STOCK EXCHANGE SHARES INDEX

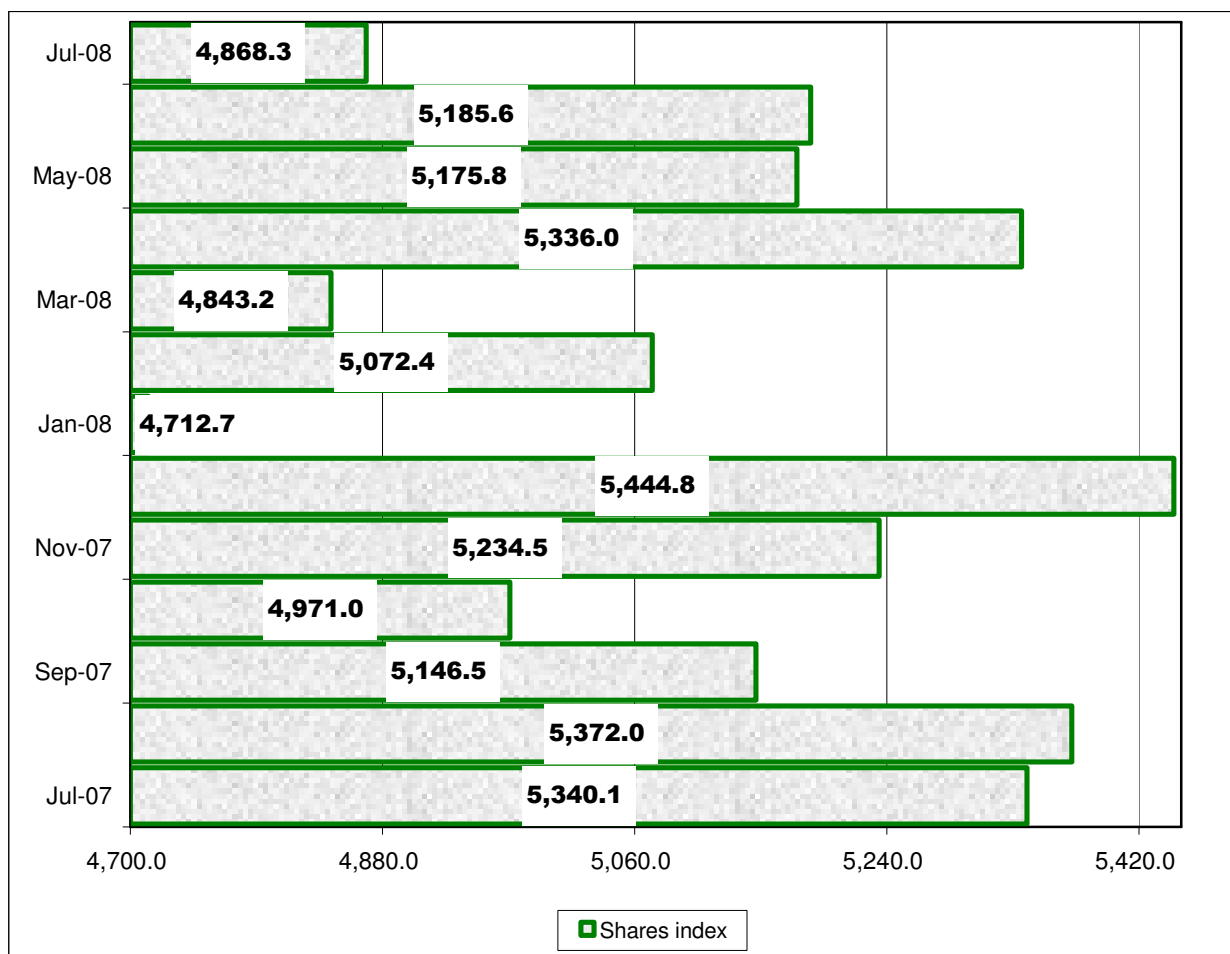


TABLE 5 (a): MONEY SUPPLY

KSh Million

As at end of	MONEY AND QUASI MONEY (M2)				BROAD MONEY (M3)	% CHANGE*** *
	MONEY (M1)*	QUASI - MONEY		TOTAL (M2)		
		(Commercial Banks)**	(NBFIs)			
<b>2007</b>						
July	339,831	263,415	9,431	612,677	713,613	0.74
August	352,317	265,706	11,025	629,048	730,511	2.37
September	349,774	270,440	10,927	631,141	733,329	0.39
October	350,741	275,024	11,877	637,642	739,663	0.86
November	360,486	274,171	11,888	646,545	745,268	0.76
December	373,310	281,635	11,930	666,875	777,596	4.34
<b>2008</b>						
January	378,042	293,665	10,557	682,264	801,248	3.04
February	378,872	303,175	10,316	692,363	810,207	1.12
March	380,141	307,142	9,859	697,122	811,214	0.12
April	436,622	302,408	12,978	744,492	864,105	6.52
May	395,158	304,077	11,995	709,063	839,239	-2.88
June	391,824	314,762	12,723	715,968	840,679	0.17
July	382,392	325,353	12,633	719,193	850,631	1.18
August	38,361	328,254	12,678	723,880	855,138	0.53

**Source : Central Bank of Kenya**

\* Currency in circulation less cash in banks plus all demand deposits except those of Central Government, Local Govt, Banks, non residents and foreign currency deposits.

\*\* All other deposits in commercial banks except those of Central Government.

\*\*\* Broad Money (M3) includes M2 and Quasi - Money supplied by Non Bank Financial Institutions

\*\*\*\* Compared with previous month.

\*\*\*\*\* Provisional

\*\*\*\*\*From January 2006 in line with the harmonisation of definitions of monetary aggregates within East African Countries(EAC) monetary definitions have been redefined for the following aggregates.

1. Base money =currency outside banks plus deposits at the Central Bank

2.Narrow Money (M1) =currency in circulation plus demand deposits

3. Broad Money M3 in the old series becomes broad money ( M2) and is defined as M1 plus net Quasi Monetary

FIG 5: MONEY SUPPLY (M3)

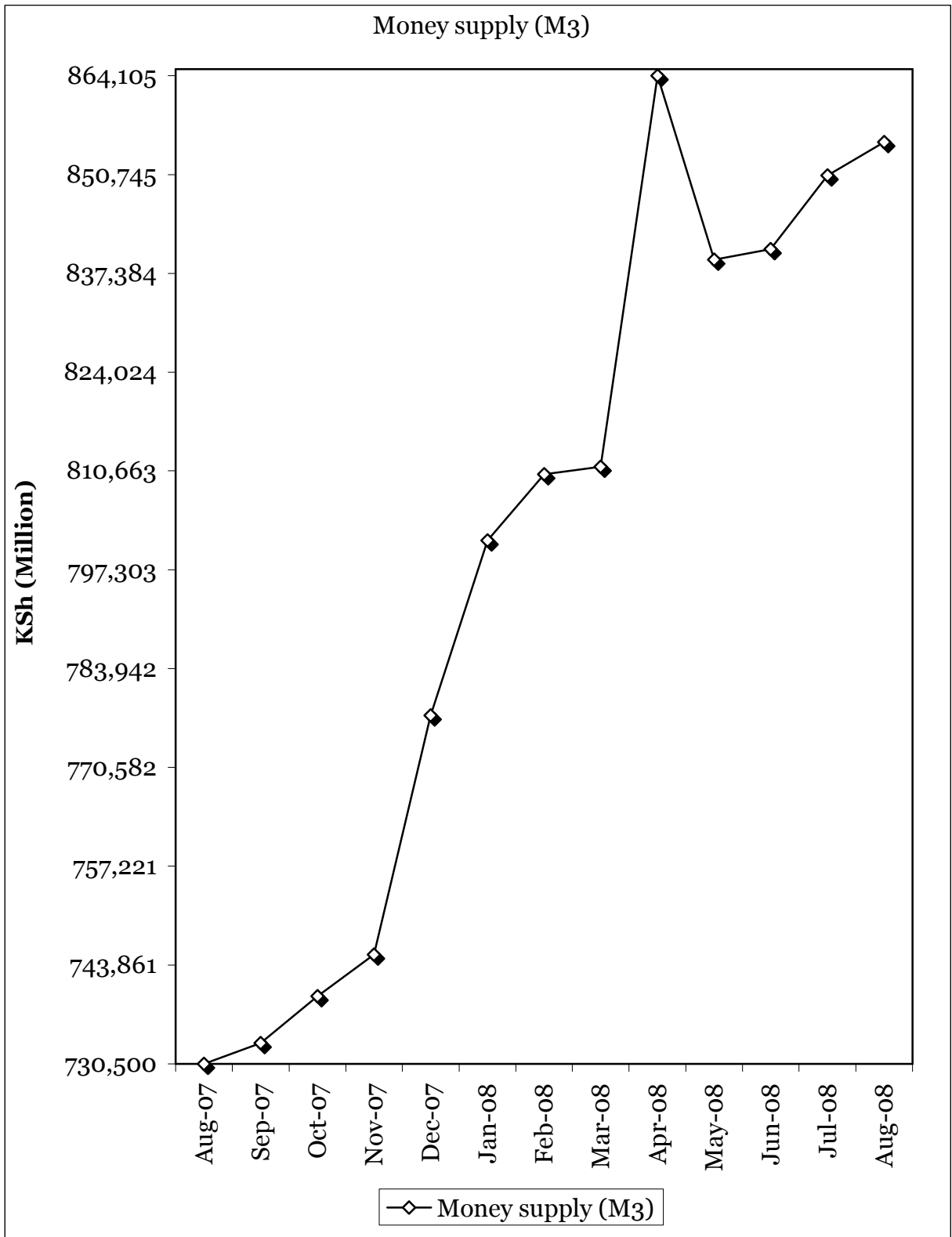


TABLE 5b: FOREIGN EXCHANGE RESERVES

MONTHS	CENTRAL MONETARY AUTHORITY			COMMERCIAL BANKS	GROSS TOTAL	NET FOREIGN EXCHANGE
	CENTRAL BANK	CENTRAL GOVERNMENT	TOTAL			
<b>KSh. Million</b>						
<b>2007</b>						
June	180,883	1,346	182,229	69,514	251,743	223,495
July	189,058	1,334	190,392	71,878	262,270	238,050
August	188,978	1,334	190,312	73,177	263,489	231,745
September	188,562	1,344	189,906	70,297	260,203	225,993
October	191,265	1,344	192,609	76,392	269,001	227,139
November	191,310	1,344	192,654	70,747	263,401	219,822
December	228,677	1,265	229,942	75,343	305,284	255,775
<b>2008</b>						
January	249,055	1,450	250,505	74,449	324,954	278,808
February	239,306	1,450	250,505	74,333	324,838	267,261
March	216,034	1,450	217,484	83,026	300,510	251,014
April	211,637	1,372	213,009	98,622	311,631	263,236
May	214,110	1,372	215,482	112,211	327,693	280,192
June	223,401	1,372	224,773	151,481	376,254	292,664
July	229,791	1,372	231,163	162,483	393,646	292,767

Source : Central Bank of Kenya

\* Central Government includes reserve position in the Fund and deposits with Crown Agents.

FIG 6: FOREIGN EXCHANGE RESERVES

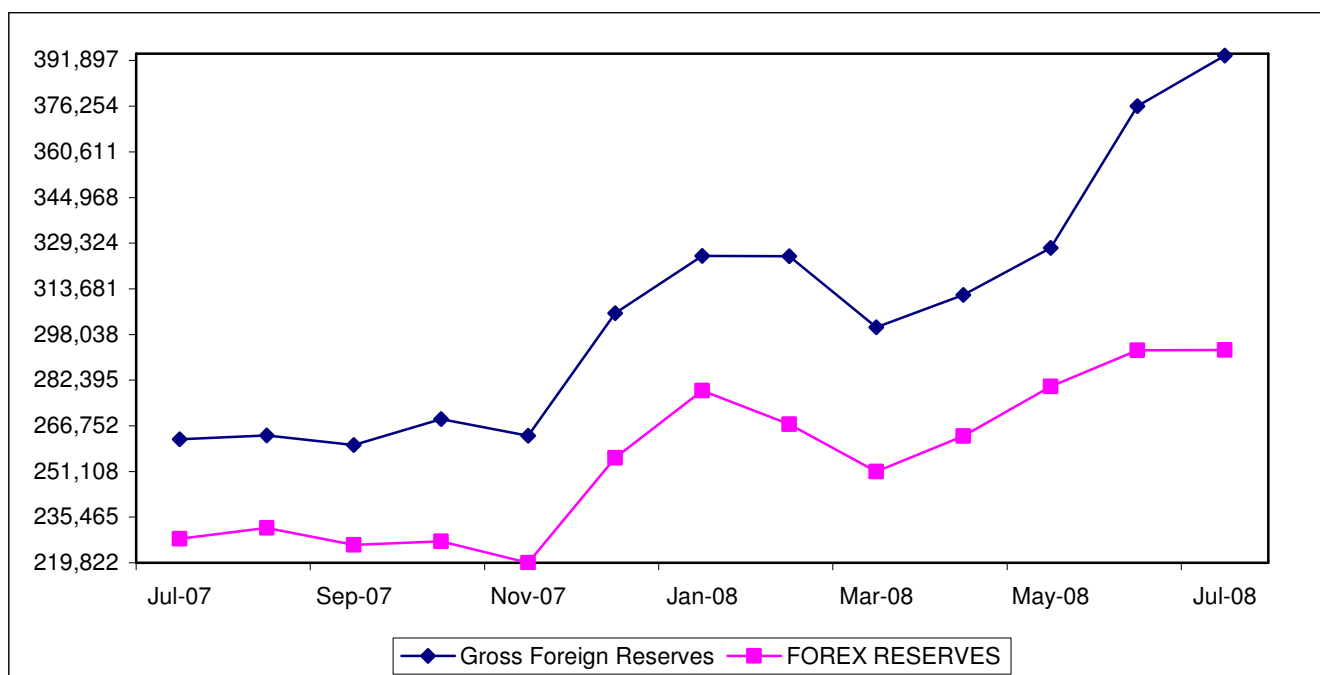


TABLE 6: COFFEE SALES AND PRICES

Months	2007***			2008***		
	QUANTITY (MT)	PRICE (\$ /kg)	PRICE (Ksh /kg)	QUANTITY (MT)	PRICE (\$ /kg)	PRICE (Ksh /kg)
January	4,670	2.88	201.48	2,344	2.89	203.63
February	5,064	3.03	211.04	4,899	3.12	220.19
March	6,839	2.99	207.62	6,117	3.09	193.98
April	6,324	2.67	182.91	6,374	2.72	169.14
May	6,991	2.47	166.41	3,179	2.34	144.93
June	5,451	2.18	145.61	-	-	-
July	4,669	2.11	141.77	1,957	2.64	177.50
August**	0	0	0			
September	3,817	2.36	157.96			
October	4,252	2.24	150.18			
November	2,895	2.21	142.15			
December	1,296	2.86	178.73			
<b>Annual</b>	<b>52,269</b>	<b>2.56</b>	<b>173.91</b>			

Source : Coffee Board of Kenya

\* Auction Price

\*\* Nairobi Coffee Exchange was in recess for most of August 2003, 2005,2006,2007&June 2008

\*\*\* Figures subject to revision

**NB:** MT denotes Metric Tonnes

FIG.7: COFFEE SALES at the NAIROBI COFFEE EXCHANGE

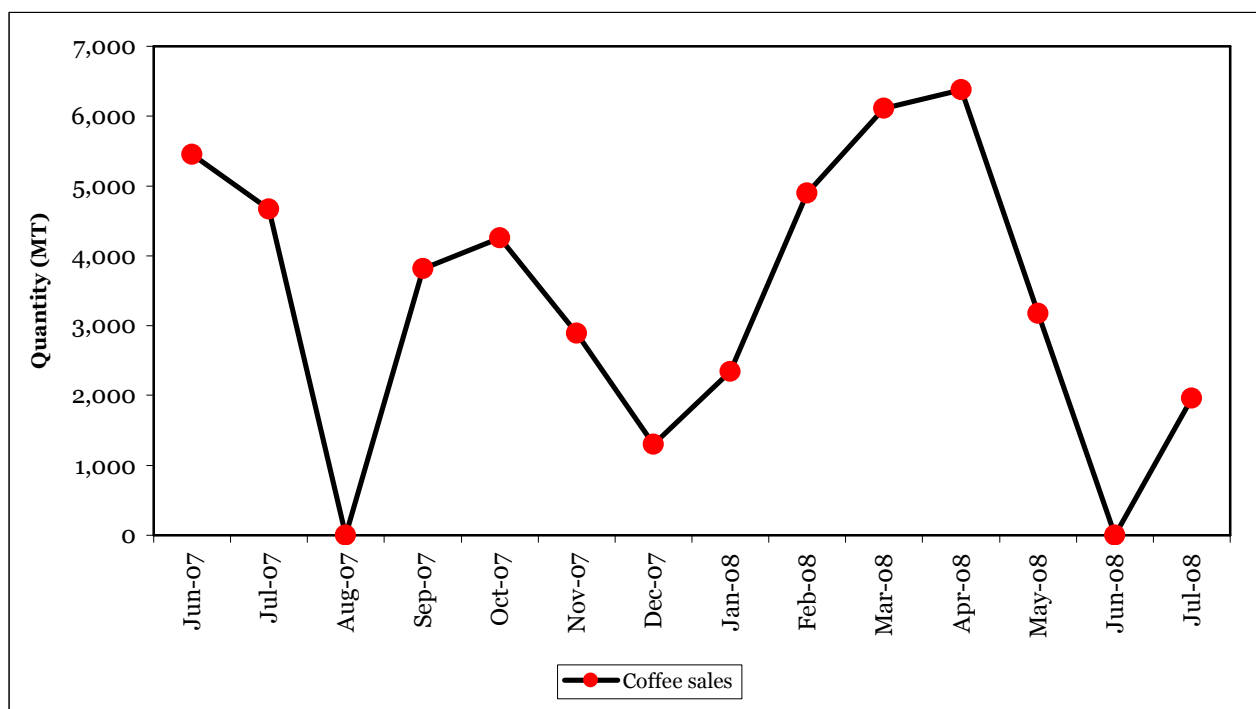


TABLE 7: TEA PRODUCTION AND PRICES

Months	2007**			2008**		
	QUANTITY	PRICE*	PRICE*	QUANTITY	PRICE*	PRICE*
	(MT)	(\$/kg)	(KShs/kg)	(MT)	(\$/kg)	(KShs/kg)
January	41,606	1.80	125.39	29,745	2.28	153.94
February	34,839	1.75	121.57	24,094	2.42	169.94
March	32,256	1.70	117.86	16,916	2.21	145.10
April	30,672	1.65	113.31	27,415	2.31	143.67
May	32,075	1.65	110.54	36,402	2.28	140.85
June	27,333	1.75	116.25	22,817	2.43	154.16
July	22,742	1.74	116.29	24,239	2.55	169.00
August	22,752	1.75	118.00			
September	28,953	1.87	125.17			
October	35,210	1.87	124.99			
November	32,336	1.80	118.78			
December	28,832	1.85	118.78			
<b>Annual</b>	<b>369,605</b>	<b>1.77</b>	<b>119.24</b>			

Source: Tea Board of Kenya

MT for Metric Tonnes

\*Auction prices

\*\*Figures subject to revision

FIG.8: TEA PRODUCTION

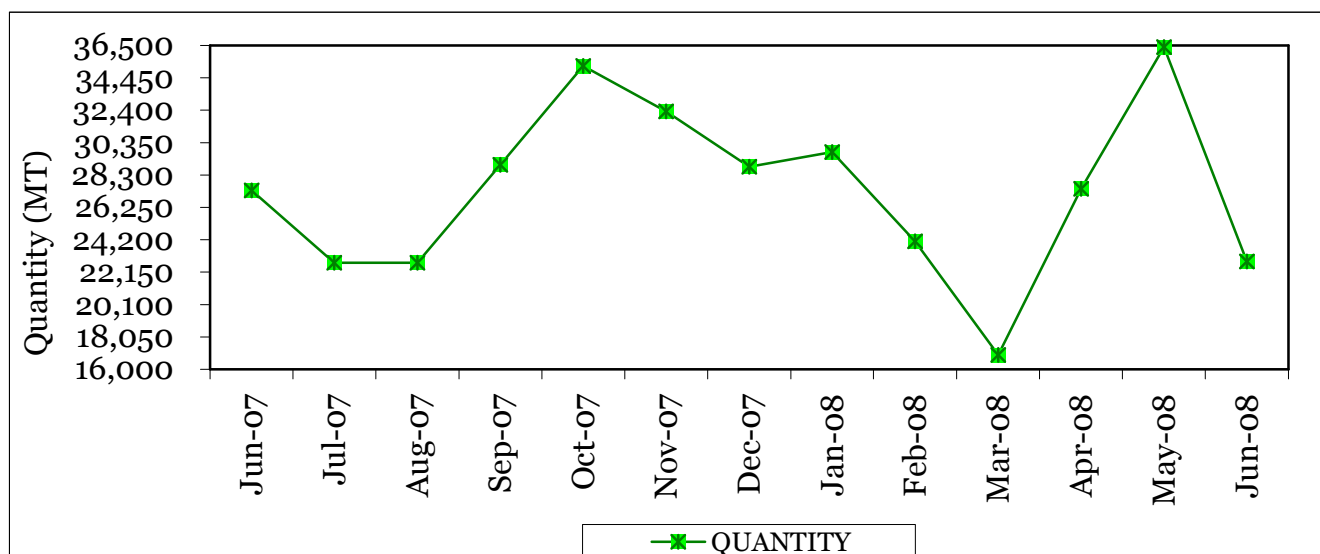


Table 8(a): AVERAGE MONTHLY RETAIL PRICES FOR DRY MAIZE IN THE YEAR-2007

MARKETS	Ksh. Per Kg.											
	Jan	Feb	March	April	May	JUNE	JULY	August	Sep	Oct	Nov	Dec
KIAMBU	17.39	16.67	16.67	14.29	16.67	11.90	11.90	11.90	9.52	9.52	9.52	-
LIMURU	15.00	15.00	15.00	15.00	15.00	15.00	16.18	16.12	16.00	15.00	15.00	-
THIKA	18.18	19.05	19.05	19.05	19.05	18.18	19.05	18.18	18.18	18.18	18.18	-
GATUNDU	18.34	16.67	14.29	16.67	15.78	14.29	10.00	17.50	-	19.05	-	-
MUTHITHI	11.90	11.90	10.71	9.52	10.24	10.72	13.33	-	-	-	-	-
MUKUYU	17.55	15.79	15.79	15.00	19.05	15.79	12.50	12.50	-	-	-	14.29
KIRIAINI	16.67	16.67	16.67	16.67	14.29	14.29	14.29	14.29	14.29	-	-	14.29
ENGINEER	18.00	16.67	16.25	15.00	16.67	20.00	18.63	15.00	15.00	15.00	15.00	-
NYERI	19.05	16.67	16.67	14.29	14.29	19.05	19.05	14.29	14.29	14.29	-	-
ENDARASHA	16.67	17.86	19.05	20.00	19.05	-	-	-	-	-	-	-
KARATINA	15.91	16.29	13.64	13.33	14.29	17.50	13.33	14.29	15.00	15.00	15.00	-
GAKINDU	16.67	17.50	17.50	14.29	17.50	12.50	14.29	17.50	17.50	14.29	14.29	-
NANYUKI	20.00	20.00	20.00	20.00	20.00	20.00	17.00	17.00	20.00	20.00	20.00	-
NYAHURURU	17.50	15.95	14.59	12.00	12.00	22.50	11.90	14.29	-	-	-	-
MARIAKANI	20.00	20.00	18.00	20.00	18.00	18.00	18.00	17.00	17.00	17.00	17.00	18.00
KALOLENI	20.00	20.00	17.00	17.00	17.00	18.00	18.00	17.00	17.00	17.00	14.00	18.00
MALINDI	20.00	17.21	20.00	-	20.00	20.00	20.00	20.00	-	-	-	-
KIBAUNI KILIFI	21.00	20.00	18.00	18.00	17.00	16.50	17.00	17.00	17.00	17.00	-	18.00
UKUNDA	35.00	35.00	38.00	35.00	35.00	30.00	25.00	25.00	-	-	-	-
WUNDANYI	-	-	14.00	14.00	13.00	-	-	-	-	-	-	-
MWEMBE TAYARI	20.00	20.00	23.67	30.00	20.00	20.00	20.00	18.00	-	-	-	-
SEGA	20.00	20.00	20.00	22.00	20.00	-	-	-	-	-	-	-
KONGOWEA	15.00	15.00	-	15.00	14.00	14.50	14.00	-	-	-	-	-
GARSEN	-	20.00	25.00	-	-	-	20.00	20.00	25.00	-	-	-
BURA TANA	20.00	20.00	20.00	40.00	20.00	-	-	-	-	-	-	-
RUNYENJES	17.50	17.50	15.00	15.00	15.00	12.50	10.00	12.50	12.50	12.50	15.00	12.50
EMBU TOWN	17.50	17.50	15.00	12.50	12.50	12.00	12.50	12.50	12.50	12.50	15.00	15.00
SIKAGO	20.00	17.50	12.50	12.50	12.50	-	11.75	11.50	11.50	15.00	15.00	15.00
MWINGI	15.00	16.00	15.00	8.00	-	15.00	15.00	10.00	15.00	-	-	-
MIGGWAINI	17.00	16.00	7.27	10.00	10.00	10.00	12.00	12.00	-	12.00	13.00	-
MACHAKOS TOWN	18.18	-	12.00	12.00	5.71	10.00	10.00	12.00	12.00	13.00	-	-
TALA	12.00	9.77	9.38	9.50	10.00	9.52	9.00	20.00	10.00	10.00	-	-
MAUA	-	25.00	16.25	12.50	15.00	13.75	12.50	-	-	-	-	-
KIANJAI	17.78	17.78	10.00	12.50	11.11	11.11	8.89	-	-	-	-	-
GAKOROMERE	16.00	13.64	8.00	9.09	9.09	10.91	9.09	9.09	9.09	12.00	11.82	11.82
WOTE	17.00	15.00	14.00	11.00	11.00	12.00	12.00	12.00	14.00	14.00	-	17.00
GARISA TOWN	29.63	16.67	16.67	16.67	16.67	16.67	16.67	-	15.00	-	-	-
DARAJA MBILI	13.33	14.29	13.64	14.29	14.29	13.64	12.83	11.36	13.33	14.29	9.52	17.62
KIBIRIGO	16.67	-	-	-	-	16.67	11.90	-	13.33	-	-	-
NYANGUSU	14.29	9.11	10.87	11.90	13.10	10.04	10.87	11.90	9.52	14.29	11.90	13.33
RIOHANDA	13.33	-	-	-	22.62	-	-	16.67	-	-	-	-
NYABITE	15.48	-	-	-	14.29	-	-	14.29	-	-	-	-
MOGONGA	12.38	10.87	10.43	11.90	12.38	13.33	11.74	9.52	9.52	11.90	15.00	14.29
NYAMACHE	14.29	12.10	10.00	14.29	11.90	11.56	10.87	11.90	11.90	-	12.38	14.29
KIBUYE	16.67	14.09	14.32	15.71	-	-	-	-	-	-	-	-
AHERO	-	-	-	-	-	-	-	-	-	-	-	16.67
KIBOSWA	16.19	15.71	14.09	15.24	-	-	-	-	-	-	-	-
SONDU	14.55	13.64	13.64	-	-	-	-	-	-	-	16.67	16.67
BONDO	15.00	15.40	17.50	17.50	14.07	15.00	15.00	16.50	16.50	16.50	16.50	-
OYUGIS	12.38	13.33	-	-	16.19	-	15.71	-	-	-	-	-
KEHACHA	15.91	13.64	-	-	-	-	-	-	-	-	-	-
KABARNET	15.00	-	15.00	15.00	15.56	15.00	-	-	-	-	-	-
NAKURU TWON	22.22	22.22	22.22	22.22	22.22	22.22	22.22	22.22	22.22	22.22	22.22	22.22
KAPSABET	13.04	13.04	13.04	14.29	15.22	15.22	16.67	-	-	-	-	-
KITALE	-	17.50	16.50	14.29	15.00	14.76	17.50	17.50	17.50	-	-	-
ELDORET	13.33	13.18	13.64	15.24	18.50	17.50	19.00	17.50	14.00	15.00	14.00	12.50
BURN FOREST	-	10.40	13.46	16.67	11.00	0.50	20.00	13.50	12.80	14.00	14.00	12.00
TURBO	11.43	11.15	10.00	11.43	11.90	17.62	14.00	17.20	16.80	12.00	12.00	-
KIPKAREN	12.86	12.03	12.00	15.00	16.50	17.50	17.50	17.50	16.50	10.40	13.95	10.80
ITEN	11.90	25.00	26.25	11.90	-	-	-	-	20.00	17.50	-	-
KAJIADO TOWN	20.00	20.00	-	20.00	20.00	20.00	20.00	20.00	25.00	20.00	25.00	-
KAPKATENY	12.52	13.67	13.56	14.29	17.14	17.14	17.14	17.62	14.29	11.90	11.90	-
BUNGOMA TOWN	14.29	13.97	13.64	15.24	13.64	-	-	-	-	14.55	13.64	14.29
KIMILILI	13.33	13.67	12.85	14.29	-	15.71	16.67	15.71	16.67	11.90	13.33	14.29
KAPSOKWONY	13.10	13.34	14.04	15.24	18.10	18.10	17.14	18.10	14.29	13.33	14.29	12.38
BUTERE	-	-	14.70	14.55	15.91	16.52	15.71	-	-	-	-	-
KAKAMEGA	13.97	13.97	13.64	15.24	15.24	16.29	15.91	13.64	13.64	12.73	13.64	13.64
MUMIAS	-	-	14.69	14.65	15.71	16.67	17.00	-	-	-	-	-
MUNDETA	14.29	14.29	14.29	14.29	15.24	15.24	15.24	14.29	14.29	-	15.24	14.29
CHEPTULA	14.29	14.29	14.29	15.24	15.24	-	14.29	13.33	-	15.24	14.29	14.29
Mbale	14.29	13.64	13.64	14.29	-	15.24	15.24	14.29	14.55	14.55	13.64	14.29
KAWANGWARE	22.00	20.00	20.00	20.00	30.00	21.05	19.05	20.00	19.05	18.10	18.28	20.00
BURMA	20.00	20.00	22.00	22.00	22.00	20.00	20.00	20.00	20.00	20.00	22.00	25.00
KIKOMBA	19.05	19.00	20.00	19.00	18.18	20.00	18.18	20.00	19.05	17.14	20.00	20.45
KANGEMI	19.49	20.50	19.05	19.00	20.00	20.00	20.00	20.00	18.18	19.05	20.00	20.45
KOROKOCHO	17.95	19.50	20.00	19.00	20.00	18.18	18.18	19.00	16.36	19.50	19.05	20.00
TOI	21.00	20.10	17.95	17.50	29.21	17.39	16.67	16.67	15.00	15.38	17.14	18.18
<b>Overall Average Prices</b>	<b>16.92</b>	<b>16.60</b>	<b>15.88</b>	<b>16.00</b>	<b>16.32</b>	<b>15.84</b>	<b>15.48</b>	<b>15.79</b>	<b>15.45</b>	<b>15.09</b>	<b>15.43</b>	<b>15.93</b>

Source: Kenya National Bureau of Statistics

- : Data not available

\*\* Provisional results

Table 8(b): Average Monthly Retail Prices for Dry Maize in the Year 2008

	KSh.per Kg						
Markets	January	February	March	April	May	June	July
KIAMBU	20.0	20.0	20.0	19.2	25.0	30.0	26.3
LIMURU	17.5	17.5	17.5	22.5	25.0	26.3	-
THIKA	19.7	21.9	16.7	19.1	18.2	-	-
GATUNDU	17.9	23.8	23.8	19.1	19.1	-	-
MUTHITHI	19.1	14.6	-	21.1	24.9	24.0	-
MUKUYU	17.5	18.4	17.7	20.3	24.4	27.5	28.6
KIRIAINI	16.7	16.7	19.1	19.1	25.4	28.6	31.0
ENGINEER	15.0	-	15.9	-	-	-	-
NANYUKI	18.2	18.5	20.0	22.5	24.0	24.4	22.5
NYAHURURU	20.0	20.0	17.5	17.7	20.0	20.0	22.5
MARIAKANI	20.0	20.0	20.0	23.5	25.0	25.0	25.0
KALOLENI	20.0	20.0	20.7	24.5	25.0	25.0	25.0
MALINDI	27.8	27.8	27.8	26.9	28.4	30.0	-
KIBAUNI KILIFI	20.0	20.0	20.7	25.0	25.0	25.0	27.0
UKUNDA	15.0	-	-	-	-	-	-
MWEMBE TAYARI	25.0	20.0	-	-	-	-	-
SEGA	24.0	-	-	-	-	-	-
KONGOWEA	25.0	20.0	-	-	-	-	-
GARSEN	25.0	22.5	20.0	23.3	25.0	30.0	-
RUNYENJES	15.0	15.0	19.2	20.0	20.0	-	-
EMBU TOWN	17.5	18.8	15.0	20.0	20.0	-	-
SIKAGO	17.5	17.5	15.0	17.5	18.5	23.8	-
MWINGI	16.0	16.0	16.0	16.5	19.0	-	-
MIGGWAINI	-	-	14.0	14.0	17.8	21.0	-
KALUNDU	15.0	16.0	17.0	-	-	-	-
MACHAKOS TOWN	16.0	17.0	17.0	-	-	-	-
TALA	16.0	18.0	17.0	15.7	17.1	-	-
MAUA	-	-	21.3	25.0	25.0	-	-
KIANJAI	-	-	16.7	19.5	-	-	-
GAKOROMERE	13.6	16.0	12.7	13.6	15.1	-	18.2
WOTE	17.0	17.0	18.0	18.0	20.0	22.0	-
GARISA TOWN	-	-	25.0	-	30.3	-	-
DARAJA MBILI	17.3	20.5	18.6	20.0	23.0	24.5	22.7
KIBIRIGO	-	20.5	20.5	-	-	-	-
NYANGUSU	14.3	-	16.7	-	-	31.0	-
RIOCHANDA	-	16.8	21.4	-	-	-	-
NYABITE	-	16.0	20.5	-	-	-	-
MOGONGA	14.3	14.3	-	-	-	31.0	-
NYAMACHE	16.7	17.1	17.5	-	-	31.0	-
KIBUYE	-	17.3	18.2	21.4	-	-	-
AHERO	23.8	22.7	-	-	-	-	-
KIBOSWA	-	19.1	20.5	-	-	-	-
SONDU	20.5	20.5	-	-	-	-	-
BONDO	-	20.0	20.0	30.0	25.0	25.5	27.5
SIAYA	22.7	16.4	19.6	-	-	-	-
NGIYA	18.2	22.7	17.3	-	-	-	-
UNGUNJA	22.7	15.2	17.3	18.2	-	-	-
OYUGIS	-	18.6	20.0	-	-	-	-
KEHACHA	-	17.5	20.0	21.2	24.4	25.0	-
KABARNET	15.0	15.0	15.0	17.2	22.8	25.0	25.0
NAKURU TWON	24.2	21.7	22.2	22.2	22.2	-	-
KAPSABET	-	19.1	19.1	25.0	23.9	25.5	25.7
KITALE	-	17.5	17.5	25.0	26.7	24.1	25.8
ELDORET	20.0	15.4	15.0	15.5	19.4	22.0	22.0
BURN FOREST	12.5	15.0	15.0	-	-	-	-
TURBO	13.3	13.4	25.0	16.7	18.5	20.7	20.7
KIPKAREN	15.0	16.0	16.1	25.0	27.0	26.3	29.4
KAJIADO TOWN	25.0	20.0	-	25.0	36.3	21.7	25.0
BUNGOMA TOWN	16.7	16.7	16.7	16.6	20.4	26.0	24.6
KIMILILI	-	-	-	16.2	21.8	27.7	27.5
KAPSOKWONY	-	16.2	17.5	-	-	-	-
BUTERE	-	23.6	17.4	23.9	23.1	24.3	-
KAKAMEGA	20.5	18.2	-	-	-	-	-
MUMIAS	-	-	28.6	26.2	23.1	23.9	-
MUNDETA	19.1	16.7	16.7	19.1	26.2	-	-
CHEPTULA	23.8	16.7	16.7	21.4	-	-	-
Mbale	23.8	16.7	-	-	-	-	-
KAWANGWARE	21.0	22.0	25.0	46.5	30.0	28.6	28.6
BURMA	25.0	25.0	25.0	32.5	25.0	25.0	33.3
KIKOMBA	21.5	22.0	22.0	23.5	26.3	35.0	35.0
KANGEMI	22.0	22.5	23.0	23.0	27.3	30.0	30.0
KOROKOCHO	20.0	20.0	21.5	23.0	21.1	26.2	38.9
TOI	21.4	21.4	23.8	23.8	20.2	28.8	28.8
<b>Overall Average Prices</b>	<b>19.5</b>	<b>18.7</b>	<b>19.1</b>	<b>21.0</b>	<b>22.9</b>	<b>25.4</b>	<b>25.8</b>

Source: Kenya National Bureau of Statistics

- data not available

Table 8(c): Average Monthly Retail Prices for Dry Beans Prices (2007)

MARKETS	Ksh. Per Kg.											
	Jan	Feb	Mar	April	May	June	July	Aug	Sep	Oct	Nov	Dec
KIAMBU	30.95	29.76	28.57	28.57	28.57	33.33	38.10	38.10	35.71	38.10	38.10	-
LIMURU	40.00	35.00	45.00	40.00	37.50	40.00	35.63	26.27	35.00	35.00	50.00	-
THIKA	36.36	40.00	38.10	38.10	38.10	40.00	36.36	36.36	37.50	42.86	45.00	-
GATUNDU	38.10	35.71	38.10	38.10	35.71	38.10	38.10	38.10	38.10	38.10	-	-
MUTHITHI	34.52	38.10	38.10	40.48	38.10	38.10	35.71	-	-	-	-	-
MUKUYU	34.96	33.33	38.10	38.10	34.17	33.33	33.33	33.33	-	-	-	38.10
KIRIAINI	42.86	40.91	42.86	42.86	42.86	40.48	40.48	40.48	40.48	-	-	40.91
ENGINEER	50.00	50.00	50.00	50.00	54.55	50.00	39.50	45.00	40.00	40.00	45.00	-
NYERI	42.86	40.48	41.86	42.86	42.86	47.62	47.62	38.10	47.62	47.62	-	-
ENDARASHA	47.62	47.62	47.62	60.00	57.14	-	-	-	-	-	-	-
KARATINA	40.91	45.45	31.82	33.33	40.00	47.62	38.10	40.48	60.00	50.00	50.00	-
GAKINDU	40.00	38.10	38.10	40.00	42.86	42.86	40.00	38.10	38.10	42.50	45.00	-
NANYUKI	40.00	38.18	36.36	38.89	44.44	44.44	40.00	40.00	40.00	31.82	44.44	-
NYAHURURU	32.00	40.02	40.91	41.67	40.00	40.00	42.86	42.86	-	-	-	-
MARIAKANI	40.00	40.00	40.00	38.10	40.00	40.00	40.00	40.00	40.00	40.00	40.00	40.00
KALOLENI	42.50	45.00	40.00	40.00	40.00	40.00	40.00	40.00	40.00	40.00	40.00	45.00
MALINDI	50.00	40.00	40.00	-	40.00	40.00	40.00	40.00	40.00	-	-	-
KIBAUNI KILIFI	40.00	-	40.00	40.00	40.00	40.00	40.00	40.00	40.00	40.00	-	45.00
UKUNDA	46.00	48.00	48.00	48.00	48.00	48.67	47.50	50.00	-	-	-	-
WUNDANYI	-	-	50.00	50.00	50.00	-	-	-	-	-	-	-
MWEMBE TAYARI	38.00	41.00	42.00	42.00	42.00	40.00	42.00	42.00	-	-	-	-
MACKINON	35.00	35.00	-	-	-	-	-	-	-	-	-	-
SEGA	45.00	45.00	40.00	42.00	45.00	-	-	-	-	-	-	-
KONGOWEA	35.00	35.00	36.00	36.00	38.00	40.00	38.00	-	-	-	-	-
HOLA	40.00	40.00	55.00	45.00	-	-	-	-	-	-	-	-
GARSEN	-	40.00	40.00	40.00	-	-	50.00	40.00	40.00	-	-	-
BURA TANA	50.00	50.00	45.00	40.00	40.00	-	-	-	-	-	-	-
RUNYENJES	37.50	35.00	37.50	35.00	35.00	30.00	30.00	30.00	35.00	40.00	37.50	37.50
EMBU TOWN	37.50	35.00	30.00	37.50	42.50	33.33	30.00	35.00	32.50	40.00	40.00	50.00
SIKAGO	30.00	30.00	35.00	30.00	27.50	-	30.00	30.00	27.50	45.00	45.00	50.00
MWINGI	35.00	35.00	35.00	20.00	-	35.00	35.00	25.00	35.00	-	-	-
MIGGWAINI	27.27	22.73	22.73	40.00	25.00	25.00	25.00	25.00	-	40.00	45.00	-
MACHAKOS TOWN	38.89	-	35.00	36.84	40.00	40.00	35.00	40.00	40.00	40.00	-	-
TALA	35.00	24.44	25.81	27.14	28.57	40.00	38.10	33.33	38.00	38.00	-	-
MAUA	-	37.50	35.00	31.25	33.75	30.00	43.75	-	-	-	-	-
KIANJAI	30.00	27.78	27.78	31.25	24.44	24.44	35.56	-	-	-	-	-
GAKOROMERE	35.00	30.46	36.36	36.36	36.36	36.36	36.36	36.36	36.36	36.36	40.00	40.00
WOTE	35.00	35.00	35.00	40.00	40.00	35.00	40.00	42.00	42.00	45.00	-	45.00
GARISA TOWN	45.75	47.06	47.06	47.06	47.06	44.44	47.06	-	47.06	-	-	-
DARAJA MBILI	28.57	27.27	21.82	33.33	33.33	30.43	27.72	34.09	38.10	33.33	30.95	38.10
KIBIRIGO	32.67	29.55	-	-	-	38.10	38.10	-	-	-	-	-
KEROKA	-	29.55	-	-	-	-	-	-	-	-	-	-
NYANGUSU	35.00	32.31	-	35.71	21.73	22.82	19.57	23.81	23.81	23.81	28.57	26.19
RIOHANDA	21.45	-	-	-	28.57	-	-	30.95	-	-	-	-
NYABITE	36.91	-	-	-	33.33	-	-	33.33	-	-	-	-
MOGONGA	33.33	24.00	25.00	28.57	21.43	23.16	23.00	-	30.95	28.57	30.95	30.95
NYAMACHE	30.95	26.79	28.00	-	33.33	30.20	28.13	26.19	30.95	-	28.57	28.57
KIBUYE	38.10	36.36	39.77	45.24	-	-	-	-	-	-	-	-
AHERO	-	-	-	-	-	-	-	-	-	-	47.62	47.62
KIBOSWA	40.48	37.73	41.76	52.38	-	-	-	-	-	-	-	-
SONDU	33.33	33.33	30.95	-	-	-	-	-	-	-	42.86	47.62
BONDO	45.45	46.36	46.36	50.00	34.10	45.45	45.45	54.55	59.09	54.55	54.55	-
OYUGIS	35.71	35.57	-	-	40.48	35.71	35.71	-	-	-	-	-
KEHACHA	45.00	50.00	-	-	-	-	-	-	-	-	-	-
KABARNET	30.00	-	40.00	40.00	40.00	40.00	-	-	-	-	-	-
NAKURU TWON	33.33	33.33	44.44	38.89	33.33	44.44	44.44	44.44	33.33	33.33	33.33	30.00
KAPSABET	44.99	39.07	37.35	54.55	39.13	39.13	19.05	-	-	-	-	-
KITALE	-	33.33	38.10	47.62	38.10	38.10	34.09	33.33	28.57	-	-	-
ELDORET	38.48	36.36	36.36	31.82	40.91	38.10	40.91	45.45	40.00	45.00	45.45	45.00
BURN FOREST	35.42	32.00	29.63	-	47.62	47.62	50.00	45.45	36.36	36.36	40.91	40.91
TURBO	36.60	34.42	30.00	35.71	38.10	33.33	30.00	22.73	30.00	-	34.09	-
KIPKAREN	33.33	32.58	36.36	38.10	36.36	36.61	31.82	32.50	32.50	36.36	35.68	36.36
ITEN	38.10	38.10	38.10	-	-	-	-	-	50.00	35.00	-	-
KAJIADO TOWN	50.00	45.00	-	40.00	44.44	44.44	44.81	40.00	40.00	20.00	60.00	-
BUNGOMA TOWN	38.10	36.76	40.00	36.36	47.62	-	-	-	-	36.36	36.36	36.36
KIMILILI	28.57	30.93	30.84	30.95	-	33.33	30.00	26.19	28.57	33.33	36.36	40.91
KAPSOKWONY	32.86	33.99	36.07	38.10	38.10	38.10	38.10	34.85	-	33.33	36.36	36.36
BUTERE	-	-	29.55	35.57	34.09	30.43	33.33	-	-	-	-	-
KAKAMEGA	34.90	37.23	36.36	42.86	38.10	37.23	29.55	40.91	45.45	47.73	45.45	45.45
MUMIAS	-	-	37.37	36.23	31.41	33.33	-	-	-	-	-	-
MUNDETA	39.13	39.13	38.10	38.10	42.86	38.10	38.10	38.10	38.10	-	38.10	52.38
CHEPTULA	39.13	34.78	38.10	38.10	35.71	-	38.10	38.10	-	47.62	40.48	47.62
Mbale	41.30	41.30	39.13	42.86	-	45.24	40.91	45.45	45.45	45.45	54.55	54.55
KAWANGWARE	42.11	40.00	40.00	40.00	30.00	38.10	40.00	40.00	45.00	43.64	45.00	20.45
BURMA	45.00	42.00	80.00	40.00	40.00	40.00	40.00	40.00	40.00	42.00	42.00	45.00
KIKOMBA	41.03	40.00	40.00	38.10	42.11	40.00	39.05	38.10	36.36	38.10	40.00	40.00
KANGEMI	42.50	40.82	40.20	40.00	40.00	38.10	41.00	40.00	40.91	40.91	40.48	45.24
KOROKOCHO	40.00	40.00	40.00	40.00	38.10	39.05	40.00	40.00	38.10	40.00	40.00	40.00
TOI	40.82	40.00	40.40	40.00	40.00	38.10	38.28	38.10	40.00	42.86	21.43	45.00
<b>Overall Average Prices</b>	<b>38.06</b>	<b>37.17</b>	<b>38.32</b>	<b>39.27</b>	<b>38.23</b>	<b>37.87</b>	<b>37.19</b>	<b>37.22</b>	<b>38.64</b>	<b>39.24</b>	<b>40.88</b>	<b>40.97</b>

'Source: Kenya National Bureau of Statistics

- : Data not available

Table 8(d): Average Monthly Retail Prices for Dry Beans Prices (2008)

Markets	January	February	March	April	May	June	July
KIAMBU	38.10	35.71	35.50	60.00	71.67	75.00	57.50
LIMURU	75.00	60.00	60.00	70.00	75.00	70.00	-
THIKA	55.00	54.55	54.55	45.45	60.00	-	-
GATUNDU	39.30	45.24	42.86	47.62	38.10	-	-
MUTHITHI	57.14	52.38	-	55.36	61.81	56.67	-
MUKUYU	38.10	38.10	56.06	59.09	59.14	59.09	59.09
KIRIAINI	47.83	47.83	63.64	-	60.87	60.87	66.67
ENGINEER	45.00	-	57.14	-	-	-	-
NANYUKI	40.00	42.50	50.00	65.00	46.67	69.82	70.83
NYAHURURU	39.13	50.00	56.19	63.75	67.50	38.34	60.00
MARIAKANI	50.00	60.00	60.00	60.00	63.33	70.00	70.00
KALOLENI	50.00	60.00	60.00	60.00	63.33	70.00	70.00
MALINDI	70.59	75.00	68.18	72.22	76.38	78.16	-
KIBAUNI KILIFI	60.00	60.00	65.00	53.33	66.67	70.00	68.00
UKUNDA	50.00	-	-	-	-	-	-
MWEMBE TAYARI	60.00	48.00	-	-	-	-	-
SEGA	55.00	-	-	-	-	-	-
KONGOWEA	70.00	55.00	-	-	-	-	-
GARSEN	50.00	55.00	60.00	60.00	60.00	70.00	-
RUNYENJES	45.00	41.25	68.81	55.00	57.50	-	-
EMBU TOWN	40.00	40.00	50.00	60.00	60.00	50.00	-
SIKAGO	40.00	42.50	50.00	55.00	53.60	63.64	-
MWINGI	40.00	40.00	50.00	60.00	50.00	-	-
MIGGWAINI	-	-	40.00	55.00	55.00	55.00	-
KALUNDU	50.00	58.00	70.00	-	-	-	-
MACHAKOS TOWN	55.00	45.00	45.00	-	-	-	-
TALA	27.00	40.00	40.00	55.67	57.14	-	-
MAUA	-	-	62.50	67.81	62.50	-	-
KIANJAI	-	-	50.00	56.67	-	-	-
GAKROMERE	36.36	40.91	55.00	50.00	55.46	-	60.61
WOTE	50.00	52.50	60.00	68.00	64.50	61.50	-
GARISA TOWN	-	-	66.67	-	70.84	-	-
DARAJA MBILI	40.91	54.55	46.43	61.36	48.90	39.06	41.07
KIBIRIGO	-	45.45	47.62	-	-	-	-
NYANGUSU	28.57	-	42.86	-	-	54.55	-
RIOCHANDA	-	46.15	54.55	-	-	-	-
NYABITE	-	42.31	54.55	-	-	-	-
MOGONGA	38.10	36.36	-	-	-	54.55	-
NYAMACHE	27.27	47.62	40.18	-	-	52.27	-
KIBUYE	-	65.91	68.18	68.18	-	-	-
AHERO	61.90	61.90	-	-	-	-	-
KIBOSWA	-	77.27	76.19	-	-	-	-
SONDU	52.38	52.38	-	-	-	-	-
BONDO	-	85.00	85.00	69.17	85.00	87.50	80.00
SIAYA	54.55	53.03	90.91	-	-	-	-
NGIYA	47.17	54.55	68.18	-	-	-	-
UNGUNJA	45.45	52.27	51.14	72.73	-	-	-
OYUGIS	-	66.38	71.43	-	-	-	-
KEHACHA	-	54.55	68.18	66.67	59.09	54.55	-
KABARNET	50.00	50.00	50.00	59.59	72.32	75.00	75.00
NAKURU TWON	52.22	38.89	38.89	51.11	36.11	38.89	-
KAPSABET	-	71.43	68.18	72.73	71.02	60.87	46.52
KITALE	-	54.05	54.55	68.18	74.36	68.19	49.51
ELDOROT	59.09	43.19	68.18	75.21	78.00	63.00	62.50
BURN FOREST	68.18	68.18	60.91	-	-	-	-
TURBO	42.50	53.75	-	70.00	73.75	67.00	53.00
KIPKAREN	45.45	54.55	54.55	68.18	62.50	60.60	36.97
KAJIADO TOWN	60.00	70.00	80.00	60.00	67.50	66.67	50.00
BUNGOMA TOWN	47.62	61.90	68.18	-	60.59	64.77	65.24
KIIMILILI	-	-	-	46.67	67.14	66.67	80.00
KAPSOKWONY	-	40.48	47.01	-	-	-	-
BUTERE	55.80	62.29	50.79	73.91	70.51	53.02	-
KAKAMEGA	54.55	68.18	-	-	-	-	-
MUMIAS	-	-	-	70.46	70.10	58.37	-
MUNDETA	71.43	71.43	71.43	71.43	61.90	-	-
CHEPTULA	65.04	71.43	71.43	71.43	-	71.43	-
Mbale	-	65.22	-	-	-	-	-
KAWANGWARE	45.00	50.00	60.00	-	70.00	72.73	76.19
BURMA	45.00	50.00	50.00	60.00	70.00	80.00	80.00
KIKOMBA	48.00	50.00	60.00	65.00	80.00	75.00	83.33
KANGEMI	45.00	55.00	65.00	70.00	75.00	80.00	80.00
KOROKOCHO	43.50	45.00	50.00	62.50	62.50	72.73	72.73
TOI	47.62	50.00	63.64	72.73	76.19	76.19	76.19
Overall Average Price	50.11	53.15	57.23	62.05	65.08	63.84	60.35

Table 9: Export of Coffee, Tea and Horticultural Produce

Month	COFFEE *		TEA		HORTICULTURE	
	QUANTITY	VALUE	QUANTITY	VALUE	QUANTITY	VALUE
	(MT)	(KSh. Million)	(MT)	(KSh. Million)	(MT)	(KSh. Million)
Jan-07	2,462.4	452.6	35,974.2	4,704.5	14,495	4,626.7
Feb-07	3,388.2	653.4	36,657.9	4,635.4	14,603	6,023.8
Mar-07	4,916.1	1,032.7	35,964.8	4,607.9	16,108	7,128.5
Apr-07	4,482.2	963.4	27,183.5	3,417.6	15,654	4,149.0
May-07	4,860.7	951.6	36,849.3	4,519.4	15,667	4,103.8
Jun-07	8,164.9	1,544.7	32,313.5	3,936.6	13,778	7,988.3
Jul-07	6,052.2	1,105.2	33,697.5	4,231.6	16,306	4,915.9
Aug-07	5,903.5	939.9	28,670.6	3,596.1	15,581	6,842.6
Sep-07	7,866.0	1,429.4	39,337.0	5,093.0	16,099	3,729.1
Oct-07	4,698.5	875.8	25,858.0	3,410.1	18,727	5,489.6
Nov-07	3,665.5	689.1	31,356.6	3,979.6	18,249	6,773.7
Dec-07	3,248.1	630.3	20,102.0	2,433.7	16,881	5,482.9
Jan-08	2,698.8	558.4	28,790.2	4,054.6	16,553	6,683.9
Feb-08	3,270.3	812.7	32,723.0	5,303.6	18,901	9,719.5
Mar-08	3,989.2	1,071.0	27,943.7	4,308.3	18,927	6,538.4
Apr-08	4,611.3	1,107.7	40,724.4	5,464.0	17,969	4,256.8
May-08	4,820.5	1,128.1	30,518.6	4,525.4	16,940	4,051.8
Jun-08	3,602.7	838.6	31,644.4	4,917.2	15,312	3,479.9
Jul-08	3,158.5	769.2	40,370.6	6,667.2	15,262	3,882.0

**Source: Customs and Horticultural Crop Development Authority**

- Figures not available

\* Coffee, not Roasted

\*\* Provisional

- data not available

MT denotes Metric tonnes

Table 10: Monthly Exports of Horticultural Products

Months	CUT FLOWERS				FRUITS				VEGETABLES			
	2007**		2008**		2007**		2008**		2007**		2008**	
	QUANTITY (MT)	VALUE (KSh. Million)	QUANTITY (MT)	VALUE (KSh. Million)	QUANTITY (MT)	VALUE (KSh. Million)	QUANTITY (MT)	VALUE (KSh. Million)	QUANTITY (MT)	VALUE (KSh. Million)	QUANTITY (MT)	VALUE (KSh. Million)
January	7,380	3,015.93	8,494.94	5,288.07	1,224.93	195.16	533.40	63.05	5,889.41	1,415.57	7,524.88	1,332.79
February*	7,908	2,853.19	10,178.52	6,806.08	1,753.77	182.45	1,431.75	111.22	4,941.00	2,988.19	7,290.64	2,802.23
March	9,016	5,534.80	9,116.38	4,836.41	1,798.53	198.26	2,476.80	203.31	5,293.65	1,395.41	7,334.14	1,498.72
April	7,944	2,134.58	8,100.43	2,737.35	1,399.79	171.23	2,263.94	180.92	6,310.19	1,843.24	7,604.86	1,338.55
May	8,020	2,095.95	8,120.99	2,798.79	1,219.97	131.32	1,727.73	130.44	6,427.08	1,876.49	7,090.86	1,122.58
June	6,292	6,023.82	6,785.27	2,173.12	1,126.85	202.73	1,718.46	169.36	6,358.88	1,761.76	6,808.71	1,137.46
July	5,741	2,735.92	6,083.05	2,072.24	1,759.63	176.76	2,573.05	686.15	8,805.25	2,003.21	6,605.48	1,123.60
August	6,136	4,360.81			2,386.14	184.39			7,058.62	2,297.37		
September	7,088	2,210.74			1,400.32	126.50			7,610.32	1,391.86		
October	8,571	3,581.57			675.46	88.94			9,480.67	1,819.08		
November	8,540	4,590.68			401.30	62.11			9,307.21	2,120.86		
December	8,515	3,963.55			524.77	78.06			7,840.96	1,441.26		
<b>Total</b>	<b>91,152</b>	<b>43,102</b>			<b>15,671</b>	<b>1,798</b>			<b>85,323</b>	<b>22,354</b>		

Source: Horticultural Crops Development Authority

- data not available

\*\* Figures subject to revision

Table 11: Kenya's External Trade, July 2007 – July 2008

KSh million						
MONTH	Domestic Exports	Re-Exports	Total Exports	Total Imports	Volume of Trade	Home use Imports
<b>2007</b>						
July	22,673.25	1,011.29	23,684.54	53,190.58	76,875.12	52,793.97
August	22,940.52	950.11	23,890.63	52,604.06	76,494.69	52,283.38
September	20,258.79	1,005.65	21,264.45	48,460.16	69,724.61	48,601.46
October	23,516.06	1,168.19	24,684.25	59,049.87	83,734.12	55,189.14
November	24,970.24	1,103.51	26,073.75	57,731.91	83,805.65	53,993.58
December	16,940.05	1,125.93	18,065.98	37,757.37	55,823.34	41,857.30
<b>2008</b>						
January	22,767.81	985.72	23,753.53	64,341.01	88,094.54	56,488.85
February	31,277.01	1,050.16	32,327.17	58,051.43	90,378.61	56,707.94
March	25,654.53	1,460.93	27,115.46	53,200.79	80,316.25	52,191.67
April	27,893.33	1,292.86	29,186.19	54,785.45	83,971.64	51,389.44
May	24,436.30	1,303.31	25,739.61	56,877.43	82,617.03	57,151.43
June	23,832.87	1,477.07	25,309.94	49,957.26	75,267.20	53,371.94
July	28,667.31	1,671.58	30,338.89	70,300.09	100,638.98	60,557.64

Source: Customs Department

\* Provisional

Table 12: Major Destinations of Domestic Exports, July 2007 – July 2008

KSh Million

Month	Uganda	Tanzania	United Kingdom	Pakistan	Netherlands	Egypt	Germany	Rwanda	USA	United Arab Emirates	France
<b>2007</b>											
July	2,374.16	1,903.18	2,338.07	1,350.60	1,792.98	434.56	587.58	439.37	1,506.16	788.89	319.68
August	3,307.83	1,965.68	2,373.45	896.23	1,373.62	477.61	436.18	487.93	1,706.02	766.11	321.59
September	2,523.28	1,748.56	2,320.75	898.54	1,523.81	594.43	282.15	489.78	1,303.41	740.85	445.35
October	2,645.69	1,810.40	3,063.69	550.16	2,180.57	645.14	528.35	713.51	1,562.34	1,133.98	433.64
November	3,224.78	1,952.63	2,810.58	838.45	2,046.09	857.27	571.37	540.50	1,643.20	1,203.54	452.48
December	1,766.75	1,257.42	2,025.86	535.16	1,503.12	438.06	569.63	364.82	1,341.31	570.10	299.66
<b>2008</b>											
January	2,599.18	1,705.11	3,423.94	791.97	2,728.84	580.95	562.45	345.54	1,241.43	545.50	426.52
February	3,292.99	1,973.99	3,853.97	1,030.52	2,878.64	1,306.73	666.82	743.15	1,975.69	804.75	372.62
March	3,063.24	1,756.01	3,118.21	683.00	2,256.37	1,545.47	591.34	505.26	1,371.59	784.62	389.71
April	3,656.76	2,130.95	2,892.92	924.21	2,044.85	2,102.05	528.64	502.74	1,634.07	845.66	429.07
May	2,564.19	1,873.91	2,998.92	1,306.61	2,005.69	663.55	421.87	439.56	1,509.75	623.16	305.94
June	2,409.80	2,173.29	2,867.54	1,171.98	2,100.71	668.94	447.39	556.14	1,661.92	517.39	362.69
July	3,810.84	2,371.58	3,187.84	2,042.81	1,692.87	990.34	372.82	792.28	1,590.02	522.07	525.91

Source: Customs Department

\* Provisional

Table 13: Major Origins of Imports, July 2007-July 2008

KSh Million											
Month	United Arab Emirates	United Kingdom	South africa	Saudi Arabia	Japan	India	USA	Germany	Netherlan ds	France	China
<b>2007</b>											
July	8,558.70	3,109.16	2,656.87	1,045.34	3,517.14	3,279.75	2,869.76	2,125.78	888.07	1,502.37	4,890.09
August	9,622.73	2,059.30	3,496.57	844.11	3,671.30	4,810.22	1,704.90	1,724.03	631.62	2,810.53	4,772.91
September	6,899.09	3,079.21	2,763.51	763.47	4,092.03	5,099.49	1,078.67	2,547.32	902.71	962.63	4,015.59
October	9,122.97	2,775.45	3,378.61	3,460.34	3,707.38	8,298.77	1,978.18	2,421.37	771.97	1,789.51	4,817.74
November	12,480.07	2,511.87	4,365.40	688.16	4,208.35	5,525.63	1,729.25	2,024.66	479.27	953.28	4,927.13
December	2,545.08	1,215.17	2,824.88	1,110.78	3,350.12	2,896.46	1,801.02	1,102.05	903.19	1,082.24	3,103.81
<b>2008</b>											
January	13,324.16	2,163.69	3,939.42	1,195.25	3,997.79	6,778.99	1,498.30	1,779.34	805.11	1,979.94	6,075.25
February	9,510.89	2,921.46	3,210.71	945.31	3,482.08	5,138.42	2,033.86	2,603.10	1,327.21	1,356.22	4,770.77
March	6,839.39	1,746.01	3,066.48	4,363.49	3,487.52	6,476.49	2,984.79	1,866.69	577.86	1,042.04	3,428.89
April	12,274.48	1,749.26	3,155.40	2,319.25	3,484.89	5,981.93	2,910.16	1,921.65	1,369.27	1,020.72	3,311.61
May	10,534.04	1,873.07	3,005.93	1,302.39	3,035.20	9,281.27	3,606.34	1,482.98	885.92	879.66	4,430.19
June	3,515.33	1,835.13	3,312.94	844.12	2,904.38	6,384.15	1,442.66	1,583.49	1,066.24	888.67	5,213.39
July	19,339.13	1,774.91	3,886.96	2,048.11	4,811.18	7,921.31	2,628.53	2,189.02	652.05	1,156.11	4,678.81

Source: Customs Department

\* Provisional

Table 12 (a): Domestic Exports by Broad Economic Category

Million KSh

DESCRIPTION	2007							2008						
	July	August	Sept	October	Nov	December	Total	January	February	March	Apr	May	June	July
FOOD AND BEVERAGES .. .. .	9,470	8,765	8,114	9,111	9,537	6,828	<b>105,765</b>	9,081	11,620	10,261	12,176	10,249	10,155	12,300
INDUSTRIAL SUPPLIES (Non-Food) ..	6,380	6,350	5,158	5,940	7,386	4,452	<b>66,441</b>	5,901	7,915	6,846	6,967	6,396	6,022	8,659
FUEL AND LUBRICANTS .. .. .	627	1,338	646	737	465	251	<b>9,346</b>	305	1,762	352	487	378	332	268
MACHINERY & OTHER CAPITAL EQUIPMENT ..	264	289	487	526	500	366	<b>4,427</b>	279	676	701	674	526	225	324
TRANSPORT EQUIPMENT .. .. .	393	352	270	407	278	131	<b>3,472</b>	167	339	235	336	232	430	385
CONSUMER GOODS NOT ELSEWHERE SPECIFIED ..	5,539	5,846	5,581	6,793	6,804	4,912	<b>72,161</b>	7,035	8,965	7,256	7,255	6,654	6,661	6,730
GOODS NOT ELSEWHERE SPECIFIED ..	0.00	1.00	3.00	2.00	0.00	0.00	<b>7</b>	0.00	0.00	4.00	0	0	8	0
<b>TOTAL .. .. .</b>	<b>22,673</b>	<b>22,940</b>	<b>20,259</b>	<b>23,516</b>	<b>24,970</b>	<b>16,940</b>	<b>261,619</b>	<b>22,768</b>	<b>31,277</b>	<b>25,655</b>	<b>27,893</b>	<b>24,436</b>	<b>23,833</b>	<b>28,666</b>
PERCENTAGE SHARES:														
Food and Beverages .. .. .	41.77	38.21	40.05	38.74	38.19	40.31	40.43	39.88	37.15	40.00	43.65	41.94	42.61	42.91
Industrial Supplies (Non-Food) .. .. .	28.14	27.68	25.46	25.26	29.58	26.28	25.40	25.92	25.31	26.68	24.98	26.17	25.27	30.21
Fuel and Lubricants .. .. .	2.77	5.83	3.19	3.13	1.86	1.48	3.57	1.34	5.63	1.37	1.74	1.55	1.39	0.93
Machinery and other Capital Equipment ..	1.16	1.26	2.40	2.24	2.00	2.16	1.69	1.23	2.16	2.73	2.41	2.15	0.94	1.13
Transport Equipment .. .. .	1.73	1.53	1.33	1.73	1.11	0.77	1.33	0.73	1.08	0.92	1.20	0.95	1.80	1.34
Consumer Goods not elsewhere specified	24.43	25.48	27.55	28.89	27.25	29.00	27.58	30.90	28.66	28.28	26.01	27.23	27.95	23.48
Goods not elsewhere specified .. .. .	0.00	0.00	0.01	0.01	0.00	0.00	0.00	0.00	0.00	0.02	0.00	0.00	0.03	0.00
<b>TOTAL .. .. .</b>	<b>100</b>	<b>100</b>	<b>100</b>	<b>100</b>	<b>100</b>	<b>100</b>	<b>100</b>	<b>100</b>	<b>100</b>	<b>100</b>	<b>100</b>	<b>100</b>	<b>100</b>	<b>100</b>

Source: Annual Trade Report - Customs &amp; Excise Dept.

\* Provisional

- Data being verified

Table 13 (a): Imports by Broad Economic Category

Million KSh

DESCRIPTION	2007							2008						
	July	August	September	October	November	December	Total	January	February	March	Apr	May	June	July
FOOD AND BEVERAGES .. .. .	6,278.00	2,965.00	2,340.00	2,649.00	2,642.00	2,888.00	<b>42,483.1</b>	3,647.00	4,797.00	5,313.00	3,662.9	2,712.5	2,476.0	2,258.0
INDUSTRIAL SUPPLIES (Non-Food) ..	16,835.00	17,865.00	16,221.00	18,169.00	18,533.00	15,449.00	<b>193,819.3</b>	20,392.00	18,137.00	14,987.00	17,444.9	15,832.1	19,185.0	19,453.0
FUEL AND LUBRICANTS .. .. .	10,268.00	10,881.00	8,702.00	16,784.00	15,706.00	3,907.00	<b>126,911.2</b>	19,602.00	13,478.00	13,135.00	15,706.1	18,042.1	11,728.0	25,978.0
MACHINERY & OTHER CAPITAL EQUIPMENT ..	8,452.00	9,390.00	8,199.00	8,933.00	9,351.00	6,286.00	<b>97,336.5</b>	9,641.00	9,796.00	10,263.00	7,651.6	8,834.4	7,517.0	9,921.0
TRANSPORT EQUIPMENT .. .. .	6,664.00	7,407.00	8,823.00	7,460.00	6,683.00	5,950.00	<b>97,427.0</b>	6,262.00	7,666.00	5,413.00	6,575.0	7,225.9	5,035.0	8,018.0
CONSUMER GOODS NOT ELSEWHERE SPECIFIED ..	3,662.00	4,071.00	3,724.00	4,900.00	4,805.00	3,273.00	<b>44,883.8</b>	4,793.00	4,176.00	4,072.00	3,738.4	4,057.6	4,005.0	4,375.0
GOODS NOT ELSEWHERE SPECIFIED ..	1,032.00	25.00	451.00	154.00	12.00	4.00	<b>2,259.7</b>	4.00	1.00	18.00	6.6	172.9	11.0	0.0
<b>TOTAL .. .. .</b>	<b>53,191</b>	<b>52,604</b>	<b>48,460</b>	<b>59,049</b>	<b>57,732</b>	<b>37,757</b>	<b>605,120.6</b>	<b>64,341</b>	<b>58,051</b>	<b>53,201</b>	<b>54,785</b>	<b>56,877</b>	<b>49,957</b>	<b>70,003</b>
PERCENTAGE SHARES:														
Food and Beverages .. .. .	11.80	5.64	4.83	4.49	4.58	7.65	7.02	5.67	8.26	9.99	6.69	4.77	4.96	3.23
Industrial Supplies (Non-Food) .. .. .	31.65	33.96	33.47	30.77	32.10	40.92	32.03	31.69	31.24	28.17	31.84	27.84	38.40	27.79
Fuel and Lubricants .. .. .	19.30	20.68	17.96	28.42	27.21	10.35	20.97	30.47	23.22	24.69	28.67	31.72	23.48	37.11
Machinery and other Capital Equipment ..	15.89	17.85	16.92	15.13	16.20	16.65	16.09	14.98	16.87	19.29	13.97	15.53	15.05	14.17
Transport Equipment .. .. .	12.53	14.08	18.21	12.63	11.58	15.76	16.10	9.73	13.21	10.17	12.00	12.70	10.08	11.45
Consumer Goods not elsewhere specified	6.88	7.74	7.68	8.30	8.32	8.67	7.42	7.45	7.19	7.65	6.82	7.13	8.02	6.25
Goods not elsewhere specified .. .. .	1.94	0.05	0.93	0.26	0.02	0.01	0.37	0.01	0.00	0.03	0.01	0.30	0.02	0.00
<b>TOTAL .. .. .</b>	<b>100.00</b>	<b>100.00</b>	<b>100.00</b>	<b>100.00</b>	<b>100.00</b>	<b>100.00</b>	<b>100.00</b>	<b>100.00</b>	<b>100.00</b>	<b>100.00</b>	<b>100.00</b>	<b>100.00</b>	<b>100.00</b>	<b>100.00</b>

Source: Annual Trade Report - Customs &amp; Excise Dept.

\* Provisional

- Data being verified

Table 14(a): Local Electricity Generation by Source

Million KWh				
MONTH	HYDRO	GEO - THERMAL	THERMAL	TOTAL
<b>2007</b>				
July	297.8	88.8	152.7	539.30
August	300.8	88.2	151.8	540.82
September	297.2	79.1	150.6	526.93
October	305.2	82.3	154.3	541.80
November	307.4	85.8	147.5	540.70
December	299.6	82.2	128.7	510.50
<b>2008</b>				
January	287.8	88.9	93.5	470.23
February	276.9	78.1	100.2	455.13
March	290.2	84.6	115.1	489.96
April	280.6	87.6	122.6	490.76
May	291.9	87.2	118.4	497.49
June	252.63	87.74	122.54	462.91
July	250.97	88.33	140.72	480.02
August	269.21	80.39	132.15	481.75

Fig 9: Electricity Generation by Source

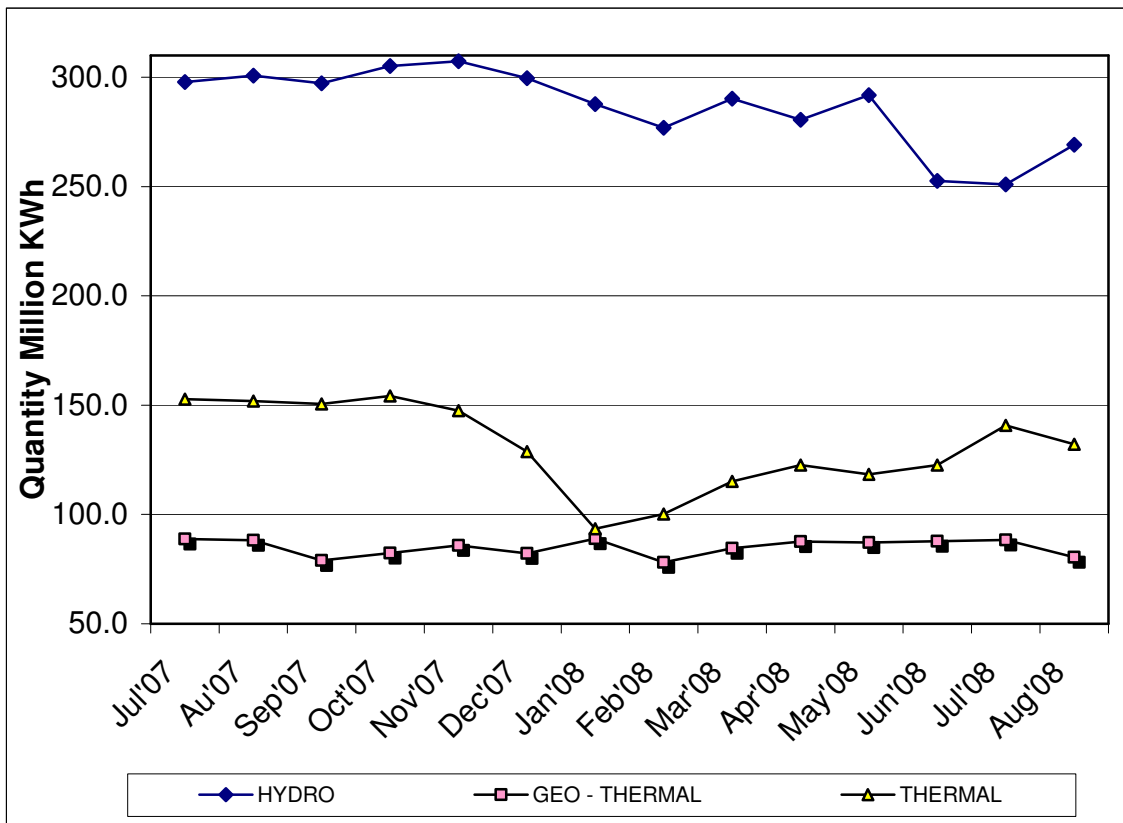


Table 14(b): Generation and Consumption of Electricity

Month	GENERATION						CONSUMPTION				
	LOCAL GENERATION	IMPORTS			EPPS (Aggreko)	TOTAL GENERATION	TOTAL KPLC SALES	RURAL ELECTRIFICATION	EXPORTS TO UGANDA	TOTAL DOMESTIC CONSUMPTION*	POWER LOSSES
		UGANDA	TANZANIA	Total Imports							
<b>2007*</b>											
July	539.3	2.24	0.05	2.3	48.1	541.6	398.0	18.21	6.71	416.2	-118.7
August	540.8	1.7	0.05	1.7	45.2	542.6	420.6	19.08	3.25	439.7	-99.6
September	526.9	2.1	0.05	2.2	45.4	529.1	432.5	18.95	4.11	451.4	-73.5
October	541.8	2.3	0.05	2.4	48.0	544.2	411.8	18.89	3.33	430.7	-110.2
November	540.7	3.0	0.09	3.1	42.6	543.8	436.5	20.26	2.97	456.7	-84.1
December	510.5	2.6	0.11	2.7	34.8	513.2	398.2	17.55	3.01	415.7	-94.5
<b>2008*</b>											
January	470.2	2.6	0.11	2.7	32.5	505.4	401.3	20.60	4.39	421.9	-79.2
February	455.1	1.7	0.10	1.8	40.9	497.8	422.1	19.82	3.35	441.9	-52.6
March	490.0	1.9	0.10	2.0	40.9	532.9	397.2	19.38	3.88	416.6	-112.4
April	490.8	1.1	0.10	1.2	46.9	538.8	415.1	19.78	10.41	434.9	-93.5
May	497.5	1.6	0.11	1.7	57.7	556.6	426.5	20.48	7.95	447.0	-101.6
June	462.9	1.7	0.11	1.8	73.6	538.3	444.1	21.17	3.64	465.3	-69.4
July	480.0	1.6	0.12	1.7	82.4	564.2	402.5	20.73	3.59	423.3	-137.3
August	481.8	2.1	0.11	2.2	77.6	561.5	448.1	21.90	2.14	470.0	-89.4

NB: Difference between amount purchased from KENGEN and imported from Uganda and consumption reflect transmission, distribution and commercial losses

Fig 10: Electricity Generation Consumption and Power Losses

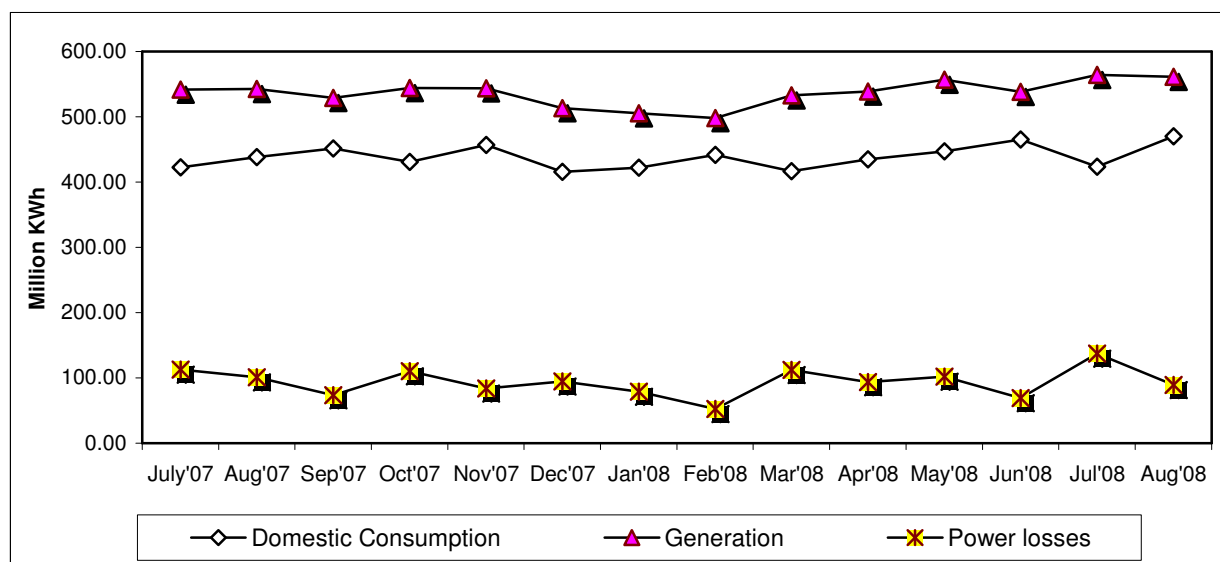


Table 14 ( c ): Consumption of Petroleum Fuels

PERIOD									'000 MT
	LIGHT DIESEL OIL	JET FUEL	FUEL OILS	MOTOR SPIRIT	ILLUMINATING KEROSENE	HEAVY DIESEL OIL	L.P.G.	AVIATION GASLENE	TOTAL FUELS
<b>2007*</b>									
March	100.8	61.9	72.6	33.7	31.8	3.3	7.7	0.22	312.1
April	100.4	49.7	49.1	26.0	21.8	3.2	6.1	0.13	256.4
May	95.6	41.4	28.6	28.9	18.5	2.6	5.3	0.06	221.0
June	100.1	51.4	99.2	36.8	35.2	7.8	8.9	0.18	339.6
July	102.7	56.2	42.4	28.2	21.2	2.4	4.6	0.18	257.7
August	94.8	54.8	57.3	31.6	20.6	2.8	9.5	0.17	271.5
September	102.4	53.0	44.5	37.5	19.0	3.8	8.5	0.16	268.8
October	87.0	55.3	57.1	31.1	21.6	2.2	5.4	0.17	259.8
November	73.0	53.7	39.3	27.5	15.0	2.0	4.1	0.15	214.8
December	96.9	56.2	55.3	33.7	24.8	3.2	6.2	0.39	276.8
<b>2008*</b>									
January	76.4	47.8	37.0	27.9	17.6	2.0	6.5	0.19	215.3
February	82.4	45.1	39.4	27.0	17.8	2.2	5.1	0.11	219.1
March	87.4	46.6	44.3	28.7	16.6	2.2	4.5	0.14	230.4
April	88.3	43.6	47.9	28.6	21.8	2.3	5.3	0.09	237.9
May	96.2	44.8	66.7	28.7	21.0	2.1	5.2	0.13	264.8
June	85.5	40.2	42.8	26.1	19.8	1.9	5.1	0.11	221.6

**Source : Ministry of Energy**

\* Sales from major oil marketing firms only

- data not available

+ Data from other Key firms not included

Table 14 (d): Weighted Average Retail Prices for Selected Fuel Products within Nairobi

PERIOD	KSh per litre			
	MOTOR GASOLINE PREMIUM	MOTOR GASOLINE REGULAR	LIGHT DIESEL OIL (GASOIL)	ILLUMINATING KEROSENE
Aug-07	80.92	80.06	70.36	58.58
Sep-07	81.79	80.67	71.33	59.01
Oct-07	83.65	82.14	73.18	60.58
Nov-07	84.82	82.63	75.07	61.73
Dec-07	85.18	82.77	75.36	62.79
Jan-08	88.57	86.57	78.40	66.77
Feb-08	90.49	88.23	80.31	68.90
Mar-08	93.40	90.52	82.79	68.77
Apr-08	95.96	92.63	85.62	71.27
May-08	96.87	95.15	87.91	71.74
Jun-08	102.34	98.74	95.70	78.87
Jul-08	106.10	101.52	100.21	85.43
Aug-08	108.20	103.32	103.10	88.49

Fig 11(a): Average Retail Prices of selected Petroleum Products

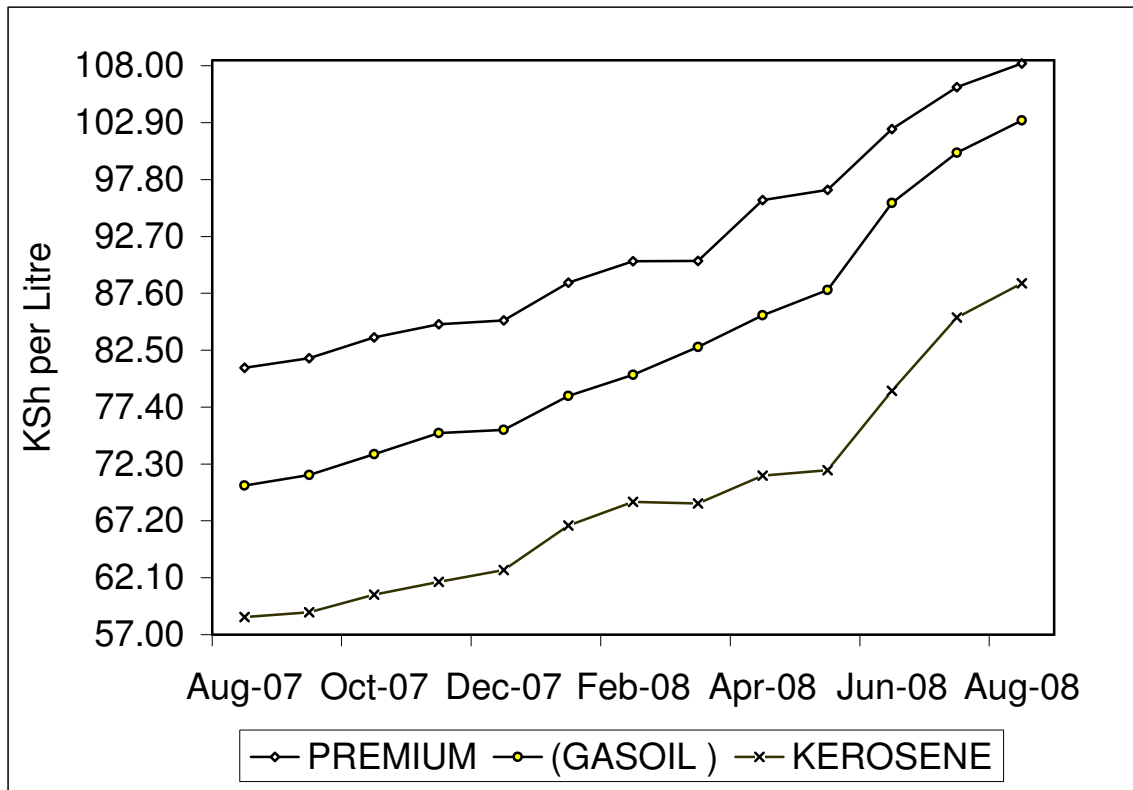


Table 14 (e): Weighted Average Retail Prices for Selected Fuels in Kenya

PERIOD	MOTOR GASOLINE PREMIUM (KSh Per Litre)	MOTOR GASOLINE REGULAR (KSh per Litre)	LIGHT DIESEL OIL, GASOIL (KSh per Litre)	ILLUMINATING KEROSENE (KSh per Litre)	L.P.G (KSh per 13Kg)	Charcoal (KSh per 4 Kg Tin)
Jul-07	79.74	79.16	68.15	57.32	1,642.20	33.02
Aug-07	80.00	79.48	68.17	57.58	1,655.85	33.21
Sep-07	80.10	79.02	68.43	57.58	1,671.63	34.08
Oct-07	82.11	80.75	71.14	58.60	1,633.21	32.85
Nov-07	83.43	82.05	72.74	59.66	1,671.54	32.72
Dec-07	84.50	82.75	73.95	60.82	1,705.76	32.61
Jan-08	88.04	86.10	77.69	64.37	1,735.70	34.79
Feb-08	89.99	88.18	80.17	66.66	1,769.35	35.08
Mar-08	91.63	89.99	81.63	66.94	1,783.63	34.99
Apr-08	94.32	92.71	84.49	68.81	1,785.46	34.91
May-08	98.60	94.96	88.51	74.30	1,797.90	35.50
Jun-08	100.43	98.73	93.18	75.45	-	-
Jul-08	103.30	102.45	97.68	80.95	-	-
Aug-08	105.90	104.18	100.90	84.95	-	-

Source : Kenya National Bureau of Statistics

- data not available

Fig 11(b): Weighted Average Prices for LPG in Kenya

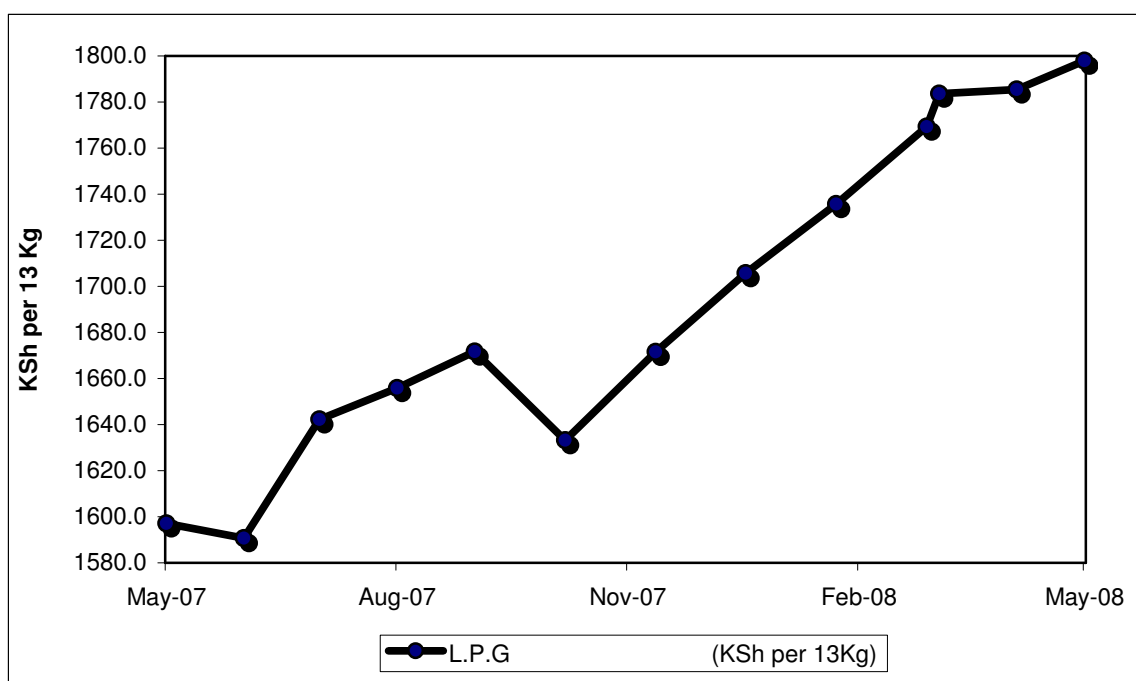


Table 14(f): Murban ADNOC Prices 2003-2008

US\$BBL						
Month/Year	2003	2004	2005	2006	2007	2008*
January	29.60	31.05	42.10	62.15	54.85	92.25
February	31.70	30.90	44.00	60.95	58.75	95.10
March	29.10	33.15	50.95	60.85	62.10	102.20
April	25.00	33.80	52.55	67.50	67.60	109.35
May	25.85	37.05	49.80	68.50	68.40	125.75
June	26.80	35.95	55.45	68.85	69.70	134.00
July	27.75	37.35	57.10	73.00	73.70	137.35
August	28.85	41.55	60.95	72.70	71.75	117.50
September	26.95	41.39	61.05	63.25	78.55	
October	29.10	42.80	58.00	59.35	81.80	
November	29.60	39.65	54.95	59.70	91.75	
December	30.05	38.50	56.90	62.05	90.60	

Source : Ministry of Energy

\* Provisional

ADNOC : Abu Dhabi National Oil Corporation

PRICE : Abu Dhabi Free On Board (FOB)

US\$/ BBL: US Dollar per Barrel

Fig 12: Trend for Murban ADNOC Crude Oil Prices

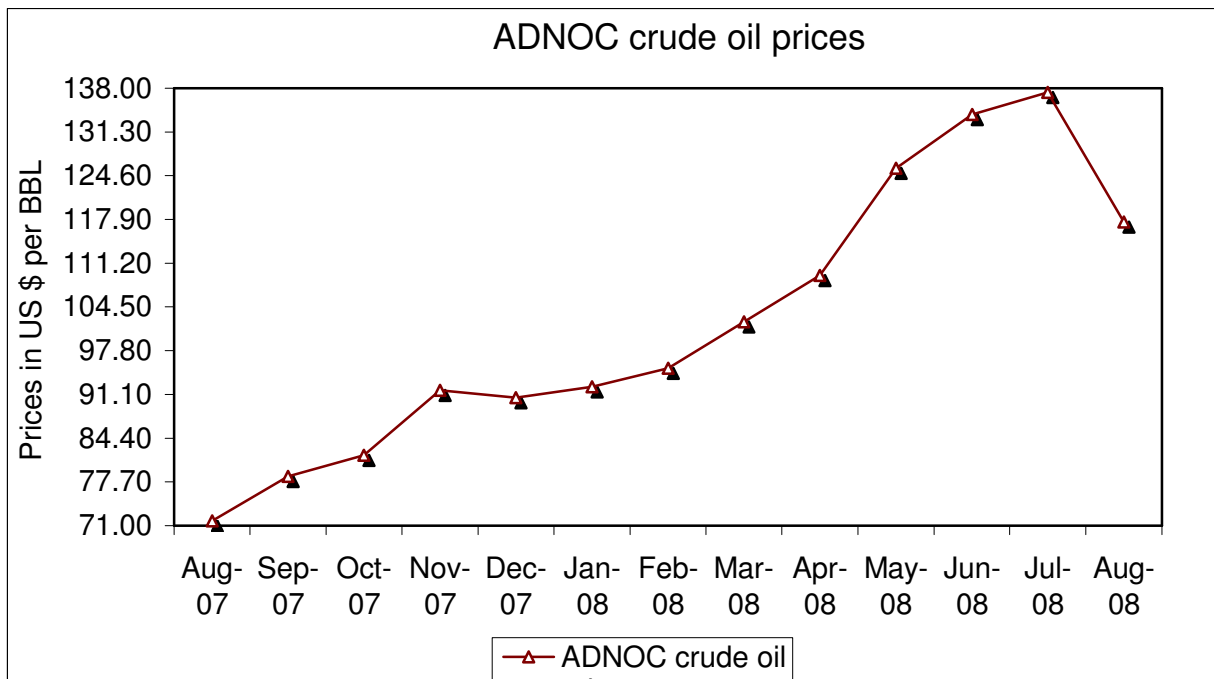


Table 15: Value of Building Plans Approved by Nairobi City Council (NCC)

KSh.'Million

MONTHS	ACTUAL			REAL**		
	RESIDENTIAL	NON RESIDENTIAL	AGGREGATE ACTUAL	RESIDENTIAL	NON RESIDENTIAL	REAL AGGREGATE
<b>2007</b>						
January	4,339.6	2,405.1	6,744.6	92.3	48.7	141.0
February	2,142.3	672.7	2,815.0	13.6	58.5	72.1
March	3,056.8	1,372.0	4,428.8	65.0	27.8	92.8
April	3,379.4	5,808.3	9,187.7	71.9	117.6	189.5
May	2,588.5	985.8	3,574.3	55.1	20.0	75.0
June	2,405.0	2,215.6	4,620.6	51.2	44.9	96.0
July	2,181.9	2,270.1	4,452.0	46.4	46.0	92.4
Aug	1,660.9	1,459.9	3,120.8	35.3	29.6	64.9
Sep	2,556.2	1,514.4	4,070.6	52.1	29.4	81.5
Oct	6,214.1	2,764.2	8,978.2	126.7	53.7	180.4
November	2,959.5	3,125.3	6,084.8	60.4	60.7	121.3
December	2,721.4	963.3	3,684.8	55.5	18.7	73.4
<b>2008</b>						
January	2,355.3	1,968.5	4,323.8	43.8	34.9	78.7
February	2,496.4	1,525.4	4,021.8	46.4	27.1	73.5
March	1,496.1	2,916.8	4,412.9	27.8	51.7	79.5
April	3,249.1	2,962.9	4,021.8	60.4	52.6	112.9
May	1,683.6	2,810.7	4,021.8	31.3	49.9	81.1

Source: Nairobi City Council

\* Provisional

+ : NCC Approval committee did not meet to approve new plans

\*\* Actual deflated by relevant construction cost indices ( Dec1972 =100)

- data not available

Table 16(a): Domestic Production of Sugar

Metric Tonnes								
Month	2001	2002	2003	2004	2005	2006	2007	2008*
January	28,291	48,300	37,923	49,186	48,993	47,596	42,188	38,986
February	30,308	39,479	39,709	48,708	41,929	44,823	41,246	49,772
March	36,110	39,479	22,881	46,827	40,192	51,327	45,933	40,753
April	33,148	41,105	17,879	43,123	42,988	41,055	47,255	38,968
May	24,731	18,744	34,954	37,583	40,869	39,849	45,427	50,865
June	35,683	44,581	39,144	28,069	29,076	34,985	36,870	49,300
July	25,695	50,184	31,878	36,824	27,995	30,985	37,496	40,805
August	19,015	45,895	40,106	41,622	41,585	47,002	44,898	
September	37,058	48,752	48,302	45,438	39,003	35,173	44,396	
October	37,355	44,573	48,939	45,530	45,810	35,102	48,849	
November	29,311	35,609	43,037	45,107	42,493	34,265	44,155	
December	40,733	37,923	43,768	48,738	48,069	33,509	41,691	
<b>Total</b>	<b>377,438</b>	<b>494,624</b>	<b>448,520</b>	<b>516,755</b>	<b>489,002</b>	<b>475,671</b>	<b>520,404</b>	

\*Provisional

\*\* Revised based on Kenya Sugar Board figures.

Source: Kenya Sugar Authority

Metric Tonnes								
Month	2001	2002	2003	2004	2005	2006*	2007*	2008*
January	28,889	38,553	51,676	17,162	22,025	32,548	28,835	24,449
February	17,270	18,547	19,540	12,692	22,895	26,470	27,484	22,435
March	17,721	17,558	17,353	17,650	27,395	27,538	31,120	29,411
April	13,798	14,096	15,970	10,596	18,196	19,542	26,411	21,622
May	11,288	11,698	13,514	12,509	17,308	20,406	26,148	23,842
June	11,840	13,917	15,109	19,776	18,513	22,682	22,852	23,952
July	7,981	6,947	6,266	13,828	19,044	17,568	20,508	
August	10,136	10,486	10,784	12,722	15,367	20,095	21,402	
September	8,180	7,842	6,709	18,768	19,950	20,127	25,899	
October	11,042	9,980	9,102	13,863	21,965	23,774	40,067	
November	12,781	12,354	11,977	11,813	26,881	20,689	27,177	
December	19,612	20,521	22,989	14,542	27,485	27,968	30,329	
<b>Total</b>	<b>170,538</b>	<b>182,499</b>	<b>200,989</b>	<b>175,921</b>	<b>257,024</b>	<b>279,407</b>	<b>328,231</b>	

Source : Kenya National Bureau of Statistics

- data not available

\*Provisional

Table 16(c) : Production of Assembled Vehicles

Month	Numbers			
	2005	2006*	2007*	2008*
January	322	360	450	468
February	641	411	516	592
March	579	461	565	388
April	553	436	532	601
May	489	486	574	584
June	448	399	481	526
July	507	439	456	
August	439	480	589	
September	423	477	566	
October	341	447	718	
November	322	592	658	
December	335	392	437	
<b>Total</b>	<b>5,399</b>	<b>5,380</b>	<b>6,542</b>	

\*Provisional

**TABLE 16(d): PRODUCTION OF GALVANISED SHEETS**

Month	Metric Tonnes			
	2005	2006	2007	2008
January	12,203	13,520	13,515	16,240
February	11,491	12,765	15,365	16,912
March	10,679	12,736	16,920	15,498
April	10,439	13,138	15,855	15,396
May	15,952	13,754	14,816	15,240
June	15,085	13,946	16,404	15,050
July	13,596	15,695	15,674	
August	14,806	15,180	15,921	
September	17,536	13,927	15,877	
October	15,837	13,619	16,611	
November	15,544	15,552	15,372	
December	15,950	14,914	15,930	
<b>Total</b>	<b>169,118</b>	<b>168,746</b>	<b>188,260</b>	

**Source : Kenya National Bureau of Statistics**

- data not available

\*Provisional

Table 16(e): Cement production and Consumption

MONTHS	Metric Tonnes					
	2006		2007*		2008*	
	PRODUCTION	CONSUMPTION	PRODUCTION	CONSUMPTION	PRODUCTION	CONSUMPTION
January	161,701	136,601	196,464	135,327	178,661	155,664
February	158,364	129,892	178,706	130,918	186,508	176,538
March	164,533	145,723	215,477	164,619	214,565	187,427
April	167,015	130,696	198,779	162,976	212,410	199,306
May	173,367	137,022	214,333	178,679	255,825	248,845
June	179,889	148,516	198,002	163,622	245,056	240,625
July	191,968	148,648	236,597	190,706	268,602	176,711
August	186,962	160,361	235,786	191,609	270,807	155,890
September	180,924	151,012	235,088	191,373		
October	212,101	172,258	206,289	191,244		
November	202,101	163,825	221,484	199,745		
December	195,165	141,260	208,656	160,582		
<b>TOTAL</b>	<b>2,174,090</b>	<b>1,765,814</b>	<b>2,545,660</b>	<b>2,061,400</b>		

- data not available

Source: Kenya National Bureau of Statistics

\*Provisional

-: data not available

Table 16F: Milk Intakes in the Formal Milk Sector.

	<b>litres</b>			
<b>Month</b>	<b>2005</b>	<b>2006</b>	<b>2007</b>	<b>2008</b>
<b>Jan</b>	25,843,184	28,993,210	35,997,997	28,596,999
<b>Feb</b>	25,233,962	25,445,275	37,508,095	26,527,462
<b>Mar</b>	24,245,260	21,142,657	34,608,329	26,885,445
<b>Apr</b>	22,271,673	23,285,252	33,286,207	28,616,588
<b>May</b>	25,260,095	29,773,451	30,038,560	33,280,195
<b>Jun</b>	27,742,995	34,032,057	33,092,547	32,000,000
<b>Jul</b>	32,972,254	33,304,057	33,147,783	
<b>Aug</b>	31,841,004	32,658,519	36,022,269	
<b>Sept</b>	30,935,673	32,159,974	35,186,438	
<b>Oct</b>	30,945,573	32,236,110	37,988,733	
<b>Nov</b>	32,229,310	33,925,921	39,840,842	
<b>Dec</b>	30,013,714	33,192,254	36,393,069	
<b>Total</b>	<b>339,534,696</b>	<b>360,148,736</b>	<b>423,110,869</b>	

Source: Kenya Dairy Board

FIG 13: Milk Intake in the Formal Sector

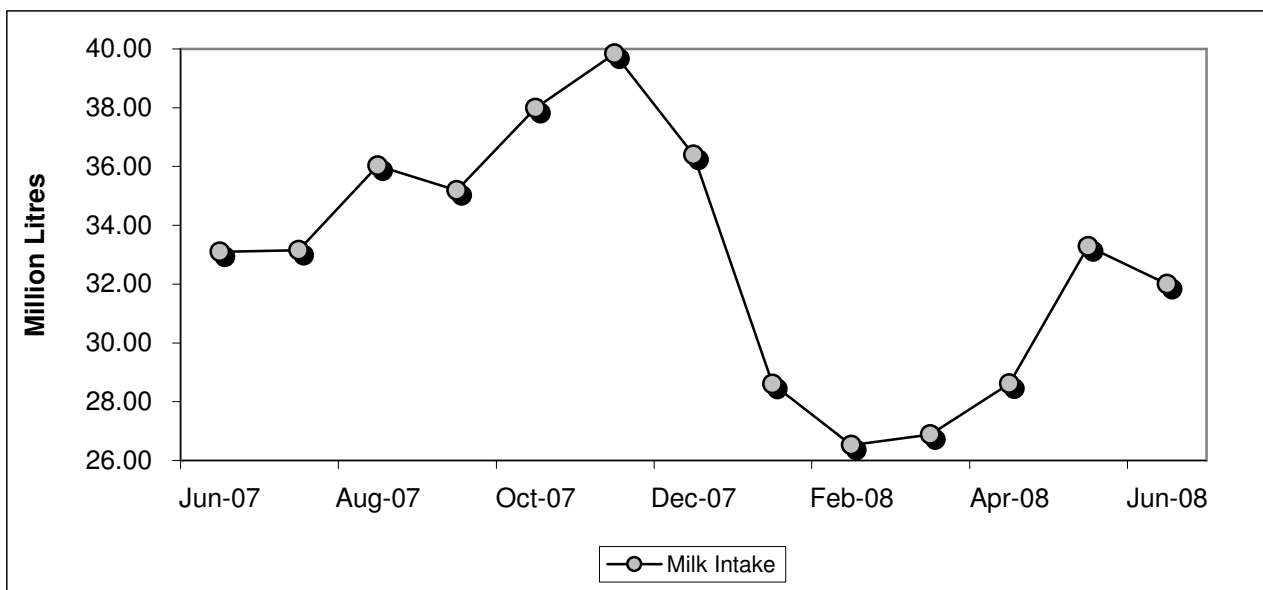


Table 17: Visitor Arrivals\* through Jomo Kenyatta International Airport (J.K.I.A) and Moi International Airport (M.I.A)

				Numbers
MONTH	AIRPORT		Visitors to Kenya	
	JKIA	MIA		
<b>Total 2006</b>	<b>684,475</b>	<b>261,773</b>	<b>946,248</b>	
<b>2007</b>				
March	58,924	26,933	85,857	
April	50,960	15,282	66,242	
May	51,647	10,287	61,934	
June	63,877	10,967	74,844	
July	80,025	21,963	101,988	
August	82,487	26,916	109,403	
September	70,160	22,810	92,970	
October	66,954	24,127	91,081	
November	55,701	23,210	78,911	
December	67,126	29,210	96,336	
<b>Total 2007</b>	<b>1,386,946</b>	<b>508,861</b>	<b>1,895,807</b>	
<b>2008</b>				
January	46,464	8,906	55,370	
February	30,231	6,739	36,970	
March	40,770	5,106	45,876	
April	40,686	2,063	42,749	
May	39,812	2,760	42,572	
June	47,224	3,059	50,283	
July	64,208	9,311	73,519	

FIG 14: VISITORS ARRIVING IN KENYA THROUGH THE MAIN AIRPORTS

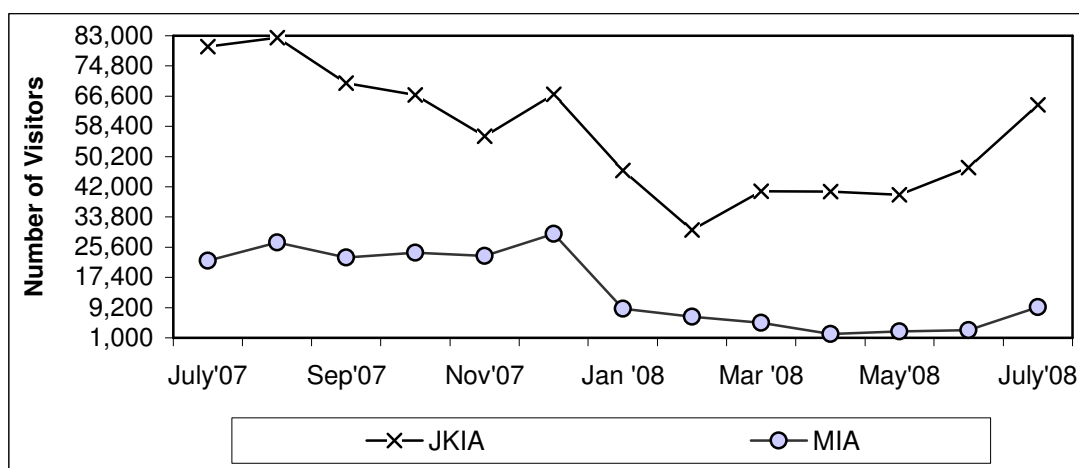


TABLE (18A): JOMO KENYATTA INT. AIRPORT INTERNATIONAL FLIGHTS ONLY- EMBARKED PASSENGERS BY PORT OF DESTINATION.

PORTS.	2007							2008						
	July	Aug	Sep	Oct	Nov	Dec	TOTAL	Jan	Feb	Mar	Apr	May	June	July
ADDIS ABABA (ADD)	4,029	3,888	782	5,354	3,959	6,190	45,260	719	3,975	635	740	620	4,320	1,081
CAIRO (CAI)	3,008	3,088	2,904	3,530	2,529	1,201	26,195	902	1,367	1,860	2045	1,903	2,505	3,719
DAR ES SALAAM (DAR)	7,333	9,868	8,294	7,347	6,378	6,373	82,939	5,278	5,667	6,300	7018	6,709	2,684	7,073
ENTEBBE (EBB)	9,369	11,824	10,989	9,816	10,297	9,375	119,541	9,143	8,767	10,505	9631	9,647	11,051	10,839
HARARE (HRE)	881	1,371	1,324	1,140	2,024	1,635	16,880	1,223	1,148	1,556	1357	1,334	1,186	918
JOHANNESBURG (JNB)	9,782	10,291	6,889	9,868	12,982	9,998	116,178	8,672	6,645	6,168	5860	8,118	8,741	6,237
<b>TOTAL AFRICA</b>	<b>34,402</b>	<b>40,330</b>	<b>31,182</b>	<b>37,055</b>	<b>38,169</b>	<b>34,772</b>	<b>406,993</b>	<b>25,937</b>	<b>27,569</b>	<b>27,024</b>	<b>26,651</b>	<b>28,331</b>	<b>30,487</b>	<b>29,867</b>
BOMBAY (BOM)	6,995	5,878	6,084	6,827	8,371	6,732	73,691	1,019	4,821	662	5271	4,282	6,253	6,442
DUBAI (DXB)	10,424	9,028	6,465	6,301	17,235	17,780	122,115	13,866	5,729	15,580	15383	15,540	14,870	21,141
JEDAH (JED)	717	2,432	1,429	0	472	0	8,130	0	256	264	492	507	463	0
KARACHI (KHI)	0	0	0	0	0	0	0	0	0	0	0	0	0	0
MUSCAT (MCT)	-	-	0	-	0	0	0	0	0	0	0	0	0	0
OTHERS														
<b>TOTAL ASIA</b>	<b>18,136</b>	<b>17,338</b>	<b>13,978</b>	<b>13,128</b>	<b>26,078</b>	<b>24,512</b>	<b>203,936</b>	<b>14,885</b>	<b>10,806</b>	<b>16,506</b>	<b>21,146</b>	<b>20,329</b>	<b>21,586</b>	<b>27,583</b>
AMSTERDAM (AMS)	17,218	22,088	18,590	16,183	15,311	2,632	176,803	3,950	2,357	2,703	3433	7,771	13,085	6,414
BRUSSELS (BRU)	2,555	3,831	2,537	1,825	2,092	2,069	29,563	1,345	1,003	0	0	3,353	3,282	2,403
LONDON (LON)	21,103	23,395	20,119	16,896	14,155	11,862	195,780	14,002	7,252	10,247	6786	11,093	17,709	12,957
PARIS-(CDG) & (PAR)	-	3,005	2,718	1,368	1,721	1,718	19,034	1,248	565	-	0	0	0	3,885
ROME (ROM) <sup>z</sup>	-	-	-	-	-	-	-	-	-	-	0	0	0	0
ZURICH (ZRH)	472	2,152	2,482	2,408	2,054	2,137	27,288	3,695	3,558	0	0	3,669	4,064	2,552
<b>TOTAL EUROPE</b>	<b>41,348</b>	<b>54,471</b>	<b>46,446</b>	<b>38,680</b>	<b>35,333</b>	<b>20,418</b>	<b>448,468</b>	<b>24,240</b>	<b>14,735</b>	<b>12,950</b>	<b>10,219</b>	<b>25,886</b>	<b>38,140</b>	<b>28,211</b>
<b>TOTAL OTHERS**</b>	<b>34,277</b>	<b>41,690</b>	<b>42,147</b>	<b>37,619</b>	<b>38,429</b>	<b>34,060</b>	<b>428,639</b>	<b>28,017</b>	<b>35,556</b>	<b>69,894</b>	<b>33061</b>	<b>37,644</b>	<b>37,102</b>	<b>45,355</b>
<b>GRAND TOTAL</b>	<b>128,163</b>	<b>153,829</b>	<b>133,753</b>	<b>126,482</b>	<b>138,009</b>	<b>113,762</b>	<b>1,488,177</b>	<b>93,079</b>	<b>88,666</b>	<b>126,374</b>	<b>91,077</b>	<b>112,190</b>	<b>127,315</b>	<b>131,016</b>

Source : Kenya National Bureau of Statistics

- no passengers embarked

\* Provisional

\*\* Ports not listed

z All planes flying to Italy

FIG 15: J.K.I.A. PASSENGERS BY REGION OF DESTINATION

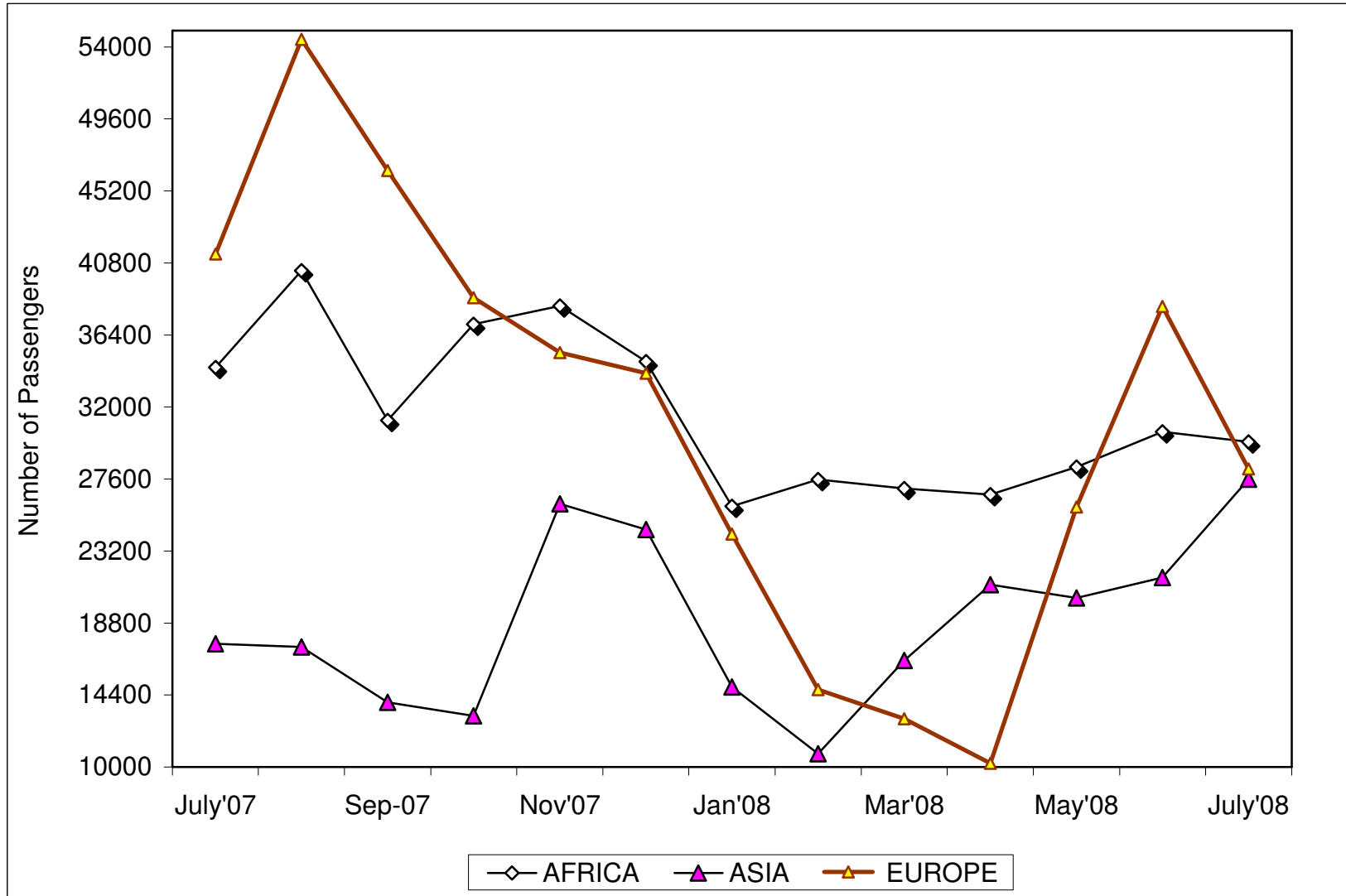


TABLE (18B): JOMO KENYATTA INT. AIRPORT INTERNATIONAL FLIGHTS ONLY- LANDED PASSENGERS BY PORT OF DESTINATION.

PORTS	2007							2008						
	July	Aug	Sep	Oct	Nov	Dec	TOTAL	Jan	Feb	Mar	Apr	May	June	July
<b>ADDIS ABABA (ADD)</b>	4,154	3,912	796	4,493	4,428	2,812	<b>42,261</b>	858	3,232	891	950	1,114	3,041	649
<b>CAIRO (CAI)</b>	2,031	2,884	1,122	2,360	2,190	1,451	<b>23,824</b>	1,184	1,202	1,592	1,874	1,840	2,369	3,888
<b>DAR ES SALAAM (DAR)</b>	5,418	10,859	8,328	9,242	6,664	5,816	<b>85,689</b>	5,553	6,770	6,334	6,547	6,277	4,881	7,963
<b>ENTEBBE (EBB)</b>	9,484	12,104	10,285	9,677	10,288	9,177	<b>118,612</b>	8,756	8,591	10,461	9,304	9,430	10,774	11,035
<b>HARARE (HRE)</b>	1,029	1,242	1,520	1,043	1,308	1,303	<b>15,555</b>	1,155	1,016	1,052	1,043	893	1,060	1,172
<b>JOHANNESBURG (JNB)</b>	8,925	10,088	6,740	8,973	10,120	10,733	<b>107,676</b>	7,148	5,527	5,729	6,306	8,002	9,171	7,154
<b>TOTAL AFRICA</b>	<b>31,041</b>	<b>41,089</b>	<b>28,791</b>	<b>35,788</b>	<b>34,998</b>	<b>31,292</b>	<b>393,617</b>	<b>24,654</b>	<b>26,338</b>	<b>26,059</b>	<b>26,024</b>	<b>27,556</b>	<b>31,296</b>	<b>31,861</b>
<b>BOMBAY (BOM)</b>	5,496	7,098	6,391	3,983	5,964	0	<b>70,627</b>	1,616	1,121	1,097	6,113	7,162	6,700	6,453
<b>DUBAI (DXB)</b>	11,256	8,026	5,845	6,199	15,600	17,210	<b>118,377</b>	14,215	5,395	14,699	14,226	15,024	15,587	19,616
<b>JEDAH (JED)</b>	307	1,546	250	0	195	0	<b>6,906</b>	0	165	262	323	452	706	0
<b>KARACHI (KHI)</b>	0	0	0	0	0	0	<b>0</b>	0	0	0	0	0	0	0
<b>MUSCAT (MCT)</b>	0	0	0	0	0	0	<b>-</b>	0	0	0	0	0	0	0
<b>TOTAL ASIA</b>	<b>17,059</b>	<b>16,670</b>	<b>12,486</b>	<b>10,182</b>	<b>21,759</b>	<b>17,210</b>	<b>195,910</b>	<b>15,831</b>	<b>6,681</b>	<b>16,058</b>	<b>20,662</b>	<b>22,638</b>	<b>22,993</b>	<b>26,069</b>
<b>AMSTERDAM (AMS)</b>	16,675	19,663	19,273	18,230	14,537	7,605	<b>183,515</b>	5,355	5,294	5,994	4,337	7,929	7,297	5,595
<b>BRUSSELS (BRU)</b>	1,779	1,412	1,674	1,985	1,158	1,926	<b>19,720</b>	767	600	0	0	2,350	5,751	1,828
<b>LONDON (LON)</b>	18,688	20,698	18,885	20,208	12,384	15,233	<b>189,493</b>	8,948	6,201	9,284	5,787	11,985	20,902	10,953
<b>PARIS-(CDG)&amp;( PAR)</b>	-	2,430	1,511	2,003	1,544	2,096	<b>17,293</b>	639	584	0	0	0	0	2,892
<b>ROME (ROM) Z</b>	0	0	0	0	0	0	<b>-</b>	0	0	0	0	0	0	0
<b>ZURICH (ZRH)</b>	524	2,246	2,528	0	1,996	2,307	<b>25,579</b>	1,521	1,099	0	0	1,679	2,097	5,104
<b>TOTAL(EUROPE)</b>	<b>37,666</b>	<b>46,449</b>	<b>43,871</b>	<b>42,426</b>	<b>31,619</b>	<b>29,167</b>	<b>435,600</b>	<b>17,230</b>	<b>13,778</b>	<b>15,278</b>	<b>10,124</b>	<b>23,943</b>	<b>36,047</b>	<b>26,372</b>
<b>OTHERS(TOTAL) **</b>	31,075	44,688	44,322	41,291	40,036	38,133	<b>445,935</b>	25,996	30,007	72,017	54,919	56,779	42,088	48,881
<b>GRAND TOTAL</b>	<b>116,841</b>	<b>148,896</b>	<b>129,470</b>	<b>129,687</b>	<b>128,412</b>	<b>115,802</b>	<b>1,471,062</b>	<b>83,711</b>	<b>76,804</b>	<b>129,412</b>	<b>111,729</b>	<b>130,916</b>	<b>132,424</b>	<b>133,183</b>

Source : Kenya National Bureau of Statistics

- no passengers landed

\* Provisional

\*\* Ports not listed

z Includes all planes from Italy

FIG 16: J.K.I.A. PASSENGERS BY REGION OF ORIGIN

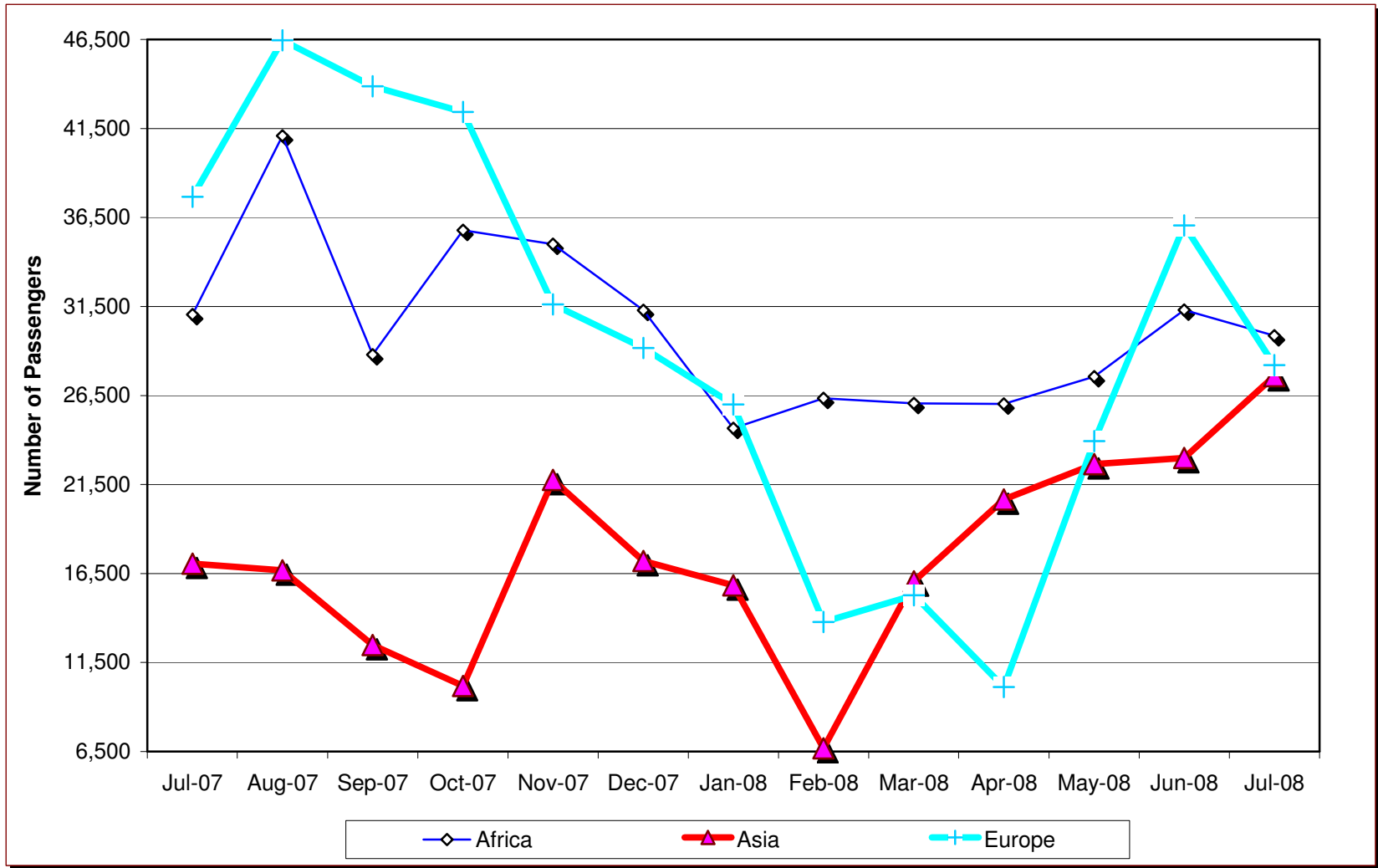


Table 18 C: New Vehicle Registration

<i>Body Type/Month</i>	2007								2008					
	<i>June</i>	<i>July</i>	<i>Aug</i>	<i>Sep</i>	<i>Oct</i>	<i>Nov</i>	<i>Dec</i>	<i>Cumulative 2007</i>	<i>Jan</i>	<i>Feb</i>	<i>Mar</i>	<i>Apr</i>	<i>May</i>	<i>June</i>
Saloons	1,094	1,627	1,710	1,824	2,057	1,721	1,096	<b>17,893</b>	1,876	1,065	830	1,272	1,311	1,272
St,Wagon	1,900	2,191	2,560	2,476	2,905	2,649	1,406	<b>24,115</b>	2,702	1,553	1,299	1,839	2,148	1,890
Vans,P/Ups,etc	660	874	795	778	883	877	696	<b>9,470</b>	601	706	566	877	413	405
M/Buses	406	377	464	430	598	84	503	<b>4,252</b>	427	452	435	559	390	314
Buses	103	140	110	120	132	714	170	<b>2,006</b>	83	61	82	97	128	73
Lorries	513	558	629	492	625	633	471	<b>6,329</b>	409	462	541	658	547	593
Trailers	197	216	210	197	236	178	144	<b>2,193</b>	177	134	184	182	168	170
Motors Cycles	1,321	1,114	1,366	1,497	1,353	2,165	826	<b>16,293</b>	1,740	1,982	1,904	3,840	4,390	3,859
3 Whellers	100	77	90	63	112	112	15	<b>1,072</b>	63	48	75	30	56	57
Wheeled tractors	113	125	83	91	102	154	55	<b>1,213</b>	87	121	85	133	101	88
Others	44	70	89	41	43	32	13	<b>488</b>	27	45	43	52	47	59
<b>TOTAL</b>	<b>6,451</b>	<b>7,369</b>	<b>8,106</b>	<b>8,009</b>	<b>9,046</b>	<b>9,319</b>	<b>5,395</b>	<b>85,324</b>	<b>8,192</b>	<b>6,629</b>	<b>6,044</b>	<b>9,539</b>	<b>9,699</b>	<b>8,780</b>

Source : Kenya National Bureau of Statistics

\* Provisional

- Not specified