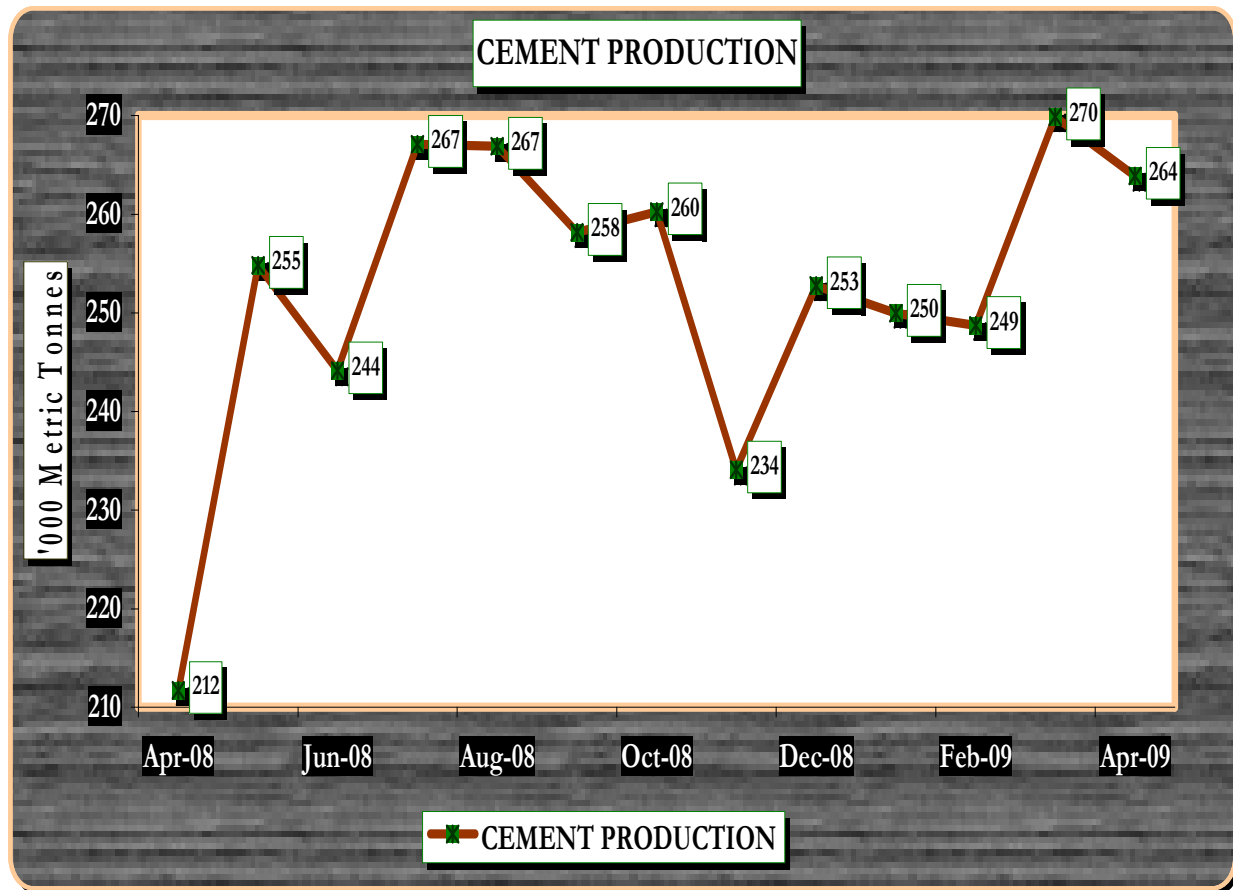


LEADING ECONOMIC INDICATORS



KENYA NATIONAL BUREAU OF STATISTICS

P.O. Box 30266- 00100 Nairobi
Website: www.knbs.go.ke

Tel: 317586/88, 317612/22 Fax: 315977
email: director@knbs.go.ke

MAY 2009

TABLE OF CONTENTS

KEY HIGHLIGHTS ON LEADING ECONOMIC INDICATORS	4
TABLE 1: KENYA CONSUMER PRICE INDICES AND INFLATION RATE	9
TABLE 2: MEAN FOREIGN EXCHANGE RATES OF KENYA SHILLINGS AGAINST SELECTED MAJOR CURRENCIES AT THE END OF THE MONTH.....	11
Table 3: Interest Rates (%)	13
TABLE 4: CAPITAL MARKETS – NAIROBI STOCK EXCHANGE	14
TABLE 5 (a): MONEY SUPPLY.....	15
TABLE 5b: FOREIGN EXCHANGE RESERVES.....	17
TABLE 6: COFFEE SALES AND PRICES	18
TABLE 7: TEA PRODUCTION AND PRICES*	19
Table 8(a): Average Monthly Retail Prices for Dry Maize in the Year 2008.....	20
Table 8(b): Average Monthly Retail Prices for Dry Maize in the Year 2009.....	21
Table 8(c): Average Monthly Retail Prices for Dry Beans Prices (2008).....	22
Table 8(c): Average Monthly Retail Prices for Dry Beans Prices (2009).....	23
Table 9: Export of Coffee, Tea and Horticultural Produce.....	24
Table 10: Monthly Exports of Horticultural Products	25
Table 11: Kenya’s External Trade, March 2008 – March 2009	26
Table 12: Major Destinations of Domestic Exports, March 2008 – March 2009.....	27
Table 13: Major Origins of Imports, March 2008 – March 2009	28
Table 12 (a): Domestic Exports by Broad Economic Category.....	29
Table 13 (a): Imports by Broad Economic Category.....	30
Table 14(a): Local Electricity Generation by Source	31
Table 14(b): Generation and Consumption of Electricity	32
Table 14 (c): Consumption of Petroleum Fuels	33
Table 14 (d): Weighted Average Retail Prices for Selected Fuel Products within Nairobi .	34
Table 14 (e): Weighted Average Retail Prices for Selected Fuels in Kenya.....	35
Table 14(f): Murban ADNOC Prices 2003-2008	36
Table 15: Value of Building Plans Approved by Nairobi City Council (NCC)	37
Table 16(a): Domestic Production of Sugar.....	38
Table 16(c): Production of Assembled Vehicles	39
Table 16(e): Cement production and Consumption	40
Table 16(f): Milk Intakes in the Formal Milk Sector	41
Table 17: Visitor Arrivals* through Jomo Kenyatta International Airport (J.K.I.A) and Moi International Airport (M.I.A).....	42

TABLE (18A):	JOMO KENYATTA INT. AIRPORT INTERNATIONAL FLIGHTS ONLY- EMBARKED PASSENGERS BY PORT OF DESTINATION.....	43
TABLE (18B):	JOMO KENYATTA INT. AIRPORT INTERNATIONAL FLIGHTS ONLY- LANDED PASSENGERS BY PORT OF DESTINATION.....	45
Table 18 C:	New Vehicle Registration.....	47

CHARTS

FIG. 1:	OVERALL MONTH ON MONTH AND UNDERLYING INFLATION RATES -----	10
FIG 2:	END OF MONTH MEAN EXCHANGE RATE OF KENYA SHILLINGS AGAINST MAJOR SELECTED CURRENCIES -----	12
FIG 3:	INTEREST RATES -----	13
FIG 4:	NAIROBI STOCK EXCHANGE SHARES INDEX -----	14
FIG 5:	MONEY SUPPLY (M3) -----	16
FIG 6:	FOREIGN EXCHANGE RESERVES -----	17
FIG.7:	COFFEE SALES AT THE NAIROBI COFFEE EXCHANGE -----	18
FIG.8:	TEA PRODUCTION -----	19
Fig 9:	Electricity Generation by Source -----	31
Fig 10:	Electricity Generation Consumption and Power Losses -----	32
Fig 11(a):	Average Retail Prices of selected Petroleum Products -----	34
Fig 11(b):	Weighted Average Prices for LPG in Kenya -----	35
Fig 12:	Trend for Murban ADNOC Crude Oil Prices -----	36
FIG 13:	Milk Intake in the Formal Sector -----	41
FIG 14:	VISITORS ARRIVING IN KENYA THROUGH THE MAIN AIRPORTS -----	42
FIG 15:	J.K.I.A. PASSENGERS BY REGION OF DESTINATION -----	44
FIG 16:	J.K.I.A. PASSENGERS BY REGION OF ORIGIN -----	46

Key highlights on Leading Economic Indicators

Overview

The monthly Leading Economic Indicators Publication for May 2009 highlight trends in Consumer Price Indices (CPI) and inflation, interest rates, exchange rates, international trade, agriculture, energy, manufacturing, building and construction, tourism and transport.

Macroeconomic Indicators and Financial Intermediation

In May 2009, the Consumer Price Index (CPI) declined by 1.9 per cent from 355.36 points in April 2009 to 348.76 points while month-on-month overall inflation rate decreased from 26.1 per cent to 19.5 per cent over the same period. Month on month underlying inflation rate which excludes food items from the CPI basket also decreased from 8.2 per cent in April 2009 to 7.0 per cent in May 2009. The decline in the CPI was supported by food and non alcoholic drinks' index which went down by 2.6 per cent from 508.34 points in April 2009 to 495.20 points in May 2009 and the fuel and power index which also declined by 1.0 per cent from 345.24 points in April to 341.85 points in May 2009

The Kenya Shilling recorded mixed performance against major international currencies in May 2009. The Shilling strengthened marginally against the US Dollar, South African Rand and the Ugandan Shilling while depreciating against the Sterling pound, the Euro, the Japanese Yen and the Tanzanian Shilling during the same period. The shilling appreciated against the US Dollar and South African Rand in May 2009 to trade at KSh 78.348 and KSh 20.892, respectively. The shilling weakened against the Sterling pound, the Euro and Japanese Yen to trade at KSh 125.530, KSh 109.697 and KSh 81.040 in February 2009 down from KSh 79.544, KSh 113.126 and KSh 7.896, respectively in May 2009. The Shilling appreciated against the Ugandan but weakened against the Tanzanian Shilling over the same period.

The benchmark 91-day Treasury bill showed an increasing trend in the three months to May 2009 which is also the trend observed over the same period of 2008. The 91-day Treasury bill rose marginally from 7.34 per cent in April 2009 to 7.45 per cent in May 2009. The weighted average lending rate offered by Commercial banks for loans and advances declined from 14.87 per cent in March 2009 to 14.71 per cent in April 2009. The savings

rate offered by the same banks rose marginally from 1.90 per cent to 1.91 per cent over the same period.

The trading at the Nairobi Stock Exchange (NSE) continued with its downward trend that started in mid 2008. The 20-share index (NSE 20) declined further from 2,805.0 points in March 2009 to 2800.1 points in April 2009. Total value of shares traded increased by 5.81 per cent from KSh 2.41 billion in March 2009 to KSh 2.55 billion in April 2009. Total number of shares rose by 3.9 per cent from 207.4 million shares to 215.6 million shares over the same period.

Broad money supply (M3) expanded by 2.6 per cent from KSh 905.4 billion in March 2009 to KSh 928.7 billion in April 2009 while money and quasi-money (M2) expanded by 1.6 per cent from KSh 780.7 billion to KSh 793.5 billion over the same period.

Gross Total Foreign Exchange Reserves expanded marginally by 1.3 per cent from KSh 348.2 billion in March 2009 to KSh 352.6 billion in April 2009 while Net Foreign Exchange Reserves expanded by 4.3 per cent from KSh 267.8 billion to KSh 279.2 billion over the same period.

SECTORAL PERFORMANCES

a). Agriculture

Total quantity of coffee auctioned at the Nairobi Coffee Exchange declined by 18.3 per cent from 8,721 MT in March 2009 to 7,129 MT in April 2009 while its average auction price declined from KSh 156.29 per kilogram to KSh 144.22 per kilogram over the same period.

Quantity of processed tea declined by 12.8 per cent from 21,537 MT in February 2009 to 18,779 MT in 2009 while average auction price for tea increased from KSh 180.89 per kilogram to KSh 184.04 per kilogram over the same period.

Average price for dry maize increased from KSh 35.12 per kilogram in February 2009 to KSh 36.04 per kilogram in March 2009 while average price for dry beans decreased from KSh 74.25 per Kilogram to KSh 73.71 per kilogram over the same period.

b). International Trade

Total quantity of coffee exported rose by 13.3 per cent from 5,265.0 MT in March 2009 to 5,964.4 MT in April 2009 while its value also increased by 4.9 per cent from KSh 1,458.3 million to KSh 1,529.9 million over the same period.

Quantity of tea exported declined by 24.9 per cent from 28,461.7 MT in March 2009 to 21,372.2 MT in April 2009 while its value declined by 22.6 per cent from KSh 5,473.3 million to KSh 4,238.0 million over the same period.

Quantity of horticultural produce exported declined by 15.3 per cent from 17,525 MT in March 2009 to 14,844 MT in April 2009 while export value of horticultural produce declined by 14.9 per cent from KSh 4,339 million to KSh 3,692 million over the same period. The decline in both quantity and value of horticultural produce exported was due to the decline in the export of cut flowers and vegetables.

Volume of trade declined marginally from KSh 92,766.51 million in March 2009 to KSh 92,147.47 million in April 2009. The decline in volume of trade was due to a decline in total exports by 16.3 per cent from KSh 31,469.71 million to KSh 26,348.27 over the same period. Total imports increased by 7.3 per cent to stand at 66,799.21 million in April 2009.

In April 2008, all major domestic exports by Broad Economic Category (BEC) contributed to the decline in total export. Food and beverages continued to be the main export category for the country with a share of 41.79 per cent of the total exports. BEC further indicate that exports of non food industrial supplies and, fuel and lubricants also declined in April 2009. Only exports of machinery and other capital equipment and, transport equipment recorded marginal increases.

Imports by Broad Economic Category (BEC) indicate that imports of non-food industrial supplies declined in April 2009 while imports of transport equipment, machinery and other capital equipment and, fuel and lubricants increased in April 2009.

c). Energy

Total electricity generation rose marginally in April 2009 to stand at 553.6 million KWh from 551.0 million KWh in March 2009. The marginal increase was due to an increase in generation by hydro plants. Share of hydro generation in total generation stood at 56.4 per cent while that of thermal and geo-thermal generation stood at 17.9 per cent and 25.7 per cent, respectively in April 2009. In the same period, total domestic consumption of electricity increased by 5.7 per cent from 414.6 million KWh to 438.3 million KWh. Power losses improved by 16.3 per cent from 134.0 million KWh to 112.2 million KWh over the same period.

Exports of electricity to Uganda increased from 2.41 million KWh in March 2009 to 3.07 million KWh in April 2009 while total imports of electricity from Uganda and Tanzania declined from 2.9 million KWh to 2.4 million KWh over the same period.

Total consumption of petroleum products declined by 8.6 per cent from 3,121.8 thousand MT in 2007 compared to 2,854.1 thousand MT in 2008. The decline in consumption of petroleum products may be attributed to the high cost of fuel prevailing during that period.

In the domestic market, average retail prices for motor gasoline, light diesel oil and illuminating kerosene declined further in April 2009 compared to the previous three months. Average retail prices for motor gasoline, light diesel oil and illuminating kerosene declined further to retail at KSh 79.79, KSh 70.11 and KSh 60.25 per litre in April 2009, respectively.

In the international market, the price of Murban crude oil declined by 3.6 per cent from US Dollars 47.55 per barrel in March 2009 to US Dollars 45.85 per barrel in April 2009.

d). Manufacturing and, building and construction

Domestic production of sugar increased by 16.4 per cent from 46,115 MT in February 2009 to 53,687 MT in 2009 while production of soft drinks also declined by 28.5 per cent from 38,763 MT in January 2009 to 27,718 MT in February 2009.

Production of new assembled vehicles declined by 12.2 per cent from 6,542 assembled vehicles in 2007 to 5,747 assembled vehicles in 2008 while production of galvanized sheets increased by 5.3 per cent from 188,260 MT to 189,260 MT over the same period.

Quantity of cement produced increased by 8.5 per cent 248.7 thousand MT in February 2009 to 269.9 thousand MT in March 2009. Consumption of cement increased by 4.4 per cent from 192.0 thousand MT in March 2009 to 200.5 thousand MT in April 2009.

Milk deliveries in the formal milk sector declined further by 10.9 per cent from 29.5 million litres in February 2009 to 26.2 million litres in March 2009.

e). Tourism and Transport

The number of visitors who arrived through Jomo Kenyatta International Airport (JKIA) and Moi International Airport increased significantly by 65.5 per cent from 136,216 visitors in the first quarter of 2008 to 228,713 visitors in the same quarter of 2009.

The number of passengers who embarked at Jomo Kenyatta International Airport (JKIA) increased by 19.7 per cent from 85,760 persons in February 2009 to 102,671 persons in March 2009 while number of passengers who landed increased by 24.7 per cent from 77,047 persons to 96,078 persons over the same period.

Total number of vehicles registered declined by 5.5 per cent from 13,102 vehicles registered in January 2009 to 12,381 vehicles registered in February 2009.

TABLE 1: KENYA CONSUMER PRICE INDICES AND INFLATION RATE

Base Oct 1997=100.

PERIOD	NAIROBI INDEX	REST* OF URBAN TOWNS INDEX	OVERALL KENYA INDEX	OVERALL MONTH ON MONTH INFLATION	UNDERLYING INFLATION RATE****
2008					
April	282.38	281.55	281.88	26.6	6.7
May	293.43	290.69	291.79	31.5	7.1
June	287.09	293.17	290.75	29.3	7.6
July	285.15	287.60	286.62	26.5	8.1
August	286.94	288.80	288.06	27.6	8.8
September	293.65	291.86	292.57	28.2	9.5
October	297.15	294.20	295.38	28.4	10.2
November	302.93	301.04	301.79	29.4	10.7
December	308.18	305.01	306.28	27.7	11.1
2009					
January	328.18	283.44	318.02	21.9	11.1
February	345.09	325.31	333.21	25.1	11.0
March	362.65	334.06	345.33	25.8	7.7
April	365.39	348.70	355.36	26.1	8.1

Source: Kenya National Bureau of Statistics

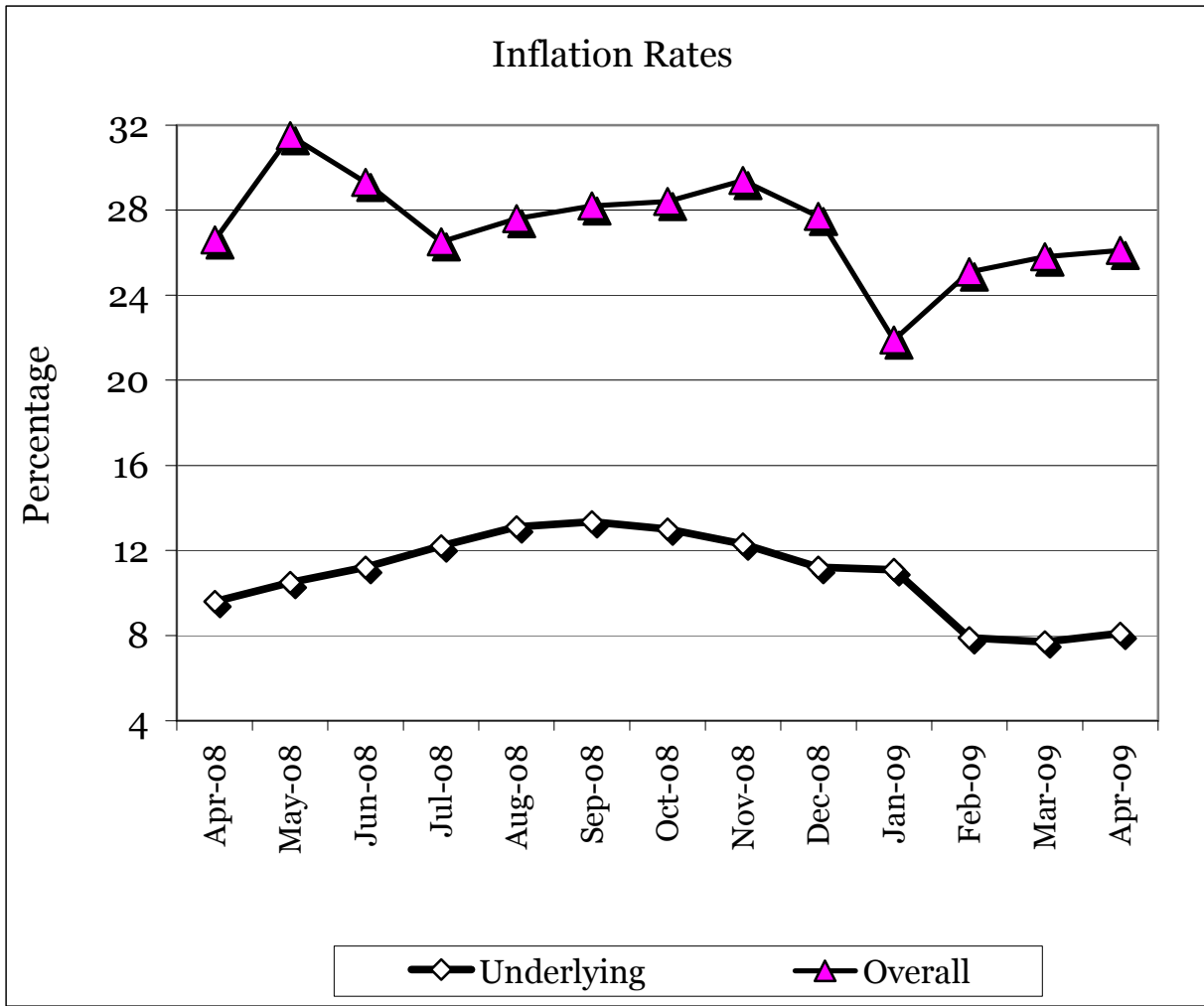
* Rest of Urban include: Nyeri, Mombasa, Malindi, Kilifi, Meru, Garissa, Kisii, Kisumu, Nakuru, Kitale, Kabarnet, and Kakamega.

** Provisional

*** The 'Month on Month' inflation rate is calculated as a percentage change of the CPI between the current month and the same month a year ago.

**** Underlying inflation rate measures inflation on non-food items in the CPI basket

FIG. 1: OVERALL MONTH ON MONTH AND UNDERLYING INFLATION RATES



**TABLE 2: MEAN FOREIGN EXCHANGE RATES OF KENYA SHILLINGS AGAINST SELECTED MAJOR CURRENCIES
AT THE END OF THE MONTH**

TABLE 2

CURRENCY	2008									2009				
	Apr	May	June	July	Aug	Sep	Oct	Nov	DEC	Jan	Feb	Mar	April	May
1 US Dollar	62.136	62.029	64.694	67.318	68.733	73.219	79.653	77.861	77.711	79.544	79.687	80.431	78.662	78.348
1 Sterling Pound	122.281	122.574	128.960	133.254	125.944	132.104	130.221	119.757	112.347	113.126	113.849	114.845	116.701	125.530
1 EURO	97.007	96.160	102.157	104.980	101.394	105.277	101.994	100.408	109.482	102.546	101.463	106.424	104.802	109.697
100 Japanese Yen	60.010	58.855	61.082	62.248	63.064	70.030	81.201	81.810	86.065	88.974	81.592	82.134	80.838	81.040
1 SA Rand	8.135	8.226	8.210	9.117	8.937	8.792	7.920	7.465	8.268	7.896	8.033	8.338	20.976	20.892
USHS/KES	27.054	26.278	25.059	24.213	23.933	22.815	23.603	25.392	25.125	25.005	24.879	26.514	28.349	28.463
TSHS/KES	19.458	19.322	18.263	17.388	16.928	15.932	16.352	16.371	16.793	16.280	16.477	16.350	17.035	16.880

* Mean of commercial banks buying and selling exchange rates prevailing at the end of the month

'Source: Kenya National Bureau of Statistics

FIG 2: END OF MONTH MEAN EXCHANGE RATE OF KENYA SHILLINGS AGAINST MAJOR SELECTED CURRENCIES

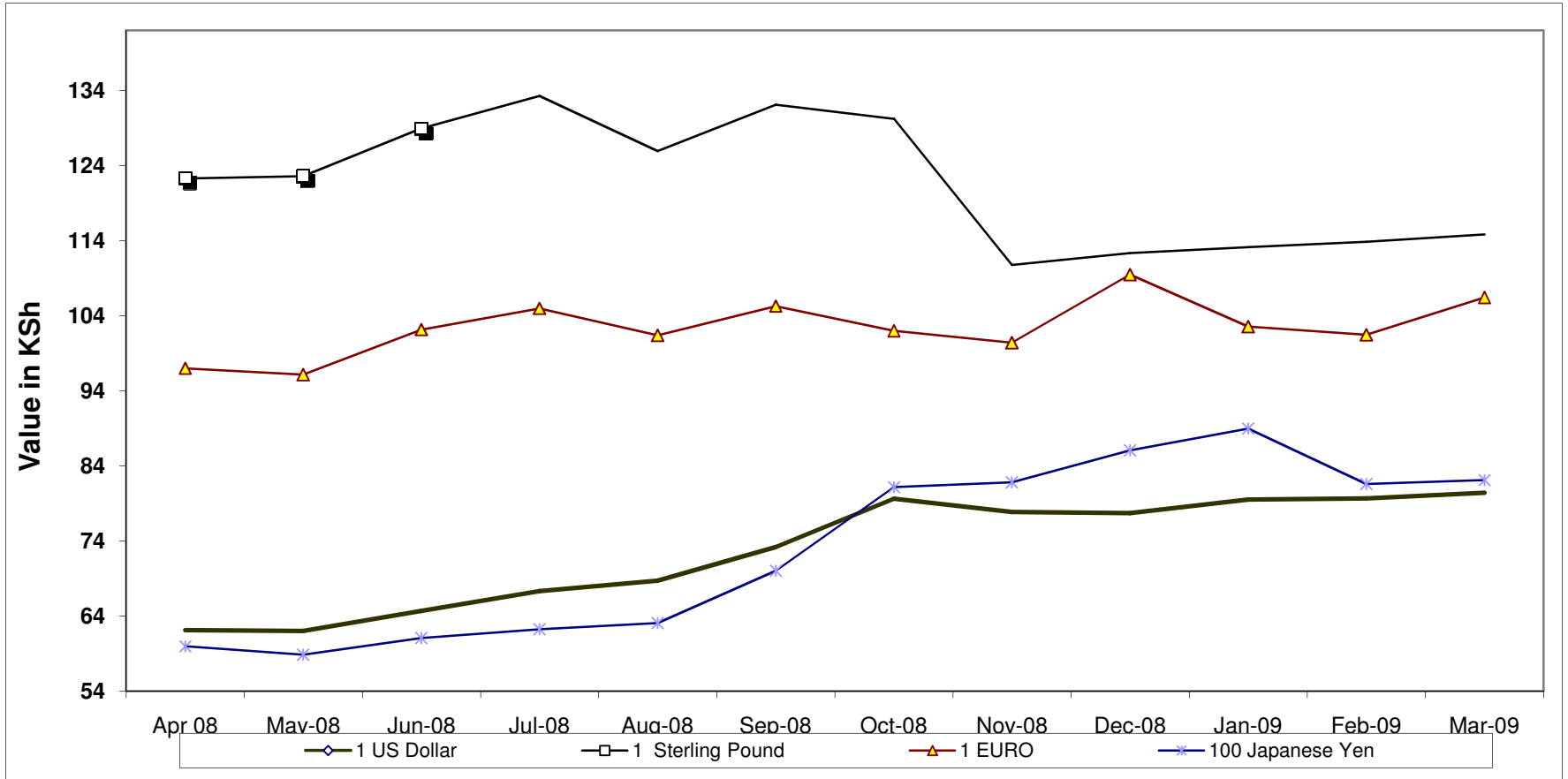


Table 3: Interest Rates (%)
TABLE 3: INTEREST RATES (%)

MONTHS	Average Yield Rates 91 - Days Treasury Bills	Rates for Commercial Banks Loans and Advances (Weighted Average)	Overdraft Rates	Inter - Bank Rates	Savings (Commercial Banks Rates)
2008					
March	6.89	14.06	13.48	6.35	1.72
April	7.35	13.91	13.46	6.70	1.71
May	7.76	14.01	13.53	7.72	1.71
June	7.73	14.06	13.30	7.77	1.70
July	8.03	13.90	13.46	8.06	1.67
August	8.02	13.66	13.11	6.93	1.68
September	7.70	13.66	13.43	6.70	1.73
October	7.75	14.12	13.91	6.81	1.74
November	8.39	14.32	13.85	6.84	1.61
December	8.59	14.87	14.40	6.68	1.62
2009					
January	8.47	14.78	14.55	5.92	2.10
February	7.55	14.67	13.46	5.49	2.13
March	7.31	14.87	13.78	5.57	1.90
April	7.34	14.71	13.66	5.73	1.91
May	7.45			6.55	

Source : Central Bank of Kenya

- data not available

* Provisional

FIG 3: INTEREST RATES

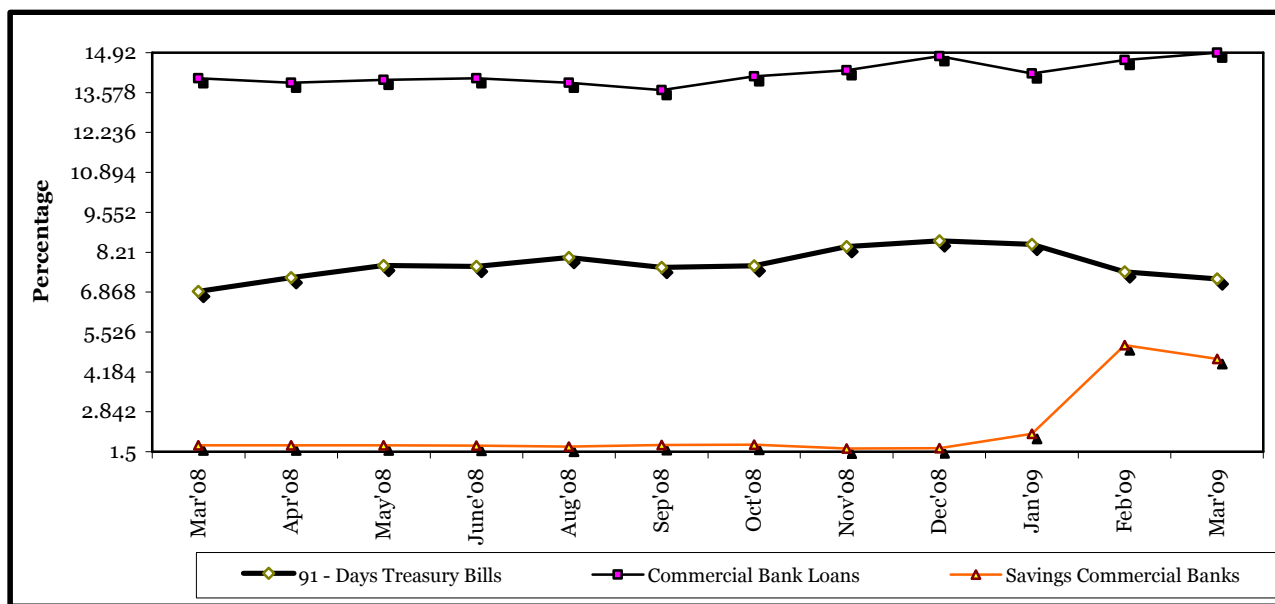


TABLE 4: CAPITAL MARKETS – NAIROBI STOCK EXCHANGE

MONTH	NUMBER OF TRANSACTIONS	NUMBER OF SHARES ('000)	VALUE OF SHARES ('000 KShs)	SHARES INDEX Base Jan 1966=100
Apr-08	57,526	141,766	5,635,570	5,336.0
May-08	71,959	168,034	6,836,652	5,175.8
Jun-08	143,942	2,154,897	22,130,018	5,185.6
Jul-08	132,507	983,747	14,282,189	4,868.3
Aug-08	83,372	490,810	7,490,223	4,648.8
Sep-08	66,060	485,283	6,787,824	4,180.4
Oct-08	44,190	393,530	3,642,410	3,386.7
Nov-08	48,277	290,953	3,723,721	3,341.5
Dec-08	29,302	170,900	4,620,000	3,521.2
Jan-09	37,310	177,553	2,624,391	3,198.9
Feb-09	30,977	159,640	1,645,278	2,474.8
Mar-09	35,328	207,390	2,414,121	2,805.0
Apr-09	37,732	215,560	2,554,381	2,800.1

Source : Nairobi Stock Exchange

** Provisional

* End month

FIG 4: NAIROBI STOCK EXCHANGE SHARES INDEX

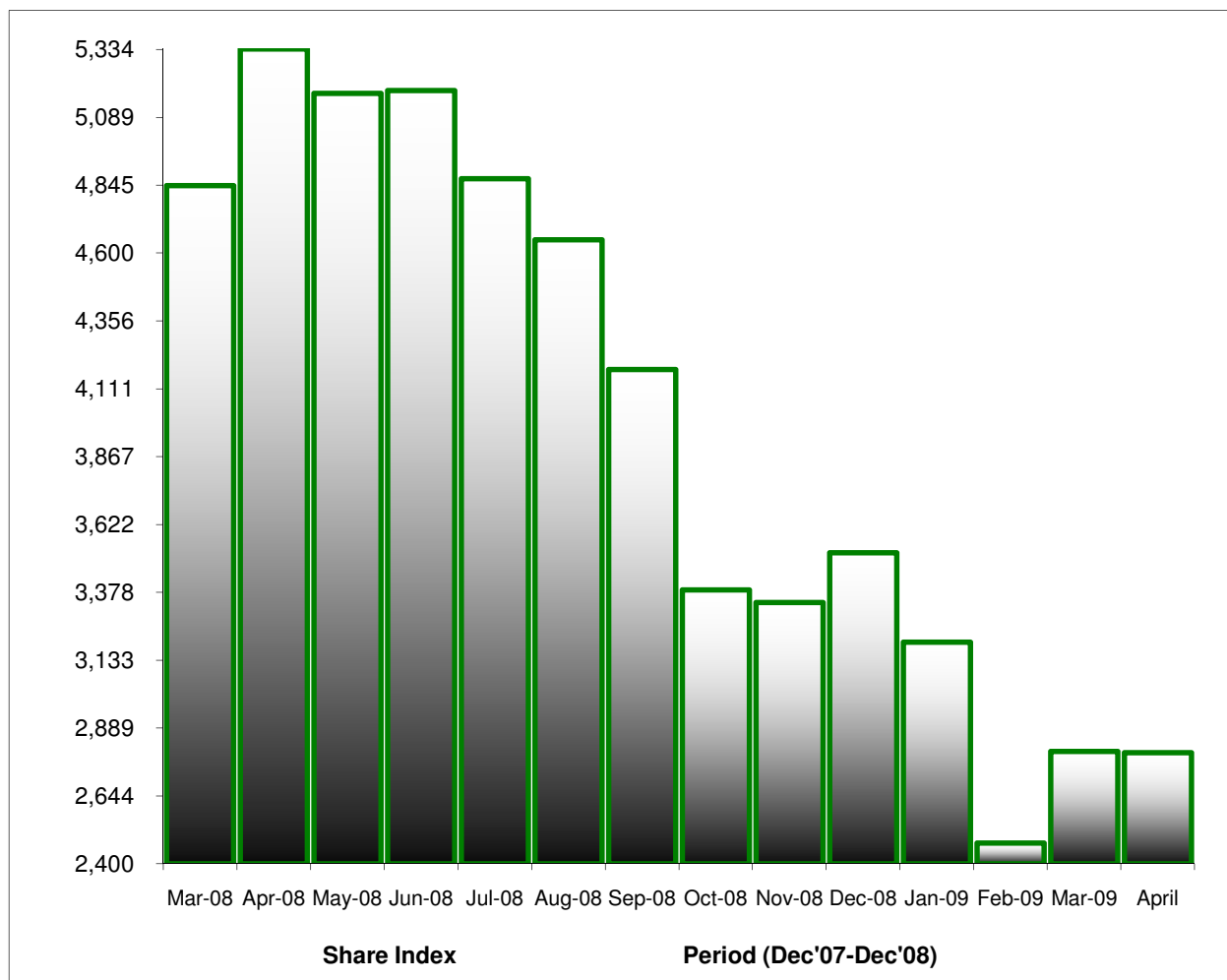


TABLE 5 (a): MONEY SUPPLY

KSh Million

As at end of	MONEY AND QUASI MONEY (M2)				BROAD MONEY (M3)	% CHANGE****
	MONEY (M1)*	QUASI - MONEY		TOTAL (M2)		
		(Commercial Banks)**	(NBFIs)			
2008						
April	436,622	302,408	12,978	752,008	864,105	6.52
May	395,158	304,077	11,995	711,230	839,239	-2.88
June	391,824	314,762	12,723	719,309	840,679	0.17
July	382,174	325,353	12,633	720,160	850,412	1.16
August	383,424	328,254	12,678	724,356	854,952	0.53
September	385,004	338,783	12,677	736,464	859,328	0.51
October	398,571	342,978	12,489	753,883	883,497	2.81
November	393,400	345,872	12,912	751,184	890,233	0.76
December	392,778	360,300	13,531	766,471	901,055	1.22
2009						
January	398,736	352,411	12,623	763,876	895,397	-0.63
February	380,498	374,485	13,343	768,326	900,031	0.52
March	408,331	358,243	14,082	780,656	905,426	0.60
April	382,961	396,291	14,219	793,471	928,728	2.57

Source : Central Bank of Kenya

* Currency in circulation less cash in banks plus all demand deposits except those of Central Government, Local Govt, Banks, non residents and foreign currency deposits.

** All other deposits in commercial banks except those of Central Government.

*** Broad Money (M3) includes M2 and Quasi - Money supplied by Non Bank Financial Institutions

**** Compared with previous month.

***** Provisional

*****From January 2006 in line with the harmonisation of definitions of monetary aggregates within East African Countries(EAC) monetary definitions have been redefined for the following aggregates.

1. Base money =currency outside banks plus deposits at the Central Bank

FIG 5: MONEY SUPPLY (M3)

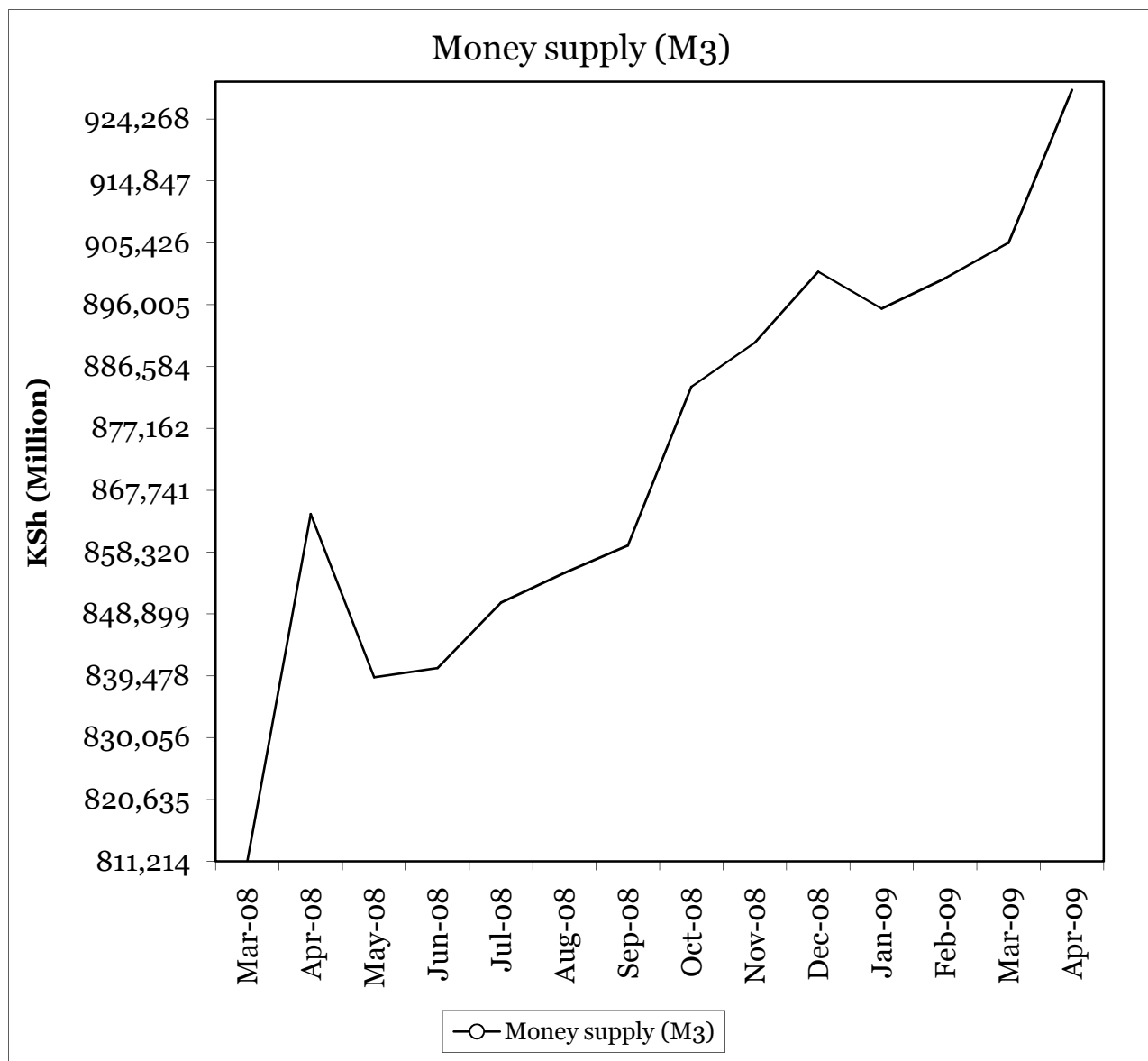


TABLE 5b: FOREIGN EXCHANGE RESERVES

MONTHS	CENTRAL MONETARY AUTHORITY			COMMERCIAL BANKS	GROSS TOTAL	KSh. Million NET FOREIGN EXCHANGE
	CENTRAL BANK	CENTRAL GOVERNMENT	TOTAL			
2008						
April	211,637	1,372	213,009	98,622	311,631	263,236
May	214,110	1,372	215,482	112,211	327,693	280,192
June	223,401	1,372	224,773	151,481	376,254	292,664
July	233,173	1,372	234,545	162,483	397,028	291,398
August	224,770	1,395	226,165	139,078	365,243	271,084
September	231,449	1,471	232,920	136,265	369,185	264,904
October	234,167	1,546	235,713	143,918	379,631	273,651
November	224,119	1,502	225,621	128,855	354,476	260,076
December	223,549	1,533	225,082	137,262	362,344	260,593
2009						
January	220,115	1,553	221,668	125,621	347,289	261,973
February	218,391	1,515	219,906	128,258	348,164	259,398
March	217,444	1,548	218,992	129,215	348,207	267,802
April	214,777	1,548	216,325	136,300	352,625	279,198

Source : Central Bank of Kenya

* Central Government includes reserve position in the Fund and deposits with Crown Agents.

- data not yet available

* Provisional

FIG 6: FOREIGN EXCHANGE RESERVES

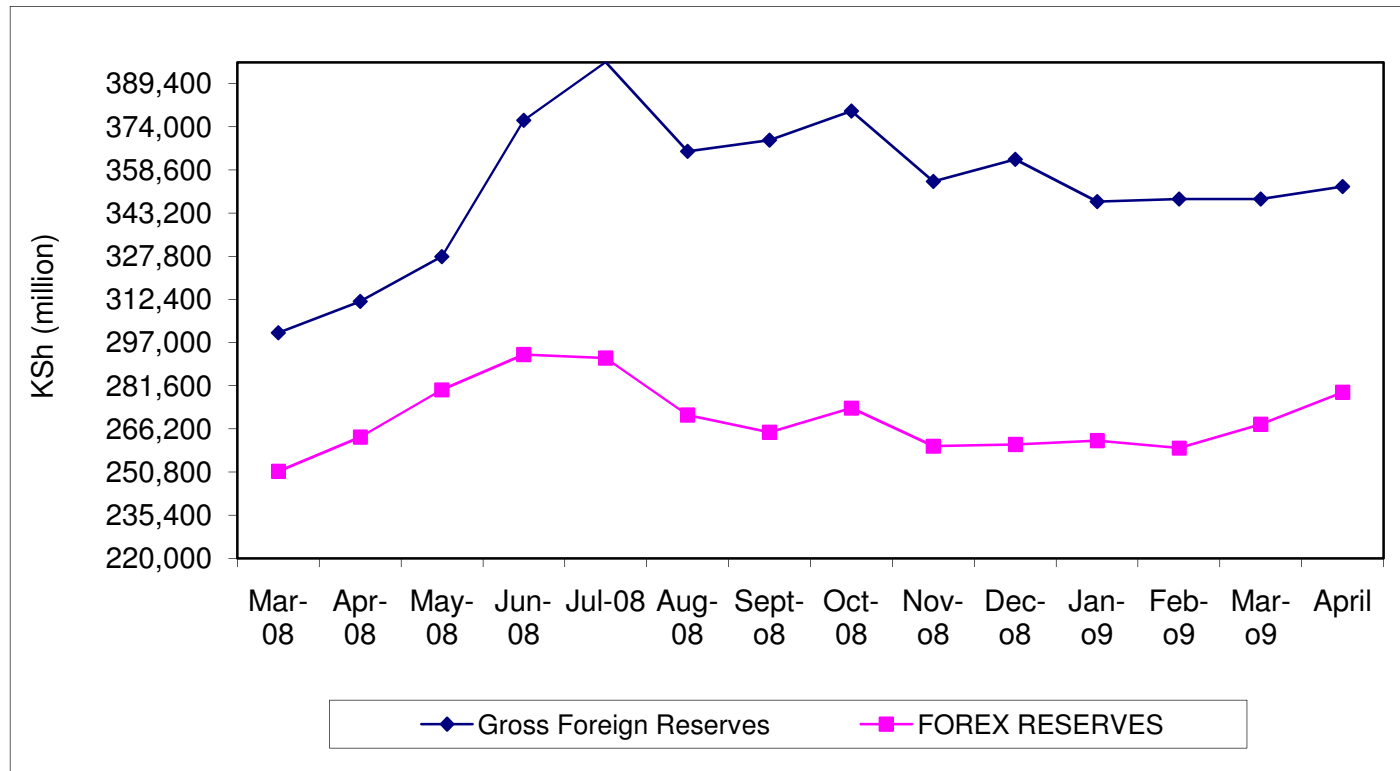


TABLE 6: COFFEE SALES AND PRICES

Months	2007			2008***			2009***		
	QUANTITY (MT)	PRICE (\$ /kg)	PRICE (Ksh /kg)	QUANTITY (MT)	PRICE (\$ /kg)	PRICE (Ksh /kg)	QUANTITY (MT)	PRICE (\$ /kg)	PRICE (Ksh /kg)
January	4,670	2.88	201.48	2,344	2.89	203.63	5,643	2.01	159.90
February	5,064	3.03	211.04	4,899	3.12	220.19	6,356	2.17	172.92
March	6,839	2.99	207.62	6,117	3.09	193.98	8,721	3.13	156.29
April	6,324	2.67	182.91	6,374	2.72	169.14	7,129	2.88	144.22
May	6,991	2.47	166.41	3,179	2.34	144.93			
June	5,451	2.18	145.61	0	0.00	0.00			
July	4,669	2.11	141.77	1,957	2.64	177.50			
August**	0	0	0	2,173	2.61	179.50			
September	3,817	2.36	157.96	3,878	2.37	173.56			
October	4,252	2.24	150.18	2,253	1.66	132.37			
November	2,895	2.21	142.15	2,517	1.95	151.92			
December	1,296	2.86	178.73	3,014	2.08	161.50			
Annual	52,269	2.56	173.91	38,704	2.60	177.22			

Source : Coffee Board of Kenya

* Auction Price

** Nairobi Coffee Exchange was in recess for most of August 2003, 2005,2006,2007&June 2008

*** Figures subject to revision

NB: MT denotes Metric Tonnes

FIG.7: COFFEE SALES AT THE NAIROBI COFFEE EXCHANGE

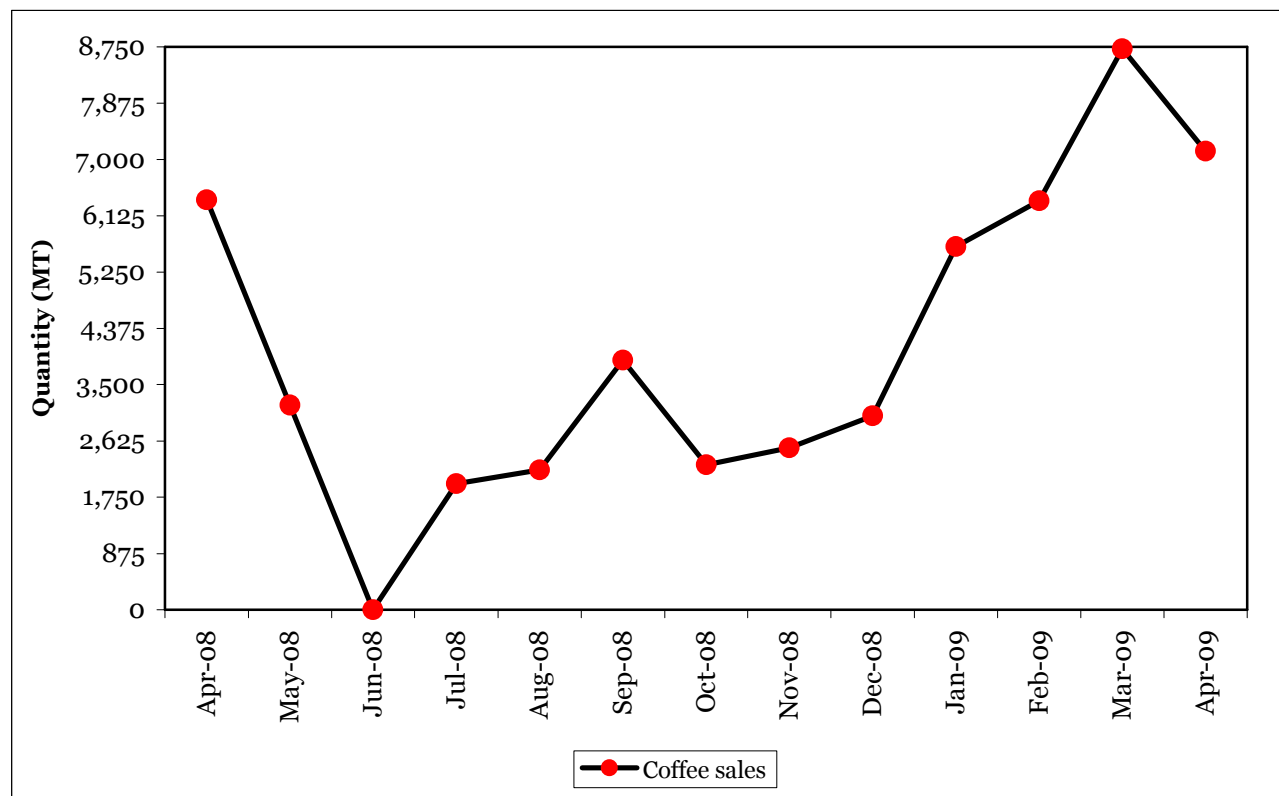


TABLE 7: TEA PRODUCTION AND PRICES*

Months	2008**			2009**		
	QUANTITY	PRICE*	PRICE*	QUANTITY	PRICE*	PRICE*
	(MT)	(\$/kg)	(KShs/kg)	(MT)	(\$/kg)	(KShs/kg)
January	29,745	2.28	153.94	25,484	2.30	182.33
February	24,094	2.42	169.94	21,537	2.27	180.89
March	16,916	2.21	145.10	18,779	2.29	184.04
April	27,415	2.31	143.67			
May	36,402	2.28	140.85			
June	22,817	2.43	154.16			
July	24,239	2.55	169.00			
August	24,494	2.77	187.60			
September	32,061	2.81	195.36			
October	35,307	2.29	175.90			
November	34,406	1.88	146.80			
December	37,922	1.89	146.21			
Annual	345,816	2.32	160.41			

Source:Tea Board of Kenya

MT for Metric Tonnes

*Auction prices

**Figures subject to revision

FIG.8: TEA PRODUCTION

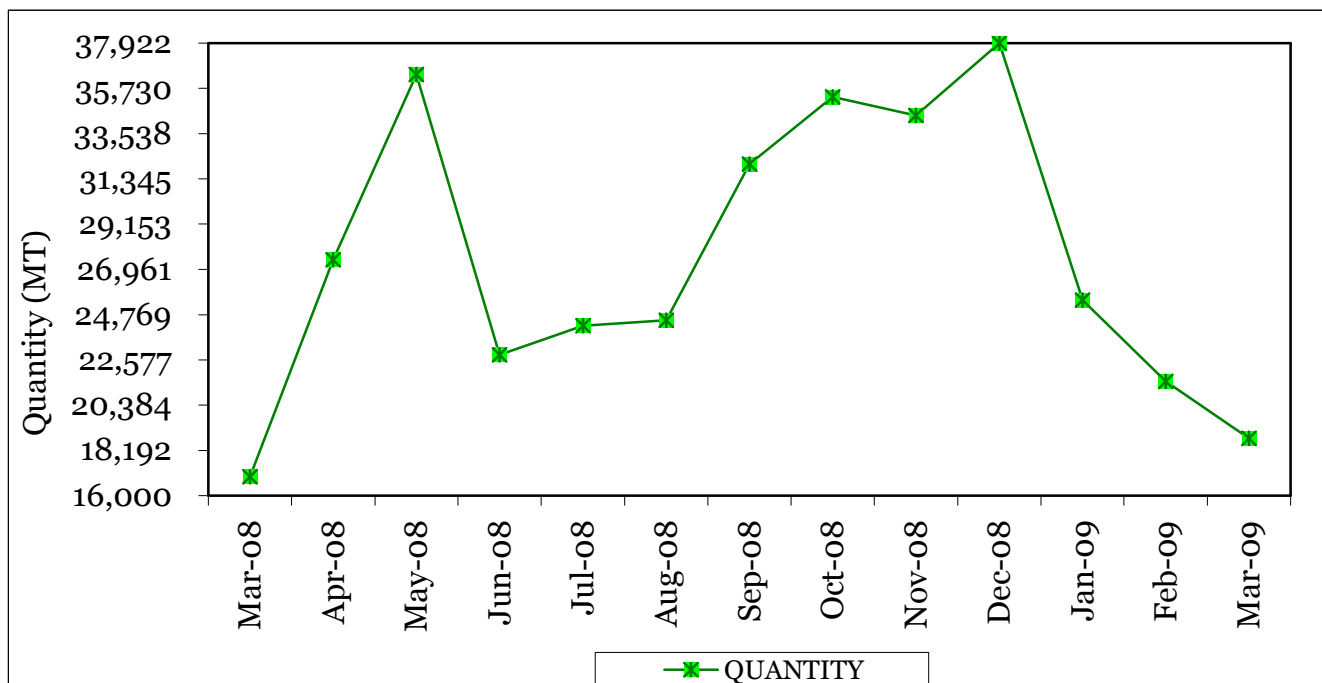


Table 8(a): Average Monthly Retail Prices for Dry Maize in the Year 2008

	Ksh/kg											
Market	Jan	Feb	Mar	Apr	May	June	July	Aug	Sep	Oct	Nov	Dec
KIAMBU	20.0	20.0	20.0	19.2	25.0	30.0	26.3	30.0	30.0	30.0	35.0	26.3
LIMURU	17.5	17.5	17.5	22.5	25.0	26.3	.	27.5	30.0	30.0	32.5	30.0
THIKA	19.7	21.9	16.7	19.1	18.2	.	.	28.6	35.0	.	.	.
GATUNDU	17.9	23.8	23.8	19.1	19.1	.	.	30.4	36.4	31.8	.	.
MUTHITHI	19.1	14.6	.	21.1	24.9	24.0	30.0	30.0	32.5	35.0	35.0	.
MUKUYU	17.5	18.4	17.7	20.3	35.5	27.6	29.3	44.3	30.0	44.8	33.3	32.6
KIRIAINI	16.7	16.7	19.1	19.1	25.4	49.3	50.5	.	.	.	33.3	33.3
ENGINEER	15.0	.	15.9
NANYUKI	18.2	18.5	20.0	22.5	24.0	24.4	22.5	25.0	25.0	25.0	35.0	30.0
NYAHURURU	20.0	20.0	17.5	17.7	20.0	20.0	22.5
MARIAKANI	20.0	20.0	20.0	23.5	25.0	25.0	25.0	30.0	30.0	30.0	.	.
KALOLENI	20.0	20.0	20.7	24.5	25.0	25.0	25.0	25.0	30.0	30.0	.	.
MALINDI	27.8	27.8	27.8	26.9	28.4	30.0	.	28.0	28.0	30.0	30.0	.
KIBAUNI KILIFI	20.0	20.0	20.7	25.0	25.0	25.0	27.0	25.0	25.0	30.0	30.0	.
UKUNDA	22.5	.	30.0	36.0	36.0
MWEMBE TAYARI	25.0	20.0
MACKINON	.	.	30.0	30.0	34.0	30.0	30.0
SEGA	24.0
KONGOWEA	25.0	20.0
GARSEN	25.0	22.5	20.0	23.3	25.0	30.0	15.0
RUNYENJES	15.0	15.0	25.8	20.0	20.0	10.0	32.5
EMBU TOWN	17.5	18.8	15.0	20.0	20.0	.	.	30.0	35.0	26.3	.	.
SIKAGO	17.5	17.5	15.0	17.5	18.5	29.4	.	20.0	25.9	31.8	33.3	30.7
MWINGI	16.0	16.0	16.0	16.5	19.0	.	.	.	28.0	.	.	.
MIGGWAINI	.	.	14.0	14.0	17.8	21.0	.	.	28.0	30.0	.	.
KALUNDU	15.0	16.0	17.0
MACHAKOS TOWN	16.0	17.0	17.0	32.0	30.0
TALA	16.0	18.0	17.0	15.7	17.1	.	.	27.0	28.0	28.0	25.0	31.9
MAUA	.	.	21.3	25.0	31.7	.	.	37.5	37.5	30.0	30.0	30.0
KIANJAI	.	.	16.7	19.5	20.0	.	.	31.1	.	35.6	35.6	29.2
GAKOROMERE	13.6	16.0	12.7	24.3	18.3	.	18.2	.	.	27.3	31.8	.
WOTE	17.0	17.0	18.0	18.0	20.0	22.0	.	.	27.0	27.0	32.0	32.0
GARISA TOWN	.	.	25.0	.	30.3
DARAJA MBILI	17.3	20.5	18.6	20.0	23.0	24.6	22.7	24.1	24.1	31.8	31.8	.
KIBIRIGO	.	20.5	20.5
NYANGUSU	14.3	.	16.7	.	.	31.0	.	25.0
RIOCHANDA	.	16.8	21.4
NYABITE	.	16.0	20.5
MOGONGA	14.3	14.3	.	.	.	31.0
NYAMACHE	16.7	17.1	17.5	.	.	31.0
KIBUYE	.	17.3	18.2	21.4	29.6	27.3	22.7	.
AHERO	23.8	22.7	28.5	27.3	29.6	.
KIBOSWA	.	19.1	22.7	27.3	25.0	27.3	25.0	.
SONDU	20.5	20.5	.	.	27.3	27.3	31.8	.
BONDO	.	20.0	20.0	29.0	25.0	25.5	27.5	27.0	26.5	26.5	.	.
SIAYA	22.7	16.4	19.6	27.3	27.3	.
NGIYA	18.2	22.7	17.3	27.3	29.6	.
UNGUNJA	22.7	15.2	17.3	18.2	27.3	29.6	.
OYUGIS	.	18.6	20.0
KEHACHA	.	17.5	20.0	21.2	24.4	25.0
KABARNET	15.0	15.0	15.0	17.2	22.8	25.0	25.0	25.0	30.0	30.0	.	.
NAKURU TWON	24.2	21.7	22.2	22.2	22.2	.	27.8	27.8	27.8	27.8	27.8	27.8
KAPSABET	.	19.1	19.1	25.0	23.9	25.6	25.7	29.6	26.2	23.8	26.2	.
KITALE	.	17.5	17.5	25.0	26.7	24.1	25.8	28.6	29.5	26.2	.	.
ELDORET	20.0	15.4	15.0	15.5	19.4	22.0	22.0	26.5	31.8	25.0	20.0	20.0
BURN FOREST	12.5	15.0	15.0
TURBO	13.3	13.4	37.5	16.7	18.5	20.7	20.7	21.2	24.1	20.0	20.0	20.0
KIPKAREN	15.0	16.0	16.1	25.0	27.0	26.3	29.4	32.5	20.0	20.0	20.0	22.0
KAJIADO TOWN	25.0	20.0	.	25.0	35.0	21.7	25.0	.	25.0	40.0	40.0	40.0
BUNGOMA TOWN	16.7	16.7	16.7	16.6	20.4	26.0	25.1	25.0	25.0	27.5	30.0	29.0
KIMILILI	.	.	.	16.2	21.8	27.7	27.5	27.0	25.0	27.5	27.5	25.0
KAPSOKWONY	.	16.2	17.5
BUTERE	.	23.6	21.7	23.9	23.1	24.3	.	17.4	23.9	23.9	.	.
KAKAMEGA	20.5	18.2	19.6	21.4	23.6	.	26.4	19.1	22.7	27.3	.	.
MUMIAS	.	.	28.6	26.2	23.1	23.9	.	20.5	23.9	22.0	20.0	.
MUNDETA	19.1	16.7	16.7	19.1	26.2	26.2	.	26.2	28.6	28.6	28.6	.
CHEPTULA	23.8	16.7	16.7	21.4	26.2	26.2	26.2	26.2	28.6	30.0	28.6	.
Mbale	23.8	16.7	.	.	26.2	26.2	.	26.2	26.2	28.6	28.6	.
KAWANGWARE	21.0	22.0	25.0	46.5	30.0	29.3	29.3	30.0	33.3	33.0	33.3	33.3
BURMA	25.0	25.0	25.0	32.5	25.0	25.0	33.3	31.3	35.50	38.9	38.9	44.4
KIKOMBA	21.5	22.0	22.0	23.5	26.3	35.0	35.0	30.0	36.8	35.0	35.0	36.4
KANGEMI	22.0	22.5	23.0	23.0	27.3	30.0	30.0	30.0	31.0	31.0	33.3	33.3
KOROKOCHO	20.0	20.0	21.5	23.0	21.1	26.2	38.9	36.6	33.3	33.3	33.3	36.4
TOI	21.4	21.4	23.8	23.8	26.2	28.6	28.6	31.0	31.0	31.0	33.3	33.3
Overall Average Prices	19.7	18.7	20.2	21.4	23.8	25.9	26.7	29.6	30.9	30.5	30.1	29.7

Table 8(b): Average Monthly Retail Prices for Dry Maize in the Year 2009

MARKET	JAN	FEB	MAR
Kiambu	35.00	35.00	-
Limuru	30.00	32.50	-
Muthithi	35.00	35.00	35.00
Mukuyu	33.33	35.00	33.33
Kiriani	33.33	38.10	-
Nanyuki	35.29	33.33	34.17
Sipili	-	-	46.59
Mariakani	32.00	-	-
Kaloleni	32.00	-	-
Malindi	30.00	-	-
Kibauni Kilifi	35.00	-	-
Garsen	-	-	-
Runyenjes	35.00	37.50	37.50
Embu Town	37.50	37.50	37.50
Siakago	29.55	35.71	37.50
Migwani	-	35.00	33.00
Machakos Town	31.58	33.00	32.00
Tala	30.00	-	-
Mwendantu	31.82	27.27	27.27
Wote	30.00	30.00	30.00
Garissa Town	40.00	38.89	-
Daraja Mbili	28.57	31.82	31.82
Bondo	30.00	35.00	-
Kabarnet	25.00	-	30.00
Kapsabet	23.91	32.61	32.61
Kitale	26.19	28.57	35.00
Eldoret	27.27	29.52	29.76
Turbo	26.19	28.57	-
Kipkaren	25.00	32.50	-
Kajiado Township	-	-	-
Bungoma Town	27.27	-	31.82
Kimilili	28.57	30.95	31.82
Mudete	28.57	35.71	-
Cheptulu	28.57	33.33	-
Kawangware	30.87	56.25	52.39
Burma	38.10	38.10	42.86
Kangemi	37.80	48.75	55.00
Korogocho	40.91	38.10	36.36
Kibera (Toi)	35.00	35.00	35.71
Average	31.55	35.12	36.04

Table 8(c): Average Monthly Retail Prices for Dry Beans Prices (2008)

Market	Ksh per kg											
	Jan	Feb	Mar	Apr	May	Jun	Jul	Aug	Sep	Oct	Nov	Dec
KIAMBU	38.1	35.7	35.5	60.0	71.7	75.0	57.5	75.0	80.0	75.0	80.0	75.0
LIMURU	75.0	60.0	60.0	70.0	75.0	70.0	.	75.0	75.0	75.0	75.0	70.0
THIKA	55.0	54.6	54.6	45.5	60.0	.	.	.	80.0	.	.	.
GATUNDU	39.3	45.2	42.9	47.6	38.1	.	.	76.2	72.7	76.2	.	.
MUTHITHI	57.1	52.4	.	55.4	61.8	56.7	65.0	70.0	75.0	100.0	75.0	.
MUKUYU	38.1	38.1	56.1	59.1	54.8	59.1	58.1	59.1	59.1	48.9	70.5	74.6
KIRIAINI	47.8	47.8	63.6	.	60.9	60.9	72.2	.	.	.	76.2	76.2
ENGINEER	45.0	.	57.1
NANYUKI	40.0	42.5	50.0	65.0	46.7	69.8	70.8	63.6	80.0	40.8	80.0	80.0
NYAHURURU	39.1	50.0	56.2	63.8	67.5	38.3	60.0
MARIAKANI	50.0	60.0	60.0	60.0	63.3	70.0	70.0	70.0	80.0	80.0	.	.
KALOLENI	50.0	60.0	60.0	60.0	63.3	70.0	70.0	80.0	80.0	80.0	.	.
MALINDI	70.6	75.0	68.2	72.2	76.4	78.2	60.0	75.0	70.0	80.0	80.0	75.0
KIBAUNI KILIFI	60.0	60.0	65.0	53.3	66.7	70.0	68.0	68.0	70.0	80.0	.	.
UKUNDA	50.0	.	50.0	63.0	68.0
MWEMBE TAYARI	60.0	48.0
MACKINON	.	.	65.0	62.0	65.0	70.0	70.0
SEGA	55.0
KONGOWEA	70.0	55.0
GARSEN	50.0	55.0	60.0	60.0	60.0	70.0	65.0
RUNYENJES	45.0	41.3	68.8	55.0	57.5	30.0	80.0
EMBU TOWN	40.0	40.0	50.0	56.7	60.0	50.0	.	70.0	90.0	55.0	.	.
SIAKAGO	40.0	42.5	50.0	55.0	53.6	66.8	.	20.0	41.4	90.9	81.8	71.4
MWINGI	40.0	40.0	50.0	60.0	50.0	50.0	.	.	56.0	.	.	.
MIGGWAINI	.	.	40.0	55.0	55.0	55.0	.	.	63.0	70.0	.	.
KALUNDU	50.0	58.0	70.0
MACHAKOS TOWN	55.0	45.0	45.0	70.0	47.7
TALA	27.0	40.0	40.0	55.7	57.1	.	.	70.0	70.0	68.0	70.0	70.0
MAUA	.	.	62.5	67.8	47.5	.	.	81.3	81.3	81.5	90.0	90.0
KIANJAI	.	.	50.0	56.7	50.0	.	.	66.7	.	83.3	.	35.1
GAKOROMERE	36.4	40.9	55.0	36.7	49.6	.	60.6	.	.	63.6	75.0	.
WOTE	50.0	52.5	60.0	63.0	64.5	61.5	.	.	65.0	65.0	80.0	80.0
GARISA TOWN	.	.	66.7	.	70.8
DARAJA MBILI	40.9	54.6	46.4	61.4	48.9	39.1	41.1	50.0	56.8	50.0	50.0	.
KIBIRIGO	.	45.5	47.6
NYANGUSU	28.6	.	42.9	.	.	54.6	.	36.4
RIOCHANDA	.	46.2	54.6
NYABITE	.	42.3	54.6
MOGONGA	38.1	36.4	.	.	.	54.6
NYAMACHE	27.3	47.6	40.2	.	.	52.3
KIBUYE	.	65.9	68.2	68.2	72.7	59.5	45.5	.
AHERO	61.9	61.9	72.5	52.4	56.8	.
KIBOSWA	.	77.3	47.7	72.7	59.1	68.2	45.5	.
SONDU	52.4	52.4	.	.	54.6	59.1	45.5	.
BONDO	.	85.0	85.0	69.2	85.0	87.5	80.0	80.0	80.0	90.0	.	.
SIAYA	54.6	53.0	90.9	81.8	90.9	.
NGIYA	47.2	54.6	68.2	90.9	68.2	.
UNGUNJA	45.5	52.3	51.1	72.7	63.6	68.2	.
OYUGIS	.	66.4	71.4
KEHACHA	.	54.6	68.2	66.7	59.1	54.6
KABARNET	50.0	50.0	50.0	59.6	72.3	75.0	75.0	60.0	37.5	75.0	.	.
NAKURU TWON	52.2	38.9	38.9	51.1	36.1	38.9	33.3	33.3	33.3	33.3	66.7	66.7
KAPSABET	.	71.4	68.2	72.7	71.0	60.9	46.5	68.2	72.7	72.7	68.2	.
KITALE	.	54.1	54.6	68.2	74.4	68.2	49.5	57.1	54.6	.	.	.
ELDOROT	59.1	43.2	68.2	75.2	78.0	63.0	62.5	62.5	70.0	65.0	65.0	70.0
BURN FOREST	68.2	68.2	60.9
TURBO	42.5	53.8	.	70.0	73.8	67.0	53.0	50.0	50.0	50.0	65.0	67.5
KIPKAREN	45.5	54.6	54.6	68.2	62.5	60.6	37.0	54.6	60.0	63.6	63.6	63.6
KAJADO TOWN	60.0	70.0	80.0	36.0	67.5	66.7	50.0	60.0	70.0	80.0	80.0	80.0
BUNGOMA TOWN	47.6	61.9	68.2	.	60.6	64.8	65.2	52.4	70.0	70.0	70.0	70.0
KIMILILI	.	.	46.7	67.1	66.7	80.0	60.0	70.0	57.5	65.0	60.0	.
KAPSOKWONY	.	40.5	47.0
BUTERE	55.8	56.5	50.8	73.9	70.5	50.3	.	54.6	68.2	68.2	.	.
KAKAMEGA	54.6	68.2	59.1	50.0	36.4	.	59.1	59.1	63.6	.	.	.
MUMIAS	.	.	.	70.5	70.1	58.4	.	50.0	68.2	38.1	40.0	.
MUNDETA	71.4	71.4	71.4	71.4	61.9	61.9	.	71.4	71.4	83.3	71.4	.
CHEPTULA	65.0	71.4	71.4	71.4	71.4	71.4	71.4	76.2	76.2	83.3	76.2	.
Mbale	.	65.2	.	71.4	71.4	64.3	.	71.4	71.4	76.2	76.2	.
KAWANGWARE	45.0	50.0	60.0	68.0	70.0	72.7	53.1	80.0	80.0	86.4	90.5	90.5
BURMA	45.0	50.0	50.0	60.0	70.0	80.0	80.0	81.8	.	83.3	83.3	75.0
KIKOMBA	48.0	50.0	60.0	65.0	80.0	75.0	83.3	88.9	88.9	86.0	88.9	81.8
KANGEMI	45.0	55.0	65.0	70.0	75.0	80.0	80.0	80.0	85.7	85.7	90.5	90.5
KOROKOCHO	43.5	45.0	50.0	62.5	62.5	72.7	72.7	90.0	90.0	87.0	87.0	79.2
TOI	47.6	50.0	63.6	72.7	76.2	76.2	76.2	85.7	85.7	85.7	90.5	90.5
Overall Average Prices	50.1	52.9	56.8	60.9	64.2	63.3	60.3	66.0	68.7	69.8	72.3	69.1

Table 8(c): Average Monthly Retail Prices for Dry Beans Prices (2009)

MARKET	JAN	FEB	MAR
Kiambu	80.00	80.00	
Limuru	80.00	80.00	
Muthithi	75.00	75.00	75.00
Mukuyu	63.64	76.19	72.73
Kiriaini	69.57	69.57	
Nanyuki	85.00	88.89	87.00
Sipili	60.00	60.00	60.00
Mariakani	80.00		
Kaloleni	80.00		
Malindi	75.00		
Kibauni Kilifi	80.00		
Garsen	70.00		
Runyenjes	80.00	85.00	85.00
Embu Town	80.00	80.00	85.00
Siakago	71.43	76.19	80.95
Migwani		84.21	80.00
Machakos Town		75.00	75.00
Tala	62.00		
Mwendantu	63.64	63.64	59.09
Wote	60.00	60.00	60.00
Garissa Town	66.67	70.59	
Daraja Mbili	52.17	54.55	59.09
Bondo	97.50	100.00	
Kabarnet	60.00		65.00
Kapsabet	65.22	65.22	69.57
Kitale	72.73	63.64	68.18
Eldoret	67.50	70.00	70.00
Turbo	72.50	65.00	70.00
Kipkaren	63.64	63.64	
Kajiado Township			
Bungoma Town	59.09		63.64
Kimilili	57.14	54.55	63.64
Mudete	76.19	80.95	
Cheptulu	76.19	80.95	
Kawangware	82.50	82.86	64.05
Burma	80.00	100.00	100.00
Kangemi	67.86	53.57	80.00
Korogocho	83.33	77.27	80.95
Kibera (Toi)	95.24	90.91	95.24
Average	72.52	74.25	73.71

Table 9: Export of Coffee, Tea and Horticultural Produce

Month	COFFEE *		TEA		HORTICULTURE	
	QUANTITY	VALUE	QUANTITY	VALUE	QUANTITY	VALUE
	(MT)	(KSh. Million)	(MT)	(KSh. Million)	(MT)	KSh. Million
Apr-08	4,611.3	1,107.7	40,724.4	5,464.0	17,969	4,257
May-08	4,820.5	1,128.1	30,518.6	4,525.4	16,940	4,052
Jun-08	3,602.7	838.6	31,644.4	4,917.2	15,312	3,480
Jul-08	3,158.5	769.2	40,370.6	6,667.2	15,262	3,882
Aug-08	3,094.6	759.0	33,043.3	5,811.1	13,996	3,997
Sep-08	3,348.0	805.0	24,829.6	4,986.1	14,928	3,524
Oct-08	2,774.5	718.2	31,955.8	6,400.4	15,579	3,968
Nov-08	3,421.2	909.6	28,369.5	5,140.0	14,740	4,029
Dec-08	2,680.4	648.2	39,089.5	6,251.1	14,027	4,040
Jan-09	4,096.6	1,013.7	34,946.6	6,138.5	15,879	4,662
Feb-09	4,308.8	1,200.0	27,198.9	5,110.6	16,070	4,121
Mar-09	5,265.0	1,458.3	28,461.7	5,473.3	17,525	4,339
Apr-09	5,964.4	1,529.9	21,372.2	4,238.0	14,844	3,692

Source: Kenya Revenue Authority

- Figures not available

*Unroasted Coffee

** Provisional

MT denotes Metric tonnes

Table 10: Monthly Exports of Horticultural Products

Months	CUT FLOWERS				FRUITS				VEGETABLES			
	2008**		2009**		2008**		2009**		2008**		2009**	
	QUANTITY (MT)	VALUE (KSh. Million)	QUANTITY (MT)	VALUE (KSh. Million)	QUANTITY (MT)	VALUE (KSh. Million)	QUANTITY (MT)	VALUE (KSh. Million)	QUANTITY (MT)	VALUE (KSh. Million)	QUANTITY (MT)	VALUE (KSh. Million)
January	8,494.94	5,288.07	7,842.90	3,311.00	533.40	63.05	2,382.74	370.06	7,524.88	1,332.79	5,653.51	981.41
February*	10,178.52	6,806.08	8,204.71	2,964.04	1,431.75	111.22	2,624.70	238.52	7,290.64	2,802.23	5,240.94	918.89
March	9,116.38	4,836.41	8,360.12	2,867.54	2,476.80	203.31	2,548.68	209.17	7,334.14	1,498.72	6,615.95	1,262.18
April	8,100.43	2,737.35	7,317.02	2,427.45	2,263.94	180.92	2,162.59	156.52	7,604.86	1,338.55	5,364.19	1,107.55
May	8,120.99	2,798.79			1,727.73	130.44			7,090.86	1,122.58		
June	6,785.27	2,173.12			1,718.46	169.36			6,808.71	1,137.46		
July	6,083.05	2,072.24			2,573.05	686.15			6,605.48	1,123.60		
August	6,239.22	2,766.14			1,653.59	199.49			6,103.07	1,031.84		
September	6,994.05	2,246.42			1,031.31	119.54			6,902.52	1,158.22		
October	8,026.54	2,596.09			484.62	56.18			7,068.08	1,315.83		
November	7,909.34	2,773.86			602.77	65.60			6,227.65	1,189.57		
December	7,604.69	2,876.41			626.40	85.97			5,796.13	1,077.50		
Total	93,653.42	39,970.99			17,123.82	2,071.24			82,357.02	16,128.90		

Source: Horticultural Crops Development Authority

- data not available

** Figures subject to revision

Table 11: Kenya's External Trade, March 2008 – March 2009

KSh million						
MONTH	Domestic Exports	Re-Exports	Total Exports	Total Imports	Volume of Trade	Home use Imports
2008						
April	27,893.33	1,292.86	29,186.19	54,785.45	83,971.64	51,389.44
May	24,436.30	1,303.31	25,739.61	56,877.43	82,617.03	57,151.43
June	23,832.87	1,477.07	25,309.94	49,957.26	75,267.20	53,371.94
July	28,667.31	1,671.58	30,338.89	70,300.09	100,638.98	60,557.64
August	27,487.90	2,265.53	29,753.42	72,644.67	102,398.09	72,423.12
September	26,618.40	1,869.18	28,487.58	74,773.03	103,260.61	67,656.83
October	29,556.05	2,984.15	32,540.20	74,855.83	107,396.03	75,450.09
November	27,434.29	1,624.36	29,058.65	68,387.90	97,446.55	66,706.10
December	27,405.44	1,938.39	29,343.83	68,567.89	97,911.72	67,312.92
2009						
January	26,120.79	1,238.96	27,359.75	66,177.18	93,536.93	2,707.33
February	27,362.15	1,314.05	28,676.20	60,563.13	89,239.33	60,327.13
March	29,123.55	2,346.16	31,469.71	61,296.80	92,766.51	61,697.58
April	25,206.94	1,141.33	26,348.27	65,799.21	92,147.47	63,773.78

Source: Customs Department

*** Provisional**

Table 12: Major Destinations of Domestic Exports, March 2008 – March 2009

KSh Million											
Month	Uganda	Tanzania	United Kingdom	Pakistan	Netherlands	Egypt	Germany	Rwanda	USA	United Arab Emirates	France
2008											
March	3,063.24	1,756.01	3,118.21	683.00	2,256.37	1,545.47	591.34	505.26	1,371.59	784.62	389.71
April	3,656.76	2,130.95	2,892.92	924.21	2,044.85	2,102.05	528.64	502.74	1,634.07	845.66	429.07
May	2,564.19	1,873.91	2,998.92	1,306.61	2,005.69	663.55	421.87	439.56	1,509.75	623.16	305.94
June	2,409.80	2,173.29	2,867.54	1,171.98	2,100.71	668.94	447.39	556.14	1,661.92	517.39	362.69
July	3,810.84	2,371.58	3,187.84	2,042.81	1,692.87	990.34	372.82	792.28	1,590.02	522.07	525.91
August	3,031.60	2,402.28	2,934.22	1,264.65	1,650.31	1,483.11	301.43	947.01	2,231.04	416.56	434.38
September	3,170.79	2,493.71	2,961.86	973.01	1,812.64	1,148.08	539.78	729.96	1,911.48	435.57	441.95
October	3,614.23	2,511.91	3,603.99	1,115.82	2,533.31	1,645.78	640.78	917.09	1,654.79	539.40	447.12
November	3,011.92	2,335.70	3,053.52	1,050.66	2,136.05	1,230.38	474.03	545.11	1,883.01	385.11	314.50
December	3,504.30	2,191.03	2,920.00	1,504.05	2,178.31	1,902.93	533.73	581.25	1,779.29	448.55	341.86
2009											
January	3,361.59	2,369.01	2,961.80	2,071.33	2,468.70	916.17	730.97	664.56	1,158.51	482.26	405.98
February	4,032.20	1,841.43	3,172.60	1,265.17	2,527.16	847.16	662.15	692.77	1,742.88	581.83	489.42
March	3,449.74	2,198.30	3,375.02	752.59	2,447.81	1,183.77	547.99	586.57	1,742.15	809.17	476.02
April	3,366.66	2,242.99	2,924.13	953.92	2,001.06	776.69	726.14	619.99	1,249.87	773.67	303.27

Source: Customs Department

* Provisional

Table 13: Major Origins of Imports, March 2008 – March 2009

KSh Million											
Month	United Arab Emirates	United Kingdom	South africa	Saudi Arabia	Japan	India	USA	Germany	Netherlands	France	China
2008											
March	6,839.39	1,746.01	3,066.48	4,363.49	3,487.52	6,476.49	2,984.79	1,866.69	577.86	1,042.04	3,428.89
April	12,274.48	1,749.26	3,155.40	2,319.25	3,484.89	5,981.93	2,910.16	1,921.65	1,369.27	1,020.72	3,311.61
May	10,534.04	1,873.07	3,005.93	1,302.39	3,035.20	9,281.27	3,606.34	1,482.98	885.92	879.66	4,430.19
June	3,515.33	1,835.13	3,312.94	844.12	2,904.38	6,384.15	1,442.66	1,583.49	1,066.24	888.67	5,213.39
July	19,339.13	1,774.91	3,886.96	2,048.11	4,811.18	7,921.31	2,628.53	2,189.02	652.05	1,156.11	4,678.81
August	6,507.93	2,568.88	3,314.31	2,488.28	4,062.72	10,098.94	1,876.34	2,707.15	1,545.58	1,007.23	4,869.16
September	12,326.45	1,873.49	3,641.87	4,813.22	3,605.69	8,705.56	2,108.17	3,166.97	935.69	1,385.47	5,399.50
October	7,753.46	3,853.50	4,723.11	1,414.43	3,677.07	7,769.47	2,538.19	2,402.06	921.52	1,470.71	6,774.62
November	5,247.67	2,601.72	7,604.02	996.78	3,517.57	9,794.27	2,183.26	2,651.44	1,781.43	1,655.30	7,194.15
December	6,637.34	3,015.16	3,829.78	3,147.95	4,773.55	6,200.32	1,739.14	2,519.94	1,349.98	2,548.16	7,327.06
2009											
January	3,314.77	2,370.63	4,112.81	1,966.25	4,521.63	6,572.44	8,392.77	2,255.11	1,962.77	1,530.99	5,802.14
February	5,641.51	2,059.46	4,738.94	2,806.33	2,265.48	5,370.46	2,125.21	1,553.16	2,826.51	1,566.75	6,344.45
March	5,790.29	2,363.74	8,614.62	1,473.44	3,076.06	5,663.38	4,230.35	2,198.25	1,826.88	1,791.77	5,493.90
April	2,643.10	3,980.97	6,091.41	2,240.58	3,551.89	8,341.77	4,045.56	1,700.95	2,107.65	1,595.81	7,017.61

Source: Customs Department

* Provisional

Table 12 (a): Domestic Exports by Broad Economic Category

DESCRIPTION	2007	2008										2009			
	Total	Apr	May	June	July	August	September	October	November	December	Total	January	February	March	April
FOOD AND BEVERAGES	105,765	12,176	10,249	10,155	12,300	10,468	9,804	11,967	10,732	11,103	129,916	11,440	10,534	11,986	10,534
INDUSTRIAL SUPPLIES (Non-Food) ..	66,441	6,967	6,396	6,022	8,659	10,001	8,904	8,833	8,429	7,332	92,204	6,688	8,272	8,076	6,696
FUEL AND LUBRICANTS	9,346	487	378	332	268	45	423	468	523	607	5,949	386	319	277	172
MACHINERY & OTHER CAPITAL EQUIPMENT ..	4,427	674	526	225	324	323	316	473	300	729	5,546	588	351	539	701
TRANSPORT EQUIPMENT	3,472	336	232	430	385	260	264	300	406	304	3,657	317	537	505	704
CONSUMER GOODS NOT ELSEWHERE SPECIFIED ..	72,161	7,255	6,654	6,661	6,730	6,387	6,904	7,513	7,041	7,323	85,724	6,701	7,347	7,723	6,399
GOODS NOT ELSEWHERE SPECIFIED ..	7	0	0	8	0	4	3	2	3	7	32	1	2	18	1
TOTAL	261,619	27,893	24,436	23,833	28,666	27,488	26,618	29,556	27,434	27,405	323,029	26,121	27,362	29,124	25,207
PERCENTAGE SHARES:															
Food and Beverages	40.43	43.65	41.94	42.61	42.91	38.08	36.83	40.49	39.12	40.51	40.22	43.80	38.50	41.16	41.79
Industrial Supplies (Non-Food)	25.40	24.98	26.17	25.27	30.21	36.38	33.45	29.89	30.72	26.75	28.54	25.60	30.23	27.73	26.56
Fuel and Lubricants	3.57	1.74	1.55	1.39	0.93	0.16	1.59	1.58	1.91	2.21	1.84	1.48	1.17	0.95	0.68
Machinery and other Capital Equipment ..	1.69	2.41	2.15	0.94	1.13	1.18	1.19	1.60	1.09	2.66	1.72	2.25	1.28	1.85	2.78
Transport Equipment	1.33	1.20	0.95	1.80	1.34	0.95	0.99	1.02	1.48	1.11	1.13	1.21	1.96	1.73	2.79
Consumer Goods not elsewhere specified	27.58	26.01	27.23	27.95	23.48	23.24	25.94	25.42	25.67	26.72	26.54	25.65	26.85	26.52	25.39
Goods not elsewhere specified	0.00	0.00	0.00	0.03	0.00	0.01	0.01	0.01	0.01	0.03	0.01	0.00	0.01	0.06	0.00
TOTAL	100	100	100	100	100	100	100	100	100	100	100	100	100	100	100

Source: Annual Trade Report - Customs & Excise Dept.

* Provisional

- Data being verified

Table 13 (a): Imports by Broad Economic Category

Million KSh

DESCRIPTION	2007			2008								2009			
	Total	Apr	May	June	July	August	Sept	Oct	Nov	Dec	Total	January	February	March	April
FOOD AND BEVERAGES	42,483.1	3,662.9	2,712.5	2,476.0	2,258.0	3,393.0	4,125.0	6,822.0	9,198.0	5,005.0	53,409.4	4,342.0	3,980.0	8,649.0	8,897.0
INDUSTRIAL SUPPLIES (Non-Food) ..	193,819.3	17,444.9	15,832.1	19,185.0	19,453.0	20,072.0	21,890.8	25,880.0	23,454.0	20,522.0	237,249.7	21,518.0	15,694.9	19,422.0	17,858.0
FUEL AND LUBRICANTS	126,911.2	15,706.1	18,042.1	11,728.0	25,978.0	23,492.0	23,862.3	17,980.0	11,433.0	11,423.0	205,859.5	10,104.0	11,012.5	9,890.0	14,352.0
MACHINERY & OTHER CAPITAL EQUIPMENT ..	97,336.5	7,651.6	8,834.4	7,517.0	9,921.0	9,434.0	13,646.9	10,559.0	11,112.0	18,743.0	127,118.9	11,035.0	12,177.0	10,300.0	11,234.0
TRANSPORT EQUIPMENT	97,427.0	6,575.0	7,225.9	5,035.0	8,018.0	11,963.0	4,487.0	8,263.0	7,855.0	7,812.0	86,574.9	13,396.0	9,339.6	7,613.0	8,646.0
CONSUMER GOODS NOT ELSEWHERE SPECIFIED ..	44,883.8	3,738.4	4,057.6	4,005.0	4,375.0	4,078.0	4,688.4	5,273.0	5,309.0	4,899.0	53,464.3	5,731.0	5,352.0	4,975.0	4,811.0
GOODS NOT ELSEWHERE SPECIFIED ..	2,259.7	6.6	172.9	11.0	0.0	213.0	207.0	79.0	27.0	164.0	903.4	51.0	3,007.1	448.0	1.0
TOTAL	605,120.6	54,785	56,877	49,957	70,003	72,645	74,773	74,856	68,388	68,568	764,580.2	66,177	60,563	61,297	65,799
PERCENTAGE SHARES:															
Food and Beverages	7.02	6.69	4.77	4.96	3.23	4.67	5.52	9.11	13.45	7.30	6.99	6.56	6.57	14.11	13.52
Industrial Supplies (Non-Food)	32.03	31.84	27.84	38.40	27.79	27.63	29.28	34.57	34.30	29.93	31.03	32.52	25.91	31.69	27.14
Fuel and Lubricants	20.97	28.67	31.72	23.48	37.11	32.34	31.91	24.02	16.72	16.66	26.92	15.27	18.18	16.13	21.81
Machinery and other Capital Equipment ..	16.09	13.97	15.53	15.05	14.17	12.99	18.25	14.11	16.25	27.33	16.63	16.67	20.11	16.80	17.07
Transport Equipment	16.10	12.00	12.70	10.08	11.45	16.47	6.00	11.04	11.49	11.39	11.32	20.24	15.42	12.42	13.14
Consumer Goods not elsewhere specified	7.42	6.82	7.13	8.02	6.25	5.61	6.27	7.04	7.76	7.14	6.99	8.66	8.84	8.12	7.31
Goods not elsewhere specified	0.37	0.01	0.30	0.02	0.00	0.29	0.28	0.11	0.04	0.24	0.12	0.08	4.97	0.73	0.00
TOTAL	100.00	100.00	100.00	100.00	100.00	100.00	97.50	100.00	100.00	100.00	100.00	100.00	100.00	100.00	100.00

Source: Annual Trade Report - Customs & Excise Dept.

* Provisional

- Data being verified

Table 14(a): Local Electricity Generation by Source

MONTH	HYDRO	GEO - THERMAL	THERMAL	TOTAL
Apr-08	280.57	87.56	122.62	490.76
May-08	291.87	87.19	118.43	497.49
Jun-08	252.63	87.74	122.54	462.91
Jul-08	250.97	88.33	140.72	480.02
Aug-08	269.21	80.39	132.15	481.75
Sep-08	257.53	78.51	121.65	457.69
Oct-08	268.32	85.26	122.15	475.73
Nov-08	262.30	85.44	113.45	461.18
Dec-08	252.08	106.72	112.42	471.22
Jan-09	231.75	116.58	127.48	475.81
Feb-09	215.16	99.77	113.16	428.09
Mar-09	237.11	106.07	129.83	473.01
Apr-09	268.32	85.26	122.15	475.73

Source: KPL&C

Fig 9: Electricity Generation by Source

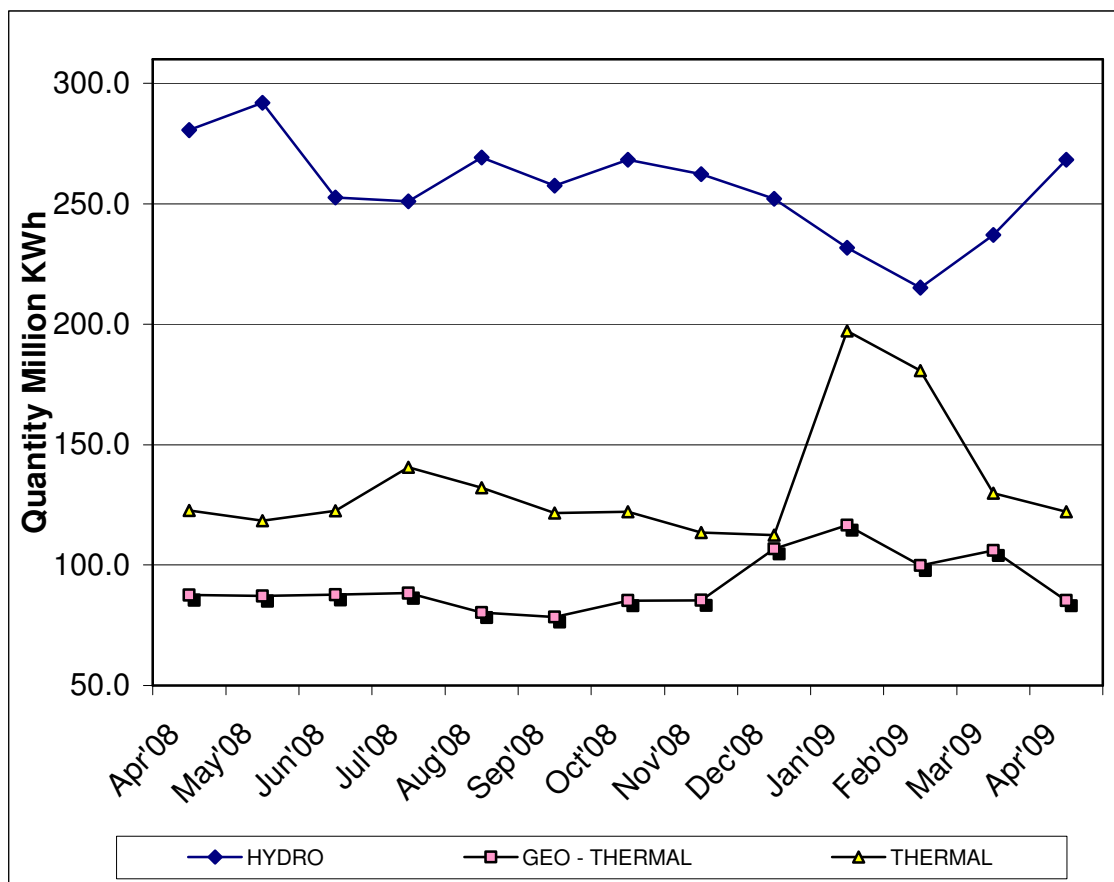


Table 14(b): Generation and Consumption of Electricity

Month	GENERATION						CONSUMPTION				
	LOCAL GENERATION	IMPORTS			EPPS (Aggreko)	TOTAL GENERATION	TOTAL KPLC SALES	RURAL ELECTRIFICATION	EXPORTS TO UGANDA	TOTAL DOMESTIC CONSUMPTION*	POWER LOSSES
		UGANDA	TANZANIA	Total Imports							
2008*											
April	490.8	1.1	0.10	1.2	46.9	538.8	415.1	19.78	10.41	434.9	-93.5
May	497.5	1.6	0.11	1.7	57.7	556.6	426.5	20.48	7.95	447.0	-101.6
June	462.9	1.7	0.11	1.8	73.6	538.3	444.1	21.17	3.64	465.3	-69.4
July	480.0	1.6	0.12	1.7	82.4	564.2	402.5	20.73	3.59	423.3	-137.3
August	481.8	2.1	0.11	2.2	77.6	561.5	448.1	21.90	2.14	470.0	-89.4
September	457.7	2.1	0.10	2.2	75.5	535.4	427.8	20.16	2.27	448.0	-85.1
October	475.7	2.3	0.11	2.4	75.5	553.6	423.9	20.96	3.07	444.9	-105.6
November	461.2	2.5	0.10	2.6	75.5	539.4	429.3	19.98	3.05	449.3	-87.0
December	471.2	2.5	0.10	2.6	62.3	536.2	404.8	18.5	2.31	423.3	-110.6
2009											
January	475.8	2.3	0.00	2.3	69.8	547.9	432.1	22.7	2.20	454.8	-90.9
February	478.1	2.1	0.00	2.1	67.6	547.7	418.0	20.1	2.63	438.0	-107.0
March	473.0	2.8	0.09	2.9	75.2	551.0	394.7	19.9	2.41	414.6	-134.0
April	475.7	2.3	0.11	2.4	75.5	553.6	417.9	20.4	3.07	438.3	-112.2

NB: Difference between amount purchased from KENGEN and imported from Uganda and consumption reflect transmission, distribution and commercial losses

*Provisional

** Excludes exports

Fig 10: Electricity Generation Consumption and Power Losses

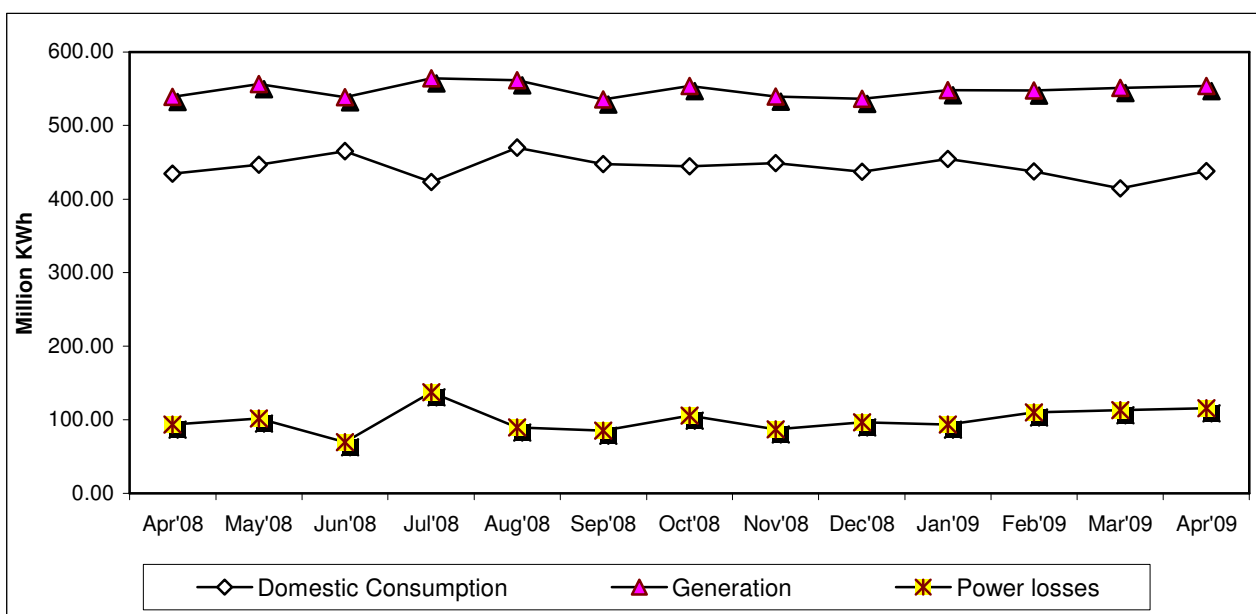


Table 14 (c): Consumption of Petroleum Fuels

PERIOD	'000 MT								
	LIGHT DIESEL OIL	JET FUEL	FUEL OILS	MOTOR SPIRIT	ILLUMINATING KEROSENE	HEAVY DIESEL OIL	L.P.G.	AVIATION GASLENE	TOTAL FUELS
March	87.4	46.6	44.3	28.7	16.6	2.2	4.5	0.14	230.4
April	88.3	43.6	47.9	28.6	21.8	2.3	5.3	0.09	237.9
May	96.2	44.8	66.7	28.7	21.0	2.1	5.2	0.13	264.8
June	85.5	40.2	42.8	26.1	19.8	1.9	5.1	0.11	221.6
July	95.6	46.9	38.4	30.5	22.0	2.1	21.7	0.46	257.6
August	104.0	49.5	57.1	27.5	20.7	2.3	5.1	0.17	266.5
September	79.4	48.2	42.4	29.4	15.2	2.1	5.3	0.17	222.1
October	76.9	47.8	42.8	27.4	17.8	2.0	6.5	0.19	221.4
November	92.7	45.1	42.3	28.7	19.2	2.2	5.2	0.11	235.5
December	94.5	46.6	58.6	33.8	26.2	3.7	4.5	0.14	268.1
2009									
January**	81.7	27.2	31.0	25.4	16.6	1.7	5.3	22.64	211.4
February**	78.6	20.6	31.0	26.1	18.8	1.9	5.7	20.75	203.5
March**	50.5	21.0	24.1	24.1	12.7	2.0	4.1	22.40	161.0

Source : Ministry of Energy

* Sales from major oil marketing firms only

- data not available

+ Data from other Key firms not included

**Provisional

MT: Means Metric Tonnes

Table 14 (d): Weighted Average Retail Prices for Selected Fuel Products within Nairobi

PERIOD	KSh per litre			
	MOTOR GASOLINE PREMIUM	MOTOR GASOLINE REGULAR	LIGHT DIESEL OIL (GASOIL)	ILLUMINATING KEROSENE
Apr-08	95.96	92.63	85.62	71.27
May-08	96.87	95.15	87.91	71.74
Jun-08	102.34	98.74	95.70	78.87
Jul-08	106.10	101.52	100.21	85.43
Aug-08	108.20	103.32	103.10	88.49
Sep-08	104.56	101.02	101.48	88.07
Oct-08	100.36	98.16	97.73	85.56
Nov-08	94.83	93.27	86.94	82.61
Dec-08	83.53	77.07	72.19	67.47
Jan-09	84.47	78.08	72.63	64.44
Feb-09	76.79	76.59	71.23	62.21
Mar-09	74.04	73.52	70.13	58.12
Apr-09	77.62	79.79	70.11	60.25

Source : Kenya National Bureau of Statistics

Fig 11(a): Average Retail Prices of selected Petroleum Products

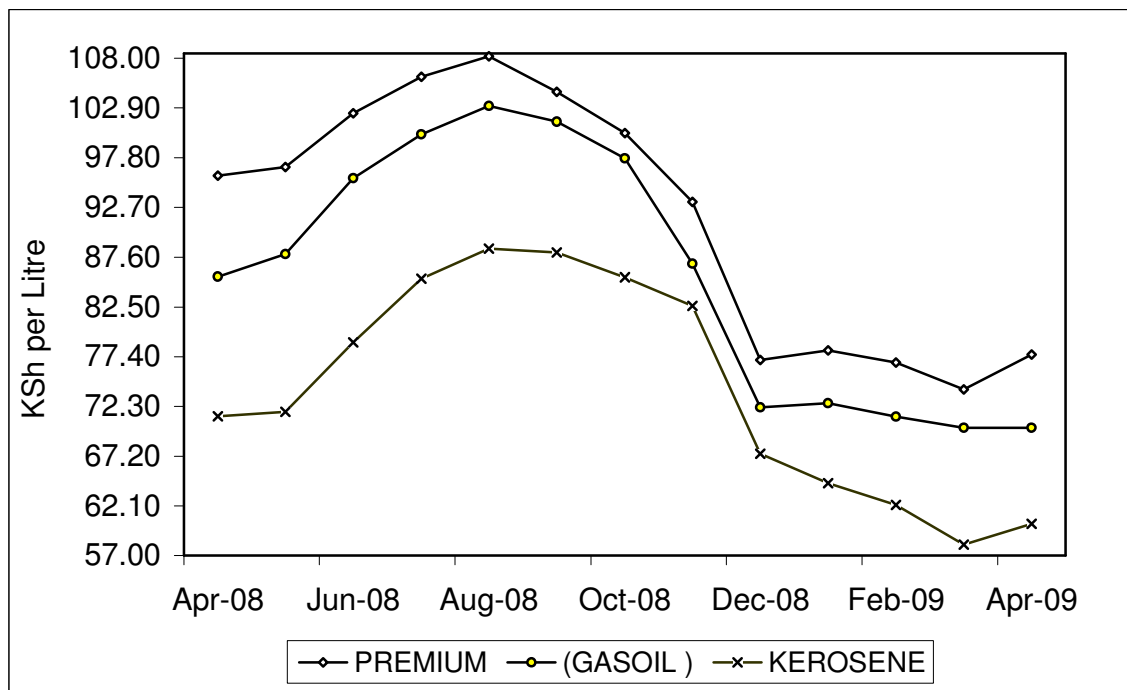


Table 14 (e): Weighted Average Retail Prices for Selected Fuels in Kenya

PERIOD	MOTOR GASOLINE PREMIUM (KSh Per Litre)	MOTOR GASOLINE REGULAR (KSh per Litre)	LIGHT DIESEL OIL, GASOIL (KSh per Litre)	ILLUMINATING KEROSENE (KSh per Litre)	L.P.G (KSh per 13Kg)	Charcoal (KSh per 4 Kg Tin)
Apr-08	94.32	92.71	84.49	68.81	1,785.46	34.91
May-08	98.60	94.96	88.51	74.30	1,797.90	35.50
Jun-08	100.43	98.73	93.18	75.45	1,810.07	35.84
Jul-08	103.30	102.45	97.68	80.95	1,802.58	35.73
Aug-08	105.90	104.18	100.90	84.95	1,807.43	35.95
Sep-08	106.85	103.89	100.77	84.52	1,816.06	36.59
Oct-08	102.12	101.09	98.09	82.61	1,827.09	36.95
Nov-08	98.12	96.07	90.62	81.11	1,827.09	37.45
Dec-08	86.16	83.61	77.54	71.10	1,845.46	37.56
Jan-09	84.52	81.73	75.57	68.00	1,681.74	39.72
Feb-09	81.69	80.60	73.94	65.94	1,705.09	40.03
Mar-09	80.64	79.41	72.59	63.26	1,675.75	39.50
Apr-09	79.79	77.62	70.11	60.25	1,633.86	43.02

Source : Kenya National Bureau of Statistics

Fig 11(b): Weighted Average Prices for LPG in Kenya

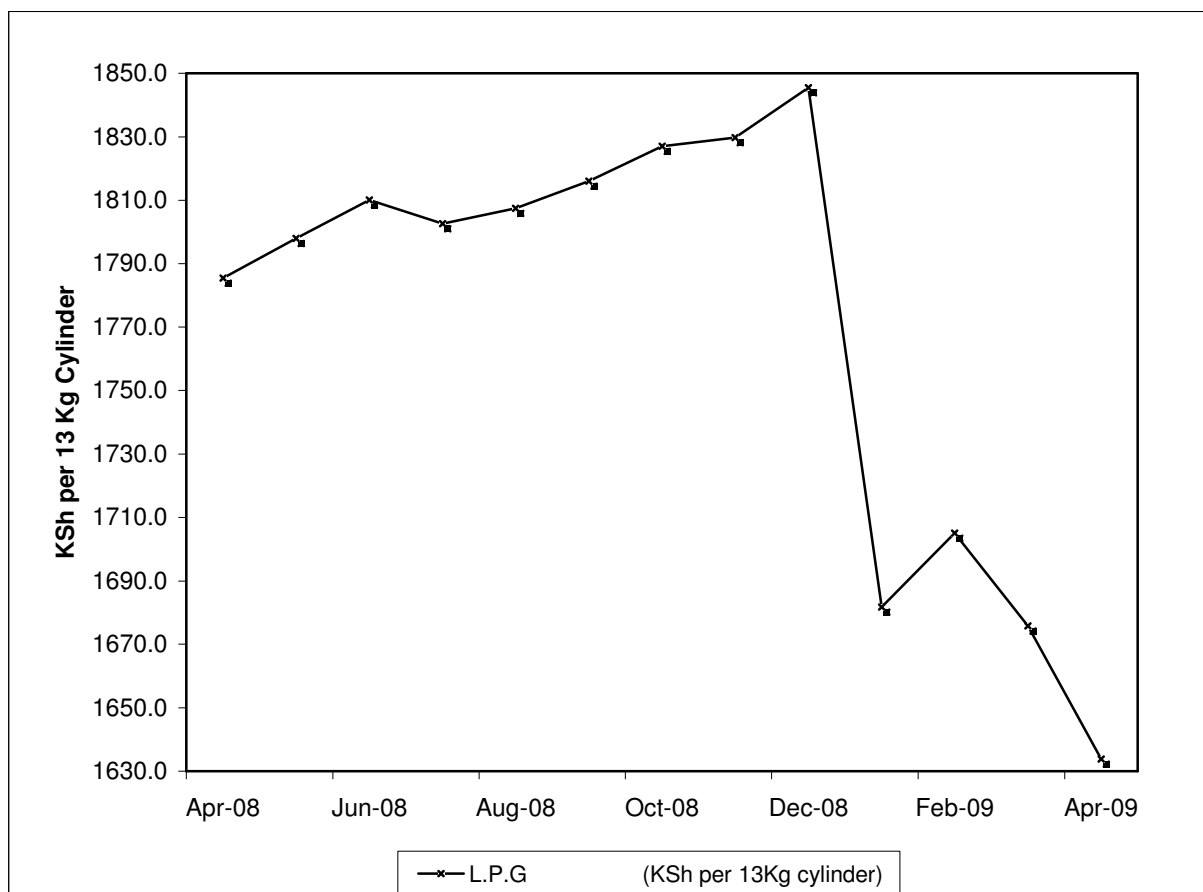


Table 14(f): Murban ADNOC Prices 2003-2008

Month/Year	US\$BBL					
	2004	2005	2006	2007	2008	2009*
January	31.05	42.10	62.15	54.85	92.25	48.85
February	30.90	44.00	60.95	58.75	95.10	44.95
March	33.15	50.95	60.85	62.10	102.20	47.55
April	33.80	52.55	67.50	67.60	109.35	45.85
May	37.05	49.80	68.50	68.40	125.75	60.15
June	35.95	55.45	68.85	69.70	134.00	
July	37.35	57.10	73.00	73.70	137.35	
August	41.55	60.95	72.70	71.75	117.50	
September	41.39	61.05	63.25	78.55	98.05	
October	42.80	58.00	59.35	81.80	69.25	
November	39.65	54.95	59.70	91.75	51.40	
December	38.50	56.90	62.05	90.60	42.10	

Source : Ministry of Energy

* **Provisional**

ADNOC : Abu Dhabi National Oil Corporation

PRICE : Abu Dhabi Free On Board (FOB)

US\$/ BBL: US Dollar per Barrel

Fig 12: Trend for Murban ADNOC Crude Oil Prices

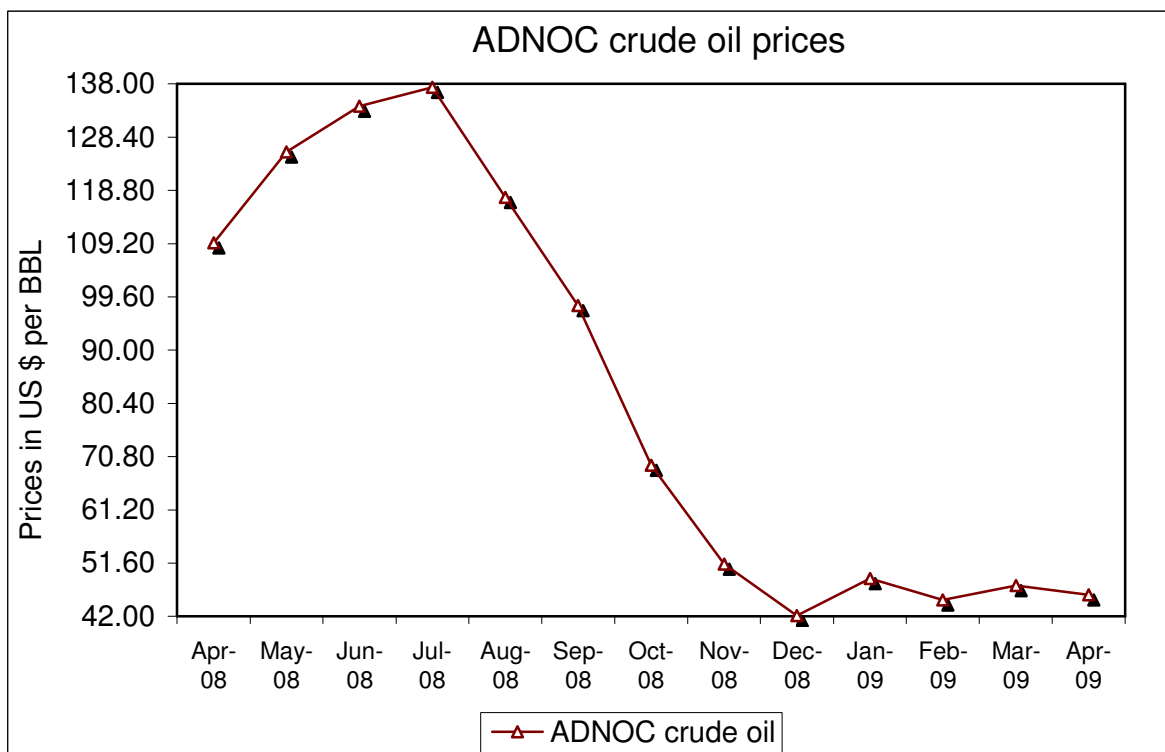


Table 15: Value of Building Plans Approved by Nairobi City Council (NCC)

KSh.'Million

MONTHS	ACTUAL			REAL**		
	RESIDENTIAL	NON RESIDENTIAL	AGGREGATE ACTUAL	RESIDENTIAL	NON RESIDENTIAL	REAL AGGREGATE
2008						
April	3,249.1	2,962.9	6,212.0	60.4	52.6	112.9
May	1,683.6	2,810.7	4,494.3	31.3	49.9	81.1
June	2,008.8	1,874.8	3,883.6	38.0	33.9	71.9
July	2,417.1	1,368.1	3,785.2	45.3	24.6	69.9
August	1,961.3	1,621.5	3,582.8	36.5	29.1	65.5
September	2,144.5	1,589.7	3,734.2	39.9	28.5	68.4
October	2,729.1	1,737.1	4,466.3	50.3	30.9	81.2
November	5,514.5	1,729.2	7,243.7	101.7	31.0	132.7
December	1,976.1	2,954.8	4,930.9	36.5	52.6	89.0
2009						
January	2,356.8	5,717.5	8,074.3	43.5	101.7	145.2
February	3,686.1	2,272.9	5,959.0	68.0	40.4	108.4
March	3,960.2	2,592.6	6,552.8	73.1	46.1	119.2

Source: Nairobi City Council

* Provisional

+ : NCC Approval committee did not meet to approve new plans

** Actual deflated by relevant construction cost indices (**Dec1972 =100**)

- data not available

Table 16(a): Domestic Production of Sugar

Month	Metric Tonnes							
	2002	2003	2004	2005	2006	2007	2008*	2009*
January	48,300	37,923	49,186	48,993	47,596	42,188	38,986	53,968
February	39,479	39,709	48,708	41,929	44,823	41,246	49,772	46,115
March	39,479	22,881	46,827	40,192	51,327	45,933	40,753	53,687
April	41,105	17,879	43,123	42,988	41,055	47,255	38,968	
May	18,744	34,954	37,583	40,869	39,849	45,427	50,865	
June	44,581	39,144	28,069	29,076	34,985	36,870	49,300	
July	50,184	31,878	36,824	27,995	30,985	37,496	40,805	
August	45,895	40,106	41,622	41,585	47,002	44,898	21,130	
September	48,752	48,302	45,438	39,003	35,173	44,396	40,567	
October	44,573	48,939	45,530	45,810	35,102	48,849	47,244	
November	35,609	43,037	45,107	42,493	34,265	44,155	46,239	
December	37,923	43,768	48,738	48,069	33,509	41,691	47,262	
Total	494,624	448,520	516,755	489,002	475,671	520,404	511,891	

*Provisional

** Revised based on Kenya Sugar Board figures.

Source: Kenya Sugar Authority

TABLE 16(b): PRODUCTION OF SOFT DRINKS

Month	Metric Tonnes							
	2002	2003	2004	2005	2006*	2007*	2008*	2009*
January	38,553	51,676	17,162	22,025	32,548	28,835	25,595	38,763
February	18,547	19,540	12,692	22,895	26,470	27,484	23,744	27,718
March	17,558	17,353	17,650	27,395	27,538	31,120	31,358	
April	14,096	15,970	10,596	18,196	19,542	26,411	23,257	
May	11,698	13,514	12,509	17,308	20,406	26,148	24,834	
June	13,917	15,109	19,776	18,513	22,682	22,852	21,903	
July	6,947	6,266	13,828	19,044	17,568	20,508	20,769	
August	10,486	10,784	12,722	15,367	20,095	21,402	22,418	
September	7,842	6,709	18,768	19,950	20,127	25,899	29,550	
October	9,980	9,102	13,863	21,965	23,774	40,067	26,953	
November	12,354	11,977	11,813	26,881	20,689	27,177	27,564	
December	20,521	22,989	14,542	27,485	27,968	30,329	32,322	
Total	182,499	200,989	175,921	257,024	279,407	328,231	310,267	

Source : Kenya National Bureau of Statistics

- data not available

Table 16(c): Production of Assembled Vehicles

Month	Numbers			
	2005	2006*	2007*	2008*
January	322	360	450	468
February	641	411	516	592
March	579	461	565	388
April	553	436	532	601
May	489	486	574	575
June	448	399	481	487
July	507	439	456	468
August	439	480	589	440
September	423	477	566	488
October	341	447	718	503
November	322	592	658	435
December	335	392	437	302
Total	5,399	5,380	6,542	5,747

*Provisional

TABLE 16(d): PRODUCTION OF GALVANISED SHEETS

Month	Metric Tonnes			
	2005	2006	2007	2008
January	12,203	13,520	13,515	16,240
February	11,491	12,765	15,365	16,912
March	10,679	12,736	16,920	15,498
April	10,439	13,138	15,855	15,396
May	15,952	13,754	14,816	15,741
June	15,085	13,946	16,404	15,528
July	13,596	15,695	15,674	16,935
August	14,806	15,180	15,921	17,166
September	17,536	13,927	15,877	17,255
October	15,837	13,619	16,611	15,755
November	15,544	15,552	15,372	12,418
December	15,950	14,914	15,930	14,477
Total	169,118	168,746	188,260	189,321

Source : Kenya National Bureau of Statistics

- data not available

*Provisional

Table 16(e): Cement production and Consumption

MONTHS	Metric Tonnes					
	2007*		2008*		2009*	
	PRODUCTION	CONSUMPTION	PRODUCTION	CONSUMPTION	PRODUCTION	CONSUMPTION
January	196,464	135,327	178,681	133,429	249,968	200,840
February	178,706	130,918	186,508	152,133	248,721	199,701
March	215,477	164,619	213,740	175,922	269,867	191,989
April	198,779	162,976	211,728	173,832	263,871	200,478
May	214,333	178,679	254,809	200,639		
June	198,002	163,622	244,128	194,627		
July	236,597	190,706	267,072	203,298		
August	235,786	191,609	266,905	214,606		
September	235,088	191,373	258,139	207,702		
October	206,289	191,244	260,258	183,199		
November	221,484	199,745	234,080	191,603		
December	208,656	160,582	252,751	174,799		
TOTAL	2,545,660	2,061,400	2,828,799	2,205,789		

- data not available

Source: Kenya National Bureau of Statistics

*Provisional

-: data not available

Table 16(f): Milk Intakes in the Formal Milk Sector

litres				
Month	2006	2007	2008	2009
Jan	28,993,210	35,997,997	28,596,999	35,816,607
Feb	25,445,275	37,508,095	26,527,462	29,467,592
Mar	21,142,657	34,608,329	26,885,445	26,243,000
Apr	23,285,252	33,286,207	28,616,588	
May	29,773,451	30,038,560	35,017,737	
Jun	34,032,057	33,092,547	34,723,007	
Jul	33,304,057	33,147,783	32,838,238	
Aug	32,658,519	36,022,269	33,643,233	
Sept	32,159,974	35,186,438	35,535,725	
Oct	32,236,110	37,988,733	35,530,367	
Nov	33,925,921	39,840,842	39,359,859	
Dec	33,192,254	36,393,069	41,236,728	
Total	360,148,736	423,110,869	398,511,387	

Source: Kenya Dairy Board

FIG 13: Milk Intake in the Formal Sector

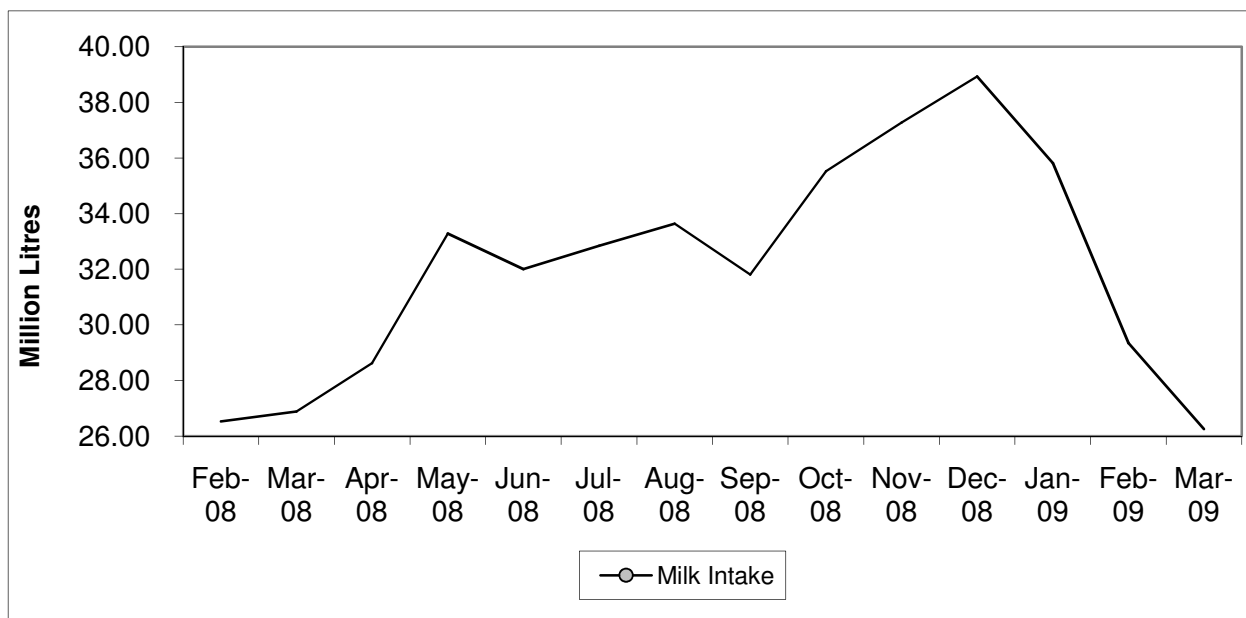


Table 17: Visitor Arrivals* through Jomo Kenyatta International Airport (J.K.I.A) and Moi International Airport (M.I.A)

MONTH	AIRPORT		Numbers
	JKIA	MIA	Visitors to Kenya
2008			
March	40,770	5,106	45,876
April	40,686	2,063	42,749
May	39,812	2,760	42,572
June	47,224	3,059	50,283
July	64,890	9,311	74,201
August	62,890	13,081	75,971
September	56,026	11,136	67,162
October	58,504	11,260	69,764
November	50,224	15,369	65,593
December	72,657	22,398	95,055
Total 2008	610,378	111,188	721,566
January	54,167	24,315	78,482
February	54,503	24,542	79,045
March	52,320	18,866	71,186
April	52,458	7,026	59,484

* Visitors arrivals exclude Kenyans
 **Provisional

FIG 14: VISITORS ARRIVING IN KENYA THROUGH THE MAIN AIRPORTS

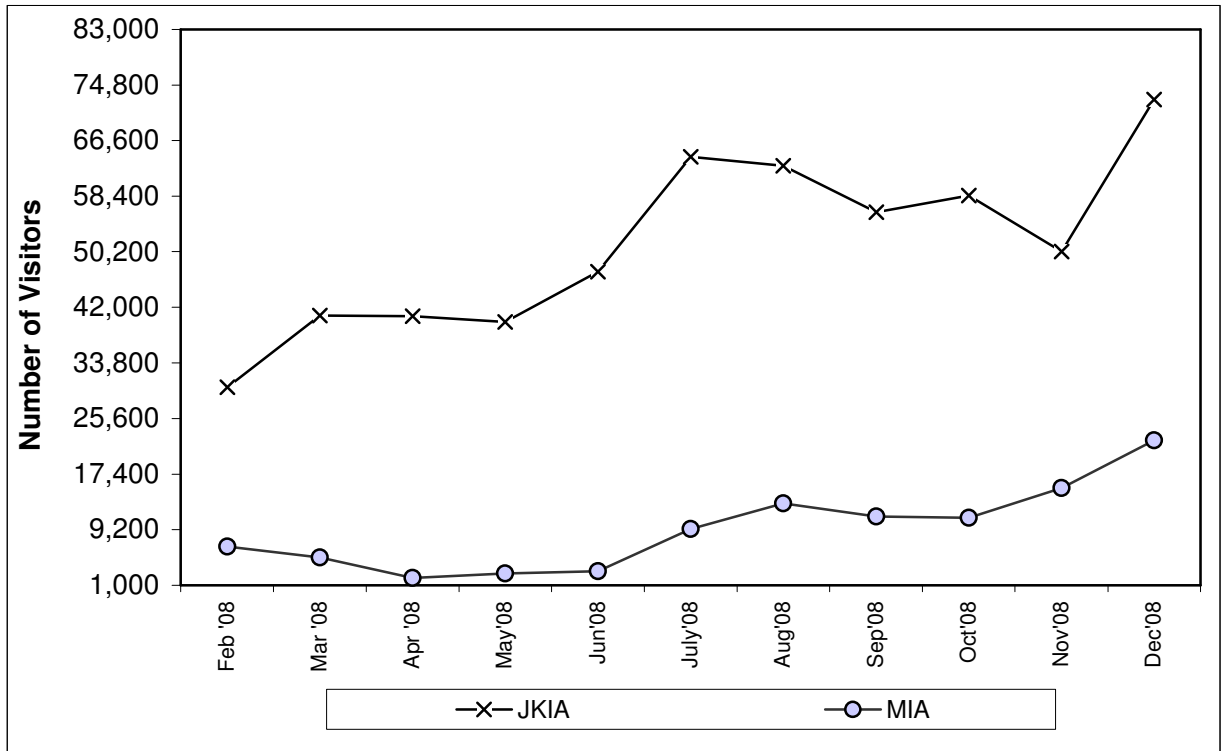


TABLE (18A): JOMO KENYATTA INT. AIRPORT INTERNATIONAL FLIGHTS ONLY- EMBARKED PASSENGERS BY PORT OF DESTINATION.

PORTS.	2007	2008											2009		
	TOTAL	Mar	Apr	May	June	July	Aug	Sep	Oct	Nov	Dec	TOTAL	Jan	Feb	Mar
ADDIS ABABA (ADD)	45,260	635	740	620	4,320	1,081	3,929	728	3,297	3,739	2,277	26,060	3759	3975	915
CAIRO (CAI)	26,195	1,860	2045	1,903	2,505	3,719	2,941	2,897	2,812	2,628	3,304	28,883	902	1367	2677
DAR ES SALAAM (DAR)	82,939	6,300	7018	6,709	2,684	7,073	7,353	7,244	5,555	6,655	3,704	71,240	5278	5667	5870
ENTEBBE (EBB)	119,541	10,505	9631	9,647	11,051	10,839	11,005	10,456	10,401	10,802	9,873	122,120	9143	8967	9630
HARARE (HRE)	16,880	1,556	1357	1,334	1,186	918	1,352	1,234	1,218	1,475	1,996	15,997	1223	1148	1436
JOHANNESBURG (JNB)	116,178	6,168	5860	8,118	8,741	6,237	10,646	6,743	10,823	14,430	12,135	105,218	8672	6645	6384
TOTAL AFRICA	406,993	27,024	26,651	28,331	30,487	29,867	37,226	29,302	34,106	39,729	33,289	369,518	28,977	27,769	26,912
BOMBAY (BOM)	73,691	662	5271	4,282	6,253	6,442	6,161	4,486	9,680	1,296	7,284	57,657	1019	4821	4476
DUBAI (DXB)	122,115	15,580	15383	15,540	14,870	21,141	23,848	17,050	7,376	16,917	16,022	183,322	13866	5729	13116
JEDAH (JED)	8,130	264	492	507	463	0	2,432	1,429	0	472	0	6,315	0	256	264
KARACHI (KHI)	0	0	0	0	0	0	0	0	0	0	0	0	0	0	0
MUSCAT (MCT)	0	0	0	0	0	0	0	0	0	0	0	0	0	0	0
OTHERS															
TOTAL ASIA	203,936	16,506	21,146	20,329	21,586	27,583	32,441	22,965	17,056	18,685	23,306	247,294	14,885	10,806	17,856
AMSTERDAM (AMS)	176,803	2,703	3433	7,771	13,085	6,414	19,163	17,641	16,243	15,802	3,883	112,445	3950	2357	3832
BRUSSELS (BRU)	29,563	0	0	3,353	3,282	2,403	3,831	1,830	1,825	2,092	2,437	23,401	1345	1003	0
LONDON (LON)	195,780	10,247	6786	11,093	17,709	12,957	23,915	20,474	18,237	15,037	16,001	173,710	14002	7252	11057
PARIS-(CDG) & (PAR)	19,034	-	0	0	0	3,885	4,047	2,657	1,877	1,967	2,009	18,255	1248	565	2299
ROME (ROM) ^z	-	-	0	0	0	0	0	0	0	0	0	-	0	0	0
ZURICH (ZRH)	27,288	0	0	3,669	4,064	2,552	2,152	0	2,408	2,054	2,137	26,289	3695	3558	0
TOTAL EUROPE	448,468	12,950	10,219	25,886	38,140	28,211	53,108	42,602	40,590	36,952	26,467	354,100	24,240	14,735	17,188
TOTAL OTHERS**	428,639	69,894	33061	37,644	37,102	45,355	52,666	44,102	40,382	42,050	32,073	497,902	28960	32450	40715
GRAND TOTAL	1,488,177	126,374	91,077	112,190	127,315	131,016	175,441	138,971	132,134	137,416	115,135	1,468,814	97,062	85,760	102,671

Source : Kenya National Bureau of Statistics

- no passengers embarked

* Provisional

** Ports not listed

^z All planes flying to Italy

FIG 15: J.K.I.A. PASSENGERS BY REGION OF DESTINATION

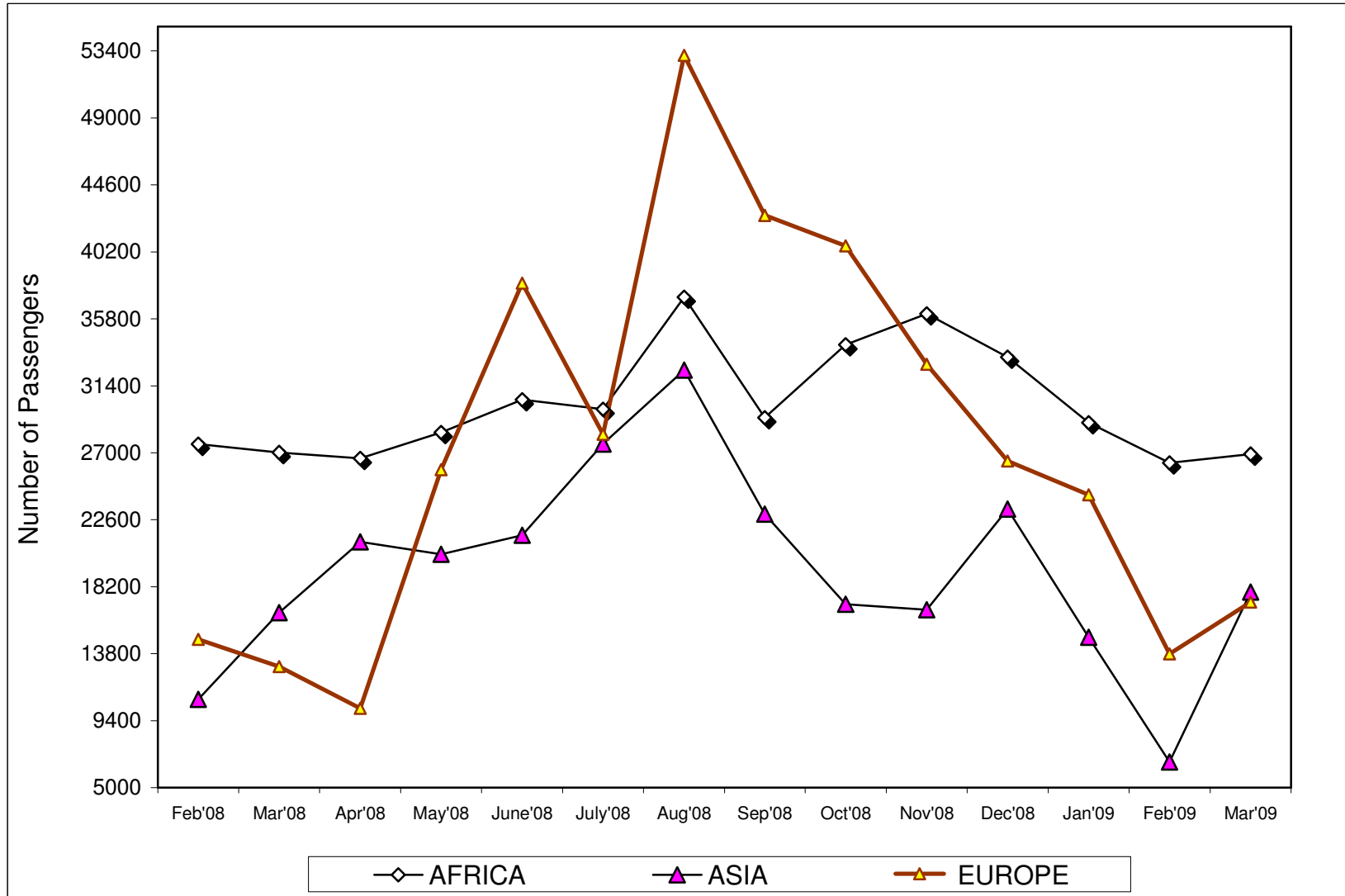


TABLE (18B): JOMO KENYATTA INT. AIRPORT INTERNATIONAL FLIGHTS ONLY- LANDED PASSENGERS BY PORT OF DESTINATION.

PORTS	2007	2008										2009	2009	2009	
	TOTAL	Mar	Apr	May	June	July	Aug	Sep	Oct	Nov	Dec	TOTAL	Jan	Feb	Mar
ADDIS ABABA (ADD)	42,261	891	950	1,114	3,041	649	3,761	1,238	4,493	4,212	1,204	25,643	858	3,232	1,308
CAIRO (CAI)	23,824	1,592	1,874	1,840	2,369	3,888	6,478	2,390	3,853	2,276	4,426	33,372	1,184	1,202	2,239
DAR ES SALAAM (DAR)	85,689	6,334	6,547	6,277	4,881	7,963	7,909	4,633	6,176	7,129	6,714	76,886	5,553	6,670	6,275
ENTEBBE (EBB)	118,612	10,461	9,304	9,430	10,774	11,035	10,881	10,372	10,747	10,555	10,082	120,988	8,756	8,591	9,565
HARARE (HRE)	15,555	1,052	1,043	893	1,060	1,172	1,195	1,170	1,109	1,120	1,325	13,310	1,155	1,016	1,233
JOHANNESBURG (JNB)	107,676	5,729	6,306	8,002	9,171	7,154	10,042	6,814	10,408	10,840	16,038	103,179	7,148	5,527	6,077
TOTAL AFRICA	393,617	26,059	26,024	27,556	31,296	31,861	40,266	26,617	36,786	36,132	39,789	373,378	24,654	26,238	26,697
BOMBAY (BOM)	70,627	1,097	6,113	7,162	6,700	6,453	6,150	5,183	4,852	755	7,355	54,557	1,616	1,121	4,150
DUBAI (DXB)	118,377	14,699	14,226	15,024	15,587	19,616	20,475	18,581	6,064	15,746	19,349	178,977	14,215	5,395	12,276
JEDAH (JED)	6,906	262	323	452	706	0	1,546	250	0	195	0	3,899	0	165	452
KARACHI (KHI)	0	0	0	0	0	0	0	0	0	0	0	0	0	0	0
MUSCAT (MCT)	-	0	0	0	0	0	0	0	0	0	0	-	0	0	0
TOTAL ASIA	195,910	16,058	20,662	22,638	22,993	26,069	28,171	24,014	10,916	16,696	26,704	237,433	15,831	6,681	16,878
AMSTERDAM (AMS)	183,515	5,994	4,337	7,929	7,297	5,595	16,997	13,121	17,022	14,772	7,284	110,997	5,355	5,294	5,441
BRUSSELS (BRU)	19,720	0	0	2,350	5,751	1,828	1,412	0	1,985	1,158	309	16,160	767	600	0
LONDON (LON)	189,493	9,284	5,787	11,985	20,902	10,953	13,890	18,100	20,682	13,118	14,865	154,715	8,949	6,201	9,768
PARIS-(CDG)&(PAR)	17,293	0	0	0	0	2,892	2,789	1,672	2,268	1,775	2,905	15,524	639	584	1,870
ROME (ROM) Z	-	0	0	0	0	0	0	1,813	0	0	0	-	0	0	0
ZURICH (ZRH)	25,579	0	0	1,679	2,097	5,104	2,246	0	0	1,996	4,065	19,807	1,521	1,099	0
TOTAL(EUROPE)	435,600	15,278	10,124	23,943	36,047	26,372	37,334	34,706	41,957	32,819	29,428	317,203	17,231	13,778	17,079
OTHERS(TOTAL) **	445,935	72,017	54,919	56,779	42,088	48,881	50,659	41,906	45,431	39,842	38,499	547,024	26,562	30,350	35,424
GRAND TOTAL	1,471,062	129,412	111,729	130,916	132,424	133,183	156,430	127,243	135,090	125,489	134,420	1,475,038	84,278	77,047	96,078

Source : Kenya National Bureau of Statistics

- no passengers landed

* Provisional

** Ports not listed

z Includes all planes from Italy

FIG 16: J.K.I.A. PASSENGERS BY REGION OF ORIGIN

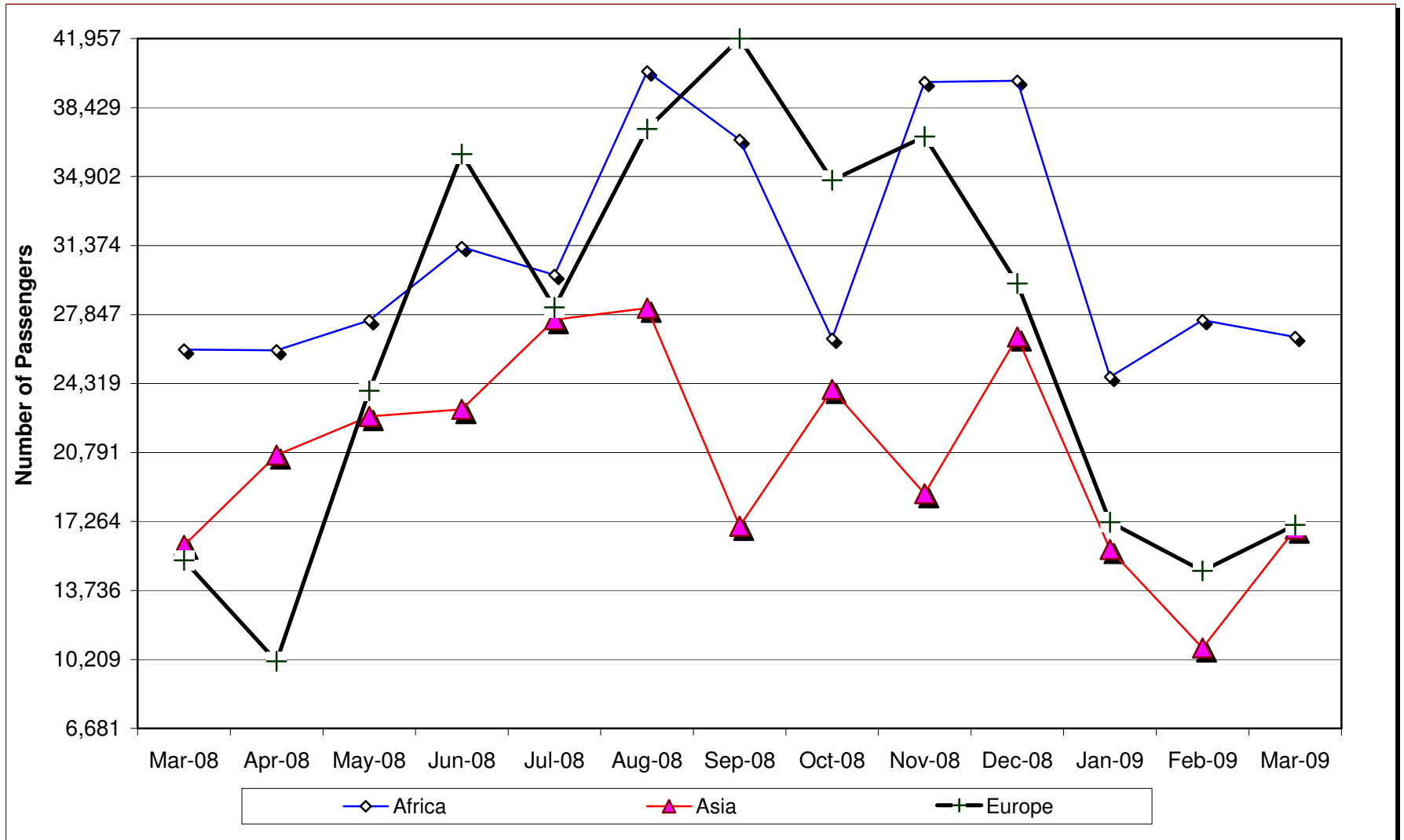


Table 18 C: New Vehicle Registration

<i>Body Type/Month</i>	2008												2009	
	<i>Feb</i>	<i>Mar</i>	<i>Apr</i>	<i>May</i>	<i>June</i>	<i>July</i>	<i>Aug</i>	<i>Sep</i>	<i>Oct</i>	<i>Nov</i>	<i>Dec</i>	<i>Cumulative 2008</i>	<i>Jan</i>	<i>Feb</i>
Saloons	1,065	830	1,272	1,311	1,230	1,823	2,686	1,630	1,603	1,527	1,833	18,686	1,497	708
St,Wagon	1,553	1,299	1,839	2,148	1,890	2,799	2,689	2,580	2,232	2,358	2,607	26,696	1,997	1,182
Vans,P/Ups,etc	706	566	877	413	405	555	408	479	680	587	757	7,034	613	621
M/Buses	452	435	559	390	314	509	564	426	373	370	387	5,206	332	366
Buses	61	82	97	128	73	126	129	104	108	104	148	1,243	65	70
Lorries	462	541	658	547	593	585	680	682	542	330	662	6,691	534	399
Trailers	134	184	182	168	170	193	170	88	166	247	221	2,100	208	281
Motors Cycles	1,982	1,904	3,840	4,390	3,859	4,530	4,605	5,964	6,680	6,471	5,447	51,412	7,688	8,193
3 Whellers	48	75	30	56	57	79	67	45	80	60	44	704	42	61
Wheeled tractors	121	85	133	101	88	90	67	143	136	87	124	1,262	85	139
Others	45	43	52	47	59	58	43	69	65	253	36	797	41	361
TOTAL	6,629	6,044	9,539	9,699	8,738	11,347	12,108	12,210	12,665	12,394	12,266	121,831	13,102	12,381

Source : Kenya National Bureau of Statistics

* Provisional

- Not specified