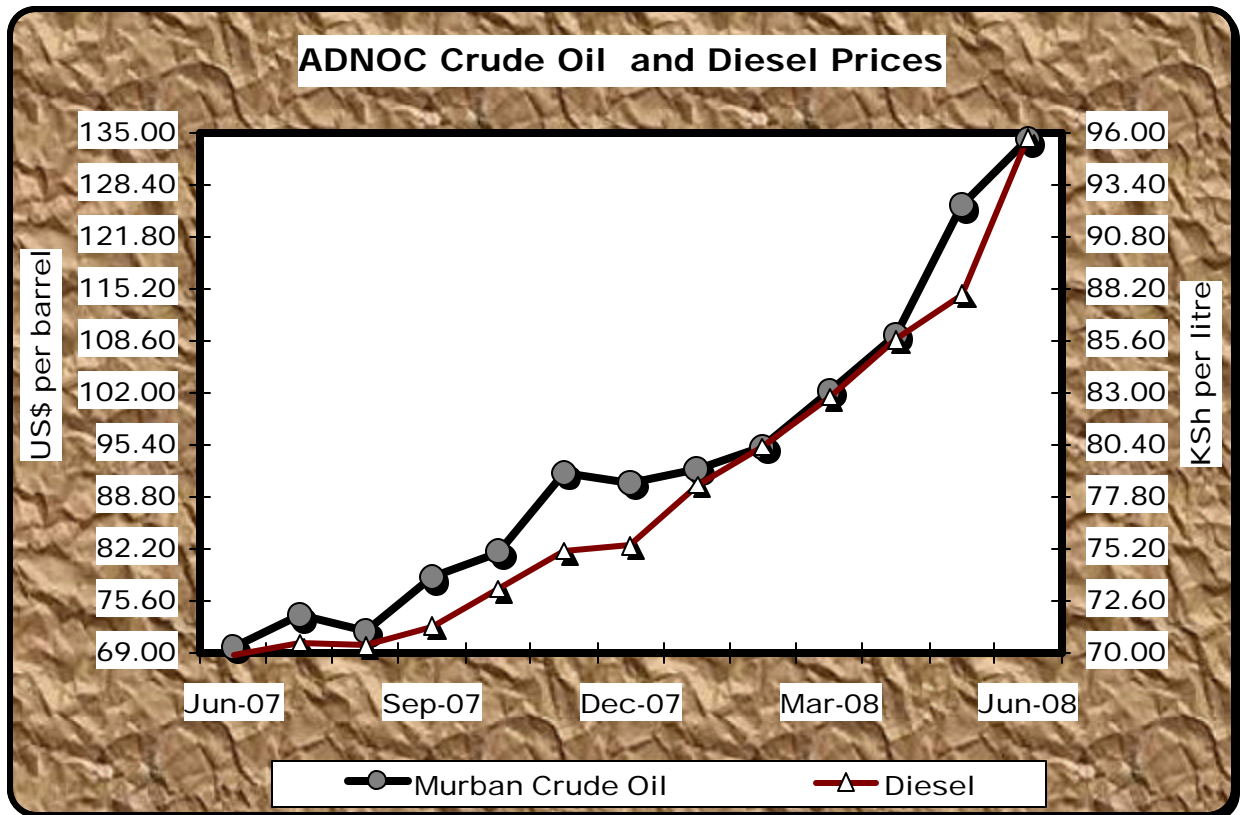




# LEADING ECONOMIC INDICATORS



KENYA NATIONAL BUREAU OF STATISTICS

P.O. Box 30266- 00100 Nairobi

Tel:317586/88,317612/22 Fax: 315977

Website: [www.Cbs.go.ke](http://www.Cbs.go.ke)

email: [director@cbs.go.ke](mailto:director@cbs.go.ke)

## MAY 2008

## TABLE OF CONTENTS

Key highlights on Leading Economic Indicators .....	4
<b>Overview</b> .....	4
<b>Table 1: Kenya Consumer Price Indices and Inflation Rate</b> .....	8

### MACRO-ECONOMIC INDICATORS

TABLE 2: MEAN FOREIGN EXCHANGE RATES OF KENYA SHILLINGS AGAINST SELECTED MAJOR CURRENCIES AT THE END OF THE MONTH .....	10
Table 3: Interest Rates (%) .....	12
TABLE 4: CAPITAL MARKETS - NAIROBI STOCK EXCHANGE .....	13
TABLE 5 (a): MONEY SUPPLY .....	14
TABLE 5b: FOREIGN EXCHANGE RESERVES .....	16

### AGRICULTURE

TABLE 6: COFFEE SALES AND PRICES .....	17
TABLE 7: TEA PRODUCTION AND PRICES .....	18
Table 8(a): AVERAGE MONTHLY RETAIL PRICES FOR DRY MAIZE IN THE YEAR- 2007 19	19
Table 8(b): Average Monthly Retail Prices for Dry Maize in the Year 2008 .....	20
Table 8(c): Average Monthly Retail Prices for Dry Beans Prices (2007) .....	21
Table 8(d): Average Monthly Retail Prices for Dry Beans Prices (2008) .....	22

### TRADE

Table 9: Export of Coffee, Tea and Horticultural Produce .....	23
Table 10: Monthly Exports of Horticultural Products .....	24
Table 11: Kenya's External Trade, Apr 2007 - May 2008 .....	25
Table 12: Major Destinations of Domestic Exports, Jan 2007 - May 2008 .....	26
Table 13: Major Origins of Imports, Apr 2007-May 2008 .....	27
Table 12 (a): Domestic Exports by Broad Economic Category .....	28
Table 13 (a): Imports by Broad Economic Category .....	29

### ENERGY

Table 14(a): Local Electricity Generation by Source .....	30
Table 14(b): Generation and Consumption of Electricity .....	31
Table 14 (c): Consumption of Petroleum Fuels .....	32
Table 14 (d): Weighted Average Retail Prices for Selected Fuel Products within Nairobi 33	33
Table 14 (e): Weighted Average Retail Prices for Selected Fuels in Kenya .....	34
Table 14(f): Murban ADNOC Prices 2003-2008 .....	34

## BUILDING AND CONSTRUCTION

Table 15:	Value of Building Plans Approved by Nairobi City Council (NCC) --	36
-----------	---	----

## SELECTED MANUFACTURED PRODUCTS

Table 16(a):	Domestic Production of Sugar -----	37
Table 16(c):	Production of Assembled Vehicles-----	38
Table 16(e):	Cement production and Consumption -----	39
Table 16F:	Milk Intakes in the Formal Milk Sector. -----	40

## TOURISM

Table 17:	Visitor Arrivals* through Jomo Kenyatta International Airport (J.K.I.A) and Moi International Airport (M.I.A) -----	41
-----------	--	----

## TRANSPORT

TABLE (18A):	JOMO KENYATTA INT. AIRPORT INTERNATIONAL FLIGHTS ONLY- EMBARKED PASSENGERS BY PORT OF DESTINATION.-----	42
TABLE (18B):	JOMO KENYATTA INT. AIRPORT INTERNATIONAL FLIGHTS ONLY- LANDED PASSENGERS BY PORT OF DESTINATION.-----	44
Table 18 C:	New Vehicle Registration-----	46

## CHARTS

FIG. 1:	OVERALL MONTH ON MONTH AND UNDERLYING INFLATION RATES-----	9
FIG 2:	END OF MONTH MEAN EXCHANGE RATE OF KENYA SHILLINGS AGAINST MAJOR SELECTED CURRENCIES -----	11
FIG 3:	INTEREST RATES -----	12
FIG 4:	NAIROBI STOCK EXCHANGE SHARES INDEX -----	13
FIG 5:	MONEY SUPPLY (M3) -----	15
FIG 6:	FOREIGN EXCHANGE RESERVES -----	16
FIG.7:	COFFEE SALES at the NAIROBI COFFEE EXCHANGE -----	17
FIG.8:	TEA PRODUCTION -----	18
Fig 9:	Electricity Generation by Source-----	30
Fig 10:	Electricity Generation Consumption and Power Losses -----	31
Fig 11(a):	Average Retail Prices of selected Petroleum Products -----	33
Fig 11(b):	Weighted Average Prices for LPG in Kenya-----	34
Fig 12:	Trend for Murban ADNOC Crude Oil Prices -----	35
FIG 13:	Milk Intake in the Informal Sector-----	40
FIG 14:	VISITORS ARRIVING IN KENYA THROUGH THE MAIN AIRPORTS -----	41
FIG 15:	J.K.I.A. PASSENGERS BY REGION OF DESTINATION -----	43
FIG 16:	J.K.I.A. PASSENGERS BY REGION OF ORIGIN-----	45

## **Key highlights on Leading Economic Indicators**

### **Overview**

The monthly Leading Economic Indicators Publication for May 2008 highlights trends in Consumer Price Indices (CPI) and inflation, interest rates, exchange rates, international trade, agriculture, energy, manufacturing, building and construction, tourism and transport.

### **Macroeconomic Indicators and Financial Intermediation**

Consumer Price Index (CPI) decreased by 0.36 per cent from 291.79 points in May 2008 to 290.75 points in June 2008. Month-on-month overall inflation rate declined from 31.5 per cent in May 2008 to 29.3 per cent in June 2008. However, month-on-month underlying inflation rate which excludes food items from the CPI basket increased from 10.5 per cent in May 2008 to 11.2 per cent in June 2008.

The Kenyan Shilling strengthened against all major international and regional currencies at the end of May 2008 except for the Sterling Pound and the Southern African Rand. The Shilling appreciated marginally against the US Dollar, the Euro and the Japanese Yen to trade at an average cost of KSh 62.029, KSh 96.160 and KSh 58.855 in May 2008 up from an average of KSh 62.136, KSh 97.007 and KSh 60.010 recorded at the end of April 2008, respectively. Also, the Shilling appreciated against the Tanzanian and the Ugandan Shillings to trade at KSh 19.322 and KSh 26.278 at the end of May 2008, respectively. However, during the same period, the Shilling weakened against the Sterling Pound and the Southern African Rand to trade at KSh 1212.574 and KSh 8.226, respectively.

The benchmark 91-day Treasury bill rose marginally by 0.41 percentage points from 7.35 per cent in April 2008 to stand at 7.76 per cent in May 2008. The weighted average lending rate offered by Commercial banks for loans and advances rose from 13.91 per cent in April 2008 to 14.01 per cent in May 2008. Savings rate offered by commercial banks remained constant at 1.71 per cent during the period under review.

The Nairobi Stock Exchange share index (NSE 20) declined marginally in May 2008 by 3.0 per cent from 5,336.0 points in April 2008 to 5,175.8 points. Total value of shares traded increased by 21.3 per cent from KSh 5.6 billion in April 2008 to KSh 6.8 billion in May 2008. Total number of shares traded also increased by 18.5 per cent from 141.8 million shares to 168.0 million shares over the same period.

Broad money supply (M3) contracted marginally by 1.1 per cent from KSh 822.2 billion in April 2008 to KSh 812.8 billion in May 2008. Money and quasi-money (M2) also contracted by 3.6 per cent from KSh 710.1 billion in April 2008 to KSh 684.8 billion in May 2008.

Gross Foreign Exchange Reserves expanded by 5.2 per cent from KSh 311.6 billion in April 2008 to KSh 327.7 billion in May 2008 while Net Foreign Exchange Reserves expanded by 6.4 per cent from KSh 263.2 billion to KSh 280.2 billion over the same period.

## **SECTORAL PERFORMANCES**

### **a). Agriculture**

Quantity of coffee auctioned at the Nairobi Coffee Exchange stood at 6,374 MT in April 2008 compared to 6,324 MT in April 2007. The average auction price was KSh 169.14 per kilogram in April 2008 compared to KSh 182.91 per kilogram in April 2007.

Quantity of processed tea increased by 32.8 per cent from 27,415 MT in April 2008 to 36,402 MT in May 2008 while the average auction price declined from KSh 143.67 per kilogram to KSh 140.85 per kilogram over the same period.

Average price for dry maize rose from KSh 19.85 per kilogram in March 2008 to KSh 21.14 per kilogram in April 2008 while average price for dry beans rose from KSh 56.98 per Kilogram to KSh 62.63 per kilogram over the same period with Burma and Turbo markets reporting the highest prices for maize and beans, respectively.

### **b). International Trade**

Quantity of coffee exported increased by 4.5 per cent from 4,611.3 MT in April 2008 to 4,820.5 MT in May 2008 while its export value rose marginally by 1.8 per cent from KSh 1,107.7 million to KSh 1,128.1 million over the same period.

Quantity of tea exported declined significantly by 25.1 per cent from 40,724.4 MT in April 2008 to 30,518.6 MT in May 2008 while its export value declined by 17.2 per cent from KSh 5,464.0 million to KSh 4,525.4 million over the same period.

Quantity of horticultural produce exported increased by 16.1 per cent from 90,304.7 MT in the first half of 2007 to 104,835.6 MT in same half of 2008 while export value of horticultural produce increased by 4.4 per cent from KSh 34.0 billion to KSh 35.5 billion over the same period. The increase in quantity and value of horticultural produce exported can be attributed to increases in quantities and values of cut flowers and vegetables during the first half of 2008.

Volume of trade declined marginally by KSh 1.4 billion from KSh 84.0 billion in April 2008 to KSh 82.6 billion in May 2008 due to a decline in total exports by 11.8 per cent from KSh 29.2 billion in April 2008 to KSh 25.7 billion in May 2008. Total imports rose by 3.8 per cent from KSh 54.8 billion to KSh 56.9 billion over the same period.

Domestic exports by Broad Economic Category (BEC) indicate that food and beverages, consumer goods not elsewhere specified and non-food industrial supplies were the main export categories in May 2008. Food and beverages, consumer goods not elsewhere specified and non-food industrial supplies had a share contribution of 41.94, 27.23 and 26.17 per cent, respectively, in total export in May 2008. All the other economic categories recorded less than 10 per cent shares in total export.

Imports by Broad Economic Category (BEC) indicate that import shares of investment and capital goods increased in May 2008. Share of Fuel and lubricants, machinery and other equipments, and transport equipments went up by 3.05, 1.56 and 0.7 percentage points to 31.72, 15.53 and 12.7 per cent, respectively, in May 2008. Share of non-food industrial supplies declined from 31.84 per cent in April 2008 to 27.84 per cent in May 2008. Other contributors to the import bill by main categories in May 2008 included food and beverages, and consumer goods not elsewhere specified with shares of 4.77 and 7.13 per cent, respectively.

### **c). Energy**

Total domestic electricity generation declined by 7.2 per cent from 3,087.8 million KWh in the first half of 2007 to 2,866.5 million KWh in same half of 2008. The share of hydro generation stood at 58.6 per cent in the first half of 2008 up from 57.5 per cent in first half of 2007. Share of geothermal and thermal generation stood at 17.9 and 23.5 per cent, respectively. Total domestic consumption of electricity rose by 4.7 per cent from 2,510.5 million KWh in the first half of 2007 to 2,627.5 million KWh in same half of 2008. Power losses declined from 540.1 million KWh to 508.7 million KWh over the same period.

Exports of electricity to Uganda declined by 26.2 per cent from 45.5 million KWh in the first half of 2007 to 33.6 million KWh in same half of 2008. Total imports of electricity from Uganda and Tanzania increased from 8.2 million KWh to 11.4 million KWh over the same period.

Total consumption of petroleum products declined by 11.9 per cent from 755.3 thousand MT in the first quarter of 2007 to 665.5 thousand MT in the same quarter of 2008.

In the domestic market, average retail prices for motor gasoline, light diesel oil and illuminating kerosene increased further in April 2008 with the pump prices reaching the KSh 100 per litre mark. Pump prices for motor gasoline, light diesel oil and illuminating kerosene were retailing at an average of KSh 100.43 per

litre, KSh 93.18 per litre and KSh 75.45 per litre in June 2008 compared to KSh 79.45 per litre, KSh 68.21 per litre and KSh 57.21 per litre in June 2007, respectively. In Nairobi, the price of motor gasoline and light diesel were KSh 102.34 and KSh 95.70 per litre, respectively, in June 2008. The price for LPG rose marginally from KSh 1,785.46 per 13 Kg in April 2008 to KSh 1,797.90 per 13 Kg in May 2008.

In the international market, the price of Murban crude oil rose by 6.6 per cent from US Dollars 125.75 per barrel in May 2008 to US Dollars 134.00 per barrel in June 2008.

**d). Manufacturing and, building and construction**

Domestic production of sugar increased significantly by 30.5 per cent from 39,968 MT in April 2008 to 50,865 MT in May 2008 showing economic upturn after the dissipating of post elections effects while production of soft drinks declined by 12.4 per cent from 87,439 MT in the first quarter of 2007 to 76,618 MT in same quarter of 2008.

Production of assembled vehicles nearly doubled in April 2008 from 388 assembled vehicles in March 2008 to 601 assembled vehicles. Production of galvanized sheets declined marginally from 15,498 MT in March 2008 to 15,396 MT in April 2008.

Quantity of cement produced declined marginally from 590.6 thousand MT in the first quarter of 2007 to 581.6 thousand MT in the same quarter of 2008. On the other hand, consumption of cement rose significantly by 22.8 per cent from 423.2 thousand MT to 519.6 thousand MT over the same period.

Milk deliveries in the formal milk sector declined significantly by 24.1 per cent from 108.1 million litres in the first quarter of 2007 to 82.0 million litres in the same quarter of 2008 due to the post election violence.

**e). Tourism and Transport**

The number of visitors who arrived through Jomo Kenyatta International Airport (JKIA) and Moi International Airport declined by 6.8 per cent from 45,876 visitors in March 2008 to 42,749 visitors in April 2008.

The number of passengers who embarked at Jomo Kenyatta International Airport (JKIA) declined significantly by 18.8 per cent from 379,614 persons in the first quarter of 2007 to 308,119 persons in the same quarter of 2008 while passengers who landed also declined significantly by 22.2 per cent from 372,432 persons to 289,927 over the same period.

Total number of vehicles registered an increase of 36.6 per cent from 6,044 vehicles in March 2008 to 9,539 vehicles in April 2008. Motor cycles were the main vehicles registered in April 2008.

**Table 1: Kenya Consumer Price Indices and Inflation Rate**

PERIOD	NAIROBI INDEX	REST* OF URBAN TOWNS INDEX	OVERALL KENYA INDEX	Base Oct 1997=100.	
				OVERALL MONTH ON MONTH INFLATION	UNDERLYING INFLATION RATE****
<b>2007</b>					
May	231.39	222.13	221.83	6.3	5.7
June	224.91	224.95	224.93	11.1	5.2
July	226.53	226.60	226.57	13.6	5.6
August	227.64	224.56	225.79	12.4	5.2
September	230.29	226.74	228.16	11.7	5.1
October	230.93	229.37	229.99	10.6	5.2
November	233.73	232.99	233.28	11.8	5.8
December	242.14	238.26	239.81	12.0	5.9
<b>2008</b>					
January	266.28	257.39	260.94	18.2	7.6
February	267.04	265.92	266.37	19.1	9.3
March	277.61	274.40	274.55	21.8	9.8
April	282.38	281.55	281.88	26.6	9.6
May	293.43	290.69	291.79	31.5	10.5
June	287.09	293.17	290.75	29.3	11.2

**Source: Kenya National Bureau of Statistics**

\* Rest of Urban include: Nyeri, Mombasa, Malindi, Kilifi, Meru, Garissa, Kisii, Kisumu, Nakuru, Kitale, Kabarnet, and Kakamega.

\*\* Provisional

\*\*\* The 'Month on Month' inflation rate is calculated as a percentage change of the CPI between the current month and the same month a year ago.

\*\*\*\* Underlying inflation rate measures inflation on non-food items in the CPI basket

FIG. 1: OVERALL MONTH ON MONTH AND UNDERLYING INFLATION RATES

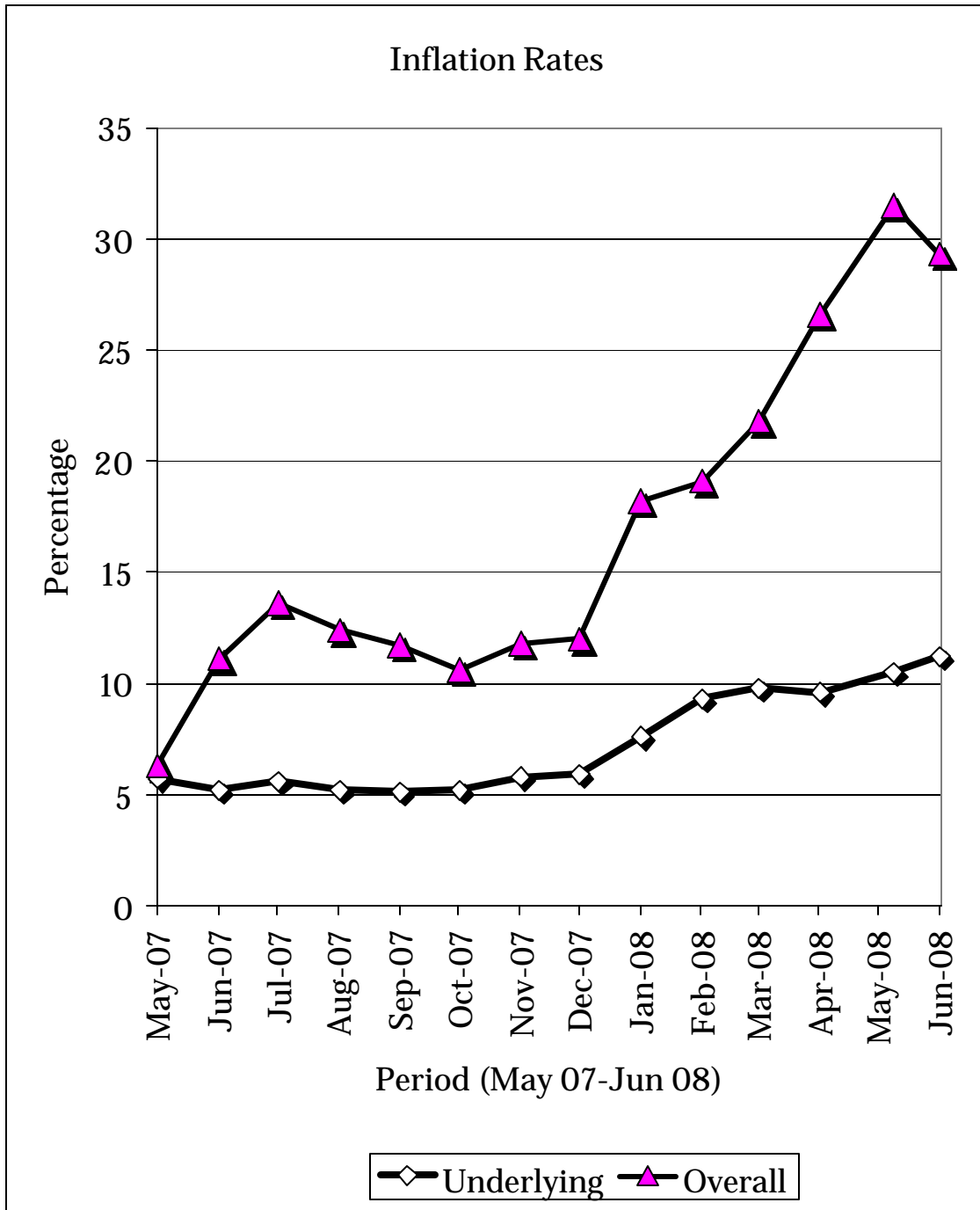


TABLE 2: MEAN FOREIGN EXCHANGE RATES OF KENYA SHILLINGS AGAINST SELECTED MAJOR CURRENCIES AT THE END OF THE MONTH

TABLE 2

CURRENCY	2007								2008				
	May	June	July	Aug	Sep	Oct	Nov	Dec	Jan	Feb	Mar	Apr	May
1 US Dollar	66.966	66.564	67.509	66.748	66.971	67.114	64.424	62.541	70.561	70.639	62.766	62.136	62.029
1 Sterling Pound	132.292	133.304	136.985	135.745	135.309	138.852	132.808	124.785	140.365	140.111	124.453	122.281	122.574
1 EURO	89.969	89.513	92.476	94.251	94.784	96.827	94.939	89.853	104.930	106.702	98.829	97.007	96.160
100 Japanese Yen	55.079	53.922	56.821	57.340	58.132	58.505	58.404	55.237	66.217	66.399	62.924	60.010	58.855
1 SA Rand	9.366	9.381	9.476	9.650	9.729	10.241	9.430	9.015	9.668	9.493	7.736	8.135	8.226
USHS/KES	25.349	24.842	24.671	26.218	26.079	25.882	27.040	27.198	24.447	23.995	26.845	27.054	26.278
TSHS/KES	18.681	19.004	18.872	18.488	18.366	17.359	18.169	17.964	16.512	16.592	19.142	19.458	19.322

\* Mean of commercial banks buying and selling exchange rates prevailing at the end of the month

'Source: Kenya National Bureau of Statistics

FIG 2: END OF MONTH MEAN EXCHANGE RATE OF KENYA SHILLINGS AGAINST MAJOR SELECTED CURRENCIES

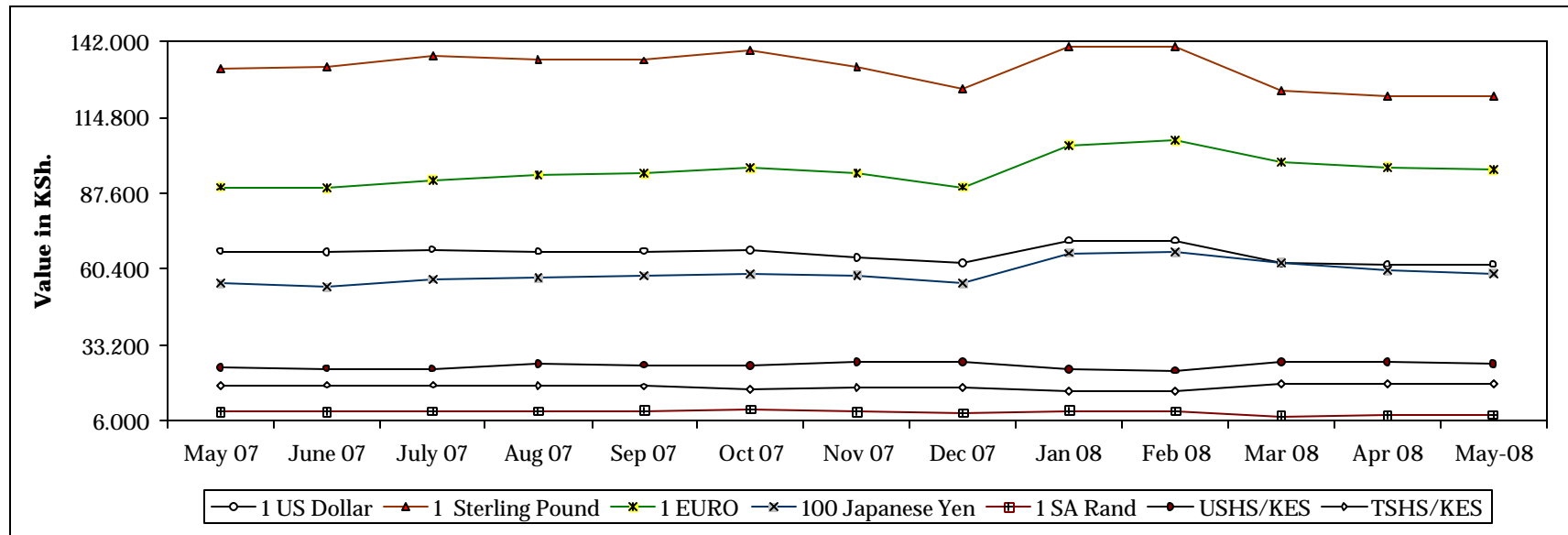


Table 3: Interest Rates (%)

MONTHS	Average Yield Rates 91 - Days Treasury Bills	Rates for Commercial Banks Loans and Advances (Weighted Average)	Overdraft Rates	Inter - Bank Rates	Savings (Commercial Banks Rates)
<b>2007</b>					
April	6.65	13.44	13.58	6.81	1.35
May	6.77	13.38	13.35	7.11	1.57
June	6.53	13.14	13.20	6.98	1.54
July	6.52	13.29	13.34	7.07	1.65
August	7.30	13.04	13.39	7.38	1.60
September	7.35	12.87	13.26	7.59	1.67
October	7.55	13.24	13.29	7.65	1.64
November	7.52	13.39	13.43	6.50	1.65
December	6.87	13.32	12.96	7.05	1.67
<b>2008</b>					
January	6.99	13.78	13.41	7.66	1.72
February	7.28	13.84	13.26	7.18	1.70
March	6.89	14.06	13.48	6.35	1.72
April	7.35	13.91	13.46	6.59	1.71
May	7.76	14.01	13.53	7.72	1.71

Source : Central Bank of Kenya

- data not available

FIG 3: INTEREST RATES

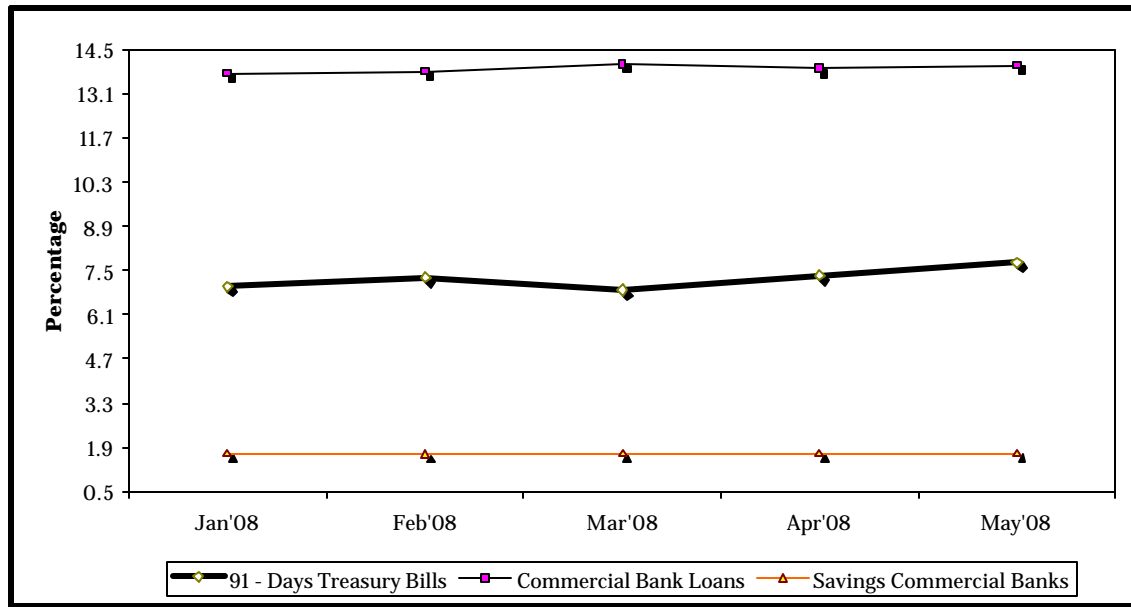


TABLE 4: CAPITAL MARKETS – NAIROBI STOCK EXCHANGE

MONTH	NUMBER OF TRANSACTIONS	NUMBER OF SHARES ('000)	VALUE OF SHARES ('000 KShs)	SHARES INDEX Base Jan 1966=100
Apr-07	62,102	87,455	4,342,380	5,148.1
May-07	53,598	123,724	6,224,924	5,001.8
Jun-07	70,606	151,130	6,079,428	5,146.7
Jul-07	74,162	168,363	6,442,186	5,340.1
Aug-07	96,045	248,136	9,251,195	5,372.0
Sep-07	140,762	289,309	9,901,969	5,146.5
Oct-07	86,422	183,611	7,214,017	4,971.0
Nov-07	73,780	185,853	7,914,802	5,234.5
Dec-07	53,106	140,806	6,017,989	5,444.8
Jan-08	69,754	197,138	7,046,138	4,712.7
Feb-08	74,615	198,833	8,011,260	5,072.4
Mar-08	60,038	180,644	7,320,547	4,843.2
Apr-08	57,526	141,766	5,635,570	5,336.0
May-08	71,959	168,034	6,836,652	5,175.8

Source : Nairobi Stock Exchange

\*\* Provisional

\* End month

FIG 4: NAIROBI STOCK EXCHANGE SHARES INDEX

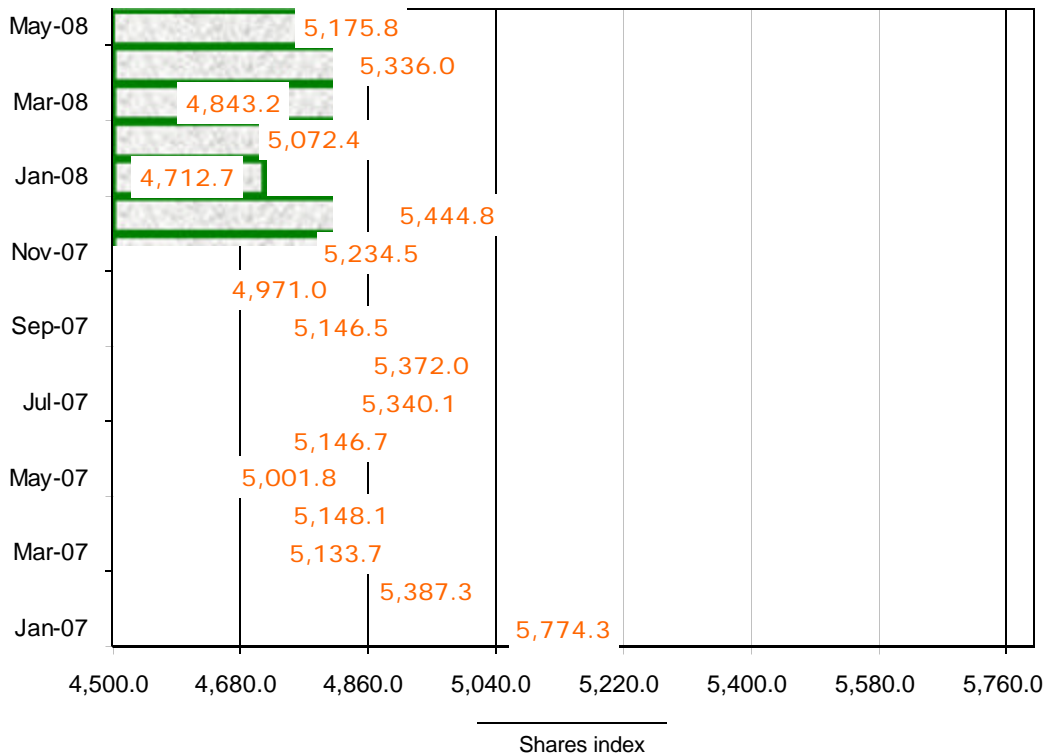


TABLE 5 (a): MONEY SUPPLY

As at end of	MONEY AND QUASI MONEY (M2)				BROAD MONEY (M3)	% CHANGE*** *
	MONEY (M1)*	QUASI - MONEY		TOTAL (M2)		
		(Commercial Banks)**	(NBFIs)			
<b>2007</b>						
January	293,040	253,252	10,618	556,910	657,262	0.65
February	289,727	259,830	11,069	560,626	659,949	0.41
March****	293,928	270,903	11,450	576,281	677,349	2.64
April	299,033	271,383	11,484	581,900	682,168	0.71
May	325,512	249,610	11,014	586,136	690,543	1.23
June	338,825	255,833	10,892	605,550	708,392	2.58
July	339,831	263,415	9,431	612,677	713,613	0.74
August	352,317	265,706	11,025	629,048	730,511	2.37
September	349,774	270,440	10,927	631,141	733,329	0.39
October	350,741	275,024	11,877	637,642	739,663	0.86
November	360,486	274,171	11,888	646,545	745,268	0.76
December	373,310	281,635	11,930	666,875	777,596	4.34
<b>2008</b>						
January	378,042	293,665	10,557	682,264	801,248	7.51
February	378,872	303,175	10,316	692,363	810,207	1.12
March	380,141	307,142	9,859	697,142	811,214	0.12
April	394,763	302,408	12,978	710,149	822,246	1.36
May	368,737	304,077	11,995	684,809	812,818	-1.15

**Source : Central Bank of Kenya**

\* Currency in circulation less cash in banks plus all demand deposits except those of Central Government, Local Govt, Banks, non residents and foreign currency deposits.

\*\* All other deposits in commercial banks except those of Central Government.

\*\*\* Broad Money (M3) includes M2 and Quasi - Money supplied by Non Bank Financial Institutions

\*\*\*\* Compared with previous month.

\*\*\*\*\* Provisional

\*\*\*\*\*From January 2006 in line with the harmonisation of definitions of monetary aggregates within East African Countries(EAC) monetary definitions have been redefined for the following aggregates.

1. Base money =currency outside banks plus deposits at the Central Bank

2.Narrow Money (M1) =currency in circulation plus demand deposits

3. Broad Money M3 in the old series becomes broad money ( M2) and is defined as M1 plus Quasi Monetary

deposits liabilities of both commercial banks and NBFIs

4.M3X in the old series becomes extended broad money supply (M3) and is defined as new M2 plus foreign currency deposits(FCDs)

5. M3XT in the old series is redefined as M4 and consists of new M3 plus other liquid assets.

FIG 5: MONEY SUPPLY (M3)

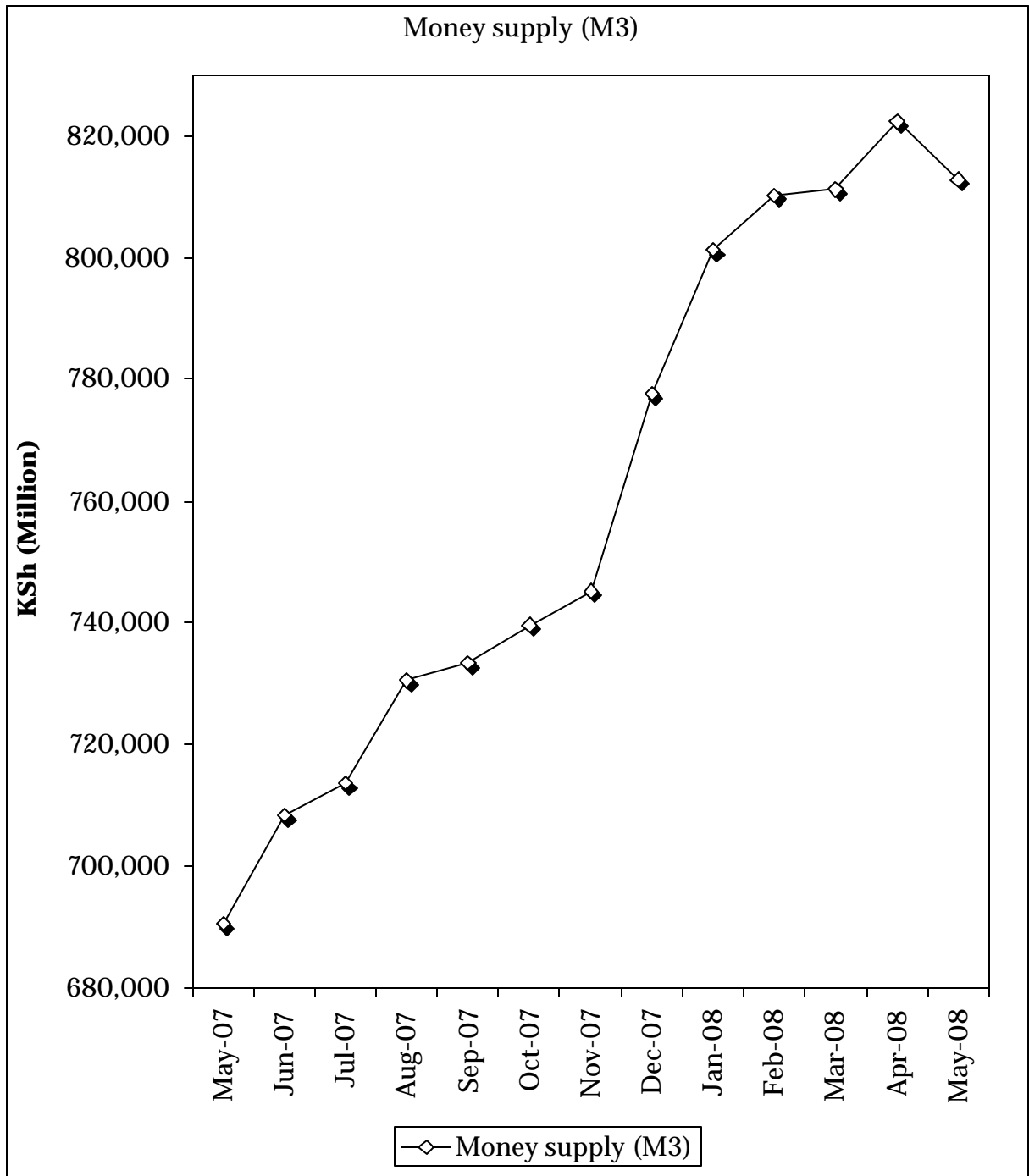


TABLE 5b: FOREIGN EXCHANGE RESERVES

MONTHS	CENTRAL MONETARY AUTHORITY			COMMERCIAL BANKS	GROSS TOTAL	NET FOREIGN EXCHANGE RESERVES
	CENTRAL BANK	CENTRAL GOVERNMENT	TOTAL			
<b>KSh. Million</b>						
<b>2007</b>						
April	182,973	1,346	184,319	70,558	254,877	227,432
May	179,143	1,346	180,489	69,419	249,908	220,686
June	180,883	1,346	182,229	69,514	251,743	223,495
July	189,058	1,334	190,392	71,878	262,270	238,050
August	188,978	1,334	190,312	73,177	263,489	231,745
September	188,562	1,344	189,906	70,297	260,203	225,993
October	191,265	1,344	192,609	76,392	269,001	227,139
November	191,310	1,344	192,654	70,747	263,401	219,822
December	228,677	1,265	229,942	75,343	305,284	255,775
<b>2008</b>						
January	249,055	1,450	250,505	74,449	324,954	278,808
February	239,306	1,450	250,505	74,333	324,838	267,261
March	216,034	1,450	217,484	83,026	300,510	251,014
April	211,637	1,372	213,009	98,622	311,631	263,236
May	214,110	1,372	215,482	112,211	327,693	280,192

Source : Central Bank of Kenya

\* Central Government includes reserve position in the Fund and deposits with Crown Agents.

- data not yet available

FIG 6: FOREIGN EXCHANGE RESERVES

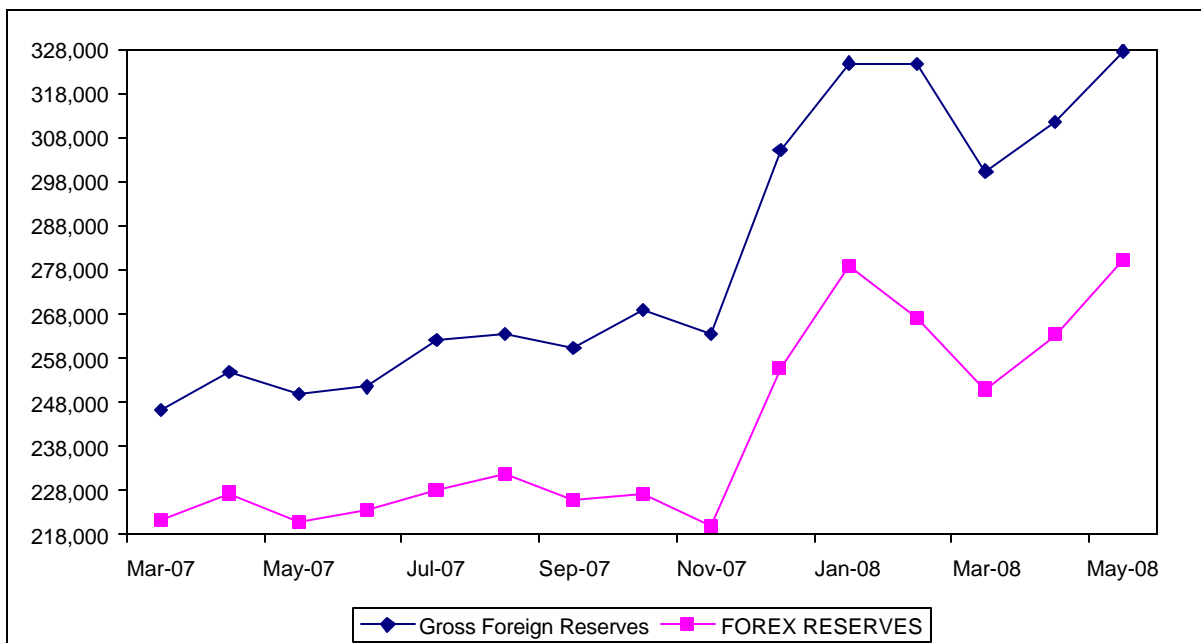


TABLE 6: COFFEE SALES AND PRICES

Months	2007***			2008***		
	QUANTITY (MT)	PRICE (\$ /kg)	PRICE (Ksh /kg)	QUANTITY (MT)	PRICE (\$ /kg)	PRICE (Ksh /kg)
January	4,670	2.88	201.48	2,344	2.89	203.63
February	5,064	3.03	211.04	4,899	3.12	220.19
March	6,839	2.99	207.62	6,117	3.09	193.98
April	6,324	2.67	182.91	6,374	2.72	169.14
May	6,991	2.47	166.41			
June	5,451	2.18	145.61			
July	4,669	2.11	141.77			
August**	0	0	0			
September	3,817	2.36	157.96			
October	4,252	2.24	150.18			
November	2,895	2.21	142.15			
December	1,296	2.86	178.73			
<b>Annual</b>	<b>52,269</b>	<b>2.56</b>	<b>173.91</b>			

Source : Coffee Board of Kenya

\* Auction Price

\*\* Nairobi Coffee Exchange was in recess for most of August 2003, 2005,2006 & 2007

\*\*\* Figures subject to revision

**NB:** MT denotes Metric Tonnes

FIG.7: COFFEE SALES at the NAIROBI COFFEE EXCHANGE

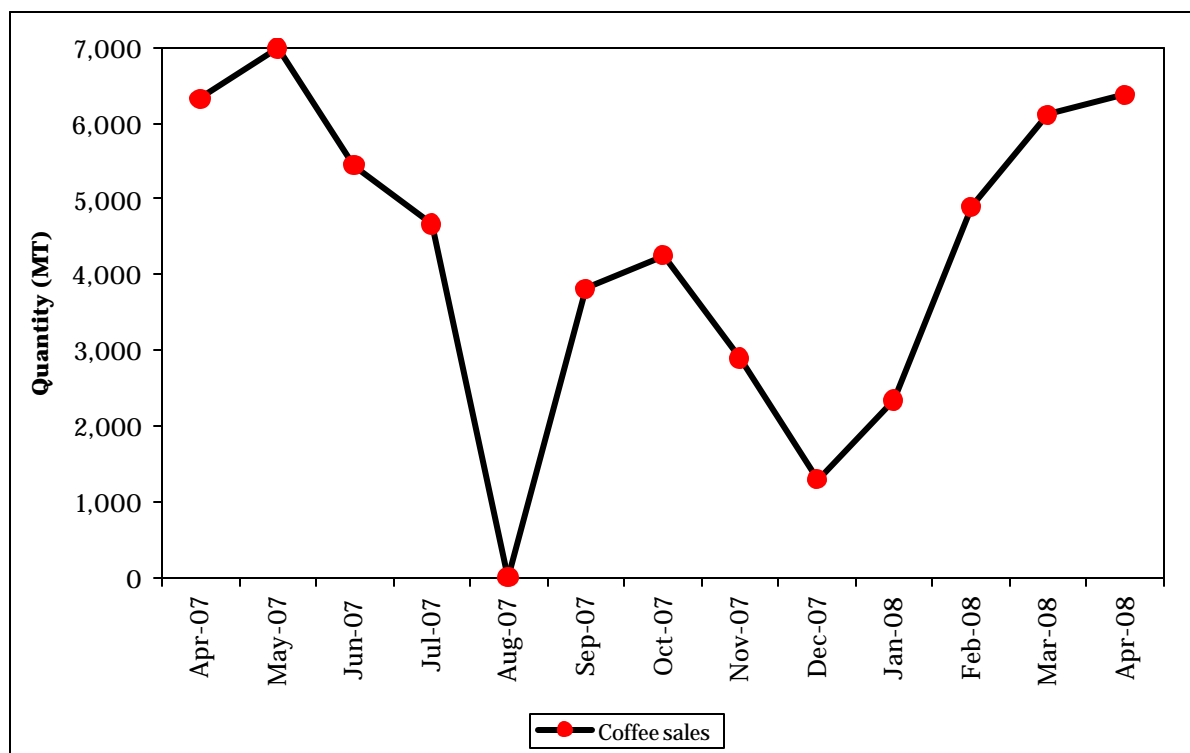


TABLE 7: TEA PRODUCTION AND PRICES

Months	2007**			2008**		
	QUANTITY	PRICE*	PRICE*	QUANTITY	PRICE*	PRICE*
	(MT)	( \$/kg )	(KShs/kg)	(MT)	( \$/kg )	(KShs/kg)
January	41,606	1.80	125.39	29,745	2.28	153.94
February	34,839	1.75	121.57	24,094	2.42	169.94
March	32,256	1.70	117.86	16,916	2.21	145.10
April	30,672	1.65	113.31	27,415	2.31	143.67
May	32,075	1.65	110.54	36,402	2.28	140.85
June	27,333	1.75	116.25			
July	22,742	1.74	116.29			
August	22,752	1.75	118.00			
September	28,953	1.87	125.17			
October	35,210	1.87	124.99			
November	32,336	1.80	118.78			
December	28,832	1.85	118.78			
<b>Annual</b>	<b>369,605</b>	<b>1.77</b>	<b>119.24</b>			

Source: Tea Board of Kenya

MT for Metric Tonnes

\*Auction prices

\*\*Figures subject to revision

FIG.8: TEA PRODUCTION

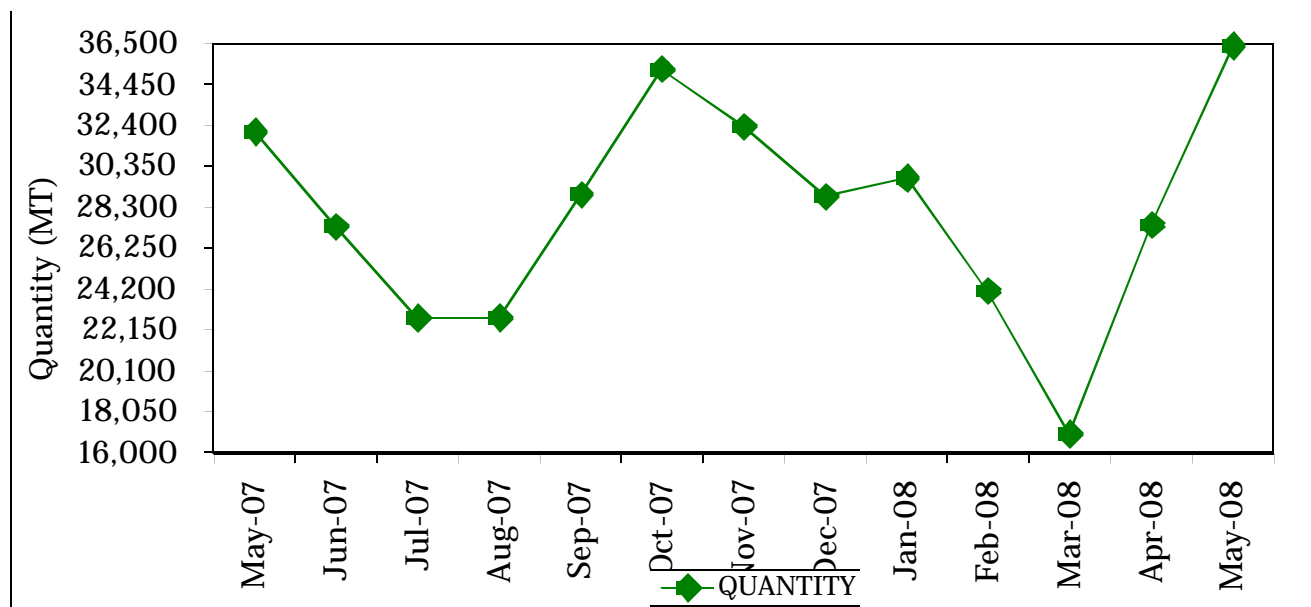


Table 8(a): AVERAGE MONTHLY RETAIL PRICES FOR DRY MAIZE IN THE YEAR-2007

MARKETS	Ksh. Per Kg.											
	Jan	Feb	March	April	May	JUNE	JULY	August	Sep	Oct	Nov	Dec
KIAMBI	17.39	16.67	16.67	14.29	16.67	11.90	11.90	11.90	9.52	9.52	9.52	-
IMIJIRI	15.00	15.00	15.00	15.00	15.00	15.00	16.18	16.12	16.00	15.00	15.00	-
THIKA	18.18	19.05	19.05	19.05	19.05	18.18	19.05	18.18	18.18	18.18	18.18	-
GATUNDU	18.34	16.67	14.29	16.67	15.78	14.29	10.00	17.50	-	19.05	-	-
MUTHITHI	11.90	11.90	10.71	9.52	10.24	10.72	13.33	-	-	-	-	-
MUKUYU	17.55	15.79	15.79	15.00	19.05	15.79	12.50	12.50	-	-	-	14.29
KIRIINI	16.67	16.67	16.67	16.67	14.29	14.29	14.29	14.29	14.29	-	-	14.29
ENGINEER	18.00	16.67	16.25	15.00	16.67	20.00	18.63	15.00	15.00	15.00	15.00	-
NYFRI	19.05	16.67	16.67	14.29	14.29	19.05	19.05	14.29	14.29	14.29	-	-
ENDARASHA	16.67	17.86	19.05	20.00	19.05	-	-	-	-	-	-	-
KARATINA	15.91	16.29	13.64	13.33	14.29	17.50	13.33	14.29	15.00	15.00	15.00	-
GAKINDU	16.67	17.50	17.50	14.29	17.50	12.50	14.29	17.50	17.50	14.29	14.29	-
NANYUKI	20.00	20.00	20.00	20.00	20.00	20.00	17.00	17.00	20.00	20.00	20.00	-
NYAHURURU	17.50	15.95	14.59	12.00	12.00	22.50	11.90	14.29	-	-	-	-
MARIAKANI	20.00	20.00	18.00	20.00	18.00	18.00	18.00	17.00	17.00	17.00	17.00	18.00
KAI OI FNI	20.00	20.00	17.00	17.00	17.00	18.00	18.00	17.00	17.00	17.00	14.00	18.00
MAI INDI	20.00	17.21	20.00	-	20.00	20.00	20.00	20.00	-	-	-	-
KIBAUNI KILIFI	21.00	20.00	18.00	18.00	17.00	16.50	17.00	17.00	17.00	17.00	-	18.00
UKUNDA	35.00	35.00	38.00	35.00	35.00	30.00	25.00	25.00	-	-	-	-
WUNDANYI	-	-	14.00	14.00	13.00	-	-	-	-	-	-	-
MWEMBE TAYARI	20.00	20.00	23.67	30.00	20.00	20.00	20.00	18.00	-	-	-	-
SEGA	20.00	20.00	20.00	22.00	20.00	-	-	-	-	-	-	-
KONGOWEA	15.00	15.00	-	15.00	14.00	14.50	14.00	-	-	-	-	-
GARSFN	-	20.00	25.00	-	-	-	20.00	20.00	25.00	-	-	-
BURA TANA	20.00	20.00	20.00	40.00	20.00	-	-	-	-	-	-	-
RUNYENJES	17.50	17.50	15.00	15.00	15.00	12.50	10.00	12.50	12.50	12.50	15.00	12.50
EMBU TOWN	17.50	17.50	15.00	12.50	12.50	12.00	12.50	12.50	12.50	12.50	15.00	15.00
SIKAGO	20.00	17.50	12.50	12.50	12.50	-	11.75	11.50	11.50	15.00	15.00	15.00
MWINGI	15.00	16.00	15.00	8.00	-	15.00	15.00	10.00	15.00	-	-	-
MIGGWAINI	17.00	16.00	7.27	10.00	10.00	10.00	12.00	12.00	-	12.00	13.00	-
MACHAKOS TOWN	18.18	-	12.00	12.00	5.71	10.00	10.00	12.00	12.00	13.00	-	-
TAI A	12.00	9.77	9.38	9.50	10.00	9.52	9.00	20.00	10.00	10.00	-	-
MAUA	-	25.00	16.25	12.50	15.00	13.75	12.50	-	-	-	-	-
KIANJAI	17.78	17.78	10.00	12.50	11.11	11.11	8.89	-	-	-	-	-
GAKOROMERE	16.00	13.64	8.00	9.09	9.09	10.91	9.09	9.09	9.09	12.00	11.82	11.82
WOTE	17.00	15.00	14.00	11.00	11.00	12.00	12.00	12.00	14.00	14.00	-	17.00
GARISA TOWN	29.63	16.67	16.67	16.67	16.67	16.67	16.67	-	15.00	-	-	-
DARAJA MBILI	13.33	14.29	13.64	14.29	14.29	13.64	12.83	11.36	13.33	14.29	9.52	17.62
KIRIRIGO	16.67	-	-	-	-	16.67	11.90	-	13.33	-	-	-
NYANGUSU	14.29	9.11	10.87	11.90	13.10	10.04	10.87	11.90	9.52	14.29	11.90	13.33
RIOHANDA	13.33	-	-	-	22.62	-	-	16.67	-	-	-	-
NYABITE	15.48	-	-	-	14.29	-	-	14.29	-	-	-	-
MOGONGA	12.38	10.87	10.43	11.90	12.38	13.33	11.74	9.52	9.52	11.90	15.00	14.29
NYAMACHE	14.29	12.10	10.00	14.29	11.90	11.56	10.87	11.90	11.90	-	12.38	14.29
KIBUYE	16.67	14.09	14.32	15.71	-	-	-	-	-	-	-	-
AHFR0	-	-	-	-	-	-	-	-	-	-	-	16.67
KIROSWA	16.19	15.71	14.09	15.24	-	-	-	-	-	-	-	-
SONDU	14.55	13.64	13.64	-	-	-	-	-	-	-	16.67	16.67
BONDO	15.00	15.40	17.50	17.50	14.07	15.00	15.00	16.50	16.50	16.50	16.50	-
OYUGIS	12.38	13.33	-	-	16.19	-	15.71	-	-	-	-	-
KEHACHA	15.91	13.64	-	-	-	-	-	-	-	-	-	-
KABARNET	15.00	-	15.00	15.00	15.56	15.00	-	-	-	-	-	-
NAKURU TWON	22.22	22.22	22.22	22.22	22.22	22.22	22.22	22.22	22.22	22.22	22.22	22.22
KAPSARFT	13.04	13.04	13.04	14.29	15.22	15.22	16.67	-	-	-	-	-
KITALE	-	17.50	16.50	14.29	15.00	14.76	17.50	17.50	17.50	-	-	-
ELDOROT	13.33	13.18	13.64	15.24	18.50	17.50	19.00	17.50	14.00	15.00	14.00	12.50
BURN FOREST	-	10.40	13.46	16.67	11.00	0.50	20.00	13.50	12.80	14.00	14.00	12.00
TURBO	11.43	11.15	10.00	11.43	11.90	17.62	14.00	17.20	16.80	12.00	12.00	-
KIPKAREN	12.86	12.03	12.00	15.00	16.50	17.50	17.50	17.50	16.50	10.40	13.95	10.80
ITEN	11.90	25.00	26.25	11.90	-	-	-	-	20.00	17.50	-	-
KAJIADO TOWN	20.00	20.00	-	20.00	20.00	20.00	20.00	20.00	25.00	20.00	25.00	-
KAPKATFNY	12.52	13.67	13.56	14.29	17.14	17.14	17.14	17.62	14.29	11.90	11.90	-
BUNGOMA TOWN	14.29	13.97	13.64	15.24	13.64	-	-	-	-	14.55	13.64	14.29
KIMILILI	13.33	13.67	12.85	14.29	-	15.71	16.67	15.71	16.67	11.90	13.33	14.29
KAPSOKWONY	13.10	13.34	14.04	15.24	18.10	18.10	17.14	18.10	14.29	13.33	14.29	12.38
BUTERE	-	-	14.70	14.55	15.91	16.52	15.71	-	-	-	-	-
KAKAMEGA	13.97	13.97	13.64	15.24	15.24	16.29	15.91	13.64	13.64	12.73	13.64	13.64
MUMIAS	-	-	14.69	14.65	15.71	16.67	17.00	-	-	-	-	-
MIINDFTA	14.29	14.29	14.29	14.29	15.24	15.24	15.24	14.29	14.29	-	15.24	14.29
CHEPTULA	14.29	14.29	14.29	15.24	15.24	-	15.24	14.29	13.33	-	15.24	14.29
Mbale	14.29	13.64	13.64	14.29	-	15.24	15.24	14.29	14.29	14.55	14.55	13.64
KAWANGWARE	22.00	20.00	20.00	20.00	30.00	21.05	19.05	20.00	19.05	18.10	18.28	20.00
BURMA	20.00	20.00	22.00	22.00	22.00	20.00	20.00	20.00	20.00	20.00	22.00	25.00
KIKOMBA	19.05	19.00	20.00	19.00	18.18	20.00	18.18	20.00	19.05	17.14	20.00	20.45
KANGEMI	19.49	20.50	19.05	19.00	20.00	20.00	20.00	20.00	18.18	19.05	20.00	20.45
KOROKOCHO	17.95	19.50	20.00	19.00	20.00	18.18	18.18	19.00	16.36	19.50	19.05	20.00
TOI	21.00	20.10	17.95	17.50	29.21	17.39	16.67	16.67	15.00	15.38	17.14	18.18
<b>Overall Average Prices</b>	<b>16.92</b>	<b>16.60</b>	<b>15.88</b>	<b>16.00</b>	<b>16.32</b>	<b>15.84</b>	<b>15.48</b>	<b>15.79</b>	<b>15.45</b>	<b>15.09</b>	<b>15.43</b>	<b>15.93</b>

Source: Kenya National Bureau of Statistics

- : Data not available

\*\* Provisional results

Table 8(b): Average Monthly Retail Prices for Dry Maize in the Year 2008

Markets	KSh.per Kg			
	January	February	March	April
KIAMBITI	20.00	20.00	20.00	20.00
LIMURU	17.50	17.50	17.50	22.50
THIKA	19.68	21.88	16.67	
GATIUNDU	17.94	23.81	23.81	
MUTHITHI	19.05	14.58		
MUKIVU	17.50	18.42		
KIRIAINI	16.67	16.67	19.05	
ENGINEER	15.00			
NANYUKI	18.18	18.50	20.00	20.00
NYAHURURU	20.00	20.00	20.00	
MARAKANI	20.00	20.00	20.00	
KALOLENI	20.00	20.00	20.00	
MAINDI	27.78	27.78	27.78	26.88
KIRAIINI KIIIFI	20.00	20.00	20.00	
UKUNDA	30.00			
MWEMBE TAYARI	25.00	20.00		
SEGA	24.00			
KONGOWA	25.00	20.00		
GARSEN	25.00	22.50	20.00	
RINYENIES	15.00	15.00	32.50	20.00
EMBU TOWN	17.50	18.75	15.00	20.00
SIKAGO	17.50	17.50	15.00	17.50
MWINGI	16.00	16.00	16.00	18.00
MIGGWAINI			14.00	13.00
KALINDU	15.00	16.00	17.00	
MACHAKOS TOWN	16.00	17.00	17.00	
TATA	16.00	18.00	17.00	13.33
MATTA			21.25	
KIANIAI			16.67	
GAKOROMERE	13.64	16.00	12.73	13.64
WOTE	17.00	17.00	18.00	18.00
GARISA TOWN			25.00	
DARAJA MBIJI	17.27	20.45	18.62	20.00
KIBIRIGO		20.45	20.45	
NYANGUSU	14.29		16.67	
RIOCHANDA		16.80	21.43	
NYARITE		16.00	20.45	
MOGONGA	14.29	14.29		
NYAMACHE	16.67	17.14	17.51	
KIRIYE		17.27	18.18	21.43
AHERO	23.81	22.73		
KIROSWA		19.05	22.73	
SONDU	20.45	20.45		
RONDO		20.00	20.00	21.00
SIAYA	22.73	16.36	19.55	
NGIYA	18.18	22.73	17.27	
UNGUNIA	22.73	15.23	17.27	18.18
OYUGIS		18.58	20.00	
KEHACHA		17.50	20.00	20.00
KABARNET	15.00	15.00	15.00	15.00
KAPSABET		19.05	19.05	25.00
KITALE		17.50	17.50	25.00
EIDORET	20.00	15.40	15.00	19.05
BURN FOREST	12.50	15.00	15.00	
TURBO	13.33	13.43	50.00	18.10
KIPKAREN	15.00	16.00	16.13	25.00
KAHADO TOWN	25.00	20.00		25.00
BUNGOMA TOWN	16.67	16.67	16.67	
KAPSOKWONY		16.19	17.50	
RUITERE		16.05	17.39	23.91
KAKAMEGA	20.45	18.18		
MUMIAS				26.19
MINDETA	19.05	16.67		
CHEPTUJA	23.81	16.67		
Mhale	23.81	16.67		
KAWANGWARE	21.00	22.00	25.00	25.00
BURMA	25.00	25.00	25.00	32.50
KIKOMBA	21.50	22.00	22.00	23.50
KANGEMI	22.00	22.50	23.00	23.00
KOROKOCHO	20.00	20.00	21.50	23.00
TOI	21.43	21.43	23.81	23.81
<b>Overall Average Prices</b>	19.41	18.54	19.85	21.14

Source: Kenya National Bureau of Statistics

- : Data not available

\*\* Provisional results

Table 8(c): Average Monthly Retail Prices for Dry Beans Prices (2007)

MARKETS	Ksh. Per Kg.											
	Jan	Feb	Mar	April	May	June	July	Aug	Sep	Oct	Nov	Dec
KIAMBI	30 95	29 76	28 57	28 57	28 57	33 33	38 10	38 10	35 71	38 10	38 10	-
IIMIRII	40 00	35 00	45 00	40 00	37 50	40 00	35 63	26 27	35 00	35 00	50 00	-
THIKA	36 36	40 00	38 10	38 10	38 10	40 00	36 36	36 36	37 50	42 86	45 00	-
GATUNDU	38 10	35 71	38 10	35 71	38 10	35 71	38 10	38 10	38 10	38 10	38 10	-
MUTHITHI	34 52	38 10	38 10	40 48	38 10	38 10	35 71	-	-	-	-	-
MIKIIYII	34 96	33 33	38 10	38 10	34 17	33 33	33 33	33 33	-	-	-	38 10
KIRIANI	42 86	40 91	42 86	42 86	42 86	40 48	40 48	40 48	40 48	-	-	40 91
FNGINFFR	50 00	50 00	50 00	50 00	54 55	50 00	39 50	45 00	40 00	40 00	45 00	-
NYERI	42 86	40 48	41 86	42 86	42 86	47 62	47 62	38 10	47 62	47 62	-	-
FNDARASHA	47 62	47 62	47 62	60 00	57 14	-	-	-	-	-	-	-
KARATINA	40 91	45 45	31 82	33 33	40 00	47 62	38 10	40 48	60 00	50 00	50 00	-
GAKINDU	40 00	38 10	38 10	40 00	42 86	42 86	40 00	38 10	38 10	42 50	45 00	-
NANYIKI	40 00	38 18	36 36	38 89	44 44	44 44	40 00	40 00	40 00	31 82	44 44	-
NYAHIRIRII	32 00	40 02	40 91	41 67	40 00	40 00	42 86	42 86	-	-	-	-
MARIAKANI	40 00	40 00	40 00	38 10	40 00	40 00	40 00	40 00	40 00	40 00	40 00	40 00
KAI OI FNI	42 50	45 00	40 00	40 00	40 00	40 00	40 00	40 00	40 00	40 00	40 00	45 00
MAI INDI	50 00	40 00	40 00	-	40 00	40 00	40 00	40 00	-	-	-	-
KIRAIINI KII IFI	40 00	-	40 00	40 00	40 00	40 00	40 00	40 00	40 00	40 00	-	45 00
IJKINDA	46 00	48 00	48 00	48 00	48 00	48 67	47 50	50 00	-	-	-	-
WIINDANYI	-	-	50 00	50 00	50 00	-	-	-	-	-	-	-
MWFMBF TAYARI	38 00	41 00	42 00	42 00	42 00	40 00	42 00	42 00	-	-	-	-
MACKINON	35 00	35 00	-	-	-	-	-	-	-	-	-	-
SEGA	45 00	45 00	40 00	42 00	45 00	-	-	-	-	-	-	-
KONGOWFA	35 00	35 00	36 00	36 00	38 00	40 00	38 00	-	-	-	-	-
HOLA	40 00	40 00	55 00	45 00	-	-	-	-	-	-	-	-
GARSEN	-	40 00	40 00	40 00	-	-	50 00	40 00	40 00	-	-	-
BIRA TANA	50 00	50 00	45 00	40 00	40 00	-	-	-	-	-	-	-
RINYENIES	37 50	35 00	37 50	35 00	35 00	30 00	30 00	30 00	35 00	40 00	37 50	37 50
FMBU TOWN	37 50	35 00	30 00	37 50	42 50	33 33	30 00	35 00	32 50	40 00	40 00	50 00
SIKAGO	30 00	30 00	35 00	30 00	27 50	-	30 00	30 00	27 50	45 00	45 00	50 00
MWINGI	35 00	35 00	35 00	20 00	-	35 00	35 00	25 00	35 00	-	-	-
MIGGWAINI	27 27	22 73	22 73	40 00	25 00	25 00	25 00	25 00	-	40 00	45 00	-
MACHAKOS TOWN	38 89	35 00	35 00	36 84	40 00	40 00	35 00	40 00	40 00	40 00	-	-
TAI A	35 00	24 44	25 81	27 14	28 57	40 00	38 10	33 33	38 00	38 00	-	-
MAIIA	-	37 50	35 00	31 25	33 75	30 00	43 75	-	-	-	-	-
KIANIAI	30 00	27 78	27 78	31 25	24 44	24 44	35 56	-	-	-	-	-
GAKOROMFRF	35 00	30 46	36 36	36 36	36 36	36 36	36 36	36 36	36 36	36 36	40 00	40 00
WOTE	35 00	35 00	35 00	40 00	40 00	35 00	40 00	42 00	42 00	45 00	-	45 00
GARISA TOWN	45 75	47 06	47 06	47 06	47 06	44 44	47 06	-	47 06	-	-	-
DARAJA MBII I	28 57	27 27	21 82	33 33	33 33	30 43	27 72	34 09	38 10	33 33	30 95	38 10
KIBIRIGO	32 67	29 55	-	-	-	38 10	38 10	-	-	-	-	-
KIROKA	-	29 55	-	-	-	-	-	-	-	-	-	-
NYANGUSU	35 00	32 31	-	35 71	21 73	22 82	19 57	23 81	23 81	23 81	28 57	26 19
RIOHANDA	21 45	-	-	-	28 57	-	-	30 95	-	-	-	-
NYARITF	36 91	-	-	-	33 33	-	-	33 33	-	-	-	-
MOGONGA	33 33	24 00	25 00	28 57	21 43	23 16	23 00	-	30 95	28 57	30 95	30 95
NYAMACHE	30 95	26 79	28 00	-	33 33	30 20	28 13	26 19	30 95	-	28 57	28 57
KIRIUYE	38 10	36 36	39 77	45 24	-	-	-	-	-	-	-	-
AHFRO	-	-	-	-	-	-	-	-	-	-	47 62	47 62
KIROSWA	40 48	37 73	41 76	52 38	-	-	-	-	-	-	-	-
SONDU	33 33	33 33	30 95	-	-	-	-	-	-	-	42 86	47 62
BONDO	45 45	46 36	46 36	50 00	34 10	45 45	45 45	54 55	59 09	54 55	54 55	-
OYUGIS	35 71	35 57	-	-	40 48	35 71	35 71	-	-	-	-	-
KFHACHA	45 00	50 00	-	-	-	-	-	-	-	-	-	-
KARBNET	30 00	-	40 00	40 00	40 00	40 00	-	-	-	-	-	-
NAKIRI TWON	33 33	33 33	44 44	38 89	33 33	44 44	44 44	44 44	33 33	33 33	33 33	30 00
KAPSARFT	44 99	39 07	37 35	54 55	39 13	39 13	19 05	-	-	-	-	-
KITAI F	-	33 33	38 10	47 62	38 10	38 10	34 09	33 33	28 57	-	-	-
FI DORET	38 48	36 36	36 36	31 82	40 91	38 10	40 91	45 45	40 00	45 00	45 45	45 00
BURN FOREST	35 42	32 00	29 63	-	47 62	47 62	50 00	45 45	36 36	36 36	40 91	40 91
TIIRRO	36 60	34 42	30 00	35 71	38 10	33 33	30 00	22 73	30 00	-	34 09	-
KIPKARFN	33 33	32 58	36 36	38 10	36 36	36 61	31 82	32 50	32 50	36 36	35 68	36 36
ITFN	38 10	38 10	38 10	-	-	-	-	-	50 00	35 00	-	-
KAJIADO TOWN	50 00	45 00	-	40 00	44 44	44 44	44 81	40 00	40 00	20 00	60 00	-
BINGOMA TOWN	38 10	36 76	40 00	36 36	47 62	-	-	-	-	36 36	36 36	36 36
KIMII II I	28 57	30 93	30 84	30 95	-	33 33	30 00	26 19	28 57	33 33	36 36	40 91
KAPSOKWONY	32 86	33 99	36 07	38 10	38 10	38 10	38 10	34 85	-	33 33	36 36	36 36
BITFERE	-	-	29 55	35 57	34 09	30 43	33 33	-	-	-	-	-
KAKAMFGA	34 90	37 23	36 36	42 86	38 10	37 23	29 55	40 91	45 45	47 73	45 45	45 45
MIIMIAS	-	-	37 37	36 23	31 41	33 33	-	-	-	-	-	-
MI INDETA	39 13	39 13	38 10	38 10	42 86	38 10	38 10	38 10	38 10	-	38 10	52 38
CHEPTII A	39 13	34 78	38 10	38 10	35 71	-	38 10	38 10	-	47 62	40 48	47 62
Mhale	41 30	41 30	39 13	42 86	-	45 24	40 91	45 45	45 45	45 45	54 55	54 55
KAWANGWARF	42 11	40 00	40 00	40 00	30 00	38 10	40 00	40 00	45 00	43 64	45 00	20 45
BIIRMA	45 00	42 00	80 00	40 00	40 00	40 00	40 00	40 00	40 00	42 00	42 00	45 00
KIKOMBA	41 03	40 00	40 00	38 10	42 11	40 00	39 05	38 10	36 36	38 10	40 00	40 00
KANGEMI	42 50	40 82	40 20	40 00	40 00	38 10	41 00	40 00	40 91	40 91	40 48	45 24
KOROKOCHO	40 00	40 00	40 00	40 00	38 10	39 05	40 00	40 00	38 10	40 00	40 00	40 00
TOI	40 82	40 00	40 40	40 00	40 00	38 10	38 28	38 10	40 00	42 86	21 43	45 00
<b>Overall Average Prices</b>	<b>38.06</b>	<b>37.17</b>	<b>38.32</b>	<b>39.27</b>	<b>38.23</b>	<b>37.87</b>	<b>37.19</b>	<b>37.22</b>	<b>38.64</b>	<b>39.24</b>	<b>40.88</b>	<b>40.97</b>

'Source: Kenya National Bureau of Statistics

- : Data not available

Table 8(d): Average Monthly Retail Prices for Dry Beans Prices (2008)

	Ksh. Per Kg.			
Markets	January	February	March	April
KIAMBU	38.10	35.71	35.50	60.00
LIMURU	75.00	60.00	60.00	70.00
THIKA	55.00	54.55	54.55	.
GATIINDI	39.30	45.24	42.86	.
MUTHITHI	57.14	52.38	.	.
MUKUYU	38.10	38.10	.	.
KIRIAINI	47.83	47.83	63.64	.
ENGINEER	45.00	.	.	.
NANYUKI	40.00	42.50	50.00	70.00
NYAHIRIRI	39.13	50.00	52.38	.
MARIAKANI	50.00	60.00	60.00	.
KAI OI FNI	50.00	60.00	60.00	.
MAI INDI	70.59	75.00	68.18	72.22
KIBAUNI KILIFI	60.00	60.00	70.00	.
UKUNDA	50.00	.	.	.
MVEMBE TAYARI	60.00	48.00	.	.
SEGA	55.00	.	.	.
KONGOWFA	70.00	55.00	.	.
GARSEN	50.00	55.00	60.00	.
RIINYFN.IFS	45.00	41.25	68.81	55.00
EMBU TOWN	40.00	40.00	50.00	55.00
SIKAGO	40.00	42.50	50.00	55.00
MWINGI	40.00	40.00	50.00	60.00
MIGGWAINI	.	.	40.00	50.00
KAI LINDI	50.00	58.00	70.00	.
MACHAKOS TOWN	55.00	45.00	45.00	.
TAI A	27.00	40.00	40.00	47.62
MAUA	.	.	62.50	.
KIANJAI	.	.	50.00	.
GAKOROMERE	36.36	40.91	55.00	50.00
WOTE	50.00	52.50	60.00	63.00
GARISA TOWN	.	.	66.67	.
DARAJA MBII	40.91	54.55	46.43	61.36
KIRIRIGO	.	45.45	47.62	.
NYANGIISI	28.57	.	42.86	.
RIOCHANDA	.	46.15	54.55	.
NYABITE	.	42.31	54.55	.
MOGONGA	38.10	36.36	.	.
NYAMACHE	27.27	47.62	40.18	.
KIRIYF	.	65.91	68.18	68.18
AHFRO	61.90	61.90	.	.
KIROSWA	.	77.27	47.71	.
SONDU	52.38	52.38	.	.
BONDO	.	85.00	85.00	56.67
SIAYA	54.55	53.03	90.91	.
NGIYA	47.17	54.55	68.18	.
UNGUNJA	45.45	52.27	51.14	72.73
OYIGIS	.	66.38	71.43	.
KFHACHA	.	54.55	68.18	68.18
KABARNFT	50.00	50.00	50.00	55.00
KAPSABET	.	71.43	68.18	72.73
KITALE	.	54.05	54.55	68.18
ELDORET	59.09	43.19	68.18	75.00
BURN FOREST	68.18	68.18	60.91	.
TURRO	42.50	53.75	.	75.00
KIPKARFN	45.45	54.55	54.55	68.18
KALIAO TOWN	60.00	70.00	80.00	80.00
BUNGOMA TOWN	47.62	61.90	68.18	.
KAPSOKWONY	.	40.48	47.01	.
BUTERE	55.80	62.29	50.79	73.91
KAKAMEGA	54.55	68.18	.	70.46
MUMIAS	.	.	.	.
MUNDITA	71.43	71.43	.	.
CHEPTIJA	65.04	71.43	.	.
Mhale	.	65.22	.	.
KAWANGWARE	45.00	50.00	60.00	68.00
BURMA	45.00	50.00	50.00	60.00
KIKOMBA	48.00	50.00	60.00	65.00
KANGEMI	45.00	55.00	65.00	70.00
KOROKOCHO	43.50	45.00	50.00	62.50
TOI	47.62	50.00	63.64	72.73
Overall Average Prices	50.00	53.71	56.98	62.63

\*Source: Kenya National Bureau of Statistics

- : Data not available

... Provisional results

Table 9: Export of Coffee, Tea and Horticultural Produce

Month	COFFEE *		TEA		HORTICULTURE	
	QUANTITY (MT)	VALUE (KSh. Million)	QUANTITY (MT)	VALUE (KSh. Million)	QUANTITY (MT)	VALUE KSh. Million
Jan-07	2,462.4	452.6	35,974.2	4,704.5	14,495	4,626.7
Feb-07	3,388.2	653.4	36,657.9	4,635.4	14,603	6,023.8
Mar-07	4,916.1	1,032.7	35,964.8	4,607.9	16,108	7,128.5
Apr-07	4,482.2	963.4	27,183.5	3,417.6	15,654	4,149.0
May-07	4,860.7	951.6	36,849.3	4,519.4	15,667	4,103.8
Jun-07	8,164.9	1,544.7	32,313.5	3,936.6	13,778	7,988.3
Jul-07	6,052.2	1,105.2	33,697.5	4,231.6	16,306	4,915.9
Aug-07	5,903.5	939.9	28,670.6	3,596.1	15,581	6,842.6
Sep-07	7,866.0	1,429.4	39,337.0	5,093.0	16,099	3,729.1
Oct-07	4,698.5	875.8	25,858.0	3,410.1	18,727	5,489.6
Nov-07	3,665.5	689.1	31,356.6	3,979.6	18,249	6,773.7
Dec-07	3,248.1	630.3	20,102.0	2,433.7	16,881	5,482.9
Jan-08	2,698.8	558.4	28,790.2	4,054.6	16,553	6,683.9
Feb-08	3,270.3	812.7	32,723.0	5,303.6	18,901	9,719.5
Mar-08	3,989.2	1,071.0	27,943.7	4,308.3	18,927	6,538.4
Apr-08	4,611.3	1,107.7	40,724.4	5,464.0	18,168	4,256.8
May-08	4,820.5	1,128.1	30,518.6	4,525.4	16,950	4,052.0
Jun-08	-	-	-	-	15,336	4,265.0

Source: Customs and Horticultural Crop Development Authority

- Figures not available

\* Coffee, not Roasted

\*\* Provisional

- data not available

Table 10: Monthly Exports of Horticultural Products

Months	CUT FLOWERS				FRUITS				VEGETABLES			
	2007**		2008**		2007**		2008**		2007**		2008**	
	QUANTITY (MT)	VALUE (KSh. Million)	QUANTITY (MT)	VALUE (KSh. Million)	QUANTITY (MT)	VALUE (KSh. Million)	QUANTITY (MT)	VALUE (KSh. Million)	QUANTITY (MT)	VALUE (KSh. Million)	QUANTITY (MT)	VALUE (KSh. Million)
January	7,380	3,015.93	8,494.94	5,288.07	1,224.93	195.16	533.40	63.05	5,889.41	1,415.57	7,524.88	1,332.79
February*	7,908	2,853.19	10,178.52	6,806.08	1,753.77	182.45	1,431.75	111.22	4,941.00	2,988.19	7,290.64	2,802.23
March	9,016	5,534.80	9,116.38	4,836.41	1,798.53	198.26	2,476.80	203.31	5,293.65	1,395.41	7,334.14	1,498.72
April	7,944	2,134.58	8,100.43	2,737.35	1,399.79	171.23	2,263.94	180.92	6,310.19	1,843.24	7,806.06	1,338.55
May	8,020	2,095.95	8,120.99	2,798.79	1,219.97	131.32	1,737.73	130.44	6,427.08	1,876.49	7,090.86	1,122.58
June	6,292	6,023.82	6,804.99	2,681.59	1,126.85	202.73	1,718.46	169.36	6,358.88	1,761.76	6,812.98	1,413.61
July	5,741	2,735.92			1,759.63	176.76			8,805.25	2,003.21		
August	6,136	4,360.81			2,386.14	184.39			7,058.62	2,297.37		
September	7,088	2,210.74			1,400.32	126.50			7,610.32	1,391.86		
October	8,571	3,581.57			675.46	88.94			9,480.67	1,819.08		
November	8,540	4,590.68			401.30	62.11			9,307.21	2,120.86		
December	8,515	3,963.55			524.77	78.06			7,840.96	1,441.26		
<b>Total</b>	<b>91,152</b>	<b>43,102</b>			<b>15,671</b>	<b>1,798</b>			<b>85,323</b>	<b>22,354</b>		

Source: Horticultural Crops Development Authority

- data not available

\*\* Figures subject to revision

Table 11: Kenya's External Trade, Apr 2007 – May 2008

KSh million						
MONTH	Domestic Exports	Re-Exports	Total Exports	Total Imports	Volume of Trade	Home use Imports
<b>2007</b>						
April	19,662.10	804.64	20,466.74	43,589.49	64,056.23	46,603.64
May	24,009.95	1,034.52	25,044.47	51,498.55	76,543.02	46,853.44
June	22,071.82	742.21	22,814.03	50,201.13	73,015.16	48,928.45
July	22,673.25	1,011.29	23,684.54	53,190.58	76,875.12	52,793.97
August	22,940.52	950.11	23,890.63	52,604.06	76,494.69	52,283.38
September	20,258.79	1,005.65	21,264.45	48,460.16	69,724.61	48,601.46
October	23,516.06	1,168.19	24,684.25	59,049.87	83,734.12	55,189.14
November	24,970.24	1,103.51	26,073.75	57,731.91	83,805.65	53,993.58
December	16,940.05	1,125.93	18,065.98	37,757.37	55,823.34	41,857.30
<b>2008</b>						
January	22,767.81	985.72	23,753.53	64,341.01	88,094.54	56,488.85
February	31,277.01	1,050.16	32,327.17	58,051.43	90,378.61	56,707.94
March	25,654.53	1,460.93	27,115.46	53,200.79	80,316.25	52,191.67
April	27,893.33	1,292.86	29,186.19	54,785.45	83,971.64	51,389.44
May	24,436.30	1,303.31	25,739.61	56,877.43	82,617.03	57,151.43

Source: Customs Department

Table 12: Major Destinations of Domestic Exports, Jan 2007 – May 2008

KSh Million

Month	Uganda	Tanzania	United Kingdom	Pakistan	Netherlands	Egypt	Germany	Rwanda	USA	United Arab Emirates	France
<b>2007</b>											
January	2,194.19	1,655.15	2,513.25	1,782.64	1,956.08	714.53	400.12	367.73	1,284.42	372.88	202.30
February	2,482.22	1,698.21	2,358.62	1,488.64	1,959.03	1,342.35	491.43	440.81	1,460.60	316.57	314.38
March	2,280.71	1,898.31	2,351.90	1,585.23	1,903.07	934.21	501.36	413.17	1,754.05	361.54	311.25
April	2,216.63	1,440.89	1,967.96	1,052.85	1,840.74	807.19	360.77	412.48	1,455.38	268.11	278.48
May	2,694.90	1,774.90	2,254.36	1,243.11	2,175.39	1,054.98	552.32	321.01	1,843.61	899.23	300.59
June	2,451.55	1,755.65	2,289.00	1,205.08	1,643.58	687.43	619.88	390.13	1,909.87	847.90	260.44
July	2,374.16	1,903.18	2,338.07	1,350.60	1,792.98	434.56	587.58	439.37	1,506.16	788.89	319.68
August	3,307.83	1,965.68	2,373.45	896.23	1,373.62	477.61	436.18	487.93	1,706.02	766.11	321.59
September	2,523.28	1,748.56	2,320.75	898.54	1,523.81	594.43	282.15	489.78	1,303.41	740.85	445.35
October	2,645.69	1,810.40	3,063.69	550.16	2,180.57	645.14	528.35	713.51	1,562.34	1,133.98	433.64
November	3,224.78	1,952.63	2,810.58	838.45	2,046.09	857.27	571.37	540.50	1,643.20	1,203.54	452.48
December	1,766.75	1,257.42	2,025.86	535.16	1,503.12	438.06	569.63	364.82	1,341.31	570.10	299.66
<b>2008</b>											
January	2,599.18	1,705.11	3,423.94	791.97	2,728.84	580.95	562.45	345.54	1,241.43	545.50	426.52
February	3,292.99	1,973.99	3,853.97	1,030.52	2,878.64	1,306.73	666.82	743.15	1,975.69	804.75	372.62
March	3,063.24	1,756.01	3,118.21	683.00	2,256.37	1,545.47	591.34	505.26	1,371.59	784.62	389.71
April	3,656.76	2,130.95	2,892.92	924.21	2,044.85	2,102.05	528.64	502.74	1,634.07	845.66	429.07
May	2,564.19	1,873.91	2,998.92	1,306.61	2,005.69	663.55	421.87	439.56	1,509.75	623.16	305.94

Source: Customs Department

\* Provisional

Table 13: Major Origins of Imports, Apr 2007-May 2008

KSh Million											
Month	United Arab Emirates	United Kingdom	South africa	Saudi Arabia	Japan	India	USA	Germany	Netherlan ds	France	China
<b>2007</b>											
April	4,253.57	2,256.83	3,410.75	781.11	3,016.11	5,858.49	1,783.78	1,521.38	872.20	1,415.11	2,688.15
May	7,180.63	2,194.04	2,293.85	3,619.23	3,699.61	4,728.17	1,808.42	1,771.03	734.12	1,230.55	3,713.94
June	8,045.28	2,429.02	3,305.45	684.38	3,245.74	3,641.64	1,582.84	2,278.69	846.14	1,333.45	2,980.91
July	8,558.70	3,109.16	2,656.87	1,045.34	3,517.14	3,279.75	2,869.76	2,125.78	888.07	1,502.37	4,890.09
August	9,622.73	2,059.30	3,496.57	844.11	3,671.30	4,810.22	1,704.90	1,724.03	631.62	2,810.53	4,772.91
September	6,899.09	3,079.21	2,763.51	763.47	4,092.03	5,099.49	1,078.67	2,547.32	902.71	962.63	4,015.59
October	9,122.97	2,775.45	3,378.61	3,460.34	3,707.38	8,298.77	1,978.18	2,421.37	771.97	1,789.51	4,817.74
November	12,480.07	2,511.87	4,365.40	688.16	4,208.35	5,525.63	1,729.25	2,024.66	479.27	953.28	4,927.13
December	2,545.08	1,215.17	2,824.88	1,110.78	3,350.12	2,896.46	1,801.02	1,102.05	903.19	1,082.24	3,103.81
<b>2008</b>											
January	13,324.16	2,163.69	3,939.42	1,195.25	3,997.79	6,778.99	1,498.30	1,779.34	805.11	1,979.94	6,075.25
February	9,510.89	2,921.46	3,210.71	945.31	3,482.08	5,138.42	2,033.86	2,603.10	1,327.21	1,356.22	4,770.77
March	6,839.39	1,746.01	3,066.48	4,363.49	3,487.52	6,476.49	2,984.79	1,866.69	577.86	1,042.04	3,428.89
April	12,274.48	1,749.26	3,155.40	2,319.25	3,484.89	5,981.93	2,910.16	1,921.65	1,369.27	1,020.72	3,311.61
May	10,534.04	1,873.07	3,005.93	1,302.39	3,035.20	9,281.27	3,606.34	1,482.98	885.92	879.66	4,430.19

Source: Customs Department

\* Provisional

Table 12 (a): Domestic Exports by Broad Economic Category

DESCRIPTION	Million KSh													
	2007									2008				
	May	June	July	August	Sept	October	Nov	December	Total	January	February	March	Apr	May
FOOD AND BEVERAGES .. .. .	9,554	9,311	9,470	8,765	8,114	9,111	9,537	6,828	105,765	9,081	11,620	10,261	12176	10249
INDUSTRIAL SUPPLIES (Non-Food) ..	5,797	5,249	6,380	6,350	5,158	5,940	7,386	4,452	66,441	5,901	7,915	6,846	6967	6396
FUEL AND LUBRICANTS .. .. .	1,457	576	627	1,338	646	737	465	251	9,346	305	1,762	352	487	378
MACHINERY & OTHER CAPITAL EQUIPMENT ..	274	299	264	289	487	526	500	366	4,427	279	676	701	674	526
TRANSPORT EQUIPMENT .. .. .	264	193	393	352	270	407	278	131	3,472	167	339	235	336	232
CONSUMER GOODS NOT ELSEWHERE SPECIFIED ..	6,664	6,444	5,539	5,846	5,581	6,793	6,804	4,912	72,161	7,035	8,965	7,256	7255	6654
GOODS NOT ELSEWHERE SPECIFIED ..	0.00	0.00	0.00	1.00	3.00	2.00	0.00	0.00	7	0.00	0.00	4.00	0	0
<b>TOTAL .. .. .</b>	<b>24,010</b>	<b>22,072</b>	<b>22,673</b>	<b>22,940</b>	<b>20,259</b>	<b>23,516</b>	<b>24,970</b>	<b>16,940</b>	<b>261,619</b>	<b>22,768</b>	<b>31,277</b>	<b>25,655</b>	<b>27,893</b>	<b>24,436</b>
PERCENTAGE SHARES:														
Food and Beverages .. .. .	39.79	42.18	41.77	38.21	1,666.12	1,732.13	1,907.40	1,865.57	40.43	39.88	37.15	40.00	43.65	41.94
Industrial Supplies (Non-Food) .. .. .	24.14	23.78	28.14	27.68	1,059.14	1,129.28	1,477.20	1,216.39	25.40	25.92	25.31	26.68	24.98	26.17
Fuel and Lubricants .. .. .	6.07	2.61	2.77	5.83	132.65	140.11	93.00	68.58	3.57	1.34	5.63	1.37	1.74	1.55
Machinery and other Capital Equipment ..	1.14	1.35	1.16	1.26	100.00	100.00	100.00	100.00	1.69	1.23	2.16	2.73	2.41	2.15
Transport Equipment .. .. .	1.10	0.87	1.73	1.53	55.44	77.38	55.60	35.79	1.33	0.73	1.08	0.92	1.20	0.95
Consumer Goods not elsewhere specified	27.76	29.20	24.43	25.48	1,146.00	1,291.44	1,360.80	1,342.08	27.58	30.90	28.66	28.28	26.01	27.23
Goods not elsewhere specified .. .. .	0.00	0.00	0.00	0.00	0.62	0.38	0.00	0.00	0.00	0.00	0.00	0.02	0.00	0.00
<b>TOTAL .. .. .</b>	<b>100</b>	<b>100</b>	<b>100</b>	<b>100</b>	<b>100</b>	<b>100</b>	<b>100</b>	<b>100</b>	<b>100</b>	<b>100</b>	<b>100</b>	<b>100</b>	<b>100</b>	<b>100</b>

Source: Annual Trade Report - Customs &amp; Excise Dept.

\* Provisional

- Data being verified

Table 13 (a): Imports by Broad Economic Category

DESCRIPTION	Million KSh													
	2007									2008				
	May	June	July	August	September	October	November	December	Total	January	February	March	Apr	May
FOOD AND BEVERAGES .. .. .	2,134.00	2,993.00	6,278.00	2,965.00	2,340.00	2,649.00	2,642.00	2,888.00	<b>42,483.1</b>	3,647.00	4,797.00	5,313.00	3,662.9	2,712.5
INDUSTRIAL SUPPLIES (Non-Food) ..	16,218.00	15,528.00	16,835.00	17,865.00	16,221.00	18,169.00	18,533.00	15,449.00	<b>193,819.3</b>	20,392.00	18,137.00	14,987.00	17,444.9	15,832.1
FUEL AND LUBRICANTS .. .. .	14,603.00	12,680.00	10,268.00	10,881.00	8,702.00	16,784.00	15,706.00	3,907.00	<b>126,911.2</b>	19,602.00	13,478.00	13,135.00	15,706.1	18,042.1
MACHINERY & OTHER CAPITAL EQUIPMENT ..	9,595.00	8,189.00	8,452.00	9,390.00	8,199.00	8,933.00	9,351.00	6,286.00	<b>97,336.5</b>	9,641.00	9,796.00	10,263.00	7,651.6	8,834.4
TRANSPORT EQUIPMENT .. .. .	5,519.00	7,018.00	6,664.00	7,407.00	8,823.00	7,460.00	6,683.00	5,950.00	<b>97,427.0</b>	6,262.00	7,666.00	5,413.00	6,575.0	7,225.9
CONSUMER GOODS NOT ELSEWHERE SPECIFIED ..	3,418.00	3,308.00	3,662.00	4,071.00	3,724.00	4,900.00	4,805.00	3,273.00	<b>44,883.8</b>	4,793.00	4,176.00	4,072.00	3,738.4	4,057.6
GOODS NOT ELSEWHERE SPECIFIED	12.00	485.00	1,032.00	25.00	451.00	154.00	12.00	4.00	<b>2,259.7</b>	4.00	1.00	18.00	6.6	172.9
<b>TOTAL .. .. .</b>	<b>51,499</b>	<b>50,201</b>	<b>53,191</b>	<b>52,604</b>	<b>48,460</b>	<b>59,049</b>	<b>57,732</b>	<b>37,757</b>	<b>605,120.6</b>	<b>64,341</b>	<b>58,051</b>	<b>53,201</b>	<b>54,785</b>	<b>56,877</b>
PERCENTAGE SHARES:														
Food and Beverages .. .. .	22.24	36.55	74.28	31.58	28.54	29.65	28.25	45.94	7.02	37.83	8.26	9.99	6.69	4.77
Industrial Supplies (Non-Food) .. .. .	169.03	189.62	199.18	190.26	197.84	203.39	198.19	245.77	32.03	211.51	31.24	28.17	31.84	27.84
Fuel and Lubricants .. .. .	152.19	154.84	121.49	115.88	106.13	187.89	167.96	62.15	20.97	203.32	23.22	24.69	28.67	31.72
Machinery and other Capital Equipment ..	100.00	100.00	100.00	100.00	100.00	100.00	100.00	100.00	16.09	100.00	16.87	19.29	13.97	15.53
Transport Equipment .. .. .	57.52	85.70	78.85	78.88	107.61	83.51	71.47	94.65	16.10	64.95	13.21	10.17	12.00	12.70
Consumer Goods not elsewhere specified	35.62	40.40	43.33	43.35	45.42	54.85	51.38	52.07	7.42	49.71	7.19	7.65	6.82	7.13
Goods not elsewhere specified .. .. .	0.13	5.92	12.21	0.27	5.50	1.72	0.13	0.06	0.37	0.04	0.00	0.03	0.01	0.30
<b>TOTAL .. .. .</b>	<b>100.00</b>	<b>100.00</b>	<b>100.00</b>	<b>100.00</b>	<b>100.00</b>	<b>100.00</b>	<b>100.00</b>	<b>100.00</b>	<b>100.00</b>	<b>100.00</b>	<b>100.00</b>	<b>100.00</b>	<b>100.00</b>	<b>100.00</b>

Source: Annual Trade Report - Customs &amp; Excise Dept.

\* Provisional

- Data being verified

Table 14(a): Local Electricity Generation by Source

	Million KWh			
MONTH	HYDRO	GEO - THERMAL	THERMAL	TOTAL
<b>2007</b>				
January	320.48	68.74	137.63	526.85
February	251.87	80.98	149.52	482.37
March	299.50	86.88	148.94	535.32
April	285.09	78.27	101.44	464.80
May	307.76	84.66	144.14	536.56
June	312.04	85.22	144.64	541.90
July	297.8	88.8	152.7	539.30
August	300.8	88.2	151.8	540.82
September	297.2	79.1	150.6	526.93
October	305.2	82.3	154.3	541.80
November	307.4	85.8	147.5	540.70
December	299.6	82.2	128.7	510.50
<b>2008</b>				
January	287.8	88.9	93.5	470.23
February	276.9	78.1	100.2	455.13
March	290.2	84.6	115.1	489.96
April	280.6	87.6	122.6	490.76
May	291.9	87.2	118.4	497.49
June	252.63	87.74	122.54	462.91

\* Provisional

Source: KPL&C

Fig 9: Electricity Generation by Source

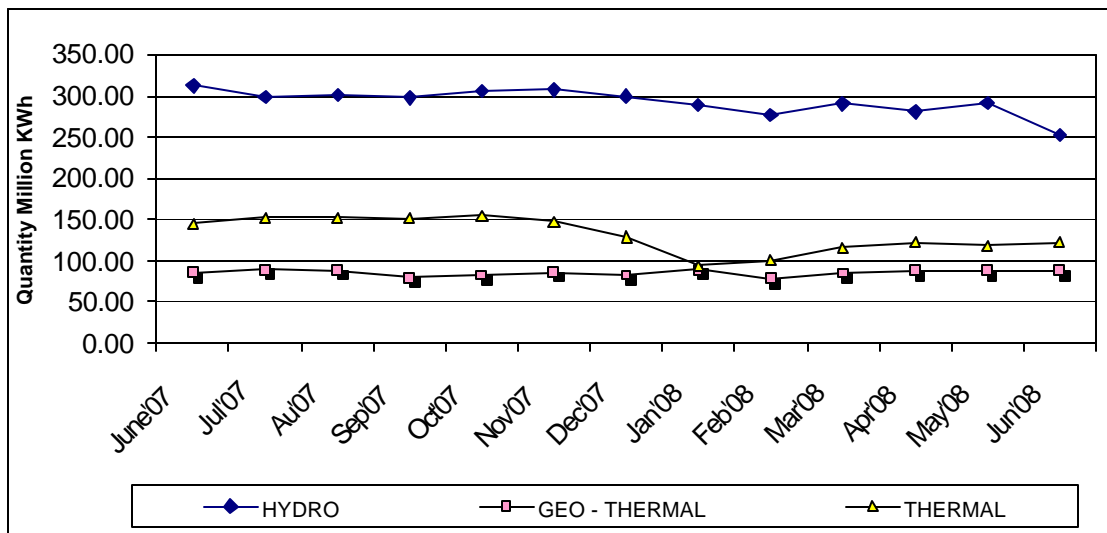


Table 14(b): Generation and Consumption of Electricity

Month	GENERATION					CONSUMPTION					
	LOCAL GENERATION	IMPORTS			EPPS (Aggreko)	TOTAL GENERATION	TOTAL KPLC SALES	RURAL ELECTRIFICATION	EXPORTS TO UGANDA	TOTAL DOMESTIC CONSUMPTION**	POWER LOSSES
		UGANDA	TANZANIA	Total Imports							
<b>2007*</b>											
June	541.9	1.60	0.04	1.7		543.6	410.6	18.40	6.04	435.0	-102.6
July	539.3	2.24	0.05	2.3	48.1	541.6	398.0	18.21	6.71	416.2	-118.7
August	540.8	1.7	0.05	1.7	45.2	542.6	420.6	19.08	3.25	439.7	-99.6
September	526.9	2.1	0.05	2.2	45.4	529.1	432.5	18.95	4.11	451.4	-73.5
October	541.8	2.3	0.05	2.4	48.0	544.2	411.8	18.89	3.33	430.7	-110.2
November	540.7	3.0	0.09	3.1	42.6	543.8	436.5	20.26	2.97	456.7	-84.1
December	510.5	2.6	0.11	2.7	34.8	513.2	398.2	17.55	3.01	415.7	-94.5
<b>2008*</b>											
January	470.2	2.6	0.11	2.7	32.5	505.4	401.3	20.60	4.39	421.9	-79.2
February	455.1	1.7	0.10	1.8	40.9	497.8	422.1	19.82	3.35	441.9	-52.6
March	490.0	1.9	0.10	2.0	40.9	532.9	397.2	19.38	3.88	416.6	-112.4
April	490.8	1.1	0.10	1.2	46.9	538.8	415.1	19.78	10.41	434.9	-93.5
May	497.5	1.6	0.11	1.7	57.7	556.6	426.5	20.48	7.95	447.0	-101.6
June	462.9	1.7	0.11	1.8	73.6	538.3	444.1	21.17	3.64	465.3	-69.4

NB: Difference between amount purchased from KENGEN and imported from Uganda and consumption reflect transmission, distribution and commercial losses

\*Provisional

\*\* Excludes exports

Fig 10: Electricity Generation Consumption and Power Losses

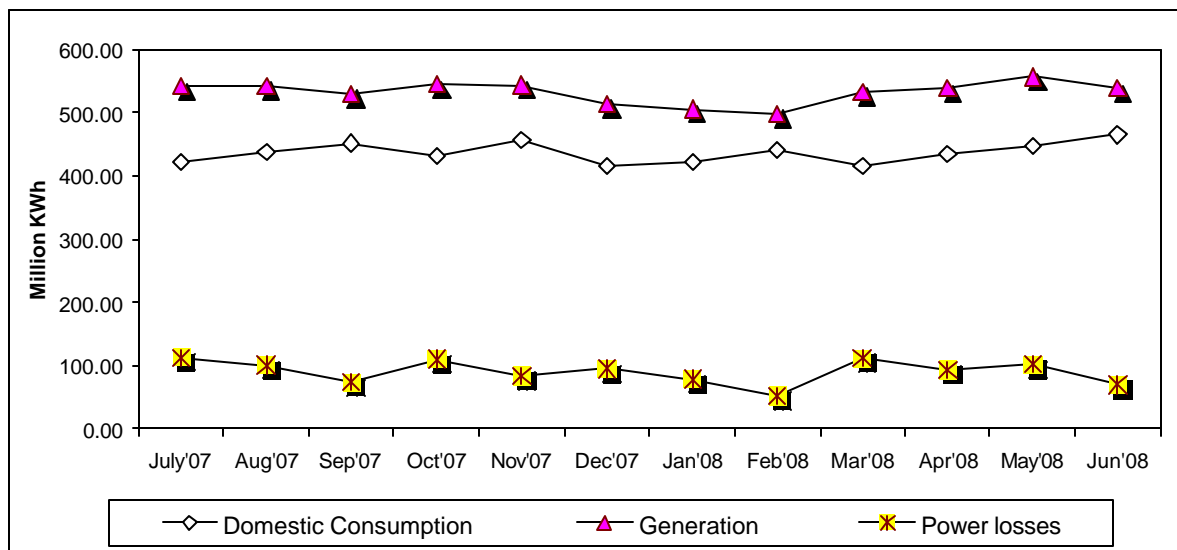


Table 14 ( c ): Consumption of Petroleum Fuels

PERIOD	'000 MT								
	LIGHT DIESEL OIL	JET FUEL	FUEL OILS	MOTOR SPIRIT	ILLUMINATING KEROSENE	HEAVY DIESEL OIL	L.P.G.	AVIATION GASLENE	TOTAL FUELS
<b>2007*</b>									
March	100.8	61.9	72.6	33.7	31.8	3.3	7.7	0.22	312.1
April	100.4	49.7	49.1	26.0	21.8	3.2	6.1	0.13	256.4
May	95.6	41.4	28.6	28.9	18.5	2.6	5.3	0.06	221.0
June	100.1	51.4	99.2	36.8	35.2	7.8	8.9	0.18	339.6
July	102.7	56.2	42.4	28.2	21.2	2.4	4.6	0.18	257.7
August	94.8	54.8	57.3	31.6	20.6	2.8	9.5	0.17	271.5
September	102.4	53.0	44.5	37.5	19.0	3.8	8.5	0.16	268.8
October	87.0	55.3	57.1	31.1	21.6	2.2	5.4	0.17	259.8
November	73.0	53.7	39.3	27.5	15.0	2.0	4.1	0.15	214.8
December	96.9	56.2	55.3	33.7	24.8	3.2	6.2	0.39	276.8
<b>2008*</b>									
January	76.4	47.8	37.0	27.9	17.6	2.0	6.5	0.19	215.3
February	82.4	45.1	39.4	27.0	17.8	2.2	5.1	0.11	219.1
March	87.4	46.6	43.9	28.7	16.6	3.0	4.7	0.14	231.1
April**	92.2	48.6	45.5	27.2	18.8	2.3	5.4	0.12	240.1
May**	85.8	43.8	47.9	28.0	15.5	2.9	4.6	0.14	228.7

**Source : Ministry of Energy**

\* Sales from major oil marketing firms only

- data not available

+ Data from other Key firms not included

\*\*Provisional

Table 14 (d): Weighted Average Retail Prices for Selected Fuel Products within Nairobi

PERIOD	KSh per litre			
	MOTOR GASOLINE PREMIUM	MOTOR GASOLINE REGULAR	LIGHT DIESEL OIL (GASOIL)	ILLUMINATING KEROSENE
May-07	79.48	78.71	69.58	57.76
Jun-07	79.91	79.18	69.95	57.89
Jul-07	80.52	79.78	70.52	57.92
Aug-07	80.92	80.06	70.36	58.58
Sep-07	81.79	80.67	71.33	59.01
Oct-07	83.65	82.14	73.18	60.58
Nov-07	84.82	82.63	75.07	61.73
Dec-07	85.18	82.77	75.36	62.79
Jan-08	88.57	86.57	78.40	66.77
Feb-08	90.49	88.23	80.31	68.90
Mar-08	93.40	90.52	82.79	68.77
Apr-08	95.96	92.63	85.62	71.27
May-08	96.87	95.15	87.91	71.74
Jun-08	102.34	98.74	95.70	78.87

Source : Kenya National Bureau of Statistics

Fig 11(a): Average Retail Prices of selected Petroleum Products

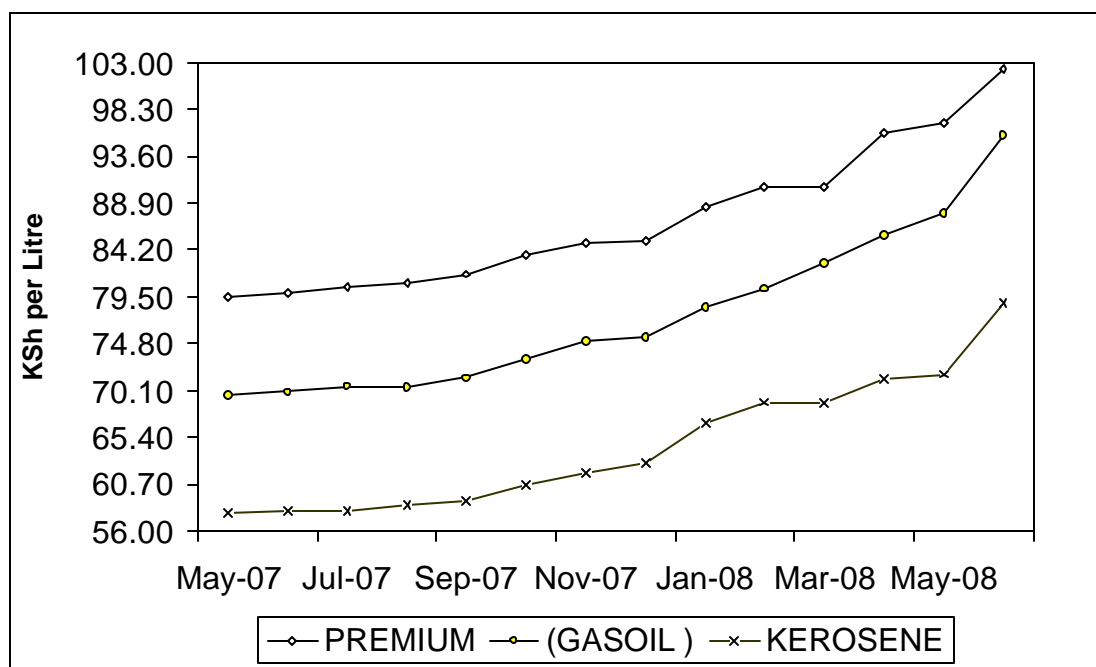


Table 14 (e): Weighted Average Retail Prices for Selected Fuels in Kenya

PERIOD	MOTOR GASOLINE PREMIUM (KSh Per Litre)	MOTOR GASOLINE REGULAR (KSh per Litre)	LIGHT DIESEL OIL, GASOIL (KSh per Litre)	ILLUMINATING KEROSENE (KSh per Litre)	L.P.G (KSh per 13Kg)	Charcoal (KSh per 4 Kg Tin)
Jan-07	78.49	78.15	67.00	56.75	1,608.19	31.63
Feb-07	77.83	77.62	66.42	56.14	1,609.71	31.40
Mar-07	77.71	77.52	66.01	55.99	1,603.60	31.07
Apr-07	78.40	77.84	67.09	56.13	1,593.32	30.95
May-07	79.18	78.57	67.72	56.97	1,597.10	32.31
Jun-07	79.45	78.97	68.21	57.21	1,590.73	32.88
Jul-07	79.74	79.16	68.15	57.32	1,642.20	33.02
Aug-07	80.00	79.48	68.17	57.58	1,655.85	33.21
Sep-07	80.10	79.02	68.43	57.58	1,671.63	34.08
Oct-07	82.11	80.75	71.14	58.60	1,633.21	32.85
Nov-07	83.43	82.05	72.74	59.66	1,671.54	32.72
Dec-07	84.50	82.75	73.95	60.82	1,705.76	32.61
Jan-08	88.04	86.10	77.69	64.37	1,735.70	34.79
Feb-08	89.99	88.18	80.17	66.66	1,769.35	35.08
Mar-08	91.63	89.99	81.63	66.94	1,783.63	34.99
Apr-08	94.32	92.71	84.49	68.81	1,785.46	34.91
May-08	98.60	94.96	88.51	74.30	1,797.90	35.50
Jun-08	100.43	98.73	93.18	75.45	-	-

Source : Kenya National Bureau of Statistics

Fig 11(b): Weighted Average Prices for LPG in Kenya

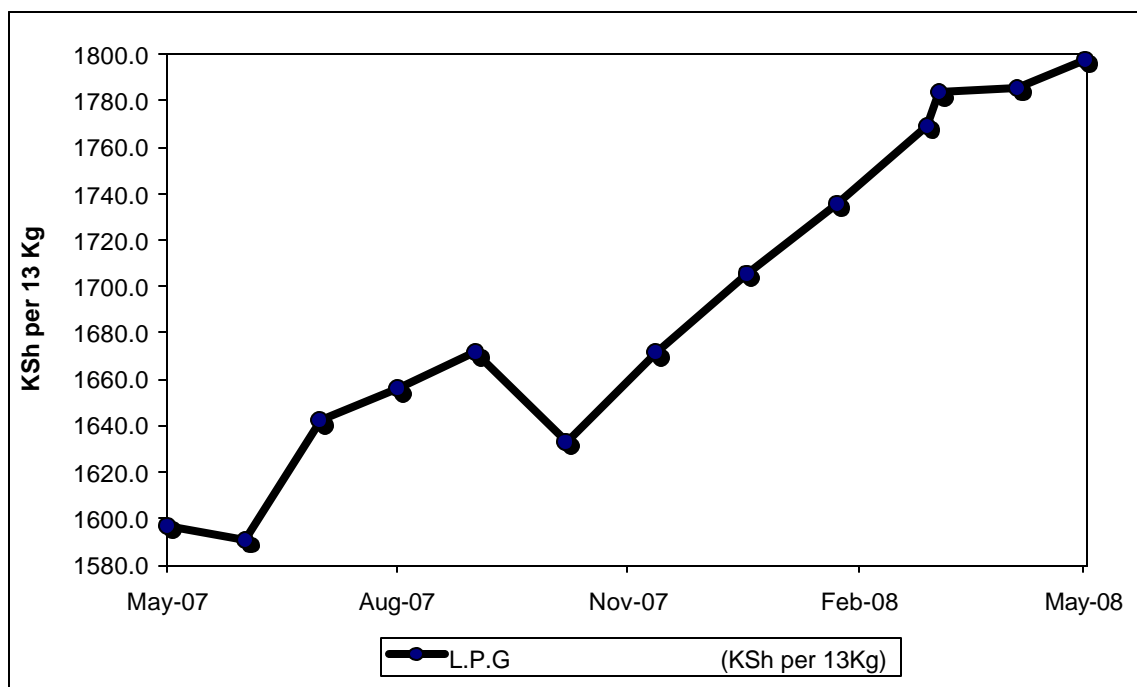


Table 14(f): Murban ADNOC Prices 2003-2008

US\$BBL						
Month/Year	2003	2004	2005	2006	2007	2008*
January	29.60	31.05	42.10	62.15	54.85	92.25
February	31.70	30.90	44.00	60.95	58.75	95.10
March	29.10	33.15	50.95	60.85	62.10	102.20
April	25.00	33.80	52.55	67.50	67.60	109.35
May	25.85	37.05	49.80	68.50	68.40	125.75
June	26.80	35.95	55.45	68.85	69.70	134.00
July	27.75	37.35	57.10	73.00	73.70	
August	28.85	41.55	60.95	72.70	71.75	
September	26.95	41.39	61.05	63.25	78.55	
October	29.10	42.80	58.00	59.35	81.80	
November	29.60	39.65	54.95	59.70	91.75	
December	30.05	38.50	56.90	62.05	90.60	

Source : Ministry of Energy

\* Provisional

ADNOC : Abu Dhabi National Oil Corporation

PRICE : Abu Dhabi Free On Board (FOB)

US\$/BBL: US Dollar per Barrel

Fig 12: Trend for Murban ADNOC Crude Oil Prices

### ADNOC crude oil prices

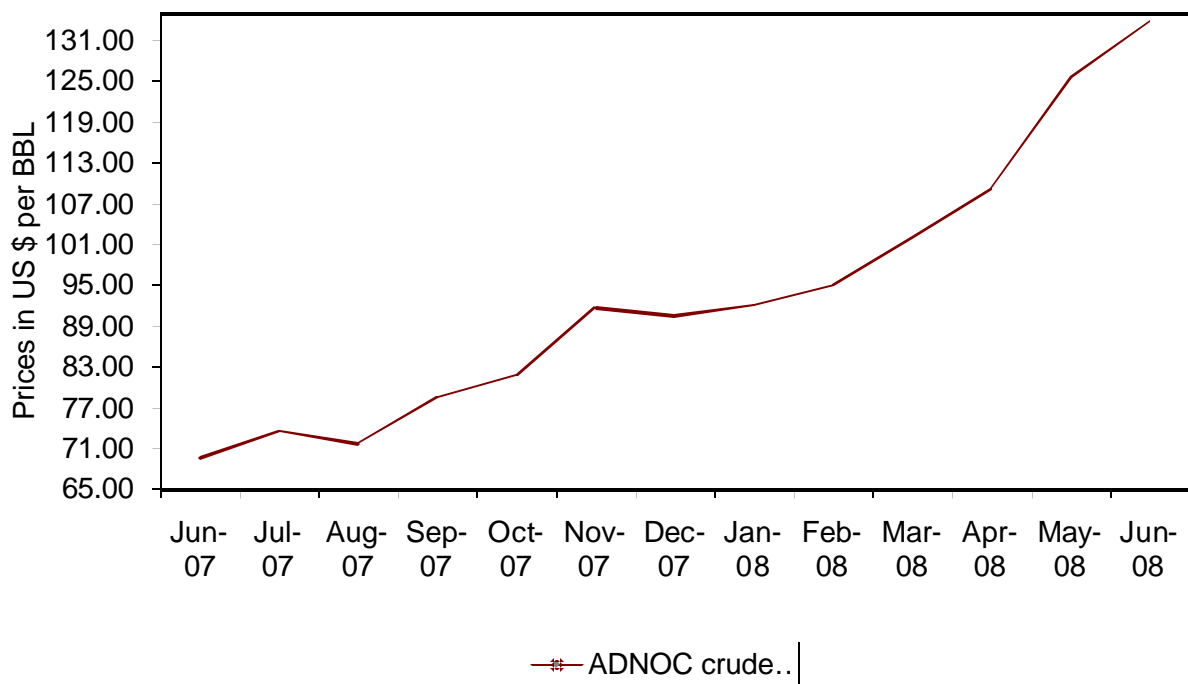


Table 15: Value of Building Plans Approved by Nairobi City Council (NCC)

MONTHS	ACTUAL			REAL**		
	RESIDENTIAL	NON RESIDENTIAL	AGGREGATE ACTUAL	RESIDENTIAL	NON RESIDENTIAL	REAL AGGREGATE
<b>2007</b>						
January	4,339.6	2,405.1	6,744.6	92.3	48.7	141.0
February	2,142.3	672.7	2,815.0	13.6	58.5	72.1
March	3,056.8	1,372.0	4,428.8	65.0	27.8	92.8
April	3,379.4	5,808.3	9,187.7	71.9	117.6	189.5
May	2,588.5	985.8	3,574.3	55.1	20.0	75.0
June	2,405.0	2,215.6	4,620.6	51.2	44.9	96.0
July	2,181.9	2,270.1	4,452.0	46.4	46.0	92.4
Aug	1,660.9	1,459.9	3,120.8	35.3	29.6	64.9
Sep	2,556.2	1,514.4	4,070.6	52.1	29.4	81.5
Oct	6,214.1	2,764.2	8,978.2	126.7	53.7	180.4
November	2,959.5	3,125.3	6,084.8	60.4	60.7	121.3
December	2,721.4	963.3	3,684.8	55.5	18.7	73.4
<b>2008</b>						
January	2,355.3	1,968.5	4,323.8	43.8	34.9	78.7
February	2,496.4	1,525.4	4,021.8	46.4	27.1	73.5
March	1,496.1	2,916.8	4,412.9	27.8	51.7	79.5
April	3,249.1	2,962.9	4,021.8	60.4	52.6	112.9
May	1,683.6	2,810.7	4,021.8	31.3	49.9	81.1

Source: Nairobi City Council

\* Provisional

†: NCC Approval committee did not meet to approve new plans

\*\* Actual deflated by relevant construction cost indices ( Dec1972 =100)

- data not available

Table 16(a): Domestic Production of Sugar

Month	Metric Tonnes							
	2001	2002	2003**	2004	2005	2006*	2007*	2008*
January	28,291	48,300	37,923	49,186	48,993	47,596	42,188	37,598
February	30,308	39,479	39,709	48,708	41,929	44,823	41,246	49,604
March	36,110	39,479	22,881	46,827	40,192	51,327	45,933	40,579
April	33,148	41,105	17,879	43,123	42,988	41,055	47,255	38,968
May	24,731	18,744	34,954	37,583	40,869	39,849	45,427	50,865
June	35,683	44,581	39,144	28,069	29,076	34,985	36,870	
July	25,695	50,184	31,878	36,824	27,995	30,985	37,496	
August	19,015	45,895	40,106	41,622	41,585	47,002	44,898	
September	37,058	48,752	48,302	45,438	39,003	35,173	44,396	
October	37,355	44,573	48,939	45,530	45,810	35,102	48,849	
November	29,311	35,609	43,037	45,107	42,493	34,265	44,155	
December	40,733	37,923	43,768	48,738	48,069	33,509	41,691	
<b>Total</b>	<b>377,438</b>	<b>494,624</b>	<b>448,520</b>	<b>516,755</b>	<b>489,002</b>	<b>475,671</b>	<b>520,404</b>	

\*Provisional

\*\* Revised based on Kenya Sugar Board figures.

Source: Kenya Sugar Authority

**TABLE 16(b): PRODUCTION OF SOFT DRINKS**

Month	Metric Tonnes							
	2001	2002	2003	2004	2005	2006*	2007*	2008*
January	28,889	38,553	51,676	17,162	22,025	32,548	28,835	24,519
February	17,270	18,547	19,540	12,692	22,895	26,470	27,484	22,653
March	17,721	17,558	17,353	17,650	27,395	27,538	31,120	29,446
April	13,798	14,096	15,970	10,596	18,196	19,542	26,411	
May	11,288	11,698	13,514	12,509	17,308	20,406	26,148	
June	11,840	13,917	15,109	19,776	18,513	22,682	22,852	
July	7,981	6,947	6,266	13,828	19,044	17,568	20,508	
August	10,136	10,486	10,784	12,722	15,367	20,095	21,402	
September	8,180	7,842	6,709	18,768	19,950	20,127	25,899	
October	11,042	9,980	9,102	13,863	21,965	23,774	40,067	
November	12,781	12,354	11,977	11,813	26,881	20,689	27,177	
December	19,612	20,521	22,989	14,542	27,485	27,968	30,329	
<b>Total</b>	<b>170,538</b>	<b>182,499</b>	<b>200,989</b>	<b>175,921</b>	<b>257,024</b>	<b>279,407</b>	<b>328,231</b>	

**Source : Kenya National Bureau of Statistics**

- data not available

\*Provisional

Table 16(c): Production of Assembled Vehicles

Month	Numbers			
	2005	2006*	2007*	2008*
January	322	360	450	468
February	641	411	516	592
March	579	461	565	388
April	553	436	532	601
May	489	486	574	
June	448	399	481	
July	507	439	456	
August	439	480	589	
September	423	477	566	
October	341	447	718	
November	322	592	658	
December	335	392	437	
<b>Total</b>	<b>5,399</b>	<b>5,380</b>	<b>6,542</b>	

\*Provisional

TABLE 16(d): PRODUCTION OF GALVANISED SHEETS

Month	Metric Tonnes			
	2005	2006	2007	2008
January	12,203	13,520	13,515	16,240
February	11,491	12,765	15,365	16,912
March	10,679	12,736	16,920	15,498
April	10,439	13,138	15,855	15,396
May	15,952	13,754	14,816	
June	15,085	13,946	16,404	
July	13,596	15,695	15,674	
August	14,806	15,180	15,921	
September	17,536	13,927	15,877	
October	15,837	13,619	16,611	
November	15,544	15,552	15,372	
December	15,950	14,914	15,930	
<b>Total</b>	<b>169,118</b>	<b>168,746</b>	<b>188,260</b>	

Source : Kenya National Bureau of Statistics

- data not available

\*Provisional

Table 16(e): Cement production and Consumption

MONTHS	2006		2007*		2008*	
	PRODUCTION	CONSUMPTION	PRODUCTION	CONSUMPTION	PRODUCTION	CONSUMPTION
January	161,701	136,601	196,464	132,765	17,476	155,664
February	158,364	129,892	178,706	128,356	17,619	176,538
March	164,533	145,723	215,477	162,057	17,326	187,427
April	167,015	130,696	198,779	160,414		
May	173,367	137,022	214,333	176,117		
June	179,889	148,516	198,002	161,060		
July	191,968	148,648	236,597	188,144		
August	186,962	160,361	235,786	189,047		
September	180,924	151,012	235,088	188,811		
October	212,101	172,258	206,289	178,682		
November	202,101	163,825	221,484	197,183		
December	195,165	141,260	208,656	158,017		
<b>TOTAL</b>	<b>2,174,090</b>	<b>1,765,814</b>	<b>2,545,660</b>	<b>2,020,653</b>		

- data not available

Source: Kenya National Bureau of Statistics

\*Provisional

-: data not available

Table 16F: Milk Intakes in the Formal Milk Sector.

litres				
Month	2005	2006	2007	2008
Jan	25,843,184	28,993,210	35,997,997	28,596,999
Feb	25,233,962	25,445,275	37,508,095	26,527,462
Mar	24,245,260	21,142,657	34,608,329	26,885,445
Apr	22,271,673	23,285,252	33,286,207	
May	25,260,095	29,773,451	30,038,560	
Jun	27,742,995	34,032,057	33,092,547	
Jul	32,972,254	33,304,057	33,147,783	
Aug	31,841,004	32,658,519	36,022,269	
Sept	30,935,673	32,159,974	35,186,438	
Oct	30,945,573	32,236,110	37,988,733	
Nov	32,229,310	33,925,921	39,840,842	
Dec	30,013,714	33,192,254	36,393,069	
<b>Total</b>	<b>339,534,696</b>	<b>360,148,736</b>	<b>423,110,869</b>	

Source: Kenya Dairy Board

FIG 13: Milk Intake in the Informal Sector

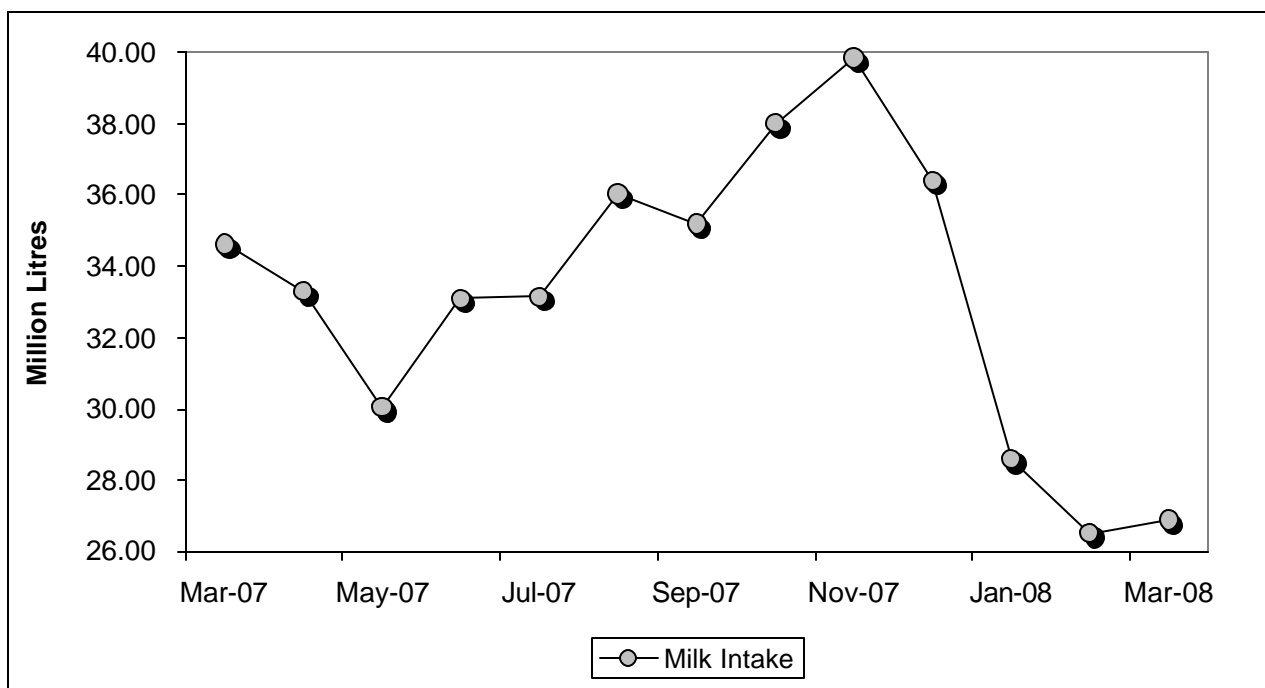


Table 17: Visitor Arrivals\* through Jomo Kenyatta International Airport (J.K.I.A) and Moi International Airport (M.I.A)

MONTH	AIRPORT		Numbers
	JKIA	MIA	Visitors to Kenya
<b>Total 2006</b>	<b>684,475</b>	<b>261,773</b>	<b>946,248</b>
<b>2007</b>			
January	65,949	33,653	99,602
February	55,787	30,940	86,727
March	58,924	26,933	85,857
April	50,960	15,282	66,242
May	51,647	10,287	61,934
June	63,877	10,967	74,844
July	80,025	21,963	101,988
August	82,487	26,916	109,403
September	70,160	22,810	92,970
October	66,954	24,127	91,081
November	55,701	23,210	78,911
December	67,126	29,210	96,336
<b>Total 2007</b>	<b>1,386,946</b>	<b>508,861</b>	<b>1,895,807</b>
<b>2008</b>			
January	46,464	8,906	55,370
February	30,231	6,739	36,970
March	40,770	5,106	45,876
April	40,686	2,063	42,749

\* Visitors arrivals exclude Kenyans

\*\*Provisional

FIG 14: VISITORS ARRIVING IN KENYA THROUGH THE MAIN AIRPORTS

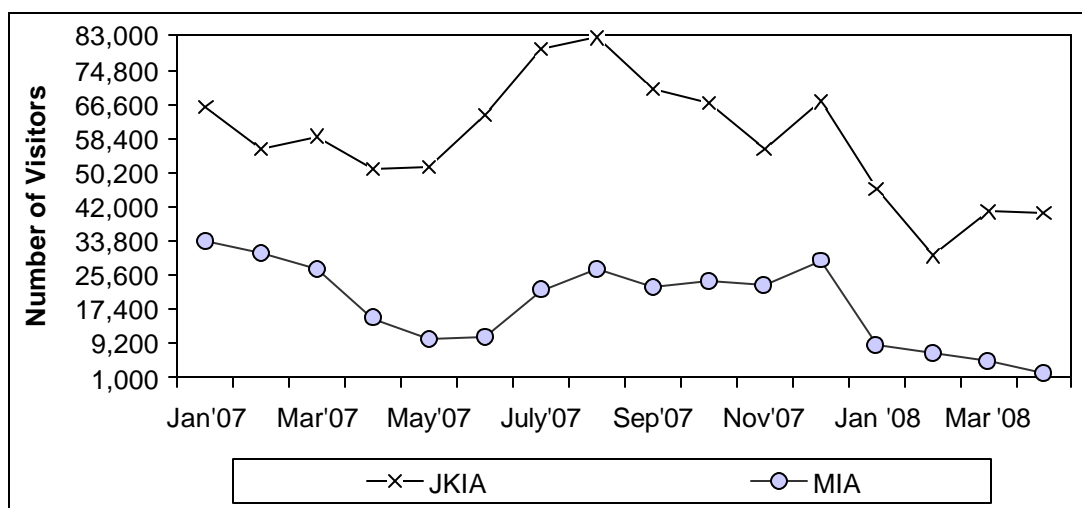


TABLE (18A): JOMO KENYATTA INT. AIRPORT INTERNATIONAL FLIGHTS ONLY- EMBARKED PASSENGERS BY PORT OF DESTINATION.

PORTS.	2007										2008		
	Apr	May	June	July	Aug	Sep	Oct	Nov	Dec	TOTAL	Jan	Feb	Mar
ADDIS ABABA (ADD)	2,759	3,018	4,403	4,029	3,888	782	5,354	3,959	6,190	45,260	719	3,975	635
CAIRO (CAI)	1,376	917	1,077	3,008	3,088	2,904	3,530	2,529	1,201	26,195	902	1,367	1,860
DAR ES SALAAM (DAR)	6,308	5,588	7,508	7,333	9,868	8,294	7,347	6,378	6,373	82,939	5,278	5,667	6,300
ENTEBBE (EBB)	10,346	10,319	11,236	9,369	11,824	10,989	9,816	10,297	9,375	119,541	9,143	8,767	10,505
HARARE (HRE)	1,692	1,389	1,174	881	1,371	1,324	1,140	2,024	1,635	16,880	1,223	1,148	1,556
JOHANNESBURG (JNB)	9,643	8,701	9,121	9,782	10,291	6,889	9,868	12,982	9,998	116,178	8,672	6,645	6,168
<b>TOTAL AFRICA</b>	<b>32,124</b>	<b>29,932</b>	<b>34,519</b>	<b>34,402</b>	<b>40,330</b>	<b>31,182</b>	<b>37,055</b>	<b>38,169</b>	<b>34,772</b>	<b>406,993</b>	<b>25,937</b>	<b>27,569</b>	<b>27,024</b>
BOMBAY (BOM)	3,890	6,329	7,091	6,995	5,878	6,084	6,827	8,371	6,732	73,691	1,019	4,821	662
DUBAI (DXB)	6,676	6,871	5,977	10,424	9,028	6,465	6,301	17,235	17,780	122,115	13,866	5,729	15,580
JEDAH (JED)	1,451	0	1,096	717	2,432	1,429	0	472	0	8,130	0	256	264
KARACHI (KHI)	-	-	0	0	0	0	0	0	0	0	0	0	0
MUSCAT (MCT)	-	-	-	-	-	0	-	0	0	0	0	0	0
OTHERS													
<b>TOTAL ASIA</b>	<b>12,017</b>	<b>13,200</b>	<b>14,164</b>	<b>18,136</b>	<b>17,338</b>	<b>13,978</b>	<b>13,128</b>	<b>26,078</b>	<b>24,512</b>	<b>203,936</b>	<b>14,885</b>	<b>10,806</b>	<b>16,506</b>
AMSTERDAM (AMS)	11,700	11,268	13,330	17,218	22,088	18,590	16,183	15,311	2,632	176,803	3,950	2,357	2,703
BRUSSELS (BRU)	866	850	1,885	2,555	3,831	2,537	1,825	2,092	2,069	29,563	1,345	1,003	0
LONDON (LON)	6,677	6,355	17,848	21,103	23,395	20,119	16,896	14,155	11,862	195,780	14,002	7,252	10,247
PARIS-(CDG) & (PAR)	1,022	739	1,617	-	3,005	2,718	1,368	1,721	1,718	19,034	1,248	565	-
ROME (ROM) <sup>z</sup>	-	141	-	-	-	-	-	-	-	-	-	-	-
ZURICH (ZRH)	1,603	1,732	4,338	472	2,152	2,482	2,408	2,054	2,137	27,288	3,695	3,558	0
<b>TOTAL EUROPE</b>	<b>21,868</b>	<b>21,085</b>	<b>39,018</b>	<b>41,348</b>	<b>54,471</b>	<b>46,446</b>	<b>38,680</b>	<b>35,333</b>	<b>20,418</b>	<b>448,468</b>	<b>24,240</b>	<b>14,735</b>	<b>12,950</b>
<b>TOTAL OTHERS**</b>	<b>32,141</b>	<b>34,230</b>	<b>30,267</b>	<b>34,277</b>	<b>41,690</b>	<b>42,147</b>	<b>37,619</b>	<b>38,429</b>	<b>34,060</b>	<b>428,639</b>	<b>28,017</b>	<b>35,556</b>	<b>69,894</b>
<b>GRAND TOTAL</b>	<b>98,150</b>	<b>98,447</b>	<b>117,968</b>	<b>128,163</b>	<b>153,829</b>	<b>133,753</b>	<b>126,482</b>	<b>138,009</b>	<b>113,762</b>	<b>1,488,177</b>	<b>93,079</b>	<b>88,666</b>	<b>126,374</b>

Source : Kenya National Bureau of Statistics

- no passengers embarked

FIG 15: J.K.I.A. PASSENGERS BY REGION OF DESTINATION

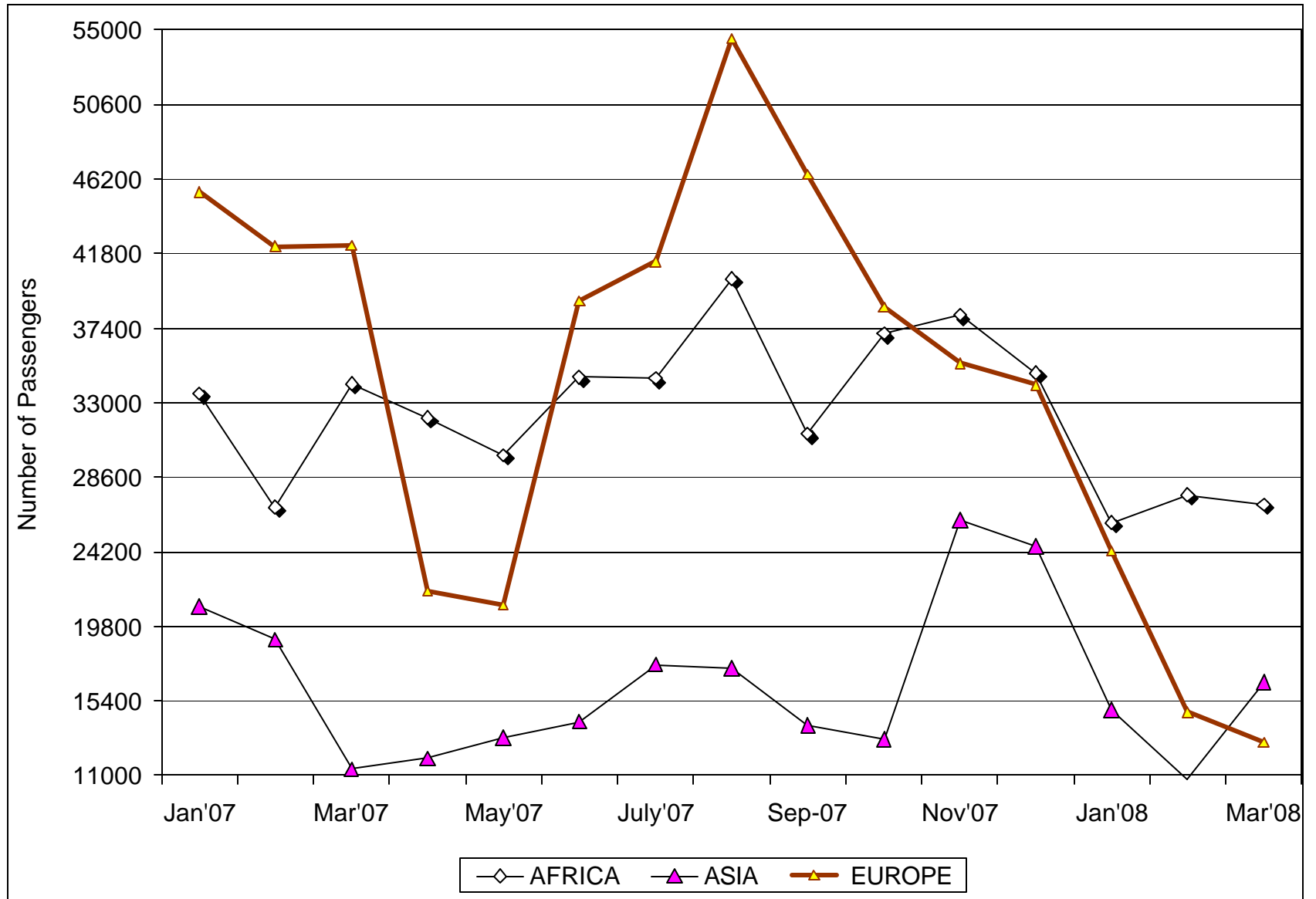


TABLE (18B): JOMO KENYATTA INT. AIRPORT INTERNATIONAL FLIGHTS ONLY- LANDED PASSENGERS BY PORT OF DESTINATION.

PORTS	2007										2008		
	Apr	May	June	July	Aug	Sep	Oct	Nov	Dec	TOTAL	Jan	Feb	Mar
<b>ADDIS ABABA (ADD)</b>	4,255	4,225	3,127	4,154	3,912	796	4,493	4,428	2,812	<b>42,261</b>	858	3,232	891
<b>CAIRO (CAI)</b>	1,347	1,853	1,064	2,031	2,884	1,122	2,360	2,190	1,451	<b>23,824</b>	1,184	1,202	1,592
<b>DAR ES SALAAM (DAR)</b>	6,809	6,088	7,746	5,418	10,859	8,328	9,242	6,664	5,816	<b>85,689</b>	5,553	6,770	6,334
<b>ENTEBBE (EBB)</b>	10,576	10,916	10,776	9,484	12,104	10,285	9,677	10,288	9,177	<b>118,612</b>	8,756	8,591	10,461
<b>HARARE (HRE)</b>	1,696	1,278	1,137	1,029	1,242	1,520	1,043	1,308	1,303	<b>15,555</b>	1,155	1,016	1,052
<b>JOHANNESBURG (JNB)</b>	9,182	8,969	9,790	8,925	10,088	6,740	8,973	10,120	10,733	<b>107,676</b>	7,148	5,527	5,729
<b>TOTAL AFRICA</b>	<b>33,865</b>	<b>33,329</b>	<b>33,640</b>	<b>31,041</b>	<b>41,089</b>	<b>28,791</b>	<b>35,788</b>	<b>34,998</b>	<b>31,292</b>	<b>393,617</b>	<b>24,654</b>	<b>26,338</b>	<b>26,059</b>
<b>BOMBAY (BOM)</b>	5,314	4,739	5,058	5,496	7,098	6,391	3,983	5,964	0	<b>70,627</b>	1,616	1,121	1,097
<b>DUBAI (DXB)</b>	6,545	6,294	7,676	11,256	8,026	5,845	6,199	15,600	17,210	<b>118,377</b>	14,215	5,395	14,699
<b>JEDAH (JED)</b>	1,204	0	1,062	307	1,546	250	0	195	0	<b>6,906</b>	0	165	262
<b>KARACHI (KHI)</b>	-	0	0	0	0	0	0	0	0	<b>0</b>	0	0	0
<b>MUSCAT (MCT)</b>	-	0	0	0	0	0	0	0	0	<b>-</b>	0	0	0
<b>TOTAL ASIA</b>	<b>13,063</b>	<b>11,033</b>	<b>13,796</b>	<b>17,059</b>	<b>16,670</b>	<b>12,486</b>	<b>10,182</b>	<b>21,759</b>	<b>17,210</b>	<b>195,910</b>	<b>15,831</b>	<b>6,681</b>	<b>16,058</b>
<b>AMSTERDAM (AMS)</b>	13,057	10,439	16,877	16,675	19,663	19,273	18,230	14,537	7,605	<b>183,515</b>	5,355	5,294	5,994
<b>BRUSSELS (BRU)</b>	1,390	2,036	1,630	1,779	1,412	1,674	1,985	1,158	1,926	<b>19,720</b>	767	600	0
<b>LONDON (LON)</b>	8,592	5,822	20,130	18,688	20,698	18,885	20,208	12,384	15,233	<b>189,493</b>	8,948	6,201	9,284
<b>PARIS-(CDG)&amp;( PAR)</b>	1,413	793	1,357	-	2,430	1,511	2,003	1,544	2,096	<b>17,293</b>	639	584	0
<b>ROME (ROM) Z</b>	0	232	0	0	0	0	0	0	0	<b>-</b>	0	0	0
<b>ZURICH (ZRH)</b>	2,839	3,342	2,097	524	2,246	2,528	0	1,996	2,307	<b>25,579</b>	1,521	1,099	0
<b>TOTAL(EUROPE)</b>	<b>27,291</b>	<b>22,664</b>	<b>42,091</b>	<b>37,666</b>	<b>46,449</b>	<b>43,871</b>	<b>42,426</b>	<b>31,619</b>	<b>29,167</b>	<b>435,600</b>	<b>17,230</b>	<b>13,778</b>	<b>15,278</b>
<b>OTHERS(TOTAL) **</b>	32,671	36,393	29,918	31,075	44,688	44,322	41,291	40,036	38,133	<b>445,935</b>	25,996	30,007	72,017
<b>GRAND TOTAL</b>	<b>106,890</b>	<b>103,419</b>	<b>119,445</b>	<b>116,841</b>	<b>148,896</b>	<b>129,470</b>	<b>129,687</b>	<b>128,412</b>	<b>115,802</b>	<b>1,471,062</b>	<b>83,711</b>	<b>76,804</b>	<b>129,412</b>

Source : Kenya National Bureau of Statistics

- no passengers landed

\* Provisional

\*\* Ports not listed

z Includes all planes from Italy

FIG 16: J.K.I.A. PASSENGERS BY REGION OF ORIGIN

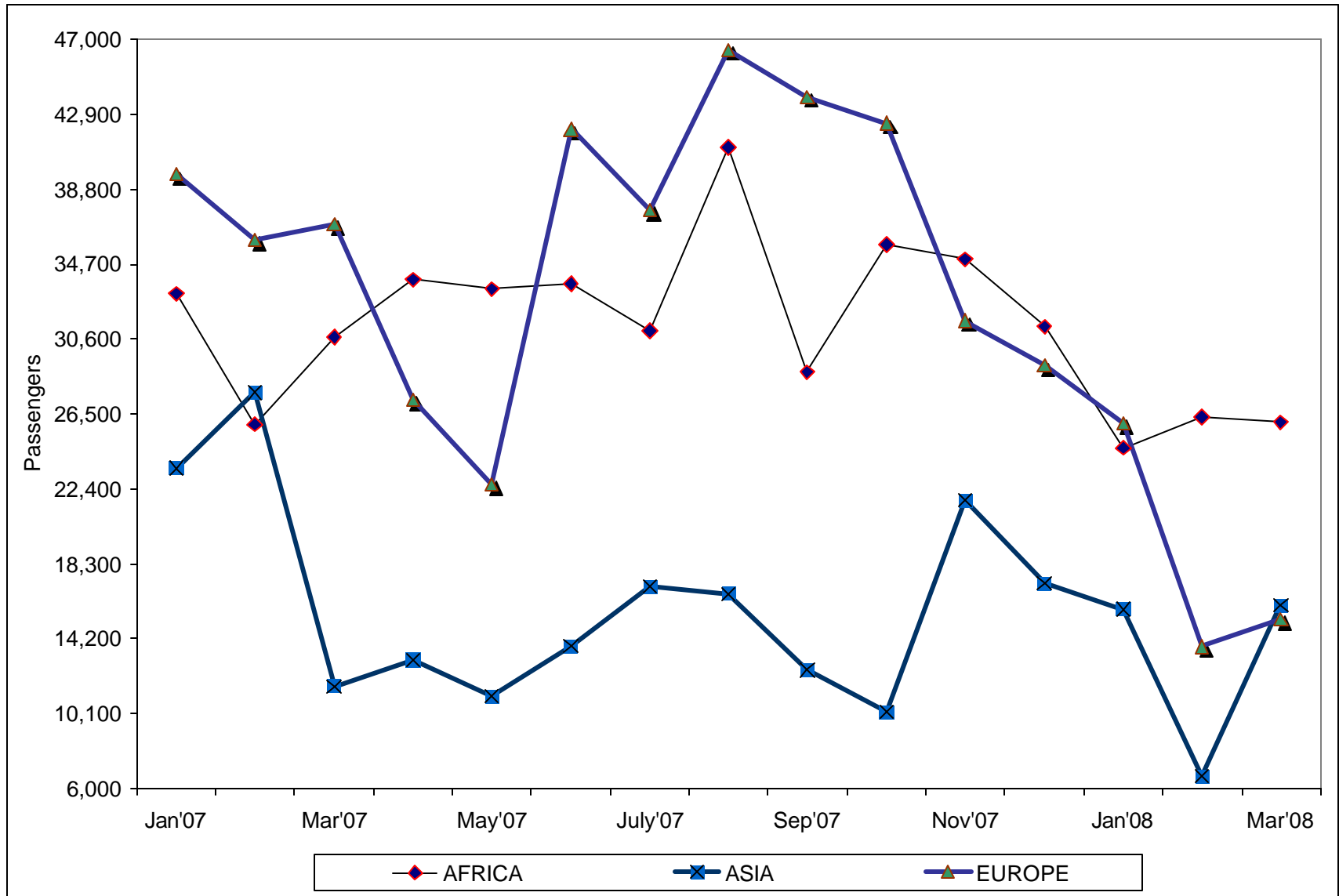


Table 18 C: New Vehicle Registration

<i>Body Type/Month</i>	2007										2008			
	<i>April</i>	<i>May</i>	<i>June</i>	<i>July</i>	<i>Aug</i>	<i>Sep</i>	<i>Oct</i>	<i>Nov</i>	<i>Dec</i>	<i>Cumulative 2007</i>	<i>Jan</i>	<i>Feb</i>	<i>Mar</i>	<i>Apr</i>
Saloons	1,316	1,301	1,094	1,627	1,710	1,824	2,057	1,721	1,096	<b>17,893</b>	1,876	1,065	830	1,272
St,Wagon	1,656	1,790	1,900	2,191	2,560	2,476	2,905	2,649	1,406	<b>24,115</b>	2,702	1,553	1,299	1,839
Vans,P/Ups,etc	667	885	660	874	795	778	883	877	696	<b>9,470</b>	601	706	566	877
M/Buses	293	406	406	377	464	430	598	84	503	<b>4,252</b>	427	452	435	559
Buses	71	151	103	140	110	120	132	714	170	<b>2,006</b>	83	61	82	97
Lorries	411	708	513	558	629	492	625	633	471	<b>6,329</b>	409	462	541	658
Trailers	142	265	197	216	210	197	236	178	144	<b>2,193</b>	177	134	184	182
Motors Cycles	935	2,457	1,321	1,114	1,366	1,497	1,353	2,165	826	<b>16,293</b>	1,740	1,982	1,904	3,840
3 Whellers	110	83	100	77	90	63	112	112	15	<b>1,072</b>	63	48	75	30
Wheeled tractor	87	112	113	125	83	91	102	154	55	<b>1,213</b>	87	121	85	133
Others	25	54	44	70	89	41	43	32	13	<b>488</b>	27	45	43	52
<b>TOTAL</b>	<b>5,713</b>	<b>8,212</b>	<b>6,451</b>	<b>7,369</b>	<b>8,106</b>	<b>8,009</b>	<b>9,046</b>	<b>9,319</b>	<b>5,395</b>	<b>85,324</b>	<b>8,192</b>	<b>6,629</b>	<b>6,044</b>	<b>9,539</b>

Source : Kenya National Bureau of Statistics

\* Provisional

- Not specified