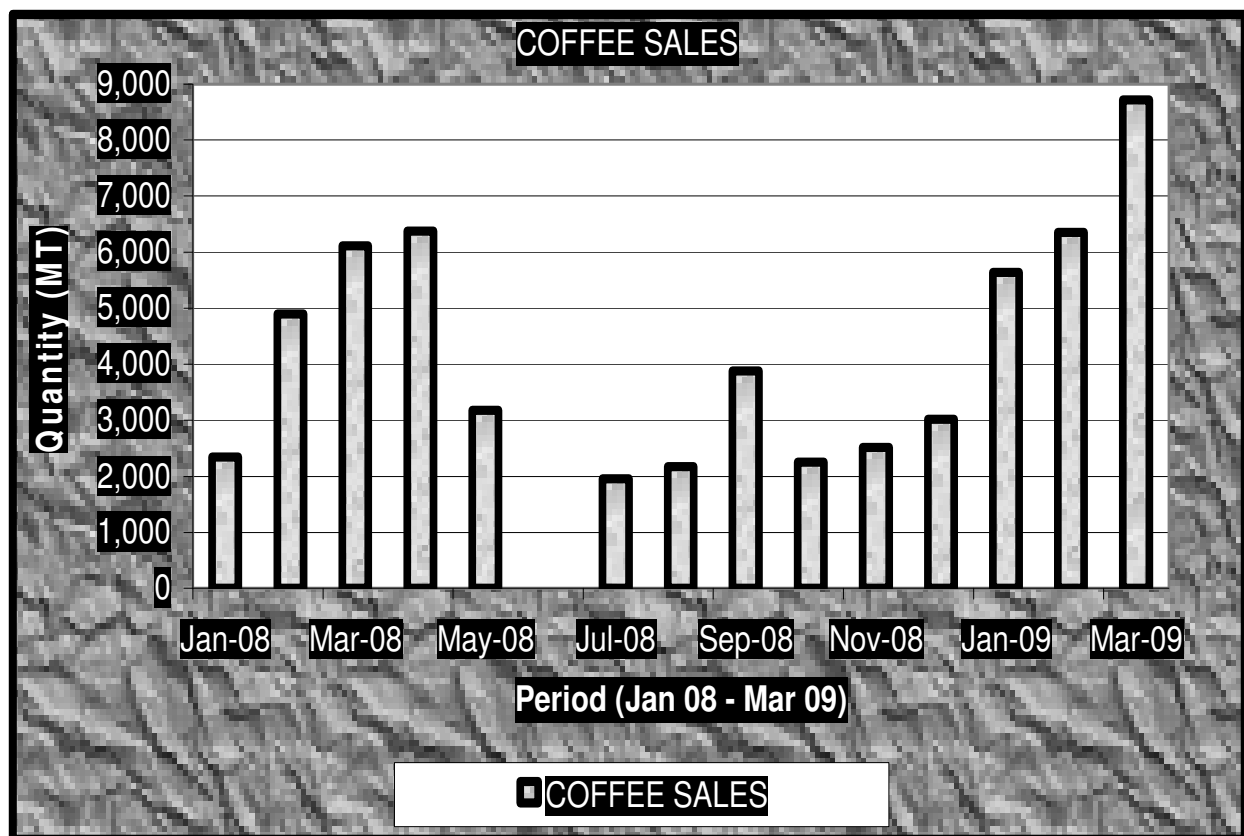


LEADING ECONOMIC INDICATORS



KENYA NATIONAL BUREAU OF STATISTICS

P.O. Box 30266- 00100 Nairobi
Website: www.knbs.go.ke

Tel: 317586/88, 317612/22 Fax: 315977
email: director@knbs.go.ke

APRIL 2009

TABLE OF CONTENTS

MACRO ECONOMIC STATISTICS

Key highlights on Leading Economic Indicators	iii
TABLE 1: KENYA CONSUMER PRICE INDICES AND INFLATION RATE.....	9
TABLE 2: MEAN FOREIGN EXCHANGE RATES OF KENYA SHILLINGS AGAINST SELECTED MAJOR CURRENCIES AT THE END OF THE MONTH.....	11
Table 3: Interest Rates (%).....	13
TABLE 4: CAPITAL MARKETS – NAIROBI STOCK EXCHANGE.....	14
TABLE 5 (a): MONEY SUPPLY	15
TABLE 5b: FOREIGN EXCHANGE RESERVES	17

AGRICULTURE

TABLE 6: COFFEE SALES AND PRICES	18
TABLE 7: TEA PRODUCTION AND PRICES*	19
Table 8(a): AVERAGE MONTHLY RETAIL PRICES FOR DRY MAIZE IN THE YEAR-2007.....	20
Table 8(b): Average Monthly Retail Prices for Dry Maize in the Year 2008	21
Table 8(c): Average Monthly Retail Prices for Dry Beans Prices (2007)	22
Table 8(d): Average Monthly Retail Prices for Dry Beans Prices (2008).....	23

EXTERNAL TRADE

Table 9: Export of Coffee, Tea and Horticultural Produce	24
Table 10: Monthly Exports of Horticultural Products.....	25
Table 11: Kenya’s External Trade, August 2007 – August 2008	26
Table 12: Major Destinations of Domestic Exports, August 2007 – August 2008.....	27
Table 13: Major Origins of Imports, August 2007 – August 2008.....	28
Table 12 (a): Domestic Exports by Broad Economic Category	29
Table 13 (a): Imports by Broad Economic Category	30

Energy

Table 14(a): Local Electricity Generation by Source	31
Table 14(b): Generation and Consumption of Electricity	32
Table 14 (c): Consumption of Petroleum Fuels	33
Table 14 (d): Weighted Average Retail Prices for Selected Fuel Products within Nairobi	34
Table 14 (e): Weighted Average Retail Prices for Selected Fuels in Kenya.....	35
Table 14(f): Murban ADNOC Prices 2003-2008.....	36

MANUFACTURING AND, BUILDING AND CONSTRUCTION

Table 15: Value of Building Plans Approved by Nairobi City Council (NCC).....	37
Table 16(a): Domestic Production of Sugar	38
Table 16(c): Production of Assembled Vehicles	39
Table 16(e): Cement production and Consumption	40
Table 16F: Milk Intakes in the Formal Milk Sector.	41

TOURISM AND TRANSPORT

Table 17: Visitor Arrivals* through Jomo Kenyatta International Airport (J.K.I.A) and Moi International Airport (M.I.A)	42
TABLE (18A): JOMO KENYATTA INT. AIRPORT INTERNATIONAL FLIGHTS ONLY- EMBARKED PASSENGERS BY PORT OF DESTINATION.	43
TABLE (18B): JOMO KENYATTA INT. AIRPORT INTERNATIONAL FLIGHTS ONLY- LANDED PASSENGERS BY PORT OF DESTINATION.....	45
Table 18 C: New Vehicle Registration	47

CHARTS

FIG. 1: OVERALL MONTH ON MONTH AND UNDERLYING INFLATION RATES -----	10
FIG 2: END OF MONTH MEAN EXCHANGE RATE OF KENYA SHILLINGS AGAINST MAJOR SELECTED CURRENCIES -----	12
FIG 3: INTEREST RATES -----	13
FIG 4: NAIROBI STOCK EXCHANGE SHARES INDEX -----	14
FIG 5: MONEY SUPPLY (M ₃) -----	16
FIG 6: FOREIGN EXCHANGE RESERVES -----	17
FIG.7: COFFEE SALES AT THE NAIROBI COFFEE EXCHANGE -----	18
FIG.8: TEA PRODUCTION -----	19
Fig 9: Electricity Generation by Source -----	31
Fig 10: Electricity Generation Consumption and Power Losses -----	32
Fig 11(a): Average Retail Prices of selected Petroleum Products -----	34
Fig 11(b): Weighted Average Prices for LPG in Kenya -----	35
Fig 12: Trend for Murban ADNOC Crude Oil Prices -----	36
FIG 13: Milk Intake in the Formal Sector -----	41
FIG 14: VISITORS ARRIVING IN KENYA THROUGH THE MAIN AIRPORTS -----	42
FIG 15: J.K.I.A. PASSENGERS BY REGION OF DESTINATION -----	44
FIG 16: J.K.I.A. PASSENGERS BY REGION OF ORIGIN -----	46

Key highlights on Leading Economic Indicators

Overview

The monthly Leading Economic Indicators Publication for April 2009 highlight trends in Consumer Price Indices (CPI) and inflation, interest rates, exchange rates, international trade, agriculture, energy, manufacturing, building and construction, tourism and transport.

Macroeconomic Indicators and Financial Intermediation

In April 2009, the Consumer Price Indices (CPI) increased by 2.9 per cent from 345.33 points in March 2009 to 355.36 points in April 2009. Month-on-month overall inflation rate increased from 25.8 per cent in March 2009 to 26.1 per cent in April 2009. On the other hand, the month on month underlying inflation rate which excludes food items from the CPI basket increased from 7.7 per cent in March 2009 to 8.2 per cent in April 2009.

The CPI increased by 3.6 per cent from 333.21 points in February 2009 to 345.33 points in March 2009. Month-on-month overall inflation rate increased from 25.1 per cent in February 2009 to 25.8 per cent in March 2009. On the other hand, the month on month underlying inflation rate which excludes food items from the CPI basket decreased from 7.9 per cent in February to 7.7 per cent in March 2009.

The CPI increased by 4.78 per cent from 318.02 points in January 2009 to 333.21 points in February 2009. Month-on-month overall inflation rate increased from 21.9 per cent in January 2009 to 25.1 per cent in February 2009. On the other hand, the month on month underlying inflation rate which excludes food items from the CPI basket decreased from a revised figure of 8.4 per cent in January to 7.9 per cent in February 2009.

The Kenya Shilling recorded mixed performance against major international currencies in the first two months of 2009. The Shilling strengthened against the Euro, the Japanese Yen and the Ugandan Shilling while depreciating against the US Dollar, the Sterling pound, the South African Rand and the Tanzanian Shilling during the same period. The shilling appreciated against the Euro and the Japanese Yen in February 2009 to trade at KSh 101.463 and KSh 81.592 up from a trading of KSh 102.546 and KSh 88.974, respectively

in January 2009. The shilling weakened marginally against the US Dollar, the Sterling pound, the South African Rand to trade at KSh 79.687, KSh 113.849 and KSh 8.033 in February 2009 down from KSh 79.544, KSh 113.126 and KSh 7.896, respectively in January 2009. The Shilling appreciated against the Ugandan but weakened against the Tanzanian Shilling over the same period.

The benchmark 91-day Treasury bill showed a declining trend in the first two months of 2009 compared to the trend observed in the last quarter of 2008. The 91-day Treasury bill declined from 8.47 per cent in January 2009 to 7.55 per cent in February 2009. The weighted average lending rate offered by Commercial banks for loans and advances declined by 0.58 percentage points from 14.80 per cent in December 2008 to 14.22 per cent in January 2009. However, savings rate offered by the same banks rose from 1.62 per cent to 2.10 per cent over the same period.

In February 2008, trading at the Nairobi Stock Exchange (NSE) continued with its downward trend that started in mid 2008. The 20-share index (NSE 20) declined further by 22.6 per cent from 3,198.9 points in January 2009 to 2,474.8 points in February 2009. Total value of shares traded declined by 37.3 per cent from KSh 2,624.4 million in January 2009 to KSh 1,645.3 million in February 2009. Total number of shares declined by 15.2 per cent from 177,553 thousand shares to 150,640 thousand shares over the same period.

Broad money supply (M3) contracted marginally from KSh 900.3 billion in December 2008 to KSh 895.6 billion in January 2009. Money and quasi-money (M2) also contracted marginally from KSh 766.5 billion to KSh 763.9 billion over the same period.

Gross Total Foreign Exchange Reserves contracted from KSh 362.3 billion in December 2008 to KSh 345.6 billion in January 2009 while Net Foreign Exchange Reserves expanded from KSh 260.6 billion to KSh 259.5 billion over the same period.

SECTORAL PERFORMANCES

a). Agriculture

Total quantity of coffee auctioned at the Nairobi Coffee Exchange increased by 12.6 per cent from 5,643 MT in January 2009 to 6,356 MT in January 2009 while its average auction price moved from KSh 159.90 per kilogram in January 2009 to KSh 172.92 per kilogram in January 2008.

Quantity of processed tea declined by 6.4 per cent from 369,605 MT in 2007 to 345,816 MT in 2008 while average auction price for tea increased from KSh 119.24 per kilogram to KSh 160.41 per kilogram over the same period.

Average price for dry maize increased to stand at KSh 29.7 per kilogram in December 2008 compared to KSh 15.93 per kilogram in December 2007 while average price for dry beans increased from KSh 40.97 per Kilogram in December 2007 to KSh 69.1 per kilogram in December 2008.

b). International Trade

Total quantity of coffee exported rose significantly by 52.8 per cent from 2,680.4 MT in December 2008 to 4,096.6 MT in January 2009 while its value also increased significantly by 56.4 per cent from KSh 648.2 million to 1,013.7 KSh million over the same period.

Quantity of tea exported declined by 10.6 per cent from 39,089.5 MT in December 2008 to 34,946.6 MT in January 2009 while its value declined marginally from KSh 6,251.1 million to KSh 6,138.5 million over the same period.

Quantity of horticultural produce exported rose marginally from 192,147 MT in 2007 to 193,134 MT in 2008 while export value of horticultural produce declined by 13.4 per cent from KSh 67.2 billion to KSh 58.2 billion over the same period.

Volume of trade declined by 4.5 per cent from KSh 97,911.7 million in December 2008 to KSh 93,536.9 million in January 2009. Total exports and imports declined by 6.8 per cent and 3.5 per cent to stand at KSh 27,359.8 million and 66,177.2 million, respectively.

Domestic exports by Broad Economic Category (BEC) indicate that food and beverages continue to be the main export category for the country. In January 2009, exports of food and beverages recorded a share of 43.8 per cent of the total exports while non-food industrial supplies and consumer goods not elsewhere specified had a share of 25.60 per cent and 25.65 per cent, respectively. BEC further indicate that share of exports of fuel and lubricants, machinery and other capital equipment and transport equipment recorded marginal shares in total exports.

Imports by Broad Economic Category (BEC) indicate that imports of non-food industrial supplies, transport equipment and fuel and lubricants were the major imports to the country in January 2008. Import share of non-food industrial supplies and transport equipment increased from shares of 29.93 per cent and 11.39 per cent in December 2009 to 32.52 per cent and 20.24 per cent in January 2009, respectively. Import share of machinery and other capital equipment, and fuel and lubricants declined from shares of 27.33 per cent and 16.66 per cent to 16.67 per cent and 15.27 per cent, respectively over the same period.

c). Energy

Total electricity generation declined by 8.1 per cent from 608.7 million KWh in January 2009 to 559.5 million KWh in February 2009. The decline in generation may be attributed to a decline in generation by all the generation sources. Share of hydro generation in total generation stood at 43.4 per cent while that of thermal and geo-thermal generation stood at 36.5 per cent and 20.1 per cent, respectively in February 2009. In the same period, total domestic consumption of electricity declined by 3.7 per cent from 454.8 million KWh to stand at 438.0 million KWh. Power losses improved from 151.9 million KWh to 119.5 million KWh over the same period.

Exports of electricity to Uganda declined marginally from 2.01 million KWh in January 2009 to 2.00 million KWh in February 2009 while total imports of electricity from Uganda and Tanzania recorded a slim decline from 2.3 million KWh to 2.1 million KWh over the same period.

Total consumption of petroleum products declined by 8.6 per cent from 3,121.8 thousand MT in 2007 compared to 2,854.1 thousand MT in 2008. The decline in consumption of petroleum products may be attributed to the high cost of fuel prevailing during that period.

In the domestic market, average retail prices for motor gasoline, light diesel oil and illuminating kerosene declined further in February 2009 compared to the previous two months. Average retail prices for motor gasoline, light diesel oil and illuminating kerosene declined further to retail at KSh 81.69, KSh 73.94 and KSh 65.94 per litre in February 2009 down from KSh 84.52, KSh 75.57 and KSh 68.00 per litre in January 2009, respectively. Average prices of motor gasoline and light diesel in Nairobi also declined to retail at KSh 76.79 and KSh 71.23 per litre down from KSh 84.47 and KSh 72.63 per litre, respectively over the same period.

In the international market, the price of Murban crude oil declined by 8.0 per cent from US Dollars 48.85 per barrel in January 2009 to US Dollars 44.95 per barrel in February 2009.

d). Manufacturing and, building and construction

Domestic production of sugar declined marginally by 1.6 per cent from 520,404 MT in 2007 to 512,315 MT in 2008 while production of soft drinks also declined by 5.5 per cent from 328,231 MT in 2007 to 310,267 MT in 2008.

Production of new assembled vehicles declined by 12.2 per cent from 6,542 assembled vehicles in 2007 to 5,747 assembled vehicles in 2008 while production of galvanized sheets increased by 5.3 per cent from 188,260 MT to 198,258 MT over the same period.

Quantity of cement produced declined marginally from 250.0 thousand MT in January 2009 to 248.7 thousand MT in February 2009. Consumption of cement also declined marginally by 2.6 per cent from 235,840 MT to 229,701 MT over the same period.

Milk deliveries in the formal milk sector declined by 8.0 per cent from 38.9 million litres in December 2008 to 35.8 million litres in February 2009.

e). Tourism and Transport

The number of visitors who arrived through Jomo Kenyatta International Airport (JKIA) and Moi International Airport declined significantly by 69.9 per cent from 1,895,807 visitors in 2007 to 721,566 visitors in 2008.

The number of passengers who embarked at Jomo Kenyatta International Airport (JKIA) declined by 15.7 per cent from 115,135 persons in December 2008 to 97,062 persons in January 2008 while number of passengers who landed declined by 37.3 per cent from 134,420 persons to 84,278 persons over the same period.

Total number of vehicles registered increased significantly by 42.8 per cent from 85,324 vehicles registered in 2007 to 121,831 vehicles registered in 2008.

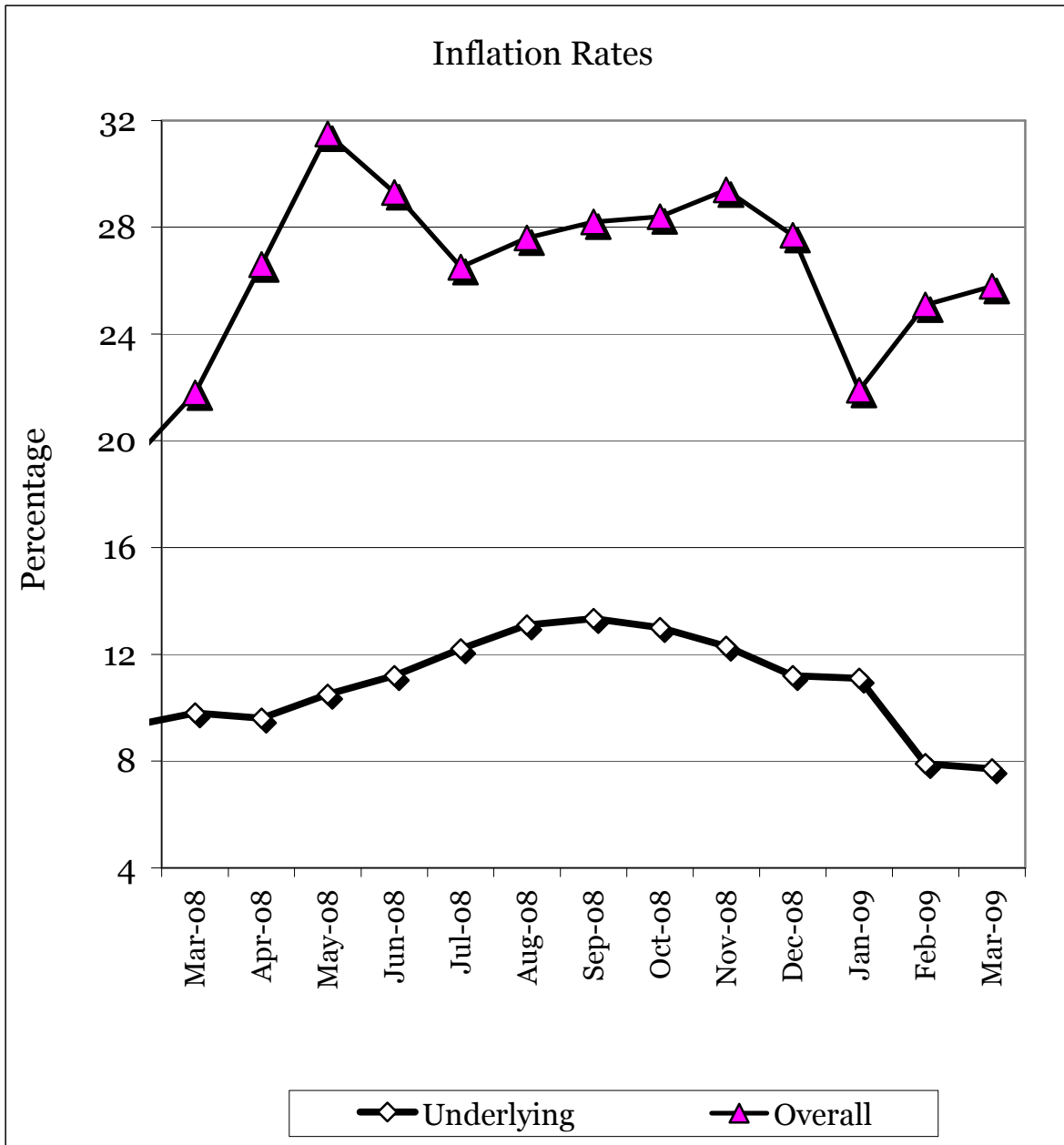
TABLE 1: KENYA CONSUMER PRICE INDICES AND INFLATION RATE

Base Oct 1997=100.

PERIOD	NAIROBI INDEX	REST* OF URBAN TOWNS INDEX	OVERALL KENYA INDEX	OVERALL MONTH ON MONTH INFLATION	UNDERLYING INFLATION RATE****
2008					
March	277.61	274.40	274.55	21.8	6.4
April	282.38	281.55	281.88	26.6	6.7
May	293.43	290.69	291.79	31.5	7.1
June	287.09	293.17	290.75	29.3	7.6
July	285.15	287.60	286.62	26.5	8.1
August	286.94	288.80	288.06	27.6	8.8
September	293.65	291.86	292.57	28.2	9.5
October	297.15	294.20	295.38	28.4	10.2
November	302.93	301.04	301.79	29.4	10.7
December	308.18	305.01	306.28	27.7	11.1
2009					
January	328.18	283.44	318.02	21.9	11.1
February	345.09	325.31	333.21	25.1	11.0
March	362.65	334.06	345.33	25.8	7.7

Source: Kenya National Bureau of Statistics

FIG. 1: OVERALL MONTH ON MONTH AND UNDERLYING INFLATION RATES



**TABLE 2: MEAN FOREIGN EXCHANGE RATES OF KENYA SHILLINGS AGAINST SELECTED MAJOR CURRENCIES
AT THE END OF THE MONTH**

TABLE 2

CURRENCY	2008										2009		
	Mar	Apr	May	June	July	Aug	Sep	Oct	Nov	DEC	Jan	Feb	Mar
1 US Dollar	62.766	62.136	62.029	64.694	67.318	68.733	73.219	79.653	77.861	77.711	79.544	79.687	80.431
1 Sterling Pound	124.453	122.281	122.574	128.960	133.254	125.944	132.104	130.221	119.757	112.347	113.126	113.849	114.845
1 EURO	98.829	97.007	96.160	102.157	104.980	101.394	105.277	101.994	100.408	109.482	102.546	101.463	106.424
100 Japanese Yen	62.924	60.010	58.855	61.082	62.248	63.064	70.030	81.201	81.810	86.065	88.974	81.592	82.134
1 SA Rand	7.736	8.135	8.226	8.210	9.117	8.937	8.792	7.920	7.465	8.268	7.896	8.033	8.338
USHS/KES	26.845	27.054	26.278	25.059	24.213	23.933	22.815	23.603	25.392	25.125	25.005	24.879	26.514
TSHS/KES	19.142	19.458	19.322	18.263	17.388	16.928	15.932	16.352	16.371	16.793	16.280	16.477	16.350

* Mean of commercial banks buying and selling exchange rates prevailing at the end of the month

'Source: Kenya National Bureau of Statistics

FIG 2: END OF MONTH MEAN EXCHANGE RATE OF KENYA SHILLINGS AGAINST MAJOR SELECTED CURRENCIES

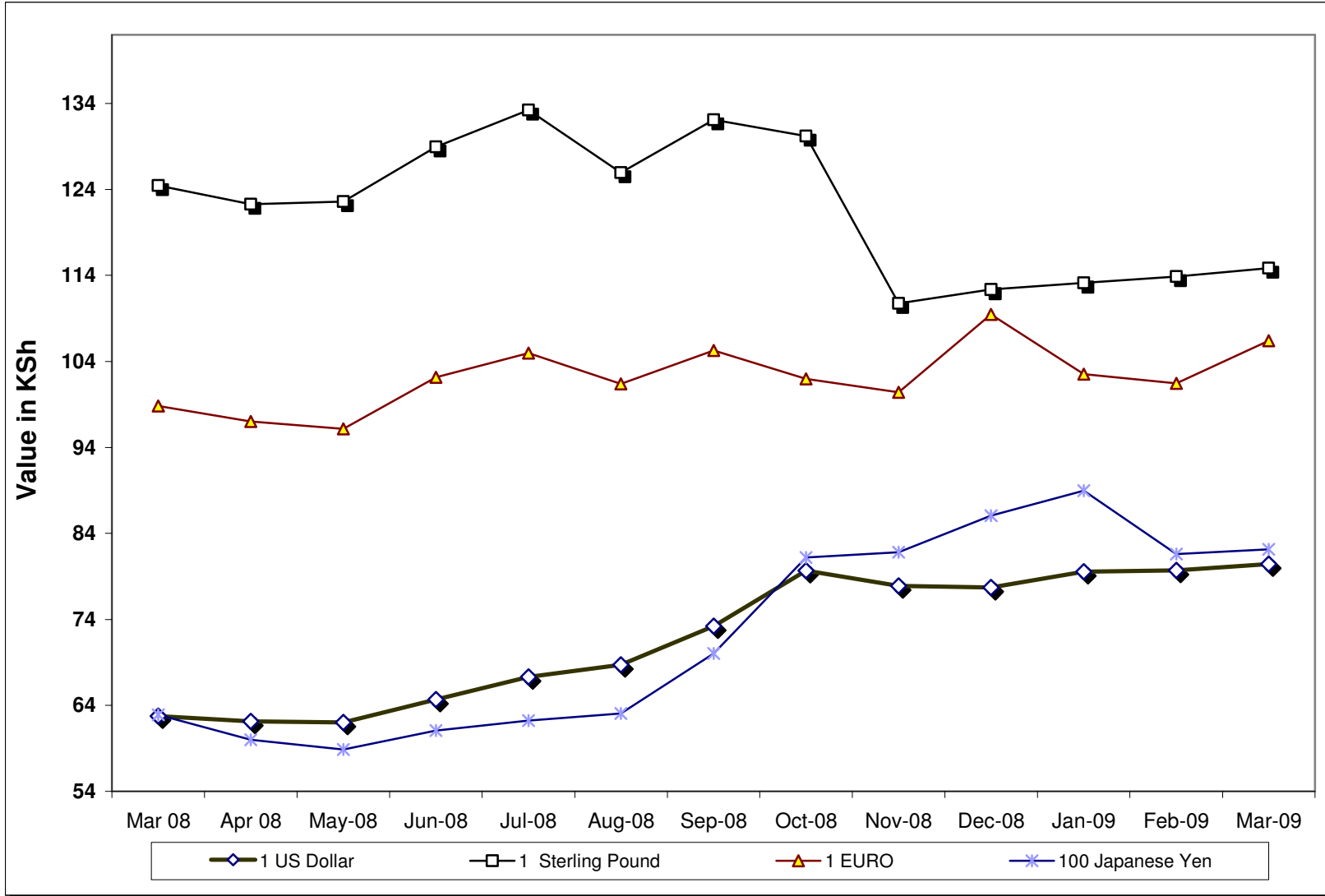


Table 3: Interest Rates (%)
TABLE 3: INTEREST RATES (%)

MONTHS	Average Yield Rates 91 - Days Treasury Bills	Rates for Commercial Banks Loans and Advances (Weighted Average)	Overdraft Rates	Inter - Bank Rates	Savings (Commercial Banks Rates)
2008					
January	6.99	13.78	13.41	7.61	1.72
February	7.28	13.84	13.26	7.21	1.70
March	6.89	14.06	13.48	6.35	1.72
April	7.35	13.91	13.46	6.70	1.71
May	7.76	14.01	13.53	7.72	1.71
June	7.73	14.06	13.30	7.77	1.70
July	8.03	13.90	13.46	8.06	1.67
August	8.02	13.66	13.11	6.93	1.68
September	7.70	13.66	13.43	6.70	1.73
October	7.75	14.12	13.91	6.81	1.74
November	8.39	14.33	13.85	6.84	1.61
December	8.59	14.80	14.40	6.68	1.62
2009					
January	8.47	14.22	14.55	5.92	2.10
February	7.55	14.67	13.46	5.49	5.08
March	7.31	14.92	13.78	5.72	4.62

Source : Central Bank of Kenya

- data not available

FIG 3: INTEREST RATES

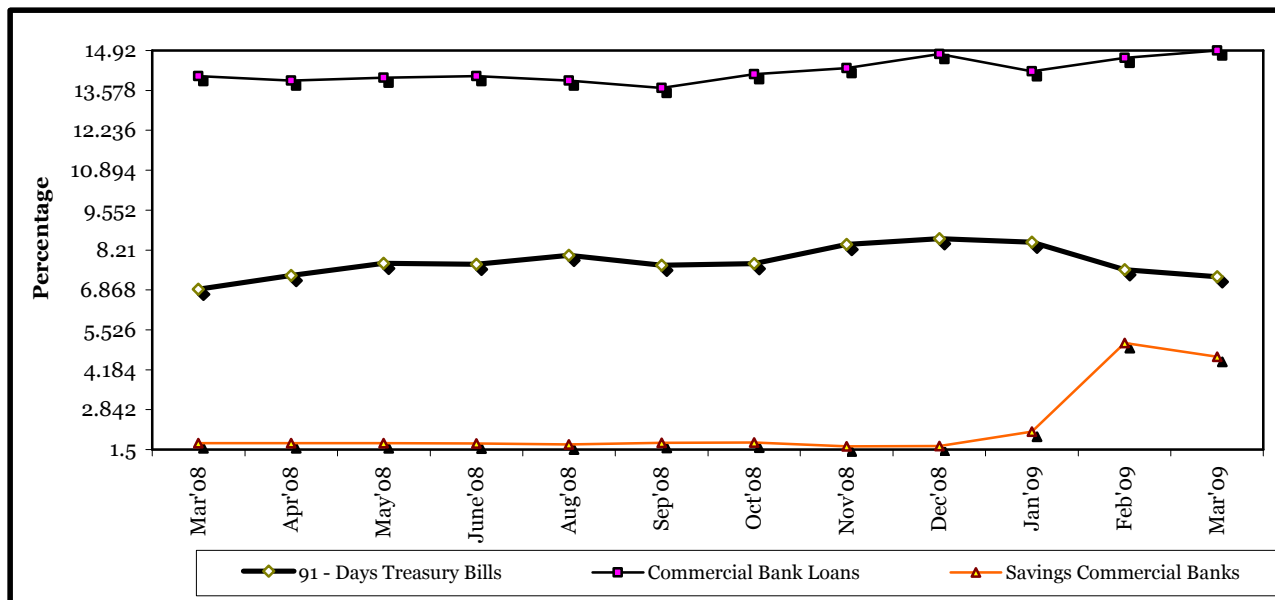


TABLE 4: CAPITAL MARKETS – NAIROBI STOCK EXCHANGE

MONTH	NUMBER OF TRANSACTIONS	NUMBER OF SHARES ('000)	VALUE OF SHARES ('000 KShs)	SHARES INDEX Base Jan 1966=100
Mar-08	60,038	180,644	7,320,547	4,843.2
Apr-08	57,526	141,766	5,635,570	5,336.0
May-08	71,959	168,034	6,836,652	5,175.8
Jun-08	143,942	2,154,897	22,130,018	5,185.6
Jul-08	132,507	983,747	14,282,189	4,868.3
Aug-08	83,372	490,810	7,490,223	4,648.8
Sep-08	66,060	485,283	6,787,824	4,180.4
Oct-08	44,190	393,530	3,642,410	3,386.7
Nov-08	48,277	290,953	3,723,721	3,341.5
Dec-08	29,302	170,900	4,620,000	3,521.2
Jan-09	37,310	177,553	2,624,391	3,198.9
Feb-09	30,977	159,640	1,645,278	2,474.8
Mar-09	35,328	207,390	2,414,121	2,805.0

Source : Nairobi Stock Exchange

FIG 4: NAIROBI STOCK EXCHANGE SHARES INDEX

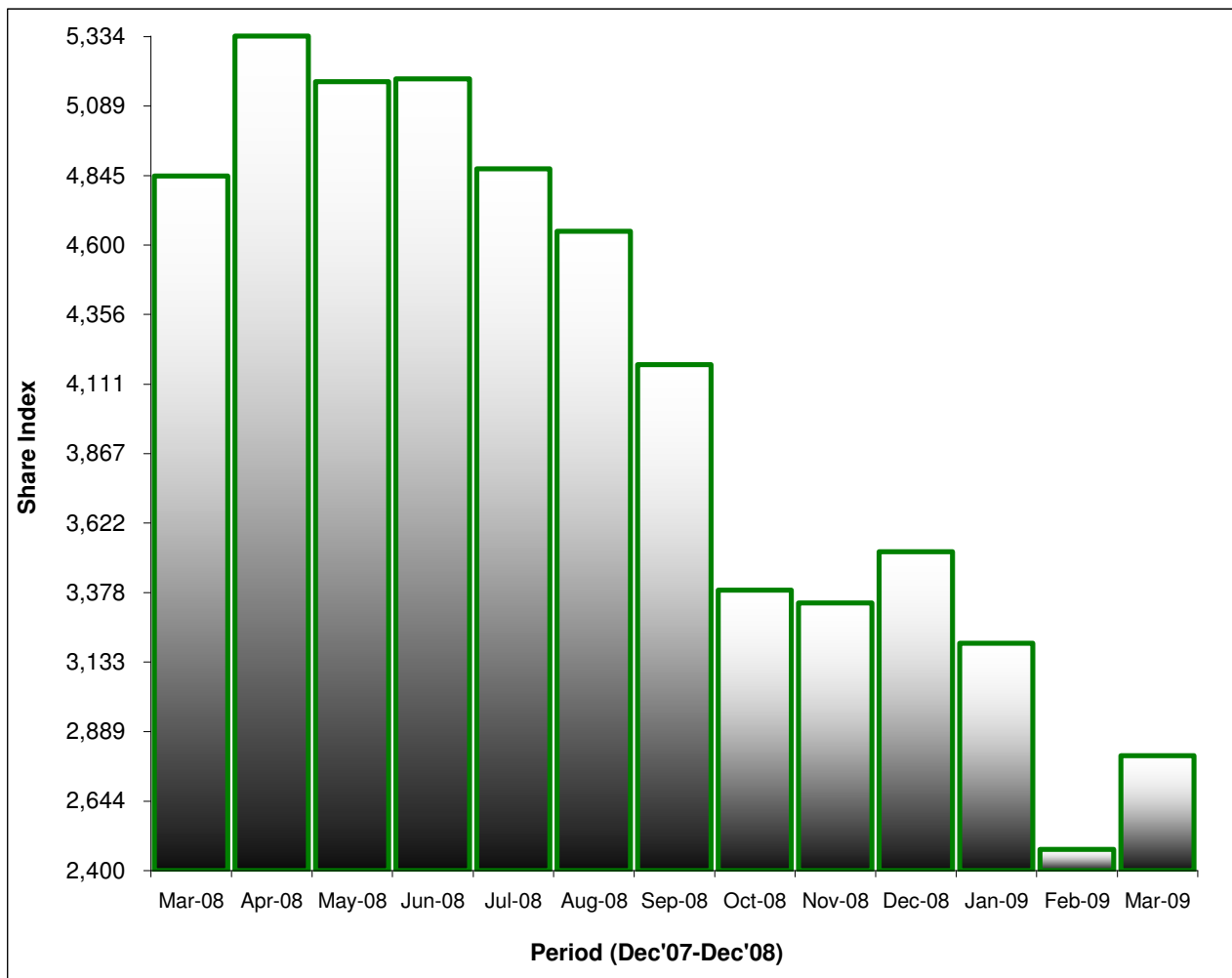


TABLE 5 (a): MONEY SUPPLY

KSh Million

As at end of	MONEY AND QUASI MONEY (M2)				BROAD MONEY (M3)	% CHANGE****
	MONEY (M1)*	QUASI - MONEY		TOTAL (M2)		
		(Commercial Banks)**	(NBFIs)			
2008						
March	380,141	307,142	9,859	697,142	811,214	0.12
April	436,622	302,408	12,978	752,008	864,105	6.52
May	395,158	304,077	11,995	711,230	839,239	-2.88
June	391,824	314,762	12,723	719,309	840,679	0.17
July	382,174	325,353	12,633	720,160	850,412	1.16
August	383,424	328,254	12,678	724,356	854,952	0.53
September	385,004	338,783	12,677	736,464	859,328	0.51
October	398,571	342,978	12,489	753,883	883,497	2.81
November	393,400	345,872	12,912	751,184	890,233	0.76
December	392,778	360,300	13,531	766,471	901,055	1.22
2009						
January	398,736	352,411	12,623	763,876	895,397	-0.63
February	380,498	374,485	13,343	768,326	900,031	0.52
March	408,431	358,243	13,343	780,017	905,426	0.60

Source : Central Bank of Kenya

* Currency in circulation less cash in banks plus all demand deposits except those of Central Government, Local Govt, Banks, non residents and foreign currency deposits.

** All other deposits in commercial banks except those of Central Government.

*** Broad Money (M3) includes M2 and Quasi - Money supplied by Non Bank Financial Institutions

**** Compared with previous month.

***** Provisional

*****From January 2006 in line with the harmonisation of definitions of monetary aggregates within East African Countries(EAC) monetary definitions have been redefined for the following aggregates.

1. Base money =currency outside banks plus deposits at the Central Bank

2.Narrow Money (M1) =currency in circulation plus demand deposits

FIG 5: MONEY SUPPLY (M3)

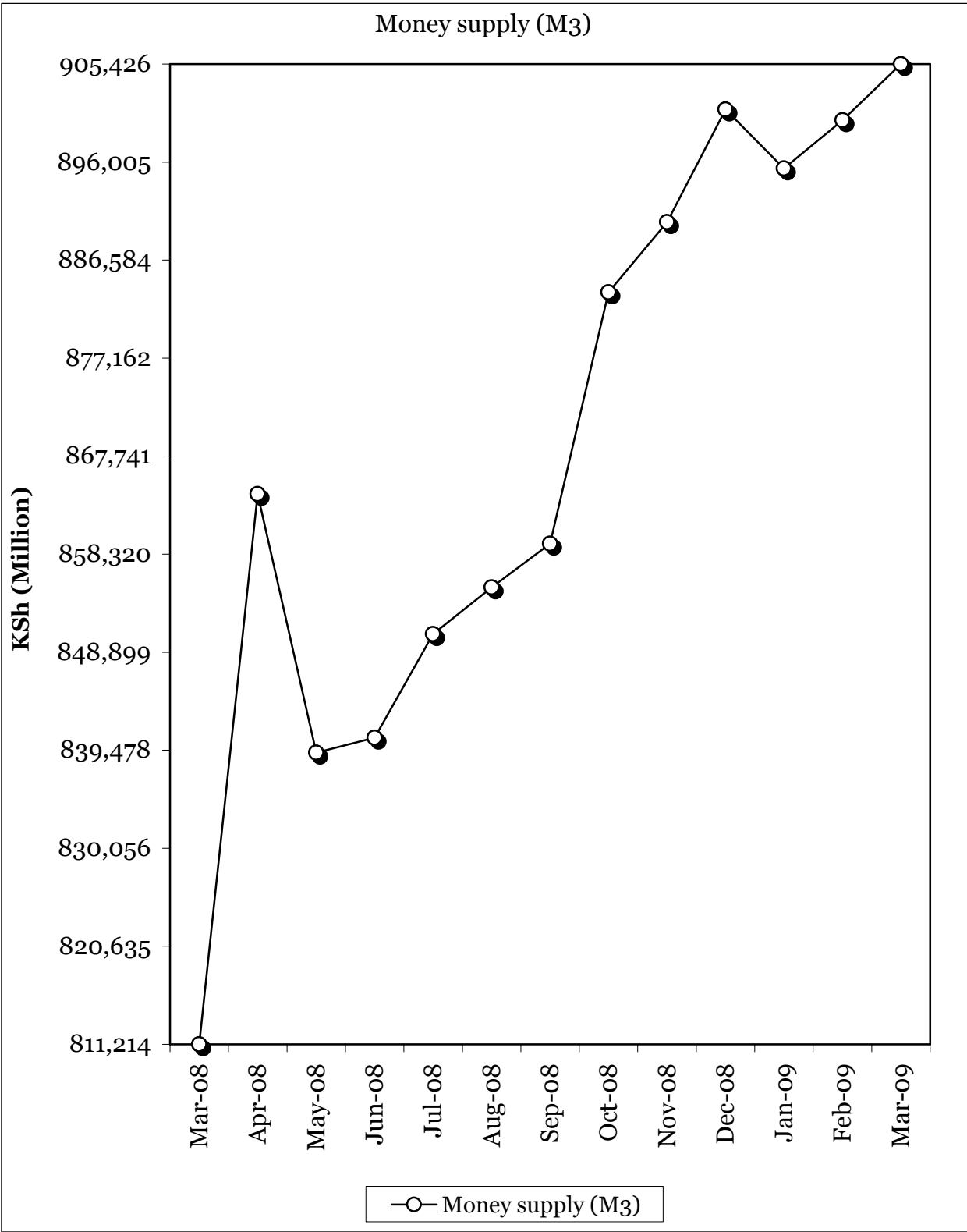


TABLE 5b: FOREIGN EXCHANGE RESERVES

MONTHS	CENTRAL MONETARY AUTHORITY			COMMERCIAL BANKS	GROSS TOTAL	NET FOREIGN EXCHANGE
	CENTRAL BANK	CENTRAL GOVERNMENT	TOTAL			
2008						
January	249,055	1,450	250,505	74,449	324,954	278,808
February	239,306	1,450	240,756	74,333	315,089	267,261
March	216,034	1,450	217,484	83,026	300,510	251,014
April	211,637	1,372	213,009	98,622	311,631	263,236
May	214,110	1,372	215,482	112,211	327,693	280,192
June	223,401	1,372	224,773	151,481	376,254	292,664
July	233,173	1,372	234,545	162,483	397,028	291,398
August	224,770	1,395	226,165	139,078	365,243	271,084
September	231,449	1,471	232,920	136,265	369,185	264,904
October	234,167	1,546	235,713	143,918	379,631	273,651
November	224,119	1,502	225,621	128,855	354,476	260,076
December	223,549	1,533	225,082	137,262	362,344	260,593
2009						
January	218,373	1,545	219,918	125,657	345,575	259,468

Source : Central Bank of Kenya

* Central Government includes reserve position in the Fund and deposits with Crown Agents.

- data not yet available

* Provisional

FIG 6: FOREIGN EXCHANGE RESERVES

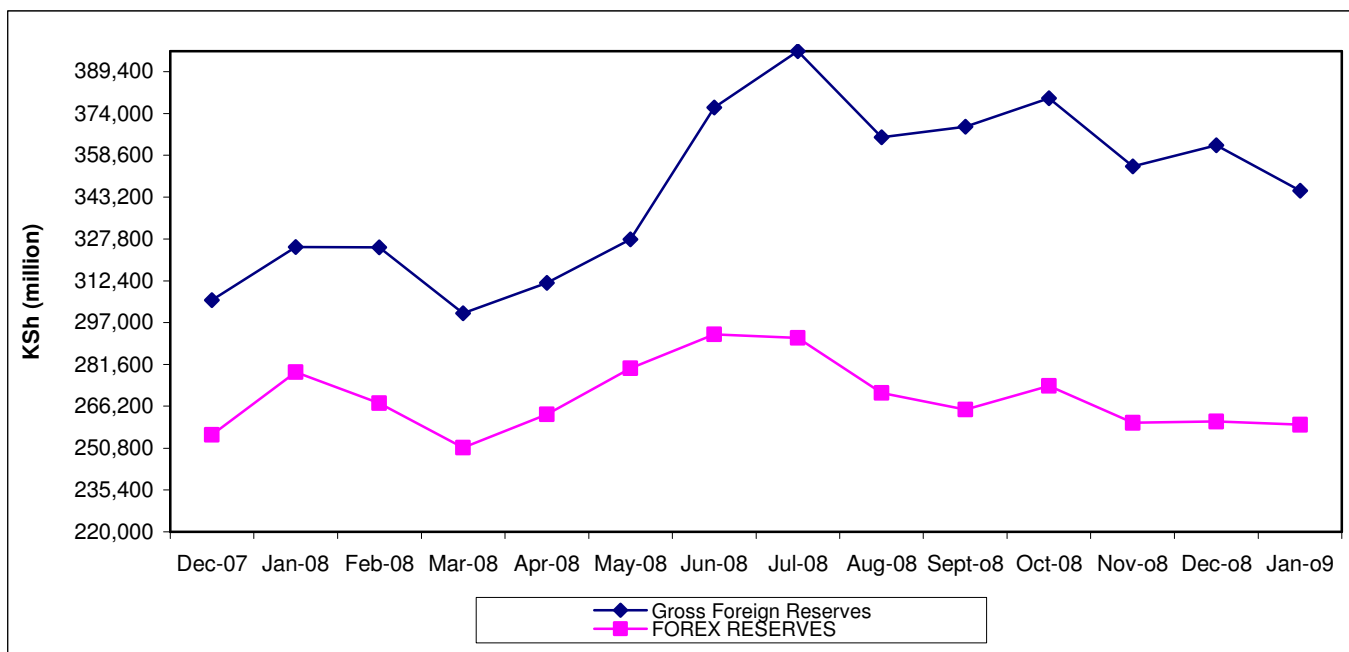


TABLE 6: COFFEE SALES AND PRICES

Months	2007			2008***			2009***		
	QUANTITY (MT)	PRICE (\$ /kg)	PRICE (Ksh /kg)	QUANTITY (MT)	PRICE (\$ /kg)	PRICE (Ksh /kg)	QUANTITY (MT)	PRICE (\$ /kg)	PRICE (Ksh /kg)
January	4,670	2.88	201.48	2,344	2.89	203.63	5,643	2.01	159.90
February	5,064	3.03	211.04	4,899	3.12	220.19	6,356	2.17	172.92
March	6,839	2.99	207.62	6,117	3.09	193.98	8,721		156.29
April	6,324	2.67	182.91	6,374	2.72	169.14			
May	6,991	2.47	166.41	3,179	2.34	144.93			
June	5,451	2.18	145.61	0	0.00	0.00			
July	4,669	2.11	141.77	1,957	2.64	177.50			
August**	0	0	0	2,173	2.61	179.50			
September	3,817	2.36	157.96	3,878	2.37	173.56			
October	4,252	2.24	150.18	2,253	1.66	132.37			
November	2,895	2.21	142.15	2,517	1.95	151.92			
December	1,296	2.86	178.73	3,014	2.08	161.50			
Annual	52,269	2.56	173.91	38,704	2.60	177.22			

Source : Coffee Board of Kenya

* Auction Price

** Nairobi Coffee Exchange was in recess for most of August 2003, 2005,2006,2007&June 2008

*** Figures subject to revision

NB: MT denotes Metric Tonnes

FIG.7: COFFEE SALES AT THE NAIROBI COFFEE EXCHANGE

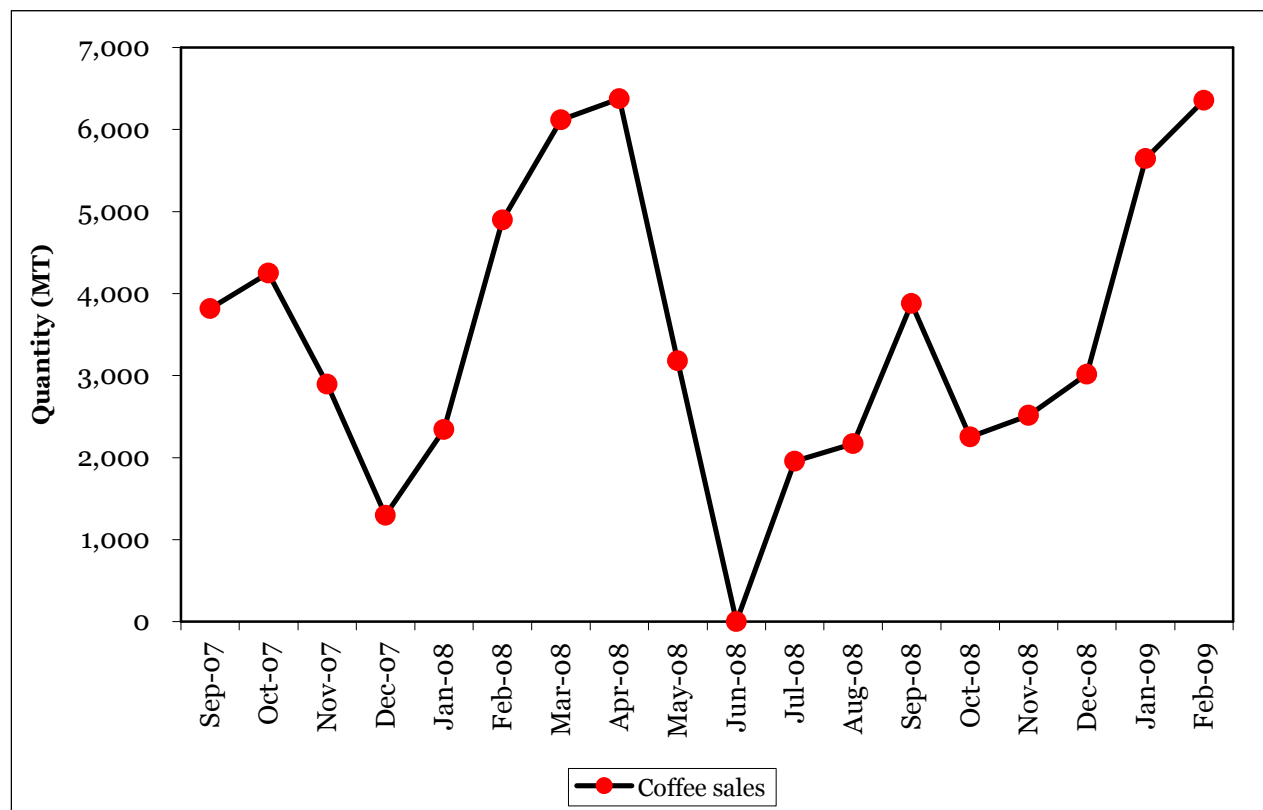


TABLE 7: TEA PRODUCTION AND PRICES*

Months	2008**			2009**		
	QUANTITY	PRICE*	PRICE*	QUANTITY	PRICE*	PRICE*
	(MT)	(\$/kg)	(KShs/kg)	(MT)	(\$/kg)	(KShs/kg)
January	29,745	2.28	153.94	25,484	2.30	182.33
February	24,094	2.42	169.94	21,537	2.27	180.89
March	16,916	2.21	145.10			
April	27,415	2.31	143.67			
May	36,402	2.28	140.85			
June	22,817	2.43	154.16			
July	24,239	2.55	169.00			
August	24,494	2.77	187.60			
September	32,061	2.81	195.36			
October	35,307	2.29	175.90			
November	34,406	1.88	146.80			
December	37,922	1.89	146.21			
Annual	345,816	2.32	160.41			

Source: Tea Board of Kenya

MT for Metric Tonnes

*Auction prices

**Figures subject to revision

FIG.8: TEA PRODUCTION

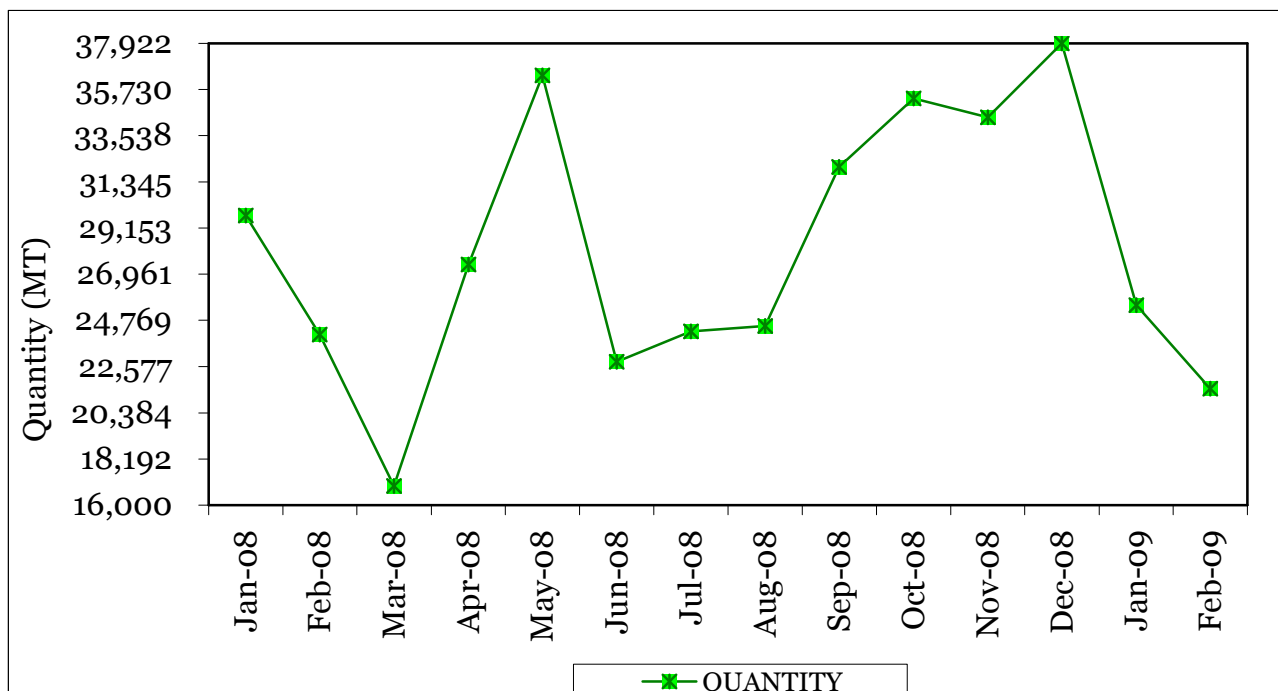


Table 8(a): AVERAGE MONTHLY RETAIL PRICES FOR DRY MAIZE IN THE YEAR-2007

Ksh. Per Kg.

MARKETS	Jan	Feb	March	April	May	JUNE	JULY	August	Sep	Oct	Nov	Dec
KIAMBU	17.39	16.67	16.67	14.29	16.67	11.90	11.90	11.90	9.52	9.52	9.52	-
LIMURU	15.00	15.00	15.00	15.00	15.00	15.00	16.18	16.12	16.00	15.00	15.00	-
THIKA	18.18	19.05	19.05	19.05	19.05	18.18	19.05	18.18	18.18	18.18	18.18	-
GATUNDU	18.34	16.67	14.29	16.67	15.78	14.29	10.00	17.50	-	19.05	-	-
MUTHITHI	11.90	11.90	10.71	9.52	10.24	10.72	13.33	-	-	-	-	-
MUKUYU	17.55	15.79	15.79	15.00	19.05	15.79	12.50	12.50	-	-	-	14.29
KIRIAINI	16.67	16.67	16.67	16.67	14.29	14.29	14.29	14.29	14.29	-	-	14.29
ENGINEER	18.00	16.67	16.25	15.00	16.67	20.00	18.63	15.00	15.00	15.00	15.00	-
NYERI	19.05	16.67	16.67	14.29	14.29	19.05	19.05	14.29	14.29	14.29	-	-
ENDARASHA	16.67	17.86	19.05	20.00	19.05	-	-	-	-	-	-	-
KARATINA	15.91	16.29	13.64	13.33	14.29	17.50	13.33	14.29	15.00	15.00	15.00	-
GAKINDU	16.67	17.50	17.50	14.29	17.50	12.50	14.29	17.50	17.50	14.29	14.29	-
NANYUKI	20.00	20.00	20.00	20.00	20.00	20.00	17.00	17.00	20.00	20.00	20.00	-
NYAHURURU	17.50	15.95	14.59	12.00	12.00	22.50	11.90	14.29	-	-	-	-
MARIAKANI	20.00	20.00	18.00	20.00	18.00	18.00	18.00	17.00	17.00	17.00	17.00	18.00
KALOLENI	20.00	20.00	17.00	17.00	17.00	18.00	18.00	17.00	17.00	17.00	14.00	18.00
MALINDI	20.00	17.21	20.00	-	20.00	20.00	20.00	20.00	-	-	-	-
KIBAUNI KILIFI	21.00	20.00	18.00	18.00	17.00	16.50	17.00	17.00	17.00	17.00	-	18.00
UKUNDA	35.00	35.00	38.00	35.00	35.00	30.00	25.00	25.00	-	-	-	-
WUNDANYI	-	-	14.00	14.00	13.00	-	-	-	-	-	-	-
MWEMBE TAYARI	20.00	20.00	23.67	30.00	20.00	20.00	20.00	18.00	-	-	-	-
SEGA	20.00	20.00	20.00	22.00	20.00	-	-	-	-	-	-	-
KONGOWEA	15.00	15.00	-	15.00	14.00	14.50	14.00	-	-	-	-	-
GARSEN	-	20.00	25.00	-	-	-	20.00	20.00	25.00	-	-	-
BURA TANA	20.00	20.00	20.00	40.00	20.00	-	-	-	-	-	-	-
RUNYENJES	17.50	17.50	15.00	15.00	15.00	12.50	10.00	12.50	12.50	12.50	15.00	12.50
EMBU TOWN	17.50	17.50	15.00	12.50	12.50	12.00	12.50	12.50	12.50	12.50	15.00	15.00
SIKAGO	20.00	17.50	12.50	12.50	12.50	-	11.75	11.50	11.50	15.00	15.00	15.00
MWINGI	15.00	16.00	15.00	8.00	-	15.00	15.00	10.00	15.00	-	-	-
MIGGWAINI	17.00	16.00	7.27	10.00	10.00	10.00	12.00	12.00	-	12.00	13.00	-
MACHAKOS TOWN	18.18	-	12.00	12.00	5.71	10.00	10.00	12.00	12.00	13.00	-	-
TALA	12.00	9.77	9.38	9.50	10.00	9.52	9.00	20.00	10.00	10.00	-	-
MAUA	-	25.00	16.25	12.50	15.00	13.75	12.50	-	-	-	-	-
KIANJAI	17.78	17.78	10.00	12.50	11.11	11.11	8.89	-	-	-	-	-
GAKROMERE	16.00	13.64	8.00	9.09	9.09	10.91	9.09	9.09	9.09	12.00	11.82	11.82
WOTE	17.00	15.00	14.00	11.00	11.00	12.00	12.00	12.00	14.00	14.00	-	17.00
GARISA TOWN	29.63	16.67	16.67	16.67	16.67	16.67	16.67	-	15.00	-	-	-
DARAJA MBILI	13.33	14.29	13.64	14.29	14.29	13.64	12.83	11.36	13.33	14.29	9.52	17.62
KIBIRIGO	16.67	-	-	-	-	16.67	11.90	-	13.33	-	-	-
NYANGUSU	14.29	9.11	10.87	11.90	13.10	10.04	10.87	11.90	9.52	14.29	11.90	13.33
RIOHANDA	13.33	-	-	-	22.62	-	-	16.67	-	-	-	-
NYABITE	15.48	-	-	-	14.29	-	-	14.29	-	-	-	-
MOGONGA	12.38	10.87	10.43	11.90	12.38	13.33	11.74	9.52	9.52	11.90	15.00	14.29
NYAMACHE	14.29	12.10	10.00	14.29	11.90	11.56	10.87	11.90	11.90	-	12.38	14.29
KIBUYE	16.67	14.09	14.32	15.71	-	-	-	-	-	-	-	-
AHERO	-	-	-	-	-	-	-	-	-	-	-	16.67
KIBOSWA	16.19	15.71	14.09	15.24	-	-	-	-	-	-	-	-
SONDU	14.55	13.64	13.64	-	-	-	-	-	-	-	16.67	16.67
BONDO	15.00	15.40	17.50	17.50	14.07	15.00	15.00	16.50	16.50	16.50	16.50	-
OYUGIS	12.38	13.33	-	-	16.19	-	15.71	-	-	-	-	-
KEHACHA	15.91	13.64	-	-	-	-	-	-	-	-	-	-
KABARNET	15.00	-	15.00	15.00	15.56	15.00	-	-	-	-	-	-
NAKURU TWON	22.22	22.22	22.22	22.22	22.22	22.22	22.22	22.22	22.22	22.22	22.22	22.22
KAPSABET	13.04	13.04	13.04	14.29	15.22	15.22	16.67	-	-	-	-	-
KITALE	-	17.50	16.50	14.29	15.00	14.76	17.50	17.50	17.50	-	-	-
ELDORET	13.33	13.18	13.64	15.24	18.50	17.50	19.00	17.50	14.00	15.00	14.00	12.50
BURN FOREST	-	10.40	13.46	16.67	11.00	0.50	20.00	13.50	12.80	14.00	14.00	12.00
TURBO	11.43	11.15	10.00	11.43	11.90	17.62	14.00	17.20	16.80	12.00	12.00	-
KIPKAREN	12.86	12.03	12.00	15.00	16.50	17.50	17.50	17.50	16.50	10.40	13.95	10.80
ITEN	11.90	25.00	26.25	11.90	-	-	-	-	20.00	17.50	-	-
KAJIADO TOWN	20.00	20.00	-	20.00	20.00	20.00	20.00	20.00	25.00	20.00	25.00	-
KAPKATENY	12.52	13.67	13.56	14.29	17.14	17.14	17.14	17.62	14.29	11.90	11.90	-
BUNGOMA TOWN	14.29	13.97	13.64	15.24	13.64	-	-	-	-	14.55	13.64	14.29
KIMILILI	13.33	13.67	12.85	14.29	-	15.71	16.67	15.71	16.67	11.90	13.33	14.29
KAPSOKWONY	13.10	13.34	14.04	15.24	18.10	18.10	17.14	18.10	14.29	13.33	14.29	12.38
BUTERE	-	-	14.70	14.55	15.91	16.52	15.71	-	-	-	-	-
KAKAMEGA	13.97	13.97	13.64	15.24	15.24	16.29	15.91	13.64	13.64	12.73	13.64	13.64
MUMIAS	-	-	14.69	14.65	15.71	16.67	17.00	-	-	-	-	-
MUNDETA	14.29	14.29	14.29	14.29	15.24	15.24	15.24	14.29	14.29	-	15.24	14.29
CHEPTULA	14.29	14.29	14.29	15.24	15.24	-	14.29	13.33	-	15.24	14.29	14.29
Mbale	14.29	13.64	13.64	14.29	-	15.24	15.24	14.29	14.55	14.55	13.64	14.29
KAWANGWARE	22.00	20.00	20.00	20.00	30.00	21.05	19.05	20.00	19.05	18.10	18.28	20.00
BURMA	20.00	20.00	22.00	22.00	22.00	20.00	20.00	20.00	20.00	20.00	22.00	25.00
KIKOMBA	19.05	19.00	20.00	19.00	18.18	20.00	18.18	20.00	19.05	17.14	20.00	20.45
KANGEMI	19.49	20.50	19.05	19.00	20.00	20.00	20.00	20.00	18.18	19.05	20.00	20.45
KOROKOCHO	17.95	19.50	20.00	19.00	20.00	18.18	18.18	19.00	16.36	19.50	19.05	20.00
TOI	21.00	20.10	17.95	17.50	29.21	17.39	16.67	16.67	15.00	15.38	17.14	18.18
Overall Average Prices	16.92	16.60	15.88	16.00	16.32	15.84	15.48	15.79	15.45	15.09	15.43	15.93

- : Data not available
 ** Provisional results

Table 8(b): Average Monthly Retail Prices for Dry Maize in the Year 2008

	Ksh/kg											
Market	Jan	Feb	Mar	Apr	May	June	July	Aug	Sep	Oct	Nov	Dec
KIAMBU	20.0	20.0	20.0	19.2	25.0	30.0	26.3	30.0	30.0	30.0	35.0	26.3
LIMURU	17.5	17.5	17.5	22.5	25.0	26.3	.	27.5	30.0	30.0	32.5	30.0
THIKA	19.7	21.9	16.7	19.1	18.2	.	.	28.6	35.0	.	.	.
GATUNDU	17.9	23.8	23.8	19.1	19.1	.	.	30.4	36.4	31.8	.	.
MUTHITHI	19.1	14.6	.	21.1	24.9	24.0	30.0	30.0	32.5	35.0	35.0	.
MUKUYU	17.5	18.4	17.7	20.3	35.5	27.6	29.3	44.3	30.0	44.8	33.3	32.6
KIRIAINI	16.7	16.7	19.1	19.1	25.4	49.3	50.5	.	.	.	33.3	33.3
ENGINEER	15.0	.	15.9
NANYUKI	18.2	18.5	20.0	22.5	24.0	24.4	22.5	25.0	25.0	25.0	35.0	30.0
NYAHURURU	20.0	20.0	17.5	17.7	20.0	20.0	22.5
MARIAKANI	20.0	20.0	20.0	23.5	25.0	25.0	25.0	30.0	30.0	30.0	.	.
KALOLENI	20.0	20.0	20.7	24.5	25.0	25.0	25.0	25.0	30.0	30.0	.	.
MALINDI	27.8	27.8	27.8	26.9	28.4	30.0	.	28.0	28.0	30.0	30.0	.
KIBAUNI KILIFI	20.0	20.0	20.7	25.0	25.0	25.0	27.0	25.0	25.0	30.0	30.0	30.0
UKUNDA	22.5	.	30.0	36.0	36.0
MWEMBE TAYARI	25.0	20.0
MACKINON	.	.	30.0	30.0	34.0	30.0	30.0
SEGA	24.0
KONGOWEA	25.0	20.0
GARSEN	25.0	22.5	20.0	23.3	25.0	30.0	15.0
RUNYENJES	15.0	15.0	25.8	20.0	20.0	10.0	32.5
EMBU TOWN	17.5	18.8	15.0	20.0	20.0	.	.	30.0	35.0	26.3	.	.
SIKAGO	17.5	17.5	15.0	17.5	18.5	29.4	.	20.0	25.9	31.8	33.3	30.7
MWINGI	16.0	16.0	16.0	16.5	19.0	.	.	.	28.0	.	.	.
MIGGWAINI	.	.	14.0	14.0	17.8	21.0	.	.	28.0	30.0	.	.
KALUNDU	15.0	16.0	17.0
MACHAKOS TOWN	16.0	17.0	17.0	32.0	30.0
TALA	16.0	18.0	17.0	15.7	17.1	.	.	27.0	28.0	28.0	25.0	31.9
MAUA	.	.	21.3	25.0	31.7	.	.	37.5	37.5	30.0	30.0	30.0
KIANJAI	.	.	16.7	19.5	20.0	.	.	31.1	.	35.6	35.6	29.2
GAKOROMERE	13.6	16.0	12.7	24.3	18.3	.	18.2	.	.	27.3	31.8	.
WOTE	17.0	17.0	18.0	18.0	20.0	22.0	.	.	27.0	27.0	32.0	32.0
GARISA TOWN	.	.	25.0	.	30.3
DARAJA MBILI	17.3	20.5	18.6	20.0	23.0	24.6	22.7	24.1	24.1	31.8	31.8	.
KIBIRIGO	.	20.5	20.5
NYANGUSU	14.3	.	16.7	.	.	31.0	.	25.0
RIOCHANDA	.	16.8	21.4
NYABITE	.	16.0	20.5
MOGONGA	14.3	14.3	.	.	.	31.0
NYAMACHE	16.7	17.1	17.5	.	.	31.0
KIBUYE	.	17.3	18.2	21.4	29.6	27.3	22.7	.
AHERO	23.8	22.7	28.5	27.3	29.6	.
KIBOSWA	.	19.1	22.7	27.3	25.0	27.3	25.0	.
SONDU	20.5	20.5	.	.	27.3	27.3	31.8	.
BONDO	.	20.0	20.0	29.0	25.0	25.5	27.5	27.0	26.5	26.5	.	.
SIAYA	22.7	16.4	19.6	27.3	27.3	.
NGIYA	18.2	22.7	17.3	27.3	29.6	.
UNGUNJA	22.7	15.2	17.3	18.2	27.3	29.6	.
OYUGIS	.	18.6	20.0
KEHACHA	.	17.5	20.0	21.2	24.4	25.0
KABARNET	15.0	15.0	15.0	17.2	22.8	25.0	25.0	25.0	30.0	30.0	.	.
NAKURU TWON	24.2	21.7	22.2	22.2	22.2	.	27.8	27.8	27.8	27.8	27.8	27.8
KAPSABET	.	19.1	19.1	25.0	23.9	25.6	25.7	29.6	26.2	23.8	26.2	.
KITALE	.	17.5	17.5	25.0	26.7	24.1	25.8	28.6	29.5	26.2	.	.
ELDORET	20.0	15.4	15.0	15.5	19.4	22.0	22.0	26.5	31.8	25.0	20.0	20.0
BURN FOREST	12.5	15.0	15.0
TURBO	13.3	13.4	37.5	16.7	18.5	20.7	20.7	21.2	24.1	20.0	20.0	20.0
KIPKAREN	15.0	16.0	16.1	25.0	27.0	26.3	29.4	32.5	20.0	20.0	20.0	22.0
KAJIADO TOWN	25.0	20.0	.	25.0	35.0	21.7	25.0	.	25.0	40.0	40.0	40.0
BUNGOMA TOWN	16.7	16.7	16.7	16.6	20.4	26.0	25.1	25.0	25.0	27.5	30.0	29.0
KIMILILI	.	.	.	16.2	21.8	27.7	27.5	27.0	25.0	27.5	27.5	25.0
KAPSOKWONY	.	16.2	17.5
BUTERE	.	23.6	21.7	23.9	23.1	24.3	.	17.4	23.9	23.9	.	.
KAKAMEGA	20.5	18.2	19.6	21.4	23.6	.	26.4	19.1	22.7	27.3	.	.
MUMIAS	.	.	28.6	26.2	23.1	23.9	.	20.5	23.9	22.0	20.0	.
MUNDETA	19.1	16.7	16.7	19.1	26.2	26.2	.	26.2	28.6	28.6	28.6	.
CHEPTULA	23.8	16.7	16.7	21.4	26.2	26.2	26.2	26.2	28.6	30.0	28.6	.
Mbale	23.8	16.7	.	.	26.2	26.2	.	26.2	26.2	28.6	28.6	.
KAWANGWARE	21.0	22.0	25.0	46.5	30.0	29.3	29.3	30.0	33.3	33.0	33.3	33.3
BURMA	25.0	25.0	25.0	32.5	25.0	25.0	33.3	31.3	35.50	38.9	38.9	44.4
KIKOMBA	21.5	22.0	22.0	23.5	26.3	35.0	35.0	30.0	36.8	35.0	35.0	36.4
KANGEMI	22.0	22.5	23.0	23.0	27.3	30.0	30.0	30.0	31.0	31.0	33.3	33.3
KOROKOCHO	20.0	20.0	21.5	23.0	21.1	26.2	38.9	36.6	33.3	33.3	33.3	36.4
TOI	21.4	21.4	23.8	23.8	26.2	28.6	28.6	31.0	31.0	31.0	33.3	33.3
Overall Average Prices	19.7	18.7	20.2	21.4	23.8	25.9	26.7	29.6	30.9	30.5	30.1	29.7

Table 8(c): Average Monthly Retail Prices for Dry Beans Prices (2007)

	Ksh. Per Kg.											
MARKETS	Jan	Feb	Mar	April	May	June	July	Aug	Sep	Oct	Nov	Dec
KIAMBU	30.95	29.76	28.57	28.57	28.57	33.33	38.10	38.10	35.71	38.10	38.10	-
LIMURU	40.00	35.00	45.00	40.00	37.50	40.00	35.63	26.27	35.00	35.00	50.00	-
THIKA	36.36	40.00	38.10	38.10	38.10	40.00	36.36	36.36	37.50	42.86	45.00	-
GATUNDU	38.10	35.71	38.10	35.71	38.10	38.10	35.71	38.10	38.10	38.10	-	-
MUTHITHI	34.52	38.10	38.10	40.48	38.10	38.10	35.71	-	-	-	-	-
MUKUYU	34.96	33.33	38.10	38.10	34.17	33.33	33.33	33.33	-	-	-	38.10
KIRIAINI	42.86	40.91	42.86	42.86	42.86	40.48	40.48	40.48	40.48	-	-	40.91
ENGINEER	50.00	50.00	50.00	50.00	54.55	50.00	39.50	45.00	40.00	40.00	45.00	-
NYERI	42.86	40.48	41.86	42.86	42.86	47.62	47.62	38.10	47.62	47.62	-	-
ENDARASHA	47.62	47.62	47.62	60.00	57.14	-	-	-	-	-	-	-
KARATINA	40.91	45.45	31.82	33.33	40.00	47.62	38.10	40.48	60.00	50.00	50.00	-
GAKINDU	40.00	38.10	38.10	40.00	42.86	42.86	40.00	38.10	38.10	42.50	45.00	-
NANYUKI	40.00	38.18	36.36	38.89	44.44	44.44	40.00	40.00	40.00	31.82	44.44	-
NYAHURURU	32.00	40.02	40.91	41.67	40.00	40.00	42.86	42.86	-	-	-	-
MARIAKANI	40.00	40.00	40.00	38.10	40.00	40.00	40.00	40.00	40.00	40.00	40.00	40.00
KALOLENI	42.50	45.00	40.00	40.00	40.00	40.00	40.00	40.00	40.00	40.00	40.00	45.00
MALINDI	50.00	40.00	40.00	-	40.00	40.00	40.00	40.00	-	-	-	-
KIBAUJI KILIFI	40.00	-	40.00	40.00	40.00	40.00	40.00	40.00	40.00	40.00	-	45.00
UKUNDA	46.00	48.00	48.00	48.00	48.00	48.67	47.50	50.00	-	-	-	-
WUNDANYI	-	-	50.00	50.00	50.00	-	-	-	-	-	-	-
MWEMBE TAYARI	38.00	41.00	42.00	42.00	42.00	40.00	42.00	42.00	42.00	-	-	-
MACKINON	35.00	35.00	-	-	-	-	-	-	-	-	-	-
SEGA	45.00	45.00	40.00	42.00	45.00	-	-	-	-	-	-	-
KONGOWEA	35.00	35.00	36.00	36.00	38.00	40.00	38.00	-	-	-	-	-
HOLA	40.00	40.00	55.00	45.00	-	-	-	-	-	-	-	-
GARSEN	-	40.00	40.00	40.00	-	-	50.00	40.00	40.00	-	-	-
BURA TANA	50.00	50.00	45.00	40.00	40.00	-	-	-	-	-	-	-
RUNYENJES	37.50	35.00	37.50	35.00	35.00	30.00	30.00	30.00	35.00	40.00	37.50	37.50
EMBU TOWN	37.50	35.00	30.00	37.50	42.50	33.33	30.00	35.00	32.50	40.00	40.00	50.00
SIKAGO	30.00	30.00	35.00	30.00	27.50	-	30.00	30.00	27.50	45.00	45.00	50.00
MWINGI	35.00	35.00	35.00	20.00	-	35.00	35.00	25.00	35.00	-	-	-
MIGGWAINI	27.27	22.73	22.73	40.00	25.00	25.00	25.00	25.00	-	40.00	45.00	-
MACHAKOS TOWN	38.89	-	35.00	36.84	40.00	40.00	35.00	40.00	40.00	40.00	-	-
TALA	35.00	24.44	25.81	27.14	28.57	40.00	38.10	33.33	38.00	38.00	-	-
MAUA	-	35.00	35.00	31.25	33.75	30.00	43.75	-	-	-	-	-
KIANJAI	30.00	27.78	27.78	31.25	24.44	24.44	35.56	-	-	-	-	-
GAKOROMERE	35.00	30.46	36.36	36.36	36.36	36.36	36.36	36.36	36.36	36.36	40.00	40.00
WOTE	35.00	35.00	35.00	40.00	40.00	35.00	40.00	42.00	42.00	45.00	-	45.00
GARISA TOWN	45.75	47.06	47.06	47.06	47.06	44.44	47.06	-	47.06	-	-	-
DARAJA MBILI	28.57	27.27	21.82	33.33	33.33	30.43	27.72	34.09	38.10	33.33	30.95	38.10
KIBIRIGO	32.67	29.55	-	-	-	38.10	38.10	-	-	-	-	-
KEROKA	-	29.55	-	-	-	-	-	-	-	-	-	-
NYANGUSU	35.00	32.31	-	35.71	21.73	22.82	19.57	23.81	23.81	23.81	28.57	26.19
RIOCHANDA	21.45	-	-	-	28.57	-	-	30.95	-	-	-	-
NYABITE	36.91	-	-	-	33.33	-	-	33.33	-	-	-	-
MOGONGA	33.33	24.00	25.00	28.57	21.43	23.16	23.00	-	30.95	28.57	30.95	30.95
NYAMACHE	30.95	26.79	28.00	-	33.33	30.20	28.13	26.19	30.95	-	28.57	28.57
KIBUYE	38.10	36.36	39.77	45.24	-	-	-	-	-	-	-	-
AHERO	-	-	-	-	-	-	-	-	-	-	47.62	47.62
KIBOSWA	40.48	37.73	41.76	52.38	-	-	-	-	-	-	-	-
SONDU	33.33	33.33	30.95	-	-	-	-	-	-	-	42.86	47.62
BONDO	45.45	46.36	46.36	50.00	34.10	45.45	45.45	54.55	59.09	54.55	54.55	-
OYUGIS	35.71	35.57	-	-	40.48	35.71	35.71	-	-	-	-	-
KEHACHA	45.00	50.00	-	-	-	-	-	-	-	-	-	-
KABARNET	30.00	-	40.00	40.00	40.00	40.00	-	-	-	-	-	-
NAKURU TWON	33.33	33.33	44.44	38.89	33.33	44.44	44.44	44.44	33.33	33.33	33.33	30.00
KAPSABET	44.99	39.07	37.35	54.55	39.13	39.13	19.05	-	-	-	-	-
KITALE	-	33.33	38.10	47.62	38.10	38.10	34.09	33.33	28.57	-	-	-
ELDORET	38.48	36.36	36.36	31.82	40.91	38.10	40.91	45.45	40.00	45.00	45.45	45.00
BURN FOREST	35.42	32.00	29.63	-	47.62	47.62	50.00	45.45	36.36	36.36	40.91	40.91
TURBO	36.60	34.42	30.00	35.71	38.10	33.33	30.00	22.73	30.00	-	34.09	-
KIPKAREN	33.33	32.58	36.36	38.10	36.36	36.61	31.82	32.50	32.50	36.36	35.68	36.36
ITEN	38.10	38.10	38.10	-	-	-	-	-	50.00	35.00	-	-
KAJIADO TOWN	50.00	45.00	-	40.00	44.44	44.44	44.81	40.00	40.00	20.00	60.00	-
BUNGOMA TOWN	38.10	36.76	40.00	36.36	47.62	-	-	-	-	36.36	36.36	36.36
KIMILILI	28.57	30.93	30.84	30.95	-	33.33	30.00	26.19	28.57	33.33	36.36	40.91
KAPSOKWONY	32.86	33.99	36.07	38.10	38.10	38.10	38.10	34.85	-	33.33	36.36	36.36
BUTERE	-	-	29.55	35.57	34.09	30.43	33.33	-	-	-	-	-
KAKAMEGA	34.90	37.23	36.36	42.86	38.10	37.23	29.55	40.91	45.45	47.73	45.45	45.45
MUMIAS	-	-	37.37	36.23	31.41	33.33	-	-	-	-	-	-
MUNDETA	39.13	39.13	38.10	38.10	42.86	38.10	38.10	38.10	38.10	-	38.10	52.38
CHEPTULA	39.13	34.78	38.10	38.10	35.71	-	38.10	38.10	-	47.62	40.48	47.62
Mbale	41.30	41.30	39.13	42.86	-	45.24	40.91	45.45	45.45	45.45	54.55	54.55
KAWANGWARE	42.11	40.00	40.00	40.00	30.00	38.10	40.00	40.00	45.00	43.64	45.00	20.45
BURMA	45.00	42.00	80.00	40.00	40.00	40.00	40.00	40.00	40.00	42.00	42.00	45.00
KIKOMBA	41.03	40.00	40.00	38.10	42.11	40.00	39.05	38.10	36.36	38.10	40.00	40.00
KANGEMI	42.50	40.82	40.20	40.00	40.00	38.10	41.00	40.00	40.91	40.91	40.48	45.24
KOROKOCHO	40.00	40.00	40.00	40.00	38.10	39.05	40.00	40.00	38.10	40.00	40.00	40.00
TOI	40.82	40.00	40.40	40.00	40.00	38.10	38.28	38.10	40.00	42.86	21.43	45.00
Overall Average Prices	38.06	37.17	38.32	39.27	38.23	37.87	37.19	37.22	38.64	39.24	40.88	40.97

- : Data not available

Table 8(d): Average Monthly Retail Prices for Dry Beans Prices (2008)

Market	Ksh per kg											
	Jan	Feb	Mar	Apr	May	Jun	Jul	Aug	Sep	Oct	Nov	Dec
KIAMBU	38.1	35.7	35.5	60.0	71.7	75.0	57.5	75.0	80.0	75.0	80.0	75.0
LIMURU	75.0	60.0	60.0	70.0	75.0	70.0	.	75.0	75.0	75.0	75.0	70.0
THIKA	55.0	54.6	54.6	45.5	60.0	.	.	.	80.0	.	.	.
GATUNDU	39.3	45.2	42.9	47.6	38.1	.	.	76.2	72.7	76.2	.	.
MUTHITHI	57.1	52.4	.	55.4	61.8	56.7	65.0	70.0	75.0	100.0	75.0	.
MUKUYU	38.1	38.1	56.1	59.1	54.8	59.1	58.1	59.1	59.1	48.9	70.5	74.6
KIRIAINI	47.8	47.8	63.6	.	60.9	60.9	72.2	.	.	.	76.2	76.2
ENGINEER	45.0	.	57.1
NANYUKI	40.0	42.5	50.0	65.0	46.7	69.8	70.8	63.6	80.0	40.8	80.0	80.0
NYAHURURU	39.1	50.0	56.2	63.8	67.5	38.3	60.0
MARIAKANI	50.0	60.0	60.0	60.0	63.3	70.0	70.0	70.0	80.0	80.0	.	.
KALOLENI	50.0	60.0	60.0	60.0	63.3	70.0	70.0	80.0	.	80.0	.	.
MALINDI	70.6	75.0	68.2	72.2	76.4	78.2	60.0	75.0	70.0	80.0	80.0	75.0
KIBAUNI KILIFI	60.0	60.0	65.0	53.3	66.7	70.0	68.0	68.0	70.0	80.0	.	.
UKUNDA	50.0	.	50.0	63.0	68.0
MWEMBE TAYARI	60.0	48.0
MACKINON	.	.	65.0	62.0	65.0	70.0	70.0
SEGA	55.0
KONGOWEA	70.0	55.0
GARSEN	50.0	55.0	60.0	60.0	60.0	70.0	65.0
RUNYENJES	45.0	41.3	68.8	55.0	57.5	30.0	80.0
EMBU TOWN	40.0	40.0	50.0	56.7	60.0	50.0	.	70.0	90.0	55.0	.	.
SIKAGO	40.0	42.5	50.0	55.0	53.6	66.8	.	20.0	41.4	90.9	81.8	71.4
MWINGI	40.0	40.0	50.0	60.0	50.0	.	.	.	56.0	.	.	.
MIGGWAINI	.	.	40.0	55.0	55.0	55.0	.	.	63.0	70.0	.	.
KALUNDU	50.0	58.0	70.0
MACHAKOS TOWN	55.0	45.0	45.0	70.0	47.7
TALA	27.0	40.0	40.0	55.7	57.1	.	.	70.0	70.0	68.0	70.0	70.0
MAUA	.	.	62.5	67.8	47.5	.	.	81.3	81.3	81.5	90.0	90.0
KIANJAI	.	.	50.0	56.7	50.0	.	.	66.7	.	83.3	.	35.1
GAKOROMERE	36.4	40.9	55.0	36.7	49.6	.	60.6	.	.	63.6	75.0	.
WOTE	50.0	52.5	60.0	63.0	64.5	61.5	.	.	65.0	65.0	80.0	80.0
GARISA TOWN	.	.	66.7	.	70.8
DARAJA MBILI	40.9	54.6	46.4	61.4	48.9	39.1	41.1	50.0	56.8	50.0	50.0	.
KIBIRIGO	.	45.5	47.6
NYANGUSU	28.6	.	42.9	.	.	54.6	.	36.4
RIOCHANDA	.	46.2	54.6
NYABITE	.	42.3	54.6
MOGONGA	38.1	36.4	.	.	.	54.6
NYAMACHE	27.3	47.6	40.2	.	.	52.3
KIBUYE	.	65.9	68.2	68.2	72.7	59.5	45.5	.
AHERO	61.9	61.9	72.5	52.4	56.8	.
KIBOSWA	.	77.3	47.7	72.7	59.1	68.2	45.5	.
SONDU	52.4	52.4	.	.	54.6	59.1	45.5	.
BONDO	.	85.0	85.0	69.2	85.0	87.5	80.0	80.0	80.0	90.0	.	.
SIAYA	54.6	53.0	90.9	81.8	90.9	.
NGIYA	47.2	54.6	68.2	90.9	68.2	.
UNGUNJA	45.5	52.3	51.1	72.7	63.6	68.2	.
OYUGIS	.	66.4	71.4
KEHACHA	.	54.6	68.2	66.7	59.1	54.6
KABARNET	50.0	50.0	50.0	59.6	72.3	75.0	75.0	60.0	37.5	75.0	.	.
NAKURU TWON	52.2	38.9	38.9	51.1	36.1	38.9	33.3	33.3	33.3	33.3	66.7	66.7
KAPSABET	.	71.4	68.2	72.7	71.0	60.9	46.5	68.2	72.7	72.7	68.2	.
KITALE	.	54.1	54.6	68.2	74.4	68.2	49.5	57.1	54.6	.	.	.
ELDOROT	59.1	43.2	68.2	75.2	78.0	63.0	62.5	62.5	70.0	65.0	65.0	70.0
BURN FOREST	68.2	68.2	60.9
TURBO	42.5	53.8	.	70.0	73.8	67.0	53.0	50.0	50.0	50.0	65.0	67.5
KIPKAREN	45.5	54.6	54.6	68.2	62.5	60.6	37.0	54.6	60.0	63.6	63.6	63.6
KAJADO TOWN	60.0	70.0	80.0	36.0	67.5	66.7	50.0	60.0	70.0	80.0	80.0	80.0
BUNGOMA TOWN	47.6	61.9	68.2	.	60.6	64.8	65.2	52.4	70.0	70.0	70.0	70.0
KIMILILI	.	.	46.7	67.1	66.7	80.0	60.0	70.0	57.5	65.0	60.0	.
KAPSOKWONY	.	40.5	47.0
BUTERE	55.8	56.5	50.8	73.9	70.5	50.3	.	54.6	68.2	68.2	.	.
KAKAMEGA	54.6	68.2	59.1	50.0	36.4	.	59.1	59.1	63.6	.	.	.
MUMIAS	.	.	.	70.5	70.1	58.4	.	50.0	68.2	38.1	40.0	.
MUNDETA	71.4	71.4	71.4	71.4	61.9	61.9	.	71.4	71.4	83.3	71.4	.
CHEPTULA	65.0	71.4	71.4	71.4	71.4	71.4	71.4	76.2	76.2	83.3	76.2	.
Mbale	.	65.2	.	71.4	71.4	64.3	.	71.4	71.4	76.2	76.2	.
KAWANGWARE	45.0	50.0	60.0	68.0	70.0	72.7	53.1	80.0	80.0	86.4	90.5	90.5
BURMA	45.0	50.0	50.0	60.0	70.0	80.0	80.0	81.8	.	83.3	83.3	75.0
KIKOMBA	48.0	50.0	60.0	65.0	80.0	75.0	83.3	88.9	88.9	86.0	88.9	81.8
KANGEMI	45.0	55.0	65.0	70.0	75.0	80.0	80.0	80.0	85.7	85.7	90.5	90.5
KOROKOCHO	43.5	45.0	50.0	62.5	62.5	72.7	72.7	90.0	90.0	87.0	87.0	79.2
TOI	47.6	50.0	63.6	72.7	76.2	76.2	76.2	85.7	85.7	85.7	90.5	90.5
Overall Average Prices	50.1	52.9	56.8	60.9	64.2	63.3	60.3	66.0	68.7	69.8	72.3	69.1

Table 9: Export of Coffee, Tea and Horticultural Produce

TABLE 9: EXPORTS OF COFFEE, TEA AND HORTICULTURAL PRODUCE

Month	COFFEE *		TEA		HORTICULTURE	
	QUANTITY	VALUE	QUANTITY	VALUE	QUANTITY	VALUE
	(MT)	(KSh. Million)	(MT)	(KSh. Million)	(MT)	KSh. Million
Mar-08	3,989.2	1,071.0	27,943.7	4,308.3	18,927	6,538
Apr-08	4,611.3	1,107.7	40,724.4	5,464.0	17,969	4,257
May-08	4,820.5	1,128.1	30,518.6	4,525.4	16,940	4,052
Jun-08	3,602.7	838.6	31,644.4	4,917.2	15,312	3,480
Jul-08	3,158.5	769.2	40,370.6	6,667.2	15,262	3,882
Aug-08	3,094.6	759.0	33,043.3	5,811.1	13,996	3,997
Sep-08	3,348.0	805.0	24,829.6	4,986.1	14,928	3,524
Oct-08	2,774.5	718.2	31,955.8	6,400.4	15,579	3,968
Nov-08	3,421.2	909.6	28,369.5	5,140.0	14,740	4,029
Dec-08	2,680.4	648.2	39,089.5	6,251.1	14,027	4,040
Jan-09	4,096.6	1,013.7	34,946.6	6,138.5	15,879.16	4,662
Feb-09	4,308.8	1,200.0	27,198.9	5,110.6	16,070.35	4,121
Mar-09	-	-	-	-	17,526.77	4,339

Source: Kenya Revenue Authority

- Figures not available

*Unroasted Coffee

** Provisional

MT denotes Metric tonnes

Table 10: Monthly Exports of Horticultural Products

Months	CUT FLOWERS				FRUITS				VEGETABLES			
	2008**		2009**		2008**		2009**		2008**		2009**	
	QUANTITY (MT)	VALUE (KSh. Million)	QUANTITY (MT)	VALUE (KSh. Million)	QUANTITY (MT)	VALUE (KSh. Million)	QUANTITY (MT)	VALUE (KSh. Million)	QUANTITY (MT)	VALUE (KSh. Million)	QUANTITY (MT)	VALUE (KSh. Million)
January	8,494.94	5,288.07	7,842.90	3,311.00	533.40	63.05	2,382.74	370.06	7,524.88	1,332.79	5,653.51	981.41
February*	10,178.52	6,806.08	8,204.71	2,964.04	1,431.75	111.22	2,624.70	238.52	7,290.64	2,802.23	5,240.94	918.89
March	9,116.38	4,836.41	8,362.14	2,867.90	2,476.80	203.31	2,548.68	209.17	7,334.14	1,498.72	6,615.95	1,262.18
April	8,100.43	2,737.35			2,263.94	180.92			7,604.86	1,338.55		
May	8,120.99	2,798.79			1,727.73	130.44			7,090.86	1,122.58		
June	6,785.27	2,173.12			1,718.46	169.36			6,808.71	1,137.46		
July	6,083.05	2,072.24			2,573.05	686.15			6,605.48	1,123.60		
August	6,239.22	2,766.14			1,653.59	199.49			6,103.07	1,031.84		
September	6,994.05	2,246.42			1,031.31	119.54			6,902.52	1,158.22		
October	8,026.54	2,596.09			484.62	56.18			7,068.08	1,315.83		
November	7,909.34	2,773.86			602.77	65.60			6,227.65	1,189.57		
December	7,604.69	2,876.41			626.40	85.97			5,796.13	1,077.50		
Total	93,653.42	39,970.99			17,123.82	2,071.24			82,357.02	16,128.90		

Source: Horticultural Crops Development Authority

- data not available

** Figures subject to revision

Table 11: Kenya's External Trade, January 2008 – January 2009

KSh million

MONTH	Domestic Exports	Re-Exports	Total Exports	Total Imports	Volume of Trade	Home use Imports
2008						
February	31,277.01	1,050.16	32,327.17	58,051.43	90,378.61	56,707.94
March	25,654.53	1,460.93	27,115.46	53,200.79	80,316.25	52,191.67
April	27,893.33	1,292.86	29,186.19	54,785.45	83,971.64	51,389.44
May	24,436.30	1,303.31	25,739.61	56,877.43	82,617.03	57,151.43
June	23,832.87	1,477.07	25,309.94	49,957.26	75,267.20	53,371.94
July	28,667.31	1,671.58	30,338.89	70,300.09	100,638.98	60,557.64
August	27,487.90	2,265.53	29,753.42	72,644.67	102,398.09	72,423.12
September	26,618.40	1,869.18	28,487.58	74,773.03	103,260.61	67,656.83
October	29,556.05	2,984.15	32,540.20	74,855.83	107,396.03	75,450.09
November	27,434.29	1,624.36	29,058.65	68,387.90	97,446.55	66,706.10
December	27,405.44	1,938.39	29,343.83	68,567.89	97,911.72	67,312.92
2009						
January	26,120.79	1,238.96	27,359.75	66,177.18	93,536.93	2,707.33
February	27,362.15	1,314.05	28,676.20	60,563.13	89,239.33	60,327.13

Source: Customs Department

* Provisional

Table 12: Major Destinations of Domestic Exports, January 2008 – January 2009

KSh Million											
Month	Uganda	Tanzania	United Kingdom	Pakistan	Netherlands	Egypt	Germany	Rwanda	USA	United Arab Emirates	France
2008											
February	3,292.99	1,973.99	3,853.97	1,030.52	2,878.64	1,306.73	666.82	743.15	1,975.69	804.75	372.62
March	3,063.24	1,756.01	3,118.21	683.00	2,256.37	1,545.47	591.34	505.26	1,371.59	784.62	389.71
April	3,656.76	2,130.95	2,892.92	924.21	2,044.85	2,102.05	528.64	502.74	1,634.07	845.66	429.07
May	2,564.19	1,873.91	2,998.92	1,306.61	2,005.69	663.55	421.87	439.56	1,509.75	623.16	305.94
June	2,409.80	2,173.29	2,867.54	1,171.98	2,100.71	668.94	447.39	556.14	1,661.92	517.39	362.69
July	3,810.84	2,371.58	3,187.84	2,042.81	1,692.87	990.34	372.82	792.28	1,590.02	522.07	525.91
August	3,031.60	2,402.28	2,934.22	1,264.65	1,650.31	1,483.11	301.43	947.01	2,231.04	416.56	434.38
September	3,170.79	2,493.71	2,961.86	973.01	1,812.64	1,148.08	539.78	729.96	1,911.48	435.57	441.95
October	3,614.23	2,511.91	3,603.99	1,115.82	2,533.31	1,645.78	640.78	917.09	1,654.79	539.40	447.12
November	3,011.92	2,335.70	3,053.52	1,050.66	2,136.05	1,230.38	474.03	545.11	1,883.01	385.11	314.50
December	3,504.30	2,191.03	2,920.00	1,504.05	2,178.31	1,902.93	533.73	581.25	1,779.29	448.55	341.86
2009											
January	3,361.59	2,369.01	2,961.80	2,071.33	2,468.70	916.17	730.97	664.56	1,158.51	482.26	405.98
February	4,032.20	1,841.43	3,172.60	1,265.17	2,527.16	847.16	662.15	692.77	1,742.88	581.83	489.42

Source: Customs Department

* Provisional

Table 13: Major Origins of Imports, January 2008 – January 2009

KSh Million											
Month	United Arab Emirates	United Kingdom	South africa	Saudi Arabia	Japan	India	USA	Germany	Netherlands	France	China
2008											
February	9,510.89	2,921.46	3,210.71	945.31	3,482.08	5,138.42	2,033.86	2,603.10	1,327.21	1,356.22	4,770.77
March	6,839.39	1,746.01	3,066.48	4,363.49	3,487.52	6,476.49	2,984.79	1,866.69	577.86	1,042.04	3,428.89
April	12,274.48	1,749.26	3,155.40	2,319.25	3,484.89	5,981.93	2,910.16	1,921.65	1,369.27	1,020.72	3,311.61
May	10,534.04	1,873.07	3,005.93	1,302.39	3,035.20	9,281.27	3,606.34	1,482.98	885.92	879.66	4,430.19
June	3,515.33	1,835.13	3,312.94	844.12	2,904.38	6,384.15	1,442.66	1,583.49	1,066.24	888.67	5,213.39
July	19,339.13	1,774.91	3,886.96	2,048.11	4,811.18	7,921.31	2,628.53	2,189.02	652.05	1,156.11	4,678.81
August	6,507.93	2,568.88	3,314.31	2,488.28	4,062.72	10,098.94	1,876.34	2,707.15	1,545.58	1,007.23	4,869.16
September	12,326.45	1,873.49	3,641.87	4,813.22	3,605.69	8,705.56	2,108.17	3,166.97	935.69	1,385.47	5,399.50
October	7,753.46	3,853.50	4,723.11	1,414.43	3,677.07	7,769.47	2,538.19	2,402.06	921.52	1,470.71	6,774.62
November	5,247.67	2,601.72	7,604.02	996.78	3,517.57	9,794.27	2,183.26	2,651.44	1,781.43	1,655.30	7,194.15
December	6,637.34	3,015.16	3,829.78	3,147.95	4,773.55	6,200.32	1,739.14	2,519.94	1,349.98	2,548.16	7,327.06
2009											
January	3,314.77	2,370.63	4,112.81	1,966.25	4,521.63	6,572.44	8,392.77	2,255.11	1,962.77	1,530.99	5,802.14
February	5,641.51	2,059.46	4,738.94	2,806.33	2,265.48	5,370.46	2,125.21	1,553.16	2,826.51	1,566.75	6,344.45

Source: Customs Department

* Provisional

Table 12 (a): Domestic Exports by Broad Economic Category

DESCRIPTION	2007	2008											2009	
	Total	March	Apr	May	June	July	August	September	October	November	December	Total	January	February
FOOD AND BEVERAGES	105,765	10,261	12,176	10,249	10,155	12,300	10,468	9,804	11,967	10,732	11,103	129,916	11,440	10,534
INDUSTRIAL SUPPLIES (Non-Food) ..	66,441	6,846	6,967	6,396	6,022	8,659	10,001	8,904	8,833	8,429	7,332	92,204	6,688	8,272
FUEL AND LUBRICANTS	9,346	352	487	378	332	268	45	423	468	523	607	5,949	386	319
MACHINERY & OTHER CAPITAL EQUIPMENT ..	4,427	701	674	526	225	324	323	316	473	300	729	5,546	588	351
TRANSPORT EQUIPMENT	3,472	235	336	232	430	385	260	264	300	406	304	3,657	317	537
CONSUMER GOODS NOT ELSEWHERE SPECIFIED ..	72,161	7,256	7,255	6,654	6,661	6,730	6,387	6,904	7,513	7,041	7,323	85,724	6,701	7,347
GOODS NOT ELSEWHERE SPECIFIED ..	7	4.00	0	0	8	0	4	3	2	3	7	32	1	2
TOTAL	261,619	25,655	27,893	24,436	23,833	28,666	27,488	26,618	29,556	27,434	27,405	323,029	26,121	27,362
PERCENTAGE SHARES:														
Food and Beverages	40.43	40.00	43.65	41.94	42.61	42.91	38.08	36.83	40.49	39.12	40.51	40.22	43.80	38.50
Industrial Supplies (Non-Food)	25.40	26.68	24.98	26.17	25.27	30.21	36.38	33.45	29.89	30.72	26.75	28.54	25.60	30.23
Fuel and Lubricants	3.57	1.37	1.74	1.55	1.39	0.93	0.16	1.59	1.58	1.91	2.21	1.84	1.48	1.17
Machinery and other Capital Equipment ..	1.69	2.73	2.41	2.15	0.94	1.13	1.18	1.19	1.60	1.09	2.66	1.72	2.25	1.28
Transport Equipment	1.33	0.92	1.20	0.95	1.80	1.34	0.95	0.99	1.02	1.48	1.11	1.13	1.21	1.96
Consumer Goods not elsewhere specified	27.58	28.28	26.01	27.23	27.95	23.48	23.24	25.94	25.42	25.67	26.72	26.54	25.65	26.85
Goods not elsewhere specified	0.00	0.02	0.00	0.00	0.03	0.00	0.01	0.01	0.01	0.01	0.03	0.01	0.00	0.01
TOTAL	100	100	100	100	100	100	100	100	100	100	100	100	100	100

Source: Annual Trade Report - Customs & Excise Dept.

* Provisional

- Data being verified

Table 13 (a): Imports by Broad Economic Category

Million KSh

DESCRIPTION	2007		2008										2009	
	Total	March	Apr	May	June	July	August	Sept	Oct	Nov	Dec	Total	January	February
FOOD AND BEVERAGES	42,483.1	5,313.00	3,662.9	2,712.5	2,476.0	2,258.0	3,393.0	4,125.0	6,822.0	9,198.0	5,005.0	53,409.4	4,342.0	3,980.0
INDUSTRIAL SUPPLIES (Non-Food) ..	193,819.3	14,987.00	17,444.9	15,832.1	19,185.0	19,453.0	20,072.0	21,890.8	25,880.0	23,454.0	20,522.0	237,249.7	21,518.0	15,694.9
FUEL AND LUBRICANTS	126,911.2	13,135.00	15,706.1	18,042.1	11,728.0	25,978.0	23,492.0	23,862.3	17,980.0	11,433.0	11,423.0	205,859.5	10,104.0	11,012.5
MACHINERY & OTHER CAPITAL EQUIPMENT ..	97,336.5	10,263.00	7,651.6	8,834.4	7,517.0	9,921.0	9,434.0	13,646.9	10,559.0	11,112.0	18,743.0	127,118.9	11,035.0	12,177.0
TRANSPORT EQUIPMENT	97,427.0	5,413.00	6,575.0	7,225.9	5,035.0	8,018.0	11,963.0	4,487.0	8,263.0	7,855.0	7,812.0	86,574.9	13,396.0	9,339.6
CONSUMER GOODS NOT ELSEWHERE SPECIFIED ..	44,883.8	4,072.00	3,738.4	4,057.6	4,005.0	4,375.0	4,078.0	4,688.4	5,273.0	5,309.0	4,899.0	53,464.3	5,731.0	5,352.0
GOODS NOT ELSEWHERE SPECIFIED ..	2,259.7	18.00	6.6	172.9	11.0	0.0	213.0	207.0	79.0	27.0	164.0	903.4	51.0	3,007.1
TOTAL	605,120.6	53,201	54,785	56,877	49,957	70,003	72,645	74,773	74,856	68,388	68,568	764,580.2	66,177	60,563
PERCENTAGE SHARES:														
Food and Beverages	7.02	9.99	6.69	4.77	4.96	3.23	4.67	5.52	9.11	13.45	7.30	6.99	6.56	6.57
Industrial Supplies (Non-Food)	32.03	28.17	31.84	27.84	38.40	27.79	27.63	29.28	34.57	34.30	29.93	31.03	32.52	25.91
Fuel and Lubricants	20.97	24.69	28.67	31.72	23.48	37.11	32.34	31.91	24.02	16.72	16.66	26.92	15.27	18.18
Machinery and other Capital Equipment ..	16.09	19.29	13.97	15.53	15.05	14.17	12.99	18.25	14.11	16.25	27.33	16.63	16.67	20.11
Transport Equipment	16.10	10.17	12.00	12.70	10.08	11.45	16.47	6.00	11.04	11.49	11.39	11.32	20.24	15.42
Consumer Goods not elsewhere specified	7.42	7.65	6.82	7.13	8.02	6.25	5.61	6.27	7.04	7.76	7.14	6.99	8.66	8.84
Goods not elsewhere specified	0.37	0.03	0.01	0.30	0.02	0.00	0.29	0.28	0.11	0.04	0.24	0.12	0.08	4.97
TOTAL	100.00	100.00	100.00	100.00	100.00	100.00	100.00	97.50	100.00	100.00	100.00	100.00	100.00	100.00

Source: Annual Trade Report - Customs & Excise Dept.

* Provisional

- Data being verified

Table 14(a): Local Electricity Generation by Source

MONTH	HYDRO	GEO - THERMAL	THERMAL	TOTAL
Apr-08	280.57	87.56	122.62	490.76
May-08	291.87	87.19	118.43	497.49
Jun-08	252.63	87.74	122.54	462.91
Jul-08	250.97	88.33	140.72	480.02
Aug-08	269.21	80.39	132.15	481.75
Sep-08	257.53	78.51	121.65	457.69
Oct-08	268.32	85.26	122.15	475.73
Nov-08	262.30	85.44	113.45	461.18
Dec-08	252.08	106.72	112.42	471.22
Jan-09	231.75	116.58	127.48	475.81
Feb-09	215.16	99.77	113.16	428.09
Mar-09	237.11	106.07	129.83	473.01
Apr-09	268.32	85.26	122.15	475.73

Source: KPL&C

Fig 9: Electricity Generation by Source

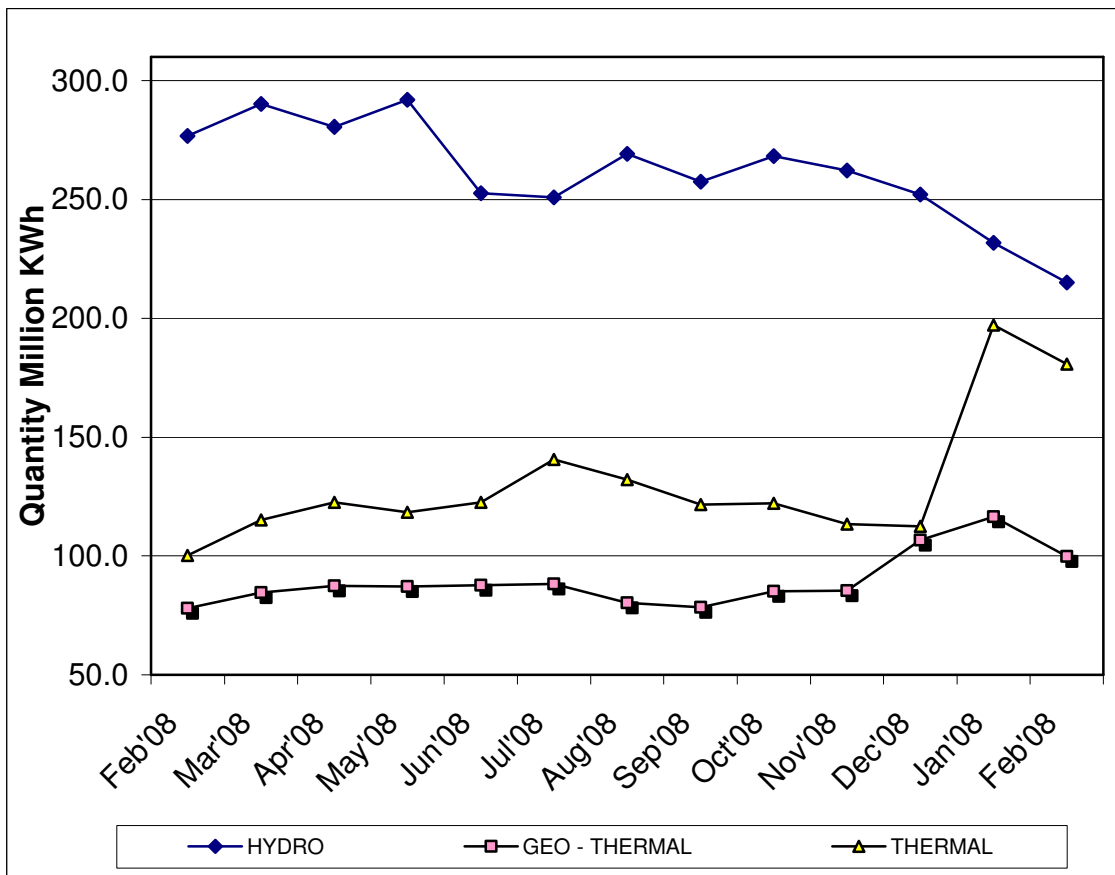


Table 14(b): Generation and Consumption of Electricity

Month	GENERATION						CONSUMPTION				
	LOCAL GENERATION	IMPORTS			EPPS (Aggreko)	TOTAL GENERATION	TOTAL KPLC SALES	RURAL ELECTRIFICATION	EXPORTS TO UGANDA	TOTAL DOMESTIC CONSUMPTION*	POWER LOSSES
		UGANDA	TANZANIA	Total Imports							
2008*											
April	490.8	1.1	0.10	1.2	46.9	538.8	415.1	19.78	10.41	434.9	-93.5
May	497.5	1.6	0.11	1.7	57.7	556.6	426.5	20.48	7.95	447.0	-101.6
June	462.9	1.7	0.11	1.8	73.6	538.3	444.1	21.17	3.64	465.3	-69.4
July	480.0	1.6	0.12	1.7	82.4	564.2	402.5	20.73	3.59	423.3	-137.3
August	481.8	2.1	0.11	2.2	77.6	561.5	448.1	21.90	2.14	470.0	-89.4
September	457.7	2.1	0.10	2.2	75.5	535.4	427.8	20.16	2.27	448.0	-85.1
October	475.7	2.3	0.11	2.4	75.5	553.6	423.9	20.96	3.07	444.9	-105.6
November	461.2	2.5	0.10	2.6	75.5	539.4	429.3	19.98	3.05	449.3	-87.0
December	471.2	2.5	0.10	2.6	62.3	536.2	404.8	18.5	2.31	423.3	-110.6
2009											
January	475.8	2.3	0.00	2.3	69.8	547.9	432.1	22.7	2.20	454.8	-90.9
February	478.1	2.1	0.00	2.1	67.6	547.7	418.0	20.1	2.63	438.0	-107.0
March	473.0	2.8	0.09	2.9	75.2	551.0	394.7	19.9	2.41	414.6	-134.0
April	475.7	2.3	0.11	2.4	75.5	553.6	417.9	20.4	3.07	438.3	-112.2

NB: Difference between amount purchased from KENGEN and imported from Uganda and consumption reflect transmission, distribution and commercial losses

*Provisional

** Excludes exports

Fig 10: Electricity Generation Consumption and Power Losses

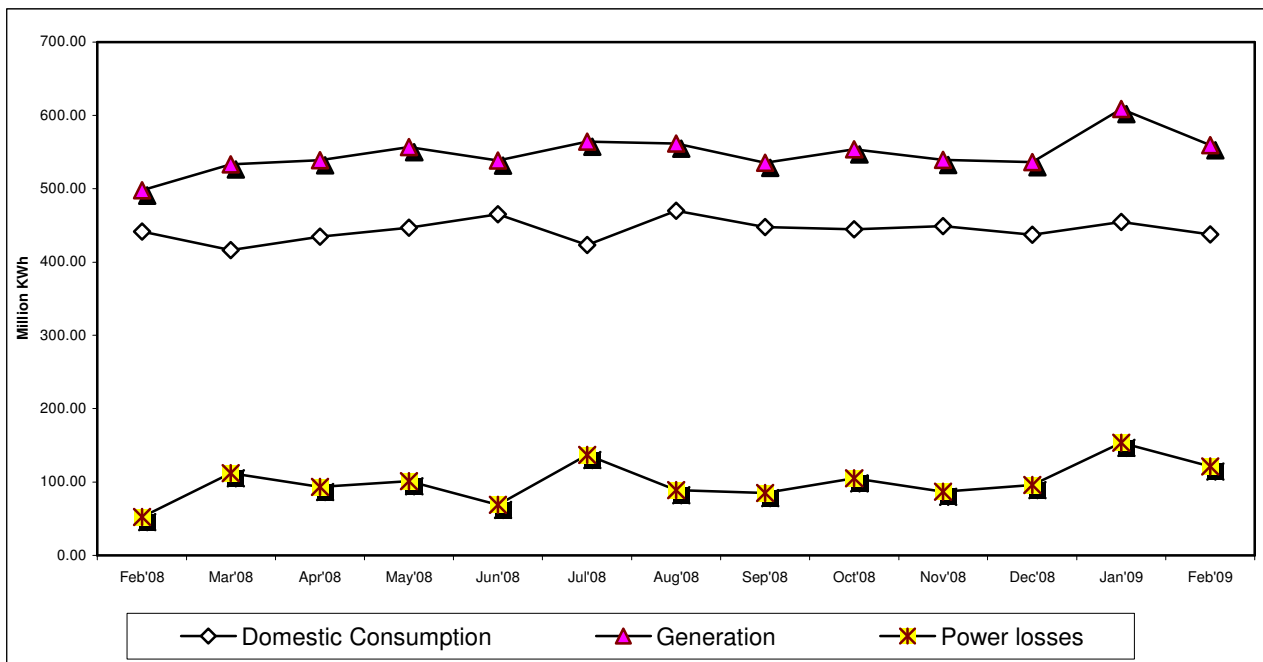


Table 14 (c): Consumption of Petroleum Fuels

PERIOD									'000 MT
	LIGHT DIESEL OIL	JET FUEL	FUEL OILS	MOTOR SPIRIT	ILLUMINATING KEROSENE	HEAVY DIESEL OIL	L.P.G.	AVIATION GASLENE	TOTAL FUELS
March	87.4	46.6	44.3	28.7	16.6	2.2	4.5	0.14	230.4
April	88.3	43.6	47.9	28.6	21.8	2.3	5.3	0.09	237.9
May	96.2	44.8	66.7	28.7	21.0	2.1	5.2	0.13	264.8
June	85.5	40.2	42.8	26.1	19.8	1.9	5.1	0.11	221.6
July	95.6	46.9	38.4	30.5	22.0	2.1	21.7	0.46	257.6
August	104.0	49.5	57.1	27.5	20.7	2.3	5.1	0.17	266.5
September	79.4	48.2	42.4	29.4	15.2	2.1	5.3	0.17	222.1
October	76.9	47.8	42.8	27.4	17.8	2.0	6.5	0.19	221.4
November	92.7	45.1	42.3	28.7	19.2	2.2	5.2	0.11	235.5
December	94.5	46.6	58.6	33.8	26.2	3.7	4.5	0.14	268.1
2009									
January**	81.7	27.2	31.0	25.4	16.6	1.7	5.3	22.64	211.4
February**	78.6	20.6	31.0	26.1	18.8	1.9	5.7	20.75	203.5
March**	50.5	21.0	24.1	24.1	12.7	2.0	4.1	22.40	161.0

Source : Ministry of Energy

* Sales from major oil marketing firms only

- data not available

+ Data from other Key firms not included

**Provisional

MT: Means Metric Tonnes

Table 14 (d): Weighted Average Retail Prices for Selected Fuel Products within Nairobi

PERIOD	KSh per litre			
	MOTOR GASOLINE PREMIUM	MOTOR GASOLINE REGULAR	LIGHT DIESEL OIL (GASOIL)	ILLUMINATING KEROSENE
Jan-08	88.57	86.57	78.40	66.77
Feb-08	90.49	88.23	80.31	68.90
Mar-08	93.40	90.52	82.79	68.77
Apr-08	95.96	92.63	85.62	71.27
May-08	96.87	95.15	87.91	71.74
Jun-08	102.34	98.74	95.70	78.87
Jul-08	106.10	101.52	100.21	85.43
Aug-08	108.20	103.32	103.10	88.49
Sep-08	104.56	101.02	101.48	88.07
Oct-08	100.36	98.16	97.73	85.56
Nov-08	94.83	93.27	86.94	82.61
Dec-08	83.53	77.07	72.19	67.47
Jan-09	84.47	78.08	72.63	64.44
Feb-09	76.79	76.59	71.23	62.21
Mar-09	74.04	73.52	70.13	58.12

Source : Kenya National Bureau of Statistics

Fig 11(a): Average Retail Prices of selected Petroleum Products

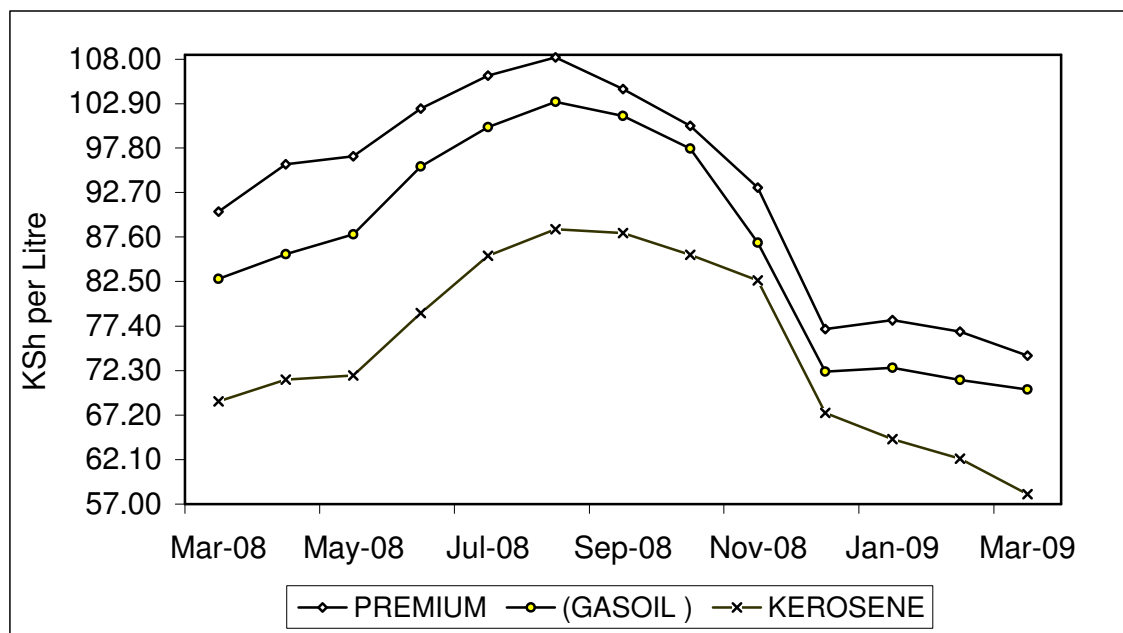


Table 14 (e): Weighted Average Retail Prices for Selected Fuels in Kenya

PERIOD	MOTOR GASOLINE PREMIUM (KSh Per Litre)	MOTOR GASOLINE REGULAR (KSh per Litre)	LIGHT DIESEL OIL, GASOIL (KSh per Litre)	ILLUMINATING KEROSENE (KSh per Litre)	L.P.G (KSh per 13Kg)	Charcoal (KSh per 4 Kg Tin)
Mar-08	91.63	89.99	81.63	66.94	1,783.63	34.99
Apr-08	94.32	92.71	84.49	68.81	1,785.46	34.91
May-08	98.60	94.96	88.51	74.30	1,797.90	35.50
Jun-08	100.43	98.73	93.18	75.45	1,810.07	35.84
Jul-08	103.30	102.45	97.68	80.95	1,802.58	35.73
Aug-08	105.90	104.18	100.90	84.95	1,807.43	35.95
Sep-08	106.85	103.89	100.77	84.52	1,816.06	36.59
Oct-08	102.12	101.09	98.09	82.61	1,827.09	36.95
Nov-08	98.12	96.07	90.62	81.11	1,827.09	37.45
Dec-08	86.16	83.61	77.54	71.10	1,845.46	37.56
Jan-09	84.52	81.73	75.57	68.00	1,681.74	39.72
Feb-09	81.69	80.60	73.94	65.94	1,705.09	40.03
Mar-09	80.64	79.41	72.59	3.26	1,675.75	39.50

Source : Kenya National Bureau of Statistics
 - data not available

Fig 11(b): Weighted Average Prices for LPG in Kenya

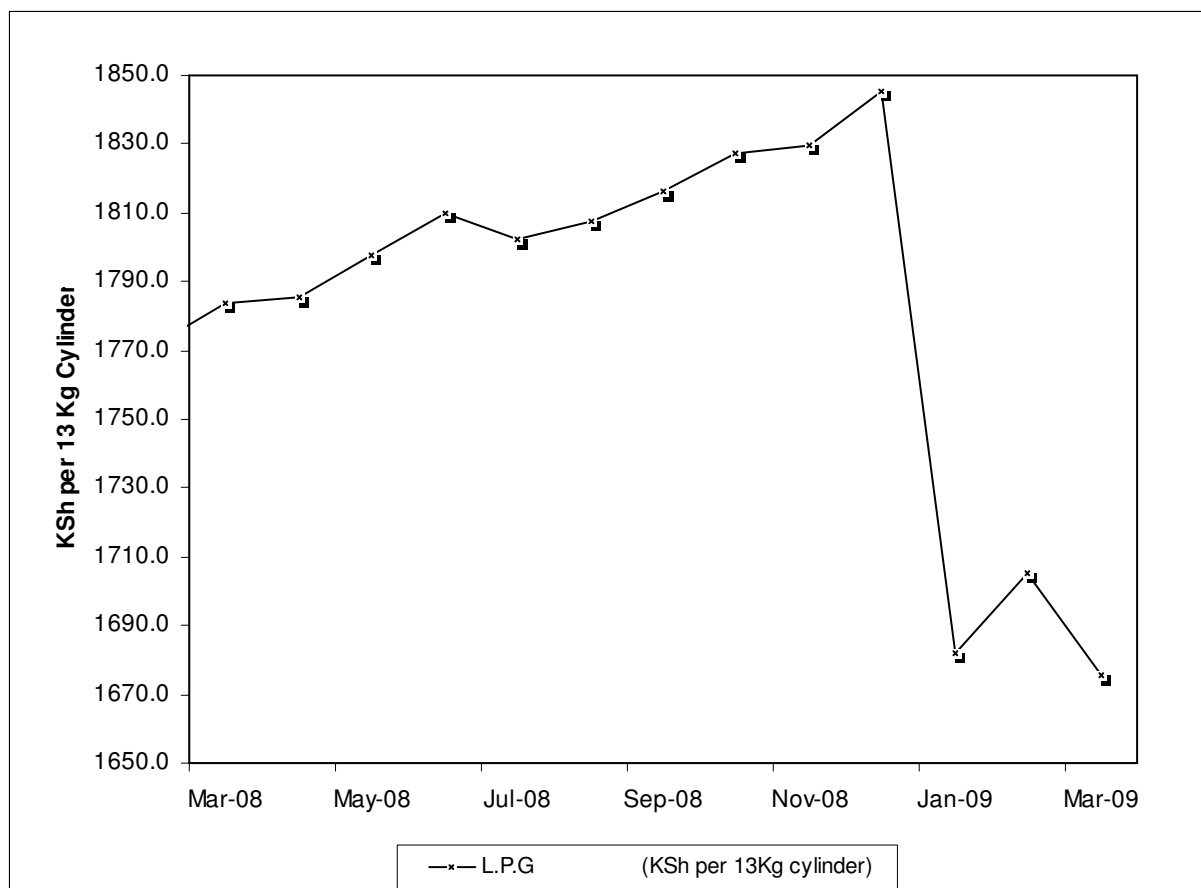


Table 14(f): Murban ADNOC Prices 2003-2008

Month/Year	US\$BBL					
	2004	2005	2006	2007	2008	2009*
January	31.05	42.10	62.15	54.85	92.25	48.85
February	30.90	44.00	60.95	58.75	95.10	44.95
March	33.15	50.95	60.85	62.10	102.20	47.55
April	33.80	52.55	67.50	67.60	109.35	
May	37.05	49.80	68.50	68.40	125.75	
June	35.95	55.45	68.85	69.70	134.00	
July	37.35	57.10	73.00	73.70	137.35	
August	41.55	60.95	72.70	71.75	117.50	
September	41.39	61.05	63.25	78.55	98.05	
October	42.80	58.00	59.35	81.80	69.25	
November	39.65	54.95	59.70	91.75	51.40	
December	38.50	56.90	62.05	90.60	42.10	

Source : Ministry of Energy

* **Provisional**

ADNOC : Abu Dhabi National Oil Corporation

PRICE : Abu Dhabi Free On Board (**FOB**)

US\$/ BBL: US Dollar per Barrel

Fig 12: Trend for Murban ADNOC Crude Oil Prices

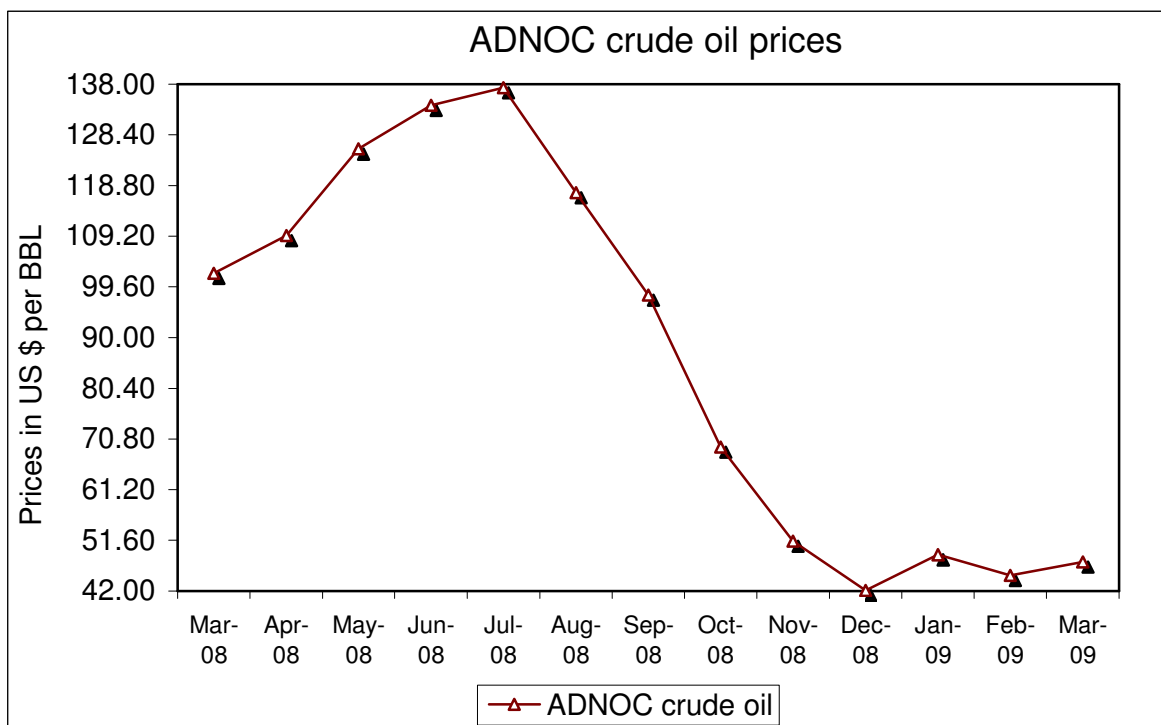


Table 15: Value of Building Plans Approved by Nairobi City Council (NCC)

KSh.'Million

MONTHS	ACTUAL			REAL**		
	RESIDENTIAL	NON RESIDENTIAL	AGGREGATE ACTUAL	RESIDENTIAL	NON RESIDENTIAL	REAL AGGREGATE
2008						
January	2,355.3	1,968.5	4,323.8	43.8	34.9	78.7
February	2,496.4	1,525.4	4,021.8	46.4	27.1	73.5
March	1,496.1	2,916.8	4,412.9	27.8	51.7	79.5
April	3,249.1	2,962.9	6,212.0	60.4	52.6	112.9
May	1,683.6	2,810.7	4,494.3	31.3	49.9	81.1
June	2,008.8	1,874.8	3,883.6	38.0	33.9	71.9
July	2,417.1	1,368.1	3,785.2	45.3	24.6	69.9
August	1,961.3	1,621.5	3,582.8	36.5	29.1	65.5
September	2,144.5	1,589.7	3,734.2	39.9	28.5	68.4
October	2,729.1	1,737.1	4,466.3	50.3	30.9	81.2
November	5,514.5	1,729.2	7,243.7	101.7	31.0	132.7
December	1,976.1	2,954.8	4,930.9	36.5	52.6	89.0

Source: Nairobi City Council

* Provisional

+ : NCC Approval committee did not meet to approve new plans

** Actual deflated by relevant construction cost indices (**Dec1972 =100**)

- data not available

Table 16(a): Domestic Production of Sugar

Month	Metric Tonnes							
	2001	2002	2003	2004	2005	2006	2007	2008*
January	28,291	48,300	37,923	49,186	48,993	47,596	42,188	38,986
February	30,308	39,479	39,709	48,708	41,929	44,823	41,246	49,772
March	36,110	39,479	22,881	46,827	40,192	51,327	45,933	40,753
April	33,148	41,105	17,879	43,123	42,988	41,055	47,255	38,968
May	24,731	18,744	34,954	37,583	40,869	39,849	45,427	50,865
June	35,683	44,581	39,144	28,069	29,076	34,985	36,870	49,300
July	25,695	50,184	31,878	36,824	27,995	30,985	37,496	40,805
August	19,015	45,895	40,106	41,622	41,585	47,002	44,898	21,130
September	37,058	48,752	48,302	45,438	39,003	35,173	44,396	40,567
October	37,355	44,573	48,939	45,530	45,810	35,102	48,849	47,244
November	29,311	35,609	43,037	45,107	42,493	34,265	44,155	46,239
December	40,733	37,923	43,768	48,738	48,069	33,509	41,691	47,686
Total	377,438	494,624	448,520	516,755	489,002	475,671	520,404	512,315

*Provisional

** Revised based on Kenya Sugar Board figures.

Source: Kenya Sugar Authority

TABLE 16(b): PRODUCTION OF SOFT DRINKS

Month	Metric Tonnes							
	2001	2002	2003	2004	2005	2006*	2007*	2008*
January	28,889	38,553	51,676	17,162	22,025	32,548	28,835	25,595
February	17,270	18,547	19,540	12,692	22,895	26,470	27,484	23,744
March	17,721	17,558	17,353	17,650	27,395	27,538	31,120	31,358
April	13,798	14,096	15,970	10,596	18,196	19,542	26,411	23,257
May	11,288	11,698	13,514	12,509	17,308	20,406	26,148	24,834
June	11,840	13,917	15,109	19,776	18,513	22,682	22,852	21,903
July	7,981	6,947	6,266	13,828	19,044	17,568	20,508	20,769
August	10,136	10,486	10,784	12,722	15,367	20,095	21,402	22,418
September	8,180	7,842	6,709	18,768	19,950	20,127	25,899	29,550
October	11,042	9,980	9,102	13,863	21,965	23,774	40,067	26,953
November	12,781	12,354	11,977	11,813	26,881	20,689	27,177	27,564
December	19,612	20,521	22,989	14,542	27,485	27,968	30,329	32,322
Total	170,538	182,499	200,989	175,921	257,024	279,407	328,231	310,267

Source : Kenya National Bureau of Statistics

Table 16(c): Production of Assembled Vehicles

Month	Numbers			
	2005	2006*	2007*	2008*
January	322	360	450	468
February	641	411	516	592
March	579	461	565	388
April	553	436	532	601
May	489	486	574	575
June	448	399	481	487
July	507	439	456	468
August	439	480	589	440
September	423	477	566	488
October	341	447	718	503
November	322	592	658	435
December	335	392	437	302
Total	5,399	5,380	6,542	5,747

*Provisional

TABLE 16(d): PRODUCTION OF GALVANISED SHEETS

Month	Metric Tonnes			
	2005	2006	2007	2008
January	12,203	13,520	13,515	16,240
February	11,491	12,765	15,365	16,912
March	10,679	12,736	16,920	15,498
April	10,439	13,138	15,855	15,396
May	15,952	13,754	14,816	15,741
June	15,085	13,946	16,404	15,528
July	13,596	15,695	15,674	16,935
August	14,806	15,180	15,921	17,166
September	17,536	13,927	15,877	17,255
October	15,837	13,619	16,611	15,755
November	15,544	15,552	15,372	12,418
December	15,950	14,914	15,930	14,477
Total	169,118	168,746	188,260	189,321

Source : Kenya National Bureau of Statistics

- data not available

*Provisional

Table 16(e): Cement production and Consumption

MONTHS	Metric Tonnes					
	2007*		2008*		2009*	
	PRODUCTION	CONSUMPTION	PRODUCTION	CONSUMPTION	PRODUCTION	CONSUMPTION
January	196,464	135,327	178,681	133,429	249,968	235,840
February	178,706	130,918	186,508	152,133	248,721	229,701
March	215,477	164,619	213,740	175,922		
April	198,779	162,976	211,728	173,832		
May	214,333	178,679	254,809	200,639		
June	198,002	163,622	244,128	194,627		
July	236,597	190,706	267,072	203,298		
August	235,786	191,609	266,905	214,606		
September	235,088	191,373	258,139	207,702		
October	206,289	191,244	260,258	183,199		
November	221,484	199,745	234,080	191,603		
December	208,656	160,582	252,751	174,799		
TOTAL	2,545,660	2,061,400	2,828,799	2,205,789		

- data not available

Source: Kenya National Bureau of Statistics

*Provisional

-: data not available

Table 16(f): Milk Intakes in the Formal Milk Sector

	litres			
Month	2006	2007	2008	2009
Jan	28,993,210	35,997,997	28,596,999	35,816,607
Feb	25,445,275	37,508,095	26,527,462	29,345,350
Mar	21,142,657	34,608,329	26,885,445	
Apr	23,285,252	33,286,207	28,616,588	
May	29,773,451	30,038,560	35,017,737	
Jun	34,032,057	33,092,547	34,723,007	
Jul	33,304,057	33,147,783	32,838,238	
Aug	32,658,519	36,022,269	33,643,233	
Sept	32,159,974	35,186,438	35,535,725	
Oct	32,236,110	37,988,733	35,530,367	
Nov	33,925,921	39,840,842	39,359,859	
Dec	33,192,254	36,393,069	41,236,728	
Total	360,148,736	423,110,869	398,511,387	

Source: Kenya Dairy Board

FIG 13: Milk Intake in the Formal Sector

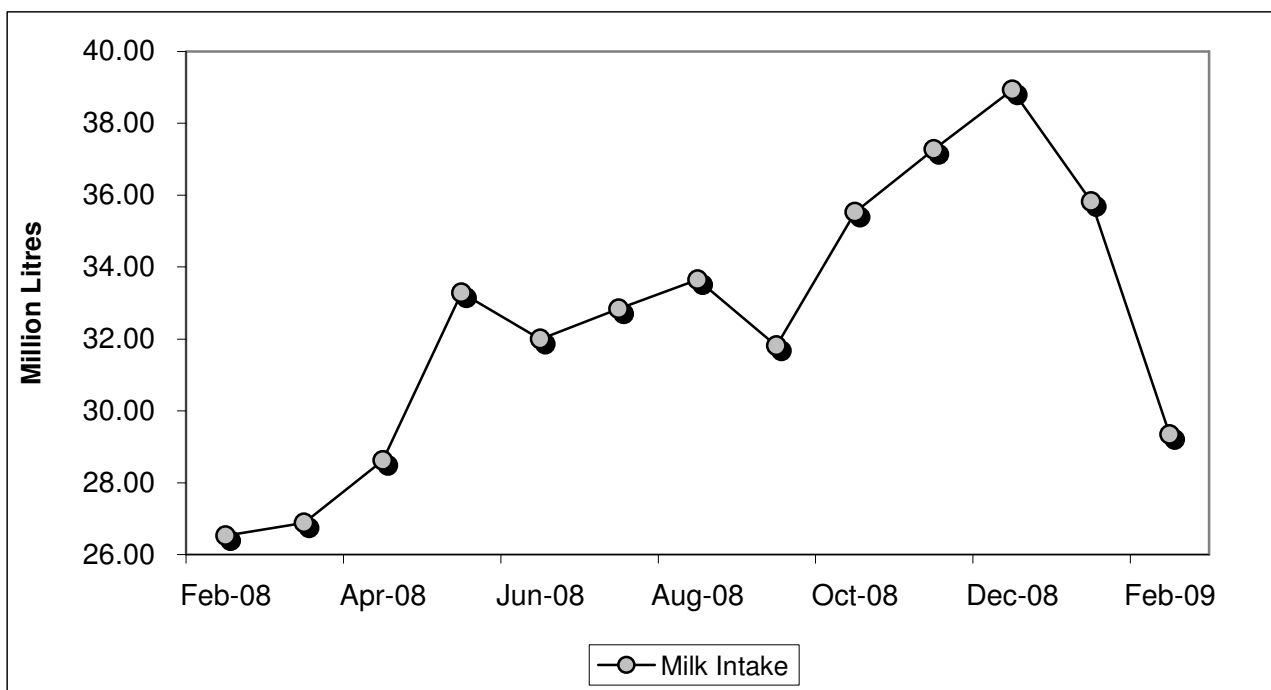


Table 17: Visitor Arrivals* through Jomo Kenyatta International Airport (J.K.I.A) and Moi International Airport (M.I.A)

MONTH	AIRPORT		Numbers
	JKIA	MIA	Visitors to Kenya
Total 2006	684,475	261,773	946,248
Total 2007	1,386,946	508,861	1,895,807
2008			
March	40,770	5,106	45,876
April	40,686	2,063	42,749
May	39,812	2,760	42,572
June	47,224	3,059	50,283
July	64,890	9,311	74,201
August	62,890	13,081	75,971
September	56,026	11,136	67,162
October	58,504	11,260	69,764
November	50,224	15,369	65,593
December	72,657	22,398	95,055
Total 2008	610,378	111,188	721,566

* Visitors arrivals exclude Kenyans

**Provisional

FIG 14: VISITORS ARRIVING IN KENYA THROUGH THE MAIN AIRPORTS

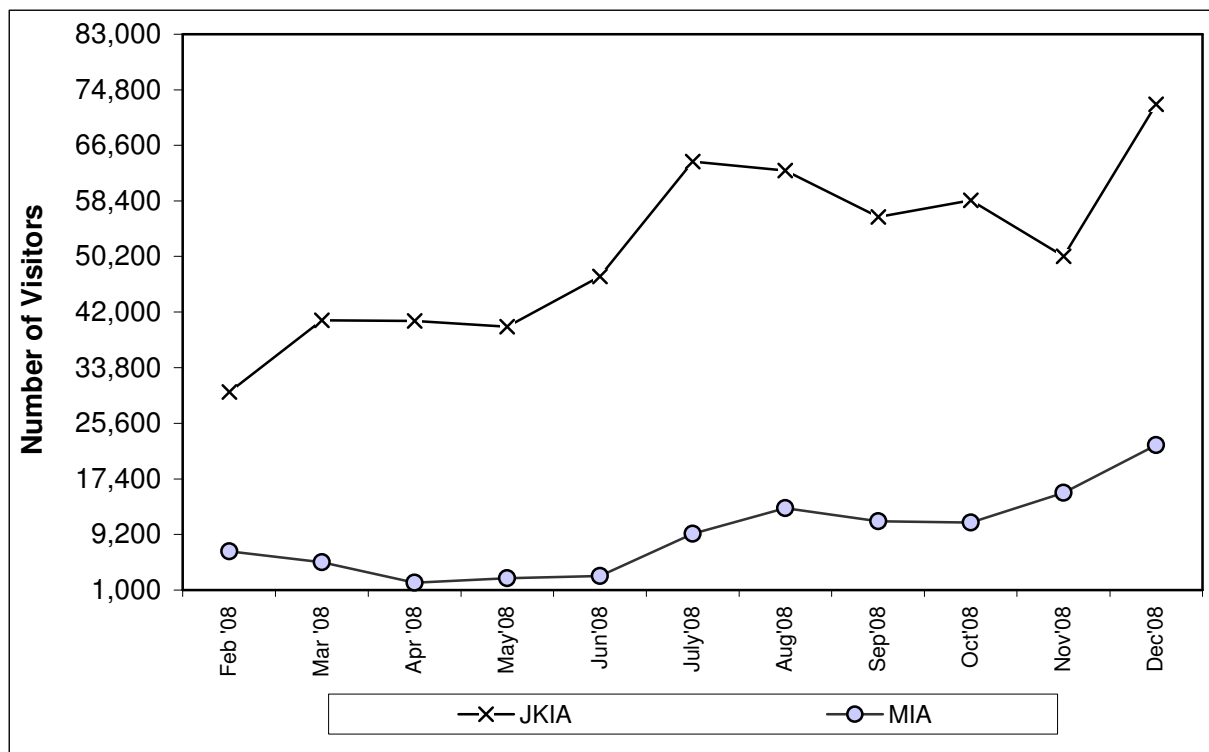


TABLE (18A): JOMO KENYATTA INT. AIRPORT INTERNATIONAL FLIGHTS ONLY- EMBARKED PASSENGERS BY PORT OF DESTINATION.

PORTS.	2007	2008											2009		
	TOTAL	Feb	Mar	Apr	May	June	July	Aug	Sep	Oct	Nov	Dec	TOTAL	Jan	Feb
ADDIS ABABA (ADD)	45,260	3,975	635	740	620	4,320	1,081	3,929	728	3,297	3,739	2,277	26,060	3759	3975
CAIRO (CAI)	26,195	1,367	1,860	2045	1,903	2,505	3,719	2,941	2,897	2,812	2,628	3,304	28,883	902	1367
DAR ES SALAAM (DAR)	82,939	5,667	6,300	7018	6,709	2,684	7,073	7,353	7,244	5,555	6,655	3,704	71,240	5278	5667
ENTEBBE (EBB)	119,541	8,767	10,505	9631	9,647	11,051	10,839	11,005	10,456	10,401	10,802	9,873	122,120	9143	8967
HARARE (HRE)	16,880	1,148	1,556	1357	1,334	1,186	918	1,352	1,234	1,218	1,475	1,996	15,997	1223	1148
JOHANNESBURG (JNB)	116,178	6,645	6,168	5860	8,118	8,741	6,237	10,646	6,743	10,823	14,430	12,135	105,218	8672	6645
TOTAL AFRICA	406,993	27,569	27,024	26,651	28,331	30,487	29,867	37,226	29,302	34,106	39,729	33,289	369,518	28,977	27,769
BOMBAY (BOM)	73,691	4,821	662	5271	4,282	6,253	6,442	6,161	4,486	9,680	1,296	7,284	57,657	1019	4821
DUBAI (DXB)	122,115	5,729	15,580	15383	15,540	14,870	21,141	23,848	17,050	7,376	16,917	16,022	183,322	13866	5729
JEDAH (JED)	8,130	256	264	492	507	463	0	2,432	1,429	0	472	0	6,315	0	256
KARACHI (KHI)	0	0	0	0	0	0	0	0	0	0	0	0	0	0	0
MUSCAT (MCT)	0	0	0	0	0	0	0	0	0	0	0	0	0	0	0
OTHERS															
TOTAL ASIA	203,936	10,806	16,506	21,146	20,329	21,586	27,583	32,441	22,965	17,056	18,685	23,306	247,294	14,885	10,806
AMSTERDAM (AMS)	176,803	2,357	2,703	3433	7,771	13,085	6,414	19,163	17,641	16,243	15,802	3,883	112,445	3950	2357
BRUSSELS (BRU)	29,563	1,003	0	0	3,353	3,282	2,403	3,831	1,830	1,825	2,092	2,437	23,401	1345	1003
LONDON (LON)	195,780	7,252	10,247	6786	11,093	17,709	12,957	23,915	20,474	18,237	15,037	16,001	173,710	14002	7252
PARIS-(CDG) & (PAR)	19,034	565	-	0	0	0	3,885	4,047	2,657	1,877	1,967	2,009	18,255	1248	565
ROME (ROM) ^z	-	-	-	0	0	0	0	0	0	0	0	0	-	0	0
ZURICH (ZRH)	27,288	3,558	0	0	3,669	4,064	2,552	2,152	0	2,408	2,054	2,137	26,289	3695	3558
TOTAL EUROPE	448,468	14,735	12,950	10,219	25,886	38,140	28,211	53,108	42,602	40,590	36,952	26,467	354,100	24,240	14,735
TOTAL OTHERS**	428,639	35,556	69,894	33061	37,644	37,102	45,355	52,666	44,102	40,382	42,050	32,073	497,902	28960	32450
GRAND TOTAL	1,488,177	88,666	126,374	91,077	112,190	127,315	131,016	175,441	138,971	132,134	137,416	115,135	1,468,814	97,062	85,760

Source : Kenya National Bureau of Statistics

- no passengers embarked

* Provisional

** Ports not listed

^z All planes flying to Italy

FIG 15: J.K.I.A. PASSENGERS BY REGION OF DESTINATION

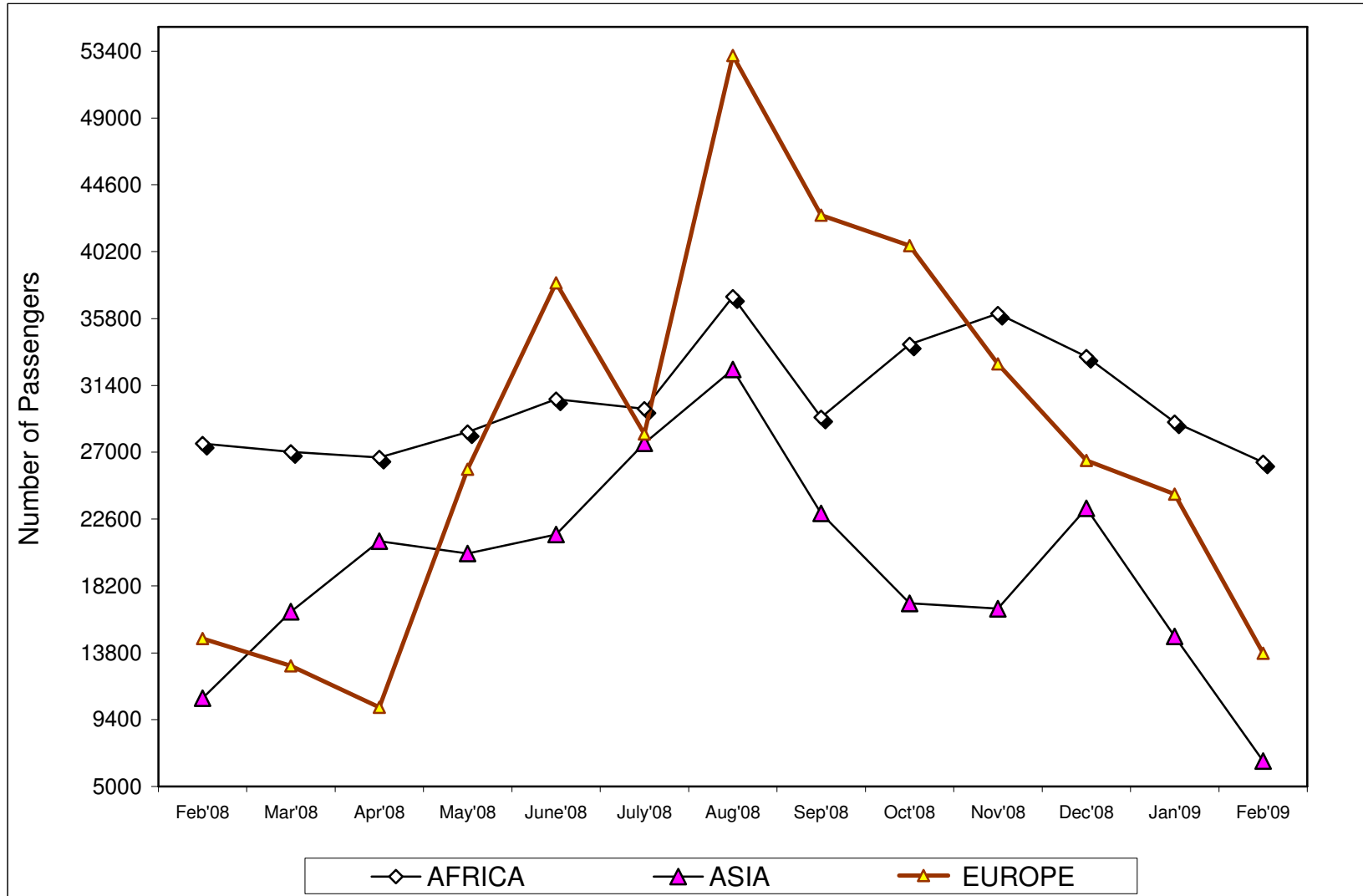


TABLE (18B): JOMO KENYATTA INT. AIRPORT INTERNATIONAL FLIGHTS ONLY- LANDED PASSENGERS BY PORT OF DESTINATION.

PORTS	2007	2008											2009	2009	
	TOTAL	Feb	Mar	Apr	May	June	July	Aug	Sep	Oct	Nov	Dec	TOTAL	Jan	Feb
ADDIS ABABA (ADD)	42,261	3,232	891	950	1,114	3,041	649	3,761	1,238	4,493	4,212	1,204	25,643	858	3,975
CAIRO (CAI)	23,824	1,202	1,592	1,874	1,840	2,369	3,888	6,478	2,390	3,853	2,276	4,426	33,372	1,184	1,367
DAR ES SALAAM (DAR)	85,689	6,770	6,334	6,547	6,277	4,881	7,963	7,909	4,633	6,176	7,129	6,714	76,886	5,553	5,667
ENTEBBE (EBB)	118,612	8,591	10,461	9,304	9,430	10,774	11,035	10,881	10,372	10,747	10,555	10,082	120,988	8,756	8,967
HARARE (HRE)	15,555	1,016	1,052	1,043	893	1,060	1,172	1,195	1,170	1,109	1,120	1,325	13,310	1,155	1,148
JOHANNESBURG (JNB)	107,676	5,527	5,729	6,306	8,002	9,171	7,154	10,042	6,814	10,408	10,840	16,038	103,179	7,148	6,645
TOTAL AFRICA	393,617	26,338	26,059	26,024	27,556	31,296	31,861	40,266	26,617	36,786	36,132	39,789	373,378	24,654	27,769
BOMBAY (BOM)	70,627	1,121	1,097	6,113	7,162	6,700	6,453	6,150	5,183	4,852	755	7,355	54,557	1,616	4,821
DUBAI (DXB)	118,377	5,395	14,699	14,226	15,024	15,587	19,616	20,475	18,581	6,064	15,746	19,349	178,977	14,215	5,729
JEDAH (JED)	6,906	165	262	323	452	706	0	1,546	250	0	195	0	3,899	0	256
KARACHI (KHI)	0	0	0	0	0	0	0	0	0	0	0	0	0	0	0
MUSCAT (MCT)	-	0	0	0	0	0	0	0	0	0	0	0	-	0	0
TOTAL ASIA	195,910	6,681	16,058	20,662	22,638	22,993	26,069	28,171	24,014	10,916	16,696	26,704	237,433	15,831	10,806
AMSTERDAM (AMS)	183,515	5,294	5,994	4,337	7,929	7,297	5,595	16,997	13,121	17,022	14,772	7,284	110,997	5,355	2,357
BRUSSELS (BRU)	19,720	600	0	0	2,350	5,751	1,828	1,412	0	1,985	1,158	309	16,160	767	1,003
LONDON (LON)	189,493	6,201	9,284	5,787	11,985	20,902	10,953	13,890	18,100	20,682	13,118	14,865	154,715	8,949	7,252
PARIS-(CDG)&(PAR)	17,293	584	0	0	0	0	2,892	2,789	1,672	2,268	1,775	2,905	15,524	639	565
ROME (ROM) Z	-	0	0	0	0	0	0	0	1,813	0	0	0	-	0	0
ZURICH (ZRH)	25,579	1,099	0	0	1,679	2,097	5,104	2,246	0	0	1,996	4,065	19,807	1,521	3,558
TOTAL(EUROPE)	435,600	13,778	15,278	10,124	23,943	36,047	26,372	37,334	34,706	41,957	32,819	29,428	317,203	17,231	14,735
OTHERS(TOTAL) **	445,935	30,007	72,017	54,919	56,779	42,088	48,881	50,659	41,906	45,431	39,842	38,499	547,024	26,562	32,450
GRAND TOTAL	1,471,062	76,804	129,412	111,729	130,916	132,424	133,183	156,430	127,243	135,090	125,489	134,420	1,475,038	84,278	85,760

Source : Kenya National Bureau of Statistics

- no passengers landed

* Provisional

** Ports not listed

z Includes all planes from Italy

FIG 16: J.K.I.A. PASSENGERS BY REGION OF ORIGIN

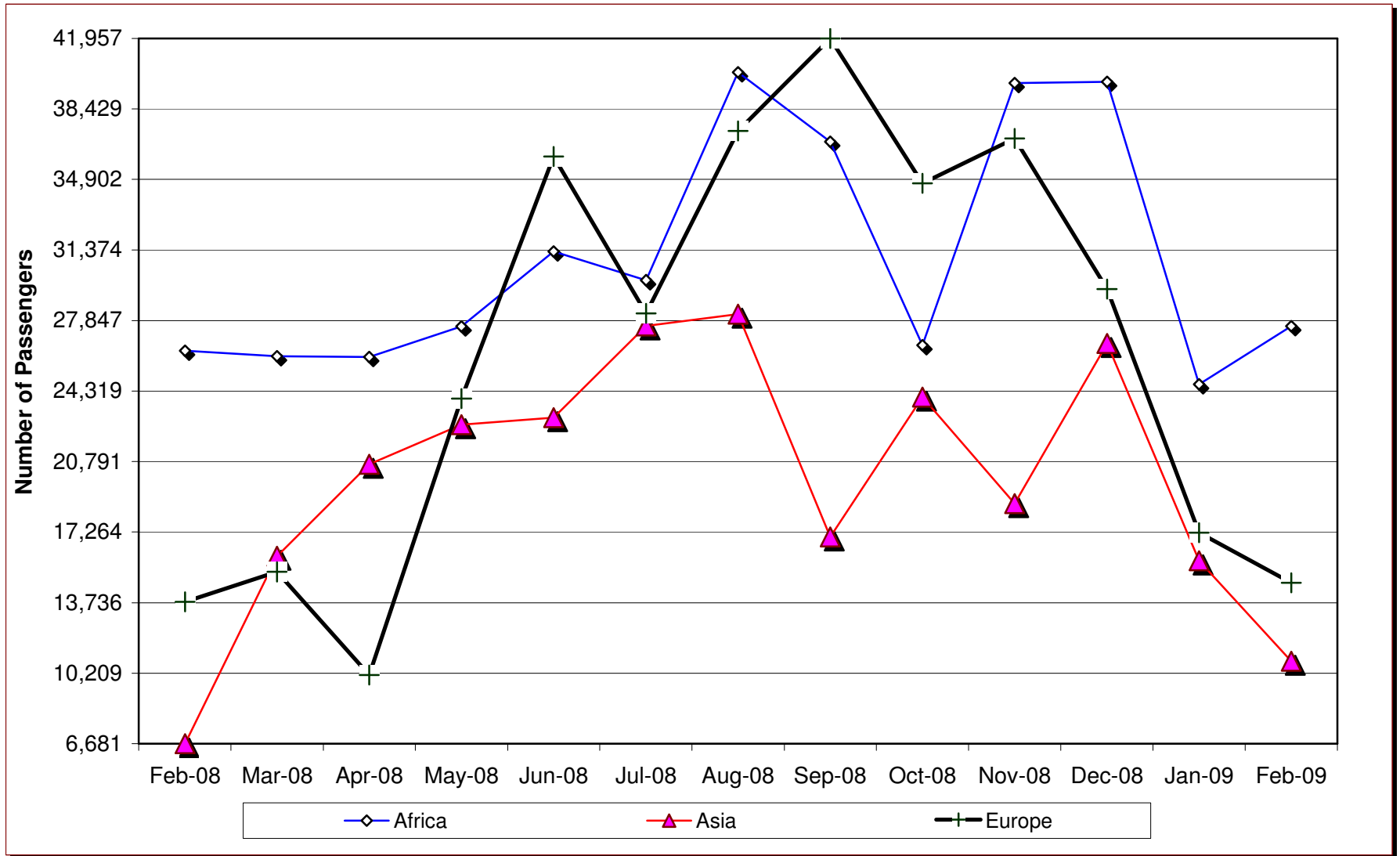


Table 18 C: New Vehicle Registration

<i>Body Type/Month</i>	2007		2008												
	<i>Dec</i>	<i>Cumulative 2007</i>	<i>Jan</i>	<i>Feb</i>	<i>Mar</i>	<i>Apr</i>	<i>May</i>	<i>June</i>	<i>July</i>	<i>Aug</i>	<i>Sep</i>	<i>Oct</i>	<i>Nov</i>	<i>Dec</i>	<i>Cumulative 2008</i>
Saloons	1,096	17,893	1,876	1,065	830	1,272	1,311	1,230	1,823	2,686	1,630	1,603	1,527	1,833	18,686
St,Wagon	1,406	24,115	2,702	1,553	1,299	1,839	2,148	1,890	2,799	2,689	2,580	2,232	2,358	2,607	26,696
Vans,P/Ups,etc	696	9,470	601	706	566	877	413	405	555	408	479	680	587	757	7,034
M/Buses	503	4,252	427	452	435	559	390	314	509	564	426	373	370	387	5,206
Buses	170	2,006	83	61	82	97	128	73	126	129	104	108	104	148	1,243
Lorries	471	6,329	409	462	541	658	547	593	585	680	682	542	330	662	6,691
Trailers	144	2,193	177	134	184	182	168	170	193	170	88	166	247	221	2,100
Motors Cycles	826	16,293	1,740	1,982	1,904	3,840	4,390	3,859	4,530	4,605	5,964	6,680	6,471	5,447	51,412
3 Whellers	15	1,072	63	48	75	30	56	57	79	67	45	80	60	44	704
Wheeled tractors	55	1,213	87	121	85	133	101	88	90	67	143	136	87	124	1,262
Others	13	488	27	45	43	52	47	59	58	43	69	65	253	36	797
TOTAL	5,395	85,324	8,192	6,629	6,044	9,539	9,699	8,738	11,347	12,108	12,210	12,665	12,394	12,266	121,831

Source : Kenya National Bureau of Statistics

* Provisional

- Not specified