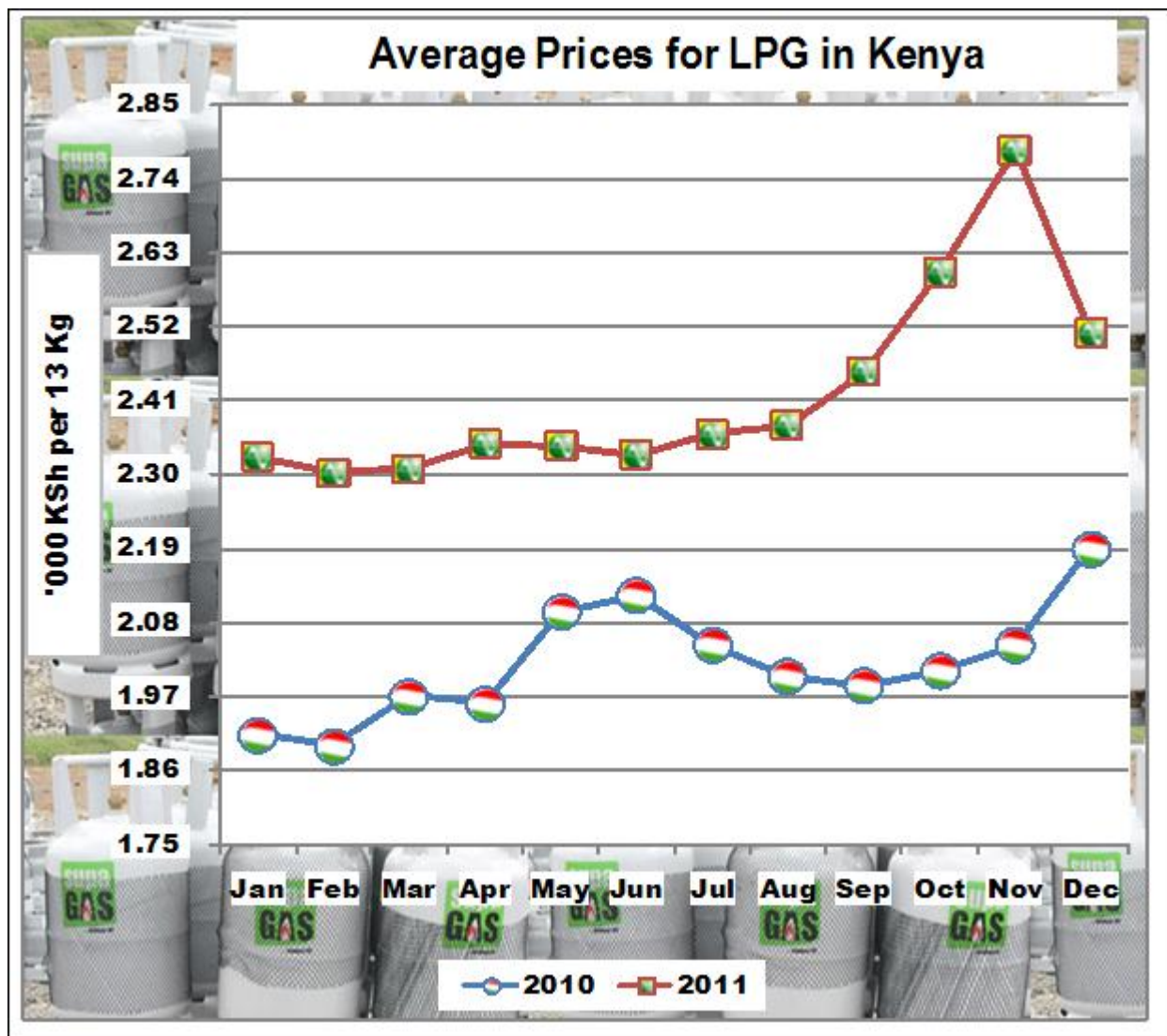


# LEADING ECONOMIC INDICATORS



**KENYA NATIONAL BUREAU OF STATISTICS**

P.O. Box 30266- 00100 Nairobi

Website: [www.knbs.or.ke](http://www.knbs.or.ke)

Tel: 317586/88, 317612/22 Fax: 315977

email: [directorgeneral@knbs.or.ke](mailto:directorgeneral@knbs.or.ke)

## DECEMBER 2011

## TABLE OF CONTENTS

Pg No.

LIST OF TABLES.....	II
LIST OF FIGURES.....	III
<b>KEY HIGHLIGHTS ON LEADING ECONOMIC INDICATORS .....</b>	<b>1</b>
<b>OVERVIEW.....</b>	<b>1</b>
<b>MACROECONOMIC INDICATORS AND FINANCIAL INTERMEDIATION.....</b>	<b>1</b>
<b>SECTORAL PERFORMANCES .....</b>	<b>1</b>
A). AGRICULTURE.....	2
B). INTERNATIONAL TRADE.....	2
C). ENERGY .....	2
D). MANUFACTURING, BUILDING AND CONSTRUCTION.....	3
E). TOURISM AND TRANSPORT .....	3

## LIST OF TABLES

Table 1:	Kenya consumer price indices and inflation rate .....	3
Table 2:	Mean* foreign exchange rates of kenya shillings against selected major currencies at the end of the month .....	6
Table 3:	Interest rates (%) .....	7
Table 4:	Capital markets – nairobi stock exchange .....	9
Table 5 (a):	Money supply.....	10
Table 5b:	Foreign exchange reserves .....	11
Table 6:	Coffee sales and prices* .....	12
Table 7:	Tea production and auction prices .....	13
Table 8:	Cane deliveries .....	14
Table 9(a):	Average monthly retail prices for dry maize in the year 2010 .....	15
Table 9(b):	Average monthly retail prices for dry maize in the year 2011 .....	16
Table 9(c):	Average monthly retail prices for dry beans (2010).....	18
Table 9(d):	Average monthly retail prices for dry beans (2011) .....	19
Table 10:	Export of coffee, tea and horticultural produce.....	21
Table 11:	Monthly exports of fresh horticultural products.....	22
Table 12:	Kenya's external trade, july 2010 – july 2011.....	23
Table 13(a):	Major destinations of domestic exports, july 2010 – july 2011 .....	24
Table 13 (b):	Domestic exports by broad economic category .....	25
Table 14(a):	Major origins of imports, july 2010 – july 2011 .....	26
Table 14 (b):	Imports by broad economic category .....	27
Table 15(a):	Local electricity generation by source.....	28
Table 15(b):	Generation and consumption of electricity .....	29
Table 15 (c):	Consumption of petroleum fuels .....	30
Table 15 (d):	Average retail prices for selected fuel products within nairobi .....	31
Table 15 (e):	Average retail prices for selected fuels in kenya .....	32
Table 15(f):	Murban adnoc prices 2006-2011 .....	33
Table 16:	Value of building plans approved by nairobi city council (ncc) .....	34
Table 17(a):	Domestic production of sugar + .....	35
Table 17(b):	Production of soft drinks .....	35
Table 17(c):	Production of assembled vehicles.....	36
Table 17(d):	Production of galvanised sheets .....	36
Table 17(e):	Cement production and consumption .....	37
Table 17(f):	Milk intakes in the formal milk sector .....	37
Table 18:	Visitor arrivals* through jomo kenyatta international airport (j.k.i.a) and moi international airport (m.i.a) .....	39
Table (19a):	Jomo kenyatta int. Airport international flights only- embarked passengers by port of destination .....	40
Table (19b):	Jomo kenyatta int. Airport international flights only- landed passengers by port of origin.	42
Table 19 c:	New vehicle registration .....	44

## LIST OF FIGURES

FIG. 1:	INFLATION RATES .....	5
FIG 2:	END OF MONTH MEAN EXCHANGE RATE OF KENYA SHILLINGS AGAINST MAJOR SELECTED CURRENCIES ..	6
FIG 3:	INTEREST RATES .....	8
FIG 4:	NAIROBI STOCK EXCHANGE SHARES INDEX .....	9
FIG 5:	MONEY SUPPLY (M3) .....	10
FIG 6:	FOREIGN EXCHANGE RESERVES .....	11
FIG.7:	COFFEE SALES AT THE NAIROBI COFFEE EXCHANGE .....	12
FIG.8:	TEA PRODUCTION .....	13
FIG.9:	CANE DELIVERIES .....	14
FIG 10:	ELECTRICITY GENERATION BY SOURCE .....	28
FIG 11:	ELECTRICITY GENERATION, CONSUMPTION AND POWER LOSSES .....	29
FIG 12(A):	AVERAGE RETAIL PRICES OF SELECTED PETROLEUM PRODUCTS .....	31
FIG 12(B):	AVERAGE PRICES FOR LPG IN KENYA .....	32
FIG 13:	TRENDS FOR MURBAN ADNOC CRUDE OIL PRICES .....	33
FIG 14:	MILK INTAKE IN THE FORMAL SECTOR .....	38
FIG 15:	VISITORS ARRIVING IN KENYA THROUGH THE MAIN AIRPORTS .....	39
FIG 16:	J.K.I.A. PASSENGERS BY REGION OF DESTINATION .....	41
FIG 17:	J.K.I.A. PASSENGERS BY REGION OF ORIGIN .....	43

## **KEY HIGHLIGHTS ON LEADING ECONOMIC INDICATORS**

### **OVERVIEW**

The monthly Leading Economic Indicators Publication December 2011 highlights trends in Consumer Price Indices (CPI) and inflation, interest rates, exchange rates, international trade, agriculture, energy, manufacturing, building and construction, tourism and transport.

### **MACROECONOMIC INDICATORS AND FINANCIAL INTERMEDIATION**

Consumer Price Index (CPI) increased by 0.7 per cent from 129.13 points in November 2011 to 130.09 points in December 2011. Equally, the Kenya rate of inflation decreased from 19.72 per cent to 18.93 per cent in the same period.

The Kenyan Shilling appreciated against all worlds' major currencies; the US dollar, Sterling pound, the Euro, the Japanese Yen, the South African rand; the Ugandan and Tanzanian shilling at the end of December 2011 to exchange at an average of KSh 85.068, 131.119, 110.060, 109.694, 10.387, 29.506 and 18.809 respectively, as at the end of December 2011, respectively.

The average yield rate for the 91-day Treasury bills, which is a benchmark for the general trend of interest rates, increased from 16.14 per cent in November 2011 to 17.90 per cent in December 2011. Similarly, the weighted average lending rate by Commercial banks for loans and advances rose to 18.48 per cent in November 2011. The Savings rate by commercial banks was 1.41 per cent during the same period.

The Nairobi Stock Exchange share index (NSE 20) increased by 1.59 per cent from 3,155.00 points in November 2011 to 3,205.00 points in December 2011. Equally, the total value of shares traded went up from KSh 3.9 billion in November 2011 to KSh 4.0 billion in December 2011. Total number of shares traded increased from 398.9 million shares traded in November 2011 to 337.0 million shares traded in December 2011.

Broad money supply (M3), a key indicator for monetary policy formulation, contracted from KSh 1,515.0 billion in October 2011 to KSh 1,238.9 billion in November 2011. However, Money and quasi-money (M2) expanded from KSh 1,184.0 billion to KSh 1,238.9 billion over the same period.

Gross Foreign Exchange Reserves decreased from KSh 588.8 billion in October 2011 to stand at KSh 492.3 billion in November 2011. Similarly, Net Foreign Exchange Reserves decreased over the same period to stand at KSh 290.9 billion.

## **SECTORAL PERFORMANCES**

### **A). AGRICULTURE**

Quantity of coffee auctioned at the Nairobi Coffee Exchange declined from 1,331 MT in November 2011 to 1,800 MT in December 2011. Similarly, its average auction price decreased from KSh 540.97 per kilogram to KSh 602.64 per kilogram in the same period. In contrast, the quantity of processed tea decreased by 7.8 per cent from 39,926 MT in October 2011 to 36,825 MT in November 2011 while its average auction price fell by 7.5 per cent from KSh 290.94 per kilogram to KSh 269.22 per kilogram over the same period.

Average price for dry maize fell from KSh 42.42 per kilogram in November 2011 to KSh 41.27 per kilogram in December 2011 while the average price for dry beans stood at KSh 75.34 per Kilogram in December 2011

### **B). INTERNATIONAL TRADE**

Quantity of coffee exported decreased by 39.7 per cent from 3,298.0 MT in October 2011 to 1,989.9 MT in November 2011. Similarly its value fell by 45.0 per cent from KSh 2,133.5 million to KSh 1,173.0 million over the same period. In contrast, the quantity of tea exported increased by 13.4 per cent from 29,421.7 MT in October 2011 to 33,352.5 MT in November 2011 while its value stood at KSh 9,333.6 million in November 2011.

Volume of trade increased by 6.1 per cent from KSh 161.0 billion in October 2011 to KSh 170.8 billion in November 2011. Total value of exports decreased by 1.6 per cent while the value of imports rose by 9.1 per cent over the same period.

Domestic exports by Broad Economic Category (BEC) indicate that food and beverages category was the main export category in November 2011 with a share of 41.52 per cent, while the value of Non-food industrial supplies; and Consumer goods not elsewhere specified registered a share of 27.86 and 26.24 per cent respectively. All the other economic categories recorded less than 5 per cent shares in total export.

Imports by Broad Economic Category (BEC) indicate that imports shares of Industrial Supplies (Non-Food), fuel and lubricants, consumer goods not elsewhere specified; and Machinery and other capital equipment; increased in November 2011 compared to October the same year. However, food and beverages and transport equipment registered declines during the same period. Industrial supplies (non-food); fuel and lubricants and Machinery and other capital equipment recorded import shares of 28.20, 26.97 and 16.95 per cent respectively. Transport equipment and Consumer goods not elsewhere specified registered 7.80 and 9.26 per cent shares, respectively. Food and Beverages and Goods not elsewhere specified had shares of 6.41 and 4.42 per cent of the import bill, respectively.

### **C). ENERGY**

Total electricity generation declined from 681.3 million KWh in November 2011 to 652.9 million KWh in December 2011. Similarly, domestic consumption of electricity declined by 4.4 per cent from 544.3 million KWh in November 2011 to 520.3 million KWh in December 2011.

The total consumption of petroleum products declined by 3.4 per cent from 296.2 thousand MT in November 2011 to 286.1 thousand MT in December 2011.

Domestic oil prices of motor gasoline premium declined to retail average of KSh 113.39 per litre in December 2011 from KSh 124.85 per litre retailed in November 2011. Similarly, the price of kerosene and for light diesel went down to retail at KSh 88.34 and 95.71 per litre respectively, during the same period. In Nairobi, average retail prices for motor gasoline decreased from the retail price of KSh 124.13 per litre in November 2011 to retail at KSh 112.64 per litre in December 2011. Similarly, the price of kerosene fell to retail at KSh 87.43 per litre during the same period. Light diesel retailed at KSh 104.69 during the same period.

In the international market, the price of Murban crude oil declined by 2.2 per cent per barrel from US Dollars 114.35 per barrel in November 2011 to US Dollars 111.80 per barrel in December 2011.

#### **D). MANUFACTURING, BUILDING AND CONSTRUCTION**

Domestic production of sugar increased by 12.8 per cent from 28,990 MT in October 2011 to 32,689 MT in November 2011, while production of soft drinks went up by 0.5 per cent from 30,452 MT to 30,593 in MT in the same period.

Production of new assembled vehicles decreased from 725 vehicles in September 2011 to 682 vehicles in October 2011. However, the production of galvanized sheets fell by 3.3 per cent from 23,874MT in August 2011 to 23,076 MT in September 2011.

Quantity of cement produced declined by 0.6 per cent from 327,343 MT in November 2011 to 325,408 MT in December 2011, while, the consumption of cement fell by 3.3 per cent from 300,298 in October 2011 to 290,413 MT in November 2011.

Milk deliveries in the formal sector decreased by 3.1 per cent from 45.90 million litres in November to 44.50 million litres in December 2011.

#### **E). TOURISM AND TRANSPORT**

Number of visitors who arrived through Jomo Kenyatta International Airport (JKIA) and Moi International Airports rose from 109,035 visitors recorded in November of 2011 to 115,979 in December 2011. The number of passengers who embarked at Jomo Kenyatta International Airport (JKIA) decreased by 5.9 per cent from 197,244 persons in September 2011 to 185,541 persons in October 2011, while passengers who landed decreased by 6.4 percent from 199,661 persons in September 2011 to 186,949 persons in October 2011.

The total number of vehicles registered recorded a decline of 8.5 per cent from 18,787 vehicles in August 2011 to 17,202 vehicles in September 2011. Motor cycles remained the main vehicles registered during the month of August.

TABLE 1: KENYA CONSUMER PRICE INDICES AND INFLATION RATE

NEW KENYA CPI: BASE PERIOD FEBRUARY 2009=100

Group	NAIROBI	NAIROBI	NAIROBI	NAIROBI	PROVINCES	KENYA
	LOWER	MIDDLE	UPPER	COMBINED	EXCEPT	CPI
	INCOME	INCOME	INCOME		NAIROBI	
Dec-10	110.33	103.83	109.09	109.04	109.62	109.38
Jan-11	111.59	106.64	110.90	110.37	110.71	110.57
Feb-11	114.08	107.26	111.29	112.33	111.86	112.05
Mar-11	117.46	108.86	111.95	115.18	114.22	114.62
Apr-11	121.32	111.34	113.12	118.54	118.04	118.29
May-11	121.77	112.42	113.93	119.22	119.67	119.48
Jun-11	123.70	112.95	118.28	120.90	120.91	120.91
Jul-11	124.83	113.83	120.18	122.00	122.75	122.44
Aug-11	126.67	115.05	120.90	123.65	124.15	123.95
Sep-11	128.27	116.57	121.83	125.21	125.24	125.23
Oct-11	129.60	118.86	123.51	126.78	127.50	127.20
Nov-11	131.23	120.95	124.52	128.49	129.57	129.13
Dec-11	133.09	121.73	124.03	130.01	130.15	130.09

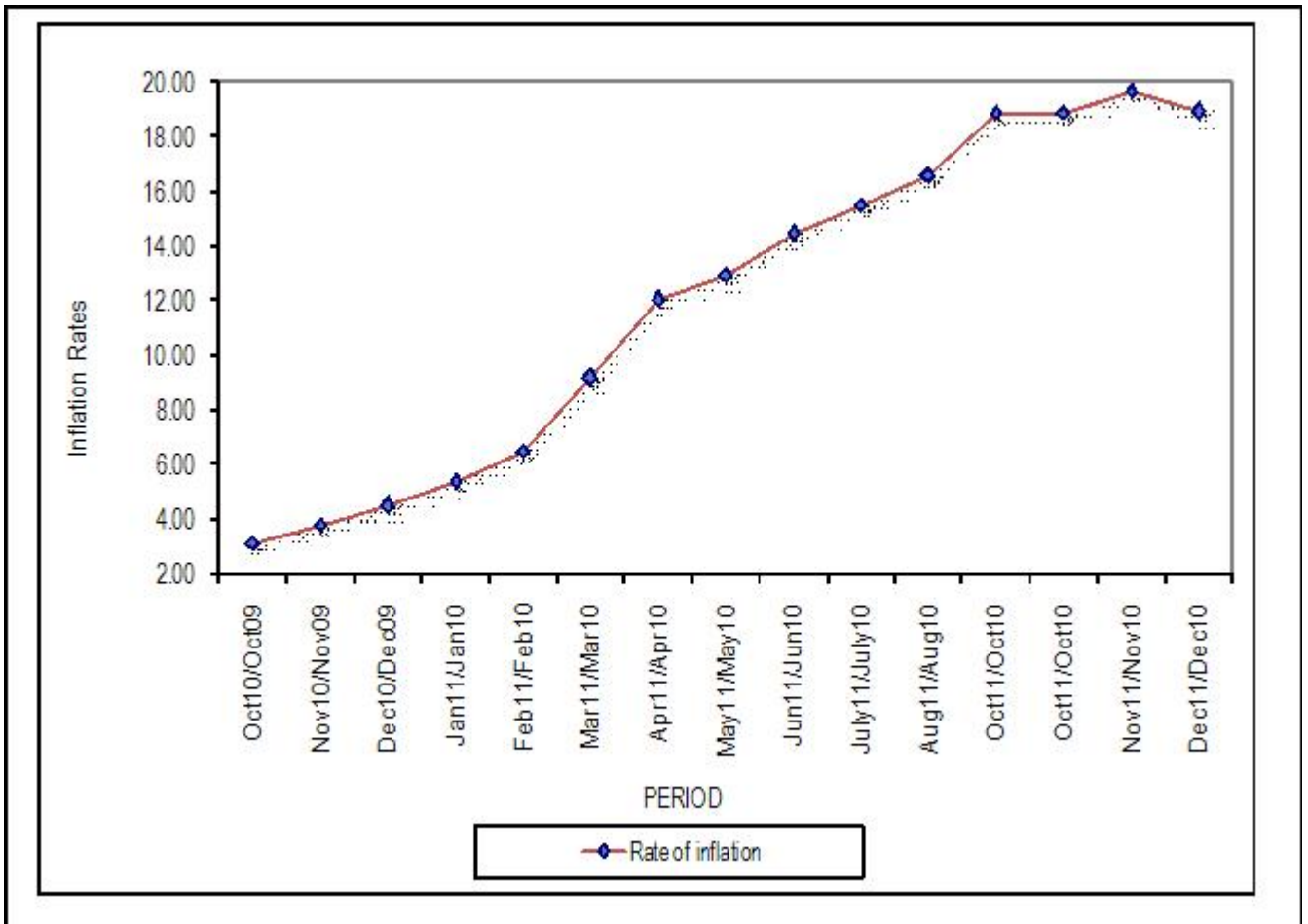
Inflation Rates						
PERIOD	NAIROBI	NAIROBI	NAIROBI	NAIROBI	PROVINCES	KENYA
	LOWER	MIDDLE	UPPER	COMBINED	EXCEPT	CPI
	INCOME	INCOME	INCOME		NAIROBI	
Dec10/Dec09	4.70	2.40	4.63	4.16	4.76	4.51
Jan'11/Jan'10	5.67	3.60	5.11	5.27	5.60	5.42
Feb'11/Feb'10	7.46	4.19	5.43	6.93	6.49	6.53
Mar'11/Mar'10	11.04	5.35	5.38	9.91	8.99	9.19
Apr'11/Apr'10	14.04	7.55	6.39	12.39	11.92	12.05
May'11/May'10	13.97	8.74	6.18	12.88	13.31	12.95
Jun'11/Jun'10	15.96	9.57	10.14	14.65	14.66	14.49
July'11/July'10	16.00	10.15	11.67	15.58	16.29	15.53
Aug'11/Aug'10	17.17	11.28	12.92	16.89	17.37	16.65
Sep'11/Sep'10	17.97	12.42	13.15	17.88	17.91	17.32
Oct'11/Oct'10	19.58	14.33	14.48	18.77	19.45	18.91
Nov'11/Nov'10	20.62	15.57	13.99	19.09	20.09	19.72
Dec'11/Dec'11	20.63	15.75	13.69	18.60	18.73	18.93

Source: Kenya National Bureau of Statistics

NB:

1. NAIROBI LOWER INCOME GROUP - Households spending less than Kshs 23,670 in October 2005
  2. NAIROBI MIDDLE INCOME GROUP- Households spending between Kshs 23,671 to Kshs 119,999 in October 2005
  3. NAIROBI UPPER INCOME GROUP - Households spending above Kshs 121,000 in October 2005
- Towns in other provinces include Mombasa, Malindi, Machakos, Nyeri, Thika, Nakuru, Kisii, Kisumu, Eldoret, Nyahururu, Garissa and Bungoma.

FIG. 1: INFLATION RATES

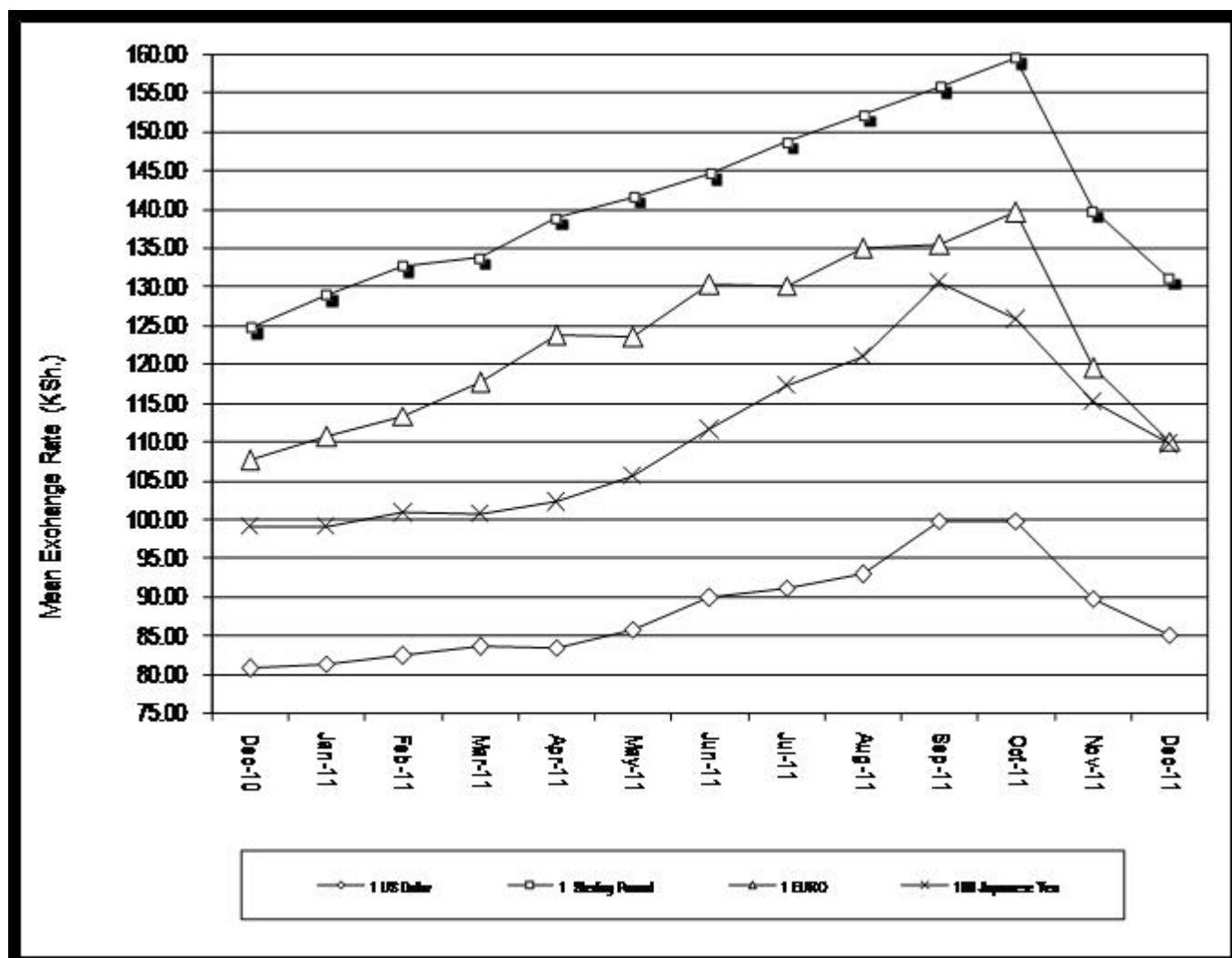


**TABLE 2: MEAN\* FOREIGN EXCHANGE RATES OF KENYA SHILLINGS AGAINST SELECTED MAJOR CURRENCIES AT THE END OF THE MONTH**

CURRENCY	2010	2011											
	Dec	Jan	Feb	Mar	Apr	May	June	July	Aug	Sep	Oct	Nov	Dec
1 US Dollar	80.752	81.272	82.364	83.551	83.419	85.704	89.864	91.1	92.849	99.832	99.778	89.7208	85.0681
1 Sterling Pound	124.767	128.982	132.686	133.741	138.908	141.626	144.619	148.744	152.151	155.775	159.557	139.8063	131.1185
1 EURO	107.628	110.61	113.37	117.673	123.742	123.469	130.21	130.164	134.963	135.382	139.621	119.5331	110.0599
100 Japanese Yen	99.123	99.05	100.789	100.763	102.176	105.522	111.552	117.211	121.034	130.539	125.784	115.0989	109.6942
1 SA Rand	12.201	11.332	11.746	12.181	12.617	12.392	13.22	13.459	13.039	12.5243	12.730	10.7088	10.3872
USHS/KES	28.569	28.362	28.617	28.761	28.411	27.892	30.324	28.623	30.424	28.548	26.018	28.6446	29.506
TSHS/KES	18.514	18.494	18.424	18.043	18.095	17.922	18.005	17.47	17.475	16.653	16.687	18.7806	18.8086

\* Mean of commercial banks buying and selling exchange rates prevailing at the end of the month

**FIG 2: END OF MONTH MEAN EXCHANGE RATE OF KENYA SHILLINGS AGAINST MAJOR SELECTED CURRENCIES**



**TABLE 3: INTEREST RATES (%)**

MONTHS	Average Yield Rates 91 - Days Treasury Bills	Rates for Commercial Banks Loans and Advances (Weighted Average)	Overdraft Rates	Inter - Bank Rates	Savings (Commercial Banks Rates)
<b>2010</b>					
October	2.12	13.85	13.64	0.98	1.46
November	2.21	13.95	13.77	1.05	1.40
December	2.28	13.87	13.69	1.16	1.45
<b>2011</b>					
January	2.44	14.03	13.93	1.24	1.25
February	2.59	13.20	13.65	1.13	1.41
March	2.77	13.69	13.60	1.25	1.37
April	3.26	13.92	13.68	4.08	1.39
May	5.35	13.88	13.72	5.56	1.38
June	8.95	13.91	13.59	8.30	1.37
July	8.99	14.13	13.88	8.54	1.37
August	9.23	14.32	14.28	15.55	1.37
September	11.93	14.79	14.64	7.40	1.34
October	14.80	15.21	14.87	14.67	1.33
November	16.14	18.48	18.56	28.72	1.41
December	17.898	20.04	20.2	22.14	1.59

Source : Central Bank of Kenya

FIG 3: INTEREST RATES

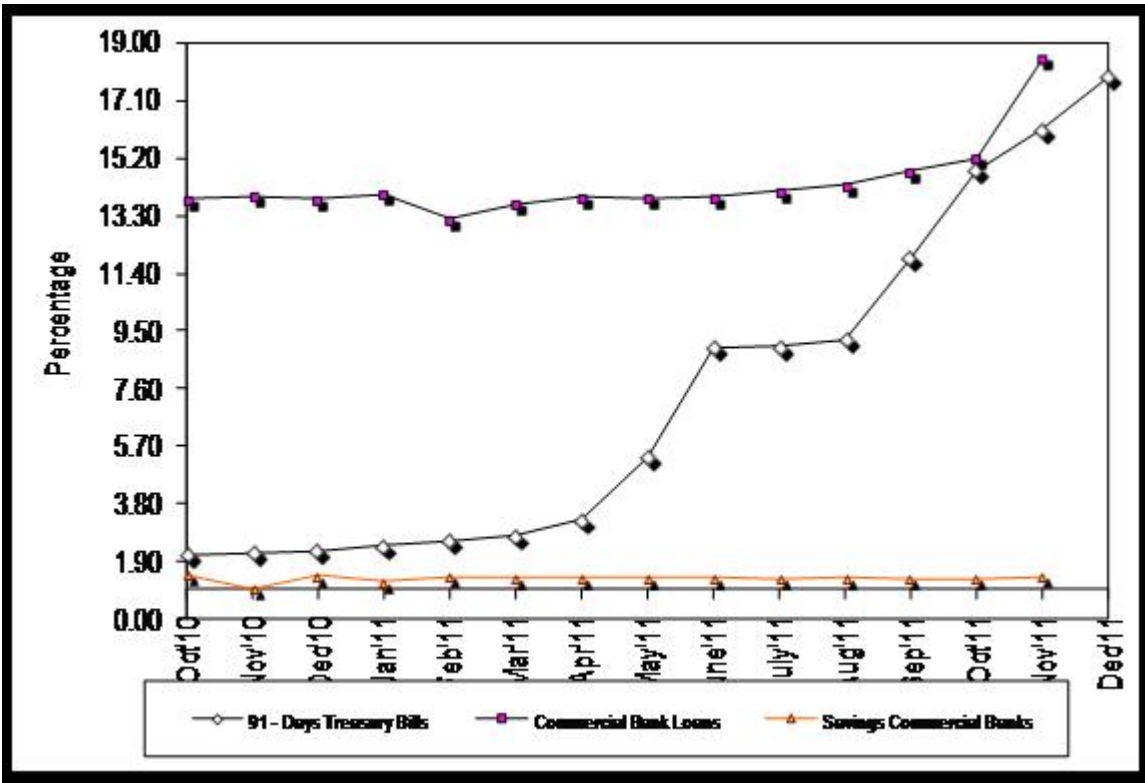


TABLE 4: CAPITAL MARKETS – NAIROBI STOCK EXCHANGE

MONTH	NUMBER OF TRANSACTIONS	NUMBER OF SHARES (Million)	VALUE OF SHARES (Million KSh)	Base Jan 1966=100
				SHARES INDEX
Dec-10	36,965	357.6	5,880	4,433
Jan-11	45,131	725.1	9,460	4,465
Feb-11	39,127	335.3	6,216	4,240
Mar-11	39,531	469.0	7,984	3,887
Apr-11	31,590	497.0	7,883	4,029
May-11	35,667	410.0	8,406	4,078
Jun-11	38,060	411.0	8,406	3,968
Jul-11	32,546	434.0	7,132	3,738
Aug-11	30,237	552.0	6,109	3,464
Sept-11	26,463	582.0	5,453	3,284
Oct-11	22,302	570.1	4,466	3,507
Nov-11	23,732	398.9	3,928	3,155
Dec-11	17,789	337.0	3,973	3,205

Source : Nairobi Stock Exchange

FIG 4: NAIROBI STOCK EXCHANGE SHARES INDEX

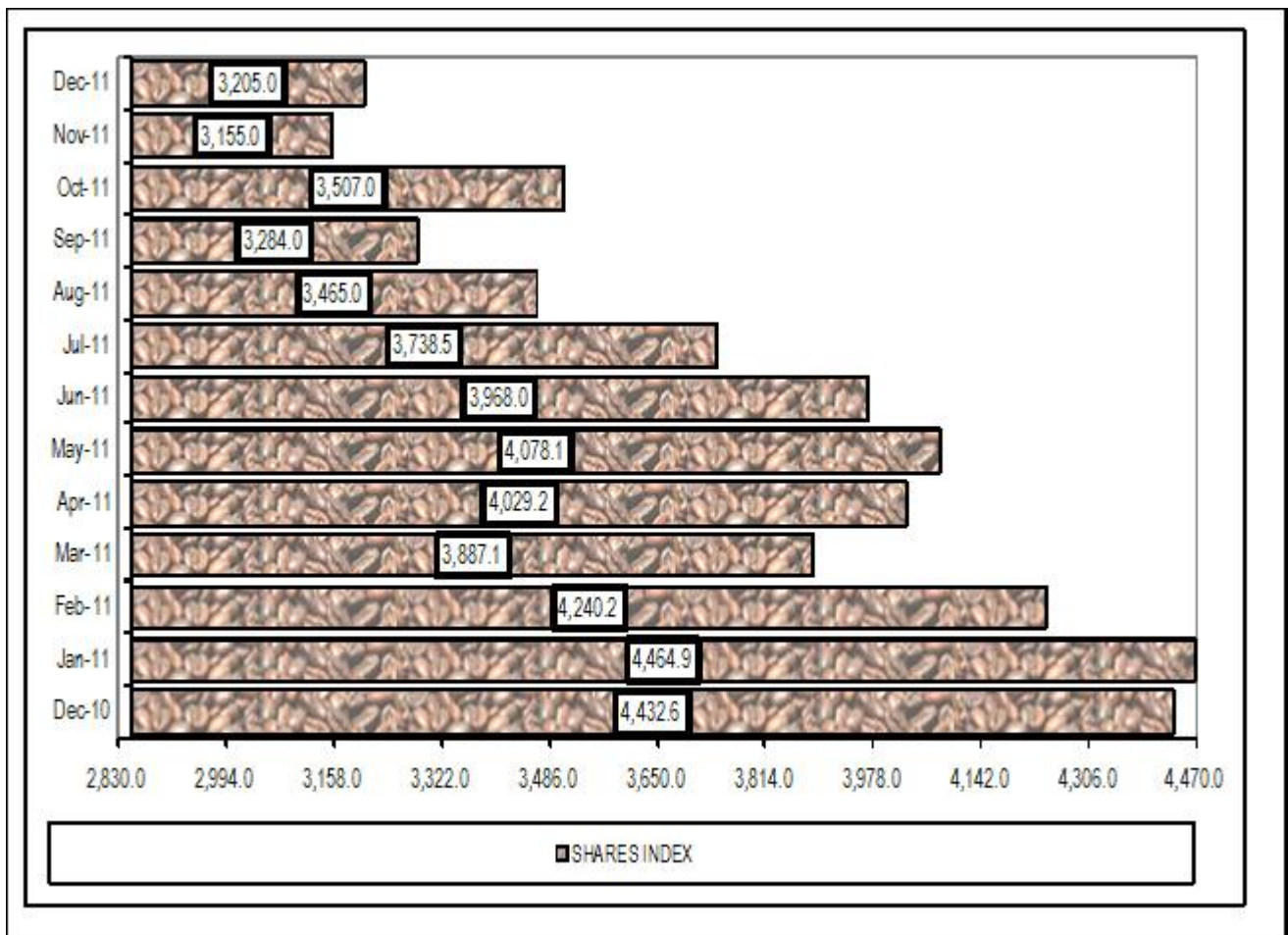


TABLE 5 (a): MONEY SUPPLY

As at end of month	MONEY AND QUASI MONEY (M2)					BROAD MONEY (M3)***	% CHANGE
	MONEY (M1)*	QUASI - MONEY		TOTAL (M2)			
		(Commercial Banks)**	(NBFIs)				
2010							
Oct-10	553,377	516,136	16,953	1,086,466	1,254,488	0.88	
Nov-10	562,671	510,179	15,817	1,088,667	1,258,812	0.34	
Dec-10	577,206	506,654	15,490	1,099,350	1,271,638	1.02	
2011							
Jan-11	575,904	522,208	15,789	1,114,012	1,285,452	1.09	
Feb-11	586,000	527,850	16,141	1,130,108	1,306,395	1.63	
Mar-11	603,414	525,611	15,978	1,145,150	1,324,685	1.40	
Apr-11	592,311	536,401	15,603	1,144,528	1,334,898	0.77	
May-11	605,559	543,595	15,933	1,183,978	1,357,592	1.70	
Jun-11	620,132	546,886	16,846	1,197,969	1,380,732	1.70	
Jul-11	624,466	557,043	16,328	1,203,265	1,412,702	2.32	
Aug-11	619,973	567,952	15,221	1,232,949	1,436,877	1.71	
Sep-11	627,711	587,157	17,939	1,240,252	1,484,198	3.29	
Oct-11	66,1745	560,262	15,529	1,183,978	1,513,656	1.98	
Nov-11	632,682	589,627	17,065	1,222,310	1,489,751	-1.58	
Dec-11	621,679	613,279	18,089	1,234,958	1,513,099	1.57	

Source : Central Bank of Kenya

\* Currency in circulation less cash in banks plus all demand deposits except those of Central Government, Local Government, Banks, non residents and foreign currency deposits.

\*\* All other deposits in commercial banks, except those of Central Government.

\*\*\* Broad Money (M3) includes M2 and Quasi - Money supplied by Non Bank Financial Institutions

FIG 5: MONEY SUPPLY (M3)

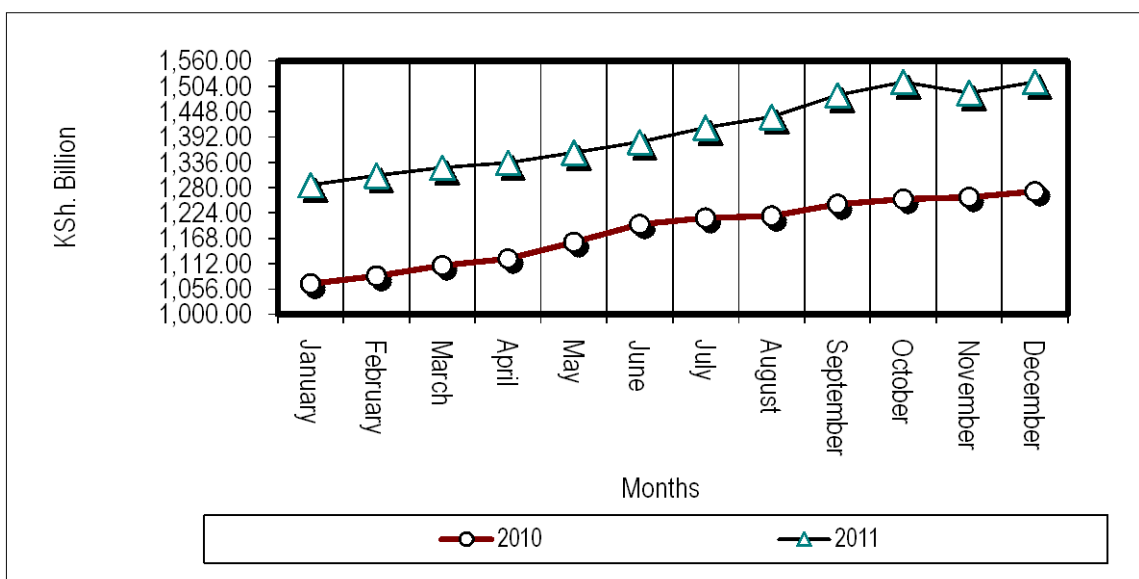


TABLE 5b: FOREIGN EXCHANGE RESERVES

						KSh. Million
MONTHS	CENTRAL MONETARY AUTHORITY			COMMERCIAL	GROSS	NET FOREIGN
	CENTRAL BANK	CENTRAL GOVERNMENT*	TOTAL	BANKS	TOTAL	EXCHANGE RESERVES ^
2010						
October	328,064	1699	329,626	98,214	427,840	276,005
November	326,079	1649	327,641	93,040	420,681	279,383
December	321,118	1656	322,680	90,510	413,190	273,444
2011						
January	321,544	1686	323,230	87,005	410,235	276,623
February	334,595	1717	336,312	112,307	448,619	284,249
March	340,096	1,739	341,835	109,254	451,089	287,694
April	349,103	1782	350,885	103,492	454,377	294,137
May	346,697	1,803	348,500	102,891	451,391	268,807
June	372,310	1884	374,194	99,422	473,616	283,281
July	377,846	1,948	379,794	116,907	496,701	294,514
August	391,925	2,013	393,938	137,983	531,921	321,296
September	397,850	2,013	399,863	147,064	546,927	312,092
October	394,160	2,013	396,173	192,647	588,820	336,066
November	358,218	2,013	360,231	132,080	492,310	290,889
December	359,652	2,013	36,1664	152,877	514,542	297,294

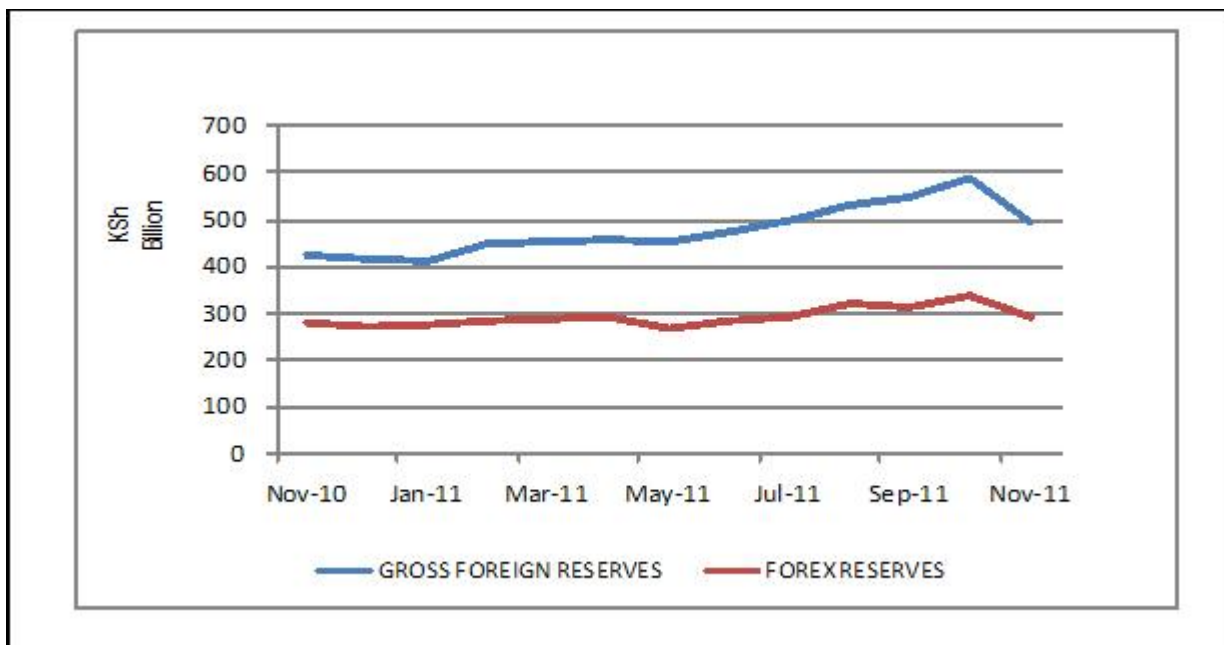
Source : Central Bank of Kenya

\*\*Central Government includes reserve position in the Fund and deposits with Crown Agents.

\*\* In June 2010, revision for some World Bank and IMF funds, previously excluded in Central Bank's reserves

^ Revised

FIG 6: FOREIGN EXCHANGE RESERVES



**TABLE 6: COFFEE SALES AND PRICES\***

Months	2009			2010			2011***		
	QUANTITY (MT)	PRICE (\$ /kg)	PRICE (Ksh /kg)	QUANTITY (MT)	PRICE (\$ /kg)	PRICE (Ksh /kg)	QUANTITY (MT)	PRICE (\$ /kg)	PRICE (Ksh /kg)
January	5,643	2.01	159.9	4,473	4.75	360.04	3,774	8.4	681.54
February	6,356	2.17	172.92	5,243	5.44	417.51	3,851	7.86	640
March	8,721	3.13	156.29	5,930	4.87	374.42	3,639	6.96	587.03
April	7,129	2.88	144.22	3,221	3.68	284.4	2,298	5.64	473.8
May**	5,763	2.69	210.43	2,496	3.05	239.34	0	0	0
June	4,297	2.64	205.71	1,699	2.86	232.55	1,136	6.56	595.83
July**	0	0	0	0	0	0	3,305	6.55	591.87
August	4,027	3.39	258.55	5,140	6.63	543.91	4,558	6.27	581.89
September	2,137	3.34	252.3	2,570	4.99	403.71	2,904	6.11	592.76
October	1,329	3.1	234.4	2,634	4.57	369.52	1,388	5.31	542.63
November	1,283	3.62	272.36	4,065	5.87	473.49	1,331	5.77	540.97
December	2,813	4.54	340.85	1,467	6.69	538.11	1,800	6.75	602.64
Annual	49,498	2.87	195.75	38,938	5.02	396.76	29,984	6.77	594.53

Source: Kenya Coffee Producers and Traders Association (K.C.P &TA)

\* Auction Price

\*\* Nairobi Coffee Exchange was in recess for most of July 2009,2010 and May 2011

\*\*\* Figures subject to revision

NB: MT denotes Metric Tonnes

**FIG.7: COFFEE SALES AT THE NAIROBI COFFEE EXCHANGE**

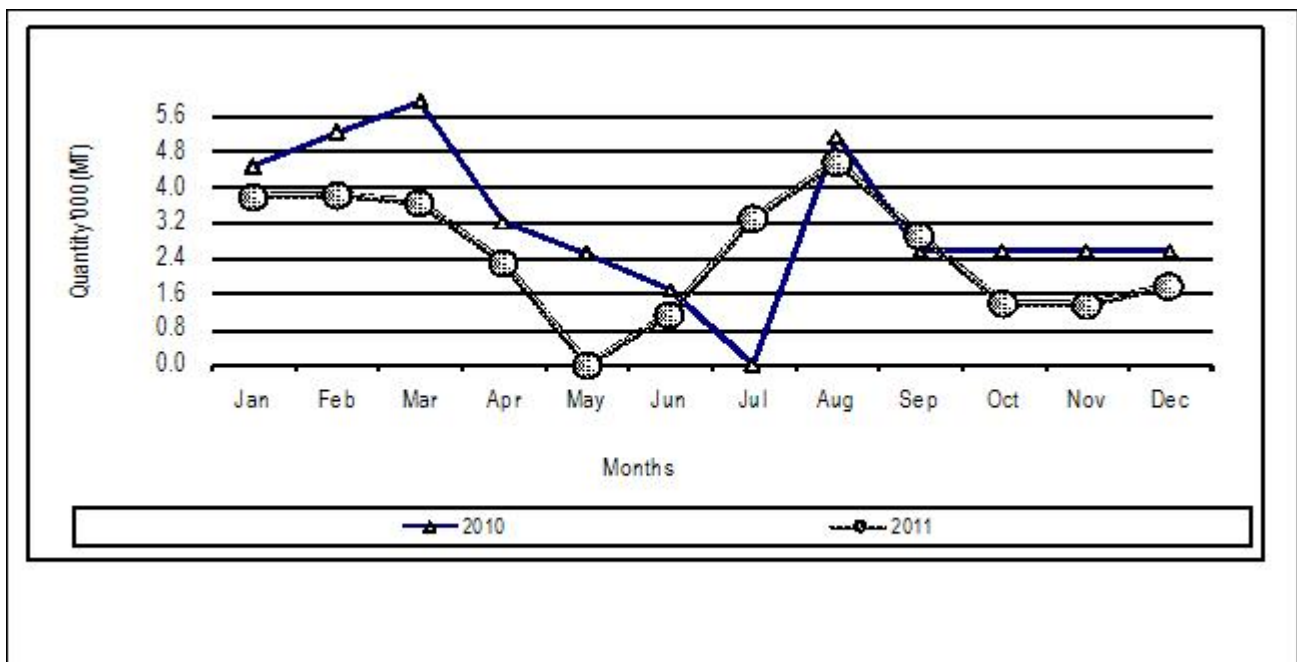


TABLE 7: TEA PRODUCTION AND AUCTION PRICES

Months	2009			2010			2011*		
	QUANTITY	PRICE	PRICE	QUANTITY	PRICE	PRICE	QUANTITY	PRICE	PRICE
	(MT)	(\$/kg)	(KShs/kg)	(MT)	(\$/kg)	(KShs/kg)	(MT)	(\$/kg)	(KShs/kg)
January	25,484	2.3	182.33	37,713	3	227.47	35,999	3.16	256.43
February	21,537	2.27	180.89	34,834	3.13	239.76	26,711	3.07	250.78
March	18,779	2.32	184.04	39,175	3.01	230.75	22,459	2.89	243.36
April	18,343	2.43	193.53	35,857	2.82	217.16	31,482	2.87	240.62
May	29,803	2.49	194.33	35,618	2.53	198.56	32,856	2.88	245.13
June	25,337	2.7	210.35	29,815	2.37	192.01	28,955	2.97	264.43
July	21,510	2.9	221.79	24,401	2.35	191.35	26,343	3.16	283.08
August	21,231	3.06	233.94	23,177	2.78	223.88	24,471	3.18	293.85
September	27,434	3.18	240.27	28,883	2.8	226.07	30,493	3.05	291.64
October	22,760	2.78	209.56	34,140	2.77	223.27	39,926	2.89	290.94
November	35,866	3.05	228.3	37,063	2.79	224.39	36,825	2.85	269.22
December	36,114	3.21	241.69	38,330	2.94	236.88	41,393	3.05	259.71
Annual	304,198	2.77	212.64	399,006	2.8	220.45	377,913	3.00	265.94

Source: Tea Board of Kenya

MT for Metric Tonnes

\*Figures subject to revision

FIG.8: TEA PRODUCTION

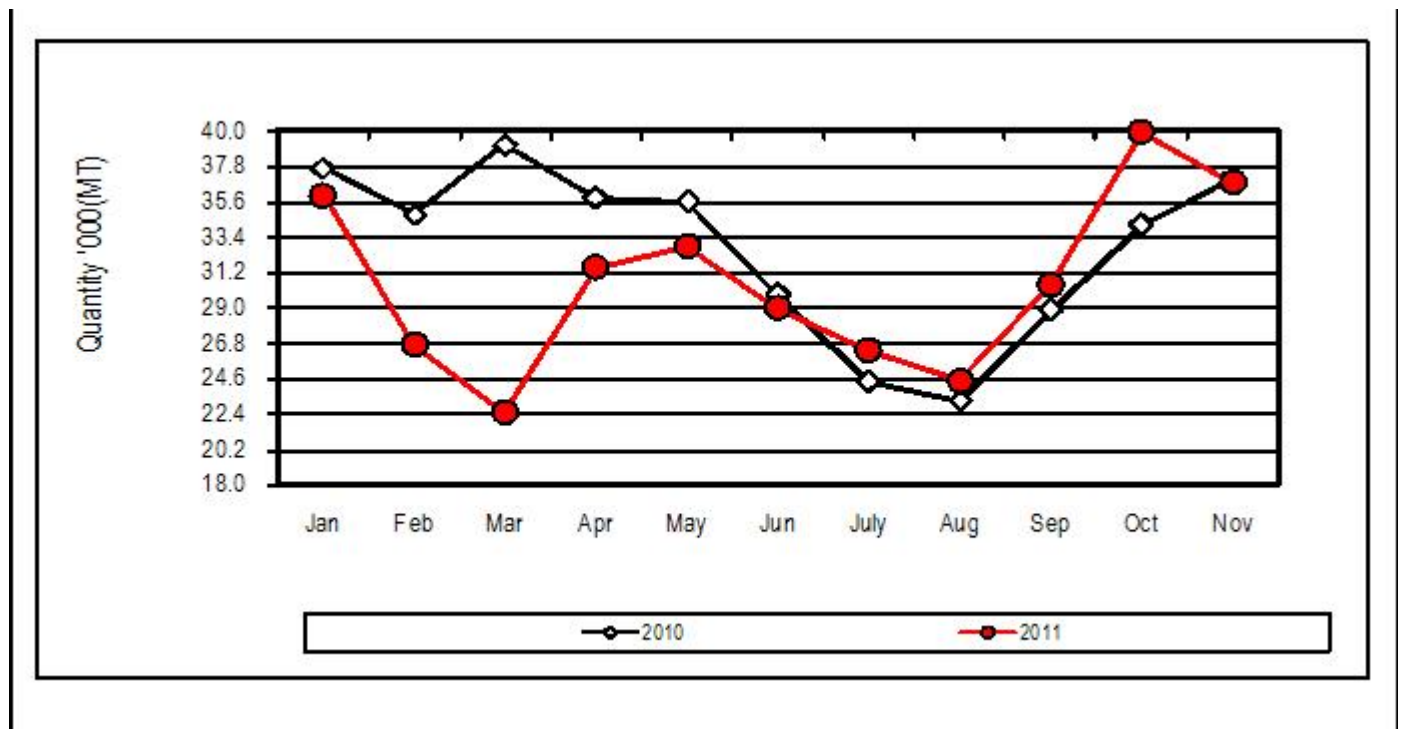


TABLE 8: CANE DELIVERIES

	000 Metric Tonnes	
Month	2010	2011
January	535.95	540,528
February	473.01	537,605
March	472.74	582,056
April	526.88	491,789
May	378.94	490,580
June	428.57	452,200
July	390.17	300,681
August	455.04	327,981
September	455.76	328,102
October	495.61	331,533
November	519.82	415,978
December	577.13	
Total	5709.59	

Source: Kenya Sugar Board

FIG.9: CANE DELIVERIES

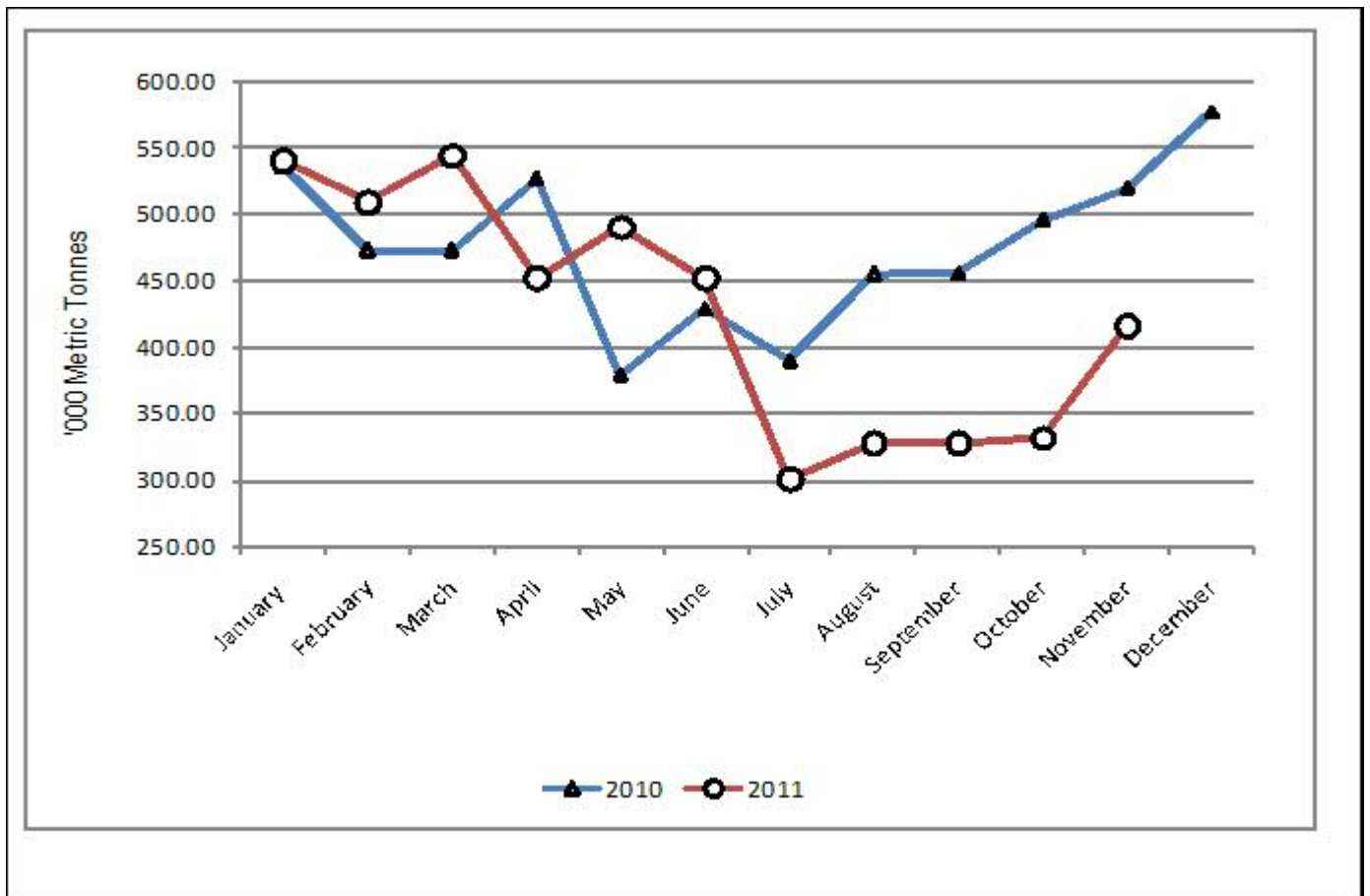


TABLE 9(A): AVERAGE MONTHLY RETAIL PRICES FOR DRY MAIZE IN THE YEAR 2010

Market/Month	JAN	FEB	MAR	APR	MAY	JUNE	JULY	AUG	SEPT	OCT	NOV	DEC
Market/Month	KSh/kg											
KIAMBU	17.50	17.50	16.50	17.50	17.50	.	18.25	17.50	20.00	17.50	20.00	20.00
LIMURU	20.00	20.00	20.00	20.00	20.00	.	16.75	15.00	17.50	17.50	17.50	17.50
THIKA	14.29	25.00	20.00	20.00	22.00	25.00	20.00	22.73	22.73	25.00	25.00	25.00
GATUNDU	19.00	20.00	25.00	25.00	20.00	22.73	20.00	22.73	22.73	23.81	25.00	20.00
KUTUS	.	.	.	.	22.73	13.04	14.00	13.04	13.04	13.64	13.64	.
SAGANA	.	.	.	.	22.73	20.83	21.43	13.66	15.91	14.29	.	.
KERUGOYA	.	.	.	.	18.18	18.18	15.91	15.91	13.64	15.22	.	.
MUTHITHI	14.29	14.29	16.67	16.67	16.67	16.67	14.29	14.29	14.29	14.29	19.05	19.05
MUKUYU	33.33	33.33	28.57	28.57	28.57	19.05	14.29	14.29	14.29	14.29	14.29	16.67
KIRIAINI	33.33	33.33	33.33	33.33	28.57	23.81	16.67	19.05	16.67	16.67	16.67	16.67
ENGINEER	.	.	30.00	30.00	27.27	22.73	25.00	20.45	.	20.00	18.18	18.18
NANYUKI	38.89	33.33	33.33	27.78	22.22	22.22	22.22	22.22	22.22	22.22	22.22	22.22
SIPILI	34.09	33.33	27.27	.	26.19	23.81	.	.	.	.	.	.
MARIAKANI	.	.	.	.	.	.	30.00	30.00	30.00	.	.	.
KALOLENI	.	.	.	.	.	27.00	27.00	25.00	25.00	.	.	.
MALINDI	35.00	30.00	30.00	30.00	25.00	25.00	.	.	.	20.00	20.00	18.79
KIBAUNI KILIFI	.	.	.	.	.	25.00	20.00	20.00	20.00	.	.	.
RUNYENJES	30.00	25.00	20.00	17.50	13.64	13.64	13.64	13.64	13.64	13.64	15.91	18.18
EMBU TOWN	31.50	27.50	20.00	20.00	13.64	15.91	13.64	13.64	13.64	13.64	18.18	18.18
SIAKAGO	32.50	22.50	20.00	17.50	17.50	15.00	15.00	14.29	17.14	34.42	15.91	19.05
MWINGI	.	.	.	.	.	19.00	19.09	20.00	20.00	20.00	18.00	20.00
MIGWANI	30.00	25.00	25.00	15.91	15.00	15.00	14.00	15.00	14.00	14.00	14.00	15.00
KALUNDU	.	.	.	.	20.00	20.00	20.00	18.00	18.00	18.00	18.00	.
MACHAKOS TOWN	28.50	28.00	.	20.00	20.00	17.00	15.00	18.00	15.00	17.00	17.00	18.00
TALA	.	.	.	.	10.00	10.00	10.00	.	.	11.00	.	.
KIANJAI	37.22	22.22	15.56	11.11	11.11	12.22	11.11	11.11	11.11	11.11	.	.
MWENDANTU	32.00	25.00	18.18	15.00	13.64	0.00	12.00	10.91	11.82	13.00	.	.
WOTE	28.00	25.00	.	18.00	18.00	17.00	15.00	17.00	17.00	17.00	17.00	17.00
DARAJA MBILI	22.73	23.64	24.09	25.00	22.73	18.18	22.73	15.91	18.18	19.05	22.73	22.73
KIBIRIGO	.	.	.	23.08	23.08	20.83	16.00	16.00	14.95	18.00	18.00	20.45
RIOSIRE	.	.	.	.	.	19.00	20.00	13.04	.	14.00	18.00	.
RIOCHANDA	.	.	22.92	22.92	18.75	16.00	14.00	14.00	14.00	18.00	16.00	18.00
NYABITE	.	.	.	20.00	18.00	18.75	16.00	14.00	15.00	18.00	16.00	18.00
MOGONGA	.	.	.	.	.	16.67	19.05	14.74	12.50	14.58	15.91	.
Nyamache	.	.	.	.	.	14.00	16.00	16.00	16.00	16.00	16.00	.
KIBUYE	29.55	28.18	27.27	27.27	20.45	18.18	15.91	.	.	.	.	.
AHERO	29.55	28.18	27.27	22.73	21.59	18.18	18.18	18.18	18.18	18.18	20.45	20.45
KIBOSWA	27.27	27.27	27.27	27.27	19.13	17.39	15.22	.	.	.	.	.
SONDU	29.55	29.55	25.00	20.45	20.45	18.18	18.18	15.91	15.91	15.91	20.45	.
BONDO	.	.	.	.	.	22.50	19.50	17.50	17.50	18.18	20.45	20.45
OYUGIS	25.00	26.73	28.57	27.27	18.18	18.18	17.39	15.91	17.86	.	.	.
NAKURU TOWN	.	.	.	.	.	.	.	.	.	27.78	27.78	.
KAPSABET	.	.	.	26.09	25.00	21.74	21.74	18.48	17.39	15.22	17.39	17.39
KITALE	35.00	35.00	32.50	25.00	22.50	25.00	.	20.00	17.50	16.67	15.00	15.00
ELDOROT	28.75	28.75	28.75	27.50	25.00	25.00	22.50	22.50	20.00	17.50	17.50	.
BURNT FOREST	.	.	.	22.73	22.73	25.00	23.75	15.00	22.50	20.00	.	20.00
TURBO	22.00	22.00	22.00	24.00	20.00	20.80	18.00	18.48	18.00	14.00	11.20	10.40
KIPKAREN	24.00	30.00	27.50	25.00	25.00	22.50	25.00	25.00	10.80	12.00	14.00	.
BUNGOMA TOWN	30.00	.	.	22.73	20.45	18.18	18.18	18.18	18.18	14.58	18.18	.
KIMILILI	30.00	25.00	25.00	20.83	20.83	.	18.00	18.00	16.00	12.50	12.00	.
KAPSOKWONY	23.91	25.22	23.91	21.74	19.23	17.69	17.31	17.31	19.05	.	12.50	.
BUMALA	23.81	23.81	28.57	.	.	.	.	.	.	16.67	.	.
BUSIA TOWN	21.43	21.43	18.10	18.10	.	.	.	.	.	16.67	.	.
KAKAMEGA TOWN	29.55	27.27	27.27	27.27	22.73	20.45	20.45	20.45	18.18	18.18	15.91	15.91
MUDETE	28.57	23.81	22.38	21.43	21.43	19.05	21.43	21.43	19.05	16.67	16.67	16.67
CHEPTULU	28.57	26.19	26.19	21.43	19.05	19.05	16.67	19.05	16.67	16.67	16.67	18.10
MBALE	28.57	23.81	20.48	21.43	19.05	23.81	20.48	21.43	19.05	16.67	16.67	18.10
KAWANGWARE	34.09	34.76	30.95	30.95	23.81	22.73	22.22	22.22	20.00	17.39	19.05	20.00
BURMA	35.00	30.00	30.00	30.00	25.00	23.00	23.00	23.00	20.00	20.00	20.00	20.00
GIKOMBA	35.71	32.50	32.50	30.00	21.43	22.50	22.73	23.81	22.22	22.73	20.00	19.05
KANGEMI	30.95	30.95	30.95	30.00	22.73	21.43	22.73	22.73	22.22	17.39	20.00	19.05
KOROGOCHO	33.33	30.95	30.95	28.57	22.73	21.74	21.43	20.45	20.45	20.45	20.00	20.00
KIBERA(TOI)	33.33	32.50	31.58	30.95	23.68	21.43	21.43	21.74	20.00	20.00	19.05	20.00
Average	28.60	26.85	25.51	23.52	20.48	19.43	18.57	18.14	17.68	17.40	17.99	18.63
Source Kenya National Bureau of Statistics												
- data not available												

**TABLE 9(B): AVERAGE MONTHLY RETAIL PRICES FOR DRY MAIZE IN THE YEAR 2011**

Market/Month	KSh/kg											
	JAN	FEB	MAR	APR	MAY	JUNE	JULY	AUG	SEPT	OCT	Nov	Dec
KIAMBU	22.50	22.50	22.50	35.00	45.00	50.00	55.00	.	.	40.00	45.00	.
LIMURU	20.00	20.00	27.50	37.50	45.00	50.00	50.00	.	.	40.00	45.00	.
THIKA	23.81	30.00	28.57	31.82	35.00	50.00	100.00	40.00	40.00	40.00	.	.
GATUNDU	23.81	25.00	40.00	35.00	35.00	50.00	55.00	40.00	37.50	21.43	.	.
KUTUS	22.73	25.00	27.27	30.95	43.48	43.48	47.83	.	.	34.78	40.91	40.91
SAGANA	22.73	27.27	26.09	35.00	37.50	41.67	54.55	.	.	36.36	36.36	36.36
KERUGOYA	22.73	25.00	26.09	45.00	43.48	47.83	47.83	.	.	39.13	43.48	40.91
MUTHITHI	19.05	19.05	28.57	30.95	38.10	40.48	95.24	38.10	38.10	36.90	38.10	.
MUKUYU	23.81	23.81	26.19	30.95	38.10	38.10	57.14	38.10	38.10	38.10	38.10	40.48
KIRIAINI	21.43	21.43	.	35.71	38.10	47.62	52.38	47.62	42.86	40.48	40.48	40.48
ENGINEER	19.05	18.18	20.00	33.33	35.00	.	50.00	45.45	45.45	40.00	36.36	.
NYERI	25.00	30.00	30.00	42.50	42.50	50.00	.	.	.	.	.	.
KARATINA	20.00	22.50	22.50	25.00	50.00	50.00	.	.	.	.	.	.
GAKINDU	22.50	20.00	25.00	30.00	40.00	45.00	.	.	.	.	.	.
NANYUKI	42.36	22.22	27.78	38.89	44.44	50.00	55.56	61.11	50.00	47.22	45.92	44.44
SIPILI	.	.	.	29.55	35.00	.	50.00	.	38.10	22.73	36.36	36.36
MARIAKANI	.	.	.	.	.	.	40.00	50.00	45.00	45.00	45.00	.
KALOLENI	.	.	.	.	.	.	45.00	50.00	50.00	47.50	.	.
MALINDI	20.00	25.00	25.00	.	.	.	.	.	50.00	40.00	42.00	45.00
KIBAUNI KILIFI	.	.	.	.	.	.	45.00	50.00	50.00	45.00	45.00	.
KWALE	30.00	30.00	30.00	34.50	36.80	40.00	41.00	50.00	61.25	68.00	68.75	51.75
MWEMBE TAYARI	25.20	36.00	48.75	47.50	58.00	67.25	63.00	51.25	55.00	50.00	50.00	51.25
MAJENGO	25.00	34.75	48.75	48.75	44.60	44.75	44.60	41.50	42.25	43.80	44.75	43.25
MACKINON	.	.	.	.	.	.	.	.	.	50.00	48.75	48.75
SEGA	24.00	26.25	35.00	35.00	33.00	50.00	45.00	43.75	40.00	.	.	.
KONGOWEA	20.80	25.50	32.25	35.00	38.60	47.50	41.80	39.50	36.50	40.00	.	.
GARSEN	.	.	.	.	.	.	.	.	.	.	50.00	.
RUNYENJES	20.45	22.73	25.00	27.27	36.36	44.32	50.00	40.91	36.36	40.91	40.91	40.91
EMBU TOWN	20.45	22.73	22.73	31.82	43.18	45.45	50.00	40.91	36.36	40.91	40.91	40.91
SIKAGO	23.81	23.81	23.81	28.57	40.30	50.00	52.38	47.62	42.86	40.48	42.86	.
MWINGI	20.00	22.73	25.00	34.00	36.00	50.00	50.00	38.00	36.00	35.00	40.00	38.00
MIGWANI	20.00	20.00	25.00	30.00	42.00	45.00	50.00	42.00	40.00	.	40.00	.
KALUNDU	.	.	.	.	.	.	.	38.00	36.00	37.00	42.00	.
MACHAKOS TOWN	20.00	20.00	25.00	.	42.00	45.00	49.00	47.37	38.00	40.05	38.00	38.00
TALA	18.00	17.00	18.00	.	35.00	50.00	48.00	38.10	45.00	45.00	42.86	.
MAUA	20.00	.	.	.	.	62.50	50.00	50.00	56.25	50.00	50.00	.
KIANJAI	25.56	22.22	26.67	34.44	35.56	.	55.56	44.44	44.44	38.89	42.22	.
MWENDANTU	17.00	.	22.73	27.27	36.36	.	45.45	40.91	40.91	36.36	36.36	.
WOTE	20.00	20.00	20.00	35.00	45.00	45.00	45.00	40.00	40.00	45.00	42.00	42.00
DARAJA MBILI	21.43	20.45	.	35.71	47.62	.	54.55	38.64	40.91	38.64	43.18	45.45
KIBIRIGO	18.75	20.83	22.00	42.50	50.00	54.76	50.00	41.67	37.50	.	.	.
RIOSIRE	21.05	20.45	30.95	30.95	40.48	.	45.45	38.64	45.45	40.91	47.83	39.58
RIOCHANDA	17.39	20.00	20.00	35.00	42.86	52.38	50.00	39.13	36.00	.	40.63	.
NYABITE	16.67	20.00	24.00	.	50.00	56.00	56.00	37.50	37.50	.	37.50	.
MOGONGA	18.18	26.32	25.00	43.18	.	.	59.09	40.91	40.00	.	45.45	40.91
NYAMACHE	20.00	24.00	28.00	40.00	50.00	.	50.00	34.78	45.83	45.45	41.30	.
KIBUYE	20.45	25.00	28.03	40.00	.	59.09	40.91	43.18	40.91	40.91	38.64	.
AHERO	22.73	27.27	29.55	38.10	45.24	50.00	54.55	50.00	34.09	40.91	.	.
KIBOSWA	.	22.73	25.65	40.00	40.00	56.52	36.36	36.36	36.36	34.09	34.09	34.09
SONDU	20.45	25.00	.	38.10	50.00	.	54.55	45.45	34.09	38.64	.	.
BONDO	.	.	.	.	.	.	50.00	50.00	49.00	47.50	.	.
OYUGIS	22.73	28.57	29.55	38.64	56.82	59.52	40.48	.	.	.	.	.
KABARNET	.	.	.	.	.	.	45.00	50.00	40.00	40.00	.	.
NAKURU TOWN	22.22	27.78	27.78	27.78	27.78	72.22	66.67	66.67	55.56	55.56	.	.
KAPSABET	20.45	21.74	26.09	42.86	45.45	52.17	56.52	43.48	34.78	34.78	34.78	34.78
KITALE	15.00	25.00	25.00	45.00	60.00	60.00	54.17	46.21	40.00	31.25	35.00	.
ELDORET	20.00	25.00	25.00	40.00	43.75	50.00	.	60.00	.	40.00	40.00	40.00
BURNT FOREST	17.50	20.00	20.00	40.00	.	.	.	50.00	.	45.00	37.50	.
TURBO	15.22	16.00	25.00	30.00	42.86	.	.	56.00	32.00	24.00	24.00	20.00
KIPKAREN	17.50	25.00	27.50	45.00	50.00	55.00	.	45.00	.	32.50	35.00	35.00
ITEN	.	.	.	.	.	.	.	.	42.50	42.50	35.00	35.00
BUNGOMA TOWN	18.75	18.18	29.55	.	47.73	56.82	54.17	33.33	29.17	26.04	34.78	40.48
KIMILILI	19.05	18.18	27.27	.	41.82	54.76	56.52	32.61	30.43	30.43	31.25	34.09
KAPSOKWONY	15.91	15.91	22.73	.	43.18	57.14	54.17	37.50	33.33	32.61	32.61	33.33
BUTERE	16.52	.	.	36.36	40.91	59.09	.	31.82	29.17	30.43	33.33	33.33
KAKAMEGA TOWN	15.91	25.00	29.55	43.18	52.27	.	56.82	.	33.33	33.33	35.71	36.36
MUMIAS	.	.	.	.	.	.	.	31.82	29.17	32.61	38.10	42.86
MUDETE	15.91	19.05	28.57	.	47.62	.	52.38	47.62	42.86	40.48	40.48	38.10
CHEPTULU	16.67	23.81	28.57	.	47.62	.	52.38	47.62	40.91	40.91	40.48	40.48
MBALE	21.43	23.81	28.57	.	47.62	.	57.14	47.62	45.24	38.10	38.10	40.48
KAWANGWARE	23.81	22.73	22.73	35.71	42.86	47.62	50.00	50.00	47.62	40.91	38.64	38.10
BURMA	25.00	25.00	25.00	38.00	40.00	50.00	.	50.00	50.00	45.00	40.00	40.00
KIKOMBA	22.50	23.81	23.81	38.10	45.24	47.50	47.62	47.62	47.62	38.10	36.36	38.10
KANGEMI	23.81	23.81	23.81	35.71	42.86	50.00	50.00	50.00	50.00	42.86	38.64	40.91
KOROGOCHO	22.50	22.73	.	35.00	42.50	42.50	45.45	45.45	47.62	40.91	36.96	38.10
KIBERA(TOI)	25.00	23.81	23.81	44.74	47.50	55.00	52.38	52.38	47.62	40.00	38.10	36.36
Total	22.34	25.22	30.32	37.54	43.40	51.21	51.00	44.72	42.97	41.75	42.42	41.27



TABLE 9(C): AVERAGE MONTHLY RETAIL PRICES FOR DRY BEANS (2010)

Market/Month	JAN	FEB	MAR	APR	MAY	JUNE	JULY	AUG	SEPT	OCT	NOV	DEC
KIAMBU	60.00	60.00	65.00	60.00	60.00	.	67.50	60.00	80.00	80.00	70.00	70.00
LIMURU	70.00	70.00	70.00	70.00	60.00	.	60.00	60.00	70.00	70.00	70.00	70.00
THIKA	50.00	65.00	67.50	65.00	65.00	.	59.09	54.55	54.55	70.00	68.00	65.00
GATUNDU	66.67	70.00	75.00	75.00	65.00	60.00	59.09	57.14	57.14	75.00	70.00	65.00
KUTUS	.	.	.	.	62.50	56.00	56.00	60.87	54.55	59.09	.	.
SAGANA	.	.	.	.	69.57	67.39	74.46	66.18	76.19	78.26	.	.
KERUGOYA	.	.	.	.	63.64	65.22	63.64	63.64	60.87	63.64	.	.
MUTHITHI	42.86	42.86	38.10	54.76	61.90	61.90	61.90	61.90	57.14	61.90	57.14	57.14
MUKUYU	60.87	60.87	60.87	60.87	60.87	60.87	52.17	52.17	52.17	52.17	52.17	54.35
KIRIAINI	60.87	60.87	60.87	56.52	56.52	56.52	56.52	56.52	56.52	56.52	56.52	56.52
ENGINEER	.	.	75.00	75.00	57.14	54.17	68.42	54.55	.	54.55	54.55	54.55
NANYUKI	72.73	90.00	72.73	77.78	88.89	77.78	66.67	55.56	77.78	66.67	77.78	77.78
MARIAKANI	.	.	.	.	.	.	60.00	50.00	50.00	.	.	.
KALOENI	.	.	.	.	.	70.00	70.00	60.00	60.00	.	.	.
MALINDI	70.00	65.00	65.00	65.00	60.00	60.00	.	.	.	54.55	53.52	61.36
KIBAUNI KILIFI	.	.	.	.	.	70.00	65.00	60.00	60.00	.	.	.
RUNYENJES	55.00	.	60.00	60.00	50.00	54.55	54.55	59.09	54.55	54.55	.	59.09
EMBU TOWN	57.50	55.00	57.50	60.00	52.17	54.55	54.55	59.09	54.55	59.09	.	59.09
SIKAGO	60.00	60.00	60.00	55.00	60.00	50.00	55.00	50.00	52.27	.	54.55	54.55
MWINGI	.	.	.	.	.	60.00	47.73	50.00	50.00	50.00	60.00	55.00
MIGWANI	55.00	60.00	60.00	54.85	60.00	54.55	50.00	50.00	50.00	50.00	50.00	50.00
KALUNDU	.	.	.	.	60.00	60.00	60.00	60.00	60.00	60.00	70.00	.
MACHAKOS TOWN	60.00	53.00	.	60.00	20.00	55.00	60.00	70.00	50.00	60.00	60.00	60.00
TALA	.	.	.	.	60.00	57.00	58.00	.	.	60.00	.	.
KIANJAI	52.78	44.44	52.78	50.00	44.44	47.78	44.44	44.44	50.00	50.00	.	.
MWENDANTU	58.00	54.55	59.09	60.00	59.09	50.00	54.55	50.00	50.00	60.00	.	.
WOTE	58.00	54.00	.	70.00	60.00	58.00	50.00	58.00	65.00	60.00	60.00	60.00
DARAJA MBILI	60.00	55.00	57.50	43.48	45.91	50.00	45.45	52.38	50.00	45.65	45.65	41.30
KIBIRIGO	.	.	.	52.17	44.00	45.45	45.45	45.45	45.45	47.83	43.48	43.48
RIOSIRE	.	.	.	.	.	52.38	57.14	36.36	.	52.38	52.27	.
RIOHANDA	.	.	.	44.00	48.00	45.45	45.45	50.00	55.49	52.17	45.83	47.83
NYABITE	.	.	.	44.00	44.00	45.45	45.45	52.38	47.73	47.83	52.17	52.17
MOGONGA	.	.	.	.	.	38.10	38.10	57.14	30.00	35.00	47.83	.
Nyamache	.	.	.	.	.	52.17	54.55	45.45	45.45	45.45	43.48	.
KIBUYE	63.64	63.64	60.87	63.64	52.17	52.17	52.17	.	.	.	.	.
AHERO	54.55	54.55	54.55	61.36	58.12	57.14	57.14	50.00	50.00	53.57	57.14	59.09
KIBOSWA	63.64	60.87	63.64	63.64	50.00	54.55	45.45	.	.	.	.	.
SONDU	54.55	54.55	59.09	59.09	57.14	50.00	50.00	52.38	50.00	50.00	54.55	.
BONDO	.	.	.	.	.	84.00	75.00	80.00	70.68	56.52	52.17	54.35
OYUGIS	54.55	55.68	59.52	54.35	61.36	61.36	57.14	63.64	59.09	.	.	.
NAKURU TOWN	.	.	.	.	.	.	.	.	.	44.44	44.44	.
KAPSABET	.	.	.	60.87	63.04	52.17	60.87	60.87	65.22	60.87	52.17	60.87
KITALE	65.91	68.18	61.36	63.64	68.18	68.18	60.00	54.55	54.55	59.09	54.55	54.55
ELDOROT	65.91	63.64	70.34	72.73	70.00	68.18	54.55	59.09	50.00	63.64	54.55	.
BURNT FOREST	.	.	.	68.18	68.18	45.45	61.36	68.18	59.09	63.64	.	68.18
TURBO	56.00	60.00	56.00	60.00	.	65.22	50.00	45.45	52.38	43.48	57.50	52.17
KIPKAREN	63.64	61.36	60.23	54.55	63.64	22.50	36.36	45.45	40.91	54.55	54.55	.
BUNGOMA TOWN	55.07	.	.	54.55	50.00	50.00	35.83	45.83	41.67	41.67	43.48	.
KIMILILI	60.00	54.55	54.55	40.00	41.67	.	41.67	40.00	36.00	36.54	39.13	.
KAPSOKWONY	47.83	47.83	52.17	43.48	37.23	34.62	40.00	50.00	45.45	45.45	40.00	.
BUMALA	57.14	57.14	61.90	.	.	.	.	.	.	61.90	.	.
BUSIA TOWN	66.67	66.67	66.67	.	.	.	.	.	.	66.67	.	.
KAKAMEGA TOWN	64.77	68.18	68.18	70.45	72.73	54.55	54.55	59.09	54.55	54.55	54.55	54.55
MUDETE	80.95	71.43	71.43	76.19	71.43	71.43	76.19	71.43	71.43	71.43	71.43	80.95
CHEPTULU	80.95	71.43	71.43	71.43	71.43	71.43	71.43	71.43	71.43	71.43	71.43	76.19
MBALE	80.95	76.19	71.43	71.43	71.43	76.19	71.43	71.43	71.43	71.43	71.43	80.95
KAWANGWAR E	72.73	68.18	63.64	66.67	69.05	72.50	65.91	65.91	64.44	70.00	69.05	80.00
BURMA	80.00	80.00	80.00	80.00	75.00	70.00	70.00	70.00	65.00	65.00	65.00	65.00
GIKOMBA	85.00	77.27	72.73	70.00	73.81	71.43	70.45	72.73	64.00	76.19	72.73	76.19
KANGEMI	76.19	90.48	68.18	69.05	71.43	68.18	69.05	71.43	66.67	68.18	75.00	72.73
KOROGOCHO	82.50	82.50	80.00	72.73	69.57	65.22	65.22	65.22	66.67	70.00	71.43	76.19
KIBERA(TOI)	76.19	75.00	75.00	75.00	75.00	63.64	65.91	66.67	60.00	72.50	71.43	76.19
Average	63.80	63.75	64.00	62.10	60.01	57.99	57.22	57.52	56.76	58.64	58.06	62.23

Source: Kenya National Bureau of Statistics  
- data not available

**TABLE 9(D): AVERAGE MONTHLY RETAIL PRICES FOR DRY BEANS (2011)**

Market/Month	JAN	FEB	MAR	APR	MAY	JUNE	JULY	AUG	SEPT	OCT	NOV	DEC
KIAMBU	40.00	75.00	70.00	90.00	90.00	95.00	95.00	.	.	80.00	80.00	.
LIMURU	40.00	75.00	75.00	90.00	90.00	95.00	95.00	.	.	80.00	80.00	.
THIKA	45.45	41.67	66.67	76.19	80.00	98.00	100.00	70.00	70.00	80.00	.	.
GATUNDU	61.90	80.95	80.95	85.00	80.95	100.00	95.24	85.00	90.48	.	.	.
KUTUS	54.55	54.55	63.64	76.19	69.57	73.91	69.57	.	.	69.57	65.22	69.05
SAGANA	68.18	68.18	81.82	76.19	77.27	81.82	65.22	.	.	85.71	80.43	78.26
KERUGOYA	59.09	68.18	68.18	85.00	73.91	69.57	60.87	.	.	69.57	78.26	78.26
MUTHITHI	57.14	57.14	71.43	66.67	71.43	76.19	71.43	66.67	66.67	69.05	66.67	.
MUKUYU	52.17	56.52	56.52	66.67	69.57	71.74	60.87	60.87	60.87	60.87	60.87	65.22
KIRIAINI	56.52	56.52	60.87	65.22	73.91	73.91	65.22	60.87	60.87	60.87	65.22	65.22
ENGINEER	54.55	54.55	54.55	72.73	72.73	.	81.82	72.73	90.00	72.73	81.82	.
NYERI	80.00	80.00	.	100.00	100.00	100.00	.	.	.	.	.	.
KARATINA	110.00	95.24	75.00	75.00	100.00	100.00	.	.	.	.	.	.
GAKINDU	71.43	95.24	66.67	71.43	76.19	80.95	.	.	.	.	.	.
NANYUKI	77.78	88.89	77.78	88.89	88.89	88.89	88.89	88.89	88.89	88.89	88.89	88.89
SIPILI	.	.	.	40.00	80.00	.	69.57	.	68.18	68.18	60.87	60.87
MARIAKANI	.	.	.	.	.	.	90.00	70.00	80.00	80.00	80.00	.
KALOLENI	.	.	.	.	.	.	100.00	80.00	80.00	80.00	.	.
MALINDI	65.00	65.00	65.00	.	.	.	.	80.00	80.00	80.00	85.00	85.00
KIBAUNI KILIFI	.	.	.	.	.	.	100.00	80.00	80.00	80.00	80.00	.
KWALE	68.00	68.00	68.00	.	.	70.00	70.00	83.00	96.00	102.40	113.00	80.00
MWEMBE TAYARI	78.00	80.00	91.25	91.25	94.20	97.50	97.00	98.75	103.75	103.33	92.50	97.50
MAJENGO	79.00	81.25	91.25	83.75	81.60	82.25	85.80	78.25	79.50	78.60	80.00	80.50
MACKINON	.	.	.	.	.	.	.	.	.	88.33	75.00	70.00
SEGA	62.00	60.00	77.50	82.00	82.00	76.25	83.00	85.00	85.00	.	.	.
KONGOWEA	50.00	60.00	70.75	76.75	75.00	73.75	78.40	85.00	82.50	78.00	.	.
GARSEN	.	.	.	.	.	.	.	.	.	.	80.00	.
RUNYENJES	56.82	63.64	68.18	68.18	59.09	72.73	68.18	68.18	59.09	68.18	68.18	68.18
EMBU TOWN	59.09	.	71.43	68.18	68.18	72.73	68.18	68.18	68.18	68.18	68.18	68.18
SIKAKAGO	63.64	59.09	63.64	.	73.21	71.43	68.18	68.18	68.18	81.82	68.18	.
MWINGI	50.00	54.55	70.00	70.00	70.00	90.00	65.00	70.00	70.00	70.00	60.00	70.00
MIGWANI	50.00	50.00	60.00	70.00	70.00	70.00	70.00	75.00	70.00	.	70.00	.
KALUNDU	.	.	.	.	.	.	.	80.00	.	80.00	70.00	.
MACHAKOS TOWN	60.00	60.00	70.00	.	70.00	80.00	80.00	80.00	70.00	100.00	80.00	80.00
TALA	57.14	57.14	66.67	.	75.00	80.00	78.00	60.00	80.00	80.00	70.00	.
MAUA	80.00	.	.	.	.	87.50	87.50	87.50	87.50	100.00	93.75	.
KIANJAI	51.11	55.56	59.37	72.22	65.66	.	77.78	77.78	77.78	88.89	77.78	.
MWENDANTU	54.55	.	.	68.18	68.18	.	65.00	63.64	68.18	68.18	68.18	.
WOTE	60.00	60.00	80.00	70.00	80.00	70.00	70.00	75.00	75.00	80.00	75.00	80.00
DARAJA MBILI	48.00	54.55	75.00	90.48	72.73	75.00	76.25	55.56	56.52	60.87	.	.
KIBIRIGO	54.55	50.00	50.00	71.43	83.33	77.27	72.73	72.73	64.00	.	.	.
RIOSIRE	64.29	43.18	50.00	71.43	96.88	.	75.00	72.00	52.27	54.17	60.00	52.08
RIOCHANDA	54.55	54.55	54.55	71.43	79.17	75.00	60.00	77.27	70.83	.	64.13	.
NYABITE	50.00	54.55	54.55	.	79.11	77.27	68.18	61.36	60.00	.	54.35	.
MOGONGA	43.48	63.64	61.36	73.81	.	.	91.30	65.22	54.17	.	65.22	52.17
NYAMACHE	50.00	50.00	50.00	85.71	95.45	.	83.33	70.83	54.55	65.22	63.04	.
KIBUYE	58.70	60.87	68.18	76.19	.	95.65	72.73	86.36	81.82	78.26	78.26	.
AHERO	61.90	61.90	66.67	80.95	85.71	95.24	95.24	80.95	76.19	76.19	.	.
KIBOSWA	.	63.64	65.91	85.71	95.24	95.65	69.57	65.22	65.22	73.91	69.57	78.26
SONDU	61.90	66.67	.	83.33	88.10	.	85.71	76.19	71.43	76.19	.	.
BONDO	.	.	.	.	.	.	97.50	100.00	90.00	90.00	.	.
OYUGIS	59.09	63.64	60.87	95.45	.	86.36	86.36	.	.	.	.	.
KABARNET	.	.	.	.	.	.	70.00	70.00	70.00	70.00	.	.
NAKURU TOWN	44.44	66.67	77.78	66.67	66.67	88.89	77.78	77.78	77.78	88.89	.	.
KAPSABET	68.18	60.87	65.22	85.71	90.91	119.57	78.26	86.96	86.96	82.61	78.26	86.96
KITALE	63.64	63.64	68.18	77.27	90.91	90.91	54.17	70.08	68.18	66.67	75.00	.
ELDORET	59.09	65.00	70.00	81.82	86.36	90.91	.	72.73	.	68.18	68.18	68.18
BURNT FOREST	68.18	68.18	68.18	81.82	.	.	.	68.18	.	68.18	72.73	.
TURBO	52.17	57.14	60.00	70.00	100.00	.	.	65.00	80.00	60.00	56.52	60.87
KIPKAREN	54.55	54.55	59.09	81.82	86.36	.	.	59.09	.	68.18	68.18	68.18
ITEN	.	.	.	.	.	.	.	.	65.00	65.00	75.00	85.00
BUNGOMA TOWN	54.55	40.00	59.09	.	81.82	81.82	60.00	72.73	62.50	51.27	60.00	60.87
KIMILILI	45.45	45.45	59.09	.	81.82	81.82	60.00	59.09	62.50	59.82	54.17	65.22
KAPSOKWONY	45.45	45.45	63.64	.	95.65	90.91	60.00	59.09	60.00	60.80	54.17	63.64
BUTERE	65.22	.	.	81.82	86.36	68.18	.	63.64	72.92	65.22	66.67	69.57
KAKAMEGA TOWN	54.55	72.73	68.18	86.36	75.00	.	61.90	.	75.00	64.29	70.45	75.00
MUMIAS	.	.	.	.	.	.	.	72.73	66.67	65.22	71.43	66.67
MUDETE	65.91	68.18	72.73	.	90.91	.	81.82	81.82	90.91	90.91	72.73	77.27
CHEPTULU	71.43	72.73	68.18	.	90.91	.	77.27	81.82	90.91	90.91	81.82	81.82
MBALE	68.18	68.18	72.73	.	90.91	.	81.82	86.36	90.91	90.91	90.91	100.00
KAWANGWARE	80.00	72.73	72.73	84.09	84.09	88.10	90.48	90.48	86.36	86.36	81.82	90.48
BURMA	70.00	70.00	70.00	80.00	90.00	100.00	100.00	100.00	100.00	90.00	90.00	100.00
KIKOMBA	76.19	71.11	71.11	85.71	92.86	92.86	92.86	92.86	92.86	85.71	81.82	86.36
KANGEMI	72.73	72.73	72.73	84.09	90.91	95.24	95.24	95.24	95.24	85.71	86.36	86.36
KOROGOCHO	72.73	69.57	69.57	85.71	88.10	88.10	86.36	86.36	86.36	84.09	81.82	86.36
KIBERA(TOI)	80.00	80.00	80.00	95.24	95.24	95.24	95.24	95.24	95.24	81.82	95.24	100.00
Total	62.63	65.51	70.94	79.69	83.00	84.34	79.59	79.28	80.01	78.97	76.22	75.34



TABLE 10: EXPORT OF COFFEE, TEA AND HORTICULTURAL PRODUCE

Month	COFFEE *		TEA		HORTICULTURE	
	QUANTITY	VALUE	QUANTITY	VALUE	QUANTITY	VALUE
	(MT)	(KSh. Million)	(MT)	(KSh. Million)	(MT)	(KSh. Million)
Sep-10	3,988.2	1,804.1	28,692.2	6,405.5	13,265	3,191
Oct-10	2,971.2	1,201.7	24,736.9	5,673.8	15,290	3,956
Nov-10	3,252.3	1,241.1	35,137.4	8,090.7	15,850	4,279
Dec-10	2,432.0	867.0	35,409.6	8,021.8	4,219	1,824
Jan-11	3,066.6	1,282.0	31,109.5	7,871.3	16,231	7,470
Feb-11	3,260.8	1,670.8	28,813.9	7,223.2	17,531	7,368
Mar-11	4,204.3	2,154.2	35,851.5	8,890.0	21,287	7,548
Apr-11	4,253.5	2,294.2	32,083.5	7,900.2	23,448	7,159
May-11	3,877.6	1,963.4	31,897.8	7,824.6	21,839	8,315
Jun-11	2,676.6	1,322.1	34,957.0	8,906.9	17,730	6,836
Jul-11	2,857.2	1,748.5	33,629.0	9,266.2	15,420	5,531
Aug-11	3,096.1	1,955.4	32,692.7	9,332.8	16,128	6,582
Sep-11	3,317.0	2,161.4	26,429.7	7,686.4	15,658	6,744
Oct-11	3,298.0	2,133.5	29,421.7	8,855.3	17,553	9,508
Nov-11	1,989.9	1,173.0	33,352.5	9,333.6	17,274	6,647

Source: Kenya Revenue Authority

\*Unroasted Coffee

MT denotes Metric tonnes

- data not available

**TABLE 11: MONTHLY EXPORTS OF FRESH HORTICULTURAL PRODUCTS**

Months	CUT FLOWERS				FRUITS				VEGETABLES			
	2010		2011*		2010		2011*		2010		2011*	
	QUANTITY (MT)	VALUE (KSh. Million)	QUANTITY (MT)	VALUE (KSh. Million)	QUANTITY (MT)	VALUE (KSh. Million)	QUANTITY (MT)	VALUE (KSh. Million)	QUANTITY (MT)	VALUE (KSh. Million)	QUANTITY (MT)	VALUE (KSh. Million)
January	6,415.01	2,327.30	8,607.2	4,894.3	799.94	103.47	1,330.3	191.8	4,499.26	1,004.71	6,293.5	2,384.3
February	5,397.34	2,092.53	9,516.1	5,218.4	1,393.89	124.1	2,024.6	351.0	3,497.70	702.4	5,990.4	1,798.9
March	6,827.04	2,417.19	9,608.3	4,468.3	2,517.72	211.48	4,823.8	539.3	5,115.80	1,906.27	6,854.5	2,539.9
April	5,438.13	1,709.13	11,742.1	4,462.0	2,199.18	154.74	3,973.4	436.3	4,559.72	926.96	7,732.4	2,260.2
May	6,251.39	1,968.29	10,066.7	4,940.7	1,864.98	134.03	4,298.8	412.3	5,277.25	1,089.22	7,473.9	2,961.6
June	4,912.22	1,594.41	8,405.3	3,858.3	2,296.47	221.01	2,337.4	288.1	5,177.56	1,070.73	6,987.6	2,689.2
July	4,681.90	1,610.90	7,987.9	3,482.1	2,145.60	237.16	2,197.6	308.6	4,990.95	943.2	5,234.2	1,740.2
August	5,284.00	1,787.38	7,998.3	4,297.7	1,850.68	244.83	1,919.3	308.7	5,116.29	2,339.58	6,210.3	1,975.6
September	5,829.63	2,031.79	8,103.7	4,786.8	1,474.17	182.68	965.4	157.2	5,961.33	976.23	6,588.6	1,800.4
October	7,079.42	2,575.77	9,626.1	7,203.4	1,107.45	206.66	910.1	194.5	7,103.18	1,173.64	7,016.5	2,110.4
November	7,536.31	2,919.21	9,535.3	4,382.5	1,380.32	182.82	1,036.9	168.5	6,933.87	1,177.03	6,701.5	2,095.6
December	2,078.58	1,345.28			282.81	44.27			1,857.33	434		
<b>Total</b>	<b>67,730.94</b>	<b>24,379.18</b>			<b>19,313.20</b>	<b>2,047.23</b>			<b>60,090.24</b>	<b>13,743.98</b>		

Source: Horticultural Crops Development Authority

\* Figures subject to revision

**TABLE 12: KENYA'S EXTERNAL TRADE, OCTOBER 2010 – NOVEMBER 2011**

						KSh Million
MONTH	Domestic Exports	Re-Exports	Total Exports	Total Imports	Volume of Trade	Home use Imports
<b>2010</b>						
October	29,902.42	2,350.00	32,252.42	82,681.88	114,934.30	79,658.41
November	36,091.88	3,190.26	39,282.14	102,724.91	142,007.05	99,618.23
December	38,369.82	1,856.69	40,226.51	93,411.69	133,638.20	88,640.59
<b>2011</b>						
January	33,792.47	1,665.31	35,457.78	90,527.85	125,985.63	82,636.08
February	36,560.99	2,223.41	38,784.40	85,558.42	124,342.82	79,289.58
March	41,340.64	2,534.88	43,875.51	109,732.89	153,608.40	99,418.72
April	37,536.60	1,880.60	39,417.20	86,987.95	126,405.15	81,361.41
May	38,834.83	1,939.97	40,774.79	116,829.99	157,604.78	109,217.08
June	41,373.62	2,440.64	43,814.26	104,304.80	148,119.06	102,087.69
July	40,923.81	3,742.18	44,665.99	102,898.39	147,564.38	103,310.62
August	44,038.41	2,232.16	46,270.57	136,122.68	182,393.25	113,301.34
September	43,480.28	2,777.36	46,257.64	123,700.96	169,958.60	116,955.06
October	43,246.25	2,023.02	45,269.28	115,737.69	161,006.96	113,395.45
November	42,449.61	2,079.88	44,529.49	126,316.89	170,846.38	116,783.72
Source: Kenya Revenue Authority- KRA						
- data not available						

**TABLE 13(A): MAJOR DESTINATIONS OF DOMESTIC EXPORTS, OCTOBER 2010 – NOVEMBER 2011**

	KSh Million										
Month	Uganda	Tanzania	United Kingdom	Pakistan	Netherlands	Egypt	Germany	Rwanda	USA	United Arab Emirates	France
<b>2010</b>											
October	3,950.14	2,566.42	2,942.65	1,229.00	2,401.73	1,055.45	574.92	803.35	1,704.86	1,400.19	506.18
November	4,320.85	3,200.09	3,887.48	1,991.44	2,691.95	1,442.68	620.36	786.91	1,694.03	1,428.68	530.24
December	4,527.42	2,524.66	3,596.42	1,989.41	2,757.09	1,585.90	634.45	884.69	4,290.96	1,266.71	548.05
<b>2011</b>											
January	5,225.34	2,343.90	4,031.48	1,996.92	2,438.71	967.14	644.13	876.63	1,388.05	1,527.21	406.12
February	4,565.78	3,052.92	3,678.11	1,711.78	3,009.62	1,403.62	742.25	882.56	1,547.86	1,694.95	492.76
March	5,392.91	3,293.00	3,670.43	1,785.28	3,168.95	1,767.06	661.28	1,071.33	1,801.84	1,382.31	578.80
April	5,684.14	2,628.64	3,672.69	1,210.72	2,810.57	2,293.90	528.46	989.04	2,089.28	1,339.36	550.38
May	5,760.88	3,007.68	3,695.57	1,166.27	2,720.33	1,476.82	739.76	959.14	2,190.10	1,384.24	514.44
June	6,073.68	3,098.24	3,850.41	1,723.65	2,947.42	2,481.83	496.53	1,133.93	2,644.56	1,291.23	465.89
July	5,532.70	3,949.36	3,578.60	1,946.82	2,308.58	2,659.01	507.46	1,002.39	2,398.05	1,505.06	386.78
August	6,195.68	3,675.38	4,078.98	2,024.74	2,114.09	1,535.48	679.96	1,113.70	3,356.05	1,157.63	516.73
September	5,954.35	4,263.52	3,680.70	1,451.88	3,179.69	1,477.43	810.73	1,196.43	2,444.24	1,607.27	556.82
October	4,793.67	3,559.28	4,506.21	1,882.31	2,859.68	1,861.34	806.31	1,147.16	2,135.99	1,289.76	509.25
November	5,896.83	3,487.19	4,597.53	1,874.69	2,898.72	2,158.40	548.32	1,118.80	1,884.81	1,411.92	365.11

Source: Kenya Revenue Authority- KRA

TABLE 13 (B): DOMESTIC EXPORTS BY BROAD ECONOMIC CATEGORY

KSh Million														
Value (KSh Million)	2010			2011										
	Nov	Dec	Total	Jan	Feb	Mar	Apr	May	June	July	Aug	Sep	Oct	Nov
FOOD AND BEVERAGES .. .. .	15,942.10	15,237.80	170,156.80	14,831.60	14,549.60	17,155.40	16,427.30	15,787.00	15,428.40	16,482.10	17,573.35	16,459.0	18,445.5	17,626
INDUSTRIAL SUPPLIES (Non-Food) ..	9,590.00	12,883.40	104,310.60	9,756.40	11,497.70	12,303.30	9,905.10	11,144.30	12,457.00	12,174.40	12,008.75	14,497.1	12,504.0	11,826
FUEL AND LUBRICANTS .. .. .	256.9	400.3	4,969.10	1,022.60	701.1	965.6	812.8	709.6	818.8	590.9	960.28	392.6	217.7	513
MACHINERY & OTHER CAPITAL EQUIPMENT ..	1,047.40	1,049.40	9,010.90	561.5	952.8	720.9	831.2	1,062.00	789.1	854.1	1,670.50	1,248.0	793.2	870
TRANSPORT EQUIPMENT .. ..	873.2	443.4	6,516.80	292.1	524.6	476.6	521.7	699.2	628	643.5	926.73	734.0	859.1	472
..														
CONSUMER GOODS NOT ELSEWHERE SPECIFIED ..	8,381.70	8,354.10	85,742.00	7,328.10	8,327.40	9,699.20	9,032.40	9,430.80	9,855.00	10,175.60	10,899.32	10,129.0	10,425.7	11,139
GOODS NOT ELSEWHERE SPECIFIED ..	0.6	1.4	2,593.20	0.2	7.7	19.6	6.1	1.9	1,397.70	3.3	1.48	20.3	1.1	5
TOTAL .. .. .	36,092	38,370	383,299	33,792	36,561	41,341	37,537	38,835	41,374	40,924	44,038	43,480	43,246	42,450
PERCENTAGE SHARES:														
Food and Beverages .. .. .	44.17	39.71	44.39	43.89	39.8	41.5	43.76	40.65	37.29	40.27	39.90	37.85	42.65	41.52
Industrial Supplies (Non-Food) ..	26.57	33.58	27.21	28.87	31.45	29.76	26.39	28.7	30.11	29.75	27.27	33.34	28.91	27.86
.. ..														
Fuel and Lubricants .. .. .	0.71	1.04	1.3	3.03	1.92	2.34	2.17	1.83	1.98	1.44	2.18	0.90	0.50	1.21
Machinery and other Capital Equipment ..	2.9	2.74	2.35	1.66	2.61	1.74	2.21	2.73	1.91	2.09	3.79	2.87	1.83	2.05
Transport Equipment .. .. .	2.42	1.16	1.7	0.86	1.43	1.15	1.39	1.8	1.52	1.57	2.10	1.69	1.99	1.11
Consumer Goods not elsewhere specified	23.22	21.77	22.37	21.69	22.78	23.46	24.06	24.28	23.82	24.86	24.75	23.30	24.11	26.24
Goods not elsewhere specified ..	0	0	0.68	0	0.02	0.05	0.02	0	3.38	0.01	0.00	0.05	0.00	0.01
.. ..														
TOTAL .. .. .	100	100	100	100	100	100	100	100	100	100	100	100	100.00	100

TABLE 14(A): MAJOR ORIGINS OF IMPORTS, SEPTEMBER 2010 – NOVEMBER 2011

	KSh Million										
Month	United Arab Emirates	United Kingdom	South Africa	Saudi Arabia	Japan	India	USA	Germany	Netherlands	France	China
2010											
September	11,044.59	2,514.04	5,411.92	857.62	4,726.15	7,440.26	4,077.47	2,501.10	1,576.02	1,692.38	14,954.57
October	12,440.58	2,362.83	4,832.04	2,256.05	3,809.49	10,337.44	2,707.74	2,229.12	1,363.67	1,585.17	14,483.43
November	7,397.52	5,846.90	5,010.04	5,499.41	4,995.84	8,556.84	2,967.06	2,124.08	2,224.60	2,369.24	12,870.69
December	7,591.95	3,555.66	6,627.34	1,943.07	10,441.75	11,809.63	6,159.34	2,163.05	969.09	2,666.82	10,667.04
2011											
January	12,596.22	2,268.53	5,353.18	1,842.78	2,984.88	14,665.43	2,409.89	1,892.75	2,290.71	1,609.90	8,513.25
February	12,083.12	2,378.80	5,015.88	1,031.82	3,913.90	11,783.15	2,335.98	2,173.81	1,417.61	1,474.63	8,735.35
March	18,716.06	3,141.35	7,883.36	1,888.81	4,363.15	11,815.46	5,670.39	2,451.56	1,081.66	1,527.14	10,810.41
April	13,198.01	3,055.40	6,095.53	1,748.27	3,643.59	11,903.54	2,253.71	2,250.77	2,279.30	1,375.80	8,522.11
May	18,033.74	4,901.07	5,179.02	3,183.35	5,412.84	15,159.85	3,189.99	2,726.29	2,112.16	1,279.61	15,476.49
June	18,393.00	3,144.19	5,071.06	6,155.93	4,308.39	11,158.79	3,050.77	3,111.62	1,864.70	1,496.51	11,720.73
July	12,465.87	3,540.60	6,942.86	1,853.36	4,794.40	10,152.17	4,364.95	3,321.57	1,403.32	1,520.49	11,283.00
August	21,191.17	4,730.88	5,518.23	3,891.07	8,628.43	11,047.59	3,425.46	2,758.32	3,374.41	1,929.90	12,236.69
September	12,484.30	5,055.34	6,085.63	2,578.14	4,455.66	17,491.15	5,044.89	2,733.35	1,794.26	1,937.59	18,057.36
October	19,548.76	3,784.73	6,011.22	9,280.96	4,848.40	10,174.24	3,979.00	2,502.81	1,660.79	1,916.71	13,500.41
November	19,170.14	3,199.63	6,708.01	12,336.16	5,375.63	12,027.74	4,597.89	3,391.21	1,536.12	1,844.73	14,120.66

Source: Kenya Revenue Authority- KRA

**TABLE 14 (B): IMPORTS BY BROAD ECONOMIC CATEGORY**

KSh Million														
Value (KSh Million)	2010			2011										
	Nov	Dec	Total	Jan	Feb	Mar	Apr	May	June	July	Aug	Sep	Oct	Nov
FOOD AND BEVERAGES .. .. .	6,639.30	5,702.70	70,771.40	6,000.00	4,762.90	7,129.80	4,998.70	5,598.80	7,355.00	9,994.60	11,741	13,428.20	11,408.35	8,095
INDUSTRIAL SUPPLIES (Non-Food) ..	29,618.60	28,414.10	298,939.00	30,020.90	31,054.00	35,612.70	27,985.20	33,055.50	35,038.00	35,494.30	40,571	35,958.20	32,361.38	35,616
FUEL AND LUBRICANTS .. .. .	17,115.60	21,738.60	207,934.80	26,781.00	23,127.30	30,173.40	23,193.70	34,727.50	28,368.00	22,221.00	41,869	28,039.50	30,515.60	34,061
MACHINERY & OTHER CAPITAL EQUIPMENT ..	19,647.10	17,397.20	177,137.10	14,299.20	13,689.60	17,646.80	16,088.60	20,959.70	15,016.00	15,200.60	17,848	22,680.20	19,130.88	21,408
TRANSPORT EQUIPMENT .. ..	22,307.90	12,696.30	130,872.80	6,690.70	6,077.00	11,858.60	7,493.90	13,538.00	9,251.00	11,089.50	15,033	16,317.70	13,860.32	9,854
..														
CONSUMER GOODS NOT ELSEWHERE SPECIFIED ..	7,141.20	7,437.70	72,247.50	6,639.70	6,617.50	7,075.50	6,372.80	7,935.30	8,857.00	7,775.10	8,760	7,063.30	8,209.64	11,702
GOODS NOT ELSEWHERE SPECIFIED ..	255.2	25.1	1,528.80	96.4	230	236.2	855	1,015.20	420	1,123.30	300	213.9	251.51	5,581
<b>TOTAL .. .. .</b>	<b>102,724.90</b>	<b>93,411.70</b>	<b>959,431.50</b>	<b>90,527.80</b>	<b>85,558.40</b>	<b>109,732.90</b>	<b>86,987.90</b>	<b>116,830.00</b>	<b>104,305.00</b>	<b>102,898.40</b>	<b>136,123.70</b>	<b>123,701.00</b>	<b>115,737.69</b>	<b>126,316.9</b>
<b>PERCENTAGE SHARES:</b>														
Food and Beverages .. .. .	6.46	6.1	7.38	6.63	5.57	6.5	5.75	4.79	7.05	9.71	8.63	10.86	9.86	6.41
Industrial Supplies (Non-Food) ..	28.83	30.42	31.16	33.16	36.3	32.45	32.17	28.29	33.59	34.49	29.8	29.07	27.96	28.20
.. ..														
Fuel and Lubricants .. .. .	16.66	23.27	21.67	29.58	27.03	27.5	26.66	29.72	27.2	21.6	30.76	22.67	26.37	26.97
Machinery and other Capital Equipment ..	19.13	18.62	18.46	15.8	16	16.08	18.5	17.94	14.4	14.77	13.11	18.33	16.53	16.95
Transport Equipment .. .. .	21.72	13.59	13.64	7.39	7.1	10.81	8.61	11.59	8.87	10.78	11.04	13.19	11.98	7.80
Consumer Goods not elsewhere specified	6.95	7.96	7.53	7.33	7.73	6.45	7.33	6.79	8.49	7.56	6.44	5.71	7.09	9.26
Goods not elsewhere specified ..	0.25	0.03	0.16	0.11	0.27	0.22	0.98	0.87	0.4	1.09	0.22	0.17	0.22	4.42
.. ..														
<b>TOTAL .. .. .</b>	<b>100</b>	<b>100</b>	<b>100</b>	<b>100</b>	<b>100</b>	<b>100</b>	<b>100</b>	<b>100</b>	<b>100</b>	<b>100</b>	<b>100</b>	<b>100</b>	<b>100</b>	<b>100.0</b>

TABLE 15(A): LOCAL ELECTRICITY GENERATION BY SOURCE

Million KWh				
MONTH	HYDRO	GEO - THERMAL	THERMAL	TOTAL
Nov-10	296.72	119.61	163.77	580.09
Dec-10	306.58	125.35	155.07	587.00
Jan-11	296.20	119.15	187.91	603.26
Feb-11	245.51	104.99	200.13	550.63
Mar-11	259.11	126.29	224.85	610.25
Apr-11	236.92	120.35	224.38	581.66
May-11	264.29	123.77	221.79	609.85
Jun-11	268.23	117.72	200.34	586.29
Jul-11	262.63	122.41	225.77	610.81
Aug-11	253.87	125.23	234.48	613.57
Sep-11	249.07	121.21	224.28	594.57
Oct-11	253.24	122.15	225.32	600.71
Nov-11	263.04	115.04	255.26	633.34
Dec-11	331.37	125.38	175.43	632.18

Source: Kenya Power

FIG 10: ELECTRICITY GENERATION BY SOURCE

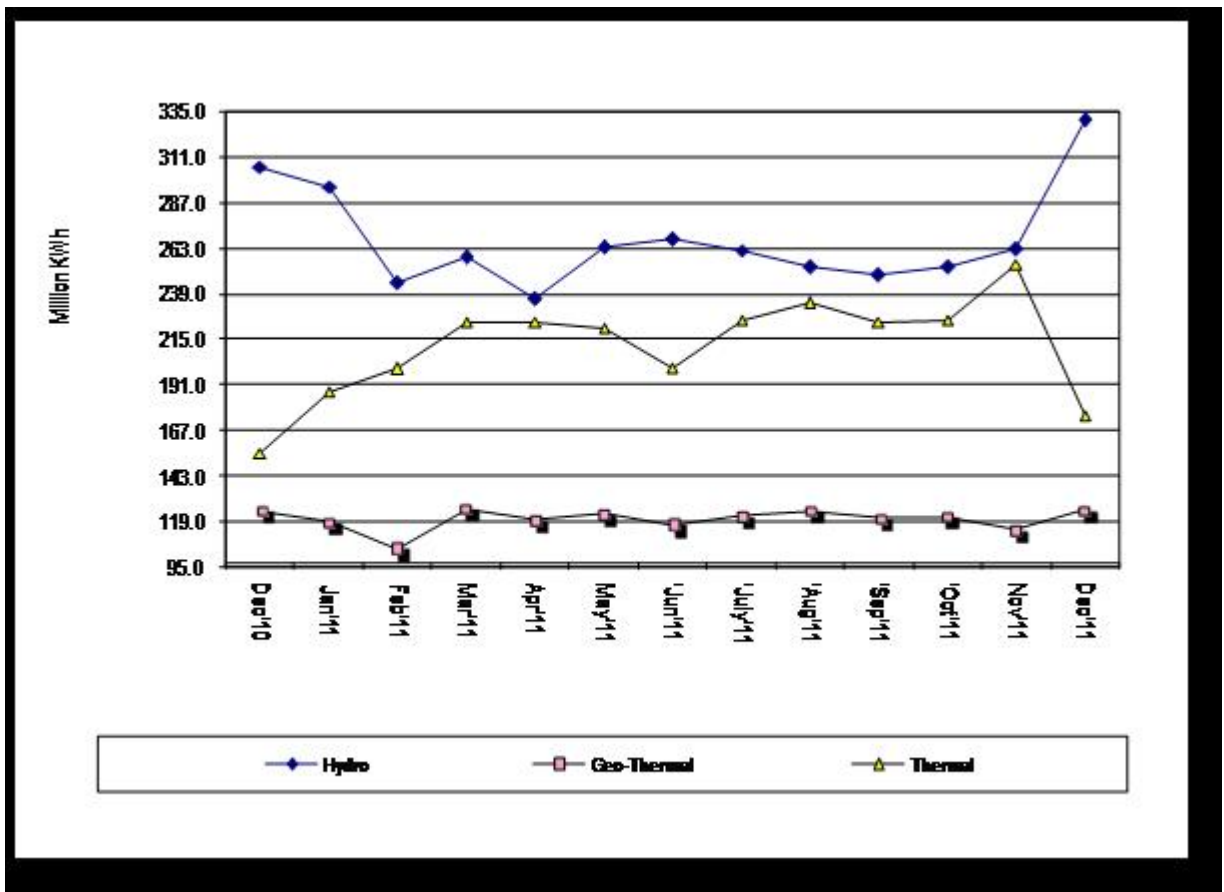


TABLE 15(B): GENERATION AND CONSUMPTION OF ELECTRICITY

Month	Million KWh										
	GENERATION					CONSUMPTION*					
	LOCAL GENERATION	IMPORTS		EPPS (Aggreko)	TOTAL GENERATION	TOTAL KPLC SALES	RURAL ELECTRIFICATION	EXPORTS TO UGANDA	TOTAL DOMESTIC CONSUMPTION	POWER LOSSES	
	UGANDA	TANZANIA	Total Imports								
2010											
November	580.1	2.70	0.07	2.8	23.43	606.3	490.8	25.0	2.7	515.8	-87.8
December	587.0	2.20	0.07	2.3	14.17	603.4	489.4	23.9	2.2	513.3	-87.9
2011											
January	603.3	2.09	0.08	2.2	19.82	625.2	497.5	27.2	2.1	524.8	-98.4
February	550.6	2.46	0.07	2.5	25.36	578.5	491.9	25.7	2.5	517.6	-58.4
March	610.3	3.16	0.07	3.2	24.81	638.3	456.9	25.3	3.2	482.2	-152.9
April	581.7	2.36	0.07	2.4	29.65	613.7	493.2	26.0	2.4	519.2	-92.2
May	609.9	2.10	0.07	2.2	26.45	638.5	483.6	25.3	2.1	508.9	-127.5
June	586.3	2.92	0.07	3.0	27.30	616.6	526.0	29.6	2.9	555.6	-58.1
July	610.8	2.65	0.07	2.7	32.67	646.2	428.4	26.5	4.1	454.9	-187.2
August	613.6	3.09	0.10	3.2	29.89	646.7	476.6	27.0	3.3	503.6	-139.7
September	594.6	2.55	0.09	2.6	34.02	631.2	482.5	28.6	3.2	511.1	-116.8
October	600.71	3.11	0.09	3.2	45.84	649.8	481.0	28.2	3.2	509.2	-137.4
November	633.3	2.98	0.08	3.06	44.94	681.3	516.3	28.0	3.6	544.3	-133.5
December	632.2	2.71	0.09	2.8	17.94	652.9	493.4	26.9	3.7	520.3	-129.0

NB: Difference between total generation and consumption,  
 - Data not available  
 \* Provisional

FIG 11: ELECTRICITY GENERATION, CONSUMPTION AND POWER LOSSES

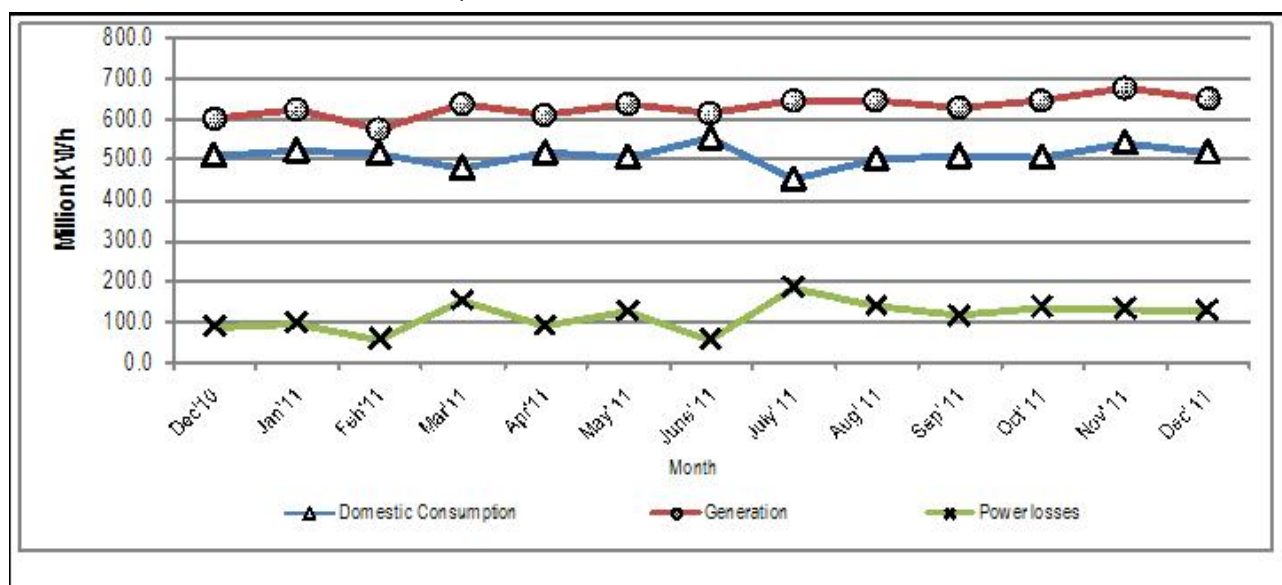


TABLE 15 (C): CONSUMPTION OF PETROLEUM FUELS

'000 MT

PERIOD	LIGHT DIESEL OIL	JET FUEL	FUEL OILS	MOTOR SPIRIT	ILLUMINATING KEROSENE	HEAVY DIESEL OIL	L.P.G.	AVIATION GASOLENE	TOTAL FUELS
2010									
September	107.7	46.6	43.2	41.9	21.9	2.1	5.6	0.08	269.2
October	104.6	50.0	51.8	42.1	22.8	1.9	4.8	0.15	278.1
November	99.6	50.4	42.2	42.8	21.3	2.5	4.2	0.14	263.1
December	114.8	53.8	50.3	53.3	20.7	2.1	4.0	0.17	299.1
2011									
January	107.06	57.16	48.12	42.35	21.26	2.32	5.38	0.19	283.85
February	107.39	52.42	47.40	42.37	18.98	2.67	4.06	0.17	275.45
March	121.37	72.46	61.66	47.95	23.62	2.51	5.84	0.05	335.45
April	106.16	50.78	53.96	43.88	23.93	2.08	5.34	0.13	286.27
May	107.67	51.95	61.50	46.29	20.68	2.15	5.47	0.14	295.86
June	106.51	46.30	47.20	43.99	20.91	1.94	5.35	0.21	272.40
July	123.20	57.66	45.21	45.78	20.34	2.58	5.34	0.17	300.28
August	125.81	60.06	48.82	48.15	24.64	2.00	6.43	0.09	316.00
September	121.31	59.50	51.00	48.95	24.54	2.29	4.90	0.29	312.77
October	127.70	55.69	44.30	46.49	22.52	1.95	4.87	0.17	303.70
November	128.38	53.23	43.67	46.96	21.42	2.13	3.45	0.14	299.38
December	120.87	41.03	40.55	52.63	25.32	1.83	5.10	0.29	287.62

Source : Ministry of Energy

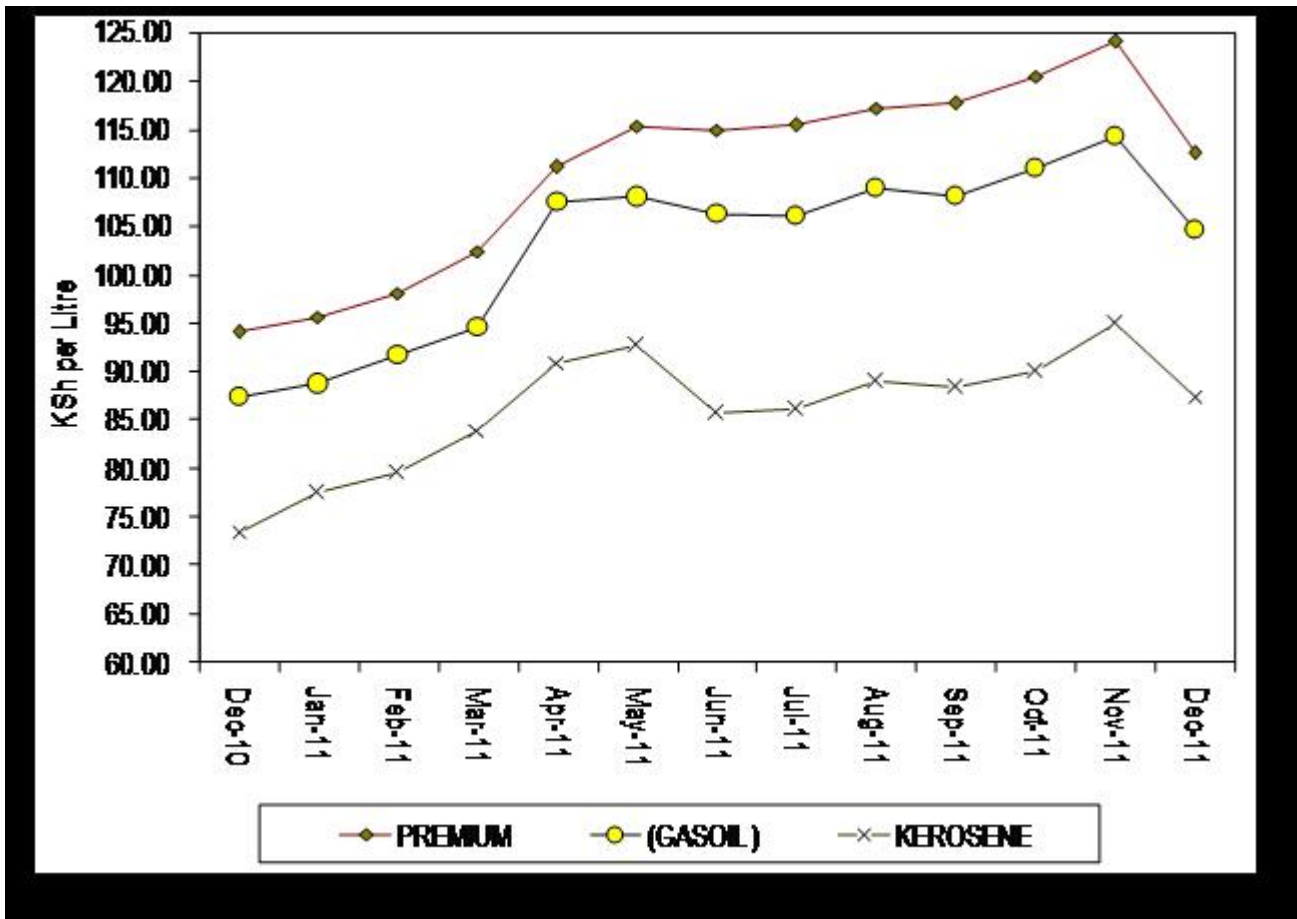
MT: Means Metric Tonnes

TABLE 15 (D): AVERAGE RETAIL PRICES FOR SELECTED FUEL PRODUCTS WITHIN NAIROBI

PERIOD	KSh per litre		
	MOTOR GASOLINE PREMIUM	LIGHT DIESEL OIL (GASOIL)	ILLUMINATING KEROSENE
Dec-10	94.05	87.41	73.49
Jan-11	95.67	88.71	77.51
Feb-11	98.08	91.72	79.52
Mar-11	102.44	94.53	83.97
Apr-11	111.17	107.52	90.91
May-11	115.35	108.02	92.61
Jun-11	114.93	106.30	85.71
Jul-11	115.39	106.12	86.16
Aug-11	117.22	108.97	88.96
Sep-11	117.75	108.17	88.29
Oct-11	120.50	110.94	89.95
Nov-11	124.13	114.3	94.87
Dec-11	112.64	104.69	87.43

Source : Kenya National Bureau of Statistics

FIG 12(A): AVERAGE RETAIL PRICES OF SELECTED PETROLEUM PRODUCTS



**TABLE 15 (E): AVERAGE RETAIL PRICES FOR SELECTED FUELS IN KENYA**

PERIOD	MOTOR GASOLINE PREMIUM (KSh Per Litre)	LIGHT DIESEL OIL, GASOIL (KSh per Litre)	ILLUMINATING KEROSENE (KSh per Litre)	L.P.G (KSh per 13Kg)	Charcoal (KSh per 4 Kg Tin)
Dec-10	95.65	87.10	74.12	2,191.00	44.30
Jan-11	95.37	89.47	78.45	2,326.65	44.52
Feb-11	98.97	92.47	80.47	2,303.01	44.93
Mar-11	103.32	95.27	84.92	2,308.56	45.50
Apr-11	112.10	108.29	91.91	2,345.41	46.92
May-11	116.31	108.98	93.57	2,342.73	48.71
Jun-11	115.87	107.26	86.66	2,328.67	49.12
Jul-11	116.34	107.08	87.11	2,360.42	49.99
Aug-11	118.03	109.81	89.81	2,372.35	50.43
Sep-11	118.42	109.01	89.14	2,451.66	51.72
Oct-11	121.30	111.77	90.79	2,599.56	51.54
Nov-11	124.85	115.13	95.71	2,781.73	53.77
Dec-11	113.39	105.53	88.34	2,510.55	49.42

Source : Kenya National Bureau of Statistics

**FIG 12(B): AVERAGE PRICES FOR LPG IN KENYA**

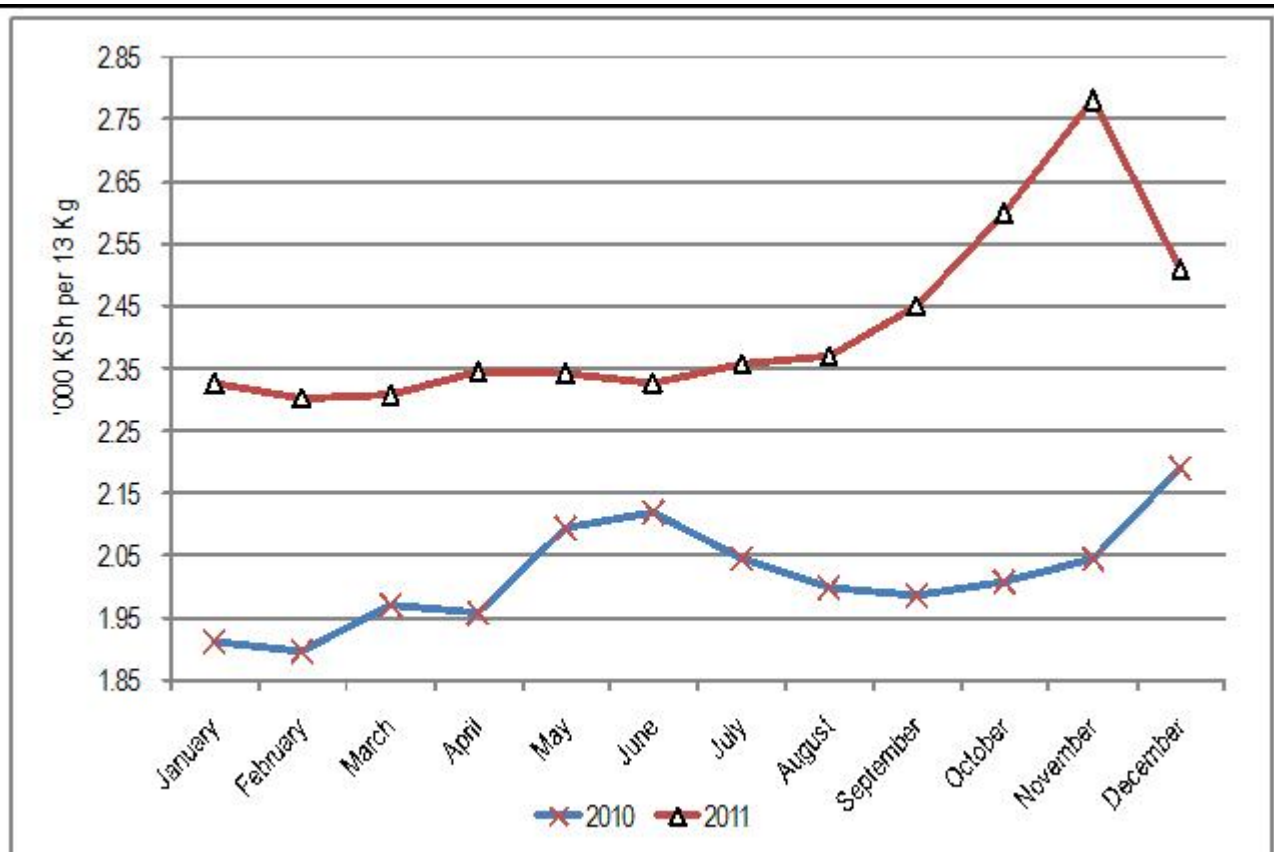
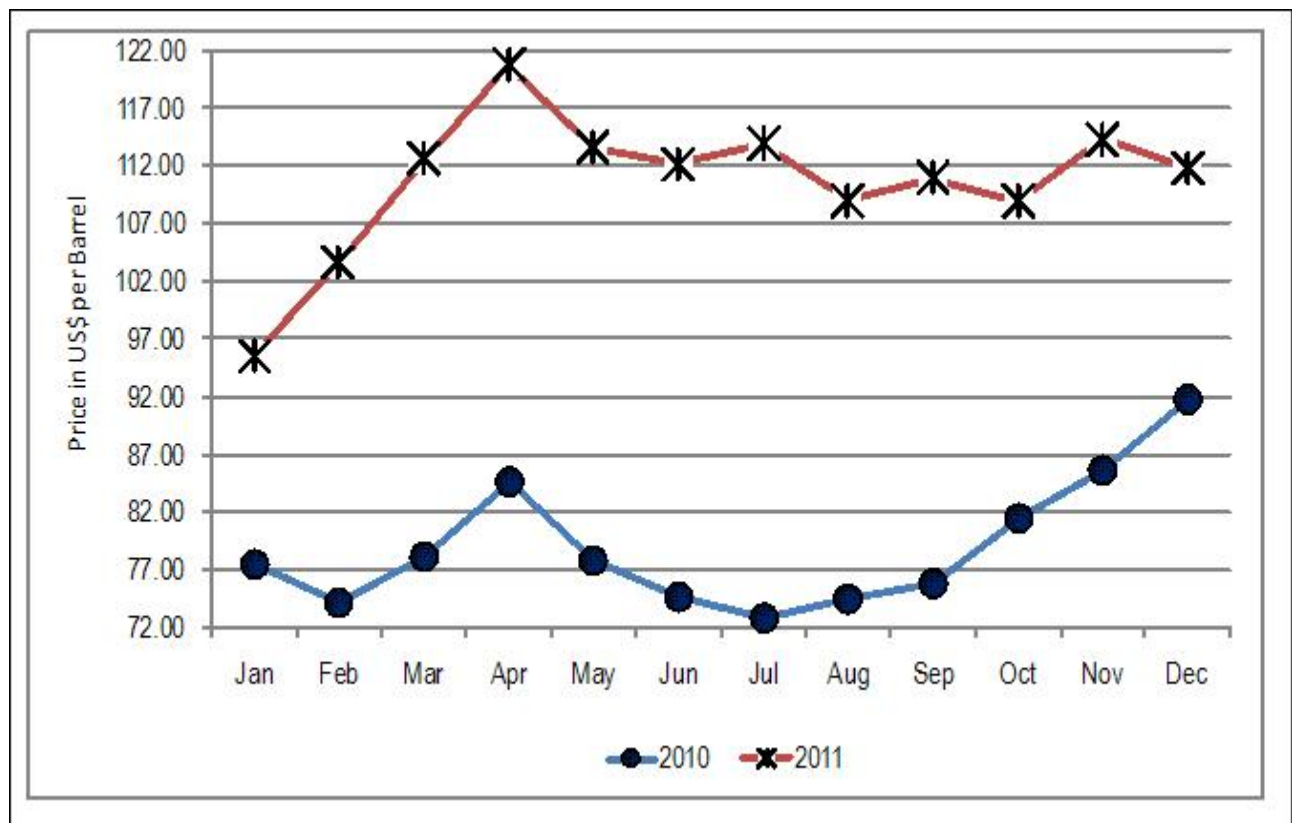


TABLE 15(F): MURBAN ADNOC PRICES 2006-2011

	US\$/BBL					
Month/Year	2006	2007	2008	2009	2010	2011
January	62.15	54.85	92.25	48.85	77.5	95.55
February	60.95	58.75	95.1	44.95	74.2	103.6
March	60.85	62.1	102.2	47.55	78.3	112.55
April	67.5	67.6	109.35	45.85	84.8	120.7
May	68.5	68.4	125.75	60.15	77.85	113.6
June	68.85	69.7	134	71.65	74.8	112.15
July	73	73.7	137.35	66.95	73	113.95
August	72.7	71.75	117.5	72.75	74.6	109.05
September	63.25	78.55	98.05	69.1	75.9	110.90
October	59.35	81.8	69.25	69.25	81.5	108.95
November	59.7	91.75	51.4	78.6	85.65	114.35
December	62.05	90.6	42.1	76.1	91.85	111.80

Source : Ministry of Energy  
 ADNOC : Abu Dhabi National Oil Corporation  
 PRICE : Abu Dhabi Free On Board (FOB)  
 US\$/ BBL: US Dollar per Barrel

FIG 13: TRENDS FOR MURBAN ADNOC CRUDE OIL PRICES



**TABLE 16: VALUE OF BUILDING PLANS APPROVED BY NAIROBI CITY COUNCIL (NCC)**

KSh Million						
MONTHS	ACTUAL			REAL**		
	RESIDENTIAL	NON RESIDENTIAL	AGGREGATE ACTUAL	RESIDENTIAL	NON RESIDENTIAL	REAL AGGREGATE
2010						
September	4,047.2	6,408.4	10,455.5	69.6	104.8	174.4
October	7,155.5	8,051.1	15,206.6	123.0	131.7	254.7
November	5,825.7	5,831.4	11,657.1	99.8	96.8	196.7
December	7,616.0	5,847.4	13,463.5	130.1	95.0	224.6
2011						
January	5,345.9	6,553.5	11,899.4	91.3	106.5	198.5
February	5,378.0	4,889.5	10,267.5	91.9	79.4	171.3
March	9,053.8	4,423.3	13,477.0	154.6	71.9	224.8
April	15,053.8	4,423.3	19,477.0	257.1	71.9	324.9
May	15,653.8	4,023.3	19,677.1	267.4	65.4	328.3
June	15,853.8	4,360.0	20,213.8	270.8	70.8	337.2
July	16,053.8	4,623.4	20,677.2	274.2	75.1	344.9
August	14,953.2	5,146.6	20,099.8	255.4	83.6	335.3
September	15,786.3	4,850.5	20,636.7	269.6	78.8	344.3
October	14,206.7	4,789	18,995.7	242.7	77.8	316.9
November	13,804.5	4,397.1	18,201.5	235.8	71.4	303.6
December	12,497	5,186.7	17,684.5	213.5	84.3	295.0

Source: Nairobi City Council

\*\* Actual deflated by relevant construction cost indices ( Dec1972 =100)

**TABLE 17(A): DOMESTIC PRODUCTION OF SUGAR**

	Metric Tonnes						
Month	2005	2006	2007	2,008	2009	2010	2011*
January	48,993	47,596	42,188	38,986	53,968	48,100	55,974
February	41,929	44,823	41,246	49,772	46,115	42,982	52,069
March	40,192	51,327	45,933	40,753	53,687	45,388	53,842
April	42,988	41,055	47,255	38,968	46,164	43,801	52,061
May	40,869	39,849	45,427	50,865	46,002	34,465	49,130
June	29,076	34,985	36,870	49,300	47,410	37,828	38,818
July	27,995	30,985	37,496	40,805	33,078	33,495	25,884
August	41,585	47,002	44,898	21,130	36,827	41,911	26,060
September	39,003	35,173	44,396	40,567	42,586	45,595	22,815
October	45,810	35,102	48,849	47,244	43,750	43,669	28,990
November	42,493	34,265	44,155	46,239	50,115	50,822	32,689
December	48,069	33,509	41,691	47,262	48,297	55,414	
<b>Total</b>	<b>489,002</b>	<b>475,671</b>	<b>520,404</b>	<b>511,891</b>	<b>547,999</b>	<b>523,470</b>	

Source: Kenya Sugar Authority

\*Provisional

**TABLE 17(B): PRODUCTION OF SOFT DRINKS**

Month	2005	2006	2007	2008	2009	2010	2011*
January	22,025	32,548	28,835	26,199	31,153	29,405	34,446
February	22,895	26,470	27,484	24,352	26,891	31,178	32,457
March	27,395	27,538	31,120	31,961	34,847	33,984	35,850
April	18,196	19,542	26,411	23,810	32,585	29,352	31,922
May	17,308	20,406	26,148	25,419	26,934	29,445	26,622
June	18,513	22,682	22,852	22,727	28,314	29,588	28,910
July	19,044	17,568	20,508	21,670	25,279	29,332	28,360
August	15,367	20,095	21,402	23,766	26,829	28,525	28,490
September	19,950	20,127	25,899	29,530	31,594	29,593	29,127
October	21,965	23,774	40,067	26,953	29,922	30,435	30,452
November	26,881	20,689	27,177	31,923	29,664	29,333	30,593
December	27,485	27,968	30,329	53,226	37,261	31,163	
<b>Total</b>	<b>257,024</b>	<b>279,407</b>	<b>328,231</b>	<b>341,536</b>	<b>361,273</b>	<b>361,333</b>	

Source : Kenya National Bureau of Statistics

\*Provisional

**TABLE 17(C): PRODUCTION OF ASSEMBLED VEHICLES**

Month	Numbers				
	2007	2008	2009	2010	2011*
January	450	468	379	299	290
February	516	592	556	521	413
March	565	388	517	510	462
April	532	601	494	438	438
May	574	575	341	521	554
June	481	487	326	550	550
July	456	468	482	509	524
August	589	440	388	460	538
September	566	488	373	461	725
October	718	503	391	460	682
November	658	435	464	490	
December	437	302	349	502	
<b>Total</b>	<b>6,542</b>	<b>5,747</b>	<b>5,060</b>	<b>5,721</b>	
*Provisional					

**TABLE 17(D): PRODUCTION OF GALVANISED SHEETS**

Month	Metric Tonnes				
	2007	2008	2009	2010*	2011*
January	13,515	16,240	16,031	14,254	21,300
February	15,365	16,912	12,003	13,700	22,497
March	16,920	15,498	13,104	20,095	23,024
April	15,855	15,396	14,376	18,929	21,403
May	14,816	15,741	16,046	18,842	23,700
June	16,404	15,528	16,225	16,006	24,687
July	15,674	16,935	17,497	16,790	24,543
August	15,921	17,166	17,253	16,457	23,874
September	15,877	17,255	16,855	16,299	23,076
October	16,611	15,755	14,989	18,488	
November	15,372	12,418	14,813	16,219	
December	15,930	14,477	12,960	15,331	
<b>Total</b>	<b>188,260</b>	<b>189,321</b>	<b>182,151</b>	<b>201,410</b>	

Source : Kenya National Bureau of Statistics

\*Provisional

TABLE 17(E): CEMENT PRODUCTION AND CONSUMPTION

MONTHS	Metric Tonnes					
	2009		2010		2011*	
	PRODUCTION	CONSUMPTION	PRODUCTION	CONSUMPTION	PRODUCTION	CONSUMPTION
January	247,984	200,840	290,805	264,849	332,632	327,072
February	246,746	199,701	266,889	178,789	302,747	250,796
March	270,242	191,989	300,610	223,450	323,358	259,405
April	256,389	202,344	284,987	258,016	330,535	275,238
May	280,891	236,665	294,158	250,837	343,746	284,373
June	282,016	233,402	312,176	274,073	332,994	273,717
July	288,490	225,000	334,444	273,581	360,923	301,877
August	289,705	233,753	323,478	284,184	348,639	297,913
September	257,780	230,493	319,464	253,692	352,099	275,984
October	301,584	242,016	351,963	309,066	320,962	300,298
November	305,686	240,329	323,447	281,564	327,343	290,413
December	292,769	234,646	307,385	252,726	325,408	-
TOTAL	3,320,282	2,671,178	3,709,807	3,104,827	4,001,386	-

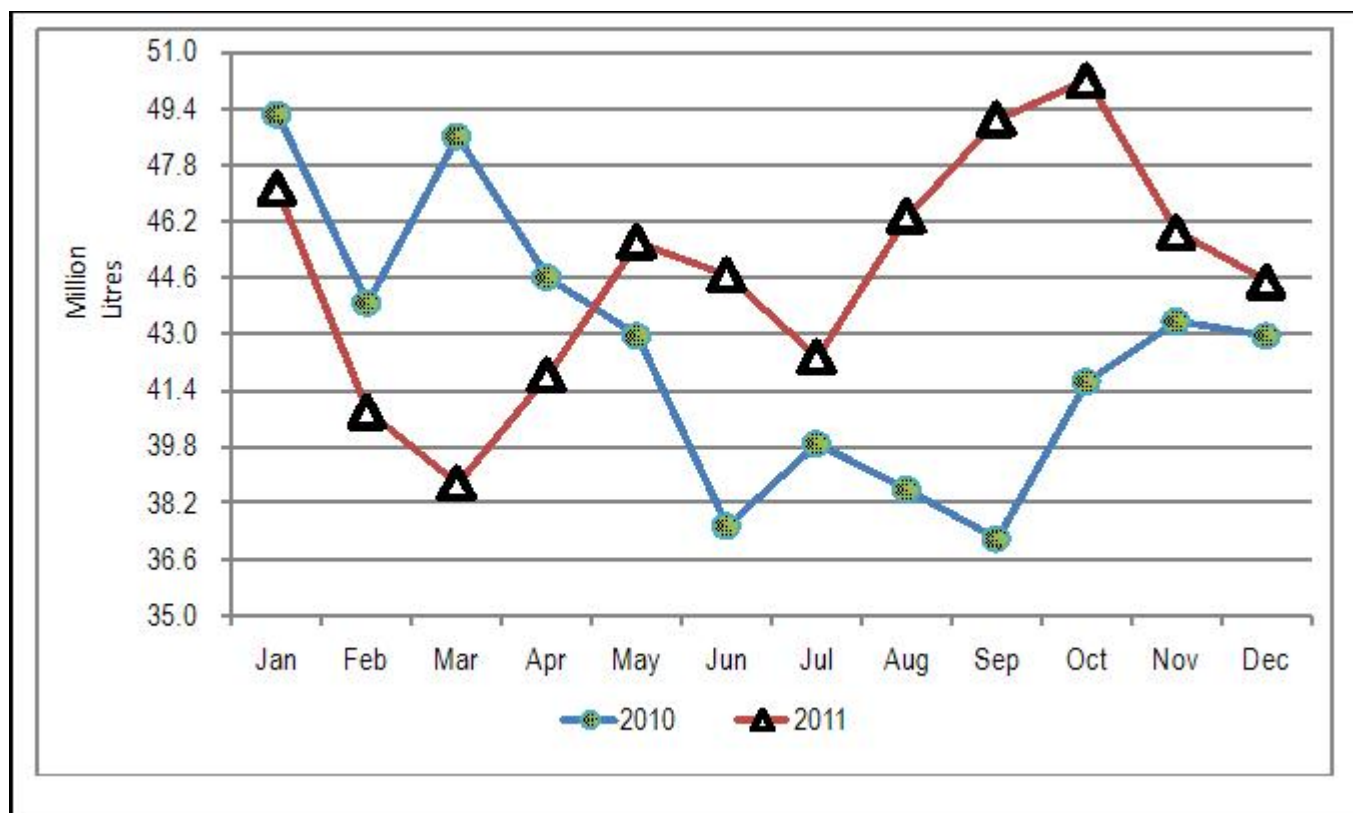
Source: Kenya National Bureau of Statistics  
 - data not available  
 \*Provisional

TABLE 17(F): MILK INTAKES IN THE FORMAL MILK SECTOR

Month	Million Litres			
	2008	2009	2010	2011*
January	28.6	35.82	49.27	47.13
February	26.53	29.47	43.9	40.8
March	26.89	26.43	48.61	38.77
April	28.62	24.35	44.64	41.82
May	35.02	29.16	42.99	45.61
June	34.72	33.36	37.58	45.68
July	32.84	33.88	39.91	44.67
August	33.64	35.01	38.63	46.35
September	35.54	34.24	37.22	49.09
October	35.53	38.01	41.68	50.21
November	39.36	41.88	43.37	45.90
December	41.24	44.93	43	44.50
Total	398.5	406.5	510.8	540.53

Source: Kenya Dairy Board  
 \* Provisional

FIG 14: MILK INTAKE IN THE FORMAL SECTOR



**TABLE 18: VISITOR ARRIVALS\* THROUGH JOMO KENYATTA INTERNATIONAL AIRPORT (J.K.I.A) AND MOI INTERNATIONAL AIRPORT (M.I.A)**

MONTH	AIRPORT			Numbers
	JKIA	MIA	Total	
Nov-10	66,900	23,772	90,672	
Dec-10	79,568	29,346	108,914	
Jan-11	79,142	35,770	114,912	
Feb-11	69,221	31,211	100,432	
Mar-11	71,734	26,027	97,761	
Apr-11	66,276	10,181	76,457	
May-11	74,148	5,167	79,315	
Jun-11	72,944	6,676	79,620	
July-11	131,519	12,037	143,556	
Aug-11	113,438	23,402	136,840	
Sep-11	85,397	17,317	102,714	
October	88,918	18,741	107,659	
November	89,394	19,641	109,035	
December	94,355	21,624	115,979	

Source: Kenya Tourism Board  
 \* Visitors arrivals exclude Kenyans

**FIG 15: VISITORS ARRIVING IN KENYA THROUGH THE MAIN AIRPORTS**

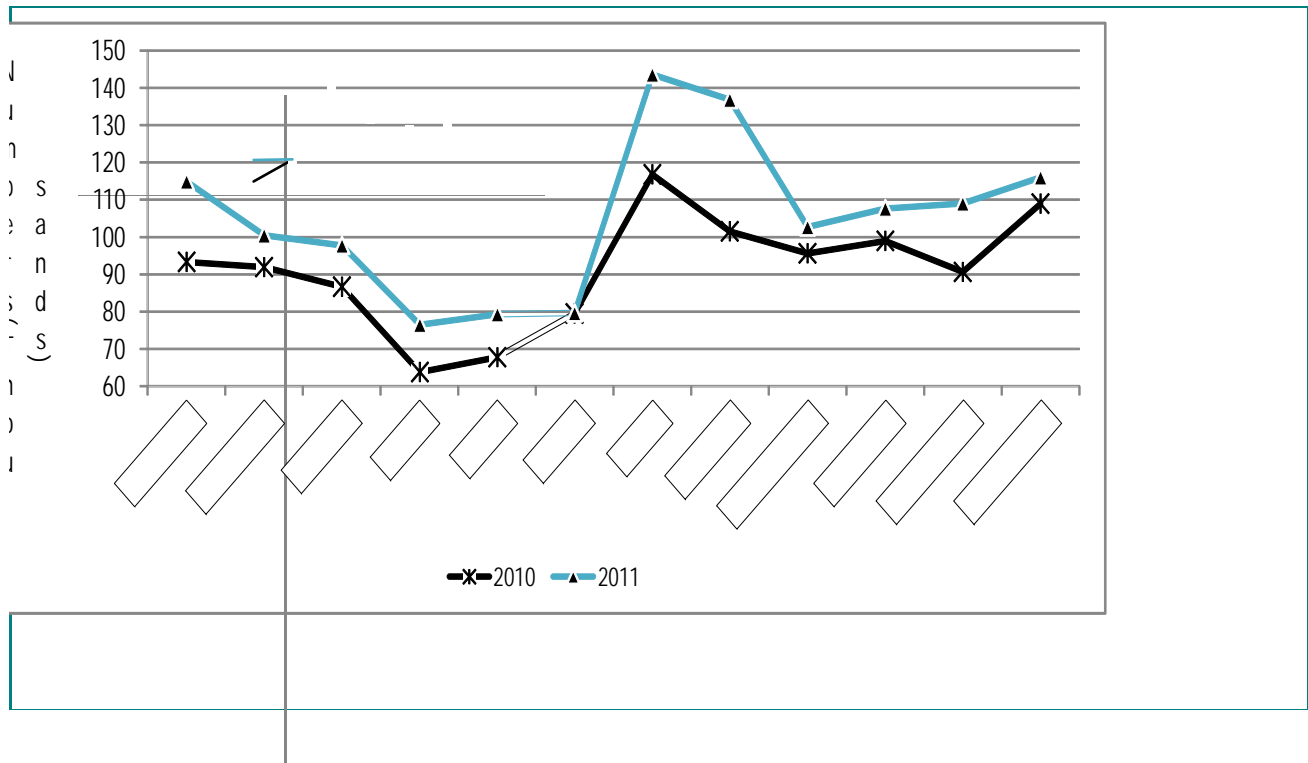


TABLE (19A): JOMO KENYATTA INT. AIRPORT INTERNATIONAL FLIGHTS ONLY- EMBARKED PASSENGERS BY PORT OF DESTINATION.

PORTS.	2009	2010				2011									
	TOTAL	Oct	Nov	Dec	Total	Jan	Feb	Mar	Apr	May	June	July	Aug	Sep	Oct
ADDIS ABABA (ADD)	20,498	1,413	1,370	1,074	14,053	1,088	1,153	1,176	1,292	1,319	1,116	1,013	1,051	1,043	1,649
CAIRO (CAI)	25,625	3,391	3,114	2,993	31,424	2,402	493	1,909	2,483	2,170	1,966	3,174	1,377	3,214	2,657
DAR ES SALAAM (DAR)	89,452	10,759	11,397	13,822	109,218	11,725	11,592	12,527	8,314	8,225	5,833	8,533	8,782	8,792	9,937
ENTEBBE (EBB)	110,048	10,220	10,151	11,334	118,949	11,282	14,730	13,392	10,331	10,944	10,729	11,737	11,044	11,593	12,328
HARARE (HRE)	15,749	2,379	2,423	3,628	28,010	2,429	2,043	2,344	3,848	2,586	2,437	2,846	3,285	3,085	3,368
JOHANNESBURG (JNB)	87,383	8,008	7,243	8,949	108,874	10,608	10,342	11,075	13,336	13,426	12,401	12,806	11,422	14,887	13,563
TOTAL AFRICA	348,755	36,170	35,698	41,800	410,528	39,534	40,353	42,423	39,604	38,670	34,482	40,109	36,961	42,614	43,502
BOMBAY (BOM)	52,322	4,935	5,613	6,464	60,389	5,027	6,620	8,027	7,880	7,982	7,558	7,657	8,208	7,973	8,513
DUBAI (DXB)	156,363	20,022	17,082	17,915	208,365	17,275	14,659	15,276	16,242	15,604	15,980	21,533	24,649	23,271	19,140
JEDAH (JED)	2,517	-	-	-	241	-	-	-	-	880	722	876	940	762	1,502
KARACHI (KHI)	0	-	-	-	0	-	-	-	-	-	0	0	0	0	0
MUSCAT (MCT)	0	457	409	499	2,304	659	362	334	281	223	289	496	395	479	494
OTHERS															
TOTAL ASIA	211,202	25,414	23,104	24,878	271,299	22,961	21,641	23,637	24,403	24,689	24,549	30,562	34,192	32,485	29,649
AMSTERDAM (AMS)	61,699	8,575	7,867	7,755	85,827	9,899	7,067	7,922	13,893	11,781	9,061	14,384	14,553	13,466	12,257
BRUSSELS (BRU)	12,142	968	981	917	8,693	1,031	1,067	1,102	1,831	1,654	1,231	1,985	1,973	1,834	1,896
LONDON (LON)	151,509	22,695	21,296	21,047	199,466	14,679	15,246	16,593	16,563	16,626	14,622	18,836	18,886	19,084	17,753
PARIS-(CDG) & (PAR)	25,685	2,765	2,714	3,809	33,947	4,064	3,125	3,045	2,978	2,373	3,116	5,141	5,401	4,303	3,901
ROME (ROM) <sup>z</sup>	-	-	-	354	354	1,409	1,037	861	653	662	680	1,111	2,023	2,083	698
ZURICH (ZRH)	20,501	1,049	945	899	22,979	2,179	2,999	2,894	3,376	3,394	2,914	5,851	6,044	5,981	3,298
TOTAL EUROPE	271,536	36,052	33,803	34,781	351,266	33,261	30,541	32,417	39,294	36,490	31,624	47,307	48,880	46,751	39,805
TOTAL OTHERS**	459,785	53,938	32,803	46,113	487,485	51,809	55,998	50,697	53,117	58,233	53,132	74,810	74,982	75,394	72,585
GRAND TOTAL	1,291,278	151,574	125,408	147,572	1,520,578	147,565	148,533	149,174	156,418	158,082	143,787	192,788	195,015	197,244	185,541

FIG 16: J.K.I.A. PASSENGERS BY REGION OF DESTINATION

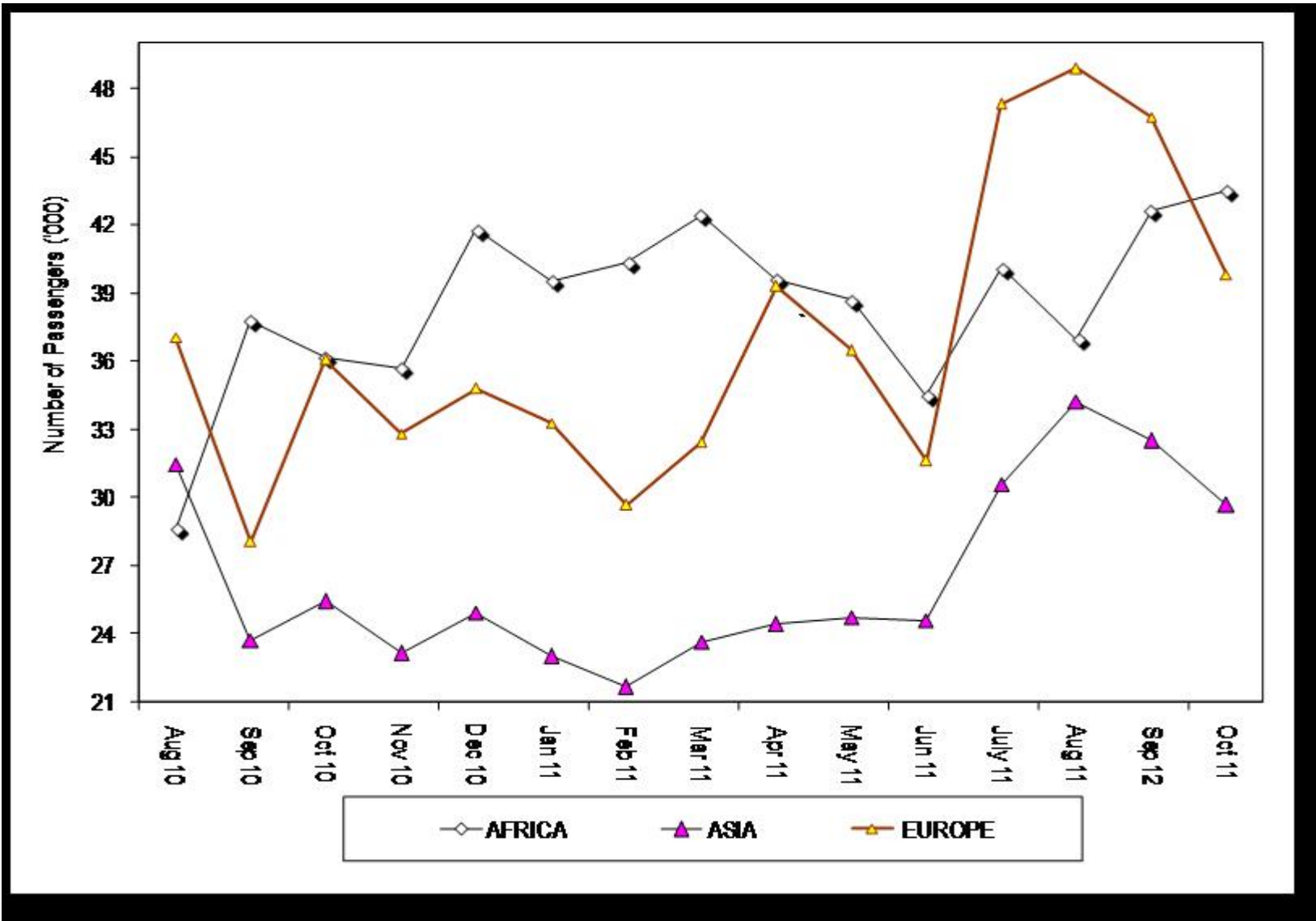
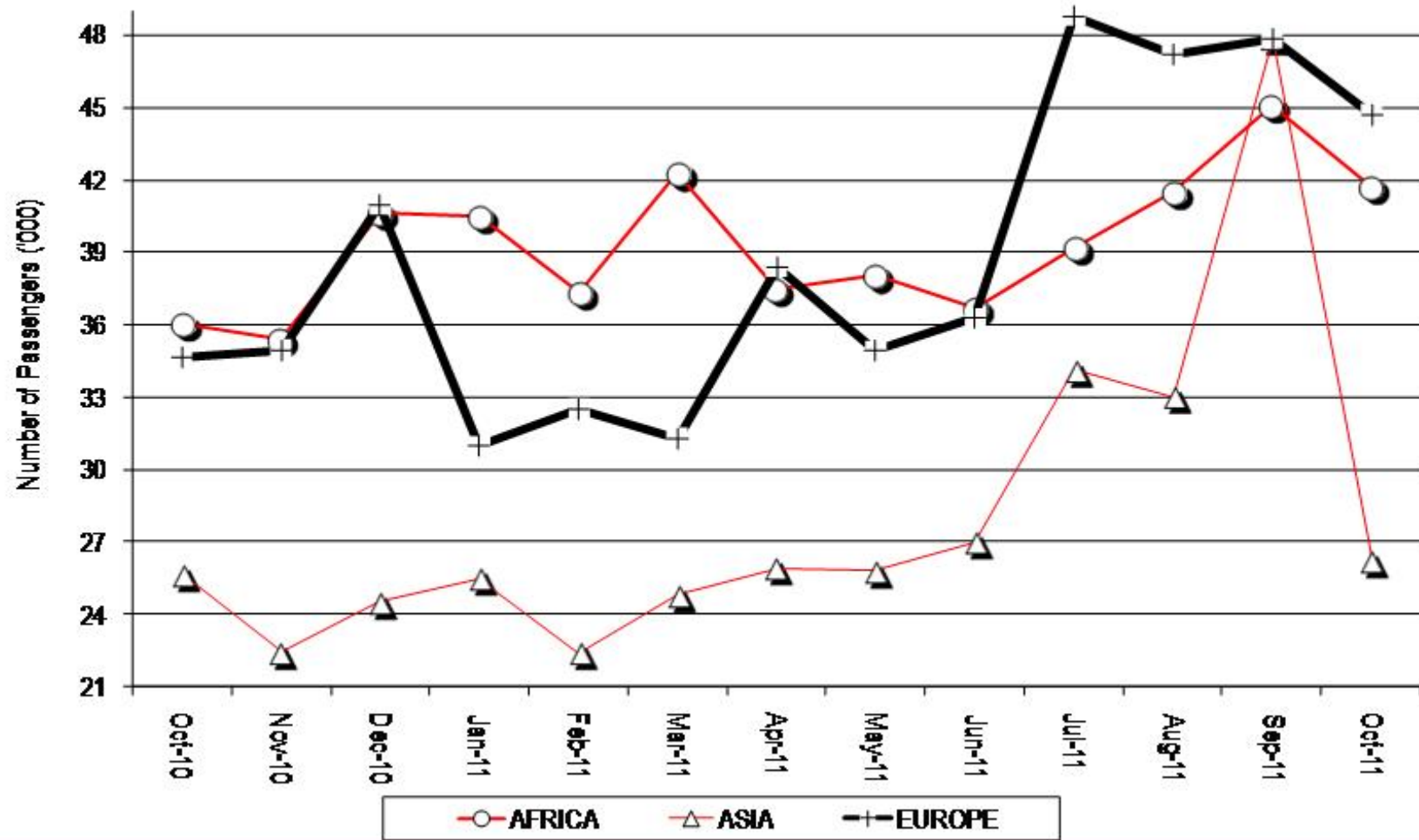


TABLE (19B): JOMO KENYATTA INT. AIRPORT INTERNATIONAL FLIGHTS ONLY- LANDED PASSENGERS BY PORT OF ORIGIN.

PORTS	2009	2010				2011									
	TOTAL	Oct	Nov	Dec	Total	Jan	Feb	Mar	Apr	May	June	July	Aug	Sep	Oct
ADDIS ABABA (ADD)	19,245	1,405	1,483	1,311	15,723	1,183	1,101	1,145	1,545	1,493	1,348	1,324	1,241	1,265	1,832
CAIRO (CAI)	28,936	3,294	2,707	3,117	35,752	3,592	691	2,162	2,198	2,234	2,753	4,859	4,269	3,027	2,714
DAR ES SALAAM (DAR)	98,574	12,037	11,494	13,330	117,074	11,311	11,480	11,373	7,765	7,832	7,067	8,509	10,241	9,599	9,538
ENTEBBE (EBB)	114,174	10,138	9,925	10,917	115,942	10,216	9,921	12,373	9,473	10,062	10,528	11,365	11,293	11,290	12,414
HARARE (HRE)	14,993	1,730	2,094	2,858	17,357	2,966	1,990	2,272	3,221	3,220	2,320	2,336	3,213	3,440	3,109
JOHANNESBURG (JNB)	88,770	7,458	7,625	9,091	101,162	11,237	12,138	12,928	13,292	13,174	12,701	10,816	11,221	16,454	12,123
TOTAL AFRICA	364,692	36,062	35,328	40,624	403,010	40,505	37,321	42,253	37,494	76,030	36,717	39,209	41,478	45,075	41,730
BOMBAY (BOM)	52,999	5,127	5,265	6,167	62,540	7,025	7,809	9,431	9,529	9,064	7,606	8,496	8,478	8,634	8,432
DUBAI (DXB)	166,002	20,246	16,726	17,910	213,507	17,764	14,142	14,958	16,015	15,569	17,755	24,172	23,168	23,086	16,650
JEDAH (JED)	2,544	-	-	-	-	-	-	-	-	660	841	928	857	645	770
KARACHI (KHI)	0	-	-	-	-	-	-	-	-	0	0	0	0	0	0
MUSCAT (MCT)	-	293	463	446	1,635	686	442	426	387	516	788	527	513	475	378
TOTAL ASIA	221,545	25,666	22,454	24,523	277,682	25,475	22,393	24,815	25,931	25,809	26,990	34,123	33,016	47,851	26,239
AMSTERDAM (AMS)	81,511	8,640	9,605	10,015	97,542	10,895	10,797	11,107	14,938	14,245	13,348	15,209	15,324	15,448	12,815
BRUSSELS (BRU)	11,752	914	974	892	8,127	991	1,013	1,098	1,132	1,084	980	1,973	1,984	1,897	2,078
LONDON (LON)	133,056	20,788	21,335	24,309	196,387	14,462	15,914	15,848	17,196	15,043	16,340	20,303	20,510	21,108	21,919
PARIS-(CDG)&( PAR)	23,576	3,269	2,036	3,721	25,933	2,725	2,731	1,759	2,293	1,601	2,783	5,595	3,640	3,584	3,871
ROME (ROM) <sup>z</sup>	-	-	-	1,074	1,074	906	1,037	470	495	636	725	1,912	1,747	1,678	719
ZURICH (ZRH)	11,174	1,014	989	978	14,478	997	1,011	1,024	2,324	2,298	2,089	3,793	4,006	4,136	3,278
TOTAL(EUROPE)	261,069	34,625	34,939	40,989	343,541	30,976	32,503	31,306	38,378	34,907	36,265	48,785	47,211	47,851	44,680
OTHERS(TOTAL) **	487,176	53,124	52,729	46,610	484,608	45,786	50,439	46,355	51,496	55,681	58,132	74,690	74,404	73,895	74,300
GRAND TOTAL	1,334,482	149,477	145,450	152,746	1,508,841	142,742	142,656	144,729	153,299	192,427	158,104	196,807	196,109	199,661	186,949

FIG 17: J.K.I.A. PASSENGERS BY REGION OF ORIGIN



**TABLE 19 C: NEW VEHICLE REGISTRATION**

Body Type/Month	2009	2010				2011								
	Cumulative 2009	Sep	Oct	Nov	Dec	Jan	Feb	Mar	Apr	May	June	Jul	Aug	Sep
Saloons	16,930	1,561	1,435	1,567	1,874	804	384	841	768	1,026	1,339	1,039	1,086	864
St,Wagon	27,599	3,505	3,291	3,850	4,602	1,986	1,047	2,549	2,207	3,024	3,450	3,100	3,288	2,439
Vans,P/Ups,etc	7,120	652	524	724	623	547	484	678	603	650	751	616	759	634
M/Buses	4,483	247	198	286	534	226	44	30	21	14	38	21	19	7
Buses	1,057	105	125	158	164	93	125	140	113	92	144	139	173	100
Lorries	6,037	351	346	587	411	333	302	488	547	505	423	575	439	326
Trailers	2,883	168	224	171	184	151	205	183	156	224	254	248	253	252
Motors Cycles	91,151	9,115	11,123	12,806	8,804	14,156	13,089	11,167	7,657	9,245	14,505	13,079	12,165	11,954
3 Wheelers	863	213	134	217	110	181	168	199	313	151	146	150	127	190
Wheeled tractors	1,115	146	87	134	61	67	117	137	97	108	111	74	83	90
Others	2,575	263	244	96	204	261	235	85	78	78	385	87	405	346
<b>TOTAL</b>	<b>161,813</b>	<b>16,326</b>	<b>17,731</b>	<b>20,596</b>	<b>17,571</b>	<b>18,805</b>	<b>16,200</b>	<b>16,497</b>	<b>12,560</b>	<b>15,117</b>	<b>21,546</b>	<b>19,128</b>	<b>18,797</b>	<b>17,202</b>